

REVIEW

Molecular basis of hereditary cardiomyopathy: abnormalities in calcium sensitivity, stretch response, stress response and beyond

Akinori Kimura

Cardiomyopathy is caused by functional abnormality of cardiac muscle. The functional abnormality involved in its etiology includes both extrinsic and intrinsic factors, and cardiomyopathy caused by the intrinsic factors is called as idiopathic or primary cardiomyopathy. There are several clinical types of primary cardiomyopathy including hypertrophic cardiomyopathy (HCM) and dilated cardiomyopathy (DCM). Linkage studies and candidate gene approaches have explored the disease genes for hereditary primary cardiomyopathy. The most notable finding was that mutations in the same disease gene can be found in different clinical types of cardiomyopathy. Functional analyses of disease-related mutations have revealed that characteristic functional alterations are associated with the clinical types, such that increased and decreased Ca^{2+} sensitivity due to sarcomere mutations are associated with HCM and DCM, respectively. In addition, our recent studies have suggested that mutations in the Z-disc components found in HCM and DCM may result in increased and decreased stiffness of sarcomere; that is, stiff sarcomere and loose sarcomere, respectively, and hence altered stretch response. More recently, mutations in the components of I region were found in hereditary cardiomyopathy and the functional analyses of the mutations suggested that the altered stress response was associated with cardiomyopathy, further complicating the etiology and pathogenesis. However, elucidation of genetic etiology and functional alterations caused by the mutations shed lights on the new therapeutic approaches to hereditary cardiomyopathy, such that treatment of DCM with a Ca^{2+} sensitizer prevented the disease in a mouse model.

Journal of Human Genetics (2010) 55, 81–90; doi:10.1038/jhgc.2009.138; published online 15 January 2010

Keywords: calcium sensitivity; cardiomyopathy; mutation; stress response; stretch response

INTRODUCTION

Cardiomyopathy is a heterogeneous disease caused by functional abnormality of cardiac muscle and classified into primary cardiomyopathy and secondary cardiomyopathy.¹ Secondary cardiomyopathy is defined as cardiomyopathy caused by extrinsic factors including ischemia, hypertension and metabolic disorders. On the other hand, diagnosis of primary cardiomyopathy is based on the exclusion of secondary cardiomyopathy and there are several different clinical types.^{2,3} Hypertrophic cardiomyopathy (HCM) and dilated cardiomyopathy (DCM) are two major clinical types of primary cardiomyopathy that had been defined as ‘idiopathic’; that is, of unknown etiology. HCM, a major cause of sudden death in young and heart failure, is characterized by left ventricular hypertrophy, often asymmetric, accompanied by myofibrillar disarrangements and reduced compliance (diastolic dysfunction) of cardiac ventricles. In contrast, DCM is characterized by dilated ventricular cavity with systolic dysfunction. Clinical symptom of DCM is heart failure and often associated with sudden death. There are other clinical types of cardiomyopathy.

Restrictive cardiomyopathy (RCM) is accompanied by increased stiffness of the myocardium with diastolic dysfunction without significant hypertrophy.⁴ In addition, arrhythmogenic right ventricular cardiomyopathy (ARVC) is characterized by a dilated dysfunctional right ventricle (RV), ventricular arrhythmias and fibrofatty replacement of the RV. Another cardiomyopathy is left ventricular noncompaction (LVNC) characterized by less trabeculations in the left ventricle (LV), as well as LV hypertrophy and/or dilation.¹

The etiology of primary cardiomyopathy had been unknown, but various genetic abnormalities associated with the cardiomyopathy have been unraveled in the past two decades. More than half of HCM patients have family history of the disease consistent with autosomal dominant genetic trait.⁵ In the case of DCM, about 20–35% patients had family history of the disease, mainly consistent with the autosomal dominant inheritance, although some familial cases can be explained by autosomal recessive or X-linked recessive trait.^{6,7} Familial occurrence is also noted in RCM, ARVC and LVNC.^{1–4} As the presence of family history suggested the genetic etiology of the

disease, linkage studies in multiplex families were taken to identify the disease loci in each family. Identification of the disease loci has enabled one to decipher the disease-linked mutations in the genes located within the loci. Subsequently, other candidate gene analyses, focused on the genes encoding for proteins related or interacting with products of the disease genes, have been successful in unraveling novel disease genes. As shown in Table 1 many different disease genes were identified. The most important point is the overlapping of disease genes for different clinical types.

SARCOMERE MUTATIONS IN HCM

Identification of a missense mutation in cardiac β -myosin heavy chain gene (*MYH7*) linked to HCM in a large multiplex family was the first demonstration of the disease gene for HCM.⁸ Subsequently, many investigators have analyzed *MYH7* for mutations in HCM patients and many different missense mutations were identified as the cause. However, frequency of *MYH7* mutations in the patients was less than half and there were many families not linked to the *MYH7* locus. Linkage studies in such non-*MYH7*-linked HCM families have revealed mutations in α -tropomyosin gene (*TPM1*), cardiac troponin T gene (*TNNT2*) and cardiac myosin binding protein-C gene (*MYBPC3*) as the causes of HCM. As these genes encode for components of sarcomere involved in muscle contraction, genes for other sarcomere components were analyzed and lead to the identification of HCM-associated mutations in ventricular myosin essential light chain gene (*MYL3*), ventricular myosin regulatory light chain gene (*MYL2*), cardiac troponin I gene (*TNNI3*), cardiac α -actin (*CACT*) and cardiac troponin C (*TNNC1*). Therefore, mutations in any components of sarcomere can result in HCM.^{3,5}

Our study has showed that sarcomere mutations are found in about 40% of East Asian (Japanese and Korean) patients with familial HCM in the heterozygous state, consistent with the autosomal dominant inheritance (Table 2). About 20, 10 and 10% of patients carried mutations in *MYH7*, *TNNT2* and *MYBPC3*, respectively, whereas a few cases had mutations in other components of sarcomere such as *MYL2*, *MYL3* and *TNNI3*. So far investigated, we found no patient who had mutations in two or more disease genes, although there were some patients who were homozygous for the sarcomere mutation. The homozygous patients showed severer clinical manifestations than the heterozygous patients in the family, demonstrating the gene dose of mutation.⁹ Disease-related mutations can also be found in sporadic HCM (Table 2). We found one *de novo* case,¹⁰ but the other sporadic cases were probably due to the low penetrance of the mutation, because most of the mutations found in the sporadic HCM patients can also be found in other patients with familial HCM.

The most striking impact of unraveling disease genes and disease-causing mutations is not only that the etiology and pathogenesis of cardiomyopathy are understood but also that the genetic testing will be at least in part available for the cardiomyopathy. The genetic testing is useful for the provision of prognosis and more specifically predicting risk for unfavorable outcome such as sudden cardiac death or heart failure. From the beginning of unraveling disease-causing mutations, genotype–phenotype correlation analyses was one of the main focus and such analyses were mainly reported for HCM. Clinical manifestations of HCM due to the sarcomere mutations were in general different from each other, but there were some tendencies of genotype–phenotype correlations.^{11,12} For example, Watkins *et al.*¹³ hypothesized that the *MYH7* mutations leading to amino acid changes with charge alteration was associated with poor survival prognosis. However, it is not simply applicable to all the *MYH7* mutations. As shown in Figure 1, three different *MYH7* mutations, Arg249Gln,

Table 1 Disease genes for hereditary cardiomyopathy

Clinica phenotype	Gene	
	Heredity symbol	Coding protein
HCM/DCM/RCM/LVNC AD	<i>MYH7</i>	Cardiac β -myosin heavy chain
HCM/DCM/RCM/LVNC AD	<i>TNNT2</i>	Cardiac troponin T
HCM/DCM AD	<i>TPM1</i>	α -tropomyosin
HCM/DCM AD	<i>MYBPC3</i>	Cardiac myosin binding protein-C
HCM AD	<i>MYL3</i>	Ventricular myosin essential light chain
HCM AD	<i>MYL2</i>	Ventricular myosin regulatory light chain
HCM/DCM/RCM AD	<i>TNNI3</i>	Cardiac troponin I
HCM/DCM/LVNC AD	<i>ACTC</i>	Cardiac α -actin
HCM/DCM AD	<i>TTN</i>	Titin, connectin
HCM/DCM AD	<i>TNNC1</i>	Cardiac troponin C
HCM AD	<i>MYH6</i>	Cardiac α -myosin heavy chain
HCM/DCM AD	<i>CSRFP3</i>	Muscle LIM protein, MLP
HCM AD	<i>CAV3</i>	Caveolin-3
HCM/DCM AD	<i>TCAP</i>	Titin-cap, Tcap, telethonin
HCM/DCM AD	<i>VCL</i>	Metavinculin
HCM AD	<i>JPH-2</i>	Junctophilin-2
HCM AD	<i>OBSCN</i>	Obscurin
HCM AD	<i>MYOZ2</i>	Myozenin, calstactin-1
HCM/DCM AD	<i>ANKRD1</i>	CARP
DCM/RCM AD	<i>DES</i>	Desmin
DCM/LVNC AD	<i>LMNA</i>	Lamin A/C
DCM AD	<i>SAGD</i>	δ -sarcoglycan
DCM AD	<i>ACTN2</i>	α -actinin-2
DCM/LVNC AD	<i>LDB3</i>	Cypher, ZASP, oracle
DCM/HCM AD	<i>PLB</i>	Phospholamban
DCM AD	<i>ABCC9</i>	K _{ATP} channel
DCM AD	<i>SCN5A</i>	Cardiac Na channel
DCM/HCM AD	<i>CRYAB</i>	α B crystallin
DCM AD	<i>PSEN1</i>	Presenilin-1
DCM AD	<i>PSEN2</i>	Presenilin-2
DCM AD	<i>FHL2</i>	Four and half LIM protein-2, FHL2
DCM AD	<i>LMNA4</i>	Laminin α 4
DCM AD	<i>ILK</i>	Integrin-linked kinase
DCM AD	<i>MYPN</i>	Myopalladin
DCM AD	<i>CHRM2</i>	Acetylcholine receptor
DCM XR	<i>DMD</i>	Dystrophin
DCM XR	<i>EMD</i>	Emerin
LVNC/DCM XR	<i>TAZ</i>	Tafazzin, G4.5
DCM XR	<i>FKTN</i>	Fukutin
ARVC/DCM AR	<i>DSP</i>	Desmoplakin
ARVC/DCM AR, AD	<i>JUP</i>	Plakoglobin
ARVC AD	<i>PKP2</i>	Plakophilin-2
ARVC AD	<i>TGFB3</i>	TGF β 3
ARVC AD	<i>RYR2</i>	Ryanodine receptor 2
ARVC AD	<i>DSG3</i>	Desmoglein 3
LVNC AD	<i>DTNA</i>	α -dystrobrebin

Abbreviations: AD, autosomal dominant; AR, autosomal recessive; DCM, dilated cardiomyopathy; HCM, hypertrophic cardiomyopathy; LVNC, left ventricular noncompaction; RCM, restrictive cardiomyopathy; XR, X-linked recessive.

Gly716Arg and Asp778Gly, with poor survival prognosis^{14,15} were all categorized into charge altered mutation. On the other hand, there were three other different *MYH7* mutations, Arg143Gln, Arg870His and Arg870Cys, with relatively benign survival prognosis^{16,17} and two of them, Arg143Gln and Arg870Cys, were also associated with charge alteration. As Arg249Gln, Gly716Arg and Asp778Gly were mapped within the functionally important domain of myosin heavy chain,

Table 2 Frequencies of disease-associated mutations in Japanese and Korean patients with HCM

Gene symbol	Familial case (%) (n=162)	Sporadic case (%) (n=100)
<i>MYH7</i>	19.1	2.0
<i>TNNT2</i>	11.7	3.0
<i>TPM1</i>	0.6	0.0
<i>MYBPC3</i>	11.1	5.0
<i>MYL3</i>	0.6	1.0
<i>MYL2</i>	1.2	0.0
<i>TNNI3</i>	2.5	3.0
<i>ACTC</i>	0.0	0.0
<i>TTN^a</i>	>2.5	>2.0
<i>CSRP3</i>	0.0	0.0
<i>TNNC1</i>	0.0	0.0
<i>CAV3</i>	0.6	0.0
<i>MYH6</i>	nt	nt
<i>TCAP</i>	1.2	0.0
<i>CRYAB</i>	0.0	0.0
<i>VCL</i>	0.0	0.0
<i>JPH-2</i>	nt	nt
<i>MYPN</i>	0.0	nt
<i>OBSCN</i>	0.6	0.0
<i>ANKRD1</i>	0.6	0.0
Sum	> 54.8	> 15.0

Abbreviations: DCM, dilated cardiomyopathy; HCM, hypertrophic cardiomyopathy; nt, not tested.
^aZ-disc, N2-B, N2-A, Novex3 and is2 domains (about 20% of entire *TTN*) were analyzed.

Table 3 Phenotype of HCM patients carrying mutations in *MYH7*, *TNNT2* and *MYBPC3*

	<i>MYH7</i> mutation	<i>TNNT2</i> mutation	<i>MYBPC3</i> mutation
Number of patients	41	30	41
Number of mutations	16	5	9
IVS (mm)	19.3±7.6	15.9±5.0	18.0±5.7
PW (mm)	11.1±2.6	10.3±5.0	11.0±3.0
LVDD (mm)	44.0±8.4	49.7±9.9	44.2±8.2
LAD (mm)	40.8±9.4	40.6±10.3	38.7±7.9
FS (%)	37.7±11.1	30.3±9.1	35.7±11.1
EF (%)	73.5±14.0	64.3±14.9	71.2±14.2
Age at diagnosis (years)	36.5±18.7	41.2±17.6	39.7±15.8
Duration of follow-up (years)	10.0±8.0	11.2±5.7	7.7±6.2
<i>Prognosis of patients (%)</i>			
Improved	0.0	3.3	0.0
No change	59.5	25.0	64.1
Worse	24.3	42.9	28.2
Death	16.2	28.6	7.7
Worse+death	40.5	71.4	35.9
<i>Rate of death (% per year)</i>			
	1.5	2.5	1.1

Abbreviations: EF, ejection fraction; FS, fractional shortening; IVS, thickness of intraventricular septum; LAD, left atrial dimension; LVDD, diastolic left ventricular dimension; PW, thickness of posterior ventricular free wall.

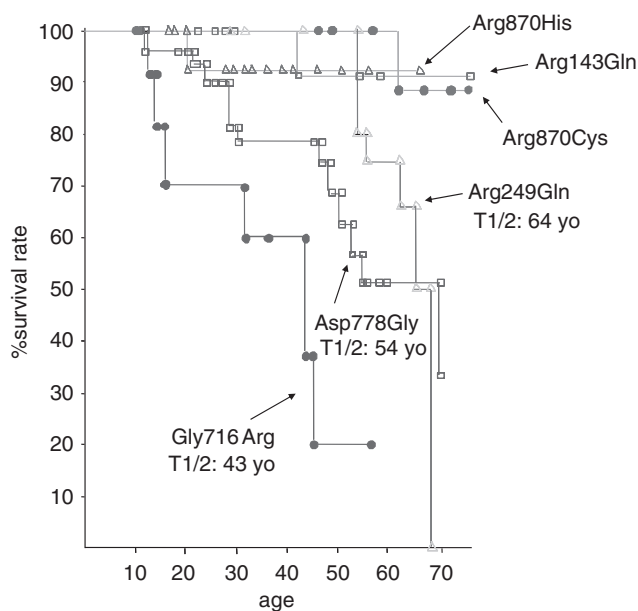


Figure 1 Survival prognosis of HCM patients with different *MYH7* mutations. Cumulative survival of HCM patients with *MYH7* mutations are demonstrated. Arg249Gln, Gly716Arg and Asp778Gly were associated with relatively poor prognosis, whereas Arg143Gln, Arg870His and Arg870Cys showed relatively benign prognosis.

ATP-binding domain, converter domain and myosin light chain-interacting domain,¹⁸ respectively, while the benign mutations Arg143Gln and Arg870Cys were not mapped within these important domains. As the mutations reported by Watkins *et al.*¹³ were all

mapped within the ATP-binding domain, actin-interacting domain, converter domain or myosin light chain-interacting domains,¹⁸ it was speculated that the mutations with charge alteration and mapped within the functionally important domains were correlated with poor survival prognosis.

In addition, there were several interesting characteristics of mutation-prone HCM patients in East Asians (Japanese and Korean), such that cardiac hypertrophy was more prominent in *MYH7* and *MYBPC3* cases than *TNNT2* cases (Table 3). It may be worth noting that the age at diagnosis was relatively late and cardiac function at the diagnosis was relatively lowered in *TNNT2* cases than the others.¹⁰ This was in good agreement with that *TNNT2* mutations are generally associated with poor prognosis and sudden cardiac death in European populations.^{19,20} Although *MYBPC3* cases were initially reported to follow relatively benign clinical course in an European population,²¹ our data showed that 36% of *MYBPC3* cases in East Asians followed worse prognosis during the follow-up period (Table 3). In general, cardiac hypertrophy developed at the diagnosis gradually reduced during the follow-up period, and cardiac function becomes decreased later in the life even in the *MYBPC3* cases.²²

Initial analysis of functional changes caused by the *MYH7* mutations demonstrated decreased power generation by the mutant myosin heavy chains²³ and the identification of HCM-related mutations in sarcomere components, troponin T and α -tropomyosin, had led to a hypothesis that HCM is the disease of sarcomere and the cardiac hypertrophy was a compensation of decreased power generation.²⁴ However, we found HCM-associated *TNNI3* mutations at the contraction inhibitory domain,¹⁰ which implied that the decreased power was not a common functional change caused by the sarcomere mutations. Indeed, subsequent functional analyses of mutations in genes for other sarcomere components than *MTH7* have revealed that contractile performance was not decreased by the mutations and most HCM-associated sarcomere mutations resulted in increased Ca^{2+} sensitivity of muscle contraction.^{25–30} As an *MYH7* mutation that

caused HCM in transgenic mice also increased Ca^{2+} sensitivity at the muscle fiber level,³¹ a common functional alteration caused by HCM-related sarcomere mutations may be the increased Ca^{2+} sensitivity. Muscle contraction is regulated by the concentration of intracellular Ca^{2+} that is released from sarcoplasmic reticulum (SR) via ryanodine receptor (RyR2) and re-up taken to SR via SR Ca^{2+} -ATPase (SERCA). When the concentration of Ca^{2+} is increased or decreased, muscle is contracted or relaxed, respectively. Increased Ca^{2+} sensitivity is a leftward shift of Ca^{2+} -tension curve; more tension is generated by mutant sarcomere than normal sarcomere at the same Ca^{2+} concentration (hypercontraction) or muscle with mutant sarcomere is under less relax states (diastolic dysfunction) than normal sarcomere. This is consistent with the finding that characteristic features of HCM are hypercontraction and diastolic dysfunction.

Z-DISC MUTATIONS IN HCM

As mutations in the sarcomere components were found in only less than half of familial HCM patients, there should be other disease gene(s) for HCM, and candidate gene approaches were taken to identify the disease-related mutations in other genes expressed in cardiac muscle (Figure 2). Identification of an HCM-associated mutation in titin gene (*TTN*) was the first example of disease gene other than the sarcomere components,³² and the functional alteration due to the *TTN* mutation was an increased binding to α -actinin (Figure 3). In addition, we demonstrated that the HCM-associated *Tcap* gene (*TCAP*) mutations increased the binding of *Tcap* to titin, MLP and calsarcin-1,³³ leading to a hypothesis that Z-disc mutations in HCM may result in increased binding of Z-disc components and hence 'stiff sarcomere' (Figure 3). 'Stiff sarcomere' would increase passive tension on stretch of sarcomere. As the increased passive tension was associated with increased Ca^{2+} sensitivity,³⁴⁻³⁶ we have speculated that HCM-associated abnormality in both Z-disc components and sarcomere components cause the increased Ca^{2+} sensitivity. It should be noted that a possible controversy exists; that is, HCM-associated MLP gene (*CSRP3*) mutations were reported to decrease

the binding to α -actinin and N-RAP.^{37,38} However, as discussed in the later section, DCM-associated mutations were found in *CSRP3* and α -actinin gene (*ACTN2*), and these mutations decreased binding to each other.³⁹ Therefore, the decreased binding between MLP and α -actinin was associated with both HCM and DCM. This discrepancy should be resolved by further studies.

OTHER MUTATIONS IN HCM

There are several other disease genes for HCM, including mutations in caveolin-3 gene (*CAV3*),⁴⁰ meta-vinculin gene (*VCL*),⁴¹ α B-crystallin gene (*CRYAB*),⁴² junctophilin-2 gene (*JPH-2*),⁴³ obscurin gene (*OBSCN*)⁴⁴ and most recently reported CARP gene (*ANKRD1*)⁴⁵ (Figure 2). Functional analyses were reported for *CRYAB*, *CAV3*, *OBSCN* and *ANKRD1* mutations; aggregation of α B-crystallin in cytoplasm,⁴² decreased cell surface expression of caveolin-3,⁴⁰ decreased binding to titin,⁴⁴ and increased binding to titin and myopalladin,⁴⁵ respectively. It is not clear how the aggregated α B-crystallin resulted in cardiac hypertrophy, but impaired stress response may exaggerate hypertrophic response.⁴⁶ It should be noted here that an HCM-associated *TTN* mutation in N2B region increased binding to FHL2 protein⁴⁷ and decreased binding to α B-crystallin.⁴⁸ As for the function of caveolin-3 in cardiac function, it was reported that cell surface expression of caveolin-3 was associated with cardiac hypertrophy.⁴⁹ It was also reported that overexpression of caveolin-3 inhibit the hypertrophic response,⁵⁰ suggesting that reduced caveolin-3-mediated signaling would result in cardiac hypertrophy. Function of obscurin is not fully understood, but obscurin may be involved in calmodulin/CaMK-mediated signaling because obscurin was reported to bind and tether calmodulin to titin,⁵¹ of which process was impaired by the HCM-associated *OBSCN* mutation. The functional significance of increased binding of CARP to titin and myopalladin caused by the *ANKRD1* mutations is not clarified, but mutant CARP showed nuclear or peri-nuclear localization, whereas normal CARP was exclusively localized in the cytoplasm.⁵² As CARP is a hypertrophy-related transcriptional co-factor⁵² and is known to be localized

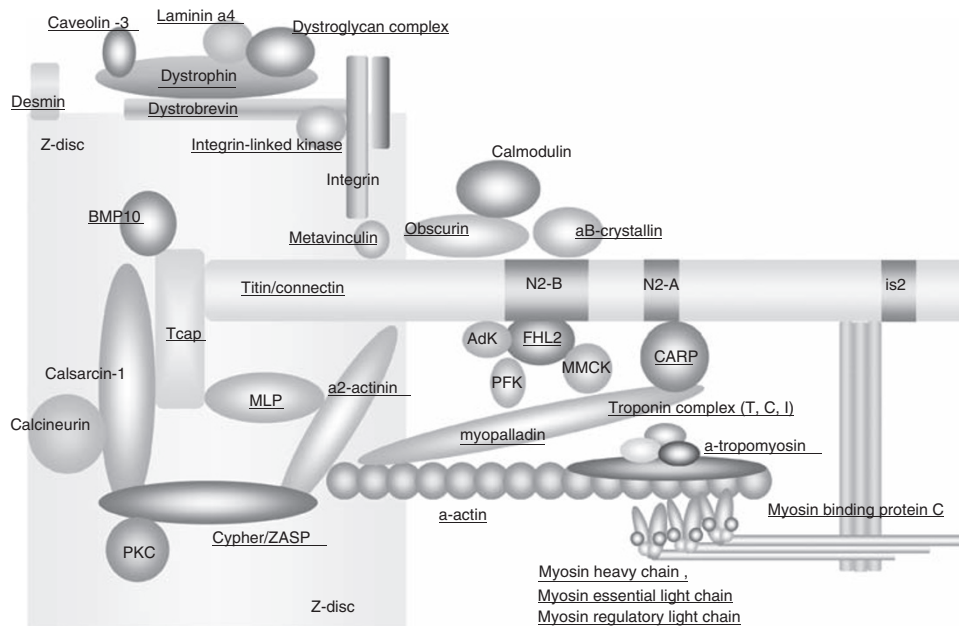


Figure 2 Schematic representation of sarcomere components. Half sarcomere is schematically shown. Components in which cardiomyopathy-associated mutations are found are underlined.

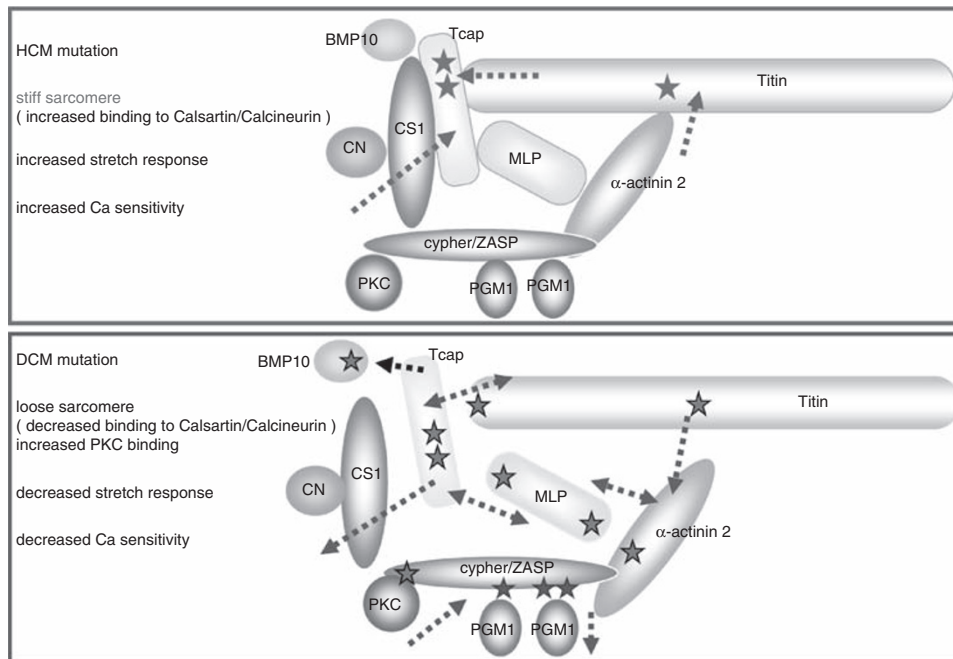


Figure 3 Schematic representation of functional alterations caused by Z-disc mutations. Functional alterations found with HCM-associated mutations (red stars) are shown in the upper panel, whereas the lower panel indicated the functional changes caused by DCM-associated mutations (blue stars). Broken arrows show the altered interactions caused by the mutations. CN, calcineurin; CS1, calsarcin-1. A full color version of this figure is available at *the Journal of Human Genetics* journal online.

in the cytoplasm and shifted to nucleus when cardiomyocytes were stretched,⁵³ presence of mutant CARP to nucleus suggested that the mutation rendered the cardiomyocytes hypersensitive to the stretch response leading to hypertrophy.

MEMBRANOUS AND CYTOSKELETAL MUTATIONS IN DCM

The first discovery of disease gene for DCM is a mutation in dystrophin gene (*DMD*) found in male siblings of X-linked DCM.⁵⁴ X-linked DCM is a rare form of familial DCM almost exclusively affecting males.⁵⁵ *DMD* mutations are known to cause Duchenne type and Becker type muscular dystrophy. In general, muscular dystrophy mainly affects skeletal muscles, and cardiac involvement is observed usually later in the clinical course.^{56,57} However, X-linked DCM cases usually manifest with cardiac symptoms and subtle skeletal muscle involvement,⁵⁵ and phenotypic variance of *DMD* mutation may be caused by which domain of dystrophin was affected.⁵⁶ As shown in Table 4, our study showed that *DMD* mutations could be found in 5% of sporadic cases. None of these patients showed skeletal muscle symptoms, demonstrating that X-linked DCM should be considered not only for male sibling of familial DCM but also for male cases of sporadic DCM.

Dystrophin is a membranous protein having an important function in mechanical links from extracellular matrix to intracellular cytoskeleton in association with other proteins forming dystroglycan complex (DGC).⁵⁸ As muscle contraction forces myocytes with deformity and shortening/stretching, myofilaments should be tightly anchored to membrane and extracellular matrix via DGC to properly transmit the force with avoiding damages of cell membrane. Components of DGC in skeletal and cardiac muscles include dystrophin, dystroglycans (α and β), laminin α , sarcoglycans (α , β , γ and δ), dystrobrebins (α and β), syntrophin and caveolin-3. In addition to DGC, integrins (α and β) are concentrated at the costemeres that overly Z-lines in striated muscles, and the integrin complex also has a function in mechanical

Table 4 Frequencies of disease-associated mutations in Japanese and Korean adult patients with DCM

Gene symbol	Familial case (%) (n=48)	Sporadic case (%) (n=100)
<i>ACTC</i>	0.0	0.0
<i>DES</i>	2.1	0.0
<i>DMD</i>	0.0	5.0
<i>LMNA</i>	0.0	nt
<i>SAGD</i>	0.0	nt
<i>MYH7</i>	0.0	0.0
<i>TNNT2</i>	0.0	0.0
<i>TPM1</i>	0.0	0.0
<i>TTN^a</i>	>6.3	>2.0
<i>CSRP3</i>	0.0	0.0
<i>VCL</i>	0.0	0.0
<i>CRYAB</i>	2.1	0.0
<i>MYBPC3</i>	0.0	0.0
<i>TCAP</i>	2.1	0.0
<i>ACTN2</i>	0.0	0.0
<i>LDB3</i>	2.1	0.0
<i>FKTN</i>	0.0	0.0
<i>FHL2</i>	2.1	0.0
<i>PDLIM3</i>	nt	nt
<i>MYPN</i>	0.0	0.0
<i>LMNA4</i>	0.0	0.0
<i>ILK</i>	0.0	0.0
<i>ANKRD1</i>	0.0	0.0
Sum	>16.7	>7.0

Abbreviations: DCM, dilated cardiomyopathy; nt, not tested.

^aZ-disc, N2-B, N2-A, Novex3 and is2 domains (about 20% of entire *TTN*) were analyzed.

links of power transmission.⁵⁸ Therefore, abnormalities in DGC and integrin complex may result in muscular dystrophy and cardiomyopathy. Indeed, mutations in δ -sarcoglycan gene (*SAGD*),⁵⁹

laminin $\alpha 4$ gene (*LMNA4*),⁶⁰ and integrin-linked kinase gene (*ILK*)⁶⁰ were found to cause DCM of autosomal dominant inheritance (Table 1). It was proposed that DCM was the disease of cytoskeleton or its interacting proteins.⁶¹ However, recent studies showed that etiology of DCM is not confined to the abnormality of the cytoskeleton-related proteins.

SARCOMERE MUTATIONS IN DCM

Identification of cardiac α -actin gene (*CACT*) mutations was the first discovery of genetic cause of autosomal dominant DCM.⁶² In addition, *CACT* mutation was also found in HCM,⁶³ demonstrating that sarcomere mutations cause both HCM and DCM; that is, overlapping disease genes for different cardiomyopathy. Molecular basis of different phenotypes caused by *CACT* mutations was suggested that DCM-associated mutations were found at the α -actinin-interacting domain,⁶² whereas HCM-associated mutations were at the interacting domain to myosin heavy chain.⁶³ On the other hand, recent data suggested that there is a difference in folding property between the DCM-associated mutant actin and HCM-associated mutant actin.⁶⁴ Another example of overlapping disease gene was the identification of *TNNT2* mutation in DCM.⁶⁵ Functional study of *TNNT2* mutations clearly demonstrated the difference between DCM-associated mutation and HCM-associated mutation; that is, DCM-associated *TNNT2* mutation decreased Ca^{2+} sensitivity of muscle contraction, which is in clear contrast to the increased sensitivity caused by the HCM-associated mutation.⁶⁶ Therefore, sarcomere mutations can be found in both HCM and DCM, but difference in the functional alterations may determine the different phenotypes.⁶⁷

Z-DISC MUTATIONS IN DCM

Mutations of membranous, cytoskeletal or sarcomere components were not found in our panel of familial DCM, whereas mutations in Z-disc components were relatively frequent (Table 4). We have reported several DCM-associated Z-disc protein gene mutations in *TTN*,⁶⁸ *CSR3*,⁶⁹ *TCAP*^{33,69} and Cypher/ZASP gene (*LDB3*),⁷⁰ albeit that *CSR3* mutation was not found in Japanese or Korean patients.⁶⁹ As described in the HCM section, the DCM-associated *TCAP* mutations showed opposite functional alterations to the HCM-associated mutations.³³ Similarly, a DCM-associated *TTN* mutation found in the actinin-binding domain showed decreased binding to actinin.⁶⁸ In addition, another DCM-associated *TTN* mutation found in the Tcap-binding domain decreased the binding to Tcap.⁶⁸ As the Z-disc element mutations result in decreased binding among the elements, we hypothesize that DCM is the disease of 'loose sarcomere'^{12,33} (Figure 3). The loose sarcomere is evident in an animal model of DCM, *CSR3* (*MLP*) knock-out mouse, in which Z-disc was wide and stretch response was impaired.⁶⁹ As the stretch response is a hypertrophic response of cardiomyocytes against passive tension and Z-disc elements is suggested to be a stretch sensor of cardiomyocytes, abnormality in Z-disc elements may alter the regulation of stretch response.

Cypher/ZASP is a Z-disc element connecting calsarcin and actinin.⁷⁰ It is interesting to note that calsarcin binds calcineurin,⁷¹ a Ser/Thr phosphatase involved in the process of hypertrophic program of cardiomyocytes.^{72,73} Functional significance of calcineurin anchorage to Z-disc is not fully understood, but it was involved in stress-induced calcineurin-NFAT activation, because heterozygous *MLP* knock-out mice showed reduction in NFAT activation along with dislocation of calcineurin from Z-disc.⁷⁴ On the other hand, Cypher/ZASP binds protein kinase C (PKC)⁷⁰ and a DCM-associated *LDB3* mutation in the PKC-binding domain was found to increase the binding,⁷⁵ it was

suggested that phosphorylation/dephosphorylation of Z-disc elements might be involved in the stretch response. Identification of target protein(s) for phosphorylation (by PKC)/dephosphorylation (by calcineurin) will unravel the molecular mechanism(s) of stretch response and/or signaling molecule(s) of cardiac hypertrophy.

Several other *LDB3* mutations not in the PKC-interacting domain were reported in DCM or LVNC.⁷⁶ As the functional changes caused by these mutations had not been demonstrated, we have searched for binding protein to Cypher/ZASP by using yeast two-hybrid method, and found that phosphoglucomutase-1 (PGM1) as a novel-binding protein.⁷⁷ PGM1 is an enzyme involved in the conversion between glucose-6-phosphate and glucose-1-phosphate, which is involved in the glucose/glycogen metabolism. Functional significance of the binding between PGM1 and the Z-disc element Cypher/ZASP was not known, but the DCM-associated mutations reported by Vatta *et al.*⁷⁶ showed decreased binding to PGM1.⁷⁷ In addition, PGM1 was demonstrated to be localized at the Z-disc under the stressed culture conditions, low serum and low glucose, suggesting the role of PGM1 in the energy metabolism at the Z-disc.⁷⁷ These observations suggested that the decreased stress response might be involved in the pathogenesis of DCM.

There are other DCM-associated mutations found in genes for other Z-line associated proteins, desmin (*DES*)⁷⁸ and metavinculin (*VCL*).⁷⁹ The *VCL* mutation was showed to impair the binding to actin,⁷⁹ whereas the *DES* mutations resulted in subtle change in the cytoplasmic *DES* network.⁸⁰ In addition, mutations in myopalladin gene (*MYPN*) have recently been reported in DCM. Although the molecular mechanisms of *MYPN* mutations leading to DCM remained unclear, the DCM-associated mutations impaired the myofibrinogenesis.⁸¹

OTHER MUTATIONS IN DCM

Etiology of familial DCM is quite heterogeneous, and there are several other disease genes for DCM categorized into several groups. The first group includes mutations in genes for nuclear membrane proteins, lamin A/C (*LMNA*)^{82,83} and emerin (*EMD*),⁸⁴ which cause autosomal dominant and X-linked Emery-Dreifuss muscular dystrophy (EDMD), respectively. EDMD manifests with muscular dystrophy and DCM associated with conduction block.⁸⁵ Molecular mechanisms underlying the development of DCM caused by the nuclear membrane abnormality remain not fully understood,⁸⁶ but a study of an *LMNA* mutation knock-in mouse⁸⁷ showed that the mutation activated the MAPK pathway, suggesting an impaired signal transduction was involved in the pathogenesis of DCM.⁸⁸

The second group consists of mutations affecting ion channel function; regulatory subunit of ATP-sensitive potassium channel (*ABCC9*)⁸⁹ and cardiac sodium channel (*SCN5A*).⁹⁰ Clinical phenotypes of *ABCC9* and *SCN5A* mutations were DCM accompanied by ventricular tachycardia⁸⁹ and conduction defects,⁹⁰ respectively. It should be noted here that the channelopathy is etiologically overlapping with the cardiomyopathy, such as *SCN5A* mutations in DCM and long QT syndrome, *CAV3* mutations in HCM and long QT syndrome, and *RYR2* mutations in ARVC and catecholaminergic polymorphic ventricular tachycardia.⁹¹

The third group is composed of mutations in genes for titin-N2B-interacting proteins, four and half LIM protein (*FHL2*)⁹² and α B-crystallin (*CRYAB*).⁴⁸ As a titin-N2B region mutation found in DCM reduced binding to FHL2⁴⁷ and an *FHL2* mutation reduced binding to titin-N2B,⁹² impaired interaction between titin and FHL2 appeared as a result in DCM. Molecular mechanisms underlying this phenomenon may be that FHL2 function as a tethering molecule of adenylyl kinase,

phosphofructokinase and muscle creatine kinase; that is, proper recruitment of metabolic enzymes was impaired, although abnormality in other functions of FHL2⁹³ could not be neglected. The DCM-associated *CRYAB* mutation decreased binding to titin-N2B region and a DCM-associated titin-N2B region mutation decreased binding to α B-crystallin,⁴⁸ suggesting that impaired interaction between titin-N2B and α B-crystallin resulted in DCM. However, an HCM-associated titin-N2B mutation also reduced the binding to α B-crystallin,⁴⁷ and it is not clear why the impaired binding of titin-N2B and α B-crystallin could express as both HCM and DCM. There may be additional factors involved in the phenotypic expression of titin-N2B mutations, such that binding to FHL2 was different between the HCM- and DCM-associated mutations and that the DCM-associated titin-N2B mutation was a truncation mutation, whereas the HCM-associated mutation was a missense mutation.⁴⁷ In addition, we found DCM-associated mutations in *ANKRD1*.⁹⁴

The fourth group is related to intracellular Ca^{2+} handling. As muscle contraction is depending on the Ca^{2+} concentration, SERCA function in re-uptaking the intracellular Ca^{2+} to SR leads to relaxation of muscle. Phospholamban is an inhibitory molecule of SERCA, which is physiologically active when phosphorylated by protein kinase A (PKA).⁹⁵ Functional analysis of phospholamban gene (*PLN*) mutations found in DCM showed that the mutation was constitutive active; that is, inhibiting SERCA.^{96,97} In contrast, a truncation mutation of *PLN*, that is loss of *PLN* function, is recently reported in familial HCM.⁹⁸ Although *PLN* deficiency in mice resulted in enhanced contractility,⁹⁹ no cardiac hypertrophy was observed in the mice. In addition, loss of *PLN* rescued DCM phenotype¹⁰⁰ in MLP knock-out mice, and a dominant-negative form of *PLN* prevented heart failure in cardiomyopathic hamster BIO14.6,¹⁰¹ which is known to be caused by *SAGD* deficiency.¹⁰² These observations suggest that functional impairment of phospholamban may prevent systolic dysfunction but not directly involved in the cardiac hypertrophy. Moreover, promoter mutations of *PLN*, which increased transcription, were recently reported in HCM.^{103,104} As transgenic mice over-expressing *PLN* did not show cardiac hypertrophy, rather they showed systolic dysfunction,¹⁰⁵ pathological significance of *PLN* promoter mutations in HCM remains to be clarified.

The other mutations found in DCM include G4.5 gene (tafazzin, *TAZ*, Barth's syndrome),¹⁰⁶ fukutin gene (*FKTN*),¹⁰⁷ desmoplakin gene (*DSP*),¹⁰⁸ plakoglobin gene (*JUP*)¹⁰⁹ mutations. These mutations, however, were not found in 'pure' DCM and found in 'syndromic' DCM that is accompanied by disorders and/or dysfunction in skeletal muscle, skin or hair. An example is that *FKTN* mutation was not found in pure DCM, but was found in skeletal myopathy accompanied by DCM and an early sign of *FKTN* mutation-associated DCM was hyper-CKemia.¹¹⁰

MUTATIONS IN OTHER CARDIOMYOPATHIES

Disease-causing gene mutations can also be identified in other cardiomyopathies. As shown in Table 1, mutations in sarcomere proteins were found in RCM. It is interesting to note that *MYH7*, *TNNT2* and *TNNI3* mutations were associated with RCM, HCM and DCM. Molecular basis of the differences between RCM-associated mutations and HCM-associated mutations was that the RCM-associated mutations showed much greater Ca^{2+} sensitization than the HCM-associated mutations, as demonstrated for *TNNT2*¹¹¹ and *TNNI3*¹¹² mutations. In accordance with these findings, it was reported that restrictive phenotype (RCM-like HCM) was uncommon in HCM and may represent a poor prognosis form with severe diastolic dysfunction.¹¹³ On the other hand, the difference between

RCM-associated mutations and DCM-associated mutations is not clear, but a gene-dose effect could be involved in the difference because RCM-associated *TNNI3* mutation was found in heterozygous state,¹¹⁴ whereas the DCM-associated *TNNI3* mutation was found in homozygous state.¹¹⁵

LVNC is a recently described cardiomyopathy where ventricular trabeculations was poorly developed, and mutations in *MYH7*,¹¹⁶ *CACT*,¹¹⁷ *DES*,⁷⁸ *LMNA*,¹¹⁸ *TAZ*,¹¹⁹ *DTNA*,¹²⁰ and *LDB3*⁷⁶ were reported in LVNC (Table 1). Molecular mechanisms of the mutations in causing LVNC are not elucidated. In a mouse model, deficiency of BMP10 resulted in LVNC phenotype.¹²¹ BMP10 is a member of TGF β family, which is expressed mainly in the heart, and has an important function in morphogenesis of the heart.¹²² Therefore, LVNC might be a developmental error in the hearts carrying the mutations in components of sarcomere and/or sarcolemma. Interestingly, a rare polymorphism of BMP10 gene was found in hypertensive DCM, which decreased binding to Tcap and increased extracellular secretion of BMP10 facilitating the remodeling of hypertensive hearts.¹²³

Another primary cardiomyopathy AVRC has also been investigated for disease-causing mutations¹²⁴ (Table 1). As the ARVC-associated mutations can be found in genes for plakoglobin (*JUP*),¹²⁵ desmoplakin (*DSP*),¹²⁶ plakophilin-2 (*PKP2*)¹²⁷ and desmoglein (*DSG3*),¹²⁸ they were considered to disrupt cell-cell contacts via desmosomes. *RYR2* mutations were also reported in ARVC,¹²⁹ linking cardiomyopathy to channelopathy. Promoter variant of TGF β 3 was also reported in ARVC,¹³⁰ but its pathological significance remains to be resolved.

CONCLUSION

In this review, gene mutations found in the hereditary cardiomyopathy are summarized. Each family or patient has usually only one disease-causing mutation, but the primary cardiomyopathy is both clinically and etiologically heterogeneous even in a specific clinical type (HCM, DCM, RCM, ARVC and LVNC). As different causes result in the same phenotype, there may be several pathways in the pathogenesis of primary cardiomyopathy, such as abnormalities in the Ca^{2+} sensitivity, stretch response, stress response and others. Intervention of these common pathways will be a therapeutic or preventive strategy for hereditary cardiomyopathy caused by different mutations. In this respect, it is noteworthy that administration of a Ca^{2+} sensitizing chemical compound SCH00013¹³¹ prolonged the disease onset, improved the survival prognosis and ameliorated the cardiac remodeling in a DCM model animal, *LMNA* knock-in mice.¹³²

ACKNOWLEDGEMENTS

This work was supported in part by Grant-in-Aids for Scientific Research from the Ministry of Education, Culture, Sports, Science and Technology, Japan, research grant for Idiopathic Cardiomyopathy from the Ministry of Health, Labor and Welfare, Japan, and grants for Basic Scientific Cooperation Program between Japan and Korea from the Japan Society for the Promotion of Science and the Korea Science and Engineering Foundation.

- 1 Maron, B. J., Towbin, J. A., Thiene, G., Antzelevitch, C., Corrado, D., Arnett, D. *et al.* Contemporary definitions and classification of the cardiomyopathies: an American Heart Association Scientific Statement from the Council on Clinical Cardiology, Heart Failure and Transplantation Committee; Quality of Care and Outcomes Research and Functional Genomics and Translational Biology Interdisciplinary Working Groups; and Council on Epidemiology and Prevention. *Circulation* **113**, 1807–1816 (2006).
- 2 Towbin, J. A. & Bowles, N. E. The failing heart. *Nature* **415**, 227–233 (2002).
- 3 Ahmad, F., Seidman, J. G. & Seidman, C. E. The genetic basis for cardiac remodeling. *Annu. Rev. Genomics Hum. Genet.* **6**, 185–216 (2006).
- 4 Kushwaha, S. S., Fallon, J. & Fuster, V. Restrictive cardiomyopathy. *N. Engl. J. Med.* **336**, 267–276 (1997).

- 5 Seidman, J. G. & Seidman, C. The genetic basis for cardiomyopathy: from mutation identification to mechanistic paradigms. *Cell* **104**, 557–567 (2001).
- 6 Goerss, J. B., Michels, V. V., Burnett, J., Driscoll, D. J., Miller, F., Rodeheffer, R. *et al.* Frequency of familial dilated cardiomyopathy. *Eur. Heart J.* **16**, 02–04 (1995).
- 7 Mestroni, L., Rocco, C., Gregori, D., Sinagra, G., Di Lenarda, A., Miocic, S. *et al.* Familial dilated cardiomyopathy: evidence for genetic and phenotypic heterogeneity. Heart Muscle Disease Study Group. *J. Am. Coll. Cardiol.* **34**, 181–190 (1999).
- 8 Geisterfer-Lowrance, A. A. T., Kass, S., Tanigawa, G., Vosberg, H. P., McKenna, W., Seidman, C. E. *et al.* A molecular basis for familial hypertrophic cardiomyopathy: a beta cardiac myosin heavy chain gene missense mutation. *Cell* **62**, 999–1006 (1990).
- 9 Nishi, H., Kimura, A., Harada, H., Adachi, K., Koga, Y., Sasazuki, T. *et al.* Possible gene dose effect of a mutant cardiac beta-myosin heavy chain gene on the clinical expression of familial hypertrophic cardiomyopathy. *Biochem. Biophys. Res. Commun.* **200**, 549–556 (1994).
- 10 Kimura, A., Harada, H., Park, J. E., Nishi, H., Satoh, M., Takahashi, M. *et al.* Mutations in the cardiac troponin I gene associated with hypertrophic cardiomyopathy. *Nature Genet.* **16**, 379–382 (1997).
- 11 Arad, M., Seidman, J. G. & Seidman, C. E. Phenotypic diversity in hypertrophic cardiomyopathy. *Hum. Mol. Genet.* **11**, 2499–2506 (2002).
- 12 Kimura, A. Molecular etiology and pathogenesis of hereditary cardiomyopathy. *Circ. J.* **72**, A38–A48 (2008).
- 13 Watkins, H., Rosenzweig, A., Hwang, D. S., Levi, T., McKenna, W. *et al.* Characteristics and prognostic implications of myosin missense mutations in familial hypertrophic cardiomyopathy. *N. Engl. J. Med.* **326**, 1108–1114 (1992).
- 14 Harada, H., Kimura, A., Nishi, H., Sasazuki, T. & Toshima, H. A missense mutation of cardiac beta-myosin heavy chain gene linked to familial hypertrophic cardiomyopathy in affected Japanese families. *Biochem. Biophys. Res. Commun.* **194**, 791–798 (1993).
- 15 Hwang, T. H., Lee, W. H., Kimura, A., Satoh, M., Nakamura, T., Kim, M. K. *et al.* Early expression of a malignant phenotype of familial hypertrophic cardiomyopathy associated with a Gly716Arg myosin heavy chain mutation in a Korean family. *Am. J. Cardiol.* **82**, 1509–1513 (1998).
- 16 Nishi, H., Kimura, A., Harada, H., Koga, Y., Adachi, K., Matsuyama, K., Koyanagi, T. *et al.* A myosin missense mutation, not a null allele, causes familial hypertrophic cardiomyopathy. *Circulation* **91**, 2911–2915 (1995).
- 17 Koga, Y., Toshima, H., Kimura, A., Harada, H., Koyanagi, T., Nishi, H. *et al.* Clinical manifestations of hypertrophic cardiomyopathy with mutations in the cardiac beta-myosin heavy chain gene or cardiac troponin T gene. *J. Card. Fail.* **2**, S97–S103 (1996).
- 18 Rayment, I., Holden, H. M., Sellers, J. R., Fananapazir, L. & Epstein, N. D. Structural interpretation of the mutations in the beta-cardiac myosin that have been implicated in familial hypertrophic cardiomyopathy. *Proc. Natl. Acad. Sci. USA* **92**, 3864–3868 (1995).
- 19 Watkins, H., McKenna, W. J., Thierfelder, L., Suk, H. J., Anan, R. *et al.* Mutations in the genes for cardiac troponin T and alpha-tropomyosin in hypertrophic cardiomyopathy. *N. Engl. J. Med.* **332**, 1058–1064 (1995).
- 20 Varnava, A. M., Elliott, P. M., Baboonian, C., Davison, F., Davies, M. J. & McKenna, W. J. Hypertrophic cardiomyopathy: histopathological features of sudden death in cardiac troponin T disease. *Circulation* **104**, 1380–1384 (2001).
- 21 Niimura, H., Patton, K. K., McKenna, W. J., Soultis, J., Maron, B. J., Seidman, J. G. *et al.* Sarcomere protein gene mutations in hypertrophic cardiomyopathy of the elderly. *Circulation* **105**, 446–451 (2002).
- 22 Kubo, T., Kitaoka, H., Okawa, M., Matsumura, Y., Hitomi, N., Yamasaki, N. *et al.* Lifelong left ventricular remodeling of hypertrophic cardiomyopathy caused by a founder frameshift deletion mutation in the cardiac myosin-binding protein C gene among Japanese. *J. Am. Coll. Cardiol.* **46**, 1737–1743 (2005).
- 23 Sweeney, H. L., Straceski, A. J., Leinwand, L. A., Tikunov, B. A. & Faust, L. Heterologous expression of a cardiomyopathic myosin that is defective in its actin interaction. *J. Biol. Chem.* **269**, 1603–1605 (1994).
- 24 Thierfelder, L., Watkins, H., MacRae, C., Lamas, R., McKenna, W., Vosberg, H. P. *et al.* Alpha-tropomyosin and cardiac troponin T mutations cause familial hypertrophic cardiomyopathy: a disease of the sarcomere. *Cell* **77**, 701–712 (1994).
- 25 Yanaga, F., Morimoto, S. & Ohtsuki, I. Ca²⁺ sensitization and potentiation of the maximum level of myofibrillar ATPase activity caused by mutations of troponin T found in familial hypertrophic cardiomyopathy. *J. Biol. Chem.* **274**, 8806–8812 (1999).
- 26 Bottinelli, R., Coviello, D. A., Redwood, C. S., Pellegrino, M. A., Maron, B. J., Spirito, P. *et al.* A mutant tropomyosin that causes hypertrophic cardiomyopathy is expressed *in vivo* and associated with an increased calcium sensitivity. *Circ. Res.* **82**, 106–115 (1998).
- 27 Elliott, K., Watkins, H. & Redwood, C. S. Altered regulatory properties of human cardiac troponin I mutants that cause hypertrophic cardiomyopathy. *J. Biol. Chem.* **275**, 22069–22074 (2000).
- 28 Witt, C. C., Gerull, B., Davies, M. J., Centner, T., Linke, W. A. & Thierfelder, L. Hypercontractile properties of cardiac muscle fibers in a knock-in mouse model of cardiac myosin-binding protein-C. *J. Biol. Chem.* **276**, 5353–5359 (2001).
- 29 Roopnarine, O. Mechanical defects of muscle fibers with myosin light chain mutants that cause cardiomyopathy. *Biophys. J.* **84**, 2440–2449 (2003).
- 30 Pinto, J. R., Parvatiyar, M. S., Jones, M. A., Liang, J., Ackerman, M. J. & Potter, J. D. A functional and structural study of troponin C mutations related to hypertrophic cardiomyopathy. *J. Biol. Chem.* **284**, 19090–19100 (2009).
- 31 Tyska, M. J., Hayes, E., Giewat, M., Seidman, C. E., Seidman, J. G. & Warshaw, D. M. Single-molecule mechanics of R403Q cardiac myosin isolated from the mouse model of familial hypertrophic cardiomyopathy. *Circ. Res.* **86**, 737–744 (2000).
- 32 Satoh, M., Takahashi, M., Sakamoto, T., Hiroe, M., Marumo, F. & Kimura, A. Structural analysis of the titin gene in hypertrophic cardiomyopathy: identification of a novel disease gene. *Biochem. Biophys. Res. Commun.* **262**, 411–417 (1999).
- 33 Hayashi, T., Arimura, T., Itoh-Satoh, M., Ueda, K., Hohda, S., Inagaki, N. *et al.* Tcap gene mutations in hypertrophic cardiomyopathy and dilated cardiomyopathy. *J. Am. Coll. Cardiol.* **44**, 2192–2201 (2004).
- 34 Cazorla, O., Wu, Y., Irving, T. C. & Granzier, H. Titin-based modulation of calcium sensitivity of active tension in mouse skinned cardiac myocytes. *Circ. Res.* **88**, 1028–1035 (2001).
- 35 Fujita, H., Labeit, D., Gerull, B., Labeit, S. & Granzier, H. L. Titin isoform-dependent effect of calcium on passive myocardial tension. *Am. J. Physiol. Heart Circ. Physiol.* **287**, H2528–H2534 (2004).
- 36 Fuchs, F. & Martyn, D. A. Length-dependent Ca(2+) activation in cardiac muscle: some remaining questions. *J. Muscle Res. Cell Motil.* **26**, 199–212 (2005).
- 37 Geier, C., Perrot, A., Ozcelik, C., Binner, P., Counsell, D., Hoffmann, K. *et al.* Mutations in the human muscle LIM protein gene in families with hypertrophic cardiomyopathy. *Circulation* **107**, 1390–1395 (2003).
- 38 Gehmlich, K., Geier, C., Osterziel, K. J., Van der Ven, P. F. & Fürst, D. O. Decreased interactions of mutant muscle LIM protein (MLP) with N-RAP and alpha-actinin and their implication for hypertrophic cardiomyopathy. *Cell Tissue Res.* **317**, 129–136 (2004).
- 39 Mohapatra, B., Jimenez, S., Lin, J. H., Bowles, K. R., Coveler, K. J., Marx, J. G. *et al.* Mutations in the muscle LIM protein and alpha-actinin-2 genes in dilated cardiomyopathy and endocardial fibroelastosis. *Mol. Genet. Metab.* **80**, 207–215 (2003).
- 40 Hayashi, T., Arimura, T., Ueda, K., Shibata, H., Hohda, S., Takahashi, M. *et al.* Identification and functional analysis of a caveolin-3 mutation associated with familial hypertrophic cardiomyopathy. *Biochem. Biophys. Res. Commun.* **313**, 178–184 (2004).
- 41 Vasile, V. C., Ommen, S. R., Edwards, W. D. & Ackerman, M. J. A missense mutation in a ubiquitously expressed protein, vinculin, confers susceptibility to hypertrophic cardiomyopathy. *Biochem. Biophys. Res. Commun.* **345**, 998–1003 (2006).
- 42 Wang, X., Osinska, H., Klevitsky, R., Gerdes, A. M., Nieman, M., Lorenz, J. *et al.* Expression of R120G-alphaB-crystallin causes aberrant desmin and alphaB-crystallin aggregation and cardiomyopathy in mice. *Circ. Res.* **89**, 84–91 (2001).
- 43 Landstrom, A. P., Weisleder, N., Bataalden, K. B., Bos, J. M., Tester, D. J., Ommen, S. R. *et al.* Mutations in JPH2-encoded junctophilin-2 associated with hypertrophic cardiomyopathy in humans. *J. Mol. Cell Cardiol.* **42**, 1026–1035 (2007).
- 44 Arimura, T., Matsumoto, Y., Okazaki, O., Hayashi, M., Takahashi, M., Inagaki, N. *et al.* Structural analysis of obscurin gene in hypertrophic cardiomyopathy. *Biochem. Biophys. Res. Commun.* **362**, 281–287 (2007).
- 45 Arimura, T., Bos, M. J., Sato, A., Kubo, T., Okamoto, H., Nishi, H. *et al.* Cardiac ankyrin repeat protein gene (ANKRD1) mutations in hypertrophic cardiomyopathy. *J. Am. Coll. Cardiol.* **54**, 334–342 (2009).
- 46 Rajasekaran, N. S., Connell, P., Christians, E. S., Yan, L. J., Taylor, R. P., Orosz, A. *et al.* Human alpha B-crystallin mutation causes oxidative stress and protein aggregation cardiomyopathy in mice. *Cell* **130**, 427–439 (2007).
- 47 Matsumoto, Y., Hayashi, T., Inagaki, N., Takahashi, M., Hiroi, S., Nakamura, T. *et al.* Functional analysis of titin/connectin N2-B mutations found in cardiomyopathy. *J. Muscle Res. Cell Motil.* **26**, 367–374 (2005).
- 48 Inagaki, N., Hayashi, T., Arimura, T., Koga, Y., Takahashi, M., Shibata, H. *et al.* Alpha B-crystallin mutation in dilated cardiomyopathy. *Biochem. Biophys. Res. Commun.* **342**, 379–386 (2006).
- 49 Kikuchi, T., Oka, N., Koga, A., Miyazaki, H., Ohmura, H. & Imaizumi, T. Behavior of caveolae and caveolin-3 during the development of myocyte hypertrophy. *J. Cardiovasc. Pharmacol.* **45**, 204–210 (2005).
- 50 Koga, A., Oka, N., Kikuchi, T., Miyazaki, H., Kato, S. & Imaizumi, T. Adenovirus-mediated overexpression of caveolin-3 inhibits rat cardiomyocyte hypertrophy. *Hypertension* **42**, 213–219 (2003).
- 51 Young, P., Ehler, E. & Gautel, M. Obscurin, a giant sarcomeric Rho guanine nucleotide exchange factor protein involved in sarcomere assembly. *J. Cell Biol.* **154**, 123–136 (2001).
- 52 Aihara, Y., Kurabayashi, M., Saito, Y., Ohyama, Y., Tanaka, T., Takeda, S. *et al.* Cardiac ankyrin repeat protein is a novel marker of cardiac hypertrophy: role of M-CAT element within the promoter. *Hypertension* **36**, 48–53 (2000).
- 53 Witt, S. H., Labeit, D., Granzier, H., Labeit, S. & Witt, C. C. Dimerization of the cardiac ankyrin protein CARP: implications for MARP titin-based signaling. *J. Muscle Res. Cell Motil.* **26**, 1–8 (2006).
- 54 Towbin, J. A., Hejtmanic, J. F., Brink, P., Gelb, B., Zhu, X. M., Chamberlain, J. S. *et al.* X-linked dilated cardiomyopathy. Molecular genetic evidence of linkage to the Duchenne muscular dystrophy (dystrophin) gene at the Xp21 locus. *Circulation* **87**, 1854–1865 (1993).
- 55 Cohen, N. & Muntoni, F. Multiple pathogenetic mechanisms in X linked dilated cardiomyopathy. *Heart* **90**, 835–841 (2004).
- 56 Muntoni, F., Torelli, S. & Ferlini, A. Dystrophin and mutations: one gene, several phenotypes. *Lancet Neurol.* **2**, 731–740 (2003).
- 57 Finsterer, J. & Stöllberger, C. The heart in human dystrophinopathies. *Cardiology* **99**, 1–19 (2003).
- 58 Lapidus, K. A., Kakkar, R. & McNally, E. M. The dystrophin glycoprotein complex: signaling strength and integrity for the sarcolemma. *Circ. Res.* **94**, 1023–1031 (2004).
- 59 Tsubata, S., Bowles, K. R., Vatta, M., Zintz, C., Titus, J., Muhonen, L. *et al.* Mutations in the human delta-sarcoglycan gene in familial and sporadic dilated cardiomyopathy. *J. Clin. Invest.* **106**, 655–662 (2000).

- 60 Knöll, R., Postel, R., Wang, J., Krätznner, R., Hennecke, G., Vacaru, A. M. *et al.* Laminin- α 4 and integrin-linked kinase mutations cause human cardiomyopathy via simultaneous defects in cardiomyocytes and endothelial cells. *Circulation* **116**, 515–525 (2007).
- 61 Towbin, J. A. & Bowles, N. E. Genetic abnormalities responsible for dilated cardiomyopathy. *Curr. Cardiol. Rep.* **2**, 475–480 (2000).
- 62 Olson, T. M., Michels, V. V., Thibodeau, S. N., Tai, Y. S. & Keating, M. T. Actin mutations in dilated cardiomyopathy, a heritable form of heart failure. *Science* **280**, 750–752 (1998).
- 63 Mogensen, J., Klausen, I. C., Pedersen, A. K., Egeblad, H., Bross, P., Kruse, T. A. *et al.* Alpha-cardiac actin is a novel disease gene in familial hypertrophic cardiomyopathy. *J. Clin. Invest.* **103**, R39–R43 (1999).
- 64 Vang, S., Corydon, T. J., Børglum, A. D., Scott, M. D., Frydman, J., Mogensen, J. *et al.* Actin mutations in hypertrophic and dilated cardiomyopathy cause inefficient protein folding and perturbed filament formation. *FEBS J.* **272**, 2037–2049 (2005).
- 65 Kamisago, M., Sharma, S. D., DePalma, S. R., Solomon, S., Sharma, P., McDonough, B. *et al.* Mutations in sarcomere protein genes as a cause of dilated cardiomyopathy. *N. Engl. J. Med.* **343**, 1688–1696 (2000).
- 66 Morimoto, S., Lu, Q. W., Harada, K., Takahashi-Yanaga, F., Minakami, R., Ohta, M. *et al.* Ca²⁺-desensitizing effect of a deletion mutation Delta K210 in cardiac troponin T that causes familial dilated cardiomyopathy. *Proc. Natl. Acad. Sci. USA* **99**, 913–918 (2002).
- 67 Chang, A. N. & Potter, J. D. Sarcomeric protein mutations in dilated cardiomyopathy. *Heart Fail. Rev.* **10**, 225–235 (2005).
- 68 Itoh-Satoh, M., Hayashi, T., Nishi, H., Koga, Y., Arimura, T., Koyanagi, T. *et al.* Titin mutations as the molecular basis for dilated cardiomyopathy. *Biochem. Biophys. Res. Commun.* **291**, 385–393 (2002).
- 69 Knöll, R., Hoshijima, M., Hoffman, H. M., Person, V., Lorenzen-Schmidt, I., Bang, M. L. *et al.* The cardiac mechanical stretch sensor machinery involves a Z disc complex that is defective in a subset of human dilated cardiomyopathy. *Cell* **111**, 943–955 (2002).
- 70 Zhou, Q., Ruiz-Lozano, P., Martone, M. E. & Chen, J. Cypher, a striated muscle-restricted PDZ and LIM domain-containing protein, binds to alpha-actinin-2 and protein kinase C. *J. Biol. Chem.* **274**, 19807–19813 (1999).
- 71 Frey, N., Richardson, J. A. & Olson, E. N. Calsarcins, a novel family of sarcomeric calcineurin-binding proteins. *Proc. Natl. Acad. Sci. USA* **97**, 14632–14637 (2000).
- 72 Wilkins, B. J. & Molkenkin, J. D. Calcium-calcineurin signaling in the regulation of cardiac hypertrophy. *Biochem. Biophys. Res. Commun.* **322**, 1178–1191 (2004).
- 73 Heineke, J. & Molkenkin, J. D. Regulation of cardiac hypertrophy by intracellular signalling pathways. *Nature Rev. Mol. Cell Biol.* **7**, 589–600 (2006).
- 74 Heineke, J., Ruetten, H., Willenbockel, C., Gross, S. C., Naguib, M., Schaefer, A. *et al.* Attenuation of cardiac remodeling after myocardial infarction by muscle LIM protein-calcineurin signaling at the sarcomeric Z-disc. *Proc. Natl. Acad. Sci. USA* **102**, 1655–1660 (2005).
- 75 Arimura, T., Hayashi, T., Terada, H., Lee, S. Y., Zhou, Q., Takahashi, M. *et al.* A Cypher/ZASP mutation associated with dilated cardiomyopathy alters the binding affinity to protein kinase C. *J. Biol. Chem.* **279**, 6746–6752 (2004).
- 76 Vatta, M., Mohapatra, B., Jimenez, S., Sanchez, X., Faulkner, G., Perles, Z. *et al.* Mutations in Cypher/ZASP in patients with dilated cardiomyopathy and left ventricular non-compaction. *J. Am. Coll. Cardiol.* **42**, 2014–2027 (2003).
- 77 Arimura, T., Inagaki, N., Hayashi, T., Shichi, D., Sato, A., Hinohara, K. *et al.* Impaired binding of ZASP/Cypher with phosphoglucomutase 1 is associated with dilated cardiomyopathy. *Cardiovasc. Res.* **83**, 80–88 (2009).
- 78 Li, D., Tapscoft, T., Gonzalez, O., Burch, P. E., Quiñones, M. A., Zoghbi, W. A. *et al.* Desmin mutation responsible for idiopathic dilated cardiomyopathy. *Circulation* **100**, 461–464 (1999).
- 79 Olson, T. M., Illenberger, S., Kishimoto, N. Y., Huttelmaier, S., Keating, M. T. & Jockusch, B. M. Metavinculin mutations alter actin interaction in dilated cardiomyopathy. *Circulation* **105**, 431–437 (2002).
- 80 Taylor, M. R., Slavov, D., Ku, L., Di Lenarda, A., Sinagra, G., Carniel, E. *et al.* Prevalence of desmin mutations in dilated cardiomyopathy. *Circulation* **115**, 1244–1251 (2007).
- 81 Duboscq-Bidot, L., Xu, P., Charon, P., Neyroud, N., Dilanian, G., Millaire, A. *et al.* Mutations in the Z-band protein myopalladin gene and idiopathic dilated cardiomyopathy. *Cardiovasc. Res.* **77**, 118–125 (2008).
- 82 Fatkin, D., MacRae, C., Sasaki, T., Wolff, M. R., Porcu, M., Frenneaux, M. *et al.* Missense mutations in the rod domain of the lamin A/C gene as causes of dilated cardiomyopathy and conduction-system disease. *N. Engl. J. Med.* **341**, 1715–1724 (1999).
- 83 Bonne, G., Di Bartetta, M. R., Varnous, S., Bécane, H. M., Hammouda, E. H., Merlini, L. *et al.* Mutations in the gene encoding lamin A/C cause autosomal dominant Emery-Dreifuss muscular dystrophy. *Nature Genet.* **21**, 285–288 (1999).
- 84 Bione, S., Small, K., Aksmanovic, V. M., D'Urso, M., Ciccodicola, A., Merlini, L. *et al.* Identification of new mutations in the Emery-Dreifuss muscular dystrophy gene and evidence for genetic heterogeneity of the disease. *Hum. Mol. Genet.* **4**, 1859–1863 (1995).
- 85 Morris, G. E. & Manilal, S. Heart to heart: from nuclear proteins to Emery-Dreifuss muscular dystrophy. *Hum. Mol. Genet.* **8**, 1847–1851 (1999).
- 86 Sylvius, N. & Tesson, F. Lamin A/C and cardiac diseases. *Curr. Opin. Cardiol.* **21**, 159–165 (2006).
- 87 Arimura, T., Helbling-Leclerc, A., Massart, C., Varnous, S., Niel, F., Lacène, E. *et al.* Mouse model carrying H222P-Lmna mutation develops muscular dystrophy and dilated cardiomyopathy similar to human striated muscle laminopathies. *Hum. Mol. Genet.* **14**, 155–169 (2005).
- 88 Muchir, A., Pavlidis, P., Decostre, V., Herron, A. J., Arimura, T., Bonne, G. *et al.* Activation of MAPK pathways links LMNA mutations to cardiomyopathy in Emery-Dreifuss muscular dystrophy. *J. Clin. Invest.* **117**, 1282–1293 (2007).
- 89 Bienengraeber, M., Olson, T. M., Selivanov, V. A., Kathmann, E. C., O'Coilain, F., Gao, F. *et al.* ABCC9 mutations identified in human dilated cardiomyopathy disrupt catalytic KATP channel gating. *Nature Genet.* **36**, 382–387 (2004).
- 90 McNair, W. P., Ku, L., Taylor, M. R., Fain, P. R., Dao, D., Wolfel, E. *et al.* SCN5A mutation associated with dilated cardiomyopathy, conduction disorder, and arrhythmia. *Circulation* **110**, 2163–2167 (2004).
- 91 Lehnart, S. E., Ackerman, M. J., Benson, D. W. Jr., Brugada, R., Clancy, C. E., Donahue, J. K. *et al.* Inherited arrhythmias: a National Heart, Lung, and Blood Institute and Office of Rare Diseases workshop consensus report about the diagnosis, phenotyping, molecular mechanisms, and therapeutic approaches for primary cardiomyopathies of gene mutations affecting ion channel function. *Circulation* **116**, 2325–2345 (2007).
- 92 Arimura, T., Hayashi, T., Matsumoto, Y., Shibata, H., Hiroi, S., Nakamura, T. *et al.* Structural analysis of four and half LIM protein-2 in dilated cardiomyopathy. *Biochem. Biophys. Res. Commun.* **357**, 162–167 (2007).
- 93 Johannessen, M., Møller, S., Hansen, T., Moens, U. & Van Ghelue, M. The multifunctional roles of the four-and-a-half-LIM only protein FHL2. *Cell Mol. Life Sci.* **63**, 268–284 (2006).
- 94 Moulik, M., Vatta, M., Witt, S. H., Alora, A. M., Murphy, R. T., McKenna, W. J. *et al.* ANKRD -the gene encoding cardiac ankyrin repeat protein- is a novel dilated cardiomyopathy gene. *J. Am. Coll. Cardiol.* **54**, 325–333 (2009).
- 95 Hoshijima, M., Knöll, R., Pashmforoush, M. & Chien, K. R. Reversal of calcium cycling defects in advanced heart failure toward molecular therapy. *J. Am. Coll. Cardiol.* **48**, A15–A23 (2006).
- 96 Schmitt, J. P., Kamisago, M., Asahi, M., Li, G. H., Ahmad, F., Mende, U. *et al.* Dilated cardiomyopathy and heart failure caused by a mutation in phospholamban. *Science* **299**, 1410–1413 (2003).
- 97 Haghghi, K., Kolokathis, F., Gramolini, A. O., Waggoner, J. R., Pater, L., Lynch, R. A. *et al.* A mutation in the human phospholamban gene, deleting arginine 14, results in lethal, hereditary cardiomyopathy. *Proc. Natl. Acad. Sci. USA* **103**, 1388–1393 (2006).
- 98 Chiu, C., Tebo, M., Ingles, J., Yeates, L., Arthur, J. W., Lind, J. M. *et al.* Genetic screening of calcium regulation genes in familial hypertrophic cardiomyopathy. *J. Mol. Cell Cardiol.* **43**, 337–343 (2007).
- 99 Koss, K. L., Grupp, I. L. & Kranias, E. G. The relative phospholamban and SERCA2 ratio: a critical determinant of myocardial contractility. *Basic Res. Cardiol.* **92**, S17–S24 (1997).
- 100 Minamisawa, S., Hoshijima, M., Chu, G., Ward, C. A., Frank, K., Gu, Y. *et al.* Chronic phospholamban-sarcoplasmic reticulum calcium ATPase interaction is the critical calcium cycling defect in dilated cardiomyopathy. *Cell* **99**, 313–322 (1999).
- 101 Hoshijima, M., Ikeda, Y., Iwanaga, Y., Minamisawa, S., Date, M. O., Gu, Y. *et al.* Chronic suppression of heart-failure progression by a pseudophosphorylated mutant of phospholamban *in vivo* cardiac rAAV gene delivery. *Nature Med.* **8**, 864–871 (2002).
- 102 Nigro, V., Okazaki, Y., Belsito, A., Piluso, G., Matsuda, Y., Politano, L. *et al.* Identification of the Syrian hamster cardiomyopathy gene. *Hum. Mol. Genet.* **6**, 601–607 (1997).
- 103 Minamisawa, S., Sato, Y., Tatsuguchi, Y., Fujino, T., Imamura, S., Uetsuka, Y. *et al.* Mutation of the phospholamban promoter associated with hypertrophic cardiomyopathy. *Biochem. Biophys. Res. Commun.* **304**, 1–4 (2003).
- 104 Medin, M., Hermida-Prieto, M., Monserrat, L., Laredo, R., Rodriguez-Rey, J. C., Fernandez, X. *et al.* Mutational screening of phospholamban gene in hypertrophic and idiopathic dilated cardiomyopathy and functional study of the PLN-42 C>G mutation. *Eur. J. Heart Fail.* **9**, 37–43 (2007).
- 105 Kadambi, V. J., Ponniah, S., Harrer, J. M., Hoit, B. D., Dorn, G. W. II, Walsh, R. A. *et al.* Cardiac-specific overexpression of phospholamban alters calcium kinetics and resultant cardiomyocyte mechanics in transgenic mice. *J. Clin. Invest.* **97**, 533–539 (1996).
- 106 Barth, P. G., Valianpour, F., Bowen, V. M., Lam, J., Duran, M., Vaz, F. M. *et al.* X-linked cardioskeletal myopathy and neutropenia (Barth syndrome): an update. *Am. J. Med. Genet. A* **126**, 349–354 (2004).
- 107 Murakami, T., Hayashi, Y. K., Noguchi, S., Ogawa, M., Nonaka, I., Tanabe, Y. *et al.* Fukutin gene mutations cause dilated cardiomyopathy with minimal muscle weakness. *Ann. Neurol.* **60**, 597–602 (2006).
- 108 Norgett, E. E., Hatsell, S. J., Carvajal-Huerta, L., Cabezas, J. C., Common, J., Purkis, P. E. *et al.* Recessive mutation in desmoplakin disrupts desmoplakin-intermediate filament interactions and causes dilated cardiomyopathy, woolly hair and keratoderma. *Hum. Mol. Genet.* **9**, 2761–2766 (2000).
- 109 Uzumcu, A., Norgett, E. E., Dindar, A., Uyguner, O., Nisli, K., Kayserili, H. *et al.* Loss of desmoplakin isoform I causes early onset cardiomyopathy and heart failure in a Naxos-like syndrome. *J. Med. Genet.* **43**, e5 (2006).
- 110 Arimura, T., Hayashi, Y. K., Murakami, T., Oya, Y., Funabe, S., Hirasawa, E. A. *et al.* Mutational analysis of fukutin gene in dilated cardiomyopathy and hypertrophic cardiomyopathy. *Circ. J.* **73**, 158–161 (2009).
- 111 Pinto, J. R., Parvatiyar, M. S., Jones, M. A., Liang, J. & Potter, J. D. A troponin T mutation that causes infantile restrictive cardiomyopathy increases Ca²⁺ sensitivity of force development and impairs the inhibitory properties of troponin. *J. Biol. Chem.* **283**, 2156–2166 (2008).
- 112 Yumoto, F., Lu, Q. W., Morimoto, S., Tanaka, H., Kono, N., Nagata, K. *et al.* Drastic Ca²⁺ sensitization of myofilament associated with a small structural change in

- troponin I in inherited restrictive cardiomyopathy. *Biochem. Biophys. Res. Commun.* **338**, 1519–1526 (2005).
- 113 Kubo, T., Gimeno, J. R., Bahl, A., Steffensen, U., Steffensen, M., Osman, E. *et al.* Prevalence, clinical significance, and genetic basis of hypertrophic cardiomyopathy with restrictive phenotype. *J. Am. Coll. Cardiol.* **49**, 2419–2426 (2007).
- 114 Mogensen, J., Kubo, T., Duque, M., Uribe, W., Shaw, A., Murphy, R. *et al.* Idiopathic restrictive cardiomyopathy is part of the clinical expression of cardiac troponin I mutations. *J. Clin. Invest.* **111**, 209–216 (2003).
- 115 Murphy, R. T., Mogensen, J., Shaw, A., Kubo, T., Hughes, S. & McKenna, W. J. Novel mutation in cardiac troponin I in recessive idiopathic dilated cardiomyopathy. *Lancet* **363**, 371–372 (2004).
- 116 Budde, B. S., Binner, P., Waldmüller, S., Höhne, W., Blankenfeldt, W., Hassfeld, S. *et al.* Noncompaction of the ventricular myocardium is associated with a *de novo* mutation in the beta-myosin heavy chain gene. *PLoS ONE* **2**, e1362 (2007).
- 117 Monserrat, L., Hermida-Prieto, M., Fernandez, X., Rodríguez, I., Dumont, C., Cazón, L. *et al.* Mutation in the alpha-cardiac actin gene associated with apical hypertrophic cardiomyopathy, left ventricular non-compaction, and septal defects. *Eur. Heart J.* **28**, 1953–1961 (2007).
- 118 Hermida-Prieto, M., Monserrat, L., Castro-Beiras, A., Laredo, R., Soler, R., Peteiro, J. *et al.* Familial dilated cardiomyopathy and isolated left ventricular noncompaction associated with lamin A/C gene mutations. *Am. J. Cardiol.* **94**, 50–54 (2004).
- 119 Bleyl, S. B., Mumford, B. R., Thompson, V., Carey, J. C., Pysker, T. J., Chin, T. K. *et al.* Neonatal, lethal noncompaction of the left ventricular myocardium is allelic with Barth syndrome. *Am. J. Hum. Genet.* **61**, 868–872 (1997).
- 120 Ichida, F., Tsubata, S., Bowles, K. R., Haneda, N., Uese, K., Miyawaki, T. *et al.* Novel gene mutations in patients with left ventricular noncompaction or Barth syndrome. *Circulation* **103**, 1256–1263 (2001).
- 121 Chen, H., Shi, S., Acosta, L., Li, W., Lu, J., Bao, S. *et al.* BMP10 is essential for maintaining cardiac growth during murine cardiogenesis. *Development* **131**, 2219–2231 (2004).
- 122 Neuhaus, H., Rosen, V. & Thies, R. S. Heart specific expression of mouse BMP-10 a novel member of the TGF-beta superfamily. *Mech. Dev.* **80**, 181–184 (1999).
- 123 Nakano, N., Hori, H., Abe, M., Shibata, H., Arimura, T., Sasaoka, T. *et al.* Interaction of BMP10 with Tcap may modulate the course of hypertensive cardiac hypertrophy. *Am. J. Physiol. Heart Circ. Physiol.* **293**, H3396–H3403 (2007).
- 124 van Tintelen, J. P., Hofstra, R. M., Wiesfeld, A. C., van den Berg, M. P., Hauer, R. N. & Jongbloed, J. D. Molecular genetics of arrhythmogenic right ventricular cardiomyopathy: emerging horizon? *Curr. Opin. Cardiol.* **22**, 185–192 (2007).
- 125 McKoy, G., Protonotarios, N., Crosby, A., Tsatsopoulou, A., Anastasakis, A., Coonar, A. *et al.* Identification of a deletion in plakoglobin in arrhythmogenic right ventricular cardiomyopathy with palmoplantar keratoderma and woolly hair (Naxos disease). *Lancet* **355**, 2119–2124 (2000).
- 126 Alcalai, R., Metzger, S., Rosenheck, S., Meiner, V. & Chajek-Shaul, T. A recessive mutation in desmoplakin causes arrhythmogenic right ventricular dysplasia, skin disorder, and woolly hair. *J. Am. Coll. Cardiol.* **42**, 319–327 (2003).
- 127 Gerull, B., Heuser, A., Wichter, T., Paul, M., Basson, C. T., McDermott, D. A. *et al.* Mutations in the desmosomal protein plakophilin-2 are common in arrhythmogenic right ventricular cardiomyopathy. *Nature Genet.* **36**, 1162–1164 (2004).
- 128 Piliichou, K., Nava, A., Basso, C., Beffagna, G., Baucé, B., Lorenzon, A. *et al.* Mutations in desmoglein-2 gene are associated with arrhythmogenic right ventricular cardiomyopathy. *Circulation* **113**, 1171–1179 (2006).
- 129 Tiso, N., Stephan, D. A., Nava, A., Bagattin, A., Devaney, J. M., Stanchi, F. *et al.* Identification of mutations in the cardiac ryanodine receptor gene in families affected with arrhythmogenic right ventricular cardiomyopathy type 2 (ARVD2). *Hum. Mol. Genet.* **10**, 189–194 (2001).
- 130 Beffagna, G., Occhi, G., Nava, A., Vitiello, L., Ditadi, A., Basso, C. *et al.* Regulatory mutations in transforming growth factor-beta3 gene cause arrhythmogenic right ventricular cardiomyopathy type 1. *Cardiovasc. Res.* **65**, 366–373 (2005).
- 131 Tadano, N., Morimoto, S., Yoshimura, A., Miura, M., Yoshioka, K., Sakato, M. *et al.* SCH00013, a novel Ca(2+) sensitizer with positive inotropic and no chronotropic action in heart failure. *J. Pharmacol. Sci.* **97**, 53–60 (2005).
- 132 Arimura, T., Sato, R., Machida, N., Bando, H., Zhang, D. Y., Morimoto, S. *et al.* Improvement of left ventricular dysfunction and survival prognosis of dilated cardiomyopathy by administration of calcium sensitizer SCH00013 in a mouse model. *J. Am. Coll. Cardiol.* (in press).