

International Collaborations

TOP COLLABORATING INSTITUTIONS (2012-2017)

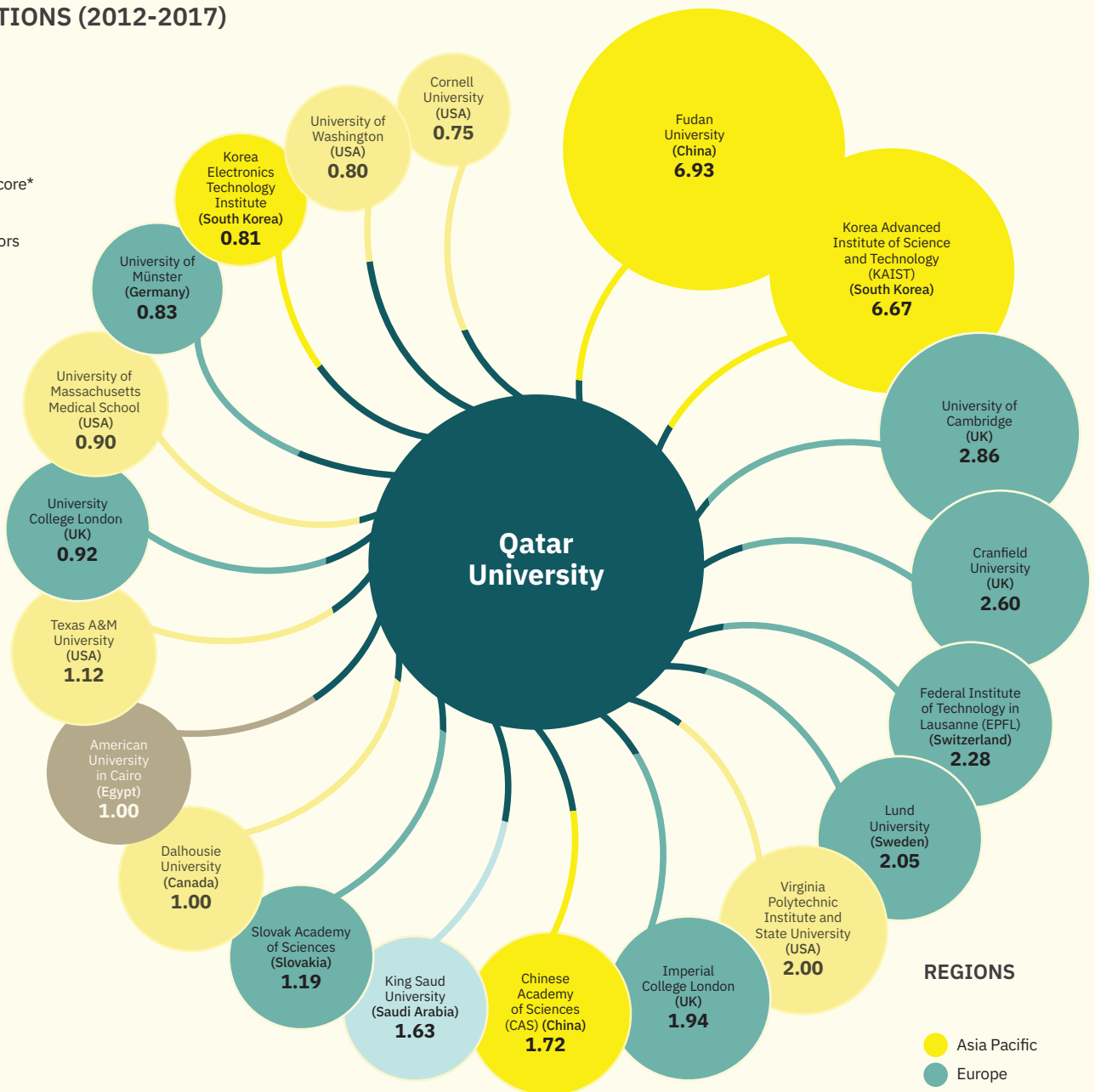
Data from the Nature Index (www.natureindex.com) shows the pattern of international high-quality science collaborations. The top diagram shows QU's top 20 collaborators based on collaboration score. The diagram also shows the balance of each relationship.

6.93

Collaboration score*

Equal contributors

Collaboration led by one partner



REGIONS

- Asia Pacific
- Europe
- West Asia
- North America
- South America
- Africa

GLOBAL REACH

Based on co-authored papers in the Nature Index from 2012 to 2017, QU collaborated most with institutions in the United States, followed by China and Germany.



* Collaboration score (CS) can be between QU and any other institution co-authoring at least one article in the 82 journals tracked by the Nature Index. CS is derived by adding up institutions' share of authorship.