

# SCIENTIFIC REPORTS



OPEN

## Allosteric Inhibition of Phosphoenolpyruvate Carboxylases is Determined by a Single Amino Acid Residue in Cyanobacteria

Masahiro Takeya<sup>1</sup>, Masami Yokota Hirai<sup>2</sup> & Takashi Osanai<sup>1,2</sup>

Received: 28 October 2016

Accepted: 14 December 2016

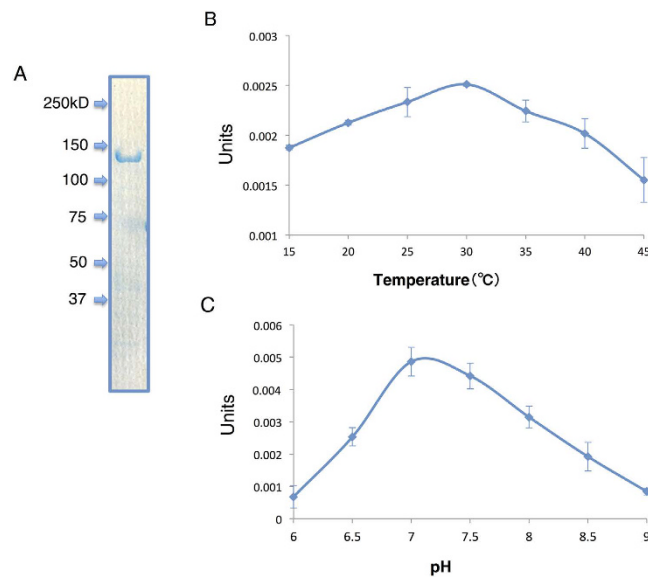
Published: 24 January 2017

Phosphoenolpyruvate carboxylase (PEPC) is an important enzyme for CO<sub>2</sub> fixation and primary metabolism in photosynthetic organisms including cyanobacteria. The kinetics and allosteric regulation of PEPCs have been studied in many organisms, but the biochemical properties of PEPC in the unicellular, non-nitrogen-fixing cyanobacterium *Synechocystis* sp. PCC 6803 have not been clarified. In this study, biochemical analysis revealed that the optimum pH and temperature of *Synechocystis* 6803 PEPC proteins were 7.3 and 30 °C, respectively. *Synechocystis* 6803 PEPC was found to be tolerant to allosteric inhibition by several metabolic effectors such as malate, aspartate, and fumarate compared with other cyanobacterial PEPCs. Comparative sequence and biochemical analysis showed that substitution of the glutamate residue at position 954 with lysine altered the enzyme so that it was inhibited by malate, aspartate, and fumarate. PEPC of the nitrogen-fixing cyanobacterium *Anabaena* sp. PCC 7120 was purified, and its activity was inhibited in the presence of malate. Substitution of the lysine at position 946 (equivalent to position 954 in *Synechocystis* 6803) with glutamate made *Anabaena* 7120 PEPC tolerant to malate. These results demonstrate that the allosteric regulation of PEPC in cyanobacteria is determined by a single amino acid residue, a characteristic that is conserved in different orders.

Cyanobacteria are a group of bacteria that perform oxygenic photosynthesis and fix carbon dioxide. Ribulose-1,5-bisphosphate carboxylase/oxygenase (RubisCO) is the most famous CO<sub>2</sub> fixing enzyme, which operates in the Calvin-Benson cycle<sup>1,2</sup>. Besides RubisCO, metabolic flux analysis revealed that phosphoenolpyruvate carboxylase (PEPC) [EC 4.1.1.31] accounts for 25% of CO<sub>2</sub> fixation in the unicellular cyanobacterium *Synechocystis* sp. PCC 6803 (hereafter *Synechocystis* 6803)<sup>3</sup>. PEPC is a crucial branch point enzyme determining the type of carbon fixation in photosynthetic organisms<sup>4</sup>. PEPC catalyses an irreversible carboxylation of phosphoenolpyruvate (PEP) with bicarbonate (HCO<sub>3</sub><sup>-</sup>) to generate oxaloacetate and inorganic phosphate in the presence of Mg<sup>2+</sup><sup>4</sup>. PEPC is conserved among plants, algae, cyanobacteria, archaea, and heterotrophic bacteria, but not among animals, fungi, and yeasts<sup>5</sup>. Cyanobacterial PEPC also plays an anaplerotic role in energy storage and biosynthesis of various metabolites by replenishing oxaloacetate to the citric acid cycle<sup>5</sup>.

The kinetics of PEPCs are diverse among organisms. Higher plants can be classified as C3-type, C4-type, and crassulacean acid metabolism (CAM) plants. PEPC is responsible for the primary carbon fixation in C4-type and CAM plants<sup>6,7</sup>. The affinity of PEPCs in C4-plants to bicarbonate is 10 times higher than that of PEPCs in C3-plants<sup>8,9</sup>. Most PEPCs are allosterically regulated by various metabolic effectors. Maize PEPCs are inhibited by malate or aspartate, and activated by glucose-6-phosphate<sup>10</sup>. *Escherichia coli* PEPC is inhibited by malate or aspartate, and activated by acetyl-CoA<sup>11</sup>. Cyanobacterial PEPCs are evolutionally diverse. One group has suggested that PEPCs of the orders *Oscillatoriales* and *Nostocales* (including the nitrogen-fixing cyanobacterium *Anabaena* sp. PCC 7120, hereafter *Anabaena* 7120) resemble C4-type PEPC because of the serine residue conserved among C4 plants at position 774<sup>12</sup>. However, subsequent sequence analysis has revealed that most PEPCs contain the conserved serine residue; nevertheless the kinetic properties of cyanobacteria PEPCs are diverse<sup>12</sup>. Therefore, there may be a different type of regulation in cyanobacterial PEPCs. Cyanobacterial PEPCs in the

<sup>1</sup>School of Agriculture, Meiji University, 1-1-1, Higashimita, Tama-ku, Kawasaki, Kanagawa 214-8571, Japan. <sup>2</sup>RIKEN Center for Sustainable Resource Science, 1-7-22 Suehiro-cho, Tsurumi-ku, Yokohama, Kanagawa 230-0045, Japan. Correspondence and requests for materials should be addressed to T.O. (email: tosanai@meiji.ac.jp)



**Figure 1. Biochemical analysis of *Synechocystis* 6803 phosphoenolpyruvate carboxylase (SyPEPC).**

(A) Purification of GST-tagged PEPC. Proteins were electrophoresed on an 8% SDS-PAGE gel, and stained with Instant Blue reagent. Arrowheads indicate the molecular weight. (B) Effect of temperature on SyPEPC activity. Data represent means of the values from three independent experiments. (C) Effect of pH on SyPEPC activity. Data represent relative values of means from three independent experiments. Four pmol (0.6  $\mu\text{g}$ ) of SyPEPC was used for the enzyme assay. One unit of PEPC activity was defined as the consumption of 1  $\mu\text{mol}$  NADPH per minute.

order *Nostocales*, *Coccochloris peniocystis*, and *Thermosynechococcus vulcanus* are inhibited by either malate or aspartate<sup>12–15</sup>. Several effectors regulate cyanobacterial PEPCs, but their effects are dependent on the taxonomic order of the PEPCs<sup>12</sup>. The biochemical properties, including  $V_{\text{max}}$  and  $K_{\text{m}}$  values, of several cyanobacterial PEPCs have been determined<sup>12,14,15</sup>, although those of the PEPCs in *Synechocystis* 6803 have not. A comparison of cyanobacterial PEPCs including both phylogenetic and biochemical analyses has also been lacking until now.

Here, using the model cyanobacterium *Synechocystis* 6803, we performed biochemical analysis using purified PEPC proteins. Our analysis demonstrated that a single amino acid substitution between glutamate and lysine at position 954 was important for allosteric regulation.

## Results

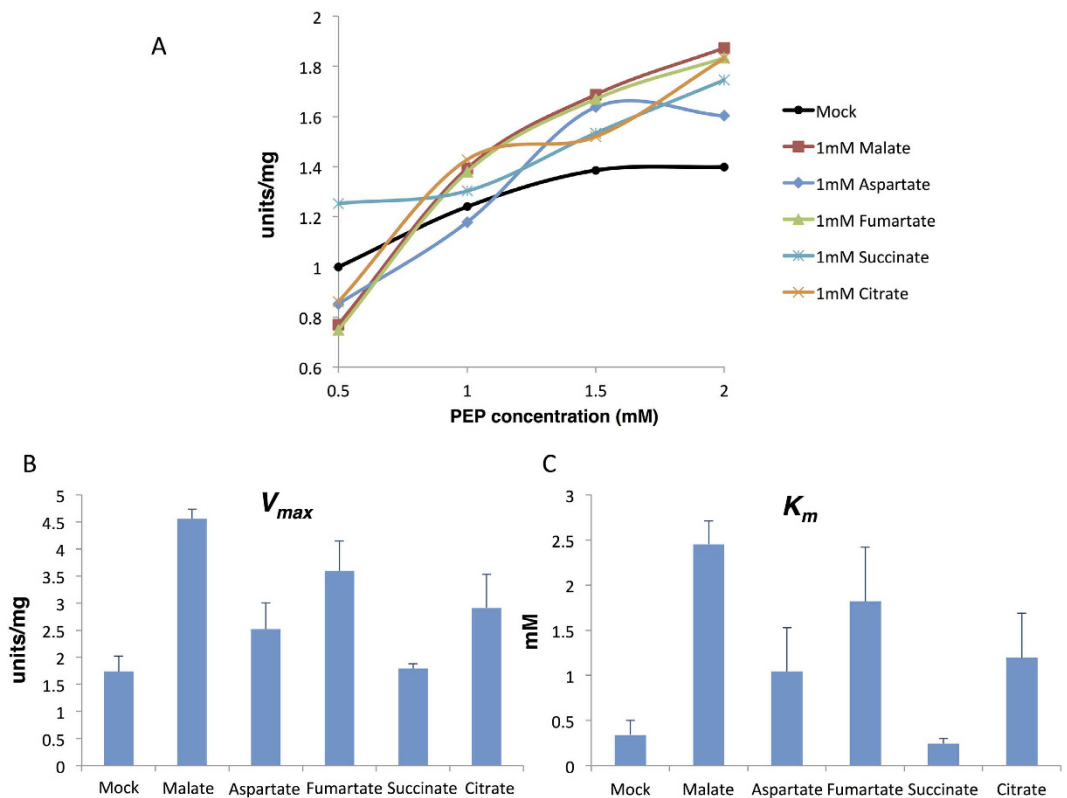
**Measurement of the kinetic parameters of and inhibitor effects on *Synechocystis* 6803 PEPC.** *Synechocystis* 6803 is one of the most studied cyanobacteria; nevertheless, the kinetic parameters of *Synechocystis* 6803 PEPC (SyPEPC) have not been determined until now. Glutathione *S*-transferase (GST)-tagged SyPEPC proteins were expressed in *E. coli* and purified by affinity chromatography (Fig. 1A). The enzymatic activity of SyPEPC was highest at pH 7.3 and 30 °C (Fig. 1B and C). Biochemical analysis revealed the  $V_{\text{max}}$  value of SyPEPC was 1.74 units/mg, and the  $K_{\text{m}}$  values of SyPEPC for PEP and  $\text{HCO}_3^-$  were 0.34 and 0.80 mM, respectively (Fig. 2A).

We next examined the effects of various metabolic effectors on SyPEPC activity. The enzyme assay was performed at the optimal pH 7.3 and temperature 30 °C using a half-saturating concentration of PEP. Aspartate decreased the SyPEPC activity to 85.2% (Table 1). The tricarboxylic acid cycle (TCA) metabolites malate, fumarate, and citrate reduced the SyPEPC activity to 75–86% (Table 1). Both malate and fumarate increased the  $V_{\text{max}}$  and  $K_{\text{m}}$  values for PEP (Fig. 2B and C).

To strengthen the integrity of our results, we performed biochemical assays using commercially available PEPCs and cell extracts from other organisms. The purified PEPCs of *Acetobacter* and *Zea mays* were inhibited by both aspartate and malate (Fig. S1A). The activity of PEPCs in *Nostoc* sp. NIES-3756 and *E. coli* DH5 $\alpha$  extracts were decreased by both aspartate and malate (Fig. S1B). These results were consistent with previous results<sup>12,16,17</sup>, confirming our data were reliable (Fig. S1C).

We tested the inhibitory effects of aspartate and malate at alkaline pH, because the inhibitory effect on *Thermosynechococcus vulcanus* PEPC was stronger at alkaline pH than at neutral pH<sup>15</sup>. The inhibitory effects of malate and aspartate on SyPEPC were enhanced at pH 9.0 compared with pH 7.3 (Fig. 3).

***In silico* prediction and biochemical assay identified a glutamate residue at position 954 as important for allosteric regulation.** To understand the differences among cyanobacterial PEPCs, phylogenetic analysis was performed. The phylogenetic tree of PEPCs built using maximum likelihood methods showed a classification dependent on order; the PEPCs of *Synechocystis* 6803, *Thermosynechococcus vulcanus*, and *Coccochloris peniocystis*, all three of which belong to the order *Chroococcales*, were grouped in the same cluster, and were distinguished from *Anabaena* 7120 belonging to the order *Nostocales* (Fig. 4).

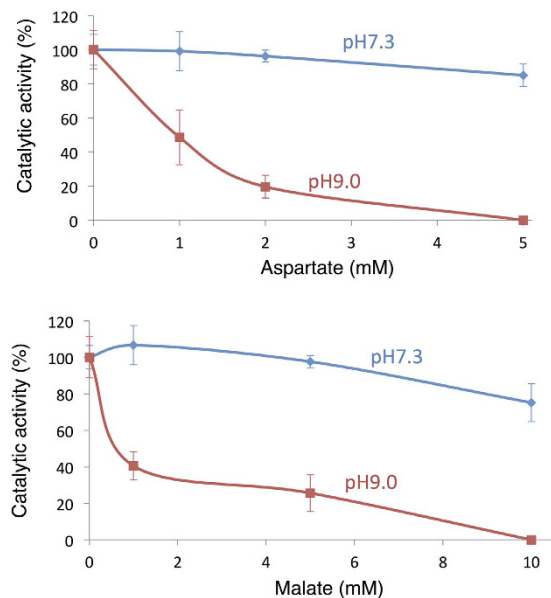


**Figure 2.** The  $V_{max}$  and  $K_m$  values for phosphoenolpyruvate (PEP) in the presence of various compounds. (A) Saturation curves of the activity of purified SyPEPC. The graph shows the means of three independent experiments. The  $V_{max}$  and  $K_m$  values for PEP of GST-tagged SyPEPC proteins are shown in (B) and (C), respectively. (B) Mean  $\pm$  SD  $V_{max}$  (units/pmol protein) values in the presence of various compounds, obtained from three independent experiments. (C) Mean  $\pm$  SD  $K_m$  values for PEP, obtained from three independent experiments. Mock indicates the enzymatic activity in the absence of additional compounds. One unit of PEPC activity was defined as the consumption of 1  $\mu$ mol NADPH per minute.

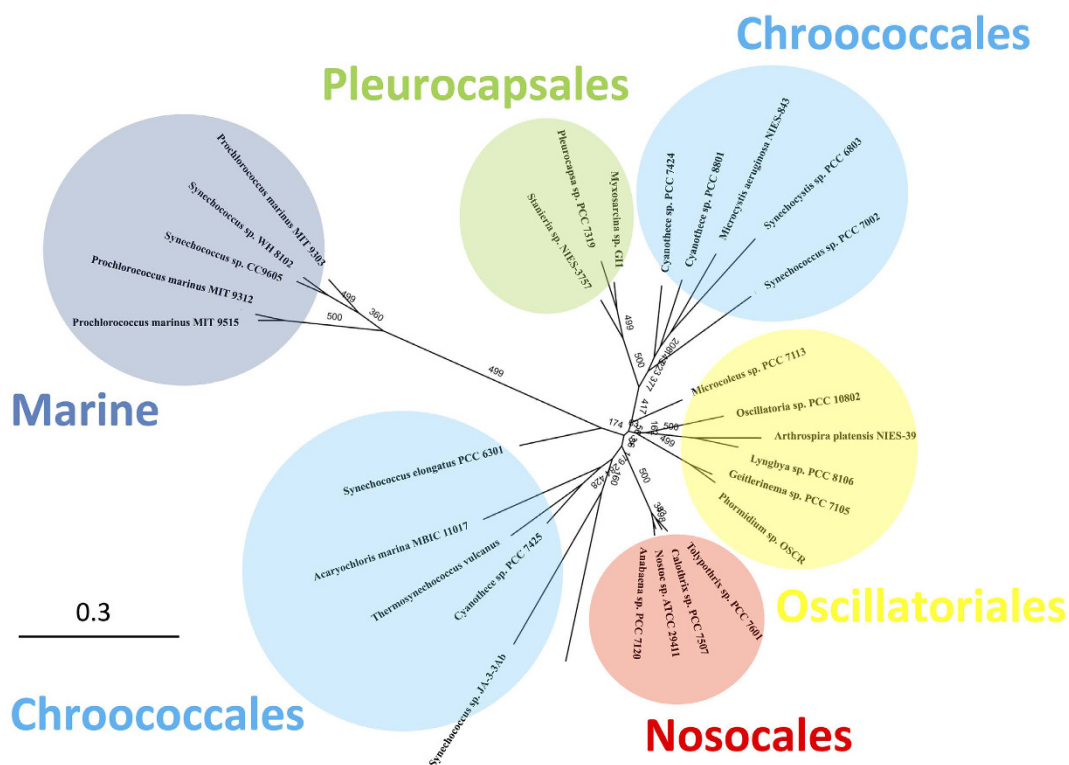
Compounds	SyPEPC activity ( <i>in vitro</i> )
Mock	100 $\pm$ 5.2
GTP	101 $\pm$ 0.6
Acetyl-CoA	111 $\pm$ 14.0
Fructose-1,6-bisphosphate	96.9 $\pm$ 4.1
Aspartate	85.2 $\pm$ 10.7
Citrate	86.1 $\pm$ 6.7
Malate	77.1 $\pm$ 6.3
Fumarate	75.0 $\pm$ 9.7
Succinate	124 $\pm$ 12.3

**Table 1.** Effect of various metabolites on SyPEPC activity. Enzyme activities were measured at pH 7.3 and 30 °C in the presence of 0.5 mM PEP. The concentration of each metabolite was 1 mM, except for GTP (5 mM), acetyl-CoA (0.4 mM), and fructose-1,6-bisphosphate (2 mM). Mock indicates the enzymatic activity in the absence of additional compounds. Data represent means  $\pm$  SD from three independent assays. Mock was set at 100%.

A previous biochemical analysis showed that *Anabaena* 7120 PEPC (hereafter AnPEPC) is sensitive to aspartate and malate<sup>12</sup>, but SyPEPC was less sensitive to these metabolites (Table 1). To reveal the cause of the difference among these cyanobacterial PEPCs, a multiple sequence alignment was performed with the software CLC sequence viewer 7.0 (Fig. 5). The carboxyl-terminal region, called region 5, is important for inhibitor binding in higher plants<sup>7,18</sup>, and five conserved amino acid residues are important for aspartate inhibition<sup>11</sup> (Fig. 5). These amino acid residues were also conserved in cyanobacterial PEPCs (Fig. 5). Therefore, at least one other amino acid residue is responsible for the difference between cyanobacterial and higher plant PEPCs. We first looked for amino acid residues unique to SyPEPC and found 28 (Fig. 5). Among them, we searched for amino acid



**Figure 3.** SyPEPC activity at pH 7.3 and pH 9.0 in the presence of aspartate (top) or malate (bottom). The graphs show means  $\pm$  SD obtained from three independent experiments. The activity of SyPEPC in the absence of aspartate or malate was set at 100%.



**Figure 4.** Phylogenetic analysis of the PEPCs from cyanobacteria, *Flaveria*, *Zea mays*, and *E. coli*. Protein sequences and accession numbers were obtained from GenBank. The protein sequences were aligned by the software CLC Sequence Viewer, and a maximum-likelihood tree based on 780 conserved amino acids was constructed using PHYML online (<http://www.atgc-montpellier.fr/phyml/>). The bootstrap values were obtained from 500 replications.

residues that were highly conserved in the order *Nostocales* (*Nostoc/Anabaena*) but different from those in either *Oscillatoriales* or *Chroococcales* (including *Synechococcus* and *Synechocystis*). Consequently, we found two candidates—the amino acids at positions 954 and 967 in SyPEPC, which were glutamate and serine, respectively (Fig. 5).



Table with 10 columns: Species/Strain, Protein ID, Amino acid sequence, Conserved region (PEP/aspartate binding), and Reference. Species listed include *Anabaena variabilis*, *Anabaena* sp., *Nostoc* sp., *Nostoc piscinale*, *Anabaena cylindrica*, *Phormidium* sp., *Phormidium willeyi*, *Ocellularia acuminata*, *Synechococcus elongatus*, *Thermosynechococcus vulcanus*, *Myxococcina* sp., *Synechocystis* sp., *Flavobacterium* sp., *Zea mays*, and *Escherichia coli*.

PEP/aspartate binding Region 5 Aspartate binding S/A aa774

Table with 10 columns: Species/Strain, Protein ID, Amino acid sequence, Conserved region (Aspartate binding), and Reference. Species listed include *Anabaena variabilis*, *Anabaena* sp., *Nostoc* sp., *Nostoc piscinale*, *Anabaena cylindrica*, *Phormidium* sp., *Phormidium willeyi*, *Ocellularia acuminata*, *Synechococcus elongatus*, *Thermosynechococcus vulcanus*, *Myxococcina* sp., *Synechocystis* sp., *Flavobacterium* sp., *Zea mays*, and *Escherichia coli*.

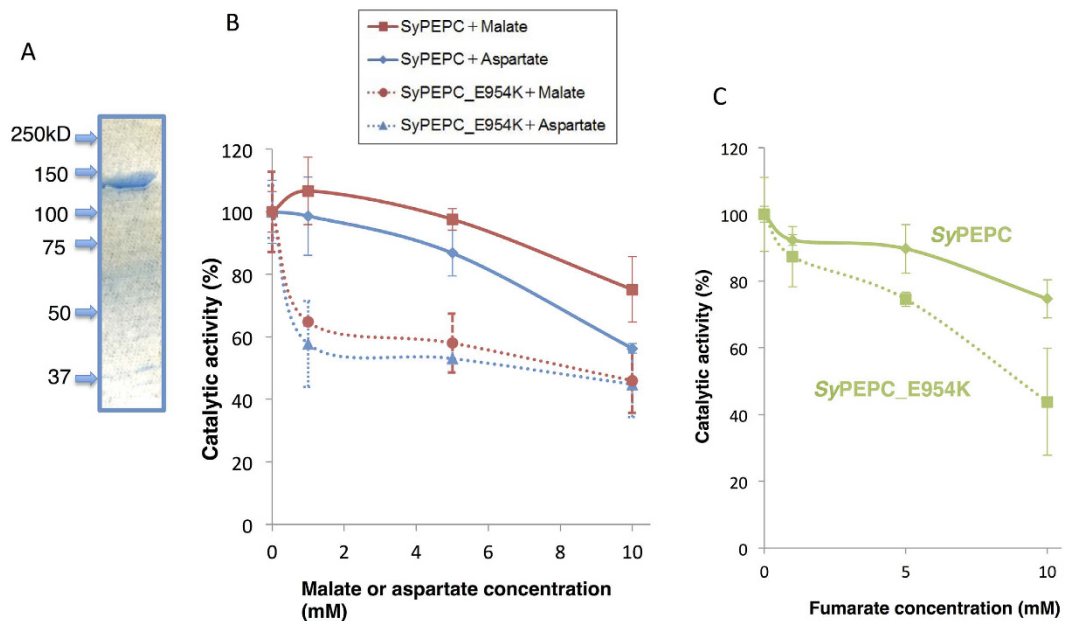
**Figure 5. Multiple protein sequence alignment of phosphoenolpyruvate carboxylase. Only the alignment of region 5 (carboxyl terminal region involved in allosteric regulation of PEPs) is shown in this figure. The multiple sequence alignment was performed using CLC Sequence Viewer.**

Because the PEPs in the order *Nostocales* contained lysine at position 954 and valine at position 967, we substituted the glutamate residue at position 954 in SyPEPC with lysine (the protein was named SyPEPC\_E954K) and the serine residue at position 967 with valine (SyPEPC\_S967V). Biochemical analysis revealed that SyPEPC\_S967V had no enzymatic activity, but purified SyPEPC\_E954K (Fig. 6A) had enzymatic activity. SyPEPC\_E954K activity was reduced to 60% in the presence of 1 mM aspartate or malate (Fig. 6B), although neither 1 mM aspartate nor malate markedly decreased SyPEPC activity (Fig. 6B). The addition of 5 mM aspartate or malate showed similar results to 1 mM on SyPEPC and SyPEPC\_E954K (Fig. 6B). The  $V_{max}$  value of SyPEPC\_E954K was increased to 2.2 units/mg. The  $K_m$  value of SyPEPC\_E954K for PEP (0.82 mM) was more than double that of SyPEPC, but the  $K_m$  value for  $HCO_3^-$  (0.76 mM) was not altered. The inhibitory effect of fumarate was also enhanced in SyPEPC\_E954K compared with SyPEPC (Fig. 6C).

**A conserved lysine residue in *Anabaena* 7120 PEP is important for allosteric regulation.** The importance of the amino acid residue at position 954 in SyPEPC was then examined in another cyanobacterium, *Anabaena* 7120. The lysine residue at position 946 in AnPEPC is equivalent to the glutamate residue at position 954 in SyPEPC. We substituted lysine 946 of AnPEPC with glutamate, and named the protein AnPEPC\_K946E. Both GST-tagged AnPEPC and AnPEPC\_K946E were similarly purified by affinity chromatography (Fig. 7A). The optimum pH and temperature of AnPEPC were 8.0 and 35 °C (Fig. 7B). The activity of AnPEPC in the absence or presence of either malate or aspartate was determined at various PEP concentrations (Fig. S2). A biochemical assay demonstrated that AnPEPC\_K946E was less inhibited by malate (the activity decreased to 80% in the presence of 1 mM malate) than AnPEPC, the activity of which decreased to less than 30% in the same conditions (Fig. 7C). Additionally, 5 mM malate had a similar effect to 1 mM malate on both AnPEPC and AnPEPC\_K946E (Fig. 7C). The inhibitory effect of aspartate on AnPEPC was not altered by this amino acid substitution (Fig. 7D). The  $V_{max}$  values of AnPEPC and AnPEPC\_K946E were 2.6 and 3.6 units/mg, respectively. The  $K_m$  values of AnPEPC and AnPEPC\_K946E for PEP were 1.1 and 0.8 mM, respectively. The  $K_m$  values of AnPEPC and AnPEPC\_K946E for  $HCO_3^-$  were 0.24 and 0.25 mM, respectively.

**Discussion**

In this study, we demonstrated the biochemical properties of SyPEPC, which are unique among cyanobacterial PEPs. Other groups showed that the optimum pH and temperature of the PEPs in *Thermosynechococcus vulcanus* and *Coccochloris peniocystis* are pH 9.0 and 42 °C, and pH 8.0 and 40 °C, respectively<sup>14,15</sup>. The optimum pH of cyanobacterial PEPs is thus 7.0–9.0; SyPEPC is relatively active at acidic pH and low temperature (Fig. 1B and C). The optimum pH of C4-type PEPs from *Sorghum*, *Digitaria sanguinalis*, and *Zea mays* is 7.0–8.0<sup>15,19,20</sup>, and therefore the optimum pH of SyPEPC is similar to C4-type plants (Fig. 1B). *In silico* analysis provided the

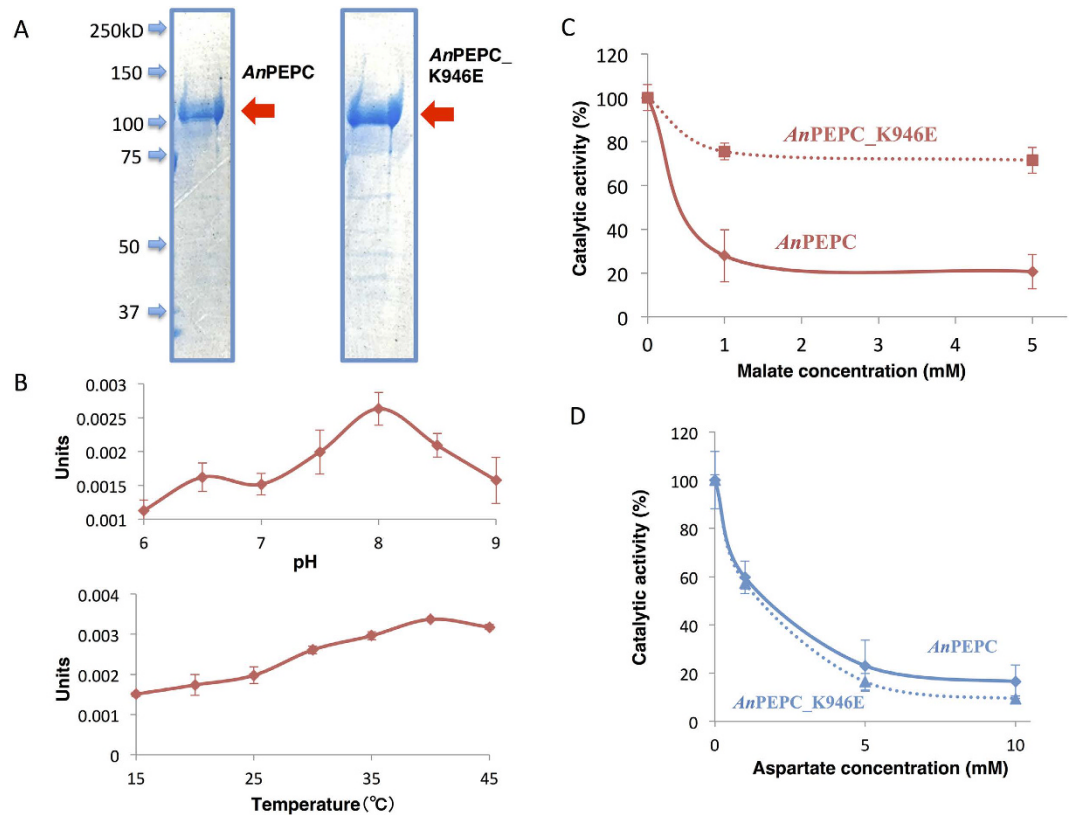


**Figure 6. Biochemical analysis of SyPEPC with a single substituted amino acid residue.** SyPEPC\_E954K is SyPEPC with the glutamate at position 954 substituted with lysine. (A) Purification of GST-tagged SyPEPC\_E954K. Proteins were electrophoresed on an 8% SDS-PAGE gel, and stained with Instant Blue reagent. Arrowheads indicate the molecular weight. (B) Effect of malate on SyPEPC\_E954K activity. Data represent means  $\pm$  SD of relative activity from three independent experiments. SyPEPC activity in the absence of malate was set at 100%. (C) Effect of fumarate on SyPEPC\_E954K activity. The data represent means  $\pm$  SD of relative activity from three independent experiments. The SyPEPC activity in the absence of fumarate was set at 100%.

aliphatic index (Ai), which was calculated from the ratio of alanine, valine, isoleucine, and leucine in the primary amino acid sequence<sup>21</sup>. High Ai values suggest proteins are highly stable over a large range of temperatures. The Ai values of the PEPCs in *Nostocales* are higher than in *Chroococcales*<sup>21</sup>, and the *in silico* prediction is consistent with our results; AnPEPC is more active at high temperature than SyPEPC (Figs 1B and 7B). The combination of *in silico* and biochemical analyses thus drives the development of PEPC studies in cyanobacteria, as also shown in the multiple alignment and phylogenetic tree (Figs 4 and 5).

The  $K_m$  value of SyPEPC for PEP was 0.34 mM (Fig. 2), which is close to the  $K_m$  value of PEPCs of *Thermosynechococcus vulcanus* (0.58 mM)<sup>15</sup>. The  $K_m$  value of AnPEPC for PEP (1.1 mM) was higher than those of unicellular cyanobacteria, demonstrating the apparent distinction of PEPC kinetics between the orders *Chroococcales* and *Nostocales*. The  $K_m$  values for PEP of the PEPCs in *Oryza sativa* and *Flaveria pringlei* (C3-plants) are 0.03–0.56 mM and those of PEPCs in *Flaveria trinervia* and *Zea mays* (C4-plants) are 0.28–1.5 mM<sup>22–24</sup>. The  $K_m$  value for PEP of SyPEPC is thus in between C3- and C4-plants. In the case of PEPCs of *Flaveria* species, the increased PEP saturation kinetics depends on a serine residue at position 774<sup>22</sup>. Our data revealed that the amino acid at positions 954 in SyPEPC and 946 in AnPEPC affect the  $K_m$  values for PEP, but not for bicarbonate. These results indicate the residue important for the binding of PEP to PEPC is different from that in higher plants. The  $K_m$  value for bicarbonate of SyPEPC (0.8 mM) was higher than those of PEPCs in both C3- and C4-plants (between 0.06 and 0.33 mM)<sup>23</sup>. These results may indicate the necessity for a carbon concentration mechanism in cyanobacteria to support carbon fixation by encapsulation of Rubis CO<sub>2</sub>. Phylogenetic analyses revealed that the kinetic changes of *Flaveria* PEPCs occurred during the last steps of the evolutionary process<sup>7</sup>, and the variation among cyanobacterial PEPCs may also have appeared during recent evolution.

We found that SyPEPC was less inhibited by metabolic effectors, and that a single amino acid substitution at position 954 affected the allosteric regulation by malate or aspartate (Fig. 6B). The inhibitory effect of the metabolites on SyPEPC was higher at pH 9.0 than at pH 7.3 (Fig. 3), while the optimal enzymatic activity was at pH 7.3 (Fig. 1C). In *Coccochloris peniocystis*, PEPC activity is higher at pH 8.0 than at pH 7.0, while the inhibitory effect of aspartate or malate is greater at pH 7.0 than at pH 8.0<sup>14</sup>. Thus, the optimal pHs for enzymatic activities and inhibitory effects by metabolites are not correlated in cyanobacteria. The importance of the amino acid substitution between glutamate and lysine was conserved in another cyanobacterium, *Anabaena* 7120 (Fig. 7C). Among *Flaveria* species, *F. pringlei* performs C3-type photosynthesis and *F. trinervia* performs C4-type photosynthesis<sup>9,25,26</sup>. The C3-type PEPCs in *Flaveria* containing an arginine residue at position 884 are inhibited by malate, while the C4-type PEPCs containing a glycine residue at position 884 are tolerant to malate<sup>18</sup>. Our multiple sequence alignment analysis revealed the amino acid residue at position 954 in SyPEPC is not equivalent to the residue at position 884 in *Flaveria* PEPCs (Fig. 5). The lysine residue at position 946 in *Anabaena* is highly conserved among nitrogen-fixing cyanobacteria (Fig. 5), and the positive charge of lysine may play critical role in malate binding. The inhibitory effect of aspartate was not affected by substitution of the lysine residue at position 946 in AnPEPC (Fig. 7D). At least five amino acid residues play roles in the binding of aspartate to PEPC



**Figure 7. Biochemical analysis of *Anabaena* 7120 PEPCs (*AnPEPC*).** (A) Purification of GST-tagged *AnPEPC* and *AnPEPC\_K946E* (the lysine residue was substituted with glutamate). Proteins were electrophoresed on an 8% SDS-PAGE gel, and stained with Instant Blue reagent. Arrowheads indicate the molecular weight. (B) Effect of temperature and pH on *AnPEPC* activity. Data represent relative values of means  $\pm$  SD from three independent experiments. Sixteen pmol (0.6  $\mu$ g) of *SyPEPC* was used for the enzyme assay. One unit of PEPC activity was defined as the consumption of 1  $\mu$ mol NADPH per minute. (C) Effect of malate on *AnPEPC\_K946E* activity. Data represent means  $\pm$  SD of relative activity from three independent experiments. *AnPEPC* activity in the absence of malate was set at 100%. (D) Effect of aspartate on *AnPEPC\_K946E* activity. The data represent means  $\pm$  SD of relative activity from three independent experiments. The *AnPEPC* activity in the absence of aspartate was set at 100%.

proteins<sup>15</sup> (Fig. 5); therefore, other amino acids compensate for the absence of the lysine residue at position 946 in *AnPEPC* during aspartate binding. Thus, we discovered changes in allosteric regulation by a single amino acid substitution are conserved in both cyanobacteria and higher plants, although the key residues differ. In this study, we focused on region 5 of cyanobacterial PEPCs and showed the importance of this region in allosteric regulation. The structure of cyanobacterial PEPCs remains to be determined and future biochemical studies will elucidate the detailed mechanism of allosteric inhibition in cyanobacterial PEPCs.

## Methods

**Construction of cloning vectors for recombinant protein expression.** The region of the *Synechocystis* 6803 genome containing the *ppc* (*sll0920*, encoding *SyPEPC*) ORF was amplified by PCR using KOD plus neo polymerase and the primers 5'-GAAGGTCGTGGGATCATGAACCTGGCAGTTCCTG-3' and 5'-GATGCGGCCGCTCGAGTCAACCAGTATTACGCATTC-3'. The amplified DNA fragments were cloned into the *Bam*HI-*Xho*I site of pGEX5X-1 (GE Healthcare Japan, Tokyo, Japan) using an In-Fusion HD cloning kit (Takara Bio, Shiga, Japan). Site-directed mutagenesis was commercially performed by Takara Bio. For *SyPEPC\_E954K* and *SyPEPC\_S967V*, +2860–2862 and +2899–2901 from the start codon were changed from GAA to AAA and from TCT to GTG, respectively.

The region of the *Anabaena* 7120 genome containing the *ppc* (all4861, encoding *AnPEPC*) ORF was artificially synthesized and cloned into the *Bam*HI-*Xho*I site of pGEX5X-1 by Takara Bio.

**Affinity purification of recombinant proteins.** The expression vectors were transformed into *E. coli* BL21(DE3) (Takara Bio). Several liters of *E. coli* containing the vectors were cultivated at 30 °C by shaking (150 rpm), and protein expression was induced overnight by adding 0.01 mM isopropyl  $\beta$ -D-1-thiogalactopyranoside (Wako Chemicals, Osaka, Japan).

Affinity chromatography for protein purification was performed as described previously<sup>27</sup>. Briefly, *E. coli* cells from 2 L culture were disrupted by sonication VC-750 (EYELA, Tokyo, Japan) for 5 min with 30% intensity, and



centrifuged at  $5,800 \times g$  for 2 min at 4 °C. The supernatant was transferred to a new 50-mL plastic tube, and 560  $\mu$ L of glutathione-Sepharose 4B resin (GE Healthcare Japan, Tokyo, Japan) was added. After rotating for 30 min, the resin was washed with 500  $\mu$ L of PBS-T (1.37 M NaCl, 27 mM KCl, 81 mM  $\text{Na}_2\text{HPO}_4 \cdot 12\text{H}_2\text{O}$ , 14.7 mM  $\text{KH}_2\text{PO}_4$ , 0.05% Tween-20) with 1 mM ATP, and eluted three times with 500  $\mu$ L of GST elution buffer (50 mM Tris-HCl, pH 8.0, 10 mM reduced glutathione). The protein concentration was measured with a PIERCE BCA Protein Assay Kit (Thermo Scientific, Rockford, IL). Protein purification was confirmed by SDS-PAGE with staining with InstantBlue (Expedion Protein Solutions, San Diego, CA).

**Enzyme assay.** For the assay of the purified proteins, 4 pmol of SyPEPCs or 16 pmol of AnPEPCs were mixed in a 1 mL assay solution (100 mM MOPS-Tris, 10 mM  $\text{MgCl}_2$ , 1 mM EDTA, 50 mM  $\text{NaHCO}_3$ , 0.2 mM nicotinamide adenine dinucleotide hydride (NADH), 2.5 mM PEP, 10 U of malate dehydrogenase (Oriental Yeast, Tokyo, Japan)). For the cell extract assay, 150  $\mu$ g of total proteins was added to 1 mL assay solution. The absorbance at  $A_{340}$  was measured using a Hitachi U-3310 spectrophotometer (Hitachi High-Tech., Tokyo, Japan). One unit of PEPC activity was defined as the consumption of 1  $\mu$ mol NADPH per minute.  $V_{max}$  and  $K_m$  values were determined by a Lineweaver-Burk double reciprocal plot. The results were plotted as a graph of the rate of reaction against the concentration of substrate. The Y and X intercepts were  $1/V_{max}$  and  $-1/K_m$ , respectively.

**Bacterial strains.** The glucose-tolerant (GT) strain of *Synechocystis* sp. PCC 6803, isolated by Williams<sup>28</sup>, and *Nostoc* sp. PCC 3756 from the National Institute of Environmental Science (Tsukuba, Japan) were grown in modified BG-11 medium, consisting of BG-11<sub>0</sub> liquid medium<sup>20</sup> supplemented with 5 mM  $\text{NH}_4\text{Cl}$  (buffered with 20 mM HEPES-KOH, pH 7.8). The liquid cultures were bubbled with air containing 1% (v/v)  $\text{CO}_2$  (flow rate was 20–50 mL/min) and incubated at 30 °C under continuous white light ( $\sim 50\text{--}70 \mu\text{mol photons m}^{-2} \text{ s}^{-1}$ ). For enzymatic assay, the cells were suspended in 1 mL of assay solution with one-tenth of a tablet of Complete mini protease inhibitor (Roche, Basel, Switzerland), followed by disruption with a VC-750 sonicator (EYELA) for 3 min with 30% intensity. The cell extracts were centrifuged at  $5,800 \times g$  for 2 min at 4 °C, and the supernatant was used for PEPC activity assay.

**Statistical analysis.** *P*-values were determined using paired two-tailed Student's *t*-tests with Microsoft Excel for Mac 2011 (Redmond, WA, USA). All results were obtained using biologically independent replicates.

## References

- Andersson, I. & Backlund, A. Structure and function of RuBisCO. *Plant Physiol. Biochem.* **46**, 275–291 (2008).
- Rae, B. D., Long, B. M., Badger, M. R. & Price, G. D. Functions, compositions, and evolution of the two types of carboxysomes: polyhedral microcompartments that facilitate  $\text{CO}_2$  fixation in cyanobacteria and some proteobacteria. *Microbiol. Mol. Biol. Rev.* **77**, 357–379 (2013).
- Yang, C., Hua, Q. & Shimizu, K. Metabolic flux analysis in *Synechocystis* using isotope distribution from  $^{13}\text{C}$ -labeled glucose. *Metab. Eng.* **4**, 202–216 (2002).
- O'Leary, B., Park, J. & Plaxton, W. C. The remarkable diversity of plant PEPC (phosphoenolpyruvate carboxylase): recent insights into the physiological functions and post-translational controls of non-photosynthetic PEPC. *Biochem. J.* **436**, 15–34 (2011).
- Izui, K., Matsumura, H., Furumoto, T. & Kai, Y. Phosphoenolpyruvate carboxylase: a new era of structural biology. *Ann. Rev. Plant Biol.* **55**, 69–84 (2004).
- Chollet, R., Vidal, J. & O'Leary, M. H. PHOSPHOENOLPYRUVATE CARBOXYLASE: A ubiquitous, highly regulated enzyme in plants. *Annu Rev Plant Physiol. Plant Mol. Biol.* **47**, 273–298 (1996).
- Svensson, P., Bläsing, O. E. & Westhoff, P. Evolution of C4 phosphoenolpyruvate carboxylase. *Arch. Biochem. Biophys.* **414**, 180–188 (2003).
- Ting, I. P. & Osmond, C. B. Multiple forms of plant phosphoenolpyruvate carboxylase associated with different metabolic pathways. *Plant Physiol.* **51**, 448–453 (1973).
- Monson, R. K., Moore, B. D., Ku, M. S. & Edwards, G. E. Co-function of C3- and C4-photosynthetic pathways in C3, C4 and C3-C4 intermediate *Flaveria* species. *Planta* **168**, 493–502 (1986).
- Takahashi-Terada, A. *et al.* Maize phosphoenolpyruvate carboxylase. Mutations at the putative binding site for glucose 6-phosphate caused desensitization and abolished responsiveness to regulatory phosphorylation. *J. Biol. Chem.* **280**, 11798–806 (2005).
- Kai, Y. *et al.* Three-dimensional structure of phosphoenolpyruvate carboxylase: a proposed mechanism for allosteric inhibition. *Proc. Natl. Acad. Sci. USA* **96**, 823–828 (1999).
- Shylajanaciyar, M. *et al.* Analysis and elucidation of phosphoenolpyruvate carboxylase in cyanobacteria. *Protein J.* **34**, 73–81 (2015).
- Luinenburg, I. & Coleman, J. R. Identification, characterization and sequence analysis of the gene encoding phosphoenolpyruvate carboxylase in *Anabaena* sp. PCC 7120. *J. Gen. Microbiol.* **138**, 685–691 (1992).
- Owtrim, G. W. & Colman, B. Purification and characterization of phosphoenolpyruvate carboxylase from a cyanobacterium. *J. Bacteriol.* **168**, 207–212 (1986).
- Chen, L. M., Omiya, T., Hata, S. & Izui, K. Molecular characterization of a phosphoenolpyruvate carboxylase from a thermophilic cyanobacterium, *Synechococcus vulcanus* with unusual allosteric properties. *Plant Cell Physiol.* **43**, 159–169 (2002).
- Benziman, M. Role of phosphoenolpyruvate carboxylation in *Acetobacter xylinum*. *J. Bacteriol.* **98**, 1005–1010 (1969).
- Matsumura, H. *et al.* Crystal structures of C4 form maize and quaternary complex of *E. coli* phosphoenolpyruvate carboxylases. *Structure* **10**, 1721–1730 (2002).
- Paulus, J. K., Schlieper, D. & Groth, G. Greater efficiency of photosynthetic carbon fixation due to single amino-acid substitution. *Nat. Commun.* **4**, 1518 (2013).
- Echevarria, C. *et al.* The effect of pH on the covalent and metabolic control of C4 phosphoenolpyruvate carboxylase from *Sorghum* leaf. *Arch. Biochem. Biophys.* **315**, 425–430 (1994).
- Rippka, R. Isolation and purification of cyanobacteria. *Methods Enzymol.* **167**, 3–27 (1988).
- Smith, A. A. & Plazas, M. C. *In silico* characterization and homology modeling of cyanobacterial phosphoenolpyruvate carboxylase enzymes with computational tools and bioinformatics servers. *Am. J. Biochem. Mol. Biol.* **1**, 319–336 (2011).
- Bläsing, O. E., Westhoff, P. & Svensson, P. Evolution of C4 phosphoenolpyruvate carboxylase in *Flaveria*, a conserved serine residue in the carboxyl-terminal part of the enzyme is a major determinant for C4-specific characteristics. *J. Biol. Chem.* **275**, 27917–27923 (2000).
- Muramatsu, M., Suzuki, R., Yamazaki, T. & Miyao, M. Comparison of plant-type phosphoenolpyruvate carboxylases from rice: Identification of two plant-specific regulatory regions of the allosteric enzyme. *Plant Cell Physiol.* **56**, 468–480 (2014).



24. Dong, L. Y., Masuda, T., Kawamura, T., Hata, S. & Izui, K. Cloning, expression, and characterization of a root-form phosphoenolpyruvate carboxylase from *Zea mays*: Comparison with the C<sub>4</sub>-form enzyme. *Plant Cell Physiol.* **39**, 865–873 (1998).
25. Engelmann, S., Bläsing, O. E., Gowik, U., Svensson, P. & Westhoff, P. Molecular evolution of C<sub>4</sub> phosphoenolpyruvate carboxylase in the genus *Flaveria*—a gradual increase from C<sub>3</sub> to C<sub>4</sub> characteristics. *Planta* **217**, 717–725 (2003).
26. Jacobs, B., Engelmann, S., Westhoff, P. & Gowik, U. Evolution of C<sub>4</sub> phosphoenolpyruvate carboxylase in *Flaveria*: determinants for high tolerance towards the inhibitor L-malate. *Plant Cell Environ.* **31**, 793–803 (2008).
27. Osanai, T. *et al.* ChlH, the H subunit of the Mg-chelatase, is an anti-sigma factor for SigE in *Synechocystis* sp. PCC 6803. *Proc. Natl. Acad. Sci. USA* **106**, 6860–6865 (2009).
28. Williams, J. G. K. Construction of specific mutations in photosystem II photosynthetic reaction center by genetic engineering methods in *Synechocystis* 6803. *Methods Enzymol.* **167**, 766–778 (1988).

## Acknowledgements

This work was supported by the Ministry of Education, Culture, Sports, Science, and Technology, Japan, by a grant to T.O. from ALCA (Project name “Production of cyanobacterial succinate by the genetic engineering of transcriptional regulators and circadian clocks”) from the Japan Science and Technology Agency and by JSPS KAKENHI Grant-in-Aid for Scientific Research on Innovative Areas Grant Number 16H06559.

## Author Contributions

M.T. designed research, performed experiments, analysed data, and wrote the manuscript. M.Y.H. designed research. T.O. analysed data and wrote the manuscript.

## Additional Information

**Supplementary information** accompanies this paper at <http://www.nature.com/srep>

**Competing financial interests:** The authors declare no competing financial interests.

**How to cite this article:** Takeya, M. *et al.* Allosteric Inhibition of Phosphoenolpyruvate Carboxylases is Determined by a Single Amino Acid Residue in Cyanobacteria. *Sci. Rep.* **7**, 41080; doi: 10.1038/srep41080 (2017).

**Publisher's note:** Springer Nature remains neutral with regard to jurisdictional claims in published maps and institutional affiliations.



This work is licensed under a Creative Commons Attribution 4.0 International License. The images or other third party material in this article are included in the article's Creative Commons license, unless indicated otherwise in the credit line; if the material is not included under the Creative Commons license, users will need to obtain permission from the license holder to reproduce the material. To view a copy of this license, visit <http://creativecommons.org/licenses/by/4.0/>

© The Author(s) 2017