

SCIENTIFIC REPORTS



OPEN

Characterization of a model of systemic inflammation in humans *in vivo* elicited by continuous infusion of endotoxin

Received: 04 August 2016
Accepted: 01 December 2016
Published: 05 January 2017

D. Kiers^{1,2,*}, R. M. Koch^{1,2,*}, L. Hamers^{1,2}, J. Gerretsen^{1,2}, E. J. M. Thijs¹, L. van Ede¹, N. P. Riksen³, M. Kox^{1,2} & P. Pickkers^{1,2}

Investigating the systemic inflammatory response in patients with critical illness such as sepsis, trauma and burns is complicated due to uncertainties about the onset, duration and severity of the insult. Therefore, *in vivo* models of inflammation are essential to study the pathophysiology and to evaluate immunomodulatory therapies. Intravenous bolus administration of endotoxin to healthy volunteers is a well-established model of a short-lived systemic inflammatory response, characterized by increased plasma cytokine levels, flu-like symptoms and fever. In contrast, patients suffering from systemic inflammation are often exposed to inflammatory stimuli for an extended period of time. Therefore, continuous infusion of endotoxin may better reflect the kinetics of the inflammatory response encountered in these patients. Herein, we characterize a novel model of systemic inflammation elicited by a bolus infusion of 1 ng/kg, followed by a 3hr continuous infusion of 1 ng/kg/h of endotoxin in healthy volunteers, and compared it with models of bolus administrations of 1 and 2 ng/kg of endotoxin. The novel model was well-tolerated and resulted in a more pronounced increase in plasma cytokine levels with different kinetics and more prolonged symptoms and fever compared with the bolus-only models. Therefore, the continuous endotoxin infusion model provides novel insights into kinetics of the inflammatory response during continuous inflammatory stimuli and accommodates a larger time window to evaluate immunomodulating therapies.

Systemic inflammation is a common hallmark of patients with sepsis¹, trauma², burns³, as well as those undergoing major surgery⁴. This inflammatory response follows the activation of specific receptors by pathogen-, or danger associated molecular patterns (PAMPs and DAMPs), and is characterized by the production of cytokines and chemokines. In turn, these cytokines and chemokines trigger complement activation and coagulation, leukocyte migration, and increased vascular permeability⁵. A dysregulated immune response can have detrimental effects, such as hemodynamic instability, organ dysfunction, and prolonged immune suppression⁶.

A comprehensive appreciation of the innate immune response is crucial to understand the pathogenesis of systemic inflammation observed in patients. However, investigating the innate immune response in patients is hampered by heterogeneity, uncertainties about the moment of onset and, in the case of sepsis, the accuracy of the diagnosis⁶. In order to overcome these impediments, models of systemic inflammation may facilitate investigations into the pathophysiological mechanisms and evaluate the effects of immunomodulatory interventions. As *in vitro* and animal models have obvious drawbacks concerning extrapolation to humans⁷, investigating systemic inflammation and immunomodulation is of great importance⁸.

A controlled, transient and reproducible systemic inflammatory response in humans can be achieved with an intravenous (i.v.) bolus administration of endotoxin (lipopolysaccharide (LPS)), a compound derived from the cell membrane of Gram-negative bacteria. This inflammation is characterized by flu-like symptoms,

¹Radboud university medical center, 6500 HB, Radboud Institute for Molecular Life Sciences, Department of Intensive Care Medicine, 6500 HB, Nijmegen, The Netherlands. ²Radboud university medical center, 6500 HB, Radboud Institute for Molecular Life Sciences, Department of Pediatrics, 6500 HB, Nijmegen, The Netherlands.

³Radboud university medical center, 6500 HB, Radboud Institute for Molecular Life Sciences, Department of Internal Medicine, 6500 HB, Nijmegen, The Netherlands. *These authors contributed equally to this work. Correspondence and requests for materials should be addressed to P.P. (email: peter.pickkers@radboudumc.nl)

	placebo n = 15	bolus 1 ng/kg n = 10	bolus 2 ng/kg n = 15	bolus 1 ng/kg + continuous 3 ng/kg n = 10	p-value
Age [yrs]	21.5 ± 0.5	21.1 ± 0.9	21.7 ± 0.7	23.6 ± 1.6	0.30
Height [cm]	181 ± 2	185 ± 2	185 ± 2	182 ± 2	0.40
Weight [kg]	77 ± 3	78 ± 3	78 ± 3	77 ± 4	0.98
BMI [kg/m ²]	23.4 ± 0.9	22.8 ± 0.7	23.0 ± 0.8	23.2 ± 0.7	0.96

Table 1. Demographic characteristics of subjects. Data were obtained during screening visit and are presented as mean ± SEM. P-values were calculated using one-way ANOVAs. yrs: years, cm: centimeter, kg: kilogram, BMI: body mass index, m: meter.

fever, hemodynamic alterations and increased plasma levels of cytokines⁹. Previous studies have shown a dose-dependent effect of endotoxin on the magnitude of the inflammatory response, but largely unaltered kinetics with increasing endotoxin dosages^{10–12}. Furthermore, repeated endotoxin administration studies have demonstrated the development of endotoxin tolerance, representing an immune suppressed state that resembles sepsis-induced immunoparalysis¹³. This experimental human endotoxemia model has been frequently used to investigate the pathophysiology of systemic inflammation, to assess a broad range of immunosuppressive and immunostimulatory drugs and non-pharmacological interventions^{14–17}, and to evaluate the effects of inflammation on other biologic processes, such as iron homeostasis¹⁸.

Patients suffering from systemic inflammation are in most cases exposed to inflammatory stimuli for extended periods of time¹⁹. Therefore, a bolus administration of endotoxin likely poorly reflects the kinetics of the inflammatory response observed in these patients^{9,19}, and a continuous infusion of endotoxin may provide a more accurate representation. Furthermore, as the endotoxin-induced inflammatory response is rapidly orchestrated and waned after bolus administration, investigational treatments are typically initiated before endotoxin administration. Although this approach increases the likelihood to show efficacy of the intervention in the experimental model, it does not reflect the clinical situation in which treatment is initiated after systemic inflammation has presented. An inflammatory model that develops over several hours may provide a larger time window to evaluate interventions once inflammation has developed.

Taken together, the pathophysiology of systemic inflammation and immunomodulatory treatments are difficult to study in patients. The human endotoxemia model that is currently used is characterized by a rapid and short-lived systemic inflammatory response after a bolus administration of endotoxin. A continuous infusion of endotoxin may provide more insight into the kinetics of the inflammatory response in patients with ongoing inflammation.

Herein, we characterize a novel model of systemic inflammation elicited by continuous endotoxin infusion (an initial endotoxin bolus of 1 ng/kg followed by 1 ng/kg/h for 3 hours). Additionally, we provide a context to interpret the characteristics of the continuous infusion model by describing the characteristics of endotoxin models using 1 or 2 ng/kg bolus administrations and responses to placebo administration. We report the kinetics of plasma cytokines, hemodynamic alterations, symptoms and leukocyte changes, and explore the coherence between different cytokines and their association with clinical parameters.

Results

Demographic characteristics, elicitation of systemic inflammation and safety. Eligible subjects were healthy, non-smoking male subjects, aged 18–35 years. Demographic characteristics of the subjects are listed in Table 1. All subjects were Caucasian. There were no differences in baseline characteristics between the groups. All subjects received a venous and arterial cannula to accommodate infusion of fluids and endotoxin and frequent blood withdrawal and continuous blood pressure monitoring. Systemic inflammation was elicited by either continuous endotoxin infusion (an initial endotoxin bolus of 1 ng/kg, followed by 1 ng/kg/h for 3 hours) or a bolus administration of 1 or 2 ng/kg bolus administrations of endotoxin. The placebo group received a comparable volume of NaCl 0.9%. No serious adverse events occurred and all subjects were well at the time of discharge, eight hours after initiation of endotoxin administration.

Plasma cytokines and chemokines. To determine serial plasma levels of cytokines Tumor Necrosis Factor (TNF)- α , interleukin (IL)-1 β , IL-6 and IL-10 (Fig. 1) and chemokines (C-X-C-motif) ligand (CXCL)8 (also known as IL-8), Monocyte Chemoattractant Protein (MCP)-1, Macrophage Inflammatory Protein (MIP)-1 α and MIP-1 β , blood was frequently sampled throughout the experiment. All plasma cytokine concentrations were below detection limits in all subjects prior to endotoxin administration and significantly increased afterwards (Fig. 2). In the placebo group, no increases in any of the cytokines and chemokines were observed.

Kinetics of plasma cytokines and chemokines. In the continuous infusion group, the kinetics of all cytokines and chemokines were markedly different compared with bolus administration of 2 ng/kg (Figs 1 and 2). Of note, in the continuous infusion group plasma levels of TNF- α and MIP-1 α already decreased before endotoxin infusion was stopped. The differences between 1 and 2 ng/kg bolus administration groups were less pronounced, and only reached statistical significance for TNF- α , IL-1 β , IL-10 and MIP-1 α .

Total cytokine and chemokines production. The total cytokine response, expressed as the area under the time-concentration curve (AUC), was higher for IL-1 β , IL-6, IL-10, MCP-1 and MIP-1 α in the continuous

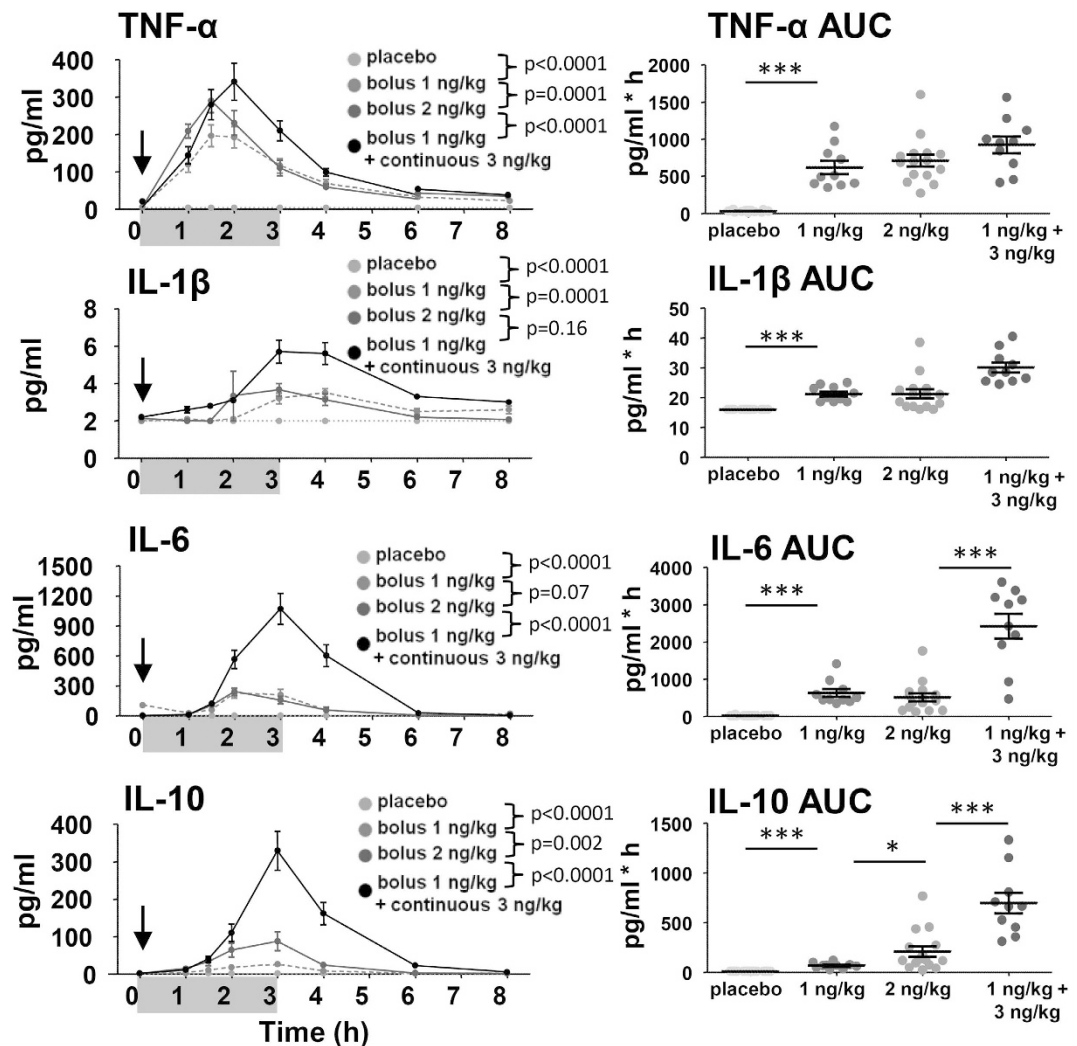


Figure 1. Kinetics and total production of cytokines. In the left panels, plasma concentrations of Tumor Necrosis Factor (TNF)- α , Interleukin(IL)-1 β , IL-6 and IL-10 over time are depicted. The arrow represents the time of bolus endotoxin administration, the grey bar represents the period of endotoxin infusion in the continuous endotoxin group. Data are expressed as mean \pm SEM pg/mL. Differences between groups were evaluated using 2-way ANOVAs (of time \times group), and interaction term p-values are displayed. In the right panels, dot plots of the area under the time-concentration curve (AUC) with mean \pm SEM are shown. Differences between groups were evaluated using Student's t-tests. * $p < 0.05$, ** $p < 0.01$, *** $p < 0.0001$, # $p = 0.05$ –0.10.

infusion group compared with the 2 ng/kg bolus group, but similar for TNF- α and CXCL8. There was a trend towards higher total production of MIP-1 β in the continuous infusion group. Except for higher production of IL-10 in the 2 ng/kg bolus administration group, there were no differences in total cytokine production between the 1 and 2 ng/kg bolus groups.

Clinical parameters. Endotoxin-induced flu-like symptoms (headache, nausea, shivering, muscle and back pain) reported by the subjects were scored every 30 minutes at 0–5 points. These symptoms remained at baseline in placebo-treated subjects, whereas the onset of flu-like symptoms was observed one hour after initiating endotoxin administration (Fig. 3). Continuous endotoxin infusion resulted in prolonged, but equally severe, flu-like symptoms in comparison to 2 ng/kg bolus administration. Small differences in the kinetics of the symptom scores were identified between the 1 and 2 ng/kg bolus administration groups. However, the total burden of symptoms, represented by the area under the time-symptom curve, was identical in these groups. The rise in temperature was markedly more pronounced in the continuous administration group compared with the 2 ng/kg bolus group, whereas there were no differences in the temperature response between the 1 and 2 ng/kg bolus administration groups (Fig. 3). Although an endotoxin-dose-dependent increase in heart rate was observed, mean arterial pressure decreased to a similar extent in all subjects, also in those who received placebo (Fig. 3).

Hematological parameters. Endotoxemia resulted in neutrophilia, and a mono- and lymphocytopenia, with the nadir at two and four hours, respectively (Fig. 4). These hematologic changes were more pronounced in the continuous infusion group compared with bolus administration of 2 ng/kg endotoxin. Neutrophilia was

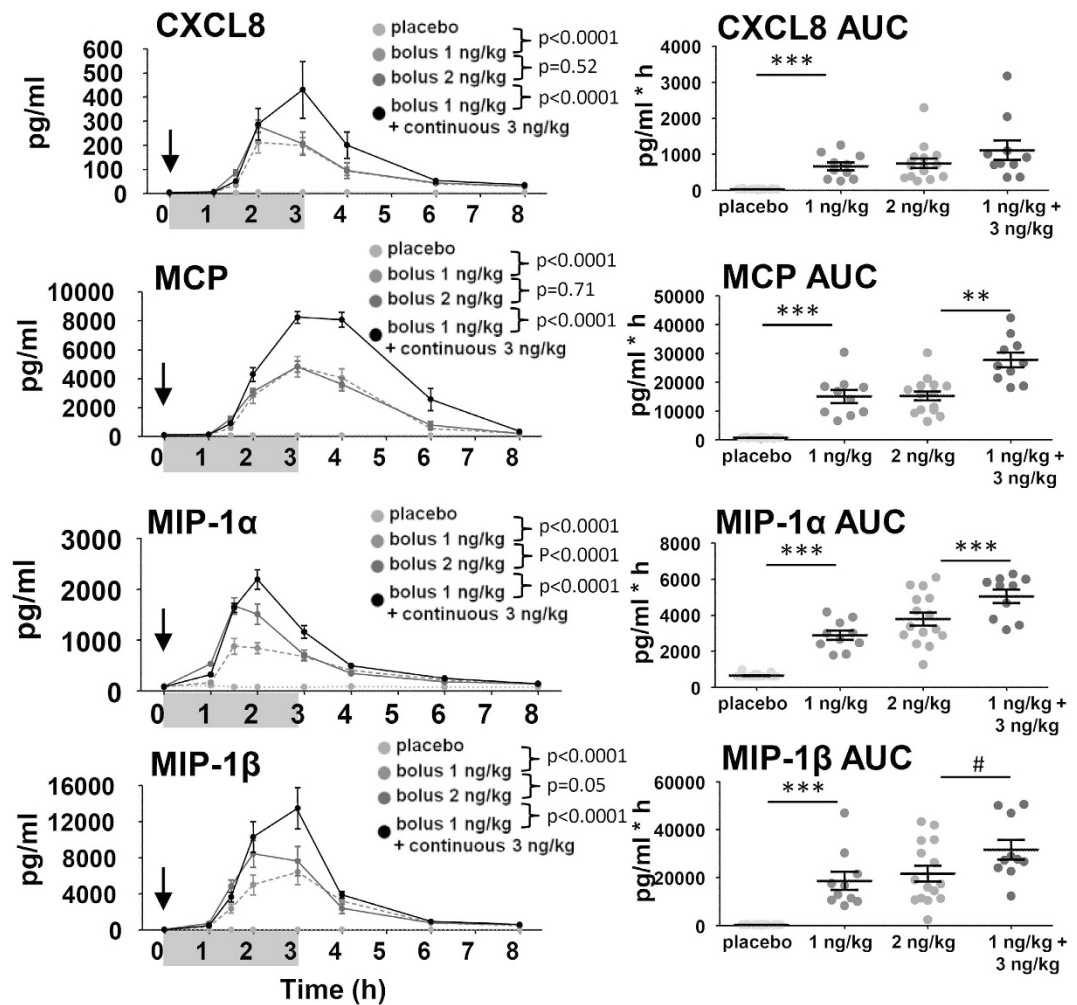


Figure 2. Kinetics and total production of chemokines. In the left panels, plasma concentration of CXC motif ligand (CXCL) 8, Monocyte Chemoattractant Protein (MCP) and Macrophage Inflammatory Protein (MIP)-1 α and 1 β over time are depicted. The arrow represents the time of bolus endotoxin administration, the grey bar represents the period of endotoxin infusion in the continuous endotoxin group. Data are expressed as mean \pm SEM pg/mL. Differences between groups were evaluated using 2-way ANOVAs (of time \times group), and interaction term p-values are displayed. In the right panels, dot plots of the area under the time-concentration curve (AUC) with mean \pm SEM are shown. Differences between groups were evaluated using with Students t-tests. * $p < 0.05$, ** $p < 0.01$, *** $p < 0.0001$.

similar after a endotoxin bolus of 1 and 2 ng/kg, while the kinetics of circulating monocyte and lymphocyte numbers differed slightly, yet significantly.

Hierarchical clustering and exploratory factor analysis. To identify relationships and similarities between cytokines and subjects, we performed hierarchical clustering analysis on cytokine responses and subjects. This analysis revealed a separate cluster for the anti-inflammatory cytokine IL-10, while three clusters were identified consisting of CXCL8, TNF- α and MCP-1, MIP-1 α and MIP-1 β , and IL-6 and IL-1 β (Fig. 5). Subjects clustered into three distinct groups; those who received continuous infusion (middle rows), those with low cytokine responses (upper rows) after bolus administration, and those with high cytokine responses (lower rows) after bolus administration. To explore to what extent cytokines responses are related, we performed exploratory factor analyses. This is an unsupervised method that can identify latent constructs (factors) in a multi-dimensional data set. The loading of a variable on a factor represents the relative weight of the variable in the factor. Exploratory factor analyses revealed similar grouping of cytokines (Table 2); with high loadings of CXCL8 and TNF- α in factor 1, a high loading of IL-10 in factor 2, a high negative loading of IL-1 β and IL-6 in factor 3, and high loadings of MIP-1 α and MIP-1 β in factor 4. These factors explain 92% of the variance in the dataset. Factor 3, which has high negative loadings of IL-1 β and IL-6, correlated with symptoms and change in temperature (Fig. 6). As such, high values of IL-1 β and IL-6 are associated with higher symptom severity and a larger increase in temperature. Change in heart rate correlated with factor 2, which has a high loading of IL-10.

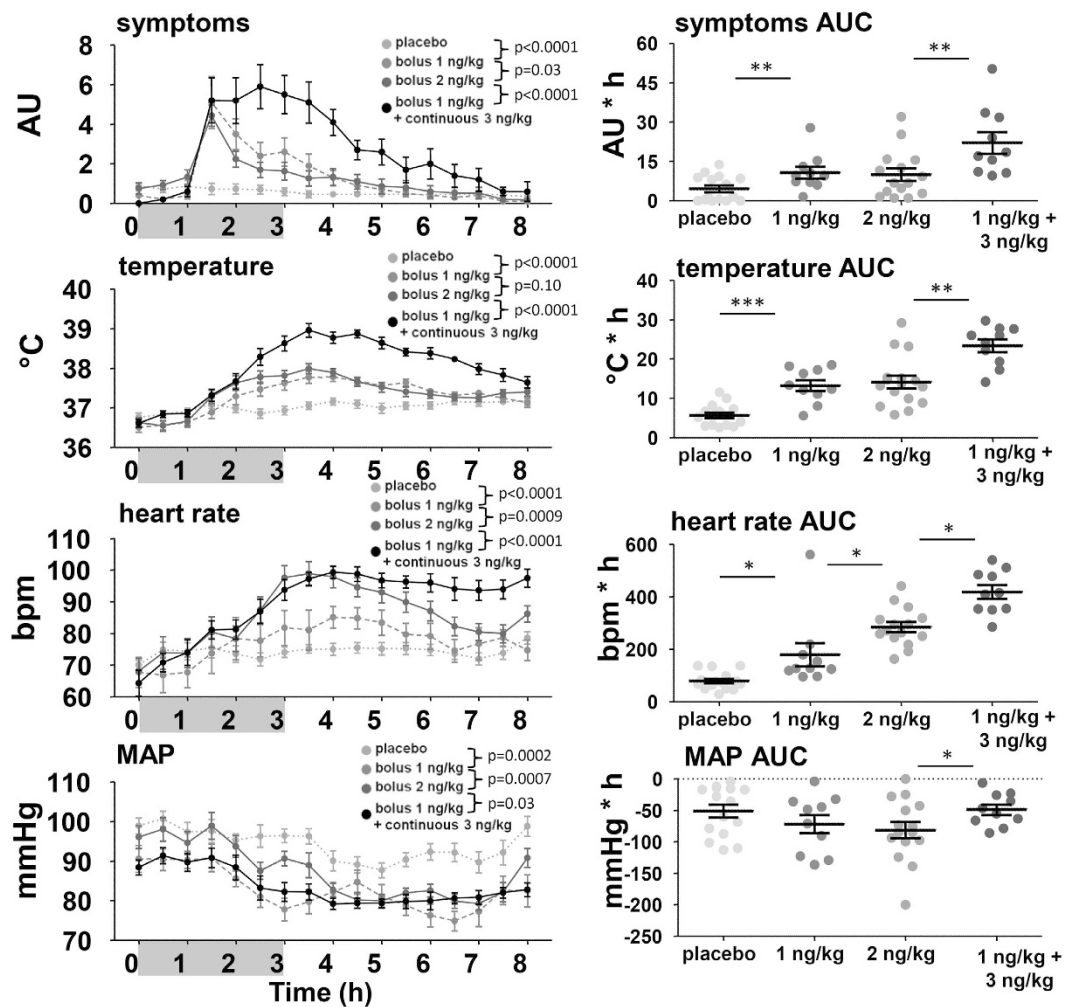


Figure 3. Kinetics and area under the curve of clinical parameters. In the left panel, change over time of symptoms (arbitrary units), temperature ($^{\circ}\text{C}$), heart rate (beats per minute (bpm)), and mean arterial pressure (MAP) (mmHg) over time are depicted. The arrow represents the time of bolus endotoxin administration, the grey bar represents the period of endotoxin infusion in the continuous endotoxin group. Data are expressed as mean \pm SEM. Differences between groups were evaluated using 2-way ANOVAs (of time \times group), and interaction term p-values are displayed. In the right panel, dot plots of the area under the time-concentration curve (AUC) with mean \pm SEM are shown. The AUC of temperature, heart rate and MAP was corrected for baseline. Differences between groups were evaluated using with Students t-tests. * $p < 0.05$, ** $p < 0.01$, *** $p < 0.0001$.

Discussion

Herein, we characterize a novel human *in vivo* model of systemic inflammation elicited by continuous endotoxin infusion. Furthermore, we provide a framework for interpretation of this model by also describing two models of systemic inflammation elicited by bolus administration of endotoxin. This novel model of continuous infusion resulted in a higher production of IL-6, IL-10, MCP-1 and MIP-1 α , and different kinetics of all cytokines as well as circulating leukocyte numbers. Furthermore, it resulted in a more pronounced rise in temperature and heart rate, and prolonged duration of flu-like symptoms. As such, this novel model induces a more pronounced and sustained systemic inflammatory response. There were no relevant differences in cytokine responses, clinical parameters, and leukocyte kinetics between bolus administrations of 1 or 2 ng/kg endotoxin. In addition, unsupervised clustering and exploratory factor analysis revealed identical clusters of cytokines, some of which are clearly associated with clinical symptoms and fever.

We are the first to describe a model of continuous infusion of endotoxin at a relatively high dose of 1 ng/kg/h. Low dose endotoxin infusion of another *E. coli* derived batch (G2 B274, 0.075 ng/kg/h) has been described previously²⁰. At this lower dose, endotoxin infusion increased body temperature with 0.5 $^{\circ}\text{C}$, and cytokine levels peaked to 5–10 and 20–70 pg/mL for TNF- α and IL-6, respectively²⁰. These changes are far more discrete compared with the higher dose continuous infusion model reported here, in which body temperature rises with 2.5 $^{\circ}\text{C}$ and peak levels of TNF α and IL-6 are 340 pg/ml and 1000 pg/mL respectively. As such, low dose infusion mimics low-grade inflammation, as observed in chronic illnesses such as metabolic syndrome, atherosclerosis and type

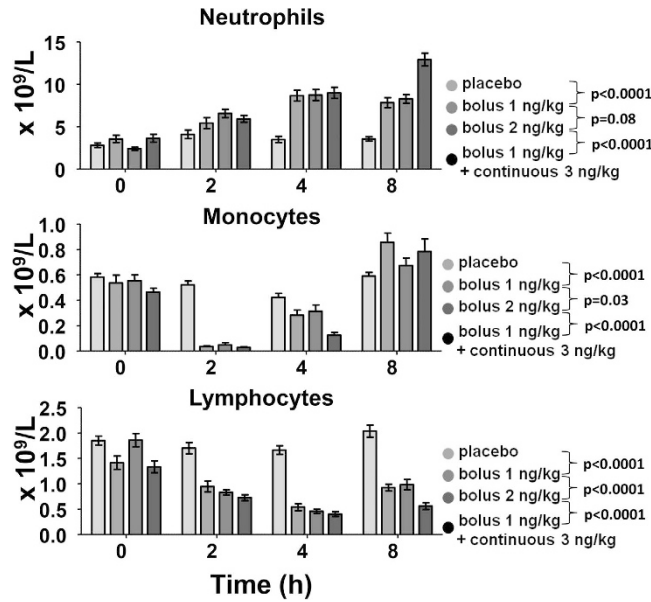


Figure 4. Time course of leukocytes. Bars represent mean \pm SEM of circulating numbers of neutrophils, monocytes and lymphocytes. Differences between groups were evaluated using 2-way ANOVAs (time \times group), and interaction term p-values are displayed.

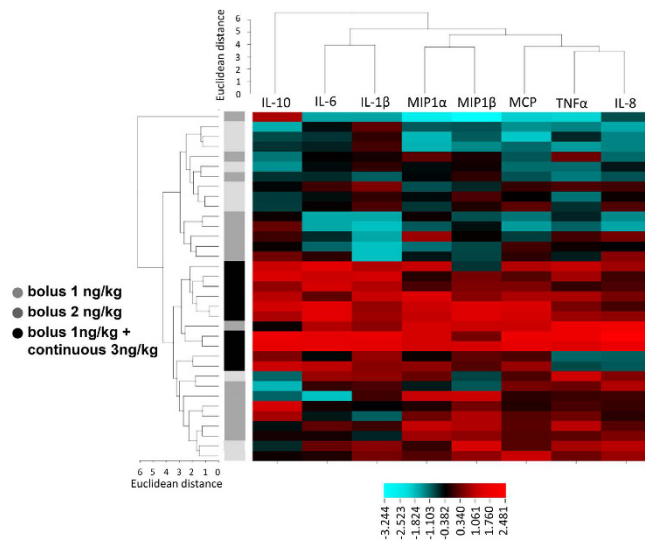


Figure 5. Hierarchical clustering of cytokines and chemokines and subjects. Each subjects occupies a row and each cytokine or chemokines occupies a column. The color code shows the normalized, log-transformed plasma concentration below (blue) or above (red) the mean, or at the median (black). The vertical axis on the left shows the color code of each subject classified as 1 ng/kg (light grey), 2 ng/kg (dark grey) or continuous infusion (black).

2 diabetes²⁰, whereas high dose infusion results in more profound systemic inflammation as observed in patients with sepsis. The cumulative dose of 4 ng/kg of endotoxin has been administered safely as a bolus in previous studies^{10–12}. Therefore, no safety issues were expected, and indeed no serious adverse events occurred.

Previous studies have evaluated the dose-effects of different batches of endotoxin, in bolus administrations ranging from 0.5 ng/kg to 4 ng/kg^{10–12}. These studies have shown that the extent of inflammation elicited by endotoxin administration is dose-dependent, but the difference between successive dosages may be too small to be significant. Similarly, we did not observe a clear dose-dependent effect concerning the 1 and 2 ng/kg endotoxin bolus administrations, although this was not the primary goal of this study. For most cytokines, the total response in the continuous model was higher compared to the 2 ng/kg bolus model. Although our study design does not allow to differentiate whether this is due to dose or infusion mode, these data indicate a more profound systemic inflammatory response using the continuous infusion protocol. However, in this context it is noteworthy that the total production of TNF- α and CXCL8 remained similar to that observed after bolus administration of 2 ng/kg

	Factor 1	Factor 2	Factor 3	Factor 4
% of variance explained	64.5%	10.9%	9.2%	7.5%
CXCL8	0.999			
TNF- α	0.805			0.189
MCP-1	0.472	0.213	-0.255	0.256
IL-10		1.010		
IL-1 β			-1.008	
IL-6	0.243	0.262	-0.688	
MIP-1 β				0.989
MIP-1 β	0.302			0.730

Table 2. Exploratory factor analysis pattern matrix. Pattern matrix after oblimin rotation with Kaiser Normalisation as obtained from EFA on log-transformed normalized areas under time-concentration curves of cytokines after endotoxin administration. Only loadings >0.1 are displayed.

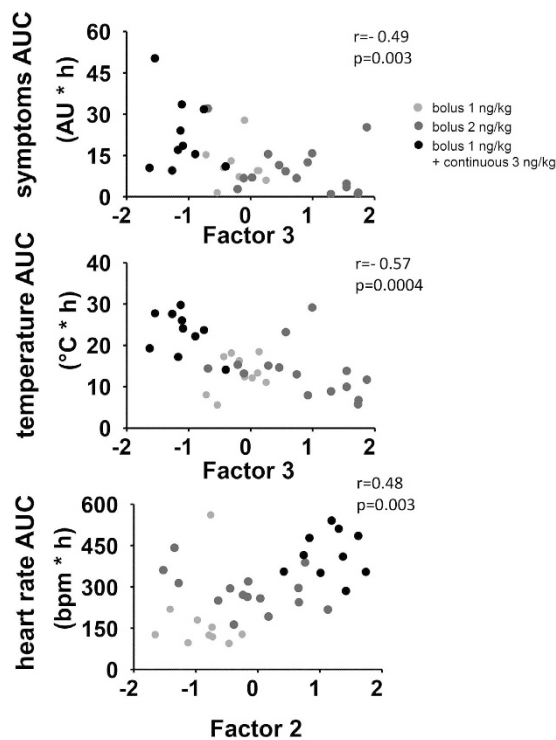


Figure 6. Correlations of factors with clinical parameters. Correlations between individual score on Factor 3 and the area under the curve (AUC), Factor 3 and symptoms (Panel A) and the baseline-corrected AUC of temperature (Panel B) and Factor 2 and the baseline-corrected AUC of heart rate (Panel C). R and p-values were calculated using Pearson correlations.

endotoxin. TNF- α is known as the primary mediator in the inflammatory response and CXCL8 attracts and activates leukocytes to the site of infection²¹. Speculatively, both TNF- α and CXCL8 are under the control of a negative feedback mechanism that prevents unrestrained triggering of the inflammatory cascade, thereby prohibiting an uncontrolled pro-inflammatory response. This theory is supported by the observation that in the continuous endotoxin infusion group, plasma levels of TNF- α are already declining while endotoxin infusion continues. This phenomenon is also observed in patients with sepsis, in whom plasma levels of TNF- α decline rapidly and therefore do not represent disease severity²². In contrast to the restrained production of TNF- α and CXCL8, we observed a fourfold increase in IL-10 and IL-6 during continuous endotoxin infusion in comparison to bolus administration. IL-10 is the archetypal anti-inflammatory cytokine which inhibits the production of TNF- α and IL-1 β . IL-6 exerts both pro- and anti-inflammatory effects, as it not only activates B- and T-lymphocytes and triggers the acute phase response and the coagulation cascade, but also can inhibit production of TNF- α ²¹. Therefore, the distinct surge in IL-10 and IL-6 levels may be part of the negative feedback mechanism that controls TNF- α and CXCL8. Understanding the orchestration of the pro- and anti-inflammatory balance is of great interest, as a shift towards anti-inflammation is observed in patients with ongoing systemic inflammation²³. This shift is presumed to prevent collateral damage of the pro-inflammatory response, but can also result in loss of

immunocompetence and subsequently increase susceptibility to secondary infections. In sepsis patients, this phenomenon is termed sepsis-induced immunoparalysis²⁴, although it is also observed in patients following trauma²⁵ and cardiac resuscitation²⁶ within hours after the insult. Therefore, the disproportionate production of anti-inflammatory cytokines during continuous infusion may mirror inflammation-induced immunoparalysis observed in patients.

Two independent, unsupervised clustering methods yielded similar groups of cytokines. Although these analyses uncover the relationships between cytokines, they do not provide a theoretical framework to explain these relationships and need to be interpreted with caution. Nevertheless, some notable relationships are observed. First, the primordial anti-inflammatory cytokine IL-10 has its own cluster, which explains 10% of the variance of the data. Second, the aforementioned pro-inflammatory cytokine TNF- α and the chemokine CXCL8 are closely linked. The third group consists of IL-1 β and IL-6, which are both potent pyrogens. The last group consists of MIP-1 α and MIP-1 β , both chemokines produced by macrophages, which attract and activate granulocytes and stimulate the production of other cytokines. Perhaps not surprisingly, component 3, with pyrogens IL-6 and IL-1 β correlates significantly with the development of fever and symptoms. A direct correlation between the level of cytokines and clinical outcomes was previously unidentified¹⁰. It appears plausible that, using exploratory factor analysis, we have increased the power to identify meaningful correlations by quantifying the response of each individual on factors, which are groups of cytokines that act alike, instead of the cytokines by themselves.

Endotoxemia models have limitations. First, endotoxemia is an experimental model of inflammation, which only embodies certain aspects of the pathophysiology of sepsis, trauma, burns, and major surgery. However, as these conditions are heterogeneous by themselves, their pathogenesis is difficult to study in patients. Therefore, endotoxemia models should be envisioned as a complementary method to study the pathophysiology of systemic inflammation, in addition to *in vitro*, *ex vivo* and animal studies, and clinical studies in patients. Second, we did not identify relevant changes in mean arterial blood pressure in comparison to the placebo group. This is in contrast to the findings of a previous study in which a bolus administration of 4 ng/kg EC-5 endotoxin resulted in a profound hyperdynamic state with depressed left ventricular ejection fraction and reduced myocardial contractility²⁷. Perhaps a bolus administration of 4 ng/kg, instead of a gradual infusion is required to produce such effects. The herein described models should therefore be used with apprehension to study hemodynamic changes in patients with systemic inflammation, and other models of sepsis may be more suitable for this purpose. We have not included a group in which a bolus injection of 4 ng/kg was administered to identify if differences between bolus and continuous infusion are the resultant of differences in dose or infusion rate. This limits the interpretation as to what extent the differences between the models are caused by dose or infusion mode.

The human model of systemic inflammation evoked by continuous infusion of endotoxin as described in the present study provides several new research opportunities. In bolus models, the inflammatory response comes and goes rapidly, limiting the possibility to demonstrate an effect of an intervention initiated following endotoxin administration. With continuous infusion, inflammation develops more gradually and is sustained for several hours, which extends the time window to demonstrate an effect of a therapeutic intervention, probably to a time point after initiation of endotoxin infusion. This is highly relevant, as in most patients with systemic inflammation, such as those suffering from sepsis, trauma or burns, there will be no opportunity for treatment before the inflammatory insult. Being able to demonstrate efficacy of an intervention administered during inflammation would improve the clinical applicability. In addition, although still relatively short-lived, continuous endotoxin infusion may better represent the physiologic response of sustained immune triggering as observed in patients, including the emerging negative feedback mechanisms and development of endotoxin tolerance.

In conclusion, continuous infusion of endotoxin elicits a safe, reproducible, controlled, systemic inflammatory response in humans *in vivo*, which lasts for several hours. This model provides new options to study the innate immune response during continuous exposure to inflammatory stimuli. Furthermore, it offers a larger time window to evaluate immunomodulatory interventions following the onset of inflammation.

Methods

Study design. Data were obtained from the control arms of three randomized controlled studies, using placebo or endotoxin bolus administrations of 1 or 2 ng/kg, or a bolus administration of 1 ng/kg followed by continuous infusion of endotoxin at a dose of 1 ng/kg/h. Studies were performed after approval of the local ethics committee CMO Regio Arnhem-Nijmegen and are registered at ClinicalTrials.gov (NCT02642237 (December 2015); NCT02085590 (March 2014); NCT02612480 (November 2015), respectively). All study procedures were in accordance with the declaration of Helsinki, including the latest revisions.

The purpose of this report is to characterize a novel human endotoxemia model aimed at eliciting systemic inflammation in a more clinically relevant manner and potentially providing more opportunities for pharmacologic modulation. To provide an interpretational context, data of bolus injections of 1 and 2 ng/kg of the same endotoxin are also described. Because we did not include a group that received a bolus administration of 4 ng/kg (the same cumulative dose as used in the continuous infusion group), it needs to be stressed that differences between the continuous infusion group and the bolus groups may either originate from a difference in infusion rate or a difference in cumulative dose.

Study protocols. Eligible subjects were healthy, non-smoking male subjects aged 18–35 years, with a normal physical examination, electrocardiography, and routine laboratory values at the screening visit. Exclusion criteria were pre-existent disease, febrile illness in the past four weeks and drug use. All subjects gave written informed consent to participate in the study. Before the experiment, subjects refrained from caffeine and alcohol for 24 h and from food and drinks for 12 h. Radial artery cannulation (Angiocath; Becton Dickinson, USA) facilitated blood pressure monitoring (Edward Lifesciences, Irvine, CA, USA) and blood withdrawal. A venous cannula was placed in an antebachial vein for intravenous (i.v.) hydration and endotoxin administration. A three-lead

electrocardiogram registered heart rate. All haemodynamic data was recorded with an interval of 30 seconds using an in-house developed system from a Philips M50 monitor (Eindhoven, The Netherlands).

To prevent vasovagal responses subjects were prehydrated by infusion of 1.5 L glucose 2.5%/NaCl 0.45% in one hour²⁸. Purified lipopolysaccharide (LPS, US Standard *Escherichia coli* O:113 endotoxin) was obtained from the Pharmaceutical Development Section of the National Institutes of Health (Bethesda, MD, USA). The lyophilized powder was reconstituted in 5 mL NaCl 0.9% for injection and vortex mixed for 20 min. An i.v. bolus of endotoxin was administered at a dose of 1 ng/kg or 2 ng/kg at 0 h. Continuous infusion was initiated after a bolus of 1 ng/kg at 0 h, followed by a continuous infusion at 1 ng/kg/h for 3 h, resulting in a cumulative dose of 4 ng/kg shown to be safe in previous studies^{10–12}. The placebo group received matched bolus volumes of vehicle (NaCl 0.9%) at 0 h. Hydration was continued with 150 ml/h for 6 h, and 75 ml/h during the rest of the experiment. Every 30 min, temperature was measured using a tympanic thermometer (FirstTemp Genius 2; Covidien, Dublin, Ireland) and flu-like symptoms (headache, nausea, shivering, muscle and back pain) were scored on a six-point scale (0 = no symptoms, 5 = worst ever experienced), resulting in a total symptom score range of 0–25.

Cytokine analysis. Ethylenediaminetetraacetic-(EDTA) anticoagulated blood was collected at various time points, centrifuged (2000 g, 4 °C, 10 min) and plasma was stored at –80 °C until analysis. As plasma concentrations may differ between assay manufacturers and batches, we re-analyzed concentrations of TNF- α , IL-6, CXCL8, IL-10, IL-1 β , MIP-1 α , MIP-1 β and MCP-1 in all samples batchwise in one run using a simultaneous Luminex assay (R&D systems; Abingdon Science Park, UK). The lower detection limits were as follows; TNF α 1,46 pg/mL, IL-1B 0,76 pg/mL, IL-6 1,76 pg/mL, CXCL8 1,41 pg/mL, IL-10 1.22 pg/mL, IFN γ 0,66 pg/mL, MIP1a 74,4 pg/mL, MIP1B 34 pg/mL, IL-1RA 26 pg/mL and MCP-1 13,2 pg/mL. Cross-reactivity was below 0.5% for all the cytokines, and the interassay variation was below 17%.

Leukocyte counts. Analysis of leukocyte counts were measured using routine methods also used for patient samples (flow cytometric analysis on a Sysmex XE-5000).

Statistical analysis. Distribution of data was tested for normality using Shapiro-Wilk test. As all data were normally distributed, they are presented as mean \pm SEM. Total cytokine production is expressed as the area under the time curve (AUC) and group differences were analyzed using unpaired Students t-tests. Differences between groups in kinetics were analyzed using two-way analysis of variance (ANOVA) (group \times time). Within group comparisons were made using one-way ANOVA followed by Bonferroni post-hoc tests. Hierarchical clustering analysis (HCA) was used to analyze coherence between cytokines. HCA is an unsupervised method to represent the relationships among variables with the length of the branch reflecting the degree of similarity. AUCs of cytokines from the endotoxemia groups were log-transformed and normalized, after which HCA was performed using Euclidean distances and an average clustering algorithm (CIMminer, Genomics and Bioinformatics group, National Cancer Institute, Bethesda, MD, USA). This analysis identified clusters of the cytokines (AUCs) and subjects. Exploratory factor analysis (EFA) was performed to identify groups of cytokine responses that correlate to such an extent that they could be summarized into one new variable (a factor). Thereby EFA is an unsupervised method that identifies latent constructs (or factors) which can summarize data in factors that cannot be measured directly. These factors can be used to assess the coherence between cytokines and to assess the relation between clusters of cytokines with clinical parameters. EFA was performed on log-transformed cytokine AUCs using Oblimin rotation, as we assume that latent constructs of cytokine data may correlate and not be entirely independent. The scores of the subjects on the newly derived factors, which summarize all the cytokine data, were correlated with the AUC of symptoms, change in temperature, and change in heart rate using Pearson correlation analysis. Unless specified otherwise, statistical analyses were performed using Graphpad Prism version 5.0 (Graphpad Software, San Diego, CA, USA) and SPSS for Windows 22.0 (SPSS Inc, Chicago, IL, USA). P-values $<$ 0.05 were considered statistically significant.

References

- Hotchkiss, R. S. & Karl, I. E. The pathophysiology and treatment of sepsis. *N. Engl. J. Med.* **348**, 138–150 (2003).
- Lord, J. M. *et al.* The systemic immune response to trauma: An overview of pathophysiology and treatment. *Lancet* **384**, 1455–1465 (2014).
- Finnerty, C. C. *et al.* Cytokine Expression Profile Over Time in Severely Burned Pediatric Patients. *Shock* **26**, 13–19 (2006).
- Watt, D. G., Horgan, P. G. & McMillan, D. C. Routine clinical markers of the magnitude of the systemic inflammatory response after elective operation: A systematic review. *Surg. (United States)* **157**, 362–380 (2015).
- Patel, P. N., Shah, R. Y., Ferguson, J. F. & Reilly, M. P. Brief Review Human Experimental Endotoxemia in Modeling the Pathophysiology, Genomics, and Therapeutics of Innate Immunity in Complex Cardiometabolic Diseases. *Arterioscler Thromb Vasc Biol.* **35**(3), 25–34 Mar (2015).
- Cohen, J. *et al.* Sepsis: a roadmap for future research. *Lancet Infect. Dis.* **15**, 581–614 (2015).
- Seok, J. *et al.* Genomic responses in mouse models poorly mimic human inflammatory diseases. *Proc. Natl. Acad. Sci. USA* **110**, 3507–12 (2013).
- Andreasen, a. S. *et al.* Human endotoxemia as a model of systemic inflammation. *Curr. Med. Chem.* **15**, 1697–705 (2008).
- Bahador, M. & Cross, A. S. From therapy to experimental model: a hundred years of endotoxin administration to human subjects. *J. Endotoxin Res.* **13**, 251–79 (2007).
- Suffredini, a. F., Hochstein, H. D. & McMahon, F. G. Dose-related inflammatory effects of intravenous endotoxin in humans: evaluation of a new clinical lot of *Escherichia coli* O:113 endotoxin. *J. Infect. Dis.* **179**, 1278–1282 (1999).
- Kuhns, D. B., Alvord, W. G. & Gallin, J. I. Increased circulating cytokines, cytokine antagonists, and e-selectin after intravenous administration of endotoxin in humans. *J. Infect. Dis.* **171**, 145–152 (1995).
- Elin, R. J. *et al.* Properties of reference *Escherichia coli* endotoxin and its phthalylated derivative in humans. *J. Infect. Dis.* **144**, 329–336 (1981).
- Draisma, A., Pickkers, P., Bouw, M. P. W. J. M. & van der Hoeven, J. G. Development of endotoxin tolerance in humans *in vivo*. *Crit. Care Med.* **37**, 1261–1267 (2009).

14. Ramakers, B. P. *et al.* Dipyridamole augments the antiinflammatory response during human endotoxemia. *Crit. Care* **15**, R289 (2011).
15. van der Poll, T., Coyle, S. M., Barbosa, K., Braxton, C. C. & Lowry, S. F. Epinephrine inhibits tumor necrosis factor- α and potentiates interleukin 10 production during human endotoxemia. *J. Clin. Invest.* **97**, 713–9 (1996).
16. van Eijk, L. T. *et al.* Effect of the anti-hepcidin Spiegelmer[®] lexaptetid on inflammation-induced decrease in serum iron in humans. *Blood* **124**, 2643–2646 (2014).
17. Leentjens, J. *et al.* Reversal of immunoparalysis in humans *in vivo*: a double-blind, placebo-controlled, randomized pilot study. *Am. J. Respir. Crit. Care Med.* **186**, 838–45 (2012).
18. van Eijk, L. T. *et al.* The effect of iron loading and iron chelation on the innate immune response and subclinical organ injury during human endotoxemia, a randomized trial. *Haematologica* **99**(3), 579–87 Mar (2014).
19. SJ, P. & PE, W. Experimental models of gram-negative sepsis. *Br J Surg.* **88**, 22–30 (2001).
20. Taudorf, S., Krabbe, K. S., Berg, R. M. G., Pedersen, B. K. & Møller, K. Human models of low-grade inflammation: bolus versus continuous infusion of endotoxin. *Clin. Vaccine Immunol.* **14**, 250–5 (2007).
21. Blackwell, T. S. & Christman, J. W. Sepsis and cytokines: current status. *Br. J. Anaesth.* **77**, 110–117 (1996).
22. Gomez, H. G. *et al.* Immunological Characterization of Compensatory Anti-Inflammatory Response Syndrome in Patients With Severe Sepsis: A Longitudinal Study. *Crit. Care Med.* **1992**, 771–780 (2013).
23. Leentjens, J., Kox, M., van der Hoeven, J. G., Netea, M. G. & Pickkers, P. Immunotherapy for the adjunctive treatment of sepsis: from immunosuppression to immunostimulation. Time for a paradigm change? *Am. J. Respir. Crit. Care Med.* **187**, 1287–93 (2013).
24. Hotchkiss, R. S., Monneret, G. & Payen, D. Immunosuppression in sepsis: A novel understanding of the disorder and a new therapeutic approach. *Lancet Infect. Dis.* **13**, 260–268 (2013).
25. Timmermans, K. *et al.* Plasma levels of danger-associated molecular patterns are associated with immune suppression in trauma patients. *Intensive Care Med.* **42**, 1–11 (2016).
26. Timmermans, K. *et al.* The Involvement of Danger-Associated Molecular Patterns in the Development of Immunoparalysis in Cardiac Arrest Patients. *Crit. Care Med.* **43**, 2332–2338 (2015).
27. Suffredini, A. *et al.* The cardiovascular response of normal humans to the administration of endotoxin. *N. Engl. J. Med.* **321**, 280–287 (1989).
28. van Eijk, L. T. *et al.* Severe vagal response after endotoxin administration in humans. *Intensive Care Med.* **30**, 2279–81 (2004).

Acknowledgements

We would like to thank Dr. Arjan van Laarhoven for his advise and comments on hierarchical clustering and factor analysis. We are indebted to Dr. Anthony F. Suffredini for his critical review of the manuscript and valuable suggestions.

Author Contributions

D.K., R.K., L.H., E.T. and L.v.d.E. performed the experiments, J.G. performed the laboratory analysis, D.K. and R.K. performed the statistical analysis, prepared the figures and wrote the manuscript, N.R., M.K. and P.P. critically reviewed the manuscript and supervised the research. All authors reviewed the manuscript.

Additional Information

Competing financial interests: The authors declare no competing financial interests.

How to cite this article: Kiers, D. *et al.* Characterization of a model of systemic inflammation in humans *in vivo* elicited by continuous infusion of endotoxin. *Sci. Rep.* **7**, 40149; doi: 10.1038/srep40149 (2017).

Publisher's note: Springer Nature remains neutral with regard to jurisdictional claims in published maps and institutional affiliations.



This work is licensed under a Creative Commons Attribution 4.0 International License. The images or other third party material in this article are included in the article's Creative Commons license, unless indicated otherwise in the credit line; if the material is not included under the Creative Commons license, users will need to obtain permission from the license holder to reproduce the material. To view a copy of this license, visit <http://creativecommons.org/licenses/by/4.0/>

© The Author(s) 2017