

# SCIENTIFIC REPORTS

**OPEN**

## Image Quality and Radiation Dose for Prospectively Triggered Coronary CT Angiography: 128-Slice Single-Source CT versus First-Generation 64-Slice Dual-Source CT

Received: 23 February 2016  
Accepted: 19 September 2016  
Published: 18 October 2016

Jin Gu, He-shui Shi, Ping Han, Jie Yu, Gui-na Ma & Sheng Wu

This study sought to compare the image quality and radiation dose of coronary computed tomography angiography (CCTA) from prospectively triggered 128-slice CT (128-MSCT) versus dual-source 64-slice CT (DSCT). The study was approved by the Medical Ethics Committee at Tongji Medical College of Huazhong University of Science and Technology. Eighty consecutive patients with stable heart rates lower than 70 bpm were enrolled. Forty patients were scanned with 128-MSCT, and the other 40 patients were scanned with DSCT. Two radiologists independently assessed the image quality in segments (diameter >1 mm) according to a three-point scale (1: excellent; 2: moderate; 3: insufficient). The CCTA radiation dose was calculated. Eighty patients with 526 segments in the 128-MSCT group and 544 segments in the DSCT group were evaluated. The image quality 1, 2 and 3 scores were 91.6%, 6.9% and 1.5%, respectively, for the 128-MSCT group and 97.6%, 1.7% and 0.7%, respectively, for the DSCT group, and there was a statistically significant inter-group difference ( $P \leq 0.001$ ). The effective doses were 3.0 mSv in the 128-MSCT group and 4.5 mSv in the DSCT group ( $P \leq 0.001$ ). Compared with DSCT, CCTA with prospectively triggered 128-MSCT had adequate image quality and a 33.3% lower radiation dose.

Coronary computed tomography angiography (CCTA) has been widely used as a noninvasive technique to evaluate coronary artery lesions, but the carcinogenic potential of high radiation dose is of concern to radiologists, patients, referring physicians, CT scanner manufacturers and regulatory agencies<sup>1–3</sup>.

Several CCTA methods have been used to reduce the radiation dose. The prospectively triggered protocol is a well known scanning technique that can substantially reduce the CCTA radiation dose<sup>4,5</sup>, and some studies have indicated that the technique can provide good image quality with a low radiation dose<sup>6–9</sup>. The second method involves adjusting the scan parameters, such as the tube voltage, tube current and pitch<sup>1,10</sup>. Studies have shown that the effective dose increases linearly with the tube current<sup>3,11</sup>. The third technique includes iterative reconstruction techniques that can also be used to reduce the radiation dose while maintaining image quality<sup>12</sup>. To reduce the radiation dose, it is important to use different methods with the scanner provided.

Compared with 16-slice and 64-slice CT, 128-slice CT has more detectors, which means larger volume coverage and shorter scan times. These advantages are useful for the application in CCTA. Compared with the other scanner systems<sup>7–8,13</sup>, 128-slice single-source CT (128-MSCT) can use a low-tube current with acceptable images<sup>14,15</sup>. First-generation 64-slice dual-source CT (DSCT) is an advanced scanner for coronary CT angiography with a heart rate independent high temporal resolution of 83 ms. In this study, we compared the image quality and radiation dose of CCTA from prospectively triggered 128-MSCT versus prospectively gated DSCT.

Department of Radiology, Union Hospital, Tongji Medical College, Huazhong University of Science and Technology, 1277 Jiefang Avenue, Wuhan 430022, P. R. China. Correspondence and requests for materials should be addressed to P.H. (email: cjr.hanping@vip.163.com)

## Materials and Methods

None of the authors in this study are employed by Siemens Medical Solutions (Forchheim, Germany). This study was approved by the Medical Ethics Committee at Tongji Medical College of Huazhong University of Science and Technology. All patients were informed of the purpose of the study, and written consent was obtained from all patients. The study methods were performed in accordance with the approved guidelines.

**Patients.** Eighty consecutive patients without revascularization therapy and with stable heart rates lower than 70 bpm before the exam were enrolled in the study. The heart rate change was less than 10 bpm, as recorded before and during the performance of the CCTA. The patients were randomly divided into two groups. Forty patients were scanned with the 128-MSCT (Definition AS+, Siemens Healthcare, Forchheim, Germany), and the other 40 patients were scanned with the DSCT (Somatom Definition, Siemens Healthcare, Forchheim, Germany).

**CT scanning protocols.** All patients were scanned with the prospectively triggered sequential scanning mode. The 128-MSCT group was scanned with the following parameters:  $128 \times 0.6$  mm collimation, gantry rotation time 0.3 s, and time resolution 150 ms. The following parameters were used for the DSCT group:  $2 \times 32 \times 0.6$  mm collimation, gantry rotation time 0.33 s, and time resolution 83 ms. The tube voltage was 120 kV for both groups, but the reference tube current-time product was 240 mAs for the 128-MSCT group and 400 mAs for the DSCT group. The automatic tube current modulation (ATCM) technique (i.e., CARE Dose 4D in a Siemens scanner) was used to reduce the radiation doses in both groups. The center of the triggering window was set to 70% of the R-R interval, and the padding phase was  $\pm 8\%$  (80 msec) for both groups. The scanning range for all examinations extended from the level of the carina to the diaphragm.

Before the examination, all patients were instructed on breath holding to minimize artifacts during their examinations. Nitroglycerin spray (0.5 mg, Shandong Province, China) was used sublingually 5 min before the examination to dilate the coronary arteries. The contrast material of Iopamidol (400 mgI/ml; Bayer Schering Pharma, Berlin, Germany), followed by 40 ml normal saline, was injected through the antecubital vein with an automatic injector. Bolus tracking was used to start the scan with a tracking area set at the root of the descending aorta. The flow rate was 4.5 ml/s. Because the scan time was shorter in the 128-MSCT group, the patients in this group received only 60–65 ml contrast materials, whereas the patients in the DSCT group received 70–75 ml. There was an additional delay time of 5 s before the CT data acquisition.

**Post-processing.** The data constructive section thickness was 0.75 mm; the increment was 0.5 mm, and the reconstruction kernel was B26f Heartview smooth. All images were analyzed with semi-automated post-processing software (Aquarius; TeraRecon, San Mateo, CA, USA). Image post-processing methods on the workstation included 3D volume rendering (VR), multi-planar reconstruction (MPR), curved planar reconstruction (CPR), and maximum intensity projection (MIP) using Circulation software.

**Image analysis.** In accordance with the scheme proposed by the American Heart Association<sup>16</sup>, the coronary artery tree was divided into 16 segments. The intermediate artery, if present, was designated segment 17. The image quality of the coronary arteries was evaluated for each segment. According to Stolzmann *et al.*<sup>17</sup>, all segments with a diameter of at least 1 mm at their origin were evaluated using a three-point grading scale: score 1 corresponded to excellent image quality (no motion or stair-step artifacts), score 2 indicated moderate image quality (moderate motion artifacts and stair-step artifacts or blurring), and score 3 indicated insufficient image quality (distinct motion artifacts and stair-step artifacts). Images with a score of 1 or 2 were considered to be acceptable for diagnosis. All images were evaluated by two experienced cardiac radiologists who were unaware of the patients' information. After they performed separate evaluation, the radiologists discussed their findings and agreed on the final image quality.

**Radiation dose.** In this study, we calculated the radiation exposure of the CCTA scan. The effective tube current, volume CT dose index and dose-length product of CCTA were obtained from the patient protocol of the system. The effective dose was derived from the product of the dose-length product and a conversion coefficient for the anatomical region examined, as proposed by the Fleischner Society<sup>18</sup>. The conversion coefficient of the chest was  $0.017 \text{ mSv}/(\text{mGy}\cdot\text{cm})^3$ ;

$$\text{effective dose (mSv)} = \text{dose-length product (mGy}\cdot\text{cm)} \times 0.017 \text{ mSv}/(\text{mGy}\cdot\text{cm}).$$

**Statistical analysis.** The statistical analysis was performed using SPSS 12.0. Continuous variables were expressed as the mean  $\pm$  standard deviation (SD), and categorical variables were expressed as frequencies or percentages. The Chi-squared test was used to compare the image quality. Agreement of the image quality scores was assessed with  $\kappa$  statistics. The impact of mean heart rate on image quality was assessed by Spearman's rank-order correlation, with coefficients calculated on a per patient basis. The comparison of the mean radiation dose was performed using an independent-samples t-test. A  $P$  value  $< 0.05$  was considered statistically significant.

## Results

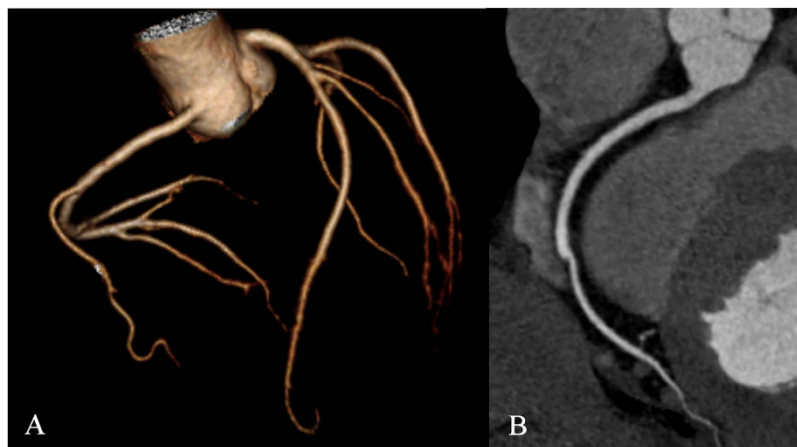
**Patients.** In this study, each group included 40 patients. The patients included asymptomatic patients with cardiac risk factors (29 patients), symptomatic patients with chest pain or stuffiness (to exclude coronary artery lesions, 40 patients) and CAD follow-up without revascularization therapy (11 patients). The patients in the two groups were adequately matched according to age, sex, mean heart rate, and body mass index ( $P = 0.210$ – $0.833$ , Table 1).

Characteristics	128-MSCT	DSCT	P
Age (years)	56.2 ± 10.4	58.1 ± 9.2	0.798
Sex [female (male)]	10 (30)	7 (33)	0.833
Mean heart rate (beats/min)	58.6 ± 5.3	58.1 ± 6.1	0.711
Body mass index (BMI, kg/m <sup>2</sup> )	24.5 ± 3.0	25.4 ± 3.4	0.210

**Table 1. Patient demographics (n = 80; the values are shown as the means ± standard deviations).** There were no significant differences in age, sex, mean heart rate, or body mass index between the two groups ( $P = 0.210$ – $0.833$ ).

Image quality	128-MSCT	DSCT	P
Score 1	482 (91.6%)	531 (97.6%)	≤0.001
Score 2	36 (6.9%)	9 (1.7%)	≤0.001
Score 3	8 (1.5%)	4 (0.7%)	≤0.001

**Table 2. Image quality evaluated with a three-point grading scale (score 1 corresponded to excellent image quality, score 2 to moderate image quality and score 3 to insufficient image quality).** More segments received a score of 1 in the DSCT group than in the 128-slice CT group ( $P = 0.001$ ). More segments with diagnosable image quality (scores 1 and 2) were found in the DSCT group than in the 128-MSCT group ( $P = 0.00012$ ).

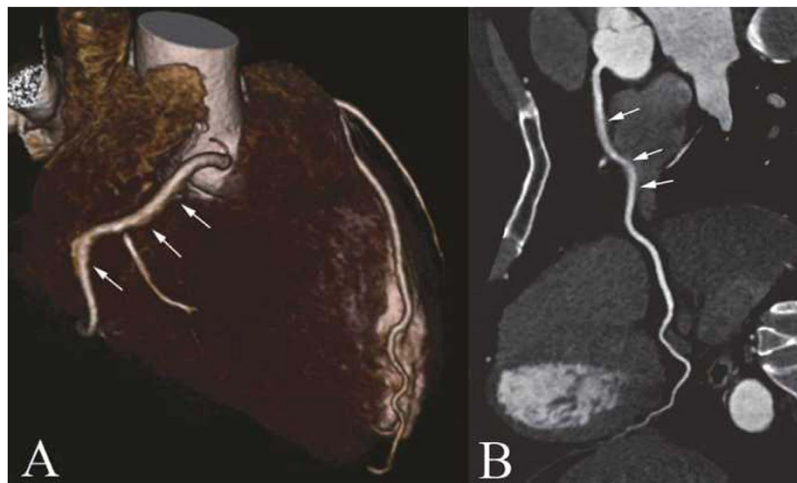


**Figure 1. (A,B)** Example of score 1 from the 128-MSCT group: The patient, a 47-year-old man with chest pain, underwent prospectively triggered CCTA using 128-MSCT, and his BMI was 26.4 kg/m<sup>2</sup>. CCTA reconstruction is displayed in 3D VR (A) and CPR of RCA (B) with good image quality (score 1). The effective dose was 3.6 mSv.

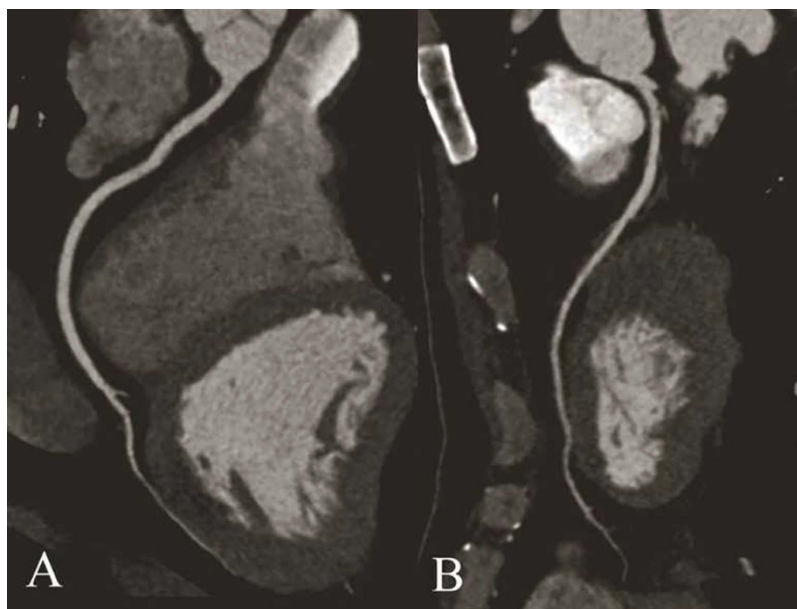
**Scan Parameters.** The acquisition times were ( $4.97 \pm 0.58$ ) s in the 128-MSCT group and ( $8.99 \pm 0.98$ ) s in the DSCT group. There was a 44.7% decreased scan time in the 128-MSCT group compared with the DSCT group ( $P \leq 0.001$ ), which was responsible for the lower amount of contrast material and higher triggering threshold in the 128-MSCT group compared with the DSCT group.

The tube voltage was 120 kV in both groups, but on average, the reference tube current was higher for the DSCT scan (400 mAs) compared with the 128-MSCT scan (240 mAs). After the ATCM technique was used, the effective tube current in the 128-MSCT group ( $196.9 \pm 48.2$  mAs; range: 93 mAs–285 mAs) was significantly lower than that in the DSCT group ( $295.7 \pm 63.5$  mAs; range: 176 mAs–431 mAs) ( $P \leq 0.001$ ).

**Image quality.** Agreement was excellent ( $\kappa = 0.86$ ) between the two radiologists for the segment image quality scores. In total, there were 1114 coronary arterial segments, and 44 segments were excluded because of their smaller (<1 mm) diameter (25 in the 128-MSCT group and 19 in the DSCT group). The remaining 1070 segments were evaluated (526 segments in the 128-MSCT group and 544 segments in the DSCT group; Table 2). The percentage of segments with diagnosable image quality (scored as 1 and 2) was 98.5% (518/526) for the 128-MSCT group and 99.3% (540/544) for the DSCT group, and the difference was significant ( $P = 0.00012$ ). In the 128-MSCT group, 91.6% (482/526) of the segments were scored as excellent (Fig. 1), but 36 segments, mainly middle segments of the right coronary artery, were evaluated as having moderate image quality (Fig. 2). In the DSCT group, 97.6% (531/544) of the segments were scored as excellent (Fig. 3). The percentage of segments scored as 1 in the DSCT group was significantly higher than in the 128-MSCT group ( $P = 0.001$ ). Eight segments in the 128-MSCT group and 4 segments in the DSCT group had poor image quality and were scored as 3.



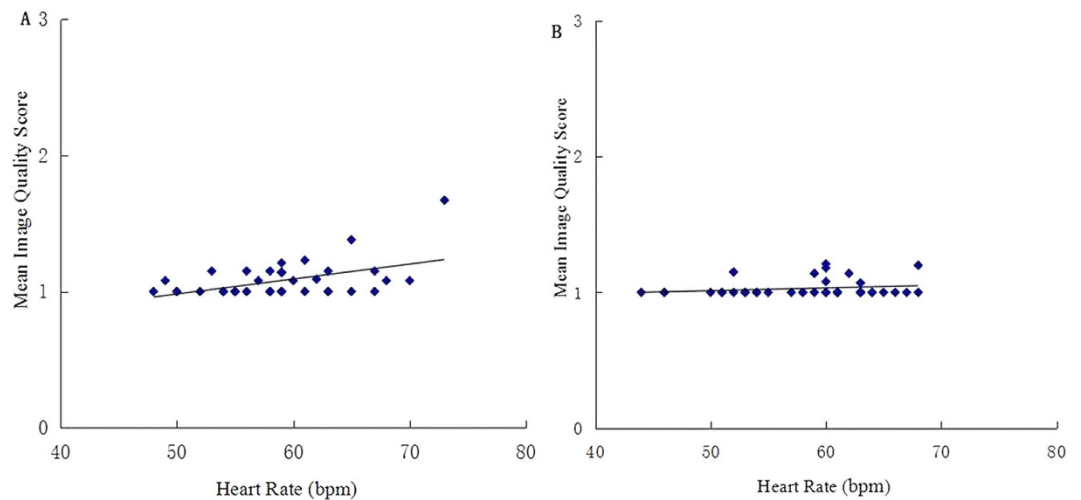
**Figure 2.** (A,B) Example of score 2 from the 128-MSCT group: The patient was a 47-year-old man with diabetes who underwent prospectively ECG-gated CCTA, to exclude CAD, with 128-MSCT, and his BMI was 25.0 kg/m<sup>2</sup>. CCTA reconstruction is displayed in 3D VR (A) and CPR of RCA. (B) The image score of the middle segment of RCA was scored 2 (arrowhead), and the other segments were scored 1. The effective dose was 3.3 mSv.



**Figure 3.** (A,B) Example of score 1 from the DSCT group: The patient was a 42-year-old man with chest stuffiness who underwent prospectively triggered CCTA, to excluded CAD, with DSCT, and his BMI was 25.2 kg/m<sup>2</sup>. CCTA reconstruction is displayed in CPR for RCA (A) and LAD (B) with a good image quality (score 1). The effective dose was 4.1 mSv.

**Impact of heart rate and heart rate variability on image quality.** The average heart rate during scanning was  $58.6 \pm 5.3$  bpm (range) for 128-MSCT and  $58.1 \pm 6.1$  bpm (range) for DSCT. A significant correlation between heart rate and mean image quality score was observed by per patient analysis for the 128-MSCT group ( $r = 0.48$ ,  $P < 0.01$ ), whereas no significant correlation was found for the DSCT group ( $r = 0.20$ ,  $P = 0.22$ ), as shown in Fig. 4.

**Radiation dose.** The mean effective doses in the 128-MSCT group and DSCT group were  $3.0 \pm 0.8$  mSv (range: 1.3–5.0 mSv) and  $4.5 \pm 1.0$  mSv (range: 2.5–6.7 mSv), respectively. There was a 33.3% radiation dose savings in the 128-MSCT group compared to the DSCT group ( $t = 7.2$ ,  $P \leq 0.001$ ) (Table 3).



**Figure 4.** (A,B) Linear regression plot of mean image quality scores per patient (y-axis) against heart rate (x-axis) by 128-MSCT (A) and DSCT (B). Spearman's correlation for the 128-MSCT group ( $r=0.48$ ,  $P<0.01$ ); Spearman's correlation for the DSCT group ( $r=0.20$ ,  $P=0.22$ ).

Radiation dose	128-MSCT	DSCT	<i>P</i>
Volume CT dose index (mGy)	12.0 ± 3.1	19.6 ± 4.5	≤0.001
Dose-length product (mGy.cm)	175.5 ± 48.0	262.2 ± 61.3	≤0.001
Effective dose (mSv)	3.0 ± 0.8	4.5 ± 1.0	≤0.001

**Table 3.** Radiation dose (values are shown as the means ± standard deviations).  $P \leq 0.01$  for comparisons of the volume CT dose index, dose-length product and effective dose between the two groups.

## Discussion

Some studies have compared image quality and radiation dose performed with 128-MSCT, but the comparisons have been performed against retrospective gating protocols and not versus prospective triggering modes<sup>7,8,14,15</sup>. In the present study, we compared image quality and radiation dose performed with 128-MSCT and DSCT (both performed with the prospectively triggered technique). The results suggested that 128-MSCT coronary angiography can be used with the prospective gating technique in patients with stable sinus rhythm and a heart rate below 70 bpm. The radiation dose in the 128-MSCT group was 33.3% lower than that in the DSCT group.

Prospectively triggered CCTA is a sequential technique with no table motion during the beam-on time, and it acquires image data only in a small portion of the cardiac cycle R-R interval. Therefore, this approach significantly reduces the radiation dose, which is the most attractive advantage of this scanning protocol compared to the retrospective ECG-gated technique. Arnoldi *et al.*<sup>7</sup> have reported a 57–67% dose reduction for 128-MSCT using the prospectively gated technique compared with DSCT using the retrospective ECG-gated technique. Duarte *et al.*<sup>8</sup> have reported a significant reduction in the radiation dose for 128-MSCT coronary angiography using the prospectively triggered technique compared with 64-slice CT using the retrospective ECG-gated technique.

Coronary CT angiography using the prospectively triggered technique requires high time resolution. In the present study, the image quality of most of the segments in the 128-MSCT group was sufficient for a diagnosis, but there was still a relatively higher rate of moderate image quality and a lower percentage of excellent image quality in the 128-MSCT compared with the DSCT group, primarily in the middle segment of the right coronary artery. This can be explained by several reasons. First, the vertical course of middle segment of right coronary artery which was more sensitive to the cardiac beat than other segments<sup>19</sup>. Budoff *et al.*<sup>4</sup> have reported that the ballistic movement of mid right coronary artery may be as 5 to 6 times its diameter during the twisting and torsion of the heart during the cardiac cycle, which made the motion artifacts are especially prominent in this segment. Another factor is the relatively lower time resolution of 128-MSCT compared with DSCT (83 ms VS 150 ms). In this study, the average heart rate was good matched in the two groups (128-MSCT: 58.6 ± 5.3 bpm; DSCT: 58.1 ± 6.1 bpm), but a significant correlation was observed for the 128-MSCT group not only between heart rate and mean image quality ( $r=0.48$ ,  $P<0.01$ ), which means the heart rate scanned by 128-MSCT should be more strictly controlled to guarantee the image quality and diagnostic accuracy.

The scanning parameters that affect the CT radiation dose include the tube voltage, tube current time product, pitch, section thickness, and scanning length<sup>3</sup>. The radiation dose is linearly related to the tube current when all other factors are fixed<sup>20,21</sup>. For the prospectively triggering technique, two methods are used to control the tube current: manual and automatic. The ACTM technique controls the tube current according to the size and attenuation of the body region being scanned throughout the cardiac cycle to decrease the radiation exposure automatically<sup>1,22,23</sup>. In the present study, after the ATCM technique was applied, the effective tube current was much



smaller than the reference tube current. With other scan parameters being the same, there was a 33.3% radiation dose reduction in the 128-MSCT group (3.0 mSv) compared with the DSCT group (4.5 mSv).

Other advantages of 128-MSCT included the wider collimation and shorter acquisition time compared with DSCT. In this study, the acquisition time was 4.97 s for the 128-MSCT group and 8.99 s for the DSCT group. There was a 44.7% time reduction for the 128-MSCT compared with the DSCT. A shorter acquisition time is beneficial for breath holding, reducing the occurrence of respiratory arrhythmias and the volume of contrast materials and radiation exposure<sup>24</sup>.

This study had some limitations. First, additional dose reduction techniques, such as reducing the tube voltage and the reference tube current time in patients with low body weight, were not applied. Second, most patients did not undergo invasive coronary angiography; therefore, we did not analyze the diagnostic accuracy of the different CT scanners.

## Conclusion

The present study showed that in select patients, coronary CT angiography with prospectively triggered 128-MSCT with a low tube current can provide adequate image quality with a low radiation dose compared with DSCT. We believed that these findings may have clinical utility for patients for whom a lower radiation dose is important, but currently, the technique is limited because it is not recommended at heart rates higher than 70 beats per minute because the time resolution for 128-MSCT is 150 ms.

## References

- Raff, G. L. *et al.* Radiation dose from cardiac computed tomography before and after implementation of radiation dose-reduction techniques. *J. JAMA*. **301**, 2340–2348 (2009).
- Gerber, T. C. *et al.* Ionizing radiation in cardiac imaging: a science advisory from the American Heart Association Committee on Cardiac Imaging of the Council on Clinical Cardiology and Committee on Cardiovascular Imaging and Intervention of the Council on Cardiovascular Radiology and Intervention. *J. Circulation*. **119**, 1056–1065 (2009).
- Einstein, A. J., Moser, K. W., Thompson, R. C., Cerqueira, M. D. & Henzlova, M. J. Radiation dose to patients from cardiac diagnostic imaging. *J. Circulation*. **116**, 1290–1305 (2007).
- Budoff, M. J. *et al.* Assessment of coronary artery disease by cardiac computed tomography: a scientific statement from the American Heart Association Committee on Cardiovascular Imaging and Intervention, Council on Cardiovascular Radiology and Intervention, and Committee on Cardiac Imaging, Council on Clinical Cardiology. *J. Circulation*. **114**, 1761–1791 (2006).
- Ghadri, J. R. *et al.* Image quality and radiation dose comparison of prospectively triggered low-dose CCTA: 128-slice dual-source high pitch spiral versus 64-slice single-source sequential acquisition. *Int J Cardiovas Imaging*. **28**, 1217–1225 (2012).
- Earls, J. P. *et al.* Prospectively gated transverse coronary CT angiography versus retrospectively gated helical technique: improved image quality and reduced radiation dose. *J. Radiology*. **246**, 742–753 (2008).
- Arnoldi, E. *et al.* Adequate image quality with reduced radiation dose in prospectively triggered coronary CTA compared with retrospective techniques. *J. Eur Radiol*. **19**, 2147–2155 (2009).
- Duarte, R., Fernandez, G., Castellon, D. & Costa, J. C. Prospective Coronary CT Angiography 128-MDCT versus Retrospective 64-MDCT: Improved Image Quality and Reduced Radiation Dose. *J. Heart Lung Circ*. **20**, 119–125 (2011).
- Shuman, W. P. *et al.* Prospective versus retrospective ECG gating for 64-detector CT of the coronary arteries: comparison of image quality and patient radiation dose. *J. Radiology*. **248**, 431–437 (2008).
- LaBounty, T. M. *et al.* Effect of a standardized quality-improvement protocol on radiation dose in coronary computed tomographic angiography. *J. Am J Cardiol*. **106**, 1663–1667 (2010).
- Gerber, T. C., Stratmann, B. P., Kuzo, R. S., Kantor, B. & Morin, R. L. Effect of acquisition technique on radiation dose and image quality in multidetector row computed tomography coronary angiography with submillimeter collimation. *J. Invest Radiol*. **40**, 556–563 (2005).
- Silva, A. C., Lawder, H. J., Hara, A., Kujak, J. & Pavlicek, W. Innovations in CT Dose Reduction Strategy: Application of the Adaptive Statistical Iterative Reconstruction Algorithm. *J. Am. J. Roentgenol*. Jan. **194**, 191–199 (2010).
- de Graaf, F. R. *et al.* Diagnostic accuracy of 320-row multidetector computed tomography coronary angiography in the non-invasive evaluation of significant coronary artery disease. *J. Eur Heart J*. **31**, 1908–1915 (2010).
- Arnoldi, E. *et al.* Coronary CT angiography using prospective ECG triggering: high diagnostic accuracy with low radiation dose. *J. Radiologie*. **50**, 500–506 (2010).
- Feng Q. *et al.* Prospective ECG triggering versus low-dose retrospective ECG-gated 128-channel CT coronary angiography: comparison of image quality and radiation dose. *J. Clinical Radiology*. **65**, 809–814 (2010).
- Austen, W. G. *et al.* A reporting system on patients evaluated for coronary artery disease: report of the AdHoc Committee for Grading of Coronary Artery Disease, Council on Cardiovascular Surgery, American Heart Association. *J. Circulation*. **51**, 5–40 (1975).
- Stolzmann, P. *et al.* Dual-source CT in step-and-shoot mode: noninvasive coronary angiography with low radiation dose. *J. Radiology*. **249**, 71–80 (2008).
- Mayo, J. R., Aldrich, J. & Müller, N. L. Radiation exposure at chest CT: a statement of the Fleischner Society. *J. Radiology*. **228**, 15–21 (2003).
- Chen Y. *et al.* Noninvasive visualization of coronary artery using multi-slice CT: influence of reconstruction time and heart rate on image. *J. Chin J Med Imaging Technol*. **21**, 425–429 (2005).
- Lee, E. J. *et al.* Comparison of image quality and radiation dose between fixed tube current and combined automatic tube current modulation in craniocervical CT angiography. *J. AJNR Am J Neuroradiol*. **30**, 1754–1759 (2009).
- Hermann, F. *et al.* Reduction of Radiation Dose Estimates in Cardiac 64-Slice CT Angiography in Patients after Coronary Artery Bypass Graft Surgery. *J. Invest Radiol*. **43**, 253–260 (2008).
- Kalra, M. K. *et al.* Strategies for CT radiation dose Optimization. *J. Radiology*. **230**, 619–628 (2004).
- Mulkens, T. H. *et al.* Use of an automatic exposure control mechanism for dose optimization in multi-detector row CT examinations: clinical evaluation. *J. Radiology*. **237**, 213–223 (2005).
- Hamon, M., Morello, R., Riddell, J. W. & Hamon, M. Coronary arteries: diagnostic performance of 16- versus 64-section spiral CT compared with invasive coronary angiography—meta-analysis. *J. Radiology*. **245**, 720–731 (2007).

## Acknowledgements

The study was supported by the National Natural Science Foundation of China (Grant No. 81271570).

### Author Contributions

J.G., S.W. and G.-n. M. prepared the figures; P.H. and H.-s.S. analyzed the image quality; and J.Y. and J.G. prepared the manuscript. All authors approved the final manuscript.

### Additional Information

**Competing financial interests:** The authors declare no competing financial interests.

**How to cite this article:** Gu, J. *et al.* Image Quality and Radiation Dose for Prospectively Triggered Coronary CT Angiography: 128-Slice Single-Source CT versus First-Generation 64-Slice Dual-Source CT. *Sci. Rep.* **6**, 34795; doi: 10.1038/srep34795 (2016).



This work is licensed under a Creative Commons Attribution 4.0 International License. The images or other third party material in this article are included in the article's Creative Commons license, unless indicated otherwise in the credit line; if the material is not included under the Creative Commons license, users will need to obtain permission from the license holder to reproduce the material. To view a copy of this license, visit <http://creativecommons.org/licenses/by/4.0/>

© The Author(s) 2016