

# SCIENTIFIC REPORTS

OPEN

## Zinc Resistance Mechanisms of P<sub>1B</sub>-type ATPases in *Sinorhizobium meliloti* CCNWSX0020

Mingmei Lu<sup>1</sup>, Zhefei Li<sup>1</sup>, Jianqiang Liang<sup>1</sup>, Yibing Wei<sup>2</sup>, Christopher Rensing<sup>3</sup> & Gehong Wei<sup>1</sup>

Received: 22 March 2016

Accepted: 10 June 2016

Published: 05 July 2016

The *Sinorhizobium meliloti* (*S. meliloti*) strain CCNWSX0020 displayed tolerance to high levels exposures of multiple metals and growth promotion of legume plants grown in metal-contaminated soil. However, the mechanism of metal-resistant strain remains unknown. We used five P<sub>1B</sub>-ATPases deletions by designating as  $\Delta copA1b$ ,  $\Delta fixI1$ ,  $\Delta copA3$ ,  $\Delta zntA$  and  $\Delta nia$ , respectively to investigate the role of P<sub>1B</sub>-ATPases in heavy metal resistance of *S. meliloti*. The  $\Delta copA1b$  and  $\Delta zntA$  mutants were sensitive to zinc (Zn), cadmium (Cd) and lead (Pb) in different degree, whereas the other mutants had no significant influence on the metal resistance. Moreover, the expression of *zntA* was induced by Zn, Cd and Pb whereas *copA1b* was induced by copper (Cu) and silver (Ag). This two deletions could led to the increased intracellular concentrations of Zn, Pb and Cd, but not of Cu. Complementation of  $\Delta copA1b$  and  $\Delta zntA$  mutants showed a restoration of tolerance to Zn, Cd and Pb to a certain extent. Taken together, the results suggest an important role of *copA1b* and *zntA* in Zn homeostasis and Cd and Pb detoxification in *S. meliloti* CCNWSX0020.

Heavy and transition metal homeostasis is crucial in all biological systems. Transition metals such as zinc (Zn), copper (Cu), and iron (Fe) are essential micronutrient that are required for many physiological processes but are also extremely toxic in excess. Other metals, such as cadmium (Cd), silver (Ag) and lead (Pb), are acutely toxic and represent a major threat for cell survival<sup>1,2</sup>. Organisms have evolved to contain multiple defense mechanisms to prevent overaccumulation of heavy and transition metals, such as efflux transport, intracellular sequestration, precipitation, bioadsorption and transformation, etc.<sup>3–6</sup>.

The P<sub>1B</sub>-type ATPase subfamily belongs to the P-type ATPases family and couples ATP hydrolysis to transition metal transport across cellular membranes. The P<sub>1B</sub>-type ATPases are the most widely distributed group and have the largest substrate range<sup>7</sup>. P<sub>1B</sub>-ATPases display several structural characteristics that include six to eight transmembrane helices (TMs)<sup>8</sup>, the signature sequence (CPC, CPH, SPC, PCP) present in the sixth TM (TM6), one or more metal binding domains in the cytoplasmic N-terminal or C-terminal region (N-MBD, C-MBD) and the catalytic phosphorylation site (DKTGT) between TM6 and TM7<sup>9</sup>. The P<sub>1B</sub>-ATPases play an essential role in transition metal homeostasis. P<sub>1B</sub>-ATPases have been divided into five subclasses designated P<sub>1B-1</sub> to P<sub>1B-5</sub> according to a combination of substrate specificity, sequence similarity and conserved metal binding residues present in transmembrane segments<sup>9,10</sup>. The metal specificity of the five ATPase subfamilies have been extensively studied and it has been shown that the P<sub>1B-1</sub>-ATPases transport Cu<sup>+</sup> and Ag<sup>+</sup><sup>11,12</sup>, the P<sub>1B-2</sub>-ATPases transport Zn<sup>2+</sup>, Cd<sup>2+</sup> and Pb<sup>2+</sup><sup>13,14</sup>, the P<sub>1B-3</sub>-ATPases are suggested to transport Cu<sup>2+</sup><sup>15</sup> and the P<sub>1B-4</sub>-ATPases transport Co<sup>2+</sup>, Ni<sup>2+</sup> and/or Zn<sup>2+</sup><sup>16</sup>. As to P<sub>1B-5</sub> ATPase, only the *S. meliloti* Sma1163 gene encoding for a P<sub>1B-5</sub>-ATPase that denoted *Nia* was biochemically characterized indicating Ni<sup>2+</sup> and Fe<sup>2+</sup> are substrates of *Nia*<sup>17</sup>. Moreover, two new subtype of P<sub>1B</sub>-ATPases (P<sub>1B-6</sub>, P<sub>1B-7</sub>) have been recognized recently, but none of these P<sub>1B-6</sub> and P<sub>1B-7</sub> ATPases were biochemically examined beyond their sequence classification<sup>18</sup>.

Previous studies on *S. meliloti* 2011 P<sub>1B-1</sub>-ATPases showed that five homologous Cu<sup>+</sup>-ATPases exhibited functional diversity<sup>19</sup>. These five homologous Cu<sup>+</sup>-ATPases are divided into three major subgroups, including CopA1-like transporter (CopA1a and CopA1b), CopA2-like ATPase (FixI1 and FixI2) and CopA3-like ATPase (CopA3). CopA1a is a typical Cu<sup>+</sup>-ATPase catalyzing cytoplasmic Cu<sup>+</sup> efflux to prevent overaccumulation of cytoplasmic copper. A mutation of *copA1a* resulted in a copper sensitive phenotype and an increase in

<sup>1</sup>State Key Laboratory of Crop Stress Biology in Arid Areas, College of Life Sciences, Northwest A and F University, Yangling, Shaanxi, China. <sup>2</sup>College of Life Sciences, Nankai University, Tianjin, China. <sup>3</sup>Institute of Urban Environment, Chinese Academy of Sciences, Xiamen, China. Correspondence and requests for materials should be addressed to G.W. (email: weigehong@nwsuaf.edu.cn)

cytoplasmic copper levels. CopA1b displayed 80% homology to CopA1a. However, a mutant of *copA1b* changed neither copper tolerance nor cytoplasmic copper accumulation. Rather, it changed the differentiation of the mutant strain into bacteroids, the number of viable bacteria (undifferentiated bacteria) in the *copA1b* mutant strain-induced nodules was increasing faster than differentiated bacteroids. The CopA2-like (FixI) ATPase in *S. meliloti* 2011, is encoded in an operon together with genes encoding cytochrome oxidase subunits. It has been proposed that FixI1 ATPase may be involved in respiration under microaerobiosis during symbiosis while FixI2 ATPase is required for respiration during all steps of bacterial life. CopA3 looks like a novel  $\text{Cu}^+$ -ATPase. Mutation of *copA3* gene did not lead to sensitivity to  $\text{Cu}^+$  or cytoplasmic copper accumulation in the mutant strain and the gene was regulated by redox stress and was required during symbiosis. The  $\text{P}_{1\text{B}-5}$  ATPase has not been well characterized. It was shown that *S. meliloti* 2011 Nia was induced by  $\text{Fe}^{2+}$  and  $\text{Ni}^{2+}$  and a *nia* mutant accumulated nickel and iron, suggesting a possible role in  $\text{Fe}^{2+}$  and  $\text{Ni}^{2+}$  detoxification<sup>17</sup>.

$\text{P}_{1\text{B}-2}$ -ATPases ( $\text{Zn}^{2+}/\text{Cd}^{2+}/\text{Pb}^{2+}$  transporter) are less studied in rhizobia but have been well characterized in other bacteria such as ZntA in *Escherichia coli* and CadA in *Staphylococcus aureus*. ZntA is not only for  $\text{Zn}^{2+}$  efflux but also transports the non-physiological substrates  $\text{Cd}^{2+}$  and  $\text{Pb}^{2+}$ <sup>13</sup>. The expression of the *zntA* gene is activated via the  $\text{Zn}^{2+}$ -responsive transcriptional regulator (ZntR)<sup>20</sup>. *CadA* is known to encode a  $\text{Cd}^{2+}$  efflux ATPase which plays a role in the cadmium resistance of *S. aureus*<sup>21</sup>. In *S. meliloti* 1021 the SMC04128 gene encodes a  $\text{P}_{1\text{B}-2}$ -type ATPase. A transposon insertion mutant of SMC04128 showed sensitivity to high concentrations of  $\text{Zn}^{2+}$  and  $\text{Cd}^{2+}$  and slightly increased sensitivities to  $\text{Cu}^{2+}$ ,  $\text{Pb}^{2+}$ ,  $\text{Ni}^{2+}$ , and  $\text{Co}^{2+}$ , which indicated that SMC04128 plays a role in the defense of *S. meliloti* 1021 against these heavy metals<sup>22</sup>. Moreover, it has been reported that a gene named *cadA* in *Mesorhizobium metallidurans* isolated from a zinc-rich mining soil also encodes a  $\text{P}_{1\text{B}-2}$ -type ATPase involved in cadmium and zinc resistance. The *cadA* gene was induced by zinc and cadmium and a *cadA*-deleted strain failed to grow at high zinc concentrations<sup>23</sup>.

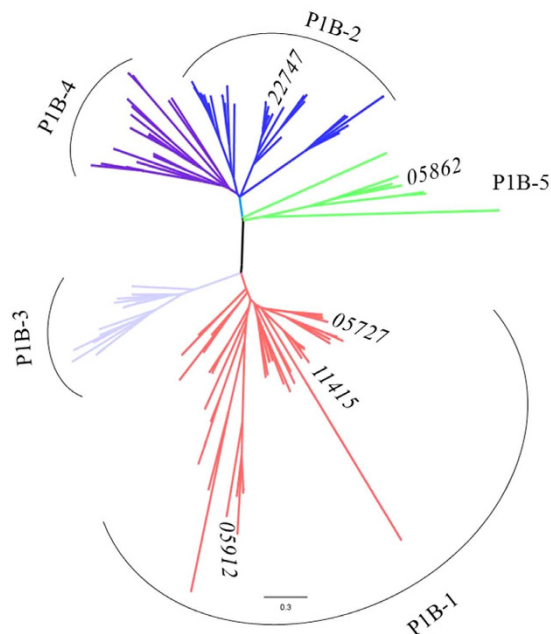
*Sinorhizobium meliloti* CCNWSX0020 was isolated from *Medicago lupulina* growing in gold mine tailings in the northwest of China and exhibited higher tolerance towards multiple metals, such as Cu, Zn, Cd and Pb. The heavy metal transporting  $\text{P}_{1\text{B}}$ -type ATPases is vital for heavy metal resistance. However, the role of  $\text{P}_{1\text{B}}$ -type ATPases in *S. meliloti* CCNWSX0020 remains unknown. There are five genes encoding putative  $\text{P}_{1\text{B}}$ -type ATPases on the *S. meliloti* CCNWSX0020 genome<sup>24</sup>. Their predicted signature transmembrane metal binding residues indicated that three genes encoded  $\text{P}_{1\text{B}-1}$ -ATPase (SM0020\_05727, SM0020\_05912 and SM0020\_11415), one (SM0020\_22747) encoded a  $\text{P}_{1\text{B}-2}$ -ATPase, another (SM0020\_05862) encoded a putative  $\text{P}_{1\text{B}-5}$ -ATPase. These five  $\text{P}_{1\text{B}}$ -ATPases are predicted to be mainly responsible for heavy metals homeostasis and detoxification in *S. meliloti* CCNWSX0020. To further investigate the function of these five  $\text{P}_{1\text{B}}$ -ATPases we created deletions in these genes and tested different metals tolerance of these deletions. Both deletion of SM0020\_11415 ( $\text{Cu}^+$ -ATPase) and deletion of SM0020\_22747 ( $\text{Zn}^{2+}$ -ATPase) displayed sensitivity to  $\text{Zn}^{2+}$ ,  $\text{Cd}^{2+}$  and  $\text{Pb}^{2+}$ . To test whether SM0020\_11415 and SM0020\_22747 in *S. meliloti* CCNWSX0020 have similar functions, we investigated these genes expressions in response to different levels of heavy metals exposure and their capability to complement the  $\Delta\text{copA}$  and  $\Delta\text{zntA}$  *E. coli* mutant strains. The combined results of these studies suggest that SM0020\_22747 encodes a classical  $\text{Zn}^{2+}$ -ATPase which is required for efflux of  $\text{Zn}^{2+}$ ,  $\text{Cd}^{2+}$  and  $\text{Pb}^{2+}$ , whereas SM0020\_11415 encoding a  $\text{Cu}^+$ -ATPase surprisingly confers tolerance to Zn, Cd and Pb but not to Cu in *S. meliloti* CCNWSX0020.

## Results

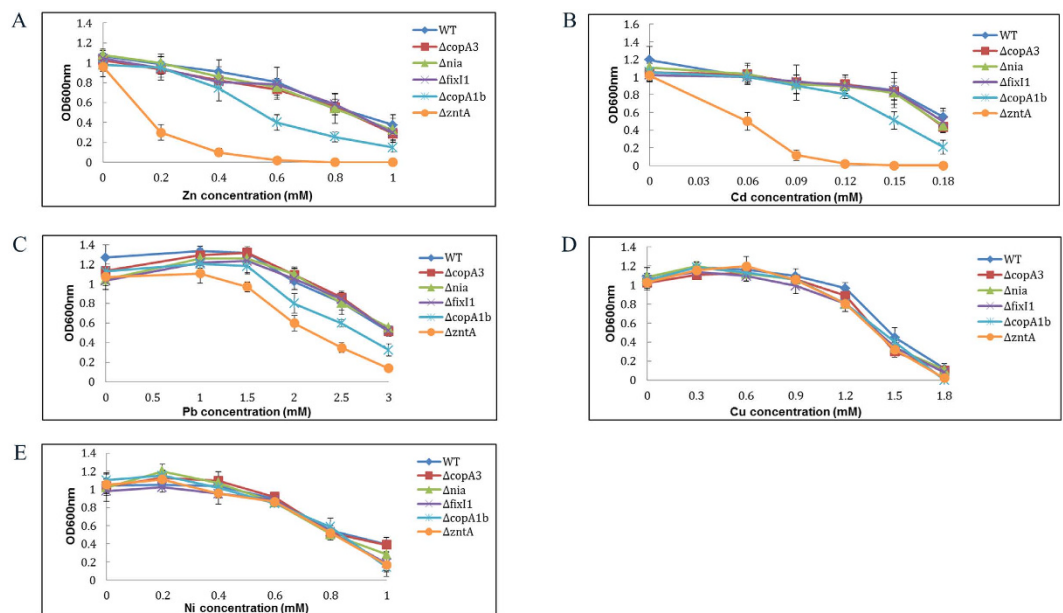
### Deletion of $\text{P}_{1\text{B}}$ -type ATPases made mutant strains more sensitive to a number of heavy metals.

Bioinformatics studies have shown that the genomes of many bacteria including *S. meliloti* contain a diverse array of genes encoding a number of  $\text{P}_{1\text{B}}$ -ATPases.  $\text{P}_{1\text{B}}$ -ATPases have been associated with the detoxification and tolerance mechanism of heavy and transition metals<sup>25</sup>. *S. meliloti* CCNWSX0020, could tolerate up to 1.4 mM  $\text{CuSO}_4$ , 1.0 mM  $\text{ZnSO}_4$ , 3.2 mM  $\text{Pb}(\text{NO}_3)_2$ , 0.25 mM  $\text{CdSO}_4$  and 1.0 mM  $\text{NiSO}_4$  in TY solid medium. A phylogenetic analysis of five predicted  $\text{P}_{1\text{B}}$ -type ATPases from *S. meliloti* CCNWSX0020 indicated three of them were  $\text{Cu}^+$ -ATPases, one was  $\text{Zn}^{2+}$ -ATPase and the last belongs to  $\text{P}_{1\text{B}-5}$ -type ATPase (Fig. 1). Furthermore, given the results of sequence homology analysis, the three  $\text{Cu}^+$ -ATPases genes (SM0020\_05727, SM0020\_05912 and SM0020\_11415) displayed the highest similarity with the *copA3*, *fixI1*, and *copA1b* genes which were previously identified in *S. meliloti* 2011<sup>19</sup>. The SM0020\_22747 gene was 99.1% identical to the *zntA* gene of *S. meliloti* 1021 while SM0020\_05862 showed 98% similarity to the *nia* gene that encoded a nickel (Ni) and Fe transporter in *S. meliloti* 2011<sup>17,22</sup>. We therefore selected all five  $\text{P}_{1\text{B}}$ -ATPases that involved in heavy metals resistance of *S. meliloti* CCNWSX0020. To test our hypotheses, the five  $\text{P}_{1\text{B}}$ -ATPase deletions ( $\Delta\text{copA1b}$ ,  $\Delta\text{copA3}$ ,  $\Delta\text{fixI1}$ ,  $\Delta\text{zntA}$ , and  $\Delta\text{nia}$ ) were characterized using metal-tolerance growth assays in TY liquid medium. The wild type strain and five deletion mutants were cultured in TY supplemented with increasing concentration of  $\text{CuSO}_4$ ,  $\text{ZnSO}_4$ ,  $\text{CdSO}_4$ ,  $\text{Pb}(\text{NO}_3)_2$  and  $\text{NiCl}_2$  (Fig. 2). The  $\Delta\text{zntA}$  mutant showed the greatest sensitivities to 0.2 mM  $\text{Zn}^{2+}$  and 0.05 mM  $\text{Cd}^{2+}$ , while  $\Delta\text{copA1b}$  mutant was slightly more sensitive to high concentration of  $\text{Zn}^{2+}$  (0.6 mM) and  $\text{Cd}^{2+}$  (0.15 mM) (Fig. 2A,B). Both  $\Delta\text{zntA}$  and  $\Delta\text{copA1b}$  mutants showed sensitivity to high concentration of  $\text{Pb}^{2+}$  in different degrees and had no effect on Cu and Ni tolerance (Fig. 2C–E). The  $\text{CuSO}_4$ ,  $\text{ZnSO}_4$ ,  $\text{CdSO}_4$ ,  $\text{Pb}(\text{NO}_3)_2$  and  $\text{NiCl}_2$  metals tolerance of the other three mutants ( $\Delta\text{copA3}$ ,  $\Delta\text{fixI1}$ , and  $\Delta\text{nia}$ ) displayed no difference to the wild type strain (Fig. 2). These results suggested CopA1b and ZntA were involved in Zn, Cd and Pb metals resistance in *S. meliloti* CCNWSX0020. To further explore the function of CopA1b and ZntA, these two zinc sensitive deletions were further studied.

**CopA1b and ZntA could play a role in zinc, cadmium and lead homeostasis.** The  $\Delta\text{copA1b}$  and  $\Delta\text{zntA}$  mutants of *S. meliloti* CNWSX0020 exhibited sensitivity to  $\text{Zn}^{2+}$ ,  $\text{Cd}^{2+}$  and  $\text{Pb}^{2+}$  but not to other metals, suggesting CopA1b and ZntA may play a role in Zn, Cd and Pb homeostasis in this strain. To verify the presence of the respective *copA1b* and *zntA* genes or either gene alone that was responsible for Zn, Cd and Pb resistance,

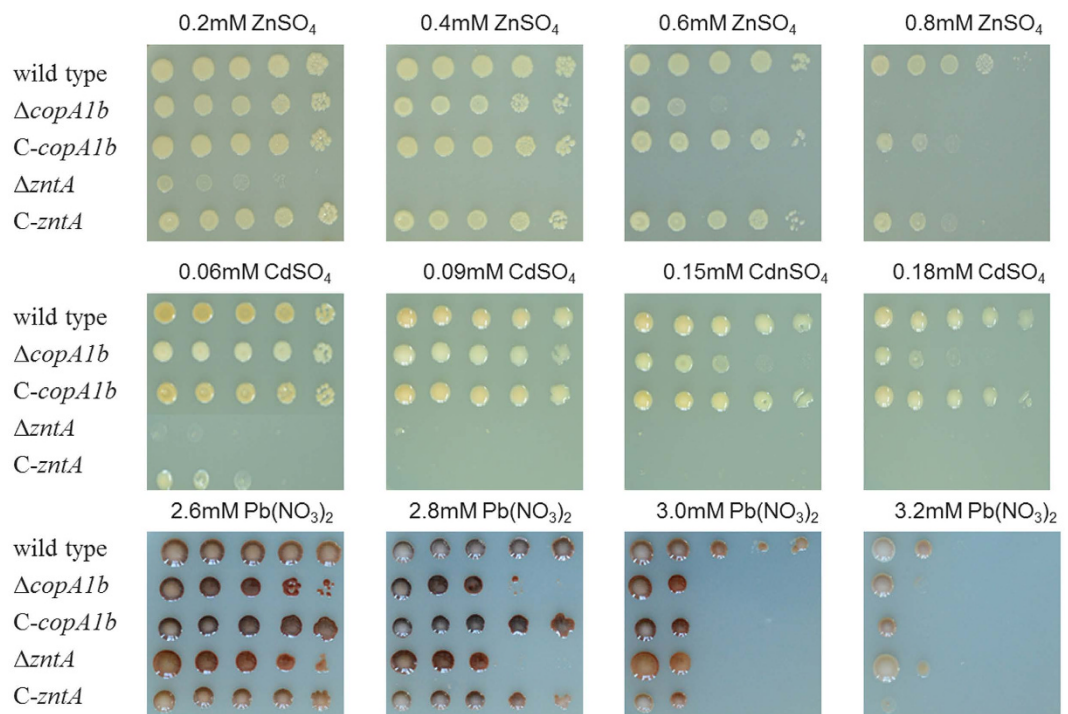


**Figure 1. Phylogenetic analysis of  $P_{1B}$ -type ATPases.** Branches indicating proteins in subgroups IB-1, IB-2, IB-3, IB-4 and IB-5 are under different colors. Five  $P_{1B}$ -type ATPases genes (*SM0020\_05727/copA3*, *SM0020\_05862/nia*, *SM0020\_05912/fixI1*, *SM0020\_11415/copA1b*, and *SM0020\_22747/zntA*) in *Sinorhizobium meliloti* CCNWSX0020 are tagged in the unrooted tree.

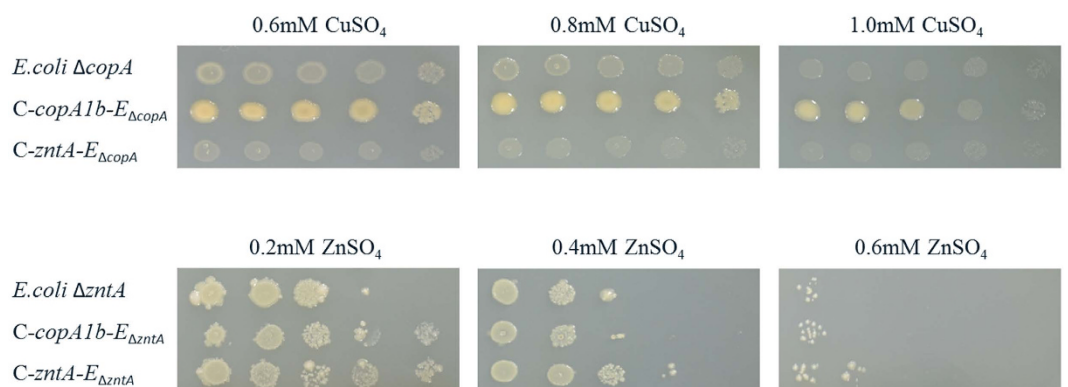


**Figure 2. Influence of deletions in genes encoding different  $P_{1B}$ -type ATPases on metal tolerance of *Sinorhizobium meliloti* CCNWSX0020.** Wild type and mutant strains were grown in TY liquid medium for 48 h in the presence of increasing concentrations of zinc (A), cadmium (B), lead (C), copper (D), and nickel (E). Symbols represent the wild type strain (WT) and mutants  $\Delta copA3$ ,  $\Delta nia$ ,  $\Delta fixI1$ ,  $\Delta copA1b$ , and  $\Delta zntA$  of *S. meliloti* CCNWSX0020 (◆, ■, ▲, ×, \*, ●, respectively). Error bars represent standard deviations of three biological repeats.

the two genes were amplified and inserted into the pBBR1MCS-5 vector and transformed into the corresponding mutant and then tested for these metals tolerance. Figure 3 shows the complemented strains (*C-copA1b* and *C-zntA*) could restore Zn, Cd and Pb resistance of the mutants by 80%. These results demonstrated that the sensitivity of three metals to the mutants was due to the deletion of *copA1b* and *zntA* in *S. meliloti* CCNWSX0020.

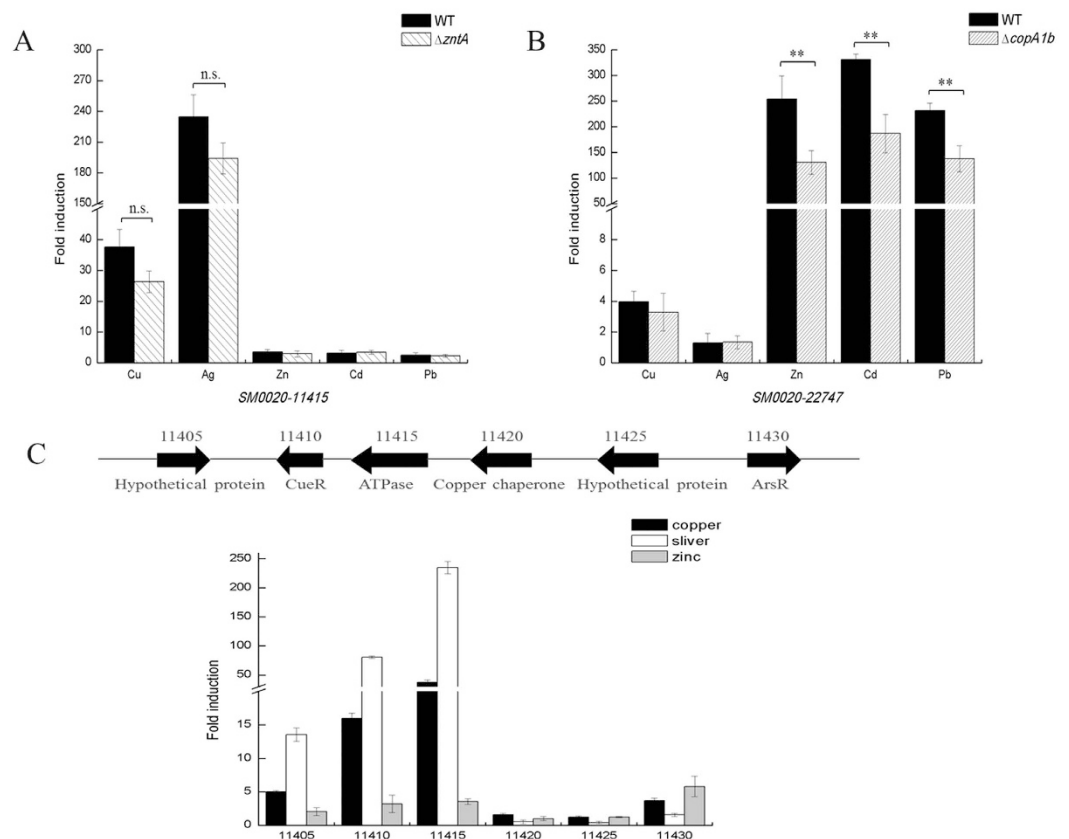


**Figure 3.** Growth in TY solid media of wild type, mutant strains ( $\Delta copA1b$  and  $\Delta zntA$ ) and complemented strains (*C-copA1b* and *C-zntA*) of *S. meliloti* CCNWSX0020. Five 10-fold dilutions were spotted from left to right, in the presence of the indicated concentrations of ZnSO<sub>4</sub>, CdSO<sub>4</sub> and Pb(NO<sub>3</sub>)<sub>2</sub>.



**Figure 4.** Complementation of  $\Delta copA$  *E. coli* copper sensitive phenotype and  $\Delta zntA$  *E. coli* zinc sensitive phenotype by heterologously expressed *S. meliloti* Cu<sup>+</sup>-ATPase (*C-copA1b*) and Zn<sup>2+</sup>-ATPase (*C-zntA*). All strains were grown to exponential phase in LB liquid medium. Five 10-fold dilutions were carried out and spotted on the LB agar plates from left to right, in the presence of the indicated concentrations of CuSO<sub>4</sub> and ZnSO<sub>4</sub>.

Thus we can speculate that *copA1b* and *zntA* genes are involved in Zn homeostasis and Cd or Pb detoxification. Surprisingly *zntA* encodes a Zn<sup>2+</sup>/Cd<sup>2+</sup>/Pb<sup>2+</sup> transporter whereas *copA1b* is predicted to encode a Cu<sup>+</sup>/Ag<sup>+</sup> transporter. A mutant containing a *zntA* deletion did not grow in the presence of low Zn levels as expected. In contrast, the growth of a mutant containing a *copA1b* deletion was not inhibited by high Cu levels but rather by high concentrations of Zn, Cd and Pb. To better understand the differences between the two genes in responsive to metals exposure, the capabilities of *S. meliloti* CopA1b and ZntA to complement the *E. coli*  $\Delta copA$  and  $\Delta zntA$  strains were tested. As expected, CopA1b could complement the Cu sensitive phenotype of *E. coli*  $\Delta copA$  strain while ZntA could complement the Zn sensitive phenotype of *E. coli*  $\Delta zntA$  strain. Meanwhile, CopA1b could restore Zn tolerance of an *E. coli*  $\Delta zntA$  strain to some degree whereas ZntA failed to restore Cu tolerance of an *E. coli*  $\Delta copA$  strain (Fig. 4). These results suggested that CopA1b and ZntA conferred resistance to Zn, Cd and Pb tolerance and CopA1b also had a capacity for Cu tolerance.

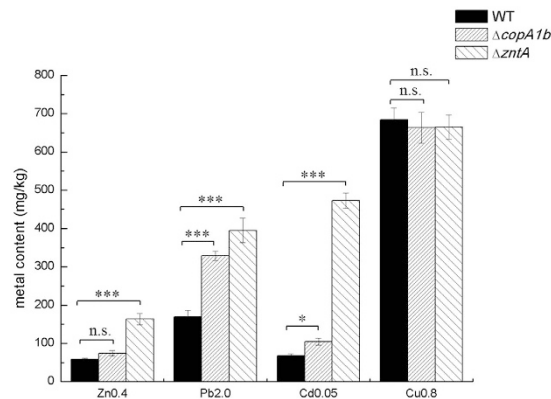


**Figure 5. Gene expression analysis.** Expression of *copA1b* (SM0020\_11415) and *zntA* (SM0020\_22747) under copper, silver, zinc, cadmium and lead stress (A,B). (C) Expression of genes in the vicinity of *copA1b* (SM0020\_11415) under copper, silver and zinc stress. Wild type,  $\Delta copA1b$ , and  $\Delta zntA$  mutants of *S. meliloti* CCNWSX0020 strains at OD<sub>600</sub> of 1.0 were incubated with 0.6 mM CuSO<sub>4</sub>, 0.05 mM AgNO<sub>3</sub>, 0.4 mM ZnSO<sub>4</sub>, 0.1 mM CdSO<sub>4</sub> and 1.5 mM Pb(NO<sub>3</sub>)<sub>2</sub> for 30 min. Samples were then processed for qPCR analysis and normalized against the ribosomal 16S rRNA. Error bars represent standard deviations of three biological repeats. \*\**P* < 0.01.

**Expression of *copA1b* and *zntA* could be induced by different types of heavy metals.** To further investigate CopA1b and ZntA in *S. meliloti* CCNWSX0020, the gene expressions of *zntA* and *copA1b* under different metal stresses were examined using qRT-PCR. The expression profiles of *copA1b* and *zntA* genes in wild type,  $\Delta copA1b$  and  $\Delta zntA$  mutants in response to Cu, Ag, Zn, Cd and Pb showed some unexpected results. The expression of *copA1b* was strongly up-regulated by Ag (234-fold) and Cu (37-fold) exposure respectively (Fig. 5A), while the expression of *zntA* was significantly induced by Zn (254-fold), Cd (330-fold) and Pb (231-fold) respectively (Fig. 5B). In addition, a deletion of *copA1b* significantly inhibited *zntA* gene expression by nearly 50% (*P* < 0.01) compared to the wild type strain in response to the above three metals (Fig. 5B). These observations implied that ZntA was a typical Zn<sup>2+</sup>/Cd<sup>2+</sup>/Pb<sup>2+</sup> transporter, whereas CopA1b contribute to Zn, Cd and Pb tolerance as a classical Cu<sup>+</sup>-ATPase but not contribute to Cu tolerance of *S. meliloti* CCNWSX0020.

Since  $\Delta copA1b$  strain had an unexpected phenotype further studies of the genetic region in the vicinity of *copA1b* were performed. SM0020\_11410 gene locus was located directly upstream of *copA1b* (SM0020\_11415) and predicted to be in an operon with *copA1b*. SM0020\_11410 encodes a transcriptional regulator which is highly homologous with CueR belonging to the MerR family<sup>26</sup>. CueR is copper sensor and induces the expression of the Cu<sup>+</sup>-translocating P-type ATPase CopA in response to Cu<sup>+</sup>, Ag<sup>+</sup> or Au<sup>+</sup><sup>27,28</sup>. The *copA1b* promoter contains a 7-7 bp inverted repeat (ACCTCC-CATTATTT-GGAAGGA) between -35 and -10 similar to the *E. coli copA* promoter. This predicted gene SM0020\_11410 product might bind to the inverted repeat sequence and activate *copA1b* gene expression in the presence of Cu and Ag as a homolog of CueR. Figure 5C showed that SM0020\_11410 displayed a 15-, 130-, 4-fold induction by Cu<sup>+</sup>, Ag<sup>+</sup> and Zn<sup>2+</sup>, respectively. A deletion of SM0020\_11410 led to a slight sensitivity to Cu and suppressed the SM0020\_11415 gene expression (data not shown), suggesting that SM0020\_11410 really regulated the expression of *copA1b* (SM0020\_11415).

There are some other genes in the vicinity of *copA1b* (SM0020\_11415) that may also be part of this operon. SM0020\_11405 and SM0020\_11425 both encode unknown proteins, SM0020\_11420 encodes a potential periplasmic copper chaperone and SM0020\_11430 encodes an ArsR family transcriptional regulator. These genes in the vicinity of *copA1b* might work together against heavy metal stress. The expression of the SM0020\_11405



**Figure 6. Analysis of intracellular metal concentrations in the wild type and two zinc sensitive mutants of *S. meliloti* CCNWSX0020.** The wild type strain,  $\Delta copA1b$ , and  $\Delta zntA$  mutant strains were cultured in the presence of 0.4 mM  $ZnSO_4$ , 2.0 mM  $Pb(NO_3)_2$ , 0.05 mM  $CdSO_4$  and 0.8 mM  $CuSO_4$ . Cells were harvested and washed with metal-free buffer, then were dried at 65 °C and total internal metal concentrations were measured by atomic absorption spectrophotometer. Error bars represent standard deviations of three biological repeats. \* $P < 0.05$ , \*\*\* $P < 0.001$ .

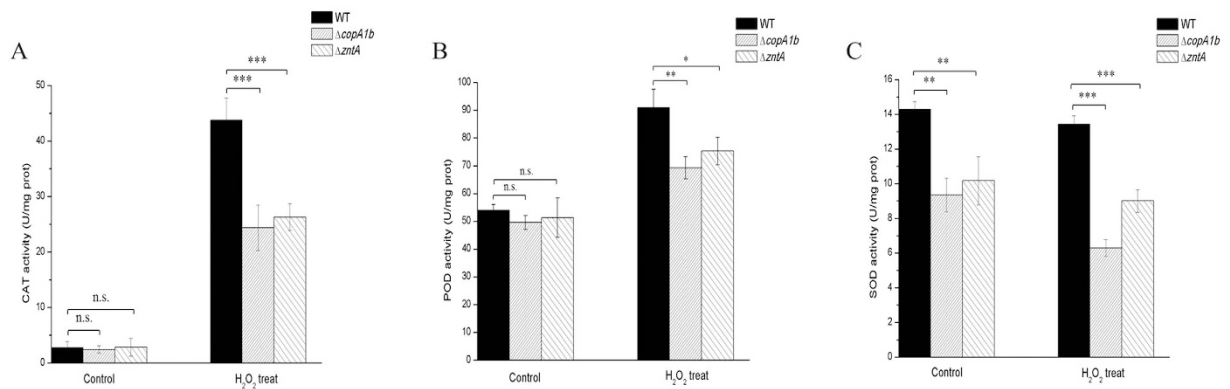
(unknown protein) was inducible by  $Ag^+$  and  $Cu^+$ , whereas *SM0020\_11430* (ArsR family) was inducible by  $Cu^+$  and  $Zn^{2+}$ . In addition, the gene expression level of *SM0020\_11420* (copper chaperone) and *SM0020\_11425* (unknown protein) was very low under Cu, Ag and Zn stress (Fig. 5C).

**Deletions of *copA1b* and *zntA* led to increased intracellular concentrations of zinc, lead and cadmium but not copper.** A possible explanation for the sensitivity of  $\Delta copA1b$  and  $\Delta zntA$  mutants toward Zn, Cd and Pb is that higher levels of these metal ions were accumulated in the mutant cells. This would imply that CopA1b and ZntA play roles in expelling these surplus metals from cytoplasm. To test this hypothesis, total internal metal content of wild type and mutant cells were measured by furnace atomic absorption spectroscopy (AAS). The cells were grown in TY medium individually supplemented with 0.4 mM  $ZnSO_4$ , 2.0 mM  $Pb(NO_3)_2$ , 0.05 mM  $CdSO_4$  and 0.8 mM  $CuSO_4$ . The  $\Delta zntA$  mutant which was hypersensitive to Zn and Cd accrued significantly ( $P < 0.01$ ) higher amounts of intracellular Zn (~3 fold), Cd (~8 fold) and Pb (~2.5 fold) compared with the WT (Fig. 6). The  $\Delta copA1b$  mutant had a smaller but significant effect on the metal content since the loss of *copA1b* led to an increased accumulation of Zn by 1 fold, Cd by 1.5 fold ( $P < 0.05$ ) and Pb by 2 fold ( $P < 0.01$ ) relative to the WT (Fig. 6). The increase in the accumulation of Zn, Cd and Pb in the  $\Delta copA1b$  and  $\Delta zntA$  mutants suggested that CopA1b and ZntA play a role in the efflux of  $Zn^{2+}$ ,  $Cd^{2+}$  and  $Pb^{2+}$  ions. In addition, the accumulation of intracellular Cu was quite high in the  $\Delta copA1b$  and  $\Delta zntA$  mutants as well as in the WT strain (Fig. 6). This result demonstrated that CopA1b was not involved in Cu export and *S. meliloti* CCNWSX0020 accumulates high levels of intracellular Cu.

**Deletions of *copA1b* and *zntA* decreased antioxidant enzyme activity.**  $P_{1B}$ -ATPases also have a function in providing metals for assembly of periplasmic metalloproteins since some heavy and transition metals are essential component of many free-radical detoxifying enzymes, like catalase, peroxidase and superoxide dismutase<sup>29,30</sup>. So the capability of  $\Delta copA1b$  and  $\Delta zntA$  to cope with redox stress was tested. Although the  $H_2O_2$  resistance on the agar plates of  $\Delta copA1b$  and  $\Delta zntA$  mutants showed no big change with *S. meliloti* wild type strain (data not shown), the CAT, POD and total SOD activities were dramatically changed. When all three strains were treated with  $H_2O_2$ , the CAT and POD activities increased obviously while the total SOD activity displayed no change (Fig. 7). However, compared to *S. meliloti* wild type strain, the CAT and POD activity levels of  $\Delta copA1b$  and  $\Delta zntA$  mutants showed apparent decline to a different degree under  $H_2O_2$  treatment condition whereas the enzyme activities showed no major differences under  $H_2O_2$ -free condition (Fig. 7A,B). The total SOD activity of  $\Delta copA1b$  and  $\Delta zntA$  mutants also decreased slightly in comparison to a wild type strain whether under  $H_2O_2$  treatment or not (Fig. 7C). These results suggest that deletions of CopA1b and ZntA have an influence on the activity levels of these antioxidant enzymes.

## Discussion

*Sinorhizobium meliloti* CCNWSX0020 is a multiple heavy metals resistant bacterium isolated from root nodules of *M. lupulina* growing on mine tailings in the northwest of China<sup>31</sup>. The genome of *S. meliloti* CCNWSX0020 has been sequenced and some copper resistance genes have been analyzed in the previous studies<sup>24,32,33</sup>. It has been reported that *merR* encoding an MerR family transcriptional regulator displayed significantly decreased copper resistance in a *merR*-interrupted mutant of *S. meliloti* CCNWSX0020 and the expression of two genes (*SM0020\_05727* and *SM0020\_05862*) encoding putative  $P_{1B}$ -type ATPases were found to be down-regulated under  $Cu^+/Zn^{2+}/Pb^{2+}/Cd^{2+}$  stresses in this *merR* mutant<sup>32</sup>. These results suggested that the  $P_{1B}$ -type ATPases might be involved in heavy metal resistance of *S. meliloti* CCNWSX0020. To test this hypothesis, the five  $P_{1B}$ -type ATPases in *S. meliloti* CCNWSX0020 were further studied. The phylogenetic analysis of these  $P_{1B}$ -type ATPases



**Figure 7.** The effect of deletions of *copA1b* and *zntA* on the antioxidant activities of CAT (A), POD (B) and SOD (C) under H<sub>2</sub>O<sub>2</sub> stress. The wild type strain,  $\Delta copA1b$  and  $\Delta zntA$  mutant strains were cultured to exponential phase and then treated or untreated with 500  $\mu$ M H<sub>2</sub>O<sub>2</sub> for 30 min. Cells were harvested and crude bacterial lysates were subsequently prepared for spectrophotometric analyses. Error bars represent standard deviations of three biological repeats. \* $P < 0.05$ , \*\* $P < 0.01$ , \*\*\* $P < 0.001$ .

suggested that three of them are predicted to be Cu<sup>+</sup>-ATPase, one to be a Zn<sup>2+</sup>-ATPase and the last one to be a P<sub>1B-5</sub>-type ATPase which may be a Ni<sup>2+</sup>-ATPase.

According to the analysis of deletion mutants the five genes encoding P<sub>1B</sub>-type ATPases obtained upon double homologous recombination, a  $\Delta zntA$  mutant was shown to be hypersensitive to low concentrations of Zn and Cd compared to other mutants and the wild type, indicating the vital role of ZntA in Zn and Cd resistance in *S. meliloti* CCNWSX0020. As pointed out in previous studies, ZntA in *S. meliloti* CCNWSX0020 contains a conserved phosphorylation motif (DKTGT), a CXXC (CASC) motif in N terminal and typical conserved residues of P<sub>1B-2</sub> ATPases in trans-membrane<sup>8</sup> helices including a CPC motif in TM6, a T(X)<sub>5</sub>Q(X)<sub>7</sub>K motif in TM7 and a DXG(X)<sub>7</sub>N motif in TM8 (see Supplementary Fig. S1)<sup>9,34</sup>. The well-characterized ZntA from *E. coli* mediates the efflux of Zn<sup>2+</sup>, Cd<sup>2+</sup> and Pb<sup>2+</sup><sup>13</sup>. Amino acid alignment of ZntA from *S. meliloti* CCNWSX0020 showed 98.04% identity to the SMc04128-encoded P<sub>1B-2</sub>-type ATPase in *S. meliloti* 1021 which plays a crucial role in the defense of *S. meliloti* against high concentrations of Zn and Cd<sup>22</sup>. The *S. meliloti* CCNWSX0020  $\Delta zntA$  mutant is highly sensitive to low concentration of Zn and Cd but only slightly sensitive to high concentration of Pb, suggesting that ZntA in *S. meliloti* CCNWSX0020 is essential to the resistance against these metal ions. RT-PCR showed that the expression of *zntA* in *S. meliloti* CCNWSX0020 was induced by heavy metals with the following order of effectiveness: Cd<sup>2+</sup> > Zn<sup>2+</sup> > Pb<sup>2+</sup>. In addition, a *S. meliloti* CCNWSX0020  $\Delta zntA$  mutant displayed an increased intracellular accumulation of Zn, Pb and Cd. These results strongly suggest ZntA in *S. meliloti* CCNWSX0020 to be a typical Zn<sup>2+</sup>-ATPase having a crucial role in the efflux of Zn, Cd and Pb.

Previous studies have reported the presence of five Cu<sup>+</sup>-ATPase genes on the *S. meliloti* 2011 genome and analyzed the functional diversity of these five homologous Cu<sup>+</sup>-ATPases<sup>19</sup>. The authors divided these five Cu<sup>+</sup>-ATPases into three subgroups including CopA1-like ATPases (CopA1a and CopA1b), CopA2-like ATPases (FixI1 and FixI2) and CopA3-like ATPases. Based on sequence alignment, three genes (*SM0020\_05727*, *SM0020\_05912* and *SM0020\_11415*) encoding Cu<sup>+</sup>-ATPases on the *S. meliloti* CCNWSX0020 genome were very similar to CopA3, FixI1 and CopA1b, respectively. The deletions of putative Cu<sup>+</sup>-ATPases ( $\Delta copA1b$ ,  $\Delta copA3$  and  $\Delta fixI1$ ) had no effect on Cu resistance in agreement with results obtained from mutants of the genes encoding homologous Cu<sup>+</sup>-ATPases in *S. meliloti* 2011. However, one important difference from *S. meliloti* 2011 was that a  $\Delta copA1b$  deletion in *S. meliloti* CCNWSX0020 displayed sensitivity to high concentrations of Zn, Cd and Pb. In addition, we could not identify a typical Cu<sup>+</sup>-translocating P<sub>1B</sub>-ATPase such as CopA1a in *S. meliloti* 2011 on the genome of *S. meliloti* CCNWSX0020. Moreover, cells of *S. meliloti* CCNWSX0020 accumulated quite high amounts of Cu in both the wild type strain and the different mutant strains. This could indicate that copper resistance in *S. meliloti* CCNWSX0020 is not due to efflux but rather increased copper binding in cells most likely in the periplasm.

Based on sequence alignment, *S. meliloti* CCNWSX0020 CopA1b was predicted to be a Cu<sup>+</sup>-translocating P<sub>1B</sub>-ATPases and CueR located upstream of *copA1b* was responsible for Cu and Ag-dependent induction of *copA1b* expression. Moreover, *copA1b* could confer copper tolerance to a copper sensitive *E. coli*  $\Delta copA$  strain (Fig. 4). These results suggested that CopA1b itself has a capability for copper tolerance and/or efflux. However,  $\Delta copA1b$  mutant in *S. meliloti* CCNWSX0020 did not lead to copper sensitivity or increased copper accumulation. Perhaps the lack of copper sensitive phenotype in the  $\Delta copA1b$  mutant was masked by functional redundancy with other copper transporters or copper resistance determinants. Based on a previous study in *S. meliloti* CCNWSX0020, some genes responsible for copper homeostasis could be identified. These genes include *lpxXL* (*SM0020\_18047*) encoding the LpxXL C-28 acyltransferase, *omp* (*SM0020\_18792*) encoding a hypothetical outer membrane protein, *cueO* (*SM0020\_18797*) encoding a periplasmic multicopper oxidase, and *merR* (*SM0020\_29390*) encoding a regulatory activator<sup>32</sup>. Therefore, we compared expression of these four genes with expression of the genes encoding these three Cu<sup>+</sup>-ATPase (*SM20020\_05727/copA3*, *SM0020\_05912/fixI1*, *SM0020\_11415/copA1b*) under Cu stress. The data showed that *omp* and *cueO* were highly induced by Cu to

646- and 243-fold, respectively (see Supplementary Fig. S2). Previous study showed that the *omp* mutant was hypersensitive to Cu<sup>33</sup> and our data showed *omp* was highly induced by Cu, revealing *Omp* to play a crucial role in the copper resistance mechanism of *S. meliloti* CCNWSX0020. In addition, the capability of *S. meliloti* CopA3 to complement the *E. coli*  $\Delta$ *copA* strain was also tested. The result showed that the CopA3 did not restore copper tolerance of *E. coli*  $\Delta$ *copA*, indicating there is no functional redundancy of CopA3 with CopA1b (data not shown).

The  $\Delta$ *copA1b* mutant was sensitive to Zn, Cd and Pb, and led to increased intracellular Zn, Cd and Pb concentrations, demonstrating that although *copA1b* in *S. meliloti* CCNWSX0020 is predicted to encode a Cu<sup>+</sup>-ATPase, it is involved in Zn, Cd and Pb homeostasis. Previous studies have reported that P<sub>1B</sub>-ATPases have a high specificity for substrate they transport, for example Cu<sup>+</sup>-ATPase transports monovalent heavy metal ions (Cu<sup>+</sup>, Ag<sup>+</sup>) and Zn<sup>2+</sup>-ATPase transports divalent heavy metal ions (Zn<sup>2+</sup>, Cd<sup>2+</sup>)<sup>9,10</sup>. Sequence comparisons and functional characterization have underlined the importance of the difference between Cu<sup>+</sup>-ATPases and Zn<sup>2+</sup>-ATPases in the presence of unique and conserved trans-membrane amino acid residues which could contribute to substrate specificity, such as Tyr/Asn of TM7, Pro/Met/Ser of TM8 in Cu<sup>+</sup>-ATPase while Leu/Lys of TM7, and Asp/Val/Ala of TM8 in Zn<sup>2+</sup>-ATPase<sup>34–36</sup>. Furthermore, in agreement with most Cu<sup>+</sup>-ATPases, CopA1b in *S. meliloti* CCNWSX0020 contains two CXXC(CASC) motifs in the N terminal and typical conserved residues of P<sub>1B-1</sub> ATPases in trans-membrane helices including a CPC motif in TM6, a YN(X)<sub>4</sub>P motif in TM7, a MXXSS motif in TM8 (see Supplementary Fig. S1)<sup>9,34</sup>. It is probable that the presence of the same N-terminal CASC motif in CopA1b and ZntA in *S. meliloti* CCNWSX0020 could bind Zn<sup>2+</sup>/Cd<sup>2+</sup>/Pb<sup>2+</sup> ions. However, the function of the N-terminal CXXC motif in P<sub>1B</sub>-type ATPase remains controversial, as two N-terminal CXXC motifs in *E. coli* CopA have distinct functions (the MBD1 functions as metallochaperones and the MBD2 has a regulatory role in CopA activity)<sup>37</sup> while CXXC motif in *Streptococcus pneumoniae* CopA is able to bind a dicopper center and might be responsible for delivery of Cu<sup>+</sup> to the TM metal-binding sites<sup>38</sup>. To study the function of N-terminal CXXC motif of CopA1b and ZntA in *S. meliloti* CCNWSX0020, we constructed these two N-terminal deletions. The results showed that the *zntA* N-terminal deletion was slightly sensitive to high zinc concentration while *copA1b* N-terminal deletion did not affect copper and zinc tolerance in *S. meliloti*, and that neither N-terminal deletions of CopA1b nor ZntA could restore copper or zinc tolerance of *E. coli*  $\Delta$ *copA* and  $\Delta$ *zntA* mutant strains (data not shown). These indicate that the presence of N-terminal domain of CopA1b and ZntA is essential for their complete transportation function. In addition, the *S. meliloti* CopA1b confers a slight increase in zinc tolerance of *E. coli*  $\Delta$ *zntA* mutant (Fig. 4). Therefore, it is very possible that the similar N-terminal domain of CopA1b to ZntA could bind Zn<sup>2+</sup>/Cd<sup>2+</sup>/Pb<sup>2+</sup> ions but these metal ions binding by CopA1b N-terminal domain is not essential for cellular Zn<sup>2+</sup>/Cd<sup>2+</sup>/Pb<sup>2+</sup> resistance, just played a primary role in cytoplasmic Zn<sup>2+</sup>/Cd<sup>2+</sup>/Pb<sup>2+</sup> sequestration or delivery to the transmembrane site of CopA1b for cellular efflux. Notably, similar to *copA1b*, SMC04128 gene in *S. meliloti* 1021 encoded a Zn<sup>2+</sup>-ATPase and transposon insertion mutant of SMC04128 was not only highly sensitive to Zn<sup>2+</sup> and Cd<sup>2+</sup> but also slightly increased sensitivities to Cu<sup>2+</sup>, Pb<sup>2+</sup>, Ni<sup>2+</sup> and Co<sup>2+</sup><sup>22</sup>. This phenomenon has attracted our attention and it is likely that Cu<sup>+</sup>-ATPase and Zn<sup>2+</sup>-ATPase in *S. meliloti* might not have strict specificity for the heavy and transition metal ions they transport.

Moreover, P<sub>1B-1</sub>-ATPases were also shown to be involved in protein maturation and delivering metal cofactors into metalloenzymes<sup>39,40</sup>. Previous work demonstrated that both functions are important for bacterial virulence<sup>25,41</sup>. A novel host immune defense against bacterial invaders was identified and involved intoxication by transition metals (such as copper and zinc) in the phagosome to kill bacteria<sup>42–44</sup>. This mechanism could also be identified in response to protozoa<sup>45</sup>. P<sub>1B</sub>-ATPases in bacteria are required for transition metal efflux and assembly of metalloproteins which are essential for bacterial survival in extreme oxidative environments<sup>46</sup>. So we speculate that although CopA1b in *S. meliloti* CCNWSX0020 is not responsible for copper tolerance, it may incorporate copper into metalloenzymes (such as Cu/Zn-SOD) that protect against metal or oxidative stress. In line with our speculation, the deletion of *copA1b* led to a decrease in CAT, POD and total SOD activity level (Fig. 7), so a *copA1b* deletion could result in sensitivity to high concentration of Zn, since  $\Delta$ *copA1b* mutant might lack enough capability to cope with the oxidative stress caused by high Zn. However, Cu and Zn usually served as cofactor for Cu/Zn-SOD not for CAT and POD, but the deletions of *copA1b* and *zntA* also decreased the CAT and POD activity levels. It is speculated that the reduced CAT and POD activity might result from the periplasmic metal disturbances caused by deletions of *copA1b* and *zntA*.

In conclusion, in *S. meliloti* CCNWSX0020 ZntA is a typical Zn<sup>2+</sup>-ATPase playing a crucial role in the efflux of Zn, Cd, and Pb while *copA1b* encoding a Cu<sup>+</sup>-ATPase is involved in tolerance to Zn, Cd, and Pb. Moreover, both of CopA1b and ZntA are potentially being involved in assembly and maturation of metalloenzymes crucial for tolerance to heavy metal and oxidative stress.

## Materials and Methods

**Bacterial strains, plasmids and culture conditions.** All bacterial strains and plasmids used in this study are listed in Table 1. *Escherichia coli* strains (*E. coli* DH5 $\alpha$ , *E. coli* GR16 and *E. coli* RW3110) were grown in Luria-Bertani (LB) medium at 37 °C. *Sinorhizobium meliloti* CCNWSX0020 was grown at 28 °C in TY medium (5 g tryptone, 3 g yeast extract, and 0.7 g CaCl<sub>2</sub>·2H<sub>2</sub>O per liter)<sup>47</sup>. Media were supplemented with the following antibiotics as required: 100  $\mu$ g/mL ampicillin (Amp), 50  $\mu$ g/mL kanamycin (Km), 100  $\mu$ g/mL gentamicin (Gm) (Table 1).

**Bioinformatic analysis.** The known P<sub>1B</sub>-ATPase protein sequences of most bacterial genomes used in our study were obtained from UniProtKB (<http://www.uniprot.org/uniprot/>)<sup>48</sup>. The whole set of bacterial P<sub>1B</sub>-ATPase sequences were aligned using ClustalW<sup>249</sup> and the phylogenetic tree visualized with FigTree (<http://tree.bio.ed.ac.uk/software/figtree/>). The neighboring genes of the genes encoding P<sub>1B</sub>-ATPases were obtained from the draft genome sequence of *S. meliloti* CCNWSX0020 which had been reported with the accession number AGVV00000000.1 in GenBank<sup>24</sup>.



Strains or plasmids	Relevant characteristics	Source or reference
Strains		
<i>S. meliloti</i> CCNWSX0020	Wild-type strain, Nod <sup>+</sup> on <i>Medicago lupulina</i> , Amp <sup>r</sup>	This work
$\Delta copA1b$	<i>copA1b</i> deleted in <i>S. meliloti</i> CCNWSX0020	This work
$\Delta copA3$	<i>copA3</i> deleted in <i>S. meliloti</i> CCNWSX0020	This work
$\Delta fixI1$	<i>fixI1</i> deleted in <i>S. meliloti</i> CCNWSX0020	This work
$\Delta zntA$	<i>zntA</i> deleted in <i>S. meliloti</i> CCNWSX0020	This work
$\Delta nia$	<i>nia</i> deleted in <i>S. meliloti</i> CCNWSX0020	This work
$\Delta cueR$	<i>cueR</i> deleted in <i>S. meliloti</i> CCNWSX0020	This work
$\Delta N-copA1b$	N-terminal domain of CopA1b deleted in <i>S. meliloti</i> CCNWSX0020	This work
$\Delta N-zntA$	N-terminal domain of ZntA deleted in <i>S. meliloti</i> CCNWSX0020	This work
<i>E. coli</i> DH5 $\alpha$	<i>lacZ</i> $\Delta$ M15 <i>recA1</i> <i>gyrA96</i> <i>hdsR17</i>	58
<i>E. coli</i> GR16	Copper sensitive <i>E. coli</i> W3110; $\Delta copA::Km$ , $\Delta cueO::Cm$ , $\Delta cusA::cm$	59
<i>E. coli</i> RW3110	Zinc sensitive <i>E. coli</i> W3110; $\Delta zntA::Km$	14
Plasmids		
pK18mobsacB	Suicide vector derived from plasmid pK18, Mob <sup>+</sup> <i>sacB</i> Km <sup>r</sup>	51
pBBR1MCS-5	Broad-host-range cloning vector, Gm <sup>r</sup>	60
pRK2013	Broad-host-range helper vector, Tra <sup>+</sup> Km <sup>r</sup>	University of York, UK, Tanya Soule
pMD18-T easy	Cloning and sequencing vector, Amp <sup>r</sup>	TaKaRa

**Table 1. Bacterial strains and plasmids used in this study.**

**Generation of deletion mutants in genes encoding P<sub>1B</sub>-type ATPases.** An in-frame, tagged P<sub>1B</sub>-ATPase deletion mutant of *S. meliloti* CCNWSX0020 was constructed by a method involving crossover PCR<sup>50</sup> and the suicide vector pK18mobsacB, which cannot replicate in *S. meliloti* CCNWSX0020<sup>51</sup>. The total genomic DNA of *S. meliloti* CCNWSX0020 was extracted according to the protocol of Wilson and Carson<sup>52</sup>. The plasmid pK18mobsacB- $\Delta copA1b$  was used to construct the *S. meliloti* CCNWSX0020 *copA1b* deletion mutant. A 683 bp upstream and a 655 bp downstream fragment of *copA1b* were amplified using primer pairs *copA1b*-F1/*copA1b*-R1 and *copA1b*-F2/*copA1b*-R2, respectively. The upstream and downstream PCR products were ligated by crossover PCR with primer pairs *copA1b*-F1/*copA1b*-R2. The resulting fragment was cloned into pMD18-T vector (TaKaRa) that introduces *Xba*I/*Hind*III sites generating vector pMD18- $\Delta copA1b$ . The plasmid pMD18- $\Delta copA1b$  was digested with *Xba*I and *Hind*III and the  $\Delta copA1b$  fragment was inserted into the *Xba*I/*Hind*III site of the suicide vector pK18mobsacB to produce pK18- $\Delta copA1b$ . The plasmid pK18- $\Delta fixI1$ , pK18- $\Delta copA3$ , pK18- $\Delta zntA$ , pK18- $\Delta nia$  were constructed in a similar manner and all primers used in this study are listed in Table S1.

The deletion was obtained through double homologous recombination. In the first step, the generated plasmid pK18- $\Delta copA1b$  was transferred into *S. meliloti* CCNWSX0020 by triparental mating which included *S. meliloti* CCNWSX0020 (Amp<sup>r</sup>) as the recipient, *E. coli* DH5 $\alpha$  cells containing pK18- $\Delta copA1b$  (Km<sup>r</sup>) as the donor, and *E. coli* DH5 $\alpha$  cells containing pRK2013 as helper cells. The selective SM agar medium (0.2 g MgSO<sub>4</sub>·7 H<sub>2</sub>O, 0.1 g CaCl<sub>2</sub>, 0.5 g KNO<sub>3</sub>, 0.5 g K<sub>2</sub>HPO<sub>4</sub>, 0.1 g NaCl, 10 g mannitol, 75 mg pantothenic acid, 75 mg biotin, 75 mg thiamine, and 15 g agar per liter)<sup>53</sup> with kanamycin and ampicillin was used for screening the first recombination events. Since pK18- $\Delta copA1b$  is unable to replicate in *S. meliloti* CCNWSX0020, kanamycin-resistant clones should have integrated the plasmid into the chromosome by homologous recombination via one of the *copA1b* flanking regions. In addition *S. meliloti* CCNWSX0020 contains ampicillin resistance whereas *E. coli* could not grow in SM medium. In the second step to select for a second recombination event, clones resistant to both kanamycin and ampicillin were grown in TY liquid medium with ampicillin for 24 h and plated onto TY plates containing 10% (w/v) sucrose. As 10% sucrose was lethal to single crossover clone, sucrose-resistant clones must be the wild type strain or the deletion mutant by a second crossover event. Double crossover recombinants were confirmed by PCR using *copA1b*-F1 and *copA1b*-R2 as primers. Finally, the correct PCR product was sequenced.

Other tagged P<sub>1B</sub>-ATPase deletion mutants of *S. meliloti* CCNWSX0020 were constructed in the similar manner as described above for the *copA1b* deletion mutant. The resulting strains were designated as  $\Delta copA1b$ ,  $\Delta fixI1$ ,  $\Delta copA3$ ,  $\Delta zntA$  and  $\Delta nia$  (Table 1).

**Heavy and transition metal sensitivity assays of the five mutants.** *Sinorhizobium meliloti* CCNWSX0020 and each of the five deletion mutants were grown to midexponential phase in TY liquid medium at 28 °C with shaking at 150 rpm and cell suspensions were prepared at the same OD<sub>600</sub> of 1.0 (optical density at 600 nm). Then 1% of the cell suspensions were added to fresh TY medium supplemented with different concentration of CuSO<sub>4</sub>, ZnSO<sub>4</sub>, CdSO<sub>4</sub>, NiCl<sub>2</sub>, and Pb(NO<sub>3</sub>)<sub>2</sub>. The cells were again incubated with shaking at 150 rpm for 48 h, and growth was monitored at OD<sub>600</sub>. The data were shown as the means of biological triplicates  $\pm$  SD.

**Complementation of  $\Delta copA1b$  and  $\Delta zntA$  mutants.** To complement the *copA1b* mutant, the entire *copA1b* gene including the regulatory region was amplified with primers C-*copA1b*-F/C-*copA1b*-R using *S. meliloti* CCNWSX0020 genomic DNA as template. The PCR product was digested with *Sma*I/*Xba*I and inserted into broad-range plasmid pBBR1MCS-5 to generate pBBR-*copA1b*. The sequence of this construct to be used

in complementation was verified by automated DNA sequencing, transformed into *E. coli* donor strain DH5 $\alpha$ , and delivered into the  $\Delta copA1b$  mutant via triparental conjugation. Single clones carrying pBBR-*copA1b* were selected on TY plates containing gentamicin. The presence of the *copA1b* gene in the mutant strain was confirmed by PCR. The complementation of a *zntA* deletion was performed in a similar fashion.

Metal sensitivity assays of *S. meliloti* CCNWSX0020 wild type,  $\Delta copA1b$  mutant and  $\Delta zntA$  mutant and the corresponding complementations (C-*copA1b* and C-*zntA*) were performed on TY solid medium with different concentrations of CuSO<sub>4</sub>, ZnSO<sub>4</sub>, CdSO<sub>4</sub> and Pb(NO<sub>3</sub>)<sub>2</sub>. Cells were grown to exponential phase in TY liquid medium and then diluted to an OD<sub>600</sub> of 0.1. Four 10-fold dilutions were carried out and spotted on the agar medium. Each experiment was repeated three times.

### Heterologous expression of *S. meliloti copA1b* and *zntA* in *E. coli* $\Delta copA$ and $\Delta zntA$ strains.

Complementation plasmids pBBR-*copA1b* and pBBR-*zntA* were transformed into *E. coli*  $\Delta copA$  strain and *E. coli*  $\Delta zntA$  strain via triparental conjugation, respectively. Single clones carrying pBBR-*copA1b* or pBBR-*zntA* were selected on LB plates containing gentamicin. The presence of the *copA1b* or *zntA* gene in the *E. coli*  $\Delta copA$  and  $\Delta zntA$  strains was confirmed by PCR.

Copper and zinc sensitivity assays of *E. coli*  $\Delta copA$  and  $\Delta zntA$  strains and the corresponding complementation (C-*copA1b*-*E* <sub>$\Delta copA$</sub> , C-*copA1b*-*E* <sub>$\Delta zntA$</sub> , C-*zntA*-*E* <sub>$\Delta copA$</sub>  and C-*zntA*-*E* <sub>$\Delta zntA$</sub> ) were performed on LB solid medium. Cells were grown to exponential phase at 37 °C in LB liquid medium and then diluted to an OD<sub>600</sub> of 0.1. Five 10-fold dilutions were carried out and spotted on the agar medium with indicated concentrations of CuSO<sub>4</sub> and ZnSO<sub>4</sub>. Each experiment was repeated three times.

**Heavy and transition metal accumulation assay.** *Sinorhizobium meliloti* CCNWSX0020 wild type and mutant strains were grown at 28 °C in TY liquid medium until cells reached exponential phase at the same OD<sub>600</sub> of 0.8. Then cells were incubated for another 24 h with shaking at 150 rpm after TY medium had been supplemented with 0.8 mM CuSO<sub>4</sub>, 0.4 mM ZnSO<sub>4</sub>, 0.05 mM CdSO<sub>4</sub> and 2.0 mM Pb(NO<sub>3</sub>)<sub>2</sub>. Then cells were harvested by centrifugation at 8000 g for 10 min. The intracellular accumulated heavy and transition metals were measured by furnace atomic absorption spectroscopy (Varian SpectrAA 880/GTA 100) as described previously<sup>31</sup>. The data were shown as the means of biological triplicates  $\pm$  SD.

**H<sub>2</sub>O<sub>2</sub> sensitivity test and antioxidant enzyme activity assay.** *Sinorhizobium meliloti* CCNWSX0020 wild type strain,  $\Delta copA1b$  and  $\Delta zntA$  mutants were grown to exponential phase in TY liquid medium and then diluted to an OD<sub>600</sub> of 0.1. Four 10-fold dilutions were carried out and spotted on the agar medium with different concentration of H<sub>2</sub>O<sub>2</sub> for H<sub>2</sub>O<sub>2</sub> sensitivity test.

The exponential phase cells grown in TY liquid medium were treated or untreated with 500  $\mu$ M H<sub>2</sub>O<sub>2</sub> for 30 min. Then cells were harvested by centrifugation at 8000 g for 2 min and resuspended with enzyme extracting solution. Cell suspensions were lysed by ultrasonic disruption, followed by centrifugation at 8000 g for 10 min. Clear lysates were used for total protein determination and catalase, peroxidase and superoxide dismutase activity assay. Protein concentrations were determined by using the Bradford Bio-Rad protein assay. The catalase (CAT) activity was assayed by measurement of the degradation of H<sub>2</sub>O<sub>2</sub> at a wavelength of 240 nm according to the method of Aebi<sup>54</sup>. The peroxidase (POD) activity was determined spectrophotometrically at 470 nm by the method of Hammerschmidt, Nuckles and Kuc<sup>55</sup>. The superoxide dismutase (SOD) activity was assayed by measuring the enzyme's ability to inhibit the photochemical reduction of nitroblue tetrazolium (NBT) as described previously by Beauchamp and Fridovich<sup>56</sup>. The data were shown as the means of biological triplicates  $\pm$  SD.

**Real-time qRT-PCR analysis.** *Sinorhizobium meliloti* CCNWSX0020 and two zinc-sensitive mutants grown to exponential phase in TY liquid medium were supplemented with 0.6 mM CuSO<sub>4</sub>, 0.05 mM AgNO<sub>3</sub>, 0.4 mM ZnSO<sub>4</sub>, 0.1 mM CdSO<sub>4</sub> and 1.5 mM Pb(NO<sub>3</sub>)<sub>2</sub> and incubated for 30 min at 28 °C. Then cells were harvested and total RNA was extracted. Procedures including DNA elimination, cDNA synthesis and quantitative RT-PCR were performed as described previously<sup>32</sup>. All these assays were performed in triplicate. Primer pairs used to monitor transcription of genes are listed in Table S1. To standardize results, 16S rRNA was used as an internal standard and the relative levels of transcription were calculated using the 2<sup>- $\Delta\Delta C_t$</sup>  method<sup>57</sup>.

**Statistical analyses.** Statistical analyzes were carried out using SPSS 19.0 software (SPSS 208 Inc., Chicago, IL, USA). Paired two-tailed Student's t-test was performed to determine significant differences among the different experimental treatments. All of the data was analyzed using the Origin Pro v8.0 (Origin Lab, Hampton, USA) to create the figures.

## References

- Nelson, N. Metal ion transporters and homeostasis. *EMBO J* **18**, 4361–4371 (1999).
- Thompson, K. H. & Orvig, C. Boon and bane of metal ions in medicine. *Science* **300**, 936–939 (2003).
- Gilotra, U. & Srivastava, S. Plasmid-encoded sequestration of copper by *Pseudomonas pickettii* strain US321. *Curr Microbiol* **34**, 378–381 (1997).
- Ji, G. & Silver, S. Bacterial resistance mechanisms for heavy metals of environmental concern. *J Ind Microbiol* **14**, 61–75 (1995).
- Kuroda, K. & Ueda, M. Bioadsorption of cadmium ion by cell surface-engineered yeasts displaying metallothionein and hexa-His. *Appl Microbiol Biotechnol* **63**, 182–186 (2003).
- Nies, D. H. Efflux-mediated heavy metal resistance in prokaryotes. *FEMS Microbiol Rev* **27**, 313–339 (2003).
- Palmgren, M. G. & Nissen, P. P-type ATPases. *Annu Rev Biophys* **40**, 243–266 (2011).
- Gaitan-Solis, E., Taylor, N. J., Siritunga, D., Stevens, W. & Schachtman, D. P. Overexpression of the transporters AtZIP1 and AtMTP1 in cassava changes zinc accumulation and partitioning. *Front Plant Sci* **6** (2015).

9. Argüello, J. Identification of ion-selectivity determinants in heavy-metal transport P<sub>1B</sub>-type ATPases. *J Membr Biol* **195**, 93–108 (2003).
10. Argüello, J. M., Eren, E. & González-Guerrero, M. The structure and function of heavy metal transport P<sub>1B</sub>-ATPases. *Biomaterials* **20**, 233–248 (2007).
11. Mandal, A. K., Cheung, W. D. & Argüello, J. M. Characterization of a Thermophilic P-type Ag<sup>+</sup>/Cu<sup>+</sup>-ATPase from the Extremophile *Archaeoglobus fulgidus*. *J Biol Chem* **277**, 7201–7208 (2002).
12. Rensing, C., Fan, B., Sharma, R., Mitra, B. & Rosen, B. P. CopA: an *Escherichia coli* Cu (I)-translocating P-type ATPase. *Proc Natl Acad Sci USA* **97**, 652–656 (2000).
13. Sharma, R., Rensing, C., Rosen, B. P. & Mitra, B. The ATP hydrolytic activity of purified ZntA, a Pb (II)/Cd (II)/Zn (II)-translocating ATPase from *Escherichia coli*. *J Biol Chem* **275**, 3873–3878 (2000).
14. Rensing, C., Mitra, B. & Rosen, B. P. The *zntA* gene of *Escherichia coli* encodes a Zn (II)-translocating P-type ATPase. *Proc Natl Acad Sci USA* **94**, 14326–14331 (1997).
15. Mana-Capelli, S., Mandal, A. K. & Argüello, J. M. *Archaeoglobus fulgidus* CopB Is a Thermophilic Cu<sup>2+</sup>-ATPase functional role of its histidine-rich n-terminal metal binding domain. *J Biol Chem* **278**, 40534–40541 (2003).
16. Raimunda, D., Long, J. E., Sasseti, C. M. & Argüello, J. M. Role in metal homeostasis of CtpD, a Co<sup>2+</sup> transporting P<sub>1B4</sub>-ATPase of *Mycobacterium smegmatis*. *Mol Microbiol* **84**, 1139–1149 (2012).
17. Zielazinski, E. L. *et al.* *Sinorhizobium meliloti* Nia is a P<sub>1B-5</sub>-ATPase expressed in the nodule during plant symbiosis and is involved in Ni and Fe transport. *Metallomics* **5**, 1614–1623 (2013).
18. Smith, A. T., Smith, K. P. & Rosenzweig, A. C. Diversity of the metal-transporting P<sub>1B</sub>-type ATPases. *J Biol Inorg Chem* **19**, 947–960 (2014).
19. Patel, S. J., Padilla-Benavides, T., Collins, J. M. & Argüello, J. M. Functional diversity of five homologous Cu<sup>+</sup>-ATPases present in *Sinorhizobium meliloti*. *Microbiology* **160**, 1237–1251 (2014).
20. Brocklehurst, K. R. *et al.* ZntR is a Zn(II)-responsive MerR-like transcriptional regulator of *zntA* in *Escherichia coli*. *Mol Microbiol* **31**, 893–902 (1999).
21. Tsai, K.-J. *et al.* Membrane topology of the pl258 *cadA* Cd (II)/Pb (II)/Zn (II)-translocating p-type ATPase. *J Bioenerg Biomembr* **34**, 147–156 (2002).
22. Rossbach, S. *et al.* Response of *Sinorhizobium meliloti* to elevated concentrations of cadmium and zinc. *Appl Environ Microbiol* **74**, 4218–4221 (2008).
23. Maynaud, G. *et al.* *CadA* of *Mesorhizobium metallidurans* isolated from a zinc-rich mining soil is a P<sub>1B-2</sub>-type ATPase involved in cadmium and zinc resistance. *Res Microbiol* **165**, 175–189 (2014).
24. Li, Z., Ma, Z., Hao, X. & Wei, G. Draft genome sequence of *Sinorhizobium meliloti* CCNWSX0020, a nitrogen-fixing symbiont with copper tolerance capability isolated from lead-zinc mine tailings. *J Bacteriol* **194**, 1267–1268 (2012).
25. González-Guerrero, M., Raimunda, D., Cheng, X. & Argüello, J. M. Distinct functional roles of homologous Cu<sup>+</sup> efflux ATPases in *Pseudomonas aeruginosa*. *Mol Microbiol* **78**, 1246–1258 (2010).
26. Humbert, M. V., Rasia, R. M., Checa, S. K. & Sconini, F. C. Protein signatures that promote operator selectivity among paralog MerR monovalent metal ion regulators. *J Biol Chem* **288**, 20510–20519 (2013).
27. Stoyanov, J. V., Hobman, J. L. & Brown, N. L. CueR (YbbI) of *Escherichia coli* is a MerR family regulator controlling expression of the copper exporter CopA. *Mol Microbiol* **39**, 502–512 (2001).
28. Stoyanov, J. V. & Brown, N. L. The *Escherichia coli* Copper-responsive *copA* Promoter Is Activated by Gold. *J Biol Chem* **278**, 1407–1410 (2003).
29. Fridovich, I. Superoxide dismutases: studies of structure and mechanism. *Adv Exp Med Biol* **74**, 530 (1976).
30. Hersleth, H.-P., Ryde, U., Rydberg, P., Görbitz, C. H. & Andersson, K. K. Structures of the high-valent metal-ion haem-oxygen intermediates in peroxidases, oxygenases and catalases. *J Inorg Biochem* **100**, 460–476 (2006).
31. Fan, L.-M. *et al.* Characterization of a copper-resistant symbiotic bacterium isolated from *Medicago lupulina* growing in mine tailings. *Bioresour Technol* **102**, 703–709 (2011).
32. Li, Z., Ma, Z., Hao, X., Rensing, C. & Wei, G. Genes conferring copper resistance in *Sinorhizobium meliloti* CCNWSX0020 also promote the growth of *Medicago lupulina* in copper-contaminated soil. *Appl Environ Microbiol* **80**, 1961–1971 (2014).
33. Li, Z., Lu, M. & Wei, G. An *omp* gene enhances cell tolerance of Cu (II) in *Sinorhizobium meliloti* CCNWSX0020. *World J Microb Biot* **29**, 1655–1660 (2013).
34. Zhitnitsky, D. & Lewinson, O. Identification of functionally important conserved trans-membrane residues of bacterial P<sub>1B</sub>-type ATPases. *Mol Microbiol* **91**, 777–789 (2014).
35. Okkeri, J. & Haltia, T. The metal-binding sites of the zinc-transporting P-type ATPase of *Escherichia coli*. Lys<sup>693</sup> and Asp<sup>714</sup> in the seventh and eighth transmembrane segments of ZntA contribute to the coupling of metal binding and ATPase activity. *Bba-bioenergetics* **1757**, 1485–1495 (2006).
36. González-Guerrero, M., Eren, E., Rawat, S., Stemmler, T. L. & Argüello, J. M. Structure of the two transmembrane Cu<sup>+</sup> transport sites of the Cu<sup>+</sup>-ATPases. *J Biol Chem* **283**, 29753–29759 (2008).
37. Drees, S. L., Beyer, D. F., Lenders-Lomscher, C. & Lübben, M. Distinct functions of serial metal-binding domains in the *Escherichia coli* P<sub>1B</sub>-ATPase CopA. *Mol Microbiol* **97**, 423–438 (2015).
38. Fu, Y. *et al.* A new structural paradigm in copper resistance in *Streptococcus pneumoniae*. *Nat Chem Biol* **9**, 177–183 (2013).
39. Preisig, O., Zufferey, R. & Hennecke, H. The *Bradyrhizobium japonicum* *fixGHIS* genes are required for the formation of the high-affinity *cbb<sub>3</sub>*-type cytochrome oxidase. *Arch Microbiol* **165**, 297–305 (1996).
40. Hassani, B. K., Astier, C., Nitschke, W. & Ouchane, S. CtpA, a copper-translocating P-type ATPase involved in the biogenesis of multiple copper-requiring enzymes. *J Biol Chem* **285**, 19330–19337 (2010).
41. Argüello, J. M., González-Guerrero, M. & Raimunda, D. Bacterial transition metal P<sub>1B</sub>-ATPases: transport mechanism and roles in virulence. *Biochemistry* **50**, 9940–9949 (2011).
42. Botella, H., Stadthagen, G., Lugo-Villarino, G., de Chastellier, C. & Neyrolles, O. Metallobiology of host–pathogen interactions: an intoxicating new insight. *Trends Microbiol* **20**, 106–112 (2012).
43. Hood, M. I. & Skaar, E. P. Nutritional immunity: transition metals at the pathogen–host interface. *Nat Rev Microbiol* **10**, 525–537 (2012).
44. Djoko, K. Y., Cheryl-lynn, Y. O., Walker, M. J. & McEwan, A. G. The Role of Copper and Zinc Toxicity in Innate Immune Defense against Bacterial Pathogens. *J Biol Chem* **290**, 18954–18961 (2015).
45. Stafford, J. L., Neumann, N. F. & Belosevic, M. Macrophage-mediated innate host defense against protozoan parasites. *Crit Rev Microbiol* **28**, 187–248 (2002).
46. Botella, H. *et al.* Mycobacterial P<sub>1</sub>-type ATPases mediate resistance to zinc poisoning in human macrophages. *Cell Host Microbe* **10**, 248–259 (2011).
47. Mohamad, O. A. *et al.* Biosorption of copper (II) from aqueous solution using non-living *Mesorhizobium amorphae* strain CCNWS0123. *Microbes Environ* **27**, 234 (2012).
48. Consortium, U. UniProt: a hub for protein information. *Nucleic Acids Res* **43**, D204–D212 (2014).
49. Larkin, M. A. *et al.* Clustal W and Clustal X version 2.0. *Bioinformatics* **23**, 2947–2948 (2007).
50. Link, A. J., Phillips, D. & Church, G. M. Methods for generating precise deletions and insertions in the genome of wild-type *Escherichia coli*: application to open reading frame characterization. *J Bacteriol* **179**, 6228–6237 (1997).

51. Schäfer, A. *et al.* Small mobilizable multi-purpose cloning vectors derived from the *Escherichia coli* plasmids pK18 and pK19: selection of defined deletions in the chromosome of *Corynebacterium glutamicum*. *Gene* **145**, 69–73 (1994).
52. Wilson, T. & Carson, J. Rapid, high-throughput extraction of bacterial genomic DNA from selective-enrichment culture media. *Lett Appl Microbiol* **32**, 326–330 (2001).
53. Hao, X. *et al.* Copper Tolerance Mechanisms of *Mesorhizobium amorphae* and Its Role in Aiding Phytostabilization by *Robinia pseudoacacia* in Copper Contaminated Soil. *Environ Sci Technol* **49**, 2328–2340 (2015).
54. Aebi, H. Catalase *in vitro*. *Methods Enzymol* **105**, 121–126 (1984).
55. Hammerschmidt, R., Nuckles, E. & Kuć, J. Association of enhanced peroxidase activity with induced systemic resistance of cucumber to *Colletotrichum lagenarium*. *Physiological Plant Pathology* **20**, 73–82 (1982).
56. Beauchamp, C. & Fridovich, I. Superoxide dismutase: improved assays and an assay applicable to acrylamide gels. *Anal Biochem* **44**, 276–287 (1971).
57. Livak, K. J. & Schmittgen, T. D. Analysis of relative gene expression data using real-time quantitative PCR and the  $2^{-\Delta\Delta CT}$  method. *Methods* **25**, 402–408 (2001).
58. Hanahan, D. Studies on transformation of *Escherichia coli* with plasmids. *J Mol Biol* **166**, 557–580 (1983).
59. Grass, G. & Rensing, C. Genes involved in copper homeostasis in *Escherichia coli*. *J Bacteriol* **183**, 2145–2147 (2001).
60. Kovach, M. E. *et al.* Four new derivatives of the broad-host-range cloning vector pBRR1MCS, carrying different antibiotic-resistance cassettes. *Gene* **166**, 175–176 (1995).

## Acknowledgements

This work was supported by the National Natural Science Foundation of China (grant numbers 31370142 and 31270012). We thank Tanya Soule for donating the pRK2013 plasmid.

## Author Contributions

G.W. and Z.L. conceived and designed the experiment, M.L., J.L. and Y.W. performed experiments. M.L. wrote the manuscript and C.R. revised the manuscript and assisted with manuscript preparation. All authors have read the manuscript and agree with its content.

## Additional Information

**Supplementary information** accompanies this paper at <http://www.nature.com/srep>

**Competing financial interests:** The authors declare no competing financial interests.

**How to cite this article:** Lu, M. *et al.* Zinc Resistance Mechanisms of P1B-type ATPases in *Sinorhizobium meliloti* CCNWSX0020. *Sci. Rep.* **6**, 29355; doi: 10.1038/srep29355 (2016).



This work is licensed under a Creative Commons Attribution 4.0 International License. The images or other third party material in this article are included in the article's Creative Commons license, unless indicated otherwise in the credit line; if the material is not included under the Creative Commons license, users will need to obtain permission from the license holder to reproduce the material. To view a copy of this license, visit <http://creativecommons.org/licenses/by/4.0/>