

# SCIENTIFIC REPORTS



OPEN

## Divergent Evolutionary Pattern of Sugar Transporter Genes is Associated with the Difference in Sugar Accumulation between Grasses and Eudicots

Received: 17 November 2015

Accepted: 15 June 2016

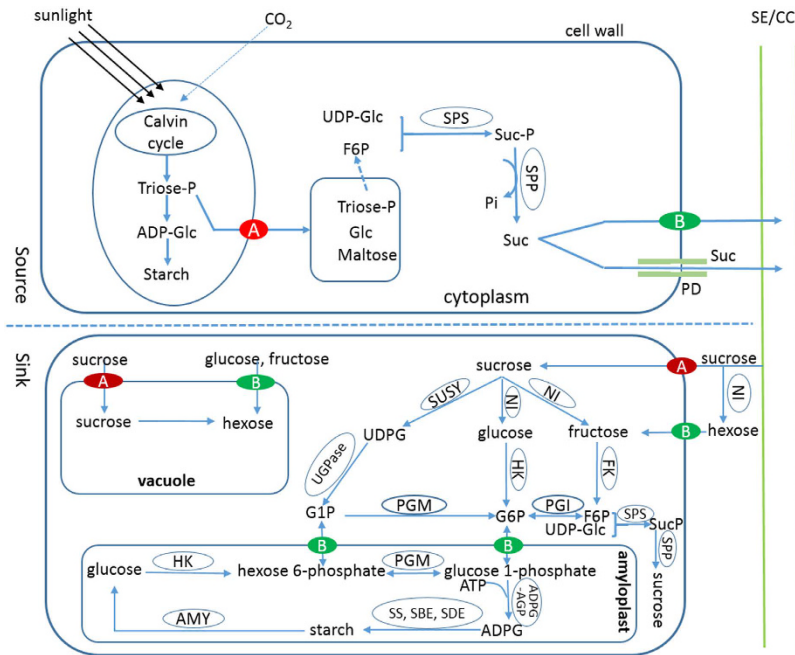
Published: 30 June 2016

Wei Wang<sup>1</sup>, Hui Zhou<sup>1,2</sup>, Baiquan Ma<sup>1,2</sup>, Albert Owiti<sup>1,2</sup>, Schuyler S. Korban<sup>3</sup> & Yuepeng Han<sup>1,4,\*</sup>

Sugars play a variety of roles in plants, and their accumulation in seeds and/or surrounding pericarp tissues is distinctly different between grasses and eudicots. However, little is known about the evolutionary pattern of genes involved in sugar accumulation in these two major groups of flowering plants. Here, we compared evolutionary rates, gene duplication, and selective patterns of genes involved in sugar metabolism and transport between grasses and eudicots using six grass species and seven eudicot species as materials. Overall, sugar transporter genes exhibit divergent evolutionary patterns, whereas, sugar metabolism genes showing similar evolutionary pattern between monocots and eudicots. Sugar transporter genes have higher frequencies of recent duplication in eudicots than in grasses and their patterns of evolutionary rate are different. Evidence for divergent selection of these two groups of flowering plants is also observed in sugar transporter genes, wherein, these genes have undergone positive selection in eudicots, but not in grasses. Taken together, these findings suggest that sugar transporter genes rather than sugar metabolism genes play important roles in sugar accumulation in plants, and that divergent evolutionary patterns of sugar transporter genes are associated with the difference of sugar accumulation in storage tissues of grasses and eudicots.

Monocots and eudicots are the two major classes of angiosperms. Eudicots includes many economic crops such as soybean (*Glycine max*), castor-oil plant (*Ricinus communis*), tomato (*Solanum lycopersicum*), and fruit trees such as apple (*Malus × domestica*) and orange (*Citrus sinensis*). Grasses (Poaceae) are the most economically important family of monocots and contain many important cereal crops, including rice (*Oryza sativa*), foxtail millet (*Setaria italica*), and corn (*Zea mays*), among others. Monocots and eudicots show distinct differences in morphology and physiology, such as the structural features and storage compounds of seeds, although little is known about the mechanism underlying the differences<sup>1</sup>. In general, monocot seeds have endosperms at maturity and serving as storage tissues, whereas, mature seeds of eudicots lack endosperms, and cotyledons serve as major storage organs. Moreover, monocot seeds are usually rich in starch, whereas, eudicot seeds are rich in proteins and/or lipids. All these energy-rich storage compounds are initially derived from sugars, the primary products of photosynthesis (Fig. 1). In addition, the maternal pericarp enclosing the seed in monocots functions as a transitory storage organ during early caryopsis (grain fruit) development and the pericarp starch is remobilized into the rapidly expanding endosperm when the grains reach maximum lengths<sup>2</sup>. In contrast, in eudicots such as fruit trees, the pericarp serves as the main storage organ and accumulates large amounts of sugars. Therefore, sugar metabolism in seed, along with the surrounding pericarp, is significantly different between monocots and eudicots. Sugars are the

<sup>1</sup>Key Laboratory of Plant Germplasm Enhancement and Specialty Agriculture, Wuhan Botanical Garden of the Chinese Academy of Sciences, Wuhan, 430074, China. <sup>2</sup>Graduate University of Chinese Academy of Sciences, 19A Yuquanlu, Beijing, 100049, China. <sup>3</sup>Department of Biology, University of Massachusetts Boston, Boston, MA 02184, USA. <sup>4</sup>Sino-African Joint Research Center, Chinese Academy of Sciences, Wuhan, 430074, China. \*Present address: Wuhan Botanical Garden of the Chinese Academy of Sciences, Wuhan, 430074, China. Correspondence and requests for materials should be addressed to Y.H. (email: yphan@wbcas.cn)



**Figure 1. Sucrose (Suc) synthesis, metabolism and transport in plant cell.** ADP-Glc: ADP-glucose; Glc: glucose; triose-P: triose-phosphate; G6P: Glc-6-phosphate; G1P: Glc-1-phosphate; F6P: fructose-6-phosphate; UDPG: uridine diphosphate glucose; SE/CC: sieve element/companion cell; Suc-P: Suc-phosphate; SPS: Suc-phosphate synthase; SPP: Suc-phosphate phosphatase; PGI: phosphoglucose isomerase; NI: neutral invertase; SUSY: sucrose synthase; HK: hexokinase; FK: fructokinase; PGM: phosphoglucomutase; UDPase: UDP-glucose pyrophosphorylase; SS: starch synthase; SBE: starch branching enzyme; SDE: starch debranching enzyme; AMY: amylase; A: sucrose transporter; and B: sugar transport protein.

major components of edible horticultural crops such as fruits and vegetables and they have a strong impact on the overall organoleptic quality of fruits and vegetables. Thus, understanding the mechanism(s) that drive sugar accumulation in plants will lead to novel ideas for increasing sugar yields, not only for fruit and vegetable crops, but also for bioenergy crops as well.

Sugars, the primary products of photosynthesis, function as energy-storage and carbon transport molecules and substrates for starch, protein, and lipid metabolism. Sugars also function as osmotic and hormone-like primary messengers in signal transduction. Therefore, sugars perform a variety of roles in plants<sup>3</sup>. Sugar metabolism in plants comprises a complex network of multiple pathways, and involves in cytosol and several organelles, such as vacuoles and amyloplasts (Fig. 1). In sink cells, sucrose is converted to fructose and glucose by neutral invertase (NI). Fructose and glucose are further converted to fructose-6-phosphate (F6P) and Glc-6-phosphate (G6P) by fructokinase (FK) and hexokinase (HK), respectively. Moreover, sucrose can also be converted to G6P via three successive reactions catalyzed by sucrose synthase (SUSY), UDP-glucose pyrophosphorylase (UDPase), and phosphoglucomutase (PGM), respectively. Both G1P and G6P are used for starch synthesis, whereas, F6P can be combined with UDP-glucose (UDPG) to re-synthesize sucrose via suc-phosphate synthase (SPS) and suc-phosphate phosphatase (SPP). In addition, G6P and F6P can interconvert into each other via phosphoglucose isomerase (PGI). Soluble sugars are transported into vacuole by transporter proteins located on the vacuole membrane, such as sucrose transporter (SUT) and monosaccharide transporter (MST)<sup>4</sup>. The MST family is diverse and contains seven distinct subfamilies, sucrose transporter (SUT), tonoplasmic monosaccharide transporter (TMT), vacuolar glucose transporter (VGT), polyol/monosaccharide transporter (PMT), sugar transporter protein (STP), inositol transporter (INT), plastidic glucose transporter (pGlcT), and early-responsive to dehydration (ERD6)-like transporter<sup>5</sup>. Genes involved in sugar metabolism and transport between cytosol and vacuole have been identified in numerous plants, and their functions have been found remarkably conserved across all eudicots and grasses<sup>3,6</sup>.

In plants, sugar accumulation is dependent upon two processes, biosynthesis and transport. To date, many studies have been conducted to investigate regulatory mechanisms of sugar accumulation<sup>7-9</sup>. Some studies have reported that genes involved in sugar biosynthesis, including *NI*, *SUSY*, *HK*, and *SPS*, play important roles in sugar accumulation<sup>10-14</sup>, while other studies have argued that genes involved in sugar transport, such as *SUT* and *MST* families, are important for sugar accumulation<sup>15-17</sup>. Therefore, additional studies are needed to clarify whether it is sugar biosynthesis or transport that is more important in sugar accumulation.

More recently, several studies reveal evolutionary patterns of genes involved in starch biosynthesis in plants. For example, Yu *et al.*<sup>18</sup> reported the strong evidence of positive selection at *AGPL*, *GBSSI* and *SBEII* in rice wild ancestor<sup>18</sup>. Li *et al.*<sup>19</sup> found that divergent evolutionary pattern of genes involved in starch biosynthetic pathway between grasses and eudicots contributes to the observed differences in starch biosynthesis in seeds<sup>19</sup>. However, there are few reports on the mechanisms underlying the observed sugar accumulation difference in seeds and

their surrounding pericarps between grasses and eudicots. In this study, we compared the evolutionary rates, gene duplication, and selective patterns of genes involved in sugar accumulation between grasses and eudicot plants, including four above-mentioned key gene families involved in sugar metabolism, *HK*, *NI*, *SPS*, and *SUSY*, and two sugar transporter gene families, *SUT* and *MST*. It is worth noting that a newly identified sugar transporter family called SWEET is involved in sugar transport in plants<sup>20</sup>. However, most SWEET genes play an important roles in phloem transport and are related to biotic and abiotic stress<sup>21–25</sup>. Since phloem transport is not a limited step for sugar accumulation in storage organs such as seeds or fruits<sup>26</sup>, the SWEET family was not included in this study. Our aim is to determine whether genes involved in either sugar metabolism or transport are most critical for sugar accumulation in plants. Our study not only provides insights into the observed divergent evolutionary patterns of genes involved in sugar accumulation in plants, but will also contribute to understanding of the observed morphological and physiological differences between grass and eudicot plants.

## Materials and Methods

**Retrieval and Comparison of Sequences.** Amino acid sequences of genes involved in sugar accumulation and transport were collected using the protocol described by Tatusov *et al.*<sup>27</sup>, but with slight modifications. Briefly, the main steps were as follows: (1) Protein-coding transcripts of *Brachypodium distachyon* (v2.1 release)<sup>28</sup>, *Oryza sativa* (MSU Release 7.0)<sup>29</sup>, *Setaria italic* (v2.1 release)<sup>30</sup>, *Sorghum bicolor* (v2.1 release)<sup>31</sup>, *Zea mays* (6a release)<sup>32</sup>, *Arabidopsis thaliana* (TAIR release)<sup>33</sup>, *Citrus sinensis* (v1.1 release)<sup>34</sup>, *Malus × domestica* (v1.0 release)<sup>35</sup>, *Glycine max* (Glyma1.0, Soybean Genome Project)<sup>36</sup>, *Ricinus communis* (release v0.1)<sup>37</sup>, *Solanum lycopersicum* (iTAG2.3 release)<sup>38</sup>, *Panicum virgatum* (v1.1), and *Populus trichocarpa* (v3.0)<sup>39</sup> were downloaded from either JGI (<http://www.phytozome.net/>) or the Rice Genome Annotation Project (<http://rice.plantbiology.msu.edu/>) and a local BLAST database was constructed for each species using BLAST 2.2.24; (2) An all-against-all protein sequence comparison was carried out to identify homologous genes of *Arabidopsis* or *Oryza sativa* in eudicots and grasses, respectively; (3) In all the comparisons performed in the step 2, the orthologs were further identified using BLAST 2.2.24 with *SUT2* in *Arabidopsis* or rice as a query, and obvious paralogs were collapsed; (4) All interspecies Best Hits (BeTs) of *AtSUT2* or *OsSUT2* and their paralogs were detected; (5) Steps 3 and 4 were repeated, with other *SUT* genes rather than *SUT2* as BLASTp queries until all the *SUT* genes were identified; (6) Clusters of Orthologous Groups (COGs) were formed for the *SUT* gene family using the protocol previously reported by Tatusov *et al.*<sup>27</sup>; (7) COGs were constructed for other gene families using the same protocol as conducted for the *SUT* gene family.

**Estimation of Gene Duplication and Gene Loss.** Within each gene family, gene duplication and loss were analyzed by checking of each subfamily manually. Each gene family was assumed to have at least two subclades, grass and eudicot subfamilies, with at least six and seven members in grass and eudicot subfamilies, respectively. If there are two or more grass or dicot subclades, or if a subclade has two or more members from the same species, it was assumed to have one or more duplications. If a member was found to be missing from any species within the grass or eudicot subclade, it was concluded that there was a gene loss. Each gene loss was further validated by searching GenBank database using BLASTp.

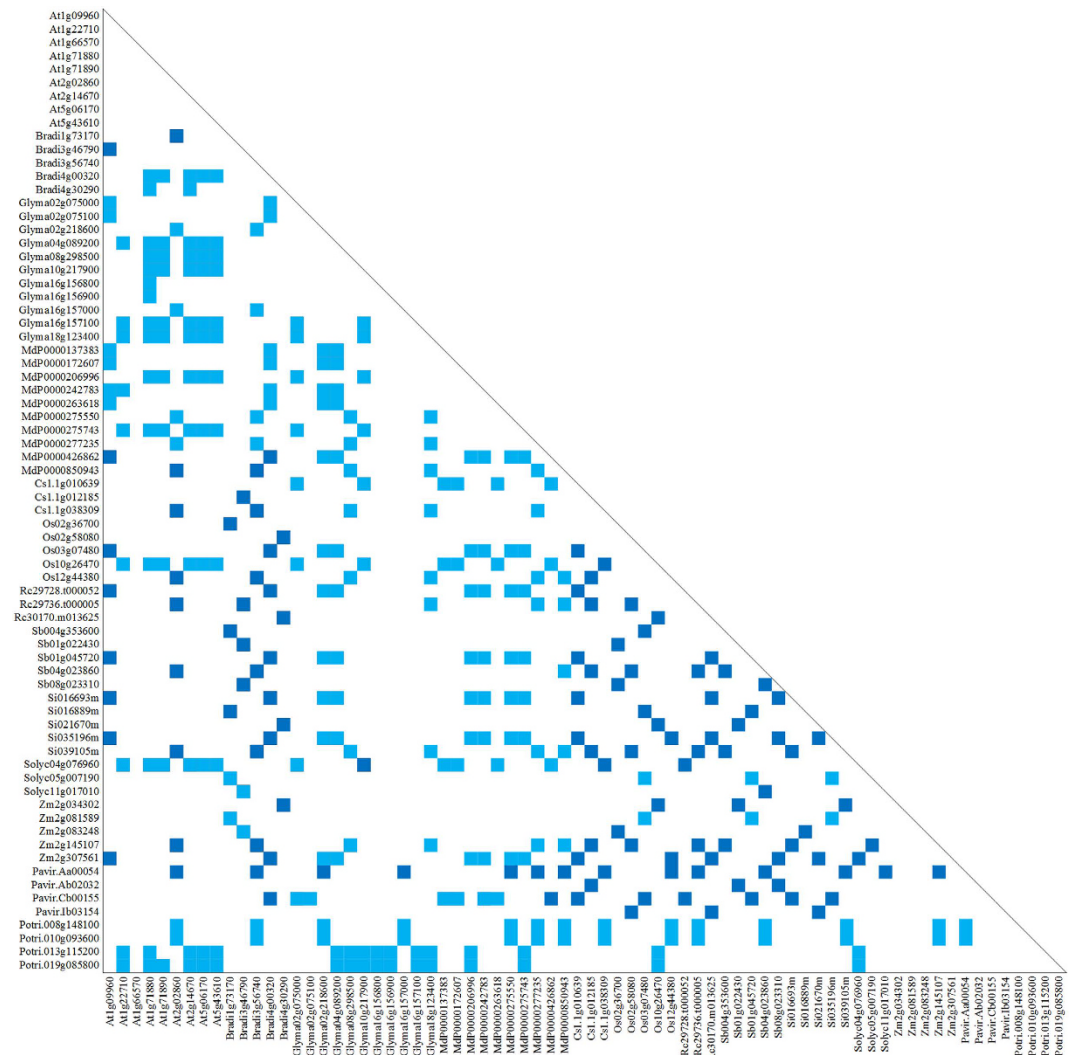
**Phylogenetic Analyses.** Amino acid sequences were aligned using CLUSTAL X and manually adjusted using Seaview (Galtier *et al.*<sup>40</sup>). The resulting data matrix was used to construct a phylogenetic tree using the MEGA software (v6.06)<sup>41</sup> with both Neighbor Joining (NJ) and Maximum Likelihood (ML) methods. For the NJ method, the parameters were as follows: model, p-distance; bootstrap, 1,000 replicates; and gaps/missing data treatment, pairwise deletion. For the ML method, the parameter setups were as follows: model, Jones-Taylor-Thornton (JTT); bootstrap, 1,000 replicates; gaps/missing data treatment, partial deletion; and branch swap filter, very strong.

**Estimation of  $d_N:d_S$  Ratio.** The codon sequences were aligned using MEGA v7.0 software with muscle codons alignment model, and termination codons were manually deleted. The alignment result was used for estimation of the  $\omega$  values using maximum likelihood method in Codeml from the PAML v4.9a<sup>42</sup>. The significance of variation in the  $\omega$  value among different branches in gene trees was tested using Codeml, a branch-specific model. This branch-specific model can be compared with one-ratio model that assumes a constant  $\omega$  value across all branches using the likelihood ratio test (LRT).

Coding DNA sequences were aligned using CLUSTAL X and adjusted manually, as deemed necessary. The resulting data matrix was used to estimate  $\omega$  value, the ratio of nonsynonymous substitutions per nonsynonymous site ( $d_N$ ) to synonymous substitutions per synonymous site ( $d_S$ ) of homologous gene pairs. The estimation of  $\omega$  value was performed with the maximum likelihood method using a KaKs\_Calculator package (v1.2)<sup>43,44</sup>.

The variation of the  $\omega$  ratio among different branches in gene trees was tested using the pairwise comparison approach<sup>19</sup>. Briefly, the  $\omega$  ratios between two randomly selected sequences within the grass or eudicot subclade were calculated using the KaKs\_Calculator package. The difference of the  $\omega$  ratios were compared between grass and eudicot subclades with the paired *t*-test using SPSS, and the comparison was only conducted between orthologous subclades. Significant difference was set as  $P < 0.05$ .

**Identification of Positively Selected Sites.** The codon sequences from grasses or eudicots were aligned using the online program MAFFT (<http://mafft.cbrc.jp/alignment/server/>), and the results were saved in PHYLIP format files. The aligned sequences were used to construct phylogenetic trees using the MEGA software (v6.06)<sup>41</sup> with Neighbor Joining (NJ), and the results were stored in tree files. The PHYLIP format files, along with the trees file, were used for estimating  $d_N:d_S$  ratios with maximum likelihood method using the program Fitmodel (version: 0.5.3)<sup>45</sup>. The parameter setups were as follows: data type, DNA; DNA substitution model applies, codons; genetic code, universal; model of codon substitution, M3; model of swtiches between selection reigns, S1 or not;



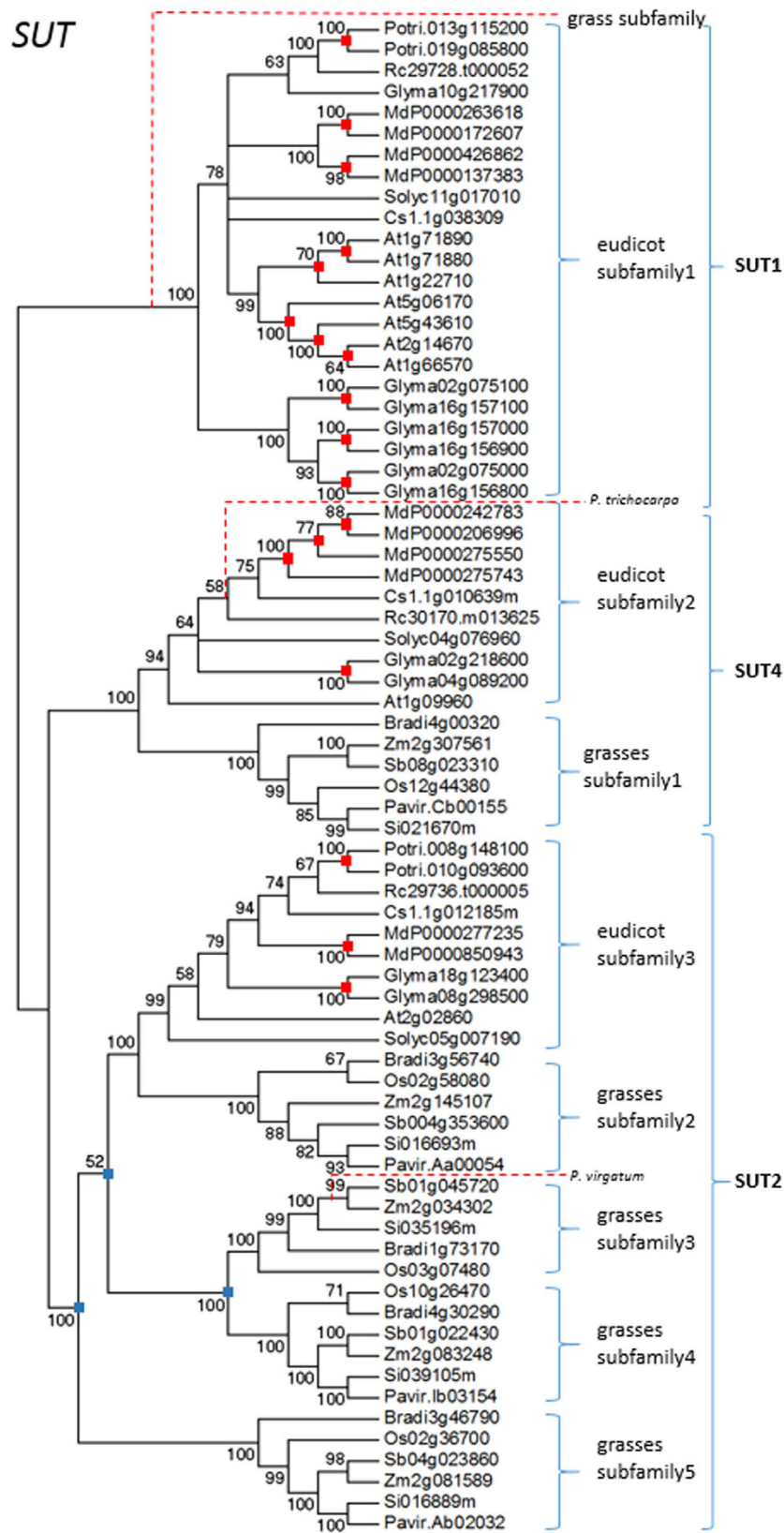
**Figure 2.** Clusters of orthologous groups (COG) of the *SUT* gene family in plants. Deep and light blue squares correspond to symmetrical and asymmetrical best hits (BeTs), respectively. Each gene ID is indicated, and the prefix “Rc” denotes IDs from *Ricinus communis*.

start with default values for switching rates, yes; start with default dn/ds ration parameters, yes; Ts/tv ratio, fixed; codon frequency,  $F3 \times 4$ ; analyze multiple data sets, no; optimis substitution parameters, yes. The  $d_1/d_2$  ratios were subsequently used to estimate positively selected sites in grasses or eudicots. Moreover, switching parameters were also estimated using the models M3 and M3 + 1, which were described by Yang and Nielsen<sup>46</sup> and Guindon *et al.*<sup>45</sup>.

**Detection of Functional Divergence after Gene Duplication.** Estimation of gene functional divergence after gene duplication was conducted using the Type II model in DIVERGE v3.0 software<sup>47</sup>. The amino acid sequences from grasses and eudicots were aligned using MEGA v7.0 and the results were saved as FASTA format. NJ phylogenetic tree was constructed using PHYLIP v3.6 software following the instructions of the DIVERGE v3.0 software. In addition, each gene subfamily within the same phylogenetic tree was treated as one cluster.

## Results

**Phylogenetic Analyses.** Twelve COGs were obtained and are shown in Fig. 2 and supplementary Fig. S1. Homologs of twelve gene families, *HK*, *NI*, *SPS*, *SUSY*, *SUT*, *TMT*, *VGT*, *PMT*, *STP*, *ERD6-like*, *pGlcT*, and *INT*, were included in a single COG (Fig. 2 and supplementary Fig. S1). Phylogenetic trees showed that both NJ and ML methods yielded identical topologies (Fig. 3 and supplementary Fig. S2). Each gene family consisted of multiple subfamily clades, which were supported by high levels of confidence (mostly > 90% bootstrap value) in all phylogenetic trees. For example, the *SUT* gene family was composed of three eudicot subfamilies and five grass subfamilies (Fig. 3), and all these eight subfamilies were clustered into three clades (*SUT1*, *SUT2*, and *SUT4*). This is consistent with earlier finding that the *SUT* gene family in *A. thaliana* is composed of three types<sup>48</sup>. However, all *SUT* genes in grasses were grouped into the *SUT2* and *SUT4* types, with none belonging to the *SUT1* type (Fig. 3). As for the *SUT1* type, gene duplication occurred frequently in most eudicot species such as *A. thaliana* following



**Figure 3.** Analysis of phylogenetic relationships between SUT proteins in plants using the Neighbor-Joining method. Bootstrap values (higher than 50%) are shown near branched lines. Recent and old duplication events are indicated by red and blue dots, respectively. Gene loss is indicated by red dash line. Genes are designated based on previous reports or BLAST results.

Species	Duplication type	Genes
Grass-specific	Old gene duplication	<i>SPS(2), HK(5), NI(3), SUSY(3), PMT(1), STP(4), SUT(3), TMT(2), ERD6-like(2), INT(1)</i>
	Recent gene duplication	<i>SPS(3), HK(4), NI(3), SUSY(3), TMT(2), STP(2)</i>
	Old gene loss	<i>SUT</i>
	Recent gene loss	<i>HK, NI, SUSY, STP, TMT, ERD6-like, INT, pGlcT, SUT, PMT</i>
Eudicot-specific	Old gene duplication	<i>SPS(1), HK(1), SUSY(1), STP(1), TMT(1)</i>
	Recent gene duplication	<i>SPS(5), HK(10), NI(7), SUSY(9), PMT(15), STP(34), SUT(18), TMT(9), VGT(4), ERD6-like(16), INT(12), pGlcT(5)</i>
	Old gene loss	N/D
	Recent gene loss	<i>HK, SUSY, PMT, STP, SUT, NI, SPS, ERD6-like, pGlcT, TMT</i>

**Table 1. Gene duplication and gene loss in gene families involved in sugar metabolism and transport in both grasses and dicots.**

the monocot-eudicot split. For the *SUT2* type, gene duplication occurred twice in grasses during the process of speciation. In addition, both grasses and eudicots contain *SUT2* and *SUT4* types, which suggested that the duplication of *SUT* genes have also occurred prior to the monocot-eudicot split. In short, gene duplication events in the *SUT* gene family have occurred at various time points during the process of plant evolution, covering both before and after the monocot-eudicot split.

Similar to the *SUT* gene family, the *MST* gene families, *TMT*, *VGT*, *PMT*, *STP*, *ERD6-like*, *pGlcT*, and *INT*, are also composed of multiple subfamilies (supplementary Fig. S2). The *STP* gene family contained the most abundant subfamilies, including nine grass subfamilies and eight eudicot subfamilies, while the *VGT* gene family had the lowest number of subfamilies, including two grass subfamilies and two eudicot subfamilies. The rest five transporter gene families, *TMT*, *PMT*, *ERD6-like*, *pGlcT*, and *INT*, contained 3–5 grass subfamilies and 3–4 eudicot subfamilies. Most duplication events of the *MST* gene families have primarily occurred following the monocot-eudicot split. Gene loss event was observed in all the *MST* gene families except the *VGT* family.

For sugar metabolism gene families, both *HK* and *NI* families contained eight grass subfamilies and four eudicot subfamilies, while *SPS* and *SUSY* families consisted of 5–6 grass subfamilies and 4–5 eudicot subfamilies. Similar to *SUT* genes, duplication events of these sugar metabolism genes have occurred both before and after the monocot-eudicot split.

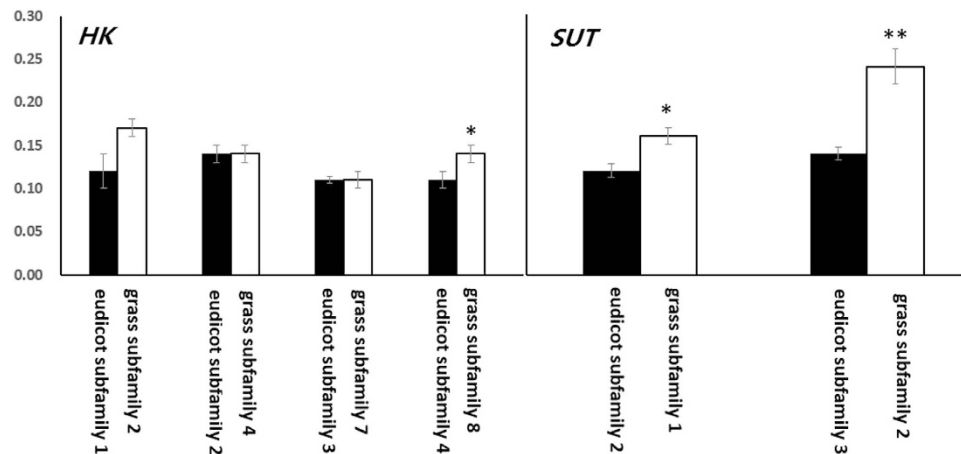
**Differences in Gene Duplication and Loss Patterns between Grasses and Eudicots.** It has been reported that gene duplication can be classified into either recent or old duplications according to the time of occurrence<sup>49</sup>. In this study, both grass-specific (duplication prior to radiation of grasses) and eudicot-specific (duplication prior to radiation of eudicots) duplications were designated as old duplications, whereas, recent duplications were deemed as species-specific duplications (duplication within a species). Both recent and old duplications were investigated for each gene family (Table 1). In grasses, old duplication occurred approximately 26 times in ten gene families (*PMT*, *HK*, *SUT*, *SUSY*, *PMT*, *TMT*, *NI*, *SPS*, *ERD6-like*, and *INT*), but only five times in five gene families (*SPS*, *HK*, *SUSY*, *STP* and *TMT*) in eudicots. In addition, recent duplication in grasses occurred 17 times in six gene families (*NI*, *SPS*, *HK*, *TMT*, *STP*, and *SUSY*), whereas, recent duplication occurred 144 times in all the tested gene families in eudicots. The *STP* genes showed the highest frequency of recent duplication in eudicots (34 times). In short, old duplication frequently occurred in grasses, while recent duplication frequently occurred in eudicots. In addition, it is interesting to note that the frequencies of recent duplications showed significant variations among tested eudicot species, with most recent duplications observed in the following two species, *M. × domestica* and *G. max*.

Recent gene loss in grasses was observed in ten gene families, including *HK*, *TMT*, *NI*, *STP*, *SPS*, *PMT*, *SUT*, *pGlcT*, *ERD6-like*, and *INT* (Table 1). Similarly, recent gene loss in eudicots was also observed in ten gene families, including *HK*, *TMT*, *NI*, *STP*, *SPS*, *PMT*, *SUT*, *pGlcT*, *ERD6-like*, and *SPS*. Moreover, old gene loss was only observed in the *SUT1* clade in grasses (Table 1, Fig. 3). Overall, recent gene loss events occurred frequently in both grasses and eudicots, while old gene loss event rarely occurred in both grasses and eudicots (Table 1, Fig. 3, and supplementary Fig. S2).

### Most Genes Involved in Sugar Metabolism and Transport Have Rapidly Evolved in Grasses.

To determine whether sugar metabolism and transport gene families are under different evolutionary constraints in both grasses and eudicots, pairwise  $\omega$  ( $d_N/d_S$ ) values for all tested genes were calculated using the pairwise comparison model. The pairwise  $\omega$  values within each subfamily were subsequently compared between grasses and eudicots. As a result, 10 subfamilies within the *SUT*, *HK*, *VGT*, *PMT*, *STP* and *pGlcT* gene families showed significantly higher mean  $\omega$  values in grasses than in eudicots (Fig. 4, Supplementary Table S1), whereas, 13 subfamilies within the *STP*, *TMT*, *INT*, *pGlcT*, and *ERD6-like* families showed significantly higher mean  $\omega$  values in eudicots than in grasses (Supplementary Table S1). This finding suggests that the majority of the genes involved in sugar transport are significantly different in evolutionary rates between grasses and eudicots.

Since pairwise comparison approach model cannot calculate the evolutionary rate of the most recent common ancestor of the subfamily, the branch-specific model was selected to check whether there are the changes in the evolutionary constraints across different subfamilies. As a result, all the metabolic gene families had *p*-values larger than 0.05, whilst almost all sugar transport gene families except *VGT* had *p*-values smaller than 0.05 (Table 2). This indicates that the evolutionary rate of sugar transport gene families is different between grasses and eudicots.



**Figure 4.** Differences in  $\omega$  values of *SUT* and *HK* gene subfamilies between grasses and eudicots. Black and white columns correspond to  $\omega$  values of gene subfamilies in eudicots and grasses, respectively. Error bars correspond to SE of means. \* $P < 0.05$ ; \*\* $P < 0.01$ .

Gene family/subfamily	Null hypothesis		Alternative hypothesis			LRT	
	-ln L	$\omega$	-ln L	$\omega$ (grass)	$\omega$ (eudicot)	Statistic	<i>P</i>
HK	11783.30	0.10	11785.01	0.10	0.13	3.42	0.18
NI	16479.90	0.06	16479.89	0.06	0.07	0.01	1.00
SPS	19549.54	0.10	19549.53	0.10	0.14	0.01	1.00
SUSY	23700.03	0.09	23700.04	0.08	0.09	0.01	1.00
<i>SUT</i> type1	10101.69	0.12	100094.07	N/A	0.14	15.23	4.93e-4
<i>SUT</i> type2	5594.01	0.29	5599.79	0.14	0.48	11.55	3.10e-3
<i>SUT</i> type4	4056.79	0.35	4107.06	0.10	0.76	100.54	<1.00e-12
PMT	13163.31	0.11	13172.08	0.14	0.07	17.55	1.54e-4
STP	13959.40	0.07	13903.48	0.11	0.05	111.84	<1.00e-12
ERD6-like	10500.44	0.56	10614.28	0.33	0.14	227.67	<1.00e-12
pGlcT	10476.77	0.11	10480.65	0.14	0.11	7.76	2.07e-2
INT	7717.63	0.08	7722.22	0.10	0.03	9.18	1.02e-2
TMT	11508.87	0.11	11308.87	0.11	0.16	400.00	<1.00e-12
VGT	9974.43	0.14	9797.18	0.13	0.15	6.01	0.05

**Table 2.** Likelihood-ratio test (LRT) statistic and parameters from Branch Model of PAML.

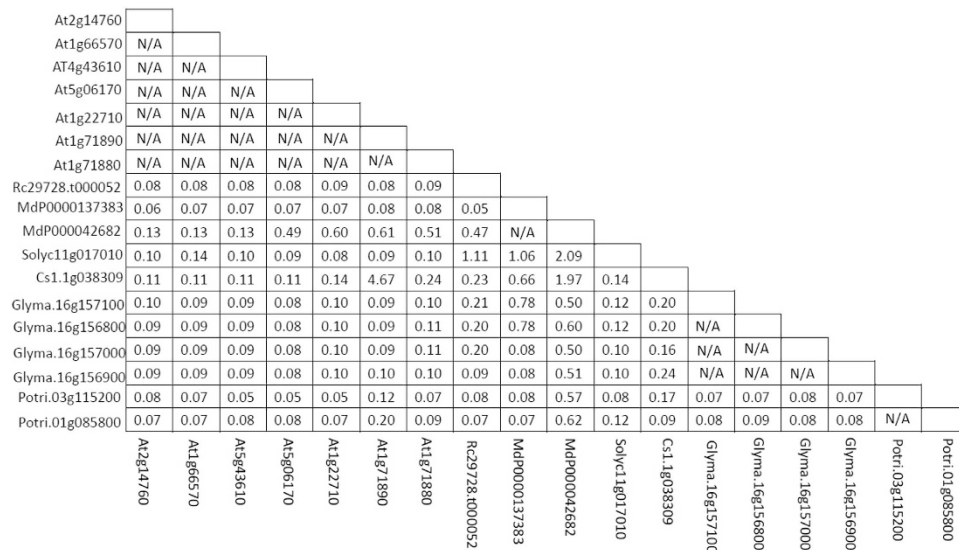
In addition, we compared the  $\omega$  values between members within the *SUT1* clade. Interestingly, all the  $\omega$  values in three fruit crops, *S. lycopersicum*, *C. sinensis*, *Malus × domestica*, were higher than 1.0 (Fig. 5). This suggests that *SUT1* in these three fruit crops has higher evolutionary rates compared with other eudicots investigated in this study.

#### A Divergent Selection of Sugar Transporter Gene Families Observed in Grasses versus Eudicots.

To assess the potential for selection of genes involved in sugar metabolism and transport, the Fitmodel software was used to conduct selection analysis with both M3 and M3 + S1 models<sup>45</sup>, and the sites under positive selection for each gene family were compared between grasses and eudicots. Parameter estimates for selection analysis were found to be similar between M3 and M3 + S1 models (Table 3), thus, only results from M3 + S1 model analysis was presented.

Overall, more than 85% of sites (p1 and p2) in all tested genes, except for *NI*, were identified to be under purifying selection with  $\omega_1 \leq 0.18$  and  $\omega_2 \leq 0.87$ . Moreover, 1% to 15% of identified sites (p3) within ten sugar transporter genes (*SUT1*, *SUT2*, *SUT4*, *STP*, *VGT*, *TMT*, *PMT*, *pGlcT*, *ERD6-like*, and *INT*) and one sugar metabolism gene *NI* were identified to be under positive selection with an  $\omega_3$  value  $> 1.0$ . Among these positive selection sites, the number of sites for genes in *SUT1*, *SUT2*, *TMT*, *PMT*, *VGT*, *pGlcT*, *ERD6-like*, and *INT* gene families were significantly asymmetric across both grasses and eudicots (Table 4). This suggests that selection is mainly located either in the grass or eudicot subclade of the phylogenetic tree, thus providing a key evidence of the incidence of divergent selection between grasses and eudicots.

**Type II Functional Divergence after Gene Duplication.** The coefficient of type II functional divergence ( $\theta$ ) between any two clusters was calculated using DIVERGE v3.0. For sugar transport gene families, non-orthologous clusters had  $\theta$ -II values that were significantly larger than 0, but not for orthologous clusters



**Figure 5.** Estimation of  $\omega$  values for the *SUT1* subfamily using the ML method. Values higher than one are highlighted in black bold.

Model Parameter	Gene family/subfamily														
	<i>SUT1</i>	<i>SUT2</i>	<i>SUT4</i>	<i>VGT</i>	<i>STP</i>	<i>TMT</i>	<i>PMT</i>	<i>INT</i>	<i>pGlcT</i>	<i>ERD6-like</i>	<i>HK</i>	<i>NI</i>	<i>SUSY</i>	<i>SPS</i>	
M3	-ln L	14922.22	24210.88	7853.05	23354.78	15805.81	61719.92	51067.07	31257.70	19149.30	16142.70	63731.74	66066.34	73873.57	84870.00
	p1	0.38	0.21	0.20	0.37	0.46	0.15	0.17	0.03	0.06	0.44	0.32	0.08	0.15	0.14
	p2	0.39	0.49	0.60	0.35	0.35	0.50	0.48	0.63	0.67	0.39	0.35	0.47	0.37	0.46
	p3	0.23	0.30	0.21	0.28	0.18	0.35	0.35	0.34	0.27	0.17	0.33	0.46	0.48	0.40
	$\omega_1$	0.02	0.14	0.14	0.02	0.01	0.12	0.07	0.23	0.35	0.01	0.22	0.31	0.06	0.06
	$\omega_2$	0.27	0.77	2.74	0.24	0.14	0.83	0.47	1.97	1.98	0.15	0.16	1.41	0.50	0.52
	$\omega_3$	0.95	2.14	20.00	0.95	1.57	1.77	1.22	4.38	5.28	0.56	0.42	3.38	0.70	0.79
M3 + S1	-ln L	14891.35	24166.60	7857.14	23250.22	15728.80	61624.07	50952.59	31239.20	19145.40	16035.70	63271.47	65900.66	73744.10	84666.08
	p1	0.44	0.20	0.20	0.50	0.58	0.18	0.22	0.05	0.06	0.60	0.41	0.09	0.20	0.20
	p2	0.34	0.50	0.60	0.35	0.31	0.53	0.52	0.67	0.67	0.36	0.34	0.52	0.35	0.48
	p3	0.23	0.30	0.20	0.15	0.10	0.28	0.26	0.28	0.27	0.29	0.25	0.39	0.45	0.32
	$\omega_1$	0.00	0.02	0.12	0.01	0.00	0.03	0.03	0.12	0.18	0.00	0.00	0.06	0.03	0.01
	$\omega_2$	0.28	0.72	2.76	0.39	0.24	0.87	0.53	2.03	1.94	0.02	0.16	1.35	0.51	0.55
	$\omega_3$	1.13	2.32	20.00	1.78	1.80	2.08	1.61	5.40	5.66	2.02	0.64	4.14	0.95	0.98

**Table 3.** Estimation of likelihood ratios of gene families related to sugar metabolism and transport using the M3 and M3 + S1 Models in Fitmodel.

(Table 5, Supplementary Table S2). However, such a pattern was not observed between any two clusters of sugar metabolic gene families (Supplementary Table S2). This suggests that type II functional divergence may occur between sugar transport gene subfamilies.

## Discussion

In this study, evolutionary features such as duplication patterns, evolutionary rates, and positive selection have been investigated for twelve gene families involved in sugar metabolism and transport in plants, including *HK*, *NI*, *SPS*, *SUSY*, *PMT*, *STP*, *SUT*, *TMT*, *VGT*, *pGlcT*, *ERD6-like*, and *INT*. Overall, sugar transporter gene families have demonstrated divergent evolutionary pattern between grasses and eudicots, whereas, sugar metabolism gene families have revealed similar evolutionary patterns between grasses and eudicots. For example, the *SUT1* clade is found to be exclusively present in eudicots, and *SUT2* genes show high frequencies of old gene duplication in grasses than in eudicots. Moreover, *STP* genes exhibit higher frequency of recent duplication in eudicots than in grasses, whereas, they show higher frequency of old duplication in grasses than in eudicots. In addition, both *SUT2* and *SUT4* gene families in grasses have faster evolutionary rates than in eudicots. Given the fact that sugar accumulation in seeds and/or pericarps is significantly different between grasses and eudicots, we hypothesize that this observed difference is associated with divergent evolutionary patterns of sugar transporter gene families.



Gene family	Grass-specific	Eudicot-specific
<i>SUT1</i>	N/A	27, 245, 260, 266, 346, 403, 409, 411, 414, 425
<i>SUT2</i>	N/A	97, 211, 356, 411, 477, 541
<i>SUT4</i>	N/A	N/A
<i>VGT</i>	N/A	N/A
<i>STP</i>	N/A	N/A
<i>TMT</i>	N/A	272, 552, 841, 864
<i>PMT</i>	N/A	36, 38, 82, 87, 92, 504, 522, 632
<i>HK</i>	N/A	20, 29, 34, 61, 67, 70, 74, 83, 89, 179, 180, 181
<i>NI</i>	67, 70, 71, 92, 128, 129, 131, 134, 149, 155, 156, 163, 180, 182, 183, 192, 193, 194, 195, 203, 223, 348, 736	109, 111, 112, 124, 137, 145, 153, 156, 157, 168–171, 180, 181, 183, 190, 200, 203, 218, 219, 221, 222, 226, 231, 254–257, 262, 263, 266, 271, 277–279, 681, 718
<i>SUSY</i>	N/A	120, 135, 1455, 1492, 1674, 1677, 1678, 1679
<i>SPS</i>	82, 110–112, 115, 133, 266, 449, 514, 528, 552, 669, 798, 805, 881, 932, 995, 1003, 1049, 1061, 1064, 1068, 1070, 1088, 1092, 1094, 1099, 1102, 1104, 1129, 1132, 1142, 1148, 1180, 1181, 1182, 1229, 1232, 1235, 1238, 1242, 1251, 1254, 1256, 1282, 1303, 1304, 1305, 1310, 1329, 1324	22, 37, 41, 42, 68, 73, 90, 104, 121, 135, 136, 139, 140, 167, 170, 176–178, 181–183, 297, 313, 338, 362, 398, 429, 463, 467, 491, 505, 535, 541, 552, 554, 557, 560, 585, 601, 638, 809, 814, 827, 833, 841, 851, 869, 873, 874, 878, 891, 892, 899–901, 904, 905, 912, 914, 915, 927, 928, 929, 937, 938, 947, 951, 955, 959, 962, 964, 967, 968, 972, 976, 978, 983, 985–987, 998, 1009, 1011, 1023, 1024, 1046, 1047, 1058–1060, 1064, 1069, 1071, 1073, 1089, 1091, 1096, 1150, 1176, 1178, 1199, 1205–1208, 1210–1214, 1217, 1227, 1231
<i>INT</i>	N/A	25, 78–82, 123, 124, 137, 148, 157, 172–181, 225, 361, 463, 491, 535–542
<i>pGlcT</i>	N/A	68, 87, 94, 99, 103, 116, 129, 130, 482, 576, 608
<i>ERD6-like</i>	N/A	29, 38, 61, 74, 89, 137.233, 231, 429

**Table 4. Estimation of positive sites in gene families related to sugar metabolism and transport using the M3 + S1 Model in Fitmodel.**

### Hypothesis 1 - Gene Duplication of Sugar Transporters Contributes to Sugar Accumulation in Eudicots.

In this study, almost all analyzed transporter genes in eudicots, including *PMT*, *STP*, *SUT*, *TMT*, *VGT*, *pGlcT*, *ERD6-like*, and *INT*, have undergone one or more rounds of duplication in eudicots (Table 1, Fig. 3, and supplementary Fig. S2). The *SUT* genes serve as a typical example of this finding as they have undergone duplication eighteen times in eudicots.

In plants, the *SUT* gene family encodes sucrose/H<sup>+</sup> symporters, and it consists of three types, termed *SUT1*, *SUT2* and *SUT4*<sup>50–53</sup>. In this study, the *SUT1* subfamily is found to be present exclusively in eudicots. Previous studies show that both *SUT1* and *SUT2* proteins are localized to plasma membrane<sup>54,55</sup>, while *SUT4* protein is localized to vacuolar membrane<sup>56,57</sup>. The *SUT1* genes are expressed in both source and sink tissues and play essential functions such as those of phloem loading and increasing sucrose uptake into sink storage tissues<sup>58–62</sup>. On the other hand, *SUT2* genes are mainly expressed in sink tissues and function in phloem loading<sup>63–66</sup>. Whereas, *SUT4* genes show variable patterns of expression in different plant species and function in sucrose uptake from the vacuole into the cytoplasm<sup>61–69</sup>. In higher plants, it is commonly known that sucrose is the main mobile carbohydrate. *SUT1* genes exhibit very high affinity and transport ability with sucrose<sup>70–73</sup>, while *SUT2* and *SUT4* genes have no or low affinity for sucrose<sup>55,74–77</sup>. Moreover, both *SUT2* and *SUT4* genes are not reported to increase sucrose uptake into the sink storage tissues. Thus, the *SUT1* subfamily is deemed critical for sugar transport and its duplication is likely to be associated with observed high levels of sugar accumulation in eudicots. In turn, loss of the *SUT1* subfamily in grasses is probably one of the main causes leading to observed differences of sugar accumulation in storage tissues between grasses and eudicots.

In this study, it is found that *SUT2* genes, unlike *SUT1* genes, show high frequencies of old duplication in grasses, but no duplication detected in eudicots. *SUT2* genes are reported as potential candidates for starch accumulation<sup>55</sup>. Thus, duplication of *SUT2* genes may contribute to starch accumulation in grasses.

Besides the *SUT* gene family, the *STP* gene family also functions as sugar transporters<sup>69,78–80</sup>. The *STP* gene family, also known as hexose transporters (HTs), is located in the plasma membrane, functions as monosaccharide/proton symporter, and plays an important role in monosaccharide import into sink cells<sup>80</sup>. In fruits, several studies have demonstrated that the *STP* gene family plays important roles in sugar accumulation<sup>81–83</sup>. In this study, the *STP* gene family is found to show differences in duplication patterns between eudicots and grasses. In grasses, the *STP* gene family has undergone four duplications in ancient times, but six duplications in recent times. In eudicots, the *STP* gene family has undergone only one duplication in ancient times, but has also undergone 34 recent duplications as well. Interestingly, the duplication of the *STP* gene family in recent times has reached as high as 24 times in three fruit crops, apple, tomato, and orange. This suggests that gene duplication of the *STP* subfamily may also contribute to sugar accumulation in eudicots. In addition, the rest six transporter gene families, *PMT*, *TMT*, *VGT*, *pGlcT*, *ERD6-like*, and *INT*, show similar duplication patterns to *SUT* and *STP* gene families, which suggests that they are may also play important roles in sugar accumulation. However, sugar metabolism genes, unlike sugar transporter genes, show no significant differences in gene duplication patterns between grasses and eudicots (Fig. S2), thus indicating that they are unlikely responsible for observed differences in sugar accumulation between eudicots and grasses.

Taken together, all these findings support our hypothesis that sugar transporter gene duplication plays an important role in sugar accumulation in eudicots. In addition, our study reveals that functional divergence may

Gene	Subfamily I	Subfamily II	$\theta$ -II value
<i>SUT</i>	Eudicot subfamily 1	Eudicot subfamily 2	0.32 ± 0.15
		Eudicot subfamily 3	0.31 ± 0.14
		Grass subfamily 1	0.21 ± 0.15
		Grass subfamily 2	0.22 ± 0.15
		Grass subfamily 3	0.36 ± 0.14
		Grass subfamily 4	0.35 ± 0.14
		Grass subfamily 5	0.29 ± 0.14
	Eudicot subfamily 2	Eudicot subfamily 3	0.26 ± 0.11
		Grass subfamily 1	0.02 ± 0.11
		Grass subfamily 2	0.17 ± 0.11
		Grass subfamily 3	0.28 ± 0.11
		Grass subfamily 4	0.26 ± 0.11
		Grass subfamily 5	0.29 ± 0.11
	Eudicot subfamily 3	Grass subfamily 1	0.32 ± 0.08
		Grass subfamily 2	0.05 ± 0.07
		Grass subfamily 3	0.17 ± 0.09
		Grass subfamily 4	0.14 ± 0.08
		Grass subfamily 5	0.14 ± 0.08
	Grass subfamily 1	Grass subfamily 2	0.35 ± 0.06
		Grass subfamily 3	0.38 ± 0.08
		Grass subfamily 4	0.34 ± 0.07
		Grass subfamily 5	0.38 ± 0.07
	Grass subfamily 2	Grass subfamily 3	0.19 ± 0.08
		Grass subfamily 4	0.18 ± 0.07
		Grass subfamily 5	0.19 ± 0.06
	Grass subfamily 3	Grass subfamily 4	0.21 ± 0.08
		Grass subfamily 5	0.22 ± 0.08
	Grass subfamily 4	Grass subfamily 5	0.08 ± 0.07

**Table 5. Estimation of type II functional divergence ( $\theta$ ) using the Type II of DIVERGE software.**

occur after gene duplication between sugar transport gene subfamilies. More experiments are needed to clarify the roles of sugar transport gene subfamilies in sugar accumulation.

**Hypothesis 2 - Evolutionary Rate Patterns of Sugar Transporters are Associated with Differences in Sugar Accumulation between Eudicots and Grasses.** The  $\omega$  value is an important index of genetic differentiation. In this study, both one-ratio model and a branch model were conducted to estimate the  $\omega$  value, and the likelihood of these two models was compared using LRT statistic. The result reveals that evolutionary rates of most sugar transporter gene families are significantly different between grasses and eudicots. In contrast, no significant difference is observed for most sugar metabolism gene families between grasses and eudicots (Table 2). Among all tested genes in this study, those with  $\omega > 1$  are exclusively found in the *SUT1* subfamily. Interestingly, all *SUT1* genes with  $\omega > 1$  are derived from fruit crops, including apple, orange, and tomato (Fig. 5). This indicates that *SUT1* genes in fruit crops have faster evolutionary rates than those in other eudicot species. As fruits are rich in sugars, we hypothesize that faster evolutionary rates of *SUT1* genes contribute to sugar accumulation in eudicots.

In grasses, the *SUT2* clade consist of four subfamilies. In addition, grass subfamily 2 has an orthologous relationship with the eudicot subfamily 3. The  $\omega$  value for grass subfamily 2 is significantly higher than that for the eudicot subfamily 3. Similarly, *SUT4* genes have significantly higher  $\omega$  values in grasses than those found in eudicots. These results suggest that both *SUT2* and *SUT4* genes have significantly different evolutionary rates between grasses and eudicots. Several studies have reported that *SUT2* is a sucrose sensor that can interact with *SUT1* and/or *SUT4* to regulate their relative activities<sup>55,75,84</sup>. Thus, the evolutionary rates of both *SUT2* and *SUT4* genes are also likely associated with sugar accumulation in plants.

As with *SUT* genes, other sugar transporter genes, such as *STP*, *VGT*, *PMT*, *TMT*, *pGlcT*, *ERD6-like*, and *INT*, have shown significant differences in  $\omega$  values between grasses and eudicots. In a recent study, it is reported that rapid evolution of starch pathway genes contributes to starch accumulation in grasses<sup>20</sup>. Therefore, it is most likely that the evolutionary rate of sugar transporter gene families has influences on sugar accumulation in plants.

Unlike sugar transporter gene families, almost all gene families involved in sugar metabolism, except for *HK4*, show no significant differences in  $\omega$  values between grasses and eudicots. The *HK* gene is responsible for hexose phosphorylation, and plays a vital role in plant sugar sense and sugar signal transduction<sup>85–87</sup>. The *HK* protein is localized in different organelles, including cell cytosol, chloroplastid, chondriosome, plasmid, and golgiosome<sup>88,89</sup>. In an earlier study, it has been demonstrated that the *HK4* gene is incapable of catalyzing

phosphorylation of hexoses, such as glucose or fructose<sup>87</sup>. Thus, it is clear that the patterns of evolutionary rates of *HK* genes involved in hexose phosphorylation are not associated with observed differences in sugar accumulation between grasses and eudicots. Such a phenomenon is quite commonly observed in genes involved in sugar metabolism (supplementary Table S1).

In this study, positive selection analysis has revealed that sites with  $\omega_3$  values higher than one have been identified for all analyzed transport genes. However, positive selection sites are present exclusively in sugar transporter gene families in eudicots. This finding also demonstrates that sugar transporter genes are likely associated with high levels of sugar accumulation in eudicots.

In conclusion, sugar transporter genes rather than sugar metabolism genes play important roles in sugar accumulation in plants, and differences in sugar accumulation in storage tissues between grasses and eudicots may be attributed to at least three reasons as follows: 1) sugar transporter genes have higher frequencies of recent duplications in eudicots rather than in grasses; 2) patterns of evolutionary rates of sugar transporter genes are different between grasses and eudicots; and 3) sugar transporter genes have undergone positive selection in eudicots, but not in grasses. In short, divergent evolutionary patterns of sugar transporter genes are responsible for differences in sugar accumulation between grasses and eudicots. However, molecular mechanisms underlying the evolutionary divergence of sugar transporter genes between grasses and eudicots remain unclear.

As mentioned above, the *SUT* gene family highly influences sugar accumulation in plants, especially in fruit crops. During fruit development, sucrose is imported into the fruit, and it is subsequently cleaved into glucose and fructose. These latter sugar components not only contribute to fruit sweetness, but they can also be used as sources of energy for fruit growth. By increasing the uptake of sucrose into developing fruits, this may contribute to increased levels of sugar content in mature fruits. Therefore, manipulation of *SUT* genes may lead to enhanced sugar content in fruit crops.

## References

- Sreenivasulu, N. & Wobus, U. Seed-development programs: a systems biology-based comparison between dicots and monocots. *Annu Rev Plant Biol.* **64**, 189–217 (2013).
- Sreenivasulu, N. *et al.* Transcript profiles and deduced changes of metabolic pathways in maternal and filial tissues of developing barley grains. *Plant J.* **37**, 539–553 (2004).
- Halford, N. G., Curtis, T. Y., Muttucumar, N., Postles, J. & Mottram, D. S. Sugars in crop plants. *Ann. Appl. Biol.* **158**, 1–25 (2011)
- Martinoia, E., Meyer, S., De Angeli, A. & Nagy, R. Vacuolar transporters in their physiological context. *Annu. Rev. Plant Biol.* **63**, 183–213 (2012).
- Büttner, M. The monosaccharide transporter(-like) gene family in *Arabidopsis*. *FEBS Lett.* **581**, 2318–2324 (2007).
- Ngampanya, B., Takeda, T., Narangajavana, J., Ikeda, A. & Yamaguchi, J. Sugar transporters involved in flowering and grain development of rice. *J Appl Glycosci.* **50**, 237–240 (2003).
- Granot, D., David-Schwartz, R. & Kelly-Frontiers, G. Hexose kinases and their role in sugar-sensing and plant development. *Front. Plant Sci* **44**, 1–17 (2013).
- Siswoyo, T. A., Oktavianawatia, I., Djenala, Murdiyantob, U. & Sugihartoa, B. Changes of sucrose content and invertase activity during sugarcane stem storage. *J. Agr. Sci.* **8**, 75–81 (2013).
- Tognetti, J. A., Pontis, H. G. & Martínez-Noël, G. M. A. Sucrose signaling in plants. *Plant Signal. Behav.* **8**, e23316 (2013).
- Dale, E. M. D. & Housley, T. L. Sucrose synthase activity in developing wheat endosperms differing in maximum weight. *Plant Physiol.* **82**, 7–10 (1986).
- Sun, J., Loboda, T., Sung, S. J. S. & Black, C. C. Sucrose synthase in wild tomato, *Lycopersicon chmielewskii*, and tomato fruit sink strength. *Plant Physiol.* **98**, 1163–1169 (1992).
- Klann, E. M., Hall, B. & Bennett, A. B. Antisense acid invertase (TW7) gene alters soluble sugar composition and size in transgenic tomato fruit. *Plant Physiol.* **112**, 1321–1330 (1996).
- D'Aoust, M. A., Yelle, S. & Quoc, B. N. Antisense inhibition of tomato fruit sucrose synthase decrease fruit setting and the sucrose unloading capacity of young fruit. *Plant Cell* **11**, 2407–2418 (1999).
- Baroja-Fernandez, E. *et al.* Enhancing sucrose synthase activity in transgenic potato (*Solanum tuberosum* L.) tubers results in increased levels of starch, ADP glucose and UDP glucose and total yield. *Plant Cell Physiol.* **50**, 1651–1662 (2009).
- Davies, C., Wolf, T. & Robinson, S. P. Three putative sucrose transporters are differentially expressed in grapevine tissues. *Plant Sci.* **147**, 93–100 (1999).
- Martinoia, E., Meyer, S., De Angeli, A. & Nagy, R. Vacuolar transporters in their physiological context. *Annu. Rev. Plant Biol.* **63**, 183–213 (2012).
- Lecourieux, F. *et al.* An update on sugar transport and signalling in grapevine. *J. Exp. Bot.* **65**, 821–832 (2014).
- Yu, G. Q., Olsen, K. M. & Schaal, B. A. Molecular evolution of the endosperm starch synthesis pathway genes in rice (*Oryza sativa* L.) and its wild ancestor, *O. rufipogon* L. *Mol. Biol. Evol.* **28**, 659–671 (2011).
- Li, C., Li, Q. G., Dunwell, J. M. & Zhang, Y. M. Divergent evolutionary pattern of starch biosynthetic pathway genes in grasses and dicots. *Mol. Biol. Evol.* **29**, 3227–3236 (2012).
- Eom, J. S. *et al.* SWEETs, transporters for intracellular and intercellular sugar translocation. *Curr. Opin. Plant Biol.* **25**, 53–62 (2015).
- Chen, L. Q. *et al.* Sucrose efflux mediated by SWEET proteins as a key step for phloem transport. *Science* **335**, 207–211 (2012).
- Chong, J. *et al.* The SWEET family of sugar transporters in grapevine: VvSWEET4 is involved in the interaction with *Botrytis cinerea*. *J. Exp. Bot.* **65**, 6589–6601 (2014).
- Chen, H. Y. *et al.* The Arabidopsis vacuolar sugar transporter SWEET2 limits carbon sequestration from roots and restricts Pythium infection. *Plant J.* **83**, 1046–1058 (2015).
- Hutin, M., Sabot, F., Ghesquière, A., Koebnik, R. & Szurek, B. A knowledge-based molecular screen uncovers a broad-spectrum OsSWEET14 resistance allele to bacterial blight from wild rice. *Plant J.* **84**, 694–703 (2015).
- Chen, L. Q. *et al.* Sugar transporters for intercellular exchange and nutrition of pathogens. *Nature* **468**, 527–532 (2010).
- Ruan, Y. & Patrick, J. W. The cellular pathway of postphloem sugar transport in developing tomato fruit. *Planta* **196**, 434–444 (1995).
- Tatusov, R. L., Galperin, M. Y., Natale, D. A. & Koonin, E. V. The COG database: a tool for genome-scale analysis of protein functions and evolution. *Nucleic. Acids Res.* **28**, 33–36 (2000).
- International Brachypodium Initiative. Genome sequencing and analysis of the model grass *Brachypodium distachyon*. *Nature* **463**, 763–768 (2010).
- Ouyang, S. *et al.* The TIGR Rice Genome Annotation Resource: improvements and new features. *Nucleic. Acids Res.* **35**, D883–D887 (2007).
- Bennetzen, J. L. *et al.* Reference genome sequence of the model plant *Setaria*. *Nature Biotechnol.* **30**, 555–561 (2012).
- Paterson, A. H. *et al.* The Sorghum bicolor genome and the diversification of grasses. *Nature* **457**, 551–556 (2009).
- Schnable, P. S. *et al.* The B73 maize genome: complexity, diversity, and dynamics. *Science* **326**, 1112–1115 (2009).

33. Lamesch, P. *et al.* The Arabidopsis Information Resource (TAIR): improved gene annotation and new tools. *Nucleic. Acids Research* **40**, 1202–1210 (2013).
34. Wu, G. A. *et al.* Sequencing of diverse mandarin, pummelo and orange genomes reveals complex history of admixture during citrus domestication. *Nature Biotechnol.* **32**, 656–662 (2014).
35. Velasco, R. *et al.* The genome of the domesticated apple (*Malus × domestica* Borkh.). *Nat. Genet.* **42**, 833–839 (2010).
36. Schmutz, J. *et al.* Genome sequence of the palaeopolyploid soybean. *Nature*. **463**, 178–183 (2010).
37. Chan, A. P. *et al.* Draft genome sequence of the oilseed species *Ricinus communis*. *Nature Biotechnol.* **28**, 951–956 (2010).
38. Tomato Genome Consortium. The tomato genome sequence provides insights into fleshy fruit evolution. *Nature* **485**, 635–641 (2012).
39. Tuskan, G. A. *et al.* The genome of black cottonwood, *Populus trichocarpa* (Torr. & Gray). *Science* **313**, 1596–1604 (2006).
40. Galtier, N., Gouy, M. & Gautier, C. SEAVIEW and PHYLO\_WIN: two graphic tools for sequence alignment and molecular phylogeny. *Comput. Appl. Biosci.* **12**, 543–548 (1996).
41. Tamura, K., Stecher, G., Peterson, D., Filipiński, A. & Kumar, S. MEGA6: molecular evolutionary genetics analysis version 6.0. *Mol. Biol. Evol.* **30**, 2725–2729 (2013).
42. Yang Z. PAML 4: phylogenetic analysis by maximum likelihood. *Mol Biol Evol.* **24**, 1586–1591 (2007).
43. Zhang, Z. & Li, J. & Yu, J. Computing Ka and Ks with a consideration of unequal transitional substitutions. *BMC Evol. Biol.* **6**, 44 (2006).
44. Zhang, Z. & Yu, J. Evaluation of six methods for estimating synonymous and nonsynonymous substitution rates. *Genomics Proteomics Bioinformatics* **4**, 173–181 (2006).
45. Guindon, S., Rodrigo, A. G., Dyer, K. A. & Huelsenbeck, J. P. Modeling the site-specific variation of selection patterns along lineages. *Proc. Natl. Acad. Sci.* **101**, 12957–12962 (2004).
46. Yang, Z. & Nielsen, R. Codon-substitution models for detecting molecular adaptation at individual sites along specific lineages. *Mol. Biol. Evol.* **19**, 908–917 (2002).
47. Gu, X. Maximum likelihood approach for gene family evolution under functional divergence. *Mol. Biol. Evol.* **18**, 453–464 (2001).
48. Sauer, N. *et al.* AtSUC8 and AtSUC9 encode functional sucrose transporters but the closely related AtSUC6 and At-SUC7 genes encode aberrant proteins in different *Arabidopsis* ecotypes. *Plant J.* **40**, 120–130 (2004).
49. Taylor, J. S. & Raes, J. Duplication and divergence: the evolution of new genes and old ideas. *Annu. Rev. Genet.* **38**, 615–643 (2004).
50. Kühn, C. *et al.* The sucrose transporter StSUT1 localizes to sieve elements in potato tuber phloem and influences tuber physiology and development. *Plant Physiol.* **131**, 102–113 (2003).
51. Sauer, N. Molecular physiology of higher plant sucrose transporters. *FEBS. Lett.* **581**, 2309–2317 (2007).
52. Shiratake, K. Genetics of sugar transporter in plants. *G3: Genes Genomes Genomics.* **1**, 73–80 (2007).
53. Kühn, C. & Grof, C. P. L. Sucrose transporters of higher plants. *Curr. Opin. Plant Biol.* **13**, 287–297 (2010).
54. Kühn, C., Franceschi, V. R., Schulz, A., Lemoine, R. & Frommer, W. B. Macromolecular trafficking indicated by localization and turnover of sucrose transporters in enucleate sieve elements. *Science* **275**, 1298–1300 (1997).
55. Barker, L. *et al.* SUT2, a putative sucrose sensor in sieve elements. *Plant Cell* **12**, 1153–1164 (2000).
56. Payyavula, R. S., Tay, K. H., Tsai, C. J. & Harding, S. A. The sucrose transporter family in *Populus*: the importance of a tonoplast PtaSUT4 to biomass and carbon partitioning. *Plant J.* **65**, 757–770 (2011).
57. Schneider, S. *et al.* Vacuoles release sucrose via tonoplast-localised SUC4-type transporters. *Plant Biol.* **14**, 325–336 (2012).
58. Riesmeier, J. W., Willmitzer, L. & Frommer, W. B. Evidence for an essential role of the sucrose transporter in phloem loading and assimilate partitioning. *EMBO J.* **13**, 1–7 (1994).
59. Rosche, E. *et al.* Seed-specific overexpression of a potato sucrose transporter increases sucrose uptake and growth rates of developing pea cotyledons. *Plant J.* **30**, 165–175 (2002).
60. Leggewie, G. *et al.* Overexpression of the sucrose transporter SoSUT1 in potato results in alterations in leaf carbon partitioning and in tuber metabolism but has little impact on tuber morphology. *Planta.* **217**, 158–167 (2003).
61. Geiger, D. Plant sucrose transporters from a biophysical point of view. *Mol. Plant* **4**, 395–406 (2011).
62. Reinders, A. *et al.* Protein-protein interactions between sucrose transporters of different affinities colocalized in the same enucleate sieve element. *Plant Cell* **14**, 1567–1577 (2002).
63. Shakya, R. & Sturm, A. Characterization of source- and sink-specific sucrose/H<sup>+</sup> symporters from carrot. *Plant Physiol.* **118**, 1473–1480 (1998).
64. Meyer, S. *et al.* AtSUC3, a gene encoding a new *Arabidopsis* sucrose transporter, is expressed in cells adjacent to the vascular tissue and in a carpel cell layer. *Plant J.* **24**, 869–882 (2000).
65. Hackel, A. *et al.* Sucrose transporter LeSUT1 and LeSUT2 inhibition affects tomato fruit development in different ways. *Plant J.* **45**, 180–192 (2006).
66. Slewinski, T. L., Meeley, R. & Braun, D. M. Sucrose transporter 1 functions in phloem loading in maize leaves. *J. Exp. Bot.* **60**, 881–892 (2009).
67. Endler, A. *et al.* Identification of a vacuolar sucrose transporter in barley and *Arabidopsis* mesophyll cells by a tonoplast proteomic approach. *Plant Physiol.* **141**, 196–207 (2006).
68. Reinders, A., Sivitz, A. B., Starker, C. G., Gantt, J. S. & Ward, J. M. Functional analysis of LjSUT4, a vacuolar sucrose transporter from *Lotus japonicus*. *Plant Mol. Biol.* **68**, 289–299 (2008).
69. Schulz, A. *et al.* Proton-driven sucrose symport and antiport are provided by the vacuolar transporters SUC4 and TMT1/2. *Plant J.* **68**, 129–136 (2011).
70. Bock, K. W. *et al.* Integrating membrane transport with male gametophyte development and function through transcriptomics. *Plant Physiol.* **140**, 1151–1168 (2006).
71. Sivitz, A. B. *et al.* *Arabidopsis* sucrose transporter AtSUC9, high-affinity transport activity, intragenic control of expression, and early flowering mutant phenotype. *Plant Physiol.* **143**, 188–198 (2007).
72. Sivitz, A. B., Reinders, A. & Ward, J. M. *Arabidopsis* sucrose transporter AtSUC1 is important for pollen germination and sucrose-induced anthocyanin accumulation. *Plant Physiol.* **147**, 92–100 (2008).
73. Srivastava, A. C., Ganesan, S., Ismail, I. O. & Ayre, B. G. Functional characterization of the *Arabidopsis* AtSUC2 sucrose/H<sup>+</sup> symporter by tissue-specific complementation reveals an essential role in phloem loading but not in longdistance transport. *Plant Physiol.* **148**, 200–211 (2008).
74. Schulze, W., Weise, A., Frommer, W. B. & Ward, J. M. Function of the cytosolic N-terminus of sucrose transporter AtSUT2 in substrate affinity. *FEBS Lett.* **485**, 189–194 (2000).
75. Weise, A. *et al.* A new subfamily of sucrose transporters, SUT4, with low affinity/high capacity localized in enucleate sieve elements of plants. *Plant Cell* **12**, 1345–1356 (2000).
76. Reinders, A., Sivitz, A. B. & Ward, J. M. Evolution of plant sucrose uptake transporters. *Front. Plant Sci.* **3**, 22 (2012).
77. Barth, I., Meyer, S. & Sauer, N. PmsUC3: characterization of a SUT2/SUC3-type sucrose transporter from *Plantago major*. *Plant Cell* **15**, 1375–1385 (2003).
78. Truernit, E., Schmid, J., Eppele, P., Illig, J. & Sauer, N. The sink-specific and stress regulated *Arabidopsis* gene: enhanced expression of a gene encoding a monosaccharide transporter by wounding, elicitors, and pathogen challenge. *Plant Cell* **8**, 2169–2182 (1996).
79. Nørholm, M. H. H. *et al.* Expression of the *Arabidopsis* high-affinity hexose transporter STP13 correlates with programmed cell death. *FEBS letters.* **9**, 2381–2387 (2006).

80. Büttner, M. The Arabidopsis sugar transporter (AtSTP) family: an update. *Plant Biol.* **12**, 35–41 (2010).
81. Hayes, M. A., Davies, C. & Dry, I. B. Isolation, functional characterization, and expression analysis of grapevine (*Vitis vinifera* L.) hexose transporters: differential roles in sink and source tissues. *J. Exp. Bot.* **58**, 1985–1997 (2007).
82. Vignault, C. *et al.* VvHT1 encodes a monosaccharide transporter expressed in the conducting complex of the grape berry phloem. *J. Exp. Bot.* **56**, 1409–1418 (2005).
83. McCurdy, D. W., Dibley, S., Cahyanegara, R., Martin, A. & Patrick, J. W. Functional characterization and RNAi-mediated suppression reveals roles for hexose transporters in sugar accumulation by tomato fruit. *Mol. Plant* **3**, 1049–1063 (2010).
84. Riesmeier, J. W., Willmitzer, L. & Frommer, W. B. Isolation and characterization of a sucrose carrier cDNA from spinach by functional expression in yeast. *EMBO J.* **11**, 4705–4713 (1992).
85. Halford, N. G., Purcell, P. C. & Hardie, D. G. Is hexokinase really a sugar sensor in plants? *Trends Plant Sci.* **4**, 117–120 (1999).
86. Loreti, E., Bellis, L. D., Alpi, A. & Perata, P. Why and how do plant cells sense sugars? *Ann. Bot.* **88**, 803–812 (2001).
87. Cho, J. I. *et al.* Role of the rice hexokinases *OsHXK5* and *OsHXK6* as glucose sensors. *Plant Physiol.* **149**, 745–759 (2009).
88. Balasubramanian, R., Karve, A., Kandasamy, M., Meagher, R. B. & Moore, B. A role for F-actin in hexokinase-mediated glucose signaling. *Plant Physiol.* **145**, 1423–1434 (2007).
89. Karve, A. *et al.* Expression and evolutionary features of the hexokinase gene family in *Arabidopsis*. *Planta.* **228**, 411–425 (2008).

## Acknowledgements

This work was supported by the National Natural Science Foundation of China (Grant No. 31420103914) and the Overseas Construction Plan for Science and Education Base, China-Africa Center for Research and Education, Chinese Academy of Sciences (Grant No. SAJC201327).

## Author Contributions

Y.H. and W.W. conceived and designed the experiments. W.W., H.Z. and B.M. performed the experiments. Y.H. and W.W. wrote the paper. S.S.K. and A.O. revised the manuscript.

## Additional Information

**Supplementary information** accompanies this paper at <http://www.nature.com/srep>

**Competing financial interests:** The authors declare no competing financial interests.

**How to cite this article:** Wang, W. *et al.* Divergent Evolutionary Pattern of Sugar Transporter Genes is Associated with the Difference in Sugar Accumulation between Grasses and Eudicots. *Sci. Rep.* **6**, 29153; doi: 10.1038/srep29153 (2016).



This work is licensed under a Creative Commons Attribution 4.0 International License. The images or other third party material in this article are included in the article's Creative Commons license, unless indicated otherwise in the credit line; if the material is not included under the Creative Commons license, users will need to obtain permission from the license holder to reproduce the material. To view a copy of this license, visit <http://creativecommons.org/licenses/by/4.0/>