

# SCIENTIFIC REPORTS



OPEN

## Screening of spider mites (Acari: Tetranychidae) for reproductive endosymbionts reveals links between co-infection and evolutionary history

Received: 12 October 2015

Accepted: 27 May 2016

Published: 13 June 2016

Yan-Kai Zhang<sup>1,2</sup>, Ya-Ting Chen<sup>2</sup>, Kun Yang<sup>2</sup>, Ge-Xia Qiao<sup>1</sup> & Xiao-Yue Hong<sup>2</sup>

Reproductive endosymbionts have been shown to have wide-ranging effects on many aspects of their hosts' biology. A first step to understanding how these endosymbionts interact with their hosts is to determine their incidences. Here, we screened for four reproductive endosymbionts (*Wolbachia*, *Cardinium*, *Spiroplasma* and *Rickettsia*) in 28 populations of spider mites (Acari: Tetranychidae) representing 12 species. Each of the four endosymbionts were identified in at least some of the tested specimens, and their infection patterns showed variations at the species-level and population-level, suggesting their distributions can be correlated with both the phylogeny and ecology of the hosts. Co-infections of unrelated bacteria, especially double infections of *Wolbachia* and *Cardinium* within the same individuals were common. *Spiroplasma* and *Rickettsia* infections were specific to particular host species, respectively. Further, the evolutionary histories of these endosymbionts were inferred by comparing the phylogenies of them and their hosts. These findings can help to clarify the interactions between endosymbionts and arthropods.

Symbiotic bacteria are ubiquitous and have profound impacts on their host's biology<sup>1–4</sup>. The interest in the field has come largely from the discovery of *Wolbachia*, a bacterium that manipulates hosts' reproduction through cytoplasmic incompatibility (CI), parthenogenesis, male-killing, feminization<sup>5</sup> and oogenesis<sup>6</sup>. Within the last decade, a second symbiotic bacterium, *Cardinium*, has been found to have reproductive effects, including cytoplasmic incompatibility<sup>7,8</sup>, parthenogenesis<sup>9</sup> and feminization<sup>10</sup>. Other reproductive endosymbionts have been recorded in the genera *Spiroplasma* and *Rickettsia*. *Spiroplasma* induces male-killing in *Drosophila*<sup>11</sup>, butterflies<sup>12</sup>, ladybird beetles<sup>13</sup> and planthoppers<sup>14</sup>. *Rickettsia* has been shown to manipulate the reproductive biology of wasps<sup>15</sup> and beetles<sup>16,17</sup>. In addition, many of them also may provide direct fitness benefits to infected individuals, such as protection from pathogens<sup>18</sup> or increasing fecundity<sup>19</sup> under certain circumstances. These endosymbionts should thus be recognized as important components of arthropod biology.

*Wolbachia* is widespread in arthropods<sup>20</sup> and its distribution is related to host ecology and host biology<sup>21,22</sup>. Some lineages of *Wolbachia* (termed supergroups A and B) have spread ubiquitously, while others (e.g., supergroups C and D) are taxon-specific. *Cardinium* infections are rarer than *Wolbachia*, and are restricted to Hymenoptera, Hemiptera, Diptera and Acari<sup>23–25</sup>. Double infections of *Wolbachia* and *Cardinium* within the same host species have been found<sup>8,26,27</sup>. The distributions of *Spiroplasma* and *Rickettsia* and other reproductive bacteria have been widely investigated in some arthropods<sup>28–30</sup>.

In view of the wide distribution of endosymbionts in arthropods and their potential influences on hosts, much remains to be learned about host-bacteria interactions. Spider mites (Acari: Tetranychidae) represent a distinctive evolutionary group that is comprised of about 1200 species, including many closely related species<sup>31</sup>. They are so named because some species utilize silk in constructing webbing on leaves or pads for oviposition and also for dispersal via ballooning much in the manner of some spiders. Spider mites have two reproductive

<sup>1</sup>Institute of Zoology, Chinese Academy of Sciences, Beijing, 100101, China. <sup>2</sup>Department of Entomology, Nanjing Agricultural University, Nanjing, Jiangsu 210095, China. Correspondence and requests for materials should be addressed to G.-X.Q. (email: qiaogx@ioz.ac.cn) or X.-Y.H. (email: xyhong@njau.edu.cn)

strategies (bisexual and parthenogenetic). Many species of them have a wide host range, whereas others are highly host-specific. For example, *Tetranychus urticae*, *Tetranychus truncatus*, *Tetranychus kanzawai* and *Panonychus citri* are polyphagous and are serious pests of agricultural and horticultural crops. However, these genera also include oligophagous species, such as *Tetranychus bambusae* and *Oligonychus orthius* which inhabit only Poaceae plants. Previous studies have revealed that *Wolbachia* is widespread in spider mites. For example, *Wolbachia* has been detected in the genus *Tetranychus*<sup>32,33</sup>, *Oligonychus*<sup>33</sup>, *Panonychus*<sup>33</sup>, *Schizotetranychus*<sup>33</sup>, *Bryobia*<sup>34</sup> and *Amphitetranychus*<sup>35</sup>. Furthermore, it was found associated with CI phenotypes in several species<sup>8,26,27,32,33,36</sup>. *Cardinium* was present in 15 species of family Tetranychidae, and induced CI in *Tetranychus piercei*<sup>8</sup>, *Tetranychus phaselus*<sup>26</sup>, *T. truncatus*<sup>27</sup> and *Eotetranychus suginamensis*<sup>37</sup>. Unlike the widespread distribution of *Wolbachia* and *Cardinium*, *Rickettsia* and *Spiroplasma* were less common, they were only found in *T. urticae*<sup>38,39</sup>. As yet, comparative studies that focus on these endosymbionts in a group of spider mites species are very limited.

Here, we surveyed for the first time incidences of the four endosymbionts in economically important species of spider mites. Double infections of more than one endosymbiont were frequent within the same species, we then evaluated the levels of co-infection. We further clarified the phylogenetic relationships of these detected endosymbionts to infer their evolutionary histories. Our data provide insights into the evolution and distribution of endosymbionts in spider mites and may thus be regarded as a basis for future studies on spider mites and endosymbionts interactions.

## Results

**Incidences of tested endosymbionts in spider mites.** Of the 12 spider mite species examined, *Wolbachia* was found to infect 8 species with prevalence ranging from 16.7 to 100%. *Cardinium* was found to infect 7 species and their infection frequencies ranging from 4.3 to 100% (Table 1). Among them, *Cardinium* infections in *T. kanzawai* and *Amphitetranychus viennensis* are new reports. *Wolbachia* infections were more frequent in *T. truncatus* than in *A. viennensis* (80.4% vs 36.5%,  $P < 0.05$ ), while *Cardinium* infections showed no difference between them (58.9% vs 53.1%,  $P = 0.18$ ). Other endosymbionts infections showed some host species-specificity, as *Spiroplasma* was found in *T. truncatus* and *Rickettsia* was detected in *T. urticae* G (Table 1, Fig. 1).

**Correlated infections with multiple endosymbionts.** Of note, co-infections of unrelated endosymbionts were observed in several species. For instance, *Wolbachia* and *Cardinium* usually co-infect *T. truncatus*, *T. kanzawai*, *T. phaselus*, *T. piercei*, *A. viennensis* and *Petrobia harti*. Similarly, *T. urticae* G was infected by *Wolbachia* and *Rickettsia*, and *T. truncatus* showed triple infections (Table 1, Fig. 1). Furthermore, Spearman correlation analyses of the presence/absence of each endosymbiont within spider mite individuals against the presence/absence of other endosymbionts revealed that infections with *Wolbachia* and *Cardinium* were significantly correlated to each other ( $r = 0.4344$ ,  $P < 0.01$ ). Similarly, infections with *Wolbachia* and *Spiroplasma* were significantly correlated to each other ( $r = 0.4737$ ,  $P < 0.01$ ) in *T. truncatus*.

**Phylogeny of spider mites hosts and detected endosymbionts.** Bayesian and maximum likelihood phylogenies of spider mites based on *COI*, *18SrRNA* and *28SrRNA* were identical. Species of the genus *Tetranychus* appeared to be monophyletic with strong support of posterior probabilities ( $>0.9$ ) and moderate support of maximum likelihood bootstrap values ( $>50$ ), other branches were not well resolved (Fig. 1).

Analyses of the *wsp* gene sequences in the seven positive species revealed nine *Wolbachia* strains, which were designated as *wPhar*, *wAvie*, *wTpha*, *wTurt*, *wTpue*, *wTkan*, *wTpie*, *wTtru1* and *wTtru5* (Table 1). These strains, except for *wTpie*, were characterized by MLST. *Wolbachia* phylogenies based on MLST genes were largely identical for both Bayesian and maximum likelihood analyses, and most splits were highly supported. All of the *Wolbachia* strains from spider mites were assigned to supergroup B. *Wolbachia* strains from *T. truncatus*, *T. kanzawai*, *T. urticae* and *T. pueraricola* showed little divergence, and formed a monophyletic group (Fig. 2). While the *Wolbachia* strains obtained from *T. phaselus*, *A. viennensis* and *P. harti* respectively exhibited a distinct node in the phylogenies (Fig. 2).

Based on the *16S rRNA* sequences, a total of seven *Cardinium* strains (*cTpie*, *cPhar*, *cAvie*, *cTpha*, *cTurt*, *cTkan* and *cTtru*) were found. Owing to the *16S rRNA*'s low discriminating ability, we performed phylogenetic analyses using the *gyrB* sequences. The *gyrB* gene of *cTpie* was not successfully sequenced, which was therefore not represented in the *Cardinium* phylogeny. The remaining strains all belonged to group A-clade, and strains derived from *A. viennensis*, *T. kanzawai*, *T. phaselus* and *T. truncatus* plus with *Cardinium* from other spider mites species formed a monophyletic group (Fig. 3).

Sequencing of the *Spiroplasma*'s *16S rRNA*, *rpoB* gene and the *Rickettsia*'s *gltA* gene identified one *Spiroplasma* strain from *T. truncatus* and one *Rickettsia* strain from *T. urticae* G, respectively (Table 1, Table S2). Phylogenetic tree based on *rpoB* gene demonstrated that the *Spiroplasma* of *T. truncatus* fell into the *ixodetis* group, which includes *Spiroplasma ixodetis* and *Spiroplasma* infecting tick, planthopper, moth and flies (Fig. 4). The *Rickettsia* detected from *T. urticae* G fell within the *bellii* group (Fig. 5).

**Correlation between *Wolbachia*, *Cardinium* and hosts genetic distances.** The pattern of association and genetic divergence between *Wolbachia*, *Cardinium* and hosts were examined. Pairwise genetic distances of hosts and associated *Wolbachia* were significantly correlated ( $r = 0.4828$ ,  $P = 0.005$ ). While there was no significant correlation between *Cardinium* and hosts genetic distances ( $r = 0.1939$ ,  $P = 0.29$ ).

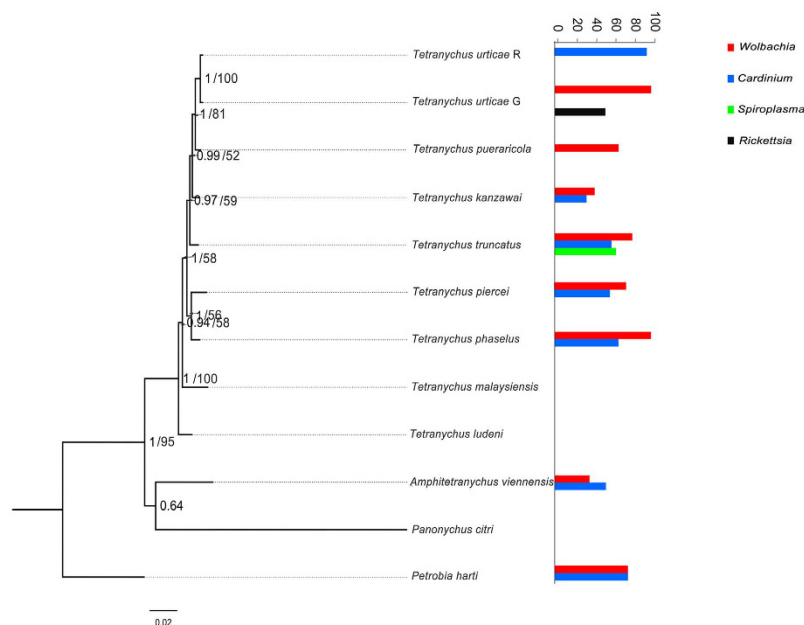
## Discussion

Studies of endosymbiont incidences in a wide variety of arthropods suggest that *Wolbachia* is the most common bacterial symbiont<sup>20</sup>. Acari is assumed to be a hotspot for *Wolbachia* infections<sup>25,29</sup>. The finding of about 67% *Wolbachia*-positive species in our study is in line with estimations of a general *Wolbachia* prevalence among arthropods (40–60%). *Cardinium* infections were identified in 7 out 12 species (58.3%), suggesting that spider

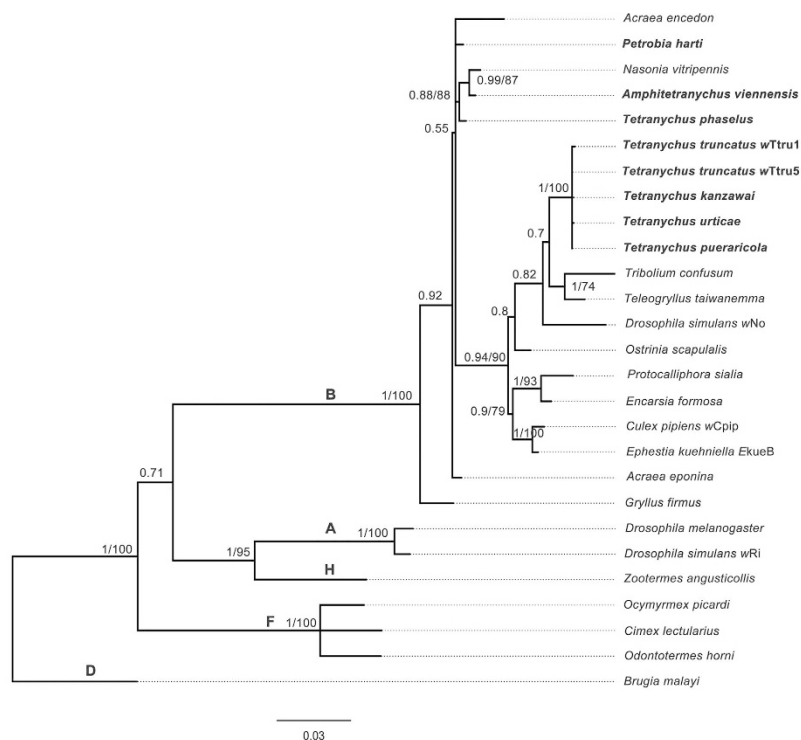
Population code	Species	Host plant	Location	Collection date	Collection source	Endosymbionts infection <sup>a</sup>			
						<i>Wolbachia</i> % infected	<i>Cardinium</i> % infected	<i>Spiroplasma</i> % infected	<i>Rickettsia</i> % infected
1	<i>Tetranychus truncatus</i>	Cotton	Harbin, Heilongjiang	Aug-2011	Field collected	100 (24/24) wTtru5	100 (24/24) cTtru	83.3 (20/24) <i>Spiroplasma</i> sp.	–
2		Eggplant	Changchun, Jilin	Jul-2014	Field collected	–	100 (12/12) cTtru	–	–
3		Japan Caryatia	Yanji, Jilin	Aug-2011	Field collected	100 (24/24) wTtru1	12.5 (3/24) cTtru	37.5 (9/24) <i>Spiroplasma</i> sp	–
4		Mung bean	Shenyang, Liaoning	Aug-2011	Field collected	69.6 (16/23) wTtru5	4.3 (1/23) cTtru	82.6 (19/23) <i>Spiroplasma</i> sp	–
5		Bean	Hohhot, Inner Mongolia	Aug-2014	Field collected	100 (12/12) wTtru1	100 (12/12) cTtru	100 (12/12) <i>Spiroplasma</i> sp	–
6		Eggplant	Jiuquan, Gansu	Sep-2012	Field collected	75 (9/12) wTtru5	–	–	–
7		Snake gourd	Cangzhou, Hebei	Aug-2014	Field collected	100 (24/24) wTtru1	100 (24/24) cTtru	100 (24/24) <i>Spiroplasma</i> sp	–
8		Eggplant	Changzhi, Shanxi	Aug-2014	Field collected	100 (20/20) wTtru1	100 (20/20) cTtru	100 (20/20) <i>Spiroplasma</i> sp	–
9		Corn	Chuzhou, Anhui	Sep-2010	Field collected	16.7 (2/12) wTtru1	–	–	–
10	<i>Tetranychus kanzawai</i>	Chinese rose	Qingdao, Shandong	Jun-2011	Field collected	41.7 (5/12) wTkan	33.3 (4/12) cTkan	–	–
12	<i>Tetranychus urticae</i> (Green form)	Apple	Taian, Shandong	Aug-2014	Lab reared	100 (12/12) wTurt	–	–	75 (9/12) <i>Rickettsia</i> sp
13		Bean	Hohhot, Inner Mongolia	Aug-2014	Lab reared	100 (12/12) wTurt	–	–	100 (10/12) <i>Rickettsia</i> sp
14		Apple	Missouri, USA	Jul-2012	Lab reared	100 (12/12) wTurt	–	–	–
15	<i>Tetranychus urticae</i> (Red form)	Willow	Kunming, Yunnan	Jul-2012	Lab reared	–	95.8 (23/24) cTurt	–	–
16		Bean	Ibaraki, Japan		Lab reared	–	–	–	–
17	<i>Tetranychus pueraricola</i>	Purple yam	Yongfu, Guangxi	Aug-2014	Field collected	66.7 (8/12) wTpue	–	–	–
18	<i>Tetranychus phaselus</i>	Bean	Quanzhou, Fujian	Jun-2014	Field collected	100 (12/12) wTpha	66.7 (8/12) cTpha	–	–
19	<i>Tetranychus malaysiensis</i>		Lingshui, Hainan	Jun-2014	Field collected	–	–	–	–
20	<i>Tetranychus piercei</i>	Kidney bean	Mayang, Hunan	Jul-2014	Field collected	75 (9/12) wTpie	58.3 (7/12) cTpie	–	–
21	<i>Tetranychus ludeni</i>	Melon	Shantou, Guangdong	Jul-2014	Field collected	–	–	–	–
22	<i>Amphetetranychus viennensis</i>	Plum	Daqing, Heilongjiang	Aug-2012	Field collected	–	–	–	–
23		Cherry	Yanji, Jilin	Aug-2012	Field collected	58.3 (14/24) wAvie	66.7 (16/24) cAvie	–	–
24		Purple-leaf plum	Zhengzhou, Henan	Jul-2012	Field collected	16.7 (4/24) wAvie	–	–	–
25		Purple-leaf plum	Sanmenxia, Henan	Jun-2012	Field collected	–	83.3 (20/24) cAvie	–	–
26		Peach	Nanjing, Jiangsu	Aug-2014	Field collected	70.8 (17/24) wAvie	62.5 (15/24) cAvie	–	–
27	<i>Petrobia harti</i>	Clover	Nanjing, Jiangsu	Oct-2010	Field collected	75 (9/12) wPhar	75 (9/12) cPhar	–	–
28	<i>Panonychus citri</i>	Citrus	Suzhou, Jiangsu	Sep-2010	Field collected	–	–	–	–

**Table 1. Prevalence of investigated endosymbionts in different lines of spider mites.** <sup>a</sup>The infection rate of each endosymbiont was presented. Data in the bracket indicates the number of infected individuals and the number of test individuals, respectively. – indicates endosymbionts were not detected.

mites are prone to be infected with *Cardinium*, which is consistent with previous estimates<sup>23,24,40</sup>. Whereas *Spiroplasma* and *Rickettsia* showed host species-specificity, they were only detected in *T. truncatus* and *T. urticae*, respectively. Ecological traits of host can affect the infection dynamics of endosymbionts in them<sup>41,42</sup>. Although the infection frequencies of these endosymbionts varied among geographical populations, our survey data did not detect a clear correlation between their distribution and host ecological traits (Table 1). It is worth noting that three lab reared lines of *T. urticae* G were completely infected with *Wolbachia*, indicating fixation of infection has been reached in rearing. In addition, three species *T. malaysiensis*, *T. ludeni*, *P. citri* did not carry any of the tested endosymbionts, raising the possibility that there have been repeated losses of infection during post-speciation from an infected ancestor or due to limited samples. *Wolbachia* infections were more frequent in *T. truncatus* than

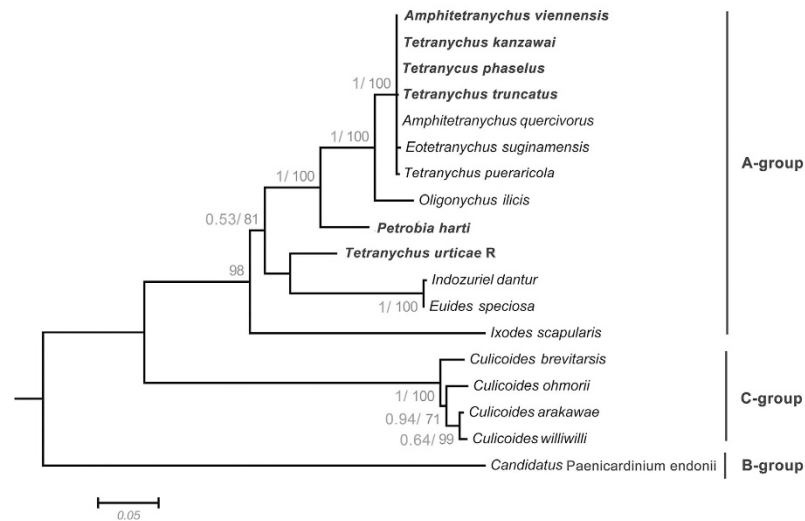


**Figure 1. Phylogeny of spider mites based on *COI*, *18S rRNA*, *28S rRNA* gene sequences (left) and endosymbiont infection (right).** Bayesian posterior (left numbers) and ML bootstrap values (right numbers, values >50% are indicated) are given in the tree. Prevalence of each endosymbiont is given.

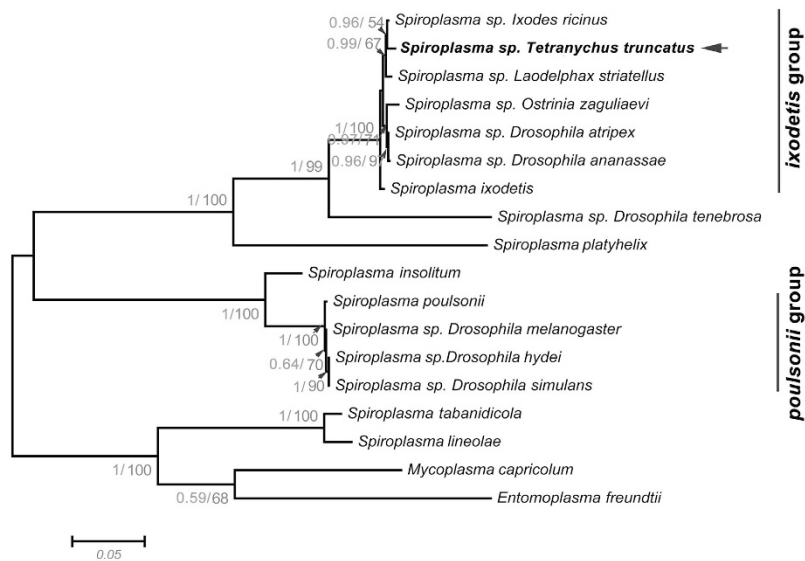


**Figure 2. Bayesian inference phylogeny of *Wolbachia* based on the concatenated MLST data.** The topology resulting from the Maximum Likelihood method was similar. The *Wolbachia* strains obtained from in this study are indicated in bold letters. Strains are characterized by the names of their host species. Bayesian posterior (left numbers) and ML bootstrap values (right numbers) are given (only values >50% are indicated).

in *A. viennensis*. The two species are phylogenetically divergent and have different habitats, thus it remains possible that host phylogeny combined with host ecology shapes the distribution of endosymbionts in spider mites.



**Figure 3. Phylogenetic analyses of *Cardinium* based on the *gyrB* gene sequences from this study (highlighted) and others downloaded from GenBank. *Cardinium* group names are used in accordance to the reference<sup>25</sup>. Bayesian posterior (left numbers) and ML bootstrap values (right numbers, values >50% are indicated) are given in the trees.**



**Figure 4. Phylogenetic analyses of *Spiroplasma* based on the *rpoB* gene sequences. *Spiroplasma* infecting *T. truncatus* is indicated in bold letters. Bayesian posterior (left numbers) and ML bootstrap values (right numbers, values >50% are indicated) are given in the trees.**

Manipulating reproduction and providing fitness advantages in their hosts are thought to be two important determinants of endosymbionts infection frequencies<sup>43</sup>. The high infection frequencies of *Wolbachia* and *Cardinium* in spider mites may be due to their reproductive manipulations or fitness advantages. Nine *Wolbachia* strains were detected from the positive specimens, and several of these strains have previously been studied in detail. For example, there is evidence that *Wolbachia* induces CI in several spider mites, including *T. urticae*<sup>32,33,43</sup>, *T. phaselus*<sup>26</sup>, *T. truncatus*<sup>27</sup>, *T. piercei*<sup>8</sup> and *A. viennensis*<sup>35</sup>. Regarding *Cardinium*, it was found to induce CI in *T. piercei*<sup>8</sup>, *T. phaselus*<sup>26</sup> and *T. truncatus*<sup>27</sup>. Furthermore, Weinert *et al.*<sup>40</sup> have speculated that high *Cardinium* incidences in spider mites might reflect evolutionary changes in arthropod immunity, as spider mites lack components of the immune deficiency (IMD) pathway, and IMD is activated by diaminopimelic acid-type (DAP-type) peptidoglycan, which is produced by *Cardinium*<sup>44</sup>.

Spider mites showed co-infections with more than one endosymbiont. Statistical analyses revealed that infections with *Wolbachia* and *Cardinium*, *Wolbachia* and *Spiroplasma* were significantly correlated to each other within the same individuals. There are a number of possible mechanisms that can facilitate such endosymbiont co-infections<sup>45</sup>. For example, the co-infecting endosymbionts may additively or synergistically confer fitness





In summary, four endosymbionts were identified in the tested specimens, and their distributions were found to be shaped by both host phylogeny and host ecology. The levels of co-infections within the same individuals were significantly higher than would be expected by chance. Comparison between the phylogenies of hosts and associated endosymbionts allowed us to explore the evolutionary histories of these endosymbionts' infections. Together with these endosymbionts' reproductive effects on spider mites, these findings are helpful for understanding the interaction between endosymbionts and spider mites.

## Methods

All experimental protocols were approved by Chinese Academy of Sciences and Nanjing Agricultural University. Methods were carried out in accordance with relevant guidelines and regulations.

**Spider mites samples.** This study was based on specimens from 28 populations of spider mites representing 12 species that were collected from field or lab reared lines (Table 1). All samples were stored in 100% ethanol and frozen at  $-20\text{ }^{\circ}\text{C}$  until DNA extraction.

**PCR screening and sequencing.** Spider mite DNA was extracted as previously described<sup>52</sup>. The DNA quality was tested by amplifying a fragment of the cytochrome oxidase, subunit I (*COI*) gene of spider mites<sup>53</sup>. Then, the presence of *Wolbachia*, *Cardinium*, *Spiroplasma* and *Rickettsia* was assessed by PCR amplification using specific primers and annealing temperatures listed in Table S1. PCRs were carried out on a Veriti machine (ABI Biosystems, USA) in 25  $\mu\text{l}$  volume containing 12.5  $\mu\text{l}$  2  $\times$  Taq Master Mix (Vazyme Biotech, China), 0.5  $\mu\text{l}$  primer (20  $\mu\text{M}$  each), 1  $\mu\text{l}$  of DNA extract. Positive and negative controls were included in PCR reactions. PCR products (5  $\mu\text{l}$ ) were visualized on a 1.5% agarose gel stained with ethidium bromide<sup>54</sup>. The positive products were purified using AxyPrep DNA Gel Extraction kit (AxyGEN, USA) and then directly sequenced (Majorbio Company, Shanghai, China). For *Wolbachia*, single-infection status was confirmed during *wsp* sequencing. Then, the MLST gene sequences of single infected *Wolbachia* from different individuals were amplified using standard primers and PCR protocols (<http://www.pubmlst.org/wolbachia/>). The *COI*, *18SrRNA* and *28SrRNA* sequences of spider mites were amplified and sequenced to construct host phylogeny. The obtained sequences have been deposited in GenBank (Table S2).

**Phylogenetic analysis.** All sequences were aligned and manually corrected using BioEdit<sup>55</sup>. Prior to phylogenetic analysis, the best-fitting nucleotide models were determined by jModeltest version 2<sup>56</sup>. *Wolbachia* phylogeny was determined by reconstructing Bayesian Inference (BI) and Maximum-Likelihood (ML) trees of the concatenated data set of MLST genes from this study and PubMLST database (<http://www.pubmlst.org/wolbachia/>). Bayesian analyses were performed in MrBayes 3.1<sup>57</sup> under the GTR + I + G model. Four Markov chains were run for 15,000,000 generations with sampling every 100 generations, and the first 37,500 generations were discarded. Convergence of runs was assumed when split frequencies reached  $<0.01$ . ML analysis was also conducted for the concatenated data set of MLST genes in MEGA 5.0<sup>58</sup> under the GTR + I + G model, bootstrap pseudoreplicates were calculated 1,000 times.

The phylogenetic analyses of *Cardinium*, *Spiroplasma* and *Rickettsia* were performed using Bayesian Inference (BI) and Maximum-Likelihood (ML) estimation for the sequences of *gyrB* gene, *rpoB* gene and *gltA* gene, respectively. The evolutionary models used were as follows: *gyrB*- GTR + I + G, *rpoB*-GTR + I + G, and *gltA*-HKY+G. For each Bayesian analysis, four Markov chains were run 1,000,000 generations with sampling every 100 generations, and the first 25% of samples were discarded as burn-in. Convergence of runs was assumed when split frequencies reached  $<0.01$ . ML analyses were conducted in MEGA 5.0<sup>58</sup>, bootstrap pseudoreplicates were calculated 1,000 times.

In addition, Bayesian and ML phylogenetic trees of spider mite were constructed using a supermatrix that consisting of the *COI*, *18SrRNA* and *28SrRNA* sequences. Analyses were performed in MrBayes 3.1 and MEGA 5.0 under the GTR+G+I model, respectively.

**Statistical analysis.** Endosymbiont infection patterns were first compared on the level of genera and species of spider mites. Two extensively sampled species, *T. truncatus* and *A. viennensis* were selected to test the differences of *Wolbachia* and *Cardinium* infections. Because co-infection was common in spider mites, co-infection levels were evaluated with a Spearman correlation analysis of the presence/absence of each endosymbiont within spider mite individuals against the presence/absence of other endosymbionts. The analysis was performed with Stata 11.0<sup>59</sup>. In addition, we tested for correlation between host genetic distance and the corresponding *Wolbachia*, *Cardinium* strains genetic divergence to infer their infection patterns. Correlation analyses were performed using a Mantel test in Arlequin 3.1<sup>60</sup> with 1000 permutations. Genetic distance matrices of the concatenated MLST dataset for *Wolbachia*, *gyrB* genes for *Cardinium* and the concatenated nuclear and mitochondrial loci for spider mites were calculated with the Kimura 2-parameter model in MEGA 5.0.

## References

1. Tsuchida, T. *et al.* Symbiotic bacterium modifies aphid body color. *Science* **330**, 1102–1104 (2010).
2. Douglas, A. E. The microbial dimension in insect nutritional ecology. *Funct. Ecol.* **23**, 38–47 (2009).
3. Sharon, G. *et al.* Commensal bacteria play a role in mating preference of *Drosophila melanogaster*. *Proc. Natl. Acad. Sci. USA* **107**, 20051–20056 (2010).
4. Ivanov, I. I. & Littman, D. R. Modulation of immune homeostasis by commensal bacteria. *Curr. Opin. Microbiol.* **14**, 106–114 (2011).
5. Werren, J. H., Baldo, L. & Clark, M. E. *Wolbachia*: master manipulators of invertebrate biology. *Nat. Rev. Microbiol.* **6**, 741–751 (2008).
6. Dedeine, F., Bouletreau, M. & Vavre, F. *Wolbachia* requirement for oogenesis: occurrence within the genus *Asobara* (Hymenoptera, Braconidae) and evidence for intraspecific variation in *A. tabida*. *Heredity* **95**, 394–400 (2005).

7. Hunter, M. S., Perlman, S. J. & Kelly, S. E. A bacterial symbiont in the bacteroidetes induces cytoplasmic incompatibility in the parasitoid wasp *Encarsia pergandiella*. *Proc. R. Soc. B Biol. Sci.* **270**, 2185–2190 (2003).
8. Zhu, L. Y. *et al.* *Wolbachia* strengthens *Cardinium*-induced cytoplasmic incompatibility in the spider mite *Tetranychus piercei* McGregor. *Curr. Microbiol.* **65**, 516–523 (2012).
9. Zchori-Fein, E. *et al.* A newly discovered bacterium associated with parthenogenesis and a change in host selection behavior in parasitoid wasps. *Proc. Natl. Acad. Sci. USA* **98**, 12555–12560 (2001).
10. Weeks, A., Marec, F. & Breeuwer, J. A. J. A mite species that consists entirely of haploid females. *Science* **29**, 2479–2482 (2001).
11. Pool, J. E., Wong, A. & Aquadro, C. F. Finding of male-killing *Spiroplasma* infecting *Drosophila melanogaster* in Africa implies transatlantic migration of this endosymbiont. *Heredity* **97**, 27–32 (2006).
12. Jiggins, F. M., Hurst, G. D. D., Jiggins, C. D. & Majerus, M. The butterfly *Danaus chrysippus* is infected by a male-killing *Spiroplasma* bacterium. *Parasitol.* **120**, 439–446 (2000).
13. Tinsley, M. C. & Majerus, M. E. N. A new male-killing parasitism: *Spiroplasma* bacteria infect the ladybird beetle *Anisosticta novemdecimpunctata* (Coleoptera: Coccinellidae). *Parasitol.* **132**, 757–765 (2006).
14. Sanada-Morimura, S., Matsumura, M. & Noda, H. Male killing caused by a *Spiroplasma* symbiont in the small brown planthopper, *Laodelphax striatellus*. *J. Hered.* **104**, 821–829 (2013).
15. Giorgini, M., Bernardo, U., Monti, M. M., Nappo, A. G. & Gebiola, M. *Rickettsia* symbionts cause parthenogenetic reproduction in the parasitoid wasp *Pnigalio soemius* (Hymenoptera: Eulophidae). *Appl. Environ. Microbiol.* **76**, 2589–2599 (2010).
16. Lawson, E. T., Mousseau, T. A., Klaper, R., Hunter, M. D. & Werren, J. H. *Rickettsia* associated with male-killing in a buprestid beetle. *Heredity* **86**, 497–505 (2001).
17. von der Schulenburg, J. H. G. *et al.* Incidence of male-killing *Rickettsiaspp* ( $\alpha$ -Proteobacteria) in the ten-spot ladybird beetle *Adalia decempunctata* L. (Coleoptera: Coccinellidae). *Appl. Environ. Microbiol.* **67**, 270–277 (2001).
18. Teixeira, L., Ferreira, Á. & Ashburner, M. The bacterial symbiont *Wolbachia* induces resistance to RNA viral infections in *Drosophila melanogaster*. *PLoS Biol.* **6**, e1000002 (2008).
19. Himler, A. G. *et al.* Rapid spread of a bacterial symbiont in an invasive whitefly is driven by fitness benefits and female bias. *Science* **332**, 254–256 (2011).
20. Zug, R. & Hammerstein, P. Still a host of hosts for *Wolbachia*: analysis of recent data suggests that 40% of terrestrial arthropod species are infected. *PLoS ONE* **7**, e38544 (2012).
21. Shoemaker, D. D. *et al.* The distribution of *Wolbachia* in fig wasps: correlation with host phylogeny, ecology and population structure. *Proc. R. Soc. B Biol. Sci.* **269**, 2257–2267 (2002).
22. Lachowska, D., Kajtoch, Ł. & Knutelski, S. Occurrence of *Wolbachia* in central European weevils: correlations with host systematics, ecology, and biology. *Entomol. Exp. Appl.* **135**, 105–118 (2010).
23. Weeks, A. R., Velten, R. & Stouthamer, R. Incidence of a new sex-ratio-distorting endosymbiotic bacterium among arthropods. *Proc. R. Soc. B Biol. Sci.* **270**, 1857–1865 (2003).
24. Zchori-Fein, E. & Perlman, S. J. Distribution of the bacterial symbiont *Cardinium* in arthropods. *Mol. Ecol.* **13**, 2009–2016 (2004).
25. Nakamura, Y. *et al.* Prevalence of *Cardinium* bacteria in planthoppers and spider mites and taxonomic revision of “*Candidatus Cardinium hertigii*” based on detection of a new *Cardinium* group from biting midges. *Appl. Environ. Microbiol.* **75**, 6757–6763 (2009).
26. Zhao, D. X., Chen, D. S., Ge, C., Gotoh, T. & Hong, X. Y. Multiple infections with *Cardinium* and two strains of *Wolbachia* in the spider mite *Tetranychus phaselus* Ehara: revealing new forces driving the spread of *Wolbachia*. *PLoS ONE* **8**, e54964 (2013).
27. Zhao, D. X., Zhang, X. F. & Hong, X. Y. Host-symbionts interactions in spider mite *Tetranychus truncatus* doubly infected with *Wolbachia* and *Cardinium*. *Environ. Entomol.* **42**, 445–452 (2013).
28. Goodacser, S. L., Martin, O. Y., Thomas, F. G. & Hewitt, G. M. *Wolbachia* and other endosymbiont infections in spiders. *Mol. Ecol.* **15**, 517–527 (2006).
29. Duron, O. *et al.* The diversity of reproductive parasites among arthropods: *Wolbachia* do not walk alone. *BMC Biol.* **6**, 27 (2008).
30. Toju, H. & Fukatsu, T. Diversity and infection prevalence of endosymbionts in natural populations of the chestnut weevil: relevance of local climate and host plants. *Mol. Ecol.* **20**, 853–868 (2011).
31. Migeon, A., Nougouier, E. & Dorkeld, F. Spider Mites Web: a comprehensive database for the Tetranychidae. In *Trends in Acarology* (pp. 557–560). Springer Netherlands 2011.
32. Breeuwer, J. A. J. *Wolbachia* and cytoplasmic incompatibility in the spider mites *Tetranychus urticae* and *T. turkestani*. *Heredity* **79**, 41–47 (1997).
33. Gotoh, T., Noda, H. & Hong, X. Y. *Wolbachia* distribution and cytoplasmic incompatibility based on a survey of 42 spider mite species (Acari: Tetranychidae) in Japan. *Heredity* **91**, 208–216 (2003).
34. Ros, V. I., Fleming, V. M., Feil, E. J. & Breeuwer, J. A. How diverse is the genus *Wolbachia*? Multiple-gene sequencing reveals a putatively new *Wolbachia* supergroup recovered from spider mites (Acari: Tetranychidae). *Appl. Environ. Microbiol.* **75**, 1036–1043 (2009).
35. Zhang, Y. K., Sun, B. & Hong, X. Y. Infection and reproductive effects of *Wolbachia* in the hawthorn spider mite, *Amphitetranychus viennensis* (Acarina: Tetranychidae). *Acta Entomol. Sinica* **57**, 914–920 (2014).
36. Gotoh, T. *et al.* *Wolbachia* and nuclear-nuclear interactions contribute to reproductive incompatibility in the spider mite *Panonychus mori* (Acari: Tetranychidae). *Heredity* **94**, 237–246 (2005).
37. Gotoh, T., Noda, H. & Ito, S. *Cardinium* symbionts cause cytoplasmic incompatibility in spider mites. *Heredity* **98**, 13–20 (2007).
38. Enigl, M. & Schausberger, P. Incidence of the endosymbionts *Wolbachia*, *Cardinium* and *Spiroplasma* in phytoseiid mites and associated prey. *Exp. Appl. Acarol.* **42**, 75–85 (2007).
39. Weinert, L. A., Werren, J. H., Aebi, A., Stone, G. N. & Jiggins, F. M. Evolution and diversity of *Rickettsia* bacteria. *BMC Biol.* **7**, 6 (2009).
40. Weinert, L. A., Araujo-Jnr, E. V., Ahmed, M. Z. & Welch, J. J. The incidence of bacterial endosymbionts in terrestrial arthropods. *Proc. R. Soc. B Biol. Sci.* **282**, 20150249 (2015).
41. Sontowski, R., Bernhard, D., Bleidorn, C., Schlegel, M. & Gerth, M. *Wolbachia* distribution in selected beetle taxa characterized by PCR screens and MLST data. *Ecol. Evol.* **5**, 4345–4353 (2015).
42. Gerth, M., Saeed, A., White, J. A. & Bleidorn, C. Extensive screen for bacterial endosymbionts reveals taxon-specific distribution patterns among bees (Hymenoptera, Anthophila). *FEMS Microbiol. Ecol.* **91**, fiv047 (2015).
43. Zhao, D. X., Zhang, X. F., Chen, D. S., Zhang, Y. K. & Hong, X. Y. *Wolbachia*-host interactions: host mating patterns affect *Wolbachia* density dynamics. *PLoS ONE* **8**, e66373 (2013).
44. Penz, T. *et al.* Comparative genomics suggests an independent origin of cytoplasmic incompatibility in *Cardinium hertigii*. *PLoS Genet.* **8**, e1003012 (2012).
45. Vautrin, E. & Vavre, F. Interactions between vertically transmitted symbionts: cooperation or conflict? *Trends Microbiol.* **17**, 95–99 (2009).
46. Engelstädter, J., Telschow, A. & Hammerstein, P. Infection dynamics of different *Wolbachia*-types within one host population. *J. Theor. Biol.* **231**, 345–355 (2004).
47. Jaenike, J., Polak, M., Fiskin, A., Helou, M. & Minhas, M. Interspecific transmission of endosymbiotic *Spiroplasma* by mites. *Biol. Lett.* **3**, 23–25 (2007).



48. Caspi-Fluger, A. *et al.* Horizontal transmission of the insect symbiont *Rickettsia* is plant-mediated. *Proc. R. Soc. B. Biol. Sci.* **279**, 1791–1796 (2012).
49. Hoy, M. A. & Jeyaprakash, A. Microbial diversity in the predatory mite *Metaseiulus occidentalis* (Acari: Phytoseiidae) and its prey, *Tetranychus urticae* (Acari: Tetranychidae). *Biol. Control* **32**, 427–441 (2005).
50. Moran, N. & Baumann, P. Phylogenetics of cytoplasmically inherited microorganisms of arthropods. *Trends Ecol. Evol.* **9**, 15–20 (1994).
51. Lo, N., Bandi, C., Watanabe, H., Nalepa, C. & Beninati, T. Evidence for cocolodogenesis between diverse dictyopteran lineages and their intracellular endosymbionts. *Mol. Biol. Evol.* **20**, 907–913 (2003).
52. Zhang, Y. K. *et al.* Diversity of *Wolbachia* in natural populations of spider mites (genus *Tetranychus*): evidence for complex infection history and disequilibrium distribution. *Microb. Ecol.* **65**, 731–739 (2013).
53. Navajas, M., Gutierrez, J., Lagnel, J. & Boursot, J. Mitochondrial cytochrome oxidase I in tetranychid mites: a comparison between molecular phylogeny and changes of morphological and life history traits. *Bull. Entomol. Res.* **86**, 407–417 (1996).
54. LePecq, J. B. & Paoletti, C. A fluorescent complex between ethidium bromide and nucleic acids: physical-chemical characterization. *J. Mol. Biol.* **27**, 87–106 (1967).
55. Hall, T. A. BioEdit: a user-friendly biological sequence alignment editor and analysis program for Windows 95/98/NT. *Nucl. Acids. Symp. Ser.* **41**, 95–98 (1999).
56. Darriba, D., Taboada, G. L., Doallo, R. & Posada, D. jModelTest 2: more models, new heuristics and parallel computing. *Nat. Methods* **9**, 772 (2012).
57. Ronquist, F. & Huelsenbeck, J. P. MrBayes3: Bayesian phylogenetic inference under mixed models. *Bioinform.* **19**, 1572–1574 (2003).
58. Tamura, K. *et al.* MEGA5: molecular evolutionary genetics analysis using maximum likelihood, evolutionary distance, and maximum parsimony methods. *Mol. Biol. Evol.* **28**, 2731–2739 (2011).
59. Stata Corporation STATA statistical software: Version 11. College Station, Texas, USA URL <http://www.stata.com/> (2009).
60. Excoffier, L., Laval, G. & Schneider, S. Arlequin ver. 3.0: an integrated software package for population genetics data analysis. *Evol. Bioinform. Online* **1**, 47–50 (2005).
61. Baldo, L. *et al.* Multilocus sequence typing system for the endosymbiont *Wolbachia pipientis*. *Appl. Environ. Microbiol.* **72**, 7098–7110 (2006).
62. Haselkorn, T. S., Markow, T. A. & Moran, N. A. Multiple introductions of the *Spiroplasma* bacterial endosymbiont into *Drosophila*. *Mol. Ecol.* **18**, 1294–1305 (2009).
63. Davis, M. J., Ying, Z., Brunner, B. R., Pantoja, A. & Ferwerda, F. H. *Rickettsial* relative associated with papaya bunchy top disease. *Curr. Microbiol.* **26**, 80–84 (1998).
64. Matsuda, T., Morishita, M., Hinomoto, N. & Gotoh, T. Phylogenetic analysis of the spider mite sub-family Tetranychinae (Acari: Tetranychidae) based on the mitochondrial *COI* gene and the *18S* and the 5' end of the *28S rRNA* genes indicates that several genera are polyphyletic. *PLoS ONE*. **9**, e108672 (2014).

## Acknowledgements

We thank Xiao-Lin Li, Peng-Yu Jin and Jia Zhang of the Department of Entomology, Nanjing Agricultural University, for their help with the experiments. This study was supported in part by a grant-in-aid from the Science and Technology Program of the National Public Welfare Professional Fund (201103020) from the Ministry of Agriculture of China.

## Author Contributions

Conceived and designed the experiments: Y.-K.Z., G.-X.Q. and X.-Y.H. Performed the experiments: Y.-K.Z., K.Y. and Y.-T.C. Wrote the paper: Y.-K.Z., G.-X.Q. and X.-Y.H.

## Additional Information

**Supplementary information** accompanies this paper at <http://www.nature.com/srep>

**Competing financial interests:** The authors declare no competing financial interests.

**How to cite this article:** Zhang, Y.-K. *et al.* Screening of spider mites (Acari: Tetranychidae) for reproductive endosymbionts reveals links between co-infection and evolutionary history. *Sci. Rep.* **6**, 27900; doi: 10.1038/srep27900 (2016).



This work is licensed under a Creative Commons Attribution 4.0 International License. The images or other third party material in this article are included in the article's Creative Commons license, unless indicated otherwise in the credit line; if the material is not included under the Creative Commons license, users will need to obtain permission from the license holder to reproduce the material. To view a copy of this license, visit <http://creativecommons.org/licenses/by/4.0/>