

SCIENTIFIC REPORTS



OPEN

SpyRing interrogation: analyzing how enzyme resilience can be achieved with phytase and distinct cyclization chemistries

Christopher Schoene¹, S. Paul Bennett² & Mark Howarth¹

Received: 12 October 2015

Accepted: 18 January 2016

Published: 10 February 2016

Enzymes catalyze reactions with exceptional selectivity and rate acceleration but are often limited by instability. Towards a generic route to thermo-resilience, we established the SpyRing approach, cyclizing enzymes by sandwiching between SpyTag and SpyCatcher (peptide and protein partners which lock together via a spontaneous isopeptide bond). Here we first investigated the basis for this resilience, comparing alternative reactive peptide/protein pairs we engineered from Gram-positive bacteria. Both SnoopRing and PiliRing cyclization gave dramatic enzyme resilience, but SpyRing cyclization was the best. Differential scanning calorimetry for each ring showed that cyclization did not inhibit unfolding of the inserted β -lactamase. Cyclization conferred resilience even at 100 °C, where the cyclizing domains themselves were unfolded. Phytases hydrolyze phytic acid and improve dietary absorption of phosphate and essential metal ions, important for agriculture and with potential against human malnutrition. SpyRing phytase (PhyC) resisted aggregation and retained catalytic activity even following heating at 100 °C. In addition, SpyRing cyclization made it possible to purify phytase simply by heating the cell lysate, to drive aggregation of non-cyclized proteins. Cyclization via domains forming spontaneous isopeptide bonds is a general strategy to generate resilient enzymes and may extend the range of conditions for isolation and application of enzymes.

Purified enzymes are finding a range of important uses, from high-cost low-scale applications such as GMP-grade asparaginase in treatment of leukemia¹, to low-cost high-scale applications such as the millions of tons per year of high fructose corn syrup biotransformed by glucose isomerase². When enzymes are being developed for application in new areas, a major challenge is the stability of the enzyme to inactivation during isolation or use in its new environment. Stability can come from sourcing enzymes from harsh environments or from enzyme-specific optimization campaigns using iterative mutation³. However, it is also important to seek generic approaches capable of stabilizing a wide range of enzymes. One such approach is cyclization, connecting the enzyme's N-terminus to the C-terminus. Cyclization can be accomplished via split inteins^{4–7}, sortases⁸, carbodiimide cross-linking⁹ and, most recently, via the design of SpyRings¹⁰. SpyTag is a peptide tag that we engineered from *Streptococcus pyogenes* FbaB adhesion protein to form a spontaneous isopeptide bond upon binding to its protein partner SpyCatcher^{11,12}. SpyRing cyclization utilizes SpyTag on the N-terminus and SpyCatcher on the C-terminus to cyclize an enzyme of interest. We showed this cyclization increased the thermal tolerance of TEM-1 β -lactamase (BLA) by >60 °C, both in terms of aggregation resistance and retaining activity after heating¹⁰. This approach to enzyme resilience is not known in nature and so it is important to further explore this phenomenon, as well as to test whether SpyRing cyclization could be extended to an industrially important class of enzymes.

At least 2 billion people are thought to suffer from deficiency of micronutrients, including vitamin A, iodine, iron, niacin, zinc and calcium¹³. Such deficiency, termed the “silent hunger”, has global consequences, including decreased bone mineralization, anemia, impaired learning, and decreased resistance to infectious diseases such as AIDS and tuberculosis^{13,14}. Major effort has gone into increasing the nutritional value of major food crops around the world, notably introducing the β -carotene pathway into rice¹⁵. Most crops store phosphate as phytic acid (inositol hexakisphosphate), making the phosphate unavailable for humans as well as other agriculturally-important

¹Department of Biochemistry, University of Oxford, South Parks Road, Oxford, OX1 3QU, UK. ²Sekisui Diagnostics UK Ltd., Operations Building, Liphook Way, Allington, Maidstone, Kent, ME16 0LQ, UK. Correspondence and requests for materials should be addressed to M.H. (email: mark.howarth@bioch.ox.ac.uk)

non-ruminants (e.g. poultry, fish, and pigs). Moreover, phytic acid is an anti-nutrient which chelates essential mineral cations (iron, zinc, calcium)^{16,17}. Adding phytase to the diet breaks down phytic acid and has been widely used in agriculture to improve animal health¹⁸. The use of phytase also reduces the danger, if phosphate is directly added to feedstock, of excess phosphate polluting waterways and leading to eutrophication¹⁸. The thermal tolerance of phytase has great significance because feed-stock must be subjected to temperatures of 75–90 °C to kill *Salmonella* and other dietary pathogens¹⁸.

Here we have explored the principle of SpyRing resilience by evaluating enzyme cyclization with alternative recently-established isopeptide-forming protein chemistries. We then extended the scope of SpyRing cyclization by enhancing the thermo-resilience of a phytase. We studied the stability effects of cyclization by differential scanning calorimetry (DSC) and circular dichroism (CD). In addition we opened up a new approach for purification of SpyRing-cyclized enzymes based simply upon heating.

Results

Enzyme cyclization using Isopeptag/Pilin-C or SnoopTag/SnoopCatcher spontaneous isopeptide bond formation. To understand the dramatic increase in thermal resilience caused by SpyRing-mediated cyclization, we compared the effects of cyclizing with two different Tag/Catcher pairs, each able to form a spontaneous isopeptide bond (Fig. 1A). First we sandwiched BLA between Isopeptag and Pilin-C, a Tag/Catcher pair we had previously engineered by splitting the *Streptococcus pyogenes* major pilin Spy0128^{19,20}. We termed this approach PilinRing cyclization. We also tested sandwiching BLA between SnoopTag and SnoopCatcher, a peptide/protein pair we recently engineered from the RrgA adhesin of *Streptococcus pneumoniae*^{21,22} (SnoopRing cyclization, Fig. 1A). SpyRing cyclization occurs through reaction of an amine with a carboxylic acid with release of water, but both SnoopRing and PilinRing cyclization occur through reaction of an amine with a carboxamide with release of ammonia (Fig. 1A)^{20,22}. Cyclization was evaluated by the change in SDS-PAGE mobility upon cyclization, compared to negative controls having the key reactive lysine mutated to alanine (SnoopTag KA-BLA-SnoopCatcher and Pilin-C KA-BLA-Isopeptag) (Fig. 1B). We found that the PilinRing system was efficient at cyclizing BLA when Pilin-C was fused to the N-terminus and Isopeptag was fused to the C-terminus (Fig. 1B). SnoopRing cyclization was efficient when fusing SnoopTag on the N-terminus and SnoopCatcher on the C-terminus (Fig. 1B). Electrospray ionization mass spectrometry (MS) confirmed the loss of ammonia for both the PilinRing and SnoopRing upon isopeptide bond formation (Fig. S1). Small amounts of high molecular weight forms were produced by both PilinRing and SnoopRing systems (but not the point mutant controls), consistent with a proportion of intermolecular reaction, as seen with SpyRing cyclization (Fig. 1B). The k_{cat} and K_M values of the SpyRing, SnoopRing and PilinRing cyclized BLA constructs were comparable to those of the wild-type BLA construct (Fig. S2).

Comparison of different cyclization domains for β -lactamase resilience. We evaluated SnoopRing and PilinRing aggregation-resistance by heating the enzymes for 10 min at various temperatures, centrifuging at high speed to remove aggregates, and analyzing the remaining soluble protein by SDS-PAGE with Coomassie staining. SpyRing was previously found to provide full aggregation-resistance to temperatures up to 100 °C¹⁰. For BLA itself, little protein remained in solution above 37 °C (Fig. 2A). SnoopRing and PilinRing cyclization both led to major increases in aggregation resistance (Fig. 2A,B). For Pilin-C-BLA-Isopeptag, there was little loss of soluble protein even after heating to 100 °C (Fig. 2A,B). For SnoopTag-BLA-SnoopCatcher, solubility was well preserved after heating to 100 °C, although there was more aggregation at 75 °C than at 100 °C (Fig. 2A,B).

We then tested recovery of catalytic activity after this heating step followed by cooling to room temperature. Similar to the aggregation data, nearly all catalytic activity of BLA itself was lost after 55 °C heating (Fig. 2C). SnoopRing cyclization and PilinRing cyclization greatly improved the recovery of catalytic activity, although the retention of activity was less than with SpyRing cyclization, particularly after 75 °C heating (Fig. 2C). However, Pilin-C-BLA-Isopeptag exhibited the best thermal resilience after incubation at 55 °C (Fig. 2C).

The non-cyclized control SnoopTag KA-BLA-SnoopCatcher showed little difference in aggregation-resistance or catalytic recovery compared to BLA (Fig. S3A,C). The non-cyclized control Pilin-C KA-BLA-Isopeptag did have enhanced resilience to aggregation and more retention of catalytic activity, when compared to BLA, but was clearly inferior to the cyclized PilinRing (Fig. S3B,C).

Calorimetry of β -lactamase unfolding with alternative cyclization domains. To explore the difference in resilience for BLA cyclized by different domains, we performed DSC on SpyRing, PilinRing and SnoopRing systems. First we investigated the unfolding of the individual domains. SpyCatcher after reconstitution with SpyTag peptide unfolded at 88 °C, higher than SnoopCatcher reconstituted with SnoopTag peptide (70 °C) or Spy0128 (77 °C), the parent domain split to generate Pilin-C/Isopeptag (Fig. 3A).

We previously showed that SpyTag-BLA-SpyCatcher did not change the T_m for BLA unfolding, giving a similar peak at ~41 °C for BLA (Fig. 3A) and SpyTag-BLA-SpyCatcher¹⁰ (Fig. 3B,C). For SpyTag-BLA-SpyCatcher we also observed a peak from SpyTag/SpyCatcher unfolding at 85.0 °C (Fig. 3B,C)^{10,23}. For the SnoopRing and its KA control, surprisingly there was a small increase in the BLA T_m to 47.0 °C/47.6 °C (Fig. 3B,C). We suggest that the 64.1 °C peak is likely to correspond to unfolding of the SnoopTag/SnoopCatcher domain and the 52.2 °C peak to unfolding of the SnoopTag KA/SnoopCatcher domain (Fig. 3B,C).

For the PilinRing and its non-cyclized control, the T_m for BLA unfolding was ~41 °C, the same as SpyTag-BLA-SpyCatcher (Fig. 3B,C). We suggest that the 72.9 °C peak is likely to correspond to unfolding of the Pilin-C/Isopeptag domain and the 55.9 and 62.4 °C peaks to unfolding of Pilin-C KA/Isopeptag (Fig. 3B,C). Therefore, as for SpyTag/SpyCatcher, cyclization via an isopeptide bond-forming domain had no effect (PilinRing) or a minor effect (SnoopRing) on the transition temperature of the sandwiched BLA domain.

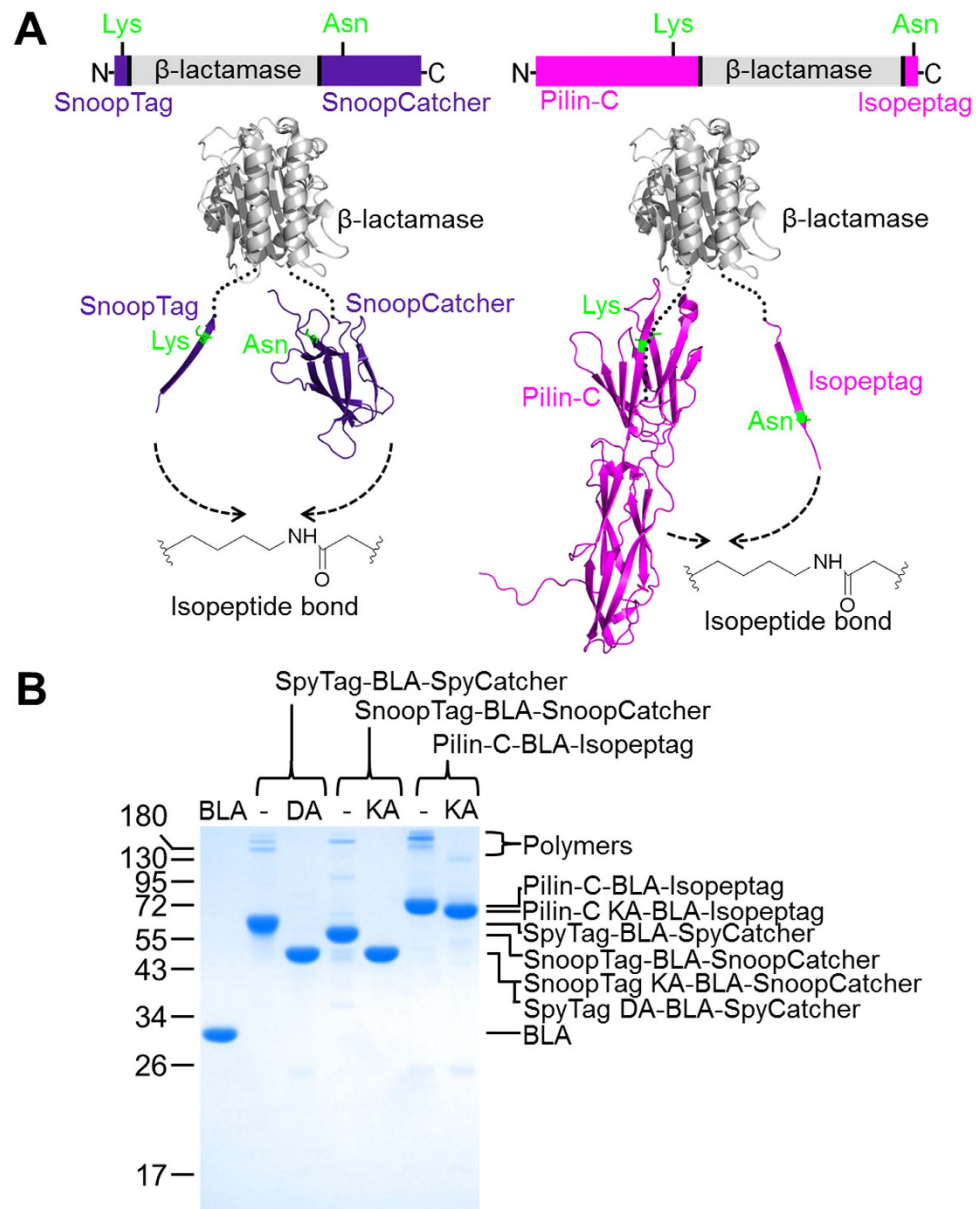


Figure 1. Enzyme cyclization using alternative isopeptide-forming domains. (A) Schematic of SnoopRing and PilinRing cyclization of β -lactamase (BLA). Proteins are shown in cartoon format, with reacting residues shown in green in stick format. (B) SDS-PAGE analysis of SpyRing, SnoopRing and PilinRing cyclization. Each purified protein is shown alongside the non-reactive control (DA or KA), after staining with Coomassie.

Overall, PilinRing cyclization improved enzyme resilience substantially, but gave less catalytic recovery than SpyRing cyclization. Since Pilin-C is also much larger than SpyCatcher (31 kDa rather than 12 kDa), subsequent investigation focused on advancing and understanding SpyRing cyclization.

SpyRing cyclization made phytase thermo-resilient. We previously showed how SpyRing cyclization conferred resilience on BLA (7 Å between termini) and dihydrofolate reductase (15 Å between termini)¹⁰. To explore an industrially-important enzymatic activity with a much larger distance between termini, we tested cyclization of a phytase. The crystal structure of PhyC phytase from *Bacillus subtilis* has been previously determined²⁴: the direct distance between the resolved N- and C-termini of PhyC is 29 Å (Fig. 4A). SpyTag-PhyC-SpyCatcher cyclized efficiently, based on the loss of H₂O from isopeptide bond formation in MS (Fig. S4A) and the reduction in gel mobility compared to the non-cyclized SpyTag DA-PhyC-SpyCatcher control (Fig. 4B). SpyTag-PhyC-SpyCatcher remained active, exhibiting comparable specific activity to PhyC (Fig. S5). Heat-inactivation of phytases is a major challenge limiting their application for improving nutrition¹⁸. PhyC remained soluble after heating at 55 °C but aggregated at 75 °C (Fig. 4C). SpyRing cyclization led to a major increase in PhyC thermal resilience, with most of the enzyme remaining in solution even after heating at 100 °C

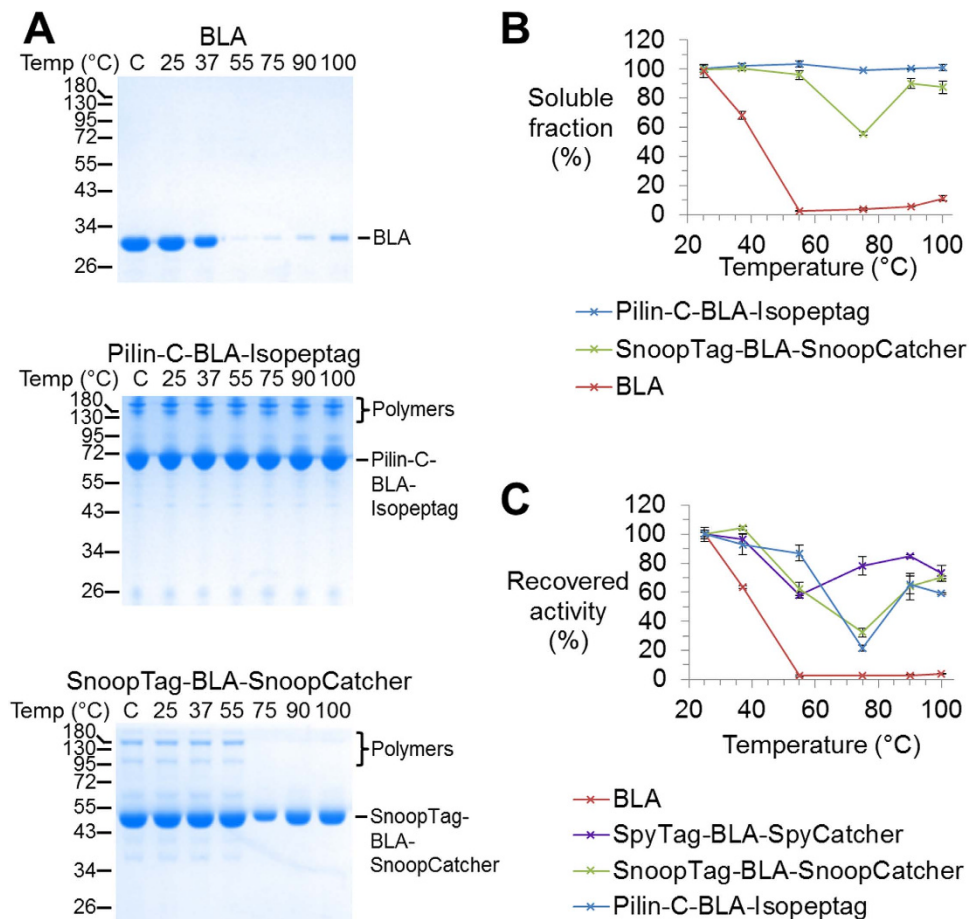


Figure 2. SnoopRing and PilinRing cyclization conferred thermal resilience. (A) Cyclization decreased heat-induced aggregation. BLA, Pilin-C-BLA-Isopeptag and SnoopTag-BLA-SnoopCatcher were heated at the indicated temperature for 10 min, centrifuged, and the supernatant analyzed by SDS-PAGE with Coomassie staining. C is control without incubation. (B) Plot of heat-induced aggregation, from quantifying SDS-PAGE. (C) Cyclization enhanced the catalytic activity following heating. BLA, SnoopTag-BLA-SnoopCatcher, Pilin-C-BLA-Isopeptag and SpyTag-BLA-SpyCatcher were incubated for 10 min at the indicated temperature, before returning to RT and then running a nitrocefin colorimetric activity assay. The initial rates of reaction were calculated using the linear portion of the enzyme curves. Data were normalized using the initial rate of reaction at 25 °C as 100% recovered activity. (All are mean of triplicate \pm 1 s.d.; some error bars are too small to be visible.)

(Fig. 4C). Most of PhyC's catalytic activity was lost following 75 °C heating, but the SpyRing PhyC retained most of its activity even after 90 °C heating (Fig. 4D).

The non-cyclized control, SpyTag DA-PhyC-SpyCatcher behaved similarly to PhyC in both aggregation-resistance and recovery of catalytic activity following heating, so covalent cyclization was essential for SpyRing-mediated resilience of PhyC (Fig. S4).

Secondary structure and calorimetric investigation of SpyRing phytase resilience. To understand better the basis for SpyRing phytase resilience, we looked for signatures of unfolding transitions upon heating. The T_m for unfolding of PhyC by DSC was not substantially shifted upon cyclization (PhyC 69.8 °C, SpyTag-PhyC-SpyCatcher 70.0 °C) (Fig. 5). For SpyTag-PhyC-SpyCatcher (but not PhyC or SpyTag DA-PhyC-SpyCatcher) a 2nd transition was seen at 91.5 °C, which is likely to correspond to unfolding of the SpyTag/SpyCatcher domain (Fig. 5). This temperature is slightly higher than the 85.0 °C SpyTag/SpyCatcher transition from SpyTag-BLA-SpyCatcher (Fig. 3A). The difference in T_m might be due to a difference in buffer used for DSC (T_m of 85.0 °C in PBS pH 7.4 and T_m of 91.5 °C in 50 mM Tris-HCl pH 7.0 with 2 mM CaCl₂) or might be an effect of PhyC stabilizing the SpyTag/SpyCatcher domain.

We then used circular dichroism (CD) to explore how heating affected secondary structure. We measured the ellipticity of the sample from 185–260 nm. For PhyC and SpyTag DA-PhyC-SpyCatcher there was little change in the spectrum at 55 °C, but at 75 °C and higher there was a general loss of signal, which did not recover upon cooling (Fig. S6). We observed aggregation for these proteins in the cuvette. However, for SpyRing phytase there was less perturbation at 75 and 90 °C (Fig. S6). The CD signal for SpyRing phytase did recover after cooling from

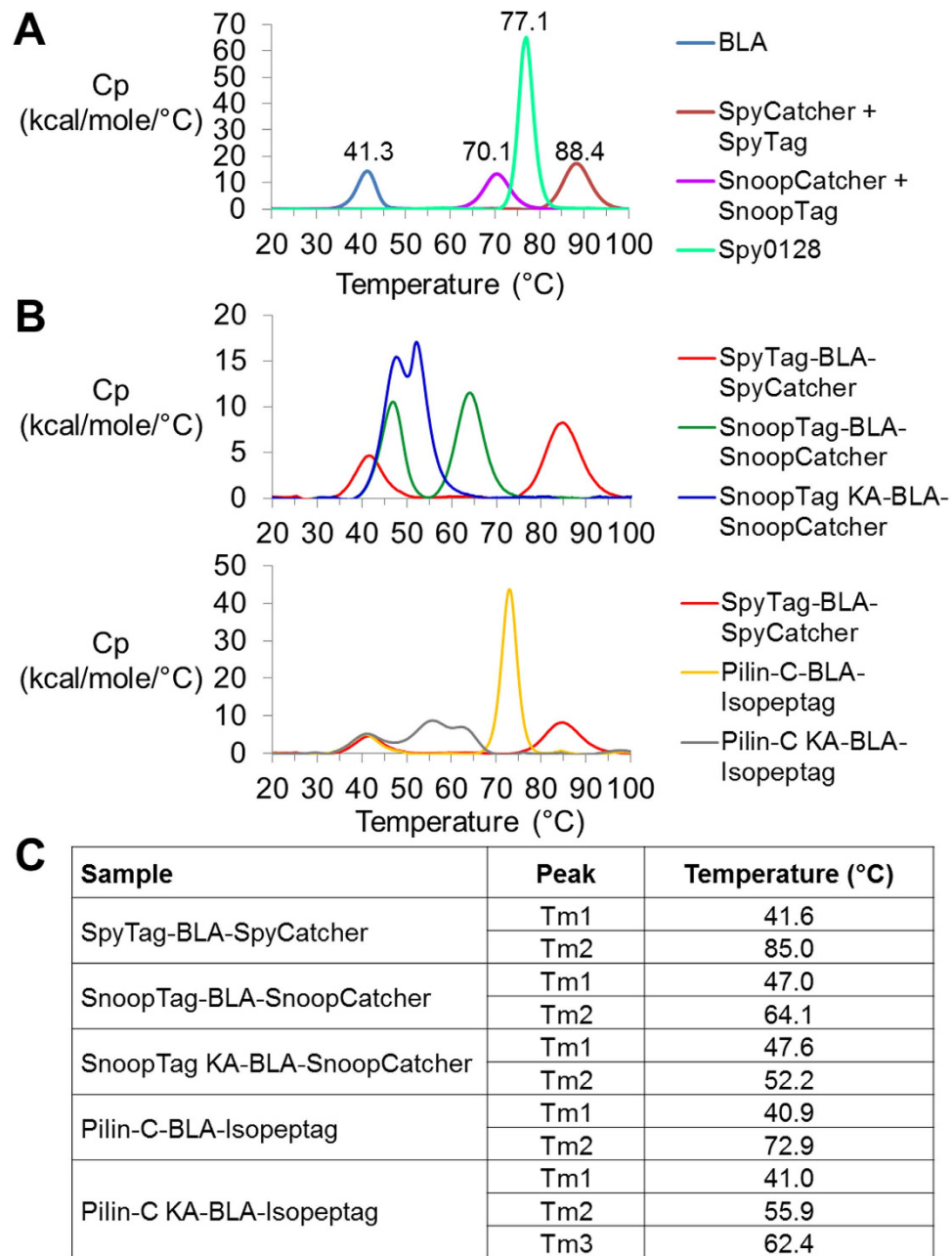


Figure 3. DSC comparison of SpyRing, SnoopRing and PilinRing BLA. (A) DSC showing the melting profiles of BLA overlaid with SpyCatcher + SpyTag peptide, SnoopCatcher + SnoopTag peptide, and Spy0128, giving the specific heat capacity (Cp) of each protein scanned from 20–100 °C at 1 °C/min. (B) DSC showing the melting profile of SpyTag-BLA-SpyCatcher overlaid with SnoopTag (KA)-BLA-SnoopCatcher or Pilin-C (KA)-BLA-Isopeptag, analyzed as in (A). (C) Tm values for peaks observed in (B).

75 and 90 °C (Fig. S6), although interestingly the recovery was less complete than anticipated from the recovery of catalytic activity (Fig. 4D).

SpyRing enzymes could be purified simply by heating. Enzyme purification often uses multiple chromatography steps, which can be time-consuming and expensive. We hypothesized that the ability of SpyRing cyclization to give extreme resilience to heating could permit a simple route to purification, since most of the endogenous cellular proteins might aggregate with heating²⁵. Rather than starting with purified enzymes as previously, we explored heating the lysate obtained from enzyme over-expression in *E. coli*. PhyC was the major band on the Coomassie-stained gel of *E. coli* total cell lysate. While the heating at 75–90 °C removed most of the background proteins, heating also aggregated most of the PhyC (Fig. 6A). However, the SpyTag-PhyC-SpyCatcher band in the lysate showed minimal change in intensity after heating from 75–90 °C, while most endogenous proteins were depleted (Fig. 6A). Since 75 °C heating gave similar depletion of endogenous proteins as 90 °C

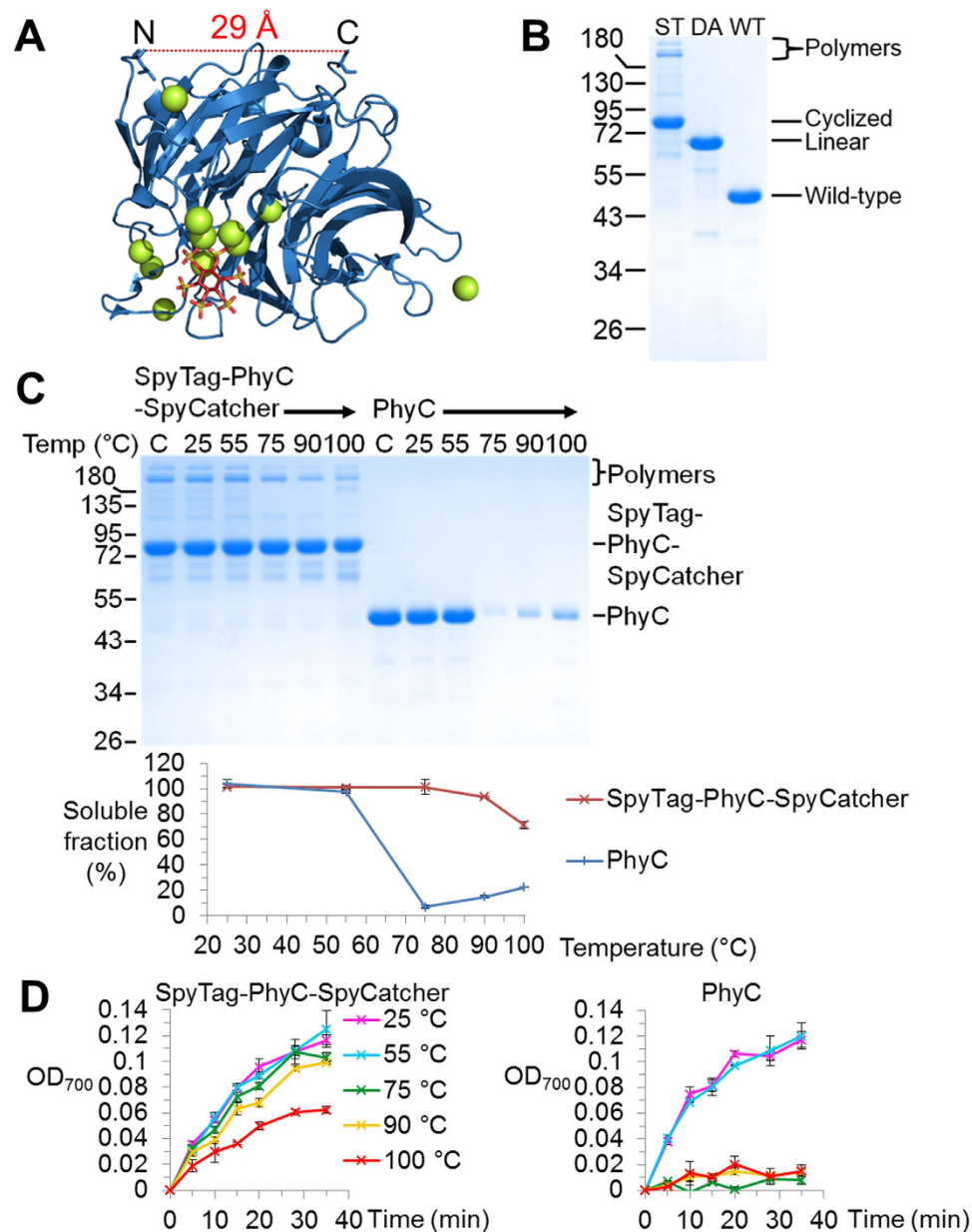


Figure 4. SpyRing cyclization of phytase increased the thermal resilience. (A) Crystal structure of Phyc phytase from *Bacillus subtilis* in cartoon format, with the substrate analog myo-inositol hexasulfate in stick format (based on PDB 3AMR). Spheres represent calcium ions and the distance between termini is marked. (B) Cyclization caused a gel shift. SpyTag-PhyC-SpyCatcher (ST), SpyTag DA-PhyC-SpyCatcher (DA) and PhyC (WT) were boiled in SDS-loading buffer and analyzed by SDS-PAGE with Coomassie staining. (C) SpyRing cyclization improved aggregation-resistance. SpyTag-PhyC-SpyCatcher or PhyC were heated at the indicated temperature for 10 min, centrifuged and the supernatant analyzed by SDS-PAGE with Coomassie staining. C is control without incubation. Data from triplicate measurements were then plotted. (D) SpyRing cyclization improved the recovered activity after heating. SpyTag-PhyC-SpyCatcher or PhyC were incubated for 10 min at the indicated temperature, before returning to RT and then running a colorimetric activity assay for phosphate release from phytic acid. (All are mean of triplicate \pm 1 s.d.; some error bars are too small to be visible.)

(Fig. 6A), 75 °C heating was used subsequently. Typically the first step in purification does not purify to homogeneity, but SpyTag-PhyC-SpyCatcher heat purification gave a good purity in comparison to Ni-NTA purification (Fig. 6B). There were two major impurities from heat purification of SpyTag-PhyC-SpyCatcher at ~110 kDa and >180 kDa, neither of which were present in the heated PhyC sample (Fig. 6B). Therefore we hypothesize that the >180 kDa band is a product of intermolecular SpyTag-PhyC-SpyCatcher reaction.

Performing a similar approach for heat purification of SpyRing BLA also showed good recovery, with some impurities present and also more recovery of heat-stable SpyTag-BLA-SpyCatcher polymers than with Ni-NTA

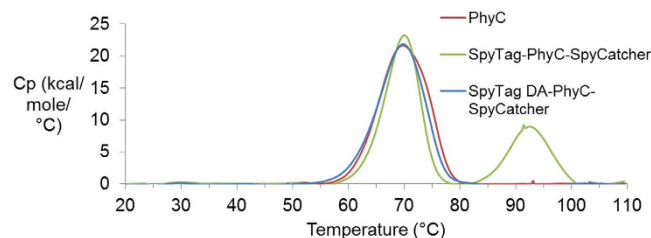


Figure 5. Analysis of SpyRing phytase by DSC. DSC of SpyTag (DA)-PhyC-SpyCatcher and PhyC. DSC gave the specific heat capacity (C_p) of each enzyme, scanning from 20–110 °C at 1 °C/min.

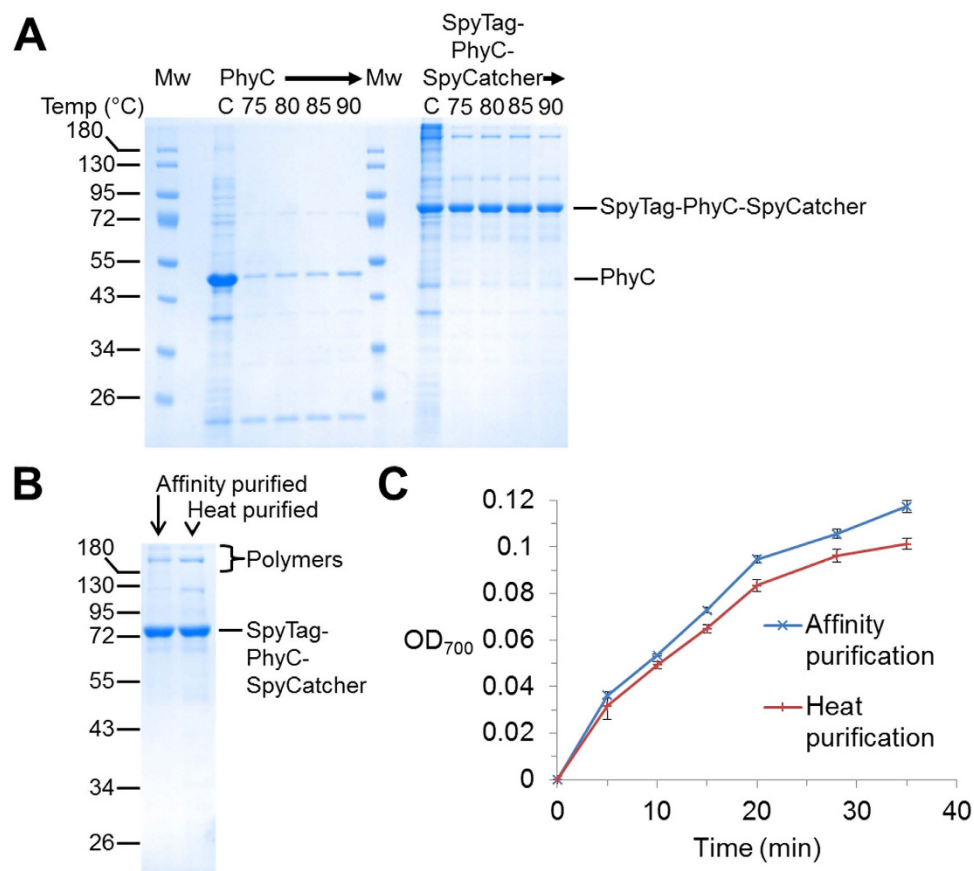


Figure 6. SpyRing cyclization allowed enzyme purification just by heating. (A) Heat-based purification of phytase. *E. coli* lysate expressing PhyC or SpyTag-PhyC-SpyCatcher was heated for 10 min at the indicated temperature, centrifuged, and the supernatant analyzed by SDS-PAGE with Coomassie staining. C is control without incubation. Mw are the molecular weight markers. (B) Comparing purity between heat-purified and affinity-purified phytase. SpyTag-PhyC-SpyCatcher either affinity-purified by Ni-NTA or heat-purified (normalized to give an equal intensity of the SpyTag-PhyC-SpyCatcher band) was boiled in SDS-loading buffer and analyzed by SDS-PAGE with Coomassie staining. (C) Heat purified phytase was still active. Catalytic activity of SpyTag-PhyC-SpyCatcher purified by either affinity chromatography or by heat purification (normalized by densitometry for an equal intensity of the SpyTag-PhyC-SpyCatcher band) was tested by a colorimetric activity assay for phosphate release from phytic acid. (All are mean of triplicate \pm 1 s.d.; some error bars are too small to be visible.)

purification (Fig. S7A,B). Importantly for both SpyRing phytase (Fig. 6C) and SpyRing BLA (Fig. S7C), the recovered protein had comparable catalytic activity from heat purification when compared to affinity purification.

Discussion

We have shown that cyclization with SpyTag/SpyCatcher gave superior resilience to other spontaneous isopeptide-forming domains of distinct sizes and reactive chemistries. SpyRing cyclization conferred resilience on phytase, an industrially-important class of enzyme with termini 29 Å apart. The mechanism of SpyRing

resilience was studied through DSC and CD, indicating that cyclization by an isopeptide bond-forming domain did not change the temperature for initial unfolding but is likely to facilitate refolding. The resilience to thermal inactivation of SpyRings allowed normally heat-labile enzymes to be purified simply by heating of cell lysate.

The alternative isopeptide-forming partners, Pilin-C/Isopeptag and SnoopCatcher/SnoopTag, allowed efficient enzyme cyclization, even though their reaction rate (when tested intermolecularly) is slower than SpyCatcher/SpyTag^{11,19,21}. Both PilinRing and SnoopRing cyclization gave resilience to heat-induced aggregation/inactivation, even at 100 °C, so enzyme resilience from cyclization by isopeptide bond-forming domains is a general phenomenon. Non-reactive point mutants confirmed that isopeptide bond formation was important to the effect on enzyme resilience. Inability to form the isopeptide bond had two effects: lowering the T_m of the fused partner and untethering the termini, both likely to decrease the enzyme's resilience. The degree of resilience from PilinRing or SnoopRing cyclization for BLA was not as complete as with SpyRing cyclization. For PilinRing and SnoopRing cyclization, recovery of activity after 75 °C heating was less efficient than after 100 °C heating. Previous studies have suggested that temperature may influence the partition between different unfolded states, some of which favor refolding and some of which favor aggregation^{26,27}. The importance of the cyclization framework for determining the extent of resilience is consistent with the large difference in BLA thermo-resilience reported through split intein cyclization (~5 °C increase)⁵ compared to SpyRing cyclization (>60 °C increase)¹⁰. It is also consistent with our previous work which showed that the cyclized SpyTag-BLA-SpyCatcher construct exhibited a greater thermal resilience than a BLA-CnaB2 fusion construct¹⁰. PilinRing cyclization did give excellent resistance to aggregation, but after heating not all the soluble enzyme was functional. Resilience did not correlate with the size of the cyclizing domain, since Pilin-C is much bigger than SpyCatcher, but resilience did correlate with the unfolding temperature of the cyclizing domain. Interestingly all three cyclization systems stabilized the sandwiched enzyme from aggregation at 100 °C where DSC indicates that the Tag/Catcher domain would have unfolded.

SpyRing cyclization had a major effect in increasing the thermal resilience of PhyC phytase. Extensive efforts have been made to engineer different classes of phytases for high stability but phytase inactivation when food pellets are heat-sterilized is still a significant issue and so our SpyRing phytase provides a new direction for this challenge^{18,28}. Phytase supplementation has already shown success in human trials for improving dietary uptake of iron and zinc²⁹. Alternatives to phytase supplementation include the engineering of crops expressing phytase¹⁸ or “Enviropig”, a genetically-modified pig producing phytase in its saliva³⁰. However, eating transgenic organisms encounters a lot of resistance from the general public³¹.

It is commonly known that enzymes from hyperthermophiles, such as Taq DNA polymerase from *Thermus aquaticus*, can be expressed in *E. coli* and purified simply by heating^{25,32}. Establishing such a simple purification route for enzymes that are not intrinsically thermostable could have academic and industrial importance. We showed here that SpyRing cyclization allowed substantial heat-purification of BLA and phytase with high retention of activity. Purification was not dissimilar to that achieved by affinity purification, although the protein was not purified to homogeneity³³. Nevertheless orthogonal polishing steps may then be used to purify further. Also, for many industrial processes, such as nutritional supplementation or biotransformations, moderate purity is often sufficient. Fusing proteins to thermostable domains was previously shown to allow stabilization³⁴ and heat-purification of proteins of interest, but this required the protein of interest to be substantially smaller than the thermostable domain³⁵. In contrast, here SpyRing cyclization was effective in conferring resilience on fused enzymes substantially larger than SpyTag/SpyCatcher.

SpyRings represent a simple and versatile approach to increase the thermal resilience of enzymes. Future work will apply this technology to other globally-important enzymes and endeavor to improve resilience even further, by increasing SpyTag/SpyCatcher's T_m or by harnessing the bacterial diversity of isopeptide-forming domains³⁶.

Methods

Cloning. KOD Hot Start DNA Polymerase (Roche) was used as the primary polymerase for PCR. DNA was transformed into competent *E. coli* DH5 α (Life Technologies). All constructs contained an N-terminal His₆ tag encoded in the pET28a plasmid (Novagen). The *Bacillus subtilis* PhyC insert (GenBank: JQ437256.1) was assembled using the DNAWorks method³⁷. The PhyC insert was amplified using primers 5' - CCGACGAAGGGTTCAGGGGGTTCGGTAAACATAAACTGAGCGATCCGTATCATTTCAC and 5' - GCGCCTCCGCTGCCACCACTCCCTTTGCCCGAACGATCGGTCAATTTACG. The insert was cloned into the SpyTag/SpyCatcher cassette using the method previously described¹⁰ to make pET28a SpyTag-PhyC-SpyCatcher (GenBank accession number KU608330) and pET28a SpyTag DA-PhyC-SpyCatcher. pET28a PhyC without the SpyTag/SpyCatcher fusions was cloned by amplifying the PhyC gene from pET28a SpyTag-PhyC-SpyCatcher using primers 5' - TATACATATGGGAAAACATAAACTGAGCGATCCGTATCATTTCAC and 5' - TTTTAAGCTTTCATTATTGCCCCAACGATCGGTCAATTTACG. The amplified product was inserted into pET28a using restriction digestion with NdeI (NEB) and HindIII (NEB), followed by ligation using T4 DNA ligase (NEB). pET28a SpyTag-BLA-SpyCatcher (GenBank KJ645919, Addgene ID 70943), pET28a SpyTag DA-BLA-SpyCatcher and pET28a BLA were described previously¹⁰. pDEST14 SpyCatcher¹¹, pET28a Spy0128¹⁹ and pET28a RrgACatcher G842T (SnoopCatcher G848D)²¹ were as described. pET28a SnoopTag-BLA-SnoopCatcher (GenBank accession number KU608331) was cloned using overlap extension PCR³⁸ followed by digestion with NdeI and HindIII and ligation into pET28a. SnoopTag is based on the N-terminal β -strand of RrgA's D4 domain (residues 734–748, numbering from PDB ID 2WW8)²². SnoopCatcher is based on residues 749–860 of *Streptococcus pneumoniae* adhesin RrgA's D4 domain (numbering from PDB ID 2WW8). The first fragment containing the SnoopTag-BLA component was amplified from SpyTag-BLA-SpyCatcher using primers 5' - ATTACAT-ATGGGAAAACCTGGGGGACATCGAATTCATCAAAGTAAACAAAGGTTTCAGGGGGTTCGGGTCACC and 5' - CTAAACACGGCACCACGCAGCGGCTTCCACTGCCACCACTCCCCCAATGC. The second fragment containing the SnoopCatcher component was amplified from the RrgACatcher G842T construct²¹ using primers

5'- AAGCCGCTGCGTGGTGCCG and 5'- ATTAAAGCTTTCATTATTTCCGGCGGTATCGGTTTCATTGGTG. pET28a SnoopTag KA-BLA-SnoopCatcher (K742 to A) was generated using pET28a SnoopTag-BLA-SnoopCatcher as a template and primer 5'- CCCTGAACCTTTGTTTACTGCGATGAATTCGATGTCCCC and its reverse complement by QuikChange. pET28a Pilin-C-BLA-Isopeptag (GenBank accession number KU608332) was cloned using Gibson assembly³⁹ with Gibson Assembly Master Mix (NEB). The vector was amplified using primers 5'- TCCCATATGGCTGCCGCGCGG and 5'- AAGCTTGCGGCCGCACTCGAGC using pET28a SpyTag-BLA-SpyCatcher as a template. The Pilin-C fragment was generated using primers 5'- CCGCGCGGCAGCCATATGGGAGCTACAACAGTTCCAGGGGAGAC and 5'- GGTGACCGGAACCCCTGAACCAATGGTCATATCTTTATCAGTAGATGTCTCTTG using pET28a Pilin-C¹⁹ as a template. The BLA-Isopeptag fragment was amplified using primers 5'- GGTTACAGGGGTTCCGGTAC and 5'- GCTCGAGTGCAGCCGCAAGCTTTCATTATTCGGCATCTTTTGTGGTAAAGGTAATGGTCATATCTTTATCGGTTCCACTGCCACCCTCCCC using pET28a SpyTag-BLA-SpyCatcher as a template. pET28a Pilin-C KA-BLA-Isopeptag was generated using pET28a Pilin-C-BLA-Isopeptag as a template and primer 5'- TCTACTACATTAACGGTGAAGGCAAAAGTTTCAGGTA CCGGTGG and its reverse complement by QuikChange. All constructs were verified by Sanger sequencing.

Recombinant protein expression and purification. Samples for MS were expressed in *E. coli* B834 DE3 cells (Novagen) in the absence of glucose to avoid gluconylation⁴⁰. Saturated cultures were diluted 1 in 100 and grown at 37 °C in LB with 0.5 mg/mL kanamycin to an OD₆₀₀ of 0.5 and induced using 0.4 mM isopropyl β-D-1-thiogalactopyranoside (IPTG, Melford Labs) at 30 °C for 3 hours. For all other purposes, samples were expressed in *E. coli* BL21 DE3 RIPL (Stratagene), except Pilin-C (KA)-BLA-Isopeptag was expressed in *E. coli* B834 DE3. Samples were grown in LB with 0.8% glucose and 0.5 mg/mL kanamycin overnight. Saturated cultures were diluted 1 in 100 and grown at 37 °C until cultures reached an OD₆₀₀ of 0.5. The cultures were induced with 0.4 mM IPTG and grown for 16 hours at 18 °C. Samples were spun down at 4,000 g for 20 minutes and the pellet was re-suspended in 50 mM Tris-HCl pH 7.8 with 300 mM NaCl (Ni-NTA buffer) containing 1 mM phenylmethylsulfonyl fluoride (PMSF, Roche) and 1× EDTA-free mixed protease inhibitors (Roche). Protein purification was performed using Ni-NTA resin (Qiagen). Samples were allowed to bind to the resin for 30 minutes at 4 °C. The sample was added onto a poly-prep column (Bio-Rad), washed with 40 resin volumes of Ni-NTA buffer with 10 mM imidazole, then washed with 20 resin volumes of Ni-NTA buffer with 30 mM imidazole and eluted with 4 resin volumes of Ni-NTA buffer with 75 mM imidazole. SpyTag (DA)-BLA-SpyCatcher, BLA, SnoopTag (KA)-BLA-SnoopCatcher, and Pilin-C (KA)-BLA-Isopeptag samples used in solubility assays, enzymatic assays and SDS-PAGE assays were dialyzed 3 times in PBS. SpyTag (DA)-PhyC-SpyCatcher and PhyC samples used in solubility assays, enzymatic assays and SDS-PAGE assays were dialyzed 3 times in 50 mM Tris-HCl pH 7.0 with 2 mM CaCl₂. SnoopTag (KA)-BLA-SnoopCatcher, Pilin-C (KA)-BLA-Isopeptag, and SpyTag (DA)-PhyC-SpyCatcher samples for MS were dialyzed 3 times in 10 mM ammonium acetate. SpyTag (DA)-PhyC-SpyCatcher and PhyC samples used for CD were dialyzed 3 times into 10 mM Tris-HCl pH 8.0 with 2 mM CaCl₂ and then purified again using anion-exchange to polish the samples and remove polymeric species. Anion-exchange chromatography was performed using a 1 mL HiTrap HP Q column (GE Healthcare) on an ÄKTA purifier (GE Healthcare). Fractions were collected and concentrated using a Vivaspin 6 centrifugal concentrator (Sartorius) with a 5 kDa cut-off and dialyzed 3 times in 10 mM Tris-SO₄ (Tris base with pH adjusted using H₂SO₄) pH 7.0 with 2 mM CaSO₄. Samples used to obtain values for kinetic parameters or units of activity were further purified by gel filtration chromatography to remove multimers. Gel filtration was performed using a Superdex 200 10/300 GL column (GE Healthcare) on an ÄKTA purifier. Fractions containing only enzyme monomer were collected and concentrated using a Vivaspin 6 centrifugal concentrator with a 5 kDa cut-off. Concentrations were determined from OD₂₈₀ and the calculated molar extinction coefficients from ProtParam. For the comparative kinetic and activity studies, protein concentrations were determined using a Pierce bicinchoninic acid (BCA) Protein Assay Kit (Thermo Fisher Scientific).

Reaction of SpyCatcher with SpyTag peptide and SnoopCatcher with SnoopTag peptide.

SpyTag peptide (GAHIVMVDAYKPTK) and SnoopTag peptide (GKLGDIIEFIKVNKGY) were synthesized by Insight Biotechnology at >95% purity, validated by HPLC and mass spectrometry. SpyCatcher was allowed to react with a 4-fold molar excess of SpyTag at 20 °C for 2 hours in PBS. SnoopCatcher was allowed to react with a 3-fold molar excess of SnoopTag at 20 °C for 20 hours in PBS. Each sample was then dialyzed 3 times in PBS. The reaction was confirmed by the gel shift on 20% SDS-PAGE¹⁹.

SDS-PAGE. SDS-PAGE was run on 12% (for phytase constructs and heat purification gels) or 14% (for β-lactamase constructs) polyacrylamide gels in an XCell SureLock module (Life Technologies). Gels were run at 200 V for 1 hour and then stained with InstantBlue Coomassie (Expedeon). For β-lactamase constructs, a final concentration of 100 mM dithiothreitol (DTT, Sigma) was added. For phytase constructs, a final concentration of 100 mM ethylenediaminetetraacetic acid (EDTA) was added to remove tightly-bound divalent cations affecting phytase mobility. Samples were mixed with 6× SDS-PAGE loading buffer (0.23 M Tris-HCl, 0.24% glycerol, 6.7% SDS, and 12 mM bromophenol blue) and heated at 95 °C for 7 minutes in a Bio-Rad C1000 Thermal cycler. Gels were imaged on a Bio-Rad ChemiDoc XRS+ and analyzed using Image Lab 3.0 software (Bio-Rad).

Temperature-dependent solubility assay. 20 μL 25 μM BLA construct in PBS with 100 mM DTT was incubated at 10, 25, 37, 55, 75, 90 or 100 °C for 10 minutes and then cooled to 10 °C on a Bio-Rad C1000 Thermal Cycler. 20 μL 10 μM phytase construct in 50 mM Tris-HCl pH 7.0 with 2 mM CaCl₂ was incubated at 10, 25, 55, 75, 90 or 100 °C for 10 minutes and then cooled to 10 °C on a Bio-Rad C1000 Thermal Cycler. The ramp rate was 3 °C/s. Samples were spun at 17,000 g at 4 °C for 30 minutes and the supernatant was removed for SDS-PAGE.

Every gel had a triplicate loading control to normalize the samples. Loading samples consisted of the protein sample that had been kept at 10 °C. The loading control was defined as 100% soluble fraction. Bands were quantified using densitometry values obtained from the Image Lab 3.0 software.

β -lactamase thermal resilience enzymatic assay. A 96 well clear flat-bottom polystyrene plate (Greiner) was pre-blocked with 200 μ L PBS with 3% bovine serum albumin (BSA, \geq 98%, Sigma) at 37 °C for 2 hours. The plate was then rinsed twice using 0.1 M NaH_2PO_4 pH 7.0 with 1 mM EDTA. 20 μ L 25 μ M BLA construct in PBS with 100 mM DTT was incubated at 10, 25, 37, 55, 75, 90 or 100 °C for 10 minutes and then cooled to 10 °C on a Bio-Rad C1000 Thermal Cycler (3 °C/s). The protein was diluted 1 in 400 using 0.1 M NaH_2PO_4 pH 7.0 with 1 mM EDTA and 1% BSA. 3 nM of BLA construct was allowed to react with 100 μ M nitrocefin (Merck) in 0.1 M NaH_2PO_4 pH 7.0 with 1 mM EDTA at 20 °C. The reaction was quenched at different time-points by adding an equal volume of 500 μ M potassium clavulanate (Sigma) dissolved in 0.1 M NaH_2PO_4 pH 7.0 with 1 mM EDTA. Care was taken to protect the plates from direct light. Half of the volume was transferred into a clean 96 well clear flat-bottom polystyrene plate to remove bubbles that could interfere with absorbance measurements. OD_{486} was measured using a SpectraMax M3 microplate reader (Molecular Devices). Absorbance was corrected for the dilution caused by the addition of potassium clavulanate. Samples were blanked against a control lacking enzyme.

β -lactamase kinetics assay. BLA activity was measured as previously⁴¹. 2.0 mL sample cups (Kartell Labware) were pre-blocked using 50 mM NaH_2PO_4 pH 7.0 with 3% BSA at 37 °C for 2 hours. The sample cups were then rinsed twice using 50 mM NaH_2PO_4 pH 7.0. Enzymes were diluted in the sample cup to a concentration of 0.25 nM using 50 mM NaH_2PO_4 pH 7.0 with 0.1% BSA. Samples were then allowed to react in 50 mM NaH_2PO_4 pH 7.0 with 100, 50, 30, 20, 15, or 10 μ M Nitrocefin (Oxoid) in a Gallery Plus Automated Photometric Analyzer (Thermo Scientific) at 30 °C. Readings were taken every 9 seconds for a period of 99 seconds at a wavelength of 500 nm ($\Delta\epsilon_{500} = 15,900 \text{ M}^{-1}\text{cm}^{-1}$)⁴². The first 6 data points were linear and were used to obtain the initial rates of reaction. A Lineweaver-Burk plot was used to extrapolate the kinetic parameters. Errors for kinetic values were obtained by calculating the kinetics for 3 separate sets of data and then calculating the average and standard deviation of the 3 kinetic values.

Phytase thermal resilience enzymatic assay. A 96 well clear flat-bottom polystyrene plate (Greiner) was pre-blocked with 200 μ L 50 mM Tris-HCl pH 7.0 with 2 mM CaCl_2 and 3% BSA at 37 °C for 2 hours. The plate was then rinsed twice using 50 mM Tris-HCl pH 7.0 with 2 mM CaCl_2 . 20 μ L of 10 μ M phytase construct in 50 mM Tris-HCl pH 7.0 with 2 mM CaCl_2 was incubated at 10, 55, 75, 90 or 100 °C for 10 minutes and then cooled to 10 °C on a Bio-Rad C1000 Thermal Cycler (3 °C/s). The protein was diluted 1 in 26 using 50 mM Tris-HCl pH 7.0, 2 mM CaCl_2 , 10% glycerol, 1% BSA. 77 nM phytase construct was allowed to react with 2 mM phytic acid (Sigma) in 50 mM Tris-HCl pH 7.0 with 2 mM CaCl_2 and 10% glycerol at 50 °C. The reaction was quenched at different time points by adding an equal volume of 20% trichloroacetic acid. A solution containing 12 mM ammonium heptamolybdate (Sigma) and 4.3% H_2SO_4 was mixed in a 4 : 1 ratio with a solution containing 178 mM FeSO_4 (Scientific Laboratory Supplies) to make the color mix solution. 1 volume of color mix solution was added for every 2 volumes of quenched reaction solution. The plates were spun at 3,500 g at 20 °C in a Multifuge X3R (Thermo Scientific) for 10 minutes. Within 8 minutes, 60% of the solution (90 μ L of 150 μ L) was transferred into a clean 96 well clear flat-bottom polystyrene plate and OD_{700} was measured using a SpectraMax M3 microplate reader. Blank consisted of all the components minus phytase.

Phytase specific activity assay. Phytase activity was measured as previously⁴³. 40 nM phytase was incubated with 1.6 mM phytic acid at 37 °C for 1, 2, 3, 4, or 5 minutes in 100 mM Tris-HCl pH 7.5 with 1 mM CaCl_2 . The reaction was quenched by adding an equal volume of 20% trichloroacetic acid. Samples were spun at 17,000 g at 20 °C for 10 minutes and 90% of the supernatant was moved into a clean tube. A solution containing 12 mM ammonium heptamolybdate (Sigma) and 4.3% H_2SO_4 was mixed in a 4:1 ratio with a solution containing 178 mM FeSO_4 (Scientific Laboratory Supplies) to make the color mix solution. 1 volume of color mix solution was added for every 2 volumes of quenched reaction solution. The samples were then incubated at 25 °C for 20 minutes and then OD_{700} was measured using a Varian Cary 50 UV-Vis Spectrophotometer. For the blank, the enzyme was first added to 20% trichloroacetic acid to inactivate the enzyme before mixing with the substrate. In order to determine the specific activity, OD_{700} was converted to μ g of phosphate using a set of standards containing 20 to 100 μ M NaH_2PO_4 . A straight line of best fit was used to obtain the initial rate. The specific activity for each repeat was individually calculated and averaged. The error refers to 1 standard deviation from the mean.

Heat purification. Bacterial pellets obtained from an 800 mL bacterial culture were frozen at -80 °C and then thawed. Cells were resuspended in 8 mL 50 mM Tris-HCl pH 7.8 with 300 mM NaCl containing 1 mM phenylmethylsulfonyl fluoride (PMSF, Roche) and 1 \times EDTA-free mixed protease inhibitors (Roche, 1 tablet resuspended in 1.5 mL H_2O was 100 \times stock). The OD_{600} of the solution was 110–150 (as determined on a diluted sample of the resuspended cells). Cells were sonicated and centrifuged at 17,000 g for 20 minutes at 4 °C. The soluble fraction was removed. The OD_{280} of the solution was 60 (as determined on a diluted sample). Half of the cell lysate was purified using Ni-NTA affinity chromatography as described above and dialyzed 3 times into 50 mM Tris-HCl pH 7.0 with 2 mM CaCl_2 (PhyC constructs) or PBS pH 7.4 (BLA constructs) for use in the activity comparison later on. The other half was diluted 1 in 10 into 50 mM Tris-HCl pH 7.0 with 2 mM CaCl_2 (PhyC constructs) or PBS pH 7.4 (BLA constructs) The sample was split into 50 μ L aliquots and heated at 75, 80, 85 or 90 °C for 10 minutes in a Bio-Rad C1000 Thermal Cycler and then cooled to 10 °C. Samples were then centrifuged at 17,000 g at 4 °C for 30 minutes and the supernatant was removed and further analyzed. Samples heated to 75, 80, 85 or 90 °C were analyzed via SDS-PAGE to check their purity. For testing purity and activity, the concentration of SpyTag-PhyC-SpyCatcher from affinity purification was matched to the concentration of

SpyTag-PhyC-SpyCatcher from heat purification using densitometry of the SpyTag-PhyC-SpyCatcher band based on SDS-PAGE with Coomassie staining.

Mass spectrometry. The samples were analyzed using a Micromass LCT time-of-flight electrospray ionization mass spectrometer (Micromass UK). MassLynx V 4.00.00 (Waters Corporation) was used to convert the m/z spectrum to a mass spectrum using a Maximum Entropy algorithm. Predicted masses were obtained using ProtParam and by taking into account the change in mass that occurs when an isopeptide bond is formed (-18 for SpyCatcher, -17 for SnoopCatcher and Pilin-C)^{10,20,22}.

DSC. DSC profiles of PhyC, SpyTag (DA)-PhyC-SpyCatcher, SpyTag-BLA-SpyCatcher, SnoopTag (KA)-BLA-SnoopCatcher, Pilin-C (KA)-BLA-Isopeptag, BLA, Spy0128, SpyCatcher + SpyTag and SnoopCatcher + SnoopTag were measured on the VP Cap DSC (GE Healthcare). The DSC conditions to determine the T_m were $20\ \mu\text{M}$ protein in PBS pH 7.4 (BLA constructs, Spy0128, SpyCatcher + SpyTag and SnoopCatcher + SnoopTag) or $50\ \text{mM}$ Tris-HCl pH 7.0 with $2\ \text{mM}$ CaCl_2 (PhyC constructs) from 20 to $110\ ^\circ\text{C}$ at a scan rate of $1\ ^\circ\text{C}/\text{min}$ at a pressure of $3\ \text{atm}$. The baseline traces were subtracted from the sample traces and then normalized for concentration and volume using the MicroCal DSC Origin Pro 7.0 software (GE Healthcare). Samples containing only buffer were used to obtain the baseline traces.

CD. Circular Dichroism experiments were performed in $10\ \text{mM}$ Tris- SO_4 pH 7.0 with $2\ \text{mM}$ CaSO_4 buffer. Samples were analyzed on a J-815 Circular Dichroism Spectrometer (Jasco) using a $1\ \text{mm}$ path-length Spectrosil quartz cuvette (Starna Scientific). The temperature was controlled using a CDF-426S Peltier unit (Jasco). Far-UV CD spectra were obtained by incubating $0.15\ \text{mg}/\text{mL}$ protein at $10\ ^\circ\text{C}$, before ramping at $12\ ^\circ\text{C}/\text{min}$ to 55 , 75 or $90\ ^\circ\text{C}$. Samples were held at that temperature for 3 minutes before starting a read (the “During heating” trace). The scanning speed of the instrument was set to $50\ \text{nm}/\text{min}$ and scans were performed from 260 to $185\ \text{nm}$. After the read, samples were cooled to $10\ ^\circ\text{C}$. Samples were kept at $10\ ^\circ\text{C}$ for 3 minutes before taking another read (the “After cooling” trace). Four scans were recorded from each independent sample, the recorded spectra were averaged, and then subtracted by the averaged baseline spectrum (buffer alone). Spectra were smoothed using the Savitzky-Golay method⁴⁴ on the SpectraManager 2 software (Jasco). Ellipticity was converted to molar ellipticity using the SpectraManager 2 software.

Molecular visualization. Protein structures were rendered in PyMOL (DeLano Scientific), based on Protein Data Bank files 1ZG4⁴⁵, 3B2M²⁰, 2WW8²², and 3AMR²⁴.

References

- Kawedia, J. D. & Rytting, M. E. Asparaginase in Acute Lymphoblastic Leukemia. *Clin. Lymphoma Myeloma Leuk.* **14**, Supplement, S14–S17 (2014).
- Bhosale, S. H., Rao, M. B. & Deshpande, V. V. Molecular and industrial aspects of glucose isomerase. *Microbiol. Rev.* **60**, 280–300 (1996).
- Reetz, M. T. & Carballeira, J. D. Iterative saturation mutagenesis (ISM) for rapid directed evolution of functional enzymes. *Nat. Protoc.* **2**, 891–903 (2007).
- Evans, T. C., Jr, Benner, J. & Xu, M. Q. The *in vitro* ligation of bacterially expressed proteins using an intein from *Methanobacterium thermoautotrophicum*. *J. Biol. Chem.* **274**, 3923–3926 (1999).
- Iwai, H. & Plückthun, A. Circular β -lactamase: stability enhancement by cyclizing the backbone. *FEBS Lett.* **459**, 166–172 (1999).
- Camarero, J. A. & Muir, T. W. Biosynthesis of a Head-to-Tail Cyclized Protein with Improved Biological Activity. *J. Am. Chem. Soc.* **121**, 5597–5598 (1999).
- Scott, C. P., Abel-Santos, E., Wall, M., Wahnou, D. C. & Benkovic, S. J. Production of cyclic peptides and proteins *in vivo*. *Proc. Natl. Acad. Sci.* **96**, 13638–13643 (1999).
- Parthasarathy, R., Subramanian, S. & Boder, E. T. Sortase A as a novel molecular ‘stapler’ for sequence-specific protein conjugation. *Bioconjug. Chem.* **18**, 469–476 (2007).
- Goldenberg, D. P. & Creighton, T. E. Circular and circularly permuted forms of bovine pancreatic trypsin inhibitor. *J. Mol. Biol.* **165**, 407–413 (1983).
- Schoene, C., Fierer, J. O., Bennett, S. P. & Howarth, M. SpyTag/SpyCatcher Cyclization Confers Resilience to Boiling on a Mesophilic Enzyme. *Angew. Chem. Int. Ed.* **53**, 6101–6104 (2014).
- Zakeri, B. *et al.* Peptide tag forming a rapid covalent bond to a protein, through engineering a bacterial adhesin. *Proc. Natl. Acad. Sci.* **109**, E690–E697 (2012).
- Veggiani, G., Zakeri, B. & Howarth, M. Superglue from bacteria: unbreakable bridges for protein nanotechnology. *Trends Biotechnol.* **32**, 506–512 (2014).
- Bailey, R. L., West, K. P. & Black, R. E. The epidemiology of global micronutrient deficiencies. *Ann. Nutr. Metab.* **66** Suppl 2, 22–33 (2015).
- Allen, L., de Benoist, B., Dary, O. & Hurrell, R. *Guidelines on Food Fortification with Micronutrients*. (World Health Organization, 2006).
- Ye, X. *et al.* Engineering the Provitamin A (β -Carotene) Biosynthetic Pathway into (Carotenoid-Free) Rice Endosperm. *Science* **287**, 303–305 (2000).
- Bohlke, R. A., Thaler, R. C. & Stein, H. H. Calcium, phosphorus, and amino acid digestibility in low-phytate corn, normal corn, and soybean meal by growing pigs. *J. Anim. Sci.* **83**, 2396–2403 (2005).
- Selle, P. H., Ravindran, V., Bryden, W. L. & Scott, T. Influence of Dietary Phytate and Exogenous Phytase on Amino Acid Digestibility in Poultry: A Review. *J. Poult. Sci.* **43**, 89–103 (2006).
- Lei, X. G., Weaver, J. D., Mullaney, E., Ullah, A. H. & Azain, M. J. Phytase, a New Life for an ‘Old’ Enzyme. *Annu. Rev. Anim. Biosci.* **1**, 283–309 (2013).
- Zakeri, B. & Howarth, M. Spontaneous Intermolecular Amide Bond Formation between Side Chains for Irreversible Peptide Targeting. *J. Am. Chem. Soc.* **132**, 4526–4527 (2010).
- Kang, H. J., Coulibaly, F., Clow, F., Profit, T. & Baker, E. N. Stabilizing isopeptide bonds revealed in gram-positive bacterial pilus structure. *Science* **318**, 1625–1628 (2007).
- Veggiani, G. *et al.* Programmable polyproteins built using twin peptide superglue. *Proc. Natl. Acad. Sci.* doi:10.1073/pnas.1519214113 2016.
- Izoré, T. *et al.* Structural basis of host cell recognition by the pilus adhesin from *Streptococcus pneumoniae*. *Structure* **18**, 106–115 (2010).

23. Hagan, R. M. *et al.* NMR Spectroscopic and Theoretical Analysis of a Spontaneously Formed Lys-Asp Isopeptide Bond. *Angew. Chem. Int. Ed.* **49**, 8421–8425 (2010).
24. Zeng, Y.-F. *et al.* Crystal Structures of Bacillus Alkaline Phytase in Complex with Divalent Metal ions and Inositol Hexasulfate. *J. Mol. Biol.* **409**, 214–224 (2011).
25. Kirk, N. & Cowan, D. Optimising the recovery of recombinant thermostable proteins expressed in mesophilic hosts. *J. Biotechnol.* **42**, 177–184 (1995).
26. Wang, W. & Roberts, C. J. Non-Arrhenius Protein Aggregation. *AAPS J.* **15**, 840–851 (2013).
27. Sakamoto, R., Nishikori, S. & Shiraki, K. High temperature increases the refolding yield of reduced lysozyme: implication for the productive process for folding. *Biotechnol. Prog.* **20**, 1128–1133 (2004).
28. Ping, S.-Z., Zhang, W., Lin, M., Yan, Y.-L., Zhao, Z.-L., Lu, W. & Chen, M. Inventors; Biotechnology Research Institute, Chinese Academy of Agricultural Sciences, assignee. Cyclized phytase with improved heat stability and proteinase resistance. People's Republic of China patent CN101638642 A. 2010 Feb 3.
29. Troesch, B., Jing, H., Laillou, A. & Fowler, A. Absorption studies show that phytase from *Aspergillus niger* significantly increases iron and zinc bioavailability from phytate-rich foods. *Food Nutr. Bull.* **34**, S90–101 (2013).
30. Golovan, S. P. *et al.* Pigs expressing salivary phytase produce low-phosphorus manure. *Nat. Biotechnol.* **19**, 741–745 (2001).
31. Wu, F. Explaining public resistance to genetically modified corn: an analysis of the distribution of benefits and risks. *Risk Anal. Off. Publ. Soc. Risk Anal.* **24**, 715–726 (2004).
32. Tanaka, T., Kawano, N. & Oshima, T. Cloning of 3-Isopropylmalate Dehydrogenase Gene of an Extreme Thermophile and Partial Purification of the Gene Product. *J. Biochem. (Tokyo)* **89**, 677–682 (1981).
33. Kwon, S., Jung, Y. & Lim, D. Proteomic analysis of heat-stable proteins in *Escherichia coli*. *BMB Rep.* **41**, 108–111 (2008).
34. Pierre, B., Xiong, T., Hayles, L., Guntaka, V. R. & Kim, J. R. Stability of a guest protein depends on stability of a host protein in insertional fusion. *Biotechnol. Bioeng.* **108**, 1011–1020 (2011).
35. de Marco, A., Casatta, E., Savaresi, S. & Geerlof, A. Recombinant proteins fused to thermostable partners can be purified by heat incubation. *J. Biotechnol.* **107**, 125–133 (2004).
36. Kang, H. J. & Baker, E. N. Intramolecular isopeptide bonds: protein crosslinks built for stress? *Trends Biochem. Sci.* **36**, 229–237 (2011).
37. Hoover, D. M. & Lubkowsky, J. DNAWorks: an automated method for designing oligonucleotides for PCR-based gene synthesis. *Nucleic Acids Res.* **30**, e43 (2002).
38. Bryksin, A. V. & Matsumura, I. Overlap extension PCR cloning: a simple and reliable way to create recombinant plasmids. *BioTechniques* **48**, 463–465 (2010).
39. Gibson, D. G. *et al.* Enzymatic assembly of DNA molecules up to several hundred kilobases. *Nat. Methods* **6**, 343–345 (2009).
40. Geoghegan, K. F. *et al.* Spontaneous alpha-N-6-phosphogluconoylation of a 'His tag' in *Escherichia coli*: the cause of extra mass of 258 or 178 Da in fusion proteins. *Anal. Biochem.* **267**, 169–184 (1999).
41. Raquet, X. *et al.* TEM β -Lactamase Mutants Hydrolysing Third-generation Cephalosporins: A Kinetic and Molecular Modelling Analysis. *J. Mol. Biol.* **244**, 625–639 (1994).
42. Chen, C. C. H. & Herzberg, O. Relocation of the catalytic carboxylate group in class A β -lactamase: the structure and function of the mutant enzyme Glu166→Gln: Asn170→Asp. *Protein Eng.* **12**, 573–579 (1999).
43. Guerrero-Olazarán, M., Rodríguez-Blanco, L., Carreon-Treviño, J. G., Gallegos-López, J. A. & Viader-Salvadó, J. M. Expression of a Bacillus Phytase C Gene in *Pichia pastoris* and Properties of the Recombinant Enzyme. *Appl. Environ. Microbiol.* **76**, 5601–5608 (2010).
44. Savitzky, A. & Golay, M. J. E. Smoothing and Differentiation of Data by Simplified Least Squares Procedures. *Anal. Chem.* **36**, 1627–1639 (1964).
45. Stec, B., Holtz, K. M., Wojciechowski, C. L. & Kantrowitz, E. R. Structure of the wild-type TEM-1 beta-lactamase at 1.55 Å and the mutant enzyme Ser70Ala at 2.1 Å suggest the mode of noncovalent catalysis for the mutant enzyme. *Acta Crystallogr. D Biol. Crystallogr.* **61**, 1072–1079 (2005).

Acknowledgements

Funding was provided by BBSRC (C.S.), Sekisui Diagnostics (C.S., S.P.B.), and Oxford University Department of Biochemistry (M.H.). We thank Nick Major of Sekisui Diagnostics for helpful advice and the Molecular Biophysics Facility at Oxford University Department of Biochemistry.

Author Contributions

C.S. performed the experiments. C.S. and M.H. wrote the paper. C.S., S.P.B. and M.H. designed the research and analyzed data. All authors reviewed the manuscript.

Additional Information

Supplementary information accompanies this paper at <http://www.nature.com/srep>

Competing financial interests: M.H. is an inventor on a patent concerning peptide reaction via spontaneous amide bond formation (EP2534484).

How to cite this article: Schoene, C. *et al.* SpyRing interrogation: analyzing how enzyme resilience can be achieved with phytase and distinct cyclization chemistries. *Sci. Rep.* **6**, 21151; doi: 10.1038/srep21151 (2016).



This work is licensed under a Creative Commons Attribution 4.0 International License. The images or other third party material in this article are included in the article's Creative Commons license, unless indicated otherwise in the credit line; if the material is not included under the Creative Commons license, users will need to obtain permission from the license holder to reproduce the material. To view a copy of this license, visit <http://creativecommons.org/licenses/by/4.0/>