

SCIENTIFIC REPORTS



OPEN

A Novel Equivalent Agglomeration Model for Heat Conduction Enhancement in Nanofluids

Jize Sui^{1,2}, Liancun Zheng², Xinxin Zhang¹, Ying Chen³ & Zhengdong Cheng^{4,5}

Received: 23 October 2015

Accepted: 09 December 2015

Published: 18 January 2016

We propose a multilevel equivalent agglomeration (MEA) model in which all particles in an irregular cluster are treated as a new particle with equivalent volume, the liquid molecules wrapping the cluster and in the gaps are considered to assemble on the surface of new particle as mixing nanolayer (MNL), the thermal conductivity in MNL is assumed to satisfy exponential distribution. Theoretical predictions for thermal conductivity enhancement are highly in agreement with the classical experimental data. Also, we first try to employ TEM information quantitatively to offer probable reference agglomeration ratio (not necessary a very precise value) to just test rational estimations range by present model. The comparison results indicate the satisfactory priori agglomeration ratio estimations range from renovated model.

Nano-scale particles (< 100 nm) exhibit promising application in science and technology due to their remarkable physicochemical properties; especially, given the fact that working fluids (such as water, ethylene glycol (EG), oil etc.) can perform typically higher thermal conductivity than base fluids when nanoparticles are suspended in them.

The original pioneering work concerning thermal conductivity and Brownian motion of particle suspensions was made by Maxwell and Einstein^{1,2}. The thermal conductivity enhancement of particles suspensions has been known widely according to classical Maxwell model as

$$k_{\text{Maxwell}} = \frac{k_p + 2k_f + 2(k_p - k_f)\phi}{k_p + 2k_f - (k_p - k_f)\phi} k_f \quad (1)$$

where k_p and k_f are thermal conductivity of particle and base fluid respectively and ϕ is the particle volume fraction (volume concentration).

In 1995, the concept of a nanofluid, i.e., nanoparticles suspensions, was proposed by Choi³ and the significant thermal conductivity enhancement of a stable nanofluid with very dilute concentration was reported at Argonne National Laboratory. Unfortunately, there is no unified framework in the existing theory to explain these special properties of nanofluids due to many uncertain factors. Several important papers^{4–6} on the thermal conductivity enhancement of nanofluid summarize the excellent experimental and theoretical achievements which enumerate different factors such as temperature, size and shape of nanoparticles, Brownian motion, volume fraction (concentration), adsorption layer at liquid-particle interface, the agglomeration and anomalous heat and mass diffusion etc. Some thermal conductivity models, concerning the factors listed above, show partial agreement with the experimental data. Kumar *et al.*⁷ (2004) modeled the heat conduction in nanofluids using a stationary and moving particle model including factors like particle size, concentration and temperature. An experimental correlation model for thermal conductivity of Al_2O_3 as the function of nanoparticle size and temperature was proposed by Chon *et al.*⁸

¹School of Mechanical Engineering, University of Science and Technology Beijing, Beijing 100083, China. ²School of Mathematics and Physics, University of Science and Technology Beijing, Beijing 100083, China. ³Guangdong Provincial Key Laboratory of Functional Soft Condensed Matter, Materials and Energy school at Guangdong University of Technology, Guangzhou 510006, China. ⁴Artie McFerrin Department of Chemical Engineering, Texas A&M University, College Station, Texas 77843, USA. ⁵Material Science and Engineering Program, Texas A&M University, College Station, Texas 77843, USA. Correspondence and requests for materials should be addressed to L.Z. (email: liancunzheng@ustb.edu.cn)

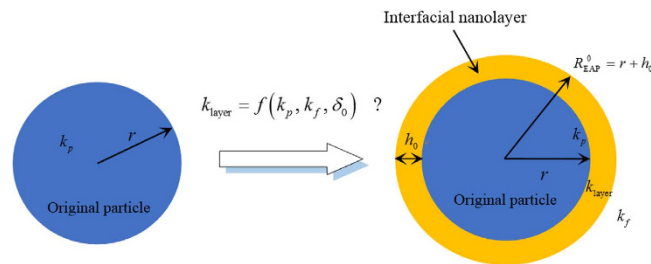


Figure 1. Schematic cross section of single nanoparticle with the interfacial ordered layer. This structure which is formed by liquid molecules surrounding the particle surface plays an important role in explaining heat conduction enhancement in nanofluids. The non-constant thermal conductivity within interfacial ordered layer is assumed as the function of k_p , k_f and δ , where $0 \leq \delta \leq \delta_0$.

Eapen *et al.*⁹ (2007) investigated the mean-field theory of Maxwell, the effects of interfacial thermal resistance, and the microscale convection on the thermal conductivity enhancement of nanofluids. In 2008, He and Qiao¹⁰ modeled the heat conduction in nanoparticles suspensions by using the energy-conserving dissipative particle dynamics (DPD) in which the effects of Brownian motion of nanoparticles on the transport properties of nanofluid were analyzed in their simulation results.

According to the literature, it is currently impossible to propose a theoretical model containing all factors relating to thermal conductivity enhancement of nanofluids simultaneously owing to the complex solid/liquid surface interactions (surface phenomenon). In this paper, we study the mechanism of heat conduction enhancement in nanofluid in which the effects of liquid-particle interfacial ordered layer (IOL) and nanoparticles aggregation on thermal conductivity enhancement are taken into account.

The schematic cross-section of the nanoparticle covered with an ordered nano-scale interfacial layer at solid-liquid interface is shown in Fig. 1. It is believed that interfacial effects are important in a variety of different physical systems. The formation of layered structures within interface zone between liquid molecules and solid surface were reported by Henderson & Swol¹¹ and this phenomenon was observed by Yu *et al.*¹² As the effective size of solid decreases, especially for nano-scale particles, the special surface area increases sharply to obtain higher surface energy of nanoparticle, namely the atoms on the surface are in overactive level to generate the complex physical and chemical reactions with the liquid molecules, i.e., interfacial effects. The surface interactions leading to high potential energy changed cooperatively within the layered structure¹³ should be considered as the significant role to alter the thermophysical properties of nanoparticles, even of the overall system (nanofluid). Anomalous thermal conduction enhancement in nanotube suspensions was reported by Choi *et al.* in which the innovative concepts for this anomalous phenomenon were suggested to go forward existing fundamental limits¹⁴.

In 1995, Schwartz *et al.* proposed the thermal conductivity of nanoparticles with an interfacial ordered layer, i.e., equivalent nanoparticles, utilizing the effective medium theory¹⁵ as:

$$k_{pe} = \frac{[2(1 - \gamma) + (1 + \delta_0)^3(1 + 2\gamma)]\gamma k_p}{(\gamma - 1) + (1 + \delta_0)^3(1 + 2\gamma)} \quad (2)$$

where $\gamma = \frac{k_{layer}}{k_p}$ is the ratio of thermal conductivity inside IOL to the thermal conductivity of particle and $\delta_0 = \frac{h_0}{r}$ is the ratio of IOL thickness h_0 to the radius r of original individual particle respectively. Yu and Choi¹⁶ modified the classical Maxwell thermal conductivity model by considering the influence of an IOL as:

$$k_e = \frac{k_{pe} + 2k_f + 2(k_{pe} - k_f)(1 + \delta_0)^3\phi}{k_{pe} + 2k_f - (k_{pe} - k_f)(1 + \delta_0)^3\phi} k_f \quad (3)$$

Eq. (3) implies the equivalent particle radius $r + h_0$, which results in an increasing volume fraction $\phi_e = \phi(1 + \delta_0)^3$ (hard sphere particles model).

Xue¹⁷ studied the effective thermal conductivity of a nanofluid by considering the effect of solid-liquid interface. The good agreement between theoretical results and some experimental data indicated important role of interfacial ordered layer on the enhancement of thermal conductivity in nanofluids. Nisha *et al.*¹⁸ showed that the crucial role of thin interfacial adsorption layers around nanoparticles affects the thermal conductivity variations and is limited by the hydrodynamic radius of nanoparticles. The thermal conductivity model proposed by Leong *et al.*¹⁹ documented that the volume fraction, thickness, thermal conductivity of the interfacial layer and particle size are the major mechanisms for enhanced thermal conductivity of nanofluids. However, the agreement reached by the model was not ideal for almost data. Xie *et al.*²⁰ proposed a theoretical model which includes considerations of the effects of an interfacial nanolayer formed by liquid molecule layering on the particle/liquid interface and of micro-convection caused by thermal motion of nanoparticles. The predicted results are in good agreement with some available experimental data.

As motioned earlier, the thermal conductivity in the interfacial ordered layer surrounding the nanoparticles is higher than base fluid due to the “assimilation effects” of the nanoparticles. The thermophysical properties in IOL are always a hot topic, however, it is still unclear understanding about the exact thermal conductivity¹⁹ in such an

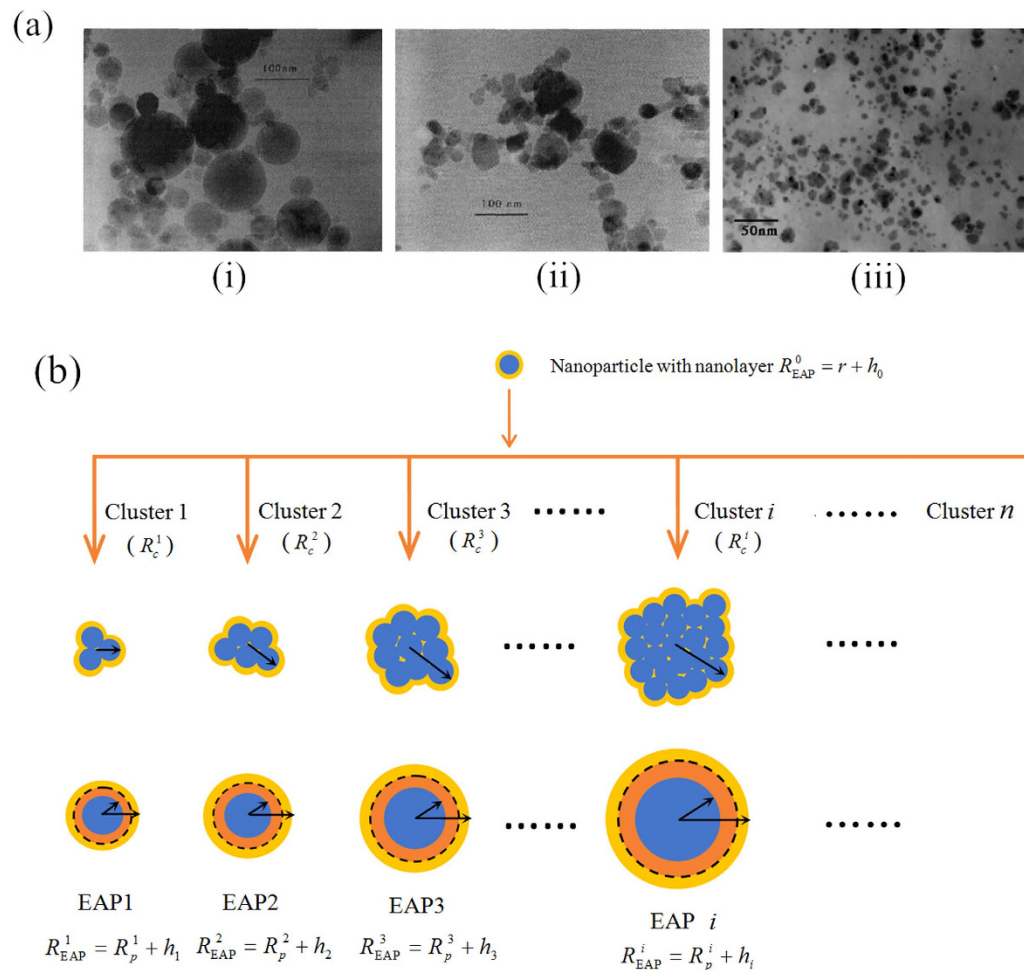


Figure 2. TEM of nanofluids and the schematic cross section of model. (a) The TEM of nanofluids. (i) is the TEM for Al_2O_3 /water²⁵, we estimate agglomeration ratio $\lambda \approx 18.6\%$; (ii) is CuO /water²⁵, we estimate the agglomeration ratio $\lambda \approx 15.6\%$; (iii) is Cu /ethylene glycol³⁹ without agglomeration. (b) The schematic cross section of multilevel equivalent agglomeration model.

interfacial ordered layer (IOL). Liang and Tsai²¹ suggested that the thermal conductivity of a 1-nm-thick IOL is 1.6~2.5 times higher than that of the base fluid by using non-equilibrium molecular dynamic simulations. Nevertheless, there is no experimental data supporting the thermal properties of the interfacial liquid layers. Based on the concept that $k_p \geq k_{layer} \geq k_f$, the thermal conductivity of nanolayer was proposed as^{22,23}

$$k_{layer}(r) = \frac{k_f - k_p}{h} r + \frac{k_p(r_p + h) - k_f r_p}{h} \quad (4)$$

where r is the variable in $r_p \leq r \leq r_p + h$, r_p is the radius of particle and h is the thickness of IOL. However, Eq. (4) fails to describe the consecutive variation of k_{layer} from k_p to k_f as h changing from 0 (extra thin) to h_0 , because k_{layer} will approach an infinite value when IOL tends to extremely thin $h \rightarrow 0$ (r is a bounded value^{22,23}), which leads to a singularity in mathematics and thus is unacceptable in physics. Additionally, Sohrabi *et al.*²⁴ employed the power exponent expression of thermal conductivity in IOL to present the heat conduction model of nanofluid and the predictions were good in general, although a few imprecise results.

The above mentioned investigations ignored the effects of nanoparticles aggregation. Figure 2(a) presented transmission electron micrographs (TEM) by Lee and Choi²⁵, which show the morphologies of agglomerated Al_2O_3 and CuO powders. It can be seen that both Al_2O_3 and CuO nanoparticles agglomerate to form big particles than individual grains before dispersion.

It is the short-range interparticle attraction that cause the irreversible aggregation behaviour and the 3D simulations for gelation of particles based on diffusion-limited cluster aggregation (DLCA) were studied by David *et al.*²⁶ The aggregation processes of nanoparticles as a typical phenomenon in nanofluid are generated by many factors, for instance Brownian force, London-Van der Waals force²⁷, especially for the high energy surface caused by overactive atoms distributed on the surface of per nanoparticle intensively. Generally, the strengthening aggregation with the decrease of nanoparticle diameter because of the more unstable interfacial for smaller particles,

then a big and stable cluster will be produced via interparticles attraction. As well known, the aggregation processes is time-dependent phenomenon and some artificial approaches, such as pH value adjustment, temperature control and the initial volume fraction restriction, even surface charge modification etc.²⁸ are utilized to affect the formation of aggregates. So far, numbers of scholars investigated the thermal conductivity of nanofluid with taking aggregation into account. Feng *et al.*²⁹ proposed an effective thermal conductivity model by considering the nanolayer and nanoparticles' aggregation, assembled in well-ordered structure. This regular assembly model has advantages than earlier models. However, there exist still deviations in comparison with experimental data since the model was unable to approximate the real complex agglomeration structure. Srivastava³⁰ presented an analogous agglomeration structure in which the clusters were divided into two types consisting of particles with and without IOL. Moreover, Lee *et al.*²⁵ and Xie *et al.*³¹ presented experimental measurements of thermal conductivities by using transient hot-wire method for a dilute concentration nanofluid, which involved agglomerated nanoparticles and the different size of individual grains. Mintsas *et al.*³² also provided the thermal conductivity measurements for different size of alumina/water and copper oxide/water nanofluids. The data can be used to compare other thermal conductivity measurements obtained using different approaches and the testing of other theoretical models^{24,29,30,33,34}.

Problem Formulation

In this paper we assume an equilibrium status of agglomeration, i.e., the aggregation process has completed and no new clusters form. The TEM observations in Fig. 2(a) (i)-(ii) and (iii) illustrated that there is the coexistence of clusters with different agglomerate sizes, i.e., the multilevel agglomeration mechanism. The random arrangement of multi-sized agglomerates in nanofluids play an important role in affecting the heat conduction enhancement in nanofluids.

Figure 2(b) shows that each cluster is composed of two parts, i.e., the pure solid phase particles material and the liquid phase constrained in an irregular porous. Here, we perform a new alternative approach to solve the above problems. The main idea is: For cluster *i* an instance, the total particles contained in cluster *i* are treated as a new big particle (solid phase) with the same volume, the liquid phase (including the liquid molecules surrounding the cluster *i* and the liquid in the gaps) are considered to assemble on the interface of the new big particle to form a mixing interfacial ordered layer called the mixing nanolayer (MNL), which is adaptable to interfacial ordered layer theory. The new big solid particle with the MNL is renamed as equivalent agglomeration particle *i* (EAP *i*), which promises the unaltered effects in heat conduction comparing to the original cluster *i*.

As compared to IOL, the MNL may be imagined as two layers. Taking the EAP *i* for example in Fig. 2(b), the first layer (colored dark orange within the dashed circle) may be imagined as being formed by the liquid in gaps of cluster *i*; the second ordered layer (colored bright orange) may be imagined as being formed by an original interfacial ordered layer of cluster *i*. The MNL thickness of EPA *i* can be written as $h_i = h_g^i + h_m^i$ ($i = 1, 2, 3, \dots$), where h_g^i and h_m^i are the thickness of the first layer (liquid in the gaps) and the second layer (liquid molecules) respectively. We think that the MNL of EPA should be thicker than the IOL of a single particle due to the contribution of liquid in the gaps, which depends on the structure of the original clusters. The increasing of the size of the cluster will result in more gaps in the cluster, which signifies the more liquid phase being contained in the MNL.

As for the thermal conductivity in MNL, there are two key factors that should be kept in mind: (i) it is a non-linear function of δ ; (ii) it decreases from k_p to k_f as δ changing from 0 to δ_i because the layered molecules are in an intermediate physical state between a bulk liquid and solid²². Based on this concept, the thermal transport characteristic in boundary layer problems³⁵ can be introduced to model k_{layer} analogically, so we assume an exponential distribution expression as

$$k_{\text{layer}}(\delta) = k_p e^{-a_i \delta} \quad (5)$$

where $0 \leq \delta \leq \delta_i$ and the parameter $a_i = \ln(k_p/k_f)/\delta_i$ which depends on the ratio $\delta_i = h_i/R_p^i$, R_p^i is the radius of new big solid particle *i*. Eq. (5) overcomes the defects in Eq. (4) $\delta \rightarrow 0$ earlier than $\delta_0 \rightarrow 0$, so $k_{\text{layer}} = k_p$ when $\delta_0 = 0$. The case $i = 0$ is for single particle, i.e., $R_p^0 = r$, Eq. (5) can also be used in IOL.

We establish the quantitative criteria for multilevel agglomeration framework. Defining N_a and N as the total numbers of multi-sized clusters in nanofluid and the total number of particles (monodispersed particles and agglomerates) respectively; thus, the number of monodispersed particles is $N - N_a$. Due to multilevel agglomeration, we assume that N_a^i is the number of the agglomerates in *i*th level and $N_a = \sum_{i=1}^n N_a^i$. For agglomerates in *i*th level, the agglomeration ratio is $\lambda_i = \frac{N_a^i}{N}$, then the total agglomeration ratio is $\lambda = \sum_{i=1}^n \lambda_i$. Additionally, defining m_i as the average number of individual particles contained in the cluster *i* and utilizing the constant-volume principle, then the radius of the new big solid particle *i* is $R_p^i = \sqrt[3]{m_i} r$. Apparently, R_p^i is smaller than the radius R_c^i of original cluster *i* due to existing gaps and R_c^i can be estimated by TEM. Moreover, we can determine the equivalent volume fraction of *i*th level agglomerate particles as $\phi_e = \lambda_i(1 + \delta_i)^3 \phi$ with $\delta_i = h_i/R_p^i$ ($i = 1, 2, 3, \dots$).

The new equivalent particle can be used in thermal conductivity calculation. Noting that the volume fraction ϕ (volume concentration) of nanoparticles plays an important role to affect multilevel agglomeration structure. It is known that, for simple agglomeration, the clusters are almost in average size and there exists few of original particles in every cluster with the low volume fraction (dilute suspensions). The bigger volume fraction (concentrated suspensions) is, the more complex agglomerate structure will be, in which the clusters are in nonuniform size and m_i is large relatively. Based on the analysis aforementioned, we modify Eqs (2) and (3) respectively as

$$k_{pe}^i = \frac{[2(1 - \bar{\tau}) + (1 + \delta_i)^3(1 + 2\bar{\tau})]\bar{\tau}k_p}{(\bar{\tau} - 1) + (1 + \delta_i)^3(1 + 2\bar{\tau})} \quad (6)$$

	Range	λ	δ_0	δ_1	$h_0(\text{nm})$	$h_1(\text{nm})$
$Al_2O_3/\text{water}^{25}$ ($r = 19.2 \text{ nm}$) with cluster estimate size $R_c^1 \approx 70 \text{ nm}$.	Upper	26%	0.08	0.11	1.50	7.70
	Optimal	19%	0.05	0.10	0.96	7.00
	Lower	11%	0.00	0.09	0.00	6.30
$Al_2O_3/\text{water}^{32}$ ($r = 23.5 \text{ nm}$)	Optimal	20%	0.05	0.15	1.18	—

Table 1. Characteristic parameters and the thickness of IOL and MNL for experimental data.

$$k_m^i = \frac{k_{pe}^i + 2k_f + 2(k_{pe}^i - k_f)\phi_e^i}{k_{pe}^i + 2k_f - (k_{pe}^i - k_f)\phi_e^i} k_f \quad (7)$$

Eqs (6) and (7) can be used for the nanoparticles with or without agglomeration involved in suspensions (nanofluids). The case $i = 0$ corresponds to the case of well-dispersed (no agglomeration) with $\lambda = 0$, $k_{pe}^0 = k_{pe}$, $R_p^0 = r(m_0 = 1)$, $\phi_e^0 = (1 - \lambda)\phi_e = (1 - \lambda)(1 + \delta_0)^3\phi$, and $i = 1, 2, 3, \dots$ represents the multilevel agglomeration. Hence, the novel effective thermal conductivity of nanofluids with multilevel agglomeration is written as

$$k_{nf} = (1 - \sum_{i=1}^n \lambda_i) k_m^0 + \sum_{i=1}^n \lambda_i k_m^i \quad (8)$$

Choosing the integral average of Eq. (5), as $\bar{k}_{\text{layer}} = \frac{1}{\delta_i} \int_0^{\delta_i} k_p e^{-a_i \delta} d\delta$ for simplicity, yields $\bar{k}_{\text{layer}} = \frac{k_p}{\ln(k_p/k_f)} (1 - k_f/k_p)$ and $\bar{\tau} = \bar{k}_{\text{layer}}/k_p$.

According to the published experimental measuring data^{25,31,32}, the agglomerate formation is in simple structure for dilute suspensions ($\phi < 6 \text{ vol.}\%$). For simplicity, we consider one level agglomeration, i.e., $n = 1$, in MEA, Eq. (8) becomes

$$k_{nf} = (1 - \lambda) k_m^0 + \lambda k_m^1 \quad (9)$$

The adjustable parameters involved in Eq. (8), i.e., the agglomeration ratio λ , the ratio parameters δ_i ($i = 0, 1$), $i = 0$ for individual nanoparticles and $i = 1$ for equivalent agglomerates particles (EAP), are key factors to predict thermal conductivity enhancement theoretically. We assume that there is no obvious difference in λ within the range of dilute suspensions ($\phi < 6 \text{ vol.}\%$). Due to R_p^1 is unknown, for one level agglomeration computation, we can obtain the upper and lower bounds of thickness of MNL h_1 by using R_c^1 in δ_1 to replace R_p^1 .

As for a Newtonian base fluid (deionized water and ethylene glycol), both the IOL and MNL are in small magnitude, i.e., the ratios δ_0 and δ_1 are small. This accords with some previous experimental observations and theoretical research^{17,21}.

Results and Discussion

Table 1 illustrates the characteristics of parameters λ , δ_0 , δ_1 , h_0 and h_1 obtained by our model according to Lee²⁵ and Mintsa³², the agglomeration ratio λ is estimated between lower 11% and upper 26% for nanofluid Al_2O_3/water ($r = 19.2 \text{ nm}$), and the suggested agglomeration ratio $\lambda = 20\%$ for nanofluid Al_2O_3/water ($r = 23.5 \text{ nm}$). Figure 3(a) show the analytical predictions of our model on the experimental data of Al_2O_3/water nanofluid made by Lee *et al.*²⁵, the results show perfect agreements. The further computation indicates an optimal prediction matching the experimental data precisely in above established range.

An interesting discovery is that the optimal agglomeration ratio obtained in present paper is very close to the one estimated by TEM in Fig. 2(a-i) for $Al_2O_3/\text{water}^{25}$, which is an essential means to determine the characteristics of particles suspending in nanofluids intuitively and briefly, where the total grains number is about $N \approx 43$ and the number of big particles is about $N_a \approx 8$ which are classified as agglomerates (clusters), the average agglomeration ratio is $\lambda_{\text{TEM}} \approx 18.6\%$ and average equivalent radius of agglomerates is about $R_c^1 \approx 70 \text{ nm}$ based scale bar, which supports our analytical prediction very well.

Technically, TEM observation usually requires a vacuum condition, i.e., the only nanoparticles will be deposited rather than in nanofluid, which results in reaggregation due to an external force probably. Nevertheless, we believe that TEM is one of most effective approach to observe the aggregates structure by now and the aggregates information differences between TEM showing and original nanofluid are also not too big, while are not accurate strictly. All the predictions obtained by us starts with the probable priori estimation of agglomeration ratio rather than an accurate value absolutely which hasn't promised to be extracted out by now, meanwhile the final results, i.e., thermal conductivity & IOL thickness, are validated by previous data and observations respectively. Hence a probable reference range from TEM is also meaningful to confirm present model, which is much better than nothing cited priori at all. The TEM information is first cited quantitatively like that by us, which has never been reported before.

We can also compute the optimal effective thickness of IOL for single particle (well-dispersed) $h_0 \approx 0.96 \text{ nm}$ and that for EAP $h_1 \approx 7.00 \text{ nm}$ respectively by $\lambda = 19\%$. The thickness of IOL in this paper is very close to the typical solid-like interfacial layer thickness $\approx 1 \text{ nm}$ by Xue *et al.*³⁶ using molecular dynamic simulations and the

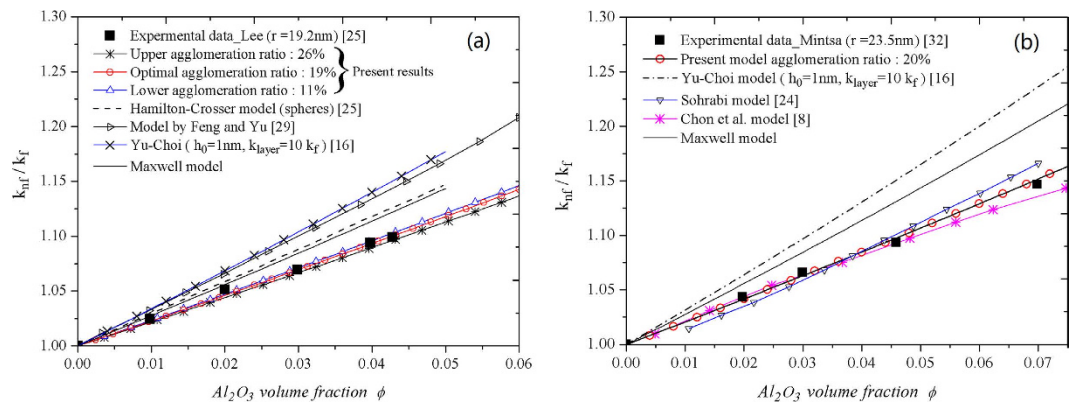


Figure 3. Enhanced thermal conductivity as a function of nanoparticle volume fraction. (a) Comparison of the theoretical predictions and experimental data for Al_2O_3 /water ($r = 19.2$ nm) in Lee *et al.*²⁵. (b) Comparison of the theoretical predictions with the experimental data for Al_2O_3 /water ($r = 23.5$ nm) in Mintsas *et al.*³².

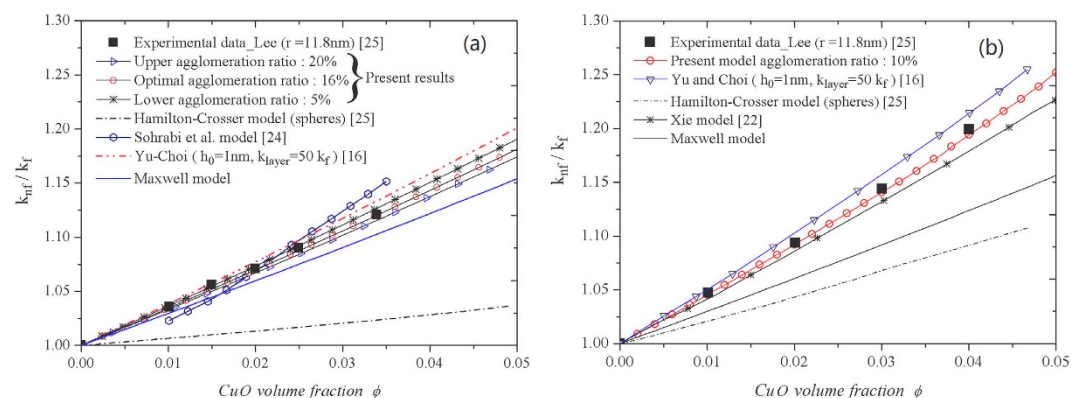


Figure 4. Enhanced thermal conductivity as a function of nanoparticle volume fraction. (a) Comparison of the theoretical predictions and experimental data for CuO /water ($r = 11.8$ nm) in Lee *et al.*²⁵. (b) Comparison of the theoretical predictions with the experimental data for CuO /ethylene glycol ($r = 11.8$ nm) in Lee *et al.*²⁵.

experimental observation by Yu *et al.*¹². And also Gerardi *et al.* rendered in 2009 the thickness about 1.4 nm experimentally via the nuclear magnetic resonance³⁷.

The contribution of extra liquid in gaps $h_{gap}^1 = h_1 - h_0 \approx 6.04$ nm. If we consider the mechanism of sphere particles closest packing³⁸ (the porosity is 25.95%) and cubic lattice loosest packing (the porosity is 47.64%) pattern to form clusters, the corresponding lower thickness of liquid in gaps $h_{lower\ gap}^1 = 5.60$ nm and upper thickness $h_{upper\ gap}^1 = 9.70$ nm which demonstrates that MNL thickness is advisable. In visually, other models present some deviations with the data, especially, the difference between Yu-Choi model and present model may be caused mainly by the considering agglomeration effects and different thermal conductivity in IOL with the same h_0 . In Fig. 3(b), we show directly the most possible prediction for data in which the optimal result by present model can be seen compared with others. The only optimal estimation thickness of IOL $h_0 = 1.18$ nm with $\lambda = 20\%$ is suggested without other auxiliary evidences for this experimental data³². A slightly thicker of IOL for bigger nanoparticle with comparison the both optimal values for different data^{25,32} in Table 1.

As for CuO /water in Fig. 4(a), the overall priori estimation range of agglomeration ratio is presented in Table 2. The optimal agglomeration ratio $\lambda = 16\%$ is very close to the accurate evaluated value of $\lambda_{TEM} \approx 15.6\%$ by TEM in Fig. 2(a)-(ii). The average equivalent radius of these clusters is about $R_c^1 \approx 45$ nm based on the scale bar. We obtain the optimal thickness of IOL as $h_0 \approx 2.00$ nm and MNL as $h_1 \approx 6.75$ nm with $h_{gap}^1 \approx 4.75$ nm, it is contained in the range of the sphere particles closest packing $h_{lower\ gap}^1 = 3.60$ nm and cubic lattice loosest packing $h_{upper\ gap}^1 = 6.24$ nm.

The predictions for CuO /ethylene glycol ($r = 11.8$ nm) are illustrated in Fig. 4(b). The IOL thickness of CuO particle in ethylene glycol is thicker than that in water obviously according to our results (both for optimal case) in Table 2, which can indicate the more enhanced thermal conductivity in ethylene glycol. On the other hand, present agglomeration estimation for CuO particle in ethylene glycol is less than that in water. It might be one of the reasons that the viscosity of ethylene glycol (25.66 mPa·s at 16 °C) is larger than water (1.11 mPa·s at 16 °C), which strengthen the steric hindrance among nanoparticles in ethylene glycol, namely the interparticles agglomerate effects are reduced.

	Range	λ	δ_0	δ_1	$h_0(\text{nm})$	$h_1(\text{nm})$
<i>CuO</i> /water ²⁵ ($r = 11.8 \text{ nm}$) with cluster estimate size $R_c^1 \approx 45 \text{ nm}$.	Upper	20%	0.19	0.16	2.24	7.20
	Optimal	16%	0.17	0.15	2.00	6.75
	Lower	5%	0.11	0.13	1.30	5.85
<i>CuO</i> /ethylene glycol ²⁵ ($r = 11.8 \text{ nm}$)	Optimal	10%	0.23	0.20	2.71	—

Table 2. Characteristic parameters and the thickness of IOL and MNL for experimental data.

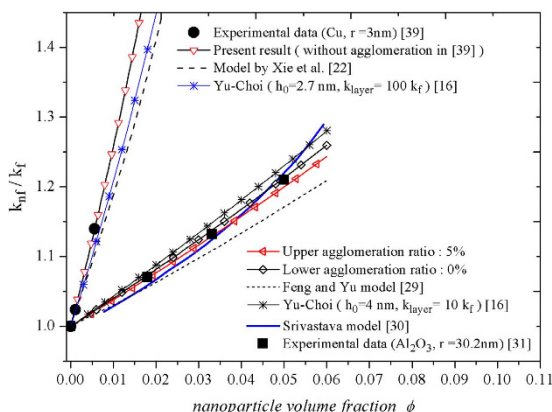


Figure 5. The present model predicts the experimental data accurately with few deviation. The data (solid circles) are for *Cu*/ethylene glycol ($r = 3 \text{ nm}$) with very dilute concentration $< 1 \text{ vol.}\%$ in Eastman *et al.*³⁹. The data (solid squares) are for Al_2O_3 /water ($r = 30.2 \text{ nm}$) in Xie *et al.*³¹.

	Range	λ	δ_0	δ_1	$h_0(\text{nm})$	$h_1(\text{nm})$
<i>Cu</i> /ethylene glycol ³⁹ (small size $r = 3 \text{ nm}$) with very little agglomeration.	Optimal	0%	0.90	—	2.70	—
Al_2O_3 /water ³¹ (large size $r = 30.2 \text{ nm}$) without cluster size estimate.	Upper	5%	0.14	0.15	4.23	—
	Lower	0%	0.12	—	3.62	—

Table 3. Characteristic parameters and the thickness of IOL for experimental data.

The advantage of present models us to know the thermal physical information of unfamiliar suspensions samples, even if there is no TEM or other auxiliary measures. The highly consistent predictions for *Cu*/ethylene glycol³⁹ ($r = 3 \text{ nm}$) are depicted in Fig. 5. The author Eastman had claimed that the prepared nanofluid using their processing method has very little agglomeration in Fig. 2(a-iii), which is helpful for us to establish the parameters in Table 3. The results indicate importantly that the ratio $\delta_i = h_i/R_c^i$ ($i = 0, 1, 2, 3, \dots$), including the particles with or without agglomeration, will become to be relatively large if R_c^i is small enough (advanced nano-powder manufacturing process). It is a new discovery never be reported with the comparisons for traditional theories.

The data for Al_2O_3 /water with big size $r = 30.2 \text{ nm}$ provided by Xie *et al.*³¹ is used to test availability of present model, which demonstrates the precise agreements with data than that of Feng *et al.*²⁹ in Fig. 5. Present model predicts overall priori estimation range for agglomeration ratio $0\% \leq \lambda \leq 5\%$ nm and corresponding IOL thickness range $3.8 \text{ nm} \leq h_0 \leq 4.2 \text{ nm}$ respectively in Table 3 and as the inference, $h_0 \approx 4 \text{ nm}$ is the optimal IOL thickness we can confirm. The reason in the absence of the optimal predictions is that there are no auxiliary measures, such as TEM, even we have no ideal about the experimental information of clusters.

The computational results aforementioned show us that the thickness of IOL and MNL are changeable, which depend on the nanoparticle types and size, and base fluid etc. as compared those four sets experimental data. The ordered layers consist of the interfacial base fluid molecules (atoms) wrapping the particles seem to be the dynamic layers, which may be due to the cooperatively changed potential energy on the fluid-particle interface¹³.

Conclusions

A novel theoretical model for predicting heat conduction enhancement in nanofluids has been developed. The proposed model can not only be used to predict the thermal conductivity accurately but can also be used to provide the estimation of the agglomeration ratio and thickness of IOL and MNL. The optimal computational agglomeration ratio obtained in this paper is very close to the actual estimated value by TEM. The successful predictions are attributed to the integration of interfacial order layer theory and the special clusters assembly scheme. The present results also indicate explicitly the changeable thickness of IOL and MNL, which are highly susceptible by nanoparticle types and size, base fluid and interaction between them. The estimations including agglomeration ratio and thickness of IOL and MNL from us are promised in the reasonable range by comparing experimental data, while the quite precise experimental observations especially for IOL thickness haven't reach the substantive verdicts. There is more expanded research space about the field in this paper to reveal the characteristics of interfacial order layer of nanoparticles.

References

- Maxwell, J. C. A *Treatise on Electricity and Magnetism* (Dover, New York), 3rd ed., Vol. 1, p. 435 (1954).
- Einstan, A. A. On the movement of small particles suspended in stationary liquids required by the molecular-kinetic theory of heat. *Phys. (Leipzig)* **17**, 549 (1905).
- Choi, S. U. S. *Development and application of non-Newtonian flows*. ASME New York (San Francisco) (1995).
- Rashmi, W., Khalid, M., Ong & Saidur, R. Preparation, thermo-physical properties and heat transfer enhancement of nanofluids. *Mater. Res. Express* **1**, 032001 (2014).
- Wang, X. Q. & Mujumdar, A. S. Heat transfer characteristics of nanofluids: a review. *Int. J. Therm. Sci.* **46**, 1 (2007).
- Clement, K. & Yu, F. Experimental and theoretical studies of nanofluid thermal conductivity enhancement: a review. *Nanoscale Res. Lett.* **6**, 229 (2011).
- Hemanth, K. D. *et al.* Model for Heat Conduction in Nanofluids. *Phys. Rev. Lett.* **93**, 144301 (2004).
- Chan, H. C., Kenneth, D. K., Shin, P. L. & Stephen, U. S. Choi Empirical correlation finding the role of temperature and particle size for nanofluid (Al_2O_3) thermal conductivity enhancement. *Appl. Phys. Lett.* **87**, 153107 (2005).
- Jacob, E. *et al.* Mean-Field Versus Microconvection Effects in Nanofluid Thermal Conduction. *Phys. Rev. Lett.* **99**, 095901 (2007).
- He, P. & Qiao, R. Self-consistent fluctuating hydrodynamics simulations of thermal transport in nanoparticle suspensions. *J. Appl. Phys.* **103**, 094305 (2008).
- Henderson, J. R. & van Swol, F. On the interface between a fluid and a planar wall Theory and simulations of a hard sphere fluid at a hard wall. *Molecular Physics* **51**, 991–1010 (1984).
- Yu, C.-J. *et al.* Molecular layering in a liquid on a solid substrate: an X-ray reflectivity study. *Physica B* **283**, 27–31 (2000).
- Jacob Eapen, L. J. & Yip, S. D. Mechanism of Thermal Transport in Dilute Nanocolloids. *Phys. Rev. Lett.* **98**, 028302 (2007).
- Choi, S. U. S., Zhang, Z. G., Yu, W. *et al.* Anomalous thermal conductivity enhancement in nanotube suspensions. *Appl. Phys. Lett.* **79**, 2252 (2001).
- Schwartz, L. M., Garboczi, E. J. & Bentz, D. P. Interfacial transport in porous media: Application to dc electrical conductivity of mortars. *J. Appl. Phys.* **78**, 5898–5908 (1995).
- Yu, W. & Choi, S. U. S. The role of interfacial layers in the enhanced thermal conductivity of nanofluids: A renovated Maxwell model. *J. Nanopart. Res.* **5**, 167–171 (2003).
- Xue, Q. Z. Model for effective thermal conductivity of nanofluids. *Phys. Lett. A.* **307**, 313–317 (2003).
- Nisha, M. R. & Philip, J. Thermal conduction in polymeric nanofluids under mean field approximation: role of interfacial adsorption layers. *Phys. Scr.* **88**, 015602 (2013).
- Leong, K. C., Yang, C. & Murshed, S. M. S. A model for the thermal conductivity of nanofluids – the effect of interfacial layer. *J. Nanopart. Res.* **8**, 245–254 (2006).
- Ren, Y. J., Xie, H. Q. & Cai, A. Effective thermal conductivity of nanofluids containing spherical nanoparticles. *J. Phys. D: Appl. Phys.* **38**, 3958–3961 (2005).
- Zhi, L. & Hai-Lung, T. Thermal conductivity of interfacial layers in nanofluids. *Phys. Rev. E* **83**, 041602 (2011).
- Huaqing, X., Motoo, F. & Xing, Z. Effect of interfacial nanolayer on the effective thermal conductivity of nanoparticle–fluid mixture. *Int. J. Heat Mass Transfer* **48**, 2926–2932 (2005).
- Tso, C. Y., Fu, S. C. & Chao Christopher, Y. H. A semi-analytical model for the thermal conductivity of nanofluids and determination of the nanolayer thickness. *Int. J. Heat Mass Transfer* **70**, 202–214 (2014).
- Sohrabi, N., Masoumi, N., Behzadmehr, A. & Sarvari, S. M. H. A Simple Analytical Model for Calculating the Effective Thermal Conductivity of Nanofluids. *Heat Transfer-Asian Research* **39**, 141–150 (2010).
- Lee, S., Choi, S. U. S., Li, S. & Eastman, J. A. Measuring Thermal Conductivity of Fluids Containing Oxide Nanoparticles. *J. Heat Transfer* **121**, 280–289 (1999).
- Lu, P. J., Weitz, D. A., Ciulla, F. *et al.* Gelation of particles with short-range attraction. *Nature* **22**, 499–504 (2008).
- Yimin, X., Qiang, L. & Weifeng, H. Aggregation Structure and Thermal Conductivity of Nanofluids. *AIChE J.* **49**, 1038–1043 (2003).
- Ravi, P. Effect of Aggregation Kinetics on the Thermal Conductivity of Nanoscale Colloidal Solutions (Nanofluid). *Nano Letters* **6**, 1529–1534 (2006).
- Yongjin, F., Boming, Y., Peng, X. & Mingqing, Z. The effective thermal conductivity of nanofluids based on the nanolayer and the aggregation of nanoparticles. *J. Phys. D: Appl. Phys.* **40**, 3164–3171 (2007).
- Gaganpreet & Sunita, S. Effect of aggregation on thermal conductivity and viscosity of nanofluids. *Appl. Nanosci.* **2**, 325–331 (2012).
- Huaqing, X. *et al.* Thermal conductivity enhancement of suspensions containing nanosized alumina particles. *J. Appl. Phys.* **91**, 4568–4572 (2002).
- Mintsa, H. A., Roy, G. *et al.* New temperature dependent thermal conductivity data for water-based nanofluids. *Int. J. Thermal Sci.* **48**, 363–371 (2009).
- Elena, V. T. *et al.* Thermal conductivity and particle agglomeration in alumina nanofluids: Experiment and theory. *Phys. Rev. E* **76**, 061203 (2007).
- Marin, E. *et al.* An explanation for anomalous thermal conductivity behaviour in nanofluids as measured using the hot-wire technique. *J. Phys. D: Appl. Phys.* **47**, 085501 (2014).
- Jize, S., Liancun, Z. & Xinxin, Z. Convection Heat Transfer of Power-Law Fluids Along the Inclined Nonuniformly Heated Plate With Suction or Injection. *J. Heat Transfer* **138**, 021701 (2016).
- Xue, L. *et al.* Effect of liquid layering at the liquid–solid interface on thermal transport. *Int. J. Heat Mass Transfer* **47**, 4277–4284 (2004).
- Gerardi, C., Cory, D., Buongiorno, J., Hu, L. & Mckrell, T. Nuclear magnetic resonance-based study of ordered layering on the surface of alumina nanoparticles in water. *Appl. Phys. Lett.* **95**, 253104 (2009).
- Sigrist, F. Sphere Packing. *Math. Intell.* **5**, 34–38 (1983).
- Eastman, J. A., Choi, S. U. S., Li, S., Yu, W. & Thompson, L. J. Anomalous increased effective thermal conductivities of ethylene glycol-based nanofluids containing copper nanoparticles. *Appl. Phys. Lett.* **78**, 718–720 (2001).

Acknowledgements

The authors acknowledge the financial support from National Natural Science Foundations of China Nos. 51276014 and 51476191.

Author Contributions

J.S. and L.Z. wrote the main manuscript text. X.Z., Y.C. and Z.C. all made discussion and revision for the manuscript.

Additional Information

Competing financial interests: The authors declare no competing financial interests.

How to cite this article: Sui, J. *et al.* A Novel Equivalent Agglomeration Model for Heat Conduction Enhancement in Nanofluids. *Sci. Rep.* **6**, 19560; doi: 10.1038/srep19560 (2016).



This work is licensed under a Creative Commons Attribution 4.0 International License. The images or other third party material in this article are included in the article's Creative Commons license, unless indicated otherwise in the credit line; if the material is not included under the Creative Commons license, users will need to obtain permission from the license holder to reproduce the material. To view a copy of this license, visit <http://creativecommons.org/licenses/by/4.0/>