

SCIENTIFIC REPORTS



OPEN

Interfacial valence electron localization and the corrosion resistance of Al-SiC nanocomposite

Sareh Mosleh-Shirazi^{1,2}, Guomin Hua¹, Farshad Akhlaghi², Xianguo Yan³ & Dongyang Li^{1,3}

Received: 22 September 2015

Accepted: 13 November 2015

Published: 15 December 2015

Microstructural inhomogeneity generally deteriorates the corrosion resistance of materials due to the galvanic effect and interfacial issues. However, the situation may change for nanostructured materials. This article reports our studies on the corrosion behavior of SiC nanoparticle-reinforced Al6061 matrix composite. It was observed that the corrosion resistance of Al6061 increased when SiC nanoparticles were added. Overall electron work function (EWF) of the Al-SiC nanocomposite increased, along with an increase in the corrosion potential. The electron localization function of the Al-SiC nanocomposite was calculated and the results revealed that valence electrons were localized in the region of SiC-Al interface, resulting in an increase in the overall work function and thus building a higher barrier to hinder electrons in the nano-composite to participate in corrosion reactions.

Microstructural inhomogeneity generally deteriorates the corrosion resistance of materials due to the galvanic effect and interfacial issues. The difference in electrochemical behavior between different phases may accelerate corrosion reactions, leading to higher susceptibility to electrochemical attacks. For metal-matrix composites in which the reinforcing phases are usually non-conductive ceramic materials, the interfacial properties become crucial.

The interface between the matrix and reinforcement plays an important role in property control for composites¹. As an example, Al-matrix composites (AMCs), possessing high strength-to-weight ratio, high thermal and electrical conductivities, are important materials for automotive, aerospace and civil applications². However, one of main obstacles that limit the application of AMCs is related to the interface in AMCs, which often serve as a source for corrosion. The interface between the Al matrix and inclusions provides sites for corrosion to occur preferentially^{3,4}. Pitting attack is often reported as a major form of corrosion in Al-SiC composites^{5,6}. From the point of view that the corrosion is dominated by electron activation behaviour besides passive or transpassive properties⁷, electronic properties of interfaces such as polarizability and localization, which are related to the activity of valence electrons, are requisite to understand the corrosion behaviour of AMCs. In recent years, considerable attention has been paid to nanocomposites, in which the reinforcements are nano-sized, due to their superior mechanical properties^{8–10}. For nano-composites in which the fraction of interfaces is increased by orders of magnitude with significantly reduced spacing between reinforcements, the activity of valence electrons in the system could be markedly affected. This is an issue worth being looked into in order to optimize the nano-composites.

In general, the chemical reactivity of materials could be evaluated by their polarizability, which is a property for measuring how the material responds to the external field¹¹. Although the accurate polarizability is difficult to be calculated due to excited states are involved^{12,13}, the polarizability is essentially determined by the valence electron density^{14,15}. Moreover, the polarizability exhibits correlation with other optical and mechanical properties which are strongly affected by valence electron density¹⁶. In view of these evidences, a question is then arisen whether or not other parameters determined by valence electron density can serve with the capability similar to that of polarizability for studying chemical reactivity of materials.

Electron work function (EWF), as an important physical property to evaluate the driving force for the electron flow, has been widely applied in microelectronics¹⁷, field emission¹⁸, catalysis¹⁹ and solar cell²⁰ etc. In our early studies, it has been demonstrated that EWF is determined by the valence electron density according to the image charge method²¹. Therefore, efforts were made to explore application of EWF on the chemical reactivity characterization. In this study, how the EWF and the corrosion resistance of Al-SiC nanocomposite changed with the

¹Department of Chemical and Materials Engineering, University of Alberta, Edmonton, T6G 2V4, Alberta, Canada.

²School of Metallurgy and Materials Engineering, University College of Engineering, University of Tehran, Tehran, 14174, Iran. ³School of Mechanical Engineering, Taiyuan University of Science and Technology, Taiyuan, 030024, Shanxi, People's Republic of China. Correspondence and requests for materials should be addressed to D.L. (email: dongyang.li@ualberta.ca)

Mg	Si	Fe	Cu	Cr	Al
1.12	0.64	0.48	0.33	0.04	Balance

Table 1. Chemical composition (wt %) of 6061 Aluminum alloy

interfacial electron state were investigated. The matrix is Al6061 and is termed here as Al matrix for simplicity. Along with the electron localization function (ELF) determined by first-principle calculation, the electronic origin responsible for the interfacial enhancement on the corrosion resistance of the material become understandable.

Experiment and Calculation Details

Materials and characterizations. SiC nanoparticles (25–50 nm, Plasma-Chem Co. Germany) were co-milled with nitrogen gas atomized Al-6061 powder (38–63 μm) in a laboratory planetary ball mill (PM-2400). The mixed powers contained 1, 2 and 3 vol% SiC nanoparticles, respectively. The nominal chemical composition of Al6061 is given in Table 1. The milling process proceeded in argon for 20 h and hardened stainless steel balls of 10 mm in diameter were used. The ball to powder weight ratio and rotational speed were 15:1 and 300 rpm, respectively, and 1.5 wt% of stearic acid (S.A.) was used as the Process Control Agent (PCA). The powder mixtures were then cold pressed in a steel die under a constant pressure of 750 MPa. Green compacts were hot extruded at 500 °C and held for 45 min using a 45-tonnes hydraulic press at a ram speed of 1 mm/s with the extrusion ratio of 25:8. For simplicity, we denote the fabricated as Al-SiC nanocomposite rather than Al6061-SiC nanocomposite. Microstructures of the nanocomposite samples were characterized using a scanning electron microscope (CamScan MV2300, UK) and Transmission Electron Microscope (a Hitachi H-7000). X-ray diffraction (XRD) was used to determine phases in the nanocomposites using a Philips X'Pert MPD diffractometer with Cu K α radiation. Electron work functions (EWFs) of the samples were measured using a scanning Kelvin probe with a gold tip, provided by KP Technology (Caithness, UK). Before the test, each specimen was ground with silicon carbide papers up to 1200-grit, polished and cleaned with acetone.

The corrosion behavior of the samples respectively in 3% NaCl and 0.1 mol/l H₂SO₄ solutions was evaluated through electrochemical polarization measurement. Before the polarization test, each specimen connected to a copper wire was mounted in epoxy resin with a surface area of 1 cm² exposed to the corrosive solution. The exposed surface was ground with silicon carbide papers up to 800-grit and cleaned with acetone. A saturated calomel electrode (SCE) was used as the reference electrode and a platinum plate with area of 1 cm² was used as the counter electrode. The corrosion current density was determined using the Tafel extrapolation method.

Computational calculation. The first-principle method was employed to calculate work function of (111) plane of Al and (100) plane of silicon carbide (SiC), and the electron localization function (ELF) of valence electrons in interfacial zone between Al and SiC. The interface was constructed by connecting (111) plane of Al with (100) plane of SiC, followed by relaxation of the system to minimize the lattice misfit energy. The calculations were implemented with an ABINIT package^{22,23}. The Norm conserving pseudo-potentials²⁴ and Perdew-Burke-Ernzerhof Generalized Gradient Approximation (GGA) of exchange-correlation functional²⁵ were adopted for the calculation. An energy cut-off of 36 Hartree (1 Hartree = 27.211 eV) and a 6 × 6 × 1 k-point mesh was used to achieve self-consistent field convergence with the tolerant potential V(r) residual less than 10⁻⁸ Hartree. As for the ELF, it is defined as^{26,27}

$$ELF = \frac{1}{1 + \left(\frac{D(\vec{r})}{D_h(\vec{r})} \right)^2} \quad (1)$$

where

$$D(\vec{r}) = \frac{1}{2} \nabla_{\vec{r}} \nabla_{\vec{r}'} \rho(\vec{r}, \vec{r}') \Big|_{\vec{r}=\vec{r}'} - \frac{1}{8} \frac{|\nabla n(\vec{r})|^2}{n(\vec{r})} \quad (2)$$

and

$$D_h(\vec{r}) = \frac{3}{10} (3\pi^2)^{2/3} n(\vec{r})^{5/3} \quad (3)$$

where ρ is the first-order reduced density matrix with spin dependence, $D(\vec{r})$ is the kinetic energy functional, $D_h(\vec{r})$ is the kinetic energy density of uniform electron gas with a spin density equal to the local $n(\vec{r})$. The equations indicate that the value of ELF is close to the unity when valence electrons are highly localized, while it decreases to 0.5 when the distribution of valence electrons is similar to that of the homogeneous electron gas.

Results and Discussions

In Fig. 1, X-ray diffraction pattern (XRD), typical SEM and TEM images of the Al-3%SiC nanocomposite are presented. The prepared Al-3%SiC nanocomposite consisted of FCC structured Al matrix (Al6061) and Cubic structured SiC inclusions. No other phases, such as undesired Al₃C₄, were observed in the nanocomposite. From the SEM image, one may see that SiC nanoparticles were embedded in the Al matrix in a satisfied manner, no

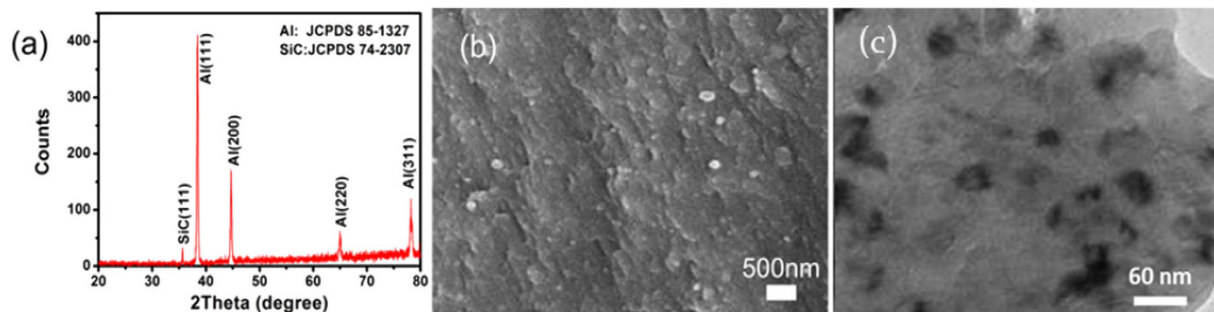


Figure 1. (a) XRD pattern, (b) SEM image, and (c) TEM image of Al-3%SiC nanocomposite.

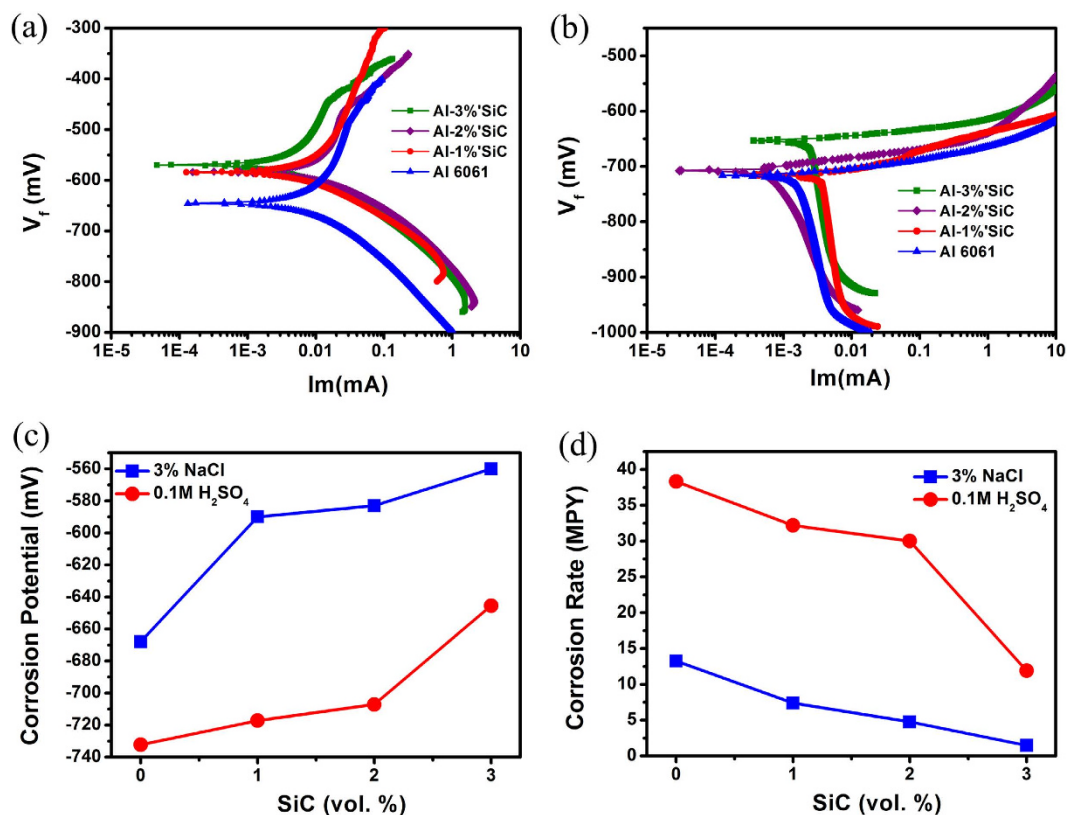


Figure 2. Polarization curves of Al-SiC nanocomposites in (a) 3%NaCl and (b) 0.1M H₂SO₄; (c) Corrosion potential versus the volume fraction of SiC nanoparticles in two corrosive solutions, respectively, and (d) Corrosion rate versus the volume fraction of SiC nanoparticles in the two corrosive solutions, respectively.

aggregation of SiC nanoparticles was observed on the surface. Furthermore, the TEM image also shows that the SiC nanoparticles are homogeneously distributed in the Al mixture and the particle size ranges from 20 nm to 60 nm.

Polarization curves, corrosion potential and corrosion rates of Al-SiC nanocomposites with different volume fractions of SiC nanoparticles in 3 wt.% NaCl and 0.1M H₂SO₄ solutions, respectively, are presented in Fig. 2. The H₂SO₄ solution is a strong corrosive medium and can corrode various metals in a uniform corrosion mode. In contrast, in the NaCl solution, Cl⁻ ions play a main role in corrosion, usually resulting in pitting and intergranular corrosion²⁸. In both the solutions, corrosion rate of the nanocomposite decreased with increasing the amount of SiC nanoparticles as shown in Fig. 2(d). It was noticeable that the added SiC nanoparticles did not deteriorate the corrosion resistance of Al-SiC nanocomposite due to any possible galvanic effect or lower interfacial resistance to corrosion attacks. Instead, the corrosion resistance was considerably improved.

The damage to a material by corrosion is affected by two determining factors, one is corrosion rate that is related to corrosion kinetics, and another is the corrosion tendency or potential. The lowered corrosion rate of Al6061 with SiC nanoparticles, compared to that of Al6061, could be partially ascribed to the fact that the SiC particulates basically remained inert in the corrosive solutions, which would not promote local galvanic effect,

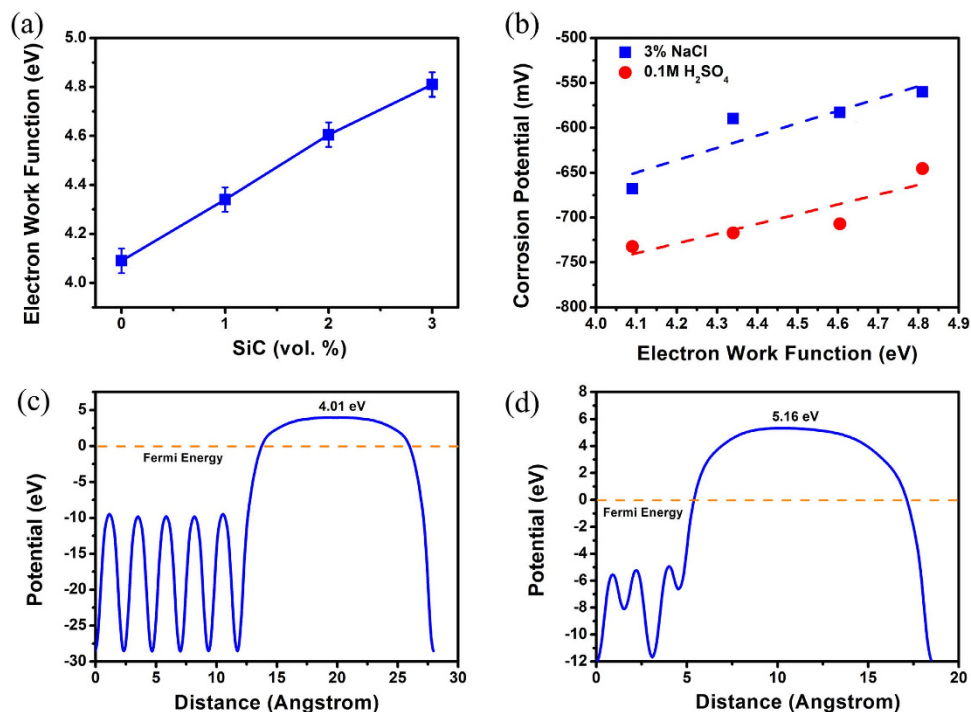


Figure 3. (a) EWFs of Al-SiC samples with different amounts of SiC nanoparticle, (b) observed linear relationship between the corrosion potential and EWF, (c) calculated electron work function of (111) plane of Al, and (d) calculated electron work functions of (100) plane of SiC.

and the dispersed SiC particles reduced the metallic surface area that was exposed to the solution, thus leading to lowered corrosion rate.

Another factor is the corrosion tendency, which is represented by the corrosion potential. A higher corrosion potential represents a lower tendency for corrosion. As shown in Fig. 2(c), in both corrosion solutions, the corrosion potential of Al6061 was raised by the added SiC nanoparticles, suggesting that adding SiC nanoparticles to the Al matrix reduced the driving force for corrosion. Such beneficial effect was enhanced by increasing the volume fraction of SiC nanoparticles as observed.

The increase in the corrosion potential generally results from lowered activity of valence electrons that participate in corrosion reactions, which is reflected by raised electron work function (EWF). In order to see whether or not the EWF had the capability of monitoring the variation in activity of valence electrons with the interface density in nanocomposites, EWFs of the nanocomposites was measured and are illustrated in Fig. 3(a). As shown, EWF of the nanocomposite increased from 4.1 eV to 4.8 eV with an increase in the volume fraction of SiC nanoparticles. The intrinsic resistance of a material to corrosion is related to its electron behavior or the work function while its corrosion potential or electrochemical potential is environment-dependent. The relationship between the electrochemical potential (ϕ_m) and the electron work function (φ_m) of the metal can be generally expressed as²⁹:

$$\phi_m = \varphi_m + \Delta_s^m \phi \quad (4)$$

where $\Delta_s^m \phi$ is the contact potential difference at the metal/solution interface. Thus, in different solutions, ϕ_m of a metal varies due to different values of $\Delta_s^m \phi$ in different solutions, such as the salty and acidic solutions used in the present study. For the SiC/Al nanocomposites having different volume fractions of the same type metallic matrix, $\Delta_s^m \phi$ should be a constant. As a result, the corrosion potential and work function should be linearly correlated, which has indeed been confirmed as Fig. 3(b) illustrates.

In order to understand the mechanism for the increase in the overall EWF with the added SiC nanoparticles, we calculated electron work functions of Al (111) crystal plane and SiC (100) plane. Selecting these planes for the calculation is attributed to the fact that the low-index planes with low surface energies are thermodynamically stable and more representative. The calculation shows that electron work functions of Al (111) crystal plane and SiC (100) plane are 4.01 eV and 5.16 eV, respectively (see Fig. 3(c,d)). When a metallic element with a higher work function is added to another metal having a low work function, the overall work function can be increased³⁰, due to the fact that the former brings in more valence electrons, leading to an increase in valence or free electron density and consequently the work function. When a ceramic compound having a higher EWF is added to a metal matrix, an increase in the overall EWF is also expected. This has been proven by the experimental result shown in Fig. 3(a); however, the mechanism responsible for the increase in work function needs to be clarified, which has been done in the following paragraphs.

Considering the rise in EWF is an indication of an increase in valence electron density²¹, to which the polarizability is inverse proportional¹⁵, it is suggested that the increase in EWF may lead to a decrease in the polarizability or

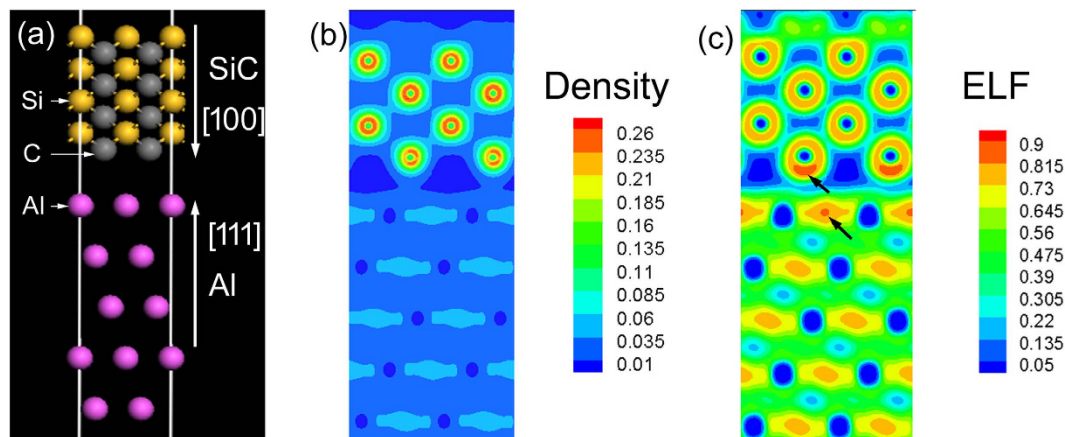


Figure 4. The atomic configuration at the Al-SiC interface (the grey atom is C, the yellow atom is Si, and the purple atom is Al), (b) the distribution of valence electron density, (c) ELF of valence electrons. As pointed by arrows, valence electrons in the interfacial region show higher localization, compared to those apart away from the interface.

increased polarization resistance. Furthermore, owing to the decrease in polarizability, the material becomes more resistant to external fields and thus more inert¹¹. It is therefore expected that lower polarizability corresponds to decreased chemical reactivity. Or in other words, the smaller the polarizability, the greater the chemical hardness³¹. As a result, the increase in EWF responds to a reduction of the chemical reactivity. The EWF appears to be a good indicator for the chemical reactivity of materials.

An important issue here that needs to be clarified is “by which means the SiC nanoparticles can increase the EWF of the nanocomposites”. For a metallic material, its overall EWF is usually increased by adding elements with higher EWF if the added elements are dissolved in the material without forming second phases³⁰. This happens because the density of valence electrons is increased when the higher-EWF elements are added. However, SiC is a non-metallic material. Considering a semiconductor-metal junction, where an electrical field could be built within the interface region under equilibrium condition³², the property of valence electrons in the vicinity of Al-SiC interfaces should be analyzed. In order to understand why the SiC nanoparticles raised the overall EWF, the electron density distribution and electron localization function (ELF) in the region of SiC-Al interface were calculated. The Al-SiC interface was constructed by connection between (111) plane of Al and (100) plane of SiC as illustrated in Fig. 4(a), since this configuration has maximal cohesive energy according to the study conducted by Luo *et al.*³³. Calculated profiles of valence electron density distribution and ELF are presented in Fig. 4(b,c). From the valence electron density distribution, one may see that the valence electrons in carbon atoms are dragged downwards the interfacial region. This is consistent with the observation that interaction between Al and C atoms or the Al-C atomic bond is stronger than the Al-Si atomic bond³⁴. The increase in EWF by adding SiC nanoparticles could be attributed to an increase in the electron density originating from the injection of electron from carbon atom electrons. Furthermore, according to the profile of ELF shown in Fig. 4(c), the electrons in the interfacial region have a higher degree of localization, as pointed by arrows, compared to those apart away from the interface no matter they are in the Al lattice or in the SiC lattice. This indicates that valence electrons are more confined in the interfacial region. With an increase in interfacial area as SiC nanoparticles added in Al matrix along with markedly reduced spacing between adjacent SiC nanoparticles, the confinement would be considerably enhanced to reduce the electron activity. This also resulted in a higher barrier to the escape of electrons from the system, corresponding to the raised electron work function. As a result, the Al-SiC nanocomposite possesses elevated corrosion resistance.

In summary, the corrosion behavior of SiC nanoparticle-reinforced Al6061 matrix composite in 3% NaCl and 0.1M H₂SO₄ solutions, respectively, were investigated. It was observed that the corrosion resistance of the Al-SiC nanocomposite was higher than the Al matrix (Al6061). Corresponding electron work function (EWF) of the Al-SiC nanocomposite increased, accompanied with an increase in the corrosion potential. The first-principle calculation indicates that the improvement in corrosion resistance is attributed to the electron localization in the interfacial region between the Al matrix and SiC particle. Such an effect would become profound when the SiC particle size is reduced to the nanoscale, with which the interfacial area is significantly increased along with markedly reduced spacing between adjacent SiC nanoparticles, leading to considerably enhanced electron confinement.

References

- Hull, D. *An introduction to composite materials*. (Cambridge University Press, Cambridge; New York, 1981).
- Mobasherpour, I., Tofigh, A. A. & Ebrahimi, M. Effect of nano-size Al₂O₃ reinforcement on the mechanical behavior of synthesis 7075 aluminum alloy composites by mechanical alloying. *Materials Chemistry and Physics* **138**(2–3), 535–541 (2013).
- Fu, N. *et al.* *In situ* investigation of local corrosion at interphase boundary under an electrochemical-atomic force microscope. *J Solid State Electrochem* **1–8**, 337–344 (2014).
- Mishra, A. K., Balasubramaniam, R. & Tiwari, S. Corrosion inhibition of 6061-SiC by rare earth chlorides. *Anti-Corrosion Methods and Materials* **54** (1), 37–46 (2007).
- Buarzaiga, M. M. & Thorpe, S. J. Corrosion Behavior of As-Cast, Silicon Carbide Particulate-Aluminum Alloy Metal-Matrix Composites. *Corrosion* **50** (3), 176–185 (1994).

6. Abdoli, H. *et al.* Processing and surface properties of Al–AlN composites produced from nanostructured milled powders. *Journal of Alloys and Compounds* **490** (1–2), 624–630 (2010).
7. Callister, W. D. *Materials science and engineering: an introduction*. (Wiley, New York, 2000).
8. Suryanarayana, C. & Al-Aqeeli, N. Mechanically alloyed nanocomposites. *Progress in Materials Science* **58** (4), 383–502 (2013).
9. Moazami-Goudarzi, M. & Akhlaghi, F. Effect of nanosized SiC particles addition to CP Al and Al–Mg powders on their compaction behavior. *Powder Technol* **245** (0), 126–133 (2013).
10. Ravindran, P. *et al.* Application of factorial techniques to study the wear of Al hybrid composites with graphite addition. *Mater Design* **39** (0), 42–54 (2012).
11. Sabirov, D. S. Polarizability as a landmark property for fullerene chemistry and materials science. *Rsc Adv* **4** (85), 44996–45028 (2014).
12. Mitroy, J., Safronova, M. S. & Clark, C. W. Theory and applications of atomic and ionic polarizabilities. *J Phys B-at Mol Opt* **43** (20), 202001 (2010).
13. Koldaivel, P., Mahalingam, T. & Sugandhi, K. Polarizability and chemical hardness - A combined study of wave function and density functional theory approach. *Int J Quantum Chem* **86** (4), 368–375 (2002).
14. Bartolotti, L. J. Polarizability as a Local Functional of the Electron-Density. *P Indian as-Chem Sci* **106** (2), 103–110 (1994).
15. March, N. H. & Tosi, M. P. Inverse relation between polarizability and valence-electron density at the nucleus. *Journal of Molecular Structure: THEOCHEM* **343** (0), 199–201 (1995).
16. Gilman, J. J. Chemical and physical “hardness”. *Mater Res Innov* **1** (2), 71–76 (1997).
17. Zhou, Y. H. *et al.* A Universal Method to Produce Low-Work Function Electrodes for Organic Electronics. *Science* **336** (6079), 327–332 (2012).
18. You, J. B. *et al.* Enhancement of field emission of the ZnO film by the reduced work function and the increased conductivity via hydrogen plasma treatment. *Appl Phys Lett* **94** (26), 262105 (2009).
19. Zasada, F. *et al.* Potassium Promotion of Cobalt Spinel Catalyst for N(2)O Decomposition—Accounted by Work Function Measurements and DFT Modelling. *Catal Lett* **127** (1–2), 126–131 (2009).
20. Heo, S. W., Lee, E. J., Seong, K. W. & Moon, D. K. Enhanced stability in polymer solar cells by controlling the electrode work function via modification of indium tin oxide. *Sol Energ Mat Sol C* **115**, 123–128 (2013).
21. Hua, G. M. & Li, D. Y. Generic relation between the electron work function and Young’s modulus of metals. *Appl Phys Lett* **99** (4), 041907 (2011).
22. Gonze, X. *et al.* A brief introduction to the ABINIT software package. *Z Kristallogr* **220** (5–6), 558–562 (2005).
23. Gonze, X. *et al.* ABINIT: First-principles approach to material and nanosystem properties. *Comput Phys Commun* **180** (12), 2582–2615 (2009).
24. Fuchs, M. & Scheffler, M. Ab initio pseudopotentials for electronic structure calculations of poly-atomic systems using density-functional theory. *Comput Phys Commun* **119** (1), 67–98 (1999).
25. Perdew, J. P., Burke, K. & Ernzerhof, M. Generalized gradient approximation made simple. *Physical Review Letters* **77** (18), 3865–3868 (1996).
26. De Santis, L. & Resta, R. Electron localization at metal surfaces. *Surface Science* **450** (1–2), 126–132 (2000).
27. Savin, A., Nesper, R., Wengert, S. & Fassler, T. F. ELF: The electron localization function. *Angewandte Chemie-International Edition in English* **36** (17), 1809–1832 (1997).
28. Song, G. L. & Haddad, D. The topography of magnetron sputter-deposited Mg–Ti alloy thin films. *Materials Chemistry and Physics* **125** (3), 548–552 (2011).
29. John, O. M. B. & Shahed, U. M. K. *Surface electrochemistry: a molecular level approach*. (Springer, New York, 1993).
30. Lu, H., Hua, G. & Li, D. Dependence of the mechanical behavior of alloys on their electron work function—An alternative parameter for materials design. *Appl Phys Lett* **103** (26), 261902 (2013).
31. Gilman, J. J. *Electronic Basis of the Strength of Materials*. (Cambridge University Press, 2003).
32. Li, S. S. *Semiconductor physical electronics*. (Plenum Press, New York, 1993).
33. Luo, X., Qian, G. F., Wang, E. G. & Chen, C. F. Molecular-dynamics simulation of Al/SiC interface structures. *Phys Rev B* **59** (15), 10125–10131 (1999).
34. Wenchang, L., Kaiming, Z. & Xide, X. Adsorption of aluminum on β -SiC(100) surfaces. *Phys Rev B* **45** (19), 11048–11053 (1992).

Acknowledgements

The authors are grateful to the Natural Science and Engineering Research Council of Canada (NSERC), AUTO21, Suncor Energy Inc., and GIW for financial support.

Author Contributions

S.M. carry out the experimental work and G.H. perform the computer simulation, and both prepared the original manuscript. F.A., X.Y. and D.L. edited the manuscript, and the latter conveyed and looked after the entire investigation.

Additional Information

Competing financial interests: The authors declare no competing financial interests.

How to cite this article: Mosleh-Shirazi, S. *et al.* Interfacial valence electron localization and the corrosion resistance of Al–SiC nanocomposite. *Sci. Rep.* **5**, 18154; doi: 10.1038/srep18154 (2015).



This work is licensed under a Creative Commons Attribution 4.0 International License. The images or other third party material in this article are included in the article’s Creative Commons license, unless indicated otherwise in the credit line; if the material is not included under the Creative Commons license, users will need to obtain permission from the license holder to reproduce the material. To view a copy of this license, visit <http://creativecommons.org/licenses/by/4.0/>