

SCIENTIFIC REPORTS



OPEN

A load of mice to hypergravity causes AMPK α repression with liver injury, which is overcome by preconditioning loads via Nrf2

Received: 24 July 2015
Accepted: 23 September 2015
Published: 23 October 2015

Sang Gil Lee^{1,*}, Chan Gyu Lee^{1,*}, Hong Min Wu¹, Choong Sik Oh², So Won Chung² & Sang Geon Kim¹

An understanding of the effects of hypergravity on energy homeostasis is necessary in managing proper physiological countermeasures for aerospace missions. This study investigated whether a single or multiple load(s) of mice to hypergravity has an effect on molecules associated with energy metabolism. In the liver, AMPK α level and its signaling were repressed 6 h after a load to +9 Gz hypergravity for 1 h, and then gradually returned toward normal. AMPK α level was restored after 3 loads to +9 Gz, suggestive of preconditioning adaptation. In cDNA microarray analyses, 221 genes were differentially expressed by +9 Gz, and the down-regulated genes included Nrf2 targets. Nrf2 gene knockout abrogated the recovery of AMPK α elicited by 3 loads to +9 Gz, indicating that Nrf2 plays a role in the adaptive increase of AMPK α . In addition, +9 Gz stress decreased STAT3, FOXO1/3 and CREB levels, which was attenuated during the resting time. Similarly, apoptotic markers were enhanced in the liver, indicating that the liver may be vulnerable to hypergravity stress. Preconditioning loads prevented hepatocyte apoptosis. Overall, a load of mice to +9 Gz hypergravity causes AMPK α repression with liver injury, which may be overcome by multiple loads to hypergravity as mediated by Nrf2.

Humans are adapted to live the accelerative force of gravity. Alteration of gravity (hypergravity and/or microgravity) represents a powerful physical cue to exert modeling effects on both anatomy and function of living organisms^{1–9}. Hypergravity forces intermittently subject an organism to a myriad of stresses, potentially disrupting cytoskeletal and organelle structures, and energy metabolism. Exposure to altered hypergravity implies detrimental effects on muscle mass¹⁰, composition¹¹, and contractility³, and on bone density, with long-term effects even after return to normal gravity¹². Many studies have focused on simulated microgravity which had effects on the nervous system, in some cases not perturbing cell differentiation and assembling^{13–15}, in other cases strongly altering cell morphology and functions¹⁶ or improving stem cell differentiation into neurons^{8,17,18}.

Few reports deal with hypergravity effects on biological systems. Astronauts experience a hypergravity of +3.2 Gz at launch and +1.4 Gz on reentry. In case of manned spacecraft, astronauts were exposed up to +3.6 ~ +4.0 Gz for ~30 seconds when first engines cut-off after launch. They were then exposed to hypergravity up to +2 Gz for ~100 seconds when second engines cut-off¹⁹. Pilots of jet fighter plane may be exposed up to +9 Gz for a few seconds. It is generally accepted that a high gravitational acceleration force acting along +Gz causes considerable strain on organs. Thus, an understanding of the effects of hypergravity on energy homeostasis would be of help in managing proper countermeasures to assure safe and effective aerospace missions and human survival under a hypergravity condition. Exposure to

¹College of Pharmacy and Research Institute of Pharmaceutical Sciences, Seoul National University, Seoul, Korea. ²Aerospace Medical Center, ROKAF, Cheong-ju, Korea. *These authors contributed equally to this work. Correspondence and requests for materials should be addressed to S.G.K. (email: sgk@snu.ac.kr)

hypergravity could induce protein ubiquitination of muscle cell line, demonstrating that ubiquitination was induced by treatment of the cells at +100 G for 1 h²⁰. In addition, hypergravity affects myoblast proliferation and differentiation²¹, PC12 cell differentiation *in vitro*²², and cyclooxygenase-2 expression in the heart vessels *in vivo*²³. Dysregulation of immune function by chronic exposure has also been reported²⁴. In the study of Oguro *et al.*²⁵, the expression of HSP47, a collagen-specific molecular chaperone, responds to gravitational changes (i.e., hypergravity or microgravity *in vitro* and *in vivo*).

The liver is a continuous sponge-like parenchymal mass consisting of the interdigitating networks of afferent and efferent vessels and is featured by compliance, high capacity and energy metabolism. Hence, the liver tissue may be more susceptible to hemodynamic changes such as physical or compressional stress. In addition to the direct pressure changes on the hepatic cell during aerospace craft launch or take-off and the accompanying temporal changes in physical integrity of cellular organelles, altered hemodynamic circulation and sheer stress would have an effect on macromolecules associated with metabolism in the liver and consequently energy production. At the molecular level, AMP-activated protein kinase (AMPK), an intracellular energy sensor, plays a key role in the regulation of transcription factors such as STAT3, FoxO1/3 and CREB, inhibiting hepatic gluconeogenesis and synthesis of glycogen, fatty acid and cholesterol^{26–30}.

In view of the lack of an understanding on the effect of hypergravity stress and the impact of accompanying changes in hemodynamic circulation and sheer stress on biological system, this study investigated whether a single or multiple load(s) to +3Gz or +9Gz hypergravity has a detrimental effect on the integrity of the liver, skeletal muscle and kidney in a mouse model, and the molecules associated with energy metabolism, and cell viability, particular focusing on those associated with energy homeostasis in the liver. Here, we report that a single load of mice to +9Gz causes a compressional injury stress on the liver, decreasing AMPK α and key transcription factor levels, reflective of liver susceptibility to hypergravity, and that the changes gradually return to basal conditions during resting times. Our finding also demonstrates the preventive effect of repetitive training loads on hypergravity stress and the role of nuclear factor erythroid-2-related factor 2 (Nrf2), a master transcription factor regulating cellular redox homeostasis, in the adaptation process.

Results

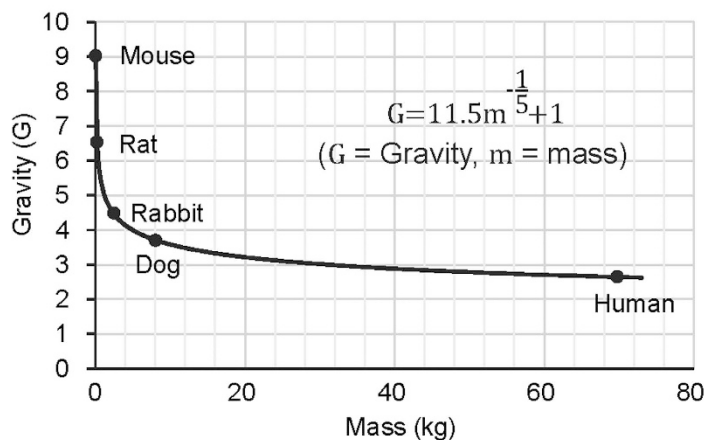
Effects of +3 or +9 Gz hypergravity load on tissue injury markers. The relationship between the size of animal and its gravity response has been considered with the primary end point being survival, and scaling in hypergravity has been attempted in observations of the effects to animals. In the earlier work, a decrease in the magnitude of gravity load that an animal can survive was relative to its body mass among different species including mice, rats, rabbit and dogs³¹. In the current study, we created a new equation using reported effects of gravity on mortality vs. masses of the animal species, trying to extrapolate the data to human cases (Fig. 1A). The equation enabled us to predict gravity load in mice corresponding to humans; +9Gz to mice approximated to the intensity of +2.7G to humans.

To assess the effects of hypergravity forces on major organs, we first measured the activities of aminotransferases, creatine phosphate kinase (CPK), blood urea nitrogen (BUN) and creatinine contents in serum as representative injury markers of the liver, skeletal muscle and kidney, respectively, immediately after an exposure of mice to +3 or +9Gz hypergravity (Fig. 1B). A load of mice to either +3Gz or +9Gz for 1 h significantly increased serum AST activity. There was also a tendency of increase in serum ALT activity. A load to either +3 or +9Gz for 1 h significantly increased CPK and BUN in serum. Although exposure of mice to +9Gz for 3 h increased both ALT and AST activities, two out of six animals died after treatment. In addition, a load to +9Gz for 3 h increased BUN, but not in CPK, probably due to its smaller sample size (as a result of mortality). Our data raised the possibility that an exposure of mice to +3 or +9Gz force for 1 h or 3 h may cause compressional injuries of the organs. In another set of experiments, we found increases of serum aminotransferase activities during the resting times following a load to +9Gz for 1 h although other parameters such as CPK and BUN returned toward normal (data not shown). Subsequently, we chose +9Gz for 1 h treatment regimen to acquire a non-lethal maximal effect. Since the liver seems to be more vulnerable to the stress of hypergravity load due to its sponge-like structural mass, we next focused on hepatic molecules associated with energy metabolism and cell viability.

Alteration of AMPK signaling by +9 Gz hypergravity. Hypergravity load may trigger a cascade of molecular changes, inducing adaptation at later times. Next, we examined the status of AMPK, an intracellular sensor for energy homeostasis, by monitoring AMPK subunits and the signaling pathway 6, 12, or 24 h after a single load to +9Gz hypergravity for 1 h. AMPK α levels were notably diminished 6 h after treatment, which returned toward normal at later times (Fig. 2A). In contrast, AMPK β 1 and γ 1/2/3 were not notably changed. Consistently, the level of p-AMPK, an indicator of AMPK activity, was decreased 6 h after +9Gz load, and this effect was attenuated at later times. p-ACC levels were maximally lowered 6 h after hypergravity stress, confirmative of the inhibition of AMPK. ACC levels were also diminished and then returned to normal condition. Hepatic AMPK signaling (p-AMPK α) was unchanged immediately after +9Gz load (data not shown), implying that AMPK signaling might be diminished and recover during resting time.

We were also interested in the effect of multiple loads to +9Gz hypergravity on AMPK subunits. In this model, a 6 h time-point after last exposure to +9Gz was chosen to compare the effect with that of a

A)



B)

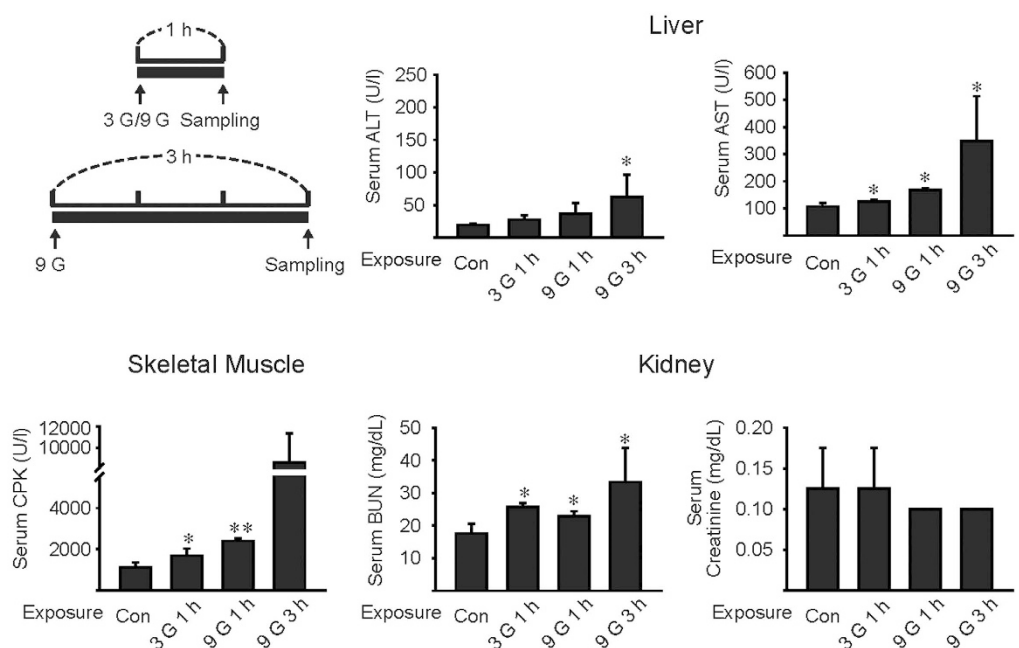


Figure 1. Changes of hematological indexes by a load to +3 or +9 Gz hypergravity. (A) A new equation created using reported effects of gravity on mortality vs. masses of different animals. A scaling in hypergravity was extrapolated to that of human using the proposed equation. **(B)** Hematological parameters. The activities of aminotransferases, creatine phosphate kinase (CPK), blood urea nitrogen (BUN) and creatinine contents in serum were measured as injury markers of the liver, skeletal muscle and kidney, respectively, immediately following exposure of mice to a single load to +3 or +9 Gz for 1 h or 3 h. Data represent the mean \pm S.E (N = 3–4 each). Statistical significance of the differences between hypergravity stress and control group (* $P < 0.05$, ** $P < 0.01$). Con, control.

single load. Interestingly, AMPK α level was almost completely restored 6 h after 3 consecutive daily loads to +9 Gz (Fig. 2B). p-ACC levels matched with this result. AMPK β 1 and γ 1/2/3 levels were comparable to those in control. Collectively, a single load of mice to +9 Gz hypergravity for 1 h suppressed AMPK α , but not other subunits, at 6 h after treatment, and this inhibition of AMPK α was overcome by repetitive preconditioning loads.

cDNA microarray analysis of the genes affected by +9 Gz load. As an effort to find out the genes whose expression is affected by hypergravity load(s), we performed cDNA microarray assays using the liver of mice exposed to a single or multiple load(s) of hypergravity (6 h after +9 Gz treatment for 1 h), and the microarray profiles were compared (Fig. 3A). Among those represented on the microarray, 221 genes were differentially expressed by a load of +9 Gz when $P < 0.05$ and a 1.5-fold change cutoff were used. Bioinformatic analyses using Functional Enrichment Analysis allowed us to select the genes

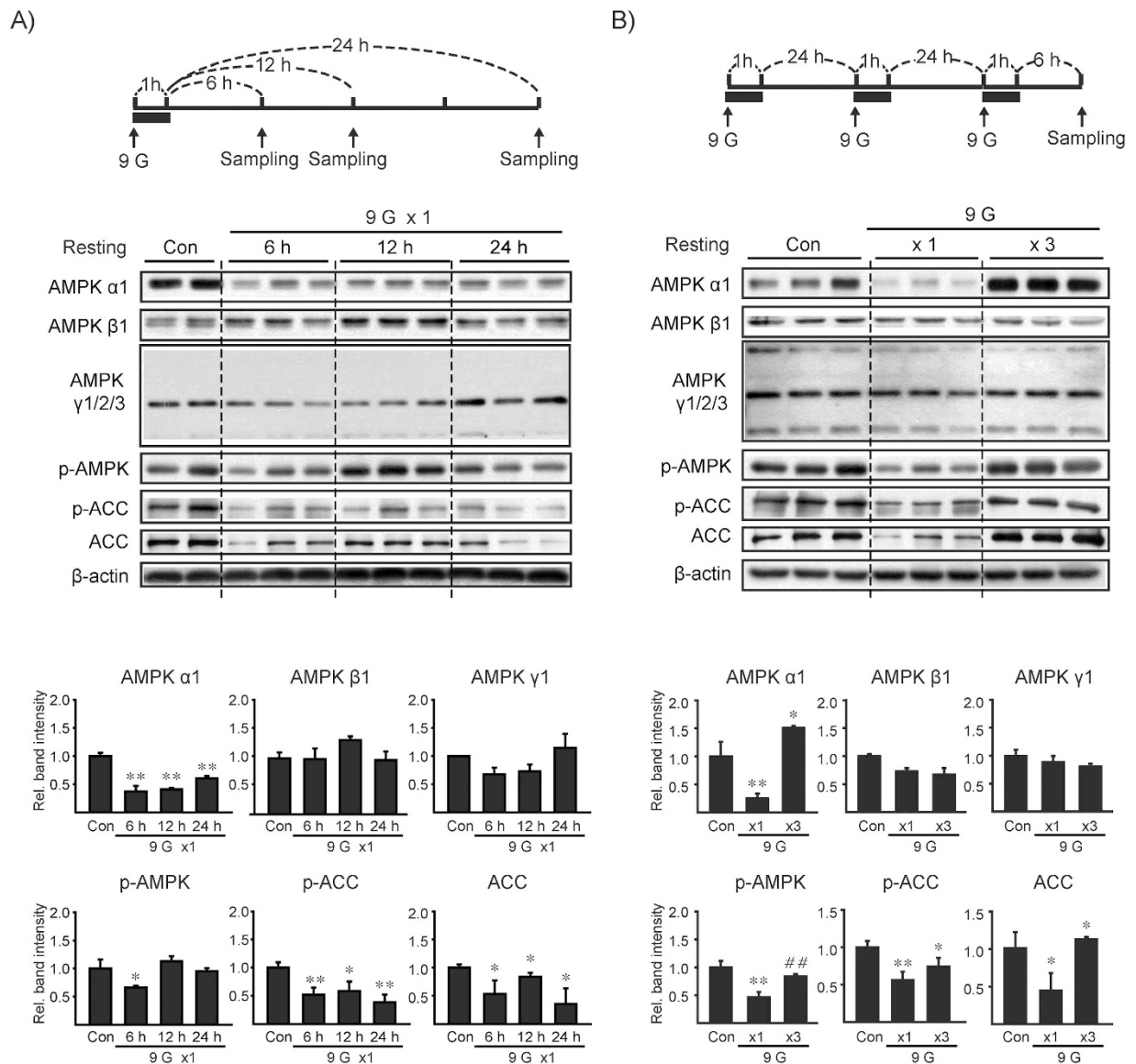
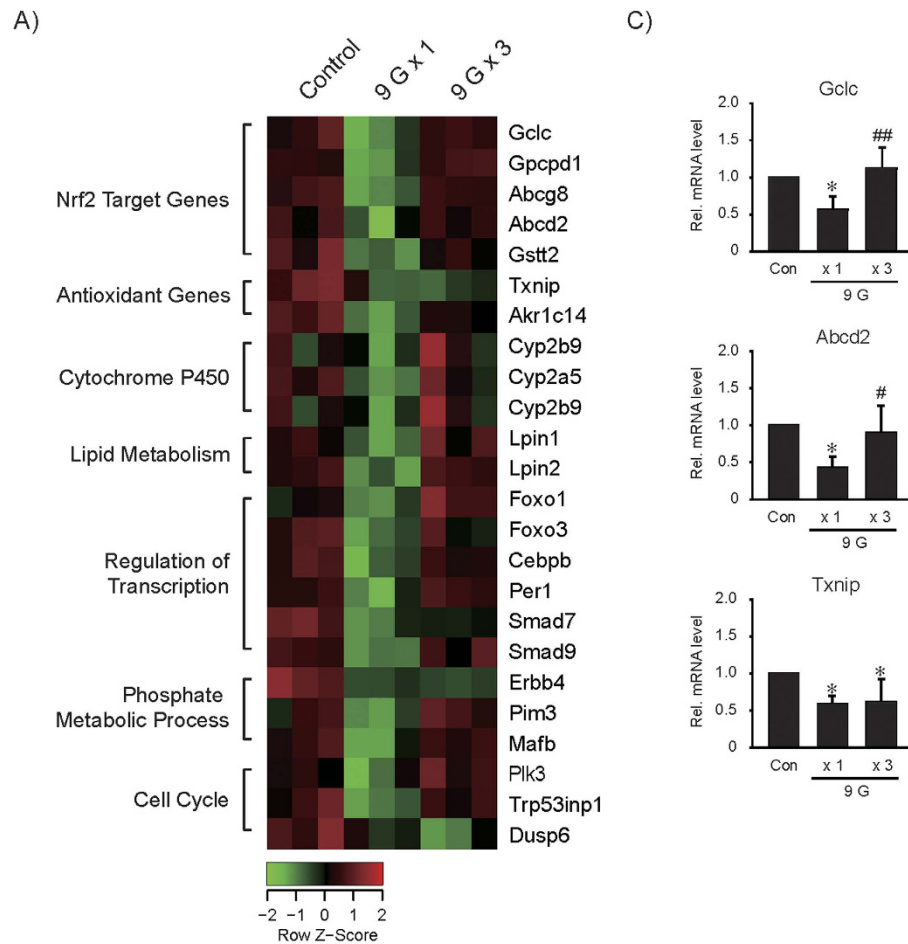


Figure 2. AMPK subunit levels and its signal intensity after load(s) to +9 Gz hypergravity. (A, B) Immunoblottings for AMPK α 1, β 1, γ 1/2/3, p-AMPK, p-ACC and ACC in liver homogenates (Top). C57BL/6 mice were subjected to a single load to +1 Gz (control, Con) or +9 Gz for 1 h (x1), or to three consecutive daily loads (x3), and the liver samples were obtained at the indicated times after treatment. Of six different samples, two or three representative lanes were shown in each group. Scanning densitometry was done to assess relative changes (bottom). Data represent the mean \pm S.E (N = 6 each). Statistical significance of the differences was determined as compared to control group (* P < 0.05, ** P < 0.01) or to a single load to +9 Gz (## P < 0.01).

down-regulated by a single load of hypergravity, which included Nrf2 target genes, antioxidant genes, cytochrome P450s, and the genes associated with lipid metabolism, transcriptional regulation, or cell cycle control (Fig. 3B). In DEG analysis, a load of +9 Gz suppressed a subset of Nrf2-target genes (Gclc, Gpcpd1, Abcg8, Abcd2 and Gstt2) and two other antioxidant genes. Nrf2 target genes were all significantly inhibited by a single exposure to hypergravity and were restored after multiple exposures. Of the antioxidant genes, *Akr1c14* mRNA level was comparable to that of Nrf2 target transcripts. In contrast, *Txnip* mRNA level, which was initially suppressed by a load to +9 Gz, failed to return toward basal after three loads to +9 Gz. qRT-PCR assays verified substantial and significant inhibition of Nrf2 target transcripts (Gclc and Abcd2), and this effect was abolished after 3 consecutive loads (Fig. 3C). The lack of adaptive *Txnip* recovery was also confirmed.

The differential effect of a single or multiple load(s) to +9 Gz on Nrf2-dependent and Nrf2-independent genes prompted us to explore the link between Nrf2 and adaptive recovery of AMPK α . In immunoblotting



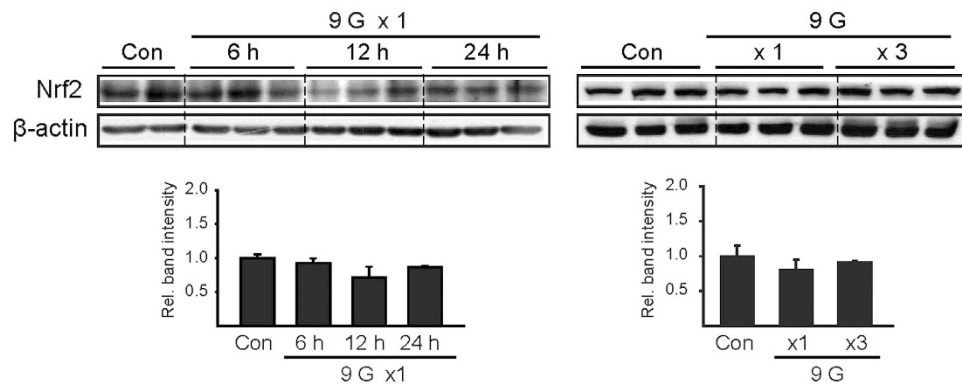
B)

	Gene symbol	Gene name	9Gx1/con FC	9Gx1/con adj.pval	9Gx3/con FC	9Gx3/con adj.pval
Nrf2 Target Genes	Gclc	glutamate-cysteine ligase	-1.538	0.009	-1.018	1.000
	Gpcpd1	glycerophosphocholine phosphodiesterase GDE1	-1.805	0.000	-1.105	1.000
	Abcg8	ATP-binding cassette, sub-family G	-2.169	0.000	-1.067	1.000
	Abcd2	ATP-binding cassette, sub-family D	-1.627	0.000	-1.158	1.000
	Gstt2	glutathione S-transferase theta 2	-1.875	0.000	-1.366	0.116
Anti-oxidant	Akr1c14	aldo-keto reductase family 1	-1.564	0.000	-1.214	0.817
	Txnip	Thioredoxin interacting protein	-1.889	0.000	-1.963	0.000

Figure 3. cDNA microarray and qRT-PCR assays. (A) Heat map. cDNA microarray analyses were done on RNA samples extracted from the liver. Mice were subjected to a single load to +1 Gz (control, Con) or +9 Gz for 1 h, or to three consecutive daily loads, and the liver samples were obtained 6 h after treatment (N = 3 each). (B) Relative changes and significance values for the transcripts of a subset of genes targeted by Nrf2 and two Nrf2-independent antioxidant genes. (C) qRT-PCR assays for Gclc, Abcd2 and Txnip in the liver. Data represent the mean \pm S.E (N = 4 each). Statistical significance of the differences was determined as compared to control group (* P < 0.05) or to a single load to +9 Gz treatment (* P < 0.05, ** P < 0.01).

assays, Nrf2 levels were not significantly changed during the resting times after a load to hypergravity (Fig. 4A). In addition, multiple exposures to +9 Gz did not change Nrf2 levels. Next, we used Nrf2 knockout (KO) animals to assess the impact of Nrf2 on the adaptive change of AMPK α . Intriguingly, a deficiency of Nrf2 completely abrogated restoration of AMPK α in the liver of mice loaded to +9 Gz hypergravity 3 times (Fig. 4B). This was verified by AMPK α or ACC phosphorylation. Our results

A)



B)

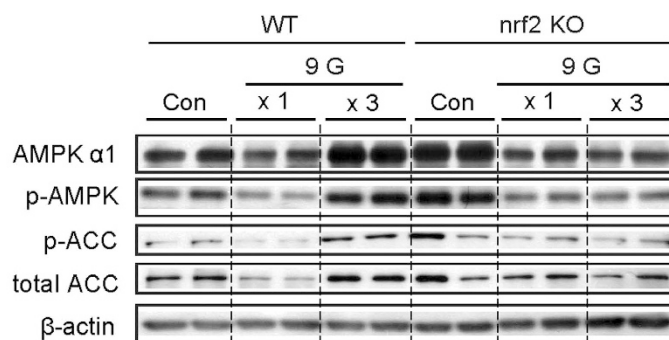


Figure 4. Nrf2 levels after load(s) to +9 Gz and the effect of Nrf2 gene knockout on AMPK.

(A) Immunoblottings for Nrf2 in the liver. Mice were treated as described in the panels to Fig. 2. Of six different samples, two or three representative lanes were shown in each group. Data represent the mean \pm S.E (N = 6 each). No statistical significance of the differences was found between each treatment group and control. (B) Immunoblottings on the liver samples. C57BL/6 mice (wild type) or Nrf2 gene knockout (KO) mice were treated as described in the panel A to Fig. 3. Of three different samples, two lanes were shown in each group.

indicate that Nrf2 may be necessary for adaptive recovery of AMPK α and the signaling pathway in the liver against hypergravity stress.

Liver injury markers after +9 Gz hypergravity load. In subsequent experiments, we determined whether +9 Gz hypergravity load deteriorates hepatocyte function by measuring apoptosis or cell-survival markers. Total PARP-1 contents were markedly diminished with reciprocal increases of cleaved PARP-1 throughout the times examined (Fig. 5A upper). Of the time points, cleaved PARP-1 was most distinctly increased 6 h after a single load to +9 Gz. Consistently, cleaved caspase-3, a terminal caspase indicating apoptosis, was greatly elevated at 12 h. Likewise, Bcl2 levels were decreased. Total Akt was lowered 6 h or later times with variations noted in p-Akt levels (Ser473/Thr308). Repeated experiments confirmed alterations in apoptosis or cell-survival markers although variations existed in the animal experimentation (Fig. 5A lower). Adaptation to repeated hypergravity loads was also verified by molecular markers (Fig. 5B).

To confirm hepatocyte injury, we next examined the time-course profile of transaminases in the blood during the resting period. ALT and AST activities were increased 6 h after a single load to +9 Gz and then gradually returned toward normal at 24 h (Fig. 5C). Increases of ALT and AST activities were not found in the animals exposed to 3 consecutive loads, confirming that training exposures induce adaptation. Blood glucose levels were 32%–37% decreased 6 or 12 h after a +9 Gz hypergravity load, and returned to normal range at 24 h (Fig. 5D), being consistent with the degrees of liver dysfunction and inhibition of gluconeogenesis. Repetitive training loads also overcame hypoglycemia. Overall, our results provide strong evidence that a load to +9 Gz triggers apoptotic cascade, decreasing hepatocyte survival, and which can be overcome by preconditioning loads to hypergravity.

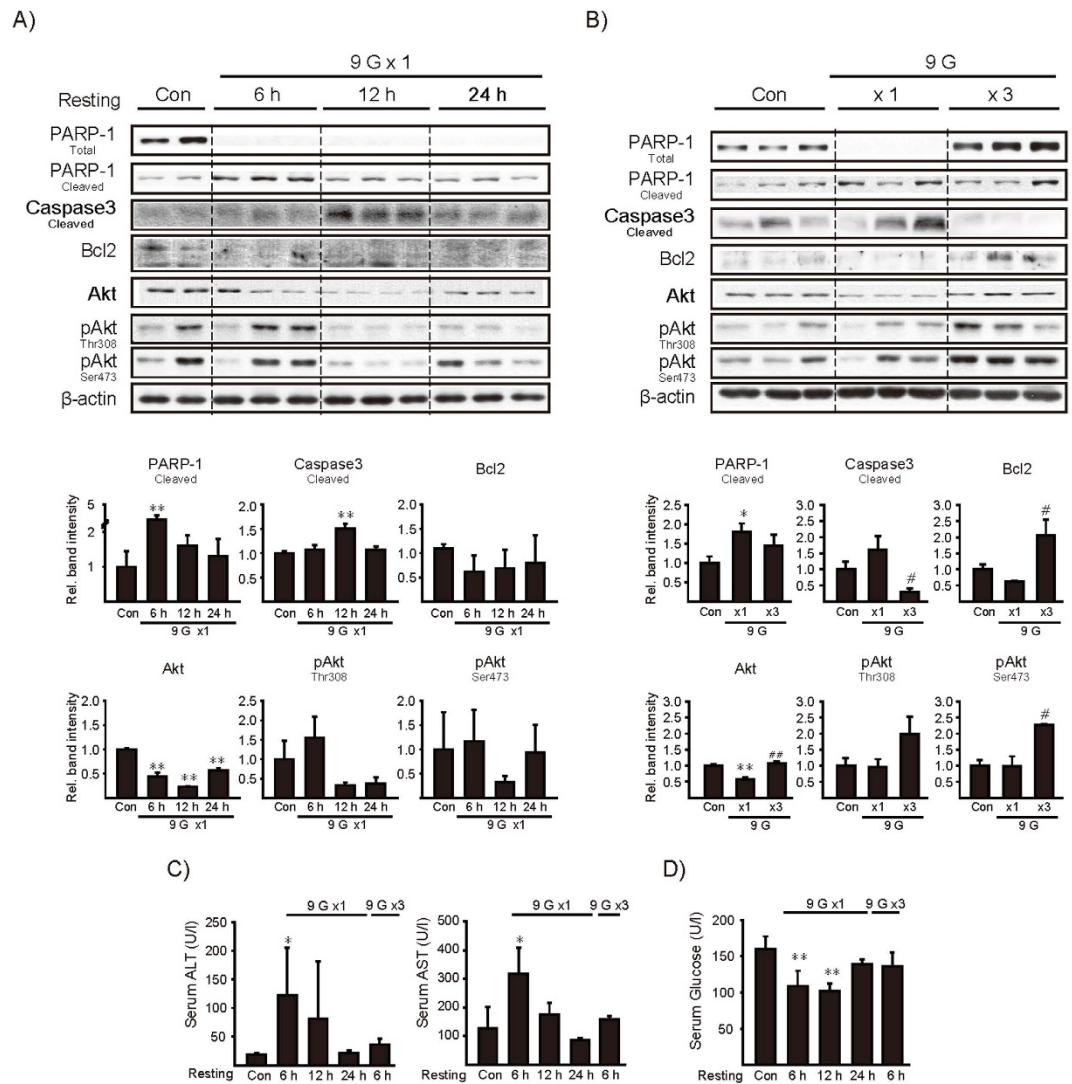


Figure 5. The effects of +9 Gz load(s) on the markers associated with hepatocyte viability or blood glucose contents. (A,B) Immunoblottings for the molecules associated with apoptosis or cell survival in the liver. Mice were treated as described in the panels to Fig. 2. Of six different samples, two or three representative lanes were shown in each group. (C) Serum transaminase activities. (D) Serum glucose levels. For A-D, data represent the mean±S.E (N=6 each). Statistical significance of the differences was determined as compared to control group (* $P < 0.05$, ** $P < 0.01$) or to a single load to +9 Gz (# $P < 0.05$, ## $P < 0.01$).

Transcription factors and mitochondrial markers after a single or multiple +9 Gz load(s). We then determined whether single or multiple load(s) to +9 Gz alter(s) transcription factor levels in the liver. In the assays, STAT3, CREB, FOXO1 and FOXO3 were included because they are associated with IL-6 and insulin/IGF-1/PI3K pathways^{32,33}. A single load to +9 Gz mostly repressed expression of the transcription factors and/or their phosphorylation levels (Fig. 6A). They were recovered or rather enhanced 6 h after last exposure to +9 Gz in the multiple load model despite some variations (Fig. 6B). These results showed that most of the transcription factors examined were inhibited by a load of hypergravity, and the expression levels were restored or enhanced after repetitive loads.

Since +9 Gz hypergravity stress consistently and significantly repressed AMPK α in the liver, we additionally determined SIRT1 and peroxisomal proliferators-activated receptor γ coactivator (PGC-1 α) as the indicators of mitochondrial oxidative function and fuel utilization. SIRT1, SIRT3 and PGC-1 α levels failed to change consistently after a single or multiple load(s) to +9 Gz (Fig. 7A,B). This was confirmed by repeated experiments.

Restraint effect on the molecular markers affected by +9 Gz hypergravity. When a manned spacecraft is exposed to hypergravity stress, astronauts or jetfighters are restrained in position. So, we further assessed the effect of restraint on the parameters examined in the hypergravity model; mice

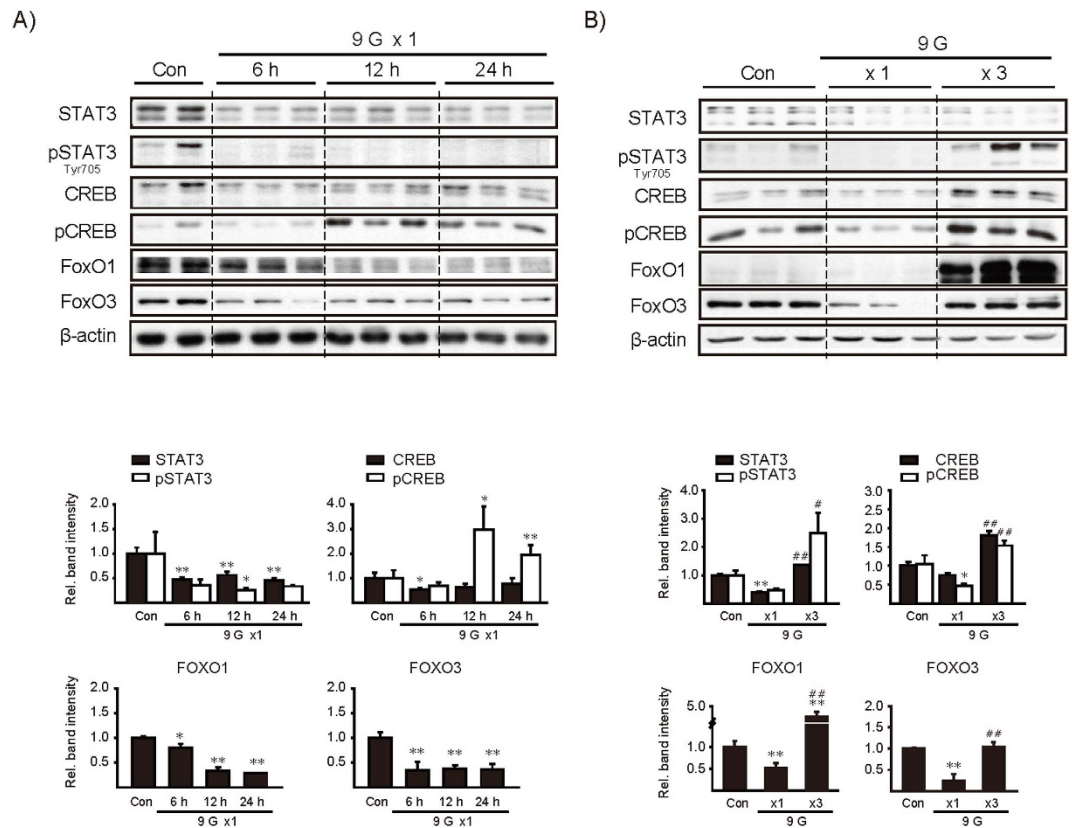


Figure 6. The effects of +9 Gz load(s) on hepatic transcription factors. (A,B) Immunoblottings for major transcription factors in the liver. Mice were treated as described in the panels to Fig. 2. Of six different samples, two or three representative lanes were shown in each group. Data represent the mean \pm S.E (N = 6 each). Statistical significance of the differences was determined as compared to control group (* P < 0.05, ** P < 0.01) or to a single load to +9 Gz (* P < 0.05, ** P < 0.01). Con, control.

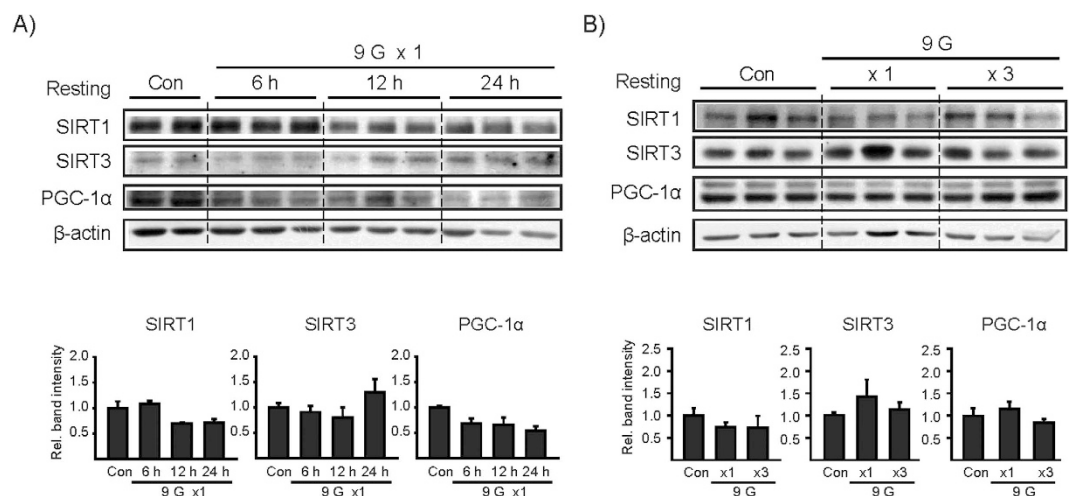


Figure 7. The effects of +9 Gz load(s) on SIRT and PGC-1 α levels. (A,B) Immunoblottings for SIRT1, SIRT3, and PGC-1 α . Mice were treated as described in the panels to Fig. 2. Of six different samples, two or three representative lanes were shown in each group. Data represent the mean \pm S.E (N = 6 each). No statistical significance of the differences was found between each treatment group and control. Con, control.

were placed inside a cylindrical plastic restraint device for 1 h and then subjected to resting for 6 h. In another set, mice were placed in a similar restraint stress for 3 consecutive days. We found that restraint alone did not notably change AMPK α or other molecules of our interest (Fig. 8). In the analyses of

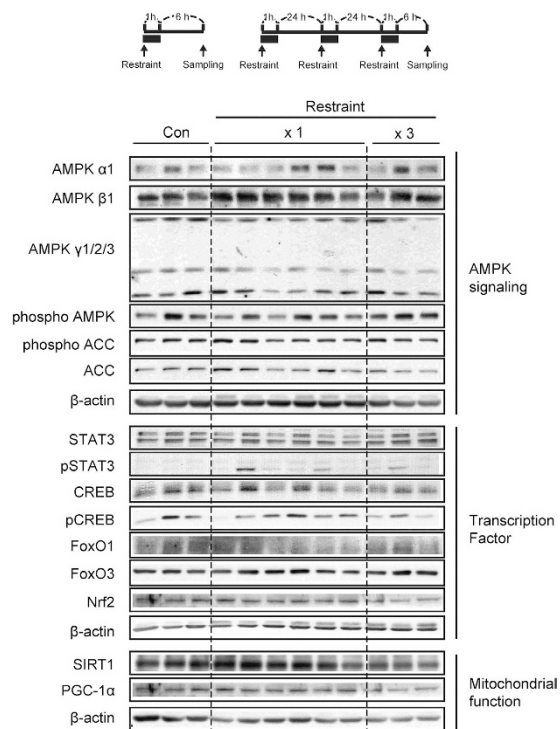


Figure 8. Immunoblottings for hepatic molecules in mice subjected to restraint stress. C57BL/6 mice were exposed to either a single restraint stress (x1) or three consecutive daily stresses (x3), and the liver samples were obtained 6 h after treatment. Of six different samples, three or six representative lanes were shown in each group. Con, control.

transcription factors, STAT3, CREB, FOXOs and Nrf2 levels were also unaffected. In addition, there were no changes in SIRT1 and PGC-1 α . Our results support the notion that a single or multiple restraint(s) of mice (1 h each) has no measurable effect on the levels of AMPK α and other markers affected by +9 Gz hypergravity load(s).

Methods

Experimental animals. Male C57BL/6 mice (8 weeks old) were purchased from Charles River Orient (Seoul, Korea), and housed at $20 \pm 2^\circ\text{C}$ with 12-h light/dark cycles and a relative humidity of $50 \pm 5\%$ (Tecniplast, Varese, Italy) under filtered, pathogen-free air, with food (Purina, Korea) and water available *ad libitum*. Mice were acclimatized for 1 week at the Animal Center for Pharmaceutical Research, Seoul National University. Nrf2 KO mice supplied by RIKEN BioResource Center (Tsukuba, Japan) were bred and maintained. Nrf2 KO C57/BL6 mice were backcrossed with WT C57/BL6 mice for at least 6 months, and only male mice were used for experiments. Moreover, the protocol was approved by the local ethics committee (authorization number SNU-141103-1). Animal experiments were conducted under the guidelines and ethical approvals of the Institutional Animal Use and Care Committee at Seoul National University.

Centrifugation experiment. The mice were exposed to short-term hypergravity at +9 Gz for 1 h using the small animal centrifuge at the Aerospace Medicine Research Center (Cheongju, Korea). The mice were placed inside a cylindrical plastic restraint device that, when mounted in the centrifuge, allowed +Gz to be delivered along the rostrocaudal axis. Once the mice were secured, the restraint device was placed onto the centrifuge. A cage-mounting module was attached at the end of the arm that allowed for one degree of freedom, thereby ensuring that the net gravity field was perpendicular to the floor of the restraint device. The mice were sacrificed at 6, 12 or 24 h after exposure to the indicated hypergravity. In different sets, animals were daily loaded to hypergravity for three days and the tissue samples were obtained 6 h after last load (Fig. 2A). The behavior of mice was monitored with a charge-coupled device camera throughout the centrifugation experiments.

Blood chemistry. Plasma alanine aminotransferase (ALT) activity, aspartate aminotransferase (AST) and glucose contents were analyzed using Spectrum, an automatic blood chemistry analyzer (Abbott Laboratories, Abbott Park, IL, USA).

Hematoxylin and eosin staining. The left lateral lobe of the liver was sliced, and tissue slices were fixed in 10% buffered-neutral formalin for 6 h. The samples were stained with hematoxylin and eosin (H&E).

Immunoblot analysis. Proteins were separated by 7.5% sodium dodecyl sulfate polyacrylamide gel electrophoresis and transferred onto nitrocellulose membrane (Millipore, Bedford, MA). The membrane was blocked with 5% non-fat dried milk in TBST (20 mM Tris-HCl, 150 mM NaCl, and 0.1% Tween 20, pH 7.5) for 1 h, and incubated overnight with each primary antibody at 4°C. After washing with TBST buffer, membranes were incubated with secondary antibodies for 1 h at room temperature. The protein bands were visualized using an ECL chemiluminescence system (Amersham, Buckinghamshire, UK). Equal loading of samples was verified by immunoblotting for β -actin. Band intensities were quantified using Adobe Photoshop CS5 (Adobe Systems, San Jose, CA).

RNA quality check. For the quality control, RNA purity and integrity were evaluated by OD 260/280 ratio, and analyzed by Agilent 2100 Bioanalyzer (Agilent Technologies, Palo Alto, USA).

Affymetrix whole transcript expression arrays methods. The Affymetrix Whole Transcript Expression array process was executed according to the manufacturer's protocol (GeneChip Whole Transcript PLUS reagent Kit). cDNA was synthesized using the GeneChip WT Amplification kit as described by the manufacturer. The sense cDNA was then fragmented and biotin-labeled with TdT (terminal deoxynucleotidyl transferase) using the GeneChip WT Terminal labeling kit. Approximately 5.5 μ g of labeled DNA target was hybridized to the Affymetrix GeneChip Mouse 2.0 ST Array at 45°C for 16 h. Hybridized arrays were washed and stained on a GeneChip Fluidics Station 450 and scanned on a GCS3000 Scanner (Affymetrix).

Raw data preparation and statistical analysis. Raw data were extracted automatically in Affymetrix data extraction protocol using the software provided by Affymetrix GeneChip® Command Console® Software (AGCC). After importing CEL files, the data were summarized and normalized with robust multi-average (RMA) method implemented in Affymetrix® Expression Console™ Software (EC). We exported the result with gene level RMA analysis and performed the differentially expressed gene (DEG) analysis. The comparative analyses between test samples and control samples were carried out using LPE test and fold changes. False discovery rate (FDR) was controlled by adjusting p value using Benjamini-Hochberg algorithm. For a DEG set, hierarchical cluster analysis was done using complete linkage and Euclidean distance as a measure of similarity. All statistical test and visualization of differentially expressed genes was conducted using R statistical language v. 3.0.2. (www.r-project.org).

Data analyses. For animal experiments, data represent the mean \pm S.E. The differences between groups were analyzed using one-tailed Student's t-test. The criterion for statistical significance was set at $P < 0.05$ or $P < 0.01$.

Discussion

An understanding of the biological responses to hypergravity is important to prevent unwanted responses that occur during exposure to hypergravity. In this study, we evaluated the effect of +Gz accelerative gravity, a force applied to the vertical axis from head to foot, on the body in animal models. A new equation created using the reported effects of gravity on mortality vs. masses of animal species enabled us to estimate gravity load in mice which can be extrapolated to humans. Our data obtained from +3 or +9 Gz load seems to reflect the gravity force frequently attained in human situations. We found that hypergravity stress caused injuries in the skeletal muscle or kidney immediately after +3 or +9 Gz load. However, the parameters returned toward normal during resting times. In contrast, +9 Gz hypergravity stress caused marked changes in the liver during the resting time, implying that the liver tissue may be vulnerable to physical or compressional stress progressively.

Alteration of gravity may enhance compressional stress, accompanying disturbances in biological responses and increase of oxidative stress. The liver is a continuous sponge-like parenchymal mass consisting of the interdigitating networks of afferent and efferent vessels; the hepatic vasculature, particularly sinusoids comprising 60% of the liver vascular volume, is featured by high compliance, high capacity and energy metabolism³⁴. In our findings, a load to +9 Gz hypergravity severely affected the levels of molecules associated with energy metabolism, altering blood biochemical indexes representing liver injury. Likewise, a pressure stress elicited by hyper-gravitational force increased apoptotic marker levels in the liver. Serum aminotransferase activities worsened at later time after the compressional stress, indicative of delayed injury of hepatocytes to hypergravity load and intrinsic vulnerability of the liver tissue. Hepatocytes stressed metabolically or hemodynamically (e.g., aged cells) would be more susceptible to hypergravity presumably due to energy shortage and/or hypoxia, which remains to be clarified in the future.

In the hepatic cell, AMPK serves as a sensor for energy homeostasis, responding to the change in the AMP:ATP ratio³⁵. AMPK activation then leads to threonine-172 phosphorylation in the catalytic domain of α subunit, promoting fuel utilization with the inhibition of gluconeogenesis and of glycogen, fatty acid

and cholesterol synthesis. Our data that a load to +9 Gz hypergravity significantly repressed AMPK α subunit (a catalytic subunit α 1/2) 6 h post-treatment represents progressive metabolic disturbances in hepatocytes. A sufficient resting time (i.e., 24 h or longer time) seems to be required for full recovery of hepatocytes from compressional stress. This contention is further supported by the finding that p-AMPK and p-ACC levels were initially lowered and gradually returned toward basal during the resting period. Another important finding of this study is that repetitive exposures of mice to +9 Gz for three days could induce an adaptive capability to overcome hypergravity stress. Moreover, our result supports the concept that recovery of energy-metabolizing capacity may be indispensable for adaptation to hypergravity stress. This was also reflected by the changes in p-AMPK and p-ACC.

The cDNA microarray analyses yielded new and interesting information as to the complex and inter-related biological processes. Of the clusters of genes affected by hypergravity, we placed an emphasis on Nrf2 and its target gene expression, and found that the expression of Nrf2 target genes was repressed 6 h after a load to hypergravity despite no notable change in Nrf2 level, raising the concept that hypergravity stress causes oxidative stress. Moreover, our data support the idea that Nrf2 plays a role in defending the cell from hypergravity-induced compressional stress in association with the recovery of antioxidant capacity. An intriguing finding of our study is that a deficiency of Nrf2 abrogated the adaptive increase of AMPK α elicited by repetitive loads to hypergravity, implying that Nrf2 plays a role in AMPK-dependent ATP production under the condition of hypergravity stress. In a separate study, we discovered the ability of AMPK to regulate Nrf2 trafficking to the nucleus (Joo and Kim *et al.*, manuscript submitted). This event along with the present findings strongly supports the close association between AMPK signaling and Nrf2-target gene expression.

Studies had been done on the effects of microgravity on animals and cells. Exposure of rats to +1.65 G hypergravity from gestational day 8 to 21 may cause oxidative stress on the developing brain³⁶. On the other hand, chronic microgravity exposure to simulated space conditions alters oxidative stress response in mouse fetal fibroblast³⁷. In rat cerebral arteries, microgravity causes mitochondrial dysfunction with increase of mitochondrial reactive oxygen species, and mitochondria-targeted antioxidant promoted recovery of mitochondrial function³⁸. Our finding showed that STAT3, CREB and FoxOs (i.e., transcription factors associated with cell survival and cell cycle control) were markedly inhibited by a load to +9 Gz hypergravity (e.g., production of acute-phase proteins in hepatocytes by IL-6; gp130-IL-6R regulation of STAT3; FoxO1 regulation by IGF-1/PI3K pathway; FoxO3 control of cell cycle arrest and apoptosis; and CREB regulation of FoxO1), and the changes were minimized or abrogated after multiple loads of hypergravity. Of the transcription factors, FoxO1 affects a variety of physiological events including cell proliferation, antioxidant capacity and adaptive stress responses^{39–41}. FoxO1 also controls hepatic gluconeogenesis⁴², sustaining the normal glucose content. FoxO1 levels changed by hypergravity well reflect stress and adaptive responses. SIRT1/3 may control mitochondrial fuel oxidation and lipid homeostasis in association with PGC-1 α ^{43,44}. Our finding that +9 Gz hypergravity load(s) had a minimal effect on SIRT1/3 and PGC-1 α supports the conclusion that hypergravity-induced compressional stress preferentially alters AMPK α level and the signaling pathway.

In conclusion, we showed that a load to +9 Gz hypergravity immediately induced compressional stress on the organs including the liver, skeletal muscle, and kidney, and that this stress progressively caused decreases of AMPK α level, the downstream energy production pathway, and Nrf2-dependent antioxidant gene expression in the liver, presumably deteriorating ATP production and worsening compressional injury of hepatocytes. In addition, our study demonstrated that repetitive preconditioning loads enhanced the adaptive capability of mice to hypergravity stress, as mediated in part by Nrf2-dependent recovery of AMPK pathway.

References

1. Caiozzo, V. J. *et al.* Effect of spaceflight on skeletal muscle: mechanical properties and myosin isoform content of a slow muscle. *J. Appl. Physiol.* **76**, 1764–1773 (1994).
2. Del Signore, A. *et al.* Hippocampal gene expression is modulated by hypergravity. *Eur. J. Neurosci.* **19**, 667–677 (2004).
3. Fitts, R. H. *et al.* Functional and structural adaptations of skeletal muscle to microgravity. *J. Exp. Biol.* **204**, 3201–3208 (2001).
4. Ikawa, T. *et al.* Hypergravity suppresses bone resorption in ovariectomized rats. *Adv Space Res.* **47**, 1214–1224 (2011).
5. Kramer, L. A. *et al.* Orbital and intracranial effects of microgravity: findings at 3-T MR imaging. *Radiology* **263**, 819–827 (2012).
6. Nabavi, N. *et al.* E. Effects of microgravity on osteoclast bone resorption and osteoblast cytoskeletal organization and adhesion. *Bone* **49**, 965–974 (2011).
7. Sanford, G. L. *et al.* Influence of changes in gravity on the response of lung and vascular cells to ischemia/reperfusion *in vitro*. *J. Gravit Physiol.* **6**, P27–28 (1999).
8. Wang, J. *et al.* Simulated microgravity promotes cellular senescence via oxidant stress in rat PC12 cells. *Neurochem. Int.* **55**, 710–716 (2009).
9. Xue, J. H. *et al.* Differential regulation and recovery of intracellular Ca²⁺ in cerebral and small mesenteric arterial smooth muscle cells of simulated microgravity rat. *PLoS one* **6**, e19775 (2011).
10. Fitts, R. H. *et al.* Prolonged space flight-induced alterations in the structure and function of human skeletal muscle fibres. *J. Physiol.* **588**, 3567–3592 (2010).
11. Sandona, D. *et al.* Adaptation of mouse skeletal muscle to long-term microgravity in the MDS mission. *PLoS one* **7**, e33232 (2012).
12. Carpenter, R. D. *et al.* Long-term changes in the density and structure of the human hip and spine after long-duration spaceflight. *Acta Astronaut* **67**, 71–81 (2010).
13. Crestini, A. *et al.* Effects of simulated microgravity on the development and maturation of dissociated cortical neurons. *In Vitro Cell. Dev. Biol. Anim.* **40**, 159–165 (2004).

14. Dememes, D. *et al.* Development of the rat efferent vestibular system on the ground and in microgravity. *Brain Res. Dev. Brain Res.* **128**, 35–44 (2001).
15. Husson, D. *et al.* Differentiation in microgravity of neural and muscle cells of a vertebrate (amphibian). *Adv Space Res.* **22**, 303–308 (1998).
16. Frigeri, A. *et al.* Effect of microgravity on gene expression in mouse brain. *Exp Brain Res.* **191**, 289–300 (2008).
17. Monticone, M. *et al.* Activation of nervous system development genes in bone marrow derived mesenchymal stem cells following spaceflight exposure. *J. Cell. Biochem.* **111**, 442–452 (2010).
18. Wang, N. D. *et al.* The simulated microgravity enhances multipotential differentiation capacity of bone marrow mesenchymal stem cells. *Cytotechnology* **66**, 119–131 (2014).
19. Breaeunig, R. A. *Saturn V launch simulation*, (2010) Available at: www.braeunig.us/apollo/saturnV.htm (Accessed: 10th July 2015).
20. Hirasaka, K. *et al.* Short-term hypergravity does not affect protein-ubiquitination and proliferation in rat L6 myoblastic cells. *Biol. Sci. Space.* **19**, 3–7 (2005).
21. Ciofani, G. *et al.* Hypergravity effects on myoblast proliferation and differentiation. *J. Biosci. Bioeng.* **113**, 258–261 (2012).
22. Genchi, G. G. *et al.* Hypergravity stimulation enhances PC12 neuron-like cell differentiation. *Biomed Res Int.* **2015**, 748121 (2015).
23. Oshima, M. *et al.* Hypergravity induces expression of cyclooxygenase-2 in the heart vessels. *Biochem. Biophys. Res. Commun.* **330**, 928–933 (2005).
24. Gueguinou, N. *et al.* Stress response and humoral immune system alterations related to chronic hypergravity in mice. *Psychoneuroendocrinology* **37**, 137–147 (2012).
25. Oguro, A. *et al.* The molecular chaperone HSP47 rapidly senses gravitational changes in myoblasts. *Genes Cells* **11**, 1253–1265 (2006).
26. Nerstedt, A. *et al.* AMP-activated protein kinase inhibits IL-6-stimulated inflammatory response in human liver cells by suppressing phosphorylation of signal transducer and activator of transcription 3 (STAT3). *Diabetologia* **53**, 2406–2416 (2010).
27. Yun, H. *et al.* AMP-activated protein kinase mediates the antioxidant effects of resveratrol through regulation of the transcription factor FoxO1. *FEBS J.* **281**, 4421–4438 (2014).
28. Kim, A. D. *et al.* Cytoprotective effect of eckol against oxidative stress-induced mitochondrial dysfunction: involvement of the FoxO3a/AMPK pathway. *J. Cell. Biochem.* **115**, 1403–1411 (2014).
29. Lee, J. M. *et al.* AMPK-dependent repression of hepatic gluconeogenesis via disruption of CREB.CRTC2 complex by orphan nuclear receptor small heterodimer partner. *J. Biol. Chem.* **285**, 32182–32191 (2010).
30. Herms, A. *et al.* AMPK activation promotes lipid droplet dispersion on detyrosinated microtubules to increase mitochondrial fatty acid oxidation. *Nat Commun.* **6**, 7176 (2015).
31. Wade, C. E. Responses across the gravity continuum: hypergravity to microgravity. *Adv. Space Biol. Med.* **10**, 225–245 (2005).
32. Gross, D. N. *et al.* The role of FOXO in the regulation of metabolism. *Curr. Diab. Rep.* **9**, 208–214 (2009).
33. Heinrich, P. C. *et al.* Principles of interleukin (IL)-6-type cytokine signalling and its regulation. *Biochem. J.* **374**, 1–22 (2003).
34. Gebhardt, R. *et al.* Liver zonation: Novel aspects of its regulation and its impact on homeostasis. *World J. Gastroenterol.* **20**, 8491–8504 (2014).
35. Yang, Y. M. *et al.* AMPK-associated signaling to bridge the gap between fuel metabolism and hepatocyte viability. *World J. Gastroenterol.* **16**, 3731–3742 (2010).
36. Sajdel-Sulkowska, E. M. *et al.* Potential role of oxidative stress in mediating the effect of altered gravity on the developing rat cerebellum. *Adv Space Res.* **40**, 1414–1420 (2007).
37. Beck, M. *et al.* Chronic exposure to simulated space conditions predominantly affects cytoskeleton remodeling and oxidative stress response in mouse fetal fibroblasts. *Int. J. Mol. Med.* **34**, 606–615 (2014).
38. Zhang, R. *et al.* Simulated microgravity-induced mitochondrial dysfunction in rat cerebral arteries. *FASEB J.* **28**, 2715–2724 (2014).
39. Adachi, M. *et al.* The forkhead transcription factor FoxO1 regulates proliferation and transdifferentiation of hepatic stellate cells. *Gastroenterology* **132**, 1434–1446 (2007).
40. Shao, D. *et al.* A functional interaction between Hippo-YAP signalling and FoxO1 mediates the oxidative stress response. *Nat Commun.* **5**, 3315 (2014).
41. Smith, G. R. *et al.* Modelling the response of FOXO transcription factors to multiple post-translational modifications made by ageing-related signalling pathways. *PLoS one* **5**, e11092 (2010).
42. Choi, D. *et al.* Protein arginine methyltransferase 1 regulates hepatic glucose production in a FoxO1-dependent manner. *Hepatology* **56**, 1546–1556 (2012).
43. Lagouge, M. *et al.* Resveratrol improves mitochondrial function and protects against metabolic disease by activating SIRT1 and PGC-1 α . *Cell* **127**, 1109–1122 (2006).
44. Shin, S. Y. *et al.* SIRT1 activation by methylene blue, a repurposed drug, leads to AMPK-mediated inhibition of steatosis and steatohepatitis. *Eur. J. Pharmacol.* **727**, 115–124 (2014).

Acknowledgments

The authors express sincere thanks to the present and former directors of Korea Air force Aerospace Medicine Research Center, Lt Col. Kang-Chul Huh and Col. Jeongku Lim, for kindly supporting our research. This work was supported by the National Research Foundation of Korea (NRF) grant funded by the Korea government (MSIP) (NRF-2014M1A3A3A02034698).

Author Contributions

S.G.K, C.G.L and S.G.L conceived and designed the experiments. S.G.L, C.G.L and H.M.W performed the experiments. S.G.L, C.G.L, H.M.W and S.G.K analyzed the data. C.S.O and S.W.C assisted the experiments in the aerospace facilities. All authors reviewed the manuscript.

Additional Information

Competing financial interests: The authors declare no competing financial interests.

How to cite this article: Lee, S.G. *et al.* A load of mice to hypergravity causes AMPK α repression with liver injury, which is overcome by preconditioning loads via Nrf2. *Sci. Rep.* **5**, 15643; doi: 10.1038/srep15643 (2015).



This work is licensed under a Creative Commons Attribution 4.0 International License. The images or other third party material in this article are included in the article's Creative Commons license, unless indicated otherwise in the credit line; if the material is not included under the Creative Commons license, users will need to obtain permission from the license holder to reproduce the material. To view a copy of this license, visit <http://creativecommons.org/licenses/by/4.0/>

SCIENTIFIC REPORTS

OPEN **Corrigendum: A load of mice to hypergravity causes AMPK α repression with liver injury, which is overcome by preconditioning loads via Nrf2**

Sang Gil Lee, Chan Gyu Lee, Hong Min Wu, Choong Sik Oh, So Won Chung & Sang Geon Kim

Scientific Reports 5:15643; doi: 10.1038/srep15643; published online 23 October 2015; updated 05 October 2016

This Article contains errors in Figure 5A and Figure 8.

In Figure 5A, the immunoblot for 'Akt' is incorrect.

In Figure 8, the immunoblot for Nrf2 is incorrectly duplicated as PGC-1 α .

The correct Figures 5A and 8 appear below as Figure 1 and Figure 2 respectively.

A)

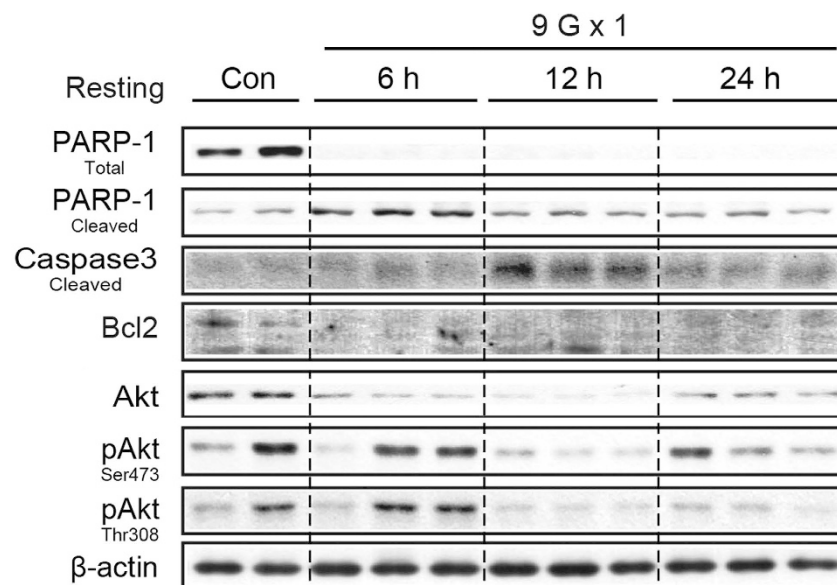


Figure 1.

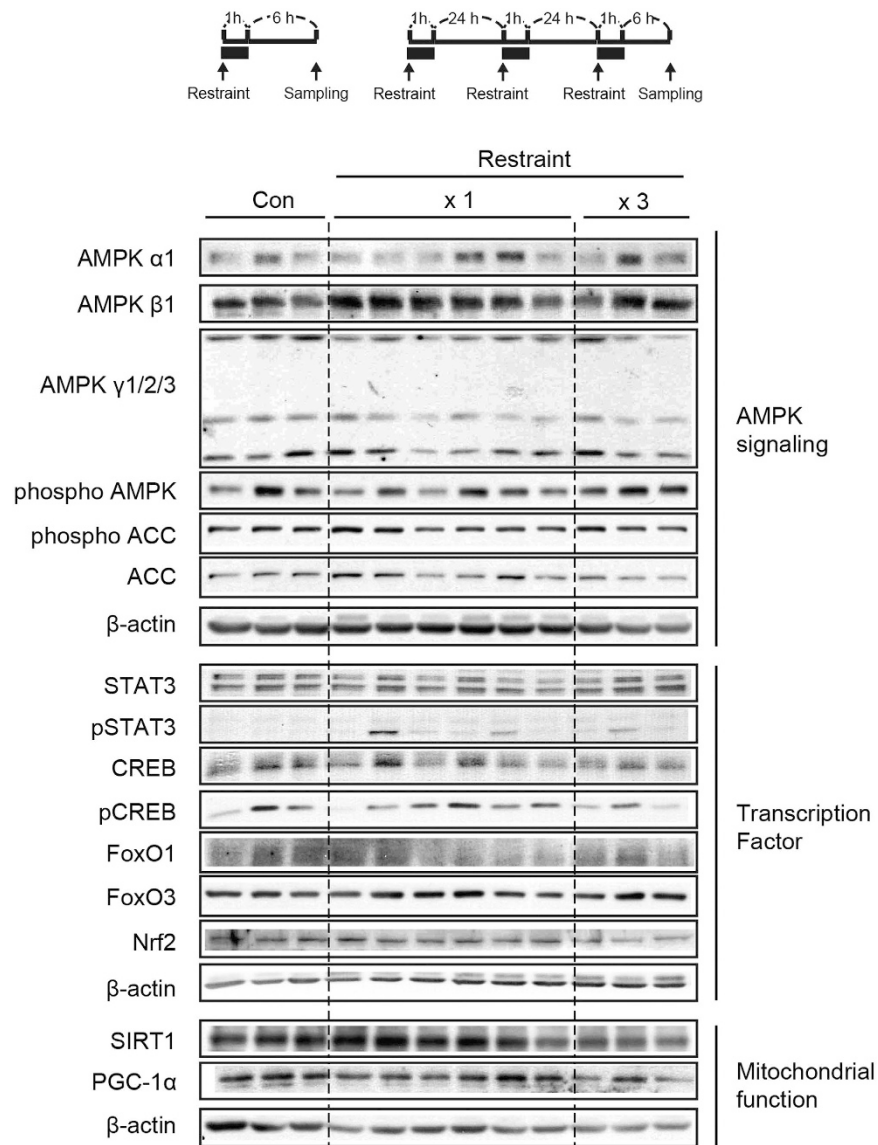



Figure 2.

 This work is licensed under a Creative Commons Attribution 4.0 International License. The images or other third party material in this article are included in the article's Creative Commons license, unless indicated otherwise in the credit line; if the material is not included under the Creative Commons license, users will need to obtain permission from the license holder to reproduce the material. To view a copy of this license, visit <http://creativecommons.org/licenses/by/4.0/>

© The Author(s) 2016