

SCIENTIFIC REPORTS



OPEN

Relationships between the resting-state network and the P₃: Evidence from a scalp EEG study

Received: 19 March 2015
Accepted: 17 September 2015
Published: 12 October 2015

Fali Li¹, Tiejun Liu^{1,2}, Fei Wang¹, He Li¹, Diankun Gong¹, Rui Zhang¹, Yi Jiang¹, Yin Tian³, Daqing Guo^{3,2}, Dezhong Yao^{3,2} & Peng Xu^{1,2}

The P₃ is an important event-related potential that can be used to identify neural activity related to the cognitive processes of the human brain. However, the relationships, especially the functional correlations, between resting-state brain activity and the P₃ have not been well established. In this study, we investigated the relationships between P₃ properties (i.e., amplitude and latency) and resting-state brain networks. The results indicated that P₃ amplitude was significantly correlated with resting-state network topology, and in general, larger P₃ amplitudes could be evoked when the resting-state brain network was more efficient. However, no significant relationships were found for the corresponding P₃ latency. Additionally, the long-range connections between the prefrontal/ frontal and parietal/occipital brain regions, which represent the synchronous activity of these areas, were functionally related to the P₃ parameters, especially P₃ amplitude. The findings of the current study may help us better understand inter-subject variation in the P₃, which may be instructive for clinical diagnosis, cognitive neuroscience studies, and potential subject selection for brain-computer interface applications.

The P₃ is one of the most important event-related potentials (ERPs)¹ that can be elicited by the oddball paradigm. In the traditional oddball paradigm, two types of stimuli, target and standard stimuli, are presented to subjects in a random order. During the experimental task, the subject is required to focus his or her attention and to discriminate between the presented stimuli by reacting to the target stimuli (counting or pressing a button) while not responding to the standard stimuli. To evoke a strong P₃, the target stimulus probability should typically be lower than 20% because target probability strongly influences P₃ amplitude and latency^{2,3}. P₃ amplitude is defined as the largest positive peak of the ERP waveform within the time window of 300–500 ms, and the corresponding latency is defined as the time interval from stimulus onset to the point of maximum positive amplitude within the same time window⁴. P₃ potentials can reflect various cognition-related brain functions, such as attention allocations and working memory^{5–7}. Thus, the P₃ can be regarded as a potential biomarker to evaluate a subject's processing capacity in an experimental task; accordingly, the P₃ is widely used in different applications such as clinical diagnosis^{4,8,9}, cognitive neuroscience, and brain-computer interfaces (BCIs)^{10,11}.

However, P₃ amplitude and latency vary among subjects. An earlier report by Ou *et al.* revealed that a larger P₃ amplitude was acquired over different brain regions from poor navigators in driving tasks¹². A BCI study based on the P₃ also indicated that there was cross-subject variability in the P₃ amplitude based on performance¹³. Thus, it is important to identify the underlying neural mechanisms that can account for the variation in P₃ potentials among humans, and various studies have been conducted with this aim^{14–16}. Studies that utilized electroencephalography (EEG), functional magnetic resonance imaging

¹Key Laboratory for NeuroInformation of Ministry of Education, School of Life Science and Technology, University of Electronic Science and Technology of China, Chengdu, 610054, China. ²Center for Information in BioMedicine, University of Electronic Science and Technology of China, Chengdu, 610054, China. ³College of Bio-information, ChongQing University of Posts and Telecommunications, Chongqing, 400065, China. Correspondence and requests for materials should be addressed to P.X. (email: xupeng@uestc.edu.cn)

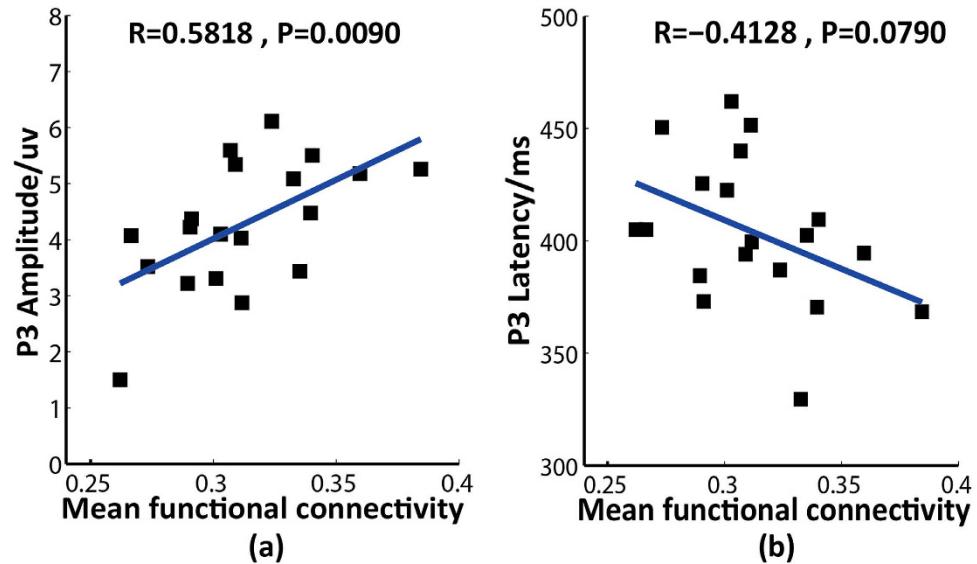


Figure 1. Relationships between the mean functional connectivity and P3 amplitude/latency. (a) The mean functional connectivity vs. P3 amplitude. (b) The mean functional connectivity vs. P3 latency. In each sub-figure, the blue line is the fitted curve; R indicates the correlation coefficient, and P indicates statistical significance.

(fMRI) or their combination all showed that the P3 was correlated with the activity of multiple brain cortices^{14,16–18}. An experiment conducted by Horowitz, *et al.* also reported the considerable contribution of multiple regions (i.e., the thalamus and insula) to P3 amplitude based on the close relationships between P3 amplitude and changes in blood oxygenation level-dependent signals¹⁵.

The majority of previous studies have focused on focal regions where the P3 is elicited; few studies have considered the interactions among multiple brain regions^{14,19}. The brain functions as a complex network, with interactions among various brain cortices. Cognition-related brain functions, such as attention and working memory, involve interactions between specialized brain regions that are spatially distributed but functionally linked^{20,21}. In recent decades, network analysis has become an increasingly important part of the study of human brain function. Brain network efficiency is strongly related to human intelligence²². The dynamic interactions of distributed brain areas in large-scale networks, rather than the isolated operations of these regions, greatly contribute to human cognition²³. Studies of P3 topology have also demonstrated the importance of various neural networks for the P3²⁴.

However, these studies have mainly concentrated on task-related networks without considering the relationship between the resting-state network and the P3. During the resting state, the brain is still activated; this pattern of activation is characterized by a specific network mode²⁵, and some of the related neuronal activity is associated with specific brain functions^{26–29}, as confirmed by convergent evidence from various resting-state-network-based studies^{30,31}. Similar to the relationship between background processing networks and steady-state visual evoked potentials (SSVEPs)^{32,33}, resting-state brain activity is also correlated with the P3^{34–36}. Although the findings from three related experiments conducted by Polich, which concentrated on the relationship between EEG parameters (spectral power and mean frequency) and P3 properties, consistently demonstrated that scalp EEG variations significantly contributed to individual variations in the P3³⁵, the related resting-state network analysis has rarely been considered^{34,36,37}. Thus, in the current study, we investigated the relationships between the resting-state network and the P3 to deepen our understanding of the P3.

Results

P3 amplitude and latency. P3 amplitude and latency varied across subjects, with a mean P3 amplitude of $4.27 \pm 1.14 \mu\text{V}$ and a mean P3 latency of $401.44 \pm 34.16 \text{ ms}$.

When the calculations of P3 amplitude and latency were completed, Pearson's correlation was used to compare P3 amplitude with the corresponding latency. The correlation analysis indicated that there was an insignificant negative relationship between P3 amplitude and the corresponding latency ($r = -0.22$, $p > 0.05$).

The relationships between P3 amplitude/latency and mean functional connectivity (MFC). The MFC reflects the synchronization level of brain activity. The relationships between MFC and the P3 properties are shown in Fig. 1. The MFC was positively correlated with P3 amplitude ($r = 0.582$, $p < 0.01$) but was insignificantly negatively correlated with P3 latency ($r = -0.413$, $p > 0.05$).

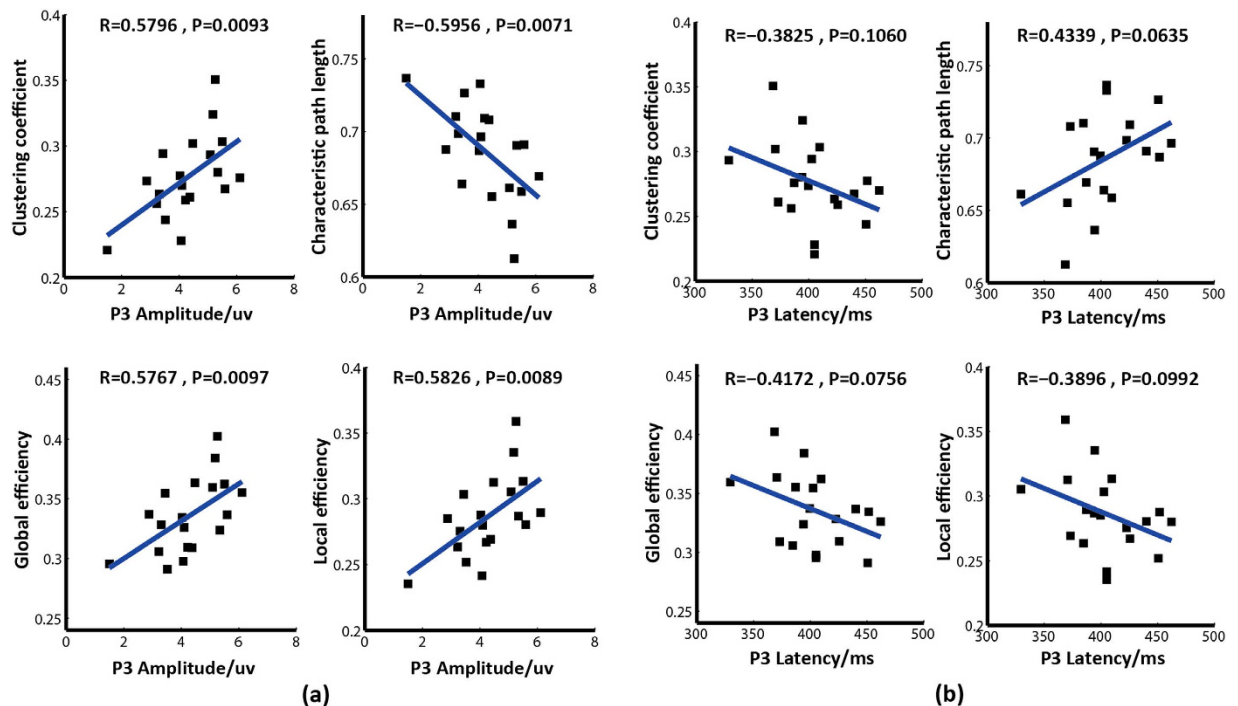


Figure 2. Relationships between the network properties and P3 amplitude/latency. (a) Correlations between the resting-state network properties and P3 amplitude. (b) Correlations between the resting-state network properties and P3 latency. In each sub-figure, the blue line is the fitted curve; R indicates the correlation coefficient, and P indicates statistical significance.

The relationships between P3 amplitude/latency and resting-state network properties. The clustering coefficient (C), global efficiency (Ge), local efficiency (Le), and characteristic path length (L) are four network properties that depict ability of the resting-state network to process and transfer information. The relationships between the four network properties and the P3 properties are shown in Fig. 2. The scatter plots in Fig. 2 indicate that the C , Ge , and Le were significantly positively correlated with P3 amplitude ($p < 0.01$). In contrast, the L was negatively correlated with P3 amplitude ($p < 0.01$). However, the network properties exhibited insignificant opposite relationships with the corresponding P3 latency ($p > 0.05$) that were in the opposite direction of the relationships between the network properties and P3 amplitude.

Edge strength represents the exchange of information between two nodes. To further determine which node linkages affected the P3, the correlations between the P3 properties and each network edge were calculated. The spatial distribution of the edges that were significantly correlated ($p < 0.01$) with P3 amplitude and latency is provided in Fig. 3.

Discussion

Various studies have demonstrated that the P3 involves multiple brain areas, including loci in the temporal, frontal, and parietal lobes^{4,16,24,38}. Constructed networks containing these regions have been found to be correlated with higher-order cognitive processes, such as attention, intelligence, and working memory, and simultaneous interactions between these regions contribute to the P3^{4,39}. People with cognitive deficits due to mental and neurological diseases showed longer P3 latencies and smaller P3 amplitudes⁴⁰. Lesions to the grey and white matter of the frontal and temporo-parietal junction due to hazardous substances resulted in P3 amplitude abnormalities^{17,18}. These existing studies converge to suggest that the P3 represents a complex summation of activity from the interaction of multiple brain regions, particularly the association areas of the cerebral cortex^{24,41}. This is consistent with the recent finding that multiple levels of cognitive processes were modulated by the patterns of brain networks that dynamically shifted between integration and separation across multiple network nodes^{42–44}. Moreover, other studies have also demonstrated strong correlations between the resting-state network and several physiological behaviors, including strategy choices²⁷, reaction time in Go/No-go tasks²⁹, and SSVEPs³². In the current study, we assumed that the P3 parameters and the network properties of the constructed networks could reflect the neural mechanisms of cognitive processing from different aspects, and these networks and the P3 might be strongly related. Therefore, we examined the potential relationships between the P3 and resting-state EEG networks and aimed to identify the underlying neural mechanism of the P3 based on the resting-state network.

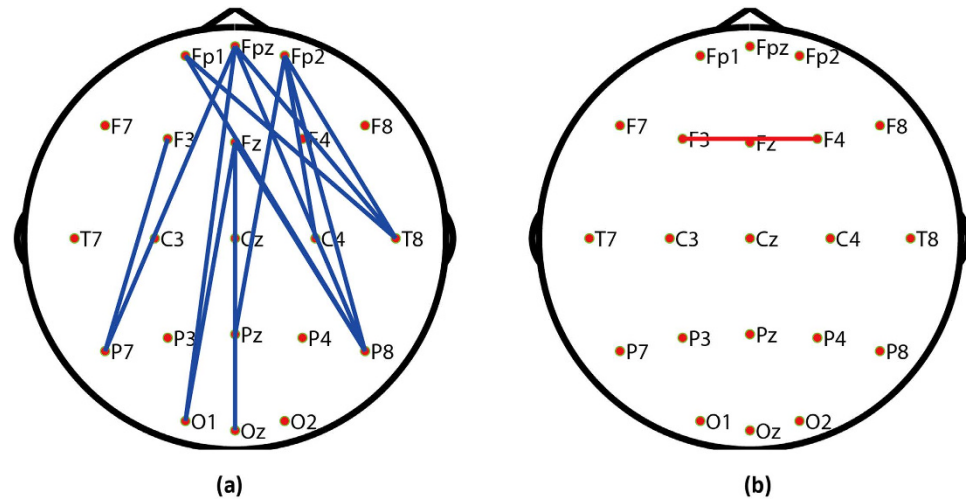


Figure 3. Topography of the edges whose strengths were significantly related to P3 amplitude and the corresponding latency. (a) Edges that were significantly correlated with P3 amplitude ($p < 0.01$). (b) Edges that were significantly correlated with P3 latency ($p < 0.01$). In each sub-figure, blue edges indicate positive correlations between two variables, and red edges represent negative correlations between two variables.

P3 amplitude and latency varied widely across subjects. Additionally, P3 amplitude was insignificantly negatively correlated with the corresponding latency across all subjects ($p > 0.05$). In our study, P3 amplitude and latency were extracted from five electrodes (CPz, CP1, CP2, Cz, and Pz) that were close to the parietal region. P3 amplitude and latency represent the strength and timing of cognitive processing, respectively^{6,45}. Specifically, P3 amplitude is correlated with the amount of attentional resources devoted to a specific task, while P3 latency is regarded as an indicator of brain information processing efficiency⁴⁶. A shorter P3 latency indicates increased cognitive processing efficiency, which would result in increased P3 amplitude⁴⁷. Compared with P3 amplitude, which was estimated using an average value to reduce the influence of noise, P3 latency is more likely to be influenced by noise, which results in an inaccurate estimation. Therefore, the negative relationship between P3 amplitude and the corresponding latency was not significant. And the inaccurate estimation of P3 latency could also account for the finding that P3 latency was insignificantly negatively correlated with the resting-state network properties.

Figure 1 demonstrates that the synchrony of the resting-state brain is functionally related to a strong and efficient P3, especially P3 amplitude. The increased *MFC* indicated that the related brain areas were closely linked, which may have resulted in increased efficiency of information processing and transfer for higher-order cognitive functions.

The scatter plots in Fig. 2 indicate that the increased P3 amplitude was accompanied by an increased *C*, *Ge*, and *Le* as well as a shorter *L*. The corresponding relationships with P3 latency were the opposite of those with P3 amplitude and were not significant ($p > 0.05$). Because an increased *C*, *Ge*, and *Le* as well as a shorter *L* represented an increase in the efficiency of information processing in our brain network, the relationships in Fig. 2 indicate that an efficient resting-state network corresponded to a strong P3. The P3 has been regarded as a biomarker for higher-order cognitive processes such as attention, working memory, and intelligence, and these functions are also closely related to network topologies^{22,23}. Because no external stimulus is imposed, the resting-state brain network can reflect the fundamental linkage structure of related areas, which determines whether the network can efficiently process information. In addition, higher-order cognition involves complex information processing. Thus, when a resting-state network is highly efficient, it can potentially provide more efficient information processing during a task, which results in a P3 with a strong amplitude and short latency.

As shown in Fig. 3, the edges whose strengths were significantly correlated with P3 amplitude were mainly the long-range connections between the prefrontal/frontal cortex and parietal/occipital region (Fig. 3(a)); in contrast, very few edges were strongly correlated with P3 latency (Fig. 3(b)). The P3 results from cognition-related brain information processing, such as attention, intelligence, and working memory, which require the interaction among large-scale brain areas^{23,48}. Studies have demonstrated that synchronization between anterior and posterior regions plays an important role in information processing and transfer in cognitive tasks⁴⁹, e.g., studies of both rats and humans have consistently demonstrated that long-range connections between frontal and occipital regions facilitate the elicitation of SSVEPs^{32,33}. Even in the non-task-related resting state, prefrontal, frontal, and occipital areas were still recruited by some specific cognitive processes^{50,51}. The frontal and parietal cortices were shown to be crucial for top-down/bottom-up attentional control⁵², and working memory also required the interaction of the prefrontal and parietal cortices⁵³. Additionally, in a study of the origins of the P3 based on source separation using source localization methods, Zhang *et al.* reported the contribution of synchronized brain

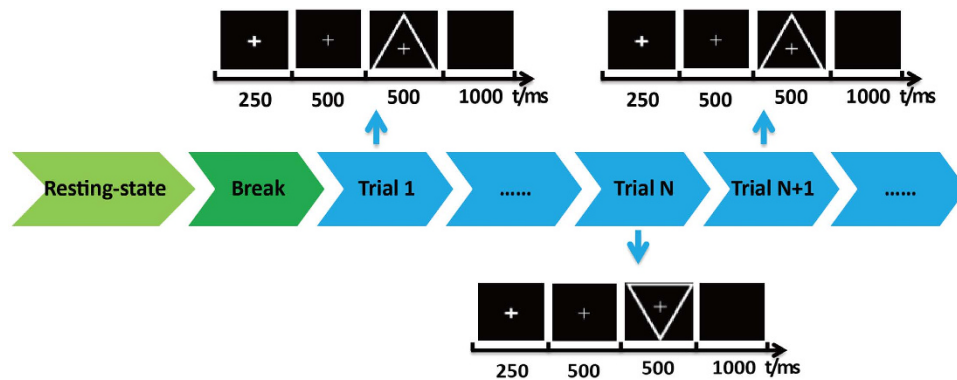


Figure 4. Experimental protocol of the resting-state and experimental tasks.

activity between the anterior and posterior brain regions to the generation of the P3²⁴. Additionally, the importance of these long-range connections between the prefrontal/frontal cortex and parietal/occipital region for the P3 was also demonstrated by the significant reduction in P3 amplitude of frontal-lobe lesioned patients²⁰.

Another finding of our study was that although consistent results were identified for the relationships between the network indexes (network properties, edge strength, and *MFC*) and the two P3 properties (amplitude and latency), differences remained for the two P3 properties. For instance, P3 amplitude was stably and strongly correlated with the resting-state network, while P3 latency was not. The insignificant correlation found for P3 latency was mainly attributed to inaccurate estimation because the averaging strategy was difficult to apply to extract the latency in the experimental situation.

The aim of this study was to investigate the relationships between resting-state network properties and the P3 to identify the neural mechanisms of the P3 from the perspective of resting-state network. The efficiency of the resting-state brain network was functionally related to the P3 parameters, especially P3 amplitude. Additionally, the prefrontal/frontal and parietal/occipital brain regions and their long-range connections played crucial roles in the generation of the P3. However, because the current study utilized an undirected network analysis, it was not possible to definitively demonstrate the direction of information flow among the relevant brain areas or the causality between the P3 and the resting-state network. In the future, we will utilize causal analyses, such as Granger causality, partial directed coherence, or dynamic causality models, to construct directed networks. Another limitation of the current study is that the subjects were all male, and gender differences may have influenced the findings to some degree; therefore, gender differences should be considered in future work.

Methods

This experiment was approved by the Institution Research Ethics Board of the Key Laboratory of NeuroInformation of Ministry of Education at University of Electronic Science and Technology of China (UESTC). The methods were also performed according to the guidelines approved by the Institutional Review Board of the Key Laboratory of NeuroInformation of Ministry of Education at UESTC. All participants who took part in our experiment provided written informed consent before the experiment.

Participants. Twenty-three healthy postgraduates participated in this experiment after providing written informed content. Four participants were discarded from the study because of the failure to acquire reliable resting-state or task-related data without many artifacts. The remaining 19 subjects were right-handed males. The age range was 22–27 years. None of the subjects had used medication, and none of the subjects had a personal or family history of psychiatric or neurological disease.

Experimental procedures. The subjects were instructed to remain relaxed, to refrain from extensive head motion, and to not move their body during the task. Data recording was initiated with a four-minute resting-state EEG while the subjects' eyes were closed. After a one-minute break, the subjects performed the P3 task. When the experimental task was completed, the subjects were required to verbally state the number of target stimuli they counted.

The detailed procedures of the experimental task are illustrated in Fig. 4; four minutes of resting-state data were recorded prior to the P3 task, followed by a 1-minute break. Then, the task to discriminate between the target/standard stimuli was conducted. At the beginning of each trial, all subjects were asked to fixate on the center of the computer monitor. A bold cross then appeared, which served as a cue for the subjects to concentrate their attention on the monitor without moving their eyes. After 250 ms, a thin cross appeared, informing the subjects a stimulus would subsequently appear. The thin cross was presented for 500 ms, and then a target or standard stimulus was presented for 500 ms. The subjects were asked to pay attention to and count the number of target stimuli and to not react to the standard

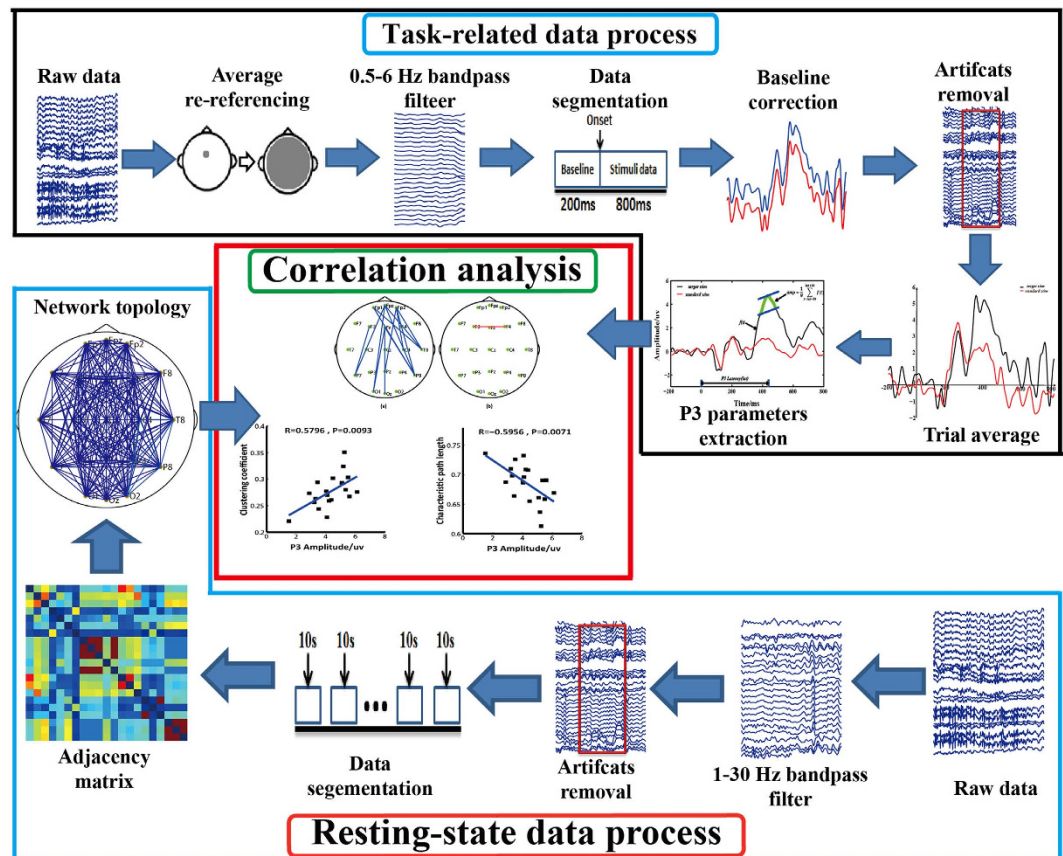


Figure 5. Analysis procedure of the task-related and resting-state data. P3 amplitude and latency were extracted from the task-related data, whereas the network topologies were calculated from the resting-state data. A correlation analysis was subsequently performed.

stimuli. The target stimuli consisted of downward-oriented triangles with thin crosses in their centers, and the standard stimuli consisted of upward-oriented triangles with thin crosses in their centers. After a 1,000-ms break, the next trial was initiated. The target stimuli were randomly presented 20% of the time. The experimental task consisted of 150 trials, with approximately 120 standard stimuli presented and 30 target stimuli presented.

EEG data recording. The EEG data were recorded with 64 Ag/AgCl electrodes, which were positioned according to the extended 10/20 system and digitized with a sampling rate of 500 Hz (Brain Products GmbH). The FCz and AFz electrodes served as the reference and ground, respectively. Vertical and horizontal electrooculogram (EOG) data were recorded from two additional channels to monitor eye movements. The impedance for all electrodes was maintained below 5 K Ω , and the online filter band was 0.01–100 Hz.

EEG data analysis. The EEG recordings consisted of resting-state and task-related EEGs. The aim of the task-related EEGs was to reliably estimate the amplitude and latency of the P3, whereas the resting state was used to build the corresponding brain network. Therefore, the EEG data analyses consisted of the analysis of both the P3 waveform and the resting-state EEG data. The corresponding analysis was carried out using Matlab 2014a (The MathWorks Inc.), and the analysis procedure is depicted in Fig. 5. Detailed information regarding the data processing is presented in the following sections.

Extraction of P3 amplitude and latency. For the task-related EEGs, the pre-processing included average re-referencing, 0.5- to 6-Hz bandpass filtering⁵⁴, data segmentation, baseline correction, and the exclusion of artifact-containing trials ($\pm 75 \mu\text{V}$ was the threshold for ocular artifacts). After pre-processing, an average for the two types of ERPs (i.e., standard and target) was obtained according to the labels for each subject. P3 amplitude and latency were subsequently estimated using the averaged target ERP. To obtain a reliable estimate of P3 amplitude and latency, five electrodes (i.e., CPz, CP1, CP2, Cz, and Pz) that were located in posterior areas and that consistently exhibited visually obvious P3s were selected. Considering the effect of noise, P3 amplitude was defined as the average amplitude in the time window ± 50 ms, with the largest positive P3 peak at the center; the corresponding latency was the time interval

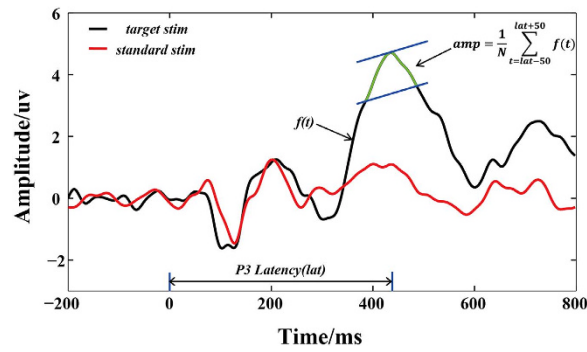


Figure 6. Definitions of P3 amplitude and the corresponding latency. The P3 amplitude represents the mean value of 51 sample points, whereas the P3 latency represents the time interval between stimulus onset and the largest positive P3 peak.

between stimulus onset and the largest positive P3 peak. The method used to determine of P3 amplitude and latency is illustrated in Fig. 6.

For each subject, the corresponding P3 amplitudes and latencies were estimated for electrodes CPz, CP1, CP2, Cz, and Pz, and the averaged values across the five electrodes were treated as the P3 amplitude and latency for each individual subject.

Resting-state network analysis. *Adjacency (connectivity) matrix estimation.* To reduce the effect of volume conduction, the 21 canonical electrodes of the 10–20 system were selected from the 64 electrodes to construct the brain network⁵⁵.

The eyes-closed, resting-state EEG signals were bandpass filtered within 1–30 Hz and continuously divided into 10-second long segments. The segments were then visually checked to remove those with ocular or head movement artifacts. Approximately 10 segments were further analyzed for each subject.

Based on the 10-second long segments, the coherence (*Coh*) was used as a measure of the interactions between two electrodes. *Coh* is the most commonly used method of analyzing cooperative, synchrony-defined cortical neuronal assemblies, and represents the linear relationship at a specific frequency between two signals, $x(t)$ and $y(t)$, based on their cross-spectrum⁵⁶. *Coh* is expressed as follows:

$$C_{XY}(f) = \frac{|P_{XY}(f)|^2}{P_{XX}(f)P_{YY}(f)} \quad (1)$$

where $P_{XY}(f)$ is the cross-spectrum of $x(t)$ and $y(t)$ at frequency f , and $P_{xx}(f)$ and $P_{yy}(f)$ indicate the auto spectrum at frequency f , as estimated from the Welch-based spectrum. Based on the frequency-dependent *Coh*, $C_{XY}(f)$, the edge linkages were estimated by averaging the *Coh* strength within the whole frequency band. Following the calculation of the paired *Coh* between each pair of 21 electrodes, the 21×21 weighted adjacency (connectivity) matrix was constructed to represent the interactions among the 21 nodes for each segment of each individual subject. The adjacency (connectivity) matrices were then averaged across segments to achieve the final adjacency matrix for each subject. Finally, the brain network was constructed based on the 21×21 weighted adjacency (connectivity) matrix using the corresponding *Coh* as the edge linkage, w_{ij} , between two nodes, i and j .

Network properties. After the weighted network was constructed, the related resting-state network indexes were calculated using graph theories.

Let w_{ij} represent the connection strength between node i and node j , d_{ij} represent the L between node i and node j , N represent the node number, and Θ represent the set of all nodes of a resting-state network.

C is defined as the fraction of triangles around an individual network node, and Le is defined as the average efficiency of the local subgraphs. They both relate to the estimation of the potential for functional segregation between brain areas. Therefore, they consistently reflect the local information processing capacity of human brain networks and can be defined as follows:

$$C = \frac{1}{N} \sum_{i \in \Theta} \frac{\sum_{j, l \in \Theta} (w_{ij} w_{il} w_{jl})^{1/3}}{\sum_{j \in \Theta} w_{ij} (\sum_{j \in \Theta} w_{ij} - 1)} \quad (2)$$

$$Le = \frac{1}{N} \sum_{i \in \Theta} \frac{\sum_{j, l \in \Theta, j \neq i} \left(w_{ij} w_{il} [d_{jl}(\Theta_i)]^{-1} \right)^{1/3}}{\sum_{j \in \Theta} w_{ij} (\sum_{j \in \Theta} w_{ij} - 1)} \quad (3)$$

Ge is defined as the average efficiency of the related brain network, and L is defined as the mean value of the shortest path length between all pairs of network nodes. Both are applied to estimate the potential for functional integration between brain regions. Thus, they consistently represent the efficiency of global information processing of human brain networks, and are calculated as follows:

$$Ge = \frac{1}{N} \sum_{i \in \Theta} \frac{\sum_{j \in \Theta, j \neq i} d_{ij}^{-1}}{N - 1} \quad (4)$$

$$L = \frac{1}{N} \sum_{i \in \Theta} L_i = \frac{1}{N} \sum_{i \in \Theta} \frac{\sum_{j \in \Theta, j \neq i} d_{ij}}{N - 1} \quad (5)$$

The MFC is related to the mean value of all of the existing connections between each pair of nodes, which was simultaneously defined as

$$MFC = \frac{1}{N \times (N-1)} \sum_{i, j \in \Theta, i \neq j} w_{ij} \quad (6)$$

Previous studies provide details regarding the graph analysis⁵⁷.

Correlation analysis between P3 properties and network properties. Pearson's correlation analysis was applied to the P3 properties and the resting-state EEG network properties to identify potential relationships across subjects³³.

References

- Sutton, S., Braren, M., Zubin, J. & John, E. Evoked-potential correlates of stimulus uncertainty. *Science* **150**, 1187–1188 (1965).
- Polich, J. Probability and inter-stimulus interval effects on the P300 from auditory stimuli. *International journal of psychophysiology: official journal of the International Organization of Psychophysiology* **10**, 163–170 (1990).
- Polich, J. & Margala, C. P300 and probability: comparison of oddball and single-stimulus paradigms. *International journal of psychophysiology: official journal of the International Organization of Psychophysiology* **25**, 169–176 (1997).
- Polich, J. Updating P300: an integrative theory of P3a and P3b. *Clinical neurophysiology: official journal of the International Federation of Clinical Neurophysiology* **118**, 2128–2148 (2007).
- Picton, T. W. The P300 wave of the human event-related potential. *J Clin Neurophysiol* **9**, 456–479 (1992).
- Kok, A. On the utility of P3 amplitude as a measure of processing capacity. *Psychophysiology* **38**, 557–577 (2001).
- Rutiku, R., Martin, M., Bachmann, T. & Aru, J. Does the P300 reflect conscious perception or its consequences? *Neuroscience* **298**, 180–189 (2015).
- Turetsky, B. I. *et al.* The utility of P300 as a schizophrenia endophenotype and predictive biomarker: clinical and socio-demographic modulators in COGS-2. *Schizophr Res* **163**, 53–62 (2015).
- Howe, A. S., Bani-Fatemi, A. & De Luca, V. The clinical utility of the auditory P300 latency subcomponent event-related potential in preclinical diagnosis of patients with mild cognitive impairment and Alzheimer's disease. *Brain Cognition* **86**, 64–74 (2014).
- Sellers, E. W. & Donchin, E. A P300-based brain-computer interface: initial tests by ALS patients. *Clinical neurophysiology: official journal of the International Federation of Clinical Neurophysiology* **117**, 538–548 (2006).
- Nijboer, F. *et al.* A P300-based brain-computer interface for people with amyotrophic lateral sclerosis. *Clinical neurophysiology: official journal of the International Federation of Clinical Neurophysiology* **119**, 1909–1916 (2008).
- Ou, B., Wu, C., Zhao, G. & Wu, J. P300 amplitude reflects individual differences of navigation performance in a driving task. *Int J Ind Ergonom* **42**, 8–16 (2012).
- Piccione, F. *et al.* P300-based brain computer interface: reliability and performance in healthy and paralysed participants. *Clinical neurophysiology: official journal of the International Federation of Clinical Neurophysiology* **117**, 531–537 (2006).
- Pfabisan, D. M. *et al.* P300 amplitude variation is related to ventral striatum BOLD response during gain and loss anticipation: an EEG and fMRI experiment. *Neuroimage* **96**, 12–21 (2014).
- Horowitz, S. G., Skudlarski, P. & Gore, J. C. Correlations and dissociations between BOLD signal and P300 amplitude in an auditory oddball task: a parametric approach to combining fMRI and ERP. *Magn Reson Imaging* **20**, 319–325 (2002).
- Chen, C., Syue, K., Li, K. & Yeh, S. Neuronal Correlates of a Virtual-Reality-Based Passive Sensory P300 Network. *PLoS one* **9**, e112228 (2014).
- Fusar-Poli, P. *et al.* Gray matter alterations related to P300 abnormalities in subjects at high risk for psychosis: longitudinal MRI-EEG study. *Neuroimage* **55**, 320–328 (2011).
- Fusar-Poli, P. *et al.* White matter alterations related to P300 abnormalities in individuals at high risk for psychosis: an MRI-EEG study. *J Psychiatr Neurosci* **36**, 239 (2011).
- Linden, D. E. The p300: where in the brain is it produced and what does it tell us? *The Neuroscientist: a review journal bringing neurobiology, neurology and psychiatry* **11**, 563–576 (2005).
- Daffner, K. *et al.* Frontal and parietal components of a cerebral network mediating voluntary attention to novel events. *J Cognitive Neurosci* **15**, 294–313 (2003).
- Li, L., Gratton, C., Yao, D. & Knight, R. T. Role of frontal and parietal cortices in the control of bottom-up and top-down attention in humans. *Brain research* **1344**, 173–184 (2010).
- Li, Y. *et al.* Brain anatomical network and intelligence. *PLoS Comput Biol* **5**, e1000395 (2009).
- Bressler, S. L. & Menon, V. Large-scale brain networks in cognition: emerging methods and principles. *Trends Cogn Sci* **14**, 277–290 (2010).

24. Zhang, Y., Tang, A. C. & Zhou, X. Synchronized network activity as the origin of a P300 component in a facial attractiveness judgment task. *Psychophysiology* **51**, 285–289 (2014).
25. Raichle, M. E. & Snyder, A. Z. A default mode of brain function: a brief history of an evolving idea. *Neuroimage* **37**, 1083–1090 (2007).
26. Ramos-Loyo, J., Gonzalez-Garrido, A. A., Amezcua, C. & Guevara, M. A. Relationship between resting alpha activity and the ERPs obtained during a highly demanding selective attention task. *International journal of psychophysiology: official journal of the International Organization of Psychophysiology* **54**, 251–262 (2004).
27. Kounios, J. *et al.* The origins of insight in resting-state brain activity. *Neuropsychologia* **46**, 281–291 (2008).
28. Nierhaus, T., Schön, T., Becker, R., Ritter, P. & Villringer, A. Background and evoked activity and their interaction in the human brain. *Magn Reson Imaging* **27**, 1140–1150 (2009).
29. Zhou, G. *et al.* Interindividual reaction time variability is related to resting-state network topology: an electroencephalogram study. *Neuroscience* **202**, 276–282 (2012).
30. Heine, L. *et al.* Resting state networks and consciousness: alterations of multiple resting state network connectivity in physiological, pharmacological, and pathological consciousness states. *Front Psychol* **3**, 1–12 (2012).
31. Zhang, S. *et al.* Resting-state connectivity in the default mode network and insula during experimental low back pain. *NRR* **9**, 135 (2014).
32. Xu, P. *et al.* Cortical network properties revealed by SSVEP in anesthetized rats. *Sci Rep-UK* **3**, 1–11 (2013).
33. Zhang, Y., Xu, P., Huang, Y., Cheng, K. & Yao, D. SSVEP response is related to functional brain network topology entrained by the flickering stimulus. *PLoS one* **8**, e72654 (2013).
34. Intriligator, J. & Polich, J. On the relationship between background EEG and the P300 event-related potential. *Biol Psychol* **37**, 207–218 (1994).
35. Polich, J. On the relationship between EEG and P300: individual differences, aging, and ultradian rhythms. *International journal of psychophysiology: official journal of the International Organization of Psychophysiology* **26**, 299–317 (1997).
36. Intriligator, J. & Polich, J. On the relationship between EEG and ERP variability. *International journal of psychophysiology: official journal of the International Organization of Psychophysiology* **20**, 59–74 (1995).
37. Basar, E., Basar-Eroglu, C., Rosen, B. & Schütt, A. A new approach to endogenous event-related potentials in man: relation between EEG and P300-wave. *Int J Neurosci* **24**, 1–21 (1984).
38. McCarley, R. W. *et al.* Association between smaller left posterior superior temporal gyrus volume on magnetic resonance imaging and smaller left temporal P300 amplitude in first-episode schizophrenia. *Arch Gen Psychiat* **59**, 321–331 (2002).
39. Tian, Y., Liang, S. & Yao, D. Attentional orienting and response inhibition: insights from spatial-temporal neuroimaging. *Neurosci Bull* **30**, 141–152 (2014).
40. Honig, L. S., Ramsay, R. E. & Sheremata, W. A. Event-related potential P300 in multiple sclerosis: relation to magnetic resonance imaging and cognitive impairment. *Arch Neurol-Chicago* **49**, 44–50 (1992).
41. Van Der Stelt, O. & Belger, A. Application of electroencephalography to the study of cognitive and brain functions in schizophrenia. *Schizophrenia Bull* **33**, 955–970 (2007).
42. Sporns, O. Network attributes for segregation and integration in the human brain. *Curr Opin Neurobiol* **23**, 162–171 (2013).
43. Cocchi, L., Zalesky, A., Fornito, A. & Mattingley, J. B. Dynamic cooperation and competition between brain systems during cognitive control. *Trends Cogn Sci* **17**, 493–501 (2013).
44. Fornito, A., Zalesky, A. & Breakspear, M. Graph analysis of the human connectome: promise, progress, and pitfalls. *Neuroimage* **80**, 426–444 (2013).
45. Duncan-Johnson, C. C. & Donchin, E. The P300 component of the event-related brain potential as an index of information processing. *Biol Psychol* **14**, 1–52 (1982).
46. Houlihan, M., Stelmack, R. & Campbell, K. Intelligence and the effects of perceptual processing demands, task difficulty and processing speed on P300, reaction time and movement time. *Intelligence* **26**, 9–25 (1998).
47. Johnson, R., Pfefferbaum, A. & Kopell, B. S. P300 and long-term memory: Latency predicts recognition performance. *Psychophysiology* **22**, 497–507 (1985).
48. Tian, Y., Klein, R. M., Satel, J., Xu, P. & Yao, D. Electrophysiological explorations of the cause and effect of inhibition of return in a cue-target paradigm. *Brain Topogr* **24**, 164–182 (2011).
49. Mesulam, M. Large-scale neurocognitive networks and distributed processing for attention, language, and memory. *Ann Neurol* **28**, 597–613 (1990).
50. Christoff, K., Ream, J. M. & Gabrieli, J. D. Neural basis of spontaneous thought processes. *Cortex* **40**, 623–630 (2004).
51. De Luca, M., Beckmann, C., De Stefano, N., Matthews, P. & Smith, S. M. fMRI resting state networks define distinct modes of long-distance interactions in the human brain. *Neuroimage* **29**, 1359–1367 (2006).
52. Buschman, T. J. & Miller, E. K. Top-down versus bottom-up control of attention in the prefrontal and posterior parietal cortices. *science* **315**, 1860–1862 (2007).
53. Rosen, A. *et al.* Neural basis of endogenous and exogenous spatial orienting: a functional MRI study. *J Cognitive Neurosci* **11**, 135–152 (1999).
54. Portin, R. *et al.* Does P3 reflect attentional or memory performances, or cognition more generally? *Scand J Psychol* **41**, 31–40 (2000).
55. Srinivasan, R., Nunez, P. L. & Silberstein, R. B. Spatial filtering and neocortical dynamics: estimates of EEG coherence. *IEEE T Bio-Med Eng* **45**, 814–826 (1998).
56. Thatcher, R. W., North, D. & Biver, C. EEG and intelligence: relations between EEG coherence, EEG phase delay and power. *Clinical neurophysiology: official journal of the International Federation of Clinical Neurophysiology* **116**, 2129–2141 (2005).
57. Rubinov, M. & Sporns, O. Complex network measures of brain connectivity: uses and interpretations. *Neuroimage* **52**, 1059–1069 (2010).

Acknowledgements

This work was supported by the 973 program 2011CB707803, the National Nature Science Foundation of China (#61175117, #61522105, #81330032, #81401484, #31200857 and #31100745), the program for New Century Excellent Talents in University (#NCET-12-0089) and the 863 project 2012AA011601.

Author Contributions

F.L., P.X., Y.T. and D.Y. conceived of and designed the experiments. F.L., H.L., F.W. and Y.J. performed the experiments. F.L., H.L. and R.Z. analyzed the dataset. F.L., T.L., D.K.G., D.Q.G. and P.X. wrote the manuscript. All authors reviewed the manuscript.

Additional Information

Competing financial interests: The authors declare no competing financial interests.

How to cite this article: Li, F. *et al.* Relationships between the resting-state network and the P3: Evidence from a scalp EEG study. *Sci. Rep.* **5**, 15129; doi: 10.1038/srep15129 (2015).



This work is licensed under a Creative Commons Attribution 4.0 International License. The images or other third party material in this article are included in the article's Creative Commons license, unless indicated otherwise in the credit line; if the material is not included under the Creative Commons license, users will need to obtain permission from the license holder to reproduce the material. To view a copy of this license, visit <http://creativecommons.org/licenses/by/4.0/>