

SCIENTIFIC REPORTS



OPEN

Identification of *Drosophila* Mutants Affecting Defense to an Entomopathogenic Fungus

Hsiao-Ling Lu, Jonathan B. Wang, Markus A. Brown, Christopher Euerle & Raymond J St. Leger

Received: 09 April 2015

Accepted: 26 June 2015

Published: 23 July 2015

Fungi cause the majority of insect disease. However, to date attempts to model host–fungal interactions with *Drosophila* have focused on opportunistic human pathogens. Here, we performed a screen of 2,613 mutant *Drosophila* lines to identify host genes affecting susceptibility to the natural insect pathogen *Metarhizium anisopliae* (Ma549). Overall, 241 (9.22%) mutant lines had altered resistance to Ma549. Life spans ranged from 3.0 to 6.2 days, with females being more susceptible than males in all lines. Speed of kill correlated with within-host growth and onset of sporulation, but total spore production is decoupled from host genotypes. Results showed that mutations affected the ability of *Drosophila* to restrain rather than tolerate infections and suggested trade-offs between antifungal and antibacterial genes affecting cuticle and gut structural barriers. Approximately, 13% of mutations were in genes previously associated with host pathogen interactions. These encoded fast-acting immune responses including coagulation, phagocytosis, encapsulation and melanization but not the slow-response induction of anti-fungal peptides. The non-immune genes impact a wide variety of biological functions, including behavioral traits. Many have human orthologs already implicated in human disorders; while others were mutations in protein and non-protein coding genes for which disease resistance was the first biological annotation.

The fruit fly *Drosophila melanogaster* has been the model of choice to develop ideas about innate immunity and host–pathogen interactions^{1,2}, but much of what we know has been deciphered using opportunistic human pathogens stabbed or injected into immunocompromised flies. These studies model septic injuries but by bypassing the initial steps of cuticular penetration they may not be appropriate models to study commonly occurring insect pathogens³. However, they have shown that *Drosophila* activates a wide range of inducible reactions when microbes enter the hemocoel¹. The fast-acting responses are largely mediated by hemocytes circulating in the hemolymph and include the coagulation or melanization of foreign objects, phagocytosis of microbes and cellular encapsulation of parasites¹. The slow response is induced over the course of several hours following a systemic infection, and is tailored to combat specific pathogen classes. The anti-fungal response is largely mediated by the evolutionarily conserved Toll pathway¹, and leads to induction of antifungal peptides, mainly Drosomycin (Drs) and Metchnikowin, into the hemolymph.

Fungi cause the majority of insect disease⁴, and include species such as *Metarhizium anisopliae* that are naturally pathogenic to *Drosophila*. Aside from playing a crucial role in natural ecosystems, *Metarhizium* spp. are being developed as alternatives to chemical insecticides, and as a model for understanding how fungi infect insects⁵. These endeavors could benefit greatly from using the *Drosophila* model system to investigate the interplay between host components and fungal strategies to circumvent these components. However, other than the well-characterized activation of the Toll pathway⁶, little is known of the genetic architecture of *Drosophila*'s interactions with naturally occurring fungal pathogens.

Department of Entomology, University of Maryland, College Park, Maryland, United States of America. Correspondence and requests for materials should be addressed to R.J.S.L. (email: stleger@umd.edu)

Here we report the results of a screen for mutations affecting *Drosophila*'s ability to resist infection by *M. anisopliae* ARSEF549 (Ma549), utilizing *Minos*-element insertion lines that were constructed in isogenic backgrounds. Unlike viruses and bacteria that normally infect through the oral route, *M. anisopliae* breaches the cuticle reaching directly into the hemocoel using a combination of mechanical pressure and an array of cuticle-degrading enzymes⁵. This renders *M. anisopliae* much more amenable to screening than opportunistic human fungal pathogens that have to be injected into the hemocoel to cause infection, and allowed us to study the whole suite of host defenses that the fly is able to mount. By focusing on pathogen life history traits and fly survival rather than just monitoring antimicrobial peptide (AMP) transcription, as many studies do¹, we looked at how host genotypes affect pathogen fitness. Adaptation of pathogens to their hosts depends critically on factors affecting pathogen reproductive rate, but the extent to which varying host genotype might affect the evolution of pathogen life history is unclear⁷. We also examined the effects of host genotype on variation in critical stages of a pathogen's life history, and at the interconnection of defense with other aspects of host physiology that can set the stage for trade-offs between immunity and other costly life-history traits^{8–9}. This study establishes a foundation for understanding the genes imparting *Drosophila*'s resistance to a natural fungal pathogen, and will allow the identification of gene networks that may be specific to *M. anisopliae* infection, to insect pathogenic fungi in general, or to a variety of opportunistic mammalian pathogens.

Results

To gain insight regarding the genes and pathways required for normal defense against fungi, we conducted a forward genetic screen in the *Drosophila Minos* insertion mutant collection (2613 single, homozygous lines representing ~15.8% coverage of the fly genome, based on 14029 protein coding genes in *Drosophila*¹⁰).

Age-matched flies from each mutant line were infected topically with spores of Ma549, and survival was monitored. A total of 91 mutant lines demonstrated enhanced resistance, while 150 demonstrated lowered resistance compared to wild-type flies, and these were defined as being “resistant” or “susceptible”, respectively (Fig. 1 and Supplementary Table S1). The average LT₅₀ was 4.4 days with a range of 3.0 to 6.2 days. Overall, 241 mutant lines (9.22% of the lines we screened) had altered resistance to Ma549. This indicates a large mutational target for disease resistance, consistent with pleiotropy and many biological processes affecting this trait¹¹. The asymmetrical distribution of mutational effects indicates more mutations decrease rather than increase disease resistance as expected for a component of fitness.

These 241 lines included 180 with insertions in the coding regions of genes and 19 lines with insertions in upstream promoter regions. Three lines have insertions 2–5kb upstream of a gene and five lines have insertions within 2kb downstream of the 3'UTR of a gene. These genes are listed in Supplementary Table S1 as they are the only genes in the vicinity of the inserts and as long-distance effects are not uncommon most parsimoniously the inserts affect these genes. Overall, 200 inserts were in or adjacent to protein coding genes (two lines had inserts in the *Connectin* gene), and seven were in long non-protein coding genes, 22.4% of which, including six of the non-protein coding genes, had unknown functions. The *Drosophila* genome has a few hundred non-coding RNAs but they are poorly characterized¹², so a proposed role for long non coding RNAs in fungal disease resistance is a novel one. The seventh non-coding RNA, *hsr-omega*, has functions affecting protein synthesis and oogenesis. A total of 17 inserts were in regions with no annotated genes within 5kb of the *Minos* insertion site and either have long-range effects on the neighboring gene(s) or affect an un-annotated gene in the more immediate vicinity. Thirteen lines have inserts located in overlapping genes and four additional lines had inserts in an intergenic region <2kb from two flanking genes, and could affect either or both genes.

Correlation between traits. To assess the correlation between disease resistance and response to food deprivation we examined times of death of flies maintained on agar (Supplementary Fig. S1). The correlation between disease resistance and starvation longevity ($r = 0.02371$, $p = 0.7181$), was not significantly different than zero, indicating that the *Minos* inserts did not decrease general robustness of susceptible flies or increase robustness of resistant flies. Climbing ability is another physiological index commonly applied to flies, and we assessed the correlation between time of death and climbing ability for a subset of 54 randomly selected mutant lines (Supplementary Fig. S1 and Table S2). There was no linear relationship between disease resistance and climbing ability, so the effects are not associated.

To understand the impact of host fitness on fungal fitness we looked at correlations between four key life history traits at different steps of the infection process; within-host growth (fungal load, measured as CFU's), host life span (LT₅₀ values), latent period (the lag time between inoculation and sporulation), and sporulation capacity (the total number of spores per *Drosophila* cadaver). Spore production is a measure of pathogen transmission potential and therefore pathogen fitness⁷. We found a strong negative correlation between host life span and within-host growth 3.5 days post infection (Fig. 2A. $r = -0.7983$, $p < 0.001$), i.e., 63.7% (r^2) of the variation in life span is explained by variation in fungal load at this time point. CFU's per insect ranged from <5 in the most resistant flies to over 8,000 in susceptible flies, showing that susceptible host genotypes were much less able to restrain fungal growth. A time course of CFU counts confirmed that wild type (LT₅₀ 4.3 days) and resistant flies delayed fungal growth compared to susceptible flies (Fig. 2B). CFU's appeared 2.5 days post infection in female wild type flies but remained <20 per fly until 3.5 days. In all lines, fungal loads sharply increased in the day preceding

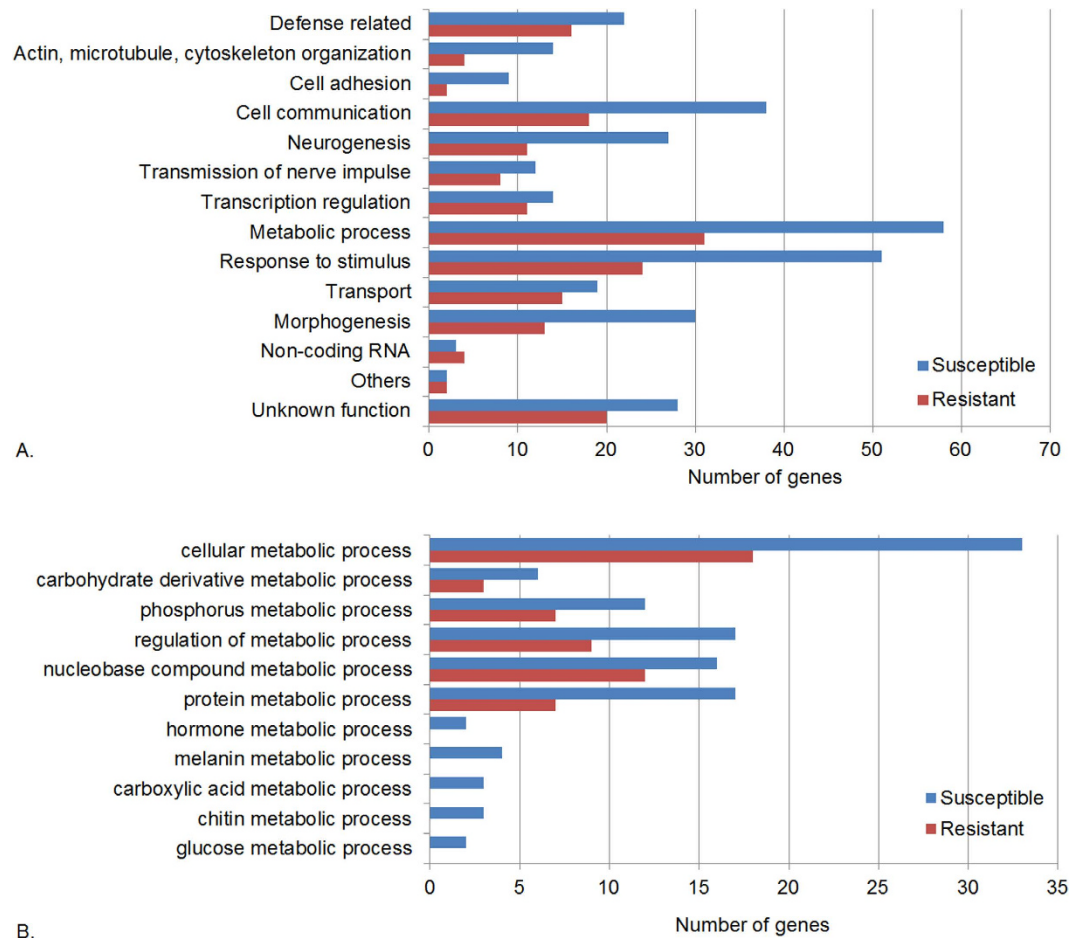


Figure 1. Classification of *Drosophila* genes that change susceptibility to *Metarhizium* infection.

(A) Genes with mutations increasing (susceptible, blue bar) or decreasing (resistant, red bar) susceptibility to Ma549 infection were classified into categories based on gene ontology and published references. Overall, 147 genes were identified from susceptible lines and 94 genes were identified from resistant lines. Details of genes are in Supplementary Table S1. (B) The percentage of genes in the subcategory “metabolic process” was calculated based on 58 genes in susceptible lines and 31 genes in resistant lines. The x-axis indicates the number of genes in each category.

death, with proliferation occurring 2.5–3 days and 4.5–5 days post-infection in susceptible and resistant flies, respectively. We also used a Ma549 transformant expressing GFP to track infections in whole insects and isolated hemolymph samples (Fig. 3). Fluorescence showed localized fungal infections by day 2 at intersegmental sites that were much larger by day 3 coincident with blastospores (yeast-like budded cells) appearing in the hemolymph. However, massive proliferation of blastospores and subsequently short hyphal lengths only occurred 4 to 4.5 days post-infection in wild type flies, consistent with CFU counts and demonstrating a time lag between penetration and proliferation that did not occur in susceptible lines. Ma549 expressing GFP is sufficiently bright as to be clearly visible from outside the infected insect’s abdomen, which confirmed that blastospores and hyphal bodies accumulated in the body cavity in the day preceding death, and flies continued to fill with fungal hyphae post-mortem leading up to sporulation (Fig. 3G,H).

Host genotype impacted the onset of Ma549 sporulation which strongly correlated with life span (Fig. 4); correlation values for males and females were 0.96, and 0.9274, respectively ($p < 0.001$). That $>92\%$ of the variation in latent period is explained by life span is due to sporulation commencing on cadavers within 60 hours post-mortem. However, fewer CFU’s 3.5 days post-infection, and longer host life span or latent period did not correspond to significantly less spore production. Indeed, host genotype had no significant effect on spore production (mean spore production per cadaver per line = 6.1×10^6 for males and 9.8×10^6 for females, all p value ≥ 0.05).

To identify sexual dimorphism, we measured disease resistance separately for males and females in the 54 randomly selected lines (Supplementary S2 Table). We observed significant sex differences, with wild type (control) females and females from all but one of the mutant lines being significantly ($p < 0.01$) more susceptible than males (average female LT_{50} was 1.08 days less than males). Females disrupted in

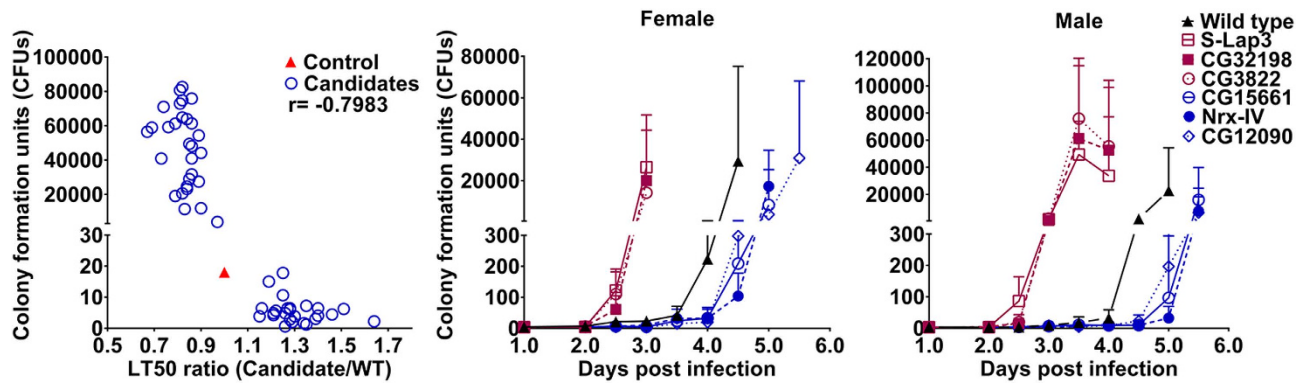


Figure 2. Correlation between traits. (A) Negative correlation between fungal growth (colony forming units, CFUs) and male host life span (LT₅₀ ratio, candidates vs. wild type) at 3.5 days post infection. CFUs were averaged from 5 individual flies per fly line (experiment repeated twice). (B) Time course of CFU production in female or male flies. Three susceptible lines (red) and three resistant lines (blue) are shown as representative examples. The genes affected in these lines are labeled on the right: *S-Lap3* (aminopeptidase), *CG32198* (unknown gene related to defense response to bacterium), and *CG3822* (glutamate receptor) are genes affected in susceptible lines; *CG15661* (glucuronosyltransferase), *Nrx-IV* (transmembrane signaling receptor) and *CG12090* (GTPase activator) are genes affected in resistant lines.

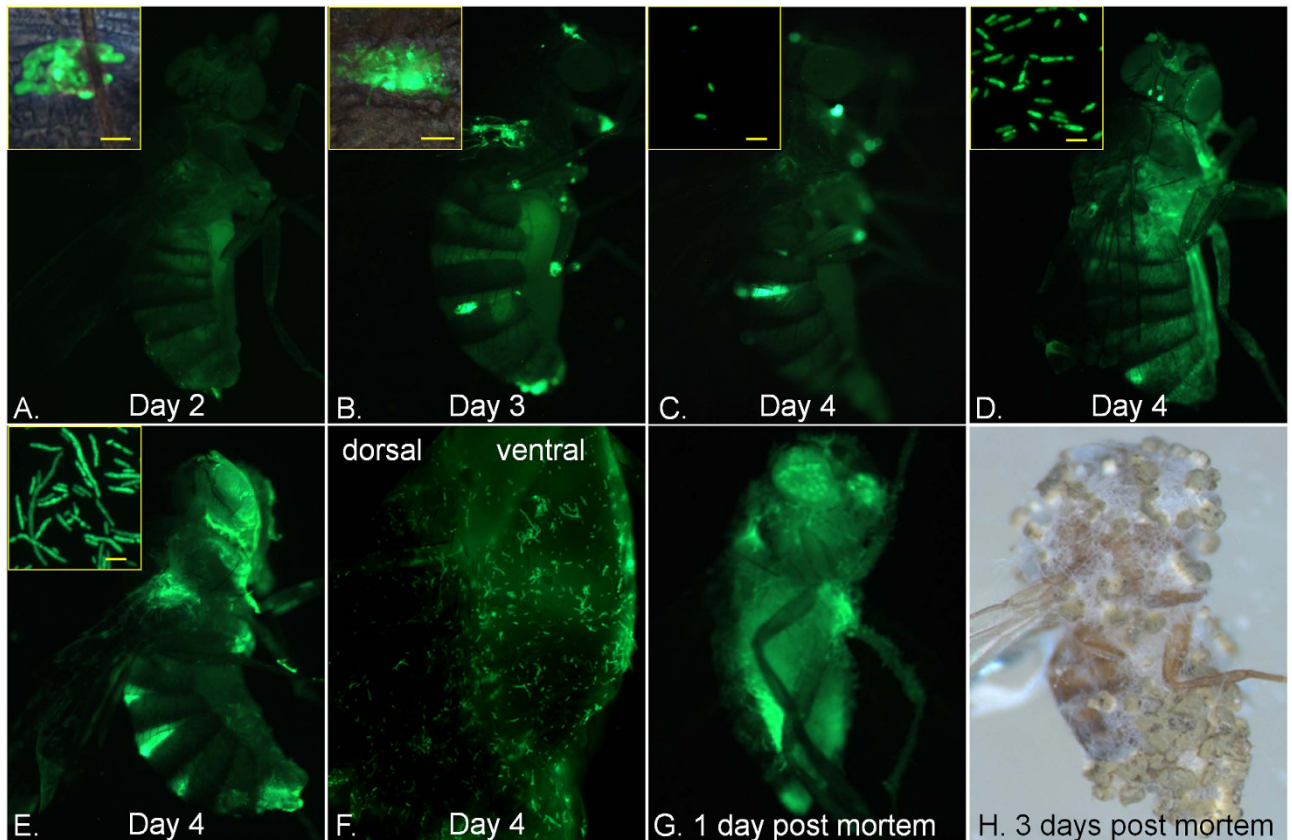


Figure 3. Growth of *Metarhizium* in flies. Wild type flies ($y^1_w^{67c23}$), two (A), three (B), and four days (C–F) post infection with GFP-Ma549. Fungal growth on abdominal intersegmental membranes (shown in insets, A–B). At day 4 variable numbers of GFP-Ma549 blastospores (C and D) and short hyphal lengths (D and E) are found in hemolymph samples (shown in insets), and are visible from outside the infected insect's ventral abdomen (F). Flies one-day post mortem (G) showing cadavers filled with fluorescent hyphae. Fly three days post mortem showing sporulation on cadaver surface (H). Bar in image B represents 50 μm ; bars in other images are 10 μm .

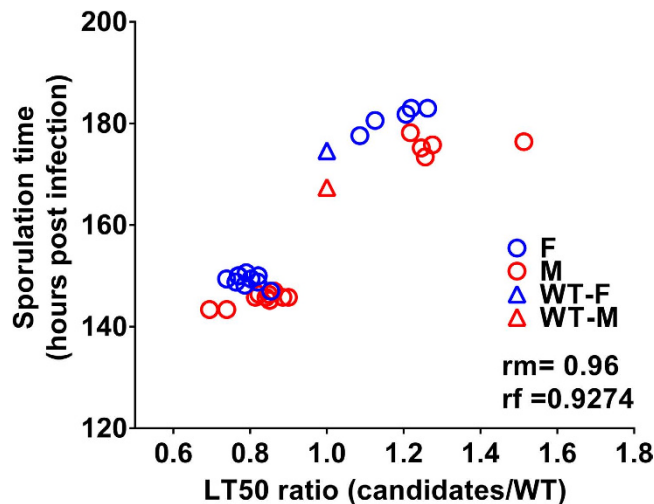


Figure 4. Positive correlation between latent period (time of sporulation) and host life span (LT_{50} ratio). Sporulation time (hours post infection) was averaged for 10 flies per sex per fly line. The LT_{50} ratio was obtained by dividing the LT_{50} of each candidate line with the LT_{50} of wild type flies. Correlation values for males (rm) and females (rf) are shown. Blue: female (F); red: male (M); WT: wild type.

CG3940 died faster than males but the difference fell short of significance ($p = 0.06046$). We found no significant differences between virgin and mated wild type females and between virgin and mated wild type males in susceptibility to *Ma549*.

Gene ontology analysis. Gene ontology (GO) analysis revealed diverse categories of genes that confer increased susceptibility or resistance to *Ma549* (Fig. 1A). Most (74.7%) of the *Drosophila* genes that affect susceptibility to *Metarhizium* have human counterparts. Overall, 54 lines (22.4%) with altered susceptibility have inserts in genes with no known function in *Drosophila*. Nine of these genes are evolutionary conserved and have human counterparts with no phenotype found, i.e., altered susceptibility to *Metarhizium* is the first phenotype described for them.

There is a trend towards differential representation of some gene ontology classes between the resistant and susceptible lines (Fig. 1A). For example, approximately 30% of the susceptible lines are mutated in genes affecting cellular communication, but only 19% of genes in resistant lines fell into this category. Compared to resistant lines, susceptible lines also include a higher percentage of genes affecting metabolic processing, morphogenesis, response to stimulus, neurogenesis, cell adhesion, and cytoskeletal organization. In the subcategory “metabolic process”, 12 mutations (20.7%) in susceptible lines affect processing of hormones, melanin production, glucose, chitin, and carboxylic acid metabolism; no mutations in resistant lines affected these processes (Fig. 1B). GO enrichment analysis confirmed that susceptible lines are significantly enriched in mutations affecting cell adhesion and cellular communication (primarily cell surface receptors and associated signal transduction pathways), as well as organ and tissue development and morphogenesis, and positive regulation of metabolism and cell motility (Fig. 5).

Immune-related genes altering susceptibility to *Ma549*. A total of 31 (17 susceptible, 14 resistant) of our 241 candidate genes (13% of total), overlapped with candidate innate immune response genes identified in previous screens using viruses¹³, bacteria^{8,14–19}, *Candida albicans*²⁰, a protozoan parasite²¹, and the eggs of a parasitoid wasp²² (Supplementary Table S1). The Toll and Imd pathogen-recognition pathways are well represented in most of these previous screens. Toll-dependent *Drosomycin* (*Drs*) expression is up-regulated by *Metarhizium*-infected flies⁶, but surprisingly inserts disrupting *pipe* (stock numbers 24732 and 29054) and *spheroide* (29227), involved in activating the Toll pathway, and core Toll signaling pathway components *Pellino* (26071), *Gprk2* (26097) and *ush* (23467), did not affect susceptibility to *Ma549* although they are known to be involved in production of *Drosomycin*²³. We used expression of *Drs*-GFP, a classical read-out of activation of the Toll pathway²⁴ to confirm *Drs*-GFP was induced by infection with *Ma549* (Fig. 6). *Drs*-GFP flies disrupted in the critical Toll pathway gene *dif* show no GFP fluorescence in response to *Ma549*, but nor were they more susceptible to *Ma549* (Supplementary Table S3). Real time-PCR confirmed greatly reduced expression of *Drs* in these flies. We conclude that the Toll pathway does not restrain *Ma549* even though it is activated by *Ma549*, and responsible for *Drs* transcription. This contrasts with opportunistic human pathogens which are lethal to Toll mutants but not to wild-type flies²⁵.

Although the Toll pathway is ineffective against *Ma549*, there was substantial evidence that other components of defense provide resistance. A group of susceptible lines were mutated in cuticle biosynthesis genes, and presumably limit cuticle penetration by *Metarhizium* when functioning normally

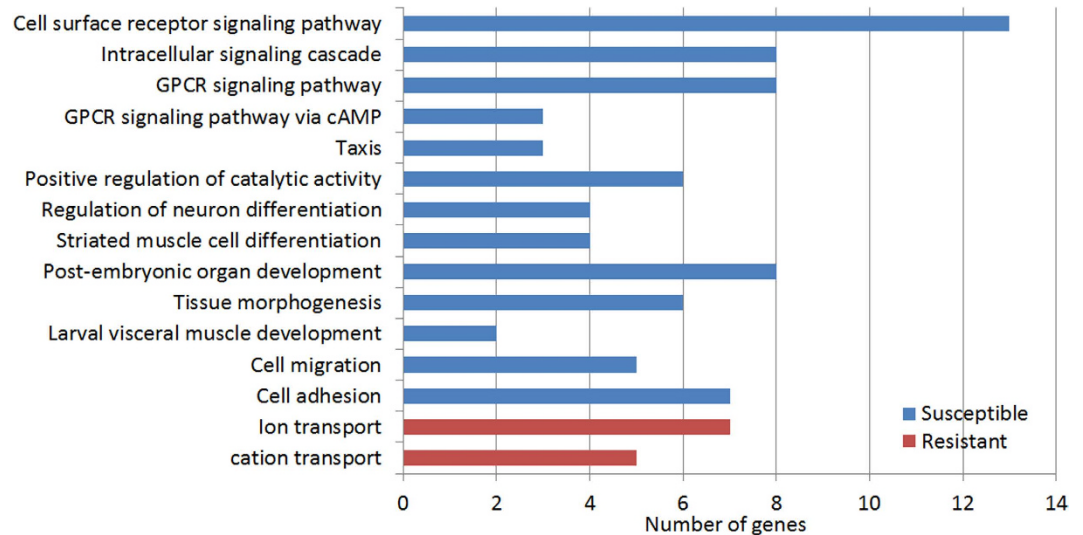


Figure 5. Enrichment of biological function categories of *Drosophila* candidate genes associated with infection sensitivity. Gene ontology categories contain overlapping genes within susceptible or resistant candidates. The x-axis indicates the number of genes in each category.

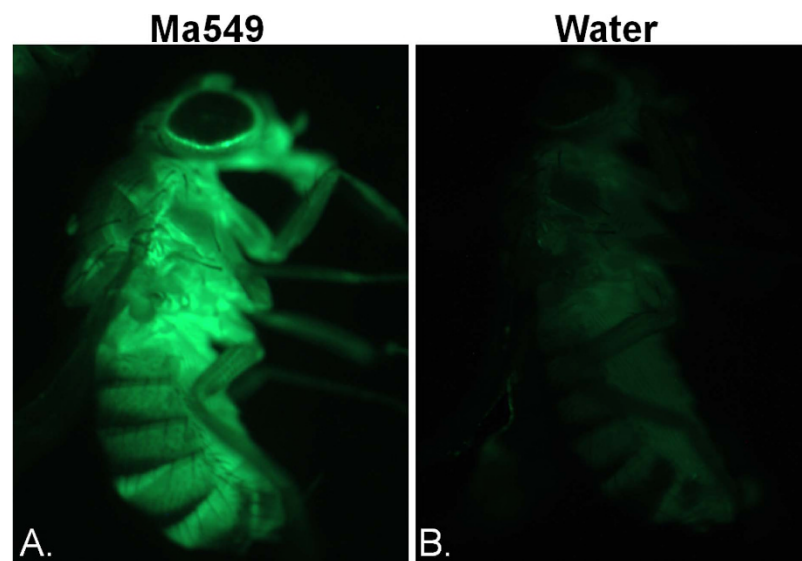


Figure 6. Fluorescent microscope images of Drs-GFP expression. Drs-GFP fly infected with Ma549 (A), compared with uninfected control fly (vortexed in water) (B), showing that systemic infection results in a completely labelled fly. Drs-GFP is a reporter system for activation of the Toll immune pathway and shows a strong, albeit unsuccessful immune response to Ma549.

(Supplementary Table S1). An insert in the coagulation (blood clotting) *hemolectin* gene also increased susceptibility. *Drosophila* responds to parasitic wasp eggs in the hemocoel by surrounding the egg with a multicellular capsule¹. *RhoGEF3* (a Rho-family GTPase) is necessary for encapsulation²², and an insert in *RhoGEF3* increased susceptibility of *Drosophila* to Ma549, suggesting commonalities in defense against fungi and larger parasitoids. During encapsulation, plasmatocytes deposit a protein layer onto the parasite derived from their extracellular matrix proteins (ECM)²². Disruption of plasmatocyte ECM protein *peroxidasin*, that functions in both phagocytosis and encapsulation²⁶, increased susceptibility to Ma549 as did inserts in the transcription factor *caupolican* and a clathrin-binding protein (*likeAPI180*) that regulate phagocytosis against *C. albicans*²⁰, and *Cryptococcus neoformans*²⁷, respectively.

Disrupting an FGF receptor (*heartless*), an endopeptidase (*CG11843*), an ATPase involved in cell motility (*CG14838*), a peroxidase (*CG5873*) and two genes with unknown functions (*CG14331* and *CG32198*) increased susceptibility to *Serratia marcescens*¹⁸ as well as to Ma549. However, there was also evidence for trade-offs between antibacterial and antifungal genes. The group of 16 Ma549 resistant lines

disrupted in putative defense related genes included a chitin synthase active in the gut and gonads, a JAK/STAT signaling protein (controls host defense in the gut), and 6 antibacterial genes that are active in the gut or gonads. Conversely, knocking down the cuticle development gene *Cpr97Eb* and an unknown gene *CG31323* increases resistance to *S. marcescens*¹⁸, while decreasing resistance to Ma549. Similarly, knocking down *srpk79D* increases resistance to *Listeria monocytogenes*⁸, but decreases resistance to Ma549.

Non-immunity genes represented in susceptibility lines to Ma549. The gene ontology categories represented in susceptible lines are involved in a broad spectrum of biological functions including basic cellular processes (mitosis, transcription, translation and protein modification), early development, muscle and nervous system development and function, chemosensation and vision, and metabolism; 25.2% of the mutations represent diverse pathways affecting morphogenesis and neurogenesis. Thirteen genes from susceptible lines (and eight genes from resistant lines), have human orthologs with descriptors that include an aspect of temperament (including some with dysfunctions associated with mood affective disorders, autism, schizophrenia and Alzheimer's), or cognitive development including learning.

Nutritional factors and circadian rhythms are known to affect *Drosophila* survival to bacteria^{28,29}. We found only a single candidate gene, the pleiotropic kinase *CkIIalpha*, associated with circadian rhythms in a previous study³⁰. Three of the Ma549 susceptibility lines were mutated in octopamine (*Octbeta2R*, *Oamb*) and dopamine (*Dop1R1*) receptors, which work together in *Drosophila* learning, and form memories for sugar and other foods³¹. Two susceptible lines had insertions in (*dpr4*) or near (*dpr15*) members of the Ig family that regulate taste perception and proboscis extension³². Three susceptible lines (*AstA-R1*, *AstA-R2* and *AstC-R2*), were mutated in the allatostatin signaling pathway that directly regulates food intake by adult *Drosophila*³³. This enrichment of genes involved in appetite is consistent with nutritional status being a big factor in resistance to fungal pathogens. However, we did not find a simple relationship when we looked at the effects of these feeding behavior genes on starvation stress. *Octbeta2R*, *Oamb* and *Dop1R1* mutated lines were not significantly altered in starvation tolerance; *dpr4* ($t = 3.237$, $p = 0.0119$), *dpr15* ($t = 2.839$, $p = 0.0218$) and *AstA-R2* ($t = 5.620$, $p = 0.0005$) lines were significantly more resistant and *AstA-R1* was significantly less ($t = 6.054$, $p = 0.0003$) resistant to starvation.

Although proboscis extension and allatostatin are specific to arthropods, dopamine and octopamine have similar functions in *Drosophila* and mammals³¹. Many elements of metabolic homeostasis are conserved between flies and mammals, including genes for fat storage³⁴, so we looked for concordant mammalian systems that influence disease and physiology. In total, 53.9% of the genes associated with changes in disease susceptibility in *Drosophila* have human counterparts associated with diseases, with the obesity category being one of those prominently associated with susceptibility (Fig. 7A). *Drosophila* mutants in the obesity category included orthologs to human genes impacting metabolism (including *Ink* involved in insulin signaling), sensory inputs, and immunity (Fig. 7B).

If functions are conserved, mutations in obesity related genes could affect starvation resistance. However, the mutational correlate between starvation tolerance and Ma549 resistance in lines mutated in "obesity category" genes was not significantly different from zero ($r = -0.1252$, $p = 0.4807$). Starvation tolerance may depend on metabolic state, but Ma549 resistance in lines affected in basic metabolic processes also did not correlate with starvation resistance ($r = -0.09877$, $p = 0.2771$) (Supplementary Fig. S1). Analyzed individually, 59.8% of obesity and metabolic process genes had significant and 31.3% highly significant ($p < 0.001$) effects on starvation tolerance. However, this was not significantly different than the total Ma549 resistant and susceptible mutant population showing altered starvation tolerance ($p = 0.7181$).

Non-immunity genes represented in resistant lines to Ma549. Six behavioral genes were found in Ma549-resistant mutant flies. Of particular note, mutations in *Spn*, *Arrest* and *Px* previously implicated in reduced aggressive behavior in flies³⁵, increased resistance to Ma549, suggesting a possible trade-off between hostile social interactions and disease resistance. We also found disrupting two of *Drosophila*'s *Synaptotagmins* (*Syt β*, *Syt 7*), increased resistance. *Synaptotagmins* are responsible for multiple types of Ca^{2+} -induced exocytosis, but their exact biological roles in mammals and *Drosophila* are controversial^{36,37}. Disrupting the glutamate receptor *CG31760* and the glutamate Ca^{2+} ion channel *CG11155* also increased resistance consistent with Ca^{2+} having an unknown function inhibiting *Drosophila*'s defense against Ma549. Two other genes (*CG13793* and *Neurexin IV*), associated with exocytosis and neurotransmitter transport were disrupted in resistant lines as was *Still life*, a Rho GTPase regulator of the neural cytoskeleton.

As with susceptible *Drosophila* lines, resistant lines were disrupted in genes with pleiotropic effects on other complex traits such as morphogenesis and response to stimuli. Not surprisingly, resistant lines were disrupted in fewer (three) positive regulators of processes than susceptible lines (eleven). Three resistant lines were disrupted in negative regulators of multicellular growth (*Ac76E*), transcription (*pgc*) and translation (*Arrest*). As previously mentioned *Arrest* is also implicated in moderating aggression illustrating the pleiotropic nature of many genes implicated in disease resistance.

Discussion

Ma549 life history stages show apparent density-dependent effects; greater growth within the host was correlated with shorter life spans and earlier onset of reproduction. The most commonly accepted model

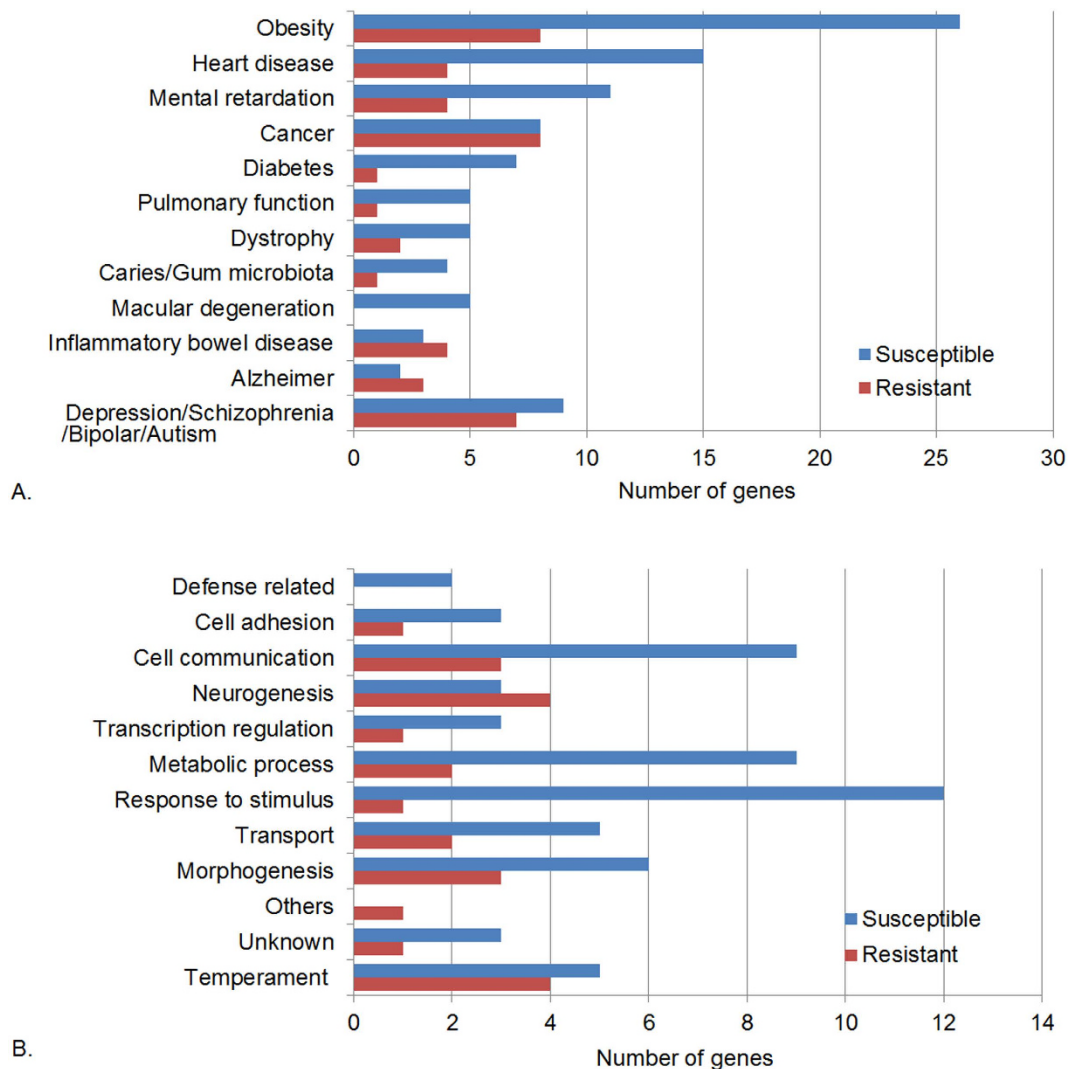


Figure 7. Diseases associated with human orthologs of *Drosophila* candidate genes. (A) The number of *Drosophila* genes with human orthologs related to disease. (B) *Drosophila* genes with human orthologs related to obesity. *Drosophila* gene categories were the same as Fig. 1. *Drosophila* genes with human orthologs affecting obesity and temperament are listed at the end of the bar chart. The x-axis indicates the number of genes in each category.

assumes that within-host growth is a critical parameter in the evolution of virulence, but that high virulence is traded-off against increased host mortality cutting short the infectious period for transmission between hosts^{7,38}. In contrast, variation in within-host Ma549 growth between *Drosophila* lines and their susceptibility to Ma549 does not affect total spore production on individual flies because Ma549 sporulates only after host death. Instead, trade-offs affect latent periods which are longer on resistant hosts, so a *Metarhizium* strain that evolves to kill these as quickly as susceptible lines should have higher lifetime fitness. However, transgenic *Metarhizium* strains that killed very quickly came at a cost of decreased spore production^{39,40}, which will limit the apparent benefit of a very short latent period and thereby constrain the evolution of virulence. These results suggest that differing host pathogen interactions will produce widely varied costs that impact where trade-offs occur between life history traits but will not eliminate them.

Unlike some other *Metarhizium* strains, Ma549 does not use toxins and kills principally by invasive growth and depleting the host of nutrients⁴¹. We predict this pathogen strategy would likely induce selection on the host to reduce fungal infectivity and growth as these are the traits most strongly affected by host genotype. Sporulation capacity is a measure of host resistance to plant pathogens⁷, but that would not apply to Ma549 and *Drosophila*. Fly lines that succumbed quickly to Ma549 all had higher fungal loads than wild type flies 3.5 days post-infection, suggesting that the principal defect in these flies is that they are less able to restrain *Metarhizium* growth. In contrast, many *Drosophila* mutants succumb to bacterial infections because of defects in tolerance rather than resistance^{8,42}. This distinction may be because

it is more difficult to evolve tolerance traits to a filamentous fungal pathogen that unlike bacteria actively penetrates and colonizes infected tissues. Plausibly, mutations in growth factor signaling pathways such as *pvf1*, involved in wound repair⁴³, or structural components such as *dystrophin* increase susceptibility because these genes are normally modulators of both tolerance and resistance. This could occur if reduced damage repair in the vicinity of invasive hyphae facilitates rapid fungal growth. However, none of the resistant lines appeared to tolerate Ma549 better than the wild type because their delayed mortality coincided with delayed rapid proliferation of Ma549.

The first line of defense that prevents microbial invasion into the hemocoel is structural, and comprises the external cuticle (for fungi), the gut peritrophic matrix (for bacteria), and the tracheal lining. Mutations in some genes that affect the gut matrix caused Ma549 infected flies to live longer implying trade-offs between resistance to fungal diseases and increased susceptibility to gut pathogenic bacteria. Possibly, knocking out antibacterial defenses in the gut allows resources to be diverted to anti-fungal defenses in the cuticle and hemolymph. There are alternative possibilities such as antagonism between Ma549 and commensal bacteria if the latter flourish more in some *Drosophila* lines. However, the concept of trade-offs is central to many evolutionary hypotheses for limited lifespan and optimal allocation of resources⁴⁴. It is likely that future studies in this direction will focus on the interactions between host defenses and global metabolism of *Drosophila* and in particular determine how nutrients and energy are distributed among organs during different phases of bacterial and fungal infections⁴¹.

Modeling fungal or bacterial infections in *Drosophila* typically involves injecting the pathogen of interest into female flies because of their larger size and relative resistance to injection injury when compared with male flies⁴⁵. By only bio-assaying females these studies may have missed sex differences as we found females in all lines were more susceptible to Ma549. This contrasts sharply with screens for other multifactorial phenotypes such as aggression and oxidative stress resistance where many mutations had different effects on males and females⁴⁶. Potentially, the increased susceptibility of females may be due to the energy demands of oogenesis⁹, but we found age-matched virgin and mated females were similarly susceptible to Ma549, whereas mating reduces the ability of female *Drosophila* to defend against bacteria⁴⁷. Presumably, the immune processes suppressed in mated females do not restrain Ma549 and therefore do not impact the progress of a natural infection.

Even when fungal pathogens are experimentally introduced directly into the fly hemolymph, wild-type flies are still capable of eliminating infection because they activate a wide range of immune mechanisms^{1,2}. Because wild-type *Drosophila* are resistant to most pathogenic fungi and bacteria⁴⁸, Toll deficient flies are frequently employed to model infections caused by medically important fungi. The Toll pathway is therefore regarded as having a critical role in immunity against fungi^{1,2}, but at least for dif-regulated components this does not apply to the natural pathogen Ma549. Evolving resistance against antimicrobial peptides was probably a pre-requisite for *Metarhizium* spp. to function as professional entomopathogens. Tolerance to products of the Toll pathway, e.g., drosomycin, will prevent clearance of Ma549 from the hemocoel, which likely dooms the fly. Nevertheless, the degree of functioning of the cellular immune response against Ma549 was somewhat surprising. *Metarhizium* blastospores can evade hemocytes by producing a hydrophilic collagen (Mcl1) coat⁴⁹. Furthermore, conidia can be internalized and grow within arthropod phagocytic cells, which may facilitate dispersal through the insect body⁵⁰. Nevertheless, we show that disrupting many genes that influence cellular immunity increases susceptibility. The potential immune function of clotting in response to Ma549 infection was particularly unexpected. Clots composed of melanized hemolectin fibers are rapidly generated at the site of an injury and act to trap microbes. It is an integral part of the insect immune response to bacteria and nematodes^{51,52}, but we are not aware of any similar reports in response to fungi. Infection by *Metarhizium* often produces a melanization reaction in the cuticle at the site of entry⁵³, and the involvement of hemolectin suggests that penetrant fungal hyphae are recognized as septic wounding or that clotting can occur in the absence of significant injury. Melanization increases resistance to *Metarhizium* spp., mainly due to toxic effects from L-DOPA oxidation products^{53,54}.

The approximately 87% of genes effecting resistance to Ma549 that were not previously implicated in interactions with pathogens explore many different aspects of host defense. Further analysis will be required to formally prove the involvement of these genes in disease resistance, including studying multiple mutant alleles, assessment of temporal and spatial expression patterns and evaluating disease resistance and associated traits in flies in which the genes are over- or under expressed. However, the repeated implication of genes effecting response to stimuli, nervous system development, synapse biogenesis and neuron functioning, temperament and cognition, suggests that some or all of the functions of these processes mediate disease resistance. They imply that disease resistance is linked to complex behaviors perhaps by affecting nutrient uptake or social interactions in a manner which alters disease resistance. *Drosophila* mutants in the obesity category included orthologs to human genes impacting sensory inputs and immunity, and nine have human orthologs that also influence temperament (Fig. 7B), providing a plausible link between behavioral or cognitive traits and disease resistance. Aggression is regulated in part by obesity-linked genes through octopamine signaling⁵⁵, indicating that these genes will provide an entree to analyzing interacting genes linking complex traits such as nutritional factors and disease resistance.

Overall, 9.22% of the mutant lines we screened had altered disease resistance and approximately half of these had significant effects on starvation resistance. Failure to find a simple association between

disease and starvation resistance might be expected when networks of pleiotropic genes regulate complex traits, and it is consistent with an earlier screen of P-element lines showing a similar very large mutational target for starvation resistance⁵⁶. Clearly being more or less tolerant to starvation does not by itself alter resistance to Ma549. However, 58 mutations affecting cellular processes and metabolism increase susceptibility (39.5% of all susceptibility genes), and it is plausible that dysfunction in these processes could specifically reduce expenditure of energy on immune responses. Overall, 53.9% of the *Drosophila* genes associated with susceptibility or resistance to Ma549 have been implicated in human diseases or disorders, suggesting that some of the processes that are important in flies are also relevant to mammalian host defense^{1,2}.

Material and Methods

***Drosophila* and fungal stocks.** The Drs-GFP, *Dif^f* and isogenic control line for *Dif^f* have been previously described^{24,57}. We obtained all available *Minos* insertion lines (Mi{ET1}) (listed in Supplementary Table S4) from the Bloomington *Drosophila* Stock Center and these were reared on Cornmeal-molasses-yeast-agar medium with Tegosept and Propionic acid (Genesee Scientific) at 24 ± 3 °C. The single insertion site in each line has been mapped and verified by resequencing of flanking DNA⁵⁸. Two isogenic backgrounds (*w¹¹¹⁸* stock number 5905; *y¹w^{67c23}* stock number 6599) were employed as controls.

M. anisopliae (ARSEF 549) was obtained from the USDA Entomopathogenic Fungus Collection (Ithaca, N.Y). Fungal cultures were moved from -80 degree stock tubes 10 days before each bioassay and grown on potato dextrose agar at 27 °C. Plasmid construction and transformation for GFP fluorescent Ma549 strains was described previously⁵⁹.

Fungal infection bioassay and screening procedure. During bioassay, flies were maintained at 27 °C, ~85% humidity, on food made without Tegosept and propionic acid. We bioassayed ~30 flies (2–4 days old) per mutant line with conidia from 10 day old Ma549 plates (see Supplementary methods for details). For the pilot screen, LT₅₀ values from individual lines were compared with the mean LT₅₀ of the experimental cohort treated the same day. Each cohort ranged from 100 to 200 lines. A fly line with an LT₅₀ value $\pm 5\%$ different than the average LT₅₀ was retested with a new cohort. Out of 2,613 lines, 866 were identified as putative candidates. In the secondary screen, putative candidate lines were compared with their control isogenic background line (3 replicates, experiment repeated at least twice for each candidate), and the LT₅₀ values were analyzed using Welch's T-test. The survival data from candidates were also compared to controls each day post infection using a Log-rank (Mantel-Cox) test (SPSS). Fly lines with significantly lower survival than the wild type ($p \leq 0.05$) were identified as susceptible lines and lines with significantly longer survival ($p \leq 0.05$) than wild type were identified as resistant lines.

Gene ontology and expression levels. Detailed information on *Minos* element insertion locations, genes affected by insertions, gene ontology, and gene expression levels were obtained from Flybase (<http://flybase.org>), Blast2Go Tool (<https://blast2go.com>), and FlyAtlas (<http://flyatlas.org>). In addition, we manually looked for genes that may be affected by the *Minos* element if the insertion site is within 2 kb from a gene. Gene ontology enrichment analysis was conducted using the DAVID program⁶⁰.

Human orthologs and disease/traits. We used the DRSC platform (<http://www.flyrnai.org>) to identify human orthologs and disease traits, and analyze alignments and scores. The DIOPT-DIST search tool in DRSC includes information from the NCBI OMIM database and genome-wide association studies. A low score (≤ 2) was excluded unless it was the only match score.

Starvation assay. A group of ~150 flies (2–4 days old) per mutant line were sub-divided into five fly vials each containing 5 ml of 1% agar and maintained at 27 °C, ~85% humidity. Dead flies were recorded every 8 hours for 72 hours. LT₅₀ values were calculated using SPSS 22.0 and compared with the average LT₅₀ from the same isogenic background.

Sex-dependent infection assay, climbing ability, fungal growth and sporulation capacity. We randomly selected 29 susceptible and 25 resistant strains (Supplementary Table S2), to test if the sex of flies influenced disease resistance, and also used this subset of flies to quantify pathogen life history stages and climbing ability. The selected lines all have the *y¹w^{67c23}* background and so the *y¹w^{67c23}* line was used as a control. To measure sexual dimorphism, ~25 females or males per line were tested per tube and the infection methods were as described in the fungal infection assay. Each experiment was replicated three times and LT₅₀'s were calculated using SPSS 22.0.

To measure fungal growth in the haemolymph, 3.5-days post inoculation, 5 flies per sex were individually homogenized with 45 μ l of 0.1% Tween 80. As most females from susceptible lines were dead by 3.5 days, we only analyzed data collected from the males of these lines. For resistant lines, the entire 45 μ l homogenate was spread onto selective medium plates. For susceptible lines, 5 μ l of a 10-fold dilution of the homogenate was spread onto plates. Colony forming units (CFUs) were counted after 7 days. For latent period and sporulation capacity, ten flies per sex harvested within 12 hours of death, were individually transferred into tubes containing a damp cotton ball and time of appearance of spores (latent

period) was recorded. After 20 days, 500 µl of 0.1% Tween 80 was added to each tube, the tubes were vortexed (1 minute), and spore counts per individual fly were made using a hemocytometer. Results are the average of 10 flies per line.

To assess climbing ability, a group of ~25 flies were transferred without anesthesia to a 50-mL conical tube. The flies were tapped to the bottom of the tube as a timer was simultaneously started. Images were taken at three, six and nine seconds and subsequently processed to determine the height of individual flies at each time point. Height and time values were then used to generate the slope of the line. Three replicates per line were performed and compared with the wild type control using Student's t-test.

Correlations between LT50 survival values and starvation, CFU counts, latent period, sporulation capacity, and climbing ability, were analyzed using GraphPad Prism 6 (GraphPad Software, Inc.).

References

- Lemaitre, B. & Hoffmann, J. The host defense of *Drosophila melanogaster*. *Annu. Rev. Immunol.* **25**, 697–743 (2007).
- Igboin, C. O., Griffen, A. L. & Leys, E. J. The *Drosophila melanogaster* host model. *J. Oral. Microbiol.* doi: 10.3402/jom.v4i0.10368 (2012).
- Panayidou, S., Ioannidou, E. & Apidianakis, Y. Human pathogenic bacteria, fungi, and viruses in *Drosophila*: disease modeling, lessons, and shortcomings. *Virulence* **5**, 253–269 (2014).
- Roberts, D. W. & St Leger, R. J. *Metarhizium* spp., cosmopolitan insect-pathogenic fungi: mycological aspects. *Adv. Appl. Microbiol.* **54**, 1–70 (2004).
- St Leger, R. J., Wang, C. & Fang, W. New perspectives on insect pathogens. *Fungal Biology Reviews* **25**, 84–88 (2011).
- Gottar, M. *et al.* Dual detection of fungal infections in *Drosophila* via recognition of glucans and sensing of virulence factors. *Cell* **127**, 1425–1437 (2006).
- Bruns, E., Carson, M. & May, G. Pathogen and host genotype differently affect pathogen fitness through their effects on different life-history stages. *BMC. Evol. Biol.* **12**, 135 (2012).
- Ayres, J. S., Freitag, N. & Schneider, D. S. Identification of *Drosophila* mutants altering defense of and endurance to *Listeria monocytogenes* infection. *Genetics* **178**, 1807–1815 (2008).
- Short, S. M. & Lazzaro, B. P. Reproductive status alters transcriptomic response to infection in female *Drosophila melanogaster*. *G3 (Bethesda)* **3**, 827–840 (2013).
- Tweedie, S. *et al.* FlyBase: enhancing *Drosophila* gene ontology annotations. *Nucleic Acids Res.* **37**, D555–559 (2009).
- Magwire, M. M. *et al.* Quantitative and molecular genetic analyses of mutations increasing *Drosophila* life span. *PLoS Genet.* **6**, e1001037 (2010).
- Koya, S. K. & Meller, V. H. roX RNAs and genome regulation in *Drosophila melanogaster*. *Prog. Mol. Subcell. Biol.* **51**, 147–160 (2011).
- Yasunaga, A. *et al.* Genome-wide RNAi screen identifies broadly-acting host factors that inhibit arbovirus infection. *PLoS Pathog.* **10**, e1003914 (2014).
- Kambris, Z. *et al.* *Drosophila* immunity: a large-scale *in vivo* RNAi screen identifies five serine proteases required for Toll activation. *Curr. Biol.* **16**, 808–813 (2006).
- Berkey, C. D., Blow, N. & Watnick, P. I. Genetic analysis of *Drosophila melanogaster* susceptibility to intestinal *Vibrio cholerae* infection. *Cell Microbiol.* **11**, 461–474 (2009).
- Baeg, G. H., Zhou, R. & Perrimon, N. Genome-wide RNAi analysis of JAK/STAT signaling components in *Drosophila*. *Genes Dev.* **19**, 1861–1870 (2005).
- Foley, E. & O'Farrell, P. H. Functional dissection of an innate immune response by a genome-wide RNAi screen. *PLoS Biol.* **2**, e203 (2004).
- Cronin, S. J. *et al.* Genome-wide RNAi screen identifies genes involved in intestinal pathogenic bacterial infection. *Science* **325**, 340–343 (2009).
- Agaisse, H. *et al.* Genome-wide RNAi screen for host factors required for intracellular bacterial infection. *Science* **309**, 1248–1251 (2005).
- Stroschein-Stevenson, S. L., Foley, E., O'Farrell, P. H. & Johnson, A. D. Identification of *Drosophila* gene products required for phagocytosis of *Candida albicans*. *PLoS Biol.* **4**(1): e4. doi: 10.1371/journal.pbio.0040004 (2006).
- Roxström-Lindquist, K., Terenius, O. & Faye, I. Parasite-specific immune response in adult *Drosophila melanogaster*: a genomic study. *EMBO. Rep.* **5**, 207–212 (2004).
- Howell, L. *et al.* A directed miniscreen for genes involved in the *Drosophila* anti-parasitoid immune response. *Immunogenetics* **64**, 155–161 (2012).
- Valanne, S., Wang, J.H. & Ramet, M. The *Drosophila* Toll signaling pathway. *J. Immunol.* **186**, 649–56 (2011).
- Ferrandon, D. *et al.* A drosomycin-GFP reporter transgene reveals a local immune response in *Drosophila* that is not dependent on the Toll pathway. *EMBO. J.* **17**, 1217–1227 (1998).
- Alarco, A. M. *et al.* Immune-deficient *Drosophila melanogaster*: a model for the innate immune response to human fungal pathogens. *J. Immunol.* **172**, 5622–5628 (2004).
- Nelson, R. E. *et al.* Peroxidase: a novel enzyme-matrix protein of *Drosophila* development. *EMBO. J.* **13**, 3438–3447 (1994).
- Qin, Q. M. *et al.* Functional analysis of host factors that mediate the intracellular lifestyle of *Cryptococcus neoformans*. *PLoS Pathog.* **7**, e1002078 (2011).
- Dionne, M. S., Pham, L. N., Shirasu-Hiza, M. & Schneider, D. S. Akt and FOXO dysregulation contribute to infection-induced wasting in *Drosophila*. *Curr. Biol.* **16** (2006).
- Stone, E. F. *et al.* The circadian clock protein timeless regulates phagocytosis of bacteria in *Drosophila*. *PLoS Pathog.* **8**, e1002445 (2012).
- Lin, J. M., Schroeder, A. & Allada, R. *In vivo* circadian function of casein kinase 2 phosphorylation sites in *Drosophila* PERIOD. *J. Neurosci.* **25**, 11175–11183 (2005).
- Burke, C. J. *et al.* Layered reward signalling through octopamine and dopamine in *Drosophila*. *Nature* **492**, 433–437 (2012).
- Nakamura, M., Baldwin, D., Hannaford, S., Palka, J. & Montell, C. Defective proboscis extension response (DPR), a member of the Ig superfamily required for the gustatory response to salt. *J. Neurosci.* **22**, 505–533 (2002).
- Hergarden, A. C., Tayler, T. D. & Anderson, D. J. Allatostatin-A neurons inhibit feeding behavior in adult *Drosophila*. *Proc. Natl. Acad. Sci. USA* **109**, 3967–3972 (2012).
- Reis, T., Van Gilst, M. R. & Hariharan, I. K. A buoyancy-based screen of *Drosophila* larvae for fat-storage mutants reveals a role for Sir2 in coupling fat storage to nutrient availability. *PLoS Genet.* **6**, e1001206 (2010).
- Edwards, A. C., Zwarts, L., Yamamoto, A., Callaerts, P. & Mackay, T. F. Mutations in many genes affect aggressive behavior in *Drosophila melanogaster*. *BMC Biol.* **7**, 29 (2009).

36. Glavan, G., Schliebs, R. & Zivin, M. Synaptotagmins in neurodegeneration. *Anat. Rec. (Hoboken)* **292**, 1849–1862 (2009).
37. Littleton, J. T. Molecular Genetic Characterization of the Drosophila Synaptotagmin Family PhD thesis. Massachusetts Institute of Technology (2005).
38. Staves, P. A. & Knell, R. J. Virulence and competitiveness: testing the relationship during inter- and intraspecific mixed infections. *Evolution* **64**, 2643–2652 (2010).
39. St Leger, R., Joshi, L., Bidochka, M. J. & Roberts, D. W. Construction of an improved mycoinsecticide overexpressing a toxic protease. *Proc. Natl. Acad. Sci. USA* **93**, 6349–6354 (1996).
40. Pava-Ripoll, M., Posada, F. J., Momen, B., Wang, C. & St Leger, R. Increased pathogenicity against coffee berry borer, *Hypothenemus hampei* (Coleoptera: Curculionidae) by *Metarhizium anisopliae* expressing the scorpion toxin (AaIT) gene. *J. Invertebr. Pathol.* **99**, 220–226 (2008).
41. Samuels, R. I., Charnley, A. K. & Reynolds, S. E. The role of destruxins in the pathogenicity of 3 strains of *Metarhizium anisopliae* for the tobacco hornworm *Manduca sexta*. *Mycopathologia* **104**, 51–58 (1988).
42. Ayres, J. S. & Schneider, D. S. A signaling protease required for melanization in *Drosophila* affects resistance and tolerance of infections. *PLoS Biol.* **6**, e305 (2008).
43. Wu, Y. *et al.* A blood-borne PDGF/VEGF-like ligand initiates wound-induced epidermal cell migration in *Drosophila* larvae. *Current Biology*. **19**(17), 1473–1477 (2009).
44. Garland, T. Trade-offs. *Curr. Biol.* **24**, R60–61 (2014).
45. Chamilos, G., Samonis, G. & Kontoyiannis, D. P. Recent advances in the use of *Drosophila melanogaster* as a model to study immunopathogenesis of medically important filamentous fungi. *Int. J. Microbiol.* 2012, 583792 (2012).
46. Weber, A. L. *et al.* Genome-wide association analysis of oxidative stress resistance in *Drosophila melanogaster*. *PLoS One* **7**, e34745 (2012).
47. Short, S. M. & Lazzaro, B. P. Female and male genetic contributions to post-mating immune defence in female *Drosophila melanogaster*. *Proc. Biol. Sci.* **277**, 3649–3657 (2010).
48. Haine, E. R., Moret, Y., Siva-Jothy, M. T. & Rolff, J. Antimicrobial defense and persistent infection in insects. *Science* **322**, 1257–1259 (2008).
49. Wang, C. & St Leger, R. J. A collagenous protective coat enables *Metarhizium anisopliae* to evade insect immune responses. *Proc. Natl. Acad. Sci.* **103**, 6647–6652 (2006).
50. Kurtti, T. J. & Keyhani, N. O. Intracellular infection of tick cell lines by the entomopathogenic fungus *Metarhizium anisopliae*. *Microbiology* **154**, 1700–1709 (2008).
51. Scherfer, C. *et al.* Isolation and characterization of hemolymph clotting factors in *Drosophila melanogaster* by a pullout method. *Curr. Biol.* **14**, 625–629 (2004).
52. Wang, Z. *et al.* Pathogen entrapment by transglutaminase-a conserved early innate immune mechanism. *PLoS Pathog.* **6**, e1000763, (2010).
53. St. Leger, R. J., Cooper, R. M. & Charnley, A. K. The effect of melanization of *Manduca sexta* cuticle on growth and infection by *Metarhizium anisopliae*. *Journal of Invertebrate Pathology* **52**, 11 (1988).
54. St. Leger, R. J., Charnley, A. K. & Cooper, R. M. Production of polyphenol pigments and phenoloxidase by the entomopathogen, *Metarhizium anisopliae*. *Journal of Invertebrate Pathology* **52**, 215–220 (1988).
55. Williams, M. J. *et al.* Regulation of aggression by obesity-linked genes TfAP-2 and Twz through octopamine signaling in *Drosophila*. *Genetics* **196**, 349–362 (2014).
56. Harbison, S. T., Yamamoto, A. H., Fanara, J. J., Norga, K. K. & Mackay, T. F. Quantitative trait loci affecting starvation resistance in *Drosophila melanogaster*. *Genetics* **166**, 1807–1823 (2004).
57. Rutschmann, S. *et al.* The Rel protein DIF mediates the antifungal but not the antibacterial host defense in *Drosophila*. *Immunity* **12**, 569–580 (2000).
58. Bellen, H. J. *et al.* The *Drosophila* gene disruption project: progress using transposons with distinctive site specificities. *Genetics* **188**, 731–743 (2011).
59. Wang, S., O'Brien, T. R., Pava-Ripoll, M. & St Leger, R. J. Local adaptation of an introduced transgenic insect fungal pathogen due to new beneficial mutations. *Proc. Natl. Acad. Sci. USA* **108**, 20449–20454 (2011).
60. Huang, d. W., Sherman, B. T. & Lempicki, R. A. Bioinformatics enrichment tools: paths toward the comprehensive functional analysis of large gene lists. *Nucleic Acids Res.* **37**, 1–13 (2009).

Acknowledgement

This work was supported by a seed grant from the Department of Entomology, University of Maryland. We thank Louisa Wu (University of Maryland) for providing the *Drs*-GFP fly line, and Dominique Ferrandon (Institut de Biologie Moléculaire et Cellulaire, Strasbourg) for providing *Dif^l* and its control line.

Author Contributions

R.J.S. and H.-L.L. wrote the manuscript and designed experiments. H.-L.L., J.B.W., M.A.B. and C.E. performed experiments. All authors reviewed the manuscript.

Additional Information

Supplementary information accompanies this paper at <http://www.nature.com/srep>

Competing financial interests: The authors declare no competing financial interests.

How to cite this article: Lu, H.-L. *et al.* Identification of *Drosophila* Mutants Affecting Defense to an Entomopathogenic Fungus. *Sci. Rep.* **5**, 12350; doi: 10.1038/srep12350 (2015).



This work is licensed under a Creative Commons Attribution 4.0 International License. The images or other third party material in this article are included in the article's Creative Commons license, unless indicated otherwise in the credit line; if the material is not included under the Creative Commons license, users will need to obtain permission from the license holder to reproduce the material. To view a copy of this license, visit <http://creativecommons.org/licenses/by/4.0/>