



SUBJECT AREAS:  
EMBRYOGENESIS  
AUTOPHAGY

## CORRIGENDUM: Fluorescence-based visualization of autophagic activity predicts mouse embryo viability

Satoshi Tsukamoto, Taichi Hara, Atsushi Yamamoto, Seiji Kito, Naojiro Minami, Toshiro Kubota, Ken Sato & Toshiaki Kokubo

SCIENTIFIC REPORTS:  
4 : 4533  
DOI: 10.1038/srep04533  
(2014)

This Article contains an error in Figure 1C. The RFP image under '2-cell, -' is a duplication of the RFP image under '2-cell, +'.  
Additionally, the article contains an error in Figure 2A. The GFP-LC3 and RFP image under '2-cell, 2months' should be the same as the DIC image under '2-cell, 2months'.

The correct Figures 1C and Figure 2A appear below as Figure 1 and Figure 2 respectively.

Published:  
31 March 2014

Updated:  
26 August 2014

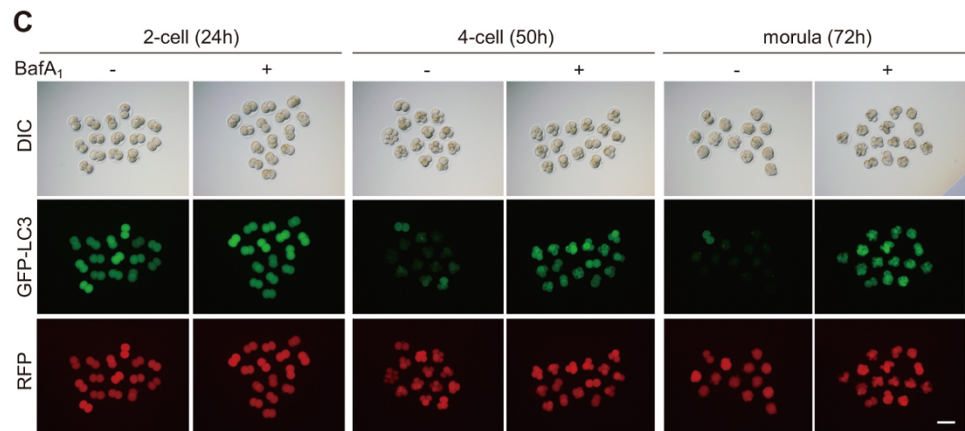


Figure 1 |

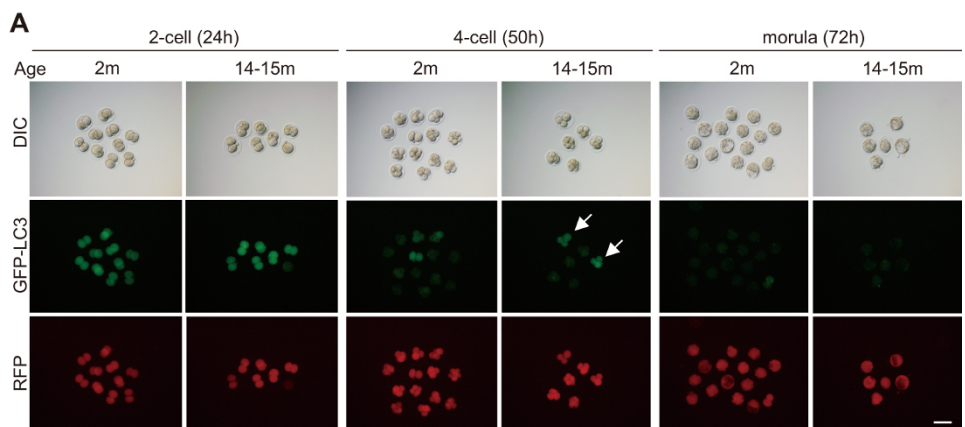


Figure 2 |