



OPEN

SUBJECT AREAS:
ENVIRONMENTAL
SCIENCES
CELL DEATHReceived
7 April 2014Accepted
14 July 2014Published
30 July 2014Correspondence and
requests for materials
should be addressed to
G.-W.H. (gwhwang@
m.tohoku.ac.jp)

The protein transportation pathway from Golgi to vacuoles via endosomes plays a role in enhancement of methylmercury toxicity

Gi-Wook Hwang, Yasutaka Murai, Tsutomu Takahashi & Akira Naganuma

Laboratory of Molecular and Biochemical Toxicology, Graduate School of Pharmaceutical Sciences, Tohoku University, Sendai 980-8578, Japan.

Methylmercury causes serious damage to the central nervous system, but the molecular mechanisms of methylmercury toxicity are only marginally understood. In this study, we used a gene-deletion mutant library of budding yeast to conduct genome-wide screening for gene knockouts affecting the sensitivity of methylmercury toxicity. We successfully identified 31 genes whose deletions confer resistance to methylmercury in yeast, and 18 genes whose deletions confer hypersensitivity to methylmercury. Yeast genes whose deletions conferred resistance to methylmercury included many gene encoding factors involved in protein transport to vacuoles. Detailed examination of the relationship between the factors involved in this transport system and methylmercury toxicity revealed that mutants with loss of the factors involved in the transportation pathway from the *trans*-Golgi network (TGN) to the endosome, protein uptake into the endosome, and endosome-vacuole fusion showed higher methylmercury resistance than did wild-type yeast. The results of our genetic engineering study suggest that this vesicle transport system (proteins moving from the TGN to vacuole via endosome) is responsible for enhancing methylmercury toxicity due to the interrelationship between the pathways. There is a possibility that there may be proteins in the cell that enhance methylmercury toxicity through the protein transport system.

Methylmercury is a major environmental pollutant. Because it is highly lipophilic and easily penetrates the blood-brain barrier, its excessive consumption causes serious central nervous system (CNS) damage, including sensory paralysis, speech disorders, motor ataxia, restricted vision, and impaired hearing¹. Neurobehavioral consequences have recently been found in children born to mothers whose diet during pregnancy included large amounts of fish known to accumulate high levels of methylmercury; the severity of neurobehavioral symptoms is reported to be highly correlated with the level of methylmercury intake during pregnancy^{2,3}. Because brain development in human embryos is highly sensitive to methylmercury toxicity, it is believed that the function of the embryonic brain is affected by smaller quantities of methylmercury compared to the adult brain. Therefore, foetal consequences of methylmercury are a serious global problem^{4,5}. However, little is known about the molecular mechanisms of methylmercury toxicity and cellular protective mechanisms against such toxicity.

To clarify the molecular mechanisms of methylmercury toxicity, we screened for intracellular proteins affecting the sensitivity of methylmercury toxicity in budding yeast (*Saccharomyces cerevisiae*). Budding yeast is an ideal model because it is a eukaryotic unicellular organism and maintains many gene functions in common with humans and other mammals. We successfully identified several genes that confer resistance to methylmercury when overexpressed in yeast in previous work⁶⁻¹⁰. However, it is expected that yeast cells have many more proteins that may affect the manifestation of methylmercury toxicity. In this study, we aim to clarify the molecular mechanisms of methylmercury toxicity as well as biological defence mechanisms against such toxicity. We conducted a genome-wide screening for genes whose deletions affect the sensitivity of budding yeast to methylmercury using a gene-deletion mutant library of the *S. cerevisiae* strain BY4742¹¹.



Table 1 | Genes whose deletion cause resistance to methylmercury

Functional group	Gene name	ORF	Description of gene product	IC50 of deletion cells/IC50 of control cells	
Metabolic pathway	<i>ACO2</i>	YJL200C	Aconitase	1.29	
	<i>ALD6</i>	YPL061W	Aldehyde dehydrogenase	1.31	
	<i>MET25</i>	YLR303W	O-acetyl homoserine-O-acetyl serine sulfhydrylase	1.64	
Protein degradation	<i>BAR1</i>	YIL015W	Aspartyl protease	1.29	
	<i>BRE5</i>	YNR051C	Ubiquitin protease cofactor	1.18	
	<i>ELA1</i>	YNL230C	F-box protein	1.24	
	<i>SKP2</i>	YNL311C	F-box protein	1.39	
	<i>RAV2</i>	YDR202C	Regulator of (H ⁺)-ATPase	1.31	
	<i>UBP16</i>	YPL072W	Ubiquitin-specific protease	1.31	
	<i>VID28</i>	YIL017C	Vacuolar degradation	1.23	
	<i>RHR2</i>	YIL053W	DL-glycerol-3-phosphatase	1.34	
	<i>SAP190</i>	YKR028W	Type 2A-related protein phosphatase	1.33	
	Protein phosphorylation	<i>ACE2</i>	YLR131C	Transcription factor	1.44
Transcription	<i>MET31</i>	YPL038W	Sulphur amino acid metabolism	1.18	
	<i>NAM2</i>	YLR382C	Leucyl-tRNA synthetase	1.42	
	<i>RPD3</i>	YNL330C	Histone deacetylase	1.14	
	<i>RRP8</i>	YDR083W	rRNA processing	1.17	
	<i>TRM1</i>	YDR120C	tRNA methyltransferase	1.16	
	Vacuoles and vesicular transport	<i>SNF8</i>	YPL002C	Component of the ESCRT-II complex	1.31
		<i>VPS4</i>	YPR173C	AAA-type ATPase	1.10
		<i>VPS28</i>	YPL065W	Component of the ESCRT-I complex	1.14
		<i>VPS45</i>	YGL095C	Vacuolar protein sorting	1.79
		<i>VPS63</i>	YLR261C	Vacuolar protein sorting	1.76
<i>VPS68</i>		YOL129W	Vacuolar protein sorting	1.25	
<i>VTA1</i>		YLR181C	Endosomal protein sorting	1.29	
Unknown function or poorly characterised		<i>BUD22</i>	YMR014W	Bud-site selection	1.57
		<i>IRS4</i>	YKR019C	Silencing of ribosomal DNA	1.27
		<i>NNF2</i>	YGR089W	Unknown function	1.23
	<i>RNY1</i>	YPL123C	Ribonuclease	1.94	
	<i>RPS0B</i>	YLR048W	Component of the small (40S) ribosomal subunit	1.18	
	<i>YKE4</i>	YLR023C	Unknown function	1.40	

Results

Screening for genes whose deletion affects the sensitivity of yeast to methylmercury. The *S. cerevisiae* genome contains approximately 6000 genes, and yeast is able to survive single-gene knockouts in the case of 4850 of these genes. We used the 4850 single-gene mutants and conducted genome-wide screening for genes whose deletions affected the sensitivity of the yeast to methylmercury. In this screen, each gene deletion mutant was cultured for 24 or 48 hrs in a liquid medium containing 60 nM of methylmercuric chloride. When wild-type yeast was cultured in the presence of 60 nM of methylmercuric chloride, minimal growth was observed after 24 hrs due to delayed growth in the presence of methylmercury. However, wild-type cultures were approximately fully grown 48 hrs later. In this study, we designated the gene deletion mutants showing growth after 24 hrs of culture in the medium containing methylmercuric chloride as putative methylmercury-resistant strains and those not showing full growth even after 48 hrs of culture as putative methylmercury hypersensitive strains. Yeast cells of each putative strain were cultured in liquid media containing various concentrations of methylmercury and their sensitivity to methylmercury was compared with that of the wild-type yeast strain. Overall, 31 strains were found to be resistant to methylmercury and 18 strains appeared to be hypersensitive. In short, we identified 31 genes whose deletions confer methylmercury resistance in yeast and 18 genes whose deletions confer hypersensitivity to methylmercury. Genes whose deletions were found to confer resistance to methylmercury included genes encoding transcription-associated factors (*Ace2*, *Met31*), ubiquitin-proteasome system-related factors (*Bre5*, *Ubp16*, *Skp2*), ribosome-related factors (*Irs4*, *Rps0b*), factors involved in protein transportation to vacuoles via endosomes (*Snf8*, *Vps4*, *Vps28*, *Vps45*, *Vps63*, *Vps68*, *Vta1*), and translation-related factors (*Nam2*, *Rrp8*, *Trm1*) (Table 1). Genes whose deletions

conferred hypersensitivity to methylmercury included genes encoding protein phosphorylation enzyme components (*Ckb2*, *Pfk1*) and transporters (*Bap2*, *Fps1*) (Table 2). We also quantified the impact of each gene deletion identified in this study on the methylmercury sensitivity of yeast by investigating methylmercury concentration inhibiting yeast growth by 50% (IC₅₀). Among the genes identified in this study, our results showed that deletion of *RNY1*, *VPS45*, or *VPS63* conferred strong resistance to methylmercury on yeast (Table 1) but that deletion of *YHR029C*, *YJL120W*, or *FPS1* markedly enhanced yeast sensitivity to methylmercury (Table 2). Figure 1 shows the sensitivity of each deletion mutant of the six genes for methylmercury toxicity.

All of the proteins identified in this study were found to be involved in methylmercury toxicity. The functions of these proteins are classified into many types, suggesting that the sensitivity of yeast cells to methylmercury is determined using the combinatorial contributions of many protein functions.

Of particular note, during our analysis of methylmercury toxicity, we identified many genes encoding factors involved in protein transportation to vacuoles via endosomes. Therefore, we performed further analysis of the relationship between methylmercury toxicity and the protein transportation system.

Relationship between methylmercury toxicity and protein transportation systems to vacuoles via endosomes. There are two types of proteins transported to vacuoles via endosomes; one becomes functional in the vacuole, and the other is degraded in the vacuole¹². Membrane proteins such as signalling receptors and transporters are incorporated into the cell by endocytosis and then transported to the vacuole via the endosome and degraded, resulting in regulation of their cell surface abundance^{12,13}. Newly synthesised membrane proteins in the cell are transported to the trans-Golgi



Table 2 | Genes whose deletion causes hypersensitivity to methylmercury

Functional group	Gene name	ORF	Description of gene product	IC50 of deletion cells/IC50 of control cells
Metabolic pathway	<i>PSD2</i>	YGR170W	Phosphatidylserine decarboxylase	0.78
	<i>RPE1</i>	YJL121C	D-ribulose-5-phosphate 3-epimerase	0.67
	<i>ETR1</i>	YBR026C	2-enoyl thioester reductase	0.68
Protein phosphorylation	<i>CKB2</i>	YOR039W	Subunit of the casein kinase 2	0.65
	<i>PFK1</i>	YGR240C	Subunit of the phosphofructokinase	0.74
Transporter	<i>BAP2</i>	YBR068C	Branched-chain Amino acid Permease	0.75
	<i>FPS1</i>	YLL043W	Glycerol channel protein	0.54
Transcription	<i>CDC39</i>	YCR093W	Transcription factor	0.72
	<i>BRE2</i>	YLR015W	Subunit of the COMPASS (Set1C) complex	0.76
Unknown function or poorly characterised	<i>GYP1</i>	YOR070C	GTPase-activating protein	0.68
	<i>VMA1</i>	YDL185W	Vacuolar ATPase V1 domain subunit A	0.78
	<i>YDJ1</i>	YNL064C	Protein chaperone	0.74
	<i>YDL173W</i>	YDL173W	Unknown function	0.89
	<i>YHR029C</i>	YHR029C	Unknown function	0.33
	<i>YJL120W</i>	YJL120W	Unknown function	0.52
	<i>YLL014W</i>	YLL014W	Unknown function	0.71
	<i>YLR111W</i>	YLR111W	Unknown function	0.78
	<i>YOL087C</i>	YOL087C	Unknown function	0.55

network (TGN) from the endoplasmic reticulum via the Golgi body. They are subsequently sorted in the TGN. Some proteins are transported to the cell membrane to become functional there, and the rest are transported to the vacuole via the endosome and degraded. Six pathways are involved in protein transportation to vacuoles: 1) a transportation pathway from the endoplasmic reticulum to the TGN, 2) a direct transportation pathway from the TGN to vacuoles (the alkaline phosphatase (ALP) pathway), 3) a transportation pathway from the TGN to endosomes, 4) the uptake of proteins into endosomes (the multivesicular body (MVB) sorting pathway), 5) endocytosis, and 6) endosome-vacuole fusion^{12,13} (Figure 2a). Our study showed that proteins involved in the transportation pathway from the TGN to endosomes (Vps45 and Vps68) and those involved in the MVB sorting pathway (Snf8, Vps4, Vps28, and Vta1) play a role in the enhancement of methylmercury toxicity. However, because this study used a simple screening method conducted in the presence of a fixed concentration of methylmercury (60 nM), some factors involved in the protein transportation pathway from the TGN to vacuoles may not be detected despite potentially impacting methylmercury toxicity. To elucidate the relationship between methylmercury toxicity and proteins involved in the protein transportation pathway from the TGN to vacuoles and to identify the pathway playing a role in the enhancement of methylmercury toxicity among those transportation pathways, we investigated the sensitivity of each gene deletion mutant to proteins known to be involved in those pathways. Several single-gene deletion mutants have a similar level of sensitivity to methylmercury as do wild-type yeast. These include, the genes encoding Apl5 and Apl6, both of which are involved in the pathway for direct transportation of substrate proteins from the TGN to vacuoles without passing through endosomes (the second pathway, as previously listed) and the genes encoding End3, Ent1, Ent2, and Ent4, all of which are involved in endocytosis (the fifth pathway, as previously listed; data not shown). Based on these results, it appears that neither of these pathways is involved in methylmercury toxicity enhancement. A subset of single-gene deletion mutants showed higher resistance to methylmercury compared to wild-type yeast. These included genes encoding Vps45 and Pep12, both of which are involved in transportation from the TGN to endosomes (the third pathway, as previously listed), genes encoding Vps27, Hse1, Stp22, Srn2, Vps28, Vps36, Vps25, Snf8, Did4, Vps20, Vps24, Snf7, and Doa4, all of which are involved in the MVB sorting pathway (the fourth pathway, as previously listed), and genes encoding Vam3 and Vam7, both of

which are involved in endosome-vacuole fusion (the sixth pathway previously listed; Figure 2b). We also examined the methylmercury sensitivity of yeast cells with genetic deletion of Ypt7 and Mon1, which are involved in the same pathway as Vam3 and Vam7. However, these deletion mutants did not affect the yeast's sensitivity to methylmercury. It has been reported that the knockout of Ypt7 or Mon1 inhibited approximately 50% of vacuole transport activity and that the knockout of Vam3 or Vam7 inhibited a majority of vacuole transport activity¹⁴. Therefore, Ypt7 and Mon1 may not be essential for vacuole transport pathway via Vam3 and Vam7. From these results, it appears that the protein transportation system from the TGN to vacuoles via endosomes is involved in the enhancement of methylmercury toxicity. However, the three pathways identified in the enhancement of methylmercury toxicity (pathways three, four, and six) may enhance toxicity independently via different mechanisms. Therefore, we prepared double deletion mutants with deletions of Vps45 (involved in transportation from the TGN to endosomes) or Vam7 (involved in endosome-vacuole fusion) in addition to the deletion of the Vps27 gene involved in the MVB sorting pathway (*vps45Δ vps27Δ* and *vps27Δ vam7Δ*) and studied their sensitivity to methylmercury. In this experiment, we selected Vps27 as the key factor of the MVB sorting pathway because Vps27 is known to function upstream in the MVB sorting pathway. Single-gene deletion mutants with *VPS27*, *VPS45*, or *VAM7* showed strong resistance to methylmercury. However, an additive increase in resistance level was not observed during double deletion of *VPS45* and *VPS27* (Figure 3a) or *VPS27* and *VAM7* (Figure 3b). These results suggest that transportation from the TGN to endosomes (pathway three), the MVB sorting pathway (pathway four), and endosome-vacuole fusion (pathway six), are jointly involved in the enhancement of methylmercury toxicity. Therefore there may be proteins in the cell that enhance methylmercury toxicity via transportation from the TGN to vacuoles via endosomes.

Role of substrate recognition proteins in the MVB sorting pathway. As shown in Figure 2b, deletion of any single protein involved in the MVB sorting pathway conferred resistance to methylmercury in yeast. Vps27-Hse1 (a complex existing on the endosome membrane) and its downstream factor ESCRT (Endosomal Sorting Complex Required for Transport, consisting of Stp22, Srn2, Vps28, Vps36, Vps25, Snf8, Did4, Vps20, Vps24, and Snf7 shown in Figure 2b) are both involved in the MVB sorting pathway^{15,16}. Substrate proteins of the MVB sorting

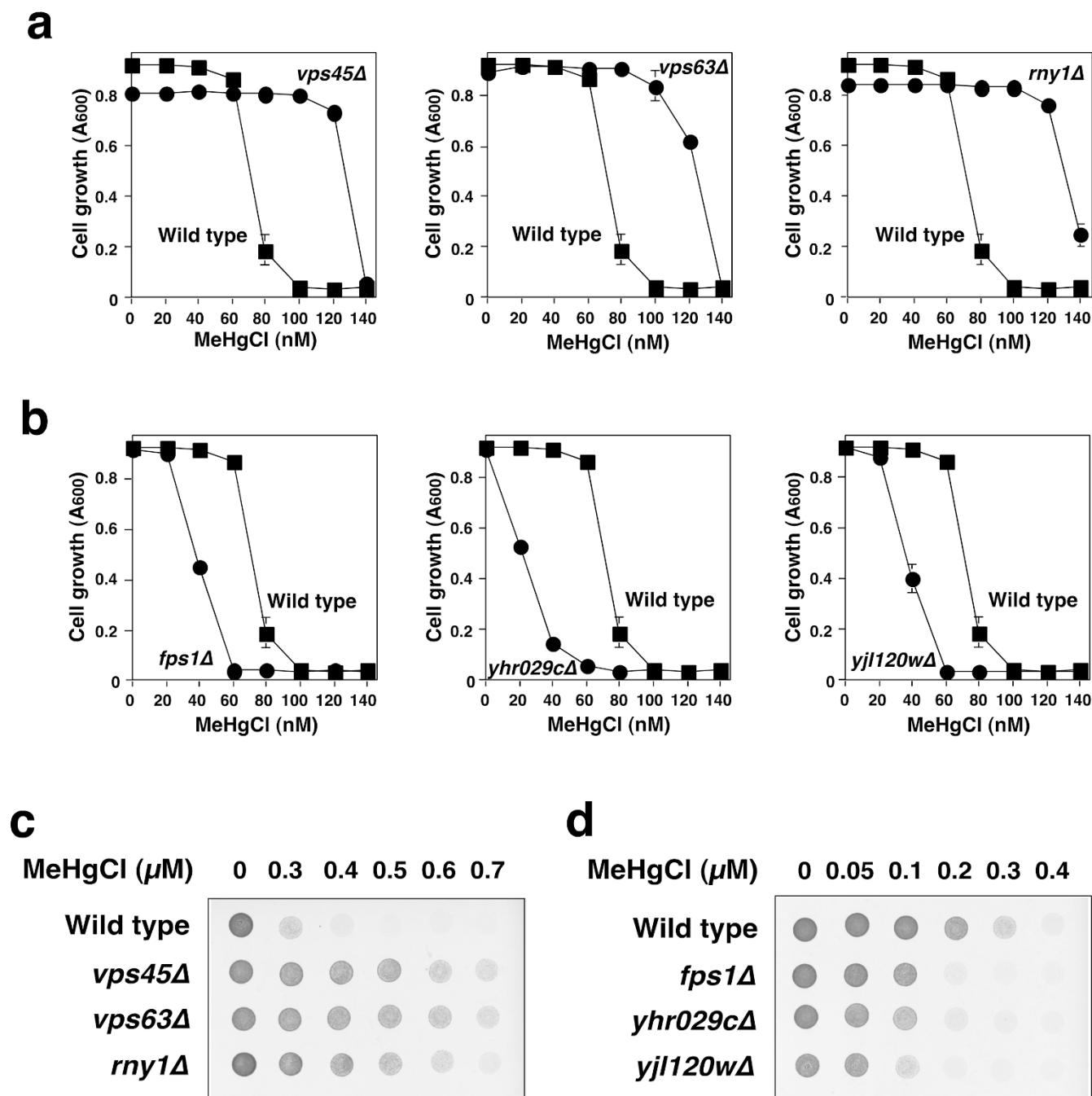


Figure 1 | Effect of gene deletion on the sensitivity of yeast cells to methylmercury (MeHgCl). (a, b) Yeast cells (10^4 cells/200 μl /well) were grown in synthetic dextrose (SD) liquid media that contained methylmercuric chloride at the indicated concentrations. After incubation for 48 hrs (a) or 24 hrs (b) at 30°C , absorbance was measured spectrophotometrically at 600 nm. Each point represents the mean value \pm SD of results from three cultures (bars). The absence of a bar indicates that the SD falls within the symbol. (c, d) Yeast cells (10^6 cells/ml) were grown in SD liquid media that contained methylmercuric chloride at the indicated concentrations. After incubation for 3 hrs at 30°C , cells from each strain were diluted in sterilised water to 10^7 cells/ml. Five microlitres of each of the resulting cell suspensions were spotted on agar-solidified SD media. Plates were photographed after incubation for 24 hrs at 30°C . Three separate experiments were performed with reproducible results.

pathway first undergo monoubiquitination in the cell, which serves as the recognition signal for the Vps27-Hse1 complex. After recognition, the protein is transferred to ESCRT. The *HSE1* deletion mutant showed weaker methylmercury resistance than the *VPS27* deletion mutant or deletion mutants of genes encoding other proteins within the MVB sorting pathway (Figure 2b).

Next, we prepared a double-deletion mutant for Vps27 and Hse1 (*vps27* Δ *hse1* Δ), which showed a similar level of methylmercury resistance as the *VPS27* single-deletion mutant (Figure 3c). This

indicates that the presence of Vps27 is necessary for acquired methylmercury resistance following *HSE1* deletion. Hse1 binds directly to Vps27 at amino acids 416–418¹⁷. Therefore, Hse1 may not be essential for substrate protein recognition in the MVB sorting pathway. However, Hse1 may play a role in enhancing the activity of Vps27 by binding to Vps27.

Vps27 contains a VHS (for V_{ps}27, H_{rs} and S_{TAM}; 1–145 amino acids) domain involved in substrate recognition, the FYVE (for Fab1, Y_{GL}023, V_{ps}27, and E_{EA}1; 168–231 amino acids) domain, which is

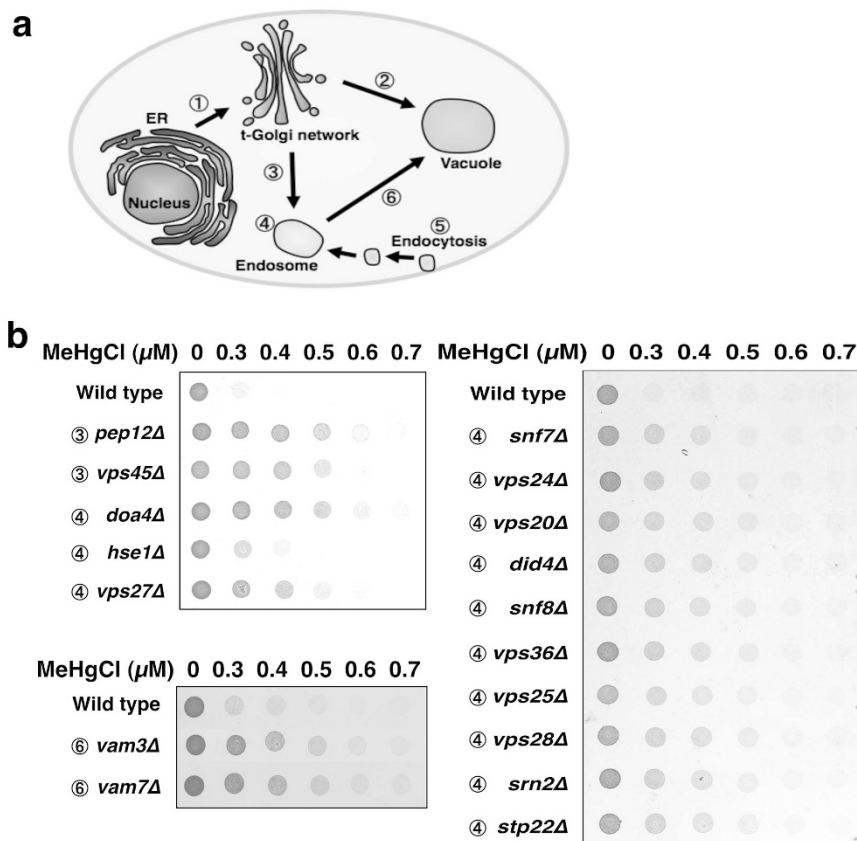


Figure 2 | Effect of gene deletions involved in intracellular trafficking on the sensitivity of yeast cells to methylmercury. Yeast cells (10^6 cells/ml) with deletions of the indicated genes were grown in SD liquid media with or without methylmercuric chloride at the indicated concentrations. After incubation for 3 hrs at 30°C , cells of each strain were diluted in sterilised water to 10^7 cells/ml. Five microlitres of each of the resulting cell suspensions were spotted on agar-solidified SD media. For further details, refer to the Figure 1c legend.

necessary for binding to phosphatidylinositol 3-phosphate on endosome membranes, and two UIM (Ubiquitin-Interacting Motifs; 257–274 amino acids and 300–317 amino acids) domains that bind to ubiquitinated proteins (Figure 4a)¹⁸. To study the relationship between these domains and the methylmercury toxicity enhancement shown by Vps27, we investigated methylmercury sensitivity in mutants with single-domain deletions of Vps27 fused to an HA tag (Figure 4c). The methylmercury resistance shown by the *VPS27*-deletion mutant disappeared in yeast expressing wild-type HA-Vps27. However, the expression of mutant Vps27 protein with the FYVE domain deleted (HA-Vps27^{FYVEΔ}) only minimally affected methylmercury resistance in the *VPS27* deletion mutant. This result indicates that the FYVE domain is essential for the enhancement of methylmercury toxicity shown by Vps27. When the VHS domain deleted Vps27 (HA-Vps27^{VHSA}) or double UIM domain deleted Vps27 (HA-Vps27^{UIM1Δ+UIM2Δ}) were expressed in the *VPS27* deletion mutant, a significant reduction in resistance level was observed. However, the decrease in resistance level in both mutants was smaller than that in the mutant expressing wild-type HA-Vps27 (Figure 4c). Based on these results, the function of Vps27 on endosome membranes is essential for Vps27 to enhance methylmercury toxicity and the Vps27 substrate recognition function (VHS domain) and binding ability to ubiquitinated proteins (UIM domain) play a lesser role in enhancing methylmercury toxicity. Vps27 proteins lacking the VHS domain may be able to bind to substrate proteins with reduced efficiency via the two UIM domains. Hrs, a mammalian homologue of Vps27, is able to bind to ubiquitin via the VHS domain¹⁹, and the Hse1-Vps27 complex also contains the UIM domain in its structure²⁰. Therefore, when both UIM domains are deleted, the VHS domain in Vps27 or the UIM domain in Hse1 may take on their role.

Discussion

In this study, we conducted a genome-wide screen using a gene-deletion mutant library and successfully identified many genes affecting methylmercury sensitivity in yeast. In the future, it is expected that a detailed examination of the role of each of these proteins in methylmercury toxicity may provide a useful clue to elucidate the molecular mechanisms of methylmercury toxicity.

The genes whose deletions confer methylmercury resistance in yeast include four genes encoding proteins involved in the ubiquitin-proteasome system, representing a selective proteolytic pathway (*BRE5*, *ELA1*, *SIP2*, *UBP16*; Table 1). In a previous study, we found that yeast gains resistance to methylmercury by enhancing proteolysis in this ubiquitin-proteasome system²¹. Among the genes identified in this study, *BRE5*²⁰ and *UBP16*²² encode enzymes involved in deubiquitination of proteins. In a cell, the dissociation of ubiquitin from proteins occurs via deubiquitinating enzymes, resulting in regulation of protein levels. When deubiquitinating enzymes such as *BRE5*, *ELA1*, *SIP2*, and *UBP16* are deleted, proteolysis via ubiquitination at the proteasome is promoted. It is possible that through this process, yeast may show resistance to methylmercury.

In this study, genes whose deletion increased methylmercury sensitivity were also successfully identified. These include genes encoded transporters of branched-chain amino acids (Bap2) and glycerol (Fpsl). Because Fpsl is involved in the exocytosis of metal ions, including As^{3+} and Sb^{2+23} , these proteins may enhance elimination of methylmercury from the cell. We also measured the accumulation of mercury in the cell when *FPS1* knockouts or *BAP2* knockouts were treated with methylmercury. Because we did not observe a significant difference in accumulation between the two mutants and the wild-type yeast (data not shown), the hypersensitivity of yeast to methyl-

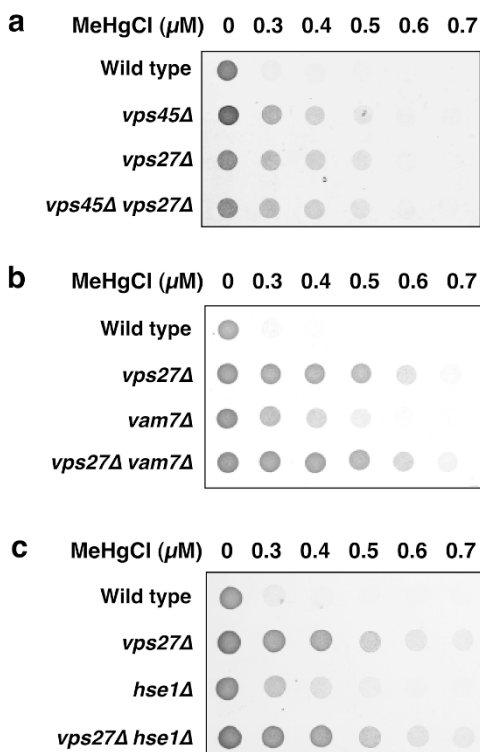


Figure 3 | Effect of simultaneous deletion of two genes involved in different parts of intracellular protein trafficking on the sensitivity of yeast cells to methylmercury. (a, b, c) Yeast cells (10^6 cells/ml) with deletions of the indicated gene(s) were grown in SD liquid media with or without methylmercuric chloride at the indicated concentrations. After incubation for 3 hrs at 30°C , cells from each strain were diluted in sterilised water to 10^7 cells/ml. Five microlitres of each of the resulting cell suspensions were spotted on agar-solidified SD media. For further details, refer to the Figure 1c legend.

mercury resulting from *FPS1* knockout or *BAP2* knockout could not be attributed to an increase in the accumulation of methylmercury in the cell.

Our study revealed that deletion of any single protein involved in the protein transportation pathway from the TGN to vacuoles via endosomes (Figure 2a; pathways three, four, and six as previously stated) makes yeast highly resistant to methylmercury (Figure 2b). This shows that the protein transport pathways are deeply involved in the enhanced toxicity of methylmercury (Figure 3). There are transport pathways from the endoplasmic reticulum to the TGN at the starting point of this transport system (pathway one, as previously stated; Figure 2a). Because many proteins involved in this pathway (pathway one) are essential for the survival of yeast and thus difficult to delete, a detailed examination of the relationship between this pathway and methylmercury toxicity was not carried out in this study. However, there are a few proteins involved in the transport pathway from the endoplasmic reticulum to the TGN, for example, *Emp24* and *Emp47*, whose deletions do not affect the survival of yeast. We investigated the impact of *EMP24* or *EMP47* deletions on the sensitivity of yeast to methylmercury, but minimal impact was observed (data not shown). Although some abnormalities in protein transportation are observed in *EMP24* deletion yeast, ALP and carboxypeptidase Y (CPY) are transported normally²⁴. In addition, a protein that is functionally equivalent to *Emp47* exists in the cell²⁵. More detailed examination is required to determine the relationship between methylmercury toxicity and the transportation pathway from the endoplasmic reticulum to the TGN.

It has been reported that methylmercury damages lysosomes (corresponding to vacuoles in yeast) in human astrocytoma cells and

causes cell death²⁶. Because protein transportation pathways from the TGN to vacuoles (lysosomes) via endosomes are conserved in a wide variety of organisms ranging from yeast to humans, methylmercury may impact this transportation pathway by causing damage to the function of vacuoles, resulting in cell death. However, there have been no reports that protein transportation systems to vacuoles are involved in methylmercury toxicity; the present study provides telling clues for the elucidation of the molecular mechanisms of methylmercury toxicity.

The MVB sorting pathway for endosomes is involved in making cellular decisions regarding whether to reuse substrate proteins or send them to vacuoles for degradation and processing. In this MVB sorting pathway, *Vps27* plays a crucial role in recognising substrate proteins. Our data suggest that the binding of *Vps27* to the endosome membrane is essential for *Vps27* enhanced methylmercury toxicity and that the substrate recognition function of *Vps27* and its ability to bind ubiquitinated proteins also play crucial roles (Figure 4). It is thought that cells have proteins that enhance methylmercury toxicity via transportation from the TGN to vacuoles via endosomes and that during this transportation, the proteins may be recognised as substrates of the MVB sorting pathway that exists on the endosome. Although the results of the present study suggest that the proteins involved in the protein transportation system via the MVB sorting pathway are likely to be associated with methylmercury toxicity in yeast, the exact mechanism remains to be explained.

Recent evidence suggests that the ubiquitin modification of proteins functions as an important signal not only in proteolysis at the proteasome but also for intracellular membrane trafficking and the proteolysis process in lysosomes^{27,28}. In the MVB sorting pathway, which was found to be involved in methylmercury toxicity enhancement during this study, ubiquitin modification is known to play a vital role as a recognition signal for substrate proteins²⁹. It has also been reported that proteasome activity is necessary for protein uptake into endosomes by the MVB sorting pathway³⁰. Therefore, it is difficult to deny the possibility that the function of the MVB sorting pathway is regulated by the ubiquitin-proteasome system. We have identified *Cdc34*⁶ and *Rad23*⁹ as ubiquitin-proteasome system-related factors involved in the reduction of methylmercury toxicity. Methylmercury resistance was observed during the overexpression of *Cdc34* or *Rad23* in wild-type yeast and was similarly observed when *Cdc34* or *Rad23* was highly expressed in *VPS27* defective yeast (data not shown). From these findings, it is thought that the MVB sorting pathway is not involved in the resistance acquired by overexpression of *Cdc34* or *Rad23*.

We have also reported that overexpression of *Bop3* (a protein of unknown function)⁷ or L-glutamine:D-fructose-6-phosphate amidotransferase (*GFAT*)¹⁰ confer resistance to methylmercury in yeast. Yeast cells overexpressing *Bop3* or *GFAT* showed methylmercury resistance even when *Vps27* was disrupted (data not shown). Therefore, the MVB sorting pathway might not participate in the acquired resistance by overexpression of *Bop3* or *GFAT*.

The present study suggests that there may be proteins in the cell that enhance methylmercury toxicity through transportation from the TGN to vacuoles via the MVB sorting pathway. It has been reported that yeast strains lacking the genes involved in the MVB sorting pathway have a higher sensitivity to hygromycin B³¹, bleomycin³², fluconazole³³, tunicamycin³³, metansulfonate³⁴, and *tert*-butyl hydroperoxide³⁴ than do wild-type yeast, suggesting that the MVB sorting pathway may play a role as a defence mechanism against various toxins. However, our study revealed that methylmercury toxicity is enhanced by the protein transport system from TGN to vacuoles via endosomes (including the MVB sorting pathway). We know of no other toxic substances whose toxicity is enhanced by the protein transport system. The protein transport system is believed to show specific toxicity-enhancing action for methylmercury.



resistance gene. Consequently, the PCR product was introduced into the *vps27::KanMX* strain from the EUROSCARF deletion strain collection to construct the *vps27::HIS5* disruptant. Replacement of the gene was verified via PCR analysis with primers VPS27-F1 (5'-CTCGTAATCTGTATCATGCAATTT-3') and VPS27-R1 (5'-TATGCAGGAACAAGTTTCTTCC-3'). Subsequently, using genomic DNA of *vps27::HIS5* strain as the template, the PCR product was used to transform *vps45::KanMX*, *vam3::KanMX*, *vam7::KanMX*, and *hse1::KanMX* strains from the EUROSCARF deletion strain collection to construct the *vps27::HIS5 vps45::KanMX*, *vps27::HIS5 vam3::KanMX*, *vps27::HIS5 vam7::KanMX*, and *vps27::HIS5 hse1::KanMX* double disruptants, respectively. Disruption of the gene was verified via PCR using primers VPS27-F2 (5'-TGCTGCCAAACTAAACCAAG-3') and VPS27-R2 (5'-AAAGAGCTGCAGGAAGAACAAG-3').

Immunoblotting. Immunoblotting was performed as previously described⁹. Yeast cells (10^7 cells/ml) were grown in 10 ml of SD liquid media for 3 hrs and harvested. Approximately 50 μ l of cell pellet was suspended in 0.2 to 0.3 ml of Buffer C [20 mM of Tris-HCl (pH 7.5), 1 mM of EDTA, 5 mM of MgCl₂, 50 mM of KCl, 5% glycerol, 3 mM of DTT, 1 mM of phenylmethylsulfonyl fluoride, and 1 μ g/ml of pepstatin A] and lysed with glass beads (425–600 μ m; Sigma, St. Louis, MO, USA) in a cell disruptor (Micro Smash™ MS-100R; Tomy, Tokyo, Japan). Cell extracts were adjusted to equal the volumes and concentrations of the protein and analysed using immunoblotting. HA-Vps27 was visualised with HA-specific monoclonal primary antibodies (Roche, Basel, Switzerland) and peroxidase-conjugated goat secondary antibodies against rat immunoglobulins (Dako A/S, Glostrup, Denmark).

1. Yuan, Y. Methylmercury: a potential environmental risk factor contributing to epileptogenesis. *Neurotoxicology* **33**, 119–126 (2012).
2. Grandjean, P. et al. Cognitive deficit in 7-year-old children with prenatal exposure to methylmercury. *Neurotoxicol. Teratol.* **19**, 417–428 (1997).
3. Murata, K., Weihe, P., Araki, S., Budtz-Jorgensen, E. & Grandjean, P. Evoked potentials in Faroese children prenatally exposed to methylmercury. *Neurotoxicol. Teratol.* **21**, 471–472 (1999).
4. Mozaffarian, D. & Rimm, E. B. Fish intake, contaminants, and human health: evaluating the risks and the benefits. *JAMA* **296**, 1885–1899 (2006).
5. Schrope, M. US to take temperature of mercury threat. *Nature* **409**, 124 (2001).
6. Furuchi, T., Hwang, G. W. & Naganuma, A. Overexpression of the ubiquitin-conjugating enzyme Cdc34 confers resistance to methylmercury in *Saccharomyces cerevisiae*. *Mol. Pharmacol.* **61**, 738–741 (2002).
7. Hwang, G. W., Furuoya, Y., Hiroshima, A., Furuchi, T. & Naganuma, A. Overexpression of Bop3 confers resistance to methylmercury in *Saccharomyces cerevisiae* through interaction with other proteins such as Fkh1, Rts1, and Msn2. *Biochem. Biophys. Res. Commun.* **330**, 378–385 (2005).
8. Hwang, G. W., Ishida, Y. & Naganuma, A. Identification of F-box proteins that are involved in resistance to methylmercury in *Saccharomyces cerevisiae*. *FEBS Lett.* **580**, 6813–6818 (2006).
9. Hwang, G. W., Sasaki, D. & Naganuma, A. Overexpression of Rad23 confers resistance to methylmercury in *Saccharomyces cerevisiae* via inhibition of the degradation of ubiquitinated proteins. *Mol. Pharmacol.* **68**, 1074–1078 (2005).
10. Miura, N. et al. Overexpression of L-glutamine:D-fructose-6-phosphate amidotransferase provides resistance to methylmercury in *Saccharomyces cerevisiae*. *FEBS Lett.* **458**, 215–218 (1999).
11. Giaever, G. et al. Functional profiling of the *Saccharomyces cerevisiae* genome. *Nature* **418**, 387–391 (2002).
12. Kucharczyk, R. & Rytka, J. *Saccharomyces cerevisiae*—a model organism for the studies on vacuolar transport. *Acta Biochim. Pol.* **48**, 1025–1042 (2001).
13. Raiborg, C., Rusten, T. E. & Stenmark, H. Protein sorting into multivesicular endosomes. *Curr. Opin. Cell Biol.* **15**, 446–455 (2003).
14. Wang, C. W., Stromhaug, P. E., Shima, J. & Klionsky, D. J. The Ccz1-Mon1 protein complex is required for the late step of multiple vacuole delivery pathways. *J. Biol. Chem.* **277**, 47917–47927 (2002).
15. Babst, M., Wendland, B., Estepa, E. J. & Emr, S. D. The Vps4p AAA ATPase regulates membrane association of a Vps protein complex required for normal endosome function. *EMBO J.* **17**, 2982–2993 (1998).
16. Slagsvold, T., Pattni, K., Malerod, L. & Stenmark, H. Endosomal and non-endosomal functions of ESCRT proteins. *Trends Cell Biol.* **16**, 317–326 (2006).
17. Bilodeau, P. S., Winistorfer, S. C., Kearney, W. R., Robertson, A. D. & Piper, R. C. Vps27-Hse1 and ESCRT-I complexes cooperate to increase efficiency of sorting ubiquitinated proteins at the endosome. *J. Cell Biol.* **163**, 237–243 (2003).
18. Bilodeau, P. S., Urbanowski, J. L., Winistorfer, S. C. & Piper, R. C. The Vps27p Hse1p complex binds ubiquitin and mediates endosomal protein sorting. *Nat. Cell Biol.* **4**, 534–539 (2002).
19. Mizuno, E., Kawahata, K., Kato, M., Kitamura, N. & Komada, M. STAM proteins bind ubiquitinated proteins on the early endosome via the VHS domain and ubiquitin-interacting motif. *Mol. Biol. Cell* **14**, 3675–3689 (2003).

20. Cohen, M., Stutz, F., Belgareh, N., Haguenaer-Tsapis, R. & Dargemont, C. Ubp3 requires a cofactor, Bre5, to specifically de-ubiquitinate the COPII protein, Sec23. *Nat. Cell Biol.* **5**, 661–667 (2003).
21. Hwang, G. W., Furuchi, T. & Naganuma, A. A ubiquitin-proteasome system is responsible for the protection of yeast and human cells against methylmercury. *FASEB J.* **16**, 709–711 (2002).
22. Kinner, A. & Kolling, R. The yeast deubiquitinating enzyme Ubp16 is anchored to the outer mitochondrial membrane. *FEBS Lett.* **549**, 135–140 (2003).
23. Wysoccki, R. et al. The glycerol channel Fps1p mediates the uptake of arsenite and antimonite in *Saccharomyces cerevisiae*. *Mol. Microbiol.* **40**, 1391–1401 (2001).
24. Katzmann, D. J., Stefan, C. J., Babst, M. & Emr, S. D. Vps27 recruits ESCRT machinery to endosomes during MVB sorting. *J. Cell Biol.* **162**, 413–423 (2003).
25. Sato, K. & Nakano, A. Emp47p and its close homolog Emp46p have a tyrosine-containing endoplasmic reticulum exit signal and function in glycoprotein secretion in *Saccharomyces cerevisiae*. *Mol. Biol. Cell* **13**, 2518–2532 (2002).
26. Dare, E., Li, W., Zhivotovsky, B., Yuan, X. & Ceccatelli, S. Methylmercury and H(2)O(2) provoke lysosomal damage in human astrocytoma D384 cells followed by apoptosis. *Free Radic. Biol. Med.* **30**, 1347–1356 (2001).
27. Mukhopadhyay, D. & Riezman, H. Proteasome-independent functions of ubiquitin in endocytosis and signaling. *Science* **315**, 201–205 (2007).
28. Schwartz, D. C. & Hochstrasser, M. A superfamily of protein tags: ubiquitin, SUMO and related modifiers. *Trends Biochem. Sci.* **28**, 321–328 (2003).
29. Haglund, K., Di Fiore, P. P. & Dikic, I. Distinct monoubiquitin signals in receptor endocytosis. *Trends Biochem. Sci.* **28**, 598–603 (2003).
30. Longva, K. E. et al. Ubiquitination and proteasomal activity is required for transport of the EGF receptor to inner membranes of multivesicular bodies. *J. Cell Biol.* **156**, 843–854 (2002).
31. Conboy, M. J. & Cyert, M. S. Luv1p/Rki1p/Tcs3p/Vps54p, a yeast protein that localises to the late Golgi and early endosome, is required for normal vacuolar morphology. *Mol. Biol. Cell* **11**, 2429–2443 (2000).
32. Aouida, M., Page, N., Leduc, A., Peter, M. & Ramotar, D. A genome-wide screen in *Saccharomyces cerevisiae* reveals altered transport as a mechanism of resistance to the anticancer drug bleomycin. *Cancer Res.* **64**, 1102–1109 (2004).
33. Parsons, A. B. et al. Integration of chemical-genetic and genetic interaction data links bioactive compounds to cellular target pathways. *Nat. Biotechnol.* **22**, 62–69 (2004).
34. Begley, T. J., Rosenbach, A. S., Ideker, T. & Samson, L. D. Hot spots for modulating toxicity identified by genomic phenotyping and localisation mapping. *Mol. Cell* **16**, 117–125 (2004).
35. Furuchi, T., Takahashi, T., Tanaka, S., Nitta, K. & Naganuma, A. Functions of yeast helicase Ssl2p that are essential for viability are also involved in protection from the toxicity of adriamycin. *Nucleic Acids Res.* **32**, 2578–2585 (2004).
36. Finney, D. J. *Probit analysis* (Cambridge University Press, Cambridge, U.K., 1971).
37. Naganuma, A. et al. GFAT as a target molecule of methylmercury toxicity in *Saccharomyces cerevisiae*. *FASEB J.* **14**, 968–972 (2000).

Acknowledgments

This work was supported by a Grant-in-Aid for Scientific Research (A) from the Japan Society for the Promotion of Science (# 24249008) and by the Health and Labour Sciences Research Grants for Research on Risk of Chemical Substances from the Ministry of Health, Labour and Welfare, Japan.

Author contributions

G.W.H. and A.N. designed the experiments and wrote the manuscript. Y.M. and G.W.H. prepared tables 1–2. Y.M. and T.T. prepared figures 1–4. G.W.H. and A.N. reviewed the manuscript.

Additional information

Competing financial interests: The authors declare no competing financial interests.

How to cite this article: Hwang, G.-W., Murai, Y., Takahashi, T. & Naganuma, A. The protein transportation pathway from Golgi to vacuoles via endosomes plays a role in enhancement of methylmercury toxicity. *Sci. Rep.* **4**, 5888; DOI:10.1038/srep05888 (2014).



This work is licensed under a Creative Commons Attribution-NonCommercial-NoDerivs 4.0 International License. The images or other third party material in this article are included in the article's Creative Commons license, unless indicated otherwise in the credit line; if the material is not included under the Creative Commons license, users will need to obtain permission from the license holder in order to reproduce the material. To view a copy of this license, visit <http://creativecommons.org/licenses/by-nc-nd/4.0/>