

CEREC: An open, complete CAD/CAM system with smart software

The new CEREC Software 4.5 is now available and makes the CAD/CAM system from Dentsply Sirona easier to use than ever before. It is guaranteed to impress, thanks to its improved user friendliness, top performance and outstanding quality of results in restorative dentistry, implantology and orthodontics. For even greater flexibility, the data from the digital impression can now also be exported in STL format and used for other applications.

With the market launch of the new CEREC Software 4.5 and the opening of the CEREC system to export data from the digital impression, Dentsply Sirona has satisfied two key wishes expressed by dentists. This software takes the system operation to a whole new level – it is now simpler than ever to plan and produce a CEREC restoration. For new users, this is a clear and well-supported system; for more experienced users, the special features are easy to find and apply, meaning everyone benefits from enhanced performance. Since initiated processes continue to run in the background, the entire procedure is significantly quicker. In addition, opening the system to allow the export of scan data makes new options available. Dentists can now use the CEREC Omnicam scans in cooperation with their dental laboratory or other clinical planning software.

‘CEREC has proven itself in practice time and time again over the past 30 years, and in its current form the workflow offers a complete solution’, explained Dr Frank Thiel, Group Vice President for CAD/CAM at Dentsply Sirona. ‘However, we did understand the desire for

greater simplicity and flexibility. The new CEREC Software 4.5 allows our customers to treat their patients simply and more quickly, and to take advantage of more solutions with CEREC in the ever-growing digital world.’

Fewer steps, automatic detection and maximum precision

This new simplicity is the product of intelligent software tools. Compact tool bars that show all options at a glance cut down the time spent searching and scrolling. Many of the steps run automatically: restorations, such as inlays, onlays, crowns and veneers, are automatically detected by the software and the insertion axis is also defined automatically. Improved safety and security come from the further improved biogeneric initial proposals that match the patient’s needs perfectly, even in difficult anatomic situations, based on the Biojaw algorithm. To assess the tooth colour, the software uses the ‘Shade Detection’ function to analyse the scan and indicate the tooth colour as a Vita Classic or Vita 3D Master shade. Overall, this allows the dentist to make an even more reliable assessment of the intraoral situation.

The restoration is then prepared in just two steps instead of four, the model axis is set and the preparation margin is entered using the margin detector – that’s it. After checking the occlusal and proximal contacts of the desired restoration, the milling and grinding process can be started. Thanks to the even further refined milling strategy, fits have been further improved, particularly for complex constructions.

Flexibility with open data

The new CEREC Software 4.5, however, offers more. Given the increasing degree of customisation of practice solutions and the resulting, differing needs, Dentsply Sirona has expanded the application options of CEREC to include scan data exporting in STL format. Dentists can send the CEREC scans to any laboratory of their choice to order restorations. Thanks to the STL format, compatibility with all standard design programs used in the laboratories is ensured. The scan data can also be loaded into implant planning software to assist the practitioner with implant preparation. Data can moreover be exported in STL format from the new CEREC Ortho Software 1.2. The open format enables the practice team to import the CEREC Omnicam scans into any other clinical or practice management software and to archive them there.

The corresponding separate software license is now available together with the new CEREC Software 4.5 or CEREC Ortho Software 1.2.

To find out more about the CEREC Software 4.5, please contact Dentsply Sirona on 0800 072 3313 or visit www.dentsplysirona.com Access FREE CPD webinars and product demonstrations at dentsplyacademy.co.uk

Facebook: Dentsply Sirona

Twitter: @DENTSPLY_UK



Fig. 1 The CEREC software upgrade means enhanced user comfort. An analysis function helps you to determine the tooth colour, and the sidebar directly shows all the available options

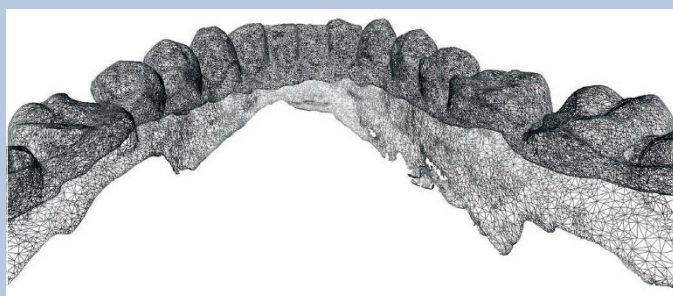


Fig. 2 Surface data of the scan with the CEREC Omnicam. This data can now be exported in the commonly used STL format in order to be used in other software programs, or be sent to laboratories for the design and production of restorations