

Dental products and services

Please send product news information and images to Kate Quinlan at k.quinlan@nature.com, Product news is provided as a service to readers using text and images from the manufacturer, supplier or distributor and does not imply endorsement by the *BDJ*.
Normal and prudent research should be exercised before purchase or use of any product mentioned.

In-clinic remineralisation regime

Unilever has launched an in-clinic remineralisation regime with REGENERATE Professional Advanced Enamel Serum.

A recent study showed that in the UK, 54% of young adults aged 18-35 years have significant tooth wear. Enamel erosive wear is a cumulative process triggered by repeated acid attacks, mainly attributed to a rise in ingestion of fizzy drinks, sports drinks, fruits and juices, vinegar based dressings, wines and cocktails. Until now there has been little the clinician can do to help patients reverse the early signs of erosive enamel wear. Unilever has now launched a new remineralisation regime, starting by making custom fit or stock dental trays for the upper and lower arches in the practice to apply the first of three applications of the REGENERATE Professional Advanced Enamel Serum – which takes only three minutes. The remaining two serum applications are completed at home by the patient over two subsequent days.

Studies showed that REGENERATE Professional Advanced Enamel Serum combined with Advanced Toothpaste can help reverse the early enamel erosion process. It is proven to recover surface micro hardness by 82% following three days of use (*in vitro*).

For more information contact CTS Dental Supplies on 01737 765400 or email regenerate@cts-dental.com.



Simulated implant dentistry app

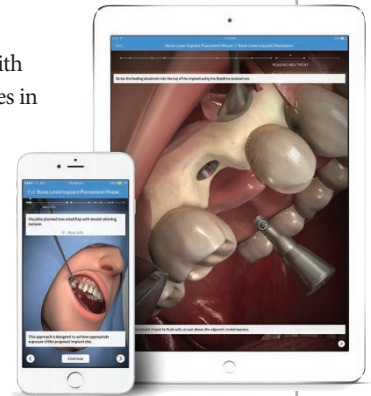
The International Team for Implantology (ITI) has teamed up with Touch Surgery, an app-based technology company that specialises in cognitive medical training, to provide a digital learning aid to entry-level clinicians with an interest in implant dentistry.

Based on protocols and evidence-based findings delivered by the ITI, Touch Surgery is producing animated visualisations of validated workflows in the form of modules for their free mobile app. The app enables clinicians to train specific treatment workflows interactively before actually treating patients. It also features a test mode in which users answer questions and make decisions within the workflow before they can move on to the next phase.

The first ITI module on 'Bone Level Implant Placement' is now available via the Touch Surgery mobile app for iOS and Android devices. A second module on 'Tissue Level Implant Placement' is scheduled for release in late summer 2017. All the modules are available at no cost.

Touch Surgery is excited to create the next generation of training tools for the field of dentistry and hopes that this will be able to affect the lives of patients around the world.

To find out more visit <https://www.touchsurgery.com/>.



Spread the cost of transformational equipment

CEREC has proved transformational in restorative dentistry, making single-visit dentistry a reality – an appealing and attractive proposition for today's busy patients.

For those dentists who have – despite the appeal of CEREC – limited cash-flow to support an outright purchase of this type of equipment, Henry Schein ConnectDental now has a solution in the form of its new CEREC SmartPlan Rental Programme (CEREC Club Select Full Care at £193.20 per month inc VAT must be taken with all CEREC SmartPlan rental schemes). This new payment plan enables customers to spread the cost of a CEREC Omnicam AC and MCX Milling Unit into manageable monthly payments over a three-year period.

It also reduces the worry of making big ticket purchases with software updates, annual servicing, spare parts, and call-out

charges all included in the single monthly fee. Investing in CEREC can be the right way to invest in the digital future of the practice. Customers also have the option to buy, extend the rental, or return at the end of the term.

Introducing CEREC to the practice is now within everyone's grasp – at a monthly cost of just £2,099 inc VAT plus CEREC Club Select Full Care at £193.20 inc VAT.

To find out more about CEREC SmartPlan Rental and other hire purchase options, contact Henry Schein ConnectDental on 0800 028 4870 or visit hsdconnectdental.co.uk.

Any finance offered is subject to status and full credit approval. Full finance offer details available from Henry Schein Financial Services upon request. Telephone 0800 028 5523.