

Engineering receptor-mediated transmembrane signaling in artificial and living cells

Ke Shi¹, Chuwen Song¹, Yayi Wang¹, Rona Chandrawati ² & Yiyang Lin ¹✉

Living cells possess a variety of transmembrane signaling systems that receive chemical and physical cues from the environment and transduce this information into an intracellular signal that triggers downstream cellular responses. This Review aims to present recent advances in the design of bioinspired systems that mimic transmembrane signaling in synthetic and living cells. We summarize the building of cell-like membranous structures and the construction of interfacial recognition between chemical or biological components. After introducing two main mechanisms of signal transduction in biology through receptor tyrosine kinase and G-protein coupled receptors, we then highlight the possibility of mimicking transmembrane signaling with transducer integrated systems. We survey the potential for applying supra-molecular materials (e.g., DNA origami, polypeptide structures and polymer scaffolds) to interact with surface receptors on the plasma membrane, providing an avenue for the application of therapeutics.

The plasma membrane not only protects the interior of cell from the outside environment, but also plays an essential role in supporting basic cellular activities such as cell division, replication and cell-cell communication. The hydrophobic nature of the plasma membrane prohibits the direct diffusion of polar molecules (e.g., hormones) across the lipid bilayer. Nevertheless, transmembrane signal transduction is facilitated by receptors on and in the plasma membrane, which receive external stimuli (chemical or physical) and translate them into intracellular responses. In this process, a primary signal selectively binds to the active site of a cell surface receptor on the outer leaflet of cell membrane, leading to the activation of a secondary signal to regulate gene expression and other biochemical reactions.

Cell surface receptors convert specific extracellular signals into intracellular changes, either directly via intrinsic enzymatic activities within the receptor or by activating intracellular messenger molecules. Here we mainly focus on two types of prominent transmembrane protein receptors involved in living cells, i.e., receptor tyrosine kinases (RTKs) and G-protein coupled receptors (GPCRs) (Fig. 1). A RTK requires at least two transmembrane units, in which recognition sites are exposed on the membrane surface and signaling sites are on the interior¹. Upon the binding of signaling ligands (e.g., growth factor and cytokine) to the recognition sites, two transmembrane units of RTKs are clustered through ligand-induced-dimerization, which triggers the phosphorylation of the intracellular tyrosine residue and activates the tyrosine kinase activity. GPCRs are another important class of cellular signal transduction and are well known for their structures of seven transmembrane helices. The binding of a primary signal to the active site induces conformational changes of receptor and subsequently activates a G protein. GPCRs are the largest family of transmembrane receptors associated with different biological functions such as cell proliferation, and play an essential role in modulating tumor growth and angiogenesis².

¹State Key Laboratory of Chemical Resource Engineering, Beijing Laboratory of Biomedical Materials, Beijing University of Chemical Technology, Beijing 100029, China. ²School of Chemical Engineering and Australian Centre for Nanomedicine (ACN), The University of New South Wales, Sydney, NSW, Australia. ✉email: y.lin@mail.buct.edu.cn

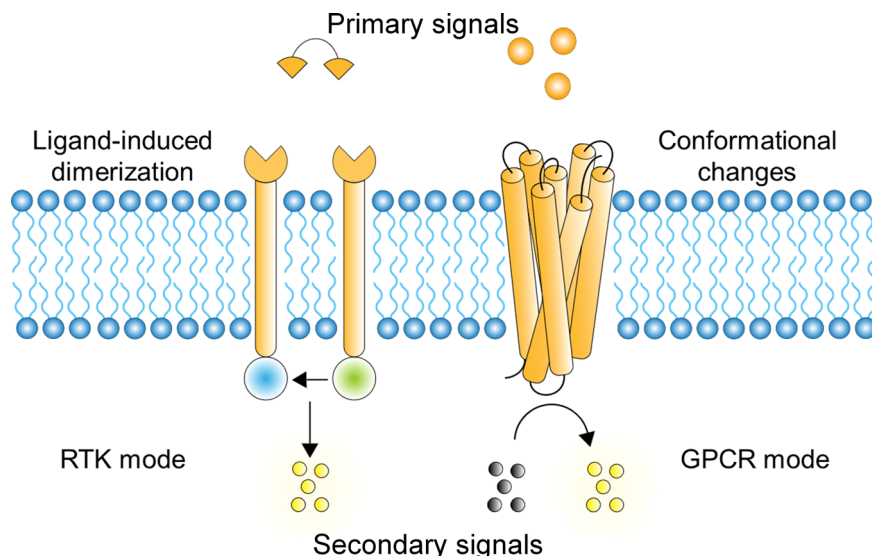


Fig. 1 Schematic illustration of transmembrane signaling.

In this Review, we discuss ongoing research spearheading the effort to prepare membranous structures as cell mimics and different strategies to realize interfacial recognition at the interface of lipid membranes. We then summarize recent progress in the design of artificial receptors built in synthetic membranes to mimic biological signaling across lipid bilayers. Lastly, we showcase the vast possibility to develop potential therapeutic drugs from supramolecular systems (e.g., polypeptides, polymers, and DNA structures) that serve as agonists or antagonists to instruct downstream cellular responses.

Construction of cell membrane mimics

According to the fluid mosaic model, cell membranes are organized bilayer structures composed of lipids, proteins and carbohydrates. Subcellular organelles such as the nucleus, Golgi complex, and lysosomes, are also enclosed by lipid membranes. To understand the physicochemical properties of cell membrane, bottom-up approaches have been developed to build liposomes or lipid vesicles as the simplest model of cells³. Typically, unilamellar vesicles are named according to their size as GUVs (giant unilamellar vesicles, >1000 nm), LUVs (large unilamellar vesicles, 100~1000 nm) or SUVs (small unilamellar vesicles, ~50 nm). LUVs are facilely prepared with the thin-film hydration followed by extrusion method, in which a dry lipid film is hydrated and extruded mechanically through a polycarbonate membrane with designate pore size. SUVs with smaller sizes are simply prepared with sonication-based method, which does not produce uniform liposomes with good reproducibility. GUVs can be achieved with direct hydration of a phospholipid film, which works only with certain lipid compositions and salt conditions^{4,5}. To address this challenge, hydrogel-assisted hydration method has recently been developed to prepare GUVs, in which phospholipid films are placed on top of a dried polymeric hydrogel surface and swollen in aqueous solution⁶. Another widely used method to prepare GUVs is electroformation, where an alternating electrical field is applied across a solution-filled chamber to facilitate bilayer separation and bending of the lipid film by electro-osmotic effects⁷. However, the encapsulation of biomolecules in these liposomes is still inefficient. To tackle this challenge, water-in-oil emulsion droplets are exploited as soft templates to prepare bilayer vesicles by transferring lipid-stabilized emulsion droplets through an oil/water interface or by forming double emulsion droplets with an oil shell followed by extracting the oil^{8–10}. Recently,

microfluidic devices have been developed to produce monodisperse giant vesicles via microfluidic jetting or emulsion-based methods^{11–14}.

In addition, rudimentary forms of membranous structures have been explored in colloidosomes^{15–17}, dendrimerosomes^{18,19}, polymersomes^{20,21}, layer-by-layer capsules^{22,23}, and proteinosomes^{24–27}. The building blocks of these membranous protocells include organic or inorganic particles, dendrimers, polymers, surfactants, polyelectrolytes and proteins. These membrane-bound compartments offer new opportunities to mimic cell-like behaviors such as growth²⁸, division and fission^{29–32}, fusion^{33,34}, signaling^{35–37}, and motility^{38,39}. Chemical communication between these membranous compartments is described in a recent Review⁴⁰. Here we mainly focus on transmembrane signaling across phospholipid membranes.

Biomimetic interfacial recognition on phospholipid membranes

Recognition and binding of an extracellular signal by a cell surface receptor is the first step of transmembrane signaling^{41,42}. Understanding the ligand-receptor interactions on cell surface is vital to reveal the molecular basis of cell signaling or cellular responses to external stimuli. Here we review the recent effort devoted to exploring biological recognition on cell-mimicking membranes, which avoids the difficulty in the direct inspection of cellular properties at the molecular scale. Non-covalent interactions accounted for interfacial recognition on the surface of lipid membrane include hydrogen bonding^{43–46}, host-guest interaction^{47–49}, DNA hybridization^{50–52}, metal-ligand coordination⁵³ and biological interactions⁵⁴ (Fig. 2).

Hydrogen bonding is responsible for the stabilization of many biological structures including protein secondary structures (e.g., α -helices and β -sheets) and DNA double helices. Hydrogen bonds also play a central role in the biological recognition involving carbohydrates and membrane proteins. It is worthwhile to note that water molecules will compete with the hydrogen bonds between biomolecules since water serves as hydrogen donor and acceptor. To address the role of hydrogen bonding on the surface of vesicles, multivalent H-bond pairs such as melamine/thymine and cyanurate/melamine have been designed. For example, lipid vesicles composed of cyanuric acid/melamine^{43,44} or 2-ureido-4[1H]-pyrimidinone⁴⁶ at the membrane surface undergo selective adhesion and fusion driven by multivalent hydrogen bonding.

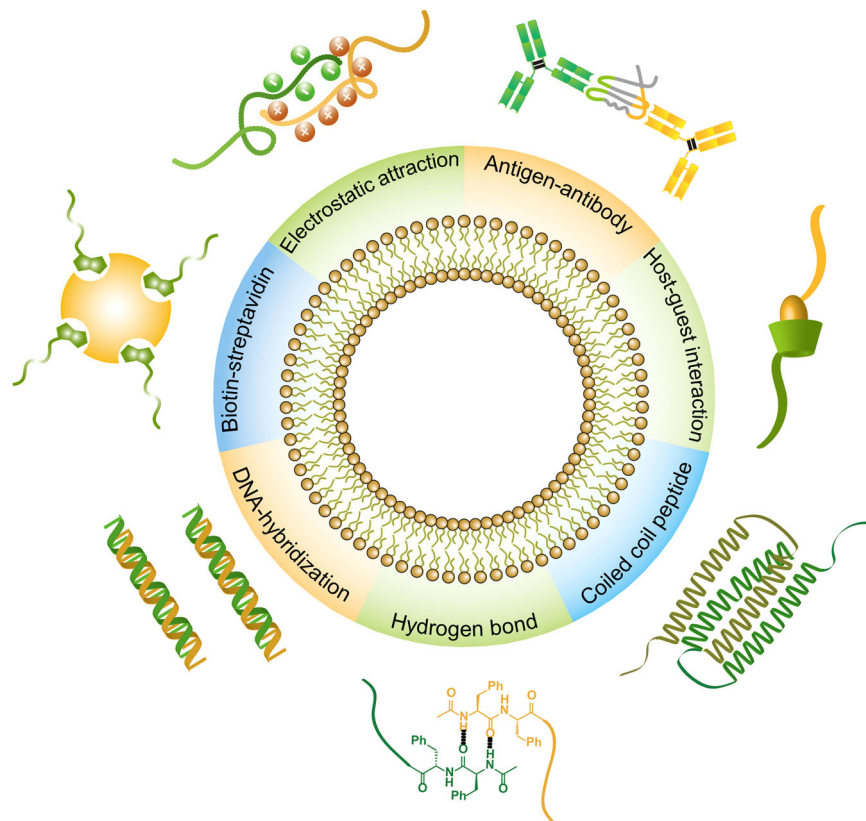


Fig. 2 Supramolecular interfacial recognition on lipid membranes. The main intermolecular forces include electrostatic attraction, antigen-antibody affinity, host-guest interaction, coiled-coil peptide structures, hydrogen bonding, DNA hybridization and biotin-streptavidin recognition.

This suggests that low-dielectric hydrogen bonding can translate effectively to the lipid–water interface.

Host–guest chemistry is an intriguing concept that describes the formation of structural complexes by two or more molecules through non-covalent forces. The displaying of macrocycle hosts (e.g., crown ether, cyclodextrin and cucurbit[n]uril) on the surface of the lipid vesicles allows for specific ligand recognition via host-guest interactions. Ravoo et al.^{47,48} developed supramolecular vesicles displaying cyclodextrins on the membrane surface, which aggregated and adhered to each other in the presence of azobenzene-bearing linkers. The aggregated vesicles reversibly dissociated by transforming *trans*-azobenzene to *cis*-form upon ultraviolet (UV) light irradiation, which weakened the host-guest interaction between cyclodextrin and azobenzene. Moreover, phospholipid vesicles can display bioactive maltose and lactose on the surface by using a sugar-adamantane conjugate as a guest⁴⁹. The maltose-decorated liposomes agglutinate in the presence of lectin concanavalin A, whereas the lactose-decorated liposomes agglutinate with the addition of peanut agglutinin.

Hybridization of complementary nucleic acids is a well-established tool to engineer the surface of phospholipid vesicles, in which the strength of interfacial recognition depends on a variety of factors including temperature, DNA sequence, and the concentration of inorganic salts. Although nucleic acids are not intrinsically displayed on the cell membrane, the modification of DNA or RNA sequences on lipid membrane can be achieved by conjugation to an alkyl tail or cholesterol group, which spontaneously inserts into the hydrophobic lipid bilayer. These nucleic acid-displaying lipid vesicles undergo reversible aggregation and fusion in the presence of complementary DNA linkers, in which the repulsive hydration forces between the lipid head groups of bilayers are overcome^{50,52}. To gain reversible control over

liposome assembly, membrane-anchored oligonucleotides were incorporated with photoactive azobenzene groups and the system was remotely irradiated with either UV or visible light⁵⁵.

Metal ions play an essential role in biology. For example, metal ions serve as catalytic or structural cofactors to maintain the function of proteins. Ion binding or Ca^{2+} influx acts as the first signal driving membrane events⁵⁶. In artificial systems, metal-ligand coordination at the interface of vesicular membranes drives specific interactions that may result in vesicle aggregation, adhesion, and fusion. For example, Lehn et al.⁵³ designed synthetic lipids bearing a bipyridine head group and incorporated these amphiphilic lipids into LUVs. Upon the addition of metal ions (e.g., Ni^{2+} or Co^{2+}), metal-ligand complexation rapidly led to spontaneous fusion into giant multilamellar vesicles.

Biological recognition between functional motif pairs such as mannose/concanavalin A ($K_a \sim 8.5 \times 10^6 \text{ M}^{-1}$)⁵⁷, D-Ala-D-Ala/vancomycin ($K_a \sim 10^6 \text{ M}^{-1}$)⁵⁸, biotin/streptavidin ($K_a \sim 10^{15} \text{ M}^{-1}$)⁵⁹ and coiled-coil polypeptides⁶⁰ are engineered on the surface of lipid membrane to initiate vesicle aggregation and fusion, as well as liposome-based biosensing. For example, Zasadzinski et al.⁵⁴ reported the reversible aggregation of phosphatidylcholine liposomes equipped with biotin upon the addition of streptavidin. Percec et al.^{18,19} designed a class of amphiphilic dendrimers that self-assembled into dendrimersomes displaying sugar ligands with a precisely controlled density, offering a platform for biomimetic study of biological interactions.

Electrostatic effect dominates many aspects of biological phenomena such as protein folding and DNA organization. Charge attraction between chemical ligands and surface receptors also contributes to interfacial recognition on lipid membrane. König et al.⁶¹ reported vesicle membranes bearing three amphiphilic artificial binding receptors that recognized phosphate anion,

imidazole derivatives, and ammonium ions through electrostatic interaction. Similarly, lipid vesicles functionalized with bis-zinc cyclen complexes exhibited a high affinity to phosphate anions; as such, they selectively discriminated uridine triphosphate and pyrophosphate via an indicator displacement assay.⁶²

Mimicking receptor-mediated transmembrane signaling with supramolecular systems

Despite extensive studies of membrane transporters⁶³ and ion channels⁶⁴, the construction of receptor-mediated signal transduction in artificial systems is less explored^{65–67}. This is challenging since transmembrane signaling involves a series of precisely designed physicochemical processes such as interfacial recognition, signal conversion from one type into another type, signal transmission from outer membrane to the interior, catalytic signal amplification, as well as downstream responses. Nevertheless, the essential role of RTKs and GPCRs as signaling mechanisms in biology has inspired the rational design of artificial signaling systems in phospholipid membranes.

RTKs coordinate intracellular signaling cascades through the binding of a ligand and the dimerization of cell surface receptors that activates tyrosine kinase activity and stimulates intracellular responses. Artificial signaling systems that mimic the RTK signaling mode have been developed to sense a range of external signals, including potassium ferricyanide⁶⁸, diethylenetriammonium^{69,70}, adenosine triphosphate (ATP)⁷¹, immunoglobulin G antibody⁷², and proton⁷³. Early work by Matile et al.⁷⁴ reported a membrane-spanning ion channel exhibiting a simple mode of RTK signaling where the binding of polyhistidine and copper ions led to the synergistic dimerization of receptors. Hunter and Williams⁶⁸ developed a RTK signal transduction system based on cholenic acid-derived membrane-spanning receptors that sensed the external oxidant signal to cluster the receptors and release a secondary signal via thiol-disulfide exchange. Schrader et al.^{69,70} designed unsymmetrical transmembrane receptors bearing bisphosphonate dianions as a recognition site outside membrane and a fluorescence resonance energy transfer (FRET) pair on the other end (Fig. 3a). The binding of an external primary messenger (e.g., diethylenetriammonium) triggered receptor dimerization and activated an internal FRET. Target-aptamer recognition is another useful tool to build RTK-mode signaling pathway in artificial membrane. For example, Liu et al.⁷¹ developed a transmembrane signal transducer possessing three functional modules: split ATP aptamers as recognition modules, a hydrophobic transmembrane linker, and a split G-quadruplex as a signal output module (Fig. 3b). The presence of ATP outside the membrane triggers the dimerization of DNA receptors, resulting in catalyzed peroxidation of Amplex red to resorufin.

GPCRs are a large protein family that recognize a diverse range of endogenous ligands. The binding of an external signal to a GPCR causes a conformational change of receptor and generates a subsequent interaction between the GPCR and a nearby G protein. Artificial receptors that have similar function as GPCRs were previously reported in organic solvents^{75–77}. To better mimic protein receptors, Clayden et al.⁷⁸ developed a photo-responsive foldamer consisting of an azobenzene group and a helical synthetic peptide spanning across the lipid membrane. The foldamer sensed light signal to stimulate global conformational changes and a response of solid-state ¹⁹F nuclear magnetic resonance. This foldamer was further developed into a synthetic membrane-bound receptor attached with a metal ion-binding pocket that selectively recognized external ligands (Fig. 3c)⁷⁹. In the presence of copper ions (cofactor), the affinity of a chiral ligand to the binding pocket switched the interconverting conformational states and caused a structural

change of fluorophores inside the membrane, which ultimately generated a fluorescence signal.

Apart from RTK and GPCR mode, molecular translocation is used as an alternative mechanism of signal transduction across lipid membranes^{80–82}. Lipid bilayer is a dynamic and fluidic phase, in which individual lipids diffuse laterally⁸³ and move from one leaflet to the other leaflet (flip-flop, $t_{1/2}$ ~h)^{84,85}. Williams and Hunter⁸⁶ developed a synthetic receptor capable of transmitting a chemical signal across lipid membrane by taking advantage of receptor translocation from one side of lipid bilayer to the other. In their design, two hydrophilic head groups are attached to a steroid core, in which one head group acts as an external sensing site and the other is a pro-catalyst. The receptor is not long enough to span the bilayer and therefore the pro-catalyst is imbedded in lipid membrane. Increasing the external pH removes the charge on the sensing site, allowing the pro-catalyst group to enter the vesicle interior and catalyze the hydrolysis of a fluorogenic substrate. When the receptor is attached with a bipyridine group, its translocation is inhibited by the coordination of copper ions and activated by sodium ascorbate (a reducing agent) and ethylenediaminetetraacetic acid (a competing ligand)^{87,88}. By employing this signal transduction mechanism, the lipid vesicles can release an encapsulated molecular cargo in response to an external control signal (Fig. 4a)⁸⁹ or undergo a vesicle-to-vesicle communication based on competing biotin-NeutrAvidin binding⁹⁰. In another system⁹¹, the binding of a cadmium(II) cofactor to the exterior pyridine-oxime group generates a catalytically active complex that can translocate to the vesicles interior and stimulates an output signal. In these systems, molecular hydrophilicity is the key factor that governs receptor translocation across lipid membrane. Similarly, artificial receptors bearing photo-responsive groups such as azobenzene and spiropyran are able to change their hydrophobicity through host-guest interaction or photoisomerization, offering new strategies to switch on transmembrane signaling^{92,93}.

Inspired by human vision, our group developed a photo-transduction system in artificial cells, where an amphiphilic ruthenium-bipyridine complex was designed as a synthetic photoreceptor⁹⁴. The membrane-anchored receptor is installed on the outer leaflet of lipid membrane to harvest visible light and release a catalytic messenger that translocated across the membrane via flip-flop (Fig. 4b–f). The phototransduction eventually led to fluorescence amplification and a liquid-liquid phase separation (LLPS), a mechanism accounted for the formation of membraneless organelles. Coupling receptor-mediated signaling with biological recognition and enzymatic cascade reactions further enabled the construction of protocell signaling-encoded Boolean logic gates.

Engineering nanostructures to regulate signal transduction in living cells

Biological recognition on the surface of the plasma membrane requires control over ligand-receptor interaction in space, with precise configuration, orientation and distance. To optimize the ligand-receptor affinity, nanopatterned surfaces produced by nanolithography method or engineered nanoparticles^{95,96} were explored to display bioactive ligands in a controlled manner. Supramolecular self-assembly offers an alternative tool to design nanostructures displaying ligands with controlled surface density and spatial arrangement⁹⁷. Here, we will summarize recent advances in using self-assembling structures and nanomaterials of polypeptides, nucleic acids and polymers to trigger signal transduction across the membrane, induce cellular events and stimulate therapeutic effects.

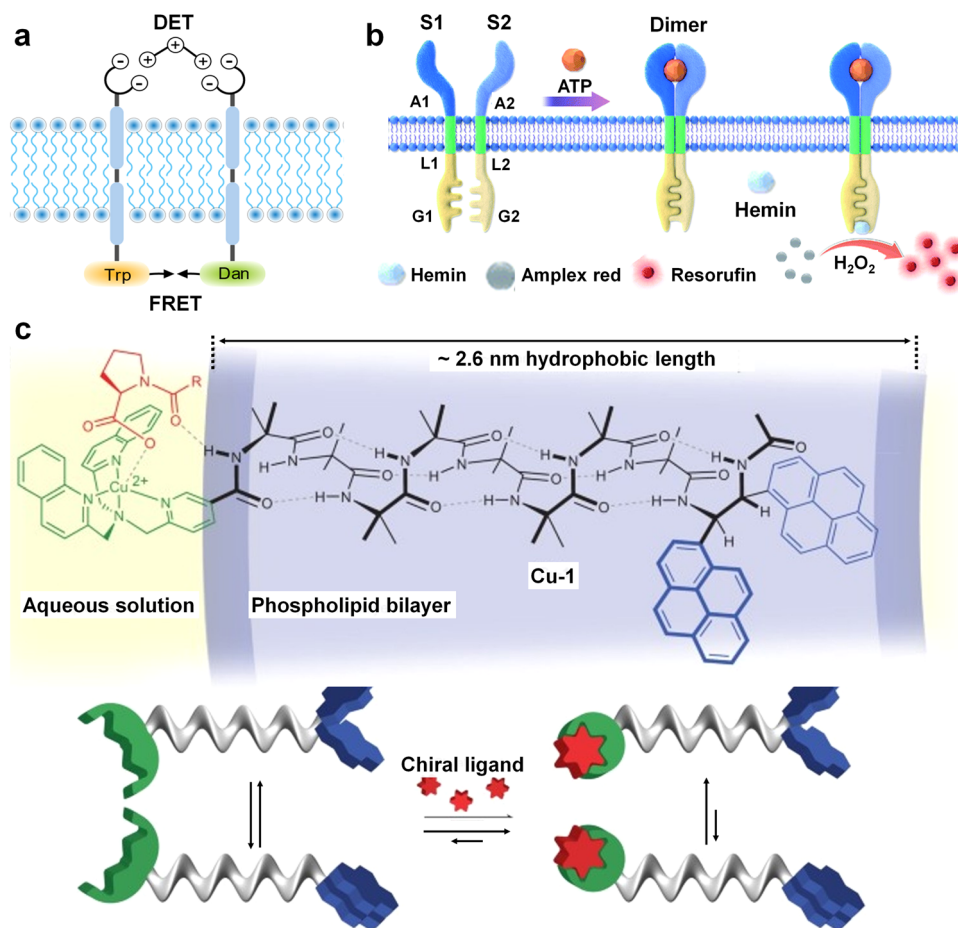


Fig. 3 Artificial GPCR and RTK signaling in supramolecular systems. **a** Primary messenger (diethylenetriammonium, DET) induces dimerization of two transmembrane receptors and stimulates FRET inside liposomes. **b** ATP-mediated dimerization of DNA-based membrane receptors for transmembrane signaling to activate hemin-catalyzed peroxidation of Amplex red. **c** A synthetic transmembrane receptor Cu-1 comprises three components: a metal-binding site (green), a helical oligomer embedded in the membrane (gray), and a pyrene-based fluorophore (blue). Reversible binding of a chiral ligand triggers the conformational changes from the binding site to the reporter, generating a fluorescence output. **a** Adapted with permission from ref. ⁶⁹, Copyright Wiley-VCH, 2009; **b** adapted with permission from ref. ⁷¹, Copyright Royal Chemical Society, 2021; **c** adapted with permission from ref. ⁷⁹, Copyright Springer Nature, 2017.

Inspired by the sophisticated structure of natural proteins, chemists have developed polypeptides that contain sequences predisposed to form secondary structures (e.g., α -helix and β -sheet)⁹⁸. Designer polypeptides integrating these subunits can further self-assemble into supramolecular scaffolds fused with bioactive peptide ligands capable of binding to membrane receptors including integrin⁹⁹, human epidermal growth factor receptor 2 (HER2)¹⁰⁰, Eph receptor A2 (EphA2)¹⁰¹, death receptor 5 (DR5)¹⁰² and Met^{103,104}. In particular, amphiphilic peptides readily aggregate into fibrillary networks with controlled ligand architectures, geometries, and sequences, forming a versatile platform for mimicking the extracellular matrix. Inspired by the extracellular matrix protein fibronectin that synergistically binds $\alpha_5\beta_1$ integrin, Pashuck et al.⁹⁹ designed self-assembled nanofibers and hydrogels with β -sheet motifs, in which the distance of two different peptide epitopes was controlled with sub-nanometer accuracy (0.7 to 6 nm). Endothelial cells, incubated within fibril networks that display Arg-Gly-Asp-Ser (RGDS) and Pro-His-Ser-Arg-Asn (PHSRN) with a 3.2 nm spacing, showed an upregulation in the expression of the alpha 5 integrin subunit (Fig. 5a). Supramolecular self-assembly is highly dynamic and adaptive in physiological environments. Engineered peptide nanoparticles were observed to transform into a fibrillar network upon accumulating at the tumor site, which subsequently

suppressed the dimerization of HER2, a receptor tyrosine kinase overexpressed in cancers, and prevented downstream cell signaling and the expression of proliferation and survival genes (Fig. 5b)¹⁰⁰. Similarly, a cancer-targeting peptide was shown to bind to transmembrane receptor tyrosine kinase EphA2 and induce the aggregation of overexpressed EphA2 receptors¹⁰¹, leading to the activation of signal transduction of antitumor pathway and the downstream apoptosis of cancer cells. Futaki et al.^{105,106} designed a leucine-zipper coiled-coil polypeptide as an artificial bivalent ligand to stimulate dimerization of epidermal growth factor receptor (EGFR) on plasma membranes.

Nucleic acid self-assembly is a reliable approach to design predictable, programmable, and addressable scaffolds displaying biological ligands or ligand mimics with specific orientation, spacing and organization. The Watson-Crick rules direct bottom-up assembly of DNA nanostructures, where two complementary DNAs form a double helix with a diameter of 2.0 nm and a length of 3.4 nm per helical turn. Moreover, the conjugation of functional groups (e.g., peptide, aptamer and DNzyme) to oligonucleotides endows specific recognition towards membrane receptors or catalytic amplification¹⁰⁷. So far, receptor-binding aptamers have been screened and developed to recognize Met^{108–110}, transferrin receptor¹¹¹, and transmembrane tumor necrosis factor (TNF) receptors¹¹². Among these, hepatocyte

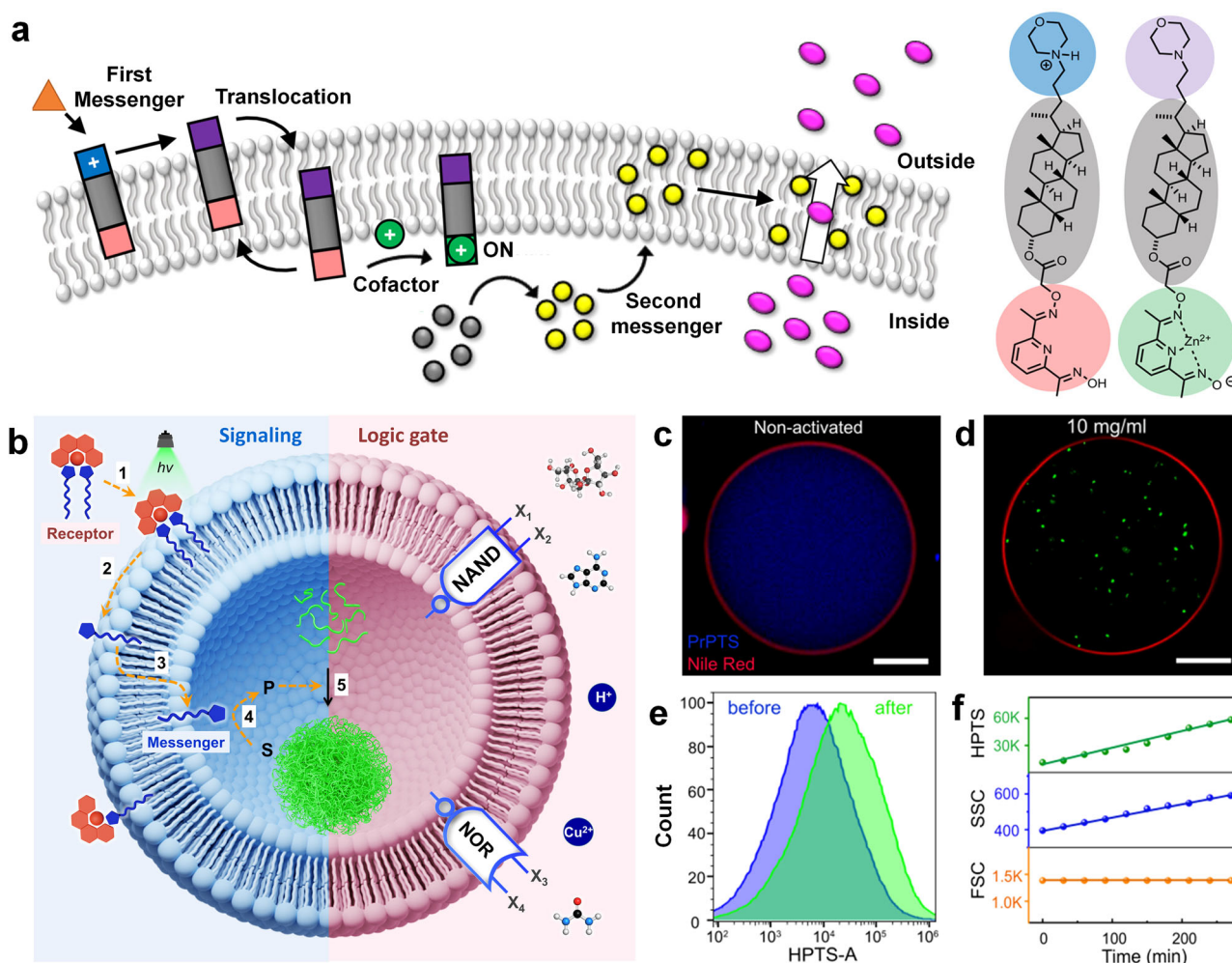


Fig. 4 Signal transduction across phospholipid bilayers via the mechanism of molecular translocation. **a** A signal transduction mechanism that triggers cargo release from vesicles. Binding of a charged cofactor to the inner head group activates a catalytic hydrolysis and liberates a surfactant that enhances the permeability of the membrane and facilitates cargo release. **b** Schematic illustration of receptor-mediated phototransduction, which involves five essential steps including installation of a photoreceptor on the outer leaflet of lipid bilayers (1), light-triggered release of a messenger (2), flip-flop movement of messenger across the membrane (3), signal amplification through catalytic hydrolysis of an esterase substrate (S) into a fluorescent product (P) (4), and the formation of coacervate droplets (5). Coupling signal transduction with biological recognition and enzymatic cascade reactions leads to the development of Boolean logic gates. **c, d** Formation of coacervate microdroplets as artificial organelles inside giant vesicles. **e, f** Flow cytometry results show the enhancement of fluorescence intensity and the growth of coacervates through phototransduction. Scale bars: **c** 10 μm , **d** 15 μm . **a** Adapted with permission from ref. ⁸⁹, Copyright American Chemical Society, 2017; **b-f** adapted with permission from ref. ⁹⁴, Copyright AAAS, 2023.

growth factor (HGF) induces dimerization of the cell surface receptor c-Met to stimulate cell proliferation, survival, and migration¹¹³. Sando et al.¹¹⁴ designed a 50-mer DNA aptamer as an oligonucleotide-based HGF mimetics that inhibits HGF-induced c-Met signaling. This 50-mer DNA inhibitor is further dimerized with a complementary DNA strand to generate an agonist that binds to two receptors and activates the Met signaling (Fig. 6a)¹¹⁵. To increase the specificity of Met activation, a bispecific DNA aptamer was developed to simultaneously recognize Met and non-cognate ligands (e.g. thrombin), in which Met phosphorylation was only observed when both aptamer and thrombin were present (Fig. 6b)¹¹⁶. A similar strategy was applied to generate a bispecific aptamer that can induce protein-pairing for selective inhibition of receptor function¹¹⁷. In addition, aptamer-based growth factor mimetics was demonstrated to exert therapeutic effects in a target tissue for in vivo applications¹¹⁸ and allow for strategy-guided design of synthetic growth factor surrogates with fine-tuned agonism¹¹⁹. Nie et al.¹⁰⁹ designed an ATP-responsive DNA nanodevice that responded to external

stimuli to trigger DNA strand displacement, inducing the dimerization and activation of c-Met to cognate for hepatocyte growth factor (Fig. 6c). This method allows for the manipulation of the behaviors of multiple cell populations simultaneously. Li et al.¹²⁰ reported a reversible control of membrane receptors at the cell surface with a self-assembled DNA nanospring, allowing for the regulation of cell protrusions and mRNA expression (Fig. 6d). Recently, a DNA origami structure that precisely scaffold the patterning of TNF-related apoptosis-inducing ligand-mimicking peptides at nanoscale level was demonstrated to stimulate human breast cancer cells¹¹². It was found that ~5 nm is the critical inter-ligand distance between hexagonally patterned peptides to induce death receptor clustering and produce apoptosis.

Clustering of cell surface receptors requires specific and strong ligand-receptor affinity, which is usually achieved with engineered macromolecular scaffolds that display multivalent ligands with varied density, orientation, and spatial organization^{121–123}. In this context, a therapeutic platform that mimics the

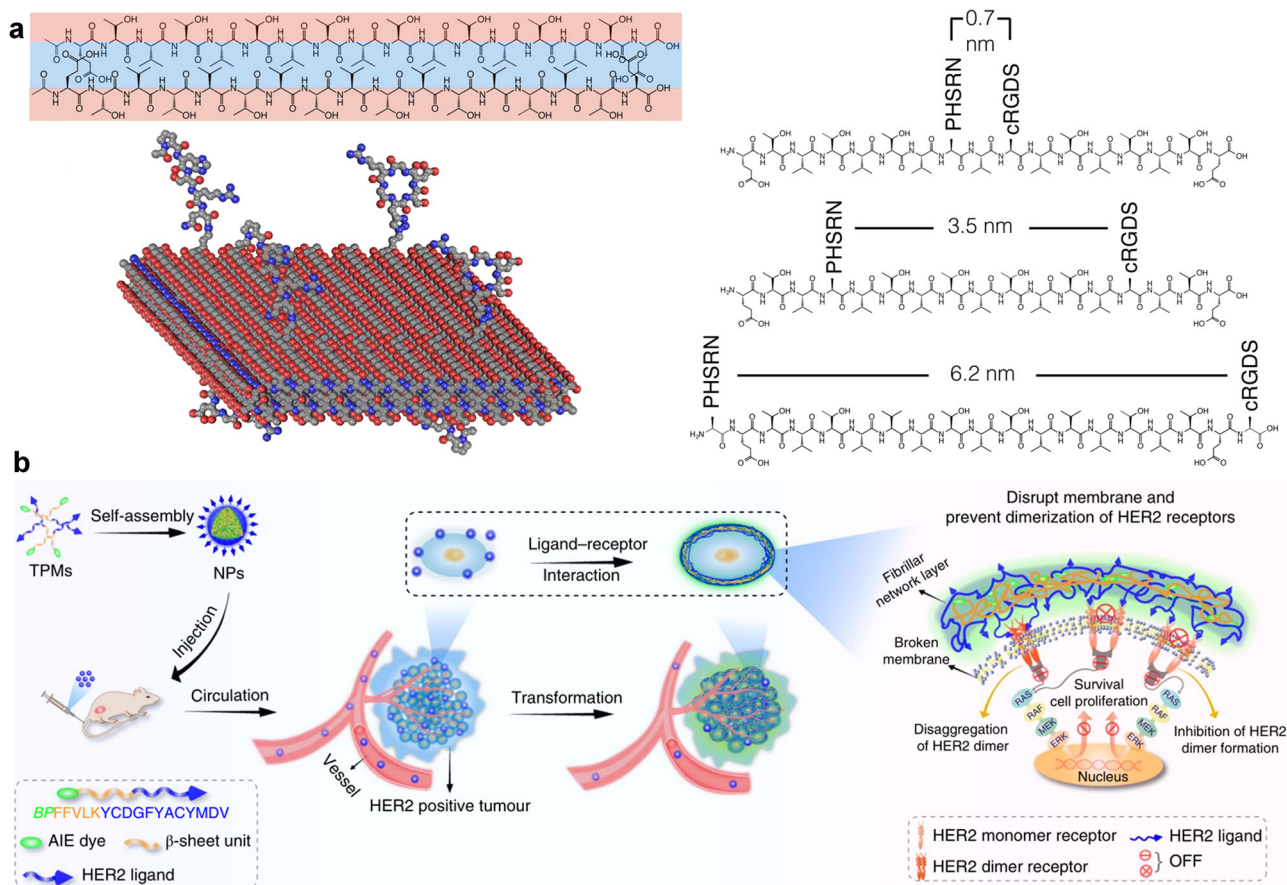


Fig. 5 Interfacing supramolecular peptide nanostructures with membrane receptors. **a** Schematic illustration of supramolecular fibrils displaying RGDS and PHSRN with defined spacing of 0.7 nm, 3.5 nm and 6.2 nm. RGDS and PHSRN motifs are attached to the rigid backbone of a β -sheet peptide. **b** Transformable peptide monomers (TPMs) self-assemble into nanoparticles (NPs) to arrest HER2 signaling in mice. TPMs are comprised of three discrete functional domains: a bis-pyrene moiety with aggregation-induced emission (AIE), a β -sheet-forming domain derived from β -amyloid and a disulfide cyclic peptide of HER2-binding domain. **a** Adapted with permission from ref. ⁹⁹, Copyright American Chemical Society, 2016; **b** adapted with permission from ref. ¹⁰⁰, Copyright Springer Nature, 2020.

mechanism of immune effector cells was developed to crosslink surface receptors of target cells and induce apoptosis¹²⁴. To achieve this, an antibody-DNA hybrid was developed by conjugating an anti-CD20 Fab' fragment to a single-stranded oligonucleotide, which recognized CD20 on the surface of malignant B-cells. A linear polymer was grafted with complementary oligonucleotides that bind to antibody-DNA hybrids, leading to the clustering of CD20 antigen and apoptosis. Similarly, Kolmar et al.¹²⁵ designed DR5 binding constructs comprising varied copies of DR5 targeting peptide covalently bound to a protein scaffold and demonstrated their remarkable effect in inducing apoptotic signaling.

Modulation of cellular signaling with external stimuli

Manipulating ligand-receptor interaction with external stimuli offers an alternative approach to regulate transmembrane signaling and coordinate cellular behaviors. The use of light as a non-invasive stimulus offers temporal and spatial control with varied irradiation time, wavelength and intensity. For example, Aida et al.¹²⁶ described a dendritic molecular glue with multiple pendant guanidinium ions that adhered to HGF and suppressed its affinity towards c-Met. Upon exposure to 365 nm light, the glue was photocleaved at a linkage in the dendrimer framework, and HGF was liberated and retrieved its intrinsic affinity towards c-Met (Fig. 7). Photo irradiation was also applied to increase the ligand affinity to target proteins. Kohata et al.¹²⁷ developed

another photoreactive glue that adhered to aptamer/c-Met complex. Upon exposure to UV light, the temporarily stabilized aptamer/c-Met conjugate reacts with the photoexcited benzophenone group of molecular glue and the nitrene species, resulting in the covalent permanent stabilization of the aptamer/c-Met complex, which efficiently inhibited HGF/c-Met interactions and suppressed cell migration.

To modulate cell signaling in a biocompatible manner, a visible-near Infrared (NIR) laser was considered to be advantageous over UV light since the former can penetrate into deep tissue and causes less damages. Qin et al.¹²⁸ applied pulse laser to heat plasmonic gold nanoparticles to deactivate protease-activated receptor 2 in target cells, which is a G-protein-coupled receptor involving in a pathway that leads to pain sensitization release. Similarly, NIR irradiation was demonstrated to release a DNA agonist from gold nanorods, which dimerized DNA-modified chimeric or native RTK on cell surfaces and activated downstream signal transduction to control cytoskeletal remodeling, cell polarization, and directional migration¹¹⁰.

Challenge and outlook

The cell membrane functions as a physical barrier to protect the interior and regulates cellular behaviors via transmembrane signaling. Signaling information is transmitted from the receptor on the plasma membrane across the cytoplasm to stimulate cellular responses. Research into signal transduction provides new

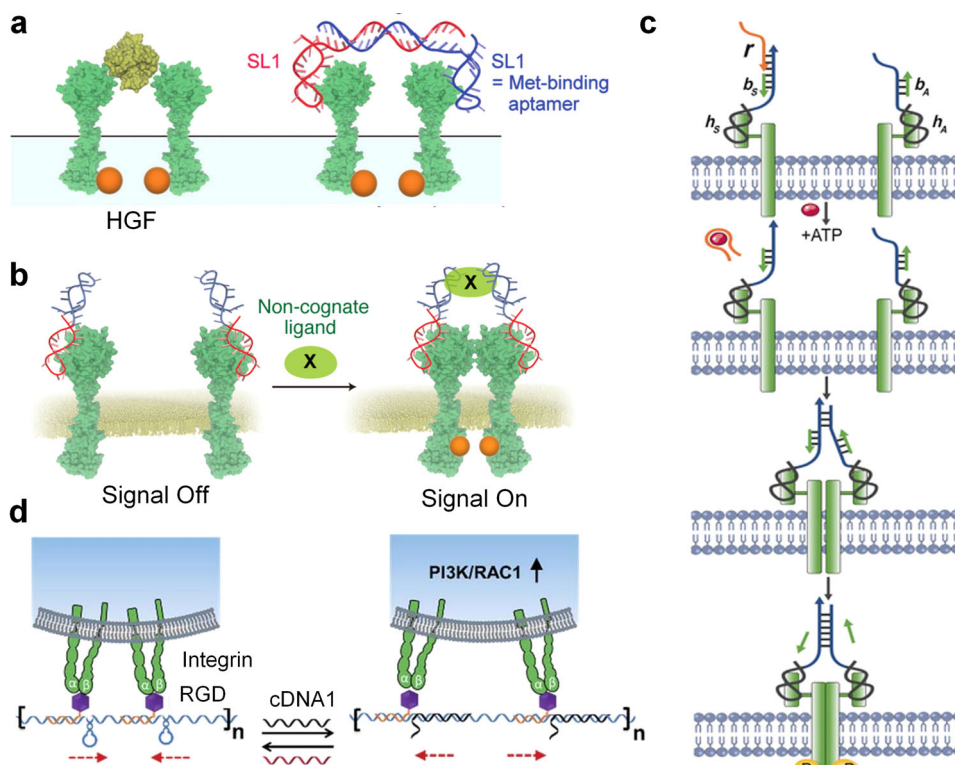


Fig. 6 DNA structures mediated receptor clustering. **a** Oligonucleotide-based HGF mimetics induces Met dimerization. **b** Reprogramming of the ligand specificity of growth factor receptors with bispecific DNA aptamers as non-cognate ligands. **c** ATP-responsive DNA-mediated chemically induced dimerization. **d** Reversible control of integrin clustering and de-clustering with a DNA nanospring, which allows for regulation of intracellular signaling pathways and cell morphology. **a** Adapted with permission from ref. ¹¹⁵, Copyright Wiley-VCH, 2016; **b** adapted with permission from ref. ¹¹⁶, Copyright American Chemical Society, 2017; **c** adapted with permission from ref. ¹⁰⁹, Copyright Wiley-VCH, 2018; **d** adapted with permission from ref. ¹²⁰, Copyright Royal Chemical Society, 2017.

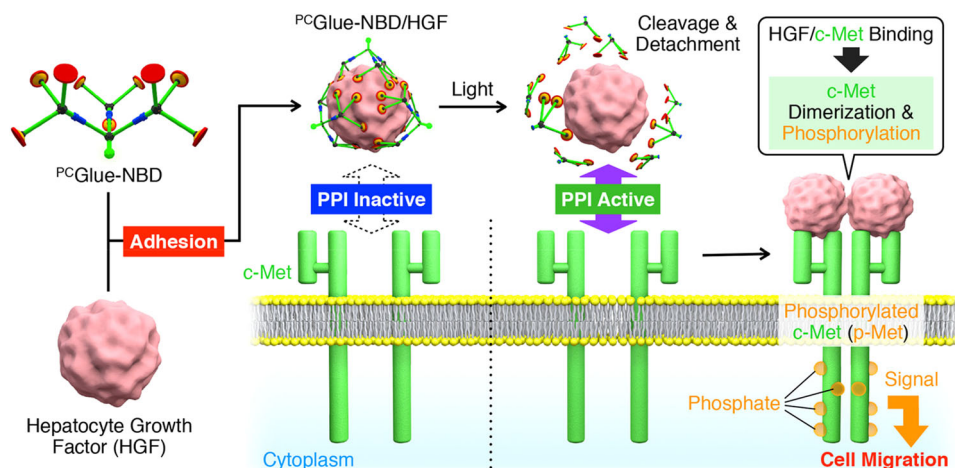


Fig. 7 Photo-controlled protein-protein interaction. Proposed mechanism of a supramolecular glue-mediated off/on switching of ligand-receptor interaction between HGF and c-Met. The glue molecules adhere to HGF and suppress the affinity between HGF and c-Met. Upon exposure to UV light, the glue on HGF is degraded at photocleavable linkages to reduce the multivalency and weaken adhesion, which activates HGF binding to c-Met and initiates dimerization and phosphorylation of receptor. Adapted with permission from ref. ¹²⁶, Copyright American Chemical Society, 2019.

opportunities to the development of novel therapeutic materials and methods. Biomimetic signal transduction systems have been broadly explored in both synthetic bilayers and living cells.

Key to the development of artificial signaling system is the design of synthetic receptors that sense the external cues, translate this signal into another kind and amplify the signal to elicit downstream responses. A prerequisite for artificial receptors is

the ability to recognize specific messengers via monovalent or multivalent interactions. Recent progress has witnessed the development of artificial signaling systems that are capable of sensing small molecules, pH, metal ions, albeit with the binding of low specificity. However, it remains challenging to develop synthetic receptors capable of sensing biologically relevant endogenous ligands such as hormones and neurotransmitters.

Besides, cells can respond to a variety of physical clues such as mechanical stimuli and electrical pulses, which remain largely unexplored in synthetic systems.

Three main mechanisms, i.e., receptor dimerization, GPCR mode and molecular translocation, have been explored to realize signaling across the synthetic lipid membranes. Among these, signal transduction using artificial membrane-spanning GPCR receptors remains challenging since it requires precise control over receptor conformation and orientation inside the membrane. In this regard, computer-aided analysis (e.g., molecular dynamics simulation and machine learning) will help to gain a deep understanding of intramolecular forces and receptor-lipid interactions. Another unmet challenge is to generate an amplified signal output in artificial cells. In biology, cells use enzymes (e.g., protein kinases) to amplify the chemical signal and trigger a downstream cellular response. In synthetic systems, signal amplification is mainly achieved with small catalytic groups, where the magnitude of signal amplification is far less than that achieved with natural enzymes. To tackle this challenge, it is essential to develop enzyme-like catalytic compounds or nano-materials with comparable activity.

In living cells, reprogramming ligand-receptor interactions represents a powerful tool to regulate transmembrane signaling and downstream cellular responses. In a biologically relevant context, polypeptides and aptamers are selected as recognizing motifs through phage display and Sequential Evolution of Ligands by Exponential Enrichment (SELEX), respectively. To boost the efficacy of interfacial recognition, precise control over spatial organization, orientation, and conformational freedom of bioactive epitopes is demanded to optimize ligand-receptor interaction. Such complex recognition scenarios are achievable with sequence-specific polymers or precisely controlled self-assembly of DNA and polypeptides.

Reporting summary. Further information on research design is available in the Nature Portfolio Reporting Summary linked to this article.

Data availability

The data that support the findings of this study have been included in the manuscript. Any additional data are available from the corresponding author upon reasonable request.

Received: 7 March 2023; Accepted: 21 August 2023;

Published online: 28 August 2023

References

- Schlessinger, J. Cell signaling by receptor tyrosine kinases. *Cell* **103**, 211–225 (2000).
- Dorsam, R. T. & Gutkind, J. S. G-protein-coupled receptors and cancer. *Nat. Rev. Cancer* **7**, 79–94 (2007).
- Chatterjee, S. & Banerjee, D. K. In *Liposome Methods and Protocols* (eds Basu, S. C. & Basu, M.) 3–16 (Humana Press, 2002).
- Kamiya, K. & Takeuchi, S. Giant liposome formation toward the synthesis of well-defined artificial cells. *J. Mater. Chem. B* **5**, 5911–5923 (2017).
- Wang, X., Du, H., Wang, Z., Mu, W. & Han, X. Versatile phospholipid assemblies for functional synthetic cells and artificial tissues. *Adv. Mater.* **33**, 2002635 (2021).
- Weinberger, A. et al. Gel-assisted formation of giant unilamellar vesicles. *Biophys. J.* **105**, 154–164 (2013).
- Angelova, M. I. & Dimitrov, D. S. Liposome electroformation. *Faraday Discuss. Chem. Soc.* **81**, 303–311 (1986).
- Pautot, S., Frisken, B. J. & Weitz, D. A. Production of unilamellar vesicles using an inverted emulsion. *Langmuir* **19**, 2870–2879 (2003).
- Abkarian, M., Loiseau, E. & Massiera, G. Continuous droplet interface crossing encapsulation (CDICE) for high throughput monodisperse vesicle design. *Soft Matter* **7**, 4610–4614 (2011).
- Shum, H. C., Lee, D., Yoon, I., Kodger, T. & Weitz, D. A. Double emulsion templated monodisperse phospholipid vesicles. *Langmuir* **24**, 7651–7653 (2008).
- Stachowiak, J. C. et al. Unilamellar vesicle formation and encapsulation by microfluidic jetting. *Proc. Natl Acad. Sci. USA* **105**, 4697–4702 (2008).
- Deng, N.-N., Yelleswarapu, M., Zheng, L. & Huck, W. T. S. Microfluidic assembly of monodisperse vesosomes as artificial cell models. *J. Am. Chem. Soc.* **139**, 587–590 (2017).
- Shum, H. C., Kim, J.-W. & Weitz, D. A. Microfluidic fabrication of monodisperse biocompatible and biodegradable polymersomes with controlled permeability. *J. Am. Chem. Soc.* **130**, 9543–9549 (2008).
- Matosevic, S. & Paegel, B. M. Stepwise synthesis of giant unilamellar vesicles on a microfluidic assembly line. *J. Am. Chem. Soc.* **133**, 2798–2800 (2011).
- Wu, H., Du, X., Meng, X., Qiu, D. & Qiao, Y. A three-tiered colloidosomal microreactor for continuous flow catalysis. *Nat. Commun.* **12**, 6113 (2021).
- Dou, H. et al. Higher-order assembly of crystalline cylindrical micelles into membrane-extendable colloidosomes. *Nat. Commun.* **8**, 426 (2017).
- Wei, M., Lin, Y. & Qiao, Y. Engineered colloidosomes as biomimetic cellular models. *Giant* **13**, 100143 (2023).
- Zhang, S. et al. Unraveling functional significance of natural variations of a human galectin by glycodendrimerosomes with programmable glycan surface. *Proc. Natl Acad. Sci. USA* **112**, 5585–5590 (2015).
- Zhang, S. et al. Glycodendrimerosomes from sequence-defined janus glycodendrimers reveal high activity and sensor capacity for the agglutination by natural variants of human lectins. *J. Am. Chem. Soc.* **137**, 13334–13344 (2015).
- Marguet, M., Bonduelle, C. & Lecommandoux, S. Multicompartmentalized polymeric systems: towards biomimetic cellular structure and function. *Chem. Soc. Rev.* **42**, 512–529 (2013).
- Chandrawati, R. & Caruso, F. Biomimetic liposome- and polymersome-based multicompartmentalized assemblies. *Langmuir* **28**, 13798–13807 (2012).
- Chandrawati, R. et al. Engineering advanced capsosomes: maximizing the number of subcompartments, cargo retention, and temperature-triggered reaction. *ACS Nano* **4**, 1351–1361 (2010).
- Städler, B. et al. Polymer hydrogel capsules: en route toward synthetic cellular systems. *Nanoscale* **1**, 68–73 (2009).
- Huang, X. et al. Interfacial assembly of protein-polymer nano-conjugates into stimulus-responsive biomimetic protocells. *Nat. Commun.* **4**, 2239 (2013).
- Qiao, Y., Li, M., Booth, R. & Mann, S. Predatory behaviour in synthetic protocell communities. *Nat. Chem.* **9**, 110 (2016).
- Mu, W. et al. Membrane-confined liquid-liquid phase separation toward artificial organelles. *Sci. Adv.* **7**, eabf9000 (2021).
- Wang, X., Liu, X. & Huang, X. Bioinspired protein-based assembling: toward advanced life-like behaviors. *Adv. Mater.* **32**, 2001436 (2020).
- Hanczyc, M. M., Fujikawa, S. M. & Szostak, J. W. Experimental models of primitive cellular compartments: encapsulation, growth, and division. *Science* **302**, 618–622 (2003).
- Dreher, Y., Jahnke, K., Bobkova, E., Spatz, J. P. & Göpfrich, K. Division and regrowth of phase-separated giant unilamellar vesicles. *Angew. Chem. Int. Ed.* **60**, 10661–10669 (2021).
- Andes-Koback, M. & Keating, C. D. Complete budding and asymmetric division of primitive model cells to produce daughter vesicles with different interior and membrane compositions. *J. Am. Chem. Soc.* **133**, 9545–9555 (2011).
- Zong, W. et al. A fissionable artificial eukaryote-like cell model. *J. Am. Chem. Soc.* **139**, 9955–9960 (2017).
- Zhu, T. F., Adamala, K., Zhang, N. & Szostak, J. W. Photochemically driven redox chemistry induces protocell membrane pearling and division. *Proc. Natl Acad. Sci. USA* **109**, 9828–9832 (2012).
- Haluska, C. K. et al. Time scales of membrane fusion revealed by direct imaging of vesicle fusion with high temporal resolution. *Proc. Natl Acad. Sci. USA* **103**, 15841–15846 (2006).
- Marsden, H. R., Tomatsu, I. & Kros, A. Model systems for membrane fusion. *Chem. Soc. Rev.* **40**, 1572–1585 (2011).
- Wang, X. et al. Chemical communication in spatially organized protocell colonies and protocell/living cell micro-arrays. *Chem. Sci.* **10**, 9446–9453 (2019).
- Tian, L., Li, M., Patil, A. J., Drinkwater, B. W. & Mann, S. Artificial morphogen-mediated differentiation in synthetic protocells. *Nat. Commun.* **10**, 3321 (2019).
- Buddingh', B. C., Elzinga, J. & van Hest, J. C. M. Intercellular communication between artificial cells by allosteric amplification of a molecular signal. *Nat. Commun.* **11**, 1652 (2020).
- Kumar, B. V. V. S. P., Patil, A. J. & Mann, S. Enzyme-powered motility in buoyant organoclay/DNA protocells. *Nat. Chem.* **10**, 1154–1163 (2018).

39. Wilson, D. A., Nolte, R. J. M. & van Hest, J. C. M. Autonomous movement of platinum-loaded stomatocytes. *Nat. Chem.* **4**, 268–274 (2012).
40. Mukwaya, V., Mann, S. & Dou, H. Chemical communication at the synthetic cell/living cell interface. *Commun. Chem.* **4**, 161 (2021).
41. Barba-Bon, A., Nilam, M. & Hennig, A. Supramolecular chemistry in the biomembrane. *ChemBioChem* **21**, 886–910 (2020).
42. Bickerton, L. E., Johnson, T. G., Kerckhoffs, A. & Langton, M. J. Supramolecular chemistry in lipid bilayer membranes. *Chem. Sci.* **12**, 11252–11274 (2021).
43. Ma, M., Gong, Y. & Bong, D. Lipid membrane adhesion and fusion driven by designed, minimally multivalent hydrogen-bonding lipids. *J. Am. Chem. Soc.* **131**, 16919–16926 (2009).
44. Ma, M., Paredes, A. & Bong, D. Intra- and intermembrane pairwise molecular recognition between synthetic hydrogen-bonding phospholipids. *J. Am. Chem. Soc.* **130**, 14456–14458 (2008).
45. Dong, J. & Davis, A. P. Molecular recognition mediated by hydrogen bonding in aqueous media. *Angew. Chem. Int. Ed.* **60**, 8035–8048 (2021).
46. Menger, F. M. & Zhang, H. Self-adhesion among phospholipid vesicles. *J. Am. Chem. Soc.* **128**, 1414–1415 (2006).
47. Nalluri, S. K. M. & Ravoo, B. J. Light-responsive molecular recognition and adhesion of vesicles. *Angew. Chem. Int. Ed.* **49**, 5371–5374 (2010).
48. Nalluri, S. K. M., Voskuhl, J., Bultema, J. B., Boekema, E. J. & Ravoo, B. J. Light-responsive capture and release of DNA in a ternary supramolecular complex. *Angew. Chem. Int. Ed.* **50**, 9747–9751 (2011).
49. Voskuhl, J., Stuart, M. C. A. & Ravoo, B. J. Sugar-decorated sugar vesicles: lectin-carbohydrate recognition at the surface of cyclodextrin vesicles. *Chem. Eur. J.* **16**, 2790–2796 (2010).
50. Stengel, G., Zahn, R. & Höök, F. DNA-induced programmable fusion of phospholipid vesicles. *J. Am. Chem. Soc.* **130**, 2372–2372 (2008).
51. Feng, L. et al. Recent advances of DNA nanostructure-based cell membrane engineering. *Adv. Healthc. Mater.* **10**, 2001718 (2021).
52. van Lengerich, B. et al. Individual vesicle fusion events mediated by lipid-anchored DNA. *Biophys. J.* **105**, 409–419 (2013).
53. Richard, A. et al. Fusogenic supramolecular vesicle systems induced by metal ion binding to amphiphilic ligands. *Proc. Natl Acad. Sci. USA* **101**, 15279–15284 (2004).
54. Chiruvolu, S. et al. Higher order self-assembly of vesicles by site-specific binding. *Science* **264**, 1753–1756 (1994).
55. Hernández-Ainsa, S. et al. Controlling the reversible assembly of liposomes through a multistimuli responsive anchored DNA. *Nano Lett.* **16**, 4462–4466 (2016).
56. Papahadjopoulos, D., Nir, S. & Düzgünes, N. Molecular mechanisms of calcium-induced membrane fusion. *J. Bioenerg. Biomembr.* **22**, 157–179 (1990).
57. Vasu, K. S., Naresh, K., Bagul, R. S., Jayaraman, N. & Sood, A. K. Detection of sugar-lectin interactions by multivalent dendritic sugar functionalized single-walled carbon nanotubes. *Appl. Phys. Lett.* **101**, 053701 (2012).
58. Rao, J., Lahiri, J., Isaacs, L., Weis, R. M. & Whitesides, G. M. A trivalent system from vancomycin-D-Ala-D-Ala with higher affinity than avidin-biotin. *Science* **280**, 708–711 (1998).
59. Wilchek, M. & Bayer, E. A. The avidin-biotin complex in bioanalytical applications. *Anal. Biochem.* **171**, 1–32 (1988).
60. Mora, N. L. et al. Controlled peptide-mediated vesicle fusion assessed by simultaneous dual-colour time-lapsed fluorescence microscopy. *Sci. Rep.* **10**, 3087 (2020).
61. Gruber, B. et al. Modular chemosensors from self-assembled vesicle membranes with amphiphilic binding sites and reporter dyes. *Angew. Chem. Int. Ed.* **49**, 7125–7128 (2010).
62. Gruber, B., Stadlbauer, S., Woinaroschy, K. & König, B. Luminescent vesicular receptors for the recognition of biologically important phosphate species. *Org. Biomol. Chem.* **8**, 3704–3714 (2010).
63. Davis, J. T., Okunola, O. & Quesada, R. Recent advances in the transmembrane transport of anions. *Chem. Soc. Rev.* **39**, 3843–3862 (2010).
64. Zheng, S.-P., Huang, L.-B., Sun, Z. & Barboiu, M. Self-assembled artificial ion-channels toward natural selection of functions. *Angew. Chem. Int. Ed.* **60**, 566–597 (2021).
65. Bekus, R. & Schrader, T. Artificial signal transduction. *ChemistryOpen* **9**, 667–682 (2020).
66. Vanuytsel, S., Carniello, J. & Wallace, M. I. Artificial signal transduction across membranes. *ChemBioChem* **20**, 2569–2580 (2019).
67. della Sala, F., Tilly, D. P. & Webb, S. J. In *New Trends in Macromolecular and Supramolecular Chemistry for Biological Applications* (eds Abadie, M. J. M., Pintea, M., & Rotaru, A.) 1–24 (Springer Int. Publ., 2021).
68. Barton, P., Hunter, C. A., Potter, T. J., Webb, S. J. & Williams, N. H. Transmembrane signalling. *Angew. Chem. Int. Ed.* **41**, 3878–3881 (2002).
69. Bernitzki, K. & Schrader, T. Entirely artificial signal transduction with a primary messenger. *Angew. Chem. Int. Ed.* **48**, 8001–8005 (2009).
70. Bernitzki, K., Maue, M. & Schrader, T. Artificial signal transduction with primary and secondary messengers. *Chem. Eur. J.* **18**, 13412–13417 (2012).
71. Chen, H. et al. Controlled dimerization of artificial membrane receptors for transmembrane signal transduction. *Chem. Sci.* **12**, 8224–8230 (2021).
72. Su, J. et al. Transmembrane signaling on a protocell: creation of receptor-enzyme chimeras for immunodetection of specific antibodies and antigens. *Sci. Rep.* **9**, 18189 (2019).
73. Chen, H. et al. DNA-based artificial receptors as transmembrane signal transduction systems for protocellular communication. *Angew. Chem. Int. Ed.* **62**, e202301559 (2023).
74. Tedesco, M. M., Ghebremariam, B., Sakai, N. & Matile, S. Modeling the selectivity of potassium channels with synthetic, ligand-assembled π slides. *Angew. Chem. Int. Ed.* **38**, 540–543 (1999).
75. Ousaka, N. & Inai, Y. Transfer of noncovalent chiral information along an optically inactive helical peptide chain: allosteric control of asymmetry of the C-terminal site by external molecule that binds to the N-terminal site. *J. Org. Chem.* **74**, 1429–1439 (2009).
76. Brown, R. A., Diemer, V., Webb, S. J. & Clayden, J. End-to-end conformational communication through a synthetic purineric receptor by ligand-induced helicity switching. *Nat. Chem.* **5**, 853–860 (2013).
77. Briocche, J. et al. Conformational switching of a foldamer in a multicomponent system by pH-filtered selection between competing noncovalent interactions. *J. Am. Chem. Soc.* **137**, 6680–6691 (2015).
78. De Poli, M. et al. Conformational photoswitching of a synthetic peptide foldamer bound within a phospholipid bilayer. *Science* **352**, 575–580 (2016).
79. Lister, F. G. A., Le Bailly, B. A. F., Webb, S. J. & Clayden, J. Ligand-modulated conformational switching in a fully synthetic membrane-bound receptor. *Nat. Chem.* **9**, 420–425 (2017).
80. Sogaard, A. B. et al. Transmembrane signaling by a synthetic receptor in artificial cells. *Nat. Commun.* **14**, 1646 (2023).
81. Bravin, C., Duindam, N. & Hunter, C. A. Artificial transmembrane signal transduction mediated by dynamic covalent chemistry. *Chem. Sci.* **12**, 14059–14064 (2021).
82. Liu, S. et al. Regulation of artificial supramolecular transmembrane signal transduction by selenium-containing artificial enzyme receptors. *Nano Res.* **16**, 964–969 (2023).
83. Lai, A. & Macdonald, P. M. Phospholipid lateral diffusion in the presence of cationic peptides as measured via ^{31}P CODEX NMR. *Biophys. Chem.* **295**, 106964 (2023).
84. McConnell, H. M. & Kornberg, R. D. Inside-outside transitions of phospholipids in vesicle membranes. *Biochemistry* **10**, 1111–1120 (1971).
85. Nguyen, M. H. L. et al. Peptide-induced lipid flip-flop in asymmetric liposomes measured by small angle neutron scattering. *Langmuir* **35**, 11735–11744 (2019).
86. Langton, M. J., Keymeulen, F., Ciaccia, M., Williams, N. H. & Hunter, C. A. Controlled membrane translocation provides a mechanism for signal transduction and amplification. *Nat. Chem.* **9**, 426–430 (2017).
87. Langton, M. J., Williams, N. H. & Hunter, C. A. Recognition-controlled membrane translocation for signal transduction across lipid bilayers. *J. Am. Chem. Soc.* **139**, 6461–6466 (2017).
88. Trevisan, L., Kocsis, I. & Hunter, C. A. Redox switching of an artificial transmembrane signal transduction system. *Chem. Commun.* **57**, 2196–2198 (2021).
89. Langton, M. J., Scriven, L. M., Williams, N. H. & Hunter, C. A. Triggered release from lipid bilayer vesicles by an artificial transmembrane signal transduction system. *J. Am. Chem. Soc.* **139**, 15768–15773 (2017).
90. Ding, Y., Williams, N. H. & Hunter, C. A. A synthetic vesicle-to-vesicle communication system. *J. Am. Chem. Soc.* **141**, 17847–17853 (2019).
91. Kocsis, I., Ding, Y., Williams, N. H. & Hunter, C. A. Transmembrane signal transduction by cofactor transport. *Chem. Sci.* **12**, 12377–12382 (2021).
92. Yang, H. et al. A system for artificial light signal transduction via molecular translocation in a lipid membrane. *Chem. Sci.* **13**, 2487–2494 (2022).
93. Hou, J. et al. Supramolecularly regulated artificial transmembrane signal transduction for ‘ON/OFF’-switchable enzyme catalysis. *Chem. Commun.* **58**, 5725–5728 (2022).
94. Li, H. et al. Artificial receptor-mediated phototransduction toward protocellular subcompartmentalization and signaling-encoded logic gates. *Sci. Adv.* **9**, eade5853 (2023).
95. Zhang, K., Gao, H., Deng, R. & Li, J. Emerging applications of nanotechnology for controlling cell-surface receptor clustering. *Angew. Chem. Int. Ed.* **58**, 4790–4799 (2019).
96. Ranzinger, J. et al. Nanoscale arrangement of apoptotic ligands reveals a demand for a minimal lateral distance for efficient death receptor activation. *Nano Lett.* **9**, 4240–4245 (2009).
97. Lehn, J.-M. Supramolecular materials: dynamic, responsive, adaptive. *Supramol. Mater.* **1**, 100007 (2022).
98. Zhu, M., Chen, J. & Lin, Y. Exploring chemical space and structural diversity of supramolecular peptide materials. *Supramol. Mater.* **2**, 100030 (2023).

99. Pashuck, E. T. et al. Controlled sub-nanometer epitope spacing in a three-dimensional self-assembled peptide hydrogel. *ACS Nano* **10**, 11096–11104 (2016).
100. Zhang, L. et al. Transformable peptide nanoparticles arrest HER2 signalling and cause cancer cell death in vivo. *Nat. Nanotechnol.* **15**, 145–153 (2020).
101. Li, J. et al. Supramolecular self-assembly-facilitated aggregation of tumor-specific transmembrane receptors for signaling activation and converting immunologically cold to hot tumors. *Adv. Mater.* **33**, 2008518 (2021).
102. Moyer, T. J. et al. Self-assembled peptide nanostructures targeting death receptor 5 and encapsulating paclitaxel as a multifunctional cancer therapy. *ACS Biomater. Sci. Eng.* **5**, 6046–6053 (2019).
103. Ito, K. et al. Artificial human Met agonists based on macrocycle scaffolds. *Nat. Commun.* **6**, 6373 (2015).
104. Miao, W. et al. Cellular signaling and gene expression profiles evoked by a bivalent macrocyclic peptide that serves as an artificial Met receptor agonist. *Sci. Rep.* **8**, 16492 (2018).
105. Nakase, I. et al. Signal transduction using an artificial receptor system that undergoes dimerization upon addition of a bivalent leucine-zipper ligand. *Angew. Chem. Int. Ed.* **51**, 7464–7467 (2012).
106. Nakase, I. et al. Receptor clustering and activation by multivalent interaction through recognition peptides presented on exosomes. *Chem. Commun.* **53**, 317–320 (2017).
107. Bi, S. et al. Cancer cell-selective membrane receptor clustering driven by VEGF secretion for in vivo therapy. *J. Am. Chem. Soc.* **145**, 5041–5052 (2023).
108. Chen, S. et al. Logic-gate-actuated DNA-controlled receptor assembly for the programmable modulation of cellular signal transduction. *Angew. Chem. Int. Ed.* **58**, 18186–18190 (2019).
109. Li, H. et al. A DNA-mediated chemically induced dimerization (D-CID) nanodevice for nongenetic receptor engineering to control cell behavior. *Angew. Chem. Int. Ed.* **57**, 10226–10230 (2018).
110. Wang, M. et al. Near-infrared light-activated DNA-agonist nanodevice for nongenetically and remotely controlled cellular signaling and behaviors in live animals. *Nano Lett.* **19**, 2603–2613 (2019).
111. Zhang, H. et al. CD71-specific aptamer conjugated with monomethyl auristatin e for the treatment of uveal melanoma. *ACS Appl. Mater. Interfaces* **14**, 32–40 (2022).
112. Wang, Y., Baars, I., Fördös, F. & Högberg, B. Clustering of death receptor for apoptosis using nanoscale patterns of peptides. *ACS Nano* **15**, 9614–9626 (2021).
113. Wang, J. et al. DNA-programed plasmon rulers decrypt single-receptor dimerization on cell membrane. *J. Am. Chem. Soc.* **145**, 1273–1284 (2023).
114. Ueki, R. & Sando, S. A DNA aptamer to c-Met inhibits cancer cell migration. *Chem. Commun.* **50**, 13131–13134 (2014).
115. Ueki, R., Ueki, A., Kanda, N. & Sando, S. Oligonucleotide-based mimetics of hepatocyte growth factor. *Angew. Chem. Int. Ed.* **55**, 579–582 (2016).
116. Ueki, R., Atsuta, S., Ueki, A. & Sando, S. Nongenetic reprogramming of the ligand specificity of growth factor receptors by bispecific DNA aptamers. *J. Am. Chem. Soc.* **139**, 6554–6557 (2017).
117. Wang, L. et al. Bispecific aptamer induced artificial protein-pairing: a strategy for selective inhibition of receptor function. *J. Am. Chem. Soc.* **141**, 12673–12681 (2019).
118. Ueki, R. et al. A chemically unmodified agonistic DNA with growth factor functionality for in vivo therapeutic application. *Sci. Adv.* **6**, eaay2801 (2020).
119. Akiyama, M. et al. DNA-based synthetic growth factor surrogates with fine-tuned agonism. *Angew. Chem. Int. Ed.* **60**, 22745–22752 (2021).
120. Zhang, K., Deng, R., Sun, Y., Zhang, L. & Li, J. Reversible control of cell membrane receptor function using DNA nano-spring multivalent ligands. *Chem. Sci.* **8**, 7098–7105 (2017).
121. Pavet, V. et al. Multivalent DR5 peptides activate the trail death pathway and exert tumoricidal activity. *Cancer Res.* **70**, 1101–1110 (2010).
122. Schneider, H. et al. Trail-inspired multivalent dextran conjugates efficiently induce apoptosis upon DR5 receptor clustering. *ChemBioChem* **20**, 3006–3012 (2019).
123. Lamanna, G. et al. Multimerization of an apoptogenic trail-mimicking peptide by using adamantane-based dendrons. *Chem. Eur. J.* **19**, 1762–1768 (2013).
124. Chu, T.-W., Yang, J., Zhang, R., Sima, M. & Kopeček, J. Cell surface self-assembly of hybrid nanoconjugates via oligonucleotide hybridization induces apoptosis. *ACS Nano* **8**, 719–730 (2014).
125. Valldorf, B. et al. An apoptosis-inducing peptidic heptad that efficiently clusters death receptor 5. *Angew. Chem. Int. Ed.* **55**, 5085–5089 (2016).
126. Mogaki, R., Okuro, K., Ueki, R., Sando, S. & Aida, T. Molecular glue that spatiotemporally turns on protein–protein interactions. *J. Am. Chem. Soc.* **141**, 8035–8040 (2019).
127. Kohata, A. et al. Photoreactive molecular glue for enhancing the efficacy of DNA aptamers by temporary-to-permanent conjugation with target proteins. *J. Am. Chem. Soc.* **143**, 13937–13943 (2021).
128. Kang, P. et al. Transient photoinactivation of cell membrane protein activity without genetic modification by molecular hyperthermia. *ACS Nano* **13**, 12487–12499 (2019).

Acknowledgements

This work was financially supported by the National Natural Science Foundation of China (22172007), the Science Fund for Creative Research Groups of the National Natural Science Foundation of China (52221006) and the Fundamental Research Funds for the Central Universities (buctrc202015 and PT2208).

Author contributions

K.S., C.S., and Y.W. conducted the literature search and prepared the first draft of the paper and the figures. Y.L. proposed the idea. R.C. and Y.L. supervised, reviewed, and edited the paper. All authors revised and discussed the final manuscript.

Competing interests

Rona Chandrawati is an Editorial Board Member for Communications Materials and was not involved in the editorial review, or the decision to publish, this Article. All other authors declare no competing interests.

Additional information

Supplementary information The online version contains supplementary material available at <https://doi.org/10.1038/s43246-023-00394-z>.

Correspondence and requests for materials should be addressed to Yiyang Lin.

Peer review information *Communications Materials* thanks Lixin Wu and the other, anonymous, reviewer(s) for their contribution to the peer review of this work. Primary Handling Editors: Jet-Sing Lee and John Plummer.

Reprints and permission information is available at <http://www.nature.com/reprints>

Publisher's note Springer Nature remains neutral with regard to jurisdictional claims in published maps and institutional affiliations.



Open Access This article is licensed under a Creative Commons Attribution 4.0 International License, which permits use, sharing, adaptation, distribution and reproduction in any medium or format, as long as you give appropriate credit to the original author(s) and the source, provide a link to the Creative Commons license, and indicate if changes were made. The images or other third party material in this article are included in the article's Creative Commons license, unless indicated otherwise in a credit line to the material. If material is not included in the article's Creative Commons license and your intended use is not permitted by statutory regulation or exceeds the permitted use, you will need to obtain permission directly from the copyright holder. To view a copy of this license, visit <http://creativecommons.org/licenses/by/4.0/>.

© The Author(s) 2023