






Author Correction: L1CAM defines the regenerative origin of metastasis-initiating cells in colorectal cancer

Karuna Ganesh, Harihar Basnet, Yasemin Kaygusuz, Ashley M. Laughney, Lan He, Roshan Sharma, Kevin P. O'Rourke, Vincent P. Reuter, Yun-Han Huang, Mesruh Turkecul, Ekrem Emrah Er, Ignas Masilionis, Katia Manova-Todorova, Martin R. Weiser, Leonard B. Saltz, Julio Garcia-Aguilar , Richard Koche , Scott W. Lowe , Dana Pe'er, Jinru Shia  and Joan Massagué 

Correction to: *Nature Cancer* <https://doi.org/10.1038/s43018-019-0006-x>, published online 13 January 2020.

In the version of this article initially published, the values for CRC190P (159, 165, 160, 40, 22) were incorrect in the Source Data file for Fig. 1g (a duplication of the values for CRC41Li), which resulted in an error in the plot in Fig. 1g. Those values are now correct (103, 118, 98, 20, 36) in the Source Data, and the correct Fig. 1g is now provided. The errors have been corrected in the HTML and PDF versions of the article.

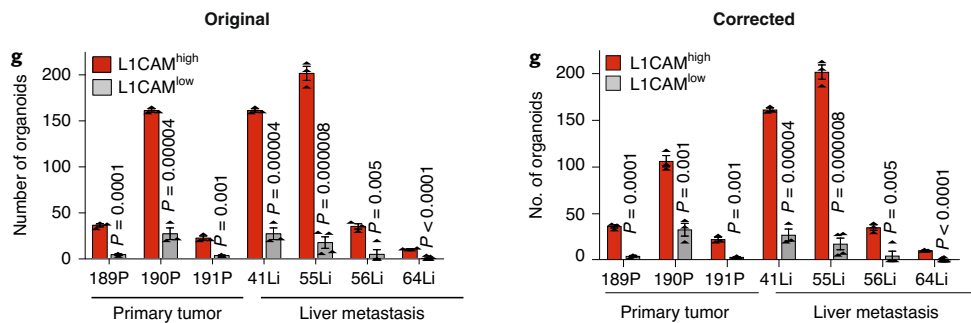


Fig. 1 | Original and Corrected.

Published online: 30 September 2020

<https://doi.org/10.1038/s43018-020-00130-3>

© The Author(s), under exclusive licence to Springer Nature America, Inc. 2020