

Fourier synthesis dispersion engineering of photonic crystal microrings for broadband frequency combs

Grégory Moille^{1,2}, Xiyuan Lu^{1,2}, Jordan Stone^{1,2}, Daron Westly² & Kartik Srinivasan^{1,2}

Dispersion engineering of microring resonators is crucial for optical frequency comb applications, to achieve targeted bandwidths and powers of individual comb teeth. However, conventional microrings only present two geometric degrees of freedom – width and thickness – which limits the degree to which dispersion can be controlled. We present a technique where we tune individual resonance frequencies for arbitrary dispersion tailoring. Using a photonic crystal microring resonator that induces coupling to both directions of propagation within the ring, we investigate an intuitive design based on Fourier synthesis. Here, the desired photonic crystal spatial profile is obtained through a Fourier relationship with the targeted modal frequency shifts, where each modal shift is determined based on the corresponding effective index modulation of the ring. Experimentally, we demonstrate several distinct dispersion profiles over dozens of modes in transverse magnetic polarization. In contrast, we find that the transverse electric polarization requires a more advanced model that accounts for the discontinuity of the field at the modulated interface. Finally, we present simulations showing arbitrary frequency comb spectral envelope tailoring using our Fourier synthesis approach.

¹Joint Quantum Institute, NIST/University of Maryland, College Park, MD, USA. ²Microsystems and Nanotechnology Division, National Institute of Standards and Technology, Gaithersburg, MD, USA. ✉email: gmoille@umd.edu

Frequency combs based on integrated nonlinear microresonators are a powerful tool to bring metrology outside the lab. They allow for low power consumption and portability¹ while maintaining metrological quality² while in the dissipative Kerr soliton (DKS) regime. Although octave-spanning frequency combs—needed for carrier-envelope stabilization through self-referencing of the comb—have been demonstrated^{3,4}, reaching beyond an octave is particularly interesting so that the strong pump can be doubled in self-referencing schemes. Yet, it is extremely challenging, especially at short wavelengths towards the visible. Materials that are used for microcomb generation, including Si₃N₄^{5–9}, AlN¹⁰, and LiNbO₃¹¹, present increasingly large normal dispersion the shorter the wavelength is^{12–14}. Modal confinement of the light in resonators with wavelength-scale cross-sections adds a geometrical component to the dispersion, which in many cases is enough to compensate for the normal material dispersion. However, a simple rectangular cross-section microresonator does not offer enough degrees of freedom to achieve broad enough anomalous dispersion (needed for bright DKS states) to tackle goals such as spectral bandwidths well-beyond an octave while extending well into the visible. Alternative approaches have been proposed. Among them, multi-pumped DKS⁸ and pulsed-pump resonators^{15,16} have been successful in realizing spectral bandwidths beyond that of conventional DKS microcombs. Yet, these solutions often increase the complexity of the setup required for field deployment of these microcombs. It is thus necessary to create additional methods through which one can engineer the dispersion of a microring resonator. Approaches with multi-layer material stacks¹⁷, complex ring cross-sections¹⁸ and concentric rings¹⁹—each relying on avoided-mode crossings—have generated much more complex dispersion profiles. However, fabrication has been challenging and may be incompatible with top-down foundry-like mass fabrication processes²⁰. In addition, broad bandwidth microcombs based on these approaches have not yet been demonstrated. Nevertheless, the concept of an avoided-mode crossing, which relies on mode-coupling, can be harnessed in different fashions, for example, by coupling the clockwise (CW) and counterclockwise (CCW) directions of the same transverse optical mode. Such CW/CCW coupling has been demonstrated by Lu et al., where modulation of the microresonator sidewall creates a photonic crystal that frequency splits a targeted mode without impacting the nearest neighbors, determined by the number of photonic crystal periods within the ring circumference²¹. Interestingly, nonlinear states such as optical parametric oscillation^{22–24} and DKSs can be created in this system²⁵. Moreover, this photonic crystal ring concept has been expanded to modulation amplitudes far beyond a simple perturbation, where a full band gap of hundreds of gigahertz to several terahertz is resolved, impacting the band structure among several neighboring modes²⁶. More importantly, for this work, it has been shown that it is possible to introduce multi-period photonic crystal patternings that create controlled frequency splittings for a few (up to 5) targeted modes²⁷. In particular, sinusoidal ring width modulations corresponding to multiple single modes targeted simultaneously (i.e., with different amplitudes and modulation periods) can be summed with limited impact to the other modes. In summary, ref.²⁷ lays out a methodology based on Fourier synthesis for microring dispersion engineering²⁸, where a spectral profile of mode coupling and corresponding shift of several individual modal frequencies follows a discrete Fourier transform of the ring width modulation.

Yet, whether a vast number of mode-couplings through Fourier synthesis – which remains a perturbative approach—can be implemented in a predictive manner that yields precise and efficient dispersion engineering consistent with the needs of, for

example, broadband microresonator frequency combs is still unclear. In this work, we propose to answer this question with an in-depth study of photonic-crystal-mediated microring dispersion engineering in the limit of large (tens of gigahertz) spectral shifts. We demonstrate that the previously utilized simple analysis that links the modal frequency shifts directly to ring width modulation is inaccurate in our regime of interest. In contrast, modulation of the ring effective refractive index, which is mapped (nonlinearly) to a ring width modulation, is a better approach. We also show that the polarization considered greatly impacts the validity of the perturbative approach with which this mode-by-mode dispersion engineering is predicted using our Fourier synthesis model. This limit arises from the boundary conditions on the dominant electric field components at discontinuous boundaries. Consequently, the transverse magnetic polarization is more suited for predictive dispersion engineering using our straightforward Fourier synthesis approach, while the transverse electric polarization may require an approach based on full three-dimensional numerical simulations of Maxwell's equations in modulated microring structures. Using our technique, we fabricate silicon nitride photonic crystal microrings in which dozens of resonances are shifted in a controlled fashion by up to 50 GHz, compatible with the integrated dispersion mitigation needed for broadband (e.g., octave-spanning) combs, and in good agreement with simulations. Finally, we use coupled Lugiato-Lefever equation modeling to predict the spectral behavior of microcombs that can be generated using our dispersion technique, and in particular, the possibility of considerably extending their bandwidth and the possibility of creating multi-color Bragg solitons.

Results

Towards a broad and flat microcomb spectrum: motivating photonic crystal dispersion engineering. Under the right conditions of pump power and detuning, microcombs based on third-order optical nonlinearity can support DKS states²⁹. The usual way of studying the dynamics of such a system is through the Lugiato-Lefever equation³⁰ which is essentially a dissipative nonlinear Schrödinger equation³¹ that takes into account the microring resonator's periodic boundary conditions while operating under a slow varying envelope (mean-field) approximation³². The single DKS solution in the anomalous dispersion regime follows the well-known hyperbolic secant (sech) spectral envelope (sech² for spectral intensity). To quantify the resonator dispersion, the community usually opts for a Taylor expansion and defines a quantity termed the integrated dispersion $D_{\text{int}} = \sum_{k > 1} \frac{D_k}{k!} \mu^k = \omega_{\text{res}} - (\omega_0 + D_1 \mu)$, with D_1 being the linear repetition rate at the pumped mode with resonant frequency ω_0 , and μ the azimuthal mode number referenced to the pumped mode. The higher order dispersion terms D_k are of great importance as they drive the shape of the integrated dispersion and, ultimately, the properties of the microcomb. The sech² comb envelope width is inversely proportional to D_2 , which must be positive for anomalous dispersion. The odd terms D_{2k+1} drive the recoil of the soliton, resulting in the drift of its repetition rate away from the linear one. The even terms D_{2k} are responsible for symmetric zero crossings of D_{int} and yield dual dispersive waves (DWs) as comb teeth become resonant at these modal frequencies. The experimental demonstrations of DWs⁵ have fundamentally changed the landscape of microcombs by bypassing the sech² width driven by D_2 and expanding it to octave span^{3,4}. In this work, we will refer to the frequency span between the $D_{\text{int}} = 0$ frequencies as the 'dispersive wave span' of the microcomb [Fig. 1a, b]. Although these DWs have been the key enabler for broadband microcombs, the power in these modes relies on the available power in the sech² soliton envelope. Therefore, if D_2

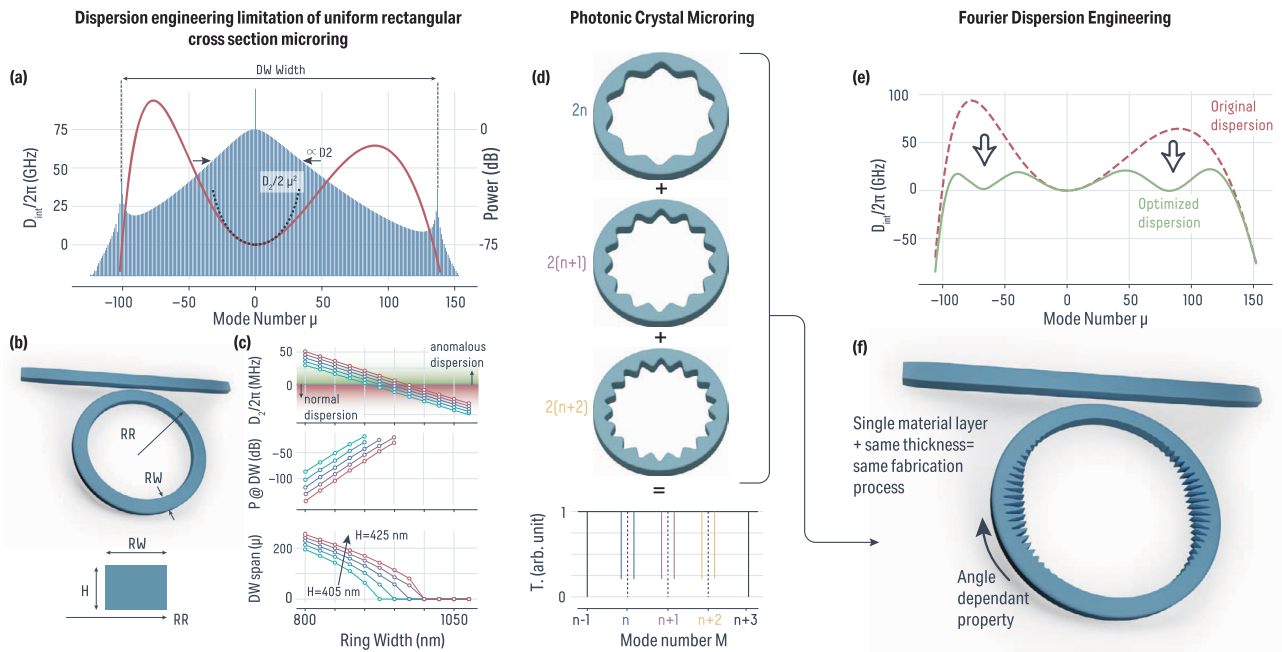


Fig. 1 Photonic crystal patterning for broadband microring dispersion engineering. **a** Simulated frequency comb (blue) assuming the D_{int} profile in red similar to that in ref. ³, and suitable for octave span thanks to dual-DWs. Positive quadratic dispersion ($D_2 > 0$) results in the sech^2 comb envelope near the pump, while further away, higher-order dispersion allows for zero-crossings where $D_{int} = 0$. This results in comb teeth on resonance, locally enhancing the power through DWs—and driving the overall bandwidth of the comb, while D_2 dictates the width of the sech^2 envelope. The soliton power (following the sech^2 envelope) at $D_{int} = 0$ impacts the generated DW power. **b** Standard microring resonator where three parameters are available for dispersion engineering, ring radius (RR), ring width (RW) and material thickness (H). **c** Variation of D_2 , power in the DW, and separation between the two potential DW locations (in units of mode number) as a function of ring width. These plots illustrate the trade-off between potential microcomb bandwidth and DW power, where the largest comb bandwidth (bottom panel) requires large D_2 (top panel) and hence a sharper sech^2 envelope that leads to lower available power at the D_{int} zero crossing for DW enhancement (middle panel). **d** Concept of a photonic crystal ring where a sinusoidal modulation of the ring at a period $2n$ will split the mode $M = n$ through CW/CCW coupling, with a strength dependent on the modulation amplitude. Within a certain regime of modulation amplitude, other azimuthal modes are not disturbed. Therefore, one can simply add modulations with different periods and amplitudes to selectively target different modes M with desired frequency splittings ($T =$ transmission in arbitrary units). **e** The frequency splittings modify D_{int} , resulting in a higher D_{int} branch and a lower D_{int} branch (shown in green). When a sufficiently large number of modes are split, the lower D_{int} branch can be flattened (i.e., largely reducing the maximum D_{int} value) to bypass the D_2 vs. potential comb bandwidth trade-off. **f** The resulting ring resonator has a ring width modulation profile that is the inverse DFT of the splitting of each mode that one wants to design, essentially equivalent to a Fourier synthesis approach. As a result, many split modes will produce a very localized ring-width modulation. This introduces challenges that we discuss throughout the rest of the paper.

is too large, leading to a sharp comb envelope close to the pump, the power available at the DW locations will be insignificant for resonant enhancement. This encapsulates the dispersion engineering challenge for broadband integrated frequency combs: getting as broad as possible the D_{int} zero-crossings while keeping the $D_2 > 0$ portion as flat as possible.

Guided-wave photonics results in wavelength-dependent light confinement: the longer the wavelength, the larger the mode and less confined it is. This unique feature allows one to tailor the dispersion beyond the material dispersion. For a microring resonator, there are essentially three user-defined input parameters: ring radius (RR), ring width (RW), and thickness (H) [Fig. 1b]. The RR mainly acts on D_1 and typically has little influence on the higher order dispersion terms. Therefore, most dispersion engineering efforts focus on RW and H . However, with only these two parameters available, the DW span and D_2 increase together [Fig. 1c]. Although increasing the comb width is the ultimate goal, increasing D_2 reduces the power available at the D_{int} zero-crossings, ultimately preventing useful DWs from forming. Thus, with current dispersion engineering approaches, an apparent trade-off exists.

In recent years, a modified microring resonator has been developed, where modulation of the ring width allows for coherent backscattering between the clockwise (CW) and

counter-clockwise (CCW) traveling wave modes^{21,27}. It has been demonstrated, using a perturbative approach theoretically and verified experimentally, that a single harmonic modulation of the ring width results in a single azimuthal mode of a given transverse spatial mode family experiencing this coupling²¹. These two coupled modes hybridize into symmetric and anti-symmetric modes, creating a mode splitting proportional to the amplitude of the modulation [Fig. 1d]. In the unmodulated ring, the necessity to match the field phase after one round trip results in a set of azimuthal modes described by a mode number $M \in \mathbb{Z}$. When the modulation is applied, a new spatial period $\pi RR/M_0 \ll 2\pi RR$ becomes important. Here, the modulation consists of $2M_0$ periods around the ring circumference. In the language of photonic crystals (PhCs)³³, the frequency splitting created by coupling of the CW and CCW azimuthal modes at $\pm M_0$ is a frequency band gap, with the Brillouin zone folded at these points as well. These modulated devices can thus be referred to as photonic crystal (PhC) microrings, and in the limit of strong modulation, large band gaps of several terahertz have been demonstrated while maintaining high optical quality factor (Q)²⁶. In addition, smaller modulation PhC microrings have been used to change the dynamics of DKS formation²⁵. For smaller modulations, it has also been shown that the splitting is linearly proportional to the modulation amplitude employed, and that the CW/CCW

coupling is nearly absent for all modes near the targeted mode M_0 ²⁷. Therefore multiple mode splittings (PhC modulations) can be implemented on a single ring. Following ref.²⁷, the design rules then become simple: a straightforward sum of individual modulation patterns gives the microring ring width modulation to implement [Fig. 1d], such that $RW_{\text{mod}} = \sum_m A(m) \cos(2m(\theta + \varphi))$ with $A(m)$ the modulation intensity of each targeted mode m and θ the microring azimuthal angle. Therefore, the total ring width modulation in this scheme is, per definition, the discrete inverse Fourier transformation (DFT) of the modal coupling envelope $A(m)$.

The frequency shift created by the CW/CCW coupling can be used to modify the dispersion of the resonator locally. The integrated dispersion is then shifted by half the resonance splitting at each coupled mode, creating two bands. One band is pushed toward higher D_{int} , and one reduces the value of D_{int} . The latter can overcome the aforementioned trade-off in large D_2 and large potential comb bandwidth if the Fourier synthesis design approach allows for predictive mode shifts in the tens of gigahertz range to counterbalance the maximum D_{int} value of an octave-spanning comb. By carefully engineering the coupling, one could create flatter integrated dispersion while obtaining a large comb width [Fig. 1e]. The resulting microring resonator undergoes a local ring width modulation consistent with the inverse DFT [Fig. 1f]. Such a system is compatible with standard single device layer fabrication as only the ring width as a function of angle is modified, and no other fabrication steps or materials are added.

Limitations of a direct implementation of the ring width modulation. In this section, we seek to verify the above approach for predictive dispersion engineering. We fabricate devices with $H = 440$ nm thick silicon nitride (Si_3N_4), nominal ring width $RW = 1450$ nm, and radius $RR = 60$ μm on top of silicon dioxide (SiO_2) without any top cladding other than air. We implement a targeted Gaussian modal envelope (in mode number space) defined by $RW_{\text{mod}}(\mu) = A_0^{\text{RW}} \exp^{-(\mu/\sqrt{2}\sigma)^2}$, where $\mu = M - M_0$ is the mode number relative to a centered one set at $M_0 = 392$ [Fig. 2a], and A_0^{RW} is chosen based on the desired maximum frequency splitting. At the moment, only the fundamental transverse electric mode (TE_0) will be considered, which we have determined through finite element method (FEM) simulation to be at 193.6 THz at M_0 . In the layout, we vary the maximum amplitude of the Gaussian A_0 and its width σ while other parameters are fixed. The resulting summed RW modulation profile follows, as expected, the inverse DFT profile (Fig. 2b). The envelope of the RW modulation is therefore also a Gaussian, and the mapping between frequency splitting of a given mode and real-space RW modulation amplitude is linear, based on the simple perturbative analysis from ref.²⁷. After summing these different modulations, the maximum real-space modulation of the ring width is $\max[RW_{\text{mod}}(\theta)] = A_0^{\text{RW}} \sigma \sqrt{2\pi}$, and is much larger than A_0^{RW} , which is the maximum of the modal Gaussian profile [Fig. 2a, b], and the consequences of which will be discussed shortly. The maximum RW modulation could be reduced if a phase shift is applied to each modal modulation. Yet, the symmetric and anti-symmetric modes arising from CW/CCW coupling are intrinsically standing waves, with their spatial mode profiles along the azimuthal direction locked by the node and anti-node positions of the modulation. Applying such a phase shift might not be desirable as it could reduce nonlinear interaction between modes. Thus, we will only study the extreme modulation case where $\varphi = 0$ for Fourier synthesis dispersion engineering, which if demonstrated to work should be applicable for arbitrary φ . A zoom-in scanning electron microscope image of

a fabricated device, created using high-resolution electron-beam lithography, is shown in Fig. 2c.

We proceed with transmission spectroscopy measurements between 185.18 THz and 198.6 THz (i.e., 1510 nm and 1620 nm) of the ring resonators with different modulation amplitude and width, where each resonance is spaced by a free spectral range of 398 GHz. A stacked-up representation of the transmission around each resonance is represented in Fig. 2d, highlighting the spectral profile of the modal coupling obtained (i.e., mode splitting vs. mode number). However, while overlapping this experimental data with the originally designed coupling from the direct inverse DFT, it is evident that none of the experimental data match. In particular, multiple behaviors are reported with the “collapsing” of the splitting around $\mu = 0$ for small modulation amplitude A and/or small width σ , while at large A and large σ , the modal coupling becomes much more unpredictable. The maximum coupling for each design has been calibrated with a single mode coupling at $\mu = 0$. It is worth reporting that $A_0^{\text{RW}} = 12.5$ nm and $\sigma = 8$ yields $\max[RW_{\text{mod}}(\theta)] = 250$ nm, which is far from the upper range of what has been previously experimentally verified and confirmed to match predictions based on a perturbative approach²⁷.

We propose that the discrepancy between designs and experiments comes from two fundamental interactions in the PhC ring, which we highlight through finite-difference time-domain (FDTD) simulations. Here, we consider a simple FDTD simulation whose intent is to provide a qualitative assessment of these complicating factors. To highlight qualitative features while retaining a small enough structure to avoid convergence and/or simulation time issues, we consider a waveguide containing two highly modulated regions, as shown in Fig. 2e. First, under a total modulation where the RW becomes small enough, a cavity-like effect will occur with boundaries localized at the local modulated sections of the ring [Fig. 2e (i)]. Essentially the propagating modes – either CW or CCW – will also be coupled to this cavity mode, making the mode splitting much more complex. We believe such an effect is mostly seen in the higher modulation case, as highlighted in $A_0^{\text{RW}} = 50$ nm and $\sigma = 8$. The second effect that comes into play is the multi-mode interference [Fig. 2e (ii)]. The RW modulation, in particular reducing the ring width, allows for a non-zero overlap between the higher-order transverse spatial modes of the unperturbed ring. Similar to an unoptimized racetrack resonator³⁴, this yields a coupling between these modes, which adds up to the CW/CCW one and creates a much more complex pattern of mode splitting. This multi-mode interference effect is also associated with higher radiation losses and quality factor asymmetry, as can be seen for $\mu > 5$ in the case of $A_0^{\text{RW}} = 50$ nm and $\sigma = 8$ in Fig. 2d.

Effective index approach: improved Fourier synthesis and polarization considerations. We have demonstrated that direct Fourier synthesis for predictable dispersion engineering using a simple RW modulation approach is inherently flawed when modulation amplitudes are sufficiently large. However, given that PhC band structures are intrinsically related to the modal n_{eff} in this section, we consider whether we can produce a better model for dispersion engineering with DFT design.

The modal effective refractive index is not linear with the RW , given that cut-off occurs in our asymmetrically air-clad system under a small enough RW and will grow asymptotically toward the silicon nitride index with large RW . Thus it is more suitable to apply the inverse DFT on the effective index modulation rather than the RW modulation [Fig. 3a]. The mapping between effective index n_{eff} and RW is easily achieved through finite element method simulations. Of course, this function will also

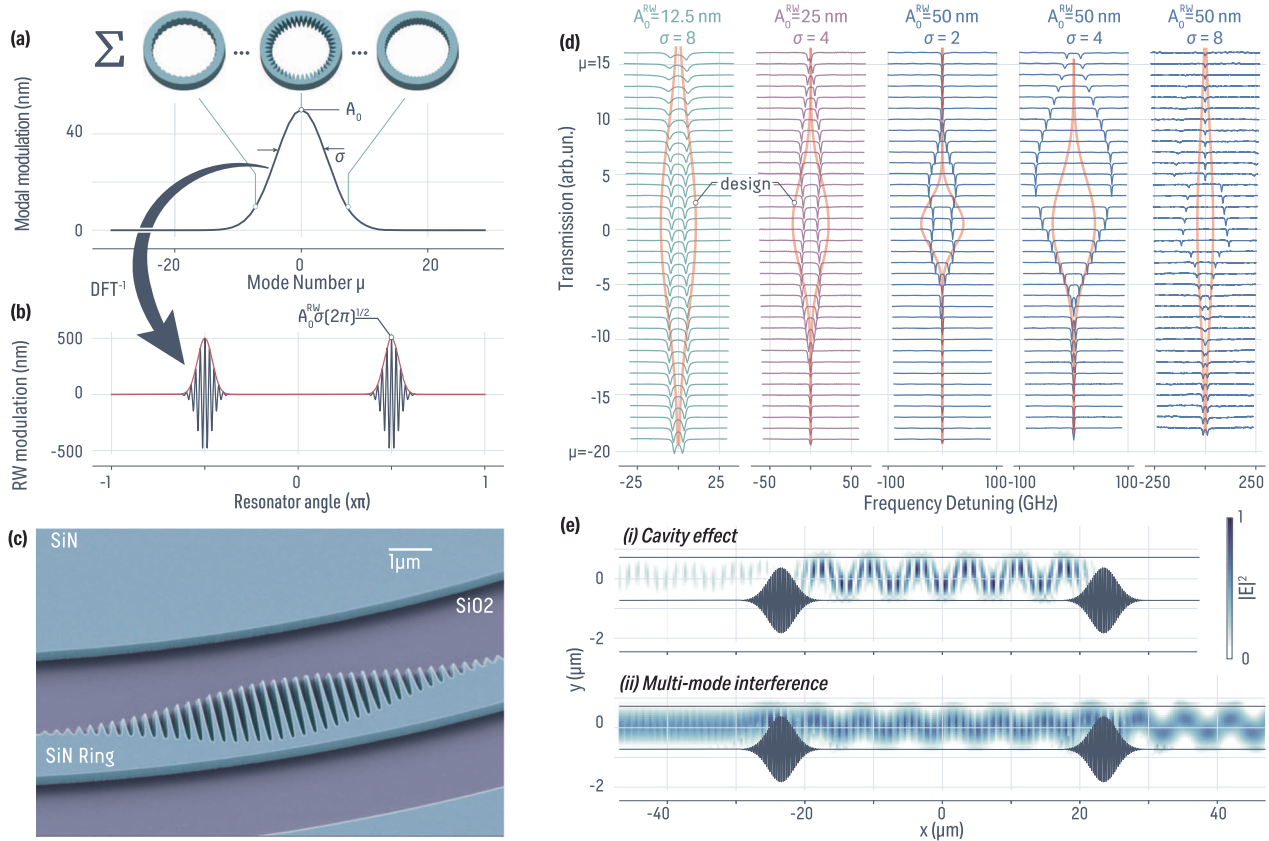


Fig. 2 Multiple mode-splitting from direct Fourier synthesis using the ring width modulation. **a** Modulation amplitude for each targeted mode following a Gaussian of width σ and maximum A_0 . Under the approximation that the RW modulation is linear with the mode splitting, this corresponds to the modal envelope of the CW/CCW coupling. **b** Following the Fourier synthesis of refs. 27,28, the sine modulation of each mode can be summed up, resulting in a discrete inverse Fourier transform for the total ring width modulation with the azimuthal angle. It is worth noting that the maximum RW modulation is far greater than the maximum modal modulation in (a). **c** SEM image of the fabricated Fourier synthesis PhC ring following the Gaussian modal coupling envelope. The resonator is an air-clad Si_3N_4 microring of ring radius $RR = 60 \mu\text{m}$, ring width $RW = 1450 \text{ nm}$, and thickness $H = 420 \text{ nm}$ on top of SiO_2 . **d** Experimental measurement of the mode splitting for different widths and amplitudes of the modal Gaussian envelope. The solid line represents the designed CW/CCW coupling, which does not follow the experimental results. **e** Two effects that play a critical role in the discrepancy between design and experiment. (top panel) A cavity effect occurs when the total RW modulation becomes comparable with the nominal RW, allowing a local cut-off and creating a Fabry-Pérot-like cavity. This cavity will couple with the traveling mode, yielding another shift of the resonance. (bottom panel) Apart from this cavity-like resonance, higher-order modes are coupled through the modulation, resulting in avoided mode-crossing(s) that impact the position of the resonances.

depend on thickness and ring radius, yet we assume they are fixed throughout this study. From the inverse DFT n_{eff} profile along the resonator angle, it is then possible to map the actual RW modulation that we have to fabricate using this simulated calibration of n_{eff} [Fig. 3b]. It is instructive to notice the difference between the modulation profile obtained by the previous direct RW modulation method and the one described in this section [Fig. 3c]. In the former case, the maximum RW modulation is close to the nominal one, creating a local RW close to zero, which is responsible for the cavity-like and higher-order mode coupling presented earlier. It can be understood that the local variation of n_{eff} is much stronger than expected, creating a local cut-off that leads to strong Bragg reflection at that point. However, in the n_{eff} modulation case, the RW modulation accounts for the nonlinear dependence of n_{eff} with the ring width, in particular, the narrower it becomes. Therefore, the ring does not present the same bottle-neck effect, which reduces the two spurious effects partially responsible for the mode splitting not following the intended design. In addition, the “teeth” of the PhC are much sharper than in the simple sine modulation case, which we believe also reduces the PhC cavity mode within the Bragg grating. This also suggests that the upper modulation limit is not

the unperturbed ring width, but is rather limited by either the disk n_{eff} (i.e., $RW \rightarrow RR$) or the cut-off RW. This maximum modulation can be tailored with the nominal RW, but a trade-off must be found to allow for operating in the correct dispersion regime of the resonator for a given application (e.g., weak anomalous dispersion for a bright, broadband soliton microcomb).

Based on this new inverse DFT process, we proceed to fabricate four types of modal coupling designs (Fig. 3d) made around the same microring parameters presented in the previous section. We implement the same Gaussian profile, as well as a Lorentzian one defined by $n_{\text{eff}}^{(\text{Lor})}(\mu) = A_0^{\text{neff}} \frac{1}{1+(\mu/\sigma)^2}$, a sinc pattern defined by $n_{\text{eff}}^{(\text{sinc})}(\mu) = A_0^{\text{neff}} \frac{\sin(\mu/\sigma)}{\mu/\sigma}$, and a linear profile $n_{\text{eff}}^{(\text{lin})}(\mu) = 2A_0^{\text{neff}} \frac{\mu}{\sigma}$ with $\mu \in [-\sigma, \sigma]$ and no coupling outside this range for this profile [Fig. 3e]. Measuring the TE_0 modes, we retrieve the mode splitting for each resonance, where once again, experimental data and the modal coupling design do not match [Fig. 3e], except for the sinc profile.

To understand the origin of this discrepancy, it is important to recall some basic boundary conditions put forth in Maxwell’s equation, that is, that the electric field is discontinuous at the

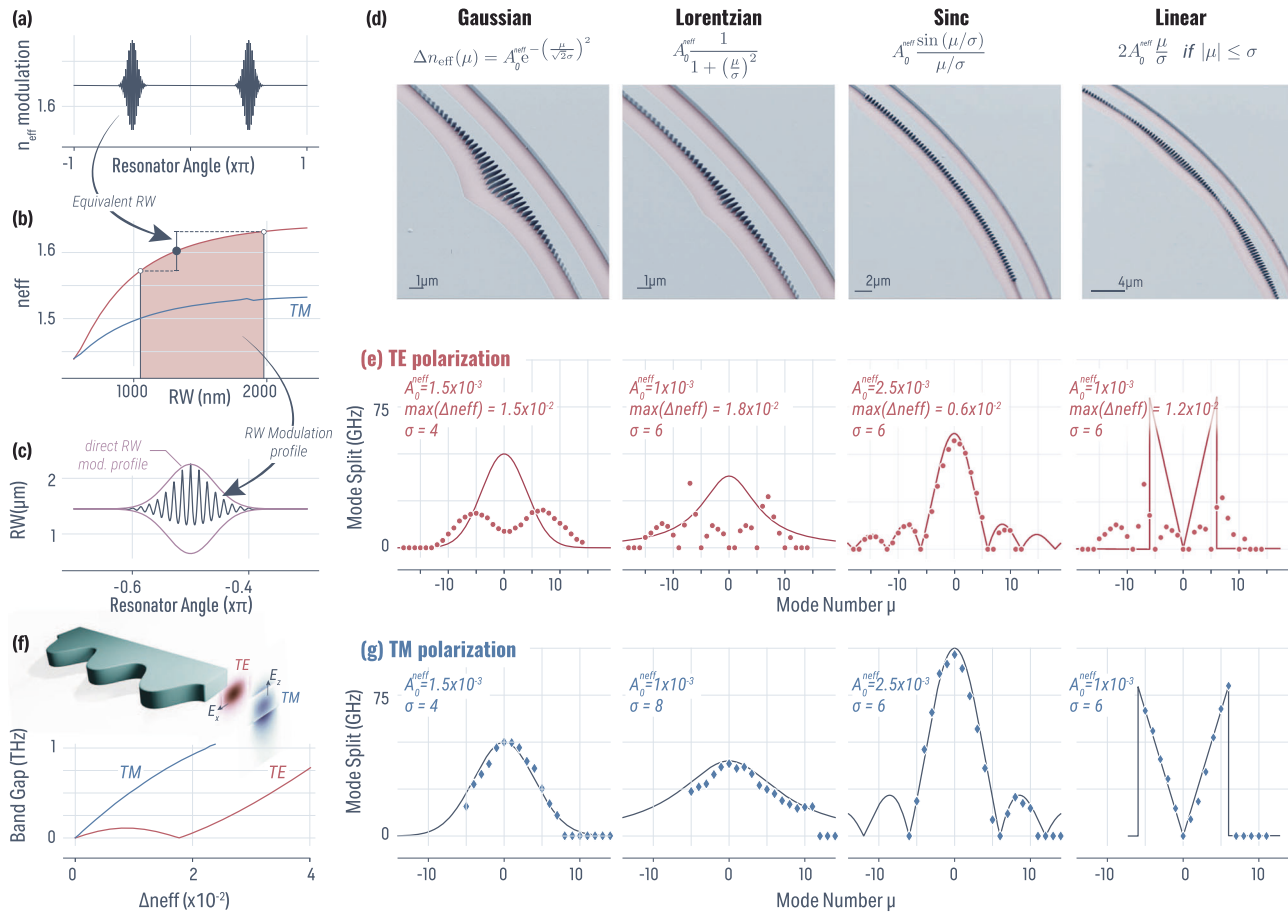


Fig. 3 Improved Fourier Synthesis dispersion engineering considering the effective index for transverse electric and magnetic fundamental modes.

a Instead of focusing on direct RW modulation, we focus on the effective index modulation, for which we apply the DFT and obtain the total n_{eff} modulation along the azimuthal angle of the resonator. **b** We can then map the RW modulation from this n_{eff} profile using FEM simulation for either TE or TM polarization. **c** Zoom-in of the resulting RW modulation from this n_{eff} Fourier synthesis method. The direct RW Fourier synthesis envelope is highlighted with a solid red line. We note that the minimal RW is much larger with this method, preventing the two spurious effect previously presented. The modulation “teeth” are also sharper. **d** Four different modal envelopes have been implemented: a Gaussian, Lorentzian, sinc, and linear. Each of them has been fabricated following the n_{eff} Fourier synthesis method. **e** Experimental result of the mode splitting (i.e., CW/CCW coupling) for each resonance and each envelope for the TE polarization. Only the sinc envelope follows the designed modal envelope, which we explain in the main text. **f** Fundamental consideration of the polarization needs to be accounted for, where the TE modes show discontinuity of the field at the modulated interface, while TM ones are not impacted. This results in a difference of band-gap behavior where the TE mode needs to account for a corrective term in the CW/CCW coupling³⁵, resulting in a band gap closing. The TM mode, however, has a continuous increase of the band gap with increasing n_{eff} gradient. **g** Measuring the TM polarization, where each designed modal envelope is reproduced by the mode-splitting experiment, as expected from the TE/TM band gap behavior difference. In **(e)** and **(g)**, the one standard deviation uncertainty in splitting values is smaller than the data point size.

orthogonal interfaces of the polarization. While in this work we have used a simple perturbative expression for the coupling term between the CW and CCW modes (albeit while taking into account the waveguide effective modal index dependence on width), more generally, the coupling term between the CW and CCW modes can be semi-analytically determined by assuming a one-dimensional Bragg grating with two coupled counterpropagating waves. The transverse magnetic (TM) polarization – with the dominant electric field component along the thickness direction of the ring – does not experience a discontinuity at the modulated interface, which is also true for the magnetic field in this case along the radial direction [Fig. 3f]. Therefore, the coefficient between CW/CCW coupling can be expressed as $J \propto \int_r \frac{1}{\epsilon} H(r)H(r)^* dr$ with $H(r)$ the magnetic mode profile along the radial direction of the ring. However, the TE mode experiences a discontinuity along the modulated ring wall. Thus, one needs to account for a correction term in the coupling such that $J \propto \int \epsilon(E(r)E(r)^* - \partial_r E(r)\partial_r E(r)^*) dr$ ³⁵. This translates into

different behaviors of the band-gap (i.e., splitting amplitude) between the two polarizations, where the TM mode exhibits a continuously increasing band gap while the TE mode undergoes a band gap closing with the increase of the refractive index contrast of the PhC (Fig. 3f, band gap obtained from FEM simulation). This difference in behavior can help explain the mismatch between design and experimental data in the TE polarization. Interestingly, the sinc profile effectively is a single targeted modulation M_0 that is truncated to match the sinc modal width. Therefore, much less effect due to the polarization will occur and the behavior is closer to the single mode splitting case, explaining the good agreement with the designed modal mode splitting profile. In addition, the maximum n_{eff} modulation for a given σ and A_0 is much smaller in the case of the sinc profile, which makes the system behave in the linear regime of band gap opening with modulation amplitude (e.g., as shown in Fig. 3f).

The above explanation suggests that the TM polarization should not suffer from such a theory-experiment disagreement

for any profile. We measured the same microrings in the TM mode, where $M_0 = 392$ is resonant at 204.6 THz [Fig. 3g]. As expected from the absence of band gap closing due to the field continuity with the RW modulation, the TM mode follows the intended modal coupling design for all of the profiles implemented. We note that the maximum obtained mode-splitting reached up to 100 GHz (i.e., coupling $J \simeq 50$ GHz), which is compatible with integrated dispersion mitigation for ultra-broad microcomb generation. Nevertheless, it is fair to assume that larger coupling strength can be easily implemented. The quality factor for both TE and TM is not particularly impacted in the spectral region where the coupling happens and remains at the $>5 \times 10^5$ level (see Methods Fig. 5). However, we believe that substantial losses will be introduced at shorter wavelengths. First, approaching the mode $2M_0$, the band folding will not occur between the two contra-propagative modes but instead with the Γ direction in the reciprocal space of the PhC (i.e., close to the surface normal direction). Therefore, the light will be extracted almost vertically. This is relevant for optical angular momentum generation^{36,37}, while for our frequency comb application, it will generate considerable loss given the strength of the PhC. Secondly, at short wavelengths, the RW modulation will not be subwavelength anymore, and will essentially act as a scattering element which is likely to cause losses.

Going forward, we note that with accurate modeling of the TE coupling between CW and CCW modes and the experimental demonstration of the band gap closing - which has already been observed in a large modulated PhC ring²⁶ - along with accurate predictions of the effective modal refractive index, it may be possible to effectively develop Fourier synthesis dispersion engineering accurately in this polarization, though it may also be the case that full numerical solution of Maxwell's equations within a modulating microring might be needed for accurate prediction of the dispersion. This work is outside of the scope of this manuscript; instead, in the next section, we focus on how understanding how the demonstrated Fourier synthesis dispersion engineering technique can impact microresonator frequency comb generation.

Broadband microcomb dispersion engineering and Bragg multi-color solitons using the Fourier synthesis approach. In this section, we numerically investigate the potential that the inverse DFT dispersion design could bring to ultra-broadband microcombs and the new kinds of microcombs that could be generated using this technique.

To accurately model the system, we use a set of linearly coupled Lugiato-Lefever equations (LLEs) that account for the CW and CCW interaction in the PhC ring. To account for the cross-phase modulation, we assume that the contra-propagative light will travel at twice the speed of light, given that the LLE is intrinsically in the moving frame of the light. Therefore, the cross-phase modulation can neglect the fast oscillations of the light and simply use the average of the contra-propagative mode power³⁸:

$$\begin{aligned} \dot{a}_{\uparrow,\downarrow}(\theta, t) = & \left(-\frac{\kappa}{2} + i\delta\omega\right)a_{\uparrow,\downarrow} + i\sum_{\mu} D_{\text{int}}(\mu)e^{-i\mu\theta}A_{\uparrow,\downarrow}(\mu, t) \\ & - i\sum_{\mu} J(\mu)e^{-i\mu\theta}A_{\downarrow,\uparrow}(\mu, t) \\ & + i\gamma L \left(|a_{\uparrow,\downarrow}|^2 + 2 \int_{-\pi}^{\pi} \frac{|a_{\downarrow,\uparrow}|^2}{2\pi} d\theta \right) a_{\uparrow,\downarrow} \\ & + \delta_{\uparrow} \sqrt{\kappa_{\text{ext}} P_{\uparrow}} \end{aligned} \quad (1)$$

where a_{\uparrow} and a_{\downarrow} are the envelope field in the CW and CCW mode, respectively, $\dot{a} = \partial a / \partial t$ the temporal derivative, $A_{\uparrow,\downarrow}(\mu, t) = \text{FT}[a_{\uparrow,\downarrow}(\theta, t)]$, the Fourier transform of the field in the

azimuthal direction, $J(\mu)$ is the coupling between CW/CCW mode μ arising from the PhC, which is mode dependant as previously designed and exhibits a minus sign because of the π phase shift induced by the reflection, $\kappa/2\pi = 755$ MHz and $\kappa_{\text{ext}} = \frac{1}{2}\kappa$ are the total loss rate and the coupling loss rate respectively (corresponding to a coupling and intrinsic quality factor $Q_i = Q_c = 7.50 \times 10^5$ at 283 THz, following Refs. ^{13,39}), $\delta\omega$ is the pump detuning relative to the pumped mode $\mu = 0$, $L = 2\pi \times 2 \times 23 \mu\text{m}$ is the resonator circumference, $\gamma = 2.3 \text{ W}^{-1}\text{.m}^{-1}$ is the effective Kerr nonlinearity, $P_{\uparrow} = 150$ mW is the input pump power in the CW mode, and δ_{\uparrow} is the Kronecker delta function.

In the case of interest in this manuscript, we will only focus on Fourier synthesis outside of the pumping region to tailor the integrated dispersion. Thus, our model assumes that any azimuthal component μ presenting $J(|\mu| \gg 0) \neq 0$, namely where the presented CW/CCW engineered mode coupling occurs, is far from the pump mode. Therefore, at the pump, $J(\mu = 0) = 0$ and only one propagative mode is excited in the LLE model. As stated earlier in Fig. 1a, the current state-of-the-art for dispersion engineering is to design both ring width and thickness to achieve the desired dispersion regime and comb width, which ultimately leads to a trade-off between bandwidth and flatness. Using our Fourier synthesis technique, one could use a very asymmetric D_{int} where the pump frequency and potential short dispersive wave position should be harmonic [Fig. 4a] corresponding to an oxide-clad device with ring width $RW = 1125$ nm and thickness $H = 770$ nm. However, the D_{int} barrier being too large and steep, no power is transferred through Cherenkov radiation to create an appreciable DW. Using a simple Gaussian spectral coupling profile, which can be added up around different modes to effectively decrease this barrier, it is not only possible to allow for sufficient energy transfer to create an appreciable DW [Fig. 4a], but also reach a level of flatness through the different pockets of anomalous dispersion that have been created through Fourier synthesis dispersion engineering. The azimuthal profile of the pulse remains similar to a DKS, while the CCW light, which only exists where the coupling is not zero, exhibits a pulse-train-like behavior.

In addition, the concept that CCW light exists only at frequencies where coupling happens is of great interest for metrology application on-chip, where usually complex interposers have to be created to filter, guide, and interfere different portions of the microcomb spectrum⁴⁰. In the case of the Fourier synthesis microcomb, one could imagine simplifying such an interposer greatly by harnessing the CW/CCW nature of the intra-cavity field [Fig. 4b]. Using a second drop bus waveguide allows only extracting the short wavelength where the CW/CCW coupling occurs, simplifying the filtering and routing of the downstream interposer.

Finally, we investigate the properties of the generated solitons in the presence of these new pockets of anomalous dispersion. As expected from previous studies^{18,41}, additional anomalous spectral windows can facilitate the exchange of energy through Cherenkov radiation—which is similar to the DW coupling to the soliton^{42,43} - as long as their relative dispersions overlap the same frequency grid. We investigate by applying the same Gaussian Fourier synthesis coupling to a regular integrated dispersion profile from a previously studied microring resonator³⁹, corresponding to $RW = 1060$ nm and $H = 440$ nm for the air-clad Si_3N_4 microring, and only the coupling amplitude J is modified [Fig. 4c]. Once the coupling is strong enough that the integrated dispersion in this spectral region becomes close enough to zero, Cherenkov radiation is permitted, allowing for the soliton to exchange energy with this other color and ultimately leading to a multi-color soliton. Interestingly, the second color of the soliton is entirely driven by the PhC and the Bragg reflection nature of the ring, creating a multi-color Bragg soliton^{44,45}. Increasing the

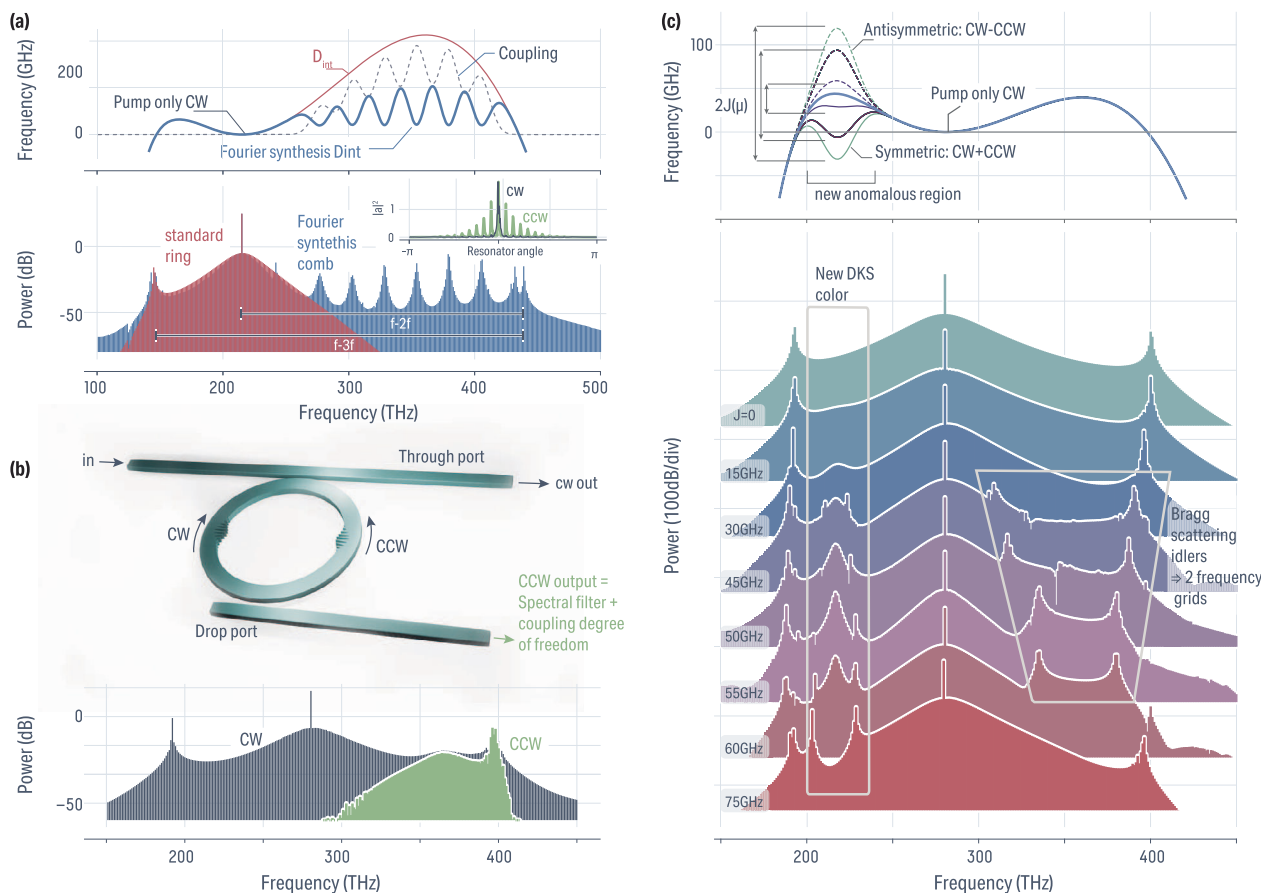


Fig. 4 Numerical investigation of frequency comb tailoring from Fourier synthesis dispersion engineering. **a** Through RW and H dispersion engineering design, it is possible to obtain a harmonic relationship between the pump and $D_{\text{int}} = 0$ position (i.e., potential DW position). Yet, as presented in the first section, the soliton does not have sufficient power at this spectral location, resulting in essentially no DW at high frequency (red). Yet, through Fourier synthesis, one could lower the D_{int} barrier so that enough power can be transferred to the DW. The design of the Fourier synthesis D_{int} is trivial as the only criterion is to lower it enough to be close to zero. Here we use multiple Gaussian modal envelopes resulting in a modulated D_{int} (blue). The resulting spectrum remains the same around the pump with additional new soliton colors thanks to the anomalous dispersion pocket created by the Fourier synthesis. This allows having enough energy at the D_{int} zero-crossing to generate a significant DW, which is harmonic with the pump. The inset represents the azimuthal profile of the soliton, with the CW component remaining close to a regular DKS and the CCW being a train of pulses. **b** The CCW component being a soliton allows for frequency filtering. Complex interposer systems have been proposed to process a DKS microcomb. Here, we propose that our Fourier synthesis system's intrinsic CW/CCW coupling allows for filtering the different comb spectral regions. For instance, by creating a CW/CCW coupling at high frequency (short wavelength), one could simply outcouple the CW light only to obtain these comb teeth without the main pump. **c** We investigate the property of the anomalous dispersion pockets that are created by our Fourier synthesis. We use the same Gaussian modal profile with different amplitude, resulting in an anomalous region minimum that is at different frequency detuning from $D_{\text{int}} = 0$. Through coupled LLE simulation, we notice that a new soliton color is created in this anomalous pocket. When this pocket goes below $D_{\text{int}} = 0$, new DWs are created on the other side of the pump. This behavior is similar to⁸, and highlights that the soliton in the anomalous pocket from Fourier synthesis lives at a fixed carrier envelope offset shift from the main soliton, resulting in a nonlinear coupling in the phase space that creates new idlers from four-wave mixing Bragg scattering.

coupling to reach a negative value of the integrated dispersion in the CW/CCW coupling region still allows for a multi-color soliton to exist. However, it is interesting to notice a new set of DWs on the other spectral side of the pump. These DWs – or idlers—are signs of two solitons traveling at the same speed (i.e., repetition rate) through cross-phase modulation coupling⁴⁶, yet offset from one another, which has been observed in photonic molecules^{47,48} and multi-pump DKS⁸ where such frequency interleaving might be harnessed for metrology applications.

Discussion. We have demonstrated a thorough approach for Fourier synthesis dispersion engineering of microring resonators. By summing the modulation at different amplitudes targeting several azimuthal modes, the azimuthal ring width variation can

be obtained by an inverse discrete Fourier transform. We note that photonic molecules^{47,49} (i.e., created by the coupling of two ring resonators) provide another mechanism to significantly alter dispersion compared to single ring resonators. In contrast to photonic molecules, where the coupling between the two rings' modes is dependent on the physical gap between them and is not dispersive enough to tailor modal frequencies on a mode-by-mode basis, our approach allows for a complete arbitrary spectral envelope (i.e., on-demand dispersion) by addressing modes individually. We further demonstrated that the simple ring width modulation approach is insufficient for the predictive design of avoided mode crossings between CW and CCW modes created by the photonic crystal. Instead, an effective refractive index approach inverse DFT, which is then mapped onto the ring width modulation, provides a much better accuracy for the mode

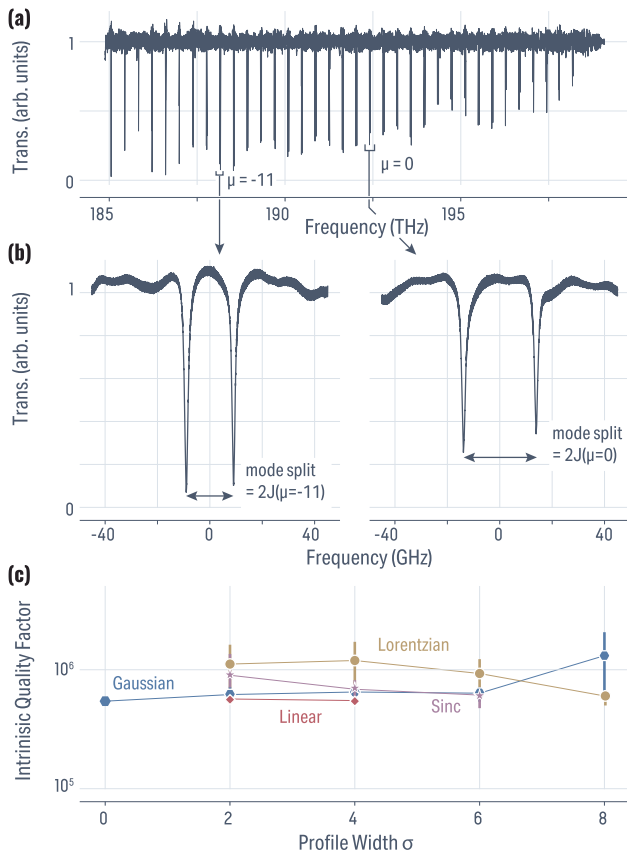


Fig. 5 Linear properties of a Fourier synthesis photonic crystal ring resonator. **a** Representative transmission spectrum of TE mode a measured photonic crystal ring resonator. We normalize the mode numbers μ from the center of the modal coupling envelope. **b** Zoom-in onto two set of mode at $\mu = 0$ and $\mu = -11$, from which we extract the coupling from the mode splitting. **c** Intrinsic quality factor extracted for each modal envelope presented in Fig. 3, where the data point represents the average value and the error bar is the standard deviation resulting from variation in Q across the mode splitting envelope (in some cases, the error bar is smaller than the data point size). The overall Q remains the same and one could conclude that the n_{eff} Fourier synthesis does not impact the intrinsic optical loss property of the ring. The error bar represent a standard variation obtain from the distribution of the Q over the resonance that are probed between 1510 nm and 1630 nm. When not displayed, the standard deviation is smaller than the marker.

splitting design. In addition, we discuss the implication of the polarization of the modes, where the transverse electric modes are intrinsically more complex to Fourier synthesize than the transverse magnetic modes due to electric field discontinuity along the ring width modulation. We demonstrated that using TM polarization, one can accurately reproduce a coupling design experimentally over twenty modes, following any arbitrary spectral envelope. Finally, we discuss through numerical simulations how such Fourier synthesis dispersion engineering can profoundly impact ultra-broadband microcombs and lead to interesting new physics with multi-color Bragg solitons. Although our work has focused on microcomb dispersion engineering using an effective refractive index profile that follows a sine modulation, it can be extended to other types of approach. First, any other periodic modulation profile, such as bead-like⁵⁰, rectangular^{51,52}, or spike-like⁵³ profiles studied previously, can be used in a Bloch expansion and hence are amenable to our Fourier synthesis approach. Moreover, in our photonic crystal rings, the Brillouin zone edge

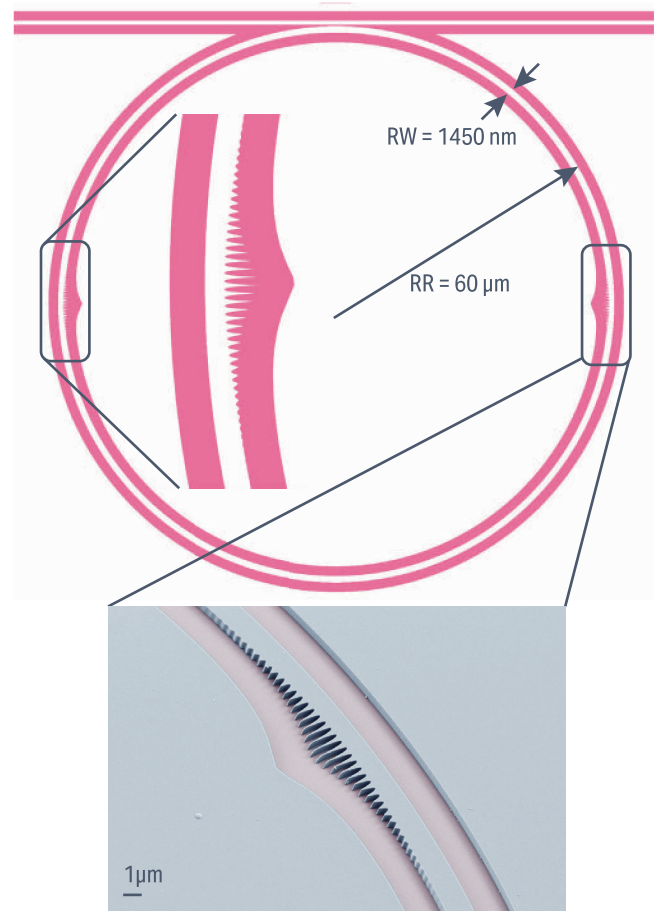


Fig. 6 Fabrication and patterning. Fabricated layout for the case of a Gaussian envelope. The left inset represents a zoom-in of the layout where the localized modulation resulting from the n_{eff} Fourier synthesis occurs. The bottom inset is an SEM image of the fabricated ring where the modulation 'teeth' are fully resolved.

remains below the light cone, yet coupling to the light cone can happen with double the modulation period and can find application in the ejection of orbital angular momentum beams⁵⁴ and the creation of optical vortex-generating microcombs^{53,55}. Our work can, for example, allow for multiplexing multiple OAM states for each individual comb line of a microcomb.

Methods

Additional data on mode splitting measurements. The mode-split and contra-propagative coupling strengths we present throughout the manuscript are extracted from linear measurements such as the one presented in Fig. 5a. In the case of the TE mode spectroscopy ranging from about 185 THz to 198 THz, the continuously tunable laser (CTL) is calibrated by simultaneously probing a tri-gas cell. Using the NIST calibration of H_{12}CN , ^{13}CO , and ^{13}CO absorption lines we are able to accurately retrieve the wavelength of the transmission scan. We define the normalized mode number μ relative to the centered mode-splitting, which is retrieved with a single-mode splitting device (i.e., sine modulation of the ring width), and each mode is then indexed from this mode, allowing to retrieve the coupling from the mode splitting [Fig. 5b]. From this linear spectroscopy data, we also extract the intrinsic and the coupling quality factors through a simple coupled mode-theory model⁵⁶. In Fig. 5c, we present the average intrinsic quality factor for the four modal coupling envelopes presented in Fig. 3 for the TE polarization, with the nominal spectral size σ for each envelope, with the error bar representing the standard variation of Q over the different modes measured. The intrinsic quality factor does not seem to be impacted and remains close to a million with little variation over the different modes, although the modulation of the ring width is extremely local (see the following section). The excess radiation losses induced by the photonic crystal modulation can therefore be concluded to be minimal in our system.

Fabrication details. The microresonators are made of a 440 nm thick stoichiometric Si_3N_4 grown via low pressure chemical vapor deposition with a 7:1 ammonia/dichlorosilane gas ratio, on top of thermal SiO_2 . The layout presented in Fig. 6 is patterned using electron-beam lithography. The ring and waveguide are then etched using a reactive ion etching method. The facets are clad with SiO_2 while the rings are still air-clad thanks to a lift-off process of the SiO_2 . The chips are then diced and polished for testing.

Data availability

The data that supports the plots within this paper and other findings of this study are available from the corresponding authors upon reasonable request.

Code availability

The LLE code to study the microcomb dynamics is a modified version of *pyLLE*⁵⁸ which can be made available upon reasonable request.

Received: 25 October 2022; Accepted: 24 May 2023;

Published online: 19 June 2023

References

- Stern, B., Ji, X., Okawachi, Y., Gaeta, A. L. & Lipson, M. Battery-operated integrated frequency comb generator. *Nature* **562**, 401–405 (2018).
- Spencer, D. T. et al. An optical-frequency synthesizer using integrated photonics. *Nature* **557**, 81–85 (2018).
- Li, Q. et al. Stably accessing octave-spanning microresonator frequency combs in the soliton regime. *Optica* **4**, 193 (2017).
- Pfeiffer, M. H. P. et al. Octave-spanning dissipative Kerr soliton frequency combs in Si_3N_4 microresonators. *Optica* **4**, 684–691 (2017).
- Brasch, V. et al. Photonic chip-based optical frequency comb using soliton Cherenkov radiation. *Science* **351**, 357–360 (2016).
- Nazemosadat, E. et al. Switching dynamics of dark-pulse Kerr frequency comb states in optical microresonators. *Phys. Rev. A* **103**, 013513 (2021).
- Ye, Z. et al. Integrated, ultra-compact high-Q silicon nitride microresonators for low-repetition-rate soliton microcombs. *Laser Photonics Rev.* **16**, 2100147 (2022).
- Moille, G. et al. Ultra-broadband Kerr microcomb through soliton spectral translation. *Nat. Commun.* **12**, 7275 (2021).
- Shen, B. et al. Integrated turnkey soliton microcombs. *Nature* **582**, 365–369 (2020).
- Bruch, A. W. et al. Pockels soliton microcomb. *Nat. Photonics* **15**, 21–27 (2021).
- Wang, C. et al. Monolithic lithium niobate photonic circuits for Kerr frequency comb generation and modulation. *Nat. Commun.* **10**, 978 (2019).
- Lee, S. H. et al. Towards visible soliton microcomb generation. *Nat. Commun.* **8**, 1295 (2017).
- Moille, G., Westly, D., Simelgor, G. & Srinivasan, K. Impact of the precursor gas ratio on dispersion engineering of broadband silicon nitride microresonator frequency combs. *Opt. Lett.* **46**, 5970–5973 (2021).
- Moille, G., Westly, D., Simelgor, G. & Srinivasan, K. Towards lower repetition rate and visible wavelength microresonator frequency combs for optical atomic clocks. In *CLEO 2022, SW4H.6* (San Jose, California, 2022).
- Anderson, M. H. et al. Zero dispersion Kerr solitons in optical microresonators. *Nat. Commun.* **13**, 4764 (2022).
- Anderson, M. H. et al. Photonic chip-based resonant supercontinuum via pulse-driven Kerr microresonator solitons. *Optica* **8**, 771 (2021).
- Dorche, A. E. et al. Advanced dispersion engineering of a III-nitride micro-resonator for a blue frequency comb. *Opt. Express* **28**, 30542–30554 (2020).
- Moille, G., Li, Q., Kim, S., Westly, D. & Srinivasan, K. Phased-locked two-color single soliton microcombs in dispersion-engineered Si_3N_4 resonators. *Opt. Lett.* **43**, 2772–2775 (2018).
- Kim, S. et al. Dispersion engineering and frequency comb generation in thin silicon nitride concentric microresonators. *Nat. Commun.* **8**, 372 (2017).
- Liu, J. et al. High-yield, wafer-scale fabrication of ultralow-loss, dispersion-engineered silicon nitride photonic circuits. *Nat. Commun.* **12**, 2236 (2021).
- Lu, X., Rogers, S., Jiang, W. C. & Lin, Q. Selective engineering of cavity resonance for frequency matching in optical parametric processes. *Appl. Phys. Lett.* **105**, 151104 (2014).
- Black, J. A. et al. Optical-parametric oscillation in photonic-crystal ring resonators. *Optica* **9**, 1183–1189 (2022).
- Lu, X., Chanana, A., Zhou, F., Davanco, M. & Srinivasan, K. Kerr optical parametric oscillation in a photonic crystal microring for accessing the infrared. *Opt. Lett.* **47**, 3331–3334 (2022).
- Stone, J. R. et al. Wavelength-accurate nonlinear conversion through wavenumber selectivity in photonic crystal resonators. *arXiv2212.05695* (2022).
- Yu, S.-P. et al. Spontaneous pulse formation in edgeless photonic crystal resonators. *Nat. Photonics* **15**, 461–467 (2021).
- Lu, X., McClung, A. & Srinivasan, K. High-Q slow light and its localization in a photonic crystal microring. *Nat. Photonics* **16**, 66–71 (2022).
- Lu, X., Rao, A., Moille, G., Westly, D. A. & Srinivasan, K. Universal frequency engineering tool for microcavity nonlinear optics: Multiple selective mode splitting of whispering-gallery resonances. *Photonics Res.* **8**, 1676–1686 (2020).
- Moille, G. et al. Engineering of modal coupling of counter-propagating waves for multi-color dissipative Kerr soliton operation. In *Conference on Lasers and Electro-Optics (2022), Paper STh2F.3, STh2F.3* (2022).
- Kippenberg, T. J., Gaeta, A. L., Lipson, M. & Gorodetsky, M. L. Dissipative Kerr solitons in optical microresonators. *Science* **361**, eaan8083 (2018).
- Lugiato, L. A. & Lefever, R. Spatial dissipative structures in passive optical systems. *Phys. Rev. Lett.* **58**, 2209–2211 (1987).
- Hansson, T., Modotto, D. & Wabnitz, S. Dynamics of the modulational instability in microresonator frequency combs. *Phys. Rev. A* **88**, 023819 (2013).
- Chembo, Y. K. & Menyuk, C. R. Spatiotemporal Lugiato-Lefever formalism for Kerr-comb generation in whispering-gallery-mode resonators. *Phys. Rev. A* **87**, 053852 (2013).
- Joannopoulos, J. D. (ed.) *Photonic Crystals: Molding the Flow of Light* 2nd edn, (Princeton, 2008).
- Ji, X. et al. Compact, spatial-mode-interaction-free, ultralow-loss, nonlinear photonic integrated circuits. *Commun. Phys.* **5**, 1–9 (2022).
- Lee, S.-G. & Magnusson, R. Essential differences between TE and TM band gaps in periodic films at the first Bragg condition. *Opt. Lett.* **44**, 4658 (2019).
- Lu, X. et al. Highly-twisted states of light from a high quality factor photonic crystal ring. *Nat. Commun.* **14**, 1119 (2023).
- Wang, M. et al. Fractional optical angular momentum and multi-defect-mediated mode renormalization and orientation control in photonic crystal microring resonators. *Phys. Rev. Lett.* **129**, 186101 (2022).
- Fan, Z. & Skryabin, D. V. Soliton blockade in bidirectional microresonators. *Opt. Lett.* **45**, 6446 (2020).
- Moille, G. et al. Integrated buried heaters for efficient spectral control of air-clad microresonator frequency combs. *APL Photonics* **7**, 126104 (2022).
- Rao, A. et al. Towards integrated photonic interposers for processing octave-spanning microresonator frequency combs. *Light Sci. Appl.* **10**, 109 (2021).
- Luo, R., Liang, H. & Lin, Q. Multicolor cavity soliton. *Opt. Express* **24**, 16777–16787 (2016).
- Akhmediev, N. & Karlsson, M. Cherenkov radiation emitted by solitons in optical fibers. *Phys. Rev. A* **51**, 2602–2607 (1995).
- Cherenkov, A. V., Lobanov, V. E. & Gorodetsky, M. L. Dissipative Kerr solitons and Cherenkov radiation in optical microresonators with third-order dispersion. *Phys. Rev. A* **95**, 033810 (2017).
- Eggleton, B. J., de Sterke, C. M. & Slusher, R. E. Bragg solitons in the nonlinear Schrödinger limit: experiment and theory. *JOSA B* **16**, 587–599 (1999).
- Wang, H. et al. Dirac solitons in optical microresonators. *Light Sci. Appl.* **9**, 205 (2020).
- Wang, Y. et al. Universal mechanism for the binding of temporal cavity solitons. *Optica* **4**, 855 (2017).
- Helgason, Ó. B. et al. Dissipative solitons in photonic molecules. *Nat. Photonics* **15**, 305–310 (2021).
- Tikan, A. et al. Emergent nonlinear phenomena in a driven dissipative photonic dimer. *Nat. Physics* **17**, 604–610 (2021).
- Helgason, Ó. B. et al. Power-efficient soliton microcombs. *arXiv2202.09410* (2022).
- Huang, Q., Ma, K. & He, S. Experimental demonstration of single mode-splitting in microring with Bragg Gratings. *IEEE Photonics Technol. Lett.* **27**, 1402–1405 (2015).
- de Goede, M. et al. Mode-splitting in a microring resonator for self-referenced biosensing. *Opt. Express* **29**, 346 (2021).
- Brunetti, G., Olio, F. D., Contedua, D., Armenise, M. N. & Ciminelli, C. Comprehensive mathematical modelling of ultra-high Q grating-assisted ring resonators. *J. Opt.* **22**, 035802 (2020).
- Chen, B. et al. Integrated Optical Vortex Microcomb. *arXiv2212.07641* (2022).
- Miao, P. et al. Orbital angular momentum microlaser. *Science* **353**, 464–467 (2016).
- Liu, Y. et al. Integrated vortex soliton microcombs. *arXiv2212.07639* (2022).
- Borselli, M., Johnson, T. J. & Painter, O. Beyond the Rayleigh scattering limit in high-Q silicon microdisks: theory and experiment. *Opt. Express* **13**, 1515–1530 (2005).

57. Lucas, E., Yu, S.-P., Briles, T. C., Carlson, D. R. & Papp, S. B. Tailoring microcombs with inverse-designed, meta-dispersion microresonators. *arXiv2209.10294* (2022).
58. Moille, G., Li, Q., Xiyuan, L. & Srinivasan, K. pyLLE: a fast and user friendly lugiato-lefever equation solver. *J. Res. Natl Inst. Stand. Technol.* **124**, 124012 (2019).

Acknowledgements

The authors thank Sashank Shridar and Yi Sun for their valuable input. The authors acknowledge funding from the DARPA APHI and NIST-on-a-chip programs. While preparing the manuscript, we have been made aware of ref. ⁵⁷ which has some similarities to our approach. Our work goes beyond the regime of relatively small mode splittings to theoretically and experimentally treat the ≈ 100 GHz shifts needed for broadband dispersion engineering and multi-color soliton formation

Author contributions

G.M. led the project, designed the ring resonators, conducted the experiments, and helped develop the theoretical framework. X.L. and J.S. helped with the design, D.W. fabricated the devices. G.M. and K.S. wrote the manuscript with input from all authors. All the authors contributed and discussed the content of this manuscript.

Competing interests

The authors declare no competing interests.

Additional information

Supplementary information The online version contains supplementary material available at <https://doi.org/10.1038/s42005-023-01253-6>.

Correspondence and requests for materials should be addressed to Grégory Moille.

Peer review information *Communications Physics* thanks Naoya Kuse and the other, anonymous, reviewers for their contribution to the peer review of this work. A peer review file is available.

Reprints and permission information is available at <http://www.nature.com/reprints>

Publisher's note Springer Nature remains neutral with regard to jurisdictional claims in published maps and institutional affiliations.



Open Access This article is licensed under a Creative Commons Attribution 4.0 International License, which permits use, sharing, adaptation, distribution and reproduction in any medium or format, as long as you give appropriate credit to the original author(s) and the source, provide a link to the Creative Commons license, and indicate if changes were made. The images or other third party material in this article are included in the article's Creative Commons license, unless indicated otherwise in a credit line to the material. If material is not included in the article's Creative Commons license and your intended use is not permitted by statutory regulation or exceeds the permitted use, you will need to obtain permission directly from the copyright holder. To view a copy of this license, visit <http://creativecommons.org/licenses/by/4.0/>.

© The Author(s) 2023