

PUBLISHER CORRECTION **OPEN**

Publisher Correction: Explainable artificial intelligence incorporated with domain knowledge diagnosing early gastric neoplasms under white light endoscopy

Zehua Dong, Junxiao Wang, Yanxia Li, Yunchao Deng, Wei Zhou, Xiaoquan Zeng, Dexin Gong, Jun Liu, Jie Pan, Renduo Shang, Youming Xu, Ming Xu, Lihui Zhang, Mengjiao Zhang, Xiao Tao, Yijie Zhu, Hongliu Du, Zihua Lu, Liwen Yao, Lianlian Wu and Honggang Yu

npj Digital Medicine (2023)6:109; <https://doi.org/10.1038/s41746-023-00855-2>

Correction to: *npj Digital Medicine* <https://doi.org/10.1038/s41746-023-00813-y>, published online 12 April 2023

In this article the legend for Figure legends for 1 to 4 were incorrectly matched. The figure legends should have appeared as shown below. The original article has been corrected.

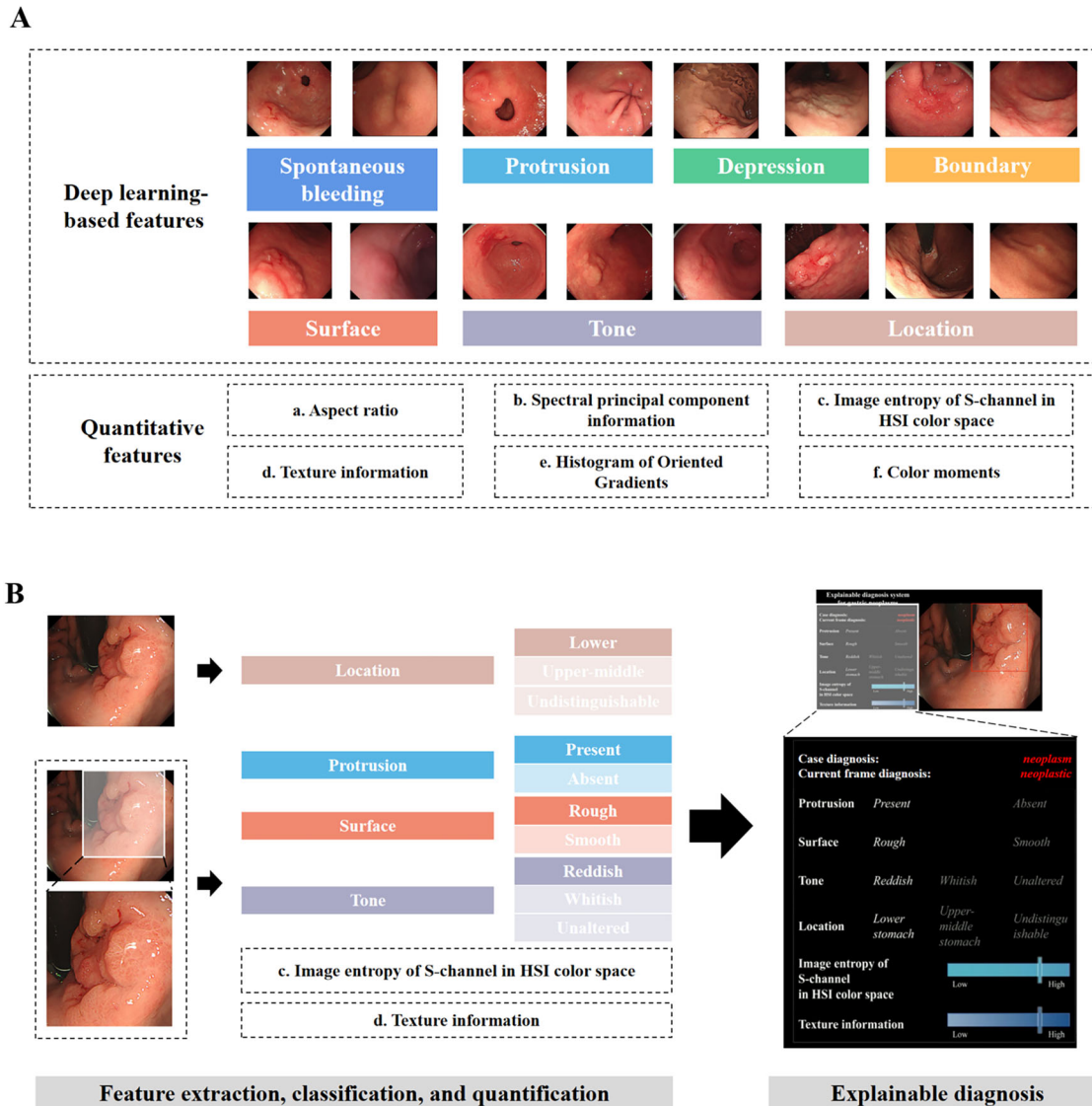


Fig. 1 The schematic diagram of all feature indexes and the framework of developing ENDOANGEL-ED. **A** Thirteen features, including seven deep learning-based features and six quantitative features. **B** The framework of developing ENDOANGEL-ED. HIS Hue, Saturation, Intensity.

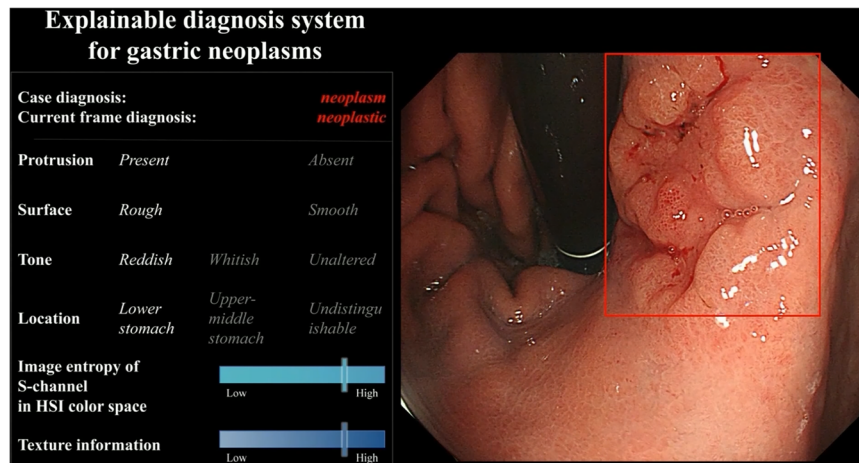


Fig. 2 The system interface of ENDOANGEL-ED. The prediction of the six feature indexes and the diagnostic result were presented on the left.

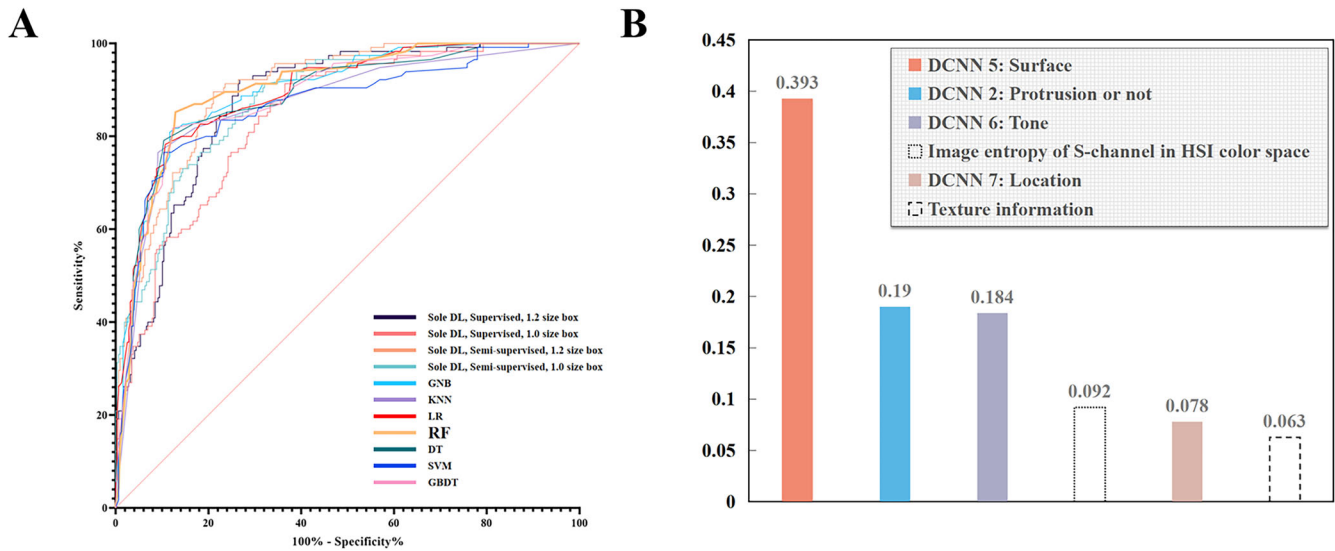


Fig. 3 The performance of machine learning (ML) models and the weights of the included feature indexes. **A** The performance of the seven ML models on the internal image test set. Random forest (RF) showed the best performance. **B** Six indexes were determined by the RF model and the corresponding weights. RF random forest, GNB Gaussian Naive Bayes, KNN k-Nearest Neighbor, LR logistic regression, DT decision tree, SVM support vector machine, GBDT gradient boosting decision tree.

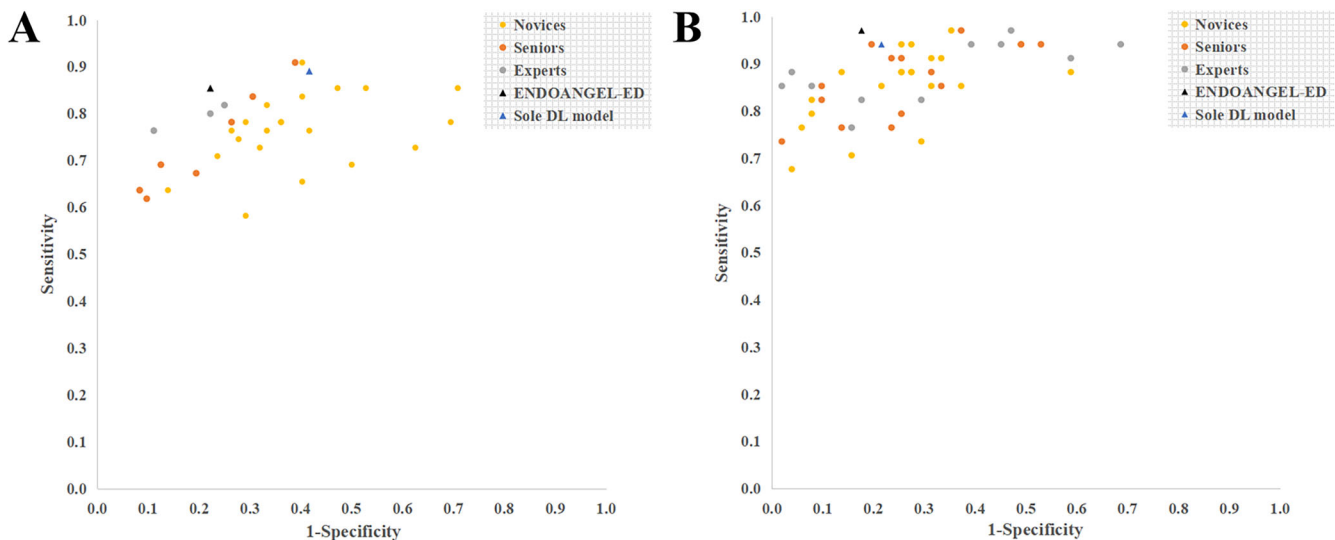


Fig. 4 Performance of ENDOANGEL-ED and endoscopists in the internal and external videos. **A** Internal videos. **B** External videos.

Open Access This article is licensed under a Creative Commons Attribution 4.0 International License, which permits use, sharing, adaptation, distribution and reproduction in any medium or format, as long as you give appropriate credit to the original author(s) and the source, provide a link to the Creative Commons license, and indicate if changes were made. The images or other third party material in this article are included in the article's Creative Commons license, unless indicated otherwise in a credit line to the material. If material is not included in the article's Creative Commons license and your intended use is not permitted by statutory regulation or exceeds the permitted use, you will need to obtain permission directly from the copyright holder. To view a copy of this license, visit <http://creativecommons.org/licenses/by/4.0/>.

© The Author(s) 2023