





AUTHOR CORRECTION OPEN



Author Correction: Circulating tumor cell heterogeneity in neuroendocrine prostate cancer by single cell copy number analysis

Vincenza Conteduca , Sheng-Yu Ku, Luisa Fernandez, Angel Dago-Rodriguez, Jerry Lee, Adam Jendrisak, Megan Slade, Cole Gilbertson, Jyothi Manohar, Michael Sigouros , Yipeng Wang, Ryan Dittamore, Rick Wenstrup, Juan Miguel Mosquera , Joseph D. Schonhoft and Himisha Beltran 

npj Precision Oncology (2021)5:84; <https://doi.org/10.1038/s41698-021-00227-7>

Correction to: *npj Precision Oncology* <https://doi.org/10.1038/s41698-021-00211-1>, published online 12 August 2021

The original version of this Article mistakenly omitted panel E in Fig. 2. This has now been corrected in the PDF and HTML versions of the Article.



Open Access This article is licensed under a Creative Commons Attribution 4.0 International License, which permits use, sharing, adaptation, distribution and reproduction in any medium or format, as long as you give appropriate credit to the original author(s) and the source, provide a link to the Creative Commons license, and indicate if changes were made. The images or other third party material in this article are included in the article's Creative Commons license, unless indicated otherwise in a credit line to the material. If material is not included in the article's Creative Commons license and your intended use is not permitted by statutory regulation or exceeds the permitted use, you will need to obtain permission directly from the copyright holder. To view a copy of this license, visit <http://creativecommons.org/licenses/by/4.0/>.

© The Author(s) 2021

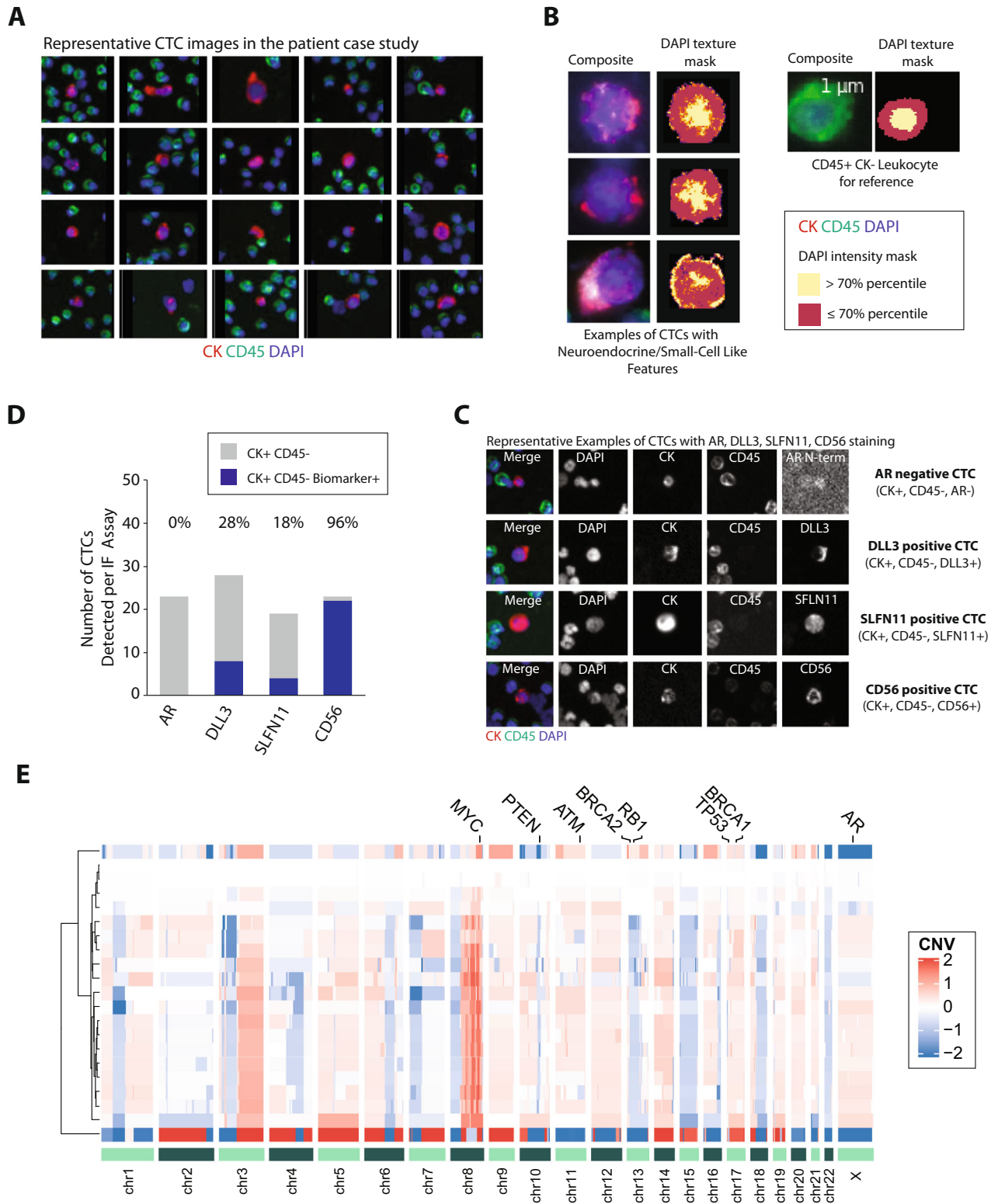


Fig. 2.