

**AUTHOR CORRECTION** OPEN



# Author Correction: A possible relation between Arctic sea ice and late season Indian Summer Monsoon Rainfall extremes

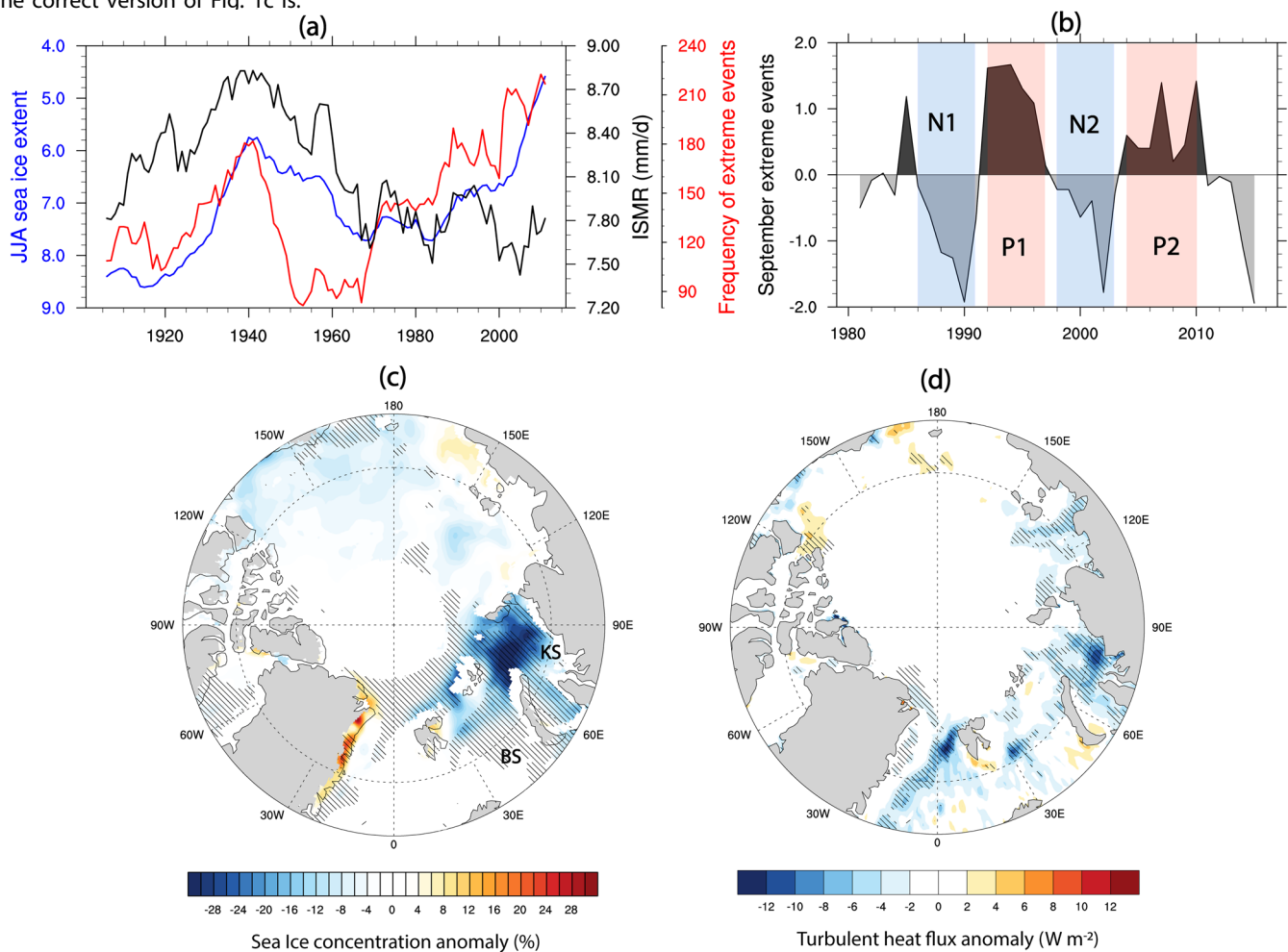
Sourav Chatterjee , Muthalagu Ravichandran , Nuncio Murukesh, Roshin P. Raj and Ola M. Johannessen

*npj Climate and Atmospheric Science* (2022)5:35 ; <https://doi.org/10.1038/s41612-022-00257-3>

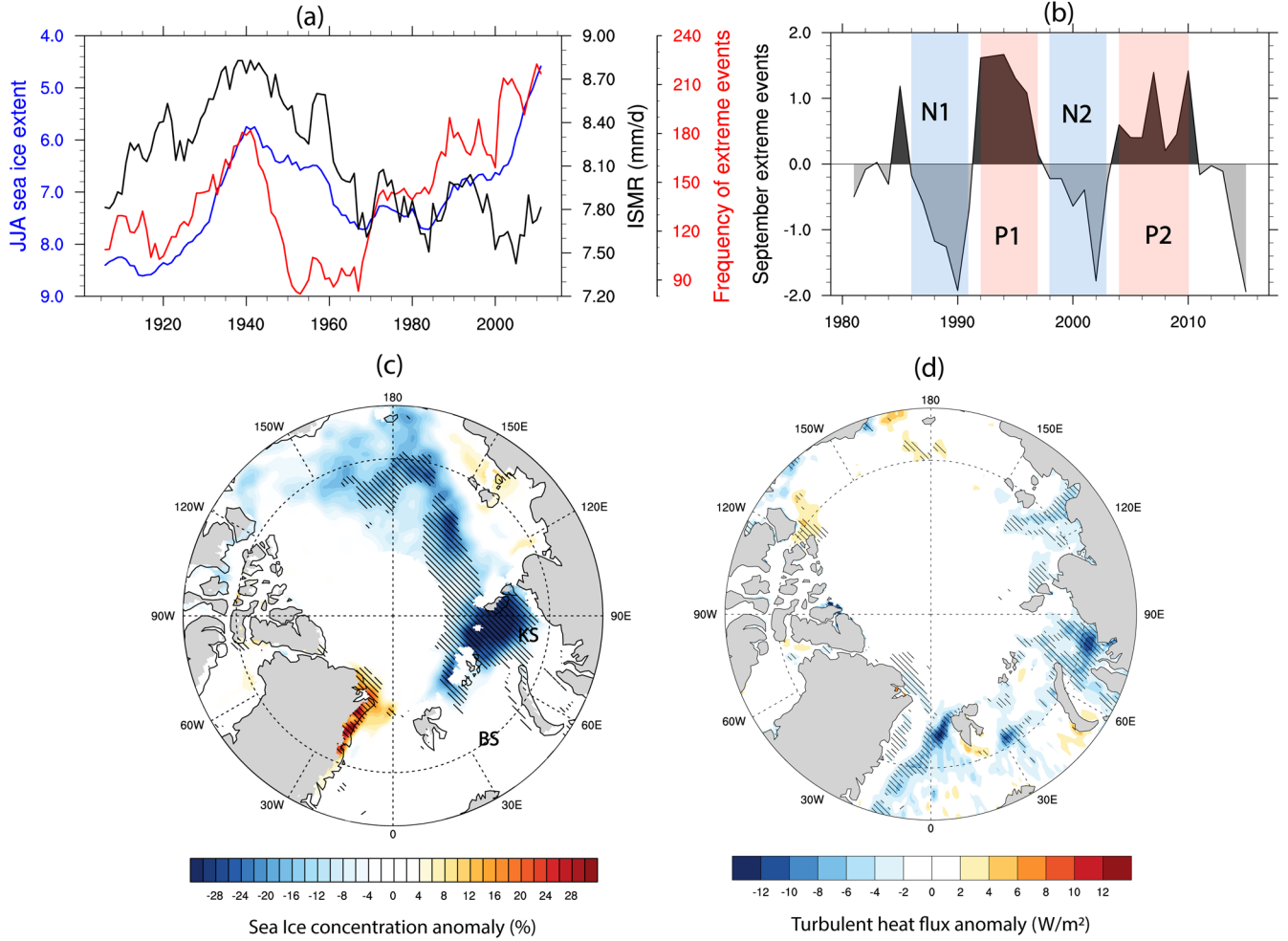
Correction to: *npj Climate and Atmospheric Science* <https://doi.org/10.1038/s41612-021-00191-w>, published online 22 June 2021

The original version of this Article contained an error in Fig. 1c, in which the sea ice concentration anomaly map was shown for August–September instead of June–July–August.

The correct version of Fig. 1c is:



which replaces the previous incorrect version:



In association to this error, the legend to Fig. 1c inadvertently missed 'JJA' after 'anomalous' and incorrectly read as 'Averaged difference in anomalous sea ice concentration (%) between years with the increased (P1: 1992–1997 and P2: 2004–2010) and reduced (N1: 1986–1991 and N2: 1998–2003) extreme rainfall years in September'. The correct version reads as 'Averaged difference in anomalous JJA sea ice concentration (%) between years with the increased (P1: 1992–1997 and P2: 2004–2010) and reduced (N1: 1986–1991 and N2: 1998–2003) extreme rainfall years in September'.

This has been corrected in both the PDF and HTML versions of the Article.

**Open Access** This article is licensed under a Creative Commons Attribution 4.0 International License, which permits use, sharing, adaptation, distribution and reproduction in any medium or format, as long as you give appropriate credit to the original author(s) and the source, provide a link to the Creative Commons license, and indicate if changes were made. The images or other third party material in this article are included in the article's Creative Commons license, unless indicated otherwise in a credit line to the material. If material is not included in the article's Creative Commons license and your intended use is not permitted by statutory regulation or exceeds the permitted use, you will need to obtain permission directly from the copyright holder. To view a copy of this license, visit <http://creativecommons.org/licenses/by/4.0/>.

© The Author(s) 2022