



OPEN

Author Correction: *Withania somnifera* (L.) Dunal whole-plant extract demonstrates acceptable non-clinical safety in rat 28-day subacute toxicity evaluation under GLP-compliance

Acharya Balkrishna, Sandeep Sinha, Jyotish Srivastava & Anurag Varshney

Correction to: *Scientific Reports* <https://doi.org/10.1038/s41598-022-14944-x>, published online 30 June 2022

The original version of this Article contained errors. Due to errors during figure assembly, in Figure 3 the panel “Heart, 1000 mg/kg/day, Females” was partially overlapping with the panel “Heart, control, Females” and the panel “Bone Marrow, control, Females” was partially overlapping with the panel “Bone Marrow, 1000 mg/kg/day, Males”.

The original Figure 3 appears below as Figure 1.

In addition, in Figure 4 the panel “Adrenal, 1000 mg/kg/day, Females” was partially overlapping with the panel “Adrenal, control, Males”, the panel “Trachea, 1000 mg/kg/day, Females” was partially overlapping with the panel “Trachea, control, Males”, the panel “Pituitary, 1000 mg/kg/day, Females” was partially overlapping with the panel “Pituitary, control, Males”, and the panel “Thyroid, control, Females” was partially overlapping with the panel “Thyroid, control, Males”.

The original Figure 4 appears below as Figure 2.

The original Article has been corrected.

Published online: 10 May 2024

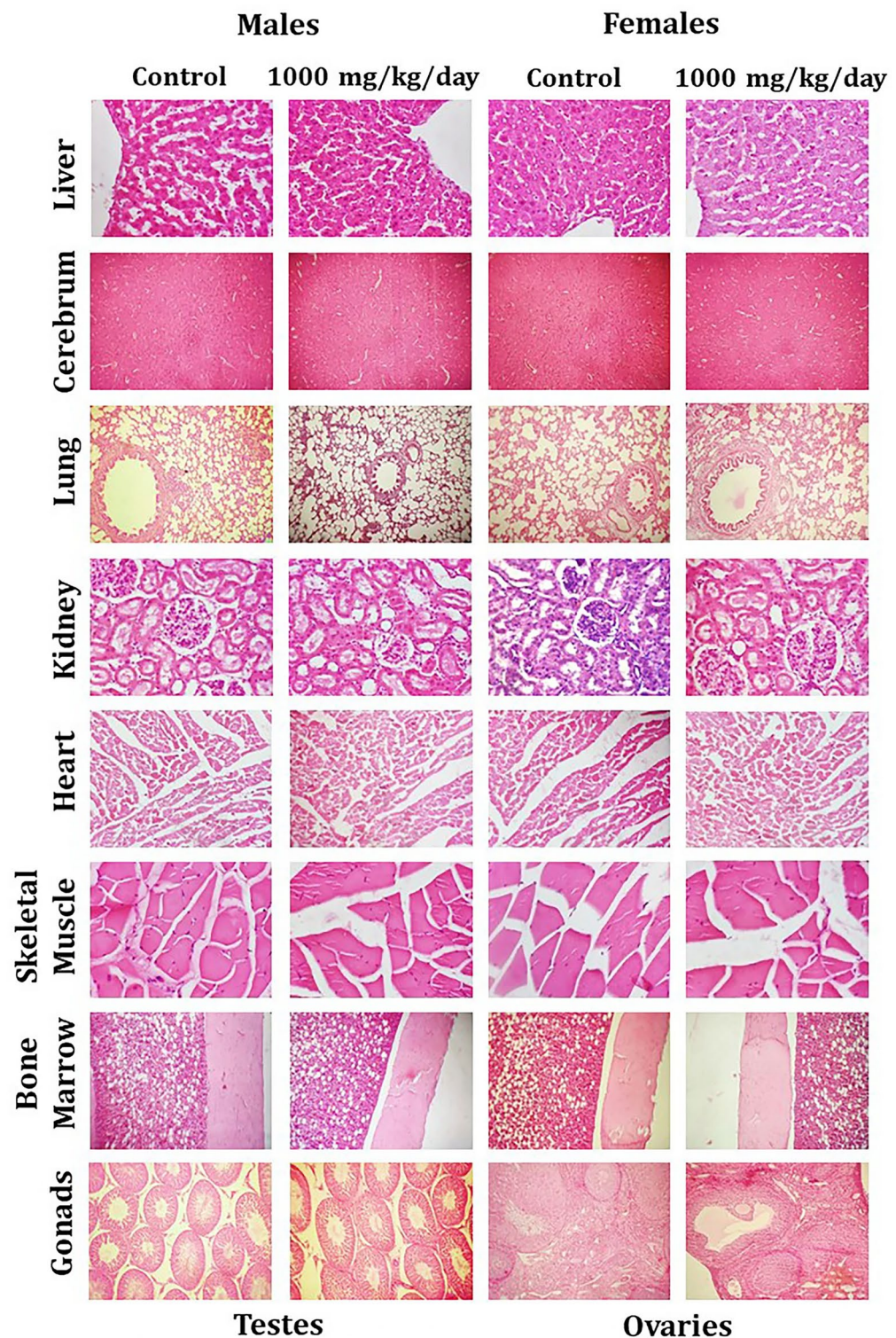


Figure 1. Representative histological photomicrographs of selected organs of rats that orally received either the vehicle (0.5% methylcellulose) or the high dose (1000 mg/kg/day) of WSWPE for a total duration of 28 consecutive days, in this non-clinical safety study. Tissue sections have been stained with Haematoxylin and Eosin. Following organs have been processed for imaging: Cerebrum, Lung, Bone Marrow ($\times 100$); Liver, Kidney, Heart, Skeletal Muscle, Testis, Ovary ($\times 400$).

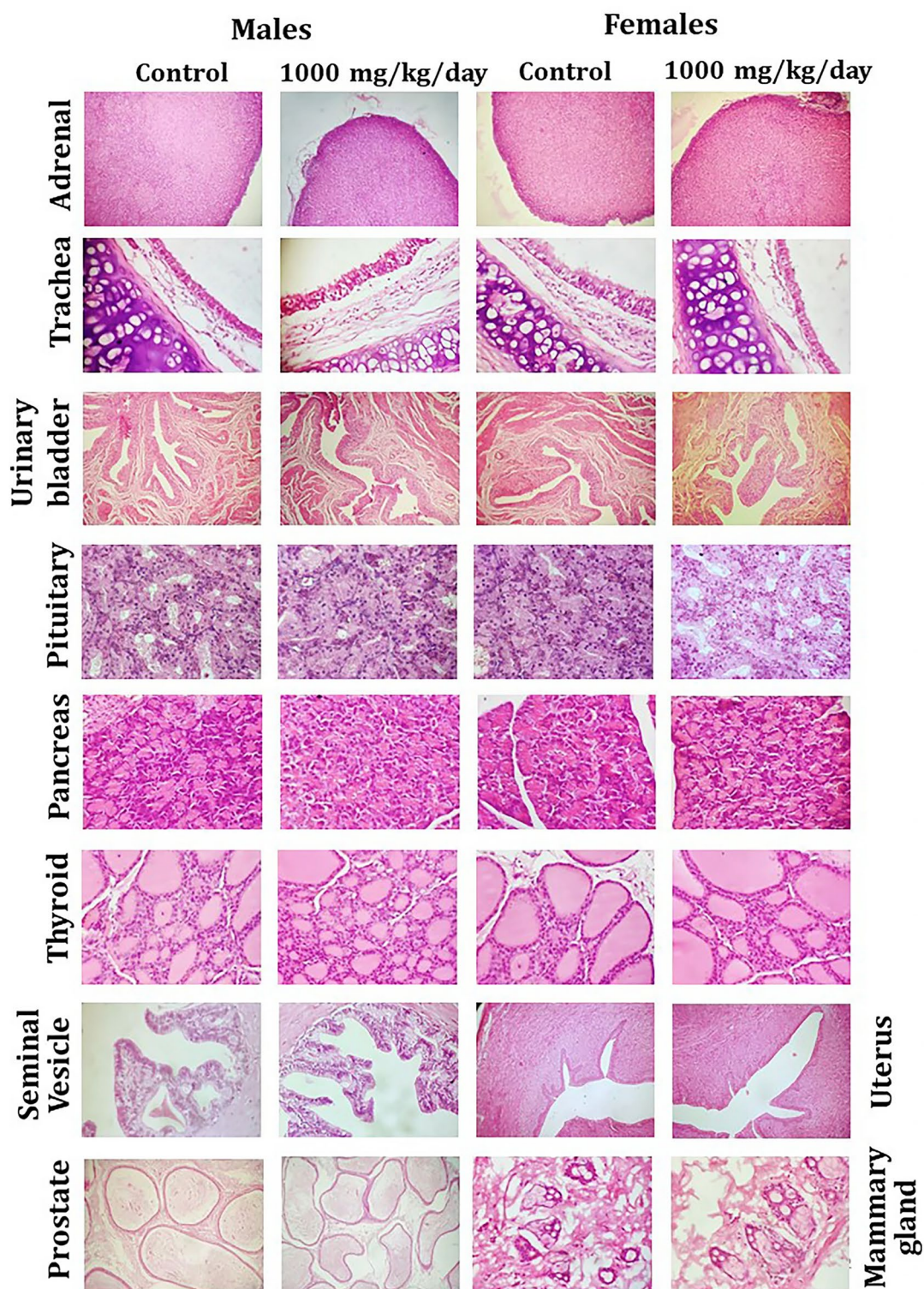


Figure 2. Representative histological photomicrographs of selected organs of rats that orally received either the vehicle (0.5% methylcellulose) or the high dose (1000 mg/kg/day) of WSWPE for a total duration of 28 consecutive days, in this non-clinical safety study. Tissue sections have been stained with Haematoxylin and Eosin. Adrenal gland ($\times 40$); Trachea, Urinary Bladder, Uterus ($\times 100$); Pituitary, Pancreas, Thyroid, Seminal Vesicle, Prostate, Mammary Gland ($\times 400$).



Open Access This article is licensed under a Creative Commons Attribution 4.0 International License, which permits use, sharing, adaptation, distribution and reproduction in any medium or format, as long as you give appropriate credit to the original author(s) and the source, provide a link to the Creative Commons licence, and indicate if changes were made. The images or other third party material in this article are included in the article's Creative Commons licence, unless indicated otherwise in a credit line to the material. If material is not included in the article's Creative Commons licence and your intended use is not permitted by statutory regulation or exceeds the permitted use, you will need to obtain permission directly from the copyright holder. To view a copy of this licence, visit <http://creativecommons.org/licenses/by/4.0/>.

© The Author(s) 2024