



OPEN

# Author Correction: Increased Ca<sup>2+</sup> transport across the mitochondria-associated membranes by Mfn2 inhibiting endoplasmic reticulum stress in ischemia/reperfusion kidney injury

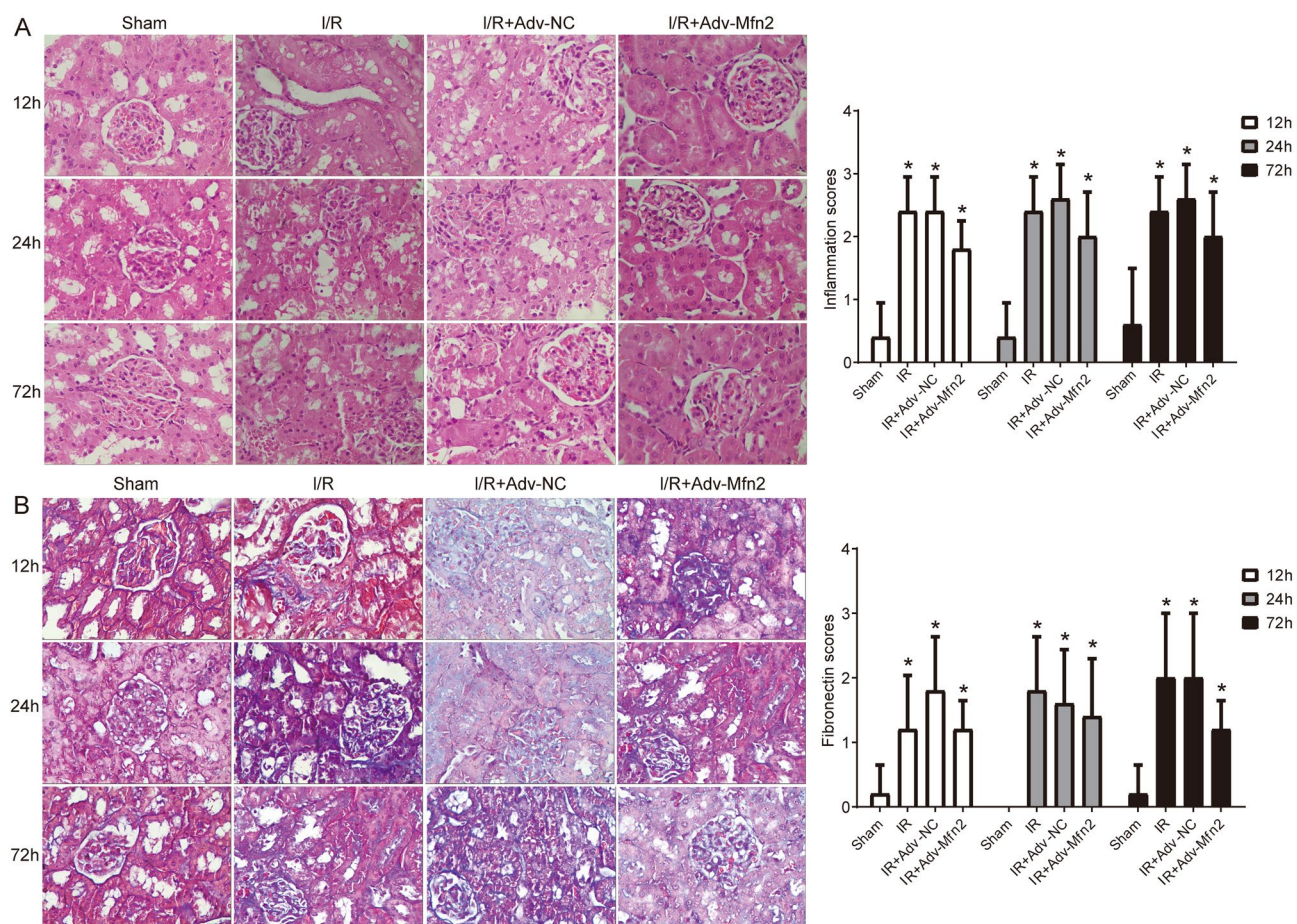
Shun Wang, Xiaohong Sang, Suhua Li, Wenjun Yang, Shihan Wang, Haixia Chen & Chen Lu

Correction to: *Scientific Reports* <https://doi.org/10.1038/s41598-023-44538-0>, published online 12 October 2023

The original version of this Article contained an error in Figure 5 where the images of the I/R group for 72 hours were incorrectly placed on the I/R + adv Mfn2 group for 24 hours. The original Figure 5 and accompanying legend appear below.

The original Article has been corrected.

Published online: 30 January 2024



**Figure 5.** HE and Masson staining of kidney tissues. **(A)** Kidney stained with HE after renal I/R injury with adv-Mfn2 or adv-NC at 12 h, 24 h, and 72 h after surgery. **(B)** Kidney stained with Masson to detect chronic renal fibrosis after renal I/R injury with adv-Mfn2 or adv-NC at 12 h, 24 h, and 72 h after surgery. Bar = 25  $\mu$ m. I/R, ischemia/reperfusion. \* $P < 0.05$  compared to Control.

**Open Access** This article is licensed under a Creative Commons Attribution 4.0 International License, which permits use, sharing, adaptation, distribution and reproduction in any medium or format, as long as you give appropriate credit to the original author(s) and the source, provide a link to the Creative Commons licence, and indicate if changes were made. The images or other third party material in this article are included in the article's Creative Commons licence, unless indicated otherwise in a credit line to the material. If material is not included in the article's Creative Commons licence and your intended use is not permitted by statutory regulation or exceeds the permitted use, you will need to obtain permission directly from the copyright holder. To view a copy of this licence, visit <http://creativecommons.org/licenses/by/4.0/>.

© The Author(s) 2024