



OPEN

Algorithmic assessment of shoulder function using smartphone video capture and machine learning

David M. Darevsky^{1,2,3,4,5,6,7,8}, Daniel A. Hu^{4,6,8}, Francisco A. Gomez^{4,6}, Michael R. Davies^{4,6}, Xuhui Liu^{4,6} & Brian T. Feeley^{4,6}✉

Tears within the stabilizing muscles of the shoulder, known as the rotator cuff (RC), are the most common cause of shoulder pain—often presenting in older patients and requiring expensive advanced imaging for diagnosis. Despite the high prevalence of RC tears within the elderly population, there is no previously published work examining shoulder kinematics using markerless motion capture in the context of shoulder injury. Here we show that a simple string pulling behavior task, where subjects pull a string using hand-over-hand motions, provides a reliable readout of shoulder mobility across animals and humans. We find that both mice and humans with RC tears exhibit decreased movement amplitude, prolonged movement time, and quantitative changes in waveform shape during string pulling task performance. In rodents, we further note the degradation of low dimensional, temporally coordinated movements after injury. Furthermore, a logistic regression model built on our biomarker ensemble succeeds in classifying human patients as having a RC tear with >90% accuracy. Our results demonstrate how a combined framework bridging animal models, motion capture, convolutional neural networks, and algorithmic assessment of movement quality enables future research into the development of smartphone-based, at-home diagnostic tests for shoulder injury.

Chronic pain and musculoskeletal (MSK) injuries are the most common cause of disability in the USA¹. Prior to referring patients for either operative or non-operative interventions, patients are first triaged based on their exact MSK pathology, which not only requires an in-person physical exam but also often demands costly and resource-intensive imaging, such as an MRI scan. Unfortunately, the elderly, patients in rural communities, and groups historically underrepresented in medicine face the greatest demographic and socioeconomic barriers^{2,3} to seeking in-person care, thus accounting for significant deficits in quality-of-life⁴. These groups are therefore hindered in the diagnosis of their MSK injuries and regular follow-up to track recovery. One method to improve healthcare access within underserved communities is developing a technological framework to remotely track joint health and evaluate recovery from MSK pathology using inexpensive tools such as motion capture and algorithmic assessment of movement quality.

To develop such technology, we focused on the shoulder joint, which is one of the most commonly injured joints in the human body in part because its extensive range of motion (ROM) relies on complex muscular and soft tissue supports^{5–8}. Movement across the shoulder's ROM is accomplished through the synergistic action of two muscle groups: those that move the shoulder through its ROM and those that stabilize the shoulder joint during movement⁸. These latter muscles, collectively known as the “rotator cuff” (RC), are commonly injured resulting in >30% population prevalence of symptomatic RC pain with advancing age^{5,4,6}. RC tears progressively worsen across time, which leads to considerable physical disability and limitations in activities of daily living due to pain, range of motion loss, and deficits in neuromuscular control of the shoulder^{5,4,6}.

Animal models allow for precise control over both the temporal specificity and severity of rotator cuff injury thus allowing for standardized assay development prior to translational validation on human patients. Thus, we used a mouse model of RC injury known to recapitulate the histopathological features of chronic human RC tears^{9,10} to develop a machine learning-driven pipeline for quantifying motion quality as it relates to shoulder

¹Bioengineering Graduate Program, University of California San Francisco, San Francisco, CA, USA. ²Bioengineering Graduate Program, University of California Berkeley, Berkeley, CA, USA. ³Medical Scientist Training Program, University of California San Francisco, San Francisco, CA, USA. ⁴Department of Orthopaedic Surgery, University of California San Francisco, San Francisco, USA. ⁵Department of Neurology, University of California San Francisco, San Francisco, CA, USA. ⁶San Francisco Veterans Affairs Health Care System, San Francisco, USA. ⁷Neurology and Rehabilitation Service, San Francisco Veterans Affairs Medical Center, San Francisco, CA, USA. ⁸These authors contributed equally: David M. Darevsky and Daniel A. Hu. ✉email: brian.feeley@ucsf.edu

function. In contrast to other preclinical studies of rodent shoulder kinematics, which rely on quadruped gait analysis that is not translatable to bipedal humans, we introduced a novel preclinical model of shoulder function that builds upon the string pulling behavior task—a bimanual, oscillatory forelimb movement (Fig. 1) where mice rope-in a string like a sailor pulling cables on a sail ship¹¹. Critically, string pulling task performance is conserved across the animal kingdom thus raising the intriguing possibility of applying our algorithmic pipeline for assessing shoulder health in rodents directly to humans¹².

Previous methods for automated assessment of shoulder function in humans relied on expensive marker- or sensor-based techniques^{13–18}. Moreover, prior work on using either motion capture or smartphones to assess the shoulder has focused on comparing range-of-motion measurements calculated by those tools versus a conventional goniometer^{19–26}. Instead, we capitalized on recent advances in markerless motion capture using machine learning to dynamically calculate multi-dimensional biomarkers of shoulder health during naturalistic arm movements²⁷. We first developed our video-based biomarkers of shoulder function using a rodent model for RC tears and then validated concordance of our pre-clinical biomarkers in human patients with rotator cuff pathology previously diagnosed using MRI scans. Here we found a striking cross-species concordance in biomarkers associated with RC injury. These results provide preliminary validation of our methodology for assessing movement quality using an inexpensive assay (see Supp. Table 1 for list of material costs). In the future, our technology may be used as a tool to track recovery of kinematics after shoulder injury or surgery, and, following rigorous comparison with current diagnostic techniques, as a screening test for shoulder pathology.

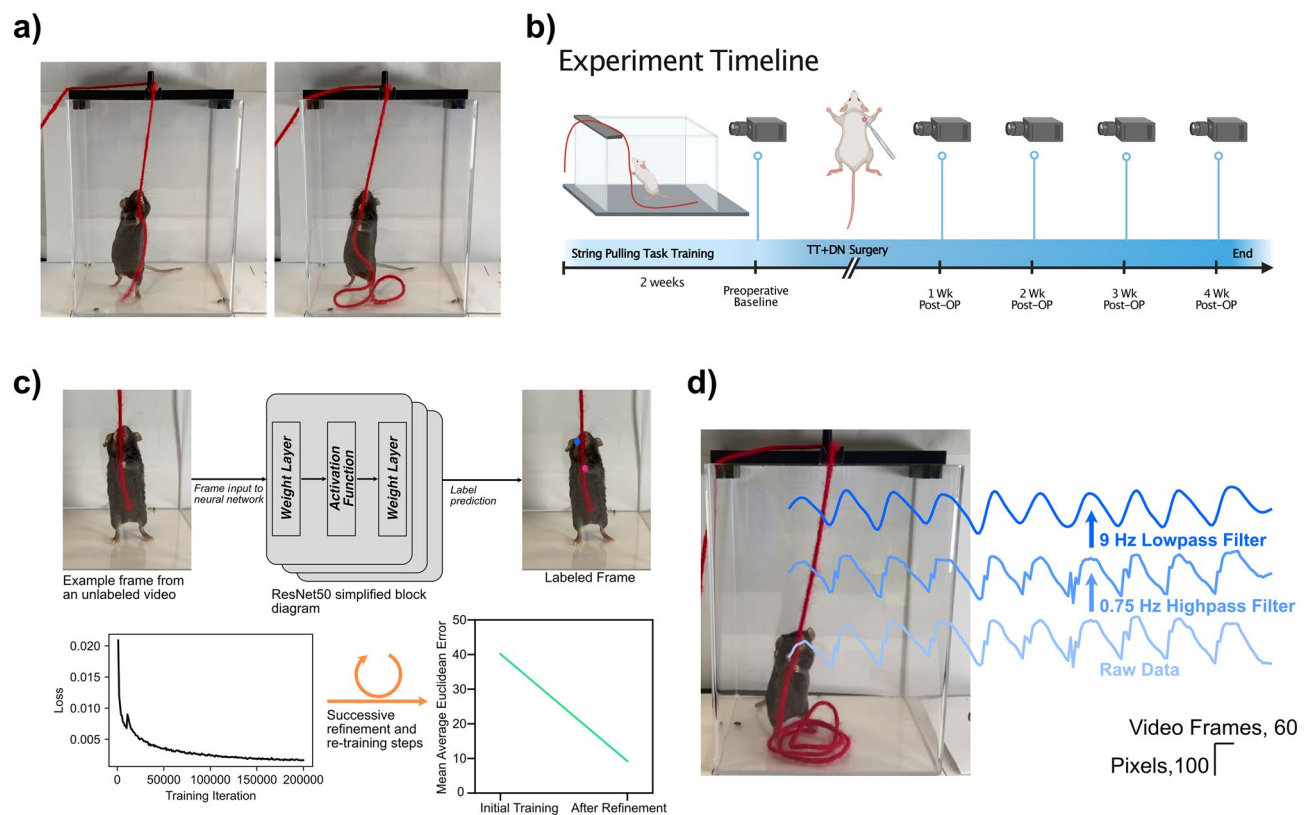


Figure 1. Overview of string pulling behavior and video pre-processing. **(a)** String pulling behavior. Mice pull on a piece of string, held in a reproducible location across trials with a 3D printed string holder, using hand-over-hand motions similar to a sailor pulling cables on a sail ship. **(b)** Experiment timeline. Mice ($n = 12$) were pre-trained three times per week for two weeks on the task before a preinjury video recording was completed. Mice were then given a rotator cuff injury via surgical transection of the supraspinatus and infraspinatus tendons along with transection suprascapular nerve. Half the mice received immediate repair of the injured tendons while the other half received no repair. Mice were allowed to recover for one week prior to the commencement of weekly recordings. **(c)** *Top row*: schematic showing labeling of video frames using a pretrained ResNet50 deep convolutional neural network. *Bottom row, left*: Example decay in root mean square error loss across neural network training. *Bottom row, right*: After two refinement steps, average Euclidean error on a held out test set drops from 40.16 to 9.21 pixels. **(d)** Kinematic trajectory filtering. Example of worst case scenario jitter in trajectory labels (data shown for right hand in the Y (vertical)-axis). Highpass followed by lowpass Butterworth filtering eliminates low frequency drift and high frequency jitter in trajectory labeling, respectively.

Results

Behavioral apparatus and data collection methodology

To standardize recordings of string pulling behavior in mice, a 3D printed string holder was placed over the behavior box to maintain a consistent position of the string across animals and behavioral trials (Fig. 1a). The position of the video camera relative to the behavior box was also standardized across recordings by using an alignment jig, and all videos were recorded at 59.64 frames per second (FPS).

Mice were first acclimated to a plexiglass behavior box for two days prior to the start of string pulling training. Following acclimation, mice ($n = 12$) received two weeks of string pulling training conducted three times per week (Fig. 1b). A Cheerio attached to the end of the string served as a reward for trials in which the mouse pulled the string all the way into the behavior box. The initial training period was followed by a preoperative baseline behavioral recording where each mouse was recorded pulling a 0.75 m long string for a total of two trials (~20 to 30 s of data per animal; see Supplementary Movie 1 for representative baseline string pulling behavior). Animals then underwent surgery with combined supraspinatus (SS)/infraspinatus (IS) tendon transection and denervation of the right shoulder; half of the animals ($n = 6$ mice) received immediate repair of the SS/IS tendons^{9,10}. After animals recovered for one week, string pulling behavior was recorded for an additional four weeks. During each behavior session, we recorded three videos of each mouse performing a discrete bout of string pulling; these technical replicates were collected in order to minimize potential bias in the results due to mice approaching the string at different angles.

After completion of data collection, we used DeepLabCut, a package for training deep convolutional neural networks for automated image segmentation²⁷, to extract locations and labels of the right and left hands (Fig. 1c, top). In brief, 50 video frames were extracted from each recorded video and labeled by manual curation. These videos were then used for supervised transfer learning of a ResNet50 deep convolutional neural network (CNN) that was pre-trained on ImageNet (Fig. 1c, middle top). Feed forward inference was then performed on all video frames in the dataset to automatically label the right and left hands (Fig. 1c, right top). After an initial round of CNN training and inference, we extracted frames where the labels for at least one of the hands jumped by a Euclidean distance of 20 or more pixels. These frames were relabeled and the CNN retrained; this refinement step reduced the mean Euclidean error in label prediction from 40.16 to 9.21 pixels on a randomly selected 5% set of held-out test images (Fig. 1c, bottom). On rare occasions, a mouse's hands would be occluded by the string causing brief oscillations in the labeling (see Fig. 1d, "Raw Data" trace for a worst-case scenario example). We thus filtered the hand trajectories first with a 0.75 Hz 1st-order Butterworth high pass filter (to remove any contributions from low frequency postural changes), followed by 9 Hz 3rd-order Butterworth low pass filter (to remove any oscillations in hand labeling secondary to hand occlusion). Filter frequencies and orders were selected to minimize distortion of the kinematic trajectory.

Post-processing of string pulling trajectories

Figure 2a demonstrates the overlay of 10 cycles of string pulling behavior for an example mouse prior to injury (right arm in blue, left arm in red). We found that the oscillatory nature of the behavior resulted in movement trajectories that occurred predominately in the vertical Y-axis. Temporally unrolling the Y-axis trace revealed that reach epochs evolved faster than pull epochs as the latter required mice to apply downward force as they advance the string (Fig. 2b, every other reach/pull epoch labeled for visualization purposes only). For each reach and pull epoch, we calculated its duration (in number of video frames divided by frame rate) and amplitude (measured in number of pixels). At baseline, Pearson correlations of the filtered kinematics traces for the right versus left hand in the X and Y axes revealed a high correlation in side-to-side (X-axis) movements of the arms (Median $r = 0.7660$, $Q1 = 0.6245$, $Q3 = 0.8239$, $IQR = 0.1994$) while movements in the Y-axis (Median $r = 0.0496$, $Q1 = -0.1381$, $Q3 = 0.4331$, $IQR = 0.5712$) were uncorrelated, which is expected given that the arms oscillate out of phase as mice alternate reach and pull epochs to advance the string (Fig. 2c). After iatrogenic injury to the SS/IS tendons, we observed qualitative changes to the shape of the Y-axis string pulling waveform including decreased velocity of pulls as well as "rounding" of the waveform peak at each reach-to-pull transition (Fig. 2d, same mouse as in Fig. 2a). In order to quantify the coordination across the reach-to-pull transition, we calculated the full-width at half maximum (FWHM) of each peak in the waveform (Fig. 2e, example FWHM calculation, *black lines*, shown in the top trace). We also calculated the velocity and acceleration of the arms by taking the first and second derivatives of the Y-axis kinematic trace data, respectively (Fig. 2e, example instantaneous velocity, *green lines*, shown in bottom trace).

Rotator cuff injury impairs movement coordination and dynamic range

We initially were interested in determining if immediate repair of the rotator cuff after iatrogenic injury would accelerate healing. Analyzing the FWHM measure (Fig. 2f) for the right hand (light blue background) and the left hand (light red background) revealed no statistically significant differences in waveform shape for animals with and without immediate rotator cuff. We thus collapsed the repair and no-repair groups together for all further analysis. Examining the FWHM between the Baseline and Week 1–4 recordings reveals a striking post-injury rightward shift in the values suggesting that animals progress slower across the reach-to-pull transition (Fig. 3a). In contrast to changes in FWHM, the distribution of the velocity values for the injured arm exhibited a smaller relative change in mean (Fig. 3b). Specifically, we observed reduced probability density over negative velocity values, which is consistent with qualitative observations of reduced slope over the pull epoch (Fig. 2d) and suggests that the pull phase is especially affected by decreased slope magnitude. Despite this shift in density, a two-way ANOVA reveals no change in the central tendency of the mean for velocity based on injury, time, or the interaction between both. However, a Levene's test for equality of variance found statistically significant differences in the variance of the velocity distribution when comparing the uninjured and injured arms at each

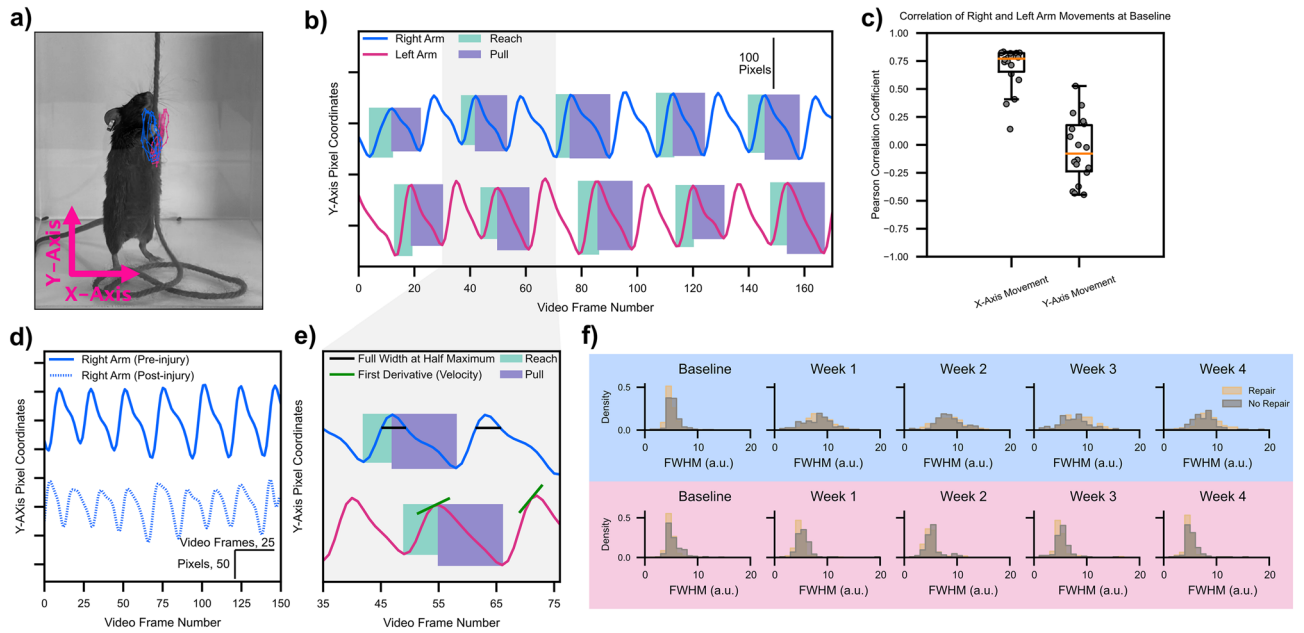


Figure 2. Post-processing kinematic trajectories to extract biomarkers of shoulder function. **(a)** Representative mouse with 10 cycles of string pulling overlaid. Right arm in blue, left arm in red. Raw kinematic trajectories with no filtering shown in this example. **(b)** Same data as in **(a)** but unrolled across time for the Y-axis. Green boxes represent reach epochs, purple boxes represent pull epochs. Every other epoch labeled for clarity. Amplitude and time are extracted for each reach and pull epoch. Data is highpass and lowpass filtered in **(b)** and all further plots. **(c)** Pearson correlation coefficients for X/Y-axis traces, right and left arms pooled. Points represent individual videos from each animal. **(d)** Same mouse as in **(a)**. Pre-injury Y-axis kinematic trajectory shown as a solid line, post injury trajectory shown as a dashed line. **(e)** Expansion of frames 35–75 in **(b)** showing calculation of full width at half maximum (black lines) and velocity (first derivative, green lines). **(f)** No difference was noted in quantitative analyses of waveform shape across mice with rotator cuff repair or no repair. Thus mice from both groups were pooled for all further analyses. All statistics are given in Supplementary Table 2.

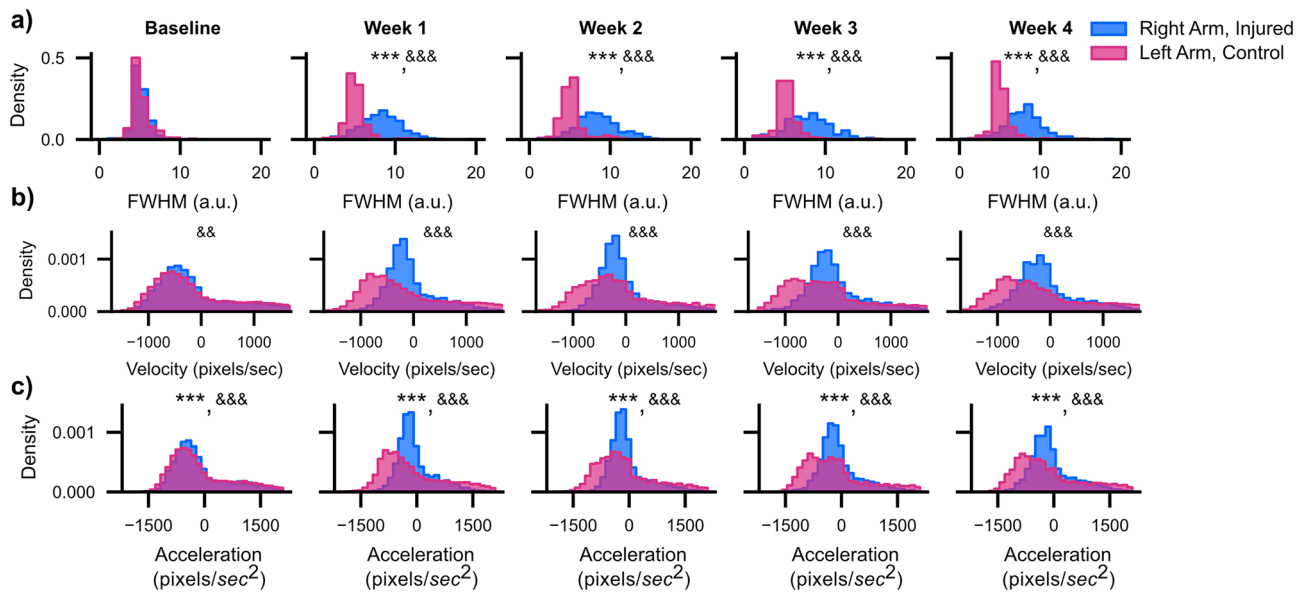


Figure 3. Quantitative measures of waveform shape do not recover after injury. **(a)** Histogram of FWHM values for the right (injured) and left (control) arms across all mice and all waveform peaks ($n = 12$ mice). **(b, c)** Same as **(a)** only for velocity and acceleration. $* < 0.05$; $** < 0.01$; $*** < 0.001$, two-way ANOVA, Tukey multiple comparison corrected post-hocs. $\& < 0.05$; $\&\& < 0.01$; $\&\&\& < 0.001$, Levene's Test for equality of variance. All statistics are given in Supplementary Table 2.

weekly time point after baseline. Similar to velocity, we noticed a drop in the density of negative acceleration values (Fig. 3c). This finding again suggests that, after undergoing rotator cuff injury, mice were unable to generate rapid arm motions, especially in the downward direction. However, in contrast to velocity, where there was no change in central tendency of the mean, acceleration exhibited a significant change in mean value across the experiment with both a main effect of arm (injured versus control) as well as time. Moreover, a Levene's test for equality of variance found statistically significant differences in the variance of the acceleration distribution when comparing the uninjured and injured arms at each weekly time point. We also found that neither FWHM, velocity, or acceleration recovered across the four post-operative weeks, suggesting lasting deficits in end-effector control secondary to rotator cuff injury.

Kinematic synergies are disrupted by injury and gradually recover across time

Previous work has found that movements of high-dimensional effectors performing everyday tasks can be expressed using a weighted combination of a few kinematic postures^{28,29}, or “movement synergies.” Synergies may reflect an innate adaptation of the central nervous system used to simplify coordination of movement across joints with high degrees of freedom^{28,30}. Here we used principal component analysis (PCA, implemented using singular value decomposition) to identify covariation patterns in the X-/Y-axis movement traces of the right and left arms into kinematic synergies that are expressed as low dimensional principal components.

After running the PCA algorithm on the X-/Y-axis movement traces of the right and left arms from each video, we next analyzed the cumulative variance explained by PCs 1 through 4. Here, we found that the cumulative variance explained by PCs 1 and 2 across all time points accounted for about 90% of the variability in the data (Supp. Fig. 1). Thus, we chose to focus our analyses only on the first two PCs. In general, the higher the variance explained by a smaller number of PCs, the lower dimensional the movement synergy (and the more temporally coordinated the movement across time). In Fig. 4a, we show the variance explained by PC1 and PC2 individually. After RC injury, the variance explained by PC1 decreased from its peak at baseline before increasing again at four weeks recovery (Variance explained by PC1, Mean \pm SEM, $n = 12$ mice: Baseline 0.707 ± 0.007 , Week 1 0.624 ± 0.019 , Week 2 0.616 ± 0.029 , Week 3 0.600 ± 0.015 , Week 4 0.645 ± 0.021). Meanwhile, the variance explained by PC2 increased from its minimum value at baseline (variance explained by PC2, Mean \pm SEM, $n = 12$ mice: Baseline 0.229 ± 0.007 , Week 1 0.289 ± 0.017 , Week 2 0.265 ± 0.017 , Week 3 0.310 ± 0.011 , Week 4 0.267 ± 0.018). There was a statistically significant main effect of time on variance explained by PC1 for Baseline versus all weeks, except Week 4. For PC2, there was a statistically significant difference between the variance explained by PC2 for Baseline versus Weeks 1 and 3 but not for Weeks 2 or 4.

While quantifying the percent variance explained by the first two PCs provides insight into the dimensionality of the kinematic synergy governing movements of the right and left arms, it does not provide insight into how the right and left hands are individually contributing to the synergy. By examining the eigenvectors of the PCA decomposition, we can gain insight into the magnitude and direction with which each of the four kinematic variables (Right arm X-axis (R_X), Right arm Y-axis (R_Y), Left arm X-axis (L_X), and Left arm Y-axis (L_Y) trajectories) contribute to each PC. The inset plot in Fig. 4b shows a stem plot of the eigenvector weights for PC1 for a representative animal at baseline (see Supp. Fig. 2 for plots of absolute eigenvector weights for all four PCs). Here, we found that at baseline movements of the right and left arms in the Y-axis were similar in magnitude but opposite in sign—as expected given that the arms oscillate out of phase during the string pulling behavioral cycle. Since the sign of an eigenvector is relative, we took the absolute value of the eigenvector weights for R_Y and L_Y to compare changes in weights across time (Fig. 4b). At Baseline, both R_Y and L_Y had similar magnitudes before diverging on Weeks 1–3. This divergence was followed by a convergence of weights on Week 4. Together, these results suggest that after injury the uninjured hand contributes more strongly towards coordinated activity within PC1 as compared to the injured arm; recovery of eigenvector weights on Week 4 further suggests that PCA may be useful in identifying reestablishment of coordinate kinematics during recovery.

In our PCA analysis we have thus far focused on analyzing variance explained and eigenvector weights, which provide insight into the dimensionality of movement coordination as well as the contribution of individual variables to each dimension, respectively. However, neither of these metrics provide temporal information as to patterning of principal component activation. To understand the temporal evolution of each principal component across each video recording, we analyzed the right singular vectors generated as part of the PCA algorithm (Fig. 4c, time series of PC1-4 activation for a representative mouse). In a representative example at baseline, we noticed clear 2–4 Hz coupling between the right singular vectors of PC1 and PC2 (Fig. 4c, *top* and *second from the top* traces)—in other words, for every one oscillatory cycle of PC1, PC2 exhibits two-to-four oscillatory cycles. Thus, to quantify the relationship between the right singular vectors of PCs 1 and 2, we performed a bispectral coherence analysis³¹. Bispectral coherence quantifies cross-frequency coupling between two time series; we found strong coupling between PCs 1 and 2 during the pre-injury baseline (Fig. 4d, mean bispectral coherence values shown across $n = 12$ animals). Following injury, the crisp cross-frequency coupling seen during the Baseline recordings degraded between PC1 and PC2 during post-injury weeks 1 and 2 (Fig. 4d, *Week 1* and *Week 2* heatmaps) only to reemerge during post-injury weeks 3 and 4 (Fig. 4d, *Week 3* and *Week 4* heatmaps). To better quantify change in bispectral coherence, we measured the maximal bispectral coherence values in the 2–4 Hz range for each animal and for each video during the recording timeline. Here we found a clear decrease in maximal bispectral coherence values for Week 2. However, a one-way ANOVA with a main effect of time found only a trend towards statistical significance. Together, these results show that injury results in only transient temporal decoupling between PCs 1 and 2, which perhaps suggest rapid central or peripheral adaptation of end effector control to reengage movement synchrony over recovery.

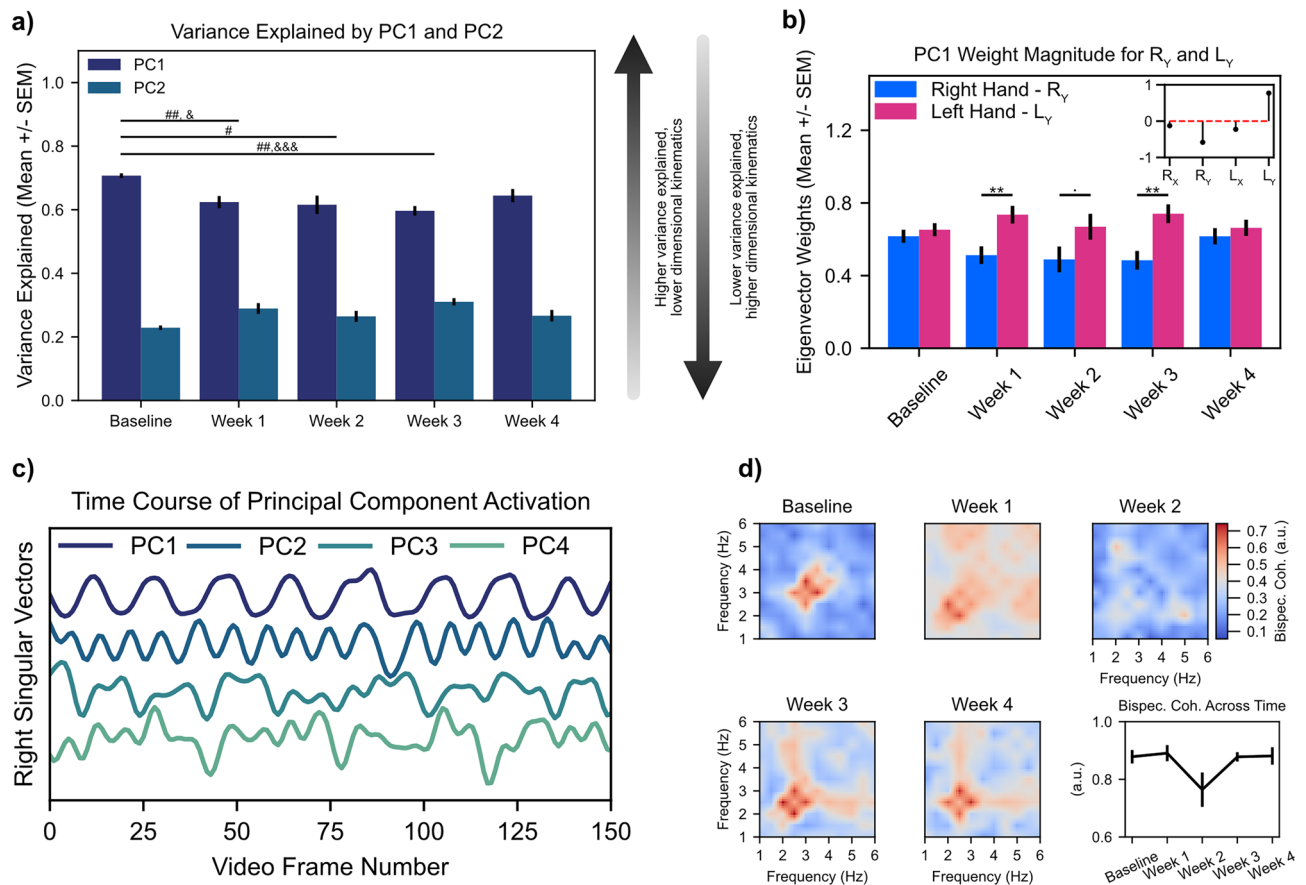


Figure 4. Changes in kinematic synergies track shoulder injury and recovery. (a) Quantification of variance explained by the first two PCs. $\# < 0.05$; $\#\# < 0.01$; $\#\#\# < 0.001$, Tukey multiple comparison corrected post-hocs comparing PC1 variance explained relative to Baseline. $\& < 0.05$; $\&\& < 0.01$; $\&\&\& < 0.001$, Tukey multiple comparison corrected post-hocs comparing PC2 variance explained relative to Baseline. (b) Quantification of the absolute magnitude of Y-axis Eigenvector weights for right hand (injured) and left hand (uninjured). Inset stem plot shows Eigenvector weights for the video recording from the example mouse in Fig. 2a. < 0.1 ; $* < 0.05$; $** < 0.01$, Tukey multiple comparison corrected post-hocs comparing injured versus uninjured arms. (c) Representative plot of right singular vectors from a singular value decomposition (i.e., principal component analysis, PCA) of X and Y kinematic trajectories of the right and left arms for same mouse as shown in Fig. 2a. (d) Mean bispectral coherence cross-coupling between PC1 and PC2; note deterioration of cross-frequency coupling during post-injury weeks 1 and 2 followed by reemergence of coupling during weeks 3 and 4. All statistics are given in Supplementary Table 2.

Rotator cuff injury results in lasting compensation by the contralateral arm

Our waveform shape analysis revealed lasting deficits in the reach-to-pull transition while our kinematic synergy analysis showed that while injury caused the temporary emergence of a higher dimensional movement state space, this dimensionality reverted to baseline at the end of four week's recovery. How then can we reconcile these two competing findings? Analyzing movement amplitude (Fig. 5a) showed a striking decrease in movement amplitude of the right arm after rotator cuff injury between Baseline and Week 1. Over the ensuing three weeks of recovery (Week 2 through Week 4), movement amplitude for the right injured arm recovered back to its Baseline while movement amplitude for the left control arm exceeded that of the pre-injury baseline, suggesting that mice continue compensating with their left arms even after right arm kinematics recovers. This effect was seen symmetrically across both reaching (Fig. 5a, *solid lines*) and pulling (Fig. 5a, *dotted lines*) epochs. A three-way ANOVA with main effects of time, arm (injured versus uninjured), and movement epoch (reach versus pull) plus an interaction term of time and arm was fit to the amplitude data. We found statistically significant main effect of time plus a significant effect of the interaction between time and arm, but there was no significant main effect of arm. As expected, there was no significant effect of movement epoch. A Tukey multiple comparison corrected post-hoc analysis showed statistically significant differences in the interaction term when comparing Baseline relative to post-injury Week 1 for the injured arm, but not for Baseline versus Weeks 2–4 and for the uninjured arm for Baseline versus Weeks 3 and 4. These statistical findings further reinforce how, after just one week's recovery time, the right arm movement amplitude returns back to its pre-injury baseline while the left arm exhibits persistent compensation.

In parallel with quantifying movement amplitude, we also quantified movement time for reach and pull epochs (Fig. 5b). Here, we noticed a clear difference between movement epoch with pulls universally taking

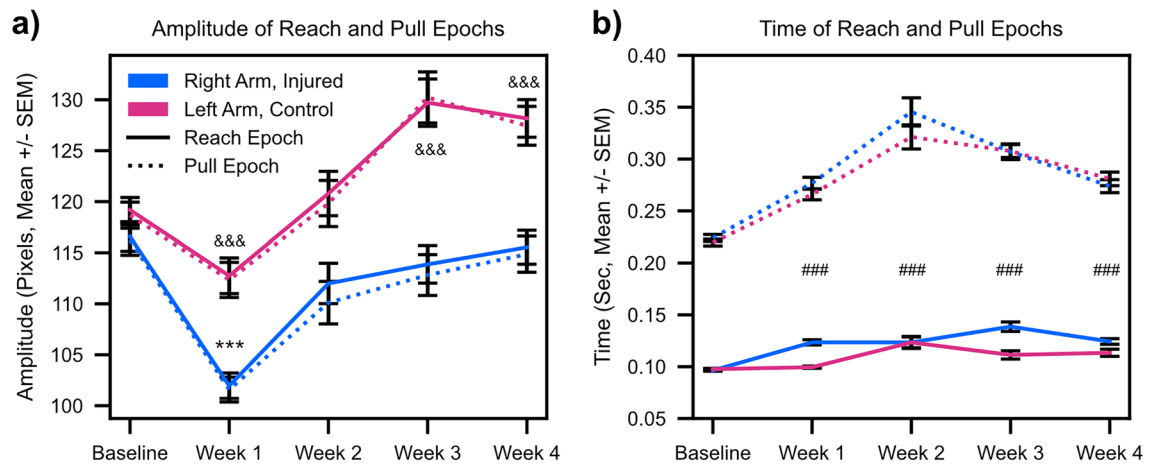


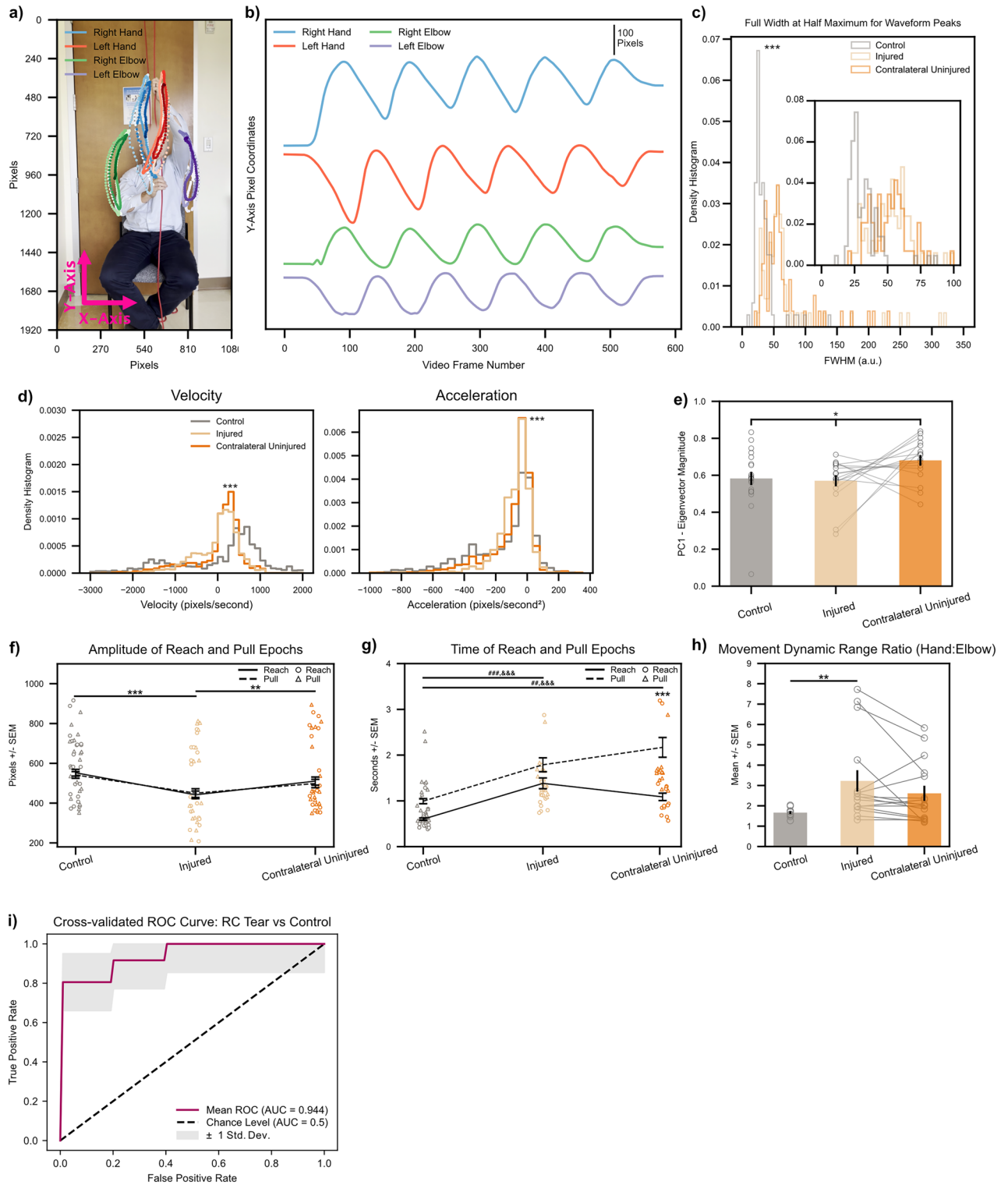
Figure 5. String pulling movement amplitude and time show evidence of compensation. **(a)** Amplitude (in pixels) of reach (solid lines) and pull (dashed lines) for right (injured) and left (control) arms. * <0.05 ; ** <0.01 ; *** <0.001 , Tukey multiple comparison corrected post-hocs comparing amplitude for injured arm versus Baseline. & <0.05 ; && <0.01 ; &&& <0.001 , Tukey multiple comparison corrected post-hocs comparing amplitude for uninjured arm versus Baseline. **(b)** same as **(a)** only for reach and pull times. # <0.05 ; ## <0.01 ; ### <0.001 , Tukey multiple comparison corrected post-hocs comparing the main effect of time for both arms relative to Baseline. All statistics are given in Supplementary Table 2.

longer than reaches (Fig. 5b, pull times shown as *dotted* lines and reach times shown as *solid* lines). At Baseline both reach and pull times are highly symmetrical. This symmetry is followed by an overall trend to longer reach times for the right arm after rotator cuff injury. Pull times also lengthen, albeit more symmetrically, for both the right and left arms before reaching a peak at Week 2 and then declining for the remaining two weeks. We hypothesize that the parallel increase in pull times is attributable to different mechanisms for the injured and uninjured arms—the former because injury slows movement and the latter because of compensation which requires the execution of higher amplitude movements. We fit a three-way ANOVA with main effects of time, arm (injured versus uninjured), and movement epoch (reach versus pull) plus an interaction term of time and arm onto the time data. We found statistically significant main effects of time and movement epoch, plus a trend towards a statistically significant effect of the interaction between time and arm. There was no significant effect of injured versus uninjured arm. Tukey multiple comparison corrected post-hoc analysis showed statistically significant differences in the main effect of time for Baseline versus Week 1–4.

Human patients with rotator cuff injuries recapitulate the kinematic phenotype seen in rodents

Having used the precise temporal control over injury afforded by a rodent model to develop a clear set of kinematic measures that differentiate injured versus uninjured shoulders, we next sought to validate our biomarkers on human patients with known RC tears ($n=6$, see Supp. Table 3 for patient demographic information) as well as healthy controls with no shoulder pathology ($n=6$). We tracked the position of both the hands and elbows for our human subjects (Fig. 6a, three cycles of string pulling in a representative control subject). Unrolling the kinematic trace in the Y (vertical)-axis across time reveals striking qualitative similarities in waveform shape across rodents (Fig. 2b) and humans (Fig. 6b, same representative control subject as in Fig. 6a with the entire video unrolled across time in the Y-axis): reaches exhibit faster rises as compared to pulls, and both arms oscillate out of phase with respect to each other.

We next proceeded to validate whether waveform shape quantitatively differs across injured versus uninjured shoulders. As in mice, we only used data for hand movements and found that patients with injured shoulders exhibited increased FWHM values of the Y-axis string pulling waveform peaks (Fig. 6c, data from control shoulders irrespective of laterality shown in grey. Data from injured shoulders shown in light gold. Inset provides zoomed view on histogram values on the interval from [0, 100]. See Supp. Fig. 4 for FWHM histograms of individual study participants). In parallel with analyzing waveform shape, we also took the first and second derivatives of the waveform trajectories to analyze velocity and acceleration, respectively (Fig. 6d). Just as in rodents, a histogram of velocity (in pixels/second) revealed an increased concentration of values around zero (Mean \pm SEM; control: 7.853 ± 28.661) for both the injured shoulder (injured: 2.207 ± 13.970) and, curiously, the contralateral uninjured shoulder (contralateral uninjured: 3.782 ± 17.398) in patients with rotator cuff tears. In fact, a one-way Kruskal–Wallis test found a statistically significant main effect of arm on velocity. A Bonferroni-corrected Mann–Whitney U test as a post-hoc analysis showed statistically significant differences in velocity between Control versus Injured, Control versus Contralateral Uninjured, and Injured versus Contralateral Uninjured. When analyzing acceleration values (in pixels/second²), we do not observe as a striking of a difference between patients and controls (Mean \pm SEM; control: -153.278 ± 6.921 , injured: -77.339 ± 2.916 , contralateral uninjured: -97.407 ± 4.463). However, a Kruskal–Wallis test still reached statistical significance. Follow-up Bonferroni-corrected Mann–Whitney U test as a post-hoc analysis showed statistically significant



differences in velocity between Control versus Injured or Contralateral Uninjured, but not for Injured versus Contralateral Uninjured.

In contrast to our findings in rodents, PCA decomposition of lowpass filtered, mean-centered X/Y position data of the hands and elbows did not reveal a statistically significant difference in dimensionality between control versus rotator cuff tear groups (Supp. Fig. 5). However, there was a trend towards statistical significance in our analysis of absolute Eigenvector magnitudes (Fig. 6e) for Y-axis movements of the hands across control shoulders (Mean ± SEM; 0.583 ± 0.036), injured shoulders (0.570 ± 0.030), and contralateral uninjured shoulders (0.681 ± 0.029).

When longitudinally testing injured mice on the string pulling task, we notice persistent compensation by the contralateral, uninjured extremity that persists even as the kinematics of the injured extremity recovers (Fig. 5a).

◀ **Figure 6.** Biomarkers calculated on string pulling kinematic traces directly translate to human subjects with shoulder injury. **(a)** Representative control subject with three cycles of string pulling superimposed. Elbows were labeled in addition to hands for the human patients given the ready visibility of human elbows. **(b)** Same subject as in **(a)**, data shown for one full trial. Note similarity of kinematic trajectories for the hands between human and rodent subjects (Fig. 2b). **(c)** FWHM measurements for control ($n = 12$) and injured shoulders ($n = 6$). Inset shows zoomed view for FWHM values between 0 to 100. $*** < 0.001$, Kolmogorov-Smirnov test. **(d)** *Left*, histogram of velocity values (calculated on the Y-axis kinematic trajectories of the hands) for control ($n = 6$), injured ($n = 6$), and contralateral uninjured ($n = 6$) shoulders. *Right*, same as *left* only for acceleration values. $*** < 0.001$, Kruskal–Wallis test. **(e)** Quantification of absolute Eigenvector weights for the first PC (data shown for Y-axis Eigenvector weights of the hands). Gray lines show change between injured and contralateral uninjured shoulders for each trial recorded per subject. $* < 0.1$, one-way ANOVA **(f, g)** Amplitude and time of reach (solid line) and pull (dashed line) epochs. Individual amplitude/time values for every cycle of string pulling shown for reaches and pulls with circles and triangles, respectively. **(h)** Ratio of standard deviation values between ipsilateral hand:elbow pairs calculated for each subject on their hand/elbow Y-axis kinematic trajectories. Gray lines show change between injured and contralateral uninjured shoulders for each trial recorded per subject. $* < 0.05$; $** < 0.01$; $*** < 0.001$, two-way ANOVAs, Tukey multiple comparison corrected post-hocs for all other statistical analyses unless stated otherwise. **(i)** Receiver operating characteristic (ROC) curve for a binary logistic regression model fitted to predict a patient as either having no RC tear or having an RC tear in one of their shoulders. *Maroon* line shows mean ROC across threefold stratified cross-validation, *gray* outline plots ± 1 Std. Dev. uncertainty in the mean ROC estimate. All statistics are given in Supplementary Table 2.

Here we analyzed the same metrics of amplitude and time for our human subjects. We found that there was no statistically significant difference in movement amplitude (Fig. 6f) for reach and pull epochs across all control, injured, and contralateral uninjured shoulders nor was there a statistically significant interaction between reach/pull epochs and arm. There was, however, a statistically significant main effect of arm on amplitude. A Tukey multiple comparison corrected post-hoc analysis showed statistically significant differences in the main effect of group for Control versus Injured or Contralateral Uninjured, but not for Control versus Contralateral Uninjured. Together, these results confirm that patients with rotator cuff injury have reduced movement amplitude of the injured extremity.

When analyzing the timing of reach and pull epochs (Fig. 6g, outlier points > 4 s removed for clarity. See Supp. Fig. 4 for plot with all data points shown), we notice that pulls (dashed line) generally take longer than reaches—a replication of the phenomenon that we see in our rodent data (Fig. 5b *dashed* lines). Mean time in seconds \pm SEM for control group (reach: 0.601 ± 0.026 , pull: 0.993 ± 0.055), injured (reach: 1.383 ± 0.118 , pull: 1.788 ± 0.152), and contralateral uninjured (reach: 1.087 ± 0.081 , pull: 2.169 ± 0.216). A two-way ANOVA revealed a statistically significant main effect of epoch as well arm; the interaction between epoch and arm was also statistically significant. Curiously, we notice that the contralateral uninjured arm pull time is greater than the contralateral uninjured arm reach time. The divergence in these two measures is striking given the downward trend in reach times for the contralateral uninjured arm versus both reach and pull times for the injured arm. While difficult to ascertain with certainty, we suspect that this may be a manifestation of compensation where, in order to advance the string by an equivalent distance during reach and pull epochs (Fig. 6f), patients are recruiting scapular or thoracic motions thus prolonging the movement cycle.

We next compared the dynamic range ratio, computed by taking the ratio of standard deviation values of the lowpass filtered, mean-centered Y-axis kinematic trajectory between ipsilateral hand:elbow pairs across all study participants (Fig. 6h). Here we were interested in determining whether rotator cuff injury predisposes patients to adopting a movement regime where the string is advanced by rotating the humerus around its longitudinal axis versus engaging the entire arm in reaching & pulling motion (see Supp. Fig. 6 for example kinematic traces of control versus RC tear subject demonstrating reduced elbow excursion). In other words, we expect the dynamic range ratio to increase for patients that predominately advance the string by moving their hands using rotational (rather than translational reaching) movements while keeping the elbow stationary. Indeed, we notice a statistically significant increase in the movement dynamic range ratio for injured shoulders. The mean dynamic range ratio \pm SEM across groups was 1.665 ± 0.069 for control extremities, 3.224 ± 0.525 for injured extremities, and 2.613 ± 0.373 for contralateral uninjured extremities.

As a final analysis, we used regularized binary logistic regression (see *Materials and Methods* for further details of model design) to build a predictive model for whether a given patient had a rotator cuff tear in at least one of their shoulders. After running stratified K-fold cross-validation, we found that using string pulling metrics as predictors resulted in an area under the curve (AUC) of 0.944 ± 0.051 (Mean \pm Std. Dev.) for our classifier. We further noted a mean sensitivity and specificity of 1.0 and 0.806 averaged across the K-fold cross validations, respectively. Even though our sample sizes are relatively small ($n = 6$ shoulders with RC tears), these results provide preliminary validation for the clinical utility of our movement assessment methodology.

Discussion

Previous animal models of rodent tendon injury and repair have invariably drawn inferences about upper or lower extremity function using quadruped gait tasks^{32–37}. While these methods have demonstrated functional differences between subtypes of RC tendon injury³³ or RC tendon repair strategies^{36,37}, no study has ever analyzed shoulder function in rodents using bimanual forelimb movements that are analogous to regular human motion patterns. The string pulling assay has multiple advantages over quadruped gait tasks: (1) it allows for the kinematic assessment of each arm independently, which allows for a within-animal control using the contralateral

extremity, (2) it includes a significant overhead motion component which is frequently impaired in patients with RC tears⁷, (3) it decouples movements of the lower extremities and the arms, and (4) it offers strong kinematic concordance between rodents and humans³⁸.

Although we observed clear differences in string pulling movement speed and amplitude between injured and uninjured extremities in both rodents and humans (Figs. 5 and 6), the oscillatory nature of the behavior allows for application of time series analysis techniques. Here we analyzed FWHM for waveform peaks of Y-axis string pulling kinematic trajectories to analyze the reach-to-pull transition as it (1) captures overhead reaching movements that require the supraspinatus muscle and (2) it highlights the transition from a concentric to an eccentric RC muscle contraction regime. Importantly, FWHM is not simply co-linear with movement duration: note both injured and uninjured arms have prolonged pull durations in Fig. 5b after injury yet the distribution of FWHM undergoes a rightward shift only for those animals with RC injury (Fig. 3a).

Prior human research suggests that the temporal evolution of complex movements across joints with high degrees of freedom (hDOF) such as the hand occurs via the coordinated activation of a low-dimensional kinematic basis set^{28,39,40}. The shoulder joint occupies a high dimensional anatomic space with 6° of freedom and 18 different muscles controlling its articulation. Intriguingly, for human string pulling behavior, only two principal components are sufficient to explain >90% of the variance in the data (see Supp. Fig. 5). This suggests that despite the requirement placed upon the body to efficiently generate a smooth, sinusoidal movement, string pulling behavior manifests itself as a predominately low-dimensional activity. In rodents, where we have ready access to longitudinal data, we notice an increase in the dimensionality of the kinematic state-space after injury which recovers back to baseline at the end of four weeks' recovery. The cross-frequency coupling between PC1 and PC2 undergoes a similar pattern. Curiously, we saw no statistically significant differences in the dimensionality of string pulling behavior in humans with or without RC tears; future work may elucidate if such changes are restricted only to cases of acute RC injury.

Limitations and future directions

While our initial validation in human patients holds promise, a number of limitations restrict the clinical utility of our findings. Firstly, it remains unknown if our methods are sufficiently sensitive to discern between a variety of shoulder pathologies such as RC tear, osteoarthritis, biceps tendinosis, or shoulder instability. Future work should focus on the analysis of string pulling kinematics across patients with different etiologies of shoulder pain. Secondly, our use of logistic regression provides a binary outcome for the presence of RC pathology. Future studies should expand this approach by also returning a continuous, or categorical, measure of injury severity (e.g., partial, complete, or massive RC tear). Lastly, transformation of our biomarkers into a patient-facing smartphone application for the diagnosis of shoulder pain will require clinical trials with much larger sample sizes, astute attention to user interface design, and careful cross-correlation of kinematic measures with physical exam findings and advanced imaging across differing diagnoses and disease severity grades. However, given the ubiquity of smartphones in modern society, we remain optimistic that our new paradigm will eventually allow patients with less access to in-person care to receive quick and affordable snapshots of their shoulder health using tools they are likely to already have at home.

Materials and methods

Animal training protocol and behavioral box apparatus

All in-vivo animal procedures and experiments were previously approved by the San Francisco Department of Veterans Affairs Institutional Animal Care and Use Committee and all experiments were performed in accordance to all the relevant guidelines and regulations. Sample size was based on previous studies and no randomization of animals (or blinding of researchers to group/animal identity) was performed. Specifics with regards to each experiment and statistical analysis are described throughout the paper in accordance to the ARRIVE guidelines (<https://arriveguidelines.org>). 12 adult male wild-type mice (C57/L6J, Jackson Laboratory inc.) were trained on a string-pulling task in an acrylic box as described by Blackwell et al.¹¹. After 2 weeks of training, the mice were split into two surgical groups. Mice were placed in a plexiglass box with dimensions (5 by 6 by 9 inches) for training and video recording of string pulling behavior. 3D printed string holders were used to standardize string placement in each box.

Iatrogenic rodent rotator cuff injury

One group (n = 6 mice) underwent a right supraspinatus (SS) and infraspinatus (IS) tendon transection and denervation (TTDN) while another group (n = 6 mice) underwent right SS and IS TTDN with immediate repair of the torn tendons as described by Wang et al.³⁶. String pulling behavior was recorded for all mice at their pre-operative baseline and at postoperative weeks 1, 2, 3 and 4. Prior to each recording on the postoperative weeks 1–4, mice were given a brief string pulling training session as a reminder of the task requirements. This recording timeline was based on prior work from our lab³⁶ correlating a four-week time window as sufficiently long to witness the emergence of clear histological changes in rotator cuff muscle quality.

Rodent video recordings

A 1920 × 1080 HD video camera recording at 59.94 frames-per-second was used to acquire string pulling videos. The location of the camera relative to the behavior box was fixed across sessions using a tripod positioned at the center of the box and set 20 cm away from the front pane of plexiglass. Video recordings (which were ~ 15 to 30 s in length for each pulling trial) were then trimmed with *ffmpeg* v4.4.2 to contain only the string pulling behavior. Each day's recording sessions involved collecting 3 technical replicates (i.e. separate string pulling videos) from each mouse.

Kinematic segmentation

The X/Y coordinates of each hand were acquired with *DeepLabCut* (DLC) v2.2.0 using a ResNet50 deep convolutional neural network model. Two DLC models were built across the experiment: (1) a pilot cohort of 3 mice and (2) a full model that included data from all 13 mice pooled together (including mice in the pilot experiment). The locations of the right and left hands were labeled for 320 and 1080 video frames across the pilot and full models, respectively. After initial training, an extra 160 and 1440 frames were extracted as outliers (based on a criteria of ≥ 10 pixel jumps in Euclidean distance between consecutively labeled points across video frames) for the pilot and full models, respectively. Each iteration of the ResNet50 model was trained for 200,000 iterations and the resultant mean Euclidean error in label location (determined on a held-out set of test images consisting of 5% of the frames in each training set) was calculated using the built-in DLC function *evaluate_network* (data shown in F1Civ). A total of 27 videos were used for neural network training; all training was performed using an NVIDIA 2080 Ti GPU with default image augmentation enabled.

String pulling trajectory trace post-processing

Once the X/Y coordinates of each hand were segmented using DLC, the resulting traces were highpass filtered with a first-order 0.75 Hz Butterworth filter (to remove trajectory drift from minor postural changes across the pulling cycle) and then lowpass filtered with a third-order 9 Hz Butterworth filter (to remove occasional jitter in trajectory segmentation). All subsequent analyses are performed using filtered data. After filtration, the peaks/troughs in the Y-axis (vertical direction) hand trajectory trace were labeled using SciPy's *find_peaks* function.

Calculation of amplitude and time for reach/pull epochs

Reach epochs were defined as the time between each trough and its successive peak in the Y-axis kinematics trajectory; pull epochs were defined as the time between each peak and its successive trough in the Y-axis kinematics trajectory. For every reach/pull, we measured the amplitude (in pixels) between each successive trough-to-peak and peak-to-trough epoch corresponding to every reach and pull, respectively. Reach/pull time was measured in number of video frames, divided by the video framerate, between each successive trough-to-peak and peak-to-trough epoch corresponding to every reach and pull, respectively.

Calculation of the full width at half maximum

In order to quantify the shape of the string pulling waveform across the experimental timeline, the full width at half maximum (FWHM) was calculated as a hybrid measure of movement fluency during the period of behavior covering both reaching and pulling. To calculate the FWHM, the Y-axis kinematics trace for the right and left hands was mean-centered and the periods of the pulling trajectory between the signals' negative-to-positive and positive-to-negative zero-crossing was extracted for analysis. Each epoch was interpolated using a 100 point 2nd-degree univariate spline, and the FWHM was calculated as the width (in fractional video frame number) of each peak at $\frac{1}{2}$ its vertical amplitude. See Fig. 2E for example FWHM values (black lines) overlaid on a representative string pulling waveform.

Calculation of velocity and acceleration

To calculate velocity and acceleration of the right and left hands across the transition from reaching to pulling, the Y-axis kinematics trace for the right and left hands was processed as described in the section on calculating the full width at half maximum of the signal. After extracting the interpolated signal, the first and second derivatives were taken as measures of velocity and acceleration, respectively. See Fig. 2E for example velocity values (green lines) overlaid on a representative string pulling waveform.

Correlation in hand movement

To measure the consistency of string pulling behavior across the right and left hands, we calculated Pearson's correlation coefficients by correlating X_{right} with X_{left} and Y_{right} with Y_{left} kinematic traces (all correlations were run after data was high pass and low pass filtered). All correlations were run within animal and within day.

Quantifying kinematic synergies using principal component analysis

The shoulder is a complex joint that allows for multiplanar motion across arm flexion, extension, abduction, adduction, internal rotation, and external rotation. Moreover, shoulder motion is intimately tied to scapular and thoracic mobility as both contribute to stabilization of the upper extremity across its full range of motion; in total, about 20 skeletal muscles contribute to shoulder motion⁸. Prior research on the human hand, has shown significant biomechanical and temporal linking across joints during various hand movements thus suggesting that the biomechanical and neural representations of the hand are significantly lower dimensional than the degrees of freedom conferred by individual muscles and joints would imply^{28,29}.

Here we studied kinematic synergies by performing singular value decomposition (SVD) independently on each string pulling epoch from individual mice across weeks. In brief, the filtered kinematics trace containing data for the right hand X-axis movement, right hand y-axis movement, left hand x-axis movement, and left hand y-axis movement were mean-centered and then concatenated into a matrix $T \in R^{4 \times t}$ with t representing the number of video frames in each video recorded from a given mouse on a given week.

The matrix T was decomposed using SVD into the matrices $U \in R^{4 \times 4}$, $S \in R^{4 \times 4}$, and $V^T \in R^{4 \times t}$. The columns (i.e., principal components) of U capture the covariation patterns between the four tracked kinematic variables, with the individual weights of each column capturing both the magnitude and direction with which each kinematic variable contributes to that particular component. The absolute value of the weights in the first principal

component were used to capture the magnitude of these kinematic variables for right and left hand Y-axis movement in Fig. 4e. The percent variance explained by each principal component is calculated by squaring the singular values in matrix S and then dividing each squared singular value by the sum of all squared singular values (reported in Fig. 4d for the first two PCs). The variance explained by each PC has previously been shown to correlate with the dimensionality of the kinematic synergies, with lower variances explained by each individual PC corresponding to a higher dimensional kinematic synergy as more PCs are required to reach the same cumulative proportion of explained variance. Lastly, each row of the matrix V^T captures the relative temporal contribution of each principal component across each video recording.

Bispectral coherence (bicoherence) analysis

In order to understand the temporal relationship between activation of PC1 and PC2, we used bicoherence to measure the cross-frequency coupling between the right singular vectors corresponding to PCs 1 and 2. In brief, we used the *scipy* 'spectrogram' function to take the time-frequency decomposition of right singular vectors of PCs 1 and 2 using an FFT window length of 2 s with 1 s of overlap. The bicoherence analysis was then performed as described elsewhere³¹. Because individual videos contained behavioral epochs of differing lengths, the resulting bicoherence values were linearly interpolated between 0–15 Hz in 0.1 Hz increments for each subject.

Human data recordings

All patients gave their written informed consent to participate in the study. All protocols and procedures were performed in accordance to guidelines and regulations set forth by the University of California, San Francisco (UCSF) Committee on Human Research and with prior approval from the UCSF Institutional Review Board (IRB). Control and rotator cuff injury patients were recruited through convenience sampling at the UCSF Orthopedic Institute. Study participants were given minimal instruction on how to perform the string pulling task by the lead study author (D.D.) and then allowed to string pull at their own preferred rhythm and kinematic preference. Video was recorded using a tripod-mounted smartphone camera (iPhone 13 Pro Max) set two meters (2 m) away from the front edge of the chair that each subject sat in. Video was recorded in HD resolution (1920 × 1080) at 59.94 frames per second. The resulting videos were subsequently processed in DeepLabCut using 968 training frames and two successive refinement steps (outlier frames were defined as those frames with a Euclidean distance between two successively labeled points of ≥ 20 pixels). We labeled both the hands and the elbows for the human recordings as the elbows were readily visible in our subjects versus rodents where the elbows are hidden by a layer of fur. For subjects in the injury cohort, the arm with the rotator cuff tear was labeled as in the "injured" extremity while the contralateral arm was labeled as the "uninjured extremity."

Human data pre-processing

In order to ensure best performance for the detection of peaks/troughs in our analysis of string pulling amplitude & time, the Y-axis kinematic trajectory for the hands was highpass-filtered at 0.1 Hz with a 1st order Butterworth filter followed by a 7th order Butterworth 7 Hz lowpass filter. The peaks/troughs of this signal were then extracted and analyzed analogously as for rodents, described in the section "Calculation of Amplitude and Time for Reach/Pull Epochs" above. For all other analyses (including calculation of the full width at half maximum, velocity, acceleration, and PCA decomposition) we did not highpass filter the X/Y kinematic trajectories for the hands and elbows instead only performing lowpass filtering as the human data was less noisy when compared to the rodent data. Methods for calculating the full width at half maximum, velocity, acceleration, and PCA decomposition of the signals were performed analogously to our methods used for analyzing rodent data (see sections "Calculation of the Full Width at Half Maximum", "Calculation of the Velocity and Acceleration", and "Quantifying Kinematic Synergies Using Principal Component Analysis" above).

Movement dynamic range ratio

Because we are able to track the position of both the hands and the elbows in our human subjects, we calculated a Movement Dynamic Range Ratio that quantified the relative contribution of hand versus elbow movements in the string pulling behavior. The Movement Dynamic Range Ratio was calculated by first taking the standard deviation of the lowpass filtered Y-axis kinematic trajectories for each subject's hands and elbows. We then took the within-subject ipsilateral ratio between the two standard deviation values (e.g. $\frac{\text{Std.Dev.RightHand}}{\text{Std.Dev.RightElbow}}$) across the right/left hand and elbow. These values were then reported as mean \pm SEM in Fig. 6h. As intuition, if subjects predominantly moved the arm from the shoulder as the main pivot point, the elbows and the hands would exhibit roughly the same vertical displacement in space (i.e. the Movement Dynamic Range Ratio would be close to 1; see Fig. 6h, control shoulders). On the other hand, if subjects immobilize the shoulder and instead move the arm through rotation of the humerus around its longitudinal axis, we would expect a the vertical displacement of the hands to exceed the vertical displacement of the elbows (i.e. the Movement Dynamic Range Ratio would be greater than 1; see Fig. 6h, injured shoulders).

Logistic regression classifier

In order to determine if the biomarkers calculated from the string pulling waveform can serve as predictors for shoulder injury, we built a binary logistic classifier using the *LogisticRegression* class from the *scikit-learn* package. For the right and left arm of each participant's video we included as independent variables: mean reach time, mean pull time, mean reach amplitude, mean pull amplitude, mean FWHM, mean velocity, symmetry ratio (right:left arm) for mean reach amplitude and time, symmetry ratio (right:left arm) for mean pull amplitude and time, and the dynamic range ratio. The optimal L2 norm regularization parameter (C , 0.001) was determined via K-fold cross-validation using the *GridSearchCV* method. In order to calculate the receiver operator characteristic

(ROC) curve and the area under the curve (AUC), we used *scikit-learn*'s stratified K-fold cross-validation helper function *StratifiedKFold* ($n = 3$ folds), and all models were fit using the *saga* solver.

Statistics

One-, two-, and three-way ANOVAs were used as omnibus tests for differences in means across groups. Tukey multiple comparison corrected post-hoc tests were used as follow-up if an ANOVA revealed a statistically significant main effect (or interaction term for two-way and three-way ANOVAs). Levene's test was used to test for statistical differences in variance. Other statistical tests were performed as noted in the text and figure legends. All data is presented as the Mean \pm Standard Error of the Mean (SEM) unless otherwise noted. All statistical analyses were performed using Python v3.10.5 in either the *statsmodels* or *scipy* packages.

Data availability

The data and custom code that support the rodent findings in this study are available from the Senior Author (Brian T. Feeley, brian.feeley@ucsf.edu) upon reasonable request. Human subjects data is not available for distribution because study participants did not consent to such sharing.

Received: 21 June 2023; Accepted: 7 November 2023

Published online: 15 November 2023

References

1. Symptoms Matter—Leading Causes of Disability. *NCCIH* <https://www.nccih.nih.gov/about/symptoms-matter-leading-causes-of-disability>
2. Freburger, J. K. & Holmes, G. M. Physical therapy use by community-based older people. *Phys. Ther.* **85**, 19–33 (2005).
3. Arnadottir, S. A. & Jonsson, B. G. Outpatient physical therapy population has been aging faster than the general population: A total population register-based study. *BMC Health Serv. Res.* **21**, 708 (2021).
4. Urwin, M. *et al.* Estimating the burden of musculoskeletal disorders in the community: The comparative prevalence of symptoms at diVerent anatomical sites, and the relation to social deprivation. *Ann. Rheum. Disease* **57**, 649 (1998).
5. Tempelhof, S., Rupp, S. & Seil, R. Age-related prevalence of rotator cuff tears in asymptomatic shoulders. *J. Shoulder Elbow Surg.* **8**, 296–299 (1999).
6. Minagawa, H. *et al.* Prevalence of symptomatic and asymptomatic rotator cuff tears in the general population: From mass-screening in one village. *J. Orthop.* **10**, 8–12 (2013).
7. Lansdown, D. A. & Feeley, B. T. Evaluation and treatment of rotator cuff tears. *Phys. Sportsmed.* **40**, 73–86 (2012).
8. Terry, G. C. & Chopp, T. M. Functional anatomy of the shoulder. *J. Athl. Train.* **35**, 248–255 (2000).
9. Liu, X. *et al.* A mouse model of massive rotator cuff tears. *J. Bone Joint Surg.* **94**, e41 (2012).
10. Liu, X. *et al.* Investigating the cellular origin of rotator cuff muscle fatty infiltration and fibrosis after injury. *Muscles Ligaments Tendons J.* **6**, 6–15 (2016).
11. Blackwell, A. A., Banovetz, M. T., Whishaw, I. Q. & Wallace, D. G. The structure of arm and hand movements in a spontaneous and food rewarded on-line string-pulling task by the mouse. *Behav. Brain Res.* **345**, 49–58 (2018).
12. Jacobs, I. F. & Osvath, M. The string-pulling paradigm in comparative psychology. *J. Comp. Psychol.* **129**, 89–120 (2015).
13. Schwartz, C., Hazée, A., Denoël, V. & Brûls, O. Shoulder injury prevention in sports using 3d motion capture. 1.
14. Rawashdeh, S. A., Rafeldt, D. A., Uhl, T. L. & Lumppp, J. E. Wearable motion capture unit for shoulder injury prevention. In *2015 IEEE 12th International Conference on Wearable and Implantable Body Sensor Networks (BSN)* 1–6 (IEEE, 2015). <https://doi.org/10.1109/BSN.2015.7299417>
15. Gritsenko, V. *et al.* Feasibility of using low-cost motion capture for automated screening of shoulder motion limitation after breast cancer surgery. *PLOS ONE* **10**, e0128809 (2015).
16. Park, C. *et al.* Comparative accuracy of a shoulder range motion measurement sensor and Vicon 3D motion capture for shoulder abduction in frozen shoulder. *Technol. Health Care* **30**, 251–257 (2022).
17. Jackson, M., Michaud, B., Tétreault, P. & Begon, M. Improvements in measuring shoulder joint kinematics. *J. Biomech.* **45**, 2180–2183 (2012).
18. Charbonnier, C., Chagué, S., Kolo, F. C., Chow, J. C. K. & Lädermann, A. A patient-specific measurement technique to model shoulder joint kinematics. *Orthop. Traumatol. Surg. Res.* **100**, 715–719 (2014).
19. Shin, S. H., Ro, D. H., Lee, O.-S., Oh, J. H. & Kim, S. H. Within-day reliability of shoulder range of motion measurement with a smartphone. *Man. Ther.* **17**, 298–304 (2012).
20. Werner, B. C. *et al.* Validation of an innovative method of shoulder range-of-motion measurement using a smartphone clinometer application. *J. Shoulder Elbow Surg.* **23**, e275–e282 (2014).
21. Mejia-Hernandez, K. *et al.* Smartphone applications for the evaluation of pathologic shoulder range of motion and shoulder scores: A comparative study. *JSES Open Access* **2**, 109–114 (2018).
22. Roldán-Jiménez, C., Martín-Martín, J. & Cuesta-Vargas, A. I. Reliability of a smartphone compared with an inertial sensor to measure shoulder mobility: Cross-sectional study. *JMIR MHealth UHealth* **7**, e13640 (2019).
23. Pichonnaz, C. *et al.* Heightened clinical utility of smartphone versus body-worn inertial system for shoulder function B-B score. *PLOS ONE* **12**, e0174365 (2017).
24. Cuesta-Vargas, A. I. & Roldán-Jiménez, C. Validity and reliability of arm abduction angle measured on smartphone: A cross-sectional study. *BMC Musculoskelet. Disord.* **17**, 93 (2016).
25. Shimizu, H. *et al.* Validity and reliability of a smartphone application for self-measurement of active shoulder range of motion in a standing position among healthy adults. *JSES Int.* **6**, 655–659 (2022).
26. Beshara, P., Anderson, D. B., Pelletier, M. & Walsh, W. R. The reliability of the microsoft kinect and ambulatory sensor-based motion tracking devices to measure shoulder range-of-motion: A systematic review and meta-analysis. *Sensors* **21**, 8186 (2021).
27. Mathis, A. *et al.* DeepLabCut: Markerless pose estimation of user-defined body parts with deep learning. *Nat. Neurosci.* **21**, 1281–1289 (2018).
28. Natraj, N., Silversmith, D. B., Chang, E. F. & Ganguly, K. Compartmentalized dynamics within a common multi-area mesoscale manifold represent a repertoire of human hand movements. *Neuron* **110**, 154–174.e12 (2022).
29. Ejaz, N., Hamada, M. & Diedrichsen, J. Hand use predicts the structure of representations in sensorimotor cortex. *Nat. Neurosci.* **18**, 1034–1040 (2015).
30. Safavynia, S., Torres-Oviedo, G. & Ting, L. Muscle synergies: Implications for clinical evaluation and rehabilitation of movement. *Top. Spinal Cord Inj. Rehabil.* **17**, 16–24 (2011).
31. Understanding phase-amplitude coupling from bispectral analysis. 17.

32. Soslowky, L. J., Carpenter, J. E., DeBano, C. M., Banerji, I. & Moalli, M. R. Development and use of an animal model for investigations on rotator cuff disease. *J. Shoulder Elbow Surg.* **5**, 383–392 (1996).
33. Perry, S. M., Getz, C. L. & Soslowky, L. J. Alterations in function after rotator cuff tears in an animal model. *J. Shoulder Elbow Surg.* **18**, 296–304 (2009).
34. Messner, K., Wei, Y., Andersson, B., Gillquist, J. & Räsänen, T. Rat model of achilles tendon disorder. *Cells Tissues Organs* **165**, 30–39 (1999).
35. Fu, S.-C., Chan, K.-M., Chan, L.-S., Fong, D.T.-P. & Lui, P.-Y.P. The use of motion analysis to measure pain-related behaviour in a rat model of degenerative tendon injuries. *J. Neurosci. Methods* **179**, 309–318 (2009).
36. Wang, Z. *et al.* A mouse model of delayed rotator cuff repair results in persistent muscle atrophy and fatty infiltration. *Am. J. Sports Med.* **46**, 2981–2989 (2018).
37. Sarver, J. J., Dishowitz, M. I., Kim, S.-Y. & Soslowky, L. J. Transient decreases in forelimb gait and ground reaction forces following rotator cuff injury and repair in a rat model. *J. Biomech.* **43**, 778–782 (2010).
38. Singh, S. *et al.* Human string-pulling with and without a string: Movement, sensory control, and memory. *Exp. Brain Res.* **237**, 3431–3447 (2019).
39. Bizzi, E., Cheung, V. C. K., d'Avella, A., Saltiel, P. & Tresch, M. Combining modules for movement. *Brain Res. Rev.* **57**, 125–133 (2008).
40. Santello, M., Flanders, M. & Soechting, J. F. Postural hand synergies for tool use. *J. Neurosci.* **18**, 10105–10115 (1998).

Acknowledgements

We express our sincere appreciation to Sierra K. Lear for copy-editing and feedback on this work, as well as to Nikhilesh Natraj and Preeya Khanna for input on computational methodology. This work is supported by NIH 1 F31 NS127514-01 to D.D. and NIH 1R01AR072669, VA BLRD 11O1BX002680 grants to B.T.F. and X.L.

Author contributions

Conceptualization: D.M.D., M.R.D., X.L. and B.T.F.; data curation: D.M.D. and D.A.H.; formal analysis: D.M.D.; funding acquisition: M.R.D., X.L. and B.T.F.; investigation: D.M.D., D.A.H. and F.A.G.; methodology: D.M.D.; project administration: D.M.D., X.L. and B.T.F.; resources: D.M.D., X.L. and B.T.F.; software: D.M.D.; supervision: D.M.D., X.L. and B.T.F.; validation: D.M.D.; visualization: D.M.D.; writing—original draft: D.M.D. and D.A.H.; writing—review and editing: D.M.D., D.A.H., X.L. and B.T.F.

Competing interests

D.M.D., M.R.D., X.L., and B.T.F. have submitted a provisional patent application that includes the findings reported here. D.A.H. and F.A.G. have no conflicts of interest to disclose.

Additional information

Supplementary Information The online version contains supplementary material available at <https://doi.org/10.1038/s41598-023-46966-4>.

Correspondence and requests for materials should be addressed to B.T.F.

Reprints and permissions information is available at www.nature.com/reprints.

Publisher's note Springer Nature remains neutral with regard to jurisdictional claims in published maps and institutional affiliations.



Open Access This article is licensed under a Creative Commons Attribution 4.0 International License, which permits use, sharing, adaptation, distribution and reproduction in any medium or format, as long as you give appropriate credit to the original author(s) and the source, provide a link to the Creative Commons licence, and indicate if changes were made. The images or other third party material in this article are included in the article's Creative Commons licence, unless indicated otherwise in a credit line to the material. If material is not included in the article's Creative Commons licence and your intended use is not permitted by statutory regulation or exceeds the permitted use, you will need to obtain permission directly from the copyright holder. To view a copy of this licence, visit <http://creativecommons.org/licenses/by/4.0/>.

© The Author(s) 2023