



OPEN

Publisher Correction: Atmospheric observations suggest methane emissions in north-eastern China growing with natural gas use

Fenjuan Wang , Shamil Maksyutov , Rajesh Janardanan , Aki Tsuruta , Akihiko Ito , Isamu Morino , Yukio Yoshida, Yasunori Tohjima , Johannes W. Kaiser , Xin Lan , Yong Zhang, Ivan Mammarella , Jost V. Lavric  & Tsuneo Matsunaga 

Correction to: *Scientific Reports* <https://doi.org/10.1038/s41598-022-19462-4>, published online 17 November 2022

The original version of this Article contained an error in the upper panel of Figure 4, where the Total CH₄ emission was inadvertently shown in three lines instead of in a solid line with the uncertainty displayed in orange shadow. The original Figure 4 and accompanying legend appear below.

The original Article has been corrected.

Published online: 02 February 2023

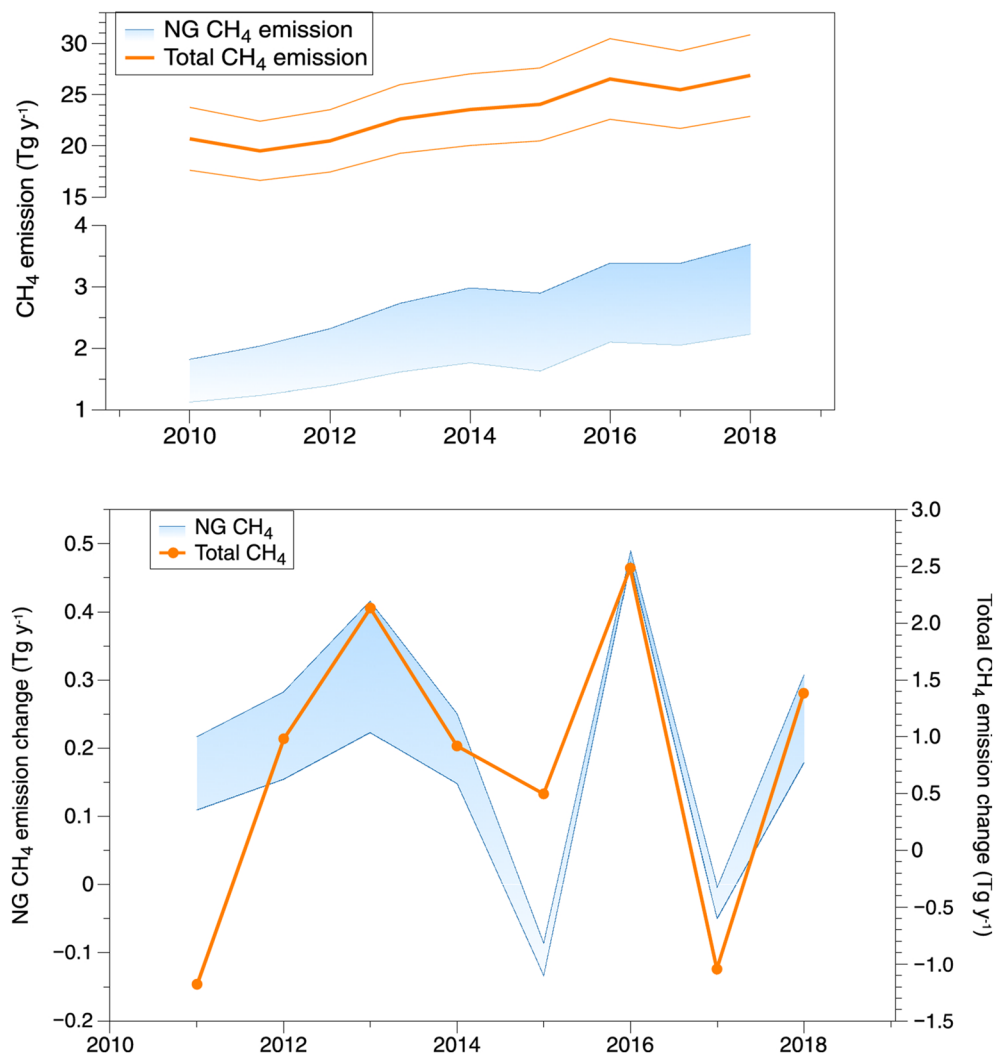


Figure 4. Estimated CH₄ emissions from NG (up and low range) and total CH₄ emission (estimation in a solid line with uncertainty in shadow in NE during 2010–2018 (left panel) (detailed data in Supplementary Table S2) and CH₄ emission increment relative to previous year (right panel).

Open Access This article is licensed under a Creative Commons Attribution 4.0 International License, which permits use, sharing, adaptation, distribution and reproduction in any medium or format, as long as you give appropriate credit to the original author(s) and the source, provide a link to the Creative Commons licence, and indicate if changes were made. The images or other third party material in this article are included in the article's Creative Commons licence, unless indicated otherwise in a credit line to the material. If material is not included in the article's Creative Commons licence and your intended use is not permitted by statutory regulation or exceeds the permitted use, you will need to obtain permission directly from the copyright holder. To view a copy of this licence, visit <http://creativecommons.org/licenses/by/4.0/>.

© The Author(s) 2023