



OPEN

Static and stationary dark fluid universes: a gravitoelectromagnetic perspective

M. Nouri-Zonoz^{1✉} & A. Nourizonoz²

The usual characterization of exact solutions of Einstein field equations, including cosmological solutions, is based on the symmetry properties of their corresponding metrics which is obviously mathematically involved. Here we present a physical characterization of the static and stationary perfect fluid solutions of the Einstein field equations by employing the 1 + 3 formulation of spacetime decomposition which introduces the so-called quasi-Maxwell form of the Einstein field equations in the broader context of gravitoelectromagnetism. These solutions have a single or 2-component perfect fluid sources, and are characterized according to their gravitoelectric and gravitomagnetic fields which are the gravitational analogs of the electromagnetic fields. It is shown that the absence or presence of either or both of these fields could restrict the equations of state of the contributing perfect fluid sources. As the representative of each family of solutions, we consider those spaces that include the cosmological term as a dark fluid source with the equation of state $p = -\rho = \text{constant}$.

There are detailed discussions of exact solutions of Einstein field equations (EFE), and their characterization based on different symmetry groups of either geometric objects, such as Weyl and Ricci tensors, or the energy-momentum tensor of the source¹. Usually to have a sound grasp of these kind of classifications and the related spacetime metrics and their characteristics, one needs a somewhat advanced mathematical background. Here we introduce a more physical classification, specifically of static and stationary perfect fluid solutions, which explains more clearly their physical characteristics. These spacetimes have played a pivotal role in the evolution of the cosmological models, and have been discussed extensively in the exact solution literature^{1,2}. In these solutions there could be more than one perfect fluid source, each with a different barotropic equation of state (EOS). Employing the quasi-Maxwell form of the Einstein field equations for multi-component perfect fluid sources, here we show how a combination of different choices for the gravitoelectromagnetic (GEM) fields, along with different EOS for different perfect fluid sources, could naturally lead to well-known static and stationary perfect fluid spacetimes as the representative of each class, hence furnishing a physical characterization of these spacetimes. The presence or absence of either or both of the gravitoelectric (GE) and gravitomagnetic (GM) fields could in some cases, not only restrict the minimum number of the perfect fluid sources, but also fix their EOS. We will treat the cosmological term, Λg_{ab} , as a perfect (dark) fluid source with EOS $p_\Lambda = -\rho_\Lambda$, in which $\rho_\Lambda = \frac{\Lambda}{8\pi}$. Interestingly enough we will find out that in some cases the sign of the cosmological constant, or equivalently ρ_Λ , is fixed by our choice of the GEM fields. Indeed, as an interesting example of the above characterization, it has already been shown that the de Sitter space, and the so called de Sitter-type spacetimes are the only *static single-component* perfect fluid solutions of EFE in the *non-comoving* frames³. Characterizing them in this way, the apparent paradox raised by some authors^{4,5} on why there are different static spacetimes with Λ as their only parameter was resolved. De Sitter-type spacetimes are axially and cylindrically symmetric static *Einstein spaces* (solutions of $R_{ab} = \Lambda g_{ab}$) with Λ as their only parameter, so that they were first expected to be the good old de Sitter spacetime just in different coordinate systems. But they were found to be genuinely different from de Sitter space, when their curvature invariants as well as their dynamical forms in the *comoving synchronous* coordinate systems were calculated.

These findings motivated the idea that one should consider a *perfect fluid nature* for the cosmological term and assign a 4-velocity to this dark fluid, in order to be able to interpret the *directional expansion* of the de Sitter-type spacetimes in their dynamical forms³.

¹Department of Physics, University of Tehran, North Karegar Ave., Tehran 14395-547, Iran. ²Department of Physics, Shahid Beheshti University, G.C., Evin, Tehran 19839, Iran. ✉email: nouri@ut.ac.ir

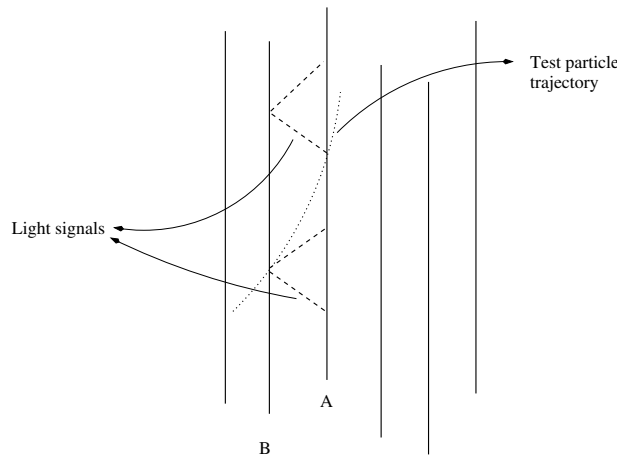


Figure 1. A congruence of nearby worldlines of fundamental observers and a test particle crossing them. The observers (A) and (B) exchange radar signals to define spatial distances and the 3-velocity of a test particle in terms of the synchronized proper time.

Here we will show how the static and stationary dark fluid universes could be characterized in terms of their gravitoelectromagnetic fields in a fundamental observer’s frame adapted to the time-like Killing vector field of the corresponding spacetimes.

The outline of the paper is as follows. In the next section we introduce the 1 + 3 or *threading* formulation of spacetime decomposition, and the quasi-Maxwell form of the Einstein field equations. In four subsections of “[Static and stationary perfect fluid solutions](#)” section, using the characterization based on the quasi-Maxwell form of EFE, and the gravitoelectromagnetic fields, we show how the homogeneous static and stationary perfect fluid solutions could be categorized.

Throughout, the Latin indices run from 0 to 3 while the Greek ones run from 1 to 3, and we will use the units in which $c = G = 1$.

Gravitoelectromagnetism and the quasi-Maxwell form of the Einstein field equations

The 1 + 3 or *threading* formulation of spacetime decomposition is the decomposition of spacetime by the worldlines of *fundamental observers* who are at fixed spatial points in a gravitational field. In other words, these worldlines, sweeping the history of the spatial positions of the fundamental observers, decompose the underlying spacetime into timelike threads⁶. In stationary asymptotically flat spacetimes, these observers are at rest with respect to the distant observers in the asymptotically flat region. Employing propagation of radar signals between two nearby fundamental observers the spacetime metric could be expressed in the following general form,

$$ds^2 = d\tau_{sy}^2 - dl^2 = g_{00}(dx^0 - g_\alpha dx^\alpha)^2 - \gamma_{\alpha\beta} dx^\alpha dx^\beta, \tag{1}$$

where $g_\alpha = -\frac{g_{0\alpha}}{g_{00}}$ and

$$\gamma_{\alpha\beta} = -g_{\alpha\beta} + \frac{g_{0\alpha}g_{0\beta}}{g_{00}} ; \quad \gamma^{\alpha\beta} = -g^{\alpha\beta}, \tag{2}$$

is the spatial metric of a 3-space Σ_3 , on which dl gives the element of spatial distance between any two nearby events. Also, $d\tau_{sy} = \sqrt{g_{00}}(dx^0 - g_\alpha dx^\alpha)$ gives the infinitesimal interval of the so-called *synchronized proper time* between any two events. In other words any two simultaneous events have a world-time difference of $dx^0 = g_\alpha dx^\alpha$. The origin of this definition of a time interval could be explained through the following procedure for definition of a particle’s 3-velocity. If the particle passes point B (with spatial coordinates x^α) at the moment of world time x^0 and arrives at the infinitesimally distant point A (with spatial coordinates $x^\alpha + dx^\alpha$) at the moment $x^0 + dx^0$, then to determine its velocity we must now take, difference between $x^0 + dx^0$ and the moment $x^0 - \frac{g_{0\alpha}}{g_{00}} dx^\alpha$ which is *simultaneous* at the point B with the moment x^0 at the point A (Fig. 1). Now upon dividing the infinitesimal spatial coordinate interval dx^α by this time difference the 3-velocity of a particle in the underlying spacetime is given by^{6,7}

$$v^\alpha = \frac{dx^\alpha}{d\tau_{sy}} = \frac{dx^\alpha}{\sqrt{g_{00}}(dx^0 - g_\alpha dx^\alpha)}. \tag{3}$$

Obviously, in the case of static spacetimes (i.e., $g_{0\alpha} = 0$) the above definition reduces to the proper velocity defined by $v^\alpha = \frac{1}{\sqrt{g_{00}}} \frac{dx^\alpha}{dx^0}$ (for a detailed discussion on the definition of 3-velocity refer to⁸).

Substituting the above definition of 3-velocity in Eq. (1), one can show the following relation between the proper and synchronized proper times

$$d\tau^2 = g_{00}(dx^0 - g_\alpha dx^\alpha)^2 [1 - v^2] = d\tau_{sy}^2 (1 - v^2). \tag{4}$$

Also the components of the 4-velocity $u^i = dx^i/d\tau$ of a test particle, in terms of the components of its 3-velocity, are given by

$$u^\alpha = \frac{v^\alpha}{\sqrt{1 - v^2}}, \quad u^0 = \frac{1}{\sqrt{1 - v^2}} \left(\frac{1}{\sqrt{g_{00}}} + g_\alpha v^\alpha \right). \tag{5}$$

Obviously the comoving frame is defined by $v^\alpha = 0$ leading to $u^i = (\frac{1}{\sqrt{g_{00}}}, 0, 0, 0)$ as expected.

Applying the above formalism we define the 3-force acting on a test particle in a stationary gravitational field as the 3-dimensional covariant derivative of the particle's 3-momentum with respect to the synchronized proper time^{6,7}, i.e.,

$$f^\mu \equiv \frac{Dp^\mu}{d\tau_{sy}} = \sqrt{1 - v^2} \frac{Dp^\mu}{d\tau}, \tag{6}$$

in which we used Eq. (4) to write it in terms of the proper time. Since by definition $p^\mu = mu^\mu$, we use the spatial components of the geodesic equation for a test particle, namely

$$\frac{du^\mu}{d\tau} = -\Gamma_{ab}^\mu u^a u^b = -\Gamma_{00}^\mu (u^0)^2 - 2\Gamma_{0\beta}^\mu u^0 u^\beta - \Gamma_{\alpha\beta}^\mu u^\alpha u^\beta. \tag{7}$$

and substitute expressions for the connection coefficients in terms of the 3-dimensional objects and the 4-velocity components from (5), to arrive at the following expression for the Lorentz-type gravitational 3-force,

$$f^\mu = \sqrt{1 - v^2} \frac{d}{d\tau} \frac{mv^\mu}{\sqrt{1 - v^2}} + \lambda_{\alpha\beta}^\mu \frac{mv^\alpha v^\beta}{\sqrt{1 - v^2}}, \tag{8}$$

in which $\lambda_{\alpha\beta}^\mu$ is the 3-dimensional Christoffel symbol constructed from $\gamma_{\alpha\beta}$. Intuitively, this shows that test particles moving on the geodesics of a stationary spacetime depart from the geodesics of the 3-space Σ_3 as if acted on by the above-defined gravitational 3-force. Lowering the index, in its vectorial form the above expression could be written in the following form,

$$\mathbf{f}_g = \frac{m}{\sqrt{1 - v^2}} (\mathbf{E}_g + \mathbf{v} \times \sqrt{g_{00}} \mathbf{B}_g), \tag{9}$$

in which the gravitoelectric (GE) and gravitomagnetic (GM) 3-fields (with lower and upper indices respectively), are defined as follows

$$\mathbf{E}_g = -\nabla \ln \sqrt{h} \ ; \ (h \equiv g_{00}) \tag{10}$$

$$\mathbf{B}_g = \text{curl} (\mathbf{A}_g) \ ; \ (A_{g\alpha} \equiv g_\alpha), \tag{11}$$

in which $\ln \sqrt{h}$ and \mathbf{A}_g are the so-called GE and GM potentials respectively⁹ (Note that the differential operations in these relations are defined in the 3-space Σ_3 with metric $\gamma_{\mu\nu}$. Specifically, divergence and curl of a vector are defined as $\text{div} \mathbf{V} = \frac{1}{\sqrt{\gamma}} \frac{\partial}{\partial x^\mu} (\sqrt{\gamma} V^\mu)$ and $(\text{curl} \mathbf{V})^\mu = \frac{1}{2\sqrt{\gamma}} \epsilon^{\mu\alpha\beta} (\frac{\partial V_\alpha}{\partial x^\beta} - \frac{\partial V_\beta}{\partial x^\alpha})$, respectively with $\gamma = \det \gamma_{\mu\nu}$). It is noticed that GE part of the GEM Lorentz-type force (9) is the general relativistic version of the gravitational force in Newtonian gravity¹⁰, while its GM part has no counterpart in Newtonian gravity.

To better understand the meaning of gravitoelectromagnetic fields, a comparison with the electromagnetic fields of a charged sphere in electromagnetism would be in order. For an observer which is fixed with respect to such a sphere, it will produce only an electric field if non-rotating, but a rotating charged sphere will also produce a magnetic field due to motion of the charges. Now a massive sphere in this analog picture will produce only a GE field sourced by the mass, if non-rotating, and a GM field as well if rotating. This is due to the motion of the mass (or gravitational charge), and in accordance with Einstein's idea that any form of energy gravitates. As an example, the Kerr metric,

$$ds^2 = \left(1 - \frac{2Mr}{\rho^2} \right) dt^2 + \frac{4Marsin^2\theta}{\rho^2} dt d\phi - \frac{\rho^2}{\Delta} dr^2 - \rho^2 d\theta^2 - \left(r^2 + a^2 + \frac{2Ma^2r\sin^2\theta}{\rho^2} \right) \sin^2\theta d\phi^2 \tag{12}$$

$$\rho^2 \equiv r^2 + a^2 \cos^2\theta \ , \quad \Delta \equiv r^2 - 2Mr + a^2 \tag{13}$$

representing the spacetime around a rotating source, say a star or a black hole, with m and a denoting its mass and angular momentum per unit mass, has the following GEM fields,

$$E_g^2 = \frac{m^2 \rho^2}{(\Delta)(2mr - \rho^2)^2} + \frac{4a^4 m^2 r^2 \cos^2\theta \sin^2\theta}{\rho^2 (\rho^2 - 2mr)^2} \tag{14}$$

and

$$B_g^2 = \frac{a^2 m^2 (\Delta) (\rho^2 - 2mr) ((a^2 - 2r^2 + a^2 \cos^2 2\theta) \sin^4 \theta + 4\Delta r^2 \sin^2 2\theta)}{4(\rho^2 - 2mr)^4 (4m^2 a^2 r^2 \sin^4 \theta + (\rho^2 - 2mr) \sin^2 \theta (\rho^2 (a^2 + r^2) + 2ma^2 r \sin^2 \theta))} \tag{15}$$

Obviously for a non-rotating star ($a = 0$) the GM field B_g vanishes and we only have the GE field which is the gravitational field of a non-rotating star due to its mass. Indeed the dragging effect of inertial frames by a rotating object, which was tested for Earth by NASA's gravity probe B could be viewed as a gravitomagnetic effect^{11,12}.

One could also extend the analogy between the quasi-Maxwell part of the EFE and electromagnetism by introducing a gravitational Maxwell-type field tensor whose elements are nothing but the GE and GM fields⁹.

For general time-dependent spacetimes, it is not difficult to show that in the weak field approximation, the standard linearized field equations could be written in terms of the gravitoelectromagnetic 4-potential $A_i = (\ln \sqrt{h}, \mathbf{A}_g)$. These equations are very similar to the electromagnetic wave equations, and hence suitable for studying gravitational waves in the context of gravitoelectromagnetism¹³.

Obviously by their definition, the GEM fields satisfy the following constraints

$$\nabla \times \mathbf{E}_g = 0, \quad \nabla \cdot \mathbf{B}_g = 0. \tag{16}$$

Now in terms of the GEM fields measured by the fundamental observers, the Einstein field equations for a multi-component fluid sources, each having an energy-momentum tensor $T_{ab} = (p + \rho)u_a u_b - pg_{ab}$ with $u^a u_a = 1$, could be written in the following quasi-Maxwell form⁷,

$$\nabla \cdot \mathbf{E}_g = \frac{1}{2} h B_g^2 + E_g^2 - 8\pi \Sigma_i \left(\frac{p_i + \rho_i}{1 - v_i^2} - \frac{\rho_i - p_i}{2} \right) \tag{17}$$

$$\nabla \times (\sqrt{h} \mathbf{B}_g) = 2\mathbf{E}_g \times (\sqrt{h} \mathbf{B}_g) - 16\pi \Sigma_i \left(\frac{p_i + \rho_i}{1 - v_i^2} \right) \mathbf{v}_i \tag{18}$$

$${}^{(3)}P^{\mu\nu} = -E_g^{\mu;\nu} + \frac{1}{2} h (B_g^\mu B_g^\nu - B_g^2 \gamma^{\mu\nu}) + E_g^\mu E_g^\nu + 8\pi \Sigma_i \left(\frac{p_i + \rho_i}{1 - v_i^2} v_i^\mu v_i^\nu + \frac{\rho_i - p_i}{2} \gamma^{\mu\nu} \right), \tag{19}$$

in which \mathbf{v}_i is the 3-velocity of the i -th component of the source fluid as defined in (3). Also ${}^{(3)}P^{\mu\nu}$ is the three-dimensional Ricci tensor made out of the 3-d metric $\gamma^{\mu\nu}$. Here we focus on 2-component fluid sources so that $i = 1, 2$.

The above formalism has been employed to derive gravitational analogs of some well known electromagnetic effects^{7,14–19}. It has also been used to discover and interpret exact solutions of the EFE^{20,21} and study gravitational lensing²².

Static and stationary perfect fluid solutions

Using the quasi-Maxwell form of the Einstein field equations (17)–(19), in what follows we will employ the following three criteria to characterize well-known static and stationary perfect fluid solutions:

- I. Vanishing of either or both of the gravitoelectric (E_g) and gravitomagnetic (B_g) fields.
- II. Number of perfect fluid components and their corresponding EOS.
- III. Fluid components and their frames: either a comoving frame or a non-comoving one.

Indeed in what follows we will find out that applying the first criterion to Eqs. (17) and (18), will automatically restrict both the minimum number of the fluid components as well as their EOS in a given frame.

As the representative solution in each family with the lowest number of parameters, in the case of static spacetimes we consider spherically symmetric solutions whereas in the case of stationary spacetimes we restrict our attention to axially and cylindrically symmetric cases.

Spacetimes without gravitoelectromagnetic fields E_g and B_g : Einstein static universe. Substituting $E_g = 0$ and $B_g = 0$ in Eqs. (17), (18) we end up with the following equations,

$$\Sigma_i \left(\frac{p_i + \rho_i}{1 - v_i^2} - \frac{\rho_i - p_i}{2} \right) = 0 \tag{20}$$

$$\Sigma_i \left(\frac{p_i + \rho_i}{1 - v_i^2} \right) \mathbf{v}_i = 0 \tag{21}$$

$${}^{(3)}P^{\mu\nu} = 8\pi \Sigma_i \left(\frac{p_i + \rho_i}{1 - v_i^2} v_i^\mu v_i^\nu + \frac{\rho_i - p_i}{2} \gamma^{\mu\nu} \right). \tag{22}$$

We notice that the first two equations only include the source specifications and any solution has the following characteristics:

1. It is a static spacetime.
2. With $E_g = B_g = 0$ in the GEM Lorentz-type force (9), there will be no gravitational force acting on test particles in this spacetime, i.e. particles stay where they are.

Now Eq. (21) seems to be satisfied for a *single* component perfect fluid, either with A—any EOS in a *comoving frame* ($v = 0$) or B—a dark fluid with EOS $p = -\rho$.

If we take the first case and substitute $v = 0$ in Eq. (20), that will fix the fluid EOS to $p = \rho/3$ which is that of *incoherent radiation*. Of course photons as particles of radiation are not timelike and do not satisfy $u^\alpha u_\alpha = 1$. Now if we choose the second single component fluid with EOS $p = -\rho$, that will not satisfy Eq. (20). Also it is noticed that we have found these results without recourse to the last equation and in fact none of these choices satisfy Eq. (22) which takes the forms ${}^{(3)}P^{\mu\nu} = \pm 8\pi p \gamma^{\mu\nu}$ (with the minus sign for the dark fluid) for a constant pressure.

From a physical point of view, that a single-component fluid does not lead to a solution is expected, since any kind of normal matter will produce attractive gravity, and hence leads to a collapsing system with $F_g \neq 0$, hence contradicting the second point above. Indeed this was the problem Einstein faced in his 1917 effort to find an static Universe.

Therefore to have a solution we need at least a 2-component fluid which, when plugged into Eqs. (20)–(22), leads to the following equations;

$$\left(\frac{p_1 + \rho_1}{1 - v_1^2} - \frac{\rho_1 - p_1}{2}\right) + \left(\frac{p_2 + \rho_2}{1 - v_2^2} - \frac{\rho_2 - p_2}{2}\right) = 0 \tag{23}$$

$$\left(\frac{p_1 + \rho_1}{1 - v_1^2}\right) \mathbf{v}_1 + \left(\frac{p_2 + \rho_2}{1 - v_2^2}\right) \mathbf{v}_2 = 0 \tag{24}$$

$${}^{(3)}P^{\mu\nu} = 8\pi \left(\frac{p_1 + \rho_1}{1 - v_1^2} v_1^\mu v_1^\nu + \frac{\rho_1 - p_1}{2} \gamma^{\mu\nu}\right) + 8\pi \left(\frac{p_2 + \rho_2}{1 - v_2^2} v_2^\mu v_2^\nu + \frac{\rho_2 - p_2}{2} \gamma^{\mu\nu}\right). \tag{25}$$

Looking at Eq. (24), we notice that one can always satisfy it by choosing one of the fluid components (with any well-known EOS) to be in the *comoving frame* (say $v_1 = 0$), and the second component to have an EOS $p_2 = -\rho_2$, that of a dark fluid. Obviously the next step is to put these values in Eq. (23) to find the relation between the two component densities (or pressures). The last equation, Eq. (25) serves for the application of the required symmetry. Now we could have for the fluid in the comoving frame either 1—dust ($p = 0$), 2—radiation ($p = \rho/3$) or 3—stiff matter ($p = \rho$) leading respectively to:

1. Einstein static universe in which the relation between the two fluid densities is given by $\rho_\Lambda = \frac{\rho_{dust}}{2}$ or equivalently $\Lambda = 4\pi\rho_{dust}$.
2. Static universe filled with incoherent radiation in which the relation between the two fluid densities is given by $\rho_\Lambda = \rho_{radiation}$ or equivalently $\Lambda = 8\pi\rho_{radiation}$ (We notice that this case could be treated in the present formalism, if we consider massive relativistic particles as incoherent radiation).
3. Static universe filled with stiff matter (SM) in which the relation between the two fluid densities is given by $\rho_\Lambda = 2\rho_{SM}$ or equivalently $\Lambda = 16\pi\rho_{SM}$.

In terms of the cosmological constant, the metric of the above three static spherically symmetric spacetimes are given by,

$$ds^2 = dt^2 - \frac{dr^2}{1 - \frac{\Lambda}{\beta} r^2} - r^2(d\theta^2 + \sin^2\theta d\phi^2), \tag{26}$$

in which $\beta = 1, 3/2, 2$ for dust, radiation and stiff matter sources respectively. The above form of the metric shows clearly the flat space limit $\Lambda \rightarrow 0$, and the obvious fact that $\frac{\Lambda}{\beta}$ gives the spacetime curvature for different values of β . In summary, vanishing of both gravitoelectric and gravitomagnetic fields ($E_g = B_g = 0$) is consistent with the static nature of this solution where the repulsion of the dark fluid counterbalances the attraction of the non-dark element which could be dust, incoherent radiation or stiff matter.

Spacetimes without a gravitomagnetic field B_g : de Sitter spacetime. Starting from Eqs. (17)–(19) and setting $B_g = 0$, we end up with the following equations;

$$\nabla \cdot \mathbf{E}_g = E_g^2 - 8\pi \sum_i \left(\frac{p_i + \rho_i}{1 - v_i^2} - \frac{\rho_i - p_i}{2}\right) \tag{27}$$

$$\sum_i \left(\frac{p_i + \rho_i}{1 - v_i^2}\right) \mathbf{v}_i = 0 \tag{28}$$

$${}^{(3)}P^{\mu\nu} = -E_g^{\mu;\nu} + E_g^\mu E_g^\nu + 8\pi \sum_i \left(\frac{p_i + \rho_i}{1 - v_i^2} v_i^\mu v_i^\nu + \frac{\rho_i - p_i}{2} \gamma^{\mu\nu}\right). \tag{29}$$

Again looking at Eq. (28), it seems that we could have a one-component fluid solution either with any EOS in a comoving frame, or if we are looking for a solution in a non-comoving frame, then the only choice would be a dark fluid, namely $p = -\rho$, but now, unlike the previous case in the last section, such a choice is not forbidden by the other two equations. Indeed this case has been thoroughly discussed in³, where it is shown that it leads to a unique characterization of de Sitter and *de Sitter-type* spacetimes as the only one-component *static* perfect fluid solutions of Einstein field equations in a *non-comoving frame*. The well known de Sitter spacetime

$$ds^2 = \left(1 - \frac{\Lambda r^2}{3}\right) c^2 dt^2 - \left(1 - \frac{\Lambda r^2}{3}\right)^{-1} dr^2 - r^2(d\theta^2 + \sin^2 \theta d\phi^2), \tag{30}$$

is the spherically symmetric member of this family, and indeed their representative, which could be easily shown to satisfy Eqs. (27) and (29). The axially and cylindrically symmetric members of the same family are given by^{4,23–25}

$$ds^2 = (1 - \Lambda z^2) c^2 dt^2 - (1 - \Lambda z^2)^{-1} dz^2 - \frac{1}{(1 + \frac{\Lambda}{4} \rho^2)^2} (d\rho^2 + \rho^2 d\phi^2), \tag{31}$$

and

$$ds^2 = \cos^{4/3} \left(\frac{\sqrt{3\Lambda}}{2} \rho\right) (dt^2 - dz^2) - d\rho^2 - \frac{4}{3\Lambda} \sin^2 \left(\frac{\sqrt{3\Lambda}}{2} \rho\right) \cos^{-2/3} \left(\frac{\sqrt{3\Lambda}}{2} \rho\right) d\phi^2, \tag{32}$$

respectively. It should be noted that the same approach could also be applied to dark fluids with $\rho_\Lambda < 0$, leading to the anti-de Sitter spacetime and its axially and cylindrically symmetric counterparts^{26,27}. Obviously apart from these 1-parameter solutions there are other solutions of (27)–(29) with two or more parameters. The simplest 2-parameter solution is the well-known Schwarzschild-de Sitter space which includes the mass parameter.

The two classes of solutions and their representative spacetimes considered in this section and in the previous one, namely Einstein static Universe and de Sitter model, share the property that both have a vanishing GM field in a fundamental observer’s frame. Born in the same year (1917), the two models of the universe had different fates. Einstein static universe turned to a case for pathological studies after Hubble’s discovery of the expansion of the universe, while the inflationary scenarios and the discovery of the accelerated expansion of the Universe in the present epoch, resurrected interest in the cosmological constant and de Sitter spacetime. Specifically, in the latter case, the cosmological constant is taken as the main candidate driving the repulsive gravity accounting for the unexpected observation. The final fate of a universe with matter and radiation diluted by an ever-expanding feature generated by a cosmological constant, would be a de Sitter universe²⁸.

Spacetimes without a gravitoelectric field E_g : the Gödel universe. Spacetimes with a gravitomagnetic field are stationary spacetimes and the *absence* of the gravitoelectric field requires a constant time-time component of the metric, i.e $h \equiv a^2 = constant$. Looking for cylindrically symmetric solutions (for a recent review on cylindrical gravitational fields refer to²⁹), these observations reduce the general form of the metric (in a cylindrically symmetric coordinate system) into¹,

$$ds^2 = a^2[dt + A(r)d\phi]^2 - d\rho^2 - e^{2K(r)} dz^2 - G(r)d\phi^2, \tag{33}$$

which has a gravitomagnetic field along the *z*-axis. Starting from Eqs. (17)–(19) and setting $E_g = 0$, we end up with the following equations;

$$\frac{1}{2} a^2 B_g^2 = 8\pi \Sigma_i \left(\frac{p_i + \rho_i}{1 - v_i^2} - \frac{\rho_i - p_i}{2} \right) \tag{34}$$

$$a \nabla \times (\mathbf{B}_g) = -16\pi \Sigma_i \left(\frac{p_i + \rho_i}{1 - v_i^2} \right) \mathbf{v}_i \tag{35}$$

$${}^{(3)}P^{\mu\nu} = \frac{1}{2} a^2 (B_g^\mu B_g^\nu - B_g^\mu \gamma^{\mu\nu}) + 8\pi \Sigma_i \left(\frac{p_i + \rho_i}{1 - v_i^2} v_i^\mu v_i^\nu + \frac{\rho_i - p_i}{2} \gamma^{\mu\nu} \right). \tag{36}$$

Lets try a single perfect fluid source with any linear barotropic EOS with constant pressure (density), excluding that of a dark-type ($p = -\rho = constant$), then Eqs. (34) and (35) are simultaneously satisfied, *only* in a *comoving* frame ($v = 0$), leading to a *uniform* and curl-free gravitomagnetic field. This includes for example stiff matter ($p = \rho = constant$), which when plugged into (35) leads to the following equations

$$B_g^2 = 32 \frac{\pi}{a^2} \rho_{SM} \tag{37}$$

$$\nabla \times (\mathbf{B}_g) = 0 \tag{38}$$

$${}^{(3)}P^{\mu\nu} = \frac{1}{2}a^2(B_g^\mu B_g^\nu - B_g^2 \gamma^{\mu\nu}), \tag{39}$$

in which, as mentioned, the first two equations refer to a *uniform* gravitomagnetic field. Indeed this form of a source matter, satisfying the last equation (39), will result in a solution which is the famous Gödel universe³⁰ in which the source of the spacetime is stiff matter in a comoving frame.

The one-component perfect fluid of the dark-type with EOS $p = -\rho = \text{constant}$, although satisfying Eqs. (34) and (35) for $\rho_\Lambda < 0$ ($\Lambda < 0$), is excluded as it will not lead to a solution of (36) which will take the form ${}^{(3)}P^{\mu\nu} = \frac{1}{2}a^2 B_g^\mu B_g^\nu + 16\pi \rho_\Lambda \gamma^{\mu\nu}$ (indeed one could show that equations for ${}^{(3)}P^{\rho\rho}$ and ${}^{(3)}P^{zz}$ lead to $\rho_\Lambda = 0$).

If on the other hand we insist on having a dark fluid component, as we have done so far, then we should look for a solution of the above equations with two perfect fluid sources namely,

$$\frac{1}{2}a^2 B_g^2 = 8\pi \left(\left(\frac{p_1 + \rho_1}{1 - v_1^2} - \frac{\rho_1 - p_1}{2} \right) + \left(\frac{p_2 + \rho_2}{1 - v_2^2} - \frac{\rho_2 - p_2}{2} \right) \right) \tag{40}$$

$$a \nabla \times (\mathbf{B}_g) = -16\pi \left(\frac{p_1 + \rho_1}{1 - v_1^2} \mathbf{v}_1 + \frac{p_2 + \rho_2}{1 - v_2^2} \mathbf{v}_2 \right) \tag{41}$$

$${}^{(3)}P^{\mu\nu} = \frac{1}{2}a^2(B_g^\mu B_g^\nu - B_g^2 \gamma^{\mu\nu}) + 8\pi \left(\left(\frac{p_1 + \rho_1}{1 - v_1^2} v_1^\mu v_1^\nu + \frac{\rho_1 - p_1}{2} \gamma^{\mu\nu} \right) + \left(\frac{p_2 + \rho_2}{1 - v_2^2} v_2^\mu v_2^\nu + \frac{\rho_2 - p_2}{2} \gamma^{\mu\nu} \right) \right). \tag{42}$$

To have a curl-free gravitomagnetic field, Eq. (41) invite us to choose, as in the case of the static universes discussed in “[Spacetimes without gravitoelectromagnetic fields \$E_g\$ and \$B_g\$: Einstein static universe](#)” section, a dust component (we note that unlike the case of static universes, here we are not allowed to choose incoherent radiation, as it will not be consistent with the cylindrical symmetry) in the comoving frame, plus a dark component ($p = -\rho$). These two sources substituted in the above equations lead to,

$$B_g^2 = 16 \frac{\pi}{a^2} \left(\frac{\rho_{dust}}{2} - \rho_\Lambda \right) \tag{43}$$

$$\nabla \times (\mathbf{B}_g) = 0 \tag{44}$$

$${}^{(3)}P^{\mu\nu} = \frac{1}{2}a^2(B_g^\mu B_g^\nu - B_g^2 \gamma^{\mu\nu}) + 8\pi \gamma^{\mu\nu} \left(\frac{\rho_{dust}}{2} + \rho_\Lambda \right). \tag{45}$$

Now if we choose the relation,

$$\rho_\Lambda = -\frac{\rho_{dust}}{2} = -\rho_{SM} < 0, \tag{46}$$

the above set of equations will be equivalent to the Eqs. (37)–(39), and consequently leads to the same solution which is the Gödel universe, given in the Cartesian coordinates as,

$$ds^2 = a^2(dt - e^x dy)^2 - a^2 dx^2 - \frac{a^2}{2} e^{2x} dy^2 - a^2 dz^2, \tag{47}$$

where $a^2 = -\frac{1}{2\Lambda}$. This is the form of the metric which was originally introduced by Gödel himself. The above form written already in the 1 + 3 form, clearly indicates a uniform gravitomagnetic field $\mathbf{B}_g = \frac{\sqrt{2}}{a^3} \hat{z}$. In terms of the cosmological constant it could be written as follows

$$ds^2 = (dT - e^{\sqrt{2|\Lambda|}X} dY)^2 - dX^2 - \frac{1}{2} e^{2\sqrt{2|\Lambda|}X} dY^2 - dZ^2, \tag{48}$$

showing clearly the flat space limit $|\Lambda| \rightarrow 0$. The metric (47) could also be written in the cylindrical coordinates of the form (33), as follows,

$$ds^2 = \left[dt - 2\sqrt{2}a \sinh^2 \left(\frac{r}{2a} \right) d\phi \right]^2 - dr^2 - dz^2 - a^2 \sinh^2 \left(\frac{r}{a} \right) d\phi^2. \tag{49}$$

This form clearly indicates the regular flat space behavior near the axis ($r \rightarrow 0$). Obviously in the second version of the spacetime source, we have a two-component fluid source including a dust component and a *negative density* dark fluid component (*negative* cosmological constant), where the corresponding densities satisfy the first equation in (46), or equivalently $\Lambda = -4\pi\rho_{dust}$. In other words in this second choice for the source of the spacetime, the requirement of having a dark fluid component, *automatically* results in a negative cosmological constant. It is also interesting that the relation between Λ and ρ_{dust} is just the *opposite* of what we had in the case of Einstein static universe.

The Gödel spacetime presents a homogeneous rotating model of a universe with a rigidly rotating fluid source, and as such is not a realistic model of our universe. On the other hand it contains very interesting properties, such as the existence of closed timelike curves, which makes it an important pedagogical example in the study of cosmological solutions.

Stationary spacetimes with non-vanishing E_g and B_g : de Sitter-NUT spacetime. Obviously keeping both fields E_g and B_g will leave us with more degrees of freedom, and specially one could look for *stationary* axially or cylindrically symmetric spaces. These are equivalent to the stationary, axially or cylindrically symmetric solutions of the Eqs. (17)–(19) with a single dark fluid source ($p_\Lambda = -\rho_\Lambda = \text{constant}$), which take the following forms,

$$\nabla \cdot \mathbf{E}_g = \frac{1}{2} h B_g^2 + E_g^2 + 8\pi \rho \quad (50)$$

$$\nabla \times (\sqrt{h} \mathbf{B}_g) = 2\mathbf{E}_g \times (\sqrt{h} \mathbf{B}_g) \quad (51)$$

$${}^{(3)}P^{\mu\nu} = -E_g^{\mu;\nu} + \frac{1}{2} h (B_g^\mu B_g^\nu - B_g^2 \gamma^{\mu\nu}) + E_g^\mu E_g^\nu + 8\pi \rho \gamma^{\mu\nu}. \quad (52)$$

The axisymmetric solutions of the above equations for both positive and negative densities (cosmological constant) have already been discussed extensively in the literature^{31,32}. Cylindrically symmetric cases are studied in^{33–35}. As expected, stationary exact solutions of the above equations contain a large family, so here, as in the previous sections, we only consider one specific solution as the family's representative. To have the simplest solution in terms of the number of parameters, we look for a 2-parameter axially symmetric solution of the above equations and that is the de Sitter-(pure)NUT solution, which in a Schwarzschild-type coordinate system is given by,

$$ds^2 = \frac{F(r)}{r^2 + l^2} (dt - 2l \cos \theta d\phi)^2 - \frac{r^2 + l^2}{F(r)} dr^2 - (r^2 + l^2) (d\theta^2 + \sin^2 \theta d\phi^2) \quad (53)$$

$$F(r) = r^2 - l^2 + \Lambda \left(l^4 - 2l^2 r^2 - \frac{r^4}{3} \right) \quad (54)$$

where for $l = 0$ it reduces to (anti-)de Sitter spacetime and for $\Lambda = 0$ to the pure NUT spacetime which is the spacetime of a massless gravitomagnetic monopole^{7,36}. Its gravitoelectromagnetic fields are given by

$$E_g^r = - \frac{r \left(\frac{\Lambda}{3} r^4 + 3\Lambda l^4 + \frac{2}{3} \Lambda r^2 l^2 - 2l^2 \right)}{(r^2 + l^2)^2} \quad (55)$$

$$B_g^r = - 2l \frac{F(r)^{1/2}}{(r^2 + l^2)^{3/2}}. \quad (56)$$

It is noted that despite the apparent axial symmetry of the spacetime metric, its gravitoelectromagnetic fields are spherically symmetric⁷. This interesting feature is also demonstrated in the scalar invariants of the space, for example in its Kreschmann invariant which is given by

$$K = \frac{8}{3(l^2+r^2)^6} (33l^{12}\Lambda^2 + \Lambda^2 r^{12} - 6l^{10}\Lambda(8 + 79\Lambda r^2) + 6l^2 r^6(-3 + \Lambda^2 r^4) + 9l^8(2 + 80\Lambda r^2 + 55\Lambda^2 r^4) - 6l^6 r^2(45 + 2\Lambda r^2(60 + \Lambda r^2)) + 3l^4 r^4(90 + \Lambda r^2(16 + 5\Lambda r^2))). \quad (57)$$

Obviously it reduces to the Kreschmann invariants for de Sitter ($l = 0$) and pure NUT ($\Lambda = 0$) spacetimes.

The NUT parameter l , also called NUT charge, is mainly interpreted as representing a gravitomagnetic monopole charge which is the gravitational analogue of a Dirac monopole⁷. Its observational consequences, mainly different gravitational lensing and microlensing patterns, are already discussed in the literature^{22,37}. Now the inclusion of the cosmological constant along with the NUT charge in the above solution, produces a cosmological solution which could be interpreted as the spacetime of a NUT hole in a de Sitter background, somewhat similar to the interpretation of the Schwarzschild-de Sitter solution as a black hole in the de Sitter background. This is an interesting solution which introduces a stationary cosmological model in the absence of any rotating fluid as a source.

Summary and discussion

We have shown that the simplest static and stationary single and two component perfect fluid solutions of Einstein field equations, which all include a dark component with EOS $p = -\rho$ (acting as a cosmological constant), could be categorized in terms of their gravitoelectromagnetic fields. Apart from the stationary de Sitter-NUT solution, all the other solutions share the same flat space limit as $|\Lambda| \rightarrow 0$. While the solutions with a double fluid source are given in the coordinate system comoving with the non-dark component, those with the single-component dark fluid are given in the non-comoving frames. We treated the cosmological term as a perfect (dark) fluid with EOS $p = -\rho$, because it is only in this way that one could justify and interpret the anisotropic feature of de Sitter-type solutions (31) and (32), in which Λ is the only parameter. When we transform to the

comoving frame, the anisotropic expansion in the dynamical form of these spacetimes is traced back to the dark fluid's 3-velocity, through which a preferred direction is inferred³.

To elaborate on this point, it is well known that the cosmological term Λg_{ij} in the left hand side of the EFE could be treated as a geometrical entity and interpreted as a constant curvature in the absence of matter. In the right hand side of the EFE it could be treated as part of the energy-momentum tensor, the so called dark energy. On the other hand for a perfect fluid source with the equation of state $p = -\rho$, the energy-momentum tensor $T_{ij} = (p + \rho)u_i u_j - p g_{ij}$ reduces to $T_{ij} = p g_{ij}$. But these two treatments, although leading to the same form of the energy-momentum tensor, are not equivalent. In other words one could not simply identify the geometric (cosmological constant) term Λg_{ij} with a perfect fluid with the EOS $p = -\rho$, on the basis that their contribution to the EFE is the same³⁸. By doing so we are ignoring the vital role of the fluid's 4-velocity in dictating anisotropic expansion in the corresponding de Sitter-type spacetimes³. Finally the above results could be summarized in the following table.

	$E_g = 0$	$E_g \neq 0$
$B_g = 0$	Einstein static universe $\Lambda = 4\pi\rho_{dust} > 0$ dust comoving frame	(anti-)de Sitter(-type) spacetimes $\Lambda < 0$ or $\Lambda > 0$ non-comoving frame
$B_g \neq 0$	Gödel universe $\Lambda = -4\pi\rho_{dust} < 0$ dust comoving frame	de Sitter (pure) NUT space $\Lambda < 0$ or $\Lambda > 0$ non-comoving frame

Data availability

All data generated or analyzed during this study are included in this published article.

Received: 27 March 2022; Accepted: 23 August 2022

Published online: 02 September 2022

References

- Stephani, H. *et al.* *Exact Solutions of Einstein's Field Equations* 2nd edn. (Cambridge University Press, 2003).
- Griffiths, J. B. & Podolský, J. *Exact Spacetimes in Einstein's General Relativity* (Cambridge University Press, 2009).
- Nouri-Zonoz, M., Koohbor, J. & Ramezani-Aval, H. Dark fluid or cosmological constant: Why there are different de Sitter-type spacetimes. *Phys. Rev. D* **91**, 063010 (2015).
- Rindler, W. Birkhoff's theorem with Λ -term and Bertotti-Kasner space. *Phys. Lett. A* **245**, 363 (1998).
- Griffiths, J. B. & Podolsky, J. The Linet-Tian solution with a positive cosmological constant in four and higher dimensions. *Phys. Rev. D* **81**, 064015 (2010).
- Landau, L. D. & Lifshitz, E. M. *The Classical Theory of Fields* (Pergamon, 1975).
- Lynden-Bell, D. & Nouri-Zonoz, M. Classical monopoles: Newton, NUT space, gravomagnetic lensing, and atomic spectra. *Rev. Mod. Phys.* **70**, 427 (1998).
- Gharechahi, R., Nouri-Zonoz, M. & Tavanafar, A. A tale of two velocities: Threading versus slicing. *Int. J. Geom. Meth. Mod. Phys.* **15**, 1850047 (2018).
- Nouri-Zonoz, M. & Parvizi, A. Papapetrou field as the gravitoelectromagnetic field tensor in stationary spacetimes. *Gen. Rel. Grav.* **48**, 37 (2016).
- Gharechahi, R., Koohbor, J. & Nouri-Zonoz, M. General relativistic analogs of Poisson's equation and gravitational binding energy. *Phys. Rev. D* **99**, 084046 (2019).
- Everitt, C. W. F. *et al.* The Gravity Probe B test of general relativity. *Class. Quantum Grav.* **32**, 224001 (2015).
- Adler, R. The three-fold theoretical basis of the Gravity Probe B gyro precession calculation. *Class. Quantum Grav.* **32**, 224002 (2015).
- Tolstoy, I. Gravitomagnetic and gravitoelectric waves in general relativity. *Int. J. Theor. Phys.* **40**, 1021–1031 (2001).
- Nouri-Zonoz, M. Gravitoelectromagnetic approach to the gravitational Faraday rotation in stationary spacetimes. *Phys. Rev. D* **60**, 024013 (1999).
- Nouri-Zonoz, M. & Nazari, B. Vacuum energy and the spacetime index of refraction: A new synthesis. *Phys. Rev. D* **82**, 044047 (2010).
- Nazari, B. & Nouri-Zonoz, M. Electromagnetic Casimir effect and the spacetime index of refraction. *Phys. Rev. D* **85**, 044060 (2012).
- Nouri-Zonoz, M. & Parvizi, A. Gaussian curvature and global effects: Gravitational Aharonov-Bohm effect revisited. *Phys. Rev. D* **88**, 023004 (2013).
- Besharat, A., Miri, M. & Nouri-Zonoz, M. Optical Aharonov-Bohm effect due to toroidal moment inspired by general relativity. *J. Phys. Commun.* **3**, 115019 (2019).
- Filipe, L., Costa, O. & Natario, J. Gravitoelectromagnetic analogies. *Gen. Rel. Grav.* **46**, 1792 (2014).
- Nouri-Zonoz, M. Spacetime of a line gravitomagnetic monopole. *Class. Quantum Grav.* **14**, 3123 (1997).
- Nouri-Zonoz, M. & Tavanafar, A. R. Plane-symmetric analogue of NUT space. *Class. Quantum Grav.* **18**, 4293 (2001).
- Nouri-Zonoz, M. & Lynden-Bell, D. Gravomagnetic lensing by NUT space. *Mon. Not. R. Astron. Soc.* **292**, 714–722 (1997).
- Nariai, H. On some static solutions of Einstein's gravitational field equations in a spherically symmetric case. *Sci. Rep. Tohoku Univ.* **34**, 160 (1950).
- Nariai, H. On a new cosmological solution of Einstein's field equations of gravitation. *Sci. Rep. Tohoku Univ.* **35**, 46 (1951).
- Bonnor, W. B. On Birkhoff's theorem. In *Recent Developments in General Relativity*, 167 (Pergamon Press, 1962).
- Linet, B. The static metrics with cylindrical symmetry describing a model of cosmic strings. *Gen. Rel. Grav.* **17**, 1109 (1985).
- Bonnor, W. B. A second anti-de Sitter universe. *Class. Quantum Grav.* **25**, 225005 (2008).
- Krauss, L. M. & Starkmann, G. D. Life, the universe, and nothing: Life and death in an ever-expanding universe. *Astrophys. J.* **531**, 22–30 (2000).
- Bronnikov, K., Santos, N. O. & Wang, A. Cylindrical systems in general relativity. *Class. Quantum Grav.* **37**, 113002 (2020).
- Gödel, K. An example of a new type of cosmological solutions of Einstein's field equations of gravitation. *Rev. Mod. Phys.* **21**, 447–450 (1949).

31. Plebański, J. F. & Demiański, M. Rotating, charged, and uniformly accelerating mass in general relativity. *Ann. Phys.* **98**, 98–127 (1976).
32. Podolsky, J. & Griffiths, J. B. A new look at the Plebanski-Demiański family of solutions. *Int. J. Mod. Phys. D* **15**, 335–69 (2006).
33. Krasinski, A. Solutions of the Einstein field equations for a rotating perfect fluid. Part 2. Properties of the flow-stationary and vortex-homogeneous solutions. *Acta Phys. Polon. B* **6**, 223 (1975).
34. Santos, N. O. Solution of the vacuum Einstein equations with non-zero cosmological constant for a stationary cylindrically symmetric spacetime. *Class. Quantum Grav.* **10**, 2401 (1993).
35. MacCallum, M. A. H. & Santos, N. O. Stationary and static cylindrically symmetric Einstein spaces of the Lewis form. *Class. Quantum Grav.* **15**, 1627 (1998).
36. Momeni, D., Nouri-Zonoz, M. & Ramazani-Arani, R. Morgan-Morgan-NUT disk space via the Ehlers transformation. *Phys. Rev. D* **72**, 064023 (2005).
37. Rahvar, S. & Nouri-Zonoz, M. Gravitational microlensing in NUT space. *Mon. Not. R. Astron. Soc.* **338**, 926–930 (2003).
38. Schmidt, H. On the de Sitter space-time—The geometric foundation of inflationary cosmology. *Fortschr. Phys.* **41**(3), 179–199 (1993).

Acknowledgements

M. N-Z thanks University of Tehran for supporting this project under the grants provided by the research council.

Author contributions

M.N-Z. proposed the idea, contributed to the calculations and wrote the paper. A.N-Z. contributed to the calculation and did the computation of the scalar invariants and helped in writing the paper.

Competing interests

The authors declare no competing interests.

Additional information

Correspondence and requests for materials should be addressed to M.N.-Z.

Reprints and permissions information is available at www.nature.com/reprints.

Publisher's note Springer Nature remains neutral with regard to jurisdictional claims in published maps and institutional affiliations.



Open Access This article is licensed under a Creative Commons Attribution 4.0 International License, which permits use, sharing, adaptation, distribution and reproduction in any medium or format, as long as you give appropriate credit to the original author(s) and the source, provide a link to the Creative Commons licence, and indicate if changes were made. The images or other third party material in this article are included in the article's Creative Commons licence, unless indicated otherwise in a credit line to the material. If material is not included in the article's Creative Commons licence and your intended use is not permitted by statutory regulation or exceeds the permitted use, you will need to obtain permission directly from the copyright holder. To view a copy of this licence, visit <http://creativecommons.org/licenses/by/4.0/>.

© The Author(s) 2022