



OPEN

Author Correction: Simulated proximity enhances perceptual and physiological responses to emotional facial expressions

Olena V. Bogdanova, Volodymyr B. Bogdanov, Luke E. Miller & Fadila Hadj-Bouziane

Correction to: *Scientific Reports* <https://doi.org/10.1038/s41598-021-03587-z>, published online 07 January 2022

The original version of this Article contained errors in Figure 1, where panel (B) was a duplication of panel (A). The original Figure 1 and accompanying legend appear below.

The original Article has been corrected.

Published online: 17 March 2022

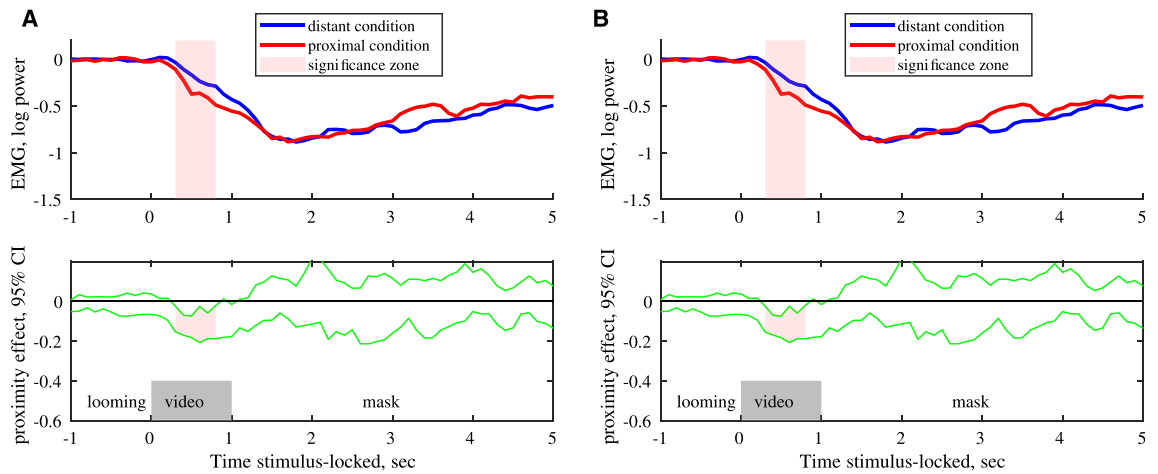


Figure 1. *Corrugator supercillii* activity during observation (A, $n = 41$) and imitation (B, $n = 36$) of happy faces. Upper row: the median of EMG activity for distant and proximal conditions. Lower row: 95% confidence intervals for effect of condition (proximal vs distant conditions). *Pale pink shadow* indicates clusters of data points with significant differences between proximal and distant conditions (A - $p < 0.001$ and B - $p < 0.05$ cluster level based on median bootstrap permutation test, $n = 1000$).



Open Access This article is licensed under a Creative Commons Attribution 4.0 International License, which permits use, sharing, adaptation, distribution and reproduction in any medium or format, as long as you give appropriate credit to the original author(s) and the source, provide a link to the Creative Commons licence, and indicate if changes were made. The images or other third party material in this article are included in the article's Creative Commons licence, unless indicated otherwise in a credit line to the material. If material is not included in the article's Creative Commons licence and your intended use is not permitted by statutory regulation or exceeds the permitted use, you will need to obtain permission directly from the copyright holder. To view a copy of this licence, visit <http://creativecommons.org/licenses/by/4.0/>.

© The Author(s) 2022