



OPEN

Author Correction: **^{18}F -fluorodeoxyglucose positron emission tomography–computed tomography for assessing organ distribution of stressed red blood cells in mice**

Wen-yu Yin, Jiao Yuan, Zhi-min Zhang, Cheng Mei, Wei Xu, Yong-xiang Tang, Fang Peng & Ning Li

Correction to: *Scientific Reports* <https://doi.org/10.1038/s41598-021-82100-y>, published online 28 January 2021

The original version of this Article contained an error in Figure 4, where panels 4A and 4B were interchanged.

The original Figure 4 and accompanying legend appear below. The original Article has been corrected.

Published online: 06 September 2021

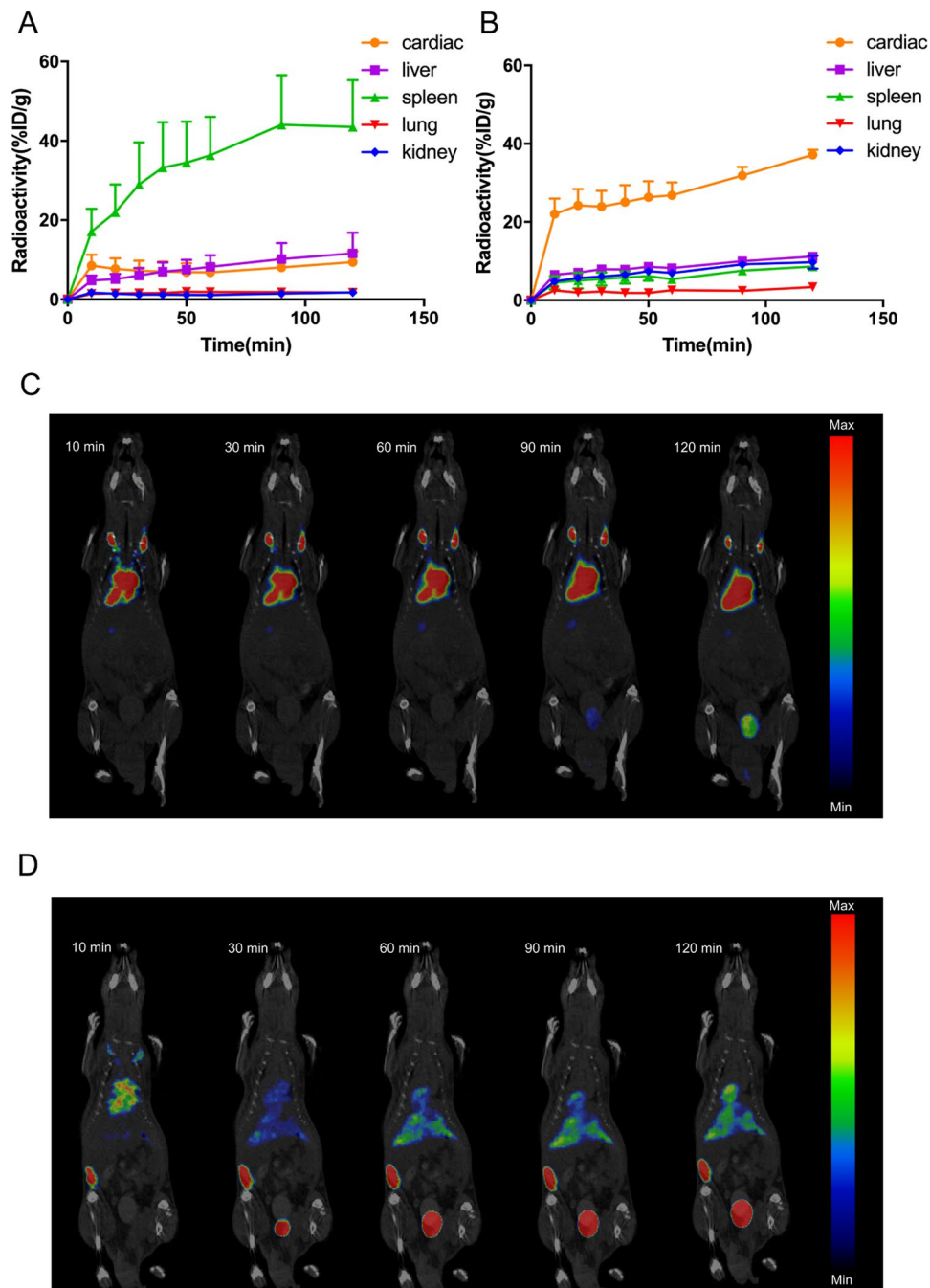


Figure 4. Stressed RBCs were trapped in spleen. **(A,B)** Time-activity curves of cardiac, liver, spleen, lung, and kidney of mice injected with ^{18}F -FDG-labelled untreated RBCs **(A)** and stressed RBCs **(B)** during PET/CT imaging for 120 min ($n=3$); **(C,D)** Representative serial images after intravenous injection for 120 min of ^{18}F -FDG-labelled untreated RBCs **(C)** and stressed RBCs **(D)**.

Open Access This article is licensed under a Creative Commons Attribution 4.0 International License, which permits use, sharing, adaptation, distribution and reproduction in any medium or format, as long as you give appropriate credit to the original author(s) and the source, provide a link to the Creative Commons licence, and indicate if changes were made. The images or other third party material in this article are included in the article's Creative Commons licence, unless indicated otherwise in a credit line to the material. If material is not included in the article's Creative Commons licence and your intended use is not permitted by statutory regulation or exceeds the permitted use, you will need to obtain permission directly from the copyright holder. To view a copy of this licence, visit <http://creativecommons.org/licenses/by/4.0/>.

© The Author(s) 2021