



OPEN

Effects of olanzapine treatment on lipid profiles in patients with schizophrenia: a systematic review and meta-analysis

Rong Li¹, Yiqi Zhang², Wenqiang Zhu², Chen Ding², Wenjie Dai³, Xin Su², Wen Dai², Jingmei Xiao⁴, Zhenhua Xing⁵ & Xiansheng Huang²✉

Olanzapine-induced dyslipidemia significantly increases the risk of cardiovascular disease in patients with schizophrenia. However, the clinical features of olanzapine-induced dyslipidemia remain hitherto unclear because of inconsistencies in the literature. This meta-analysis thus investigated the effects of olanzapine treatment on lipid profiles among patients with schizophrenia. Studies of the effects of olanzapine on lipids were obtained through the PubMed, Web of science, The Cochrane Library and Embase databases (up to January 1, 2020). Twenty-one studies and 1790 schizophrenia patients who received olanzapine therapy were included in our analysis. An olanzapine-induced increase was observed in plasma triglyceride (TG), total cholesterol (TC), and low-density lipoprotein cholesterol (LDL-C) levels in patients with schizophrenia (all $P < 0.05$). Moreover, the time points analyzed included the following: baseline, 4 weeks, 6 weeks, 8 weeks, 12 weeks, and ≥ 24 weeks (data of ≥ 24 weeks were integrated). The significant elevation of TG, TC, and LDL-C was observed in patients with schizophrenia already by 4 weeks of olanzapine therapy (all $P < 0.05$), with no obvious changes observed in high-density lipoprotein cholesterol (HDL-C) ($P > 0.05$). In conclusion, olanzapine-induced dyslipidemia, characterized by increased TG, TC, and LDL-C levels, was observed in patients with schizophrenia already by 4 weeks of olanzapine treatment.

Schizophrenia is a severe neuropsychiatric illness that threatens approximately 1% of the global population¹. High morbidity and mortality caused by dyslipidemia concomitant with cardiovascular disease (CVD) have been documented among patients with schizophrenia^{2,3}. It has been shown that olanzapine, a second-generation antipsychotic drug, is a major contributor to dyslipidemia among patients with schizophrenia⁴⁻⁶. However, the clinical features of olanzapine-induced dyslipidemia remain unclear because of inconsistent data among studies. Although some clinical randomized trials have reported increased serum triglyceride (TG) levels in schizophrenic patients on olanzapine therapy, the changes in total cholesterol (TC), high-density lipoprotein cholesterol (HDL-C), and low-density lipoprotein cholesterol (LDL-C) remain a matter of dispute⁷⁻¹¹.

Dyslipidemia is a well-established risk factor in the pathogenesis of CVD, including coronary heart disease (CAD), and acute coronary syndrome¹². In fact, it is thought to account for more than half of the worldwide cases of CAD. Importantly, high plasma TG and LDL-C levels and/or low serum HDL-C levels have been implicated in the pathophysiology of CVD¹³. Accordingly, understanding the characteristics of olanzapine-induced dyslipidemia is critical to the assessment and control of cardiovascular risk in schizophrenic patients. We therefore conducted a systematic review and meta-analysis of published literature to determine olanzapine-associated lipid profiles in patients with schizophrenia. In addition, we further analyzed the influence of clinical characteristics and treatment duration on olanzapine-induced dyslipidemia in patients with schizophrenia.

¹Department of Stomatology, The Second Xiangya Hospital, Central South University, Changsha, Hunan, China. ²Department of Cardiovascular Medicine, The Second Xiangya Hospital, Central South University, Changsha, Hunan, China. ³Department of Epidemiology and Health Statistics, Xiangya School of Public Health, Central South University, Changsha, Hunan, China. ⁴Department of Mental Health, The Second Xiangya Hospital, Central South University, Changsha, Hunan, China. ⁵Department of Emergency Medicine, The Second Xiangya Hospital, Central South University, Changsha, Hunan, China. ✉email: huangxiansheng@csu.edu.cn

Methods

Search strategy and study identification. This systematic literature review and meta-analysis was strictly subject to the Preferred Reporting Items for Systematic Reviews and Meta-Analyses (PRISMA) guidelines (see PRISMA Checklist in Supplementary table S1)¹⁴. We performed a comprehensive literature search in the following electronic databases to obtain eligible studies published by January 1, 2020: PubMed, Web of science, The Cochrane Library and Embase. The search terms were ['schizophrenia'] AND ['olanzapine'] AND ['dyslipidemias' OR 'triglycerides' OR 'cholesterol' OR 'cholesterol, LDL' OR 'cholesterol, HDL']. We also adopted Medical Subject Headings (MeSH) and related keywords in our analysis to increase the number of studies in our search. Moreover, a manual search of reference lists was undertaken for additional relevant articles. English was the only standard language that was applied in the search strategy. If relevant data of published studies were not available, we contacted the corresponding author(s) to obtain them via email.

Study selection. The inclusion and exclusion criteria of the obtained reports are described in reference to population, interventions, outcomes, and study design as follows.

Population. People with schizophrenia diagnosed according to the criteria outlined in the *Diagnostic and Statistical Manual of Mental Disorders—Fourth Edition* (DSM-IV), the *International Statistical Classification of Diseases and Related Health Problems—Tenth Revision* (ICD-10), or the *3rd edition of the Chinese Classification of Mental Disorders* (CCMD-3) (the diagnostic criteria commonly used in China). No limitations were defined by sex, race, or age. Women were excluded if they were planning to be pregnant or were undergoing pregnancy or lactation. Moreover, patients with chronic physical illness were also excluded, including those with atherosclerotic CVD, hepatic diseases, renal diseases, and diabetes.

Interventions. Only studies that administered olanzapine alone were considered. Moreover, all of the included studies were required to have provided detailed descriptions of the durations of administration. The dosage of olanzapine was further required to have been within the maximum dose range.

Outcomes. The mean and standard deviation (SD) of the plasma levels of TG, TC, LDL-C, and HDL-C at baseline and the end of olanzapine therapy. It's important to note that TG levels are susceptible to the quality of the meals slightly before bloodwork.

Study design. Randomized controlled clinical trials and cohort studies were included. Furthermore, other non-randomized controlled studies such as self-controlled studies concerning the effects of olanzapine on plasma lipids were also included. Indeed, not only schizophrenia itself may affect the metabolic state including blood lipid metabolism in patients, but the eating habits and exercise in each of individuals is quite different, hence, we conducted a single-arm meta-analysis rather than a pairwise meta-analysis of olanzapine against various control groups. We excluded studies that satisfied one of the following criteria: (1) non-clinical studies, such as animal, cell, genetic and drug metabolism studies; (2) unpublished papers, letters, case reports, reviews, and meta-analyses; (3) the full text not available; (4) the statistical methods were misapplied. A flow chart concerning the process of the identification, inclusion, and exclusion of studies is shown in Fig. 1.

Data extraction. Data from studies were entered in a pre-specified spreadsheet in Microsoft Excel 2019 and EndNote 8.1. The following details of patients were extracted from each of the included reports: (1) surname name of the first author and the year of publication; (2) institution and country of each study; (3) characteristics about the subjects, including mean age, body mass index (BMI), medication times, sample sizes of the olanzapine and control groups; (4) the plasma levels of TG, TC, LDL-C, and HDL-C at baseline and different time points of olanzapine treatment.

Quality assessment. The quality of each of the included studies was accessed and scored by two independent reviewers to determine the quality of participant selection, comparability, exposures, and outcomes. The methodological biases of the RCTs were judged according to the Cochrane criteria guidelines, and the researchers were required to make judgments of "yes", "no", and "unclear" for each evaluation item. Recommended by the Agency for Healthcare Research and Quality (AHRQ), the Newcastle–Ottawa Quality (NOS) Assessment Scale, was used to evaluate the quality of cohort studies¹⁵. We also integrated the methodological index for non-randomized studies (MINORS) in our investigation because of its suitability for evaluating the quality of self-controlled studies¹⁶. The MINORS is composed of 12 evaluation indices, each of which is awarded scores of 0–2 points: a score of 0 indicates unreported information; a score of 1, insufficiently reported information; and a score of 2, sufficiently reported information. Disagreements were discussed, and adjudication was resolved by a third reviewer.

Statistical analysis. The data pooled from the selected studies were divided into four groups on the basis of the main serum lipid components (TG, TC, LDL-C and HDL-C), and provided the data source for the primary results. Analysis of the relationship between olanzapine treatment duration and serum lipid changes was achieved from the integrated lipids data of different olanzapine intervention duration. Additionally, a potential source of heterogeneity in serum lipids can be the age of the patient. Indeed, numerous reports have concluded that as people age, their plasma lipid levels tend to also increase. Additionally, epidemiologic studies have shown that a greater proportion of the elderly population is dyslipidemic¹⁷. Hence, in order to avoid the confounding

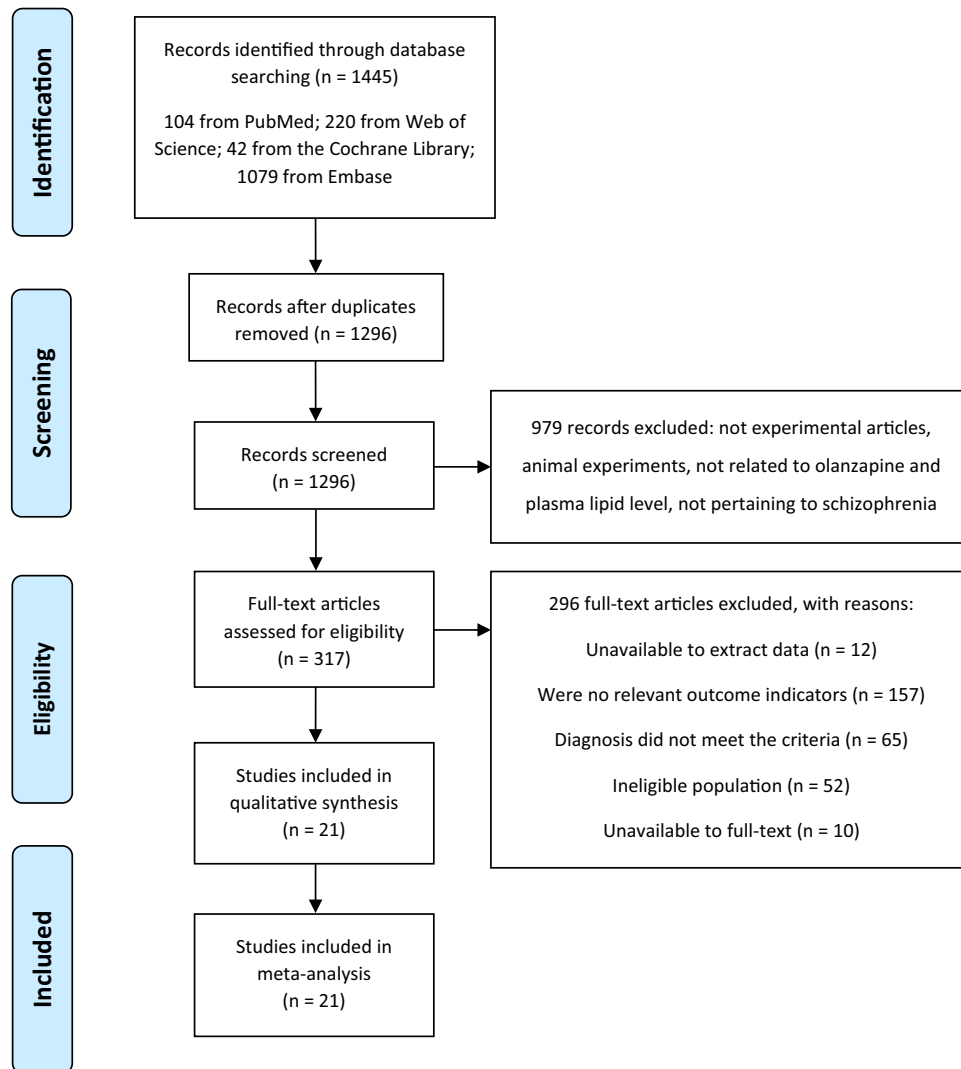


Figure 1. Flowchart of included and excluded reports. This flowchart summarizes the process of document retrieval and selection according to the inclusion criteria.

role of age in our assessment and determine the possible source of heterogeneity, we performed an age subgroup analysis as a function of time.

The effect size of the mean differences of TG, TC, LDL-C, and HDL-C between baseline and endpoint in schizophrenia patients was computed using weighted-mean difference (WMD). A forest plot using $\alpha = 0.05$ to indicate significance was generated to estimate the WMD and its 95% CI. Heterogeneity of the included studies was tested with the Q-statistic and quantified using $I^2 = 100\% \times [(Q - \text{degree of freedom})/Q]$. An I^2 of $> 50\%$ was considered to reflect significant statistical heterogeneity. The random-effects model using the inverse variance heterogeneity method was adopted with $I^2 > 50\%$ ¹⁸.

A sensitivity analysis was performed by excluding one study at a time to explore the sources of heterogeneity. Evidence of publication bias was assessed by a visual funnel plot and Egger's regression asymmetry test. Subgroup analysis was performed to detect the underlying sources of heterogeneity. All analytic processes were conducted with Stata-SE 15.1 statistical software (STATA Corp, College Station, TX, USA).

Results

Search results and study characteristics. Our initial search yielded 1445 studies from the PubMed, Web of Science, The Cochrane Library and Embase databases. Of these studies, 1424 articles were excluded on account of the following: (1) duplicated literature, (2) non-experimental literature, (3) animal experiments, (4) unavailability of the full text, (5) unrelated to olanzapine or plasma lipid levels, (6) unrelated to schizophrenia, and (7) unavailability of the originally relevant data (Fig. 1). All included studies were published in English. Our analysis thus included 21 studies and 1790 schizophrenia patients in the olanzapine arm. We also included the randomized open-label trial by Kusumi et al.¹⁹ to compare the effect of olanzapine orally disintegrating tablet and oral standard tablet on body weight and lipid metabolism in patients with schizophrenia. Since both arms

Study	Location	Randomization groups		No. of patients randomized	
		Treatment arm	Control arm	Treatment arm	Control arm
Berg, 2005 ⁵³	Europe and America	OLA	ZIP	204–215	196–203
Wu, 2006 ²¹	China	OLA	CLO/RIS/SUL	24	30/29/29
Kane, 2007 ⁵⁴	Europe and India	OLA		128	126/374
Saddichha, 2008 ⁵⁵	India	OLA	ZIP/HAL/HG	35	33/31/51
Kryzhanovskaya, 2009 ⁵⁶	USA and Russia	OLA		49	15
Bushe, 2010 ⁵⁷	Unclear	OLA	QUE	151	154
Narula, 2010 ⁵⁸	India	OLA	OLA + TOP	34	33
McDonnell, 2011 ²²	26 countries	OLA	OLA LI	448	265
Kusumi, 2012 ¹⁹	Japan	ODT	OST	45	40
Schreiner, 2012 ⁵⁹	15 countries	OLA	PAL	220	239
Hu, 2013 ⁶⁰	China	OLA	PAL	23	33
Ou, 2013 ⁸	China	OLA	ZIP	127	128
Modabbernia, 2014 ⁶¹	Iran	OLA	OLA + MEL	18	18
Zhang, 2014 ⁶²	China	OLA	QUE/ARI	50	50/50
Suresh, 2016 ⁶³	India	OLA	RIS	36	35
Chen, 2017 ²⁰	China	OLA	ZIP	19	19
Lin, 2018 ³⁸	China	OLA	HG	23	52
Tanaka, 2008 ⁵⁴	Japan	OLA	–	28	–
Chiu, 2010 ¹⁰	China	OLA	–	33	–
Gilles, 2010 ⁶⁵	Germany	OLA	–	14	–
Salviato Balbao, 2014 ⁹	Brazil	OLA	–	30	–

Table 1. Characteristics of the included studies. *OLA* olanzapine, *ODT* olanzapine orally disintegrating tablet, *ZIP* ziprasidone, *CLO* clozapine, *RIS* risperidone, *SUL* sulpiride, *PAL* paliperidone, *HAL* haloperidol, *HG* healthy group, *QUE* quetiapine, *TOP* topiramate, *OLA LI* olanzapine long-acting injection, *OST* oral standard tablet, *MEL* melatonin, *ARI* aripiprazole.

were treated with olanzapine, all patients were included in this meta-analysis. The main characteristics of these studies are listed in Tables 1 and 2.

Methodological quality of the included studies. We used the data extracted from the olanzapine arm (not included control arm) of 16 included RCTs. Our analysis, therefore, was primarily concerned with the bias resulting from the integrity of the lipid data at different time points and selective publication of lipid data inconsistent with the hypothesis. The only cohort study assessed medium quality according to NOS Assessment Scale, and most RCTs (94%) provided complete outcome data instead of selective data (Table 3). Moreover, four self-controlled studies provided sufficient information (Table 4). Thus, the quality of the included literature was generally high.

Primary outcomes. The random effect model pooled the WMD of lipid levels from the baseline to the termination of their respective study periods as follows: TG = 0.41 mmol/l (95% confidence interval [CI], 0.30 to 0.52; $P < 0.001$; $I^2 = 74.6%$; $n = 1569$; 21 studies), TC = 0.37 mmol/l (95% CI, 0.19 to 0.55; $P < 0.001$; $I^2 = 85.4%$; $n = 1185$; 18 studies), LDL-C = 0.14 mmol/l (95% CI, 0.04 to 0.24; $P = 0.005$; $I^2 = 49.6%$; $n = 1159$; 16 studies). All the WMD of TG, TC, and LDL-C featured significant heterogeneity. However, no obvious changes were observed in HDL-C (WMD = -0.02 mmol/l; Figs. 2, 3, 4, 5). Taken together, the analysis indicated that olanzapine-induced dyslipidemia is characterized by increases of TG, TC, and LDL-C and no changes in HDL-C.

Secondary outcomes-changes of lipid profiles depending on the duration of treatment. The effects of olanzapine intervention duration on lipid levels were further analyzed because the accumulation effect of the drug may influence the final detected serum lipid level. The time points analyzed included the following: baseline, 4 weeks, 6 weeks, 8 weeks, 12 weeks, and ≥ 24 weeks (data of ≥ 24 weeks were integrated).

The WMDs of plasma TG changes from baseline to the five end time points were as follows: 4 weeks = 0.57 mmol/l (95% CI, 0.28 to 0.87; $I^2 = 67.4%$), 6 weeks = 0.36 mmol/l (95% CI, 0.18 to 0.54; $I^2 = 39.7%$), 8 weeks = 0.48 mmol/l (95% CI, 0.30 to 0.66; $I^2 = 67.7%$), 12 weeks = 0.55 mmol/l (95% CI, 0.09 to 1.00; $I^2 = 92.3%$), and ≥ 24 weeks = 0.30 mmol/l (95% CI, 0.20 to 0.40; $I^2 = 0.0%$). All WMDs of the above TG changes were significant ($P < 0.05$ for all) (Table 5), showing that olanzapine therapy will increase plasma TG levels in patients with schizophrenia after 4 weeks and that this effect will persist across the remaining period of medication.

The WMDs of TC changes at 4, 6, 8 and 12 weeks were 0.34 mmol/l (95% CI, 0.10 to 0.58; $I^2 = 31.3%$), 0.36 mmol/l (95% CI, 0.19 to 0.54; $I^2 = 22.3%$), 0.44 mmol/l (95% CI, 0.19 to 0.69; $I^2 = 73.1%$), and 0.62 mmol/l (95% CI, 0.41 to 0.83; $I^2 = 0.0%$), respectively. All WMDs at the four end time points mentioned were significant

Study	Outcome indicators	BMI of treatment arm	Age	Duration of intervention	Design
Berg, 2005 ⁵³	TG/TC/LDL/HDL	–	40.10 ± 11.60	28 weeks	RCT
Wu, 2006 ²¹	TG/TC	20.65 ± 0.33	34.20 ± 10.30	8 weeks	RCT
Kane, 2007 ⁵⁴	TG/TC/LDL/HDL	25.5 ± 5.7	36.30 ± 11.20	6 weeks	RCT
Saddichha, 2008 ⁵⁵	TG/HDL	–	27.50 ± 5.90	6 weeks	RCT
Kryzhanovskaya, 2009 ⁵⁶	TG/TC/LDL/HDL	23.5 ± 4.6	16.10 ± 1.30	6 weeks	RCT
Bushe, 2010 ⁵⁷	TG/LDL/HDL	31.15 ± 7.00	41.67 ± 9.53	24 weeks	RCT
Narula, 2010 ⁵⁸	TG/TC/LDL/HDL	20.2 ± 3.92	31.00 ± 10.09	12 weeks	RCT
McDonnell, 2011 ²²	TG/TC/LDL/HDL	26.80 ± 5.00	38.90 ± 11.30	24 weeks	RCT
Kusumi, 2012 ¹⁹	TG/TC/HDL	–	44.30 ± 14.00 and 43.80 ± 12.90	48 weeks	RCT
Schreiner, 2012 ⁵⁹	TG/HDL	20.20 ± 3.92	37.50 ± 11.40	12, 24 weeks	RCT
Hu, 2013 ⁶⁰	TG/TC/LDL/HDL	21.54 ± 4.22	28.65 ± 7.14	4, 8 and 12 weeks	RCT
Ou, 2013 ⁸	TG/TC/LDL/HDL	20.69 ± 2.81	27.68 ± 8.04	6 weeks	RCT
Modabbernia, 2014 ⁶¹	TG/TC/LDL/HDL	23.2 ± 3.20	32.8 ± 8.2	4 and 8 weeks	RCT
Zhang, 2014 ⁶²	TG/TC/LDL/HDL	–	41.20 ± 13.30	8 weeks	RCT
Suresh, 2016 ⁶³	TC	–	41.50 ± 9.60	48 weeks	RCT
Chen, 2017 ²⁰	TG/TC/LDL	–	older than 60 years	4, 8 and 12 weeks	RCT
Lin, 2018 ³⁸	TG/TC/LDL/HDL	21.56 ± 2.72	30.17 ± 10.89	4 and 8 weeks	CS
Tanaka, 2008 ⁶⁴	TG/TC/LDL/HDL	22.20 ± 3.70	59.50 ± 10.00	8 and 16 weeks	SS
Chiu, 2010 ¹⁰	TG/TC/LDL/HDL	26.00 ± 3.80	37.60 ± 8.00	2, 4 and 8 weeks	SS
Gilles, 2010 ⁶⁵	TG/LDL/HDL	24.60 ± 4.40	29.00 ± 8.40	6 weeks	SS
Salviato Balbao, 2014 ⁹	TG/TC/LDL/HDL	24.40 ± 4.01	27.83 ± 8.34	4, 8, 36 and 48 weeks	SS

Table 2. Characteristics of the included studies. *TG* triglyceride, *TC* total cholesterol, *LDL* low-density lipoprotein cholesterol, *HDL* low-density lipoprotein cholesterol, *RCT* randomized controlled trial, *CS* cohort study, *SS* self-control study.

Source	Random sequence generation	Allocation concealment	Blinding	Incomplete outcome data	Selective reporting	Description of other bias
Berg, 2005 ⁵³	Unclear	Unclear	Low	Low	Unclear	
Wu, 2006 ²¹	Unclear	Unclear	High	Low	Low	
Kane, 2007 ⁵⁴	Low	Low	Low	Low	Low	
Saddichha, 2008 ⁵⁵	Unclear	Unclear	Low	Low	Low	
Kryzhanovskaya, 2009 ⁵⁶	Unclear	Unclear	Low	Low	Low	The strict inclusion criteria of this study may limit the generalizability of these results
Bushe, 2010 ⁵⁷	Low	Low	Low	Low	Low	Blood samples may have been taken in a non-fasting state during the study
Narula, 2010 ⁵⁸	Unclear	Unclear	Low	Low	Low	The dietary intake of the included patients were different
McDonnell, 2011 ²²	Low	Low	Low	Low	Low	
Kusumi, 2012 ¹⁹	Low	Low	Low	Low	Low	
Schreiner, 2012 ⁵⁹	Low	Low	High	Low	Low	
Hu, 2013 ⁶⁰	Low	Low	High	High	Low	The number of people lost may have an impact on the results
Ou, 2013 ⁸	Unclear	Unclear	High	Low	Low	
Modabbernia, 2014 ⁶¹	Unclear	Unclear	Low	Low	Low	
Zhang, 2014 ⁶²	Low	Unclear	Unclear	Low	Low	Not observing long enough; no nonmetabolism-related side effects were detected
Suresh, 2016 ⁶³	Low	Unclear	Low	Low	Low	
Chen, 2017 ²⁰	Low	Unclear	Low	Low	Low	The sample size is too small

Table 3. Assessment of quality of RCTs. The risk of bias is expressed as high, low and unclear; low = low risk; high = high risk; unclear = unclear risk

($P < 0.05$ for all). Interestingly, no significant changes were found at ≥ 24 weeks (WMD = 0.20 mmol/l; 95% CI = -0.04 to 0.44; $P = 0.10$; $I^2 = 66.2\%$) (Table 5).

For LDL-C, the significant WMDs were obtained at four end time points as follows: 4 weeks = 0.14 mmol/l (95% CI, 0.03 to 0.25; $I^2 = 1.8\%$), 6 weeks = 0.19 mmol/l (95% CI, 0.08 to 0.29; $I^2 = 0.0\%$), 8 weeks = 0.18 mmol/l

Methodological items	Tanaka, 2008 ⁶⁴	Chiu, 2010 ¹⁰	Gilles, 2010 ⁶⁵	Salviato Balbao, 2014 ⁹
A clearly stated aim	2	2	2	2
Inclusion of consecutive patients	1	1	1	1
Prospective collection of data	2	2	2	2
Endpoints appropriate to the aim of the study	2	2	1	2
Unbiased assessment of the study endpoint	2	2	2	2
Follow-up period appropriate to the aim of the study	0	1	1	1
Loss to follow up less than 5%	2	0	2	2
Prospective calculation of the study size	0	0	0	0
Total score	11	10	11	12

Table 4. Assessment of quality of non-randomized studies. The items are scored 0 (not reported), 1 (reported but inadequate) or 2 (reported and adequate); the ideal score being 16 for non-comparative studies.

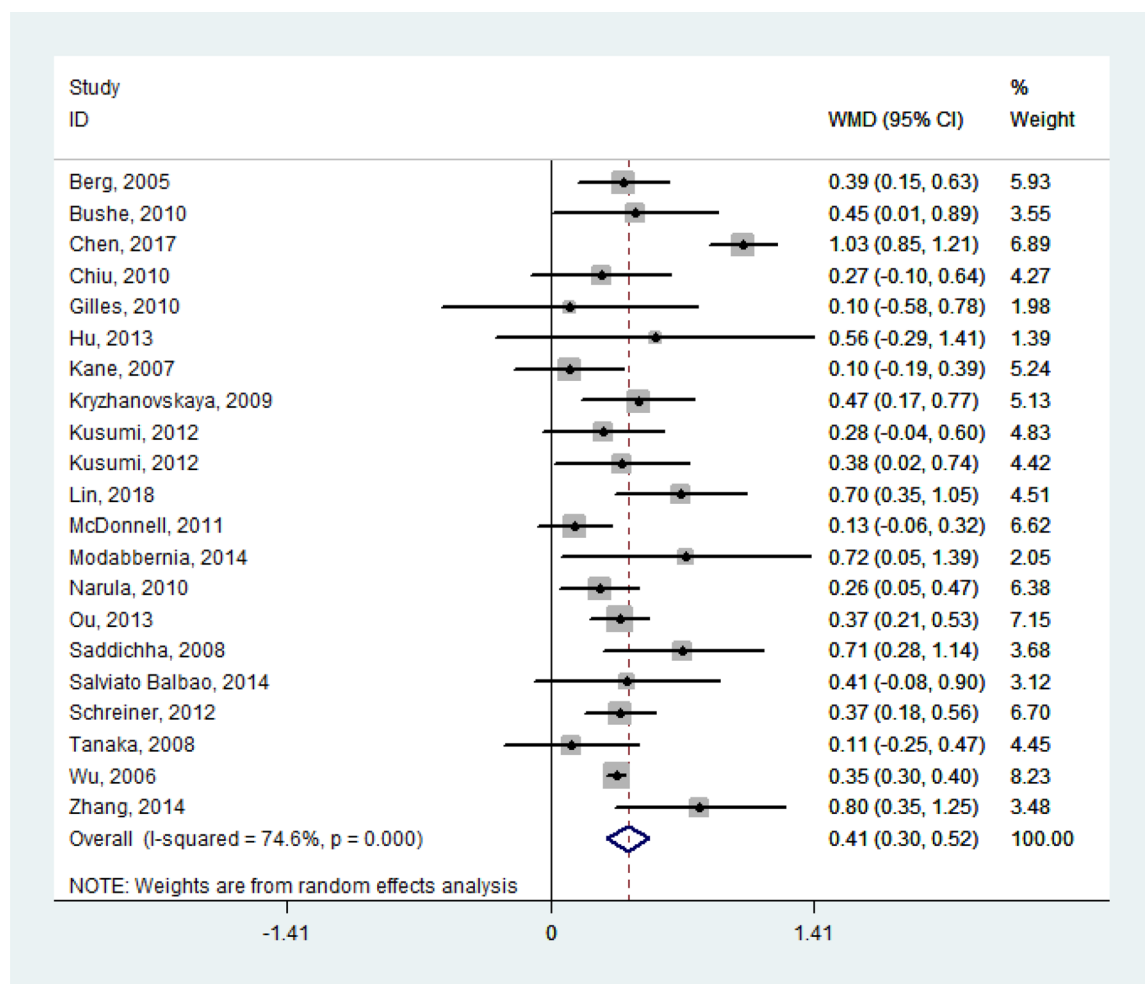


Figure 2. Forest plot and meta-analysis of olanzapine's effects on TG. WMD weighted-mean difference; CI confidence interval.

(95% CI, 0.07 to 0.29; $I^2 = 8.1\%$), and 12 weeks = 0.39 mmol/l (95% CI, 0.21 to 0.56; $I^2 = 0.0\%$) ($P < 0.05$ for all). Interestingly, similar to the data concerning TC, no significant LDL-C changes were found at ≥ 24 weeks (WMD = -0.02 mmol/l; 95% CI, -0.17 to 0.13; $P = 0.81$; $I^2 = 31.0\%$) (Table 5).

As shown in Table 5, the WMDs of HDL-C at all end time points were as follows: 4 weeks = -0.02 mmol/l (95% CI, -0.09 to 0.05; $I^2 = 0.0\%$), 6 weeks = 0.01 mmol/l (95% CI, -0.06 to 0.08; $I^2 = 31.5\%$), 8 weeks = -0.03 mmol/l (95% CI, -0.13 to 0.07; $I^2 = 61.5\%$), 12 weeks = -0.00 mmol/l (95% CI, -0.05 to 0.05; $I^2 = 0.0\%$), and ≥ 24 weeks = -0.03 mmol/l (95% CI, -0.06 to 0.00; $I^2 = 0.0\%$). Of note, no significant changes in HDL-C were found after olanzapine treatment ($P > 0.05$ for all).

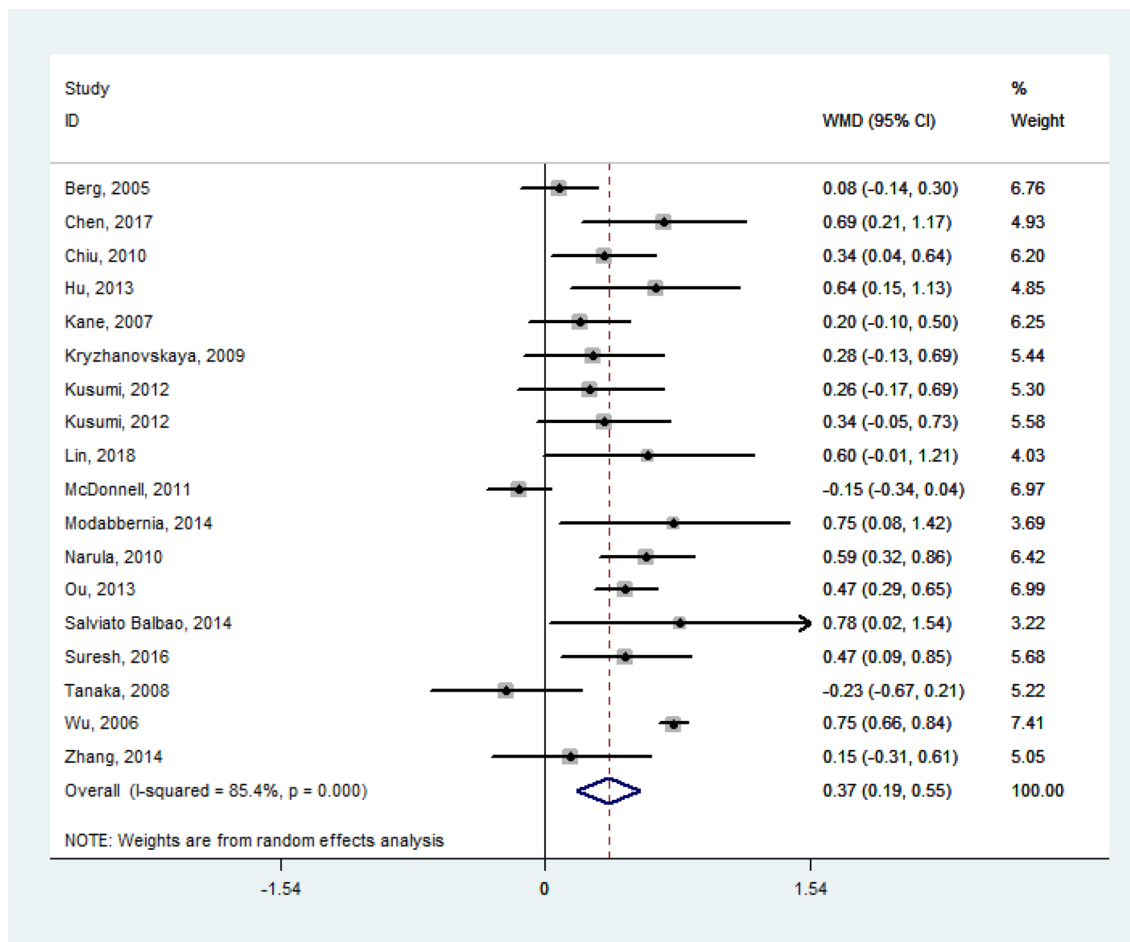


Figure 3. Forest plot and meta-analysis of olanzapine's effects on TC. WMD weighted-mean difference; CI confidence interval.

Subgroup analysis according to age. Considering the potential heterogeneity among included studies, an age subgroup analysis was performed (Table 6). The age subgroup analysis was only conducted in groups with an I^2 of $\geq 50\%$. Meta-analyses could not be conducted in subgroups for which data from only one study was available. The WMD of TG changes from baseline to 12 weeks among patients with schizophrenia (mean age < 40 years) was 0.30 mmol/l (95% CI, 0.16 to 0.45; $I^2 = 0.0\%$). For HDL-C, the WMD was 0.02 mmol/l (95% CI, -0.05 to 0.09; $I^2 = 0.0\%$) in patients with schizophrenia (mean age < 40 years) that had undergone an 8-week olanzapine intervention. The groups including TG at 4 weeks, 8 weeks, TC at 8 weeks, and TC ≥ 24 weeks with an I^2 that exceeded 50% after age subgroup analyses required further analysis (see "Sensitivity analysis and potential sources of heterogeneity").

Our findings suggest that the age of the patients is an important characteristic in determining the effects of olanzapine on TG and HDL-C. However, we could not analyze the magnitude of the variations in serum lipids and therefore, could not establish a link between the magnitude of the change in serum lipids and the age of the patients from this meta-analysis.

Sensitivity analysis and potential sources of heterogeneity. A sensitivity analysis was required to identify the sources of heterogeneity in our findings. Our analysis revealed that the studies by Chen et al.²⁰, Wu et al.²¹ and McDonnell et al.²² were the main causes of heterogeneity (Supplementary Figure S1, S2, S3 and S4) and their exclusion effectively removed or decreased the variations (TG at 4 weeks: $I^2 = 17.2\%$; TG at 8 weeks: $I^2 = 59.4\%$; TC at 8 weeks: $I^2 = 35.4\%$; TC ≥ 24 weeks: $I^2 = 20.5\%$). Notably, the stability of our results was substantiated by the consistency of the statistical significance obtained after their exclusion (TG at 4 weeks: $P < 0.001$; TG at 8 weeks: $P < 0.001$; TC at 8 weeks: $P = 0.002$). Finally, the P value of TC ≥ 24 weeks group changed to 0.005 (statistically significant) after the exclusion, revealing that the accuracy of the results in the study of McDonnell et al.²² was debatable.

Publication bias. Most studies were located within the 95% CIs of a symmetrical distribution (Fig. 6). In addition, P values for the Egger tests were > 0.05 , indicating no significant publication bias.

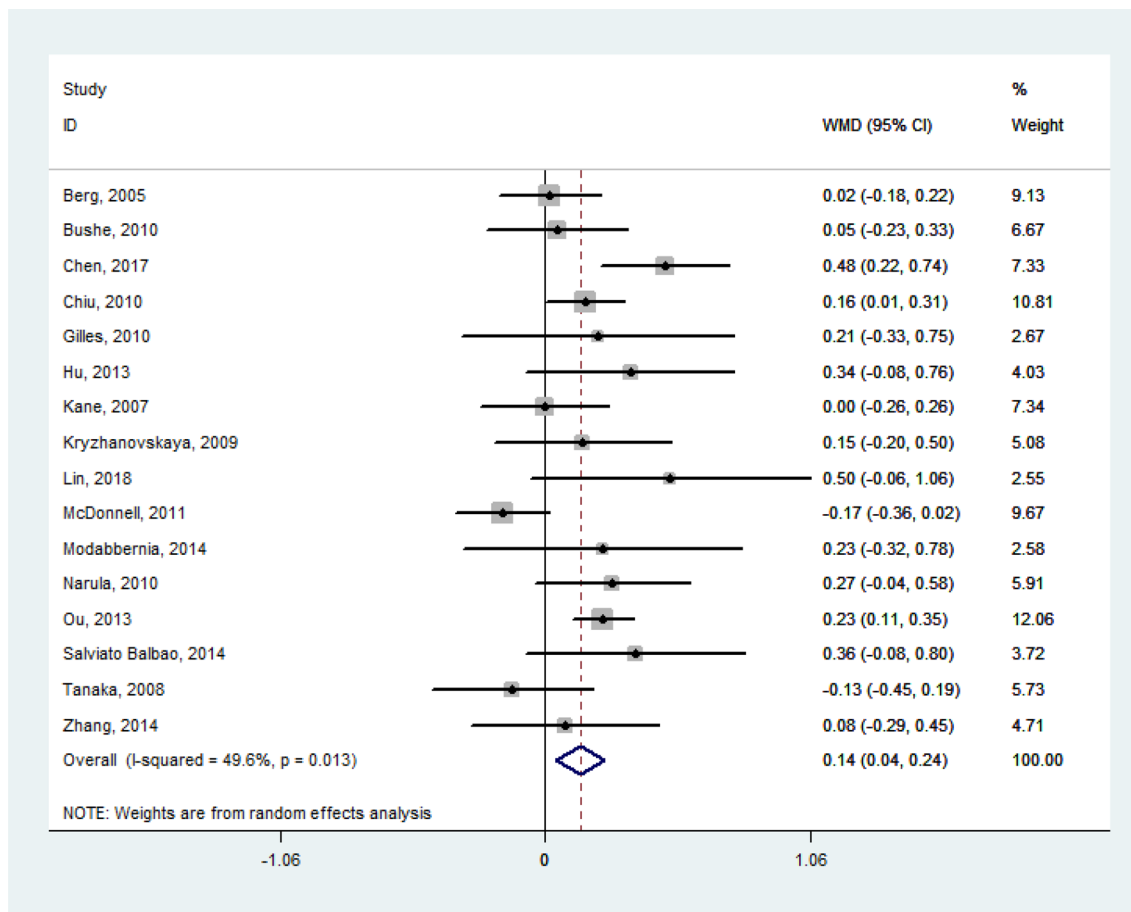


Figure 4. Forest plot and meta-analysis of olanzapine's effects on LDL-C. WMD weighted-mean difference; CI confidence interval.

Discussion

In this current meta-analysis of 21 studies on the effects of olanzapine on lipid profiles in patients with schizophrenia, we demonstrated that the clinical features of dyslipidemia were characterized by an elevation of TG, TC, and LDL-C, with no significant changes in HDL-C. Furthermore, we analyzed the effects of the duration of olanzapine treatment on lipid profiles in patients with schizophrenia, revealed that 4 weeks of olanzapine treatment resulted in abnormal serum lipid levels. Even if the duration of olanzapine-therapy was prolonged, the effect of olanzapine on modulating serum levels of lipid could persist synchronously.

Interestingly, following the exclusion of the findings by McDonnell et al.²², there was a significant increase in TC level in the TC \geq 24 weeks group ($P = 0.005$). A review of the research revealed significant decreases in the mean fasting serum TC levels from baseline to end point²². The conclusion of McDonnell's group might be debatable because the long-term diet control was not discussed in the study, and its design included an acute period of stabilization on oral olanzapine before random assignment to therapy²². Meanwhile, there were no significant changes in the LDL-C levels after 24-week treatment. We postulate that it might be due to the variations in the sample sizes, ethnicities, and clinical characteristics of the populations in the selected studies. Alternately, the return to baseline levels could have been caused by some form of tolerance to olanzapine. Moreover, the studies were found to have relatively significant heterogeneity ($I^2 \geq 50\%$ and $P < 0.05$) in TG, TC and LDL-C but not HDL-C ($I^2 = 36.3\%$, $P = 0.058$). The heterogeneity could partly be explained by the different age groups included as a decrease in heterogeneity was observed after age subgroup analyses. Other sources of heterogeneity could be the discordant measurements and results between different studies, resulting in impaired validity of the conclusions. Nevertheless, no publication bias of the literature was detected, further suggesting that the heterogeneity did not result from publication bias. To the best of our knowledge, previous meta-analyses mostly focused on lipid comparison between different antipsychotics, this is the first meta-analysis to investigate the correlation of olanzapine and dyslipidemia in patients with schizophrenia, especially the effect of olanzapine intervention duration on lipid metabolism. Our findings could contribute to the monitoring and management of dyslipidemia in patients with schizophrenia undergoing olanzapine treatment.

Currently, growing evidence suggests that olanzapine treatment can promote several cardio-metabolic disorders such as dyslipidemia in schizophrenic patients, contributing to markedly shorter longevities as compared to the general population²³. In the first published cases of olanzapine-associated hypertriglyceridemia, Sheitman et al.²⁴ followed nine patients on olanzapine for an average of 16 months and observed an increase in serum TG from the baseline mean of 170 mg/dl (range 25–200 mg/dl) to the mean of 240 mg/dl (range 135–369 mg/dl),

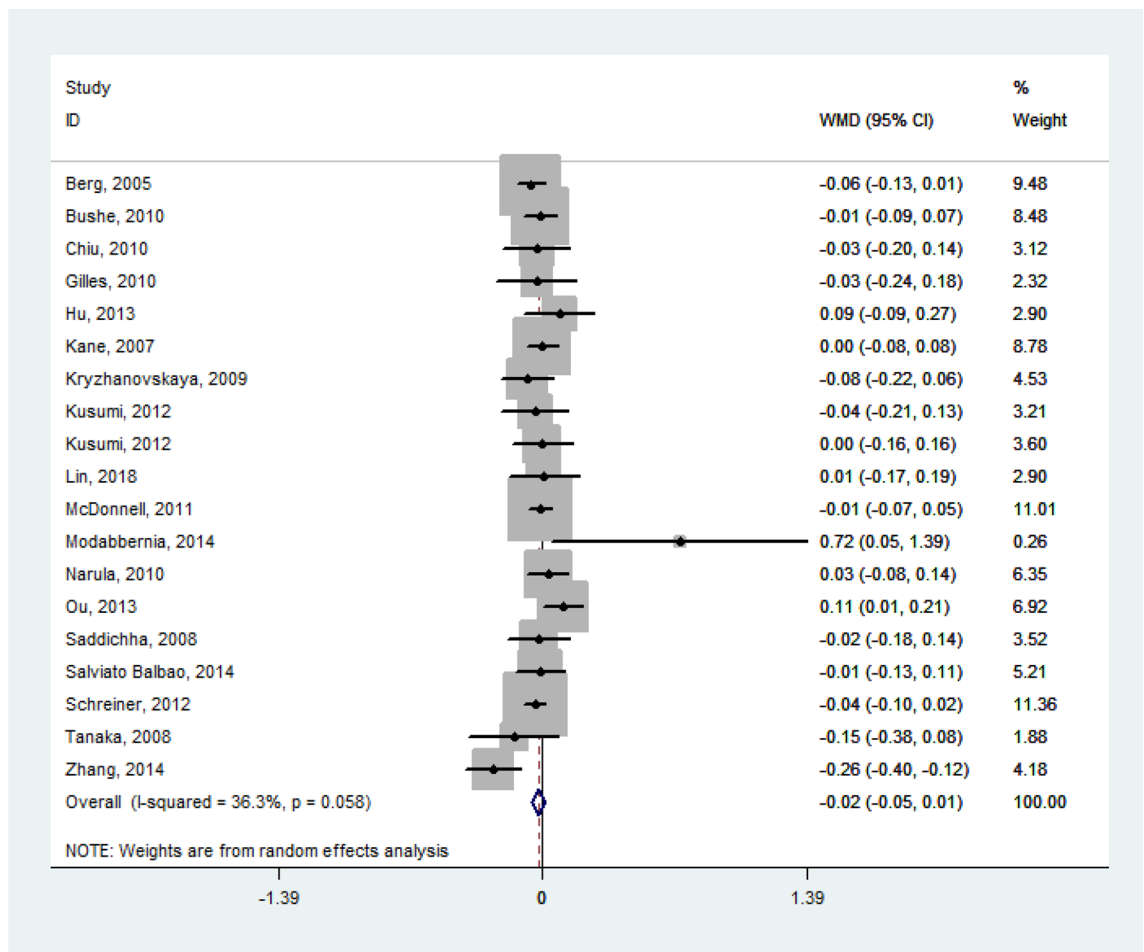


Figure 5. Forest plot and meta-analysis of olanzapine's effects on HDL-C. WMD weighted-mean difference; CI confidence interval.

with five patients sustaining > 50% increase in serum TG. Further research associated olanzapine with a roughly five-time increased risk of developing hyperlipidemia as compared with no antipsychotic exposure²⁵. As the role of dyslipidemia in CVD development has been well-documented, the increased risk of CVD attributed to olanzapine-induced dyslipidemia is likewise clear¹²: with each 1 mmol/l increase in TG, the risk of CVD increases by \approx 12% and 37% in men and women, respectively²⁶. Furthermore, a meta-analysis of 90,056 individuals in 14 randomized trials showed that each 1 mmol/L drop of LDL-C reduces the risk of CVD by 23%²⁷. The WMD of lipid levels from the baseline to endpoint were 0.41 mmol/l of TG, 0.37 mmol/l of TC, and 0.14 mmol/l of LDL-C, respectively. These figures stress the importance of managing olanzapine-induced dyslipidemia especially TG and LDL-C in patients with schizophrenia to the prevention of CVD in this population²⁸. Besides, the fibrates and the statins are recommended to effectively control the TG and LDL-C levels, which may be also used to treat olanzapine-associated hypertriglyceridemia and reduce the plasma level of LDL-C. Therefore, it has been well-established that olanzapine treatment—specifically, olanzapine-induced dyslipidemia—contributes to high cardiovascular risk among patients with schizophrenia^{7,29}.

Notably, regular lipid monitoring and physical health care for schizophrenic patients are usually suboptimal and may contribute to the high prevalence of CVD and increased mortality^{30,31}. However, to date, the clinical features of olanzapine-induced dyslipidemia have remained controversial because of inconsistent data between studies^{7–11}. In an early study, Osser et al. observed an elevation of plasma TG levels after olanzapine treatment³². The CATIE Schizophrenia Trial observed higher TG levels in patients with schizophrenia who were treated with olanzapine for 3 months than in those treated with ziprasidone³³. This finding is supported by two recent studies that have also demonstrated an olanzapine-induced elevation of TG in patients with schizophrenia^{34,35}. However, the data about the effects of olanzapine on plasma cholesterol (TC, HDL-C and LDL-C) levels were inconsistent. A meta-analysis in 2010 observed an increase of TC after olanzapine treatment³⁶, but no significant TC elevation was shown in another meta-analysis of 18 studies³⁷. Additionally, the data obtained from Chinese populations of individuals with schizophrenia also remain controversial. The studies by Lin et al.³⁸ and Chiu et al.¹⁰ revealed that olanzapine increased TC and LDL-C in this population, with no obvious changes in HDL-C^{10,38}. By contrast, no effects of olanzapine on TC and LDL-C were found by Huang et al.⁷. Concerning HDL-C, Ou et al. observed an increase after olanzapine therapy⁸, whereas an olanzapine-induced reduction of HDL-C was detected in another study¹¹. Our meta-analysis demonstrates that olanzapine-induced dyslipidemia is characterized by elevations of TG, TC, and LDL-C, with no significant changes in HDL-C.

Secondary outcomes	Studies, no	Subjects, no	WMD	95% CI	p value	Study heterogeneity				
						X ²	df	I ² , %	p value	
TG	4 weeks	6	146	0.57	0.28, 0.87	0.000	15.36	5	67.40%	0.009
	6 weeks	5	351	0.36	0.18, 0.54	0.000	6.64	4	39.70%	0.000
	8 weeks	10	278	0.48	0.30, 0.66	0.000	27.86	9	67.70%	0.001
	12 weeks	4	296	0.55	0.09, 1.00	0.019	39.05	3	92.30%	0.000
	≥ 24 weeks	7	966	0.30	0.20, 0.40	0.000	4.65	6	0.00%	0.590
TC	4 weeks	6	146	0.34	0.10, 0.58	0.006	7.28	5	31.30%	0.201
	6 weeks	3	302	0.36	0.19, 0.54	0.000	2.57	2	22.30%	0.276
	8 weeks	9	248	0.44	0.19, 0.69	0.001	29.78	8	73.10%	0.000
	12 weeks	3	76	0.62	0.41, 0.83	0.000	0.14	2	0.00%	0.935
	≥ 24 weeks	6	631	0.20	- 0.04, 0.44	0.095	14.79	5	66.20%	0.011
LDL	4 weeks	6	146	0.14	0.03, 0.25	0.014	5.09	5	1.80%	0.405
	6 weeks	4	312	0.19	0.08, 0.29	0.000	2.58	3	0.00%	0.461
	8 weeks	8	224	0.18	0.07, 0.29	0.001	7.62	7	8.10%	0.368
	12 weeks	3	76	0.39	0.21, 0.56	0.000	1.10	2	0.00%	0.578
	≥ 24 weeks	4	619	- 0.02	- 0.17, 0.13	0.810	4.35	3	31.00%	0.226
HDL	4 weeks	5	127	- 0.02	- 0.09, 0.05	0.514	1.32	4	0.00%	0.858
	6 weeks	5	349	0.01	- 0.06, 0.08	0.772	5.84	4	31.50%	0.212
	8 weeks	6	177	- 0.03	- 0.13, 0.07	0.567	12.97	5	61.50%	0.024
	12 weeks	3	277	- 0.00	- 0.05, 0.05	0.952	1.69	2	0.00%	0.429
	≥ 24 weeks	7	957	- 0.03	- 0.06, 0.00	0.069	1.56	6	0.00%	0.955

Table 5. Meta-analysis of secondary outcomes of different intervention times. *WMD* weighted mean difference, *df* degrees of freedom, *CI* confidence interval.

Subgroup outcomes	Studies, no	Subjects, no	WMD	95% CI	p value	Study heterogeneity			
						X ²	df	I ² , %	p value
TG—4 weeks (age < 40)	5	127	0.51	0.16, 0.86	0.004	9.48	4	57.80%	0.050
TG—8 weeks (age < 40)	6	151	0.37	0.29, 0.45	0.000	5.21	5	4.10%	0.390
TG—8 weeks (age ≥ 40)	4	127	0.53	0.12, 0.94	0.012	15.34	3	80.40%	0.002
TG—12 weeks (age < 40)	3	277	0.30	0.16, 0.45	0.000	0.57	2	0.00%	0.751
TC—8 weeks (age < 40)	6	151	0.62	0.43, 0.80	0.000	7.38	5	32.30%	0.194
TC—8 weeks (age ≥ 40)	3	97	0.15	0.09, 1.51	0.516	5.59	2	64.20%	0.061
TC—≥ 24 weeks (age < 40)	2	295	0.19	- 0.62, 0.99	0.653	4.36	1	77.10%	0.037
TC—≥ 24 weeks (age ≥ 40)	4	336	0.27	0.05, 0.42	0.011	3.63	3	17.40%	0.304
HDL—8 weeks (age < 40)	5	127	0.02	- 0.05, 0.09	0.615	1.48	4	0.00%	0.831

Table 6. Meta-analysis of subgroup according to age. Subgroups were divided according to age over 40 years or not. *WMD* weight mean difference, *df* degrees of freedom, *CI* confidence interval.

Our study also characterized the influence of olanzapine on serum lipids after 4 weeks of treatment and may be beneficial clinically to monitor the plasma lipid levels in a timely manner and help guide appropriate interventions if necessary. Of note, two studies concluded that TG levels increased significantly after 2–3 weeks of olanzapine treatment and found the increase in TG levels to occur before the weight gain and other lipid levels changes^{7,39}. However, their relatively small sample sizes of 13 and 15 patients, make it difficult to generalize their findings to a broader clinical population of patients on olanzapine. More extensive studies will be required to validate the findings.

While the mechanism of olanzapine-induced dyslipidemia remains unknown, several factors have been implicated. First, olanzapine antagonizes the 5-hydroxytryptamine and histamine H1 receptors in the hypothalamus^{40,41}, and promotes adenosine monophosphate activated protein kinase (AMPK) phosphorylation in the central nervous system⁴². This in turn results in increased food intake, dyslipidemia and obesity⁴³. Dyslipidemia may be a secondary reaction to olanzapine-induced weight gain or obesity. Our study only revealed changes in four lipid parameters and did not explore the relationship between lipid profile and body weight. More studies such as meta-analyses or large-scale clinical trials could be conducted to discuss this issue in the future. Besides, the concentrations of circulating leptin and ghrelin were also significantly increased in schizophrenic patients on olanzapine and correlated with increased food intake^{44,45}. Second, olanzapine-induced insulin resistance inhibits the activity of lipoprotein lipase, thereby slowing the catabolism of LDL and increasing plasma

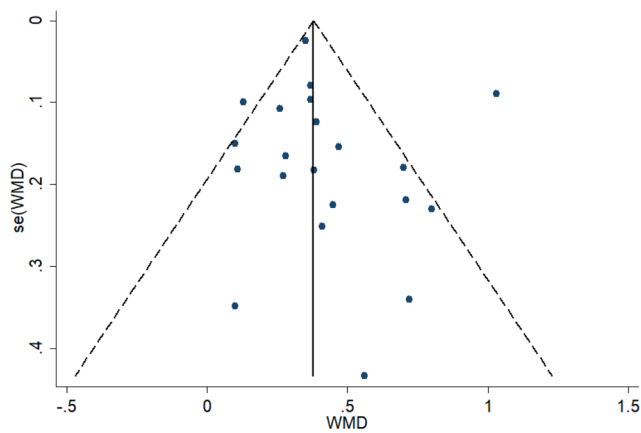


Fig. 6a-TG

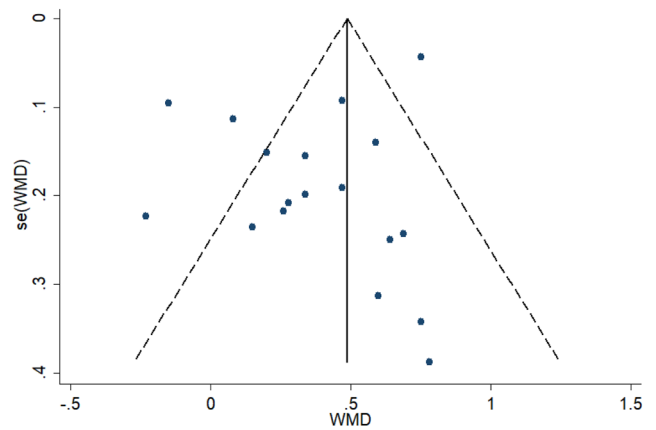


Fig. 6a-TC

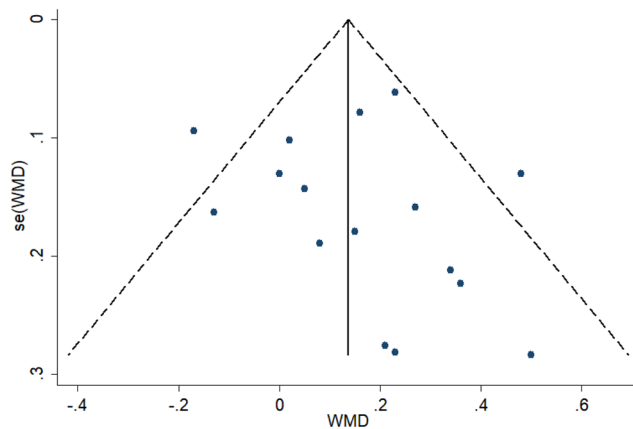


Fig. 6a-LDL-C

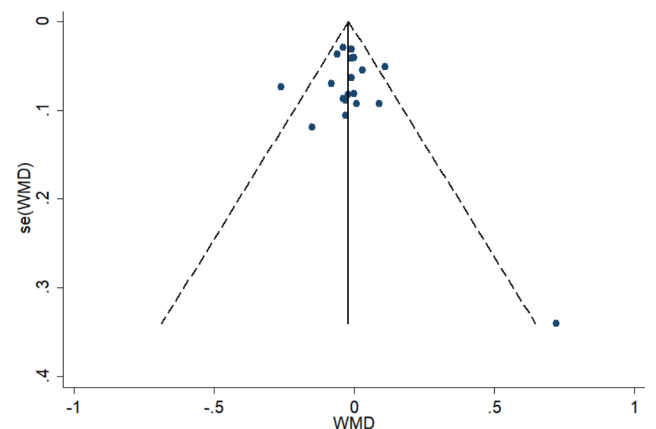


Fig. 6a-HDL-C

Figure 6. Funnel plots illustrating the publication bias of the four groups of different lipid components. WMD weighted mean difference; *se* standard error.

LDL-C levels^{46,47}. In addition, insulin resistance stimulates sterol regulatory element binding protein-1c (SREBP-1c), which enhances the production of very low density lipoprotein in the liver and consequently increases plasma TG levels^{48,49}. Third, the molecular mechanisms underlying olanzapine-associated lipid dysregulation are partly understood. Olanzapine enhances lipogenesis directly in the liver by regulating the expression of AMPK, SREBP-1c or peroxisome proliferation-activated receptor in the liver and disturbing the transcription of genes regulating lipid metabolism^{50–52}.

Of note, this meta-analysis is subject to several limitations. First, the variance in the reagents and instruments for lipid measurement used among the included studies contributed to heterogeneity. Second, the inclusion of several studies with small samples might impair the authority of our conclusions. Third, this manuscript was marred by currently inefficient resource sharing.

Conclusion

The present analysis demonstrated that olanzapine-induced dyslipidemia in patients with schizophrenia is characterized by elevated plasma TG, TC, and LDL-C levels, with no significant changes in HDL-C. Dyslipidemia always occurs already by 4 weeks of treatment and, to some extent, exhibits a time-dependent effect. Hence, there is an urgent need for physicians to manage olanzapine-induced dyslipidemia in patients with schizophrenia to prevent the development of CVD in this population. However, a more comprehensive meta-analysis, with unlimited access to the literature, will be required to validate our findings. In addition, further long-term studies that allow the use of lipid-lowering medications upon the emergence of hyperlipidemia will be needed.

Received: 29 April 2020; Accepted: 7 September 2020

Published online: 12 October 2020

References

- Owen, M. J., Sawa, A. & Mortensen, P. B. Schizophrenia. *Lancet* **388**, 86–97. [https://doi.org/10.1016/s0140-6736\(15\)01121-6](https://doi.org/10.1016/s0140-6736(15)01121-6) (2016).
- Curkendall, S. M., Mo, J., Glasser, D. B., Rose Stang, M. & Jones, J. K. Cardiovascular disease in patients with schizophrenia in Saskatchewan, Canada. *J. Clin. Psychiatry* **65**, 715–720. <https://doi.org/10.4088/jcp.v65n0519> (2004).
- Ryan, M. C. & Thakore, J. H. Physical consequences of schizophrenia and its treatment: The metabolic syndrome. *Life Sci.* **71**, 239–257. [https://doi.org/10.1016/s0024-3205\(02\)01646-6](https://doi.org/10.1016/s0024-3205(02)01646-6) (2002).
- Henderson, D. C., Vincenzi, B., Andrea, N. V., Ulloa, M. & Copeland, P. M. Pathophysiological mechanisms of increased cardio-metabolic risk in people with schizophrenia and other severe mental illnesses. *Lancet Psychiatry* **2**, 452–464. [https://doi.org/10.1016/s2215-0366\(15\)00115-7](https://doi.org/10.1016/s2215-0366(15)00115-7) (2015).
- Reynolds, G. P. & Kirk, S. L. Metabolic side effects of antipsychotic drug treatment—pharmacological mechanisms. *Pharmacol. Ther.* **125**, 169–179. <https://doi.org/10.1016/j.pharmthera.2009.10.010> (2010).
- Misawa, F. *et al.* Is antipsychotic polypharmacy associated with metabolic syndrome even after adjustment for lifestyle effects?: A cross-sectional study. *BMC Psychiatry* **11**, 118. <https://doi.org/10.1186/1471-244x-11-118> (2011).
- Huang, T. L. & Chen, J. F. Serum lipid profiles and schizophrenia: Effects of conventional or atypical antipsychotic drugs in Taiwan. *Schizophr. Res.* **80**, 55–59. <https://doi.org/10.1016/j.schres.2005.05.001> (2005).
- Ou, J. J. *et al.* Comparison of metabolic effects of ziprasidone versus olanzapine treatment in patients with first-episode schizophrenia. *Psychopharmacology* **225**, 627–635. <https://doi.org/10.1007/s00213-012-2850-6> (2013).
- Salviato Balbao, M. *et al.* Olanzapine, weight change and metabolic effects: A naturalistic 12-month follow up. *Ther. Adv. Psychopharmacol.* **4**, 30–36. <https://doi.org/10.1177/2045125313507738> (2014).
- Chiu, C. C., Chen, C. H., Chen, B. Y., Yu, S. H. & Lu, M. L. The time-dependent change of insulin secretion in schizophrenic patients treated with olanzapine. *Prog. Neuropsychopharmacol. Biol. Psychiatry* **34**, 866–870. <https://doi.org/10.1016/j.pnpbp.2010.04.003> (2010).
- Gautam, S. & Meena, P. S. Drug-emergent metabolic syndrome in patients with schizophrenia receiving atypical (second-generation) antipsychotics. *Indian J. Psychiatry* **53**, 128–133. <https://doi.org/10.4103/0019-5545.82537> (2011).
- Raal, F. J., Hovingh, G. K. & Catapano, A. L. Familial hypercholesterolemia treatments: Guidelines and new therapies. *Atherosclerosis* **277**, 483–492. <https://doi.org/10.1016/j.atherosclerosis.2018.06.859> (2018).
- Mach, F. *et al.* 2019 ESC/EAS Guidelines for the management of dyslipidaemias: Lipid modification to reduce cardiovascular risk. *Eur. Heart J.* **41**(1), 111–188. <https://doi.org/10.1093/eurheartj/ehz455> (2019).
- Moher, D., Liberati, A., Tetzlaff, J. & Altman, D. G. Preferred reporting items for systematic reviews and meta-analyses: The PRISMA statement. *J. Clin. Epidemiol.* **62**, 1006–1012. <https://doi.org/10.1016/j.jclinepi.2009.06.005> (2009).
- Margulis, A. V. *et al.* Quality assessment of observational studies in a drug-safety systematic review, comparison of two tools: The Newcastle-Ottawa Scale and the RTI item bank. *Clin. Epidemiol.* **6**, 359–368. <https://doi.org/10.2147/clep.s66677> (2014).
- Slim, K. *et al.* Methodological index for non-randomized studies (minors): Development and validation of a new instrument. *ANZ J. Surg.* **73**, 712–716 (2003).
- Liu, H. H. & Li, J. J. Aging and dyslipidemia: A review of potential mechanisms. *Ageing Res. Rev.* **19**, 43–52. <https://doi.org/10.1016/j.arr.2014.12.001> (2015).
- Higgins, J. P., Thompson, S. G., Deeks, J. J. & Altman, D. G. Measuring inconsistency in meta-analyses. *BMJ (Clin. Res. Ed.)* **327**, 557–560. <https://doi.org/10.1136/bmj.327.7414.557> (2003).
- Kusumi, I. *et al.* Effect of olanzapine orally disintegrating tablet versus oral standard tablet on body weight in patients with schizophrenia: A randomized open-label trial. *Prog. Neuropsychopharmacol. Biol. Psychiatry* **36**, 313–317. <https://doi.org/10.1016/j.pnpbp.2011.11.004> (2012).
- Chen, J., Pan, X., Qian, M. & Yang, S. Efficacy and metabolic influence on blood-glucose and serum lipid of ziprasidone in the treatment of elderly patients with first-episode schizophrenia. *Shanghai Arch. Psychiatry* **29**, 104–110. <https://doi.org/10.11919/j.issn.1002-0829.217005> (2017).
- Wu, R.-R. *et al.* Effects of typical and atypical antipsychotics on glucose-insulin homeostasis and lipid metabolism in first-episode schizophrenia. *Psychopharmacology* **186**, 572–578. <https://doi.org/10.1007/s00213-006-0384-5> (2006).
- McDonnell, D. P., Kryzhanovskaya, L. A., Zhao, F., Detke, H. C. & Feldman, P. D. Comparison of metabolic changes in patients with schizophrenia during randomized treatment with intramuscular olanzapine long-acting injection versus oral olanzapine. *Hum. Psychopharmacol.* **26**, 422–433. <https://doi.org/10.1002/hup.1225> (2011).
- Correll, C. U. *et al.* Cardiometabolic risk in patients with first-episode schizophrenia spectrum disorders: Baseline results from the RAISE-ETP study. *JAMA Psychiatry* **71**, 1350–1363. <https://doi.org/10.1001/jamapsychiatry.2014.1314> (2014).
- Sheitman, B. B., Bird, P. M., Binz, W., Akinli, L. & Sanchez, C. Olanzapine-induced elevation of plasma triglyceride levels. *Am. J. Psychiatry* **156**, 1471–1472 (1999).
- Koro, C. E. *et al.* An assessment of the independent effects of olanzapine and risperidone exposure on the risk of hyperlipidemia in schizophrenic patients. *Arch. Gen. Psychiatry* **59**, 1021–1026. <https://doi.org/10.1001/archpsyc.59.11.1021> (2002).
- Abdel-Maksoud, M. F. & Hokanson, J. E. The complex role of triglycerides in cardiovascular disease. *Semin. Vasc. Med.* **2**, 325–333. <https://doi.org/10.1055/s-2002-35403> (2002).
- Silverman, M. G. *et al.* Association between lowering LDL-C and cardiovascular risk reduction among different therapeutic interventions: A systematic review and meta-analysis. *JAMA* **316**, 1289–1297. <https://doi.org/10.1001/jama.2016.13985> (2016).
- Reiner, Z. *et al.* Lipid lowering drug therapy in patients with coronary heart disease from 24 European countries—Findings from the EUROASPIRE IV survey. *Atherosclerosis* **246**, 243–250. <https://doi.org/10.1016/j.atherosclerosis.2016.01.018> (2016).
- Casey, D. E. Metabolic issues and cardiovascular disease in patients with psychiatric disorders. *Am. J. Med.* **118**(Suppl 2), 15s–22s. <https://doi.org/10.1016/j.amjmed.2005.01.046> (2005).
- Saxena, S. & Maj, M. Physical health of people with severe mental disorders: Leave no one behind. *World Psychiatry* **16**, 1–2. <https://doi.org/10.1002/wps.20403> (2017).
- Mitchell, A. J., Delaffon, V., Vancampfort, D., Correll, C. U. & De Hert, M. Guideline concordant monitoring of metabolic risk in people treated with antipsychotic medication: Systematic review and meta-analysis of screening practices. *Psychol. Med.* **42**, 125–147. <https://doi.org/10.1017/s003329171100105x> (2012).
- Osser, D. N., Najarian, D. M. & Dufresne, R. L. Olanzapine increases weight and serum triglyceride levels. *J. Clin. Psychiatry* **60**, 767–770. <https://doi.org/10.4088/jcp.v60n1109> (1999).
- Meyer, J. M. *et al.* Change in metabolic syndrome parameters with antipsychotic treatment in the CATIE Schizophrenia Trial: Prospective data from phase 1. *Schizophr. Res.* **101**, 273–286. <https://doi.org/10.1016/j.schres.2007.12.487> (2008).
- Xiong, Z. *et al.* Association of blood cell counts with the risk of olanzapine- or clozapine-induced dyslipidemia in Chinese schizophrenia patients. *Hum. Psychopharmacol.* **34**, e2699. <https://doi.org/10.1002/hup.2699> (2019).
- Albaugh, V. L., Singareddy, R., Mauger, D. & Lynch, C. J. A double blind, placebo-controlled, randomized crossover study of the acute metabolic effects of olanzapine in healthy volunteers. *PLoS ONE* **6**, e22662. <https://doi.org/10.1371/journal.pone.0022662> (2011).

36. Rummel-Kluge, C. *et al.* Head-to-head comparisons of metabolic side effects of second generation antipsychotics in the treatment of schizophrenia: A systematic review and meta-analysis. *Schizophr. Res.* **123**, 225–233. <https://doi.org/10.1016/j.schres.2010.07.012> (2010).
37. Buhagiar, K. & Jabbar, F. Association of first- vs. second-generation antipsychotics with lipid abnormalities in individuals with severe mental illness: A systematic review and meta-analysis. *Clin. Drug Invest.* **39**, 253–273. <https://doi.org/10.1007/s40261-019-00751-2> (2019).
38. Lin, Y. *et al.* Serum IL-1ra, a novel biomarker predicting olanzapine-induced hypercholesterolemia and hyperleptinemia in schizophrenia. *Prog. Neuropsychopharmacol. Biol. Psychiatry* **84**, 71–78. <https://doi.org/10.1016/j.pnpbp.2018.01.020> (2018).
39. Chiu, C.-C., Chen, K.-P., Liu, H.-C. & Lu, M.-L. The early effect of olanzapine and risperidone on insulin secretion in atypical-naive schizophrenic patients. *J. Clin. Psychopharmacol.* **26**, 504–507. <https://doi.org/10.1097/01.jcp.0000237947.80764.d9> (2006).
40. Martin-Gronert, M. S. *et al.* 5-HT_{2A} and 5-HT_{2C} receptors as hypothalamic targets of developmental programming in male rats. *Dis. Models Mech.* **9**, 401–412. <https://doi.org/10.1242/dmm.023903> (2016).
41. Kirk, S. L., Glazebrook, J., Grayson, B., Neill, J. C. & Reynolds, G. P. Olanzapine-induced weight gain in the rat: role of 5-HT_{2C} and histamine H₁ receptors. *Psychopharmacology* **207**, 119–125. <https://doi.org/10.1007/s00213-009-1639-8> (2009).
42. Manu, P. *et al.* Weight gain and obesity in schizophrenia: Epidemiology, pathobiology, and management. *Acta Psychiatr. Scand.* **132**, 97–108. <https://doi.org/10.1111/acps.12445> (2015).
43. Lopez, M. & Tena-Sempere, M. Estradiol effects on hypothalamic AMPK and BAT thermogenesis: A gateway for obesity treatment?. *Pharmacol. Ther.* **178**, 109–122. <https://doi.org/10.1016/j.pharmthera.2017.03.014> (2017).
44. Sentissi, O., Epelbaum, J., Olie, J. P. & Poirier, M. F. Leptin and ghrelin levels in patients with schizophrenia during different antipsychotics treatment: A review. *Schizophr. Bull.* **34**, 1189–1199. <https://doi.org/10.1093/schbul/sbm141> (2008).
45. Murashita, M. *et al.* Olanzapine increases plasma ghrelin level in patients with schizophrenia. *Psychoneuroendocrinology* **30**, 106–110. <https://doi.org/10.1016/j.psyneuen.2004.05.008> (2005).
46. Melkersson, K. Clozapine and olanzapine, but not conventional antipsychotics, increase insulin release in vitro. *Eur. Neuropsychopharmacol.* **14**, 115–119. [https://doi.org/10.1016/s0924-977x\(03\)00072-5](https://doi.org/10.1016/s0924-977x(03)00072-5) (2004).
47. Yan, H., Chen, J. D. & Zheng, X. Y. Potential mechanisms of atypical antipsychotic-induced hypertriglyceridemia. *Psychopharmacology* **229**, 1–7. <https://doi.org/10.1007/s00213-013-3193-7> (2013).
48. Postic, C. & Girard, J. Contribution of de novo fatty acid synthesis to hepatic steatosis and insulin resistance: Lessons from genetically engineered mice. *J. Clin. Invest.* **118**, 829–838. <https://doi.org/10.1172/jci34275> (2008).
49. Ferre, P. & Foufelle, F. SREBP-1c transcription factor and lipid homeostasis: Clinical perspective. *Horm. Res.* **68**, 72–82. <https://doi.org/10.1159/000100426> (2007).
50. Polymeropoulos, M. H. *et al.* Common effect of antipsychotics on the biosynthesis and regulation of fatty acids and cholesterol supports a key role of lipid homeostasis in schizophrenia. *Schizophr. Res.* **108**, 134–142. <https://doi.org/10.1016/j.schres.2008.11.025> (2009).
51. Jassim, G. *et al.* Acute effects of orexigenic antipsychotic drugs on lipid and carbohydrate metabolism in rat. *Psychopharmacology* **219**, 783–794. <https://doi.org/10.1007/s00213-011-2397-y> (2012).
52. Oh, K. J. *et al.* Atypical antipsychotic drugs perturb AMPK-dependent regulation of hepatic lipid metabolism. *Am. J. Physiol. Endocrinol. Metab.* **300**, E624–E632. <https://doi.org/10.1152/ajpendo.00502.2010> (2011).
53. Berg, P. H. *et al.* Olanzapine versus ziprasidone: Results of a 28-week double-blind study in patients with schizophrenia. *Am. J. Psychiatry* **162**, 1879–1887. <https://doi.org/10.1176/appi.ajp.162.10.1879> (2005).
54. Kane, J. *et al.* Treatment of schizophrenia with paliperidone extended-release tablets: A 6-week placebo-controlled trial. *Schizophr. Res.* **90**, 147–161. <https://doi.org/10.1016/j.schres.2006.09.012> (2007).
55. Saddichha, S., Manjunatha, N., Ameen, S. & Akhtar, S. Metabolic syndrome in first episode schizophrenia—A randomized double-blind controlled, short-term prospective study. *Schizophr. Res.* **101**, 266–272. <https://doi.org/10.1016/j.schres.2008.01.004> (2008).
56. Kryzhanovskaya, L. *et al.* Olanzapine versus placebo in adolescents with schizophrenia: A 6-week, randomized, double-blind, placebo-controlled trial. *J. Am. Acad. Child Adolesc. Psychiatry* **48**, 60–70. <https://doi.org/10.1097/CHI.0b013e3181900404> (2009).
57. Bushe, C., Sniadecki, J., Bradley, A. J. & Poole Hoffmann, V. Comparison of metabolic and prolactin variables from a six-month randomised trial of olanzapine and quetiapine in schizophrenia. *J. Psychopharmacol. (Oxford, England)* **24**, 1001–1009. <https://doi.org/10.1177/0269881108101783> (2010).
58. Narula, P. K., Rehan, H. S., Unni, K. E. & Gupta, N. Topiramate for prevention of olanzapine associated weight gain and metabolic dysfunction in schizophrenia: A double-blind, placebo-controlled trial. *Schizophr. Res.* **118**, 218–223. <https://doi.org/10.1016/j.schres.2010.02.001> (2010).
59. Schreiner, A. *et al.* Metabolic effects of paliperidone extended release versus oral olanzapine in patients with schizophrenia: A prospective, randomized, controlled trial. *J. Clin. Psychopharmacol.* **32**, 449–457. <https://doi.org/10.1097/JCP.0b013e31825cccaad> (2012).
60. Hu, S. *et al.* A randomized, 12-week study of the effects of extended-release paliperidone (paliperidone ER) and olanzapine on metabolic profile, weight, insulin resistance, and beta-cell function in schizophrenic patients. *Psychopharmacology* **230**, 3–13. <https://doi.org/10.1007/s00213-013-3073-1> (2013).
61. Modabbernia, A. *et al.* Melatonin for prevention of metabolic side-effects of olanzapine in patients with first-episode schizophrenia: Randomized double-blind placebo-controlled study. *J. Psychiatr. Res.* **53**, 133–140. <https://doi.org/10.1016/j.jpsychires.2014.02.013> (2014).
62. Zhang, S. & Lan, G. Prospective 8-week trial on the effect of olanzapine, quetiapine, and aripiprazole on blood glucose and lipids among individuals with first-onset schizophrenia. *Shanghai Arch. Psychiatry* **26**, 339–346. <https://doi.org/10.11919/j.issn.1002-0829.214037> (2014).
63. Kumar, P. N. S., Anish, P. K. & Rajmohan, V. Olanzapine has better efficacy compared to risperidone for treatment of negative symptoms in schizophrenia. *Indian J. Psychiatry* **58**, 311–316. <https://doi.org/10.4103/0019-5545.192016> (2016).
64. Tanaka, K. *et al.* Decreased levels of ghrelin, cortisol, and fasting blood sugar, but not n-octanoylated ghrelin, in Japanese schizophrenic inpatients treated with olanzapine. *Prog. Neuropsychopharmacol. Biol. Psychiatry* **32**, 1527–1532. <https://doi.org/10.1016/j.pnpbp.2008.05.013> (2008).
65. Gilles, M. *et al.* Visceral and subcutaneous fat in patients treated with olanzapine: A case series. *Clin. Neuropharmacol.* **33**, 248–249. <https://doi.org/10.1097/WNE.0b013e3181f0ec33> (2010).

Acknowledgements

This work was supported by the National Natural Science Foundation of China (Grant number 81974281), the National Natural Science Foundation for Young Programs of China (Grant number 81700999), and the Natural Science Foundation of Hunan Province (Grant number 2018JJ3741).

Author contributions

Y.Z. and W.Z. reviewed literature and designed the review, Y.Z. and R.L. conducted the search for the systematic review, C.D. and R.L. interpreting the data, X.S., W.J. D. and W.D. conducted the statistical analysis, J.X. and Z.X. prepared the figures and tables, X.H. revising the manuscript, and all authors reviewed the manuscript.

Competing interests

The authors declare no competing interests.

Additional information

Supplementary information is available for this paper at <https://doi.org/10.1038/s41598-020-73983-4>.

Correspondence and requests for materials should be addressed to X.H.

Reprints and permissions information is available at www.nature.com/reprints.

Publisher's note Springer Nature remains neutral with regard to jurisdictional claims in published maps and institutional affiliations.



Open Access This article is licensed under a Creative Commons Attribution 4.0 International License, which permits use, sharing, adaptation, distribution and reproduction in any medium or format, as long as you give appropriate credit to the original author(s) and the source, provide a link to the Creative Commons licence, and indicate if changes were made. The images or other third party material in this article are included in the article's Creative Commons licence, unless indicated otherwise in a credit line to the material. If material is not included in the article's Creative Commons licence and your intended use is not permitted by statutory regulation or exceeds the permitted use, you will need to obtain permission directly from the copyright holder. To view a copy of this licence, visit <http://creativecommons.org/licenses/by/4.0/>.

© The Author(s) 2020