



OPEN

Rapid detection of cytochrome *cd1*-containing nitrite reductase encoding gene *nirS* of denitrifying bacteria with loop-mediated isothermal amplification assay

Xuzhi Zhang^{1,2,4}, Qianqian Yang^{3,4}, Qingli Zhang¹, Xiaoyu Jiang^{1,3}, Xiaochun Wang¹, Yang Li¹, Jun Zhao¹ & Keming Qu^{1,2}✉

The cytochrome *cd1*-containing nitrite reductase, *nirS*, plays an important role in biological denitrification. Consequently, investigating the presence and abundance of *nirS* is a commonly used approach to understand the distribution and potential activity of denitrifying bacteria, in addition to denitrifier communities. Herein, a rapid method for detecting *nirS* gene with loop-mediated isothermal amplification (LAMP) was developed, using *Pseudomonas aeruginosa* PAO1 (*P. aeruginosa* PAO1) as model microorganism to optimize the assay. The LAMP assay relied on a set of four primers that were designed to recognize six target sequence sites, resulting in high target specificity. The limit of detection for the LAMP assay under optimized conditions was 1.87 pg/reaction of genomic DNA, which was an order of magnitude lower than that required by conventional PCR assays. Moreover, it was validated that *P. aeruginosa* PAO1 cells as well as genomic DNA could be directly used as template. Only 1 h was needed from the addition of bacterial cells to the reaction to the verification of amplification success. The *nirS* gene of *P. aeruginosa* PAO1 in spiked seawater samples could be detected with both DNA-template based LAMP assay and cell-template based LAMP assay, demonstrating the practicality of in-field use.

Denitrification that involves the reduction of nitrate to gaseous forms is a globally important process with relevance to many environments^{1–3}. For example, denitrification can lead to the loss of nitrogen content in agricultural soils, but is also employed to remove excess nitrogen in environments like wastewaters and sludges². Microorganism-mediated activities play an important role in denitrification and have even been applied to alleviate eutrophication^{4,5}. Thus, a more detailed understanding of denitrifying organisms will aid in the application of numerous denitrification-related processes. Denitrifying bacteria comprise a wide diversity of microbial species. Cultivation-independent investigation of denitrifiers has been commonly used and has focused on analyzing key reductase functional genes^{2–6}. In particular, the key step in denitrification is the reduction of nitrite to nitric oxide that is catalyzed by two structurally different, but functionally equivalent, forms of nitrite reductase encoded by the *nirK* and *nirS* genes^{2,3,7}. Thus, *nir* genes are commonly used molecular markers for characterizing the diversity and abundance of denitrifying bacteria in environmental communities^{3,7–9}. Of these, *nirS* is frequently used because its phylogenetic signal is largely congruent with that of 16S rRNA genes at the family or genus levels^{10,11}.

The application of modern molecular biological techniques has greatly facilitated the detection of specific genes. In the last few decades, numerous methods including polymerase chain reaction (PCR)^{2,3,11–15}, denaturing gradient gel electrophoresis^{2,16} and gene chips¹⁷ have been used to detect and analyse *nirS* gene prevalence and diversity. Among these, PCR-based methods have been prominently employed due to their high degree of

¹Yellow Sea Fisheries Research Institute, Chinese Academy of Fishery Sciences, Qingdao 266071, China. ²Laboratory for Marine Fisheries Science and Food Production Processes, Pilot National Laboratory for Marine Science and Technology (Qingdao), Qingdao 266071, China. ³College of Marine Sciences, Shanghai Ocean University, Shanghai 201306, China. ⁴These authors contributed equally: Xuzhi Zhang and Qianqian Yang. ✉email: qukm@ysfri.ac.cn

accuracy and reliability. In particular, quantitative real-time PCR (qPCR) is a highly sensitive and popular tool for *nirS* detection that allows simultaneous quantification¹¹. However, qPCR suffers from several drawbacks including the requirement of specialized equipment, trained operators, and high costs that largely limit its application in resource-limited settings and, especially, in-field applications^{18,19}.

Loop-mediated isothermal amplification (LAMP) that was established by Notomi et al.²⁰ has the potential to overcome drawbacks associated with conventional PCR and revolutionize molecular biology. Compared to conventional PCR methods, it exhibits several significant advantages^{18,21} including: (1) Specialized equipment is not necessary due to the avoidance of thermal cycling, resulting in advantages including ease of miniaturization, low energy consumption, and high efficiency^{20,22}. (2) Higher specificity by LAMP is achieved due to the use of four to six different primers that bind specific sites on the template strand. (3) Sensitivity is less affected by substances that usually inhibit PCR reactions^{22,23}. These advantages suggest that simple assays could be developed using LAMP with elimination of the most cumbersome steps of sample pretreatment including DNA extraction and purification^{24–26}. Several studies have demonstrated the capacity of LAMP to directly amplify target genes from rapidly processed, crude sample matrices^{27–30} including unprocessed samples with or without simple mechanical-based pretreatments^{26,31,32}. Consequently, the employment of LAMP considerably reduces the cost and turnaround time associated with gene detection. However, there have been no reports of *nirS* gene detection via LAMP.

We have successfully used LAMP assays previously to detect *malB* genes of *Escherichia coli* (*E. coli*)^{33,34}. Herein, we developed a rapid, easy-to-use, and cost-effective approach for realizing in-field detection of *nirS* gene of *P. aeruginosa*³⁵, by constructing a DNA-template based LAMP assay and a cell-template based LAMP assay. The sensitivity and specificity of the new approach were characterized and compared to conventional PCR methods via a sensitivity analysis with extracted genomic DNA as template. Moreover, the LAMP assays were also used to detect *nirS* gene in seawater samples spiked with genomic DNA or *P. aeruginosa* PAO1 cells.

Materials and methods

Bacterial strains. Standard bacterial strains of *P. aeruginosa* PAO1 (ATCC15692), *P. aeruginosa* (ATCC9027), *P. aeruginosa* (BNCC338118), *P. aeruginosa* (BNCC125486), *P. aeruginosa* (BNCC221886), *Paracoccus denitrificans* (*P. denitrificans*, BNCC135114), *P. denitrificans* (BNCC197942), *Pseudomonas stutzeri* (*P. stutzeri*, BNCC139708), *Pseudomonas putida* (*P. putida*, BNCC337007), *Alcaligenes faecalis* (*A. faecalis*, ATCC8750), *Blastobacter denitrificans* (*B. denitrificans*, ATCC43295), *E. coli* (ATCC35150), *E. coli* (BNCC133264), *Staphylococcus aureus* (*S. aureus*, ATCC25923), *Listeria monocytogenes* (*L. monocytogenes*, ATCC19116), *Salmonella typhimurium* (*S. typhimurium*, ATCC14028), *Vibrio parahaemolyticus* (*V. parahaemolyticus*, ATCC 17802), *Vibrio cholera* (*V. cholera*, BNCC232030), and *Shigella flexneri* (*S. flexneri*, CGMCC11868) were all purchased from BIOBW Biotechnology Co., Ltd (Beijing, China). Additional strains including *E. coli* (120303502, 120303510, 120303512) and *Streptomyces* (1203EC1070400021, 1203SPL070400003, SAHL070400003) were isolated and identified from environmental samples taken from farms. *Halomonas alkaliphila* strains (strains X1, X2, X3) were isolated and identified from seawater samples. Note, unless otherwise indicated, *P. aeruginosa* in this paper referred to PAO1 (ATCC15692) strain.

Cultivation and cell quantification. Luria–Bertani (LB) medium was used to culture *P. aeruginosa*, *E. coli*, *S. aureus*, *S. typhimurium*, *Streptomyces* spp. and *S. flexneri*. Other denitrifying strains used in this study were cultured aerobically in nutrient medium². Listeria Enrichment medium was used to culture *L. monocytogenes*. Alkaline peptone water was used to culture *V. cholera*. While 2216E medium (a common complex culture medium for marine bacteria, consisting of 0.5% tryptone, 0.1% yeast extract, 3.4% NaCl and 0.01% FePO₄, pH 7.6–7.8) was used to culture *V. parahaemolyticus* and *H. alkaliphila*. Culture media were all purchased from the Hope Bio-Technology Co., Ltd (Qingdao, China). Bacterial cultivation was conducted in accordance with previously described methods^{36,37} with minor modifications. Briefly, strains were stored at –80 °C and then pre-grown overnight in the appropriate medium with constant shaking. The incubation temperature was 37 °C unless otherwise indicated. Active strains were then further transferred to new culture medium. After a second incubation for ~10 h, cell numbers were measured using a plate counting method that we have used previously³⁷. The cultures were then immediately diluted to achieve the desired cell concentrations for further use, or otherwise centrifuged to collect cells for DNA extraction.

Genomic DNA extraction and purification. DNA was extracted from cells collected from 50 mL of sub-cultured medium, followed by DNA purification using previously described methods³⁴. Briefly, cells were pre-separated by centrifugation and genomic DNA was extracted and purified from the collected cells using a rapid commercial genomic DNA extraction kit (Biomed Co., Beijing, China) according to the manufacturer's instructions. Purified DNA was then quantified using a Biodropsis BD-2000 spectrophotometer (Biodropsis Technologies Co., Ltd, Beijing, China). Template genomic DNAs were then stored in Tris–EDTA buffer (pH 7.0) at –20 °C until further use no later than 4 weeks after extraction.

LAMP assays. Primer design and synthesis. The *nirS* gene sequence of *P. aeruginosa* was obtained from the NCBI database (<https://www.ncbi.nlm.nih.gov/gene/882217>). LAMP primer sets to amplify *nirS* were designed based on the published DNA sequence using the LAMP primer designing software package (v.4.0, <https://primerexplorer.jp/e/>). Using previously published guidelines³⁸, the specificity of the primers was determined using the NCBI BLAST (Basic Local Alignment Search Tool), and then screened using Primer Premier v.5.0 (PREMIER Biosoft International, Palo Alto, CA) based on the likelihood of primer dimer formation and non-specific priming. From these analyses, a single primer set was selected for LAMP assays (Fig. 1). From the first batch of F3 to

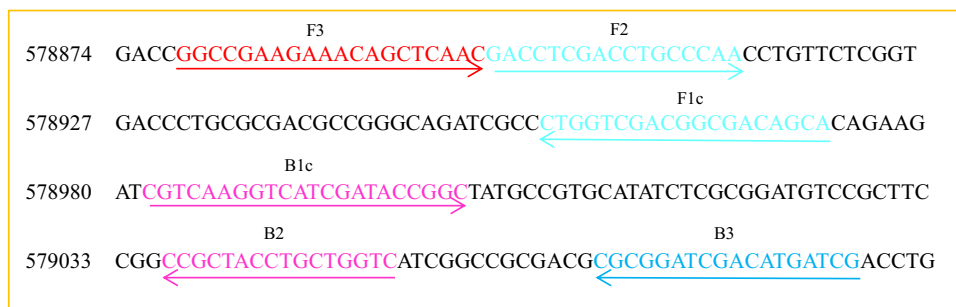


Figure 1. Priming locations and orientation of the LAMP primers developed to amplify *P. aeruginosa nirS*. The arrows show sequence directions from 5' to 3'. The asterisks denote consistent nucleotides sequence not shown.

Primer	Sequence (5'-3')
<i>nirS</i> -F3	GGCCGAAGAAACAGCTCAAC
<i>nirS</i> -B3	CGATCATGTCGATCCGCG
<i>nirS</i> -FIP	TGCTGTCGCCGTCGACCAGTTTTCACCTCGACCTGCCCAA
<i>nirS</i> -BIP	CGTCAAGGTCATCGATACCGGCTTTTCACCAGCAGGTAGCGG

Table 1. LAMP primer sequences.

the last base of B3, there were 207 bp. The sequence of the 207 bases was checked using the NCBI BLAST. Only *nirS* gene of a dozen *P. aeruginosa* strains matched at 100%. The primers were then synthesized by Sangon Biotech Co., Ltd, (Shanghai, China). The priming locations on the target DNA sequence are shown in Fig. 1, and the primer nucleotide sequences are provided in Table 1.

LAMP reaction systems and amplification product characterization. As shown in Fig. 2a, LAMP assays using DNA as template, termed DNA-template based LAMP assays, were conducted using previously described methods^{20,34} with minor modifications. Unless otherwise indicated, 25 μ L LAMP reaction volumes were used comprising 0.2 μ M of each outer primer (B3 and F3), 1.6 μ M of each inner primer (FIP and BIP), 1.2 mM of each dNTP, 2.5 μ L 10 \times ThermoPol[®] reaction buffer, 1 μ L *Bst* 2.0 DNA polymerase, 6 mM MgSO₄, and 1 μ L genomic DNA template. dNTPs were purchased from MBI Fermentas (Waltham, USA) and *Bst* 2.0 DNA polymerase was purchased from New England Biolabs (Ipswich, Massachusetts, USA). Reactions were incubated at 63 $^{\circ}$ C for 60 min in a block heater, unless otherwise indicated. Based on the methods described in Tomita et al.³⁹ LAMP reaction products were characterized by gel electrophoresis on a 2% agarose gel using a DY-6 electrophoresis apparatus (Xinghua Assay Apparatus Factory, Beijing, China) and a DNR Bio-Imaging System (MF-ChemiBis 3.2, Israel). Electrophoresis was conducted using 50 \times diluted LAMP reaction products. Additional visual characterization using the fluorescent dye GeneFinder (Biov Co., Ltd., Xiamen, China) was also performed. Triplicate determinations were performed for every set of analyses.

As shown in Fig. 2b, cell-template based LAMP assays were carried out using the same method described for the *nirS* gene, but with *P. aeruginosa* cells as template rather than extracted genomic DNA. *P. aeruginosa* cells were obtained using the methods described by Kanitkar et al.³¹ Briefly, after the concentration of bacterial cells was quantified using the plate counting method described above, 10 mL of culture medium was centrifuged at 13,000g for 15 min to obtain a biomass pellet. The biomass pellet was then suspended in an appropriate volume of water and 2 μ L of the bacterial suspension was immediately used as amplification template. LAMP products were again characterized by gel electrophoresis and fluorescent dye visualization as described above.

Optimization. The temperatures and incubation times for the LAMP assay were optimized based on the approach of Balbin et al.⁴⁰ Briefly, amounts of *P. aeruginosa* genomic DNA varying from 18.70 fg to 187.00 ng were used as amplification template. LAMP was then carried out at 61 $^{\circ}$ C, 62 $^{\circ}$ C, 63 $^{\circ}$ C, 64 $^{\circ}$ C, and 65 $^{\circ}$ C. After determining the optimal temperature for the assays, LAMP was then conducted with varying incubation times including 10, 20, 30, 40, 50, 60, 70, and 80 min.

Specificity. The specificity of the designed *nirS* primer set was determined using either genomic DNA or bacterial cells as amplification templates. For the former, \sim 0.1 ng genomic DNA from *P. aeruginosa*, *E. coli*, *S. aureus*, etc. was used as template for the LAMP assay. Gel electrophoresis and/or visual detection were used to characterize the amplification products. For assays with cells, \sim 10⁵ CFU of bacterial cells were used as amplification template. Unless otherwise indicated, for both sets of assays, 0.19 ng of *P. aeruginosa* genomic DNA and pure water were used as the positive and negative controls, respectively.

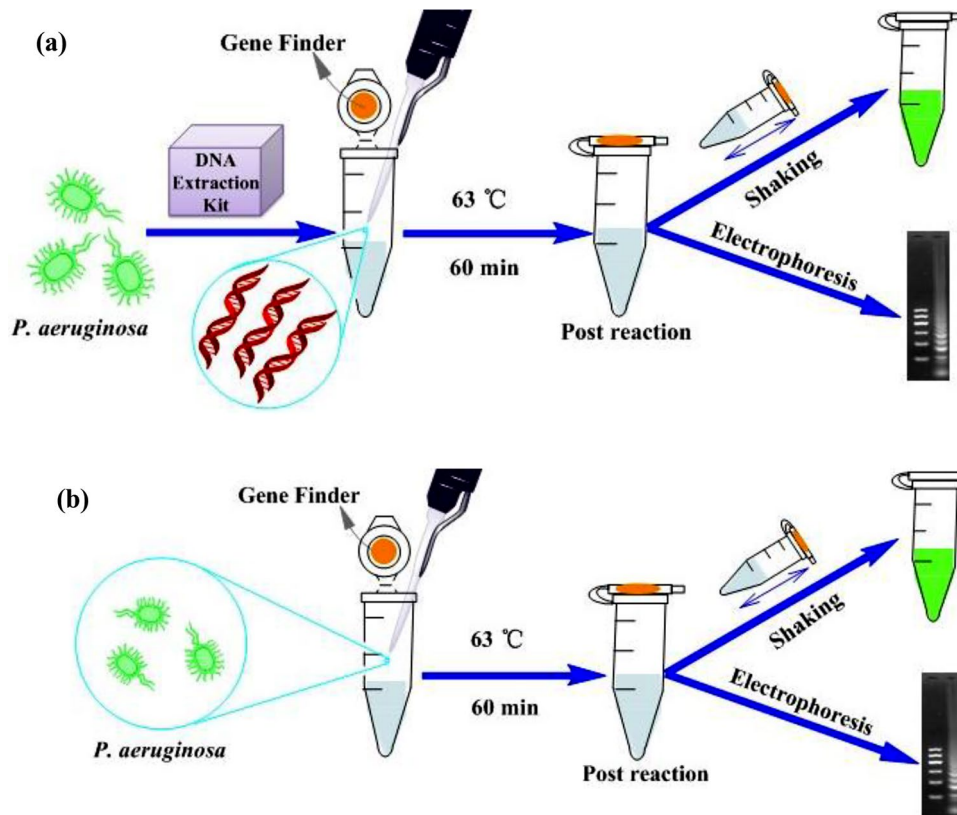


Figure 2. Methodological schematics for the DNA-template based LAMP assay (a) and the cell-template based direct LAMP assay (b) for detecting the *nirS* genes of *P. aeruginosa*.

Sensitivity. *Sensitivity of DNA-template based LAMP assay.* The sensitivity of the DNA-template based LAMP assay for *nirS* was determined using a tenfold serial dilution of the template DNA. Results were again characterized using both gel electrophoresis and visual detection. The limits of detection (LOD) were obtained from these analyses using the same reaction parameters discussed above. Unless otherwise indicated, each assay was conducted in triplicate.

In addition, synthesized double-stranded DNA (sequence was in Fig. 1) at known concentration (copy/ μL) was also used as template for LAMP assay as we reported previously⁴¹, to calculate the sensitivity on copy number of *nirS* gene. The LAMP reactions were incubated at 63 °C for 60 min.

Sensitivity of cell-template based LAMP assay. The sensitivity of the cell-template based LAMP assay for *nirS* was determined using methods described by Lee et al.²⁷ with minor modifications. Briefly, a biomass pellet of bacterial cells was obtained from centrifugation of the cell cultures. The pellet was then suspended in 5 mL water. An aliquot (500 μL) of the bacterial suspension was used to measure cellular concentrations. The remainder of the suspension was used as template for direct amplification using the LAMP assay with tenfold serial dilutions to identify the LOD (CFU/reaction). The results were characterized with both gel electrophoresis and visual detection. Unless otherwise indicated, each assay was conducted in triplicate.

Conventional PCR assays. The F3 and B3 primers were used for conventional PCR assays following the methods of Verma et al.¹⁹ and Stedtfeld et al.³² PCR reactions comprised 25 μL volumes consisting of 1 μL genomic DNA template, 12.5 μL Version 2.0 Taq polymerase plus dye (TaKaRa Biotechnology Co., Ltd., Dalian, China), and 1 μL of each primer (0.2 μM in reaction mix). PCR reaction conditions consisted of 94 °C for 3 min, followed by 30 cycles of 94 °C for 45 s, 54 °C for 55 s, 72 °C for 90 s and a final extension at 72 °C for 10 min. A 5 μL aliquot of each PCR product was subjected to 2% agarose gel electrophoresis for characterization.

Detection of *nirS* gene in spiked seawater samples. To investigate the ability of the LAMP assay to detect *nirS* in complex natural matrices, a spiked LAMP assay was conducted with seawater samples. The seawater sample was collected from the Yellow Sea (36° 06.54' N; 120° 39.28' E). Water salinity (31.01‰) and pH (8.062) were measured using a YSI 556 Multi Probe System (Envisupply Co., USA). Bacterial biomass and extracellular DNA were removed from the water using filtration with 0.22 μm Sterivex filters followed by filtration with Silicone membranes (EMD Millipore Corp., Billerica, MA), respectively³². The capacity of the LAMP assays to detect *nirS* gene was then challenged using seawater samples spiked with genomic DNA and *P. aeruginosa*

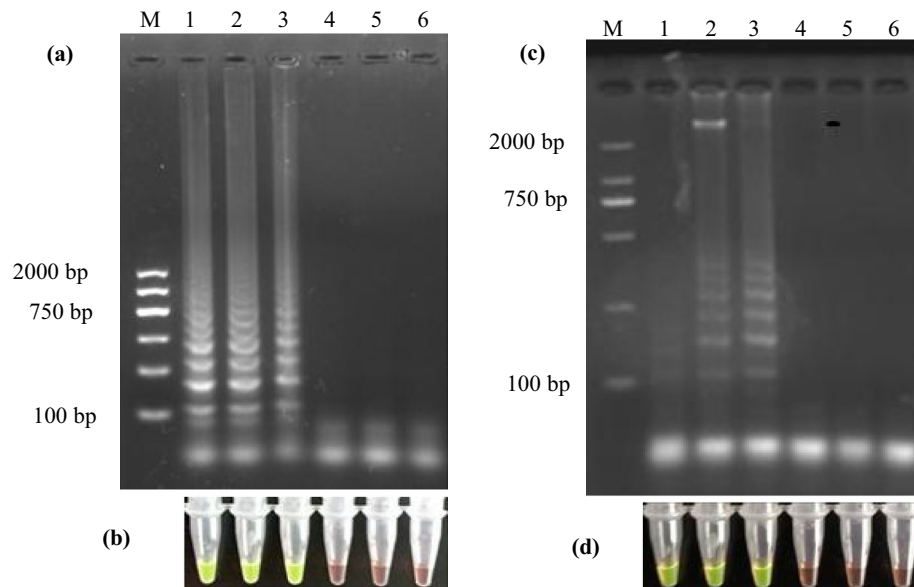


Figure 3. Left: Detection of the *nirS* gene with DNA-template based LAMP assay, characterizing with gel electrophoresis (a) and GeneFinder (b). Lanes 1–3 are amplification reactions using 0.19 ng of extracted genomic DNA as template; Lanes 4–6 are the negative control. Right: Detection of the *nirS* gene with cell-template based LAMP assay, characterizing with gel electrophoresis (c) and GeneFinder (d). Lanes 1–3 are amplification reactions using 3.36×10^2 CFU *P. aeruginosa* cells as template; Lanes 4–6 are the negative control. The LAMP reactions were incubated at 63 °C for 60 min. In all negative control reactions, water was used as template.

cells, respectively. All seawater samples were used for the next step within 20 min after the spiked performance, unless otherwise indicated.

DNA-template based LAMP assay. Extracted *P. aeruginosa* genomic DNA was added to the filtered seawater over a concentration range of 1.27×10^2 – 1.27×10^8 fg/ μ L. Then, 1 μ L of seawater samples with varying spiked DNA concentrations were directly used as templates for LAMP assays. The LOD were then determined based on visual detection of the amplification products.

Cell-template based LAMP assay. A $\sim 10^{13}$ CFU/mL bacterial suspension was prepared in water, as described above. Bacterial suspensions were added to the filtered seawater at various volumes to generate spiked samples over a cell concentration range of 1.68×10^1 – 1.68×10^7 CFU/mL. For each spiked sample, a 50 mL cell suspension was subjected to centrifugation to pellet cells. The obtained biomass pellet was then directly used as template for LAMP assays. In addition, 2 μ L of spiked seawater samples were directly used as templates for LAMP assays. The LOD were determined based on visual detection of amplification products.

Results

LAMP amplification of *nirS*. Using 0.19 ng genomic DNA of *P. aeruginosa* as template, LAMP amplification of *nirS* at 63 °C for 60 min resulted in amplification products of various size, as indicated by gel electrophoresis and the presence of many sized bands in a reproducible ladder-like pattern (Fig. 3a), which was the same phenomena obtained somewhere^{20,23,24,33,34}. The absence of these ladder-like patterns in the negative control indicated that the pattern was due to *nirS* amplification. Light green fluorescence of positive amplification products when using the GeneFinder dye was evident (Fig. 3b) as previously observed³³, while negative controls remained orange. To avoid inhibition of the dye fluorescence, 1 μ L of GeneFinder solution was coated inside of the Eppendorf tube cover, rather than premixing it into the LAMP reaction mixture.

To optimize the assay, LAMP reactions were conducted at various temperatures and incubation times. The ladder-like electrophoresis patterns observed in the initial amplifications were reproduced when using 0.19 pg of genomic DNA as template and incubating reactions at 63 °C for 60 min. Modifying the incubation temperatures or using incubation times < 60 min resulted in the absence of ladder-like electrophoresis band patterns. Consequently, an incubation temperature of 63 °C and time of 60 min were selected for further analyses.

Using 3.36×10^2 CFU of *P. aeruginosa* cells as template, cell-template based LAMP assays were also incubated at 63 °C for 60 min and yielded similar successful amplification results as with amplification using genomic DNA (Fig. 3c,d), without negative control amplification. These results indicated positive LAMP amplification from *P. aeruginosa* cells under the specified conditions.

Species	Strain	LAMP amplification	
		Gel electrophoresis	Fluorescent dye
<i>P. aeruginosa</i>	PAO1 ATCC 15692	+	+
	ATCC 9027	+	+
	BNCC125486	+	+
	BNCC338118	+	+
	BNCC 221886	+	+
<i>P. denitrificans</i>	BNCC135114	+	+
	BNCC197942	+	+
<i>P. stutzeri</i>	BNCC139708	+	+
<i>P. putida</i>	BNCC337007	–	–
<i>A. faecalis</i>	ATCC8750	–	–
<i>B. denitrificans</i>	ATCC43295	–	–
<i>E. coli</i>	ATCC 35150	–	–
	BNCC133264	–	–
<i>S. aureus</i>	ATCC25923	–	–
<i>L. monocytogenes</i>	ATCC 19116	–	–
<i>S. typhimurium</i>	ATCC 14028	–	–
<i>S. flexneri</i>	CGMCC11868	–	–
<i>V. parahaemolyticus</i>	ATCC 17802	–	–
<i>V. cholerae</i>	BNCC232030	–	–
<i>H. alkaliphila</i>	X1	–	–
<i>H. alkaliphila</i>	X2	–	–
<i>H. alkaliphila</i>	X3	–	–
<i>E. coli</i>	120303502	–	–
<i>E. coli</i>	120303510	–	–
<i>E. coli</i>	120303512	–	–
<i>Streptomyces</i>	1203EC1070400021	–	–
<i>Streptomyces</i>	1203SPL070400003	–	–
<i>Streptomyces</i>	SAHL070400003	–	–

Table 2. DNA-template based LAMP assays for detecting *nirS* gene of various bacterial species. + positive, – negative.

Specificity of LAMP assay. The specificity of the LAMP assay for the detection of *nirS* gene was determined using ~0.10 ng of genomic DNA from various bacterial species as template (Table 2). Results of visual detection (Figure S1) indicated the specific amplification of *nirS* from bacterial genomic DNA that contains the cytochrome *cd1*-containing nitrite reductase encoding gene^{2,35}. Moreover, no false positive or false negative results were observed when using template DNA from a wide range of control bacterial species (Figure S2), also indicating good specificity of the LAMP assay for the *nirS* gene.

Experiments were also conducted to evaluate the specificity of *nirS* detection via cell-template based LAMP assay using ~10³ CFU/reaction from various bacterial species as template. The results from these assays (Table S1) were consistent with those obtained from DNA-template based LAMP assays, indicating high specificity of cell-template based amplification under the selected conditions.

Sensitivity of LAMP assay. We assessed the sensitivity of DNA-template based LAMP assay over the amount range of 1.87 fg–187.00 ng. The results (Fig. 4a,b) indicated that the LOD was 1.87 pg/reaction with these specified parameters. Below the LOD, no visual detection of amplification products was observed. Moreover, the sensitivity of gel electrophoresis and visual detection were equivalent, suggesting that they were both equally appropriate for determining LAMP amplification success. Using longer incubation times can lower the LOD of LAMP assays at the expense of analysis efficiency⁴². Consequently, 60 min was selected as the incubation time for all other reactions. In addition, when the synthesized double-stranded DNA was used as template for the assay of *nirS* gene, we obtained a LOD of 16.4 copy/μL. The sensitivity of cell-template based LAMP assays was also evaluated as above with amount of *P. aeruginosa* cells over the range of 3.36 × 10⁰–3.36 × 10⁸ CFU/reaction (Fig. 4c,d). The LOD was 3.36 × 10² CFU/reaction.

Comparison of PCR and LAMP. Using the F3 and B3 primers, experiments were conducted to determine the sensitivity of conventional PCR assay in comparison with the DNA-template based LAMP assay. Genomic DNA amount ranging from 1.87 fg to 187.00 ng/reaction were used as template for the reactions. Gel electrophoresis characterization of PCR amplification products indicated no amplification when the DNA template was in a lower amount than 18.70 pg/reaction (Fig. 5), but amplification was detected over the range of 18.70 pg to

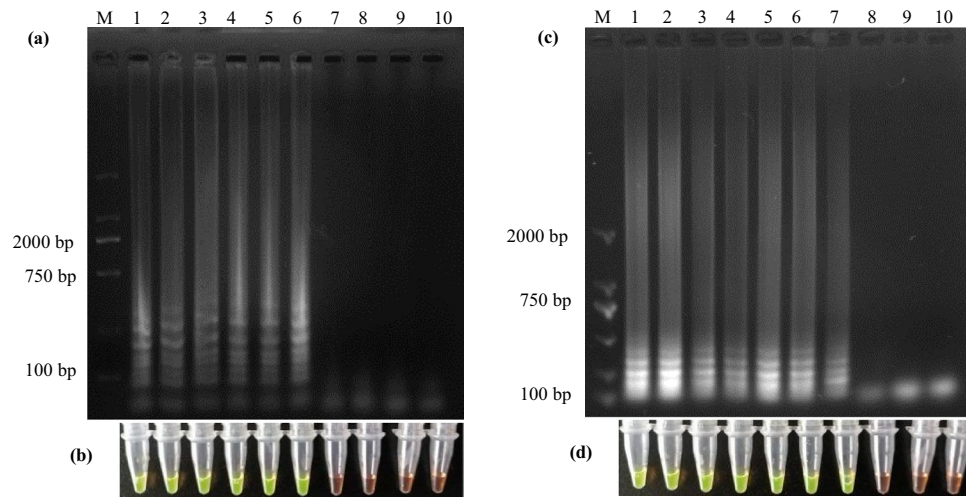


Figure 4. Left: DNA-template based LAMP assay results of *nirS* gene using 187.00 ng, 18.70 ng, 1.87 ng, 187.00 pg, 18.70 pg, 1.87 pg, 187.00 fg, 18.70 fg, 1.87 fg, and 0.00 fg genomic DNA as template in each reaction (from lane 1 to lane 10), characterizing with gel electrophoresis (a) and GeneFinder (b). Right: cell-template based LAMP assay results of *nirS* gene using 3.36×10^8 , 3.36×10^7 , 3.36×10^6 , 3.36×10^5 , 3.36×10^4 , 3.36×10^3 , 3.36×10^2 , 3.36×10^1 , 3.36×10^0 , and 0.00 CFU *P. aeruginosa* cells as template in each reaction (from lane 1 to lane 10), characterizing with gel electrophoresis (c) and GeneFinder (d).

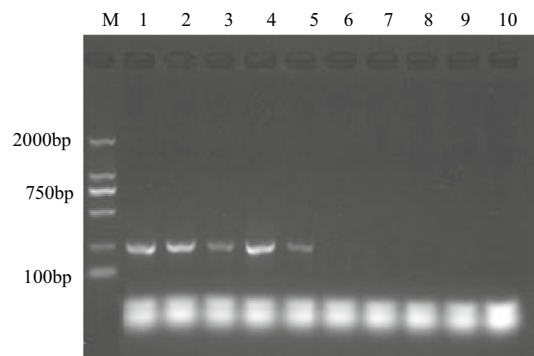


Figure 5. Conventional PCR assay results of *nirS* using 187.00 ng, 18.70 ng, 1.87 ng, 187.00 pg, 18.70 pg, 1.87 pg, 187.00 fg, 18.70 fg, 1.87 fg, and 0.00 fg genomic DNA of *P. aeruginosa* as template in each reaction (from lane 1 to lane 10), characterizing with gel electrophoresis.

187.00 ng/reaction. These results indicate a wider dynamic range of the LAMP assays, with tenfold greater sensitivity than conventional PCR when using genomic DNA. Further, no PCR amplification was detected when *P. aeruginosa* cells were directly added to each PCR reaction mixture over the range of 3.36×10^8 – 3.36×10^4 CFU/reaction.

Detection of *nirS* gene in spiked seawater samples. To investigate the ability of the DNA-template based LAMP and the cell-template based LAMP assays for detecting *nirS* in complex matrices, we spiked seawater samples with *P. aeruginosa* genomic DNA or cells over concentration ranges of 1.27×10^2 – 1.27×10^8 fg/ μ L and 1.68×10^1 – 1.68×10^7 CFU/mL, respectively. A 2 μ L aliquot of the spiked samples was then used as a template in reactions with incubations at 63 °C for 60 min. Amplification success was characterized by staining with GeneFinder. Amplifications did not occur with genomic DNA concentrations lower than 1.27×10^4 fg/ μ L in the spiked samples (Figure S3). In the cell-template based LAMP assay, a 50 mL mixture of seawater spiked with cells at different concentrations was pretreated by centrifugation to pellet cells. The obtained biomass pellet was then directly used as the template for the cell-template based LAMP assay. Amplifications occurred using every biomass pellet obtained from the spiked samples (Figure S4). When using a 2 μ L spiked sample as a template, amplifications only occurred when cell concentrations were greater than 1.68×10^4 CFU/mL (Figure S5).

Discussion

Denitrification and denitrifying microbial communities have recently received widespread research attention due to their important contributions to the global nitrogen cycle^{1,8,43}. Functional genes involved in nitrite reduction, especially the cytochrome *cd1*-containing nitrite reductase encoding gene, *nirS*, are commonly used as molecular markers to detect denitrifying populations and potential activities^{8,43–46}. Concomitantly, the recent development of a novel gene amplification procedure, LAMP, has shown great promise in overcoming the numerous drawbacks of conventional PCR gene amplification methods. In this study, a DNA-template based LAMP assay and a cell-template based LAMP assay were developed to detect *nirS* gene of *P. aeruginosa*. The characteristics of these assays are discussed below and compared against those of conventional PCR assays.

LAMP reactions achieve DNA amplifications using a one-step reaction with a set of target-specific primers (e.g., FIP, BIP, F3, and B3) that recognize six distinct sites flanking the target sequence. The FIP and BIP, each of which contains two functional sequences (one for priming extension in the first stage and the other for self-priming in the second stage) corresponding to the sequences (sense and antisense) of the target dsDNA, play major roles in the LAMP reaction. Catalyzing by *Bst* DNA polymerase with strand displacement activity, LAMP reaction includes two stages. In the first stage, all of four primers are used to start structure-produce. In the second stage, only FIP and BIP are required for realizing cycling amplification. In brief, an ssDNA is released by strand displacement DNA synthesis primed by an F3 and then acts as the template for DNA synthesis primed by both BIP and B3, producing a stem-loop DNA structure. After initiation by one inner primer complementary to the loop on the product, the cycling amplification process is continued by each inner primer alternately. Thus, the specificity is higher than PCR and the final products are stem-loop DNAs with different inverted target repeats and cauliflower-like structures with multiple loops, which are ladder-like patterns characterized by gel electrophoresis^{18,20}. *NirS* gene is absent in *S. aureus* and *E. coli* genomes, but present in those of *P. aeruginosa*⁴⁷, which is consistent with other reports^{35,42}. Our amplification results from LAMP specificity assays are consistent with these reports.

PCR activity strongly depends on the cycling of working temperatures, consequently requiring sophisticated equipment to accurately control reaction temperatures. One of the major advantages of the LAMP assay over conventional PCR is eliminating the need for cycling of temperatures, thereby allowing the use of simple, miniature, and affordable amplification devices, in addition to requiring lower energy consumption²². These features render LAMP assays suitable for use in resource-limited rural areas. Moreover, these advantages make LAMP a promising approach for realizing in-field and rapid detection and avoiding cumbersome transportation from sampling sites to specialized laboratories, as is necessary for conventional PCR detection of *nirS* gene from environmental samples^{3–5,11–14}.

PCR products are typically characterized by gel electrophoresis^{5,13,45} or otherwise via quantification with fluorescent probes^{5,44,45}. In contrast, more quantification approaches can be employed to determine LAMP product amplification, including both endpoint and online patterns. Gel electrophoresis and GeneFinder characterization are both endpoint analyses that are appropriate for LAMP detection, as shown here and elsewhere. In addition, several alternative endpoint methods can be used, including assays with SYBR Green I, Quant-iT PicoGreen, and polyethylenimine, among others. Further, the large amount of white precipitate that is the product of insoluble magnesium pyrophosphate can be used to determine LAMP reaction success with or without centrifugation²². Online characterization methods can also be used to assess LAMP amplification success including the use of turbidimeters, optical fibers, or spectrophotometers that can monitor LAMP reaction progress based on the formation of magnesium pyrophosphate^{21,22,34}. Consequently, the addition of special indicator reagents is unnecessary, further reducing reagent and labor costs. Importantly, instruments for real-time monitoring of LAMP amplification are already commercially available.

The results reported here indicate that conventional PCR assays of *nirS* gene required more than 18.7 fg of template DNA for each reaction, which is consistent with results from Li et al.⁴⁷ In contrast, the LAMP assay results reported here demonstrate a LOD of 1.87 pg/reaction, indicating a significantly higher sensitivity than conventional PCR, which agrees with previous reports^{19,28}. Moreover, *nirS* gene detection with conventional PCR assays required cell lysis and subsequent DNA extraction^{5,45}. Consistent with these observations, we found that PCR amplification could not occur using bacterial cells as the amplification template. DNA extraction, PCR reactions, and electrophoresis typically require > 1 h each, and all of these procedures require bulky, specialized equipment. Performing real-time quantitative PCR is much quicker than traditional PCR due to the measurement of reaction results in real time. However, qPCR necessitates expensive probes, even more sophisticated equipment than traditional PCR and is still time consuming. Consequently, conventional and real-time PCR assays are not amenable to detection of *nirS* gene in point-of-care settings. LAMP has the potential to circumvent these problems due to a reduced dependence on pretreatment of samples and the ability to conduct LAMP under isothermal condition^{18,22}. In particular, the efficacy of cell-template based LAMP assay considerably enhances its application in point-of-care settings^{26,31,32}. For example, we successfully detected *nirS* gene of *P. aeruginosa* cells over a range of 3.36×10^2 – 3.36×10^8 CFU/reaction. These results further confirm that LAMP assays are less affected by substances that typically inhibit conventional PCR^{23,34}. Consequently, simpler LAMP assays can be developed by eliminating the DNA extraction step that is necessary prior to conventional PCRs. Further, only 1 h was needed from the addition of template bacterial cells to amplification verification without the need for bulky and sophisticated equipment. Moreover, *nirS* gene of *P. aeruginosa* could be detected in spiked seawater samples with either DNA template or bacterial cells template, further demonstrating the practicality of the LAMP assays, even in complex background matrices. It should be noted, however, that sensitivity of the LAMP assay was clearly affected by the presence of complex co-existing substances in the seawater.

Future investigations of *nirS* amplification via LAMP assays will focus on improving the assays through three target areas. First, the specificity of the LAMP assay towards *nirS* from more taxa will be tested to determine

its capacity for analyzing denitrifier communities, in general. Second, methods will be developed to eliminate interference from dead cells and extracellular DNA, because only gene expression from viable cells is meaningful towards understanding functional protein expression and consequent denitrification activity. Lastly, a quantitative LAMP assay will be developed to determine the relationship between *nirS* gene copy abundance in viable microbial cells and denitrifying efficiency.

Conclusions

Herein, a rapid and specific detection of *nirS* gene with LAMP assay was developed for the first time, using the gel electrophoresis or GeneFinder visualization to characterize amplification products. Under optimized conditions, the LOD of DNA-template based LAMP assay was 1.87 pg/reaction, which was an order of magnitude lower than that obtained by conventional PCR assays; while the LOD of cell-template based LAMP assay was 3.36×10^2 CFU/reaction. Only 1 h was needed from the addition of bacterial cells to the reaction to the verification of amplification success, requiring no bulky and sophisticated equipment. Their practicality using environmental samples was preliminarily demonstrated using seawater samples spiked with genomic DNA or *P. aeruginosa* cells. Overall, the LAMP assays presented here, particularly the cell-template based one, were superior to conventional PCR assays in terms of sensitivity, specificity, turnover-time, simplicity, and cost. Importantly, they are ready for in-field applications.

Received: 15 April 2019; Accepted: 15 September 2020

Published online: 05 October 2020

References

- Gruber, N. & Galloway, J. N. An earth-system perspective of the global nitrogen cycle. *Nature* **451**, 293–296 (2008).
- Throckmold, I. N. *et al.* Reassessing PCR primers targeting *nirS*, *nirK* and *nosZ* genes for community surveys of denitrifying bacteria with DGGE. *Fems. Microbiol. Ecol.* **49**(3), 401–417 (2004).
- Braker, G. *et al.* Nitrite reductase genes (*nirK* and *nirS*) as functional markers to investigate diversity of denitrifying bacteria in Pacific northwest marine sediment communities. *Appl. Environ. Microb.* **66**(5), 2096–2104 (2000).
- Francis, C. A., O'Mullan, G. D., Cornwell, J. C. & Ward, B. B. Transitions in *nirS*-type denitrifier diversity, community composition, and biogeochemical activity along the Chesapeake Bay estuary. *Front. Microbiol.* **4**, 237–237 (2013).
- Zheng, Y. *et al.* Diversity, abundance, and distribution of *nirS*-Harboring denitrifiers in intertidal sediments of the Yangtze Estuary. *Microb. Ecol.* **70**, 30–40 (2015).
- Zumft, W. G. Cell biology and molecular basis of denitrification. *Microbiol. Mol. Biol. Rev.* **61**, 533–616 (1997).
- Pratscher, J., Stichternoth, C., Fichtl, K., Schleifer, K. & Braker, G. Application of recognition of individual genes-fluorescence in situ hybridization (RING-FISH) to detect nitrite reductase genes (*nirK*) of denitrifiers in pure cultures and environmental samples. *Appl. Environ. Microb.* **75**, 802 (2009).
- Heylen, K. *et al.* The incidence of *nirS* and *nirK* and their genetic heterogeneity in cultivated denitrifiers. *Environ. Microbiol.* **8**(11), 2012–2021 (2006).
- Yoshida, M., Ishii, S. & Otsuka, S. *nirK*-harboring denitrifiers are more responsive to denitrification-inducing conditions in rice paddy soil than *nirS*-harboring bacteria. *Microb. Environ.* **25**(1), 45–48 (2010).
- Jones, C. M., Stres, B., Rosenquist, M. & Hallin, S. Phylogenetic analysis of nitrite, nitric oxide, and nitrous oxide respiratory enzymes reveal a complex evolutionary history for denitrification. *Mol. Biol. Evol.* **25**(9), 1955–1966 (2008).
- Yang, Y. *et al.* Response of bacteria harboring *nirS* and *nirK* genes to different N fertilization rates in an alkaline northern Chinese soil. *Eur. J. Soil. Biol.* **82**, 1–9 (2017).
- Priemé, A., Braker, G. & Tiedje, M. Diversity of nitrite reductase (*nirK* and *nirS*) gene fragments in forested upland and wetland soils. *Appl. Environ. Microb.* **68**(4), 1893–1900 (2002).
- Braker, G., Fesefeldt, A. & Witzel, K. P. Development of PCR primer systems for amplification of nitrite reductase genes (*nirK* and *nirS*) to detect denitrifying bacteria in environmental samples. *Appl. Environ. Microb.* **64**(10), 3769–3775 (1998).
- Harbi, B., Chaieb, K., Jabeur, C. & Bakhrouf, A. PCR detection of nitrite reductase genes (*nirK* and *nirS*) and use of active consortia of constructed ternary adherent staphylococcal cultures via mixture design for a denitrification process. *World J. Microb. Biotechnol.* **26**(3), 473–480 (2010).
- Jayakumar, A., O'Mullan, G. D., Naqvi, S. W. A. & Ward, B. B. Denitrifying bacterial community composition changes associated with stages of denitrification in oxygen minimum zones. *Microb. Ecol.* **58**(2), 350–362 (2009).
- Simth, J., Wagner-Riddle, C. & Dunfield, K. Season and management related changes in the diversity of nitrifying and denitrifying bacteria over winter and spring. *Appl. Soil Ecol.* **44**(2), 138–146 (2010).
- Taroncher-Oldenburg, G., Griner, E. M., Francis, C. A. & Ward, B. B. Oligonucleotide microarray for the study of functional gene diversity in the nitrogen cycle in the environmental. *Appl. Environ. Microb.* **69**(2), 1159–1171 (2003).
- Zhao, Y., Chen, F., Li, Q., Wang, L. & Fan, C. Isothermal amplification of nucleic acids. *Chem. Rev.* **115**, 12491–12545 (2015).
- Verma, S. *et al.* Development of a rapid loop-mediated isothermal amplification assay for diagnosis and assessment of cure of Leishmania infection. *BMC Infect. Dis.* **17**(1), 223 (2017).
- Notomi, T., Okayama, H., Masubuchi, H., Yonekawa, T. & Watanabe, K. Loop-mediated isothermal amplification of DNA. *Nucleic Acids. Res.* **28**(12), e63 (2000).
- Su, Y. *et al.* Establishment of the molecular beacon-loop-mediated isothermal amplification method for the rapid detection of *Porphyromonas gingivalis*. *J. Microbiol. Methods* <https://doi.org/10.1016/j.mimet.01.013> (2019) (in press).
- Zhang, X., Lowe, S. B. & Gooding, J. J. Brief review of monitoring methods for loop-mediated isothermal amplification (LAMP). *Biosens. Bioelectron.* **61**, 491–499 (2014).
- Abdul-Ghani, R., Al-Mekhlafi, A. M. & Karanis, P. Loop-mediated isothermal amplification (LAMP) for malarial parasites of humans: would it come to clinical reality as a point-of-care test?. *Acta Trop.* **122**(3), 233–240 (2012).
- Safavieh, M., Kanakasabapathy, M. K., Tarlan, F., Ahmed, M. U. & Zourob, M. Emerging loop-mediated isothermal amplification-based microchip and microdevice technologies for nucleic acid detection. *ACS Biomater. Sci. Eng.* **2**(3), 278 (2016).
- Njiru, Z. K. Loop-mediated isothermal amplification technology: towards point of care diagnostics. *PLoS Negl. Trop. Dis.* **6**(6), e1572 (2012).
- Williams, M. R., Stedtfeld, R. D., Waseem, H., Stedtfeld, T. & Upham, B. Implications of direct amplification for measuring antimicrobial resistance using point-of-care devices. *Anal. Methods* **9**(8), 1229–1241 (2017).

27. Lee, D., Kim, Y. T., Lee, J. W., Kim, D. H. & Seo, T. S. An integrated direct loop-mediated isothermal amplification microdevice incorporated with an immunochromatographic strip for bacteria detection in human whole blood and milk without a sample preparation step. *Biosens. Bioelectron.* **79**, 273–279 (2016).
28. Koizumi, N., Nakajima, C., Harunari, T., Tanikawa, T. & Tokiwa, T. A new loop-mediated isothermal amplification method for rapid, simple, and sensitive detection of *Leptospira* spp. in urine. *J. Clin. Microbiol.* **50**(6), 2072–2074 (2012).
29. Soejima, M., Egashira, K., Kawano, H., Kawaguchi, A. & Sagawa, K. Rapid detection of haptoglobin gene deletion in alkaline-denatured blood by loop-mediated isothermal amplification reaction. *J. Mol. Diagn.* **13**(3), 334–339 (2011).
30. Kim, M. J. & Kim, H. Y. Direct duplex real-time loop mediated isothermal amplification assay for the simultaneous detection of cow and goat species origin of milk and yogurt products for field use. *Food. Chem.* **246**, 26–31 (2018).
31. Kanitkar, Y. H., Stedtfeld, R. D., Hatzinger, P. B., Hashsham, S. A. & Cupples, A. M. Development and application of a rapid, user-friendly, and inexpensive method to detect *Dehalococcoides* sp. reductive dehalogenase genes from groundwater. *Appl. Microbiol. Biotechnol.* **101**(11), 1–9 (2017).
32. Stedtfeld, R. D., Stedtfeld, T. M., Samhan, F., Kanitkar, Y. H. & Hatzinger, P. B. Direct loop mediated isothermal amplification on filters for quantification of *Dehalobacter* in groundwater. *J. Microbiol. Methods* **131**, 61–67 (2016).
33. Zhang, X. *et al.* Recording the reaction process of loop-mediated isothermal amplification (LAMP) by monitoring the voltammetric response of 2'-deoxyguanosine 5'-triphosphate. *Electroanalysis* **23**, 2438–2445 (2011).
34. Zhang, X. *et al.* Monitoring the progression of loop-mediated isothermal amplification (LAMP) using conductivity. *Anal. Biochem.* **466**, 16–18 (2014).
35. Calmels, S., Ohshima, H., Henry, Y. & Bartsch, H. Characterization of bacterial cytochrome cd1-nitrite reductase as one enzyme responsible for catalysis of nitrosation of secondary amines. *Carcinogenesis* **17**(3), 533–536 (1996).
36. Lin, H. L. *et al.* Revisiting with a relative-density calibration approach the determination of growth rates of microorganisms by use of optical density data from liquid cultures. *Appl. Environ. Microb.* **76**(5), 1683–1685 (2010).
37. Zhang, X. *et al.* Online monitoring of bacterial growth with electrical sensor. *Anal. Chem.* **90**(10), 6006–6011 (2018).
38. Feng, J., Dai, Z., Tian, X. & Jiang, X. Detection of *Listeria monocytogenes* based on combined aptamers magnetic capture and loop-mediated isothermal amplification. *Food Control* **85**, 443–452 (2018).
39. Tomita, N., Mori, Y., Kanda, H. & Notomi, T. Loop-mediated isothermal amplification (LAMP) of gene sequences and simple visual detection of products. *Nat. Protoc.* **3**(5), 877–882 (2008).
40. Balbin, M. M., Belotindos, L. P., Abes, N. S. & Mingala, C. N. Caprine arthritis encephalitis virus detection in blood by loop-mediated isothermal amplification (LAMP) assay targeting the proviral gag region. *Diagn. Microbiol. Infect. Dis.* **79**(1), 37–42 (2014).
41. Zhang, X. *et al.* Quantitative determination of target gene with electrical sensor. *Sci. Rep. UK* **5**, 12539 (2015).
42. Mori, Y., Kitao, M., Tomita, N. & Notomi, T. Real-time turbidimetry of LAMP reaction for quantifying template DNA. *J. Biochem. Biophys. Methods* **59**(2), 145–157 (2004).
43. Chen, Y. *et al.* Nitrite reductase genes as functional markers to investigate diversity of denitrifying bacteria during agricultural waste composting. *Appl. Microbiol. Biotechnol.* **98**(9), 4233–4243 (2014).
44. Gomes, J., Khandeparker, R., Bandekar, M., Meena, R. M. & Ramaiah, N. Quantitative analyses of denitrifying bacterial diversity from a seasonally hypoxic monsoon governed tropical coastal region. *Deep Sea Res. Part II* **156**, 34–43 (2017).
45. Gao, J. *et al.* *nirS*-Encoding denitrifier community composition, distribution, and abundance along the coastal wetlands of China. *Appl. Microbiol. Biotechnol.* **100**(19), 1–10 (2016).
46. Li, M., Hong, Y., Cao, H. & Gu, J. Community structures and distribution of anaerobic ammonium oxidizing and *nirS*-encoding nitrite-reducing bacteria in surface sediments of the south china sea. *Microb. Ecol.* **66**(2), 281–296 (2013).
47. Hallin, S. & Lindgren, P. E. PCR detection of genes encoding nitrite reductase in denitrifying bacteria. *Appl. Environ. Microb.* **65**(4), 1652–1657 (1999).

Acknowledgements

This work was supported by the Central Public-interest Scientific Institution Basal Research Fund, CAFS (No. 2019ZD0101) and the Special Scientific Research Funds for Central Non-profit Institutes, the Yellow Sea Fisheries Research Institute, Chinese Academy of Fishery Sciences (20603022018020).

Author contributions

Conceived and designed the experiments: X.Z., Q.Y., Q.Z. and X.J. Performed the experiments: X.Z., Q.Y., X.W., Y.L. and J.Z. Prepared figures: X.Z. and Q.Y. Wrote the paper: X.Z. and K.Q.

Competing interests

The authors declare no competing interests.

Additional information

Supplementary information is available for this paper at <https://doi.org/10.1038/s41598-020-73304-9>.

Correspondence and requests for materials should be addressed to K.Q.

Reprints and permissions information is available at www.nature.com/reprints.

Publisher's note Springer Nature remains neutral with regard to jurisdictional claims in published maps and institutional affiliations.



Open Access This article is licensed under a Creative Commons Attribution 4.0 International License, which permits use, sharing, adaptation, distribution and reproduction in any medium or format, as long as you give appropriate credit to the original author(s) and the source, provide a link to the Creative Commons licence, and indicate if changes were made. The images or other third party material in this article are included in the article's Creative Commons licence, unless indicated otherwise in a credit line to the material. If material is not included in the article's Creative Commons licence and your intended use is not permitted by statutory regulation or exceeds the permitted use, you will need to obtain permission directly from the copyright holder. To view a copy of this licence, visit <http://creativecommons.org/licenses/by/4.0/>.

© The Author(s) 2020