







OPEN **Author Correction: Grazing enhances species diversity in grassland communities**

Muhammad Almaududi Pulungan, Shota Suzuki, Maica Krizna Areja Gavina, Jerrold M. Tubay , Hiromu Ito , Momoka Nii, Genki Ichinose, Takuya Okabe , Atsushi Ishida, Masae Shiyomi, Tatsuya Togashi, Jin Yoshimura  & Satoru Morita 

Correction to: *Scientific Reports* <https://doi.org/10.1038/s41598-019-47635-1>, published online 01 August 2019

This Article contains errors.

In the Methods, under the Lattice Model subheading, the sentence,

"In the first (second) case, the grazing intensity is strongest for the weakest (strongest) of 20 species."

should read:

"In the first (second) case, the grazing intensity is strongest for the strongest (weakest) of 20 species."

In Supplementary Figure 4a, the data for $G = 0.5$ was not included. In Supplementary Figure 4b, the data was plotted incorrectly at $G = 0.5$, and error bars were not included. The correct Supplementary Figure 4 appears below as Figure 1.

Published online: 22 July 2020

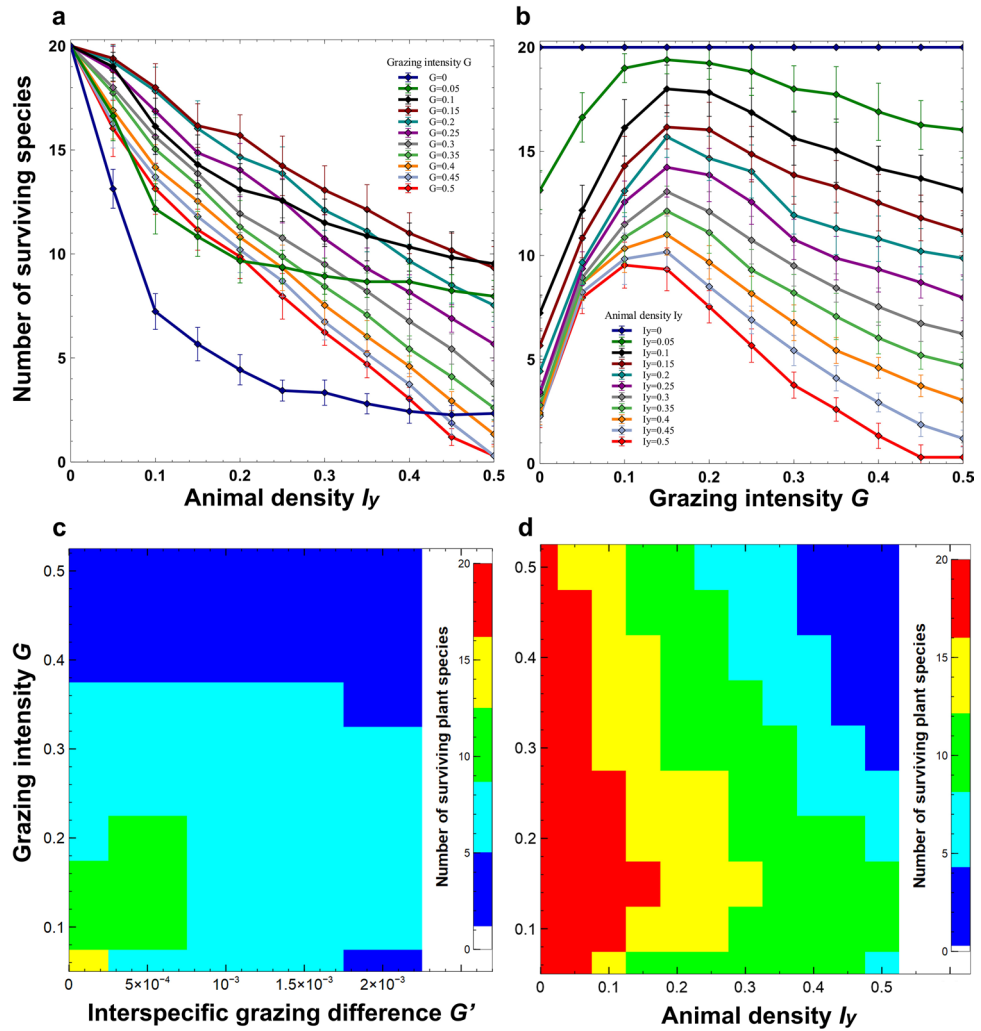



Figure 1.

 **Open Access** This article is licensed under a Creative Commons Attribution 4.0 International License, which permits use, sharing, adaptation, distribution and reproduction in any medium or format, as long as you give appropriate credit to the original author(s) and the source, provide a link to the Creative Commons license, and indicate if changes were made. The images or other third party material in this article are included in the article's Creative Commons license, unless indicated otherwise in a credit line to the material. If material is not included in the article's Creative Commons license and your intended use is not permitted by statutory regulation or exceeds the permitted use, you will need to obtain permission directly from the copyright holder. To view a copy of this license, visit <http://creativecommons.org/licenses/by/4.0/>.

© The Author(s) 2020