


OPEN

Author Correction: Immunotoxicological impact and biodistribution assessment of bismuth selenide (Bi₂Se₃) nanoparticles following intratracheal instillation in mice

Vani Mishra , Vikas Baranwal , Rohit K. Mishra, Shivesh Sharma, Bholanath Paul & Avinash C. Pandey

Correction to: *Scientific Reports* <https://doi.org/10.1038/s41598-017-18126-y>, published online 21 December 2017

This Article contains errors in Figure 4, where the photomicrographs of representative sections of lungs shown in panels a, c, d and e are incorrect due to misfiling of the data. The correct Figure 4 appears below as Figure 1.

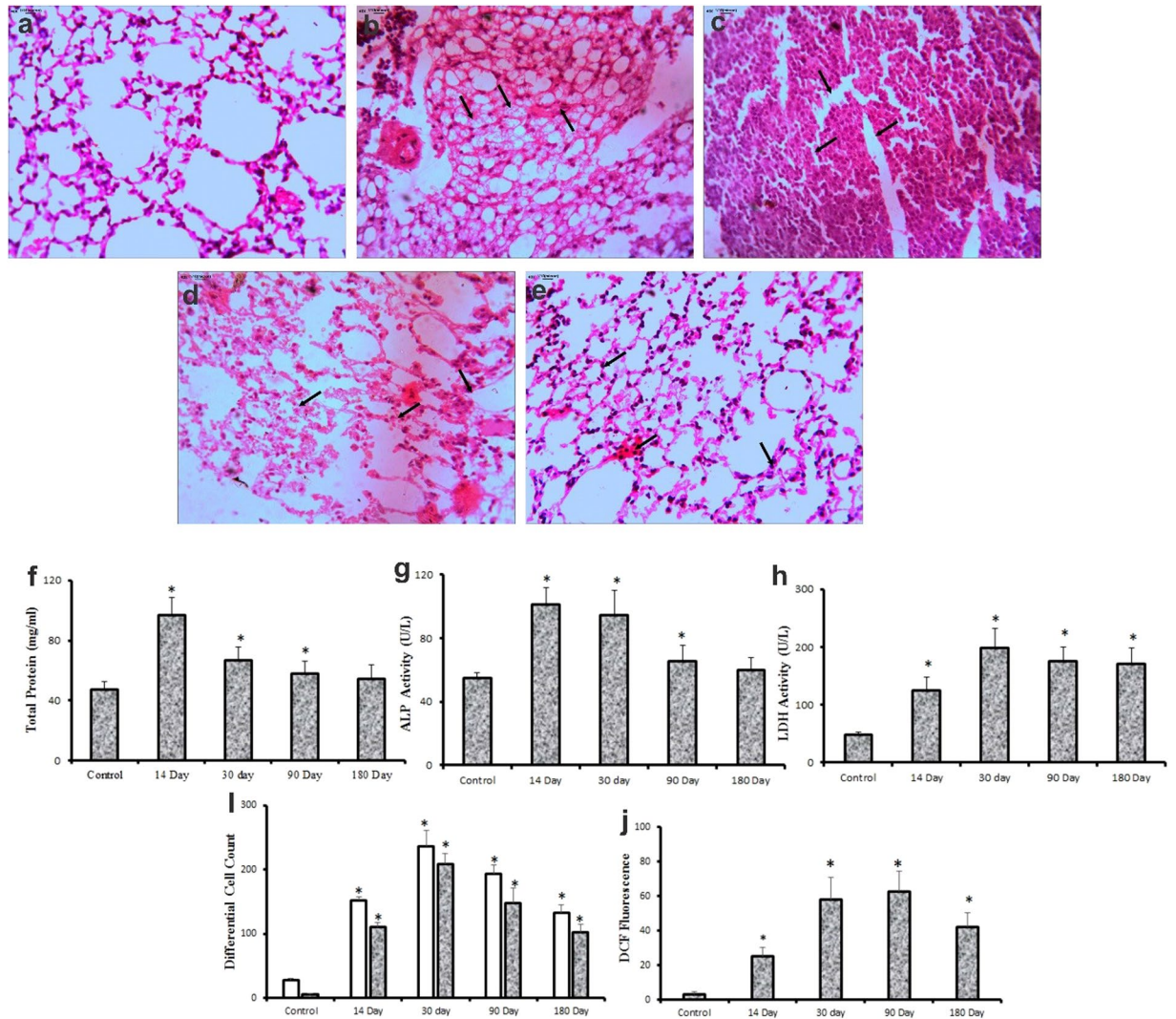


Figure 1.

Open Access This article is licensed under a Creative Commons Attribution 4.0 International License, which permits use, sharing, adaptation, distribution and reproduction in any medium or format, as long as you give appropriate credit to the original author(s) and the source, provide a link to the Creative Commons license, and indicate if changes were made. The images or other third party material in this article are included in the article's Creative Commons license, unless indicated otherwise in a credit line to the material. If material is not included in the article's Creative Commons license and your intended use is not permitted by statutory regulation or exceeds the permitted use, you will need to obtain permission directly from the copyright holder. To view a copy of this license, visit <http://creativecommons.org/licenses/by/4.0/>.

© The Author(s) 2020