

OPEN

# Author Correction: Connexin 32-mediated cell-cell communication is essential for hepatic differentiation from human embryonic stem cells

Jinhua Qin, Mingyang Chang, Shuyong Wang, Zhenbo Liu, Wei Zhu, Yi Wang, Fang Yan, Jian Li, Bowen Zhang, Guifang Dou, Jiang Liu, Xuetao Pei & Yunfang Wang

Correction to: *Scientific Reports* <https://doi.org/10.1038/srep37388>, published online 22 November 2016

This Article contains errors in Figure 5c. The panel for Dil-ac-LDL and panel for Oil red O in the VK2-treated group were prepared incorrectly due to misfiling of data. In addition, there are errors in the length of the scale bars.

As a result, the legend for Figure 5c,

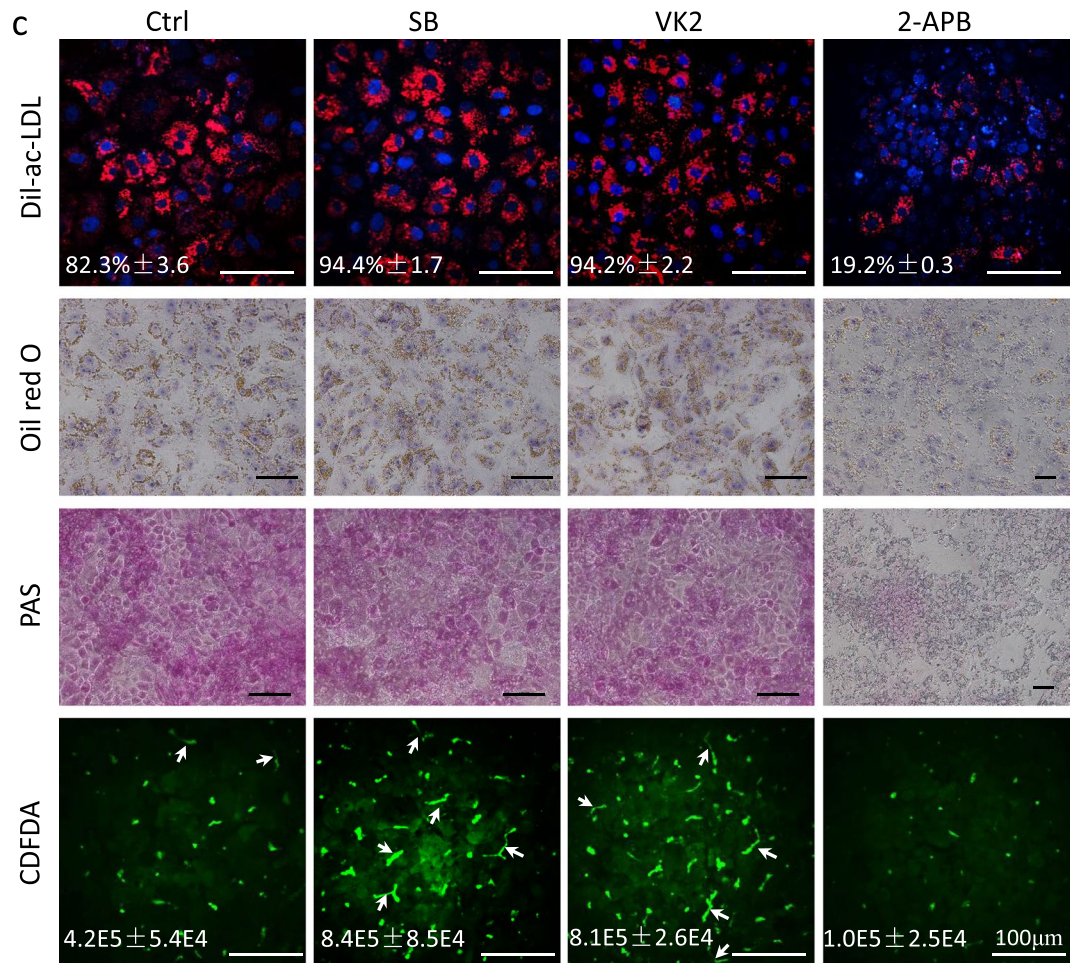
“(c) Dil-ac-LDL uptake, oil red O staining, PAS staining, and CDFDA staining of hESC-Heps induced with SB, VK2 or 2-APB. Staining intensity was normalized to cell number. Scale bars, 50  $\mu\text{m}$ . Data represent mean  $\pm$  SEM. \*\* $P < 0.01$ , \*\*\* $P < 0.001$ .”

should read:


“(c) Dil-ac-LDL uptake, oil red O staining, PAS staining, and CDFDA staining of hESC-Heps induced with SB, VK2 or 2-APB. Staining intensity was normalized to cell number. Scale bars, 100  $\mu\text{m}$ . Data represent mean  $\pm$  SEM. \*\* $P < 0.01$ , \*\*\* $P < 0.001$ .”

The correct Figure 5c and accompanying figure legend appear below as Figure 1.

Published: 06 April 2020



**Figure 1.** (c) Dil-ac-LDL uptake, oil red O staining, PAS staining, and CDFDA staining of hESC-Heps induced with SB, VK2 or 2-APB. Staining intensity was normalized to cell number. Scale bars, 100  $\mu$ m. Data represent mean  $\pm$  SEM. \*\* $P < 0.01$ , \*\*\* $P < 0.001$ .

 **Open Access** This article is licensed under a Creative Commons Attribution 4.0 International License, which permits use, sharing, adaptation, distribution and reproduction in any medium or format, as long as you give appropriate credit to the original author(s) and the source, provide a link to the Creative Commons license, and indicate if changes were made. The images or other third party material in this article are included in the article's Creative Commons license, unless indicated otherwise in a credit line to the material. If material is not included in the article's Creative Commons license and your intended use is not permitted by statutory regulation or exceeds the permitted use, you will need to obtain permission directly from the copyright holder. To view a copy of this license, visit <http://creativecommons.org/licenses/by/4.0/>.

© The Author(s) 2020