


OPEN

Author Correction: Combination of chick embryo and nutrient mixture prevent D-galactose-induced cognitive deficits, immune impairment and oxidative stress in aging rat model

Jia Ma, Huaxin Wang, Bing Liu, Yujia Shan, Huimin Zhou, Xia Qi, Wenguo Wu & Li Jia 

Correction to: *Scientific Reports* <https://doi.org/10.1038/s41598-019-40953-4>, published online 11 March 2019

This Article contains errors, whereby Figure 2 was misassembled. As a result, the following panels are incorrect:

The kidney and hippocampus images in the Control group

The liver, kidney and hippocampus images in the D-gal group

The hippocampus and skin images in the D-gal+CE+NM group

The liver and kidney images in the D-gal+CE group

The kidney and skin images in the D-gal+NM group

The correct Figure 2 appears below as Figure 1.

These changes do not affect the conclusions of the Article.

Published online: 13 March 2020

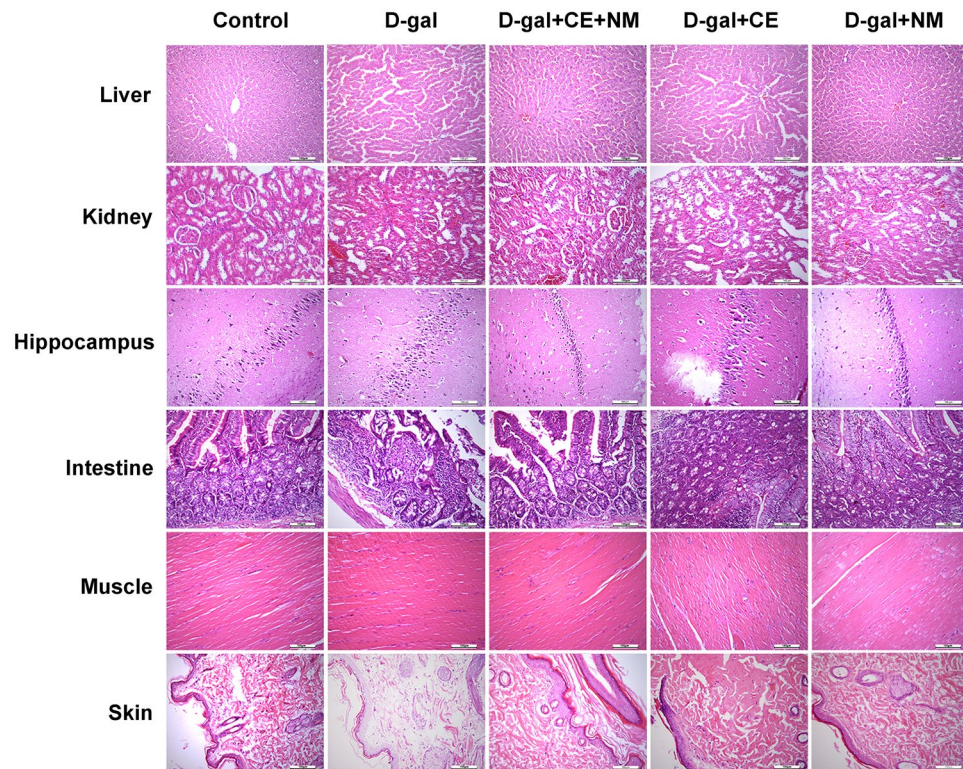



Figure 1.

 **Open Access** This article is licensed under a Creative Commons Attribution 4.0 International License, which permits use, sharing, adaptation, distribution and reproduction in any medium or format, as long as you give appropriate credit to the original author(s) and the source, provide a link to the Creative Commons license, and indicate if changes were made. The images or other third party material in this article are included in the article's Creative Commons license, unless indicated otherwise in a credit line to the material. If material is not included in the article's Creative Commons license and your intended use is not permitted by statutory regulation or exceeds the permitted use, you will need to obtain permission directly from the copyright holder. To view a copy of this license, visit <http://creativecommons.org/licenses/by/4.0/>.

© The Author(s) 2020