

OPEN

Author Correction: Genome-wide identification of Major Intrinsic Proteins in *Glycine soja* and characterization of GmTIP2;1 function under salt and water stress

Da-yong Zhang, Manoj Kumar, Ling Xu, Qun Wan, Yi-hong Huang, Zhao-Long Xu, Xiao-Lan He, Jin-Biao Ma, Girdhar K. Pandey  & Hong-Bo Shao

Correction to: *Scientific Reports* <https://doi.org/10.1038/s41598-017-04253-z>, published online 23 June 2017

This Article contains errors in Figure 4a, where the GmPIP2;1 gel panels of *Glycine max* root, *Glycine max* leaf and *Glycine soja* leaf were mistakenly duplicated. These gel panels have now been corrected. The correct Figure 4 appears below as Figure 1.

Published online: 06 February 2020

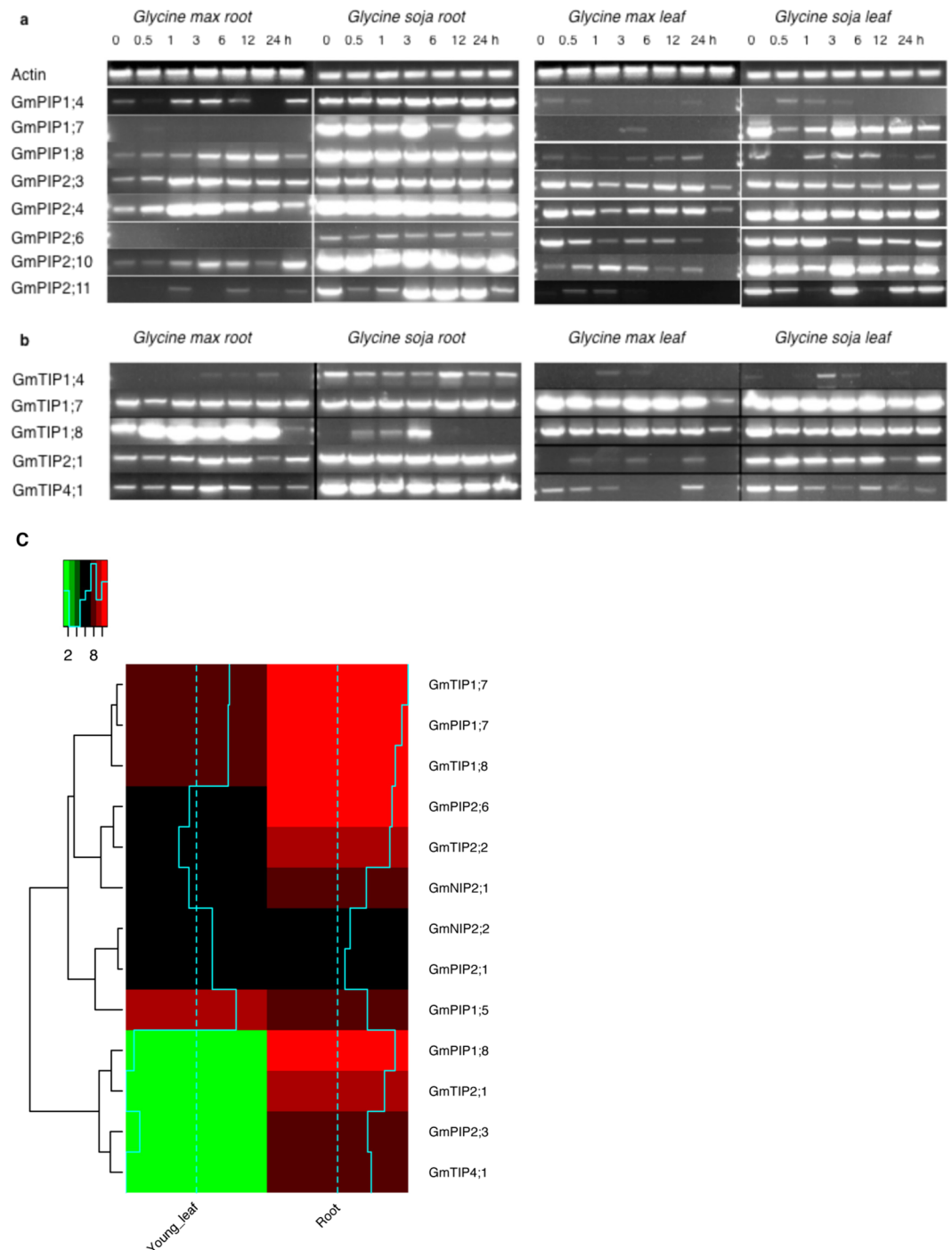



Figure 1.

 **Open Access** This article is licensed under a Creative Commons Attribution 4.0 International License, which permits use, sharing, adaptation, distribution and reproduction in any medium or format, as long as you give appropriate credit to the original author(s) and the source, provide a link to the Creative Commons license, and indicate if changes were made. The images or other third party material in this article are included in the article's Creative Commons license, unless indicated otherwise in a credit line to the material. If material is not included in the article's Creative Commons license and your intended use is not permitted by statutory regulation or exceeds the permitted use, you will need to obtain permission directly from the copyright holder. To view a copy of this license, visit <http://creativecommons.org/licenses/by/4.0/>.

© The Author(s) 2020