

SCIENTIFIC REPORTS



OPEN

Potassium-rich brine deposit in Lop Nor basin, Xinjiang, China

Ming-guang Sun & Li-chun Ma

Lop Nor potash deposit is the largest sulfate-type liquid potassium salt deposit in China, consisting of three areas: Xinqing platform, Luobei depression, and Tenglong platform. In this study, the geological background, basin structure, and fracture system of the deposit, along with the brine storage size of the three ore bodies are introduced in detail, using underground brine elevation models of the mining areas. We collected 91 samples of brine from long-term observation boreholes in the Lop Nor ore district, and analyzed their ion contents. The KCl content of the brine varies from 1% to 1.45% and that of B_2O_3 varies from 1900 to 4500 mg/L, which are higher than the cut-off for Chinese industrial mining grades. The spatial distributions of KCl and B_2O_3 contents in different ore beds were plotted, and the distributions of different grades of K^+ and B^{3+} were revealed.

Global potash resource reserves are rich, estimated at 250 billion tons (K_2O)¹, but most are subsurface solid minerals of marine origin. Although potassium resources are abundant, their distribution is uneven. Potash deposits are mainly found in Europe, North America, Central Asia, and Southeast Asia. China's potash resources account for only 1.8% of the world's potassium reserves². China is also a large agricultural country, where fertilizer application has been ranked first in the world. Potash fertilizer consumption in China has reached 10 million tonnes per year. In 2014, China's potash production was 4,300,000 t³, leaving a large gap between output and consumption, which although increases the value of domestic potash resources also resulted in the importation of large quantities of potassium resources.

Solid potassium deposits are only found in the Mengyejing potassium deposit in Yunnan, China, with proven KCl reserves of 16.76 Mt⁴. Total proven reserves of potash in China are 0.99 Gt (KCl)⁵, of which brine type potash resources account for more than 98% of the total. Brine deposits are mainly distributed in the Qaidam Basin of Qinghai and the Lop Nor Basin in Xinjiang. The Lop Nor Basin is a Quaternary dry saline lake, located in a low-lying area at the eastern edge of the Tarim Basin in Xinjiang, with coordinate ranges of 39° to 41°N and 88° to 92°E (Fig. 1A). Since the 1995 discovery of the Lop Nor potassium-rich brine deposit, the amount of potassium chloride resources has been proven up to 145 Mt⁶. The Lop Nor deposit is the second largest brine potash deposit after that of the Qaidam Basin in Qinghai, China. Previous studies have been done on glauberite ($CaSO_4 \cdot Na_2SO_4$) reservoir characteristics of brine potash deposits at Lop Nor⁷, chemistry of the potassium-rich brine^{8–10}, and brine mining technology^{11–15}, but studies of spatial distribution and geochemical characteristics of the Lop Nor deposit are less common. This paper introduces metallogenic geological background and distribution characteristics of ore bodies in the Lop Nor potassium-rich deposit. The spatial distribution of ore bed geochemistry and spatial enrichment trends of K and B are introduced through brine data from 91 drill holes, providing a basis for development and use of potash deposits in the Lop Nor basin.

Research Area Overview

The Lop Nor basin is a secondary fault depression tectonic basin in the eastern Tarim Basin¹⁶, Central Asia's largest inland basin. Its development was controlled by different periods of tectonism. At the end of the Neogene, Himalayan movement caused the western Tarim Basin to uplift and the eastern part to sink, tilting the terrain from southwest to northeast as the elevation decreased from 1400 m to 800 m. Lop Nor is located at the lowest elevation in the basin, also known as the Lop Nor depression. This is why Lop Nor has become a catchment area, providing abundant source material for brine deposit formation. The Lop Nor area experienced complex tectonic movements from the Cretaceous to the Tertiary¹⁷, and is now surrounded by mountains on three sides (Fig. 1), which create a closed hydrological environment for brine deposit formation. The region has an arid continental climate and is one of the driest regions in the world, with annual rainfall of less than 20 mm and annual evaporation of approximately 3500 mm¹⁰. The annual average daily air temperature is 11.6 °C, with the highest temperatures reaching 50 °C and daily temperature differences of up to 25 °C. These high temperatures and long periods

MLR Key Laboratory of Metallogeny and Mineral Assessment, Institute of Mineral Resources, CAGS, Beijing, 100037, China. Correspondence and requests for materials should be addressed to L.-c.M. (email: mlichun@cags.ac.cn)

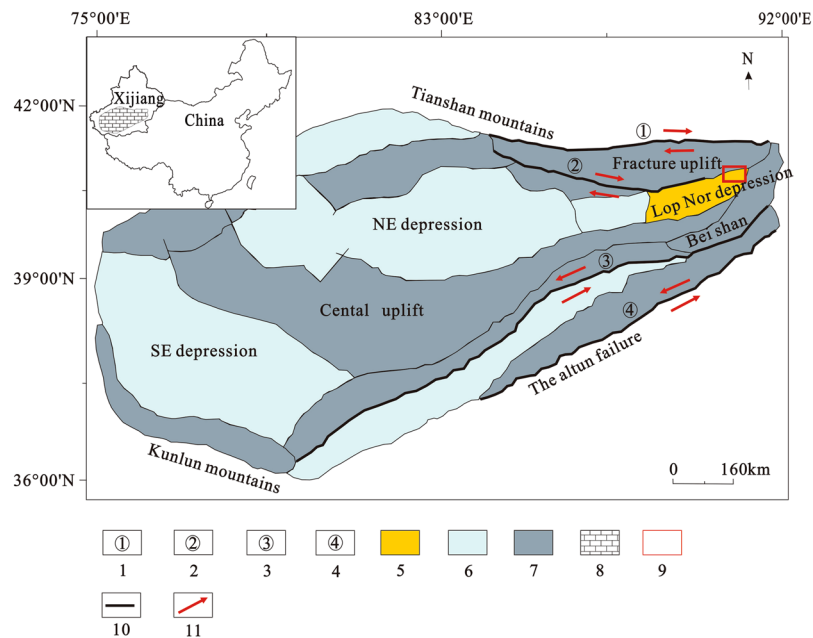


Figure 1. Structural map of the Tarim Basin in Xinjiang, China²¹. 1. Xing Di Dextral fracture, 2. Konqi River Dextral fracture, 3. Cheerchen Sinistral fracture, 4. Altun Sinistral fracture, 5. Lop Nor sub-basin, 6. Depression, 7. Uplift, 8. Tarim Basin, 9. Research area, 10. Fracture, 11. Strike-slip directions.

of daylight are beneficial to the formation of evaporite minerals¹⁸ and are also favorable conditions for Lop Nor to become a salt deposition center. In this area, the prevailing winds are mainly from the east and northeast¹⁹. Average annual wind speed is 5.5 m/s, with maximum wind speed of up to 45 m/s, so wind erosion is strong and evidence can be seen everywhere of Quaternary erosional landforms called Yadan. The combination of structure, climate, and source supply in the Lop Nor area make the basin the largest production area for brine-type potash in China.

Research Techniques

Sampling method. The Lop Nor potassium-rich brine deposit consists of three mining areas—the Tenglong platform, Luobei depression, and Xinqing platform. In July and August, 2016, we collected brine samples from 22 drill holes in Tenglong platform, 43 in the Luobei depression, and 26 in the Xinqing platform. *In situ* measurements of brine burial depth, density and pH were made; GPS was used for geolocation and elevation measurements. Two sample bottles (white plastic) were used to collect 500 ml of brine per hole. To prevent evaporation of the brine in the extreme arid climate or leaks during transportation, bottles were sealed quickly with tape after sampling. Locations of the three mining areas are shown in Fig. 2, and the sampling points are shown in Fig. 3.

Analytical and mapping methods. Main elements Na^+ , K^+ , Mg^{2+} , Ca^{2+} , Cl^- , SO_4^{2-} , CO_3^{2-} , and HCO_3^- and trace elements Li^+ , B^{3+} , Br^- , I^- , Rb^+ , Cs^+ , and Sr^{2+} were tested and analyzed in the brine samples. Na^+ , K^+ , Mg^{2+} , Ca^{2+} , Sr^{2+} , Rb^+ , Li^+ , Cs^+ were determined by atomic absorption spectrophotometry (error less than 2%). Br^- , I^- , CO_3^{2-} , HCO_3^- , and Cl^- were tested by conventional titration (error less than 5%). SO_4^{2-} and B^{3+} were tested by visible light spectrophotometer (error less than 1%).

Sampling point location maps, elevation contour maps of the mining areas, and geochemical spatial distribution maps of brine in different ore beds were undertaken with Surfer 11 software²⁰.

Results and Discussion

Mining area structures. The Lop Nor basin is situated in the eastern part of the Tarim Basin, at the junction of the Beishan terrane and eastern Tianshan fold belts (Fig. 1) where tectonic movements were strong and folds, fractures, joints, and fissures are well developed. In this area, the main fractures are the XingDi dextral fracture, Konqi River dextral fracture, Cheerchen sinistral fracture, and Altun sinistral fracture²¹. The study area is located in the northern Lop Nor basin (Fig. 1). Boundaries of each mining area and the brine storage layers are controlled by five faults²². The F1 tensional fault marks the border between the Luobei depression and Xinqing platform, with a strike of 30° and dip of approximately 120° , with linear extension. It rises in the west and forms a platform, while it sinks in the east and forms a depression. The F2 normal fault is located between the Tenglong platform in the east and the Luobei depression in the west, with a strike of 30° and dip of approximately 300° . The F5 normal fault is located in the eastern Tenglong platform, with a strike of 30° and dip of approximately 300° ; it declines in the west to become a platform and uplifts in the east to become low mountains and hills. It also forms the line of demarcation between the Tenglong platform and the Beishan terrane. The F3 confined aquifer passes through the south-central Tenglong platform to divide the platform into a southern part and a northern part; it has a strike of 70° and a dip of 135° ; the northern part of the fault sinks and the southern part uplifts. It controls the development

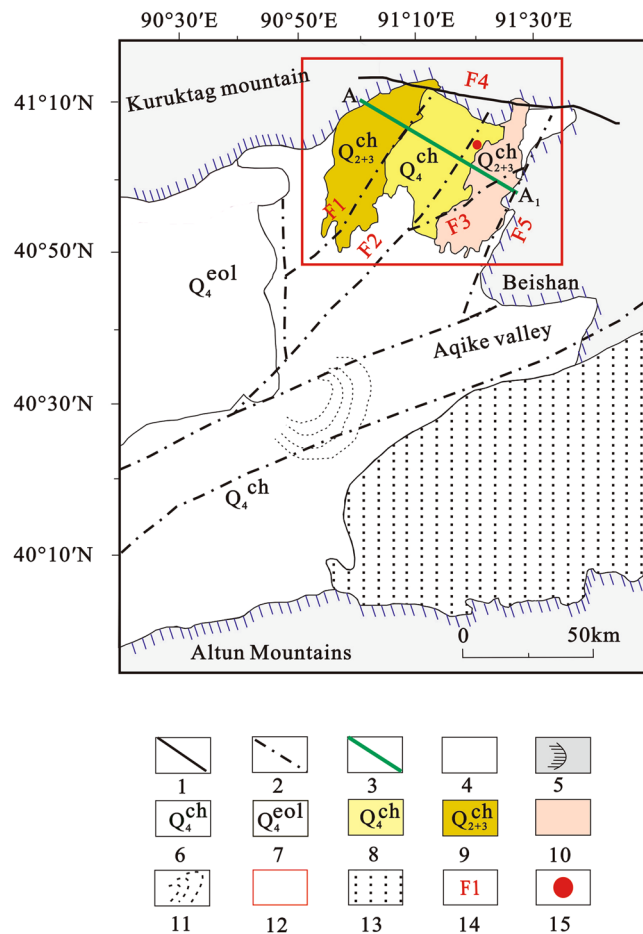


Figure 2. Distribution map of mining areas²³. 1. Fracture; 2. buried fault; 3. section line; 4. Quaternary period; 5. pre-Quaternary; 6. Quaternary chemical deposition; 7. Quaternary aeolian deposits; 8. Luobei depression; 9. Xinqing platform; 10. Tenglong platform; 11. “Great ear” area; 12. research area; 13. desert; 14. main fractures; 15. ZK1200 drill hole.

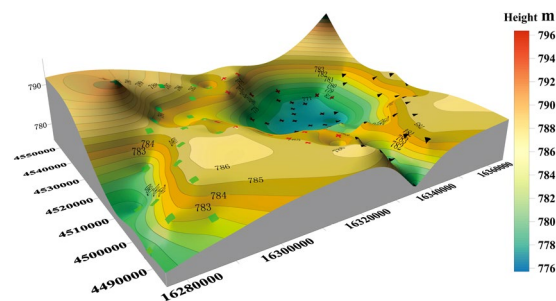


Figure 3. Ore district brine elevation and sampling point distribution map. In Fig. 3, the red crosses represent sampling points in the Luobei depression; the green squares represent sampling points in the Xinqing platform; and the black triangles represent sampling points in the Tenglong platform.

of groundwater in the Tenglong platform. The F4 normal fault is located in the northern part of this area, and controls the northern boundaries of the three mining areas; with a strike of 100° and a dip of 190° ^{19,23}.

Mining area brine elevation. From the GPS elevation data and brine buried depth measured on site, a contour map of mining area elevations was made with Surfer 11 (kriging) (Fig. 3). Underground brine in the Luobei depression is the lowest area, with minimum elevation of 775 m, maximum of 785 m, and average of 780 m; the brine elevation of the Xinqing platform is at the highest 795 m and the lowest 780 m, with an average of 789 m. The highest brine elevation of the Tenglong platform is 790 m and the lowest is 780 m, with an average of 785 m. The three mining areas are low in the middle and high on both sides. Because the Luobei depression is the lowest area,

occasional transient surface runoff from the low surrounding hills or seasonal floods may occur and subsurface flow will converge here.

Characteristics of the potassium-rich brine reservoir. The reservoir of the Lop Nor potassium-rich brine deposit is mainly glauberite with a gravel layer, but the existing and proven brine beds are mostly in glauberite layers. Only a few gravel strata contain potassium-rich brines, and their distribution and reserves are not clearly defined. Therefore, this paper only discusses glauberite reservoirs. Currently, 200 boreholes have been drilled in the Lop Nor mining area, and the Late-Middle Pleistocene to Late Pleistocene strata are distributed as a massive, continuous, thick layer of glauberite with well-developed intercrystal porosity (Fig. 4C), forming a good storage medium for potassium-rich brine. However, due to the influence of buried faults, there are differences in the brine storage layers among the three mining areas. There are seven brine beds (Fig. 4B) exposed by drill holes in the Luobei depression, including a phreatic aquifer, W_{1L} , and six artesian aquifers, W_{2L} , W_{3L} , W_{4L} , W_{5L} , W_{6L} , and W_{7L} ; however, due to the limitations of mining depth, at present, only W_{1L} , W_{2L} , W_{3L} , and W_{4L} seams have been mined. There are two artesian brine aquifers, W_{2X} and W_{3X} , exposed by drill holes in the Xinqing mining area²⁴. There are three beds in the Tenglong mining area, including a phreatic aquifer, W_{1T} , and two artesian aquifers, W_{2T} and W_{3T} (Fig. 4A).

Luobei depression mining area. The Luobei depression is the main storage site of the Lop Nor potassium-rich brine, with a north-south length of about 60 km, east-west width of 32.5 km, and a total area of 1411 km²²⁵. There are stable salt-bearing clay aquiclude layers separating the seven brine layers in the mining area. The potassium-rich brines occur in glauberite rocks; lithologies of each brine storage layer with gypsum and glauberite contents can be seen in Fig. 4(B). W_{1L} is a phreatic aquifer with layered distribution across the whole Luobei depression, with average thickness of 17.54 m, water table depths of 1.7 to 2.3 m, porosities of 6.98% to 38.45%, and specific yields of 4.57% to 25.89%. Water yield is the highest in the central and northeast, with unit brine overflows of more than 5000 cubic meters per day per meter of water table depth (m³/d·m), while in the rest of the aquifer the unit brine overflows range from 1000 to 5000 m³/d·m²⁵. The W_{2L} artesian aquifer is confined, nearly horizontal with a stratified distribution, and has an average thickness of 10.18 m, unit brine overflows of 10 to 100 m³/d·m, water table depths of 20 to 40 m, porosities of 4.34% to 37.8%, and specific yields of 1.08% to 21.04%. The W_{3L} artesian aquifer is confined, with stratified distribution and an average thickness of 8.50 m, unit brine overflows of 10 to 100 m³/d·m, water table depths of 40 to 70 m, porosities of 2.85% to 19.97%, and specific yields of 1.10% to 13.37%. The W_{3L} aquifer is also confined with stratified distribution, with an average thickness of 7.28 m, unit brine overflows of 10 to 100 m³/d·m, water table depths of 70 to 100 m, porosities of 5.22% to 24.72%, and specific yields of 1.03% to 9.91%¹⁶. The lithologies of the four brine storage layers are dominated by glauberite, and occasional lacustrine sedimentary clastic rocks, such as gypsum.

Xinqing platform mining area. The Xinqing platform consists of two confined potassium-bearing brine aquifers (Fig. 4A). Confined brines have layered or stratified distributions. The average thicknesses of the aquifers are 4.38 to 7.52 m. Due to control by the F1 fault, there is no phreatic aquifer in the Xinqing platform, but this does not affect the continuity of the brine storage layer between the mining areas. The W_{2X} aquifer is confined, stratified, and distributed in the eastern part of this ore district with a north-south length of 77.78 km, east-west width of 16.82 km, and total area of 1100 km². Unit brine overflows are 2.25 to 541.51 m³/d·m, water table depths are 10 to 20 m, porosities are 3.89% to 40.69%, and specific yields are 2.01% to 21.15%. The W_{3X} aquifer is also confined and stratified, with a north-south length of 76.10 km, east-west width of 18.81 km, and total area of 1444 km². Unit brine overflows are 1.67 to 293.99 m³/d·m, water table depths are 11.3 to 38 m, porosities are 4.16% to 26.43%, and specific yields are 2.11% to 14.19%²³.

Tenglong platform mining area. The Tenglong platform consists of a phreatic aquifer and two confined aquifers. W_{1T} is a phreatic, stratified aquifer and is the main ore body, bounded by the F3 fault. It is distributed the northern part of the mining area, with a north-south length of about 33 km, east-west width of about 20 km, and total area of 610 km². Water table depths are 3.26 to 4.6 m, porosities are 2.03% to 38.81%, and specific yields are 22.48% to 1.22%. On the other side of the F3 fault, in the southern part of the mining area, is the W_{2T} confined aquifer. Water table depths are 16.91 to 22 m, porosities are 3.58% to 37.64%, and specific yields are 1.35% to 18.69%. W_{3T} is also a confined aquifer, with a stratified orebody distributed in the southern part of the mining area, with a north-south length of about 29 km, east-west width of about 21 km, and total area of 546 km². Water table depths are 17.13 to 47 m, porosities are 2.69% to 38.71%, and specific yields are 1.26% to 17.64%. Water table depths, porosities and specific yields for each brine storage layer are listed in Table 1.

Geochemical characteristics of potassium-rich brines. A total of 91 brine samples were collected from boreholes in the three mining areas, and analyzed for their chemical compositions, as listed in Table 2.

As described in Table 2, the brines of the three mining areas are all high salinity, ranging from 247 to 385 g/L. Luobei depression has the highest salinity, averaging 367 g/L, followed by Xinqing with an average of 332 g/L, and then Tenglong with an average of 325 g/L. Cl^- and Na^+ are the main components followed by Mg^{2+} , K^+ , and SO_4^{2-} , while other elements are found in very small amounts and their abundances in the brine are not more than 1%. According to the classification system of Valyashko²⁶ (1965), the Lop Nor brine deposit hydrochemistry is of the magnesium sulfate subtype.

The main targets for mining are potassium and boron. The K^+ contents in the brines of the three ore districts range from 5.5 to 9.8 g/L, which are all higher than the industrial mining grade of KCl (1%)²⁷. The average content of K^+ is 7.2 g/L in the Xinqing mining area, 8.0 g/L in the Luobei mining area, and 7.7 g/L in the Tenglong mining area. The average coefficient of variation is 12.3%, indicating that the grade of potassium is stable. The content

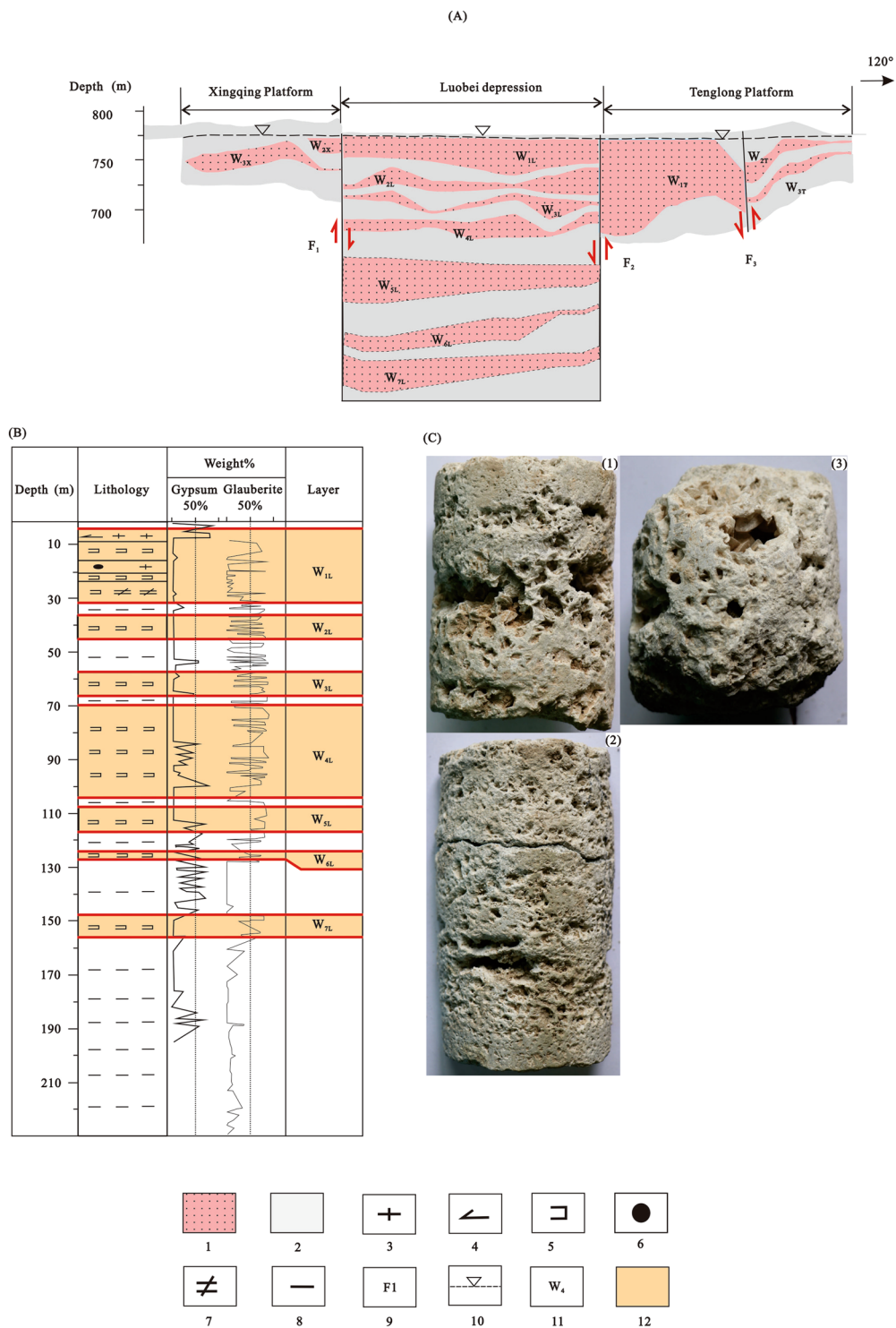


Figure 4. Vertical profile of brine reservoirs in each mining area. 1. glauberite reservoir; 2. clay water-resisting layer; 3. halite; 4. gypsum; 5. glauberite; 6. gravel; 7. bloedite; 8. clay; 9. buried fault; 10. equipotential line; 11. brine storage layer; 12. distribution of brine storage layer in drill hole. W_{1L} to W_{7L} are the storage layers in the Luobei depression; W_{2X} to W_{3X} are the storage layers in the Xinqing platform; and W_{1T} to W_{3T} are the storage layers in the Tenglong platform.²³; (B) lithological column with gypsum and glauberite contents of drill hole ZK1200 in the Luobei depression^{6,28,29}; (C) photographs of glauberite pores, where (1), (2), and (3) represent depths of 10.5 m, 11.8 m, and 34.77 m, respectively.

Mining area	aquifer	Water buried depth (m)	Porosity %	Specific yield %
Luobei depression	W _{1L}	1.7–2.3	6.98–38.45%	4.57–25.89%
	W _{2L}	20–40	4.34–37.8%	1.08–21.04%
	W _{3L}	40–70	2.85–19.97%	1.10–13.37%
	W _{4L}	70–100	5.22–24.72%	1.03–9.91%
Xinqing platform	W _{2X}	10–20	3.89–40.69%	2.01–21.15%
	W _{3X}	11.3–38	4.16–26.43%	2.11–14.19%
Tenglong platform	W _{1T}	3.26–4.6	2.03–38.81%	22.48–1.22%
	W _{2T}	16.91–22	3.58–37.64%	1.35–18.69%
	W _{3T}	17.13–47	2.69–38.71%	1.26–17.64%

Table 1. Water table depths, porosities, and specific yields for each brine storage layer in the Lop Nor potassium-rich brine deposit.

Mining area	Chemical composition	salinity	Ca ²⁺	Mg ²⁺	Na ⁺	Cl ⁻	SO ₄ ⁻	K ⁺	HCO ₃	Br ⁻	B ³⁺	Li ⁺
	unit	g/L	g/L	g/L	g/L	g/L	g/L	g/L	g/L	mg/L	mg/L	mg/L
Xinqing	max	356	0.8	20.1	101.7	186.1	5.9	8.8	0.2	35.2	724.5	18.1
	min	256	0	6.3	48.4	130.5	0.3	6.68	0.1	2.1	293.9	3.4
	average	332	0.2	11.2	80.9	167.9	2.3	7.2	0.2	15.1	478.5	11.2
	Coefficient of variation	31%	83%	31%	15%	8%	75%	13%	31%	48%	24%	29%
Luobei	max	385	0.4	29.29	99.2	194.7	7.35	9.8	0.3	29.3	715	25.3
	min	278	0.0	6.3	41.6	104.9	0.2	5.5	0.1	1.9	293.9	8.4
	average	367	0.2	13.6	81.3	176.3	2.5	8.0	0.2	12.1	504.2	16.8
	Coefficient of variation	26%	77%	36%	16%	8%	77%	12%	0.34%	61%	20%	23%
Tenglong	max	334	0.6	23.4	93.2	191.8	9.5	9.3	0.3	48.8	755.6	17.6
	min	247	0.0	7.8	24.4	102.8	0.2	6.1	0.0	2.5	277.3	8.9
	average	325	0.2	14.8	71.6	164.1	3.0	7.7	0.1	15.5	507.5	14.0
	coefficient of variation	24%	93%	31%	23%	11%	83%	12%	38%	65%	25%	15%

Table 2. Chemical compositions of potassium-rich brine in Lop Nor.

of B³⁺ in the three mining areas ranges from 277.3 to 755.6 mg/L, which are all higher than the comprehensive utilization grade of 150 mg/L, and in most brines the B³⁺ content is higher than the industrial mining grade of 300 mg/L²⁷. Comprehensive development and use of brine can be carried out. The contents of bromine and lithium are generally low in the whole mining area, ranging from 1.9 to 48.8 mg/L for Br⁻ and from 3.4 to 25.3 mg/L for Li⁺, which are far lower than the comprehensive utilization grade of 150 mg/L for bromine and 13.1 mg/L for lithium. These latter two elements are not yet of mining value.

Spatial distribution trends of KCl contents. We plotted isoline maps of KCl contents from measured results, using Surfer software (Fig. 5). The figure shows the spatial distributions of KCl contents for three layers (W₁, W₂, and W₃) in the Lop Nor potassium brine deposit.

According to Fig. 5, the grades of KCl in the three ore beds are above the industrial mining grade (KCl content 1%) and the salinity and content of K⁺ of the brines increased with burial depth. The layers with KCl grades $\geq 1.2\%$ make up more than 50% of the whole mining area, and as depth increases, the area increases. For the upper W₁ layer, KCl contents of more than 1.2% in the brine are mainly found in the south-central part of the mining area, with the highest value 1.56%, and an average value of 1.3% (Fig. 5a). The contents of KCl in the middle, W₂ ore layer, exhibit two high areas and one low area. The areas with more than 1.2% of KCl are mainly found in the north-central and southern regions of the mining area, with KCl contents of 1.2% to 1.45% and 1.2% to 1.55%, respectively. The average value is 1.21%. Between the two high value areas is a low value area, with KCl contents of 1% to 1.2% (Fig. 5b). In the W₃ ore layer, the KCl grade is generally high, with KCl contents of more than 1.2% across most of the mining area, ranging from 1.2% to 1.5%, with an average of 1.31% (Fig. 5c).

The KCl grades in the three ore beds are more than the industrial grade. Since the Lop Nor potassium brine deposit was opened in 2004, it has been continually mined for 13 years. In comparison with the KCl grade identified before mining, the grade of KCl has decreased by 0.2% to 0.3%.

Spatial distribution trends of B₂O₃ contents. The isoline maps (Fig. 6) of B₂O₃ contents in different ore beds indicate contents are higher than that of the industrial mining grade of 1000 mg/L, and that most B₂O₃ contents are more than 2400 mg/L. Content of B₂O₃ in the W₁ reservoir (Fig. 6a) varies from 1900 to 4500 mg/L, with

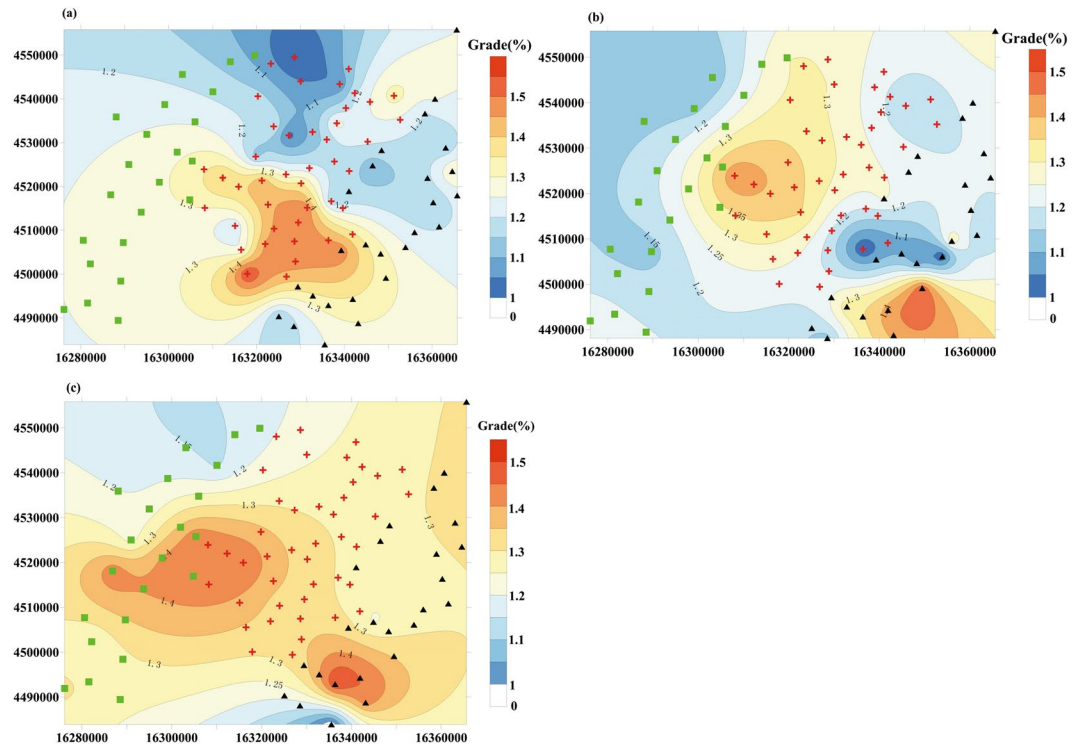


Figure 5. Distribution of KCl contents in different layers of potassium-rich brines at Lop Nor. (a) W₁ reservoir; (b) W₂ reservoir; (c) W₃ reservoir.

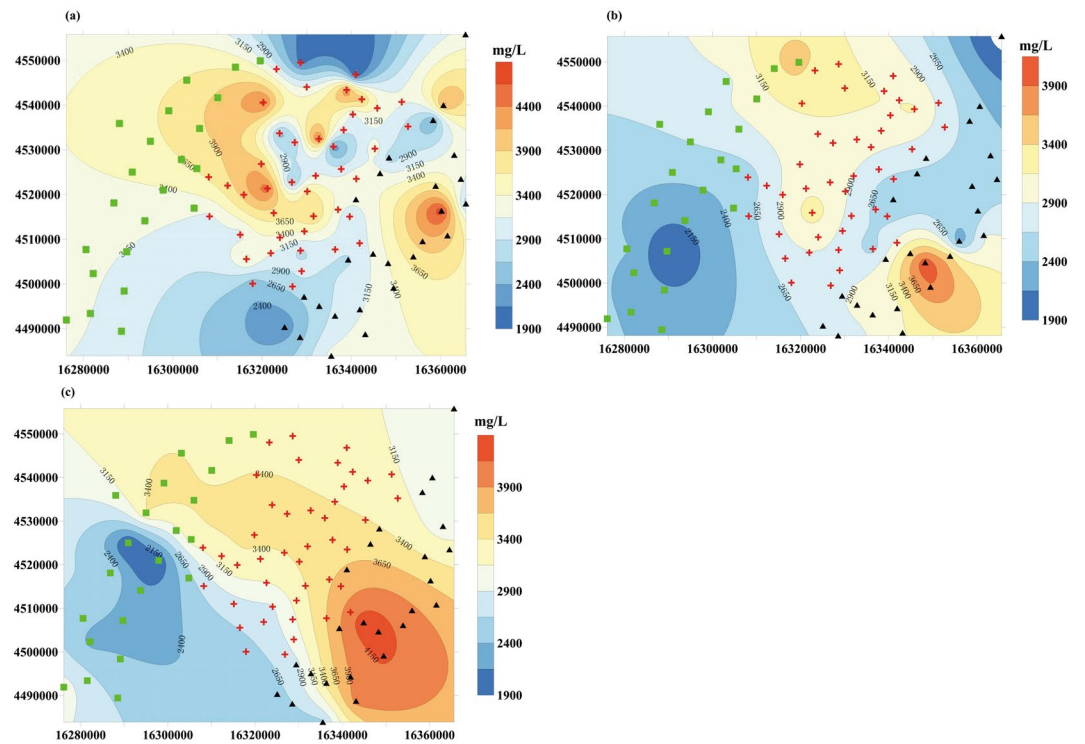


Figure 6. Distribution of B₂O₃ contents in potassium-rich brines at Lop Nor. (a) W₁ reservoir; (b) W₂ reservoir; (c) W₃ reservoir.

an average of 3200 mg/L. The highest value area (more than 3900 mg/L) is concentrated in the middle of the mining area. The content of B_2O_3 in the W_2 reservoir (Fig. 6b) varies from 1900 to 4100 mg/L, with an average of 2900 mg/L. There are lower values in the northeastern and southwestern parts of the mining area and higher values in the northern and southeastern parts. The content of B_2O_3 in the W_3 (Fig. 6c) reservoir ranges from 1900 to 4300 mg/L, with an average of 3000 mg/L. Higher values are distributed from the southeastern part of the mining area toward the northwest. Although the contents of B_2O_3 in the three layers are higher than that of the industrial mining grade, at present, only the potassium in the brine is mined.

Conclusion

The Lop Nor brine deposit is a Quaternary continental saline lake, where a large amount of potassium-rich brine is contained in porous glauberite rock. This is very rare in Quaternary potassium basins, and the genesis of the deposit is still unclear. The deposit formed three mining areas under the control of tectonic action. These are, in order from west to east, the Xingqing platform, Luobei depression, and Tenglong platform. The Luobei depression is the main ore body, with the largest area and number of storage aquifers (seven in the first 200 meters). However, only four layers, W_{1L} to W_{4L} , are currently exploited. Potash reserves have not been ascertained for strata below 200 meters.

Lop Nor potassium-rich brine deposit contains high salinity brines, with salinity ranges of 247 to 385 g/L. KCl grade ranges from 1.2% to 1.45% with an average of 1.27%. B_2O_3 grade varies from 1900 to 4500 mg/L, which is higher than the industrial mining grade. The deposit is now mined by the SDIC Xinjiang Luobupo Hoevellite Co. Ltd and the main product is potassium sulfate, with an annual production capacity of 1.3 million tons. From the plotted KCl and B_2O_3 contour maps, an obvious desalination phenomenon is seen in the northern part of the W_1 ore layer, possibly related to the low-salinity water submersible recharge in front of the Kulutage in the northern part of the basin. Therefore, it will be necessary to further exploit isotope tracer methods to construct models of the brine flow fields and take measures to ensure the quality and continued production of the deposit.

References

1. Wang, X. F. Potassium resources in China and the world, and its development and utilization present situation. *J. Phosphate and compound fertilizer* (01), 10–3 (2005).
2. Wang, C. N., Yu, J. Q., Chen, L. & Zhang, L. S. A Review on the Exploration of Global Potash Resources with an Emphasis on the Past and Present Status of China with a Methodological Perspective. *J. Journal of salt lake research* 15(3), 56–72 (2007).
3. Ye, J. H. Discussion on potash mining. *J. Goods and quality* (42), 126 (2015).
4. Zheng, M. P. et al. New understanding of Mengye potash mineralization in Jiangcheng, Yunnan. *J. Acta Geoscientica Sinica* 35(1), 11–24 (2014).
5. Liu, C. L. & Lv, F. L. National 973 Program “Study on law and prediction of potassium formation in marine facies” project brief. *J. Acta Geologica Sinica* 11 (2015).
6. Wang, M. L. *Potash resources in Saline Lake*, (Lop Nor: Geological Publishing House, 2001).
7. Zhao, H. T. et al. Morphological characteristics and growth factors of glauberite in Lop Nor dry Saline Lake. *J. Acta Mineralogical Sinica* (01), 97–106 (2014).
8. Jiao, P. C., Liu, C. L., Wang, W. & Chen, Y. Z. Geochemical study on the formation of potash deposits in Saline Lake, Lop Nor. *J. Mineral deposits* (S1), 225–228 (2006).
9. Liu, C. L., Wang, M. L. & Jiao, P. C. Isotope geochemistry of hydrogen, oxygen, strontium and sulfur in Saline Lake and source of potash ore forming material in Lop Nor, Xinjiang. *J. Mineral deposits* (03), 77–84 (1999).
10. Ma, L. C., Li, B. G. & Jiang, P. G. Dissolution and migration law of major geochemical elements in the salt crust of Lop Nor dry Saline Lake. *J. Mineral deposits* (S1), 385–386 (2010).
11. Fang, Y. Technical analysis of extracting potassium sulfate from brine of Saline Lake in Lop Nor. *J. Modern Salt and Chemical Industry* 43(2), 33–34 (2016).
12. Hou, J. H. & Gai, X. H. Experimental study on the preparation of Picromerite from Saline lake mineral in Lop Nor. *J. Xinjiang chemical industry* (2), 5–7 (2012).
13. Li, H. & Tan, C. J. Development and application of water mining equipment in potassium mixed salt mine in Lop Nor saline lake. *J. Mining Research and Development* (6), 4–7 (2008).
14. Li, H. et al. Experimental study on preparation of potassium sulfate from bittern of Lop Nor Saline Lake. *J. Journal of salt and chemical industry* 37(2), 9–12 (2008).
15. Qin, Z. M. Study on the technology of producing soft picromerite from Saline Lake brine in Lop Nor. *J. Modern salt and chemical industry* (1), 27–29 (2016).
16. Wang, M. L. et al. Luobei depression superlarge potash deposits characteristics and Exploitation Prospects in Lop Nor. *J. Mineral Deposits* (1998).
17. Zhang, P. M. et al. Research on the application of remote sensing geology potassium mineral in Lop Nor [J]. *Mineral Exploration* (02), 161–4 (2010).
18. Yuan, G. X., Chen, J. J., Zhao, Z. H. & Bai, L. Y. Some new understandings of Quaternary environmental evolution in Lop Nor area. *J. Modern Applied Physics* 4(3) (2013).
19. Hu, D. S. & Zhang, H. J. Formation and environmental evolution of lake evaporation salt resources in desert area of Lop Nor. *J. Glaciers and frozen soil*. (02), 212–218 (2004).
20. Sun, W. D. et al. Application of Surfer 11.0 software in Hydrology. *J. Inner Mongolia Water Resources* (5), 144–145 (2014).
21. Wang, B. Q. et al. Division criteria, basis and principle establishment of tectonic units in Tarim Basin. *J. Geotectonic et metallogenic* 33(1), 86–93 (2009).
22. Lin, C. S. et al. The paleo tectonic framework of the Paleozoic important evolution stages and palaeogeographic evolution in Tarim Basin. *J. Acta petrologica sinica* 27(1), 210–218 (2011).
23. Han, F. F., Shi, D. Y. & Sun, Z. W. Discussion tectonics in northern Xinjiang, Lop Nor its water controlling function. *J. West-China Exploration Engineering* 25(8), 174–176 (2013).
24. Fan, X. *Hydrochemical characteristics and evolution mechanism of underground brine in Xin Qing, Ruoqiang County, Xinjiang*, (China University of Geosciences Wuhan, 2011).
25. Tang, P. H., Chen, T. D. & Gu, X. L. Study on Luobei depression liquid potash deposit occurrence regularity in Lop Nor, Xinjiang. *Symposium on geology and mineral resources of Tianshan* (2008).
26. Valyashko, M. G. *Geochemical regularity of potash deposit formation*, (China Industry Press, 1965).
27. DZ/T 0212–2002 People’s Republic of China geological and mineral industry standard. Ministry of land and resources of People’s Republic of China (2002).

28. Ma, L. C. *et al.* Characteristics of “Great ear” salt pan, cause of formation and paleoenvironmental Significance. *J. Acta Sedimentologica Sinica* (01), 125–133 (2011).
29. Ma, L. C. *et al.* Hydrochemical characteristics and brine evolution paths of Lop Nor Basin, Xinjiang Province, Western China. *J. Applied Geochemistry* 25(11), 1770–1782 (2010).

Acknowledgements

This work was funded by a China Geological Survey project (No. N1611), and Central Public-Interest Scientific Institution Basal Research Fund (No. JYYWF20182403). We would like to thank the editor and two anonymous reviewers for invaluable comments that significantly improved the paper, and Rebecca Stewart, from Liwen Bian, Edanz Editing China (<http://www.liwenbianji.cn/ac>), for English language editing.

Author Contributions

L.C.M. designed the research in the manuscript. M.G.S. and L.C.M. participated in sample collection and processing. M.G.S. wrote the first draft and prepared all figures. All authors reviewed the manuscript.

Additional Information

Competing Interests: The authors declare no competing interests.

Publisher's note: Springer Nature remains neutral with regard to jurisdictional claims in published maps and institutional affiliations.



Open Access This article is licensed under a Creative Commons Attribution 4.0 International License, which permits use, sharing, adaptation, distribution and reproduction in any medium or format, as long as you give appropriate credit to the original author(s) and the source, provide a link to the Creative Commons license, and indicate if changes were made. The images or other third party material in this article are included in the article's Creative Commons license, unless indicated otherwise in a credit line to the material. If material is not included in the article's Creative Commons license and your intended use is not permitted by statutory regulation or exceeds the permitted use, you will need to obtain permission directly from the copyright holder. To view a copy of this license, visit <http://creativecommons.org/licenses/by/4.0/>.

© The Author(s) 2018