

Author Correction: A shared disease-associated oligodendrocyte signature among multiple CNS pathologies

Correction to: *Nature Neuroscience* <https://doi.org/10.1038/s41593-022-01104-7>.
Published online 27 June 2022.

<https://doi.org/10.1038/s41593-023-01266-y>

Published online: 31 January 2023

 Check for updates

Mor Kenigsbuch, Pierre Bost, Shahar Halevi, Yuzhou Chang, Shuo Chen, Qin Ma , Renana Hajbi, Benno Schwikowski , Bernd Bodenmiller, Hongjun Fu , Michal Schwartz  & Ido Amit 

In the version of this article originally published, there was an error in the topmost label (“LPS injection”) in Figure 4f. The citation to Lee et al. 2021 should have been to Hasel et al. 2021 (*Nat. Neurosci.* **24**, 1475–1487 (2021)). The figure has been corrected in the HTML and PDF versions of the article.

© The Author(s), under exclusive licence to Springer Nature America, Inc. 2023






Author Correction: Toxic expanded GGGCC repeat transcription is mediated by the PAF1 complex in *C9orf72*-associated FTD

Correction to: *Nature Neuroscience* <https://doi.org/10.1038/s41593-019-0396-1>.
Published online 30 August 2022.

<https://doi.org/10.1038/s41593-023-01274-y>

Published online: 21 February 2023

 Check for updates

Lindsey D. Goodman, Mercedes Prudencio , Nicholas J. Kramer , Luis F. Martinez-Ramirez , Ananth R. Srinivasan, Matthews Lan, Michael J. Parisi, Yongqing Zhu, Jeannie Chew, Casey N. Cook, Amit Berson, Aaron D. Gitler , Leonard Petrucelli & Nancy M. Bonini 

The authors apologize that the image of a control fly eye used in our original article (Fig. 1d, image (G4C2)8) was used in one of our previous publications (<https://doi.org/10.1186/s40478-018-0555-8>; Fig. 4d (G4C2)8 Control). Below we provide an updated image of Fig. 1 with a different (G4C2)8 control eye image.

© The Author(s), under exclusive licence to Springer Nature America, Inc. 2023

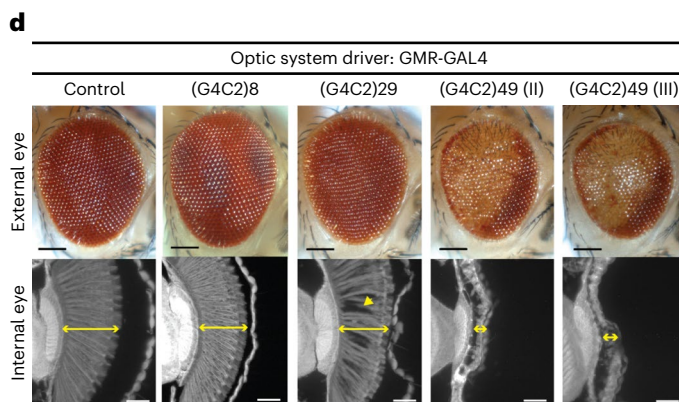


Fig. 1 | Revised Fig. 1d, (G4C2)8 Control.