







Author Correction: Genetically engineered cerebral organoids model brain tumor formation

Shan Bian , Marko Repic, Zhenming Guo , Anoop Kavirayani, Thomas Burkard , Joshua A. Bagley , Christian Krauditsch  and Jürgen A. Knoblich 

Correction to: *Nature Methods* <https://doi.org/10.1038/s41592-018-0070-7>, published online 23 July 2018

In the originally published paper, the “before” image for the afatinib condition in Fig. 6c was incorrect. Instead of an image displaying a GBM-3 neoplastic organoid before afatinib treatment, this panel showed an image from the GBM-2 control (DMSO) group before treatment. This error has now been corrected in the HTML and PDF versions of the article; the “before, afatinib” panel in Fig. 6c now shows a representative image from the indicated experiment. The color of all error bars in Fig. 6 has also been changed to black, for consistency. All statistical analysis and all conclusions presented in the article are unaffected by this error. Nevertheless, we apologize for the mistake.

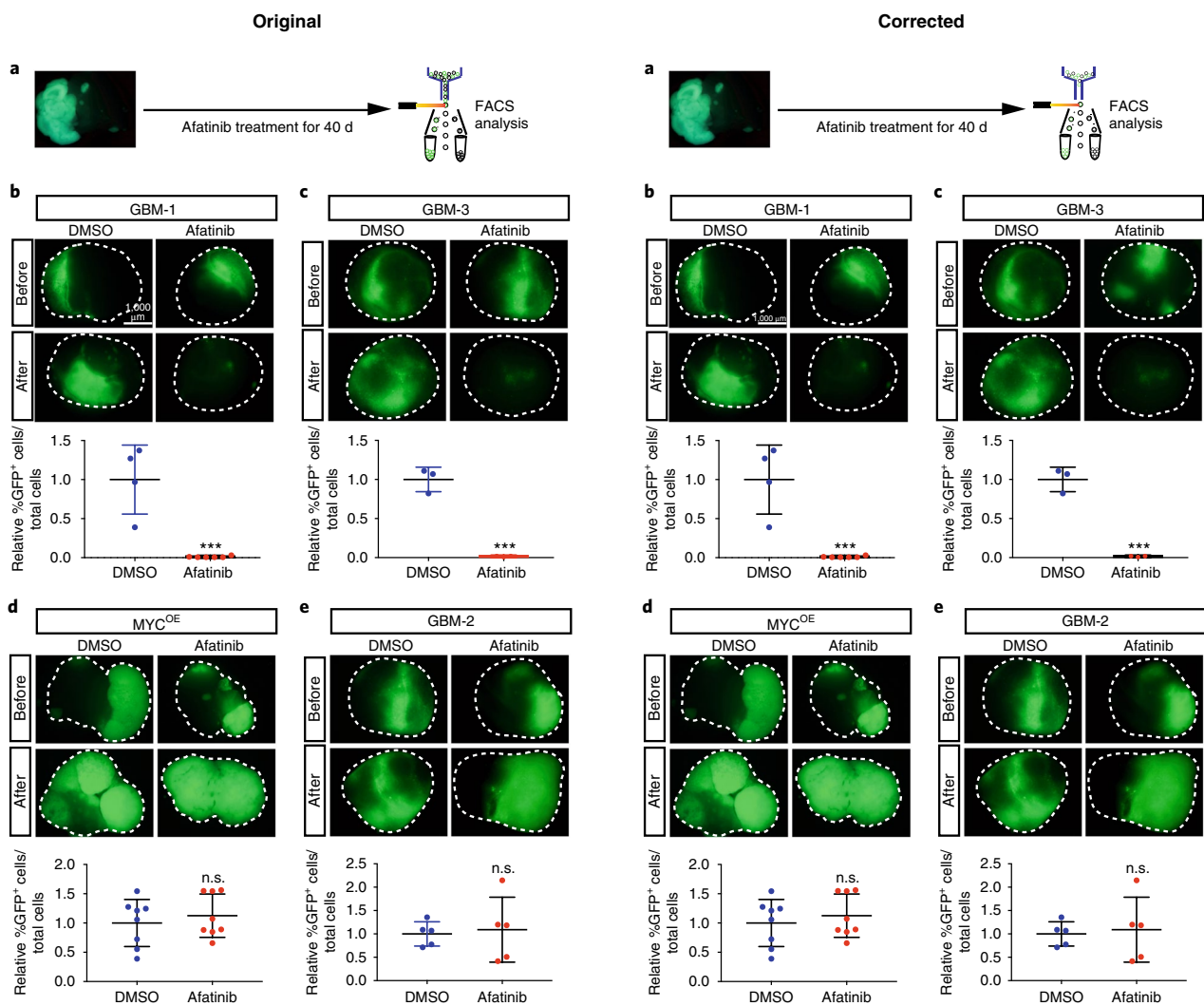


Fig. 6 | Original and corrected versions.

Published online: 22 August 2018
<https://doi.org/10.1038/s41592-018-0118-8>