

A toolkit for capturing a representative and equitable sample in health research

Received: 12 April 2023

Accepted: 24 October 2023

Published online: 8 December 2023

 Check for updates

Ameeta Retzer^{1,2,3,4}✉, Bircan Ciytak^{1,2,4}, Foram Khatsuria^{1,2,4}, Juma El-awaisi^{4,5}, Isobel M. Harris¹, Laura Chapman⁴, Tony Kelly⁴, Jenny Richards⁴, Emily Lam⁴, Philip N. Newsome^{4,6}, Melanie Calvert^{1,2,3,4,7,8,9} & NIHR Birmingham Biomedical Research Centre REP-EQUITY Group*

Research participants often do not represent the general population. Systematic exclusion of particular groups from research limits the generalizability of research findings and perpetuates health inequalities. Groups considered underserved by research include those whose inclusion is lower than expected based on population estimates, those with a high healthcare burden but limited research participation opportunities and those whose healthcare engagement is less than others. The REP-EQUITY toolkit guides representative and equitable inclusion in research. The toolkit was developed through a methodological systematic review and synthesis and finalized in a consensus workshop with 24 participants. The REP-EQUITY toolkit describes seven steps for investigators to consider in facilitating representative and equitable sample selection. This includes clearly defining (1) the relevant underserved groups, (2) the aims relating to equity and representativeness, (3) the sample proportion of individuals with characteristics associated with being underserved by research, (4) the recruitment goals, (5) the strategies by which external factors will be managed, (6) the methods by which representation in the final sample will be evaluated and (7) the legacy of having used the toolkit. Using the REP-EQUITY toolkit could promote trust between communities and research institutions, increase diverse participation in research and improve the generalizability of health research. National Institute for Health and Care Research PROSPERO identifier: CRD42022355391.

Several characteristics could contribute to individuals and groups being underserved by research in context- and study-specific circumstances. These include demographic (for example, age, ethnicity, gender identity), social and economic (for example, employment status,

living location, educational attainment), disease-specific (for example, having rare diseases) and health status-related (for example, having mental health conditions, having multimorbidities, being pregnant) characteristics¹. Failure to include research participants who represent

¹Institute of Applied Health Research, University of Birmingham, Birmingham, UK. ²Centre for Patient Reported Outcomes Research, Institute of Applied Health Research, University of Birmingham, Birmingham, UK. ³National Institute for Health and Care Research (NIHR) Applied Research Collaboration West Midlands, Birmingham, UK. ⁴NIHR Birmingham Biomedical Research Centre (BRC), University of Birmingham, Birmingham, UK. ⁵Institute of Cardiovascular Sciences, University of Birmingham, Birmingham, UK. ⁶Centre for Liver and Gastrointestinal Research, Institute of Immunology and Immunotherapy, University of Birmingham, Birmingham, UK. ⁷Birmingham Health Partners Centre for Regulatory Science and Innovation, University of Birmingham, Birmingham, UK. ⁸Midlands Health Data Research UK, Birmingham, UK. ⁹NIHR Blood and Transplant Research Unit (BTRU) in Precision Transplant and Cellular Therapeutics, University of Birmingham, Birmingham, UK. *A list of authors and their affiliations appears at the end of the paper.

✉e-mail: a.retzer@bham.ac.uk

target populations limits the generalizability of research findings². Different groups might respond differently to an intervention for a range of reasons. Without representative participation, clinical trials cannot capture differences in interventional response¹. This can introduce bias and affect research quality, resulting in a reluctance to offer interventions to specific groups³ and contributing to health inequality and inequity⁴.

Although improving the diversity of clinical trial participants is increasingly prioritized, the coronavirus disease (COVID-19) pandemic accelerated the need to generalize research findings to groups experiencing the greatest health burdens⁵. Minoritized populations, such as Black African and Caribbean and Southeast Asian groups in the UK⁶, as well as Black, Hispanic and Native American communities in the United States⁷, experienced disproportionate risks of severe COVID-19 complications and death yet are generally underrepresented in COVID-19 research⁸. Underrepresentation is endemic in health research (for example, for groups marginalized by ethnic and racial status⁹, gender^{10,11}, age¹² and having comorbidities¹³ or severe mental illness¹⁴), limiting the value of research evidence when applied in broader clinical contexts.

Initiatives to improve research representativeness have emerged through an increased understanding of structural inequities resulting from historical and ongoing discriminatory practices¹⁵ and their continued impact on individual and group outcomes. Equity focus in a healthcare context means deliberately considering the impact of research design and implementation, policies and practice on underserved groups to identify and address complex and multifactorial barriers¹⁶. The US National Institutes of Health Revitalization Act of 1993 acknowledged the underrepresentation of women and minority groups and addressed clinical research equity by requiring justification for their exclusion¹⁷. Subsequently, the US Food and Drug Administration encouraged the inclusion of underserved groups, including older adults¹⁸, women¹⁹ and minority racial and ethnic groups²⁰, through interrogating inclusion criteria, promoting accessibility²¹ and adopting an equity focus in specific clinical areas²². In the UK, efforts have been led by the National Institute for Health and Care Research (NIHR), including through guidance development^{23,24}.

However, with growing emphasis placed on representative inclusion in research by the public and research funders, a practical, evidence-based approach to capture inclusive and representative research samples, minimize bias and promote equity is required³. This would avoid a mechanistic approach that neglects generalizability and further undermines informed consent²⁵ and trust between underserved groups and research institutions²⁶. This study aimed to develop such guidance through a systematic review of existing methodology, synthesis of the REP-EQUITY toolkit, and a consensus workshop to finalize the toolkit and formulate implementation considerations. The terms used are defined in Fig. 1.

Results

Patient and public involvement

Four patients and public members of diverse backgrounds ensured that project aims, conduct and outputs reflected their interests. Based on their advice, the toolkit was developed centered on the research inclusion of underserved groups, focusing on equity rather than equality.

Systematic review

MEDLINE and Embase were searched until September 2022 and October 2022, respectively, yielding 2,209 studies. Reference and citation searching yielded four studies. Gray literature databases were searched until August 2022 (Google Search, Google Images and Google Scholar) and September 2022 (Trip database, National Grey Literature Collection database, BASE database), which yielded one document. A total of 356 duplicates were removed. Fifty-four full-text articles were retrieved for screening. Seven academic papers^{27–33} and one gray literature document³⁴ were included in the review (Supplementary Fig. 1).

The characteristics of the included documents are summarized in Supplementary Table 1. One document was developed in Australia²⁷, one in the Republic of Ireland²⁸, two in the UK^{29,34} and four in the United States^{30–33}. Of those developed in the United States, two were formulated in the context of the US National Institutes of Health guidelines on the inclusion of minority groups in research^{30,31}. Five documents are related to including individuals from minority ethnic and racial groups^{28,29,31,32,34}, and three were developed with a specific interest in transgender and nonbinary individuals³², women³¹, and undocumented migrants, refugees, people seeking protection (asylum seekers) and low-income economic migrants²⁸. One paper is related to older adults³³, one to underrepresented groups³⁰, and one to groups considered marginalized or vulnerable in high-income and lower- and middle-income countries²⁷. Two papers are related to socioeconomic status and rural populations^{30,33}. Two papers are related to cancer clinical trials^{29,30}, one to health and social care research³⁴, one to clinical research³¹, one to human immunodeficiency virus (HIV)³², one to global health research²⁷, one to primary healthcare research²⁸ and one to Alzheimer's disease³³.

Four documents describe frameworks^{27,30,31,34}, and four describe methods used to capture a representative sample inclusive of underserved groups^{28,29,32,33}. Of the four frameworks, three have an equity focus, two of which guide how to establish scope and aims in relation to equity^{30,31} and one guides how to formulate an equitable proposal²⁷. Of the four papers describing methods, one is related to the design and implementation of a participant recruitment registry for clinical studies³³, two describe participant enrichment strategies in trial settings^{28,32} and one describes recruitment into trials²⁹. Four documents used a literature review design, three to formulate a framework^{27,30,34} and one to inform trial design³². All documents refer to using prevalence and population data, with the four frameworks advising on using such data to inform proposal development. Of the articles reporting methods, three used these data to establish criteria in advance and one to verify representativeness²⁹. Two articles describe ascertaining target groups using prevalence data or particular study aims and recruiting patient and public advisors representative of these^{28,32}. The authors of one paper convened a stakeholder panel that included patients and the public³².

Quality appraisal and risk-of-bias assessment were planned but not possible due to the unavailability of relevant appraisal tools.

Consensus workshop

The patient and public panel advised on the workshop format and venue. A preparation session was attended by three public contributors and the public involvement manager. The 2-h hybrid-format workshop took place on November 14, 2022. The 24 participants included 4 public contributors, 1 public involvement manager, 17 researchers from the Birmingham Biomedical Research Centre (BRC) research areas (inflammatory arthritis; sarcopenia and multimorbidity; inflammatory liver disease; cancer inflammation; patient-reported outcomes; data, diagnostics and decision tools; infection and acute care; metabolic health in women; thrombo-inflammation; oral, intestinal and systemic health; and next-generation therapies) and 2 operational team members. Twelve participants convened in person at the University of Birmingham, and 12 joined through videoconferencing software.

REP-EQUITY toolkit

The seven-part draft REP-EQUITY toolkit reflected the research design pathway, identifying (1) relevant groups, (2) aims, (3) sample requirements, (4) recruitment goal considerations, (5) external factor management, (6) evaluation and (7) legacy. Workshop participants unanimously agreed on the toolkit's content and utility in informing the selection of representative research samples.

An algorithmic description of the REP-EQUITY toolkit is shown in Fig. 2. A checklist for its use by research teams during protocol development and final trial reporting is presented in Table 1. Users can use the checklist to record how each consideration has been addressed or

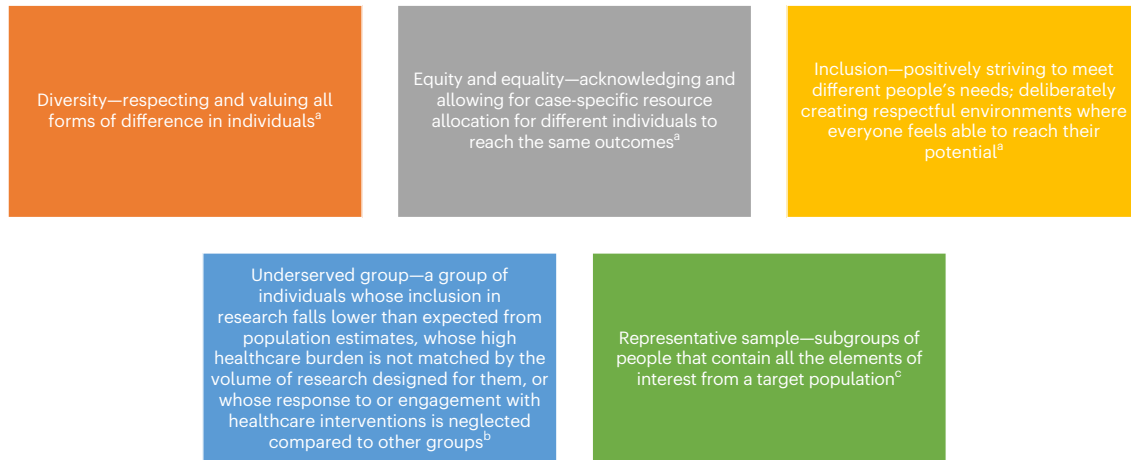


Fig. 1 | Key definitions. Definitions were adapted from ^aCalvert et al.⁶⁸, ^bMorris et al.⁴³ and ^cEnticott et al.⁶⁹.

justify where this was not possible. The REP-EQUITY toolkit consists of seven questions that may be considered sequentially, although elements will interact and influence decisions at earlier and later stages. The questions, options and considerations guide the user through the process of formulating a strategy to capture a representative and equitable sample in a particular research context and consider potential limitations during study design, facilitating transparent reporting. The process was iterated and is exemplified through the development of a retrospective case-study (Table 2).

What are the relevant underserved groups? An understanding of which underserved groups are relevant to a research topic can be established through reviewing available data (for example, prevalence estimates, surveillance data, primary and secondary care data, academic evidence base and gray literature)^{33,34}, seeking additional expertise (for example, by engaging with advocates, scientists, community representatives, policymakers, patients and public members^{28,32}, and through participatory research) and considering available research sites and sites of interest (in terms of prevalence of disease, experience of site personnel³² and promotion of equity depending on the differential health burden²⁷). Use of these data will interact with the clarification of aims, the definition of the proportion of individuals with underserved characteristics (including, but not limited to, social and structural factors (for example, sociopolitical, economic and historical)), the considerations for recruitment goals and the evaluation of the final sample. For equitable research site partnership, the gap in health and well-being between the lead institution and potential sites and the generalizability of research findings should be considered²⁷. This will inform and justify the choice of personal data to be collected from participants to monitor and report sample characteristics.

What is the aim in relation to representativeness and equity? Researchers should decide whether the aim in relation to representativeness and equity is to test hypotheses about possible differences by underserved characteristic(s), generate hypotheses about possible differences by underserved characteristic(s), or ensure a just and equitable distribution of the risks and benefits of participation in research³¹. Depending on the aim, researchers may either ensure adequate statistical power to test hypotheses on differences, conduct exploratory analyses to generate hypotheses, or select study participants such that results can be generalized to relevant populations³¹.

How will the sample proportion of individuals with underserved characteristics be defined? The sample proportions can be defined as decided by the researchers, based on populations with a specific

disease or clinical indication, based on the geographic proportion of underserved groups (nationally, locally or institutionally), or by adjusting for disease prevalence or mortality, where required, using published literature or health data sources³⁰. In doing so, researchers should consider choosing the sample proportion in terms of comparability across studies, generalizability to populations of interest, distribution of the risks and benefits of research participation and how this affects equity, and the feasibility of the approach³⁰.

What are the recruitment goals? Recruitment goals will depend on whether they are defined by statistical power calculations, exploratory analyses or generalizability considerations^{30,31}. Upon confirmation of the recruitment goals, researchers should consider how their fulfillment interacts with the communities’ disposition toward research, the potential for further alienation and the conduct of upholding informed consent³⁰. Cases in which recruitment goals are not formulated through sample size calculations require consideration of how the intended sample proportions will be managed within the available study design. The approach may be determined by the nature of the study (for example, experimental medicine versus later-phase trials). Smaller studies may require a matrix approach that improves representation. This may be developed pragmatically in collaboration with trialists, advocates, researchers, community representatives, policymakers, patients and public members.

How will external factors be managed? External factors are those that might affect the ability to recruit an equitable and representative sample. These factors include, but are not limited to, underreporting or availability of data pertaining to indicators of inequality and disadvantage, research study timeline, independent review boards, participant retention, disease-specific factors (for example, the requirement for representation of different clinical characteristics or etiology)^{29,30} and preexisting institutional collaboration agreements that may limit site selection. Once external factors are identified, corresponding strategies to counter these barriers should be generated.

How will representation be evaluated? The final sample’s representativeness can be evaluated by matching with a priori recruitment goals^{30,31}, verifying against available population-level demographic data adjusted for disease prevalence²⁹ and comparing to available data to establish the impact on equity in terms of the burdens and benefits of research participation^{30,31}. Transparent reporting of these methods allows for assessing across-study comparability, generalizability and equity³⁰.

What will be the legacy? Efforts to capture a representative and equitable sample can have lasting outputs that further promote good

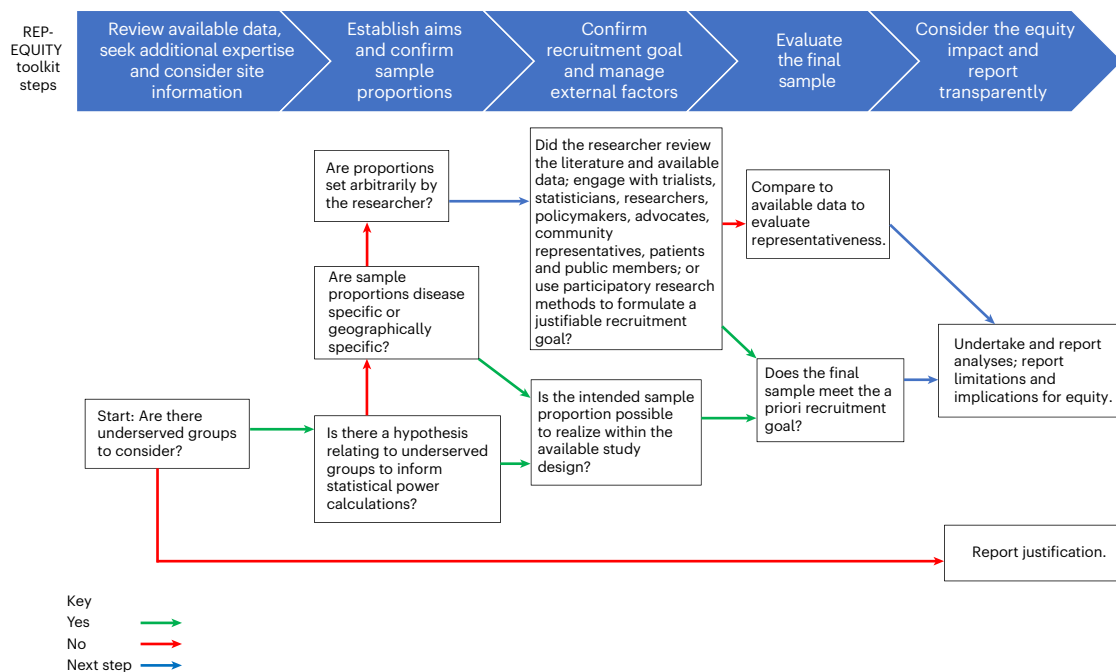


Fig. 2 | Algorithmic description of the REP-EQUITY toolkit. The process to follow based on the toolkit is presented as questions and pathways posed to the researcher. These ascertain researcher intentions and navigate to options to enable representative and equitable sample selection, indicated by differently colored arrows.

Table 1 | REP-EQUITY toolkit checklist

Section	REP-EQUITY question	Explanation	How this has been considered and addressed by the research team
Participant and site sampling	1. What are the relevant underserved groups?	Identify relevant groups and/or characteristics using available data ^{33,34} and additional expertise ^{28,32} , depending on sites of interest or availability of sites ^{27,32} . Use this to inform and justify the choice of personal data to be collected from participants.	
Objectives	2. What is the aim in relation to representativeness and equity?	Define the aim in terms of whether it is to test hypotheses about possible differences by underserved characteristic(s), generate hypotheses about possible differences by underserved characteristic(s), or ensure a just and equitable distribution of the risks and benefits of participation in research ³¹ .	
Participant and site sampling	3. How will the sample proportion of individuals with underserved characteristics be defined?	Justify the chosen proportion in terms of comparability across studies, generalizability to population(s) of interest, distribution and equity impact of the risks and benefits of research participation, and feasibility of approach ³⁰ .	
Participant and site sampling	4. What are the recruitment goals?	Define recruitment goals in terms of requirements for statistical power calculations, exploratory analyses, generalizability ^{30,31} and how they might be practically and ethically realized ³⁰ .	
Participant and site sampling	5. How will external factors be managed?	Formulate strategies to mediate external factors that may influence whether efforts to capture an equitable and representative sample can be realized ³⁰ .	
Analyses	6. How will representation be evaluated?	State the means for evaluation (for example, match with a priori recruitment goal ^{30,31} or available data, compare to available data to establish the impact on equity in terms of burdens and benefits of research participation ^{30,31}).	
Impact and dissemination	7. What will be the legacy?	Plan for lasting outputs (for example, advisory groups ³² , participant registries ³³ , relationships with communities ^{28,32}); transparently report the use of the toolkit and data and/or findings relating to underserved groups.	

practice and inform and direct future efforts. These include the formation of advisory groups³², participant registries³³ and relationships with communities^{28,32} during the research course, as well as the contribution to the evidence base upon completion, which will inform and direct future efforts and further research.

Workshop participants highlighted the barriers and facilitators to using the REP-EQUITY toolkit, relating to the research environment,

data availability, research area and study design, and availability of practical guidance for use, all of which have implications for the eventual utility and implementation of the toolkit (Fig. 3).

Discussion

The REP-EQUITY toolkit provides an evidence-based approach to recruiting a representative and equitable research cohort, including

Table 2 | REP-EQUITY worked case study example

REP-EQUITY question	Retrospective response
1. What are the relevant underserved groups?	A literature review identified a range of potentially underserved groups, including individuals with cirrhosis and associated conditions ^{55–58} , specific racial and/or ethnic groups (Hispanic/Latinx, white ⁵⁹ , Japanese ⁶⁰ , Bangladeshi ⁶¹), groups by gender (men, varying risk in women ⁶²) and sexual minority groups (men who have sex with men and transgender women (relating to hepatitis risk) ^{63,64}). A team in Birmingham, UK, led the trial; trial participants were recruited from the UK population. Trial initiation predated currently available epidemiological datasets such as CPRD ⁶⁵ and novel specialized software such as DExtER (data extraction for epidemiological research) ⁶⁶ , but information identified from the literature review is available and could now be used in combination with these resources.
2. What is the aim in relation to representativeness and equity?	No specific hypotheses relating to underserved groups were made; thus, the aim could have been to attain a just and equitable distribution of the risks and benefits of research or to undertake exploratory analyses.
3. How will the sample proportion of individuals with underserved characteristics be defined?	The trial was funded by the NIHR and a UK charity; thus, proportions may reasonably be derived from UK populations, adjusted for disease prevalence. The most common causes of liver cirrhosis are alcohol consumption, diet and hepatitis; thus, proportions could be established based on the resulting health burden.
4. What are the recruitment goals?	The trial sample size ($n=81$) was derived from power calculations to detect clinically important effects on liver function. The trial eligibility criteria were comprehensive and included alcohol-related liver disease (ARLD), hepatitis C, hepatitis B, primary biliary cholangitis, hemochromatosis, cryptogenic cirrhosis, nonalcoholic fatty liver disease and/or α_1 -antitrypsin deficiency as the liver disease etiology. Stratification was not used. No particular recruitment goals were set except for recruitment to reflect health burden by etiology, which would influence recruitment goals related to underserved groups. Etiology interacts with underserved characteristics in the population (for example, hepatitis and alcohol consumption). If stratification was used, it may be reasonable to formulate recruitment goals relating to alcohol consumption, diet and hepatitis.
5. How will external factors be managed?	Stem cell research is limited by the availability of facilities required for storage; thus, sites were selected on this basis and under preexisting collaborative arrangements. Depending on the intended etiological proportions, the selected sites (Birmingham, Nottingham, Edinburgh (UK)) and their expertise relating to specific groups may be assessed for the extent to which recruitment goals are viable. Exclusion criteria relating to hepatitis C infection and antiviral time present barriers to trial entry for certain groups.
6. How will representation be evaluated?	The final sample included 53 men and 28 women. Age was reported, whereas ethnicity was not reported. The causes of liver disease were ARLD ($n=38$), hepatitis C ($n=10$) and others ($n=33$). The final sample could have been evaluated against available data to evaluate representativeness in the context of trial aims and monitored during the trial to allow adjustments as required. The proportion of those with ARLD may be representative of the disease burden.
7. What will be the legacy?	Rationale and methods to formulate sample proportions were not reported, but the sample characteristics reported allow for appraisal of the applicability of results and meta-analyses. Retrospective use of tools for equality impact assessment will enable consideration of equity implications.

Case study—“Granulocyte colony-stimulating factor and autologous CD133-positive stem-cell therapy in liver cirrhosis (REALISTIC): an open-label, randomised, controlled phase 2 trial” (ref. 67).

those underserved. It was developed through the identification and synthesis of eight methodological documents and finalized during a consensus workshop. The REP-EQUITY toolkit consists of seven distinct steps forming stages of the research design pathway, facilitating consideration of (1) relevant groups, (2) aims, (3) sample requirements, (4) recruitment goals, (5) external factors, (6) evaluation and (7) legacy.

Presented as a checklist, the REP-EQUITY toolkit enables investigators to record how the research team has addressed each consideration or justify where this was not possible. The REP-EQUITY toolkit is intended to guide the user through a reflective process of formulating a strategy and the potential limitations during study design and conduct. This facilitates transparency, promotes trust and directs future efforts for representative and equitable research. This complements the substantial existing literature on engaging, retaining^{35–37} and conceptualizing underserved groups^{38,39} and assessing equity²³. Unless these are operationalized alongside the REP-EQUITY toolkit, equity and representativeness in research cannot be achieved. Resources such as the Clinical Practice Research Datalink (CPRD) Aurum database are increasingly used to facilitate the enrollment of research participants representative of the real-world population through phenotype specification, systematic code searching, iterative and clinical review, and analysis of prevalence and validation⁴⁰. Technological advances of this kind, used in combination with and informed by literature review and engagement with experts (including those with lived experience to identify underserved groups in particular contexts), maximize the potential utility and impact of the REP-EQUITY toolkit. Using a range of complementary resources to determine sample characteristics and proportions permits a comprehensive, transparent and inclusive approach, with each resource offsetting any potential shortcomings of the others.

For example, resources such as CPRD Aurum are not informative of the wide range of characteristics that may result in individuals being underserved. Meanwhile, published literature and topic experts may not be able to provide easily quantifiable information. Although there are practical difficulties when aiming for representative samples (due to the challenge of defining groups and nomenclature, the intersectionality of identity, the context-specific nature of being underserved and the issue of missing data), using the REP-EQUITY toolkit will allow the generation of case studies describing how these can be managed.

This study has some methodological strengths and limitations that should be considered. Pertinent articles may have been missed in the literature search. Although this was mitigated through backward and forward citation searching, extensive searching of gray literature sources and developing strategies from previous systematic reviews, non-English-language literature was excluded. In addition, although several gray literature databases were used, searches through Google would be geotagged and linked with UK sources. Therefore, the documents included in this study may be unrepresentative of the international non-academic literature. The research undertaken in Birmingham BRC is representative of a broad range of research areas affecting a diverse range of individuals and patient groups, and all researchers have experience in research relating to populations residing in Birmingham, UK, a super-diverse city⁴¹. However, as workshop participants were recruited from a high-resource research center, their recruitment only related to their involvement in the NIHR Birmingham BRC research themes rather than their personal and sociocultural characteristics or the experience of low- and middle-income countries and resource-limited settings (these data were also not collected). The degree of bias presented by this is unknown. Therefore, future workshops with international stakeholders

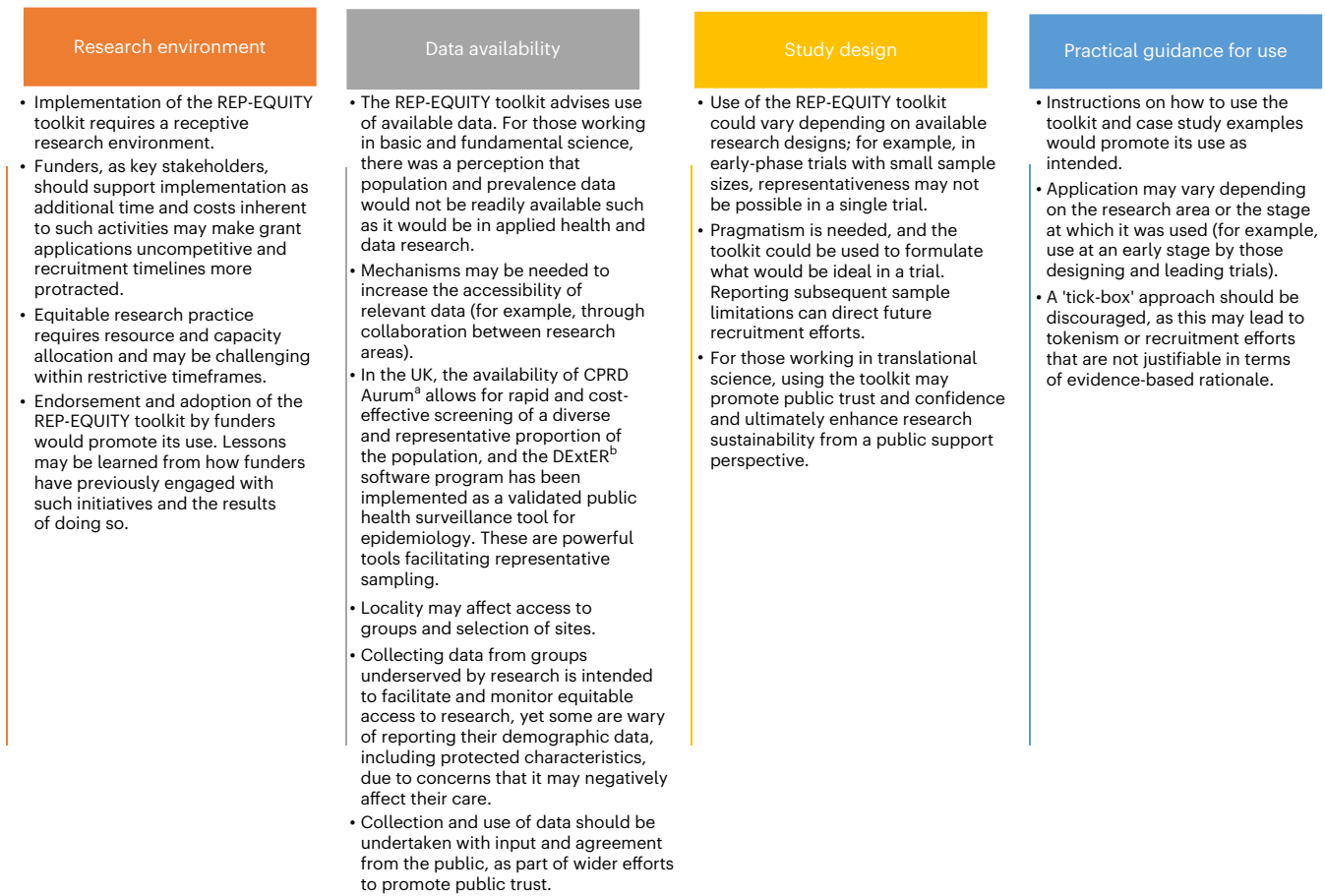


Fig. 3 | Implementation considerations. ^aCPRD Aurum⁷⁰, ^bDExtER⁶⁶.

representing these perspectives and interests are recommended as the next step to enhance the output and expand the REP-EQUITY toolkit to global applicability. Quality appraisal was not possible due to the unavailability of relevant appraisal tools, although the methodological approaches of the documents included in the systematic review were extracted and reported. The limited guidance available for methodological systematic reviews is an ongoing challenge⁴².

Assessing the acceptability and usability of a methodological guidance can allow further iteration to promote its implementation⁴³. Standards for methodological guidance development advise seeking feedback and criticism after publication⁴⁴, an important step to understanding the usability and value of a tool⁴³. Exploring implementation during toolkit development, such as in this research, is novel. Using a consensus workshop to explore the facilitators and barriers to implementing the toolkit permitted reflection on how its use may be promoted. Although these findings were drawn from participants from a biomedical research setting, the use of the toolkit should be considered throughout health research. Workshop participants discussed differences in how the REP-EQUITY toolkit may be used in applied health research and health data science. Documenting the use of the REP-EQUITY toolkit in other fields of health research, such as applied health research and global health, will facilitate the generation of practical case studies and the continued iteration of the toolkit. Future iterations could include sources of contemporary discourse in equity-centered research, such as reflexive exercises on the positionality of the research teams⁴⁵ using the toolkit and exploring the addition of adherence levels to the items. We aim for the toolkit to evolve as related standards become established. Further validation and piloting of the REP-EQUITY toolkit and tracking of its use will further maximize its potential utility. The final step of the toolkit referring to legacy is particularly important.

In studies with small sample sizes, such as in experimental medicine, the extent to which the sample can meaningfully represent a population may be limited. In these cases, the toolkit can support the formulation of aims and the transparent reporting of evaluation, which will be crucial to directing future efforts to enable the generation of representative research outputs. This represents a shift in research practice in which the burden for one study to be representative of all is considerably minimized. Consideration of whether a single study may capture a representative sample that includes underserved groups, paired with ongoing interrogation of who remains underserved by research and who is yet to be considered, will inform continued use of the toolkit.

With a greater understanding of how research practices interact with health outcomes and the perpetuation of health inequality and inequity, the REP-EQUITY toolkit facilitates an evidence-based approach that integrates lived experience to formulate a rationale for the inclusion of underserved groups. Many groups remain skeptical and wary of research, particularly relating to the collection of their personal, socioeconomic and cultural data that regularly form the basis for discriminatory practice⁴⁶ and are associated with poor health outcomes⁴⁷. Using the REP-EQUITY toolkit may build trust with those underserved and wary of participation in research and the use of research outputs, as well as direct efforts to groups for which there will be the greatest benefit in specific health areas from an equity standpoint. Examples of this include the COVID-19 vaccination hesitancy experienced by minority ethnic and racial groups⁴⁸, particularly intersecting with health status (for example, HIV infection⁴⁹ or pregnancy⁵⁰) and in prior cases such as polio vaccination internationally⁵¹, which unevenly distributed the benefits of vaccination research. For some, legacies of historical atrocities, such as the Tuskegee Syphilis Study, and ongoing discrimination

contribute to continued mistrust of health and research institutions, adversely affecting participation⁵².

The workshop identified a range of factors (relating to the research environment, data availability, research area and study design, and practice guidance development) that might serve as barriers and levers to the use of the toolkit. Formal adoption of the REP-EQUITY toolkit by the research community requires support from funders as its use affects resources in terms of finances, time, capacity and effort; as attaining equity requires this support for different individuals to reach the same outcomes⁵³. This might mean making decisions about delivering fewer but higher-quality studies. However, without methodological intervention, such as through the use of this toolkit, research samples will remain biased due to limited generalizability, further contributing to research waste⁵⁴ and continued exacerbation of health disparity and burden. Use can be further promoted through the adoption and championing of the REP-EQUITY toolkit by policymakers, national funding bodies, ethics committees and public contributors to research. Furthermore, integration with other existing mechanisms to uphold methodological rigor could be explored.

Online content

Any methods, additional references, Nature Portfolio reporting summaries, source data, extended data, supplementary information, acknowledgements, peer review information; details of author contributions and competing interests; and statements of data and code availability are available at <https://doi.org/10.1038/s41591-023-02665-1>.

References

- Improving inclusion of under-served groups in clinical research: guidance from the NIHR-INCLUDE project. *National Institute for Health and Care Research* www.nihr.ac.uk/documents/improving-inclusion-of-under-served-groups-in-clinical-research-guidance-from-include-project/25435 (2022).
- Boden-Albala, B. Confronting legacies of underrepresentation in clinical trials: the case for greater diversity in research. *Neuron* **110**, 746–748 (2022).
- Bodicoat, D. H. et al. Promoting inclusion in clinical trials—a rapid review of the literature and recommendations for action. *Trials* **22**, 880 (2021).
- Beresford, P. User involvement, research and health inequalities: developing new directions. *Health Soc. Care Community* **15**, 306–312 (2007).
- Treweek, S., Forouhi, N. G., Narayan, K. M. V. & Khunti, K. COVID-19 and ethnicity: who will research results apply to? *Lancet* **395**, 1955–1957 (2020).
- Khunti, K., Singh, A. K., Pareek, M. & Hanif, W. Is ethnicity linked to incidence or outcomes of covid-19? *BMJ* **369**, m1548 (2020).
- Haynes, N., Cooper, L. A., Albert, M. A. Association of Black Cardiologists. At the heart of the matter: unmasking and addressing the toll of COVID-19 on diverse populations. *Circulation* **142**, 105–107 (2020).
- Etti, M. et al. Ethnic minority and migrant underrepresentation in Covid-19 research: causes and solutions. *eClinicalMedicine* **36**, 100903 (2021).
- Bass, S. B. et al. Exploring the engagement of racial and ethnic minorities in HIV treatment and vaccine clinical trials: a scoping review of literature and implications for future research. *AIDS Patient Care STDS* **34**, 399–416 (2020).
- Gurwitz, J. H., Col, N. F. & Avorn, J. The exclusion of the elderly and women from clinical trials in acute myocardial infarction. *JAMA* **268**, 1417–1422 (1992).
- Reisner, S. L. et al. “Counting” transgender and gender-nonconforming adults in health research: recommendations from the Gender Identity in US Surveillance Group. *Transgend. Stud. Q.* **2**, 34–57 (2015).
- Cruz-Jentoft, A. J., Carpena-Ruiz, M., Montero-Errasquin, B., Sánchez-Castellano, C. & Sánchez-García, E. Exclusion of older adults from ongoing clinical trials about type 2 diabetes mellitus. *J. Am. Geriatr. Soc.* **61**, 734–738 (2013).
- Salmasi, V., Lii, T. R., Humphreys, K., Reddy, V. & Mackey, S. C. A literature review of the impact of exclusion criteria on generalizability of clinical trial findings to patients with chronic pain. *Pain Rep.* **7**, e1050 (2022).
- Wong, J. J., Jones, N., Timko, C. & Humphreys, K. Exclusion criteria and generalizability in bipolar disorder treatment trials. *Contemp. Clin. Trials Commun.* **9**, 130–134 (2018).
- Bowleg, L. We’re not all in this together: on COVID-19, intersectionality, and structural inequality. *Am. J. Public Health* **110**, 917 (2020).
- O’Neill, J. et al. Applying an equity lens to interventions: using PROGRESS ensures consideration of socially stratifying factors to illuminate inequities in health. *J. Clin. Epidemiol.* **67**, 56–64 (2014).
- Mutale, F. Inclusion of racial and ethnic minorities in cancer clinical trials: 30 years after the NIH revitalization act, where are we? *J. Adv. Pract. Oncol.* **13**, 755–757 (2022).
- Lau, S. W. J. *History of FDA Guidance on Drug Evaluation in Older Adult Patients* (US Food and Drug Administration, 2021); www.fda.gov/media/147956/download
- Regulations, guidance, and reports related to women’s health. *US Food and Drug Administration* www.fda.gov/science-research/womens-health-research/regulations-guidance-and-reports-related-womens-health (2019).
- US Food and Drug Administration. *Diversity Plans to Improve Enrollment of Participants from Underrepresented Racial and Ethnic Populations in Clinical Trials Guidance for Industry* (US Government, 2022); www.fda.gov/media/157635/download
- US Food and Drug Administration. *Enhancing the Diversity of Clinical Trial Populations—Eligibility Criteria, Enrollment Practices, and Trial Designs Guidance for Industry* (US Government, 2020); www.fda.gov/media/127712/download
- Project Equity: generating evidence for diverse populations in oncology. *US Food and Drug Administration* www.fda.gov/about-fda/oncology-center-excellence/project-equity (2022).
- Porroche-Escudero, A. & Popay, J. The Health Inequalities Assessment Toolkit: supporting integration of equity into applied health research. *J. Public Health (Oxf.)* **43**, 567–572 (2021).
- Treweek, S. et al. Developing the INCLUDE Ethnicity Framework—a tool to help trialists design trials that better reflect the communities they serve. *Trials* **22**, 337 (2021).
- Miskimen, T., Marin, H. & Escobar, J. Psychopharmacological research ethics: special issues affecting US ethnic minorities. *Psychopharmacology (Berl.)* **171**, 98–104 (2003).
- Roberson, N. L. Clinical trial participation. Viewpoints from racial/ethnic groups. *Cancer* **74**, 2687–2691 (1994).
- Pratt, B. Research for Health Justice: an ethical framework linking global health research to health equity. *BMJ Glob. Health* **6**, e002921 (2021).
- O’Reilly-de Brún, M. et al. Using Participatory Learning & Action research to access and engage with ‘hard to reach’ migrants in primary healthcare research. *BMC Health Serv. Res.* **16**, 25–25 (2016).
- Godden, S., Ambler, G. & Pollock, A. M. Recruitment of minority ethnic groups into clinical cancer research trials to assess adherence to the principles of the Department of Health Research Governance Framework: national sources of data and general issues arising from a study in one hospital trust in England. *J. Med. Ethics* **36**, 358–362 (2010).
- Bolen, S. et al. Defining “success” in recruitment of under-represented populations to cancer clinical trials: moving toward a more consistent approach. *Cancer* **106**, 1197–1204 (2006).

31. Corbie-Smith, G., Miller, W. C. & Ransohoff, D. F. Interpretations of 'appropriate' minority inclusion in clinical research. *Am. J. Med.* **116**, 249–252 (2004).
32. Cespedes, M. et al. Proactive strategies to optimize engagement of Black, Hispanic/Latinx, transgender, and nonbinary individuals in a trial of a novel agent for HIV pre-exposure prophylaxis (PrEP). *PLoS ONE* **17**, e0267780 (2022).
33. Dowling, N. M., Olson, N., Mish, T., Kaprakattu, P. & Gleason, C. A model for the design and implementation of a participant recruitment registry for clinical studies of older adults. *Clin. Trials* **9**, 204–214 (2012).
34. Farooqi, A. et al. *Increasing Participation of Black Asian and Minority Ethnic Groups in Health and Social Care Research* (National Institute for Health and Care Research, 2018); arc-em.nihr.ac.uk/clahrcs-store/increasing-participation-black-asian-and-minority-ethnic-bame-groups-health-and-social
35. Bonevski, B. et al. Reaching the hard-to-reach: a systematic review of strategies for improving health and medical research with socially disadvantaged groups. *BMC Med. Res. Methodol.* **14**, 42 (2014).
36. Versavel, S. et al. Diversity, equity, and inclusion in clinical trials: a practical guide from the perspective of a trial sponsor. *Contemp. Clin. Trials* **126**, 107092 (2023).
37. George, S., Duran, N. & Norris, K. A systematic review of barriers and facilitators to minority research participation among African Americans, Latinos, Asian Americans, and Pacific Islanders. *Am. J. Public Health* **104**, e16–e31 (2014).
38. Heidari, S., Babor, T. F., De Castro, P., Tort, S. & Curno, M. Sex and Gender Equity in Research: rationale for the SAGER guidelines and recommended use. *Res. Integr. Peer Rev.* **1**, 2 (2016).
39. Witham, M. D. et al. Developing a roadmap to improve trial delivery for under-served groups: results from a UK multi-stakeholder process. *Trials* **21**, 694 (2020).
40. Wang, X. et al. Systematic approach to outcome assessment from coded electronic healthcare records in the DaRe2THINK NHS-embedded randomized trial. *Eur. Heart J. Digit. Health* **3**, 426–436 (2022).
41. Vertovec, S. Super-diversity and its implications. *Ethn. Racial Stud.* **30**, 1024–1054 (2007).
42. Munn, Z., Stern, C., Aromataris, E., Lockwood, C. & Jordan, Z. What kind of systematic review should I conduct? A proposed typology and guidance for systematic reviewers in the medical and health sciences. *BMC Med. Res. Methodol.* **18**, 5 (2018).
43. Morris, L. et al. Evaluating a tool to improve engagement and recruitment of under-served groups in trials. *Trials* **23**, 1 (2022).
44. Moher, D., Schulz, K. F., Simera, I. & Altman, D. G. Guidance for developers of health research reporting guidelines. *PLoS Med.* **7**, e1000217 (2010).
45. Dodgson, J. E. Reflexivity in qualitative research. *J. Hum. Lact.* **35**, 220–222 (2019).
46. Equality Act 2010. *HM Government* www.legislation.gov.uk/ukpga/2010/15/contents (2022).
47. *A Participatory Research Project: Exploring the Views and Experiences of Black and South Asian Communities in the UK on Patient Data and Its Uses—Summary Report* (Clearview Research, 2022); understandingpatientdata.org.uk/sites/default/files/2022-04/Diverse%20voices%20on%20Data%20-%20Summary%20report_0.pdf
48. Robertson, E. et al. Predictors of COVID-19 vaccine hesitancy in the UK household longitudinal study. *Brain Behav. Immun.* **94**, 41–50 (2021).
49. Bogart, L. M. et al. COVID-19 related medical mistrust, health impacts, and potential vaccine hesitancy among Black Americans living with HIV. *J. Acquir. Immune Defic. Syndr.* **86**, 200–207 (2021).
50. Blakeway, H. et al. COVID-19 vaccination during pregnancy: coverage and safety. *Am. J. Obstet. Gynecol.* **226**, 236.e1–236.e14 (2022).
51. Khan, Y. H. et al. Threat of COVID-19 vaccine hesitancy in Pakistan: the need for measures to neutralize misleading narratives. *Am. J. Trop. Med. Hyg.* **103**, 603–604 (2020).
52. Garza, M. A. et al. The influence of race and ethnicity on becoming a human subject: factors associated with participation in research. *Contemp. Clin. Trials Commun.* **7**, 57–63 (2017).
53. Braveman, P. & Gruskin, S. Defining equity in health. *J. Epidemiol. Community Health* **57**, 254–258 (2003).
54. Yordanov, Y. et al. Avoidable waste of research related to inadequate methods in clinical trials. *BMJ* **350**, h809 (2015).
55. Carol, M. et al. Stigmatization is common in patients with non-alcoholic fatty liver disease and correlates with quality of life. *PLoS ONE* **17**, e0265153 (2022).
56. Smith-Palmer, J. et al. Impact of stigma on people living with chronic hepatitis B. *Patient Relat. Outcome Meas.* **11**, 95–107 (2020).
57. Saine, M. E. et al. Determinants of stigma among patients with hepatitis C virus infection. *J. Viral Hepat.* **27**, 1179–1189 (2020).
58. Schomerus, G. et al. The stigma of alcohol-related liver disease and its impact on healthcare. *J. Hepatol.* **77**, 516–524 (2022).
59. Sajja, K. C., Mohan, D. P. & Rockey, D. C. Age and ethnicity in cirrhosis. *J. Investig. Med.* **62**, 920–926 (2014).
60. Setiawan, V. W. et al. Prevalence of chronic liver disease and cirrhosis by underlying cause in understudied ethnic groups: the multiethnic cohort. *Hepatology* **64**, 1969–1977 (2016).
61. Alazawi, W. et al. Ethnicity and the diagnosis gap in liver disease: a population-based study. *Br. J. Gen. Pract.* **64**, e694–e702 (2014).
62. Balakrishnan, M. et al. Women have a lower risk of nonalcoholic fatty liver disease but a higher risk of progression vs men: a systematic review and meta-analysis. *Clin. Gastroenterol. Hepatol.* **19**, 61–71 (2021).
63. Hernandez, C. J. et al. High hepatitis C virus seropositivity, viremia, and associated risk factors among trans women living in San Francisco, California. *PLoS ONE* **16**, e0249219 (2021).
64. Steining, K. et al. HIV-positive men who have sex with men are at high risk of development of significant liver fibrosis after an episode of acute hepatitis C. *J. Viral Hepat.* **24**, 832–839 (2017).
65. Herrett, E. et al. Data resource profile: Clinical Practice Research Datalink (CPRD). *Int. J. Epidemiol.* **44**, 827–836 (2015).
66. Gokhale, K. M. et al. Data extraction for epidemiological research (DExtER): a novel tool for automated clinical epidemiology studies. *Eur. J. Epidemiol.* **36**, 165–178 (2021).
67. Newsome, P. N. et al. Granulocyte colony-stimulating factor and autologous CD133-positive stem-cell therapy in liver cirrhosis (REALISTIC): an open-label, randomised, controlled phase 2 trial. *Lancet Gastroenterol. Hepatol.* **3**, 25–36 (2018).
68. Calvert, M. J. et al. Patient reported outcome assessment must be inclusive and equitable. *Nat. Med.* **28**, 1120–1124 (2022).
69. Enticott, J. C. et al. A systematic review of studies with a representative sample of refugees and asylum seekers living in the community for participation in mental health research. *BMC Med. Res. Methodol.* **17**, 37 (2017).
70. Wolf, A. et al. Data resource profile: Clinical Practice Research Datalink (CPRD) Aurum. *Int. J. Epidemiol.* **48**, 1740–1740g (2019).

Publisher's note Springer Nature remains neutral with regard to jurisdictional claims in published maps and institutional affiliations.

Open Access This article is licensed under a Creative Commons Attribution 4.0 International License, which permits use, sharing, adaptation, distribution and reproduction in any medium or format, as long as you give appropriate credit to the original author(s) and the source, provide a link to the Creative Commons license, and indicate

if changes were made. The images or other third party material in this article are included in the article's Creative Commons license, unless indicated otherwise in a credit line to the material. If material is not included in the article's Creative Commons license and your intended use is not permitted by statutory regulation or exceeds the permitted

use, you will need to obtain permission directly from the copyright holder. To view a copy of this license, visit <http://creativecommons.org/licenses/by/4.0/>.

© The Author(s) 2023

NIHR Birmingham Biomedical Research Centre REP-EQUITY Group

Ameeta Retzer^{1,2,3,4}, Bircan Ciytak^{1,2,4}, Foram Khatsuria^{1,2,4}, Juma El-awaisi⁵, Isobel M. Harris¹, Laura Chapman⁴, Tony Kelly⁴, Jenny Richards⁴, Emily Lam⁴, Philip N. Newsome^{4,6}, Melanie Calvert^{1,2,3,4,7,8,9}, Andrew Filer^{4,10}, Shishir Shetty^{4,6}, Jo Parish^{4,11}, Steve Watson^{4,5,12}, Elizabeth Sapey^{4,13}, Caroline Gillet^{4,14}, Jo Palmer^{4,15}, Zehra Yonel^{4,16}, Zohur Miah⁴, Joseph Alderman^{4,13,15}, Elinor Laws^{4,15} & Xiaoxuan Liu^{4,13,15}

¹⁰Rheumatology Research Group, Institute of Inflammation and Ageing, University of Birmingham, Birmingham, UK. ¹¹Institute of Cancer and Genomic Sciences, University of Birmingham, Birmingham, UK. ¹²British Heart Foundation, Birmingham, UK. ¹³Institute of Inflammation and Ageing, University of Birmingham, Birmingham, UK. ¹⁴Institute of Metabolism and Systems Research, University of Birmingham, Birmingham, UK. ¹⁵University Hospitals Birmingham National Health Service (NHS) Foundation Trust, Birmingham, UK. ¹⁶Institute of Clinical Sciences, School of Dentistry, University of Birmingham, Birmingham, UK.

Methods

The REP-EQUITY toolkit was formulated and finalized in two stages: a comprehensive literature search informed by systematic review methodology⁶³ and a consensus workshop involving researchers and theme leads from the NIHR Birmingham BRC and members of the patient and public involvement and engagement (PPIE) panel. Methods are reported in accordance with accepted guidelines^{70–72}.

Ethical approval

This study has undergone ethical review by the Research Ethics Committee at the University of Birmingham and was granted full approval in October 2022 (ERN_22-1182).

PPIE

The NIHR Birmingham BRC convened an equity, diversity and inclusion PPIE panel for the purposes of this study. Panel members had personal and professional links with communities that are underserved by research. Although personal data were collected from panel members, including age, self-reported gender and ethnicity, educational attainment, and previous research involvement and participation, their selection for the panel was not based on these characteristics. During the study, the panel met with the research team monthly in dedicated meetings. They advised on conducting and delivering the research, refining the project scope and aims, selecting the gray literature search terms, including public participants in the consensus workshop and formulating key messages for dissemination. Panel members were invited to join the consensus workshop as participants.

Systematic review search strategies

Our aim was to identify methodological frameworks and approaches used to guide the capture of a representative participant sample in health research, inclusive of groups underserved by research.

Embase and MEDLINE were searched, without date limitation, to identify academic literature. The search strategy included MeSH (Medical Subject Headings) terms, broad search terms, and phrases and keywords related to equity, diversity and inclusion in health research, accounting for variation in terminology used in this area (Supplementary Tables 2 and 3). These were refined through scoping searches, informed by strategies used in comparable systematic reviews^{73,74}. Forward and backward citation searching was used. Google (Google Search, Google Images and Google Scholar), Trip database⁷⁵, National Grey Literature Collection database⁷⁶ and BASE database⁷⁷ were used to search gray literature. Search terms and keywords were derived from the academic literature review search strategy and refined iteratively in consultation with search specialists and the PPIE panel. Search terms were piloted in each database in a process in which the retrieved records were checked for sensitivity, terms were reworded and reentered, and items related to our aim were retrieved (Supplementary Table 4). Upon advice from the PPIE panel, new terms were introduced based on those commonly used in the UK relating to ethnicity, reflecting categories used in census data.

Document selection and eligibility criteria

Academic literature records were downloaded into Endnote (version X9), and duplicates were removed. Titles, abstracts and full texts were screened by two independent investigators (B.C., F.K.). The first 100 results from searches of gray literature databases were screened independently by a researcher, and a 10% sample of these was screened by a second researcher using a minimum agreement threshold of 90%. Disagreements on the eligibility of academic and gray literature documents were resolved through discussion, including a third reviewer (A.R.) when required.

Papers were eligible if they were published in the English language, included guidelines and/or toolkits, or reported methods for capturing a representative sample including underserved groups. Primary

research and systematic reviews were included. Guidelines and/or toolkits were included if they were applicable to the health research discipline without modification. Studies were excluded if they presented existing (unchanged) guidelines and/or toolkits previously identified elsewhere, did not explicitly describe a comprehensive framework and/or toolkit but rather reported on a single study area (for example, qualitative research with a specific underserved group), were published as abstracts only, identified underrepresented groups in research and/or emphasized the need for further research relating to underrepresented groups, or described frameworks and guidelines intended to support the engagement and retention of underrepresented groups in research but not the process of ascertaining who should be included in the sample.

Data extraction, synthesis and draft toolkit development

Data were extracted from documents meeting the eligibility criteria using a bespoke predesigned form in Microsoft Excel. Quality appraisal and risk-of-bias assessment were planned but not possible due to the unavailability of relevant appraisal tools. Two researchers (A.R., F.K.) independently extracted data on document authorship, origin, date and characteristics of the methods described in the document, including target population and components of the methods used. A framework⁷⁸ was developed according to the stages of research proposal development (namely, conceptualizing aims, methods, analysis and reporting), forming the basis of the draft REP-EQUITY toolkit. The extracted systematic review data were categorized into the stages of the framework, formulated into a series of methodological steps and descriptively presented (Supplementary Fig. 2). The draft toolkit was shared during the consensus workshop, and its contents and presentation were iteratively amended based on participant feedback.

Consensus workshop sample selection and recruitment

Purposive sampling was used to recruit participants. The NIHR Birmingham BRC convened an equity, diversity and inclusion PPIE panel and senior academics in leadership roles across the breadth of research undertaken in Birmingham BRC (namely, early-phase, translational research in inflammatory arthritis; sarcopenia and multimorbidity; inflammatory liver disease; cancer inflammation; patient-reported outcomes; data, diagnostics and decision tools; infection and acute care; metabolic health in women; thrombo-inflammation; oral, intestinal and systemic health; and next-generation therapies). Approaches were made by email by the BRC operations team and the public involvement advisor overseeing public contribution. Recruitment continued on a rolling basis until each research theme was represented. Participants were not recruited on the basis of their personal characteristics, such as gender identity or ethnicity, and these data were not collected for workshop participants. The sample was determined through estimations of feasibility based on the experience of carrying out similar hybrid workshops to maximize interaction and data generation^{79,80}.

Individuals indicating interest in participating in the workshop were provided with a participant information sheet and consent form. Accessibility was promoted by offering participants a range of consenting options (electronic Word document, online Microsoft form, verbal consent by telephone) and the opportunity to discuss the research before providing consent. Consent was obtained before the workshop. Public contributor participants were offered honoraria for their time, and expenses incurred during the workshop and the preparation session were recompensated.

Data collection during the consensus workshop

Workshop discussions were led by a female researcher with postdoctoral experience in qualitative methodology (A.R.), and a female qualitative doctoral researcher served as a scribe (B.C.); both of them were assisted by a female research associate (F.K.). One participant was well known to the lead researcher, whereas others had limited or no prior

relationship to the research team except by what was disclosed in the recruitment material and available in the public domain. Only the research team and participants were present during the workshop. The research team members were not blinded to the study aims and hypotheses. Attendance of the workshop was offered in person at the University of Birmingham and remotely through Zoom videoconferencing software (version 5.16). The workshop consisted of a series of presentations and facilitated discussions to draw upon the group's expertise. Discussions were conducted using a semistructured topic guide consisting of open-ended questions to allow exploration of novel topics (Supplementary Appendix 1). Data collection was not informed by data saturation⁸¹ due to the one-off, time-limited nature of the workshop. Thresholds for consensus were planned whereby decisions proceeded if ratified by $\geq 70\%$ of the group. In the case of $< 100\%$ consensus, decisions were discussed until those in disagreement were satisfied that their views had been considered.

Discussion topics included the utility of the proposed toolkit, its applicability to the participants' work, any gaps or required changes, and perceived potential barriers and facilitators to its use. Participants were divided into three groups (two in-person groups and one remote group), and discussions were facilitated by a team member, after which discussions were shared with the main group. Participants were divided for the focus group discussions pragmatically whereby remote participants were placed together in a discussion group. In-person participants were each placed alternately in groups 1 and 2 in the order in which they were seated. The workshop was recorded using encrypted equipment, and detailed notes, including direct quotes, were taken describing discussions and observations of how the participants interpreted the REP-EQUITY toolkit. Discussions were summarized, and the recordings were used for verification. After the meeting, the presentations and draft REP-EQUITY toolkit were reshared with those who wished to contribute further. Public contributor participants shared feedback on their participation experience following the workshop.

Qualitative analysis and synthesis

Based on the participants' comments and the research team's observations of how the participants interpreted the toolkit contents, the research team iteratively amended and further refined the presentation and wording of the toolkit by developing a retrospective case study.

A deductive rapid analysis approach was used⁸² whereby, immediately after the workshop, the scribe reviewed the notes, indicating when additional information or a timestamp was needed. The lead researcher then reviewed and edited the notes while listening to the audio recordings, building upon the scribe's notes. After reading the notes, the research team developed an initial coding framework based on the workshop aims to explore the utility of the proposed REP-EQUITY toolkit and the barriers and facilitators to its use. Additional codes were developed and included as the analysis progressed, and the framework was modified accordingly to ensure that new themes were captured⁸³. The coding frame and sample codes were generated independently by the lead researcher and discussed within the research team. Disagreements were discussed until resolved. Proposals for implementation and eventual use were formulated.

Statistical analysis

Statistical analyses were not performed in this study.

Reporting summary

Further information on research design is available in the Nature Portfolio Reporting Summary linked to this article.

Data availability

Embase, MEDLINE, Google (Google Search, Google Images and Google Scholar), Trip, National Grey Literature Collection and BASE databases were searched. Study data will be retained and securely

stored by the University of Birmingham for 10 years from collection, after which time they will be securely destroyed. The unedited workshop recordings contain identifiable data and cannot be shared. The anonymized detailed workshop summaries are available in Supplementary Appendix 2.

References

- Page, M. J. et al. The PRISMA 2020 statement: an updated guideline for reporting systematic reviews. *BMJ* **372**, n71 (2021).
- Tong, A., Sainsbury, P. & Craig, J. Consolidated criteria for reporting qualitative research (COREQ): a 32-item checklist for interviews and focus groups. *Int. J. Qual. Health Care* **19**, 349–357 (2007).
- Cruz Rivera, S., Kyte, D. G., Aiyegbusi, O. L., Keeley, T. J. & Calvert, M. J. Assessing the impact of healthcare research: a systematic review of methodological frameworks. *PLoS Med.* **14**, e1002370 (2017).
- Chambers, D. et al. *Review of Diversity and Inclusion Literature and an Evaluation of Methodologies and Metrics Relating to Health Research—Working Paper* (University of Sheffield, 2017); eprints.whiterose.ac.uk/121213/1/review-of-diversity-and-inclusion-literature.pdf
- Trip Medical Database* (Trip Database Ltd., accessed 22 November 2023); www.tripdatabase.com/
- National Grey Literature Collection* (Health Education England, accessed 22 November 2023); allcatsrgrey.org.uk/wp/
- Bielefeld Academic Search Engine (BASE)* (Bielefeld University Library, accessed 22 November 2023); www.base-search.net/
- Gale, N. K., Heath, G., Cameron, E., Rashid, S. & Redwood, S. Using the framework method for the analysis of qualitative data in multi-disciplinary health research. *BMC Med. Res. Methodol.* **13**, 117 (2013).
- Retzer, A. et al. Development of a core outcome set for use in community-based bipolar trials—a qualitative study and modified Delphi. *PLoS ONE* **15**, e0240518 (2020).
- Retzer, A. et al. Development of a core outcome set for use in adult primary glioma phase III interventional trials: a mixed methods study. *Neurooncol. Adv.* **5**, vdad096 (2023).
- Saunders, B. et al. Saturation in qualitative research: exploring its conceptualization and operationalization. *Qual. Quant.* **52**, 1893–1907 (2018).
- Nevedal, A. L. et al. Rapid versus traditional qualitative analysis using the Consolidated Framework for Implementation Research (CFIR). *Implement. Sci.* **16**, 67 (2021).
- Fereday, J. & Muir-Cochrane, E. Demonstrating rigor using thematic analysis: a hybrid approach of inductive and deductive coding and theme development. *Int. J. Qual. Methods* **5**, 80–92 (2006).

Acknowledgements

This study was funded by the NIHR Birmingham BRC (ref. NIHR203326, P.N.N.). We would like to acknowledge the contribution of J. Rose and the NIHR BRC's equity, diversity and inclusion PPIE panel for their advice and support. We are also grateful to colleagues who attended our workshop and those who provided additional comments following the consensus workshop. The study funders and sponsors had no role in the design and conduct of the study; collection, management, analysis and interpretation of the data; preparation, review or approval of the manuscript; or decision to submit the manuscript for publication.

Author contributions

A.R. developed the concept of the study. All authors contributed to the study design and the acquisition, analysis and interpretation of data. A.R. prepared the first draft of the paper. All authors provided edits and feedback and approved the final version.

Competing interests

A.R.—funder: NIHR Birmingham BRC, NIHR Applied Research Collaboration West Midlands (ARC WM); funding: Birmingham City Council, UK Research and Innovation (UKRI). B.C.—funder: NIHR Birmingham BRC. F.K.—funder: NIHR Birmingham BRC. J.E.—funder: NIHR Birmingham BRC. I.M.H.—funder: NIHR. L.C.—funder: NIHR Birmingham BRC. T.K.—funder: NIHR Birmingham BRC. J.R.—funder: NIHR Birmingham BRC. E.L.—funder: NIHR Birmingham BRC. P.N.N.—funder: research support from NIHR Birmingham BRC (specific role: none); employment: University of Birmingham (professor of experimental hepatology, director of research and knowledge transfer in the College of Medical & Dental Sciences, director of the NIHR Birmingham BRC, honorary consultant hepatologist at University Hospitals Birmingham NHS Foundation Trust); personal financial interests: grants/contracts, Novo Nordisk; honoraria/travel reimbursement for attending conferences, educational writing: Novo Nordisk, AiCME; consultation fees/advisory boards: Novo Nordisk, Boehringer Ingelheim, Gilead, Intercept, Poxel Pharmaceuticals, BMS, Pfizer, Sun Pharma, Madrigal, GSK. M.C.—director of Birmingham Health Partners Centre for Regulatory Science and Innovation, director of Centre for Patient Reported Outcomes Research, NIHR senior investigator; funding: NIHR, UKRI, NIHR Birmingham BRC, NIHR ARC WM, UK SPINE, European Regional Development

Fund DEMAND Hub, Health Data Research UK at the University of Birmingham, University Hospitals Birmingham NHS Foundation Trust, Innovate UK (part of UKRI), Macmillan Cancer Support, UCB Pharma, Janssen, GlaxoSmithKline, Gilead; personal fees: Astellas, Aparito, CIS Oncology, Halfloop, Takeda, Merck, Daiichi Sankyo, Glaukos, GlaxoSmithKline, Patient-Centered Outcomes Research Institute. A relative owns GlaxoSmithKline shares.

Additional information

Supplementary information The online version contains supplementary material available at <https://doi.org/10.1038/s41591-023-02665-1>.

Correspondence and requests for materials should be addressed to Ameeta Retzer.

Peer review information *Nature Medicine* thanks Afsan Bhadelia and Jonathan Jackson for their contribution to the peer review of this work. Primary Handling Editor: Jennifer Sargent, in collaboration with the *Nature Medicine* team.

Reprints and permissions information is available at www.nature.com/reprints.

Reporting Summary

Nature Portfolio wishes to improve the reproducibility of the work that we publish. This form provides structure for consistency and transparency in reporting. For further information on Nature Portfolio policies, see our [Editorial Policies](#) and the [Editorial Policy Checklist](#).

Statistics

For all statistical analyses, confirm that the following items are present in the figure legend, table legend, main text, or Methods section.

- | | |
|-------------------------------------|---|
| n/a | Confirmed |
| <input checked="" type="checkbox"/> | <input type="checkbox"/> The exact sample size (n) for each experimental group/condition, given as a discrete number and unit of measurement |
| <input checked="" type="checkbox"/> | <input type="checkbox"/> A statement on whether measurements were taken from distinct samples or whether the same sample was measured repeatedly |
| <input checked="" type="checkbox"/> | <input type="checkbox"/> The statistical test(s) used AND whether they are one- or two-sided
<i>Only common tests should be described solely by name; describe more complex techniques in the Methods section.</i> |
| <input checked="" type="checkbox"/> | <input type="checkbox"/> A description of all covariates tested |
| <input checked="" type="checkbox"/> | <input type="checkbox"/> A description of any assumptions or corrections, such as tests of normality and adjustment for multiple comparisons |
| <input checked="" type="checkbox"/> | <input type="checkbox"/> A full description of the statistical parameters including central tendency (e.g. means) or other basic estimates (e.g. regression coefficient) AND variation (e.g. standard deviation) or associated estimates of uncertainty (e.g. confidence intervals) |
| <input checked="" type="checkbox"/> | <input type="checkbox"/> For null hypothesis testing, the test statistic (e.g. F , t , r) with confidence intervals, effect sizes, degrees of freedom and P value noted
<i>Give P values as exact values whenever suitable.</i> |
| <input checked="" type="checkbox"/> | <input type="checkbox"/> For Bayesian analysis, information on the choice of priors and Markov chain Monte Carlo settings |
| <input checked="" type="checkbox"/> | <input type="checkbox"/> For hierarchical and complex designs, identification of the appropriate level for tests and full reporting of outcomes |
| <input checked="" type="checkbox"/> | <input type="checkbox"/> Estimates of effect sizes (e.g. Cohen's d , Pearson's r), indicating how they were calculated |

Our web collection on [statistics for biologists](#) contains articles on many of the points above.

Software and code

Policy information about [availability of computer code](#)

Data collection

Data analysis

For manuscripts utilizing custom algorithms or software that are central to the research but not yet described in published literature, software must be made available to editors and reviewers. We strongly encourage code deposition in a community repository (e.g. GitHub). See the Nature Portfolio [guidelines for submitting code & software](#) for further information.

Data

Policy information about [availability of data](#)

All manuscripts must include a [data availability statement](#). This statement should provide the following information, where applicable:

- Accession codes, unique identifiers, or web links for publicly available datasets
- A description of any restrictions on data availability
- For clinical datasets or third party data, please ensure that the statement adheres to our [policy](#)

Embase, MEDLINE, Google (Google search, Google images and Google scholar), Trip, National Grey Literature Collection and BASE databases were searched. Study data will be retained and securely stored by the University of Birmingham for 10 years post-collection, after which time it will be securely destroyed. The unedited workshop recordings contain identifiable data and cannot be shared. The anonymised detailed workshop summaries are available in Supplementary Appendix 2.

Research involving human participants, their data, or biological material

Policy information about studies with [human participants or human data](#). See also policy information about [sex, gender \(identity/presentation\), and sexual orientation](#) and [race, ethnicity and racism](#).

Reporting on sex and gender	These data have not been collected.
Reporting on race, ethnicity, or other socially relevant groupings	These data have not been collected.
Population characteristics	See above.
Recruitment	Individuals were recruited from the National Institute for Health and Care Research (NIHR) Birmingham Biomedical Research Centre (BRC) senior research team and the NIHR Birmingham BRC Equity, Diversity and Inclusion (EDI) public and patient involvement panel. Approaches were via email by the BRC operations team and the public involvement advisor overseeing public contribution. Recruitment continued on a rolling basis until each research theme was represented. Individuals indicating interest in participating in the workshop were provided with a participant information sheet and consent form. To promote accessibility, participants were offered a range of consenting options (electronic Word document, online Microsoft form, verbal consent via telephone) and the opportunity to discuss the research in advance of giving consent. Consent was taken prior to the workshop. Public contributor participants were remunerated for their time and expenses incurred during the workshop and preparation session. Self-selection bias was possible as participants were those likely to be interested in the topic, however, recruitment material did not indicate experience of EDI methodology was at all necessary but stated recruitment was on the basis of their own research experience. Participants were not recruited on the basis of personal characteristics, such as gender identity or ethnicity, and these data were not collected for workshop participants.
Ethics oversight	This study has undergone ethical review by the Research Ethics Committee at the University of Birmingham and was granted full approval in October 2022 (ERN_22-1182).

Note that full information on the approval of the study protocol must also be provided in the manuscript.

Field-specific reporting

Please select the one below that is the best fit for your research. If you are not sure, read the appropriate sections before making your selection.

Life sciences Behavioural & social sciences Ecological, evolutionary & environmental sciences

For a reference copy of the document with all sections, see [nature.com/documents/nr-reporting-summary-flat.pdf](https://www.nature.com/documents/nr-reporting-summary-flat.pdf)

Behavioural & social sciences study design

All studies must disclose on these points even when the disclosure is negative.

Study description	This was a mixed methods study involving a methodological systematic review and synthesis and a qualitative consensus workshop.
Research sample	<p>Participants were: (1) senior researchers from across the breadth of research undertaken in the Birmingham BRC, namely early phase, translational research in inflammatory arthritis, sarcopenia and multimorbidity; inflammatory liver disease; cancer inflammation; patient-reported outcomes; data, diagnostics and decision tools; infection and acute care; metabolic health in women; thrombo-inflammation; oral, intestinal and systemic health; and next generation therapies; and (2) patient and members of the public that formed the NIHR Birmingham EDI public and patient advisory panel. Demographic information was not collected but participants were recruited on the basis of their experience leading research and/or providing public contribution. This pool of participants was chosen because the research undertaken in the Birmingham BRC is representative of a broad range of research areas, impacting a diverse range of individuals and patient groups, and all have experience of research relating to populations residing in Birmingham, UK, a super-diverse city. However, the participants' experience relates to early phase and translational research and as such, their insights may not represent those in other areas of health research such as applied health research and data science. However, members of the research team are experienced in applied health research, mediating this to a degree. Participants were not recruited on the basis of their personal characteristics, such as gender identity or ethnicity, and these data were not collected for workshop participants.</p> <p>To identify academic and grey literature, Embase and MEDLINE, Google (Google search, Google images and Google scholar), Trip database, National Grey Literature Collection database and BASE databases were searched. Pertinent articles may have been missed in the literature search due to the decision to restrict to two academic databases. While this was mitigated through backward and forward citation searching; extensive grey literature searches; and developing strategies from previous systematic reviews, non-English language literature was excluded and though several grey literature databases were used, searches via Google would be geo-tagged and linked with UK sources, so unrepresentative of international non-academic literature.</p>
Sampling strategy	Purposive sampling was used to recruit workshop participants. The workshop was a one-off qualitative exercise with a fixed period of time, so seeking data saturation was not possible in this case. The sample was determined through estimations of feasibility based on experience of carrying out similar hybrid workshops to maximise interaction and data generation (doi: 10.1093/noajnl/vdad096, doi: 10.1371/journal.pone.0240518). Participants were given the opportunity to contribute further through review of workshop summaries and the study team's interpretation of their data.

Literature databases were searched without date limitation. The search strategy included Medical Subject Headings (MeSH) terms, broad search terms, phrases and keywords related to equity, diversity and inclusion in health research, accounting for variation in terminology used in this area (Supplementary Tables 2 and 3). These were refined through scoping searches, informed by strategies used in comparable systematic reviews. Forward and backward citation searching were used. Search terms and keywords were derived from the academic literature review search strategy and refined iteratively in consultation with search specialists and the patient and public involvement and engagement panel. Search terms were piloted in each database in a process where the retrieved records were checked for sensitivity and the terms re-worked and re-entered items that related to our aim were retrieved (Supplementary Table 4). Upon advice from the patient and public involvement panel, new terms were introduced based on those commonly used in the United Kingdom relating to ethnicity, reflecting categories used in census data.

Data collection	The workshop consisted of a series of presentations and facilitated discussions to draw upon the expertise of the group. Discussion topics related to the utility of the proposed Toolkit and any gaps or required changes, and potential barriers and facilitators for its use. The workshop was recorded using encrypted equipment and notes were taken. Discussions were summarised and the recordings used for verification. The presentations and draft Toolkit were re-shared with participants following the meeting for those who wished to contribute further. Those present were only the research team and participants. The research team were not blinded to the study aims and hypotheses.
Timing	The two-hour hybrid format workshop took place on November 14 2022.
Data exclusions	No data were excluded from analyses.
Non-participation	Two individuals declined participation due to diary conflicts, two individuals intending to participate did not do so due to unanticipated diary conflicts.
Randomization	Randomization was not used for participant sampling for the consensus workshop, which was purposive. Participants were divided for the focus group discussions pragmatically, whereby those joining remotely were placed in a discussion together. Participants joining the workshop in person were each placed alternatively by the research team in groups 1 and 2 in the order in which they were seated.

Reporting for specific materials, systems and methods

We require information from authors about some types of materials, experimental systems and methods used in many studies. Here, indicate whether each material, system or method listed is relevant to your study. If you are not sure if a list item applies to your research, read the appropriate section before selecting a response.

Materials & experimental systems

Methods

- | | |
|-------------------------------------|--|
| n/a | Involved in the study |
| <input checked="" type="checkbox"/> | <input type="checkbox"/> Antibodies |
| <input checked="" type="checkbox"/> | <input type="checkbox"/> Eukaryotic cell lines |
| <input checked="" type="checkbox"/> | <input type="checkbox"/> Palaeontology and archaeology |
| <input checked="" type="checkbox"/> | <input type="checkbox"/> Animals and other organisms |
| <input checked="" type="checkbox"/> | <input type="checkbox"/> Clinical data |
| <input checked="" type="checkbox"/> | <input type="checkbox"/> Dual use research of concern |
| <input checked="" type="checkbox"/> | <input type="checkbox"/> Plants |

- | | |
|-------------------------------------|---|
| n/a | Involved in the study |
| <input checked="" type="checkbox"/> | <input type="checkbox"/> ChIP-seq |
| <input checked="" type="checkbox"/> | <input type="checkbox"/> Flow cytometry |
| <input checked="" type="checkbox"/> | <input type="checkbox"/> MRI-based neuroimaging |

Plants

Seed stocks	<i>Report on the source of all seed stocks or other plant material used. If applicable, state the seed stock centre and catalogue number. If plant specimens were collected from the field, describe the collection location, date and sampling procedures.</i>
Novel plant genotypes	<i>Describe the methods by which all novel plant genotypes were produced. This includes those generated by transgenic approaches, gene editing, chemical/radiation-based mutagenesis and hybridization. For transgenic lines, describe the transformation method, the number of independent lines analyzed and the generation upon which experiments were performed. For gene-edited lines, describe the editor used, the endogenous sequence targeted for editing, the targeting guide RNA sequence (if applicable) and how the editor was applied.</i>
Authentication	<i>Describe any authentication procedures for each seed stock used or novel genotype generated. Describe any experiments used to assess the effect of a mutation and, where applicable, how potential secondary effects (e.g. second site T-DNA insertions, mosaicism, off-target gene editing) were examined.</i>