

Author Correction: Chronic stress promotes tumor growth and angiogenesis in a mouse model of ovarian carcinoma

Premal H. Thaker, Liz Y. Han, Aparna A. Kamat, Jesusa M. Arevalo, Rie Takahashi, Chunhua Lu, Nicholas B. Jennings, Guillermo Armaiz-Pena, James A. Bankson, Murali Ravoori, William M. Merritt, Yvonne G. Lin, Lingegowda S. Mangala, Tae Jin Kim, Robert L. Coleman, Charles N. Landen, Yang Li, Edward Felix, Angela M. Sanguino, Robert A. Newman, Mary Lloyd, David M. Gershenson, Vikas Kundra, Gabriel Lopez-Berestein, Susan K. Lutgendorf, Steven W. Cole and Anil K. Sood

Correction to: *Nature Medicine* <https://doi.org/10.1038/nm1447>, published online 23 July 2006.

In the version of this Letter initially published, there was an error in Fig. 2b. Two image panels in the top row for CD31 were inadvertent duplicates of Figure 4 of Kamat, A.A. et al. *Cancer Res.* <https://doi.org/10.1158/0008-5472.CAN-06-3282> (2007). Specifically, the second image, isoproterenol group, and fifth image, isoproterenol + propranolol group, were duplicates. The representative images are corrected below. The underlying data and conclusions presented in this Letter are not affected by the errors.

The updated Fig. 2b image is available in this Amendment.

Updated Fig 2b

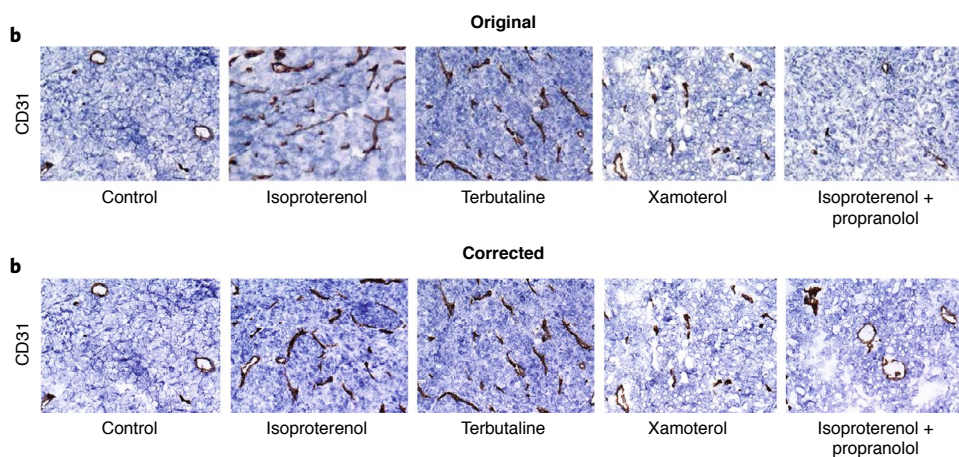


Fig. 2 | Original and Corrected.

Published online: 19 November 2021

<https://doi.org/10.1038/s41591-021-01566-5>

© The Author(s), under exclusive licence to Springer Nature America, Inc. 2021