

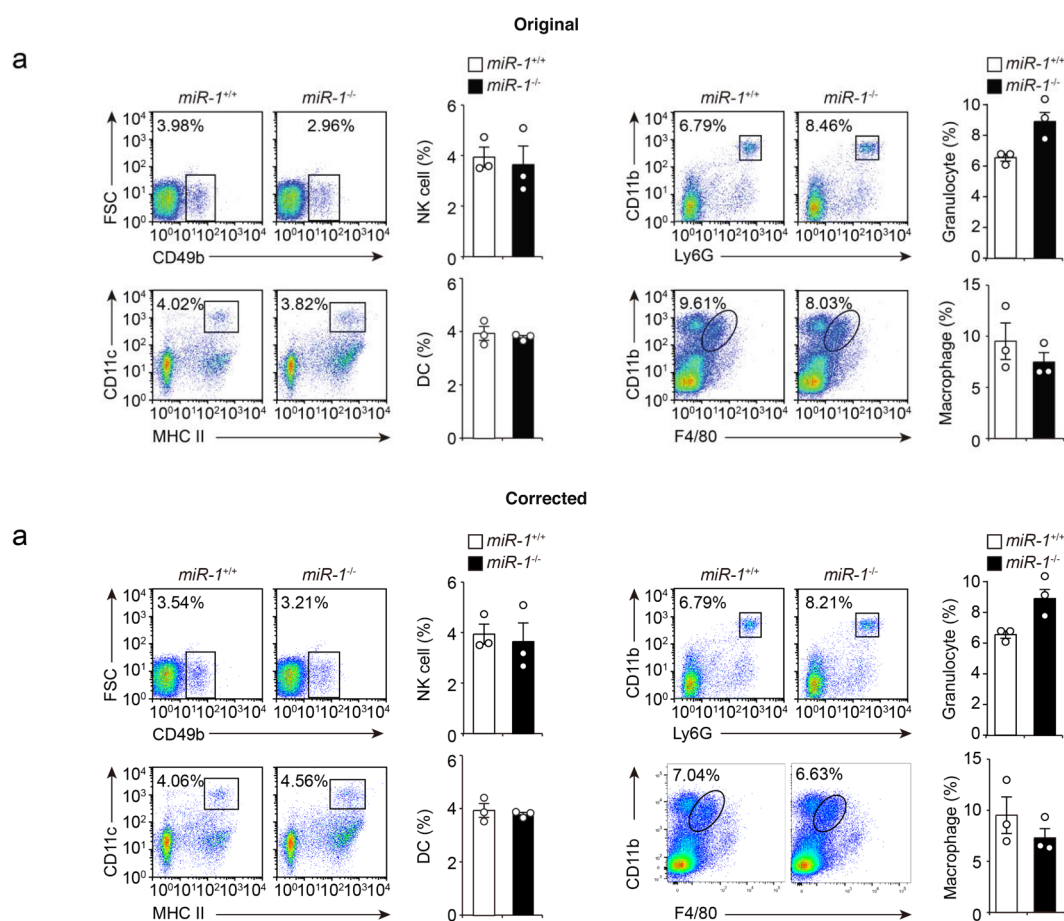


Author Correction: Inducible degradation of lncRNA Sros1 promotes IFN- γ -mediated activation of innate immune responses by stabilizing *Stat1* mRNA

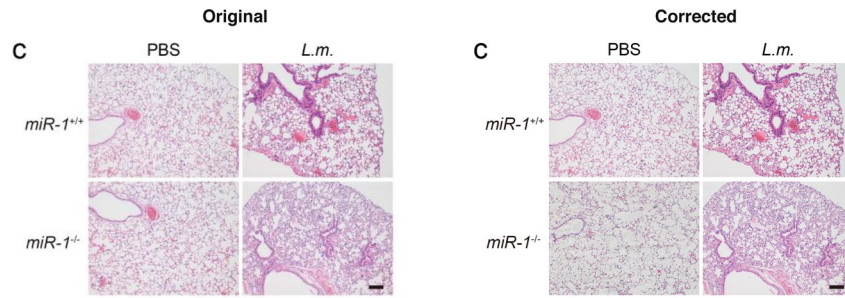
Henan Xu, Yan Jiang, Xiaoqing Xu, Xiaoping Su, Yang Liu, Yuanwu Ma, Yong Zhao, Zhongyang Shen, Bo Huang and Xuetao Cao

Correction to: *Nature Immunology* <https://doi.org/10.1038/s41590-019-0542-7>, published online 18 November 2019.

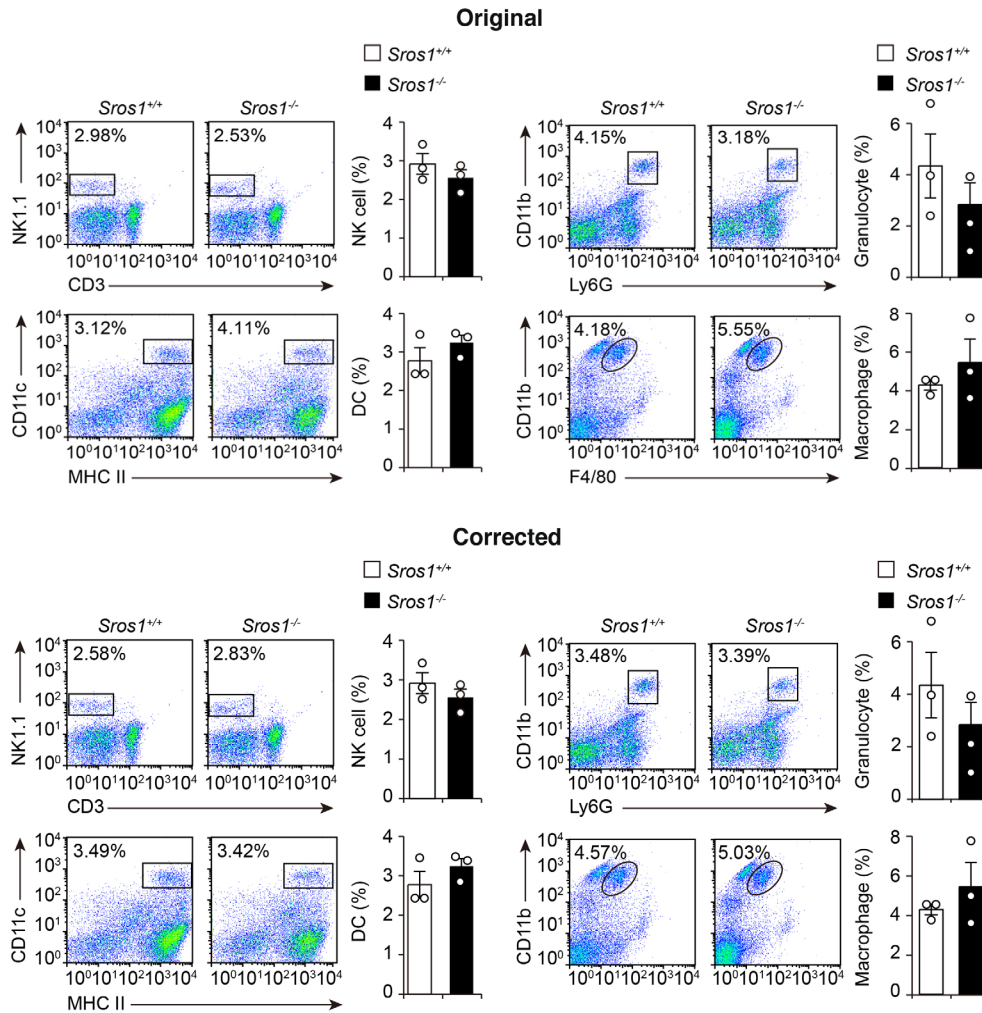
In the supplementary information originally posted for this article, in Supplementary Fig. 2a, the flow cytometry plot for the CD11b- and F4/80-stained *miR-1^{-/-}* sample represented an erroneous duplication of the plot for the *miR-1^{+/+}* sample; this has been corrected to show a flow cytometry plot from a *miR-1^{-/-}* sample. Representative plots from *miR-1^{+/+}* ($n = 3$) and *miR-1^{-/-}* ($n = 3$) mice are now included as Source Data. In Supplementary Fig. 2c, the histology images shown for the PBS-treated *miR-1^{-/-}* sample represented a different cut (generated through serial sectioning) from the PBS-treated *miR-1^{+/+}* sample presented in the same figure, erroneously labeled as *miR-1^{-/-}*. This has been corrected to show a representative image from a *miR-1^{-/-}* mouse treated with PBS. Representative data from *miR-1^{+/+}* mice treated with PBS ($n = 9$ mice from 3 independent experiments), *miR-1^{-/-}* mice treated with PBS ($n = 9$ mice from 3 independent experiments), *miR-1^{+/+}* mice treated with *L.m.* ($n = 9$ mice from 3 independent experiments) and *miR-1^{-/-}* mice treated with *L.m.* ($n = 12$ mice from 3 independent experiments) are now included as Source Data. In Supplementary Fig. 2a and Supplementary Fig. 5, the frequencies of cells in gates in all flow cytometry plots erroneously displayed the average frequencies calculated from multiple experiments. This has been corrected to show the frequency of cells in gates for each representative plot shown. The errors have been corrected in the HTML version of the article.



Supplementary Fig. 2a | Original and corrected.



Supplementary Fig. 2c | Original and corrected (Continued).



Supplementary Fig. 5 | Original and corrected.

Published online: 25 February 2020
<https://doi.org/10.1038/s41590-020-0630-8>

© The Author(s), under exclusive licence to Springer Nature America, Inc. 2020