

Author Correction: Aberrant ERG expression cooperates with loss of PTEN to promote cancer progression in the prostate

Brett S. Carver, Jennifer Tran, Anuradha Gopalan, Zhenbang Chen, Safa Shaikh, Arkaitz Carracedo, Andrea Alimonti, Caterina Nardella, Shohreh Varmeh, Peter T. Scardino, Carlos Cordon-Cardo, William Gerald and Pier Paolo Pandolfi

Correction to: *Nature Genetics* <https://doi.org/10.1038/ng.370>, published online 26 April 2009.

In the version of this article initially published, the images in Fig. 3c were inadvertently duplicated across the MSCV-ERG and MSCV-AKT-ERG experimental conditions. The interpretation of the results and conclusions is not affected, because ERG overexpression promoted cell migration in both the MSCV-ERG and MSCV-AKT-ERG experimental conditions. The original and corrected images are shown in the correction notice.

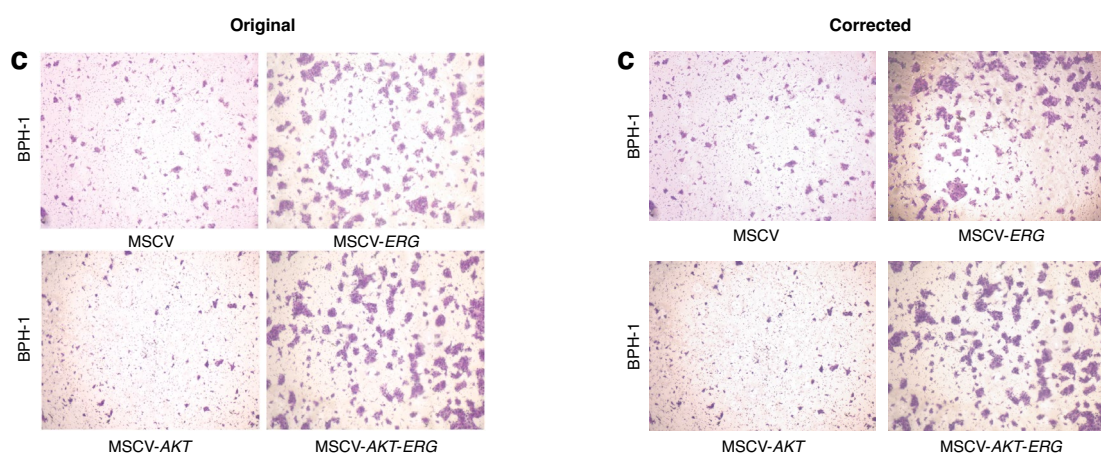


Fig. 3 | Original and Corrected.

Published online: 17 August 2020

<https://doi.org/10.1038/s41588-020-0688-0>

© The Author(s), under exclusive licence to Springer Nature America, Inc. 2020