
Accelerated Article Preview

ACE2 binding is an ancestral and evolvable trait of sarbecoviruses

Received: 18 July 2021

Accepted: 25 January 2022

Accelerated Article Preview Published
online 03 February 2022

Cite this article as: Starr, T. N. et al. ACE2 binding is an ancestral and evolvable trait of sarbecoviruses. *Nature* <https://doi.org/10.1038/s41586-022-04464-z> (2022).

Tyler N. Starr, Samantha K. Zepeda, Alexandra C. Walls, Allison J. Greaney, Sergey Alkhovsky, David Veeler & Jesse D. Bloom

This is a PDF file of a peer-reviewed paper that has been accepted for publication. Although unedited, the content has been subjected to preliminary formatting. Nature is providing this early version of the typeset paper as a service to our authors and readers. The text and figures will undergo copyediting and a proof review before the paper is published in its final form. Please note that during the production process errors may be discovered which could affect the content, and all legal disclaimers apply.

ACE2 binding is an ancestral and evolvable trait of sarbecoviruses

<https://doi.org/10.1038/s41586-022-04464-z>

Received: 18 July 2021

Accepted: 25 January 2022

Published online: 03 February 2022

Tyler N. Starr^{1,2,6}✉, Samantha K. Zepeda^{3,6}, Alexandra C. Walls³, Allison J. Greaney^{1,4}, Sergey Alkhovsky⁵, David Veessler^{2,3}✉ & Jesse D. Bloom^{1,2,4}✉

Two different sarbecoviruses have caused major human outbreaks in the last two decades^{1,2}. Both of these sarbecoviruses, SARS-CoV-1 and SARS-CoV-2, engage ACE2 via the spike receptor-binding domain (RBD)^{2–6}. However, binding to ACE2 orthologs from humans, bats, and other species has been observed only sporadically among the broader diversity of bat sarbecoviruses^{7–11}. Here, we use high-throughput assays¹² to trace the evolutionary history of ACE2 binding across a diverse range of sarbecoviruses and ACE2 orthologs. We find that ACE2 binding is an ancestral trait of sarbecovirus RBDs that has subsequently been lost in some clades. Furthermore, we reveal that bat sarbecoviruses from outside Asia can bind ACE2. Moreover, ACE2 binding is highly evolvable: for many sarbecovirus RBDs there are single amino-acid mutations that enable binding to new ACE2 orthologs. However, the effects of individual mutations can differ markedly between viruses, as illustrated by the N501Y mutation which enhances human ACE2 binding affinity of several SARS-CoV-2 variants of concern¹² but severely dampens it for SARS-CoV-1. Our results point to the deep ancestral origin and evolutionary plasticity of ACE2 binding, broadening consideration of the range of sarbecoviruses with spillover potential.

Both SARS-CoV-2 and SARS-CoV-1 utilize human ACE2 as their receptor^{2–6}. Sampling of bats has identified multiple lineages of sarbecoviruses with RBDs exhibiting different ACE2 binding properties^{7–11,13–19} that are exchanged via recombination^{8,19,20}. Prior to the emergence of SARS-CoV-2, all bat sarbecoviruses with a demonstrated ability to bind any ACE2 ortholog contained RBDs related to SARS-CoV-1 and were sampled from *Rhinolophus sinicus* and *R. affinis* bats in Yunnan province in southwest China^{7,8,11,21,22}. More recently, sarbecoviruses related to SARS-CoV-2 that bind ACE2 have been found more widely across Asia and from a broader diversity of *Rhinolophus* species^{2,16,23–25}. However, ACE2 binding has not been observed within a prevalent group of sarbecovirus RBDs sampled in southeast Asia (RBD “Clade 2”)^{7,8,17}, nor in distantly related sarbecoviruses from Africa and Europe (RBD “Clade 3”)^{7,19} (Figure 1a). Therefore, it is unclear whether ACE2 binding is an ancestral trait of sarbecovirus RBDs that has been lost in some RBD lineages, or a trait that was acquired more recently in a subset of Asian sarbecovirus RBDs^{19,20}. As ACE2 is also variable among *Rhinolophus* bats, particularly in the surface recognized by sarbecoviruses^{26–28}, it is important to understand how sarbecoviruses acquire the ability to bind new ACE2 orthologs, including that of humans, via amino-acid mutations.

Survey of sarbecovirus ACE2 binding

To trace the evolutionary history of sarbecovirus binding to ACE2, we assembled a gene library encoding 45 sarbecovirus RBDs spanning all four known RBD phylogenetic clades (Fig. 1a, b and Extended

Data Fig. 1). We cloned the RBD library into a yeast-surface display platform that enables high-throughput measurement of ACE2 binding avidities via titration assays combining fluorescence-activated cell sorting (FACS) and deep sequencing¹² (Extended Data Fig. 2a–d). We also assembled a panel of recombinant, dimeric ACE2 proteins from human, civet, pangolin, mouse, and two alleles each from *R. affinis* and *R. sinicus* bats²⁶ (Fig. 1c). The *R. affinis* alleles represent the two distinct RBD-interface sequences found among 23 *R. affinis* bats from Yunnan and Hubei, China. The *R. sinicus* alleles represent two of the eight distinct RBD-interface sequences found among 25 *R. sinicus* bats from Yunnan, Hubei, Guangdong, and Guangxi provinces and Hong Kong²⁶, including one allele (3364) that is closest to consensus among the 8 RBD-interface sequences, and another (1434) that does not support entry by some Clade 1a sarbecoviruses²⁶. We measured the apparent dissociation constant ($K_{D,app}$) of each RBD for each of the eight ACE2 orthologs (Fig. 1b, d and Extended Data Fig. 2). We performed all experiments in duplicate using independently constructed libraries, and the measurements were highly correlated between replicates ($R^2 > 0.99$, Extended Data Fig. 2g).

Consistent with a prior survey of human ACE2-mediated cellular infectivity⁷, human ACE2 binding is restricted to RBDs within the SARS-CoV-1 and SARS-CoV-2 clades (Fig. 1b), although binding affinities vary among RBDs within these clades. Specifically, the RBDs from SARS-CoV-2 and related viruses from pangolins bind human ACE2 with high affinity, while the RBD from the bat virus RaTG13 exhibits much lower affinity¹⁶. The RBDs of SARS-CoV-1 isolates from the 2002–2003

¹Basic Sciences Division, Fred Hutchinson Cancer Research Center, Seattle, WA, USA. ²Howard Hughes Medical Institute, Seattle, WA, USA. ³Department of Biochemistry, University of Washington, Seattle, WA, USA. ⁴Department of Genome Sciences, University of Washington, Seattle, WA, USA. ⁵N.F. Gamleya National Center of Epidemiology and Microbiology, Ministry of Health of the Russian Federation, Moscow, Russia. ⁶These authors contributed equally: Tyler N. Starr, Samantha K. Zepeda. ✉e-mail: tstarr@fredhutch.org; dveessler@uw.edu; jbloom@fredhutch.org

epidemic bind human ACE2 strongly, whereas RBDs from civet and sporadic 2004 human isolates (GD03T0013, GZ0402) show weaker binding, consistent with their civet origin and limited transmission^{29,30}. SARS-CoV-1-related bat virus RBDs bind to human ACE2, in some cases with higher affinity than SARS-CoV-1 itself.

Binding to civet ACE2 was only detected within the SARS-CoV-1 clade whereas pangolin ACE2 binding is more widespread within the SARS-CoV-2 clade, consistent with viruses isolated from civet or pangolin partitioning specifically within each of these clades. Mice are not a natural host of sarbecoviruses, and RBDs from the SARS-CoV-1 and SARS-CoV-2 clades only bind mouse ACE2 sporadically, typically with modest to weak affinity relative to other ACE2 orthologs. The highest binding affinity for mouse ACE2 is found in the cluster of RBDs related to RsSHC014, which can mediate infection and pathogenesis in mice³¹.

Binding to ACE2 from *R. affinis* and particularly *R. sinicus* bats varies sharply among strains in the SARS-CoV-1 and SARS-CoV-2 clades, consistent with an evolutionary arms race driving ACE2 variation in *Rhinolophus* bats^{26,27}. The two *R. sinicus* bat ACE2 alleles tested only interacted with SARS-CoV-1 isolates and the bat RsSHC014-cluster RBDs, which are notable for their broad ACE2-binding specificity in our assay. In contrast, we detected strong binding to both *R. affinis* ACE2 alleles among many RBDs in the SARS-CoV-1 and SARS-CoV-2 clades. However, the RBDs of the two viruses sampled from *R. affinis* in our panel bound only modestly (LYRa11) or very weakly (RaTG13) to the *R. affinis* ACE2 alleles that we tested.

Strikingly, we detected binding to *R. affinis* ACE2s by the RBD of the BtKY72 virus from Kenya¹³ (Fig. 1b, d), the first described binding to any ACE2 ortholog for a sarbecovirus outside of Asia^{7,19}. To validate this finding, we purified the BtKY72 RBD and *R. affinis* ACE2-Fc fusion proteins recombinantly expressed in human cells and characterized their interaction using biolayer interferometry (BLI). In agreement with the yeast-display results, the BtKY72 RBD bound to the *R. affinis* 9479 ACE2 and more weakly to the *R. affinis* 787 allele (Fig. 1e and Extended Data Fig. 3a). Furthermore, HEK293T cells transfected with the *R. affinis* 9479 or 787 ACE2 alleles supported entry of vesicular stomatitis virus (VSV) particles pseudotyped with the BtKY72 spike, thereby demonstrating ACE2 is a bona fide entry receptor for this virus (Fig. 1f and Extended Data Fig. 3c, d). The geographic range of *R. affinis* does not extend outside of Asia¹⁵, but this result indicates that BtKY72 may bind ACE2 orthologs of bats found in Africa, though the full range of non-Asian bat species that harbor sarbecoviruses and their ACE2 sequences are underexplored^{13,14,19,32}.

We did not detect ACE2 binding by any of the Clade 2 RBDs. Nine of the 23 Clade 2 RBDs in our panel were sampled from *R. sinicus*, including in the same caves—and even co-infecting the same *R. sinicus* bats⁸—as ACE2-utilizing SARS-CoV-1-related RBDs. We tested binding by two Clade 2 RBDs isolated from *R. sinicus* (YN2013 from Yunnan and HKU3-1 from Hong Kong Special Administrative Region [HKSAR]) to an expanded ACE2 panel comprising all RBD-interface sequences observed in *R. sinicus* bats²⁶, including those sampled in Yunnan and HKSAR. In contrast to SARS-CoV-1 Urbani and RsSHC014 (a Clade 1a RBD isolated from *R. sinicus* in Yunnan¹¹), YN2013 and HKU3-1 RBDs did not bind to any of the eight *R. sinicus* ACE2 alleles (Extended Data Fig. 4). Prior experiments with Clade 2 RBDs have also demonstrated a lack of binding to *R. pearsonii*¹⁷ and human^{7,8,12,17} ACE2. Clade 2 RBDs have two large deletions within the receptor-binding motif^{7,8,19}, which has led to the hypothesis that this clade utilizes some unidentified alternative receptor, which could be bound by either the RBD or the spike N-terminal domain^{33–36}. Our results are consistent with this hypothesis, though we cannot rule out that Clade 2 RBDs bind other ACE2 orthologs that have not yet been tested.

Ancestral origins of ACE2 binding

Our finding that the BtKY72 RBD binds ACE2 suggests that ACE2 binding was present in the ancestor of all sarbecoviruses prior to the

split of Asian and non-Asian RBD clades (Fig. 2a). To test this hypothesis, we used ancestral sequence reconstruction³⁷ to infer plausible sequences representing ancestral nodes on the sarbecovirus RBD phylogeny (Fig. 2a and Extended Data Fig. 5a). We evaluated ACE2 binding for the most probable reconstructed ancestral sequences (Fig. 2b and Extended Data Fig. 5b) and in alternative reconstructions that incorporate statistical or phylogenetic ambiguities inherent to ancestral reconstruction (Extended Data Fig. 6). Consistent with the distribution of ACE2 binding among extant sarbecoviruses, the reconstructed ancestor of all sarbecovirus RBDs (AncSarbecovirus) bound the *R. affinis* 9479 ACE2 allele (Fig. 2b). Broader ACE2 binding (including to human ACE2) was acquired on the branch connecting AncSarbecovirus to the ancestor of the three Asian sarbecovirus RBD clades (AncAsia). ACE2 binding was then lost along the branch to the Clade 2 ancestor, due to the combination of 48 amino-acid substitutions and 2 deletions within the ACE2-binding region that occurred along this branch (Fig. 2c).

This evolutionary history of ACE2 binding is robust to some but not all explorations of uncertainty in our phylogenetic reconstructions^{38,39}. The key phenotypes represented in Fig. 2b are robust to uncertainties in the topology of the RBD phylogeny (Extended Data Fig. 6a, b) or possible recombination within the RBD impacting the cluster of RBDs related to RsSHC014 (Extended Data Fig. 6c–f). However, statistical uncertainty in the identity of some ACE2-contact positions impacts our inferences, with some reasonably plausible “second-best” reconstructed states altering ancestral phenotypes (Extended Data Fig. 6b). Nonetheless, our hypothesis of an ancestral origin of sarbecovirus ACE2 binding is supported by the most plausible ancestral reconstructions as well as the distribution of ACE2 binding among directly sampled sarbecovirus RBDs in Fig. 1a, b.

Evolvability of ACE2 binding

To explore how easily RBDs can acquire ACE2 binding via single amino-acid mutations, we constructed mutant libraries in 14 RBD backgrounds spanning the RBD phylogeny. In each background, we introduced all single amino-acid mutations at six RBD positions previously implicated in the evolution of receptor binding in SARS-CoV-2 and SARS-CoV-1^{12,40} (SARS-CoV-2 residues L455, F486, Q493, S494, Q498, and N501, Fig. 3a; we use SARS-CoV-2 numbering for mutations in all homologs below). We recovered nearly all the intended 1,596 mutations, and measured binding of each mutant RBD to each ACE2 ortholog via high-throughput titrations as described above.

The results show that ACE2 binding is a remarkably evolvable trait (Fig. 3b, c and Extended Data Fig. 7). In virtually all cases in which a parental RBD binds a particular ACE2, there are single amino-acid mutations that improve binding by >5-fold. Therefore, ACE2 binding can be easily enhanced via mutation, which may facilitate the frequent host jumps seen among sarbecoviruses⁴¹. Notably, our data on mouse ACE2 binding could inform the development of mouse-adapted sarbecovirus strains for *in vivo* studies^{31,42–44}, including potentially safer strains that bind to mouse but not human ACE2 (see Extended Data Fig. 8 for details).

In the majority of cases where an RBD does not bind a particular ACE2 ortholog, single mutations can confer low to moderate binding affinity (Fig. 3b, c). The only exceptions are BM48-31 and AncClade2, for which none of the tested mutations enabled binding to any of the ACE2s. We found that the mutation K493Y in AncSarbecovirus enables binding to human ACE2 (Fig. 3b and Extended Data Fig. 7), although this particular mutation did not occur on the branch to AncAsia where we inferred human ACE2 binding was historically acquired, illustrating the existence of multiple evolutionary paths to acquiring human ACE2 binding. We identified single mutations at positions 493, 498, and 501 that enable the BtKY72 RBD to bind human ACE2 (Fig. 3b and Extended Data Fig. 7), suggesting human ACE2 binding is evolutionarily accessible in this lineage.

We validated that mutations K493Y and T498W enable the RBD of the African sarbecovirus BtKY72 to interact with human ACE2 using purified recombinant proteins. Binding to human ACE2-Fc is not detectable with the parental BtKY72 RBD using BLI but is conferred by T498W and enhanced for the K493Y/T498W double mutant (Fig. 3d and Extended Data Fig. 3b). To evaluate if the observed binding translated into cell entry, we generated VSV particles pseudotyped with the wildtype or mutant BtKY72 spikes and tested entry in HEK293T cells expressing human ACE2. We detected robust spike-mediated entry for the K493Y/T498W double mutant but not the T498W single mutant (Fig. 3e and Extended Data Fig. 3c, e), reflecting their apparent avidities (Fig. 3d) and confirming the evolvability of human ACE2 binding in this African sarbecovirus lineage.

Last, we explored how the mutations that enhance ACE2 binding differ among sarbecovirus backgrounds, reflecting epistatic turnover in mutation effects^{12,45}. For example, the N501Y mutation increases human ACE2 binding affinity for SARS-CoV-2 where it has arisen in variants of concern⁴⁶, but the homologous mutation in the SARS-CoV-1 RBD (position 487) is highly deleterious for human ACE2 binding (Fig. 3f). More broadly, variation in mutant effects increases as RBD sequences diverge (Fig. 3g and Extended Data Fig. 9). However, the rate of this epistatic turnover varies across positions—for example, the effects on human ACE2 binding for mutations at positions 486 and 494 remain relatively constant across sequence backgrounds, while variability in effects of mutations at positions 498 and 501 increases substantially as RBDs diverge.

New sarbecovirus lineages bind ACE2

Given that ACE2 binding is an ancestral sarbecovirus trait with plastic evolutionary potential, unsampled sarbecovirus lineages are likely capable of binding ACE2 and evolving to bind human ACE2 unless these traits have been specifically lost as occurred in Clade 2. To test this idea, we investigated sarbecoviruses reported after the initiation of our study, including viruses from Africa¹⁹ and Europe^{32,47} and a new RBD lineage represented by RsYN04 from a *R. stheno* bat in Yunnan, China¹⁵, which branches separately from the four RBD clades previously described (Fig. 4a).

We determined the ACE2-binding capabilities of these RBDs using our yeast-display platform. We found that two newly described sarbecoviruses from the Caucasus region of Russia³² bind ACE2 (Fig. 4b): the Khosta-1 RBD binds to *R. affinis* ACE2s with avidity that is improved by the T498W mutation, and strikingly, the Khosta-2 RBD binds to human ACE2 even in the absence of mutation. The Khosta-2 RBD was also recently shown to allow cell entry via human ACE2⁴⁸. This finding indicates that the evolvability of human ACE2 binding that we describe for other African and European sarbecoviruses has been realized in naturally circulating viruses that are geographically and phylogenetically separated from the southeast Asian clades from which spillover has been described to date. Our results also reinforce our observation of ACE2 binding in African sarbecoviruses (Fig. 4c): like BtKY72, RBDs of the newly described African sarbecoviruses PDF-2380 and PRD-0038¹⁹ bind *R. affinis* ACE2s, and the K493Y/T498W double mutant confers human ACE2 binding to the PRD-0038 RBD as it does for BtKY72. Last, the uniquely branching RsYN04 RBD binds to *R. affinis* 787 ACE2 (Fig. 4d), as was recently shown for the closely related RaTG15 spike⁴⁹. The RsYN04 RBD can also acquire binding to human ACE2 through the single T498W mutation. Incorporation of newly described sarbecovirus sequences into an updated phylogenetic reconstruction of the AncSarbecovirus RBD sequence reaffirms the conclusion that the ancestral sarbecovirus binds bat ACE2 and can evolve human ACE2 binding via single amino-acid mutation (Extended Data Fig. 10). These results illustrate that the ancestral traits of ACE2 binding and ability to evolve human ACE2 binding are maintained in geographically and phylogenetically diverse sarbecoviruses, including lineages that are just beginning to be described^{13,15,19,32,49}.

Discussion

Our experiments reveal that binding to bat ACE2 is an ancestral trait of sarbecoviruses that is also present in viruses from outside of Asia^{13,19}. Binding to human ACE2 arose in the common ancestor of SARS-CoV-1 and SARS-CoV-2-related RBDs prior to their divergence, and human ACE2 binding is evolvable in other phylogenetic clades. Binding to the ACE2 orthologs we tested was then lost on the branch leading to the Clade 2 RBDs, which either bind an alternative receptor or ACE2 orthologs not evaluated here. These results imply that unsampled RBD lineages in the phylogenetic interval between BtKY72 and SARS-CoV-1/SARS-CoV-2 likely utilize ACE2 as an entry receptor and are capable of evolving affinity for human ACE2. Indeed, the Khosta-2 virus from Russia is an example of a RBD where this evolutionary potential for human ACE2 binding has been realized.

Our work also shows that ACE2 binding is a highly evolvable trait of sarbecovirus RBDs. For every ACE2-binding RBD we studied, there were single amino-acid mutations that enhanced affinity for ACE2 orthologs a RBD could already bind to or that conferred binding to new ACE2 orthologs from different species. Host jumps are common among the wide diversity of bats that are naturally infected with these viruses^{8,15,41}. In addition to frequent exchange of RBDs among viral backbones via recombination^{8,19,20}, the evolutionary plasticity of RBD binding to ACE2 is likely a key contributor to the ecological dynamics of sarbecoviruses, and perhaps other coronaviruses that likewise frequently transmit across species⁵⁰. Because the effects of RBD mutations on ACE2 binding can differ across sarbecovirus backgrounds, it is not trivial to predict the ACE2 binding properties of a given RBD solely from its sequence. Therefore, high-throughput approaches such as the one we have used here, which enables rapid and comprehensive measurement of ACE2 binding affinities of RBD variants in a non-viral context, can aid efforts to understand the evolutionary diversity and dynamics of sarbecoviruses and develop broadly protective therapeutics.

Sarbecoviruses are of particular concern as two different strains have caused human outbreaks. Although human infectivity depends on many factors, the ability to bind human receptor is certainly a key factor. Our results show that the capacity of sarbecoviruses to bind human ACE2 is evolvable and has arisen independently in regions outside of southeast Asia. Our high-throughput yeast-display platform enables study of possible host tropism of sarbecoviruses without requiring work with replication-competent viruses that can pose biosafety concerns. The geographic breadth of ACE2 binding we describe suggests that care should be taken in the sampling and study of replication-competent sarbecoviruses even outside regions like southeast Asia where spillover potential is considered greatest, and that efforts to develop vaccines and antibody therapeutics for pandemic preparedness should consider sarbecoviruses circulating worldwide.

Online content

Any methods, additional references, Nature Research reporting summaries, source data, extended data, supplementary information, acknowledgements, peer review information; details of author contributions and competing interests; and statements of data and code availability are available at <https://doi.org/10.1038/s41586-022-04464-z>.

1. Cui, J., Li, F. & Shi, Z.-L. Origin and evolution of pathogenic coronaviruses. *Nat. Rev. Microbiol.* **17**, 181–192 (2019).
2. Zhou, P. et al. A pneumonia outbreak associated with a new coronavirus of probable bat origin. *Nature* **579**, 270–273 (2020).
3. Li, W. et al. Angiotensin-converting enzyme 2 is a functional receptor for the SARS coronavirus. *Nature* **426**, 450–454 (2003).
4. Walls, A. C. et al. Structure, Function, and Antigenicity of the SARS-CoV-2 Spike Glycoprotein. *Cell* **181**, 281–292.e6 (2020).
5. Wrapp, D. et al. Cryo-EM structure of the 2019-nCoV spike in the prefusion conformation. *Science* **367**, 1260–1263 (2020).

6. Hoffmann, M. et al. SARS-CoV-2 Cell Entry Depends on ACE2 and TMPRSS2 and Is Blocked by a Clinically Proven Protease Inhibitor. *Cell* **181**, 271–280.e8 (2020).
7. Letko, M., Marzi, A. & Munster, V. Functional assessment of cell entry and receptor usage for SARS-CoV-2 and other lineage B betacoronaviruses. *Nat Microbiol* **5**, 562–569 (2020).
8. Hu, B. et al. Discovery of a rich gene pool of bat SARS-related coronaviruses provides new insights into the origin of SARS coronavirus. *PLoS Pathog.* **13**, e1006698 (2017).
9. Li, W. et al. Bats are natural reservoirs of SARS-like coronaviruses. *Science* **310**, 676–679 (2005).
10. Lau, S. K. P. et al. Severe acute respiratory syndrome coronavirus-like virus in Chinese horseshoe bats. *Proc. Natl. Acad. Sci. U. S. A.* **102**, 14040–14045 (2005).
11. Ge, X.-Y. et al. Isolation and characterization of a bat SARS-like coronavirus that uses the ACE2 receptor. *Nature* **503**, 535–538 (2013).
12. Starr, T. N. et al. Deep Mutational Scanning of SARS-CoV-2 Receptor Binding Domain Reveals Constraints on Folding and ACE2 Binding. *Cell* **182**, 1295–1310.e20 (2020).
13. Tao, Y. & Tong, S. Complete Genome Sequence of a Severe Acute Respiratory Syndrome-Related Coronavirus from Kenyan Bats. *Microbiol Resour Announc* **8**, e00548–19 (2019).
14. Drexler, J. F. et al. Genomic characterization of severe acute respiratory syndrome-related coronavirus in European bats and classification of coronaviruses based on partial RNA-dependent RNA polymerase gene sequences. *J. Virol.* **84**, 11336–11349 (2010).
15. Zhou, H. et al. Identification of novel bat coronaviruses sheds light on the evolutionary origins of SARS-CoV-2 and related viruses. *Cell* **184**, 4380–4391.e14, <https://doi.org/10.1016/j.cell.2021.06.008> (2021).
16. Liu, K. et al. Binding and molecular basis of the bat coronavirus RaTG13 virus to ACE2 in humans and other species. *Cell* **184**, 3438–3451.e10 (2021).
17. Ren, W. et al. Difference in Receptor Usage between Severe Acute Respiratory Syndrome (SARS) Coronavirus and SARS-Like Coronavirus of Bat Origin. *JVI* **82**, 1899–1907 (2008).
18. Becker, M. M. et al. Synthetic recombinant bat SARS-like coronavirus is infectious in cultured cells and in mice. *Proc. Natl. Acad. Sci. U. S. A.* **105**, 19944–19949 (2008).
19. Wells, H. L. et al. The evolutionary history of ACE2 usage within the coronavirus subgenus Sarbecovirus. *Virus Evol* **7**, veab007 (2021).
20. Boni, M. F. et al. Evolutionary origins of the SARS-CoV-2 sarbecovirus lineage responsible for the COVID-19 pandemic. *Nature Microbiology* **5**, 1408–1417, <https://doi.org/10.1038/s41564-020-0771-4> (2020).
21. He, B. et al. Identification of diverse alphacoronaviruses and genomic characterization of a novel severe acute respiratory syndrome-like coronavirus from bats in China. *J. Virol.* **88**, 7070–7082 (2014).
22. Yang, X.-L. et al. Isolation and Characterization of a Novel Bat Coronavirus Closely Related to the Direct Progenitor of Severe Acute Respiratory Syndrome Coronavirus. *J. Virol.* **90**, 3253–3256 (2015).
23. Lam, T. T.-Y. et al. Identifying SARS-CoV-2-related coronaviruses in Malayan pangolins. *Nature* **583**, 282–285 (2020).
24. Murakami, S. et al. Detection and Characterization of Bat Sarbecovirus Phylogenetically Related to SARS-CoV-2, Japan. *Emerg. Infect. Dis.* **26**, 3025–3029 (2020).
25. Hul, V. et al. A novel SARS-CoV-2 related coronavirus in bats from Cambodia. *bioRxiv* 2021.01.26.428212 <https://doi.org/10.1101/2021.01.26.428212> (2021).
26. Guo, H. et al. Evolutionary Arms Race between Virus and Host Drives Genetic Diversity in Bat Severe Acute Respiratory Syndrome-Related Coronavirus Spike Genes. *J. Virol.* **94**, e00902–20 (2020).
27. Demogines, A., Farzan, M. & Sawyer, S. L. Evidence for ACE2-utilizing coronaviruses (CoVs) related to severe acute respiratory syndrome CoV in bats. *J. Virol.* **86**, 6350–6353 (2012).
28. Mou, H. et al. Mutations derived from horseshoe bat ACE2 orthologs enhance ACE2-Fc neutralization of SARS-CoV-2. *PLoS Pathog.* **17**, e1009501 (2021).
29. Li, W. et al. Receptor and viral determinants of SARS-coronavirus adaptation to human ACE2. *EMBO J.* **24**, 1634–1643 (2005).
30. Song, H.-D. et al. Cross-host evolution of severe acute respiratory syndrome coronavirus in palm civet and human. *Proc. Natl. Acad. Sci. U. S. A.* **102**, 2430–2435 (2005).
31. Menachery, V. D. et al. A SARS-like cluster of circulating bat coronaviruses shows potential for human emergence. *Nat. Med.* **21**, 1508–1513 (2015).
32. Alkhovsky, S. V. et al. SARS-like coronaviruses in horseshoe bats (*Rhinolophus* spp.) in Russia, 2020. *bioRxiv* 2021.05.17.444362 <https://doi.org/10.1101/2021.05.17.444362> (2021).
33. Reguera, J., Mudgal, G., Santiago, C. & Casasnovas, J. M. A structural view of coronavirus-receptor interactions. *Virus Res.* **194**, 3–15 (2014).
34. Tortorici, M. A. & Veerles, D. Structural insights into coronavirus entry. *Adv. Virus Res.* **105**, 93–116 (2019).
35. Tortorici, M. A. et al. Structural basis for human coronavirus attachment to sialic acid receptors. *Nat. Struct. Mol. Biol.* **26**, 481–489 (2019).
36. Bosch, B. J., Huizinga, E. G. & De Groot, R. J. Human coronaviruses OC43 and HKU1 bind to 9-O-acetylated sialic acids via a conserved receptor-binding site in spike protein domain A. *Proc Nat Acad Sci USA* (2019).
37. Thornton, J. W. Resurrecting ancient genes: experimental analysis of extinct molecules. *Nat. Rev. Genet.* **5**, 366–375 (2004).
38. Eick, G. N., Bridgham, J. T., Anderson, D. P., Harms, M. J. & Thornton, J. W. Robustness of Reconstructed Ancestral Protein Functions to Statistical Uncertainty. *Mol. Biol. Evol.* **34**, 247–261 (2017).
39. Hanson-Smith, V., Kolaczkowski, B. & Thornton, J. W. Robustness of ancestral sequence reconstruction to phylogenetic uncertainty. *Mol. Biol. Evol.* **27**, 1988–1999 (2010).
40. Wan, Y., Shang, J., Graham, R., Baric, R. S. & Li, F. Receptor Recognition by the Novel Coronavirus from Wuhan: an Analysis Based on Decade-Long Structural Studies of SARS Coronavirus. *J. Virol.* **94**, e00127–20 (2020).
41. Latinne, A. et al. Origin and cross-species transmission of bat coronaviruses in China. *Nat. Commun.* **11**, 4235 (2020).
42. Dinnon, K. H. 3rd et al. A mouse-adapted model of SARS-CoV-2 to test COVID-19 countermeasures. *Nature* **586**, 560–566 (2020).
43. Roberts, A. et al. A mouse-adapted SARS-coronavirus causes disease and mortality in BALB/c mice. *PLoS Pathog.* **3**, e5 (2007).
44. Menachery, V. D. et al. SARS-like WIV1-CoV poised for human emergence. *Proc. Natl. Acad. Sci. U. S. A.* **113**, 3048–3053 (2016).
45. Starr, T. N. & Thornton, J. W. Epistasis in protein evolution. *Protein Sci.* **25**, 1204–1218 (2016).
46. Tao, K. et al. The biological and clinical significance of emerging SARS-CoV-2 variants. *Nat. Rev. Genet.* **22**, 757–773, <https://doi.org/10.1038/s41576-021-00408-x> (2021).
47. Crook, J. M. et al. Metagenomic identification of a new sarbecovirus from horseshoe bats in Europe. *Sci. Rep.* **11**, 1–9 (2021).
48. Seifert, S. N. & Letko, M. C. A sarbecovirus found in Russian bats uses human ACE2. *bioRxiv* 2021.12.05.471310 <https://doi.org/10.1101/2021.12.05.471310> (2021).
49. Guo, H. et al. Identification of a novel lineage bat SARS-related coronaviruses that use bat ACE2 receptor. *bioRxiv* 2021.05.21.445091 <https://doi.org/10.1101/2021.05.21.445091> (2021).
50. Menachery, V. D., Graham, R. L. & Baric, R. S. Jumping species—a mechanism for coronavirus persistence and survival. *Curr. Opin. Virol.* **23**, 1–7 (2017).

Publisher's note Springer Nature remains neutral with regard to jurisdictional claims in published maps and institutional affiliations.

© The Author(s), under exclusive licence to Springer Nature Limited 2022

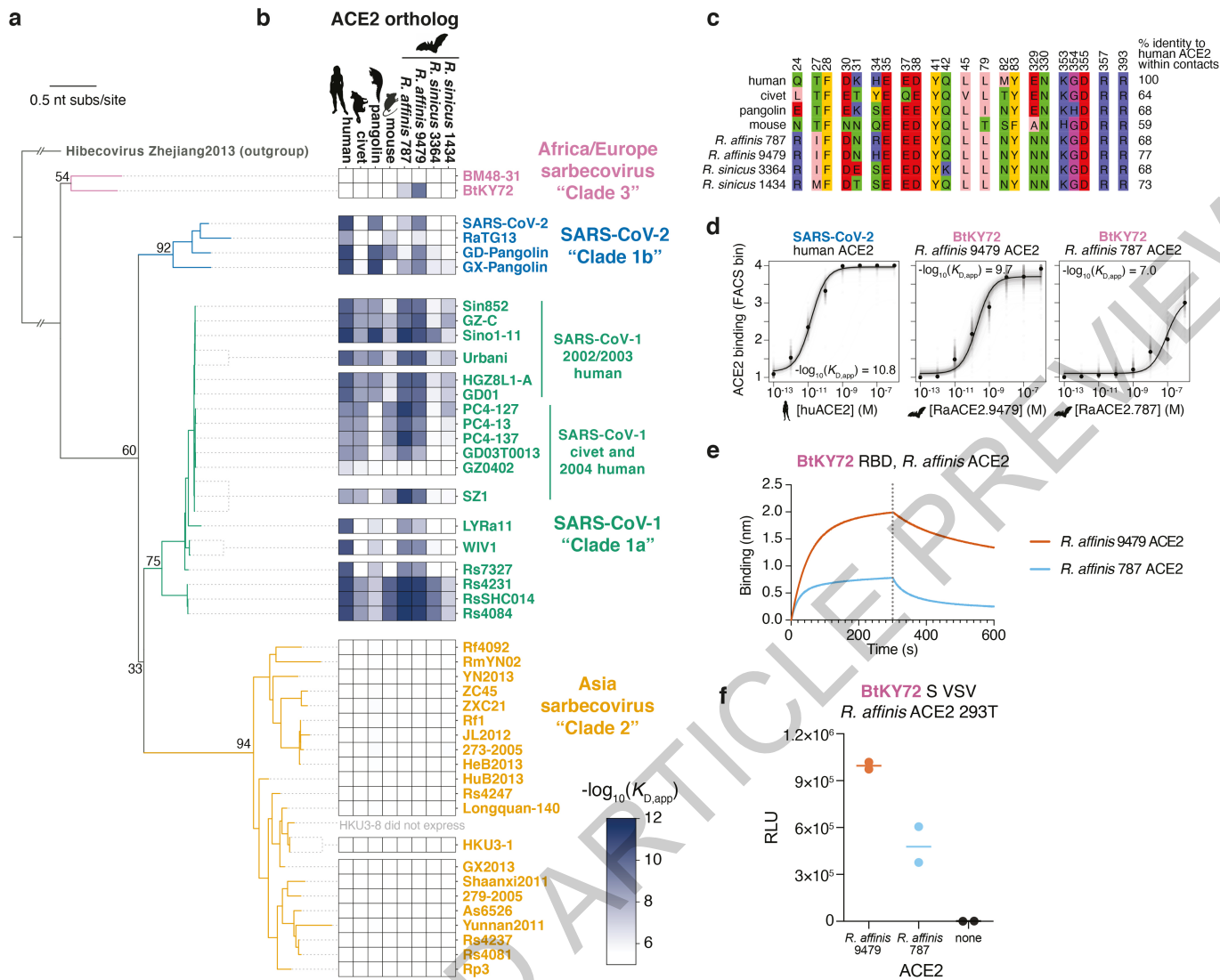


Fig. 1 | High-throughput survey of sarbecovirus ACE2 binding. **a**, Maximum likelihood phylogeny of sarbecovirus RBDs constructed from RBD nucleotide sequences. Node labels indicate bootstrap support values. Details on rooting in Extended Data Fig. 1. **b**, Binding avidities of sarbecovirus RBDs for eight ACE2 orthologs determined using high-throughput yeast-displayed RBD titration assays (Extended Data Fig. 2). Scale bar, bottom right. **c**, Alignment of tested ACE2 orthologs within RBD-contact positions (4Å cutoff in PDB 6MO) or 2AJF). **d**, Representative ACE2 binding curves from high-throughput titrations. Underlying titration curves for individual replicate-barcoded representatives of a genotype are shown in faint gray, and the average binding across all barcodes is indicated in black. **e**, Biolayer interferometry binding analysis of 1

μ M *R. affinis* ACE2-Fc to biotinylated BtKY72 RBD immobilized at the surface of streptavidin biosensors. Data representative of three assays using independent preparations of RBD (biological triplicate). See Extended Data Fig. 3a for robustness of result to ACE2-Fc concentration. **f**, Entry of VSV particles pseudotyped with the BtKY72 spike into HEK293T cells transiently expressing *R. affinis* ACE2 alleles 9479 or 787. Each point represents the mean of technical triplicates for assays performed with independent preparation of pseudoviral particles (biological duplicate). Geometric mean is indicated by horizontal line. Normalized pseudovirus western blot, and mock (VSV prepared without spike plasmid) pseudovirus entry in *R. affinis* ACE2 HEK293T cells are shown in Extended Data Fig. 3c, d.

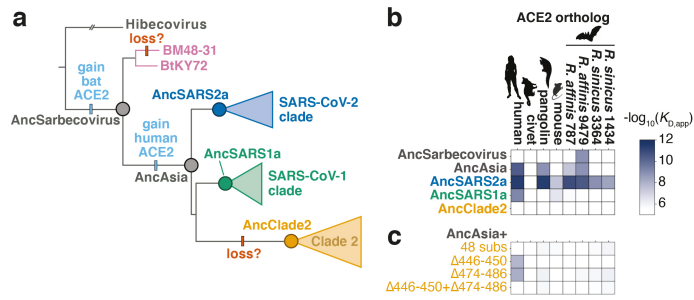


Fig. 2 | Ancestral origins of sarbecovirus ACE2 binding. a, Clade-collapsed RBD phylogeny. Circles represent nodes at which ancestral sequences were inferred. Bars indicate putative gains and losses in ACE2 binding. **b**, ACE2 binding of ancestrally reconstructed, yeast-displayed RBDs. Additional details in Extended Data Figs. 5, 6. **c**, ACE2 binding of AncAsia RBD plus introduction of the 48 substitutions or two sequence deletions that occurred on the phylogenetic branch leading to AncClade2 RBD.

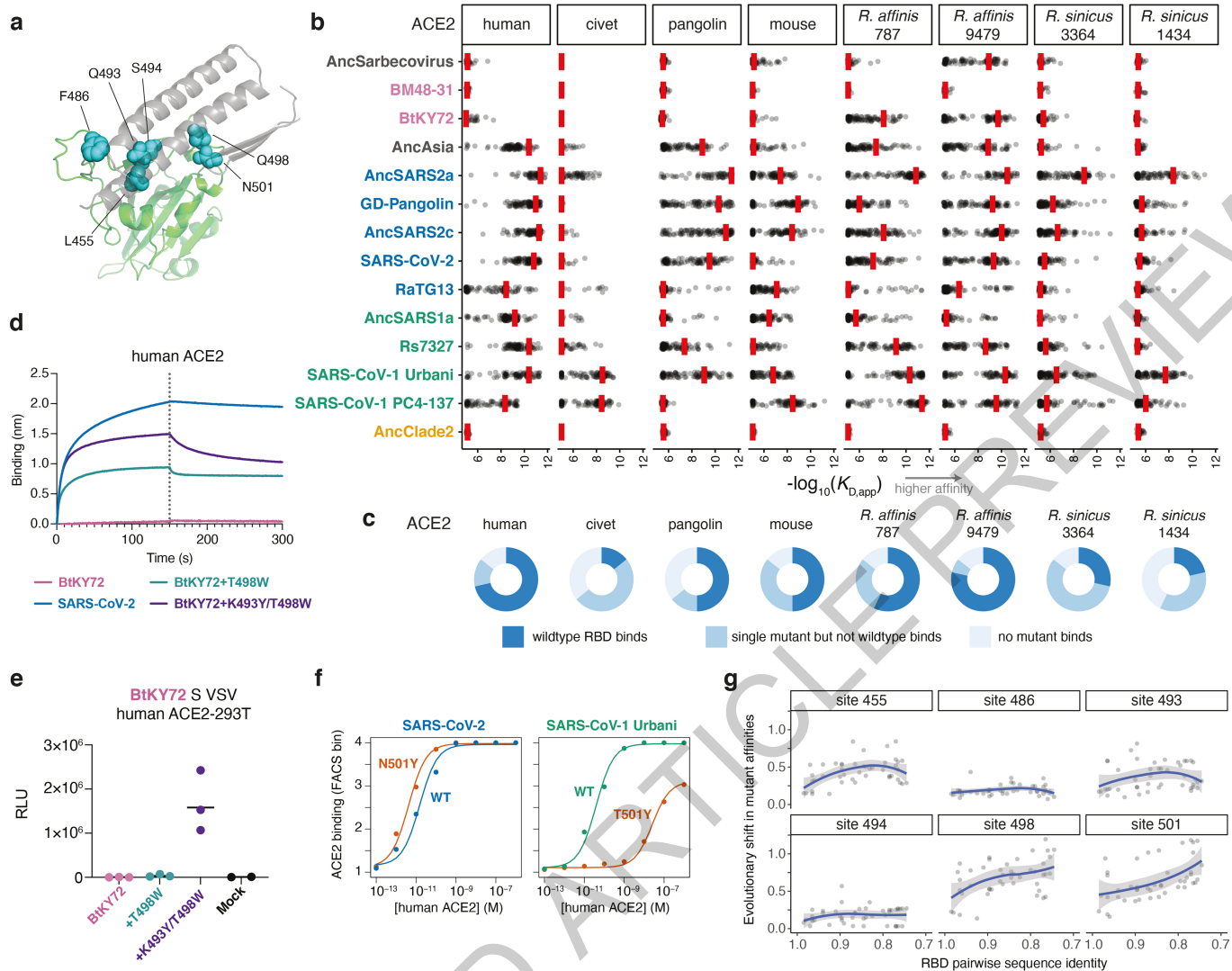


Fig. 3 | Evolutionary plasticity of ACE2 binding. **a**, Structural context of positions targeted for mutagenesis. Green cartoon, RBD; gray cartoon, ACE2 interaction motifs; blue spheres, residues targeted via mutagenesis (SARS-CoV-2 identities). **b**, Mutational scanning measurements. Red bars mark the binding avidity of the parental RBD, and points mark mutant avidities. See Extended Data Fig. 7 for mutation-level measurements. **c**, The fraction of the 14 RBD backgrounds for which the parental RBD binds the indicated ACE2 ortholog ($-\log_{10}(K_{D,app}) > 7$), a single mutant binds but the parental RBD does not, or no tested mutants bind. **d**, Binding of 1 μ M human ACE2-Fc to biotinylated RBDs immobilized at the surface of streptavidin biosensors. Data representative of three assays using independent preparations of RBD (biological triplicate). See Extended Data Fig. 3b for robustness to ACE2-Fc concentration. **e**, Entry of BtKY72 spike-pseudotyped VSV in HEK293T cells stably expressing human ACE2. Each point represents the mean of technical

triplicates in assays performed with independent preparation of pseudoviral particles (biological triplicate). Horizontal line, geometric mean. Mock, VSV particles produced in cells in which no spike gene was transfected. Western blot of pseudotyped particles in Extended Data Fig. 3c, and entry into 293T cells lacking ACE2 in Extended Data Fig. 3e. **f**, Titration curves illustrating the effect of mutation to tyrosine 501 (SARS-CoV-2 numbering) in SARS-CoV-2 and SARS-CoV-1 Urbani RBD backgrounds. **g**, Epistatic turnover in mutation effects. Each point represents, for a pair of RBDs, the mean absolute error (residual) in their correlated mutant avidities for human ACE2 (Extended Data Fig. 9a) versus their pairwise amino acid sequence identity. Correlations computed only for pairs where the parental RBDs bind with $-\log_{10}(K_{D,app}) > 7$. Blue line and shaded gray, LOESS mean and 95% CI trendline. See Extended Data Fig. 9b for analysis across all ACE2 orthologs.

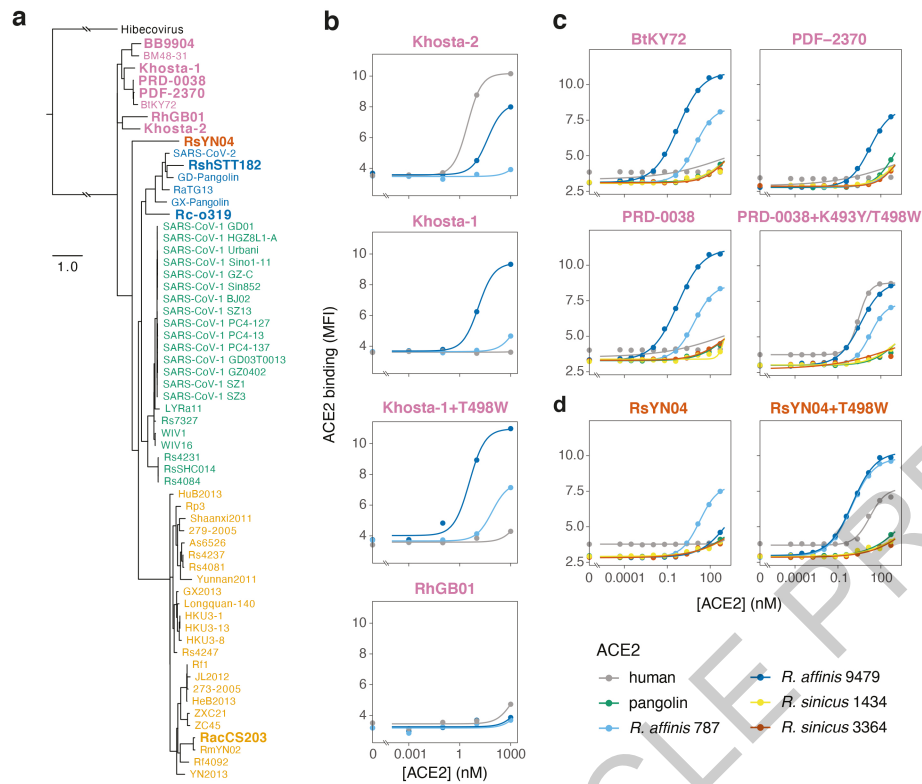


Fig. 4 | Newly sampled sarbecovirus lineages bind ACE2. a, Phylogenetic placement of newly described sarbecovirus RBDs. New sequences in bold letters. RBDs colored as in Fig. 1a. See Extended Data Fig. 10 for more details. **b-d**, Binding curves for newly described sarbecovirus RBDs from Europe

(b), Africa (c), and Asia (d), and candidate mutations that confer human ACE2 binding. Measurements performed with yeast-displayed RBDs and purified dimeric ACE2 proteins, measured by flow cytometry. Data from a single experimental replicate.

Methods

Phylogenetics and ancestral sequence reconstruction

All steps of bioinformatic analysis, including specific programmatic commands, alignments, raw data, and output files can be found on GitHub: https://github.com/jbloomlab/SARSr-CoV_homolog_survey/tree/master/RBD_ASR.

A panel of unique sarbecovirus RBD sequences was assembled incorporating the RBD sequences curated by Letko et al.⁷, all unique RBD sequences among SARS-CoV-1 human and civet strains reported by Song et al.³⁰, and recently reported sarbecoviruses BtKY72¹³, RaTG13², GD-Pangolin-CoV (consensus RBD sequence reported in Fig. 3a of Lam et al.²³) and GX-Pangolin-CoV²³ (P2V, ambiguous nucleotide in codon 515 (SARS-CoV-2 numbering) was resolved to retain amino acid F515, which is conserved across all other sarbecoviruses). We also incorporated newly described sarbecovirus sequences RsYN04¹⁵, PDF-2370 and PRD-0038¹⁹, Khosta-1 and Khosta-2³², RhGB01⁴⁷, RshSTT182²⁵, and Rc-o319²⁴ into updated phylogenies and functional work after the initiation of our study (Fig. 4 and Extended Data Fig. 10). The Hibecovirus sequence Hp-BetaCoV/Zhejiang2013 (Genbank: KF636752) was used to root the sarbecovirus phylogeny. For Extended Data Fig. 1 and 10a-d, additional betacoronavirus outgroups were included in rooting. All virus names, species and location of sampling, and sequence accessions or citations are provided on GitHub: https://github.com/jbloomlab/SARSr-CoV_homolog_survey/blob/master/RBD_ASR/RBD_accessions.csv. We thank all sequence contributors, including contributors to GISAID: https://github.com/jbloomlab/SARSr-CoV_homolog_survey/tree/master/RBD_ASR/gisaid.

Amino acid sequences were aligned by mafft (version 7.471)⁵¹ with a gap opening penalty of 4.5. RBD sequences were subsetted from spike alignments according to our domain boundary defined for SARS-CoV-2 (Wuhan-Hu-1 Genbank: MN908947, residues N331-T531). Nucleotide alignments were constructed from amino acid alignments using PAL2NAL (version 14)⁵². Phylogenies were inferred with RAxML (version 8.2.12)⁵³ using the LG+ Γ substitution model for amino acid sequence alignments or GTR+ Γ with separate data partitions applied to the first, second, and third codon positions for nucleotide sequence alignments. Constraint files specifying specific clade relationships (but free topologies within clades) were used to fix particular topologies in Extended Data Fig. 6a (alternate relationships between RBD Clades 1a, 1b, and 2) and Fig. 4a (monophyletic Europe and Africa RBD clade, see Extended Data Fig. 10a-d). RBD gene segments were used as our primary boundary for phylogenetic inference and ancestral sequence reconstruction due to the presence of frequent recombination within broader spike alignments^{19,20}.

Marginal likelihood ancestral sequence reconstruction was performed with FastML (version 3.11)⁵⁴ using the amino acid sequence alignment, the maximum likelihood nucleotide tree topology from RAxML, the LG+ Γ substitution matrix, re-optimization of branch lengths, and FastML's likelihood-based indel reconstruction model. The maximum *a posteriori* (MAP) ancestral sequences at nodes of interest were determined from the marginal reconstructions as the string of amino acids at each alignment site with the highest posterior probability, censored by deletions as inferred from the indel reconstruction. To test the robustness of ancestral phenotypes to statistical uncertainty in reconstructed ancestral states, we also constructed "alt" ancestors in which all second-most-probable states with posterior probability > 0.2 were introduced simultaneously³⁸.

To identify potential recombination breakpoints within the RBD alignment, we used GARD (version 0.2)⁵⁵, which identified a possible recombination breakpoint (Extended Data Fig. 6c) that produces two alignment segments exhibiting phylogenetic incongruence with a gain in overall likelihood sufficient to justify the duplication of phylogenetic parameters (Δ AIC = -85). To determine the impact of this possible recombination on ancestral sequence reconstructions, the

alignment was split into separate segments at the proposed breakpoint. Phylogenies were inferred and ancestral sequences reconstructed on separate segments as described above, and reconstructed ancestral sequences at matched nodes for each segment were concatenated, as shown in Extended Data Fig. 6e.

RBD library construction

Genes encoding all 73 unique extant and ancestral RBD amino acid sequences were ordered from Twist Bioscience, Genscript, and IDT. Gene sequences are provided on GitHub: https://github.com/jbloomlab/SARSr-CoV_homolog_survey/blob/master/RBD_ASR/parsed_sequences/RBD_sequence_set_annotated.csv. Genes were cloned in bulk into the pETcon yeast surface-display vector (plasmid 2649) as described by Starr et al.¹². As described in this prior publication, randomized N16 barcodes were appended via PCR downstream from RBD coding sequences. RBD sequences were pooled and barcoded in two independently processed replicates. The pooled, barcoded parental RBD libraries were electroporated into *E. coli* and plated at an estimated bottleneck of ~22,000 cfu, yielding an estimated ~300 barcodes per parental RBD within each library replicate.

In parallel, we cloned site saturation mutagenesis libraries of six positions in select RBD backgrounds. The positions targeted correspond to SARS-CoV-2 positions 455, 486, 493, 494, 498, and 501. The RBD-indexed position targeted in each background is provided on GitHub: https://github.com/jbloomlab/SARSr-CoV_homolog_survey/blob/master/RBD_ASR/parsed_sequences/RBD_sequence_set_annotated.csv. Precise site saturation mutagenesis pools were produced by Genscript, provided as plasmid libraries. Failed positions in the Genscript mutagenesis libraries (all six positions in SARS-CoV-1 Urbani, position 494 in SARS-CoV-2, and position 455 in RaTG13 and GD-Pangolin) or backgrounds chosen for mutagenesis subsequent to initial library design (BtKY72) were produced in-house via PCR-based mutagenesis using NNS degenerate mutagenic primers followed by Gibson Assembly of mutagenized fragments. In duplicate, mutant libraries were pooled and N16 barcodes were appended downstream from the RBD coding sequence. The pooled, barcoded mutant libraries were electroporated into *E. coli* and plated at a target bottleneck corresponding to an average of 20 barcodes per mutant within each library replicate.

Colonies from bottlenecked transformation plates were scraped and plasmid purified. Parental RBD and mutant pools were combined at ratios corresponding to expected barcode diversity, yielding the two separately barcoded library replicates used in high-throughput experiments. Plasmid libraries were transformed into yeast (AWY101 strain⁵⁶) according to the protocol of Gietz and Schiestl⁵⁷, transforming 10 μ g of plasmid at 10 \times scale.

PacBio sequencing and analysis

As described by Starr et al.¹², PacBio sequencing was used to acquire long sequence reads spanning the N16 barcode and RBD coding sequence. PacBio sequencing constructs were prepared from library plasmid pools via NotI digestion and gel purification, followed by SMRTbell ligation. Each library was sequenced across three SMRT Cells on a PacBio Sequel using 20-hour movie collection times. PacBio circular consensus sequences (CCSs) were generated from subreads using the ccs program (version 5.0.0), requiring 99.9% accuracy and a minimum of 3 passes. The resulting CCSs are available on the NCBI Sequence Read Archive, BioSample SAMN18316101.

CCSs were processed using alignparse (version 0.1.6)⁵⁸ to identify the RBD target sequence, call any mutations, and determine the associated N16 barcode sequence, requiring no more than 18 nucleotide mutations from the intended target sequence, an expected 16-nt length barcode sequence, and no more than 3 mismatches across the sequenced portions of the vector backbone.

We next used processed CCSs to link each barcode to the associated RBD sequence. We first filtered sequences with ccs-determined

Article

accuracies of <99.99% or indels. The empirical sequencing accuracy estimated by comparing RBD variants associated with barcode sequences sampled across multiple CCSs (https://jbloomlab.github.io/alignparse/alignparse.consensus.html#alignparse.consensus.empirical_accuracy) was 99.0% and 98.4% in libraries 1 and 2, respectively. For barcodes sampled across multiple CCSs, we derived consensus RBD variant sequences, discarding barcodes where CCSs with identical barcodes exhibited >1 point mutation or >2 indels, or where >10% or >25% of CCSs with an identical barcode contain a secondary non-consensus mutation or indel, respectively. The CCS processing pipeline is available on GitHub: https://github.com/jbloomlab/SARSr-CoV_homolog_survey/blob/master/results/summary/process_ccs.md. The final barcode-variant lookup table, which links each NI6 barcode with its associated RBD sequence, is available on GitHub: https://github.com/jbloomlab/SARSr-CoV_homolog_survey/blob/master/results/variants/nucleotide_variant_table.csv.

ACE2 proteins for yeast-display assays

Recombinant dimeric ACE2 proteins for yeast-display binding assays were purchased or produced from commercial sources. Recombinant human ACE2 (Uniprot: Q9BYF1-1) was purchased from ACROBiosystems (AC2-H82E6), consisting of residues 18-740 spanning an intrinsic dimerization domain, followed by a His tag and biotinylated Avitag used for downstream detection. Civet (*Paguma larvata*) ACE2 (Uniprot: Q56NLI-1) was purchased from ACROBiosystems (AC2-P5248), consisting of residues 18-740 spanning an intrinsic dimerization domain, with an N-terminal His tag used for downstream detection. Mouse (*Mus musculus*) ACE2 (Uniprot: Q8R0I0-1) was purchased from Sino Biological (S0249-M03H), consisting of residues 18-740 spanning an intrinsic dimerization domain, followed by a His tag and human IgG1 Fc domain used for downstream detection.

The remaining ACE2s for yeast-display binding assays (with the exception of Extended Data Fig. 4) were produced by Genscript. Specifically, pangolin (*Manis javanica*, Genbank: XP_017505746.1), *R. affinis* 787 (Genbank: QMQ39222), *R. affinis* 9479 (Genbank: QMQ39227), *R. sinicus* 3364 (Genbank: QMQ39219), and *R. sinicus* 1434 (Genbank: QMQ39216) ACE2 residues 19-615 were cloned with a C-terminal human IgG1 Fc domain for dimerization and downstream detection. pcDNA3.4 expression plasmids were transfected into HD 293F cells for protein expression. ACE2-Fc fusions were purified from day six culture supernatants via Fc-tag affinity purification.

Library measurements of RBD expression and RBD+ enrichment

Transformed yeast library aliquots were grown overnight in a shaker at 30 °C in SD-CAA media (6.7 g/L Yeast Nitrogen Base, 5.0 g/L Casamino acids, 2.13 g/L MES, and 2% w/v dextrose, pH 5.3). To induce RBD expression, yeast were washed and resuspended in SG-CAA+0.1%D media (6.7 g/L Yeast Nitrogen Base, 5.0 g/L Casamino acids, 2.13 g/L MES, 2% w/v galactose, and 0.1% w/v dextrose, pH 5.3) at initial OD₆₀₀ 0.67, and incubated at room temperature for 16-18 hr with mild agitation.

For each library, 45 OD of induced culture was washed twice with PBS-BSA (0.2 mg/mL), and RBD surface expression was labeled via a C-terminal c-Myc tag with 1:100 diluted FITC-conjugated chicken anti-c-Myc antibody (Immunology Consultants Lab, CMYC-45F) in 3mL PBS-BSA. Labeled cells were washed twice in PBS-BSA, and resuspended in PBS for FACS.

Yeast library sorting experiments were conducted on a BD FACSAria II with FACSDiva software (version 8.0.2). For high-throughput measurements of RBD expression levels, cells were gated for single cells (Extended Data Fig. 2b), and partitioned into four bins of FITC fluorescence (Extended Data Fig. 2c), where bin 1 captures 99% of unstained cells, and bins 2-4 split the remaining library population into tertiles. Cells were sorted into 5mL tubes pre-wet with 1mL of SD-CAA with 1% BSA. We recovered ~8 million cells per library across the four bins. Sorted cells were resuspended to 2e6 cells/mL in fresh SD-CAA with

1:100 penicillin-streptomycin, and grown overnight at 30 °C. Plasmid was purified from post-sort yeast samples of <4e7 cells per miniprep column using the Zymo Yeast Miniprep II kit (D2004) according to manufacturer instructions, with the addition of an extended (>2 hr) Zymolyase treatment and a -80 °C freeze/thaw cycle prior to cell lysis. NI6 barcodes were PCR amplified from each plasmid aliquot as described in Starr et al.¹² and submitted for Illumina HiSeq 50bp single end sequencing.

To enrich properly expressing RBD variants for downstream titration experiments, we also sorted ~2e7 cells per library using the RBD+ (FITC+) bin shown in Extended Data Fig. 2b). RBD+-enriched populations were resuspended to 1e6 cells/mL for overnight outgrowth, and frozen -80 °C in 9 OD aliquots for subsequent titration experiments.

A pool of mutants that were added after the first set of experiments (mutations at position 455 in RaTG13 and GD-Pangolin, and mutations at all six positions in BtKY72) were not RBD+ enriched and were not part of the bulk expression Sort-seq measurement, but were pooled with the RBD+-enriched population of the primary libraries for subsequent titration assays.

Library measurements of ACE2 binding affinities

For high-throughput measurements of ACE2 binding affinities, yeast libraries were induced for RBD expression as described above. Induced cultures were aliquoted at 8 OD per titration sample and washed twice with PBS-BSA. Cells were resuspended across a range of ACE2 concentrations from 1e-6 to 1e-13 M in 1 M intervals, plus a 0 M ACE2 concentration. Samples were incubated overnight at room temperature with mild agitation. Samples were washed twice in ice-cold PBS-BSA, and resuspended in 1mL secondary label (1:100 Myc-FITC, and 1:200 PE-conjugated streptavidin (Thermo Fisher S866) for human ACE2, 1:200 iFluor647-conjugated mouse anti-His (Genscript AO1802) for civet ACE2, and 1:200 PE-conjugated goat anti-human IgG (Jackson ImmunoResearch Labs 109-115-098) for all other Fc-tagged ACE2 ligands), and incubated for 1 hour on ice. Cells were washed twice with PBS-BSA and resuspended in PBS for FACS.

Titration samples were binned for single, RBD-expressing cells (Extended Data Fig. 2b), which were then partitioned into four bins on the basis of ACE2 binding (Extended Data Fig. 2d). At each concentration, a minimum of 5e6 cells were collected across the four bins. Sorted cells were resuspended in 1mL SD-CAA with 1:100 penicillin-streptomycin, and grown overnight at 30 °C in deep well plates. Plasmid aliquots from each population were purified with the Zymo Yeast 96-Well Miniprep kit (D2005) according to manufacturer instructions, with the addition of an extended (>2 hr) Zymolyase treatment and a -80 °C freeze/thaw cycle prior to cell lysis. NI6 barcodes were PCR amplified from each plasmid aliquot as described in Starr et al.¹² and submitted for Illumina HiSeq 50bp single end sequencing.

For the pool of mutants that were added after the first set of experiments (mutations at position 455 in RaTG13 and GD-Pangolin, and mutations at all six positions in BtKY72), duplicate titrations were already conducted with the primary pool for human ACE2 and *R. affinis* 787 ACE2. Titrations with this smaller library sub-pool with these ACE2 ligands were conducted as above, but scaled to 1.6 OD per sample, collecting >1 million cells per concentration.

Illumina barcode sequencing analysis

Demultiplexed sequence reads (available on the NCBI Sequence Read Archive, BioSample SAMN20174027) were aligned to library barcodes as determined from PacBio sequencing using dms_variants (version 0.8.5), yielding a count of the number of times each barcode was sequenced within each FACS bin. Read counts within each FACS bin were downweighted by the ratio of total reads from a bin compared to the number of cells that were actually sorted into that bin. The table giving downweighted counts of each barcode in each FACS bin is available on GitHub: https://github.com/jbloomlab/SARSr-CoV_homolog_survey/blob/master/results/counts/variant_counts.csv.

We estimated the RBD expression level of each barcoded variant based on its distribution of counts across FACS bins and the known log-transformed fluorescence boundaries of each sort bin using a maximum likelihood approach^{12,59}, implemented with the `fitdistrplus` package (version 1.0.14)⁶⁰ in R. Expression measurements were retained for barcodes for which greater than 20 counts were observed across the four FACS bins. The full pipeline for computing per-barcode expression values is described on GitHub: https://github.com/jbloomlab/SARSr-CoV_homolog_survey/blob/master/results/summary/compute_expression_meanF.md.

We estimated the level of ACE2 binding of each barcoded variant at each titration concentration based on its distribution of counts across FACS bins calculated as a simple mean⁵⁹, as described in Starr et al.¹². We determined the apparent binding constant $K_{D,app}$ describing the affinity of each barcoded variant for each ACE2 along with free parameters a (titration response range) and b (titration curve baseline) via nonlinear least-squares regression using the standard non-cooperative Hill equation relating the mean bin response variable to the ACE2 labeling concentration:

$$\text{bin} = a \times [\text{ACE2}] / ([\text{ACE2}] + K_{D,app}) + b$$

The measured mean bin value at a given ACE2 concentration was excluded from a variant's curve fit if fewer than 10 counts were observed across the four FACS bins at that concentration. Individual concentration points were also excluded from the curve fit if they demonstrated evidence of bimodality (>40% of counts of a barcode were found in each of two non-consecutive bins 1+3 or 2+4, or >20% of counts of a barcode were found in each of the boundary bins 1+4). To avoid errant fits, we constrained the fit baseline parameter b to be between 1 and 1.5, the response parameter a to be between 2 and 3, and the $K_{D,app}$ parameter to be between $1e-15$ and $1e-5$. The fit for a barcoded variant was discarded if the average count across all sample concentrations was below 10, or if >20% of sample concentrations were missing due to counts below 10. We also discarded curve fits where the normalized mean square residual (residuals normalized from 0 to 1 relative to the fit response parameter a) is >10× the median normalized mean square residual across all titrations with all ACE2s. $K_{D,app}$ binding constants were expressed as $-\log_{10}(K_{D,app})$, where higher values indicate higher affinity binding. The full pipeline for computing per-barcode binding affinities is described on GitHub: https://github.com/jbloomlab/SARSr-CoV_homolog_survey/blob/master/results/summary/compute_binding_Kd.md.

To derive our final measurements we collapsed measurements across internally replicated barcodes representing each RBD genotype. For each RBD genotype, we discarded the top and bottom 5% (expression measurements) or 2.5% (titration affinities) of per-barcode measurements, and computed the mean value across remaining barcodes within each library. The correlations in these barcode-averaged measurements between independently barcoded and assayed library replicates are shown in Extended Data Fig. 2g. Final measurements were determined as the mean of the barcode-collapsed mean measurements from each replicate. The total number of barcodes collapsed into these final measurements from both replicates are shown in the histograms in Extended Data Fig. 2f. Final measurements for an RBD genotype were discarded if the RBD genotype was not sampled with at least one non-filtered barcode in each replicate, or sampled with at least five non-filtered barcodes in a single replicate. The full pipeline for barcode collapsing is described on GitHub: https://github.com/jbloomlab/SARSr-CoV_homolog_survey/blob/master/results/summary/barcode_to_genotype_phenotypes.md. The final processed measurements of expression and ACE2 binding for parental and mutant RBDs can be found on GitHub: https://github.com/jbloomlab/SARSr-CoV_homolog_survey/blob/master/results/final_variant_scores/wt_variant_scores.csv and https://github.com/jbloomlab/SARSr-CoV_homolog_survey/blob/master/results/final_variant_scores/mut_variant_scores.csv.

Isogenic ACE2 binding assays

For RBDs assayed subsequent to library experiments (Fig. 4 and Extended Data Fig. 4, 6f, 10e), RBDs were cloned as isogenic stocks into the 2649 plasmid, sequence verified, and transformed individually into yeast using the LiAc/ssDNA transformation method⁶¹. Cultures were induced for RBD expression and labeled across ACE2 concentration series as described above, in V-bottom 96-well plates with 0.067 OD yeast per well. ACE2 labeling of RBD+ cells was measured on a BD LSRFortessa X50 flow cytometer and data was processed via FlowJo (version 10). Binding curves of PE (ACE2) mean fluorescence intensity versus ACE2 labeling concentration was fit as above, with the inclusion of a hill coefficient slope parameter n .

Transient expression of *R. affinis* and *R. sinicus* ACE2-Fc

The *R. affinis* 787 (GenBank: QMQ39222.1), *R. affinis* 9479 (GenBank: QMQ39227.1), *R. sinicus* 1446 (GenBank: QMQ39213.1), *R. sinicus* WJ1 (GenBank: QMQ39206.1), *R. sinicus* GQ262791 (GenBank: ACT66275.1), *R. sinicus* 3364 (GenBank: QMQ39219.1), *R. sinicus* WJ4 (GenBank: QMQ39200.1), *R. sinicus* 1438 (GenBank: QMQ39203.1), *R. sinicus* 1434 (GenBank: QMQ39216.1), and *R. sinicus* 3358 (GenBank: QMQ39212.1) ACE2 ectodomains constructs were synthesized by GenScript and placed into a pCMV plasmid. The domain boundaries for the ectodomain are residues 19-615. The native signal tag was identified using SignalP-5.0 (residues 1-18) and replaced with a N-terminal mu-phosphatase signal peptide. These constructs were then fused to a sequence encoding thrombin cleavage site and a human Fc fragment at the C-terminus. All ACE2-Fc constructs were produced in Expi293F cells (Thermo Fisher A14527) in Gibco Expi293 Expression Medium at 37 °C in a humidified 8% CO₂ incubator rotating at 130 rpm. The cultures were transfected using PEI-25K (Polysciences) with cells grown to a density of 3 million cells per mL and cultivated for 4-5 days. Proteins were purified from clarified supernatants using a 1 mL HiTrap Protein A HP affinity column (Cytiva), concentrated and flash frozen in 1x PBS, pH 7.4 (10 mM Na₂HPO₄, 1.8 mM KH₂PO₄, 2.7 mM KCl, 137 mM NaCl). Cell lines were not authenticated or tested for mycoplasma contamination.

Transient expression of BtKY72 parental and mutant RBDs

BtKY72 RBD construct (BtKY72 S residues 318-520) was synthesized by GenScript into a CMVR plasmid with a N-terminal mu-phosphatase signal peptide and a C-terminal hexa-histidine tag (-HHHHHHHH) joined by a short linker (-GGSS) to a Avi tag (-GLNDIFEAQKIEWHE). BtKY72 mutant constructs T498W (BtKY72 S residue 487) and K493Y/T498W (BtKY72 S residue 482/487) were subcloned by GenScript from the BtKY72 RBD construct. BtKY72 and BtKY72 mutant RBD constructs were produced in Expi293F cells in Gibco Expi293 Expression Medium at 37 °C in a humidified 8% CO₂ incubator rotating at 130 rpm. The cultures were transfected using PEI-25K with cells grown to a density of 3 million cells per mL and cultivated for 3-5 days. Proteins were purified from clarified supernatants using a 1 mL HisTrap HP affinity column (Cytiva), concentrated, and then biotinylated with a commercial BirA kit (Avidity). Proteins were then purified from the BirA enzyme by affinity purification using a 1 mL HisTrap HP affinity column (Cytiva), concentrated, and flash frozen in 1x PBS, pH 7.4. Cell lines were not authenticated or tested for mycoplasma contamination.

Biolayer interferometry

Assays were performed on an Octet Red (Forte Bio) instrument at 30 °C with shaking at 1,000 RPM. Streptavidin biosensors were hydrated in water for 10 min prior to a 60 s incubation in 10x Kinetics Buffer (undiluted). Biotinylated RBDs were loaded at 5-10 µg/mL in 10s Kinetics Buffer for 100-600 s prior to baseline equilibration for 120 s in 10x kinetics buffer. Association of ACE2-Fc (dimeric) was performed at 1 µM in 10x Kinetics Buffer. The data were baseline subtracted. The experiments were done with three separate purification batches of BtKY72

Article

RBDs. All RBDs were immobilized to identical levels, i.e. 1 nm shift. The data were plotted in Graph Prism and a representative plot is shown.

Generation of VSV pseudovirus

The BtKY72 S construct was synthesized by GenScript and cloned into an HDM plasmid with a C-terminal 3X FLAG tag. The BtKY72 mutant S constructs T498W (BtKY72 S residue 487) and K493Y/T498W (BtKY72 S residue 482/487) were subcloned by GenScript from the BtKY72 S construct. Pseudotyped VSV particles were prepared using HEK293T (293T) (ATCC CRL-11268) cells seeded into 10-cm dishes. 293T cells were transfected using Lipofectamine 2000 (Life Technologies) with a S encoding plasmid in Opti-MEM transfection medium and incubated for 5 hr at 37 °C with 8% CO₂, supplemented with DMEM containing 10% FBS. One day post-transfection, cells were infected with VSV (G*ΔG-luciferase), and after 2 hr, infected cells were washed 5x with DMEM before adding medium supplemented with anti-VSV G antibody (1I-mouse hybridoma supernatant diluted 1:40, from ATCC CRL-2700). Pseudotyped particles were harvested 18-24 hr post-inoculation, clarified from cellular debris by centrifugation at 3000 g for 10 min, concentrated 100x using a 100 MWCO membrane for 10 min at 3000 rpm, and frozen at -80 °C. Mock pseudotyped VSV pseudovirus was generated as above but in the absence of S. Cell lines were not authenticated or tested for mycoplasma contamination.

VSV pseudovirus entry assays

HEK293T (293T) cells (ATCC CRL-11268) and 293T cells with stable transfection of human ACE2⁶² were cultured in 10% FBS, 1% PenStrep DMEM at 37 °C in a humidified 8% CO₂ incubator. Cells were plated into poly-lysine coated 96-well plates. For *R. affinis* ACE2 entry, transient transfection of *R. affinis* ACE2 in 293T cells was done 36-48 hours prior to infection using Lipofectamine 2000 (Life Technologies) and an HDM plasmid containing full length *R. affinis* ACE2 (synthesized by GenScript) in OPTIMEM. After 5 hr incubation at 37 °C in a humidified 8% CO₂ incubator, DMEM with 10% FBS was added and cells were incubated at 37 °C in a humidified 8% CO₂ incubator for 36-48 hr. Cell lines were not authenticated or tested for mycoplasma contamination.

Immediately prior to infection, 293T cells with stable expression of human ACE2, transient expression of *R. affinis* ACE2 or not transduced to express ACE2 were washed with DMEM 1x, then plated with normalized pseudovirus in DMEM. Infection in DMEM was done with cells between 60-80% confluence (human ACE2 293T) or between 80-90% confluence (*R. affinis* ACE2 293T) for 2.5 hr prior to adding FBS and PenStrep to final concentrations of 10% and 1%, respectively. Following 24 hr of infection, One-Glo-EX (Promega) was added to the cells and incubated in the dark for 5 min before reading on a Synergy H1 Hybrid Multi-Mode plate reader (Biotek). Normalized cell entry levels of pseudovirus generated on different days (biological replicates) were plotted in Graph Prism as individual points, and average cell entry across biological replicates was calculated as the geometric mean.

BtKY72 S parental and mutant pseudoviral particle inputs for the above cell entry assays were normalized by spike incorporation quantified via western blot. Detection of S was done with mouse monoclonal ANTI-FLAG M2 antibody (Sigma F3165) and Alexa Fluor 680 AffiniPure Goat Anti-Mouse IgG, light chain specific (Jackson ImmunoResearch Labs 115-625-174). Detection of the VSV backbone was done with Anti-VSV-M [23H12] Antibody (Kerafast EB0011) and Alexa Fluor 680 AffiniPure Goat Anti-Mouse IgG, light chain specific (Jackson ImmunoResearch Labs 115-625-174). A representative blot is shown in Extended Data Fig. 3c. Expression of the *R. affinis* ACE2 alleles was not quantified or normalized.

Biosafety considerations

We characterize the human ACE2 binding of sarbecovirus RBDs and identify point mutants that increase the affinity of some RBDs. This work includes identifying sarbecovirus RBDs from outside southeast

Asia that can naturally bind human ACE2 (Khosta-2 RBD from Russia) or adapt to bind human ACE2 with just a few mutations (BtKY72 RBD from Kenya). We verify this latter finding using non-replicative spike-pseudotyped VSV particles. None of our experiments pose a biosafety risk, since they only involve RBD protein (purified or expressed in yeast) or non-replicative pseudotyped VSV viral particles, and not “live virus.” However, it is possible that another researcher could perform experiments on actual sarbecoviruses with RBDs like the ones we describe, and such experiments could pose a risk. Against that possible information misuse, we weigh the following benefits of the information conveyed by our study: (i) as stated in the concluding paragraph of the Discussion, we use safe methods to highlight the need for care when sampling sarbecoviruses including those from outside southeast Asia; (ii) we identify a broader swath of spike proteins that should be included in biochemical studies to engineer countermeasures (e.g., broad antibodies^{63,64} or stabilized spike immunogens); (iii) we characterize mutations that could enable safer mouse-adapted lab strains with reduced human ACE2 affinity (Extended Data Figure 8c); (iv) we provide data that can improve sequence-based phenotypic predictions. We emphasize that our work indicates that “live virus” experiments with any novel sarbecovirus should involve careful consideration of risks, since human ACE2 binding may be widespread. The actual capability of a sarbecovirus to infect humans will depend not only on its ACE2 affinity, but also other properties including proteolytic activation of the spike⁶⁵, innate immunity, and other poorly understood factors.

Reporting summary

Further information on research design is available in the Nature Research Reporting Summary linked to this paper.

Data availability

PacBio circular consensus sequences are available from the NCBI SRA, BioSample SAMN18316101. Illumina sequences for barcode counting are available from the NCBI SRA, BioSample SAMN20174027. Table of measurements of ACE2 binding and expression for all parental RBDs is available on GitHub: https://github.com/jbloomlab/SARSr-CoV_homolog_survey/blob/master/results/final_variant_scores/wt_variant_scores.csv. Table of measurements of ACE2 binding and expression for all single mutant RBDs is available on GitHub: https://github.com/jbloomlab/SARSr-CoV_homolog_survey/blob/master/results/final_variant_scores/mut_variant_scores.csv. For bioinformatic analyses, all virus names, species and location of sampling, and sequence accessions (NCBI GenBank or GISAID) or citations are tabulated on GitHub: https://github.com/jbloomlab/SARSr-CoV_homolog_survey/blob/master/RBD_ASR/RBD_accessions.csv

Code availability

All code for data analysis is available on GitHub: https://github.com/jbloomlab/SARSr-CoV_homolog_survey. A summary of the computational pipeline and links to individual notebooks detailing steps of analysis is available on GitHub: https://github.com/jbloomlab/SARSr-CoV_homolog_survey/blob/master/results/summary/summary.md

51. Katoh, K. & Standley, D. M. MAFFT multiple sequence alignment software version 7: improvements in performance and usability. *Mol. Biol. Evol.* **30**, 772–780 (2013).
52. Suyama, M., Torrents, D. & Bork, P. PAL2NAL: robust conversion of protein sequence alignments into the corresponding codon alignments. *Nucleic Acids Res.* **34**, W609–12 (2006).
53. Stamatakis, A. RAxML version 8: a tool for phylogenetic analysis and post-analysis of large phylogenies. *Bioinformatics* **30**, 1312–1313 (2014).
54. Ashkenazy, H. et al. FastML: a web server for probabilistic reconstruction of ancestral sequences. *Nucleic Acids Res.* **40**, W580–4 (2012).
55. Kosakovsky Pond, S. L., Posada, D., Gravenor, M. B., Woelk, C. H. & Frost, S. D. W. Automated phylogenetic detection of recombination using a genetic algorithm. *Mol. Biol. Evol.* **23**, 1891–1901 (2006).

56. Wentz, A. E. & Shusta, E. V. A novel high-throughput screen reveals yeast genes that increase secretion of heterologous proteins. *Appl. Environ. Microbiol.* **73**, 1189–1198 (2007).
57. Gietz, R. D. & Schiestl, R. H. Large-scale high-efficiency yeast transformation using the LiAc/SS carrier DNA/PEG method. *Nat. Protoc.* **2**, 38–41 (2007).
58. Crawford, K. H. D. & Bloom, J. D. alignparse: A Python package for parsing complex features from high-throughput long-read sequencing. *J Open Source Softw* **4**, 1915 (2019).
59. Peterman, N. & Levine, E. Sort-seq under the hood: implications of design choices on large-scale characterization of sequence-function relations. *BMC Genomics* **17**, 206 (2016).
60. Delignette-Muller, M. & Dutang, C. fitdistrplus: An R Package for Fitting Distributions. *Journal of Statistical Software, Articles* **64**, 1–34 (2015).
61. Gietz, R. D. & Schiestl, R. H. High-efficiency yeast transformation using the LiAc/SS carrier DNA/PEG method. *Nat. Protoc.* **2**, 31–34 (2007).
62. Crawford, K. H. D. et al. Protocol and Reagents for Pseudotyping Lentiviral Particles with SARS-CoV-2 Spike Protein for Neutralization Assays. *Viruses* **12**, 513 (2020).
63. Starr, T. N. et al. SARS-CoV-2 RBD antibodies that maximize breadth and resistance to escape. *Nature* **597**, 97–102, <https://doi.org/10.1038/s41586-021-03807-6> (2021).
64. Tortorici, M. A. et al. Broad sarbecovirus neutralization by a human monoclonal antibody. *Nature* **597**, 103–108 (2021).
65. Johnson, B. A. et al. Loss of furin cleavage site attenuates SARS-CoV-2 pathogenesis. *Nature* **591**, 293–299 (2021).
66. Adams, R. M., Mora, T., Walczak, A. M. & Kinney, J. B. Measuring the sequence-affinity landscape of antibodies with massively parallel titration curves. *Elife* **5**, e23156 (2016).
67. Frieman, M. et al. Molecular determinants of severe acute respiratory syndrome coronavirus pathogenesis and virulence in young and aged mouse models of human disease. *J. Virol.* **86**, 884–897 (2012).
68. Gu, H. et al. Adaptation of SARS-CoV-2 in BALB/c mice for testing vaccine efficacy. *Science* **369**, 1603–1607 (2020).
69. Huang, K. et al. Q493K and Q498H substitutions in Spike promote adaptation of SARS-CoV-2 in mice. *EBioMedicine* **67**, 103381 (2021).
70. Montagutelli, X. et al. The B1.351 and P.1 variants extend SARS-CoV-2 host range to mice. *bioRxiv* 2021.03.18.436013 <https://doi.org/10.1101/2021.03.18.436013> (2021).

Acknowledgements We thank the Fred Hutch Flow Cytometry and Genomics facilities and the Scientific Computing group supported by ORIP grant S100D028685. We thank Dr. Shi Zhengli (Wuhan Institute of Virology) for sharing *R. sinicus* and *R. affinis* ACE2 sequences from a preprint prior to formal publication. We thank Hideki Tani (University of Toyama) for providing the reagents necessary for preparing VSV pseudotyped viruses. We thank Stephen Goldstein and Alina Chan for helpful discussions. This study was supported by the National Institute of Allergy and Infectious Diseases (DP1AI158186 and HHSN272201700059C to DV, and R01AI141707 to JDB), the National Institute of General Medical Sciences (R01GM120553 to DV and 5T32GM008268-32 to SKZ) a Pew Biomedical Scholars Award (DV), Investigators in the Pathogenesis of Infectious Disease Awards from the Burroughs Wellcome Fund (DV and JDB), Fast Grants (DV), the Bill & Melinda Gates Foundation (OPP1156262 to DV and INV-004949 to JDB), and the Russian Foundation for Basic Research (20-04-60154 “An analysis of genetic diversity of zoonotic viruses in Russian populations of bats and rodents” to SA). TNS is an HHMI Fellow of the Damon Runyon Cancer Research Foundation. DV and JDB are investigators of the Howard Hughes Medical Institute.

Author contributions Conceptualization: TNS, SKZ, DV, JDB. Phylogenetics: TNS. Yeast-display methodology: TNS, AJG. Yeast-display experiments: TNS. BLI measurements: SKZ. Pseudovirus entry assays: SKZ, ACW. Data analysis: TNS. Khosta-1 and -2 sampling and sequencing: SA. Supervision: DV, JDB. Writing – original draft: TNS, SKZ, DV, JDB. Writing – review and editing: all authors

Competing interests JDB consults for Moderna on viral evolution and epidemiology and Flagship Labs 77 on deep mutational scanning. JDB may receive a share of IP revenue as an inventor on a Fred Hutchinson Cancer Research Center-licensed technology/patent (application WO2020006494) related to deep mutational scanning of viral proteins. The Veesler laboratory has received an unrelated sponsored research agreement from Vir Biotechnology Inc.

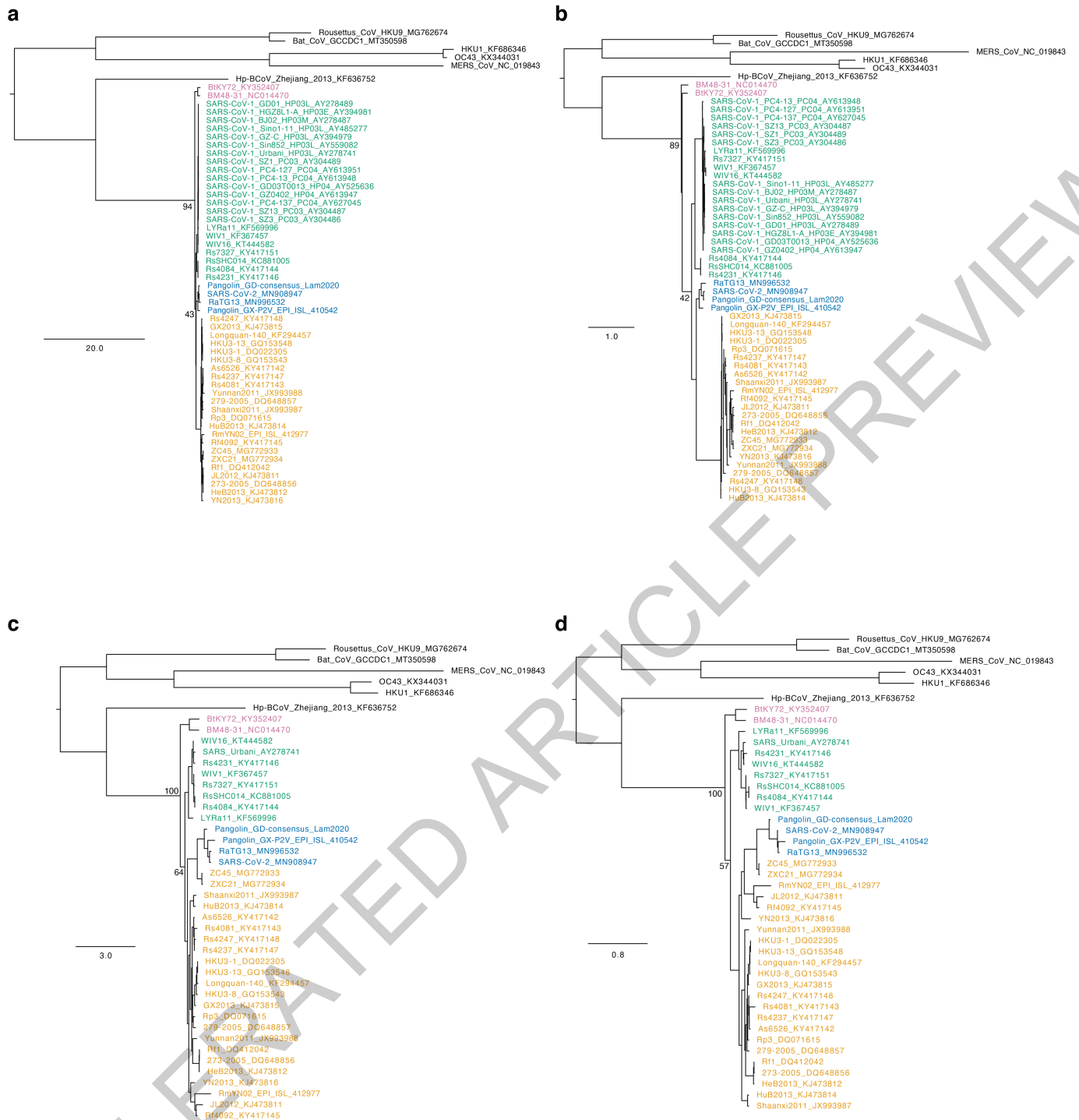
Additional information

Supplementary information The online version contains supplementary material available at <https://doi.org/10.1038/s41586-022-04464-z>.

Correspondence and requests for materials should be addressed to Tyler N. Starr, David Velesler or Jesse D. Bloom.

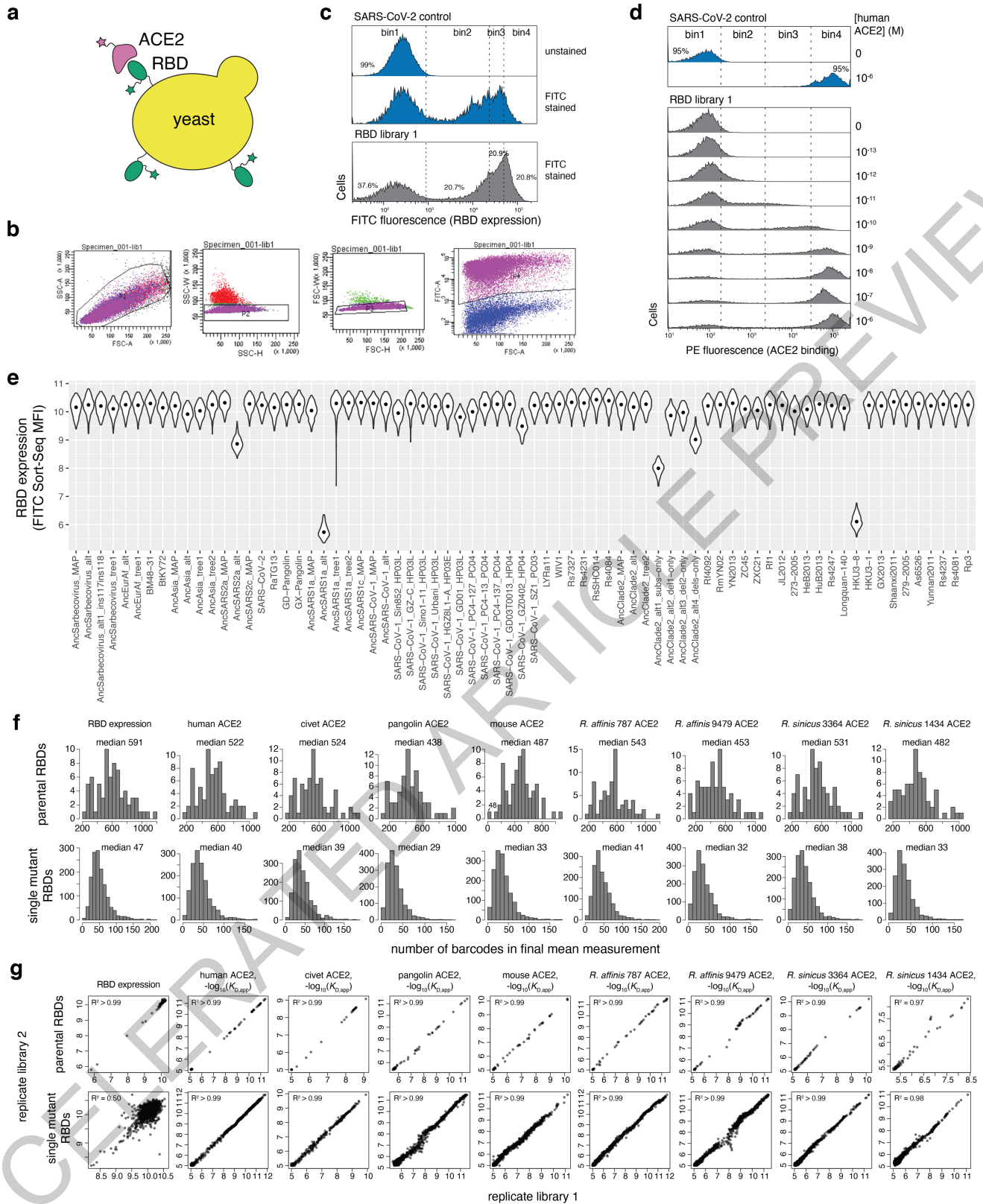
Peer review **Peer review information** Nature thanks Zheng-Li Shi and the other, anonymous, reviewers for their contribution to the peer review of this work. Peer review reports are available.

Reprints and permissions information is available at <http://www.nature.com/reprints>.



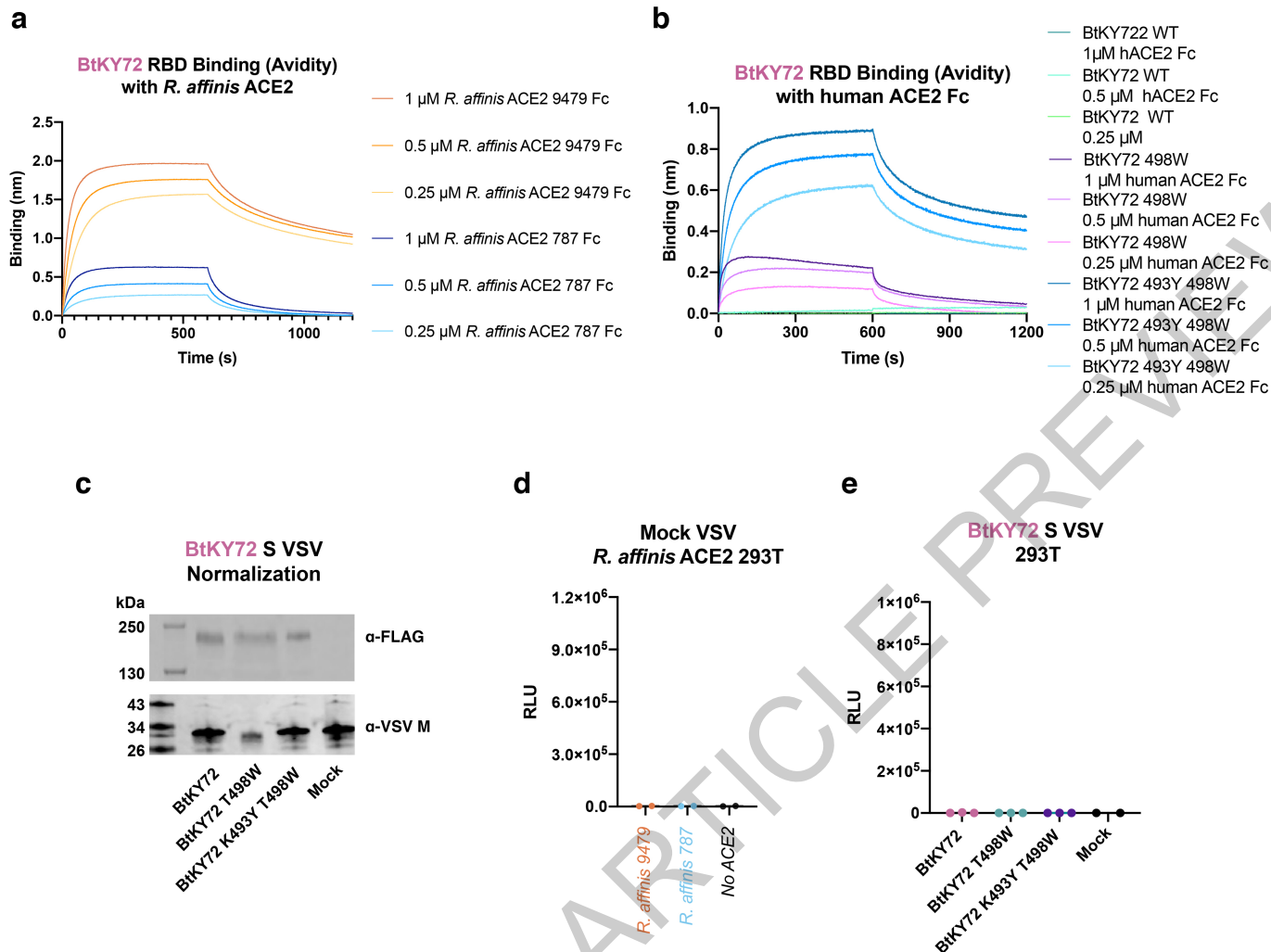
Extended Data Fig. 1 | Robustness of the root of the sarbecovirus ingroup. To establish robustness of our conclusion that the first sarbecovirus divergence is between sarbecoviruses from Africa and Europe and those from Asia, we inferred phylogenies based on alignments of RBD (SARS-CoV-2 spike residues N331-T531) (**a, b**) or the full spike gene (**c, d**) and nucleotide (**a, c**) or amino-acid (**b, d**) alignments and substitution models. In all four cases, the first sarbecovirus bipartition is placed between sarbecoviruses in Africa/Europe and those in Asia. The placement of the overall tree root is arbitrary with respect to the relationship among non-sarbecovirus outgroups, but this arbitrary placement does not impact the sarbecovirus ingroup rooting. The primary variations among trees includes a potential paraphyletic separation of BtKY72 and BM48-31 from Europe and Africa such that they do not form a

monophyletic clade (**b**; also seen in Extended Data Fig. 10a-c), and variation in the relationships among the three Asia sarbecovirus clades (whose relationship is also inferred with a very low bootstrap support value in our primary phylogeny in Fig. 1a). Known recombination of RBDs with respect to other spike segments among viruses creates incongruencies between spike and RBD trees among Asian sarbecovirus lineages (e.g. ZC45 and ZXC21), though recombination has not been reported among the Africa and Europe spikes and those in Asia. Scale bar, expected number nucleotide or amino-acid substitutions per site. Node labels illustrate bootstrap support values for sarbecovirus and Asia sarbecovirus monophyly. Sequences colored by their RBD clade as in Fig. 1a.



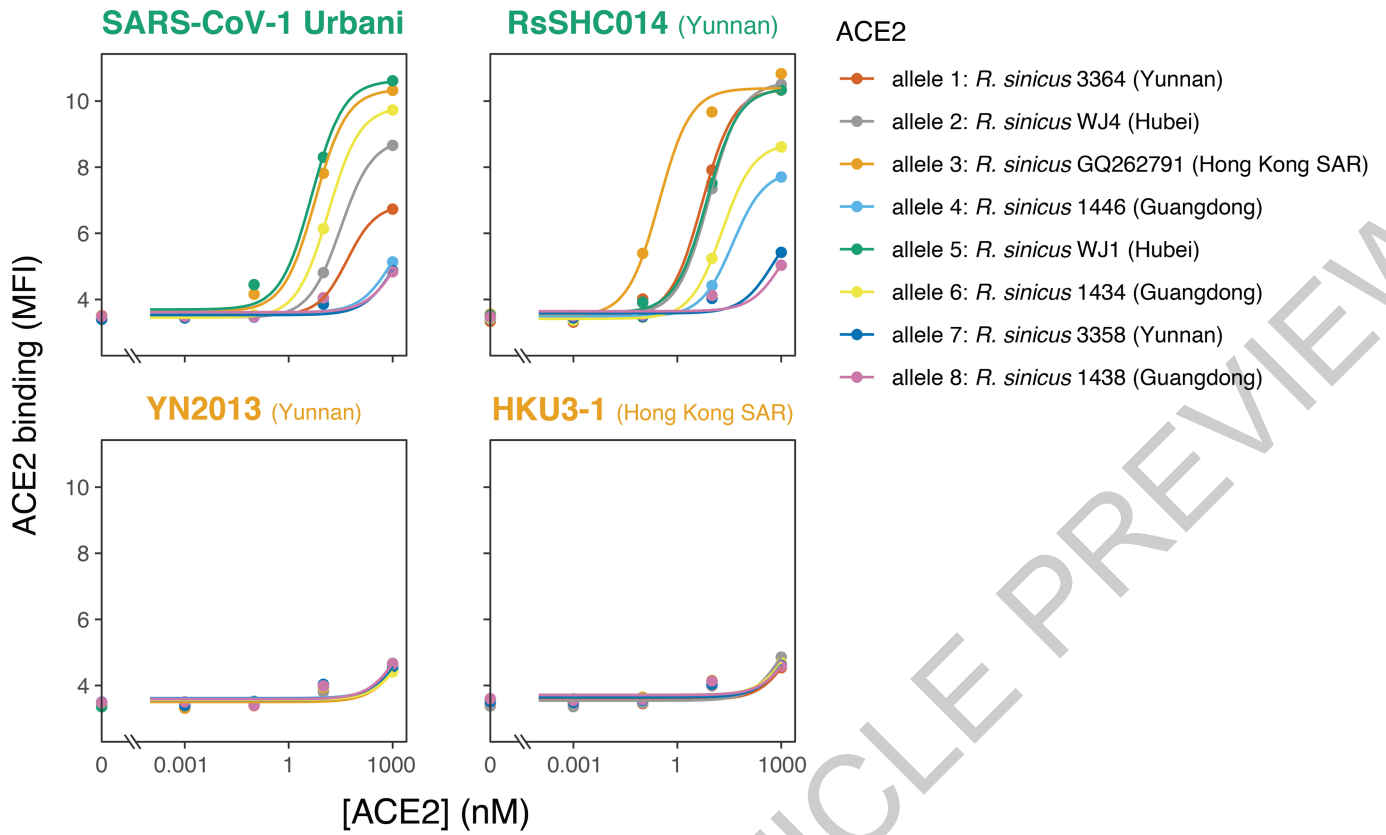
Extended Data Fig. 2 | Experimental details of Sort-seq assays. **a**, RBD yeast-surface display enables detection of folded RBD expression and ACE2 binding. **b**, Representative gating for single (SSC-A versus FSC-A, SSC-W versus SSC-H, and FSC-W versus FSC-W), RBD+ (FITC versus FSC-A) cells. **c**, Representative bins drawn on single cells for expression Sort-seq measurements. **d**, Representative bins drawn on single, RBD+ cells for ACE2 Tite-seq^{12,66} measurements. **e**, Per-variant expression, shown as violin plots

across replicate barcodes representing each variant within the gene libraries. **f**, Number of distinct barcodes for each parental (top) or mutant (bottom) RBD genotype used in the determination of final pooled measurements across libraries. **g**, Correlation in measured phenotypes between independently assembled and barcoded gene library duplicates for parental (top) or mutant (bottom) RBD genotypes.



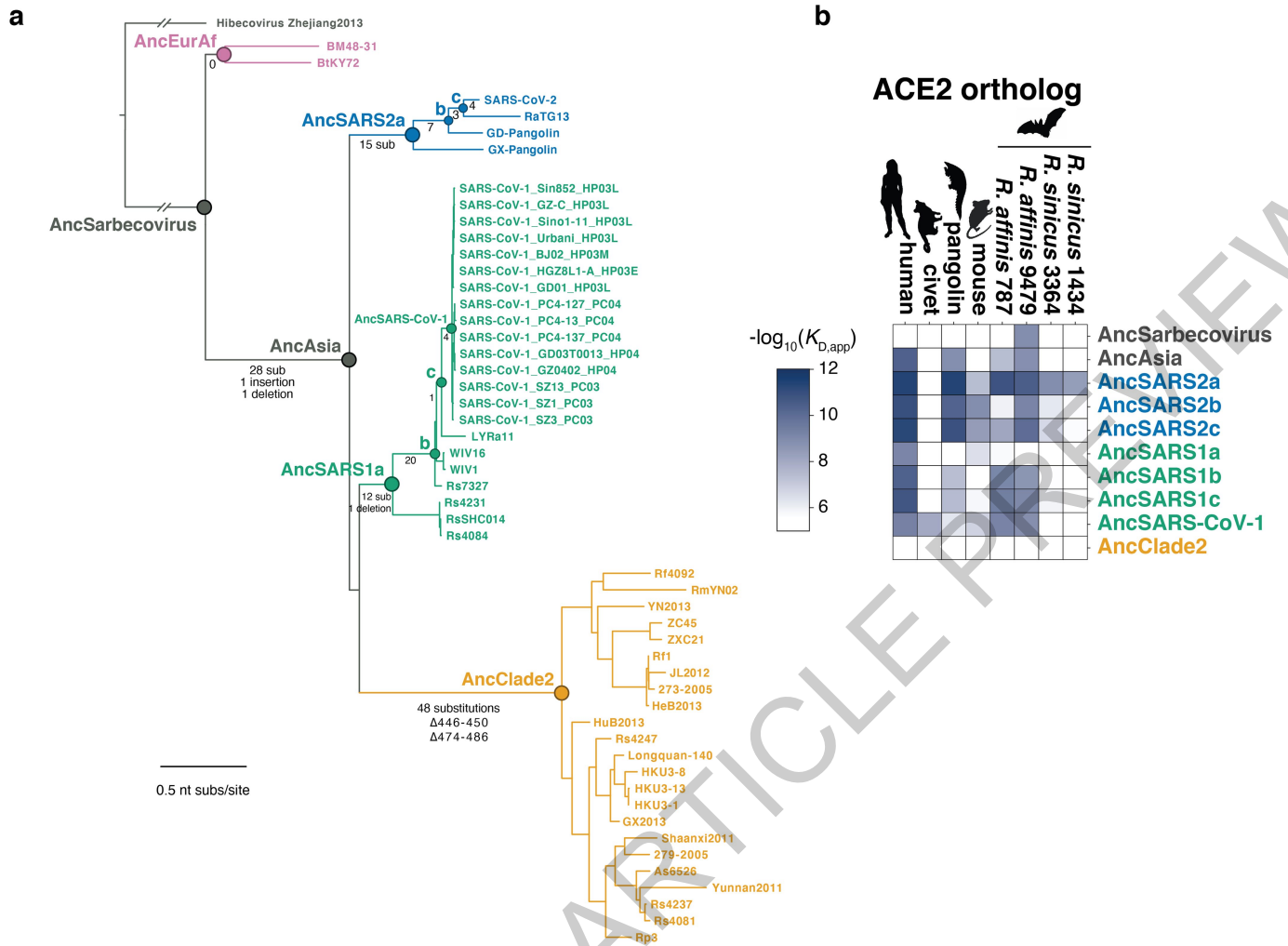
Extended Data Fig. 3 | Normalization and controls for biolayer interferometry binding and pseudovirus entry assays. **a, b** Biolayer interferometry binding analysis of a range of *R. affinis* ACE2-Fc (**a**) or human ACE2-Fc (**b**) concentrations to biotinylated BtKY72 RBD (parental or mutant) immobilized at the surface of streptavidin biosensors. **c**, Representative Western blots for quantification of spike incorporation into pseudoviral particles. Anti-FLAG (Sigma F3165) identifies incorporation of 3xFLAG-tagged spike, and anti-VSV-M (Kerafast EB0011) identifies level of VSV backbone. Viral inputs into cell entry assays were normalized across pseudoviral particles by S incorporation as determined in the anti-FLAG Western blot. Blot

representative of biological duplicate generations of each pseudovirus. For gel source data, see Supplementary Figure 1. **d**, Entry into *R. affinis* ACE2-expressing HEK293T cells by mock VSV particles produced in cells in which no spike gene was transfected. Each point represents the mean of technical triplicates for assays performed with independent preparation of pseudoviral particles (biological replicates). **e**, Entry of pseudoviral particles into HEK293T cells not transfected with any ACE2. Each point represents the mean of technical triplicates for assays performed with independent preparation of pseudoviral particles (biological replicates).



Extended Data Fig. 4 | Clade 2 RBD binding to an expanded panel of *R. sinicus* ACE2 alleles. Binding curves for Clade 1a (SARS-CoV-1 Urbani and RsSHC014) and Clade 2 (YN2013 and HKU3-1) sarbecovirus RBDs for 8 *R. sinicus* ACE2 alleles. Measurements performed with yeast-displayed RBDs and

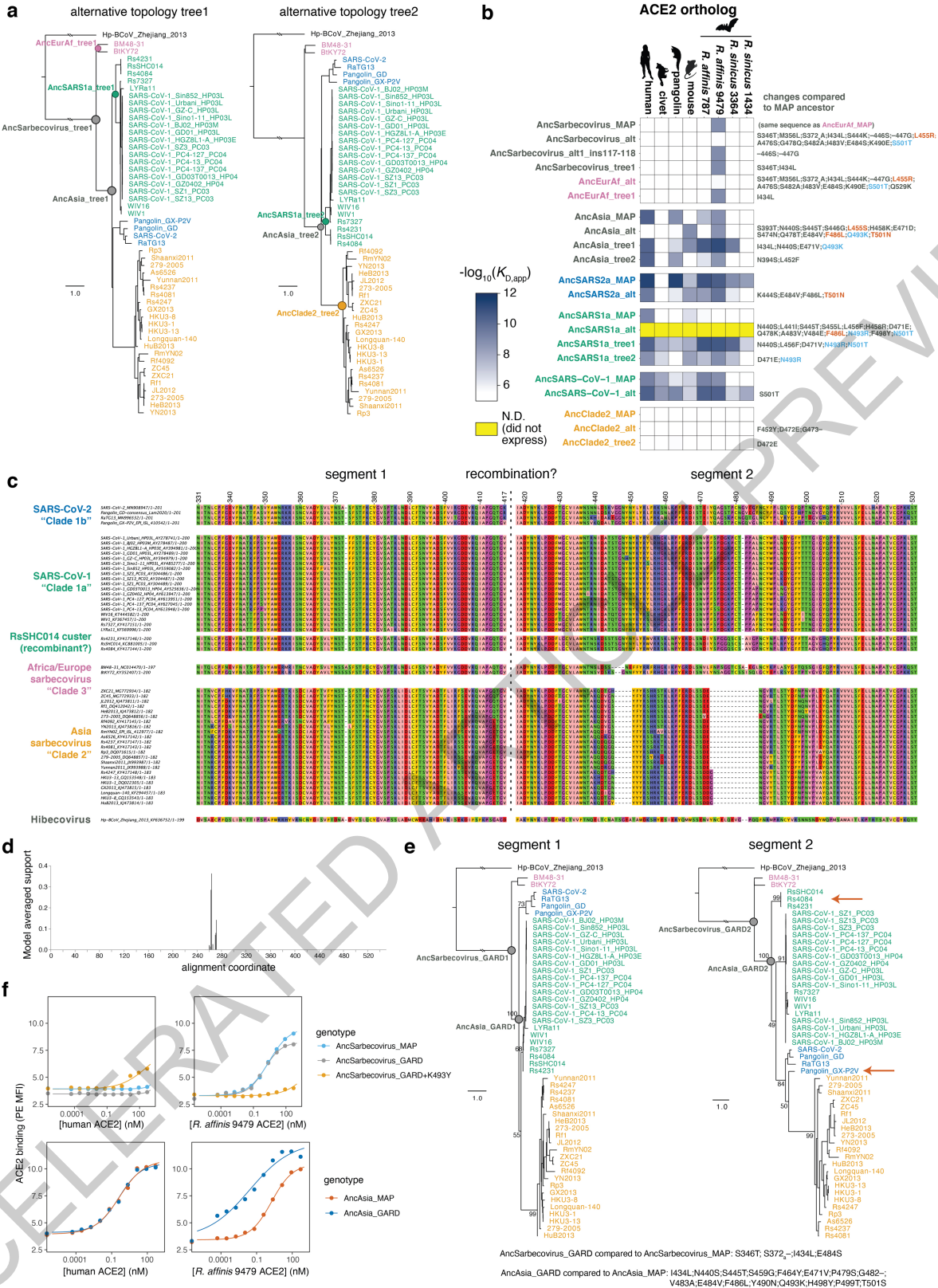
purified dimeric ACE2 proteins, measured by flow cytometry. Data from a single experimental replicate. Region of sampling for bat sarbecoviruses and *R. sinicus* ACE2 alleles are provided. RsSHC014, YN2013, and HKU3-1 were all sampled from *R. sinicus* bats.



Extended Data Fig. 5 | Full set of RBD ancestral sequence reconstructions.

a. Phylogeny with labeled nodes representing all ancestors tested, including nodes within the SARS-CoV-1 and SARS-CoV-2 clades leading to the human viruses. Branches are annotated with the number of amino-acid substitutions

and indels that are inferred to have occurred along each branch. **b.** Phenotypes of all most plausible ancestral sequences (including repetition of the data represented in Fig. 2b).



Extended Data Fig. 6 | See next page for caption.

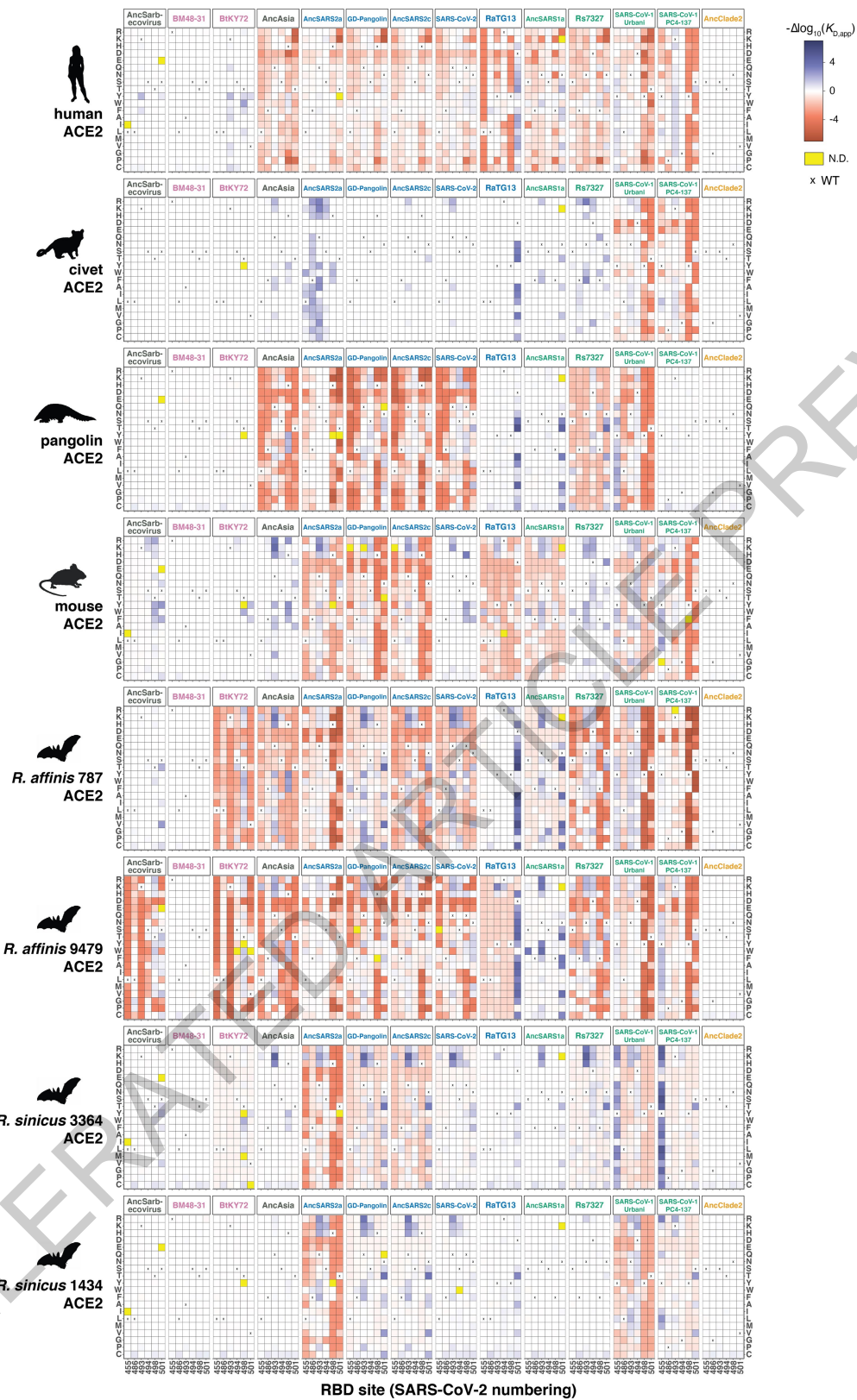
Article

Extended Data Fig. 6 | Robustness to uncertainties in ancestral reconstructions.

a. We performed ancestral sequence reconstructions on phylogenies constraining sister relationships between SARS-CoV-2 clade and Clade 2 (tree1) or SARS-CoV-1 and SARS-CoV-2 clades (tree2) due to ambiguity in these relationships (Fig. 1a and Extended Data Fig. 1). **b.** ACE2 binding of alternative reconstructions. "Alt" ancestors incorporate all secondary reconstructed states with posterior probability $>0.2^{38}$; "tree1" and "tree2" ancestors are inferred on the constrained trees in (a); and "ins117-118" tests the ambiguity of an indel separate from the remaining substitutions in AncSarbecovirus_alt. Sequence differences are listed at right relative to the maximum a posteriori (MAP) ancestors from Fig. 2b and Extended Data Fig. 5b. Mutations are colored red if they were sufficient to abolish the ancestral phenotype and blue if they reinforced it (Extended Data Fig. 7). Dramatic changes to inferred ancestral phenotypes are mostly observed in the alt ancestors which are the most probabilistically distant, while the tree1 and tree2

alternatives generally recapitulate the MAP phenotypes. The exception is AncSARS1a, where the tree1 and tree2 alternatives better match what would be expected based on the descendent RBD phenotypes (Fig. 1b). **c.** RBD amino acid alignment, indicating a potential recombination breakpoint identified by GARD⁵⁵ (from underlying nucleotide sequence). **d.** Relative support values for possible recombination breakpoints. **e.** Phylogenies inferred for the putative non-recombinant RBD segments. Arrows point to key changes in the segment 2 sub-tree. Each change is supported by weak bootstrap support values, and this hypothesis introduces a non-parsimonious history with respect to an indel at position 482. We reconstructed AncSarbecovirus_GARD and AncAsia_GARD as concatenated segment 1 and 2 reconstructions. Mutations that distinguish the GARD and MAP ancestor are listed at bottom. **f.** Binding of GARD ancestors to human and *R. affinis* 9479 ACE2 was determined in isogenic yeast-display titrations.

ACCELERATED ARTICLE PREVIEW

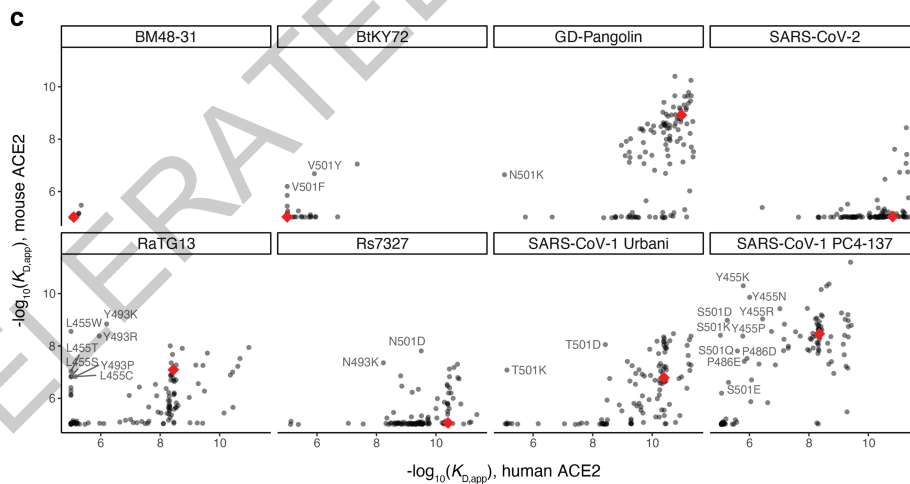
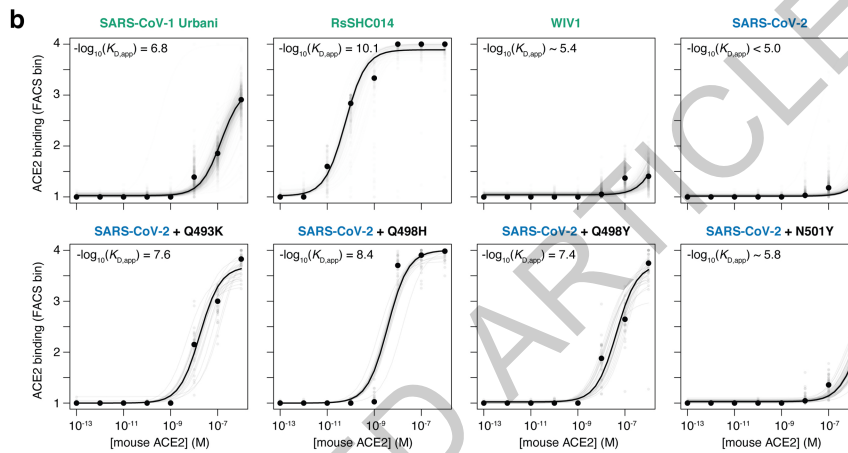


Extended Data Fig. 7 | Binding of RBD single mutants to each ACE2. Each heatmap square illustrates the change in binding caused by the indicated mutation at the indicated position (SARS-CoV-2 numbering), according to the

color key shown on the upper-right. Yellow, mutations that were absent from the library or not sampled with sufficient depth in a particular experiment. x markers indicate the wildtype state at each position in each RBD background.

a

virus	replication in lung of young BALB/c mouse	pathogenesis in young BALB/c mouse	notes	reference
SARS-CoV-1 Urbani infectious clone (i.c.)	efficient	none	N/A	Roberts et al. <i>PLOS Path</i> 2007
SARS-CoV-1 Urbani MA15	enhanced compared to SARS-CoV-1 i.c.	weight loss, lethality	six changes selected in serial passage; S Y436H key to pathogenesis	Roberts et al. <i>PLOS Path</i> 2007; Frieman et al. <i>JVI</i> 2012
RsSHC014 i.c.	efficient, but lower than SARS-CoV-1 i.c.	none	N/A	Menachery et al. <i>Nat Med</i> 2015
RsSHC014 S/ MA15 backbone	similar efficiency as SARS-CoV-1 MA15	weight loss, no lethality	MA15 backbone minus S Y436H (RsSHC014 S)	Menachery et al. <i>Nat Med</i> 2015
WIV1 i.c.	inefficient	none	N/A	Menachery et al. <i>PNAS</i> 2016
WIV1 S/ MA15 backbone	inefficient	none	MA15 backbone minus S Y436H (WIV1 S)	Menachery et al. <i>PNAS</i> 2016
SARS-CoV-2 WA1 i.c.	undetectable	none	N/A	Dinnon et al. <i>Nature</i> 2020
SARS-CoV-2 WA1 MA	efficient	no weight loss or lethality; signs of impaired lung function	rationally designed, Q498Y+P499T	Dinnon et al. <i>Nature</i> 2020
SARS-CoV-2 MASCp6	efficient	no weight loss or lethality; signs of impaired lung function	five changes selected in serial passage; includes S N501Y	Gu et al. <i>Science</i> 2020
SARS-CoV-2 WBP-1	efficient	lethality	1 deletion and 5 nonsyn mutations selected in serial passage; includes S Q493K and Q498H	Huang et al. <i>EBioMedicine</i> 2021
SARS-CoV-2 B.1.1.7	inefficient	none	alpha VOC; includes S N501Y	Montagutelli et al. <i>bioRxiv</i> 2021
SARS-CoV-2 B.1.351	efficient	none	beta VOC; includes S K417N, E484K, N501Y	Montagutelli et al. <i>bioRxiv</i> 2021
SARS-CoV-2 P.1	efficient	none	gamma VOC; includes S K417T, E484K, N501Y	Montagutelli et al. <i>bioRxiv</i> 2021



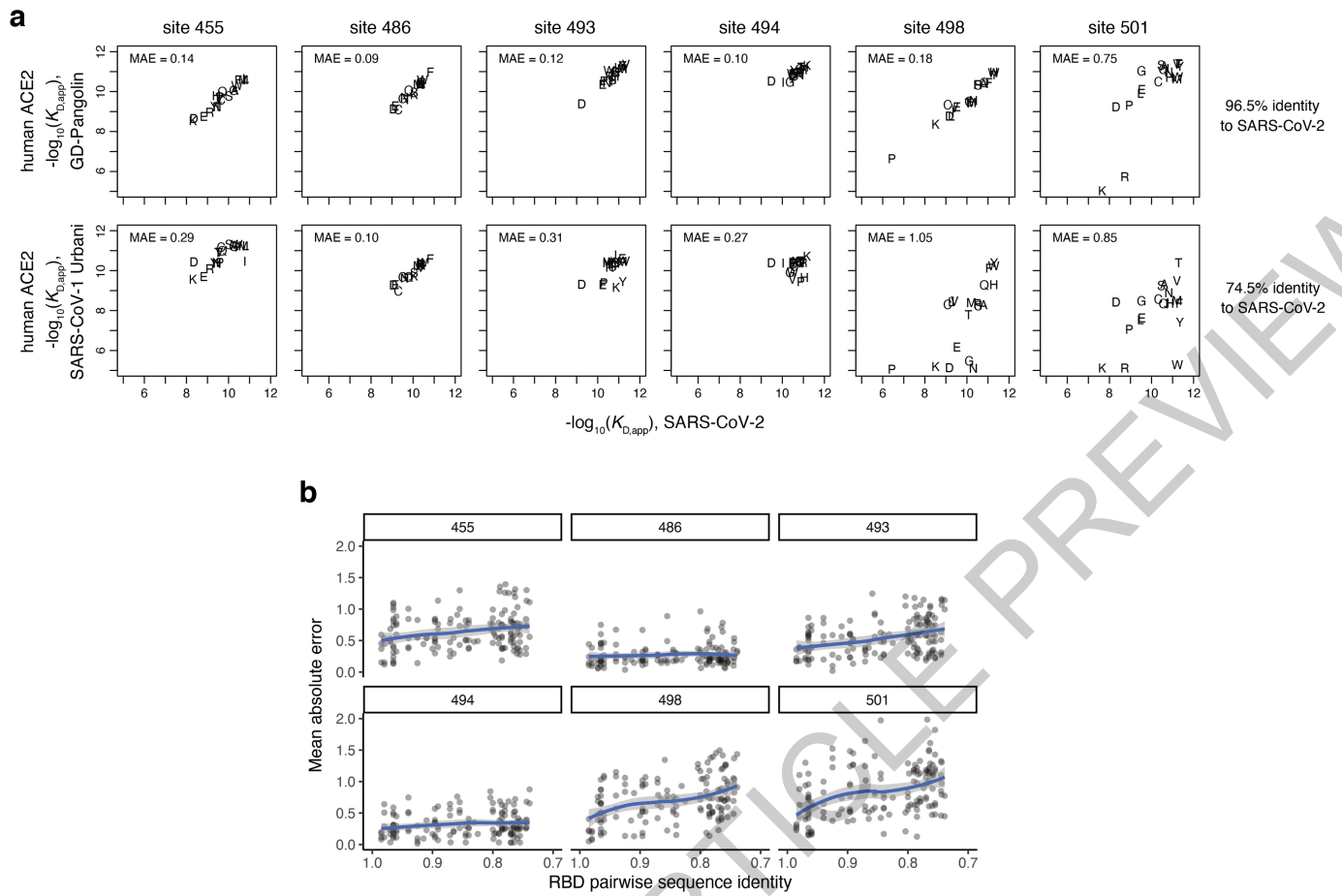
Extended Data Fig. 8 | See next page for caption.

Extended Data Fig. 8 | Existing data on sarbecoviruses in mice, and affinities of RBDs and key mutants for mouse versus human ACE2.

a, Summary of infectivity and pathogenesis of natural sarbecovirus and mouse-adapted strains from prior studies^{31,42-44,67-70}. **b**, High-throughput titration curves for relevant genotypes from **(a)**. Details as in Fig. 1d. Strength of binding to mouse ACE2 explains the infectivity and pathogenesis of SARS-CoV-1 Urbani and RsSHC014^{31,43}, relative to the weak or absent replication of WIV1⁴⁴ and SARS-CoV-2⁴² in mice. Mutagenesis data explain the inefficient mouse infectivity of the SARS-CoV-2 B.1.1.7 isolate⁷⁰ which incorporates the N501Y RBD mutation, relative to the efficient replication of the mouse-adapted

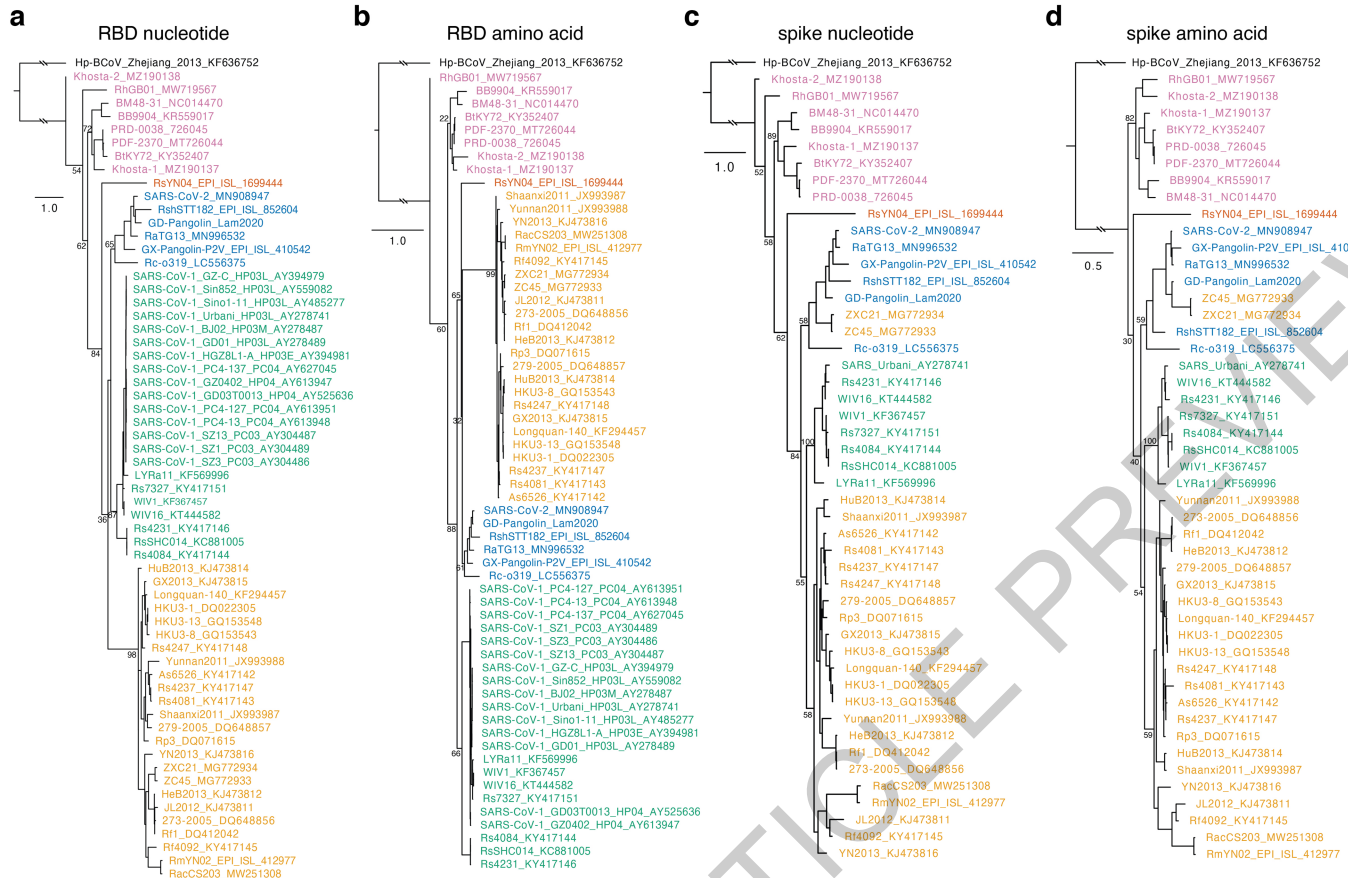
SARS-CoV-2 isolate containing Q498Y⁴² or the pathogenic WBP-1 strain containing Q493K and Q498H⁶⁹. **c**, An ideal mouse-adapted laboratory sarbecovirus strain would bind mouse ACE2 but not human ACE2 due to biosafety considerations. The large red points indicate the affinity of the parental RBD for human and mouse ACE2. The smaller black points indicate mutations, and key mutations that enhance binding to mouse versus human ACE2 are labeled (using SARS-CoV-2 numbering). Further mouse ACE2 specificity may be enabled via mutations at other positions not surveyed in our set of six positions.

ACCELERATED ARTICLE PREVIEW

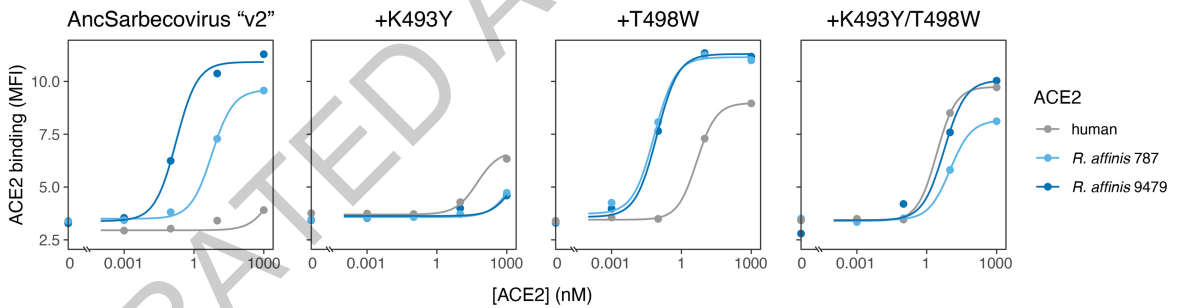


Extended Data Fig. 9 | Epistasis and turnover in mutational effects.
a, Example correlations in binding affinities for mutants in distinct RBD backgrounds at each site for human ACE2. Plots illustrate mutant avidities for human ACE2 and mean absolute error (residual) in the correlation for mutation measurements in GD-Pangolin (top) and SARS-CoV-1 Urbani (bottom) versus

SARS-CoV-2. Plotting symbols indicate amino acid for each measurement.
b, Epistatic turnover in mutational effects across RBD backgrounds. Details as in Fig. 3g, but incorporating mutation effects among RBD pairs across all tested ACE2s. Blue line and shaded gray, LOESS mean and 95% CI trendline. See Extended Data Fig. 9b for analysis across all ACE2 orthologs.



e AncSarbecovirus_MAP compared to AncSarbecovirus_v2:
 Q340E;T346S;D360N;A372_S;G413A;L434I;R439N;I441L;K444S;Q445S;G446-; -448G; -449N; -450N;Y452F;A475P; -482s;P483I;S484E;E490K;V501S



Extended Data Fig. 10 | Robustness of rooting and AncSarbecovirus phenotype in a phylogeny incorporating newly reported sequences.

a-d. Phylogenetic inference with inclusion of newly reported sarbecovirus sequences (Fig. 4a). As in Extended Data Fig. 1, we infer phylogenies with RBD (**a,b**) and full spike alignments (**c,d**), both on nucleotide sequences (**a,c**) and translated amino acid (**b,d**) sequence alignments. The full set of outgroup betacoronavirus sequences shown in Extended Data Fig. 1 were also included in this tree inference but truncated from the display for visual clarity. The phylogeny in Fig. 4a is a constrained version of the RBD nucleotide tree from (**a**) where we constrained a monophyletic relationship among Africa/Europe sarbecoviruses due to uncertainty in the exact placement of the root within or

relative to the Africa/Europe sarbecovirus clade. **e.** ACE2 binding by parental RBD and candidate mutants in an updated AncSarbecovirus sequence ("v2") inferred from the phylogeny in Fig. 4a that incorporates many newly described sarbecovirus RBDs, including some in important new phylogenetic locations. The unconstrained tree in (**a**) leads to inference of an AncSarbecovirus sequence that is identical to Khosta-2 (which also binds ACE2). Sequence differences between the original MAP AncSarbecovirus and the "v2" reconstruction are listed at top. Measurements performed with yeast-displayed RBDs and purified dimeric ACE2 proteins, measured by flow cytometry. Data from a single experimental replicate.

Reporting Summary

Nature Portfolio wishes to improve the reproducibility of the work that we publish. This form provides structure for consistency and transparency in reporting. For further information on Nature Portfolio policies, see our [Editorial Policies](#) and the [Editorial Policy Checklist](#).

Statistics

For all statistical analyses, confirm that the following items are present in the figure legend, table legend, main text, or Methods section.

n/a Confirmed

- The exact sample size (n) for each experimental group/condition, given as a discrete number and unit of measurement
- A statement on whether measurements were taken from distinct samples or whether the same sample was measured repeatedly
- The statistical test(s) used AND whether they are one- or two-sided
Only common tests should be described solely by name; describe more complex techniques in the Methods section.
- A description of all covariates tested
- A description of any assumptions or corrections, such as tests of normality and adjustment for multiple comparisons
- A full description of the statistical parameters including central tendency (e.g. means) or other basic estimates (e.g. regression coefficient) AND variation (e.g. standard deviation) or associated estimates of uncertainty (e.g. confidence intervals)
- For null hypothesis testing, the test statistic (e.g. F , t , r) with confidence intervals, effect sizes, degrees of freedom and P value noted
Give P values as exact values whenever suitable.
- For Bayesian analysis, information on the choice of priors and Markov chain Monte Carlo settings
- For hierarchical and complex designs, identification of the appropriate level for tests and full reporting of outcomes
- Estimates of effect sizes (e.g. Cohen's d , Pearson's r), indicating how they were calculated

Our web collection on [statistics for biologists](#) contains articles on many of the points above.

Software and code

Policy information about [availability of computer code](#)

- Data collection * Cell sorting experiments were operated using BD FACSDiva software (v. 8.0.2), and flow cytometry data processed in FlowJo (v. 10)
- Data analysis
 - * phylogenetics and bioinformatics software includes mafft (v. 7.471), PAL2NAL (v. 14), RAXML (v. 8.2.12), FastML (v. 3.11) and GARD (v. 0.2)
 - * PacBio sequences were analyzed with ccs (v. 5.0.0) and alignparse (v. 0.1.6)
 - * Illumina sequences were processed with dms_variants (v. 0.8.5), and analyzed with fitdistrplus (v. 1.0.14)
 - * All custom code used for data analysis is available on GitHub: https://github.com/jbloomlab/SARsR-CoV_homolog_survey
 - * A summary of the computational pipeline and links to individual notebooks detailing steps of analysis is available on Github: https://github.com/jbloomlab/SARsR-CoV_homolog_survey/blob/master/results/summary/summary.md. Specific notebooks are listed below:
 - * All steps of bioinformatic analysis, including specific programmatic commands, alignments, raw data, and output files can be found on GitHub: https://github.com/jbloomlab/SARsR-CoV_homolog_survey/tree/master/RBD_ASR
 - * The PacBio CCS processing pipeline is available on GitHub: https://github.com/jbloomlab/SARsR-CoV_homolog_survey/blob/master/results/summary/process_ccs.md
 - * The full pipeline for computing per-barcode DMS expression values is described on GitHub: https://github.com/jbloomlab/SARsR-CoV_homolog_survey/blob/master/results/summary/compute_expression_meanF.md
 - * The full pipeline for computing per-barcode DMS binding affinities is described on GitHub: https://github.com/jbloomlab/SARsR-CoV_homolog_survey/blob/master/results/summary/compute_binding_Kd.md
 - * The full pipeline for barcode collapsing to final variant/mutant scores is described on GitHub: https://github.com/jbloomlab/SARsR-CoV_homolog_survey/blob/master/results/summary/barcode_to_genotype_phenotypes.md.

For manuscripts utilizing custom algorithms or software that are central to the research but not yet described in published literature, software must be made available to editors and reviewers. We strongly encourage code deposition in a community repository (e.g. GitHub). See the Nature Portfolio [guidelines for submitting code & software](#) for further information.

Data

Policy information about [availability of data](#)

All manuscripts must include a [data availability statement](#). This statement should provide the following information, where applicable:

- Accession codes, unique identifiers, or web links for publicly available datasets
- A description of any restrictions on data availability
- For clinical datasets or third party data, please ensure that the statement adheres to our [policy](#)

* PacBio circular consensus sequences are available from the NCBI SRA, BioSample SAMN18316101
 * Illumina sequences for barcode counting are available from the NCBI SRA, BioSample SAMN20174027
 * Table of measurements of ACE2 binding and expression for all parental RBDs is available on GitHub: https://github.com/jbloomlab/SARSr-CoV_homolog_survey/blob/master/results/final_variant_scores/wt_variant_scores.csv
 * Table of measurements of ACE2 binding and expression for all single mutant RBDs is available on GitHub: https://github.com/jbloomlab/SARSr-CoV_homolog_survey/blob/master/results/final_variant_scores/mut_variant_scores.csv
 * All virus names, species and location of sampling, and sequence accessions (GenBank, GISAID) or citations are provided on GitHub: https://github.com/jbloomlab/SARSr-CoV_homolog_survey/blob/master/RBD_ASR/RBD_accessions.csv.

Field-specific reporting

Please select the one below that is the best fit for your research. If you are not sure, read the appropriate sections before making your selection.

- Life sciences Behavioural & social sciences Ecological, evolutionary & environmental sciences

For a reference copy of the document with all sections, see [nature.com/documents/nr-reporting-summary-flat.pdf](https://www.nature.com/documents/nr-reporting-summary-flat.pdf)

Life sciences study design

All studies must disclose on these points even when the disclosure is negative.

Sample size	No sample size determination was performed, as we were not performing statistical tests dependent on appropriate sample size determination
Data exclusions	No data were excluded from analyses
Replication	High-throughput titration measurements were replicated with two independently constructed gene libraries (Extended Data Fig. 2g). BLI binding assays were replicated in three batches of purified protein. Pseudovirus entry assays were replicated with two or three independent batches of pseudovirus generation. All experimental points are shown for DMS assays and pseudoviral entry assays, showing replication of results. Representative BLI traces are shown but were replicated, including when replicating under different sample concentrations (Extended Data Fig. 3a,b).
Randomization	Randomization was not performed. We conducted a standard survey of measurements across a panel of genotypes, which is not a study design that requires randomization
Blinding	Blinding was not performed in our study. High throughput titration experiments are conducted in massively parallel bulk experiments where there is no identifiability of individual variant genotypes, so blinding is not a relevant experimental attribute.

Reporting for specific materials, systems and methods

We require information from authors about some types of materials, experimental systems and methods used in many studies. Here, indicate whether each material, system or method listed is relevant to your study. If you are not sure if a list item applies to your research, read the appropriate section before selecting a response.

Materials & experimental systems

n/a	Involved in the study
<input type="checkbox"/>	<input checked="" type="checkbox"/> Antibodies
<input type="checkbox"/>	<input checked="" type="checkbox"/> Eukaryotic cell lines
<input checked="" type="checkbox"/>	<input type="checkbox"/> Palaeontology and archaeology
<input checked="" type="checkbox"/>	<input type="checkbox"/> Animals and other organisms
<input checked="" type="checkbox"/>	<input type="checkbox"/> Human research participants
<input checked="" type="checkbox"/>	<input type="checkbox"/> Clinical data
<input checked="" type="checkbox"/>	<input type="checkbox"/> Dual use research of concern

Methods

n/a	Involved in the study
<input checked="" type="checkbox"/>	<input type="checkbox"/> ChIP-seq
<input type="checkbox"/>	<input checked="" type="checkbox"/> Flow cytometry
<input checked="" type="checkbox"/>	<input type="checkbox"/> MRI-based neuroimaging

Antibodies

Antibodies used	FITC-conjugated chicken anti-c-Myc (Immunology Consultants Lab, CYMC-45F); PE-conjugated streptavidin (ThermoFisher S866); iFluor-647-conjugated mouse anti-His (Genscript A01802); PE-conjugated goat anti-human IgG (Jackson ImmunoResearch Labs 109-115-098); mouse anti-VSV G (ATCC CRL-2700); Alexa Fluor 680-conjugated AffiniPure goat anti-mouse IgG (Jackson ImmunoResearch 115-625-174); mouse monoclonal anti-FLAG M2 antibody (Sigma F3165); Anti-VSV-M [23H12] antibody (Kerafast EB0011)
Validation	No validation was performed

Eukaryotic cell lines

Policy information about [cell lines](#)

Cell line source(s)	* Expi293F: ThermoFisher A14527 * HEK293T: ATCC CRL-11268 * HEK293T-ACE2: Crawford, KHD et al. Protocol and reagents for pseudotyping lentiviral particles with SARS-CoV-2 spike protein for neutralization assays. <i>Viruses</i> 12 (2020).
Authentication	Cell lines were not authenticated
Mycoplasma contamination	Cell lines were not tested for mycoplasma contamination
Commonly misidentified lines (See ICLAC register)	No commonly misidentified lines were used.

Flow Cytometry

Plots

Confirm that:

- The axis labels state the marker and fluorochrome used (e.g. CD4-FITC).
- The axis scales are clearly visible. Include numbers along axes only for bottom left plot of group (a 'group' is an analysis of identical markers).
- All plots are contour plots with outliers or pseudocolor plots.
- A numerical value for number of cells or percentage (with statistics) is provided.

Methodology

Sample preparation	Yeast libraries expressing a library of sarbecovirus RBD variants on the cell surface were induced using standard culture techniques, as described in the Methods
Instrument	Sorting was conducted on a BD FACSAria II cell sorter. Flow cytometry analysis was conducted on a BD LSRFortessa X50 flow cytometer.
Software	Cell sorting experiments were operated using BD FACSDiva software (v. 8.0.2), and flow cytometry data processed in FlowJo (v. 10)
Cell population abundance	We were not sorting a specific target population, but rather partitioning all cells into encompassing bins on the basis of expression or ACE2 labeling, for downstream sequencing and reconstruction of per-variant labeling.
Gating strategy	Single cells were selected via FSC/SSC, FSC-W/FSC-A, and SSC-W/SSC-A gating. RBD-expressing cells were gated using a FITC/FSC gate. Single, RBD+ cells were sorted into bins of fluorescence on the basis of unlabeled or labeled control cells expressing the unmutated SARS-CoV-2 RBD. Representative gating schemes are illustrated in Extended Data Fig. 2b-d.

- Tick this box to confirm that a figure exemplifying the gating strategy is provided in the Supplementary Information.