



The precursors of CD8⁺ tissue resident memory T cells: from lymphoid organs to infected tissues

Lianne Kok¹, David Masopust² and Ton N. Schumacher¹✉

Abstract | CD8⁺ tissue resident memory T cells (T_{RM} cells) are essential for immune defence against pathogens and malignancies, and the molecular processes that lead to T_{RM} cell formation are therefore of substantial biomedical interest. Prior work has demonstrated that signals present in the inflamed tissue micro-environment can promote the differentiation of memory precursor cells into mature T_{RM} cells, and it was therefore long assumed that T_{RM} cell formation adheres to a 'local divergence' model, in which T_{RM} cell lineage decisions are exclusively made within the tissue. However, a growing body of work provides evidence for a 'systemic divergence' model, in which circulating T cells already become preconditioned to preferentially give rise to the T_{RM} cell lineage, resulting in the generation of a pool of T_{RM} cell-poised T cells within the lymphoid compartment. Here, we review the emerging evidence that supports the existence of such a population of circulating T_{RM} cell progenitors, discuss current insights into their formation and highlight open questions in the field.

CD8⁺ central memory T cells (CD8⁺ T_{CM} cells). CD8⁺ memory T cells with a high degree of proliferative potential upon reactivation, commonly identified by the expression of lymphoid homing marker CD62L, and that can be abundantly found in the spleen, blood and lymph nodes.

CD8⁺ effector memory T cells (CD8⁺ T_{EM} cells). CD8⁺ memory T cells with a high degree of cytotoxicity upon reactivation, which are commonly identified by the lack of CD62L expression, and that can be abundantly found in the spleen and blood.

¹Division of Molecular Oncology & Immunology, Oncode Institute, The Netherlands Cancer Institute, Amsterdam, The Netherlands.

²Department of Microbiology and Immunology, Center for Immunology, University of Minnesota Medical School, Minneapolis, MN, USA.

✉e-mail: t.schumacher@nki.nl

<https://doi.org/10.1038/s41577-021-00590-3>

A fundamental aspect of CD8⁺ T cells is their ability to adapt to the type of pathogens encountered. First, through the process of clonal expansion upon antigen recognition, the T cell pool becomes biased to recognize pathogens that it has previously been exposed to¹. Second, remodelling of the epigenetic landscape allows memory cells that are formed in this process to more rapidly exert effector functions². Third, the distribution of the CD8⁺ T cell memory compartment over different body sites maximizes the chance of early pathogen recognition upon renewed infection³. In line with the concept that the CD8⁺ memory T cell pool can provide rapid effector functions and has the capacity for renewed clonal expansion, this cell pool is highly diverse at the epigenetic, transcriptional and protein expression levels. Specifically, within the circulation (that is, blood, lymph and secondary lymphoid organs) two main subgroups of CD8⁺ memory T cells can be distinguished, often referred to as CD8⁺ central memory T cells (T_{CM} cells) and CD8⁺ effector memory T cells (T_{EM} cells), which collectively form the pool of CD8⁺ circulating memory T cells (here jointly referred to as T_{CIRC} cells). T_{CM} cells can be distinguished by high-level expression of the lymphoid homing markers CD62L and CCR7. They are considered to be multipotent and at least a subset of this cell pool display a heightened expansion potential upon antigen re-encounter⁴. By contrast, T_{EM} cells possess limited expansion potential and lack the ability to enter lymph nodes from the blood, but are marked by expression of

cytotoxicity-associated genes and can exert rapid effector functions upon renewed TCR signalling⁵. T_{EM} cells were long believed to be superior in penetrating and surveying peripheral tissues; however, this idea has come under scrutiny as recent work has suggested that T_{EM} cells and T_{EM} cell-like cells are mostly excluded from human and mouse non-lymphoid tissues (NLTs)^{6–9}.

In addition to the systemic CD8⁺ memory T cell pool, a pool of CD8⁺ tissue resident memory T cells (T_{RM} cells) that permanently reside within NLTs can be distinguished. Through a process of continuous migration and surveillance that is confined to distinct anatomic compartments, such as the stroma or the parenchyma of organs, T_{RM} cells patrol tissues to scan for foreign invaders^{10,11}. Following antigen encounter, T_{RM} cells rapidly induce a local state of alarm, resulting in the recruitment of other immune cells and the local production of antimicrobial and antiviral proteins by epithelial cells^{12,13}. In line with this 'pathogen alert' function, T_{RM} cells not only produce cytotoxicity-associated molecules, such as granzyme B and perforin, but also cytokines such as IFN γ and TNF that can influence the behaviour of neighbouring cells^{14–19}. Furthermore, the existence of T_{RM} cells that express minimal levels of cytolytic molecules, and may therefore mostly rely on this 'pathogen alert' function, has been reported in various human tissues^{20–23}. Whereas T_{RM} cells share transcriptional features with both T_{CM} cells and T_{EM} cells, they are unique in their expression of a tissue residency-promoting

CD8⁺ circulating memory T cells

(CD8⁺ T_{CIRC} cells). A collective term for all of the CD8⁺ memory T cells that can circulate through the body and that are predominantly found in the blood, spleen and lymph nodes; the T_{CIRC} cell population encompasses both the CD8⁺ central memory T cell (T_{CM} cell) and the CD8⁺ effector memory T cell (T_{EM} cell) lineages.

CD8⁺ tissue resident memory T cells

(CD8⁺ T_{RM} cells). CD8⁺ memory T cells that, under steady-state conditions, are consistently excluded from the circulation and reside in tissues; T_{RM} cells in mucosal tissue, such as the lung, gut and skin, are typically identified as CD103⁺CD69⁺.

CD8⁺ effector-stage T cells

(CD8⁺ T_{EFF} cells). All activated CD8⁺ T cells present around the peak of the expansion phase elicited by infection or vaccination, regardless of phenotype or function.

transcriptional signature, which marks T_{RM} cells in a wide range of tissues. Besides this core tissue residency signature, T_{RM} cells also display transcriptional features that are specific to individual tissues and allow their survival and long-term retention at those different sites^{24,25}.

The residency signature that marks T_{RM} cells in multiple tissues is characterized both by a reduced expression of proteins that promote tissue egress and a heightened expression of proteins that promote tissue retention. For instance, T_{RM} cells show reduced expression of the cell-surface molecules S1PR1 and CCR7 that promote T cells to leave NLTs, an observation that is explained by a lowered expression of the transcription factor KLF2, which drives *S1PR1* and *CCR7* transcription²⁶. On the other hand, T_{RM} cells express CD69 and, in the case of T_{RM} cells localized within epithelial tissues, the E-cadherin binding αE integrin (CD103, encoded by *Itgae*), which both promote tissue retention (for a comprehensive review of the molecular pathways that control tissue retention, please see REF.²⁷). The expression of CD69 and CD103 should be considered imperfect markers to infer tissue residency, as absence of their expression does not rule out long-term tissue retention and presence of expression does not exclude the potential to leave NLTs^{28–32}. Nevertheless, much of our current understanding of T_{RM} cells is based on analyses of CD69⁺CD103⁺ T_{RM} cells in epithelial tissues.

In line with their role as local sentinels, T_{RM} cells have been shown to both prevent and exacerbate pathologies. For instance, T_{RM} cells are not only superior to T_{CIRC} cells in conferring protection to recurring local pathogens^{33,34} but these cells can also provide protection against the development of skin malignancies^{35–37}. Moreover, tumour infiltrating lymphocytes that strongly resemble conventional T_{RM} cells have been associated with improved disease prognosis^{38,39}. At the same time, T_{RM} cells may drive immunotherapy-induced colitis⁴⁰, the skin autoimmune disorders vitiligo⁴¹ and psoriasis^{42,43} and also other autoimmune and allergic diseases⁴⁴, and may play a central role in allograft rejection⁴⁵. The involvement of T_{RM} cells in a range of human diseases makes the design of therapeutic strategies that can modulate either their production or their activity an attractive goal, and to realize this goal, it is critical to understand how the formation of this cell pool is regulated⁴⁶. In this Review, we discuss the processes that drive the formation of the CD103⁺ epithelial T_{RM} cell lineage, with a strong focus on signalling events that occur within the lymphoid compartment.

T_{RM} cell precursors within NLTs

At an early stage of an antigen-specific CD8⁺ T cell response, infected tissues are seeded by CD8⁺ effector-stage T cells (T_{EFF} cells); that is, activated T cells that can be observed around the peak of the expansion phase, regardless of their phenotype and function⁴⁷. T_{EFF} cells forming the first wave of T cells that can be detected at inflamed sites already show transcriptional differences relative to circulating T cells that are specific for the same antigen^{14,48}. Differentially expressed genes are associated with a wide range of cellular functions, including cell adhesion, cytokine and chemokine signalling,

co-stimulation and co-inhibition, and transcriptional regulation^{14,48}. Interestingly, early T_{EFF} cells present at the tissue site display increased expression of core T_{RM} cell genes, and at the peak of the T cell response the T cell population present at the tissue site already expresses more than 90% of the gene signature that differentiates T_{RM} cells from T_{CIRC} cells⁴⁹. This illustrates that the initiation of a T_{RM} cell differentiation process already occurs during early stages of the immune response.

Although the T_{EFF} cells at tissue sites show a rapid transcriptional and phenotypic divergence from their circulating counterparts, these T_{EFF} cells nevertheless do display the same diversity in cell states that has previously been described for circulatory T_{EFF} cells. Specifically, within the circulatory T_{EFF} cell compartment, two cell states are commonly distinguished: the relatively short-lived terminal effector cells that express high levels of KLRG1, T-BET and BLIMP1 and show high cytotoxic potential; and the memory precursor cells that give rise to stable circulating memory T cell populations and are generally defined by an elevated expression of IL-7Rα, ID3 and TCF1 (REF.⁵⁰). A similar dichotomy in phenotype and fate has been documented for the pool of T_{EFF} cells within NLTs^{51–53}. Furthermore, T cells in NLTs that resemble circulating terminal effector T cells fail to express the T_{RM}-associated markers CD103 and CD69, and gradually perish over time^{51,52}. On the contrary, T cells within NLTs that resemble memory precursor cells express CD103 and CD69, indicative of their potential to persist long term within the NLTs^{51,52}. Interestingly, at very early stages of the immune response, before the appearance of cells with the terminally differentiated (KLRG1⁺IL-7Rα⁻) phenotype, two transcriptionally disparate subgroups of T_{EFF} cells that differ in their differentiation potential can already be distinguished in the epithelium of the small intestine. Specifically, early effector T cells that are marked by high expression of IL-2Rα and EZH2, an epigenetic regulator known to modulate early effector T cell fate decisions^{54,55}, are prone to give rise to KLRG1⁺ terminal effector T cell-like cells, in contrast to their EZH2^{low}IL-2Rα^{low} counterparts that are superior in the generation of CD103⁺CD69⁺ T_{RM} cells⁴⁸.

Numerous signals that promote the differentiation of T_{RM} cells within the tissue micro-environment have been described, and these signals presumably contribute significantly to the emergence of cells with T_{RM} cell-like properties at the tissue site early during the immune response. For example, the presence of antigen^{56–60}, IL-7 (REF.⁶¹), IL-15 (REFS^{41,52,61–63}) and TGFβ^{64,65} within the non-lymphoid micro-environment promote T_{RM} cell differentiation in tissues such as the skin and lung. In particular, TGFβ is considered a central mediator of epithelial T_{RM} cell differentiation as it can modulate the expression of many molecules that specifically mark T_{RM} cells^{26,62,66,67}. In line with this, T cells that are insensitive to TGFβ signalling lack the capacity to develop into CD103⁺CD69⁺ T_{RM} cell precursors and T_{RM} cells in many epithelial tissues^{51,57,66,68}. Other T cell extrinsic factors that can influence T_{RM} cell formation are TNF and IL-33 (REFS^{26,66,69}), which can induce CD69 and CD103 expression and suppress KLF2 expression, and IL-21,

Lymphoid tissues

A collective term for the thymus, bone marrow, lymph nodes and spleen; in this Review, this term predominantly refers to spleen and lymph nodes.

which has recently been identified to boost the formation of CD103⁺ brain T_{RM} cells⁷⁰. However, a critical issue that has not been fully settled is whether these various signals primarily modulate T_{RM} cell fate at the inflamed tissue site or may also play a role in lineage instruction in the lymphoid compartment prior to tissue entry.

It is important to note that the signals driving the formation of T_{RM} cells differ between epithelial tissue types. For instance, abrogation of T cell intrinsic TGFβ signalling results in impaired production of T_{RM} cells in the lung, whereas the formation of T_{RM} cells in the nasal cavity is unaffected⁷¹. Similarly, IL-15 signalling is required for T_{RM} cell formation in some, but not all, tissues⁷². The idea that different routes to tissue residency exist is also supported by the observation that the transcription factor HOBIT promotes T_{RM} cell development in the skin and small intestine, but is not required for lung T_{RM} cell formation^{73,74}. Collectively, these results strengthen the idea that the processes that yield T_{RM} cells show a level of redundancy, and that environmental conditions can change the requirements for T cells to develop into T_{RM} cells.

Models of T_{RM} cell lineage divergence

Based on the studies discussed above, it is apparent that the potential for T_{RM} cell differentiation is already present in part of the T_{EFF} cell population that is located within NLTs early during infection. However, these findings do not address whether this potential is induced only after tissue entry or is already present before that stage. An analysis of T_{RM} cell-forming potential within the pool of activated circulating T cells has shown that cells with a memory precursor phenotype possess a superior

potential to yield T_{RM} cells, but this cell pool is also well equipped to yield T_{CIRCUM} cells^{49,52,75}. The hypothesis that the circulating memory precursor cell pool can sprout both T_{RM} cells and T_{CIRCUM} cells is compatible with two models for T_{RM} cell generation. In the 'local divergence' model, the circulating memory precursor pool is proposed to consist of cells that are equal in their potential to contribute to both the T_{RM} cell pool and the T_{CIRCUM} cell pool. Only upon stochastic tissue entry and subsequent encounter of local micro-environmental factors, such as TGFβ and IL-15, by a selection of memory precursor cells would these cells commit to the T_{RM} cell lineage and adopt tissue residency (FIG. 1a). In other words, in this model, signals within the NLTs dictate T_{RM} cell lineage commitment. In the alternative 'systemic divergence' model, events that occur prior to tissue entry, within the lymphoid tissue or in blood, already steer some memory precursor cells to their subsequent fate as T_{RM} cells. In this model, a dichotomy in memory-forming potential would already be present within the circulating memory precursor cell pool, providing part of that pool with an enhanced capacity to migrate into inflamed tissue and/or respond to inflamed tissue-derived environmental factors that support T_{RM} cell formation (FIG. 1b).

As described above, earlier work has identified numerous tissue-derived factors that can support T_{RM} cell formation, and based on these observations it was generally assumed that the tissue micro-environment autonomously instructs T_{RM} cell lineage decisions in uncommitted infiltrating memory precursor cells. However, numerous studies have subsequently identified factors within lymphoid tissues that are essential for the formation of the T_{RM} cell lineage, but not the

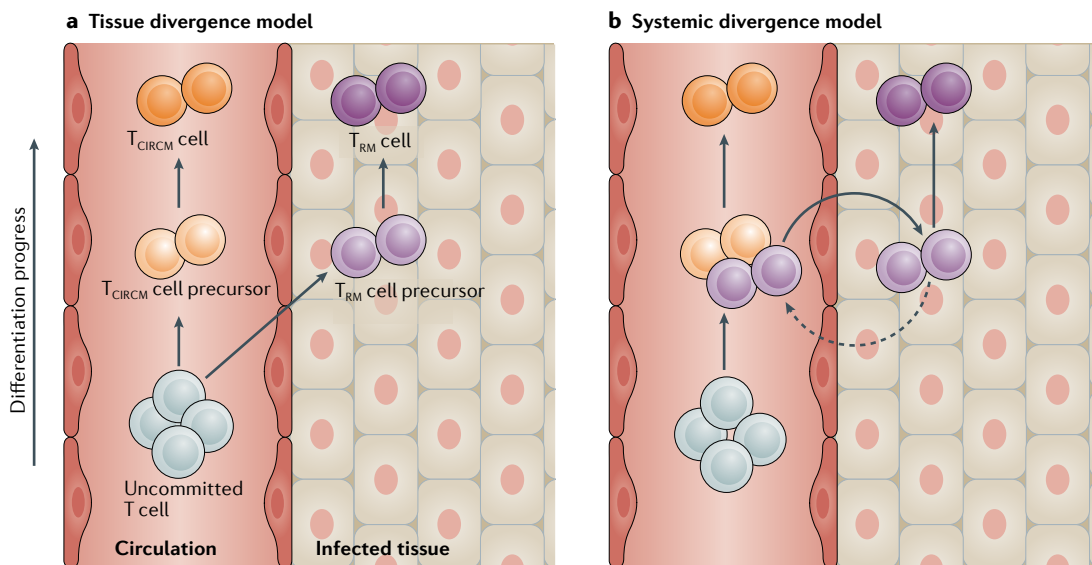


Fig. 1 | Models of T_{RM} cell lineage divergence. Branching of the CD8⁺ tissue resident memory T cell (T_{RM} cell) lineage from the circulating T cell lineages can be explained by two models. **a** | The tissue divergence model postulates that memory precursors within the circulation are equal in their potential to give rise to CD8⁺ circulating memory T cells (T_{CIRCUM} cells) and T_{RM} cells. Only upon reaching the tissue do cells undergo changes that skew them towards the T_{RM} cell lineage, whereas those memory precursor T cells that remain in circulation start to differentiate into T_{CIRCUM} cell lineages. **b** | The systemic divergence model postulates the existence of memory precursors within the circulating T cell pool that are poised to produce the T_{RM} cell lineage and these cells are superior in giving rise to T_{RM} cells relative to other circulating memory precursors. Note that these models do not address whether a fraction of cells with reduced T_{RM} cell-forming potential enter the tissue and later rejoin the circulation.

Fate conditioning/poising

Enhancing the intrinsic capacity of a cell to give rise to a particular cell lineage through the induction of epigenetic and/or transcriptional changes.

T_{RM} cell-poised state

A state that skews the differentiation potential of T cells towards the tissue resident memory T cell (T_{RM} cell) lineage.

T_{CIRCUM} cell lineage. Furthermore, a combination of single-cell transcriptome analysis and lineage tracing allowed identification of the existence of a circulating effector T cell population that preferentially gives rise to T_{RM} cells and transcriptionally resembles mature T_{RM} cells⁷⁶. These observations argue for a ‘systemic divergence’ model of T_{RM} cell formation, in which the capacity to develop into T_{RM} cells is at least partially driven by lymphoid-derived signals.

Skewed T_{RM} cell production by naive T cells. A ‘systemic divergence’ model of T_{RM} cell differentiation proposes that the propensity to give rise to this lineage of memory cells is at least partially imprinted prior to tissue entry. As T_{RM} cell precursors can already be detected in tissues at an early stage of the T cell response, any systemic imprinting of T_{RM} cell lineage decisions should therefore also occur prior to, or within the first few days following, T cell activation. Importantly, direct evidence that T cells undergo T_{RM} cell fate conditioning/poising prior to substantial antigen-driven expansion has been obtained. Specifically, two studies have shown that naive T cells, either expressing variable⁷⁷ or identical⁷⁶ TCRs, show diversity in their ability to yield T_{RM} cells and T_{CIRCUM} cells. This observed skewing of the progeny of individual T cells to either the T_{RM} cell or T_{CIRCUM} cell lineage can conceptually be explained by differential exposure to signals that allow T_{RM} cell formation by early progeny, or by a gentle ‘nudge’ towards the production of T_{RM} cells that is already received at the naive T cell stage, prior to TCR triggering. Notably, evidence in favour of imprinting both during T cell priming and at the naive T cell stage has been obtained. With respect to the imprinting of T_{RM} cell differentiation capacity during T cell priming, it is becoming increasingly evident that the specific dendritic cell subtypes that interact with T cells within lymphoid tissues can help steer early T_{RM} cell differentiation. For instance, priming of human T cells by CD1c⁺CD163⁺ dendritic cells may preferentially induce T_{RM} cell fate, as suggested by the observation that in vitro activation of naive T cells by CD1c⁺CD163⁺ dendritic cells, but not other dendritic cell subsets, induces the expression of a wide range of T_{RM} cell-associated genes in human T cells, and endows cells with enhanced capacity to accumulate in human epithelial grafts in mice^{78,79}. Furthermore, data obtained in mouse models have demonstrated that only priming by BATF3⁺ dendritic cells, a subgroup of antigen-presenting cells (APCs) that are efficient in antigen cross-presentation, allowed the formation of T_{RM} cells in skin and lung tissue⁸⁰. Interestingly, another study comparing terminal effector T cell versus T_{CIRCUM} cell differentiation in mice demonstrated that priming mediated by BATF3⁺ dendritic cells favours the production of terminal effector T cells and T_{EM} cells over T_{CM} cells, whereas CD11b^{hi} dendritic cells, a subset that is poor at promoting T_{RM} cell differentiation⁸⁰, favoured T_{CM} cell differentiation⁸¹. Although the above data indicate that BATF3⁺ dendritic cells can skew naive T cells towards both the T_{RM} cell lineage and the T_{EM} cell lineage, lineage-tracing data indicate that T_{RM} cells and T_{EM} cells are largely derived from distinct naive T cells⁷⁶. This apparent contradiction may potentially be explained by an unappreciated diversity

in T_{RM}/T_{EM} cell priming abilities within the BATF3⁺ dendritic cell lineage, or by naive T cell intrinsic variation in T_{RM} cell-forming potential. The above data provide solid evidence that the nature of the APCs that induce T cell priming can influence their capacity to differentiate into T_{RM} cells. In addition, evidence for such a ‘sculpting effect’ of dendritic cell encounters in the absence of antigen recognition has also been obtained. Specifically, migratory dendritic cells within lymph nodes have been reported to epigenetically reprogram naive T cells in the absence of inflammation, leading to a T_{RM} cell-poised state that licenses naive T cells to preferentially give rise to skin T_{RM} cells in response to local inflammation⁸².

The relative output of naive T cells towards either the T_{RM} cell or T_{CIRCUM} cell pool after skin inflammation has been shown to be linked to the production of circulating T_{EFF} cells with a T_{RM} cell-like transcriptional signature by the progeny of individual cells⁷⁶. It is plausible that encounter of the above-mentioned T_{RM} cell-biasing dendritic cell subtypes prior to, and during, priming drives the creation of this specialized group of T_{EFF} cells. However, a contribution of signals within NLTs in this process cannot be formally excluded. Specifically, late memory precursor cells that exist in skin 14 days after viral skin infection have been reported to locally receive TGFβ-induced signalling, after which these cells are able to rejoin the circulation⁶⁴. It is presently unknown at what rate T cells egress from inflamed tissues at early stages of the immune response, and it will be of interest to determine whether, and to what extent, signals within NLTs can contribute to the production of the circulating T_{RM} cell-poised T cell pool.

Molecular signals that induce a T_{RM} cell-poised state.

Signals provided by the dendritic cell subtypes described above may imprint an enhanced T_{RM} cell-forming propensity in T cells by promoting two different biological properties. First, dendritic cell-derived signals may prime T cells for T_{RM} cell fate by enhancing the ability of T cells to accumulate in tissues through either increased tissue entry or tissue retention (FIG. 2a); for instance, by driving heightened expression of relevant chemokine receptors^{83,84}, integrins and other adhesion molecules²⁷. Related to this, the observation that enhancement of tissue entry or inhibition of tissue egress increases the T_{RM} cell pool size^{52,85} implies that migration and retention do represent bottlenecks in T_{RM} cell generation. In addition, heightened expression of the chemokine receptors CCR8, CCR10 and CXCR6 by circulating T_{EFF} cell clones responding to skin inflammation is associated with heightened T_{RM} cell formation in the skin⁷⁶. Second, signals provided by dendritic cells may also promote T_{RM} cell lineage decisions by shaping an epigenetic and transcriptional landscape that makes cells commit more readily to the T_{RM} cell lineage upon encounter of signals within the tissue micro-environment (FIG. 2b). Such variable responsiveness to T_{RM} cell-inducing signals within the pool of T_{EFF} cells is exemplified by the observation that exposure to TGFβ can either induce the expression of CD103 or induce apoptosis in some T_{EFF} cells^{56,86}.

Numerous signals within lymphoid tissues have been identified that help skew T cells towards the T_{RM} cell

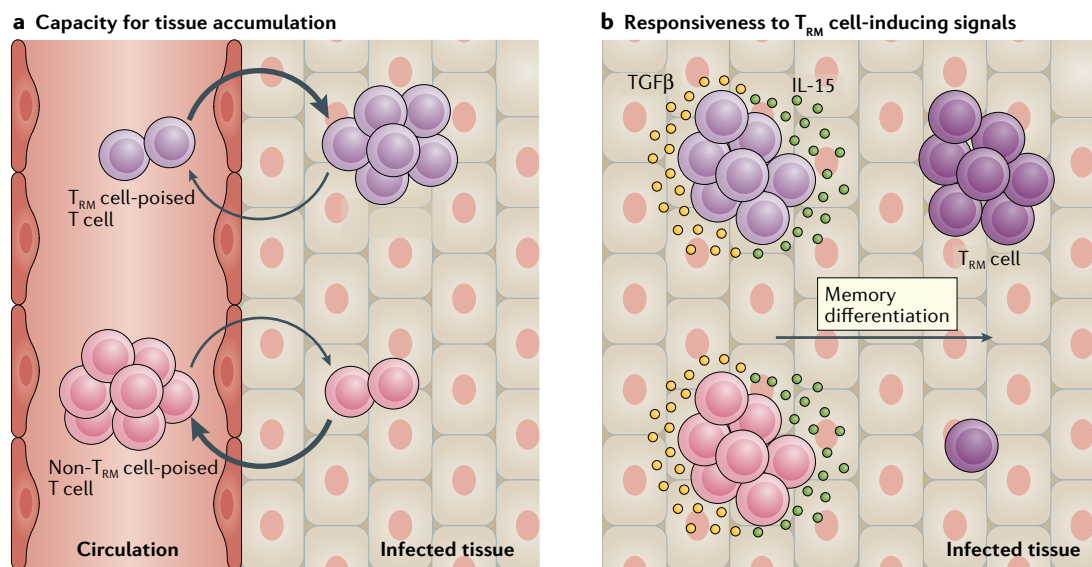


Fig. 2 | Properties of T_{RM} cell-poised T cells. Two properties endow $CD8^+$ tissue resident memory T cell (T_{RM} cell)-poised T cells with an enhanced capacity to form T_{RM} cells. **a** | T_{RM} cell-poised memory precursor cells are more prone to enter non-lymphoid tissues (NLTs) and are well equipped to persist within this tissue, compared with other T cells. **b** | T_{RM} cell-poised memory precursor cells are more sensitive to signals, such as IL-15 and TGF β , that drive T_{RM} cell differentiation within inflamed tissues, and thus more readily give rise to mature T_{RM} cells than other T cells that reach the tissue micro-environment.

lineage through either of the above-mentioned mechanisms. TGF β , an immune modulator that promotes T_{RM} cell formation by acting locally at the tissue site^{64,65}, can also steer T_{RM} cell differentiation within lymphoid tissues, both in the absence and the presence of infection. In the absence of foreign antigen, TGF β activation by migratory dendritic cells in lymph nodes has been shown to induce epigenetic reprogramming of naive T cells, resulting in enhanced accessibility of signature T_{RM} cell genes, such as *Itgae* and *Ccr8*, and to modulate the accessibility of target genes of transcription factors that are involved in T_{RM} cell differentiation⁸². Such TGF β -mediated conditioning of naive T cells was found to be essential for the differentiation of their progeny into T_{RM} cells upon skin infection, but was dispensable for T_{CIRC} cell formation⁸². Notably, this TGF β -dependent poising of naive T cells towards the T_{RM} cell fate is reversible, implying that naive T cells require periodic TGF β signalling to maintain their ability to differentiate into T_{RM} cells. This suggests that naive T cells may vary in their T_{RM} cell-poised state, depending on the level or frequency of prior TGF β encounter, potentially explaining the clonal variation in T_{RM} cell-forming capacity that has been observed^{76,77}. Emerging tools that allow for the parallel determination of the epigenetic state of cells at a particular point in time and assessment of their ultimate fate at a later stage could be of major value to link epigenetic heterogeneity in the naive T cell pool to T_{RM} cell differentiation potential⁸⁷.

In the presence of foreign antigen, TGF β has also been shown to promote the induction of a T_{RM} cell-poised state. Upon TCR-mediated activation, T cells rapidly down-regulate TGF β receptor expression — perhaps to reduce the immunosuppressive effects of TGF β — but regain expression around 24 h later^{88,89}. Borges da Silva et al. have shown that such TGF β receptor re-expression

by T_{EFF} cells in lymphoid tissues of mice is induced by P2RX7, an extracellular receptor that senses ATP. Interestingly, as a result of their insensitivity to TGF β , *P2rx7*^{-/-} early effector T cells in the spleen display diminished *Itgae* and elevated *Eomes* expression⁸⁹, two characteristics that are negatively correlated with a T_{RM} cell-poised state^{14,76}, in line with the diminished T_{RM} cell-forming capacities of these cells. It should be noted that lack of *P2rx7* does not affect TGF β receptor expression on naive T cells, suggesting that the TGF β -mediated T_{RM} cell fate conditioning that occurs prior to antigen encounter remains unaffected. Although the authors demonstrated that the lack of *P2rx7* also negatively influenced the T_{RM} cell pool size within the small intestine^{89,90}, Stark et al. did not observe an effect of *P2rx7* deficiency on T_{RM} cell-forming capacity of T cells within the same tissue.⁹¹ As TGF β signalling is vital for T_{RM} cell differentiation in the gut^{51,68}, mechanisms independent of the ATP-P2RX7 axis may exist that ensure TGF β receptor re-expression.

A role for TGF β in stimulating T_{RM} cell differentiation during priming has also been described for human T cells. Specifically, the preferential induction of a T_{RM} cell-like transcriptome by human $CD11c^+$ dendritic cells marked by CD1c and CD163 expression has been explained by their ability to provide active TGF β during T cell priming^{78,79}. It is noted, however, that an inability of mouse $CD11c^+$ dendritic cells to activate TGF β during T cell priming does not impair mouse skin T_{RM} cell development⁸², suggesting that the TGF β signal that prepares cells for T_{RM} cell fate during priming in mice is provided by another cell source.

The cytokines IL-15 and IL-12, and the co-stimulatory molecule CD24 — three signals provided by $BATF3^+$ dendritic cells during T cell priming — have been shown to be essential for the differentiation of mouse skin and

lung T_{RM} cells, whereas these signals are dispensable for T_{CIRC} cell formation⁸⁰. However, how these signals promote T_{RM} cell programming is less well understood. Similar to TGF β , IL-12 drives the expression of CD49a (*Itga1*), a T_{RM} cell-associated integrin that shows heterogeneous expression in circulating T_{EFF} cells⁹², and of which elevated transcript levels mark T_{EFF} cell clones with heightened capacity to form T_{RM} cells⁷⁶. Although CD49a is not required for the initial establishment of a T_{RM} cell pool in the skin, the expression of this integrin is vital for long-term T_{RM} cell persistence and locomotion^{92,93}. Whether early-stage CD49a expression induced by lymphoid-derived TGF β and IL-12 signalling affects the ability of mature T_{RM} cells to persist in tissues is unclear. Both IL-12 and IL-15 have been shown to drive the activation of the mTORC1 protein complex^{94,95}. This observation may explain the effect of these cytokines on T_{RM} cell formation, as inhibition of mTORC1 activity during T cell priming reduces T_{RM} cell formation due to a reduced ability of T_{EFF} cells to migrate to the gut epithelium and to express CD103, while enhancing their ability to form T_{CIRC} cells^{95–97}. Directly following T cell priming, T cells show variable levels of mTORC1 activity⁹⁸, and it may be proposed that the level of mTORC1 activity may be used to identify T cells biased towards either the T_{RM} cell or T_{CIRC} cell lineage. Although the exact

mechanisms through which mTORC1 steers T_{RM} cell fate decisions are unknown, it is plausible that mTORC1 and other downstream signalling molecules induced by IL-15, IL-12 and CD24 signals mediate T_{RM} cell formation through the induction of molecular networks that also drive terminal effector and T_{EM} cell lineage commitment. Specifically, studies focusing on the formation of circulating T cell subsets have shown that IL-12 (REF.⁹⁹) and CD24 (REF.⁸¹), provided by priming dendritic cells, and elevated T cell intrinsic mTORC1 activity⁹⁸ strongly favour terminal effector and T_{EM} cell differentiation over T_{CM} cell differentiation, suggesting substantial parallels between creation of the T_{RM} cells and the terminally differentiated T cell lineages. Nevertheless, T_{RM} cells display a significant level of multipotency³², highlighting that these cells cannot be considered terminally differentiated. T_{CM} cell precursors are protected from terminal differentiation by the anti-inflammatory cytokine IL-10, which reduces their sensitivity and exposure to inflammatory stimuli¹⁰⁰. By analogy, it may be speculated that periodic TGF β signalling in lymphoid tissues could ‘rescue’ T_{RM} cell-poised T_{EFF} cells from terminal differentiation. In such a model, T_{RM} cell-forming potential is coupled to the prevention of terminal differentiation of cells that would otherwise contribute to the T_{EM} cell and terminal effector cell pools (FIG. 3).

In addition to cytokines and co-stimulatory signals, metabolites that are synthesized in processes mediated by dendritic cells also play a major role in promoting T_{RM} cell formation, by driving the expression of tissue homing molecules. Specifically, work over the past years has demonstrated that the expression of certain homing markers on T cells is influenced by the route of pathogen entry into the body^{64,101–103} and that this effect is, at least partly, due to a variation in availability of molecular compounds that can be processed by dendritic cells at different lymphoid tissue sites. For example, dendritic cells can metabolize vitamin D3 — a compound that is abundantly present in the skin — into its active form, and this metabolite suppresses the gut-homing programme in T cells, at the same time as inducing the expression of the chemokine receptor CCR10 that allows skin homing¹⁰⁴. Vice versa, dendritic cells located in gut-associated lymphoid tissue can convert vitamin A into retinoic acid, thereby driving T cell expression of the gut-homing molecules CCR9 and $\alpha 4\beta 7$ (REFS^{105,106}). Collectively, these data illustrate that the differential encounter of cytokines, co-stimulatory molecules and metabolites within lymphoid tissues can induce a bias with regards to the T_{RM} cell-forming potential within the T_{EFF} cell pool (FIG. 3). In addition, the idea that the molecular signals present at various priming sites can differentially affect the nature of T_{RM} cell-poised T cells implies that recently activated T cells are not primed as a ‘universal’ T_{RM} cell precursor but are primed to form T_{RM} cells at specific anatomical sites.

Transcriptional regulation

Although it is clear that T cells can undergo conditioning that increases their potency to develop into T_{RM} cells at very early stages of the immune response, while still located in lymphoid tissues^{80,82,96}, the transcriptional

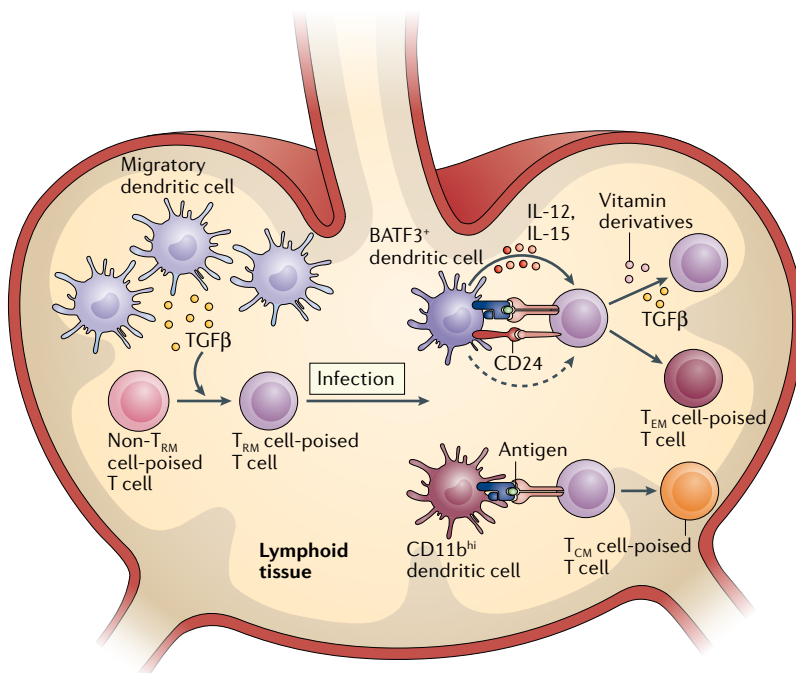


Fig. 3 | Signals within lymphoid tissues that poise T cells towards T_{RM} cell development. Overview of signals within lymphoid tissues that affect the ability of T cells to form CD8⁺ tissue resident memory T cells (T_{RM} cells) in mouse models. Prior to antigen encounter, naive T cells require periodic TGF β signalling to adopt and retain a T_{RM} cell-poised state. Upon infection, priming by BATF3⁺ dendritic cells, which provide IL-15, IL-12 and CD24 signalling, biases T cells to form T_{RM} cells. Presence of tissue-derived factors, such as derivatives of vitamin A and vitamin D, during priming can stimulate the expression of tissue-specific homing molecules, thereby guiding T_{RM} cell-poised T cells to the relevant affected tissues. The presence of TGF β during priming further maintains the T_{RM} cell-poised state, and it may be proposed that in the absence of TGF β , T cells primed by BATF3⁺ dendritic cells are prone to give rise to the CD8⁺ effector memory T cell (T_{EM} cell) and terminal effector T cell lineages. T_{CM} cell, CD8⁺ central memory T cell.

programmes that underpin this heightened potential have not been identified. Notably, multiple transcription factors have been described that coordinate the development of T_{RM} cells, and to better understand how T_{RM} cell lineage conditioning is regulated within lymphoid tissues, it is useful to examine whether the transcription factors that are known to affect T_{RM} cell development could be regulating T_{RM} cell differentiation already prior to tissue infiltration.

T-bet (encoded by *Tbx21*), EOMES (Eomesodermin, encoded by *Eomes*) and TCF1 (encoded by *Tcf7*) are transcription factors that are abundantly expressed by subsets of circulating T cells but are not or are only minimally expressed by T_{RM} cells in NLTs^{17,52,62,107}. Early poisoning towards T_{RM} cell fate is associated with the expression of T-bet⁸⁰, and mature T_{RM} cells also require low-level T-bet expression to allow IL-15 receptor cell surface expression^{62,108}. However, higher levels of T-bet negatively affect TGF β receptor expression and, hence, the ability of T cells to form CD103⁺ T_{RM} cells^{62,109,110}. Similarly, EOMES is essential for T_{CIRCUM} cell formation^{108,111} but also counteracts the generation of T_{RM} cells by reducing the expression of the TGF β receptor⁶². TCF1 is a transcriptional regulator that coordinates early fate decisions in response to both acute¹¹² and chronic^{113,114} infections. It can block TGF β -induced CD103 expression through direct interaction with the *Itgae* locus, and ablation of this transcription factor enhances the formation of lung T_{RM} cells in mouse models¹¹⁵. The observation that circulating T_{EFF} cell clones poised for T_{RM} cell fate display diminished expression of these three transcription factors⁷⁶ suggests that the levels of T-bet, EOMES and TCF1 may control early-stage T_{RM} cell lineage decisions within the lymphoid compartment. As a side note, TGF β signalling suppresses the expression of these three transcription factors^{62,115}, and IL-12 signalling can induce transcriptional repression of both *Eomes* and *Tcf-7* (REFS^{94,116,117}). In humans, evidence for the existence of a circulating pool of T_{RM} cell-poised T_{EFF} cells, marked by diminished expression of the aforementioned transcription factors as observed in mice⁷⁶, is currently lacking. However, data sets describing single-cell gene or protein expression of large numbers of CD8⁺ T cells in the blood of human subjects who have been recently infected or vaccinated could serve as valuable resources to study their presence^{118–120}. Mathew et al. described a pool of cycling EOMES^{low}TBET^{low}TCF1^{low} T cells that were enriched in individuals infected with SARS-CoV-2, compared with healthy individuals or individuals who have recovered from COVID-19 (REF.¹¹⁹). To test whether this CD8⁺ T cell population harbours heightened T_{RM} cell-forming capacity in humans, it would be interesting to match the TCR repertoire of this cell pool to that of other blood-derived T_{EFF} cell subsets and to the TCR repertoire of mature T_{RM} cells derived from tissue biopsies.

In addition to the transcription factors that repress T_{RM} cell differentiation, numerous transcriptional regulators including RUNX3, BLIMP1 and its homologue HOBIT, BHLHE40, and NR4A1 have been shown to positively influence T_{RM} cell formation. Although RUNX3 has also been shown to promote T_{CIRCUM} cell

generation, ablation of RUNX3 affects the T_{RM} cell pool more severely than the T_{CIRCUM} cell pool^{49,121}. Additional evidence for a dominant role of RUNX3 in the generation of the T_{RM} cell subset over the T_{CIRCUM} cell pool comes from the observations that T_{EFF} cells in tissues display increased expression of RUNX3 compared with circulating T_{EFF} cells⁴⁸, and that forced expression of RUNX3 in activated T cells results in increased expression of core T_{RM} cell signature genes and decreased expression of T_{CIRCUM} cell-related genes⁴⁹. As RUNX3 has been shown to influence gene expression in recently primed T cells¹²¹, it is plausible that RUNX3 already aids T_{RM} cell formation at a very early stage of the immune response, prior to tissue entry.

BLIMP1 promotes T_{RM} cell formation in various tissues, in part by directly suppressing the expression of *Tcf7* as well as by suppressing *Klf2*, *Ccr7* and *Slpr1*⁷⁴, genes that encode proteins that promote tissue egress, thereby inhibiting the formation of the T_{CM} cell lineage⁷³. Although genetic deletion of *Blimp1* diminishes T_{RM} cell formation in the lung, it does not affect the number of T_{RM} cells in the gut and skin, potentially due to activity of the BLIMP1 homologue HOBIT, which shares the ability to suppress the expression of tissue egress-promoting genes⁷⁴. However, gut T_{RM} cells that do form in the absence of BLIMP1 are defective in granzyme B production¹²², highlighting that BLIMP1 is important to support the acquisition of some aspects of T_{RM} cell function. With respect to a potential role of BLIMP1 in determining T_{RM} cell fate in the circulating T cell pool, we note that circulating T_{EFF} cell clones with enhanced T_{RM} cell-forming capacity are marked by elevated transcript levels of *Gzmb*, which encodes granzyme B, relative to other memory precursor cells⁷⁶. As BLIMP1 is an essential driver of *Gzmb* expression within the circulating T_{EFF} cell pool^{122,123}, this relationship may conceivably reflect a moulding of the circulating T_{EFF} cell population into a T_{RM} cell-poised state by BLIMP1. In support of this hypothesis, dendritic cell-derived IL-15 and IL-12 within lymphoid tissues are required to induce a T_{RM} cell-poised state⁸⁰ and these signals are also known drivers of BLIMP1 expression in early effector T cells^{95,123}. Within the mouse CD8⁺ T cell lineage, *Hobit* is highly expressed by T_{RM} cells, but not or only minimally by T_{CM} cells and T_{EM} cells^{74,124}. Whether circulating mouse effector T cells at any stage express HOBIT has not been reported. On the other hand, abundant expression of HOBIT has been described in circulating human effector-like T cells^{17,125–127}, but unlike in mouse T_{RM} cells, HOBIT does not prominently mark human T_{RM} cells^{17,128}. Thus, whether HOBIT plays a role in both mouse and human T_{RM} cell formation prior to tissue entry remains undefined.

Marked expression of the transcriptional regulators BHLHE40 and NR4A1 has been observed in T_{EFF} cells in tissues and in mature T_{RM} cells in both mice and humans, and genetic deletion of these factors selectively hinders the formation of T_{RM} cells in mice^{49,129,130}. In addition, NR4A1 expression has been reported within the circulating pool of CD8⁺ T_{EFF} cells, where it functions as a suppressor of cell division and effector differentiation^{131–133}. BHLHE40 expression has been observed within the pool

of effector CD4⁺ T cells^{134,135}, but BHLHE40 expression by circulating CD8⁺ T_{EFF} cells is less well described. More research is required to investigate whether BHLHE40 and NR4A1 are involved in T_{RM} cell lineage decisions within lymphoid tissues or selectively act once T cells have seeded affected tissues.

Although differential expression of transcription factors, such as T-bet and RUNX3, is likely to form a major driver of T_{RM} cell lineage divergence, target gene accessibility is thought to represent a second layer of control. T_{RM} cells are characterized by a distinct epigenetic state as compared with T_{EM} cells and T_{CM} cells^{25,31,32,38}, and differences in the epigenetic landscape are already apparent at the T_{RM} precursor cell stage. For instance, a distinct set of RUNX3 target genes are accessible in T_{EFF} cells localized in the gut epithelium and in the spleen of lymphocytic choriomeningitis virus (LCMV)-infected mice⁴⁹. Notably, an enhanced RUNX3 target gene accessibility has been described in T_{RM} cell-poised naive T cells, coinciding with a reduced accessibility of T-box target genes⁸². Furthermore, RUNX3 has been reported to induce global chromatin changes shortly after T cell activation, enhancing accessibility of BLIMP1 target sites and also inducing BLIMP1 expression¹²¹. Together, these data suggest a mechanism for early T_{RM} cell lineage poising that relies on both the expression of certain transcriptional regulators and the increased accessibility of their target genes.

T_{RM} cell precursors during reinfection

The data described above document the existence of circulating T cells that are poised to give rise to T_{RM} cells after a primary infection. Remarkably, recent studies have uncovered that a similar population can also be detected upon recurring infection; however, these cells have a different origin. Upon local reinfection, T_{RM} cells can proliferate — and whereas part of the offspring remain at

the tissue site^{136,137}, some of these cells may leave the tissue site. In addition to the observation that such ‘ex-NLT’ T_{RM} cell offspring can take up permanent residence in tissue draining lymph nodes^{30,138}, a recent study revealed that skin T_{RM} cell-derived T_{EFF} cells that are marked by the T_{RM} cell-associated proteins CD103 and CD49a can be detected within the circulation³². Furthermore, it was shown that the offspring of intravenously transferred T_{RM} cells possesses a high propensity to home to the tissue of origin and to again differentiate into resident memory cells upon infection. Combined, these observations suggest that T_{RM} cell-derived offspring that naturally egress from tissues may also be primed to again form T_{RM} cells³². Evidence that T_{RM} cells can produce circulating offspring that possess a heightened potential to again form T_{RM} cells has also been obtained in two other studies. Work by Behr et al. demonstrated that gut-derived T_{RM} cells that were engrafted into liver tissue produced circulating T_{EFF} cells upon LCMV infection, which preferentially formed T_{RM} cells in gut tissue¹²⁴. Furthermore, Klicznik et al. demonstrated that CD4⁺ tissue resident memory T cells derived from human skin xenografts can egress from the tissue, form CD103⁺ circulating T cells and, subsequently, form tissue resident memory T cells at distant skin tissue sites¹³⁹. It has not been resolved which factors drive the re-entry of a selection of T_{RM} cell-derived offspring into the circulation. Conceivably, the type or activation state of the APCs encountered locally could play a critical role in this process, as distinct types of APCs can differentially affect the gene expression profile of activated T_{RM} cells, including genes involved in tissue egress¹⁴⁰.

Concluding remarks

It has become increasingly clear that cues within lymphoid tissues can condition T cells, at the level of both naive and early effector T cells, to preferentially develop into T_{RM} cells, and the presence of T_{RM} cell-poised T cells within the circulating memory precursor cell pool reflects the result of these processes (FIG. 4). It is of interest to note that evidence supporting the existence of a circulating precursor population in lymphoid organs that has an increased propensity to take up residence in NLTs is not restricted to the CD8⁺ T cell compartment. Specifically, recent work has revealed the existence of CD4⁺ regulatory T cells within lymphoid tissues that epigenetically and transcriptionally resemble regulatory T cells within NLTs, and such cells are fated to traffic to NLTs and, subsequently, take up residency in peripheral tissue^{141–143}. As the molecular mechanisms used to instruct a ‘tissue fate’ in different subsets of circulating leukocytes are likely to share common themes, the parallel study of residency promoting and inhibiting programmes in different cell subsets may be attractive.

The processes that are involved in the creation of the circulating T_{RM} cell-poised T cell pool will, at least partly, differ depending on the route of infection. Specifically, a number of the molecular and cellular cues that induce a T_{RM} cell-poised state within lymphoid tissues find their origin in the associated NLTs (for example, CD103⁺ migratory dendritic cells, vitamin D, vitamin A)^{80,82,144}. The importance of such crosstalk may also be reflected

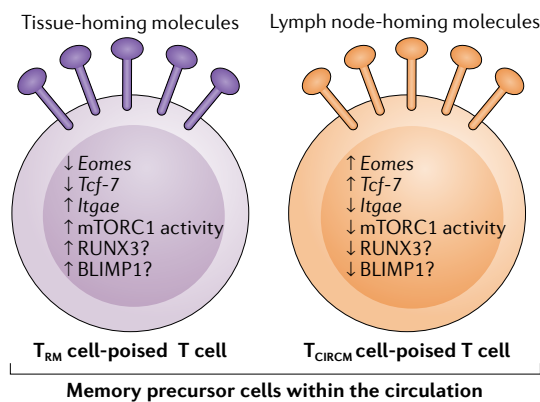


Fig. 4 | Distinguishing characteristics of T_{RM} cell-poised memory precursor cells within the circulation.

Circulating CD8⁺ tissue resident memory T cell (T_{RM} cell)-poised and CD8⁺ circulating memory T cell (T_{CIRC} cell)-poised memory precursor T cells share the classical memory precursor phenotype IL-7Rα^{hi}KLRC1^{low}. However, numerous other properties could be used to distinguish the two groups of memory precursor cells^{76,82,89,96}. Arrows depict the relative level of activity or expression. Data on BLIMP1 and RUNX3 are indirect.

by the fact that no T cells that transcriptionally mimic T_{RM} cells were detectable within the circulating T_{EFF} cell pool after systemic LCMV infection⁴⁸. It should be noted, however, that T_{RM} cells do form in various NLTs following systemic LCMV infection, indicating that although tissue-derived signals present at the priming site may promote T_{RM} cell formation, such signals are not always essential. In future work, it will be valuable to compare the formation of, and properties of, circulating T_{RM} cell precursors in response to local infections at different tissue sites, to better understand the role of different tissue cues in the creation of this cell pool.

As a final area of future research, our current understanding of T_{RM} cell fate conditioning within lymphoid tissues is predominantly based on work that tests the contribution of individual signals at a particular point in time, through the use of mouse models that are deficient in such signals. It will be attractive to complement this type of perturbation studies with studies that record the signals that cells receive, to test which signals are most predictive of future cell fate. Although a comprehensive monitoring of signalling events and subsequent changes

in epigenetic and transcriptional states is unlikely to become feasible in the coming years, numerous previously established or recently developed tools will be valuable for this purpose. Specifically, methods that record — preferably quantitatively — the historic exposure to external signals, such as CRISPR-based approaches that induce genomic modifications upon the reception of a signal of interest¹⁴⁵, are likely to serve as a useful approach to monitor the relationship between early signals and subsequent T_{RM} cell formation. Similarly, the use of reporter systems in which the expression of genes of interest leads to stable genetic or protein marks^{75,124} could provide insights into the gene expression profile that marks T_{RM} cell precursors before they reach the tissue site. Finally, a recently developed transposon-based tool that ‘immortalizes’ the pattern of historic interactions of transcription factors with available DNA target sites⁸⁷ may be of significant value to the epigenetic state of early effector T cells to the memory T cell state they assume later on.

Published online 3 September 2021

- Obar, J. J., Khanna, K. M. & Lefrançois, L. Endogenous naive CD8⁺ T cell precursor frequency regulates primary and memory responses to infection. *Immunity* **28**, 859–869 (2008).
- Abdelsamed, H. A., Zebley, C. C. & Youngblood, B. Epigenetic maintenance of acquired gene expression programs during memory CD8 T cell homeostasis. *Front. Immunol.* **9**, 6 (2018).
- Jameson, S. C. & Masopust, D. Understanding subset diversity in T cell memory. *Immunity* **48**, 214–226 (2018).
- Gattinoni, L. et al. A human memory T cell subset with stem cell-like properties. *Nat. Med.* **17**, 1290–1297 (2011).
- Olson, J. A., McDonald-Hyman, C., Jameson, S. C. & Hamilton, S. E. Effector-like CD8⁺ T cells in the memory population mediate potent protective. *Immunity* **38**, 1250–1260 (2013).
- Gerlach, C. et al. The chemokine receptor CX3CR1 defines three antigen-experienced CD8 T cell subsets with distinct roles in immune surveillance and homeostasis. *Immunity* **45**, 1270–1284 (2016).
- Osborn, J. F. et al. Enzymatic synthesis of core 2 O-glycans governs the tissue-trafficking potential of memory CD8⁺ T cells. *Sci. Immunol.* **2**, eaan6049 (2017).
- Buggert, M. et al. The identity of human tissue-emigrant CD8⁺ T cells. *Cell* **183**, 1946–1961.e15 (2020).
- Thome, J. J. C. et al. Spatial map of human T cell compartmentalization and maintenance over decades of life. *Cell* **159**, 814–828 (2014).
- Dijkgraaf, F. E. et al. Tissue patrol by resident memory CD8⁺ T cells in human skin. *Nat. Immunol.* **20**, 756–764 (2019).
- Ariotti, S. et al. Tissue-resident memory CD8⁺ T cells continuously patrol skin epithelia to quickly recognize local antigen. *Proc. Natl Acad. Sci. USA* **109**, 19739–19744 (2012).
- Ariotti, S. et al. Skin-resident memory CD8⁺ T cells trigger a state of tissue-wide pathogen alert. *Science* **346**, 101–105 (2014).
- Schenkel, J. M. et al. Resident memory CD8 T cells trigger protective innate and adaptive immune responses. *Science* **346**, 98–101 (2014).
- Pan, Y. et al. Survival of tissue-resident memory T cells requires exogenous lipid uptake and metabolism. *Nature* **543**, 252–256 (2017).
- Masopust, D., Vezys, V., Wherry, E. J., Barber, D. L. & Ahmed, R. Cutting edge: gut microenvironment promotes differentiation of a unique memory CD8 T cell population. *J. Immunol.* **176**, 2079–2083 (2006).
- Hoekstra, M. E., Vijver, S. V. & Schumacher, T. N. Modulation of the tumor micro-environment by CD8⁺ T cell-derived cytokines. *Curr. Opin. Immunol.* **69**, 65–71 (2021).
- Hombrink, P. et al. Programs for the persistence, vigilance and control of human CD8⁺ lung-resident memory T cells. *Nat. Immunol.* **17**, 1467–1478 (2016).
- Yang, Q. et al. Cutting edge: characterization of human tissue-resident memory T cells at different infection sites in patients with tuberculosis. *J. Immunol.* <https://doi.org/10.4049/jimmunol.1901326> (2020).
- Steinbach, K. et al. Brain-resident memory T cells represent an autonomous cytotoxic barrier to viral infection. *J. Exp. Med.* **213**, 1571–1587 (2016).
- Kiniry, B. E. et al. Predominance of weakly cytotoxic, Tbet^{low}Eomes^{high} CD8⁺ T cells in human gastrointestinal mucosa: implications for HIV infection. *Mucosal Immunol.* **10**, 1008–1020 (2017).
- Kiniry, B. E. et al. Differential expression of CD8⁺ T cell cytotoxic effector molecules in blood and gastrointestinal mucosa in HIV-1 infection. *J. Immunol.* <https://doi.org/10.4049/jimmunol.1701532> (2018).
- Seidel, J. A. et al. Skin resident memory CD8⁺ T cells are phenotypically and functionally distinct from circulating populations and lack immediate cytotoxic function: phenotype and function of cutaneous T cells. *Clin. Exp. Immunol.* **194**, 79–92 (2018).
- Smolders, J. et al. Tissue-resident memory T cells populate the human brain. *Nat. Commun.* **9**, 4593 (2018).
- Frizzell, H. et al. Organ-specific isoform selection of fatty acid-binding proteins in tissue-resident lymphocytes. *Sci. Immunol.* **5**, eaay9283 (2020).
- Hayward, S. L. et al. Environmental cues regulate epigenetic reprogramming of airway-resident memory CD8⁺ T cells. *Nat. Immunol.* **21**, 309–320 (2020).
- Skon, C. N. et al. Transcriptional downregulation of S1pr1 is required for the establishment of resident memory CD8⁺ T cells. *Nat. Immunol.* **14**, 1285–1293 (2013).
- Mueller, S. N. & Mackay, L. K. Tissue-resident memory T cells: local specialists in immune defence. *Nat. Rev. Immunol.* **16**, 79–89 (2016).
- Walsh, D. A. et al. The functional requirement for CD69 in establishment of resident memory CD8⁺ T cells varies with tissue location. *J. Immunol.* **203**, 946–955 (2019).
- Steinert, E. M. et al. Quantifying memory CD8 T cells reveals regionalization of immunosurveillance. *Cell* **161**, 737–749 (2015).
- Beura, L. K. et al. T cells in nonlymphoid tissues give rise to lymph-node-resident memory T cells. *Immunity* **48**, 327–338.e5 (2018).
- Buggert, M. et al. Identification and characterization of HIV-specific resident memory CD8⁺ T cells in human lymphoid tissue. *Sci. Immunol.* **3**, eaar4526 (2018).
- Fonseca, R. et al. Developmental plasticity allows outside-in immune responses by resident memory T cells. *Nat. Immunol.* **21**, 412–421 (2020). **This study shows that T_{RM} cells can rejoin the circulation upon activation, while preserving a T_{RM} cell-like phenotype and a high propensity to again form T_{RM} cells.**
- Jiang, X. et al. Skin infection generates non-migratory memory CD8⁺ TRM cells providing global skin immunity. *Nature* **483**, 227–231 (2012).
- Gebhardt, T. et al. Memory T cells in nonlymphoid tissue that provide enhanced local immunity during infection with herpes simplex virus. *Nat. Immunol.* **10**, 524–530 (2009).
- Enamorado, M. et al. Enhanced anti-tumour immunity requires the interplay between resident and circulating memory CD8⁺ T cells. *Nat. Commun.* **8**, 16073 (2017).
- Park, S. L. et al. Tissue-resident memory CD8⁺ T cells promote melanoma-immune equilibrium in skin. *Nature* **565**, 366–371 (2019).
- Strickley, J. D. et al. Immunity to commensal papillomaviruses protects against skin cancer. *Nature* **575**, 519–522 (2019).
- Clarke, J. et al. Single-cell transcriptomic analysis of tissue-resident memory T cells in human lung cancer. *J. Exp. Med.* **216**, 2128–2149 (2019).
- Kathleen Cuninghame Foundation Consortium for Research into Familial Breast Cancer (kConFab) et al. Single-cell profiling of breast cancer T cells reveals a tissue-resident memory subset associated with improved prognosis. *Nat. Med.* **24**, 986–993 (2018).
- Luoma, A. M. et al. Molecular pathways of colon inflammation induced by cancer immunotherapy. *Cell* **182**, 655–671.e22 (2020).
- Richmond, J. M. et al. Antibody blockade of IL-15 signaling has the potential to durably reverse vitiligo. *Sci. Transl. Med.* **10**, eaam7710 (2018).
- Kurihara, K., Fujiyama, T., Phadungsaksawasdi, P., Ito, T. & Tokura, Y. Significance of IL-17A-producing CD8⁺CD103⁺ skin resident memory T cells in psoriasis lesion and their possible relationship to clinical course. *J. Dermatol. Sci.* **95**, 21–27 (2019).
- Gallais Sérézal, I. et al. A skewed pool of resident T cells triggers psoriasis-associated tissue responses in never-lesional skin from patients with psoriasis. *J. Allergy Clin. Immunol.* **143**, 1444–1454 (2019).
- Clark, R. A. Resident memory T cells in human health and disease. *Sci. Transl. Med.* **7**, 269rv1–269rv1 (2015).
- de Leur, K. et al. Characterization of donor and recipient CD8⁺ tissue-resident memory T cells in transplant nephrectomies. *Sci. Rep.* **9**, 5984 (2019).
- Dijkgraaf, F. E., Kok, L. & Schumacher, T. N. M. Formation of tissue-resident CD8⁺ T cell memory. *Cold Spring Harb. Perspect. Biol.* <https://doi.org/10.1101/cshperspect.a038117> (2021).

47. Masopust, D. et al. Dynamic T cell migration program provides resident memory within intestinal epithelium. *J. Exp. Med.* **207**, 553–564 (2010).
48. Kurd, N. S. et al. Early precursors and molecular determinants of tissue-resident memory CD8⁺ T lymphocytes revealed by single-cell RNA sequencing. *Sci. Immunol.* **5**, eaaz6894 (2020). **This work, through single-cell transcriptome sequencing of CD8⁺ T cells in the spleen and gut responding to LCMV infection, delineates the transcriptional differences between T cells in the spleen and the gut, and between T cells within these organs at different stages of the immune response.**
49. Milner, J. J. et al. Runx3 programs CD8⁺ T cell residency in non-lymphoid tissues and tumours. *Nature* **552**, 253–257 (2017).
50. Kaech, S. M. & Cui, W. Transcriptional control of effector and memory CD8⁺ T cell differentiation. *Nat. Rev. Immunol.* **12**, 749–761 (2012).
51. Sheridan, B. S. et al. Oral infection drives a distinct population of intestinal resident memory CD8⁺ T cells with enhanced protective function. *Immunity* **40**, 747–757 (2014).
52. Mackay, L. K. et al. The developmental pathway for CD103⁺CD8⁺ tissue-resident memory T cells of skin. *Nat. Immunol.* **14**, 1294–1301 (2013).
53. Milner, J. J. et al. Heterogenous populations of tissue-resident CD8⁺ T cells are generated in response to infection and malignancy. *Immunity* **52**, 808–824. e7 (2020).
54. Gray, S. M., Amezcua, R. A., Guan, T., Kleinstein, S. H. & Kaech, S. M. Polycomb repressive complex 2-mediated chromatin repression guides effector CD8⁺ T cell terminal differentiation and loss of multipotency. *Immunity* **46**, 596–608 (2017).
55. Kakaradov, B. et al. Early transcriptional and epigenetic regulation of CD8⁺ T cell differentiation revealed by single-cell RNA sequencing. *Nat. Immunol.* **18**, 422–432 (2017).
56. Muschawek, A. et al. Antigen-dependent competition shapes the local repertoire of tissue-resident memory CD8⁺ T cells. *J. Exp. Med.* **213**, 3075–3086 (2016).
57. Wakim, L. M., Smith, J., Caminschi, I., Lahoud, M. H. & Villadangos, J. A. Antibody-targeted vaccination to lung dendritic cells generates tissue-resident memory CD8⁺ T cells that are highly protective against influenza virus infection. *Mucosal Immunol.* **8**, 1060–1071 (2015).
58. Khan, T. N., Mooster, J. L., Kilgore, A. M., Osborn, J. F. & Nolz, J. C. Local antigen in nonlymphoid tissue promotes resident memory CD8⁺ T cell formation during viral infection. *J. Exp. Med.* **213**, 951–966 (2016).
59. Lauron, E. J. et al. Viral MHC1 inhibition evades tissue-resident memory T cell formation and responses. *J. Exp. Med.* **216**, 117–132 (2019).
60. McMaster, S. R. et al. Pulmonary antigen encounter regulates the establishment of tissue-resident CD8 memory T cells in the lung airways and parenchyma. *Mucosal Immunol.* **11**, 1071–1078 (2018).
61. Adachi, T. et al. Hair follicle-derived IL-7 and IL-15 mediate skin-resident memory T cell homeostasis and lymphoma. *Nat. Med.* **21**, 1272–1279 (2015).
62. Mackay, L. K. et al. T-box transcription factors combine with the cytokines TGF- β and IL-15 to control tissue-resident memory T cell fate. *Immunity* **43**, 1101–1111 (2015).
63. McGill, J., Van Rooijen, N. & Legge, K. L. IL-15 trans-presentation by pulmonary dendritic cells promotes effector CD8 T cell survival during influenza virus infection. *J. Exp. Med.* **207**, 521–534 (2010).
64. Hirai, T. et al. Keratinocyte-mediated activation of the cytokine TGF- β maintains skin recirculating memory CD8⁺ T cells. *Immunity* **50**, 1249–1261. e5 (2019). **This work demonstrates that circulating memory T cells can migrate through the skin and that the persistence of these cells is mediated by TGF β in the skin, indicative that signals in NLTs can shape the circulating T cell pool.**
65. Mohammed, J. et al. Stromal cells control the epithelial residence of DCs and memory T cells by regulated activation of TGF- β . *Nat. Immunol.* **17**, 414–421 (2016).
66. Casey, K. A. et al. Antigen-independent differentiation and maintenance of effector-like resident memory T cells in tissues. *J. Immunol.* **188**, 4866–4875 (2012).
67. Nath, A. P. et al. Comparative analysis reveals a role for TGF- β in shaping the residency-related transcriptional signature in tissue-resident memory CD8⁺ T cells. *PLoS ONE* **14**, e0210495 (2019).
68. Zhang, N. & Bevan, M. J. Transforming growth factor- β signaling controls the formation and maintenance of gut-resident memory T cells by regulating migration and retention. *Immunity* **39**, 687–696 (2013).
69. McLaren, J. E. et al. IL-33 augments virus-specific memory T cell inflation and potentiates the efficacy of an attenuated cytomegalovirus-based vaccine. *J. Immunol.* **202**, 943–955 (2019).
70. Ren, H. M. et al. IL-21 from high-affinity CD4 T cells drives differentiation of brain-resident CD8 T cells during persistent viral infection. *Sci. Immunol.* **5**, eaab5590 (2020).
71. Pizzolla, A. et al. Resident memory CD8⁺ T cells in the upper respiratory tract prevent pulmonary influenza virus infection. *Sci. Immunol.* **2**, eaam6970 (2017).
72. Schenkel, J. M. et al. IL-15-independent maintenance of tissue-resident and boosted effector memory CD8 T cells. *J. Immunol.* **196**, 3920–3926 (2016).
73. Behr, F. M. et al. Blimp-1 rather than hobit drives the formation of tissue-resident memory CD8⁺ T cells in the lungs. *Front. Immunol.* **10**, 400 (2019).
74. Mackay, L. K. et al. Hobit and Blimp1 instruct a universal transcriptional program of tissue residency in lymphocytes. *Science* **352**, 459–463 (2016).
75. Hernler-Brandstetter, D. et al. KLRG1⁺ effector CD8⁺ T cells lose KLRG1, differentiate into all memory T cell lineages, and convey enhanced protective immunity. *Immunity* **48**, 716–729. e8 (2018).
76. Kok, L. et al. A committed tissue-resident memory T cell precursor within the circulating CD8⁺ effector T cell pool. *J. Exp. Med.* **217**, e20191711 (2020). **This study, through a combination of lineage tracing and single-cell transcriptomics, reveals the existence of circulating effector T cells that display transcriptomic features of mature T_{RM} cells and that possess a heightened potential to form T_{RM} cells in mouse skin.**
77. Gaide, O. et al. Common clonal origin of central and resident memory T cells following skin immunization. *Nat. Med.* **21**, 647–653 (2015).
78. Yu, C. I. et al. Human CD1c⁺ dendritic cells drive the differentiation of CD103⁺CD8⁺ mucosal effector T cells via the cytokine TGF- β . *Immunity* **38**, 818–830 (2013).
79. Bourdeley, P. et al. Transcriptional and functional analysis of CD1c⁺ human dendritic cells identifies a CD163⁺ subset priming CD8⁺CD103⁺ T cells. *Immunity* **53**, 335–352. e8 (2020). **This study describes a novel human dendritic cell subset, marked by CD1c and CD163 expression, that upon naive T cell priming drives the acquisition of phenotypic and transcriptomic features of human T_{RM} cells by recently activated T cells.**
80. Iborra, S. et al. Optimal generation of tissue-resident but not circulating memory T cells during viral infection requires crosspriming by DNCR-1⁺ dendritic cells. *Immunity* **45**, 847–860 (2016). **This work demonstrates that priming of naive T cells by BATF3⁺ dendritic cells selectively allows the formation of T_{RM} cells in skin and lung tissue in mouse models, and that this process is dependent on IL-15, IL-12 and CD24.**
81. Kim, T. S., Gorski, S. A., Hahn, S., Murphy, K. M. & Braciale, T. J. Distinct dendritic cell subsets dictate the fate decision between effector and memory CD8⁺ T cell differentiation by a CD24-dependent mechanism. *Immunity* **40**, 400–413 (2014).
82. Mani, V. et al. Migratory DCs activate TGF- β to precondition naive CD8⁺ T cells for tissue-resident memory fate. *Science* **366**, eaav5728 (2019). **This work demonstrates that under steady-state conditions, TGF β activated by dendritic cells epigenetically conditions naive T cells, which in turn allows naive T cells to develop into T_{RM} cells when responding to infection.**
83. Zaid, A. et al. Chemokine receptor-dependent control of skin tissue-resident memory T cell formation. *J. Immunol.* **199**, 2451–2459 (2017).
84. Wein, A. N. et al. CXCR6 regulates localization of tissue-resident memory CD8 T cells to the airways. *J. Exp. Med.* **216**, 2748–2762 (2019).
85. Ma, C., Mishra, S., Demel, E. L., Liu, Y. & Zhang, N. TGF- β controls the formation of kidney-resident T cells via promoting effector T cell extravasation. *J. Immunol.* **198**, 749–756 (2017).
86. Sanjabi, S., Mosaheb, M. M. & Flavell, R. A. Opposing effects of TGF- β and IL-15 cytokines control the number of short-lived effector CD8⁺ T cells. *Immunity* **31**, 131–144 (2009).
87. Cammack, A. J. et al. A viral toolkit for recording transcription factor–DNA interactions in live mouse tissues. *Proc. Natl Acad. Sci. USA* **117**, 10003–10014 (2020).
88. Tu, E. et al. T cell receptor-regulated TGF- β type I receptor expression determines T cell quiescence and activation. *Immunity* **48**, 745–759. e6 (2018).
89. Borges da Silva, H. et al. Sensing of ATP via the purinergic receptor P2RX7 promotes CD8⁺ T_{RM} cell generation by enhancing their sensitivity to the cytokine TGF- β . *Immunity* **53**, 158–171. e6 (2020). **This work, through the use of a P2rx7-deficient mouse model, shows that P2RX7 is required for TGF β receptor expression by effector T cells, which in turn is essential to allow formation of T_{RM} cell precursors and mature T_{RM} cells.**
90. Borges da Silva, H. et al. The purinergic receptor P2RX7 directs metabolic fitness of long-lived memory CD8⁺ T cells. *Nature* **559**, 264–268 (2018).
91. Stark, R. et al. T_{RM} maintenance is regulated by tissue damage via P2RX7. *Sci. Immunol.* **3**, eaau1022 (2018).
92. Bromley, S. K. et al. CD49a regulates cutaneous resident memory CD8⁺ T cell persistence and response. *Cell Rep.* **32**, 108085 (2020).
93. Reilly, E. C. et al. T_{RM} integrins CD103 and CD49a differentially support adherence and motility after resolution of influenza virus infection. *Proc. Natl Acad. Sci. USA* **117**, 12306–12314 (2020).
94. Rao, R. R., Li, O., Odunsi, K. & Shrikant, P. A. The mTOR kinase determines effector versus memory CD8⁺ T cell fate by regulating the expression of transcription factors Tbet and eomesodermin. *Immunity* **32**, 67–78 (2010).
95. Sowell, R. T. et al. IL-15 complexes induce migration of resting memory CD8 T cells into mucosal tissues. *J. Immunol.* **199**, 2536–2546 (2017).
96. Sowell, R. T., Rogozinska, M., Nelson, C. E., Vezys, V. & Marzo, A. L. Cutting Edge: generation of effector cells that localize to mucosal tissues and form resident memory CD8 T cells is controlled by mTOR. *J. Immunol.* **193**, 2067–2071 (2014).
97. Zhou, A. C., Batista, N. V. & Watts, T. H. 4-1BB regulates effector CD8 T cell accumulation in the lung tissue through a TRAF1-, mTOR-, and antigen-dependent mechanism to enhance tissue-resident memory T cell formation during respiratory influenza infection. *J. Immunol.* **202**, 2482–2492 (2019).
98. Pollizzi, K. N. et al. Asymmetric inheritance of mTORC1 kinase activity during division dictates CD8⁺ T cell differentiation. *Nat. Immunol.* **17**, 704–711 (2016).
99. Joshi, N. S. et al. Inflammation directs memory precursor and short-lived effector CD8⁺ T cell fates via the graded expression of Tbet transcription factor. *Immunity* **27**, 281–295 (2007).
100. Laidlaw, B. J. et al. Production of IL-10 by CD4⁺ regulatory T cells during the resolution of infection promotes the maturation of memory CD8⁺ T cells. *Nat. Immunol.* **16**, 871–879 (2015).
101. Gebhardt, T. et al. Different patterns of peripheral migration by memory CD4⁺ and CD8⁺ T cells. *Nature* **477**, 216–219 (2011).
102. Mora, J. R. et al. Selective imprinting of gut-homing T cells by Peyer's patch dendritic cells. *Nature* **424**, 88–93 (2003).
103. Campbell, D. J. & Butcher, E. C. Rapid acquisition of tissue-specific homing phenotypes by CD4⁺ T cells activated in cutaneous or mucosal lymphoid tissues. *J. Exp. Med.* **195**, 135–141 (2002).
104. Sigmundsdottir, H. et al. DCs metabolize sunlight-induced vitamin D3 to 'program' T cell attraction to the epidermal chemokine CCL27. *Nat. Immunol.* **8**, 285–293 (2007).
105. Cassani, B. et al. Gut-tropic T cells that express integrin α 4 β 7 and CCR9 are required for induction of oral immune tolerance in mice. *Gastroenterology* **141**, 2109–2118 (2011).
106. Iwata, M. et al. Retinoic acid imprints gut-homing specificity on T cells. *Immunity* **21**, 527–538 (2004).
107. Wakim, L. M. et al. The molecular signature of tissue resident memory CD8 T cells isolated from the Brain. *J. Immunol.* **189**, 3462–3471 (2012).
108. Intlekofer, A. M. et al. Effector and memory CD8⁺ T cell fate coupled by Tbet and eomesodermin. *Nat. Immunol.* **6**, 1236–1244 (2005).
109. Laidlaw, B. J. et al. CD4⁺ T cell help guides formation of CD103⁺ lung-resident memory CD8⁺ T cells during influenza viral infection. *Immunity* **41**, 635–645 (2014).
110. Zens, K. D. et al. Reduced generation of lung tissue-resident memory T cells during infancy. *J. Exp. Med.* **214**, 2915–2932 (2017).

111. Banerjee, A. et al. Cutting Edge: the transcription factor eomesodermin enables CD8⁺ T cells to compete for the memory cell niche. *J. Immunol.* **185**, 4988–4992 (2010).
112. Lin, W.-H. W. et al. CD8⁺ T lymphocyte self-renewal during effector cell determination. *Cell Rep.* **17**, 1773–1782 (2016).
113. Utzschneider, D. T. et al. Early precursor T cells establish and propagate T cell exhaustion in chronic infection. *Nat. Immunol.* **21**, 1256–1266 (2020).
114. Yao, C. et al. Single-cell RNA-seq reveals TOX as a key regulator of CD8⁺ T cell persistence in chronic infection. *Nat. Immunol.* **20**, 890–901 (2019).
115. Wu, J. et al. T cell factor 1 suppresses CD103⁺ lung tissue-resident memory T cell development. *Cell Rep.* **31**, 107484 (2020).
116. Danilo, M., Chennupati, V., Silva, J. G., Siegert, S. & Held, W. Suppression of Tcf1 by inflammatory cytokines facilitates effector CD8 T cell differentiation. *Cell Rep.* **22**, 2107–2117 (2018).
117. Takemoto, N., Intlekofer, A. M., Northrup, J. T., Wherry, E. J. & Reiner, S. L. Cutting Edge: IL-12 inversely regulates Tbet and eomesodermin expression during pathogen-induced CD8⁺ T cell differentiation. *J. Immunol.* **177**, 7515–7519 (2006).
118. Ren, X. et al. COVID-19 immune features revealed by a large-scale single-cell transcriptome atlas. *Cell* **184**, 1895–1913.e19 (2021).
119. Mathew, D. et al. Deep immune profiling of COVID-19 patients reveals distinct immunotypes with therapeutic implications. *Science* **369**, eabc8511 (2020).
120. Szabo, P. A. et al. Longitudinal profiling of respiratory and systemic immune responses reveals myeloid cell-driven lung inflammation in severe COVID-19. *Immunity* **54**, 797–814.e6 (2021).
121. Wang, D. et al. The transcription factor Runx3 establishes chromatin accessibility of cis-regulatory landscapes that drive memory cytotoxic T lymphocyte formation. *Immunity* **48**, 659–674.e6 (2018).
122. Kragten, N. A. M. et al. Blimp-1 induces and Hobit maintains the cytotoxic mediator granzyme B in CD8 T cells. *Eur. J. Immunol.* **48**, 1644–1662 (2018).
123. Xin, A. et al. A molecular threshold for effector CD8⁺ T cell differentiation controlled by transcription factors Blimp-1 and Tbet. *Nat. Immunol.* **17**, 422–432 (2016).
124. Behr, F. M. et al. Tissue-resident memory CD8⁺ T cells shape local and systemic secondary T cell responses. *Nat. Immunol.* **21**, 1070–1081 (2020).
- This work, through the development and application of a genomic tool that allows the long-term tracking of cells that previously expressed the mouse T_{RM} cell-associated transcription factor HOBIT, finds that mouse T_{RM} cells can egress from tissues to join the circulation.**
125. Vieira Braga, F. A. et al. Blimp-1 homolog Hobit identifies effector-type lymphocytes in humans. *Eur. J. Immunol.* **45**, 2945–2958 (2015).
126. Oja, A. E. et al. The transcription factor hobit identifies human cytotoxic CD4⁺ T cells. *Front. Immunol.* **8**, 325 (2017).
127. Nicolet, B. P. et al. CD29 identifies IFN- γ -producing human CD8⁺ T cells with an increased cytotoxic potential. *Proc. Natl Acad. Sci. USA* **117**, 6686–6696 (2020).
128. Kumar, B. V. et al. Human tissue-resident memory T cells are defined by core transcriptional and functional signatures in lymphoid and mucosal sites. *Cell Rep.* **20**, 2921–2934 (2017).
129. Li, C. et al. The transcription factor Bhlhe40 programs mitochondrial regulation of resident CD8⁺ T cell fitness and functionality. *Immunity* **51**, 491–507.e7 (2019).
130. Boddupalli, C. S. et al. ABC transporters and NR4A1 identify a quiescent subset of tissue-resident memory T cells. *J. Clin. Invest.* **126**, 3905–3916 (2016).
131. Nowyhed, H. N., Huynh, T. R., Thomas, G. D., Blatchley, A. & Hedrick, C. C. Cutting edge: the orphan nuclear receptor Nr4a1 regulates CD8⁺ T cell expansion and effector function through direct repression of Irf4. *J. Immunol.* **195**, 3515–3519 (2015).
132. Liebmann, M. et al. Nur77 serves as a molecular brake of the metabolic switch during T cell activation to restrict autoimmunity. *Proc. Natl Acad. Sci. USA* **115**, E8017–E8026 (2018).
133. Liu, X. et al. Genome-wide analysis identifies NR4A1 as a key mediator of T cell dysfunction. *Nature* **567**, 525–529 (2019).
134. Lin, C.-C. et al. Bhlhe40 controls cytokine production by T cells and is essential for pathogenicity in autoimmune neuroinflammation. *Nat. Commun.* **5**, 3551 (2014).
135. Yu, F. et al. The transcription factor Bhlhe40 is a switch of inflammatory versus antiinflammatory T_H1 cell fate determination. *J. Exp. Med.* **215**, 1813–1821 (2018).
136. Beura, L. K. et al. Intravital mucosal imaging of CD8⁺ resident memory T cells shows tissue-autonomous recall responses that amplify secondary memory. *Nat. Immunol.* **19**, 173–182 (2018).
137. Park, S. L. et al. Local proliferation maintains a stable pool of tissue-resident memory T cells after antiviral recall responses. *Nat. Immunol.* **19**, 183–191 (2018).
138. Stolley, J. M. et al. Retrograde migration supplies resident memory T cells to lung-draining LN after influenza infection. *J. Exp. Med.* **217**, e20192197 (2020).
139. Klicznik, M. M. et al. Human CD4⁺CD103⁺ cutaneous resident memory T cells are found in the circulation of healthy individuals. *Sci. Immunol.* **4**, eaav8995 (2019).
- This work describes the existence of CD4⁺ T cells in the blood of human subjects that transcriptionally resemble T_{RM} cells, and through the use of xenograft models this study furthermore shows that human CD4⁺ T_{RM} cells can re-enter the circulation and, subsequently, reseed distant skin sites as T_{RM} cells.**
140. Low, J. S. et al. Tissue-resident memory T cell reactivation by diverse antigen-presenting cells imparts distinct functional responses. *J. Exp. Med.* **217**, e20192291 (2020).
141. Li, C. et al. TCR transgenic mice reveal stepwise, multi-site acquisition of the distinctive Fat-T_{REG} phenotype. *Cell* **174**, 285–299.e12 (2018).
142. Miragaia, R. J. et al. Single-cell transcriptomics of regulatory T cells reveals trajectories of tissue adaptation. *Immunity* **50**, 493–504.e7 (2019).
143. Delacher, M. et al. Precursors for nonlymphoid-tissue treg cells reside in secondary lymphoid organs and are programmed by the transcription factor BATF. *Immunity* **52**, 295–312.e11 (2020).
144. Masopust, D. & Schenkel, J. M. The integration of T cell migration, differentiation and function. *Nat. Rev. Immunol.* **13**, 309–320 (2013).
145. Sheth, R. U. & Wang, H. H. DNA-based memory devices for recording cellular events. *Nat. Rev. Genet.* **19**, 718–732 (2018).

Author contributions

L.K. researched data for the article. L.K. and T.N.M. discussed content and wrote the initial concept. L.K., D.M. and T.N.M. reviewed and edited the manuscript.

Competing interests

The authors declare no competing interests.

Peer review information

Nature Reviews Immunology thanks Benjamin A. Youngblood and the other, anonymous, reviewers for their contribution to the peer review of this work.

Publisher's note

Springer Nature remains neutral with regard to jurisdictional claims in published maps and institutional affiliations.

© Springer Nature Limited 2021