

Author Correction: Functional diversity and community assembly of river invertebrates show globally consistent responses to decreasing glacier cover

Correction to: *Nature Ecology & Evolution*
<https://doi.org/10.1038/s41559-017-0426-x>
Published online 18 December 2017.

<https://doi.org/10.1038/s41559-023-01989-y>

Published online: 30 January 2023



Lee E. Brown , Kieran Khamis , Martin Wilkes , Phillip Blaen, John E. Brittain, Jonathan L. Carrivick, Sarah Fell, Nikolai Friberg, Leopold Füreder, Gisli M. Gislason , Sarah Hainie, David M. Hannah , William H. M. James, Valeria Lencioni , Jon S. Olafsson, Christopher T. Robinson, Svein J. Saltveit, Craig Thompson & Alexander M. Milner 

In the published version of this article, the deposited data files included incorrect glacier cover values for the Greenland sampling sites. These values were linked with only 8 of the total 364 samples in our database but they were used subsequently in the analyses and plots, leading to minor errors in Figures 1, 2, 4 and 5 of the main article; Supplementary Tables 2 and 4; Supplementary Figure 4; and some statistical values reported in the main text. The amended figures (see Figs. 1–4 below) are presented for the main article, and both the online data files (<https://doi.org/10.5518/267>) and Supplementary information (see below) have been updated.

The changes can be summarised as follows:

Figure 1: Panel **h** updated to include the correct glacier cover values for each data point, and panels **a–i** have updated grey background values.

Figure 2: Columns FG1 and FG3 (Greenland row) updated to include the correct glacier cover values for each data point, and other panels have updated grey background values.

Figure 4: Greenland row updated to include the correct glacier cover values for each data point, and other panels have updated grey background values.

Figure 5: Greenland row updated to include the correct glacier cover values for each data point, and other panels have updated grey background values.

Supplementary Table 2: Updated regression co-efficient and fit values.

Supplementary Table 4: Updated regression co-efficient and fit values.

Supplementary Figure 4: Greenland row updated to include the correct glacier cover values for each data point, and other panels have updated grey background values.

Results reported directly in the main article text are updated as follows:

Original text: FRic increased significantly with less glacier cover ($P < 0.001$; $R^2 = 0.17$); *updated text:* FRic increased significantly with less glacier cover ($P < 0.001$; $R^2 = 0.18$)

Original text: FEve showed more regular distributions of organisms in trait space with decreasing glacier cover ($P < 0.001$; $R^2 = 0.28$); *updated text:* FEve showed more regular distributions of organisms in trait space with decreasing glacier cover ($P < 0.001$; $R^2 = 0.29$);

Original text: FDis ($P < 0.001$; $R^2 = 0.47$) and FEnt ($P < 0.001$; $R^2 = 0.44$) also increased significantly with declining glacier cover; *updated text:* FDis ($P < 0.001$; $R^2 = 0.46$) and FEnt ($P < 0.001$; $R^2 = 0.44$) also increased significantly with declining glacier cover.

None of these changes alter the conclusions of the study.

Additional information

Supplementary information The online version contains supplementary material available at <https://doi.org/10.1038/s41559-023-01989-y>.

© The Author(s), under exclusive licence to Springer Nature Limited 2023

Corrections & amendments

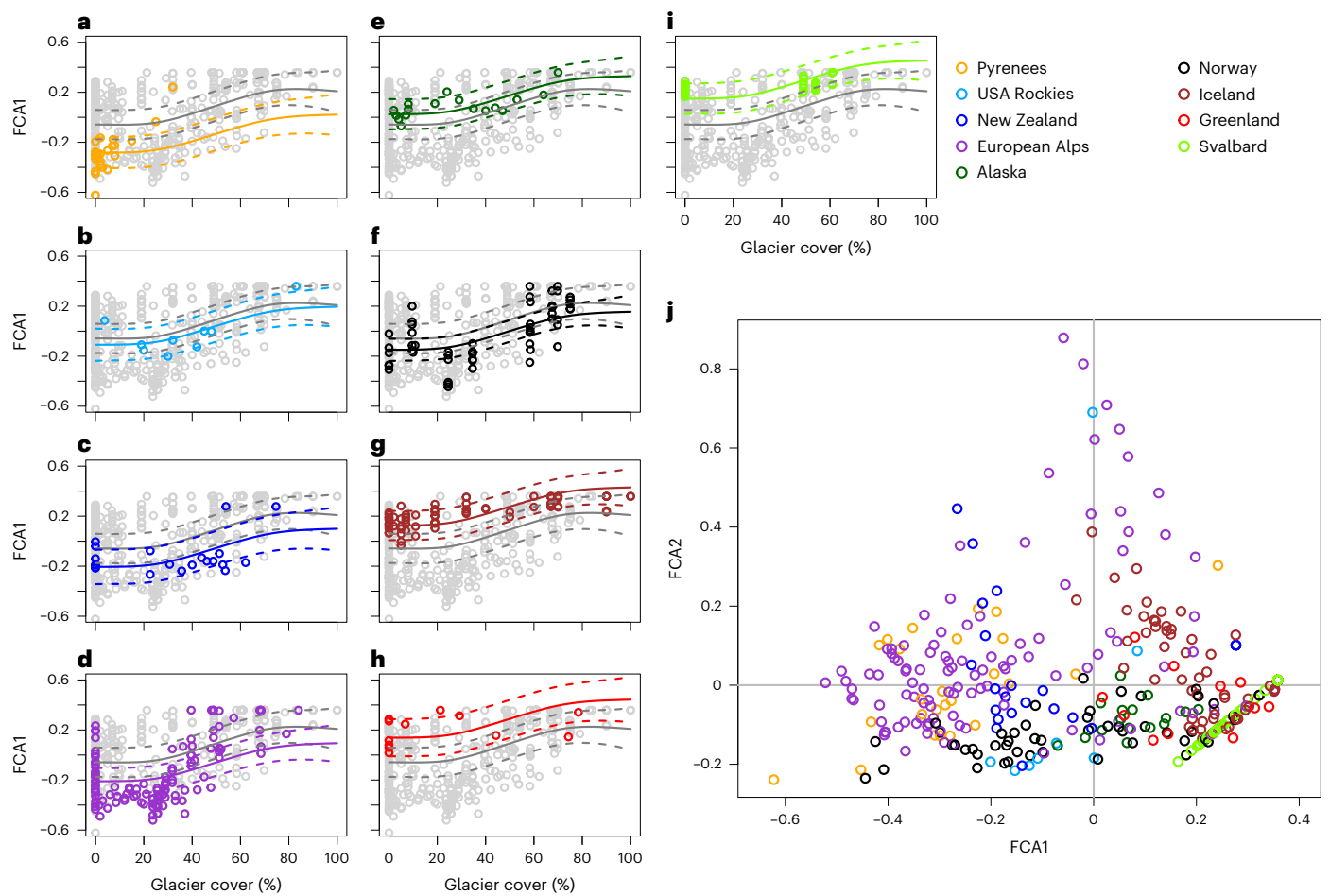


Fig. 1 | Revised Figure 1.

Corrections & amendments

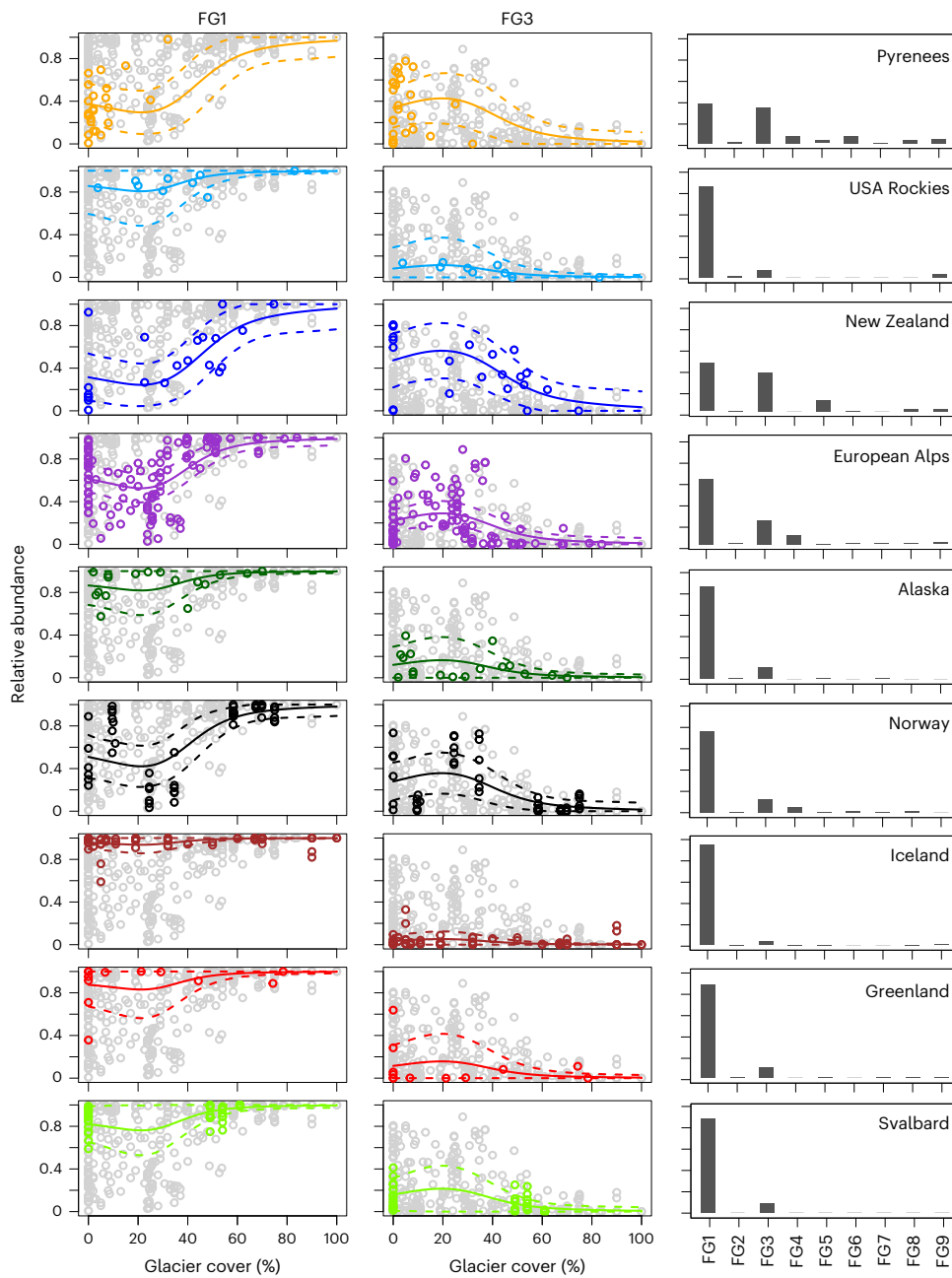


Fig. 2 | Revised Figure 2.

Corrections & amendments

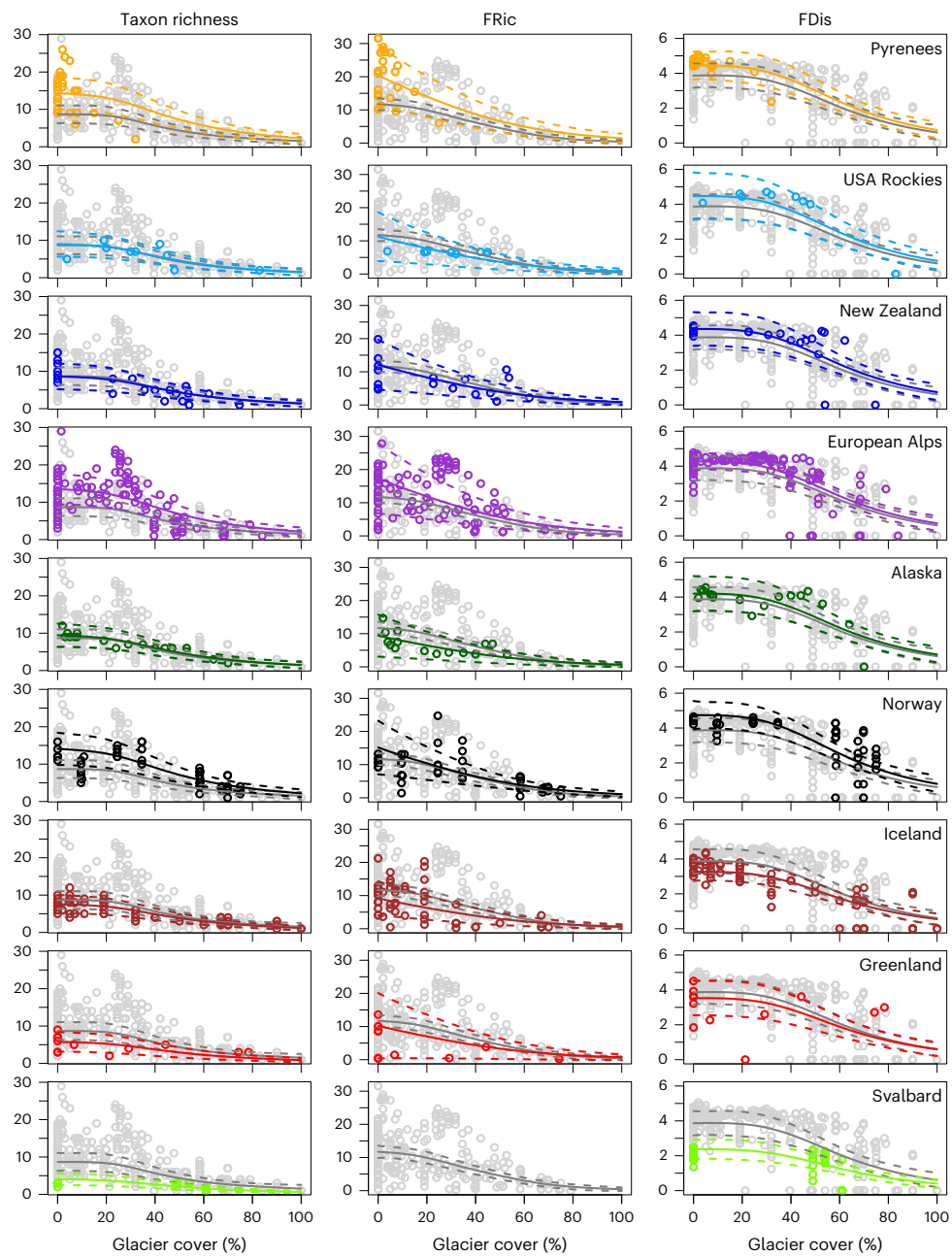


Fig. 3 | Revised Figure 4.

Corrections & amendments

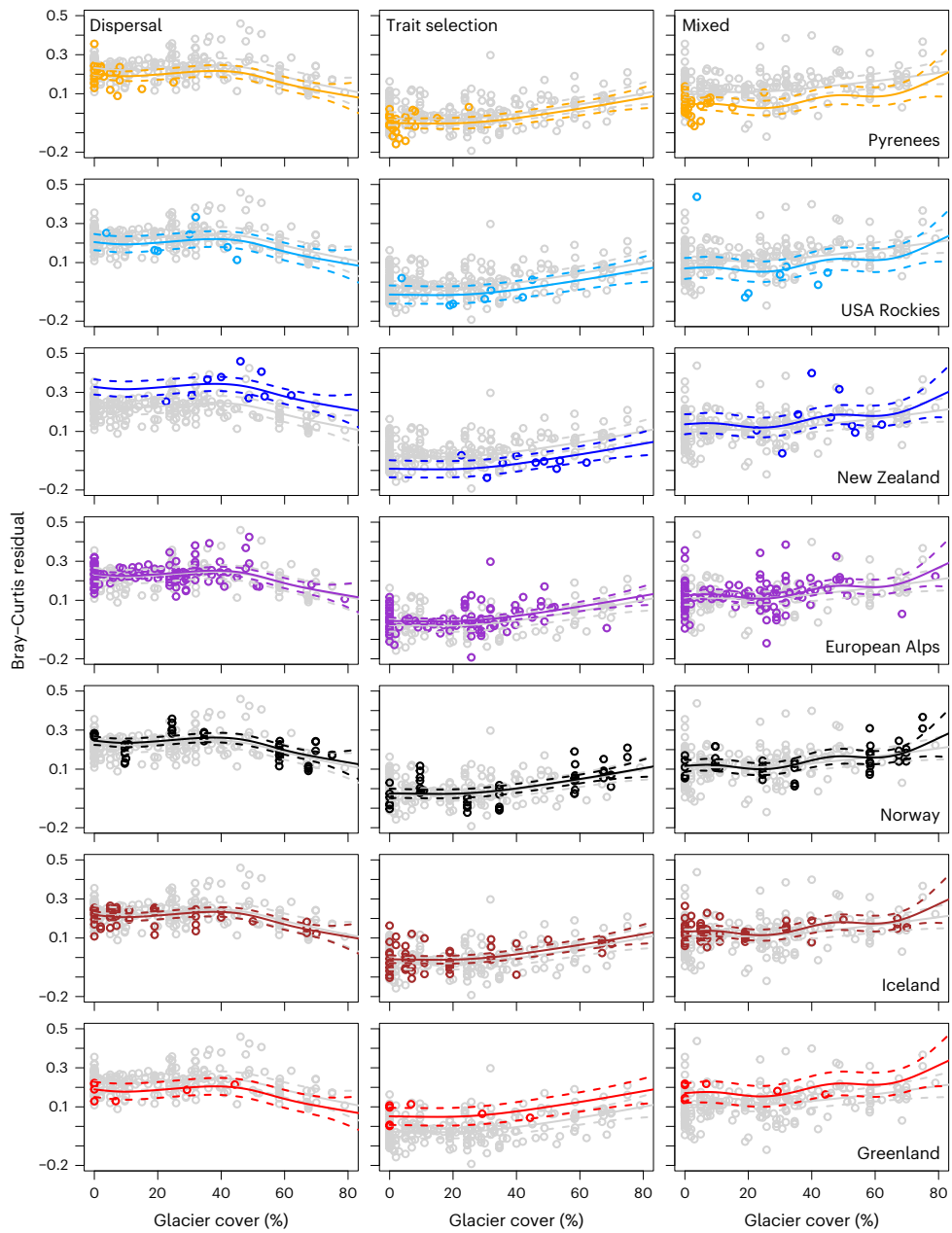


Fig. 4 | Revised Figure 5.