

<https://doi.org/10.1038/s41467-020-17413-z>

OPEN

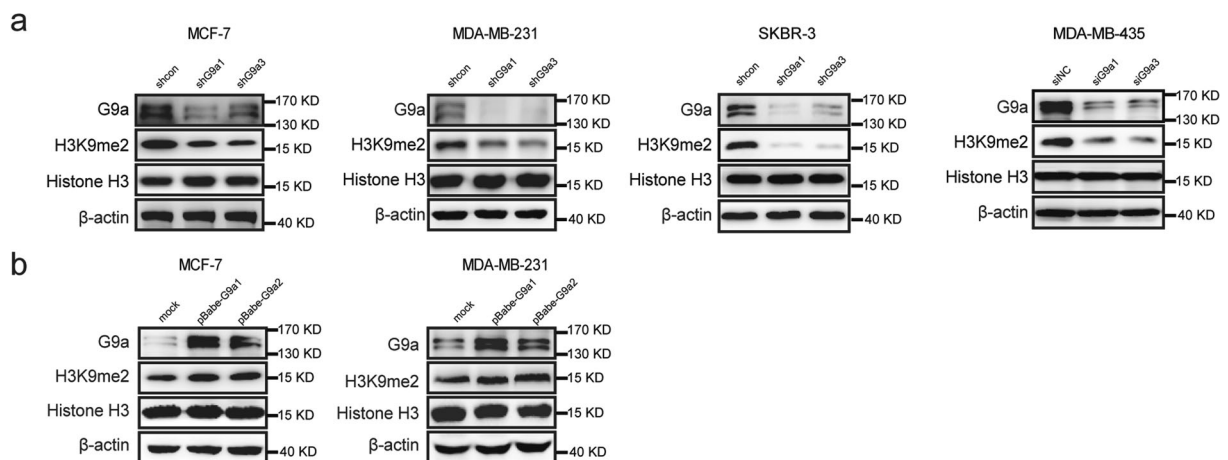
# Author Correction: G9a regulates breast cancer growth by modulating iron homeostasis through the repression of ferroxidase hephaestin

Ya-fang Wang, Jie Zhang, Yi Su, Yan-yan Shen, Dong-xian Jiang, Ying-yong Hou, Mei-yu Geng, Jian Ding & Yi Chen

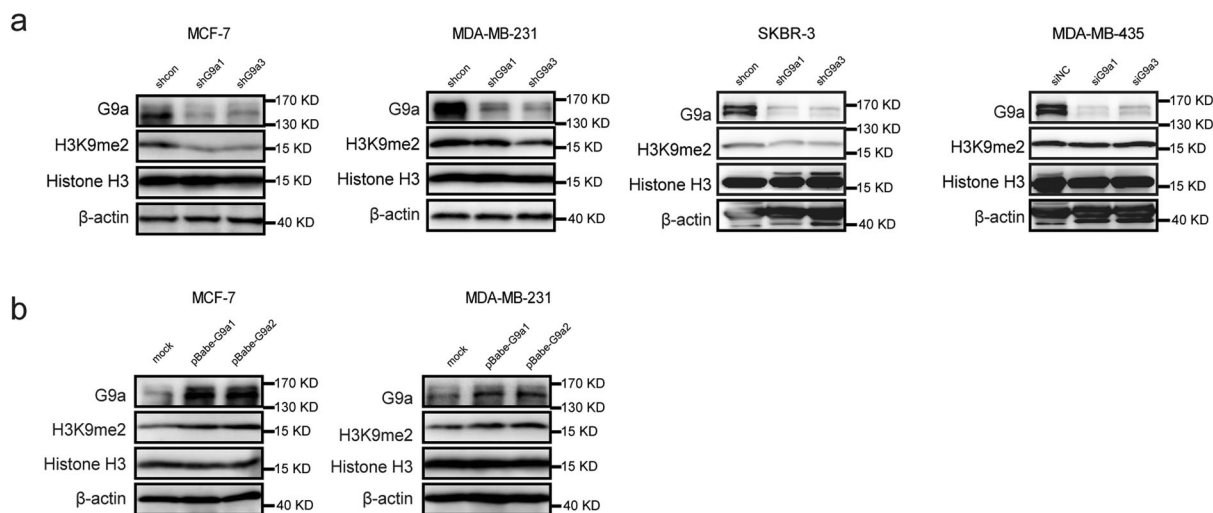
Correction to: *Nature Communications* <https://doi.org/10.1038/s41467-017-00350-9>, published online 17 August 2017.

This article contained errors in Figs. 1, 4, Supplementary Fig. 3 and Supplementary Fig. 5. The correct data for Figs. 1 and 4 were included in the original full scan blots provided as Supplementary Information in the published article.

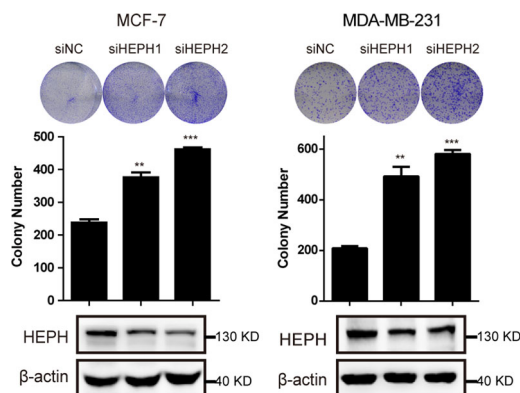
All western blot data from the Fig. 1a, 1b (shown below) were duplicated from Fig. 2b and Supplementary Fig. 1c, respectively.



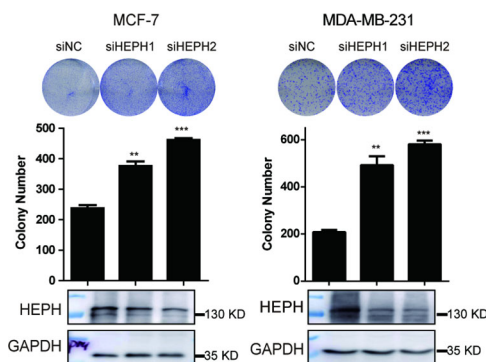
The correct versions of Fig. 1a and 1b were shown in the original full scan blots in Supplementary Fig. 6. The correct version of Fig. 1 is shown below.



In the original Fig. 4d (shown below), the band showing  $\beta$ -actin expression in MDA-MB-231 cells was duplicated from Fig. 2b  $\beta$ -actin expression in MDA-MB-231 cells.

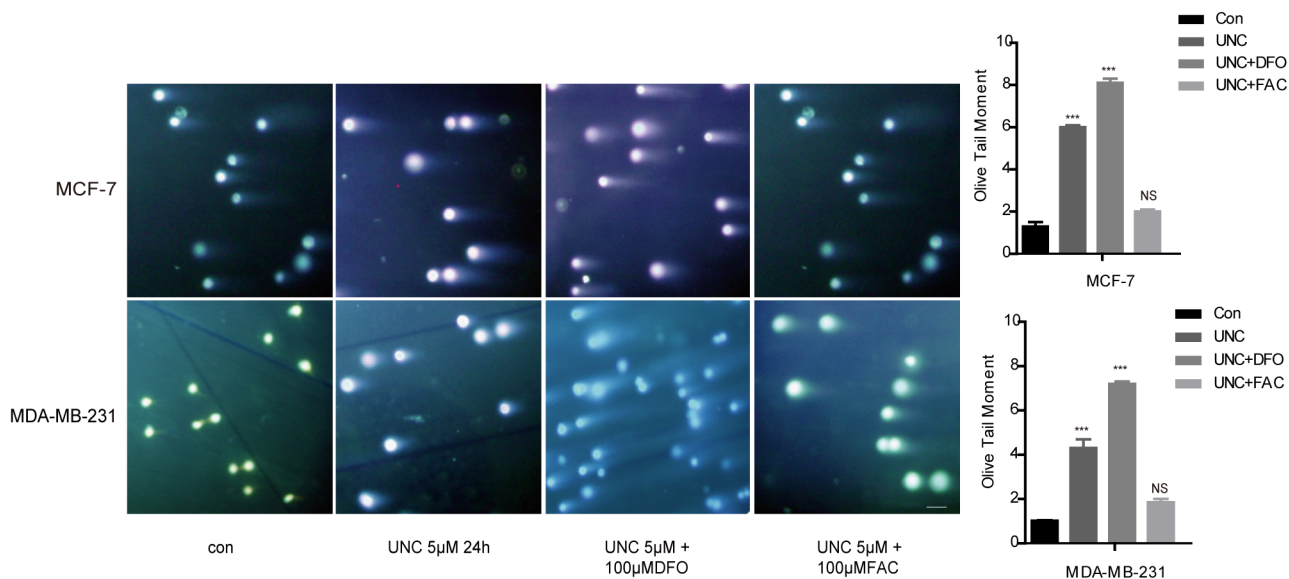


The correct data for this figure was included in the full scan of Supplementary Fig. 7a, which was probed for HEPH and GAPDH as a control and is shown below.

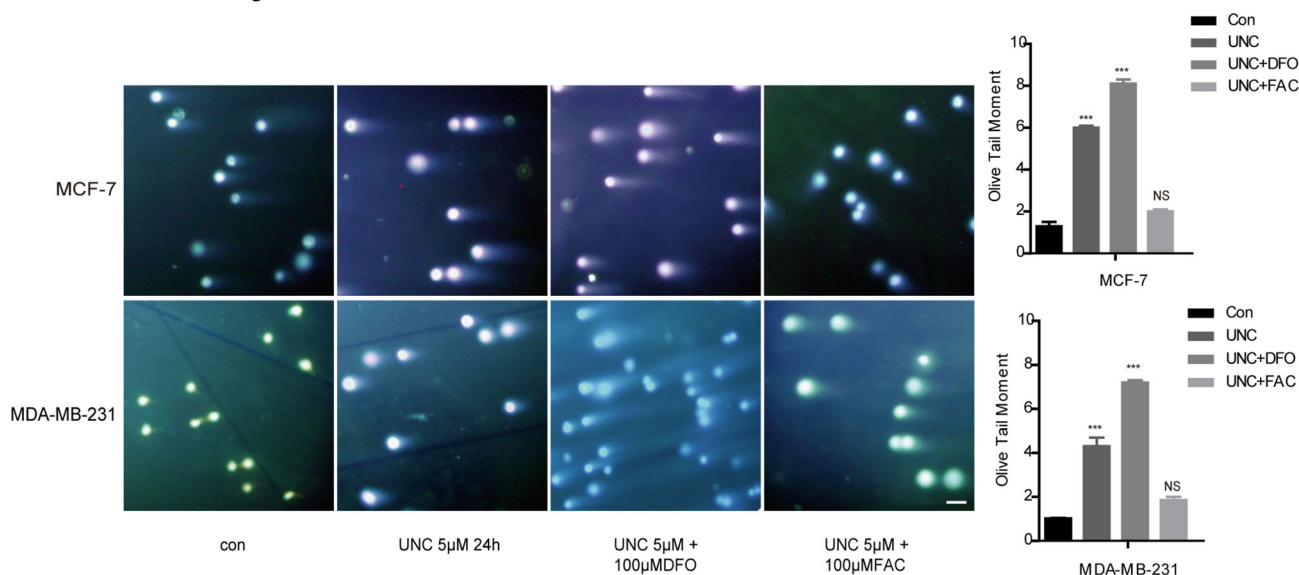


All mentioned changes to the original version were corrected in the pdf and html versions of the Article

In the original version of Supplementary Fig. 3b (shown below), the representative image of comet assay in group MCF-7 UNC 5  $\mu\text{m}$  +FAC 100  $\mu\text{m}$  was duplicated from the image of MCF-7 Con.



The correct data for this figure is now shown below.



In the original version of Supplementary Fig. 5, the G9a band in MDA-MB-231 cells was duplicated from the G9a band in MDA-MB-231 cells in Fig. 1a. Due to damage to the hard drive storing the original data, we are unable to provide the source data. We repeated the experiments and the data for Supplementary Fig. 5e is shown in the Supplementary Information file with this correction. In this experiment  $\beta$ -actin is provided as the loading control instead of GAPDH.

In addition, we also provide contemporaneous independent repeats of the experiments shown in Fig. 2b in the Supplementary Information file with this correction. The original Supplementary Information file has been corrected.

**Open Access** This article is licensed under a Creative Commons Attribution 4.0 International License, which permits use, sharing, adaptation, distribution and reproduction in any medium or format, as long as you give appropriate credit to the original author(s) and the source, provide a link to the Creative Commons license, and indicate if changes were made. The images or other third party material in this article are included in the article's Creative Commons license, unless indicated otherwise in a credit line to the material. If material is not included in the article's Creative Commons license and your intended use is not permitted by statutory regulation or exceeds the permitted use, you will need to obtain permission directly from the copyright holder. To view a copy of this license, visit <http://creativecommons.org/licenses/by/4.0/>.