





<https://doi.org/10.1038/s41467-020-15365-y>

OPEN

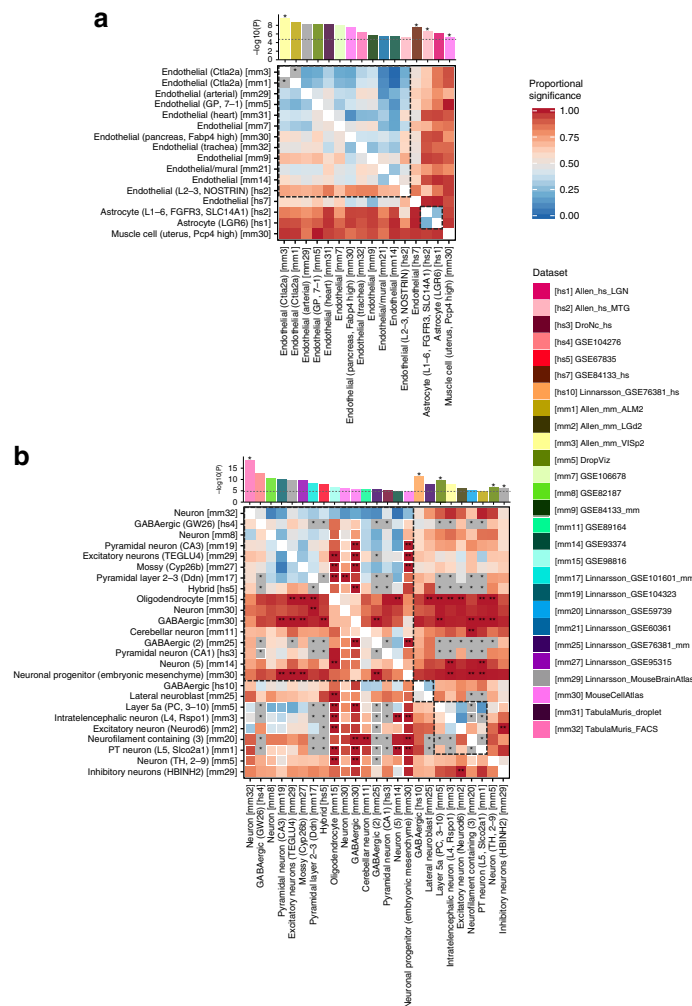
# Author Correction: Genetic mapping of cell type specificity for complex traits

Kyoko Watanabe , Maša Umičević Mirkov, Christiaan A. de Leeuw , Martijn P. van den Heuvel  & Danielle Posthuma 

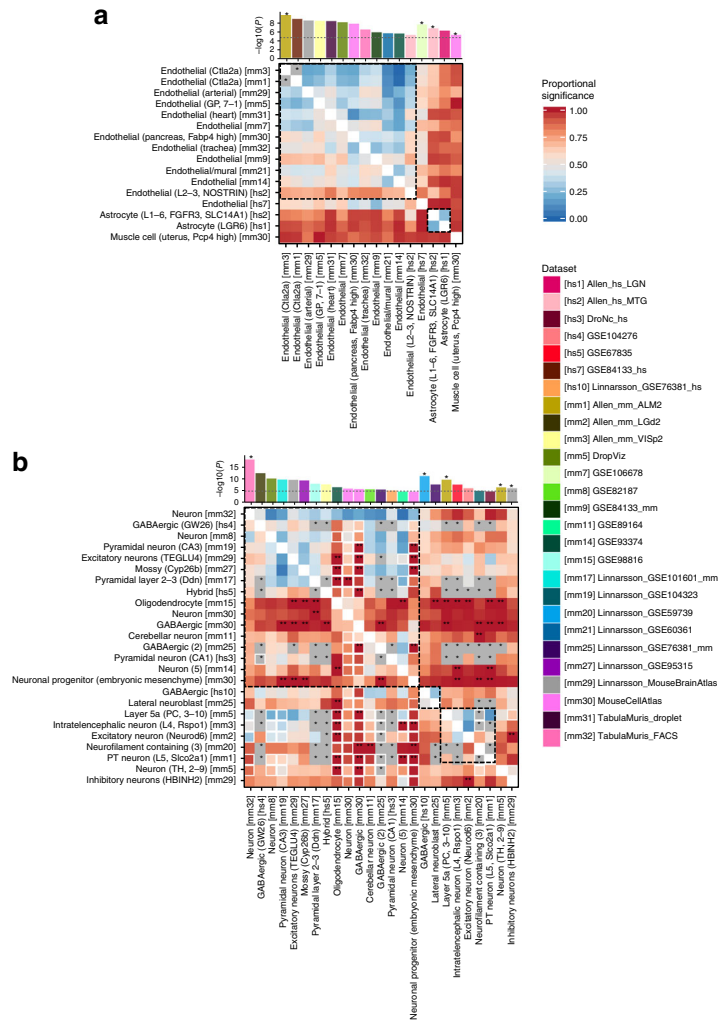
Correction to: *Nature Communications* <https://doi.org/10.1038/s41467-019-11181-1>, published online 19 July 2019.

The original version of this Article contained an error in Fig. 5 and Supplementary Fig. 12, in which the colours of the bar plots at the top of the heatmaps were incorrectly given, leading to incorrect mapping of the plots to the corresponding dataset based on the dataset legend.

The correct version of Fig. 5 is:

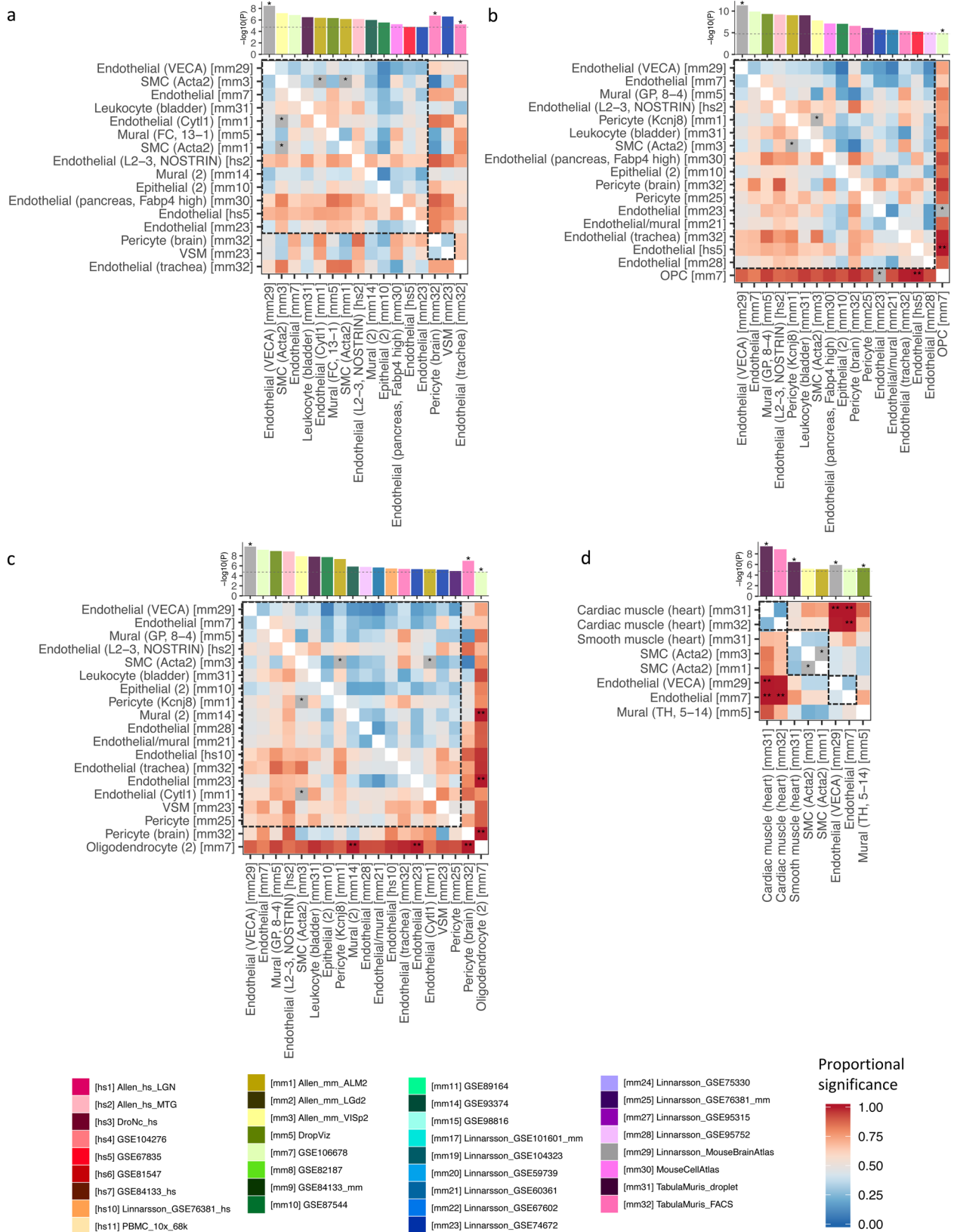


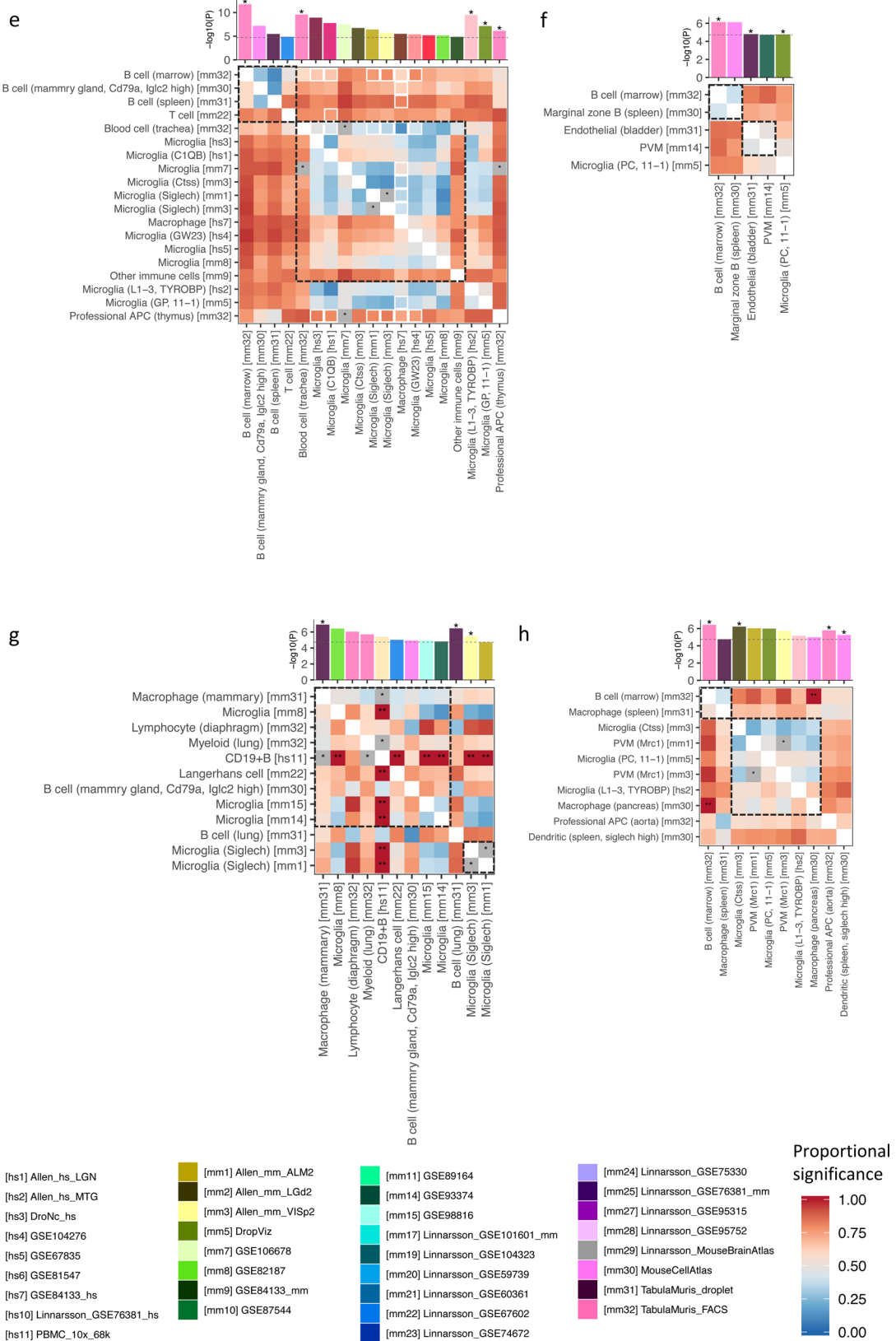
which replaces the previous incorrect version:

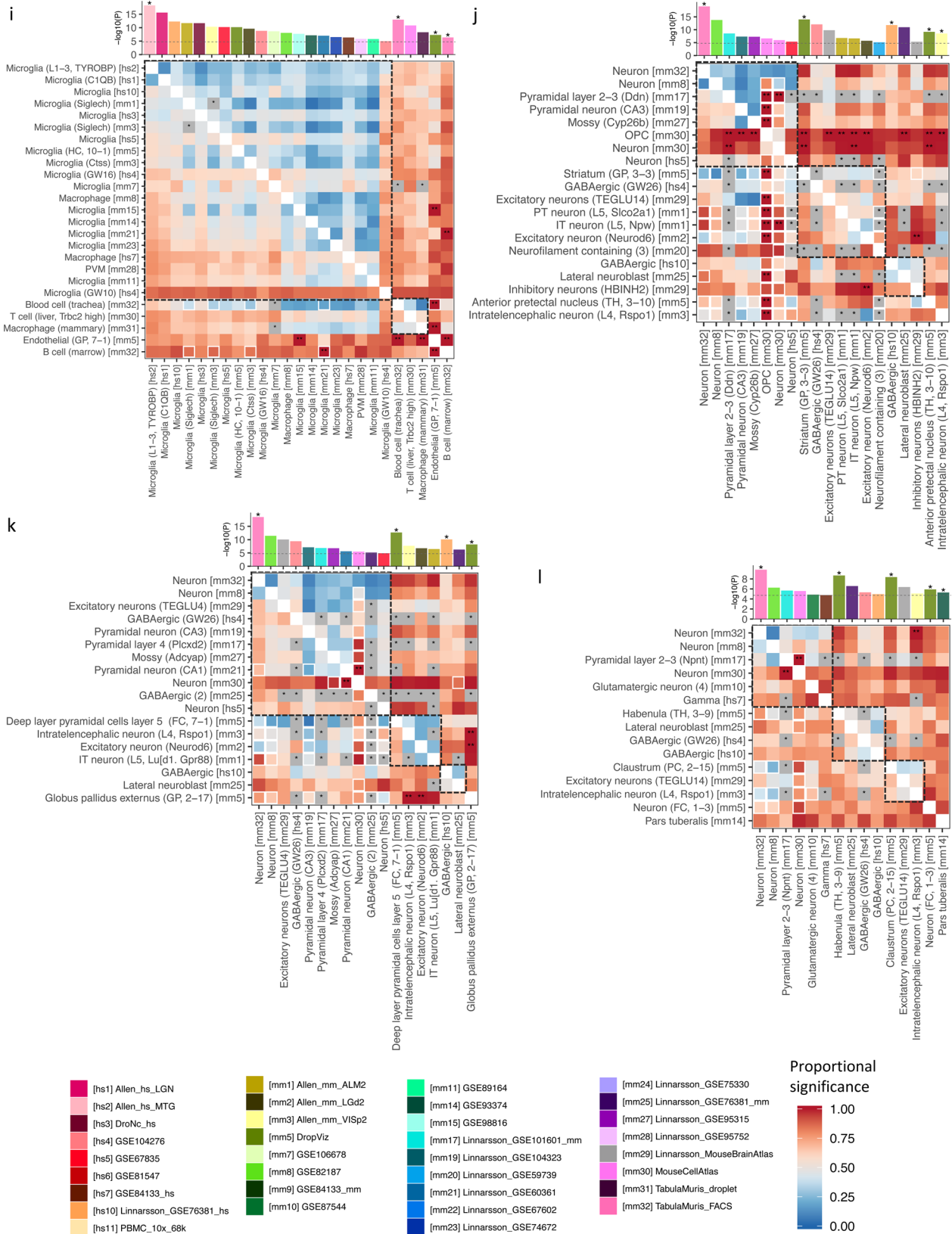


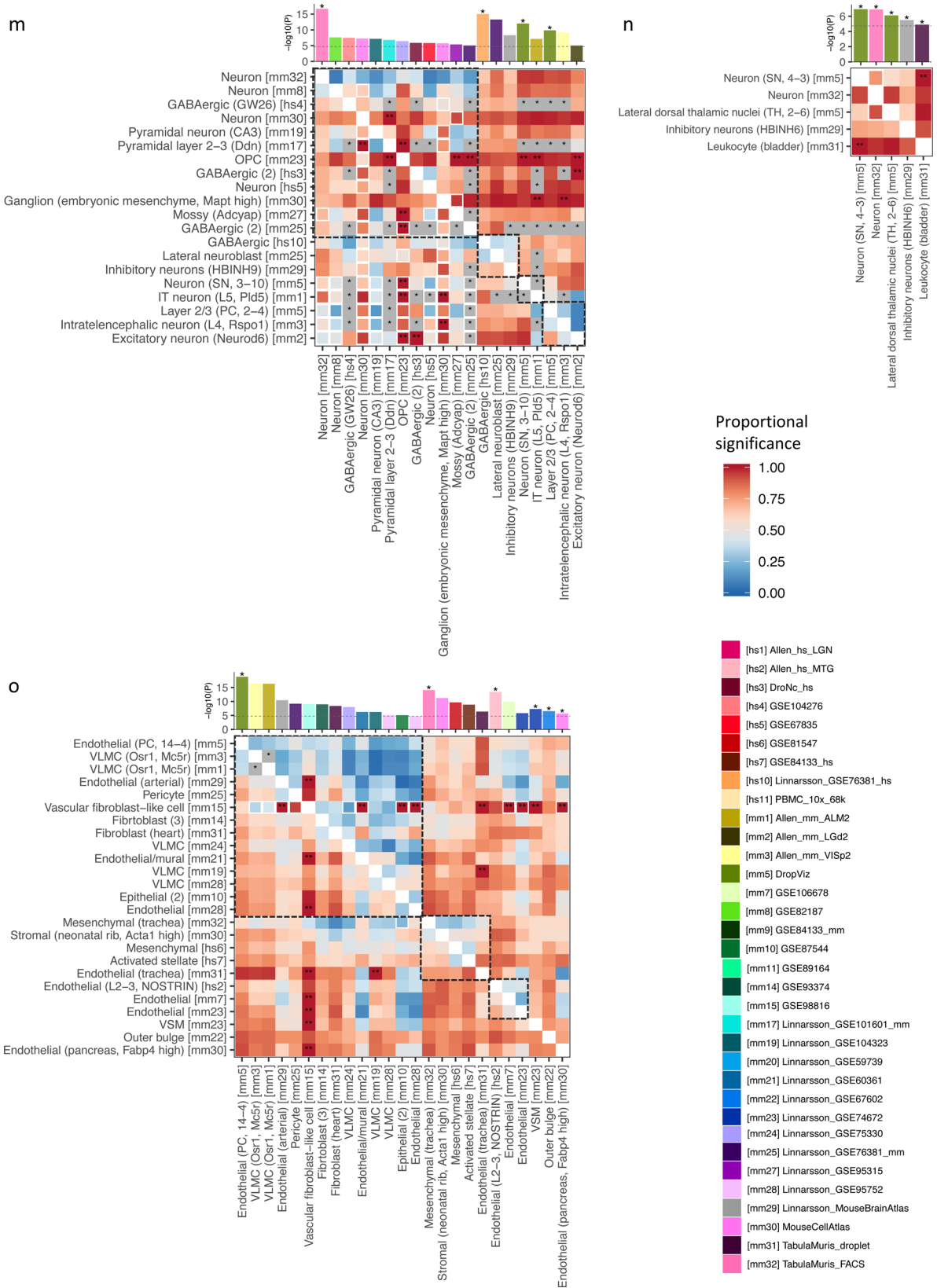
This has been corrected in both the PDF and HTML versions of the Article.

The correct version of Supplementary Fig. 12 is:



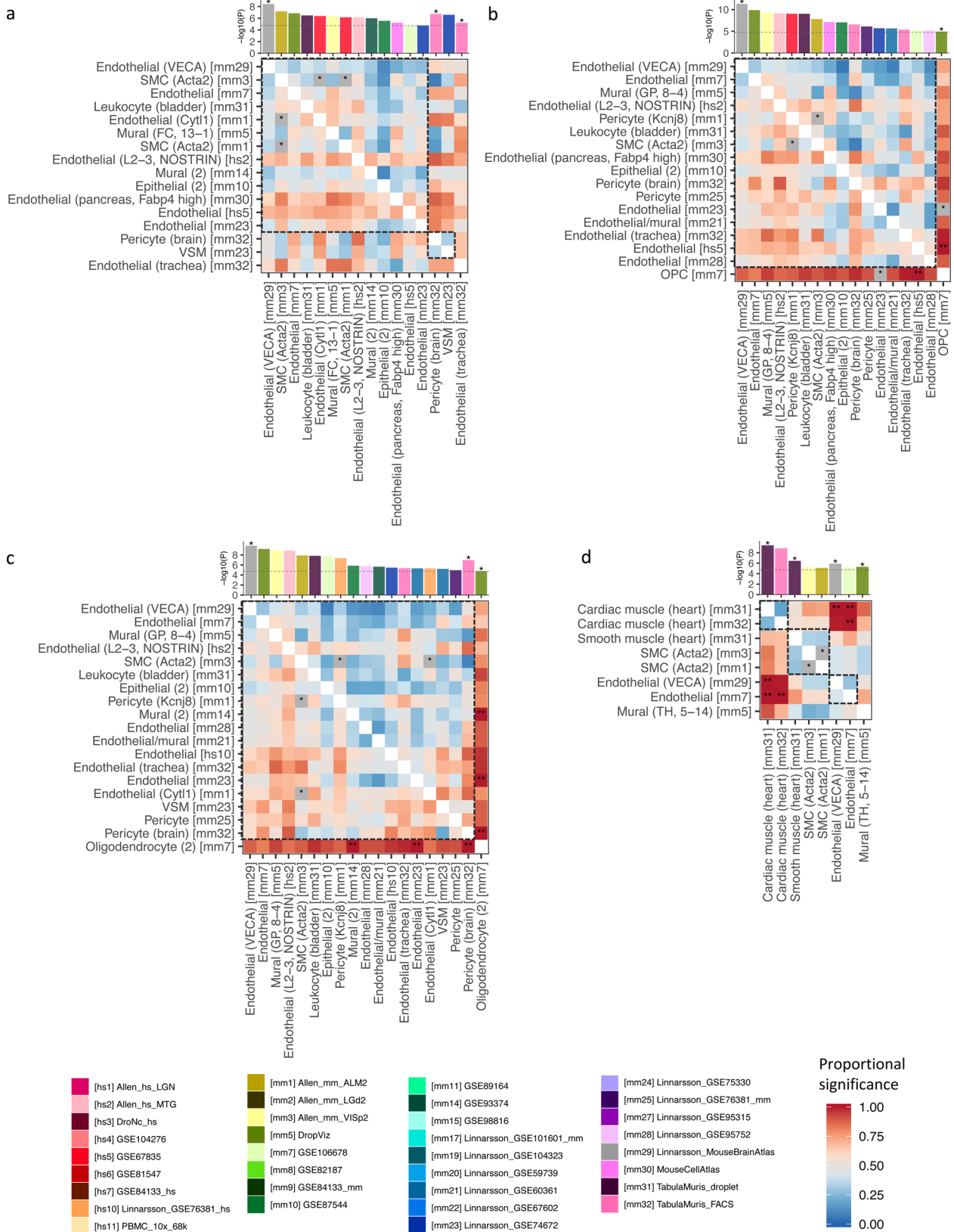


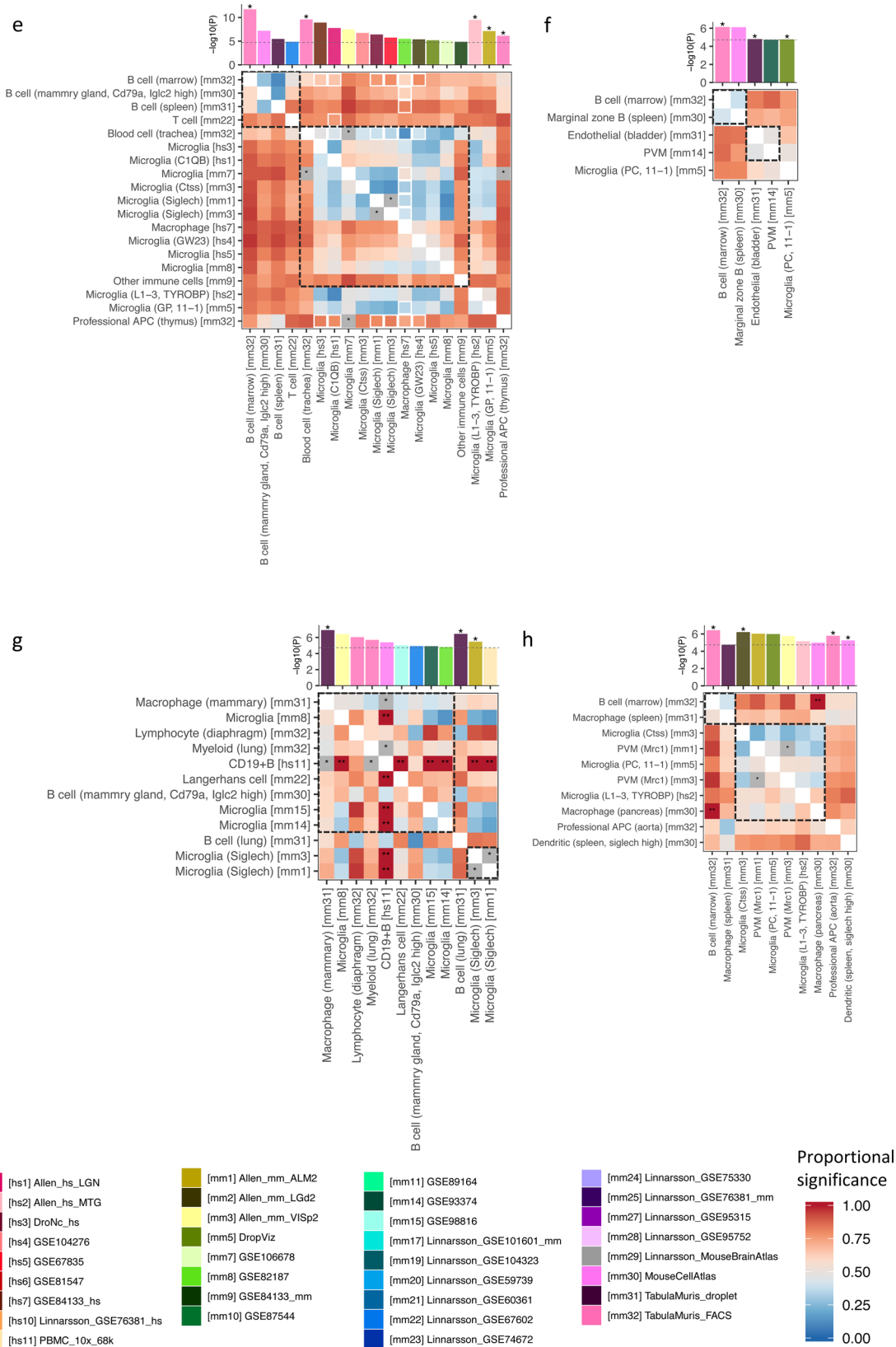




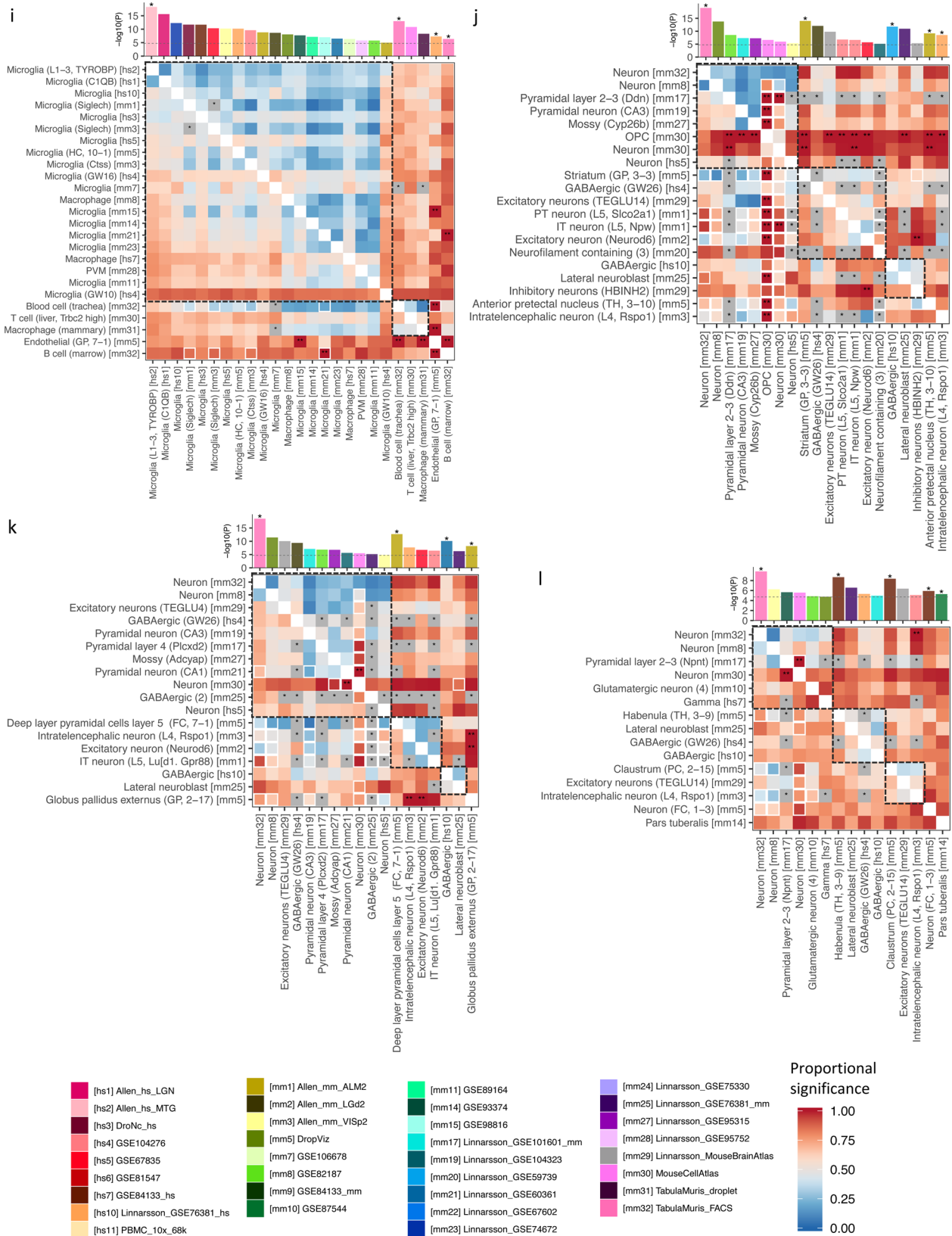


which replaces the previous incorrect version.

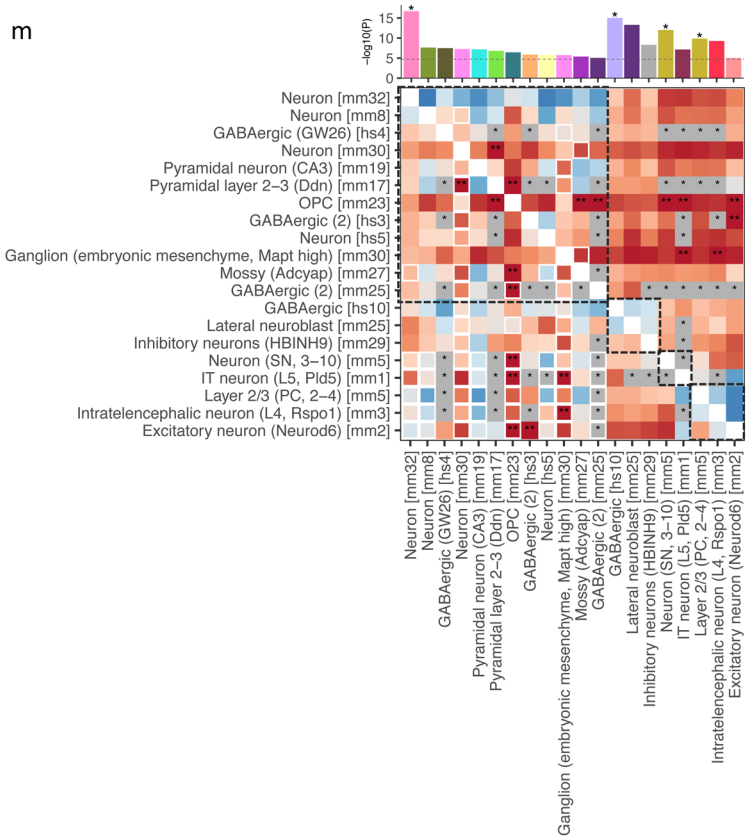




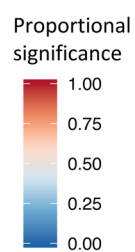
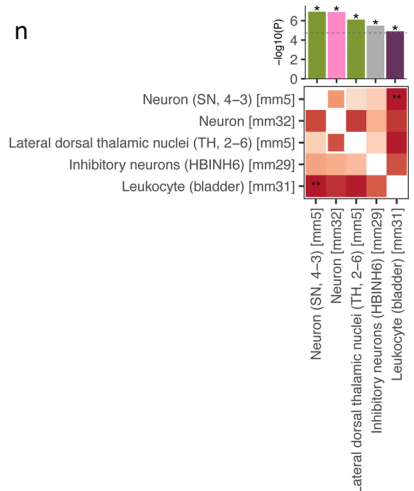




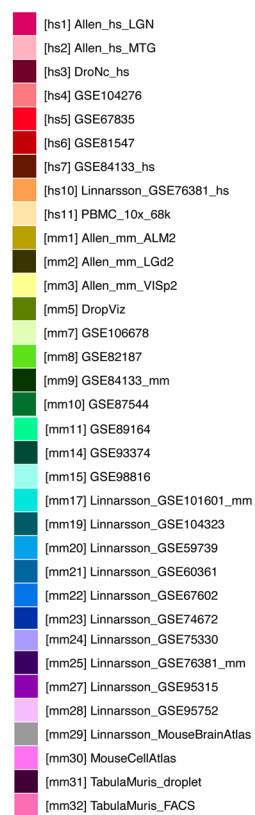
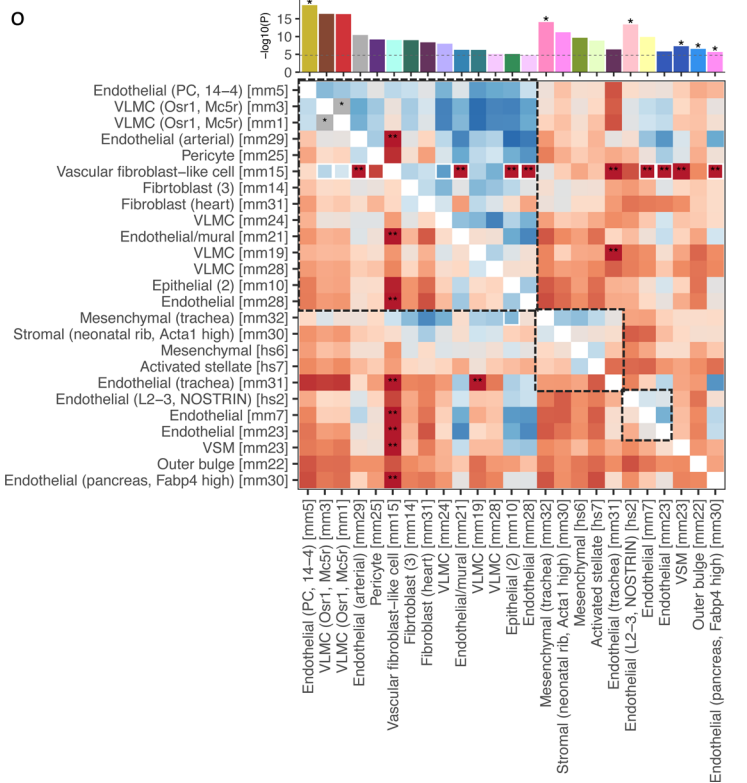
m



n



o



The HTML has been updated to include a corrected version of the Supplementary Information.

Published online: 01 April 2020



**Open Access** This article is licensed under a Creative Commons Attribution 4.0 International License, which permits use, sharing, adaptation, distribution and reproduction in any medium or format, as long as you give appropriate credit to the original author(s) and the source, provide a link to the Creative Commons license, and indicate if changes were made. The images or other third party material in this article are included in the article's Creative Commons license, unless indicated otherwise in a credit line to the material. If material is not included in the article's Creative Commons license and your intended use is not permitted by statutory regulation or exceeds the permitted use, you will need to obtain permission directly from the copyright holder. To view a copy of this license, visit <http://creativecommons.org/licenses/by/4.0/>.

© The Author(s) 2020